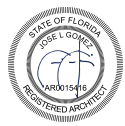


NOLI DISTRICT



Digitally signed
by Jose L. Gomez
Date: 2026.04.04
10:46:09 -04'00'

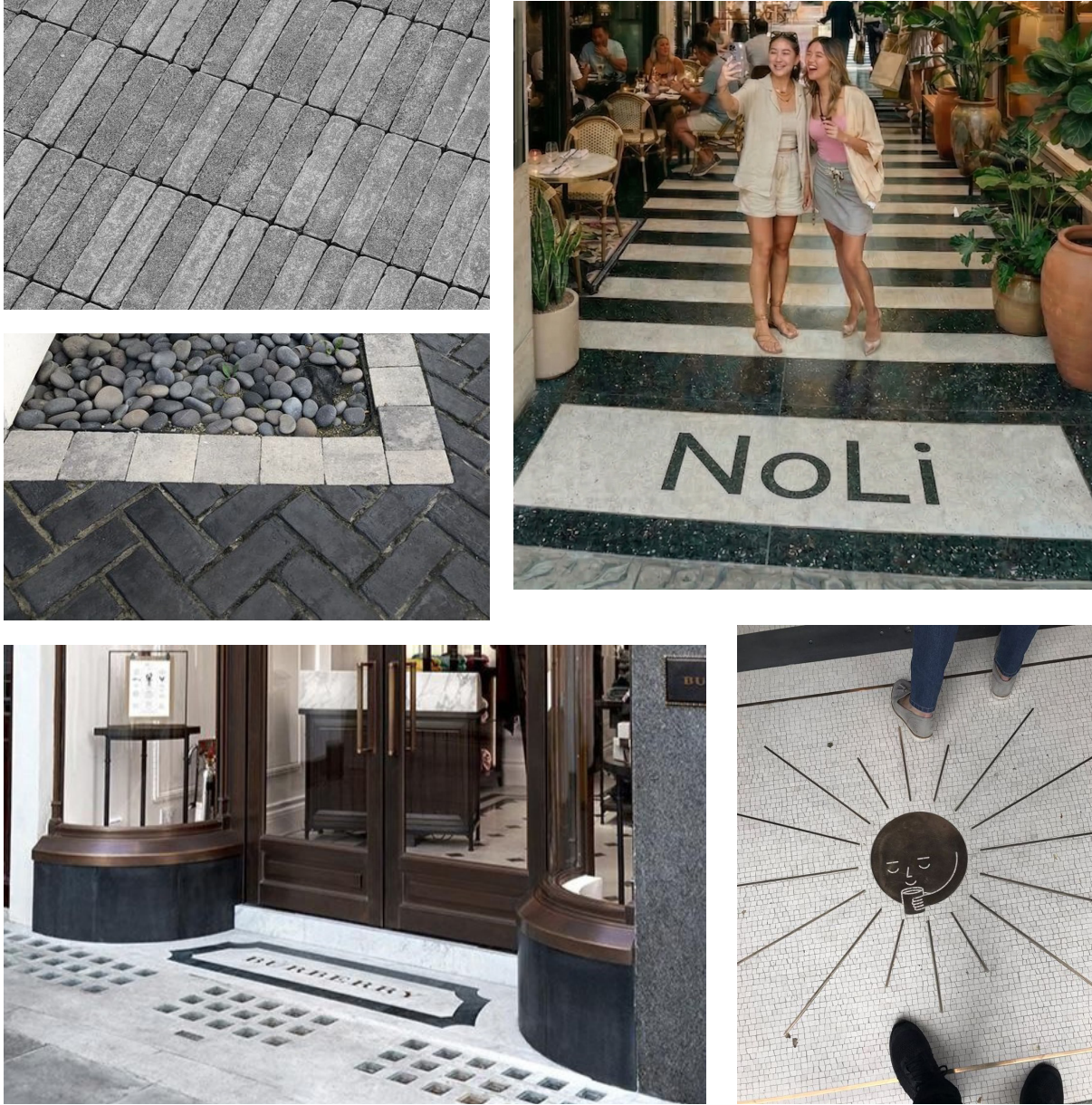


HISTORIC PRESERVATION BOARD | APRIL 5, 2026

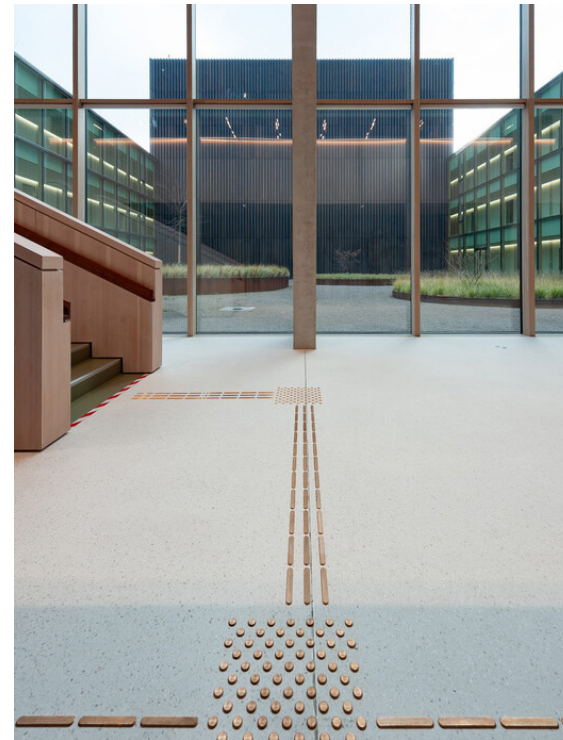
Landscape: Shade and Water



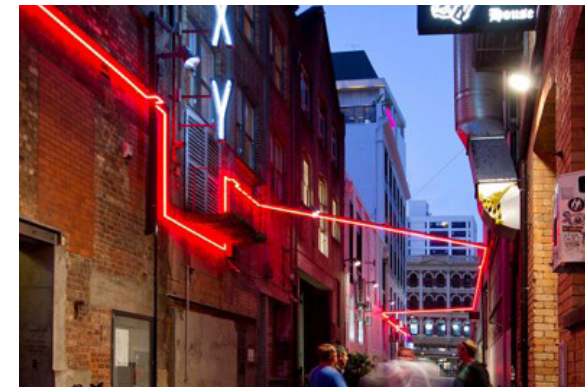
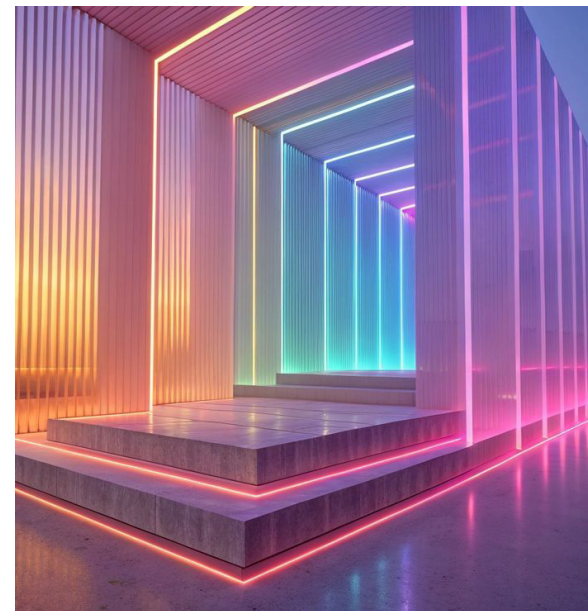
Hardscape & Street Furniture

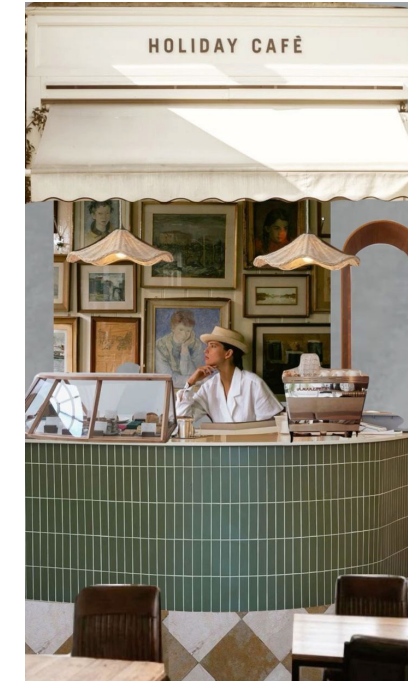


Wayfinding



Activations





Noli Plaza



SHOWN FOR REFERENCE
NOT IN SCOPE



1



2



3



5

SHOWN FOR REFERENCE
NOT IN SCOPE

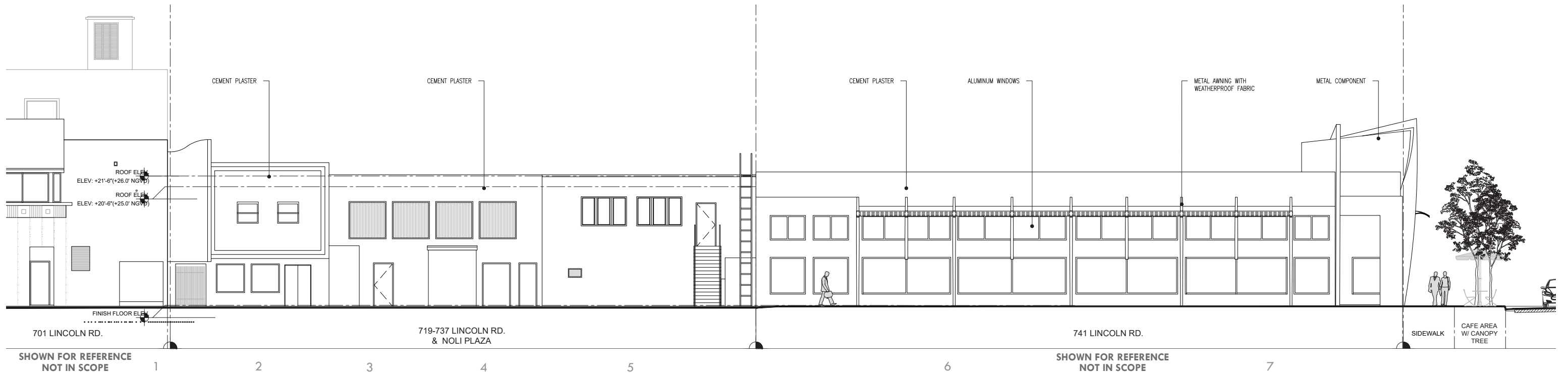
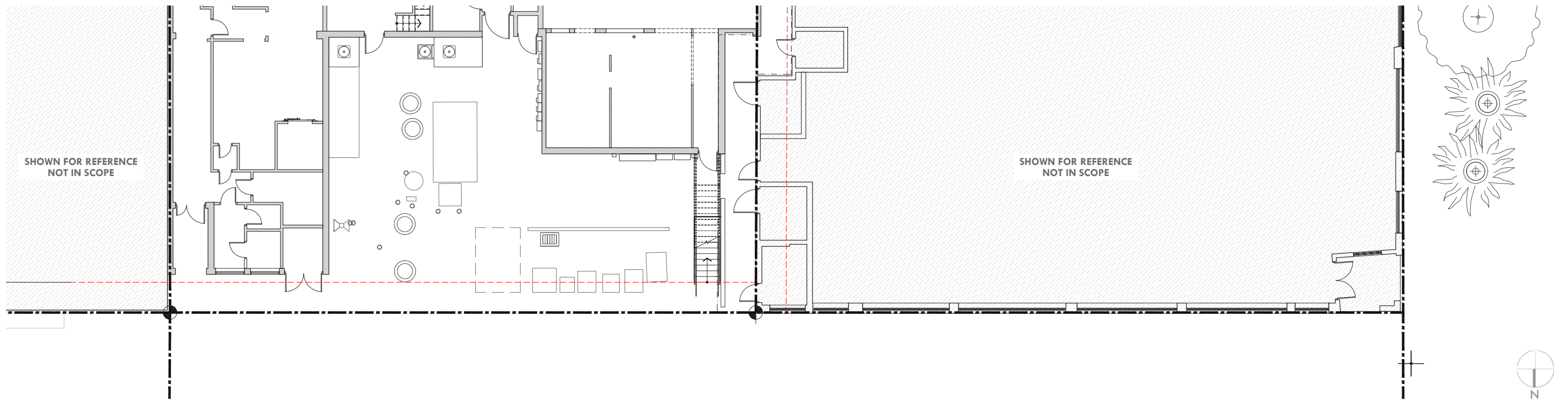


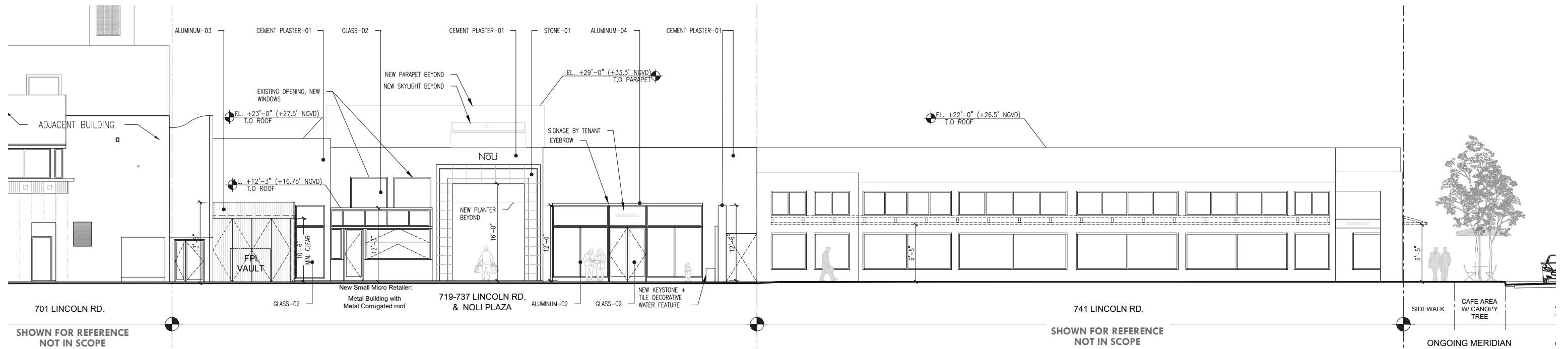
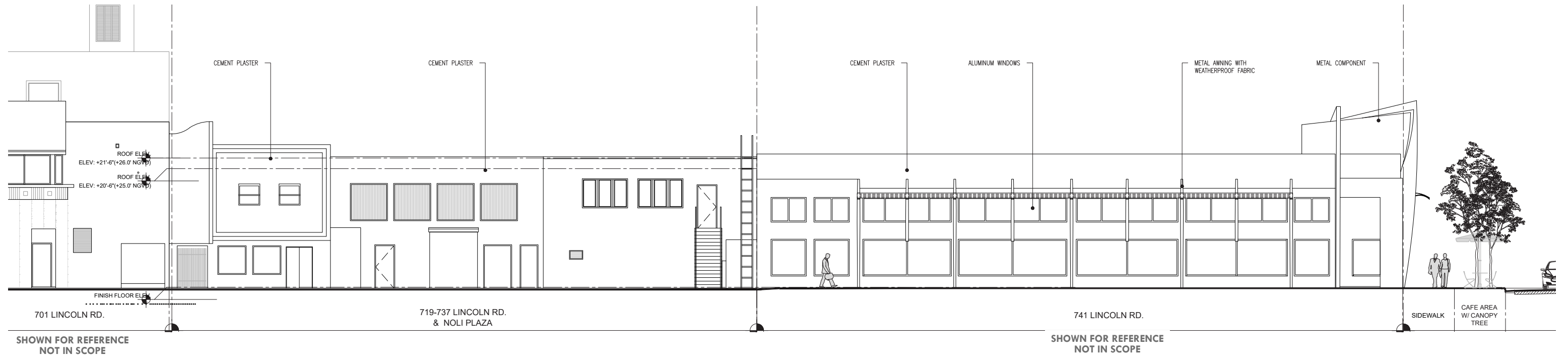
6

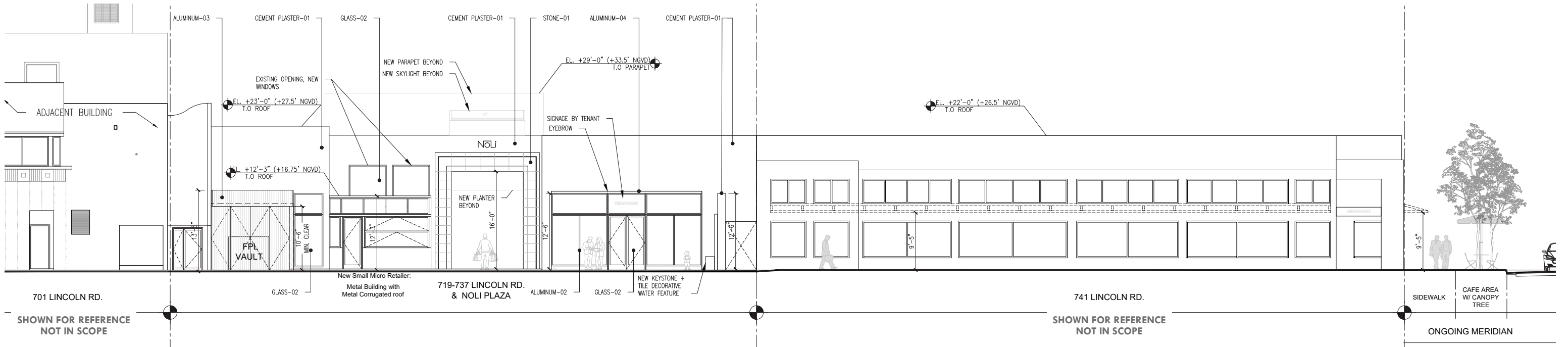
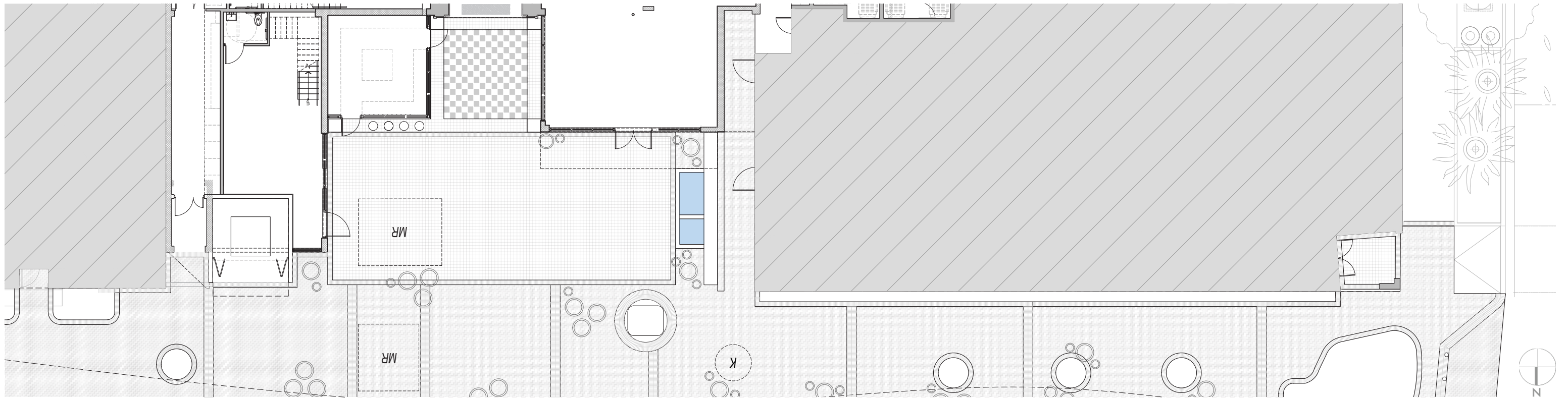
SHOWN FOR REFERENCE
NOT IN SCOPE



7









MATERIAL LEGEND:

| | |
|---------------------------------|--|
| AC-01 EXTERIOR AWNING-01 | EXTERIOR AWNING, POWDER-COATED ALUMINUM FRAME WITH UV-RESISTANT, WATERPROOF FABRIC. COLOR BY TENANT |
| AL-01 ALUMINUM-01 | ALUMINUM STRUCTURAL ELEMENTS AND BRAKE METAL SURFACES TO BE FINISHED IN LIGHT BRONZE (CHAMPAGNE) POWDER COAT OR SIMILAR. |
| AL-02 ALUMINUM-02 | ALUMINUM STRUCTURAL ELEMENTS AND BRAKE METAL SURFACES FINISHED IN LIGHT WALNUT BROWN POWDER COAT OR SIMILAR. |
| AL-03 ALUMINUM-03 | ALUMINUM CLADDING WITH WOOD-GRAIN FINISH, POWDER COATED, EXTERIOR GRADE. |
| AL-04 ALUMINUM-04 | ALUMINUM AND STEEL STRUCTURAL ELEMENTS AND BRAKE METAL SURFACES FINISHED IN DARK OXIDIZED BRONZE POWDER COAT OR SIMILAR |
| BRICK PAVERS | BRICK CONCRETE PAVERS - CHARCOAL AND LIGHT GREY IN HERRINGBONE AND LINEAR PATTERNS EMERGENCY VEHICLE LANE SHALL HAVE SUFFICIENT LOAD CAPACITY FOR TRUCKS |
| CM-01 CEMENT PLASTER-01 | THREE-COAT EXTERIOR CEMENT PLASTER ON RE-INFORCED CMU WALL, SMOOTH FINISH, PAINT (COLOR TBD). |
| GL-01 GLASS-01 | CLEAR, LAMINATED GLASS UNITS WITH LARGE MISSILE IMPACT INTERLAYER. METAL STRUCTURAL ELEMENTS, AND BRAKE METAL IN LIGHT BRONZE (CHAMPAGNE) POWDER COAT FINISH, OR SIMILAR |

| | |
|--------------------------------|---|
| GL-02 GLASS-02 | CLEAR, LAMINATED GLASS UNITS WITH LARGE MISSILE IMPACT INTERLAYER. METAL STRUCTURAL ELEMENTS, AND BRAKE METAL IN DARK OXIDIZED BRONZE POWDER COAT FINISH, OR SIMILAR. |
| MP-01 METAL PLANTERS-01 | HEAVY DUTY, EXTERIOR GRADE, DRAINAGE-READY, COATED METAL PLANTERS |
| STN-01 STONE-01 | 3/4" LIMESTONE TILES |
| STN-02 STONE-02 | 2" X 1.25" LIMESTONE TRIM |
| STN-04 STONE-04 | TRAVERTINE TRIM |
| PT-01 PORCELAIN TILE-01 | 3/8" PPORCELAIN - TRAVERTINE FINISH TILES |
| T-01 TERRAZZO-01 | CEMENTITIOUS TERRAZZO SURFACE ON CONCRETE CURB |
| T-02 TERRAZZO-02 | CEMENTITIOUS TERRAZZO IN BLACK AND WHITE, WITH 1/8" LIGHT BRONZE TRIM |
| W-01 WOOD-01 | EXTERIOR-GRADE WOOD CEILING WITH WEATHER-RESISTANT FINISH. |
| W-02 WOOD-02 | RECLAIMED WOOD CEILING (TALLER CEILING OF VIA NOLI) |
| RS-01 SHADE-01 | RETRACTABLE SHADE ON WEATHER-CONTROLLED SYSTEM, SUSPENDED FROM METAL "PERGOLA" STRUCTURE. UV-RESISTANT, WEATHERPROOF FABRIC (OFF-WHITE OR APPROVED EQUAL). |



NOLi

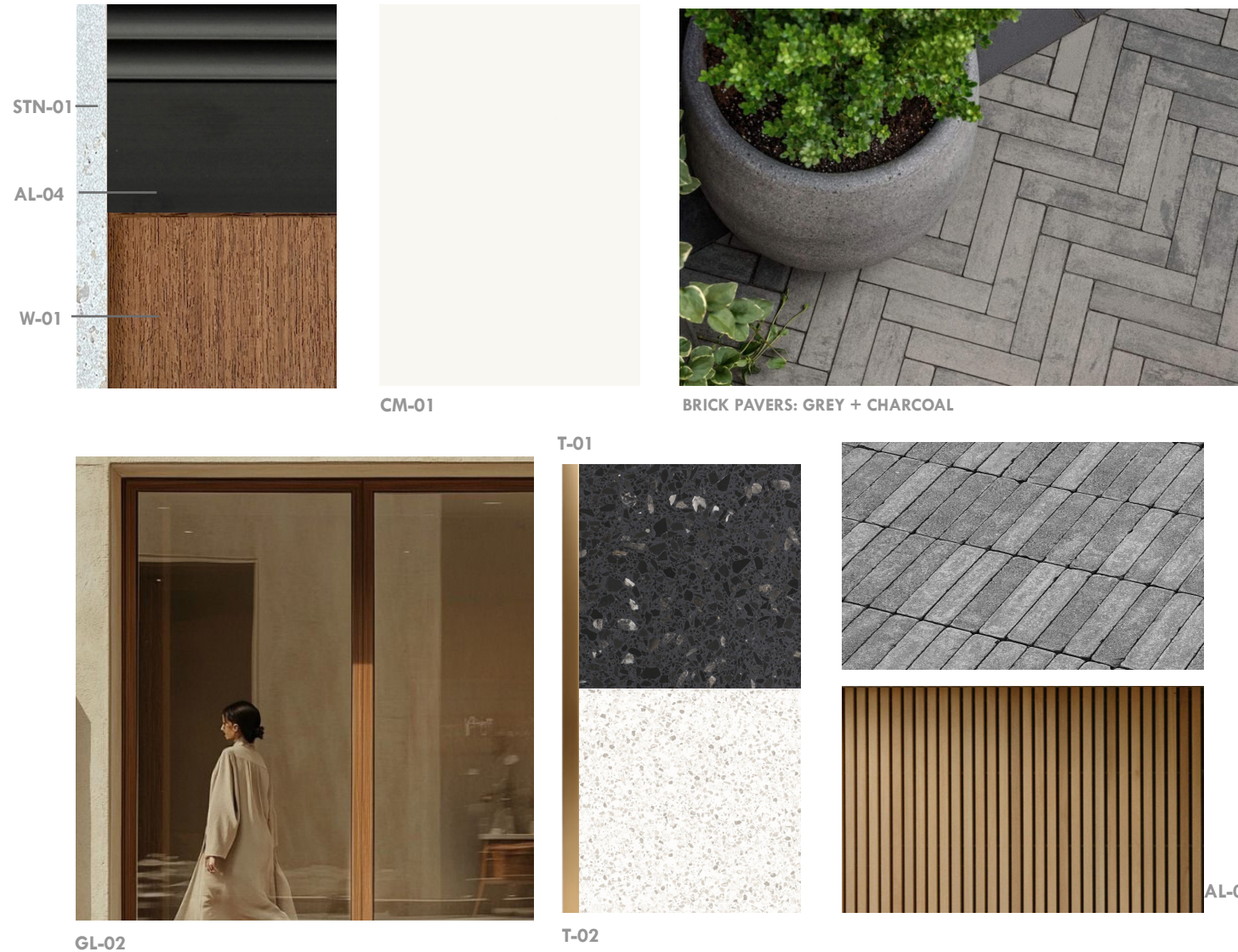
HISTORIC PRESERVATION BOARD | APRIL 5, 2026

PROPOSED ELEVATION - LINCOLN LANE

A3.11

SCALE: 1/16" = 1'-0"

NoLi Palette = Neutrals and Black and White, wood - adaptive reuse, shade



NoLi - Tenant Layers & Pop-Ups



CUSTOMIZED INLAIS: BLACK AND WHITE MOSAIC, CEMENT TILE OR TERRAZZO

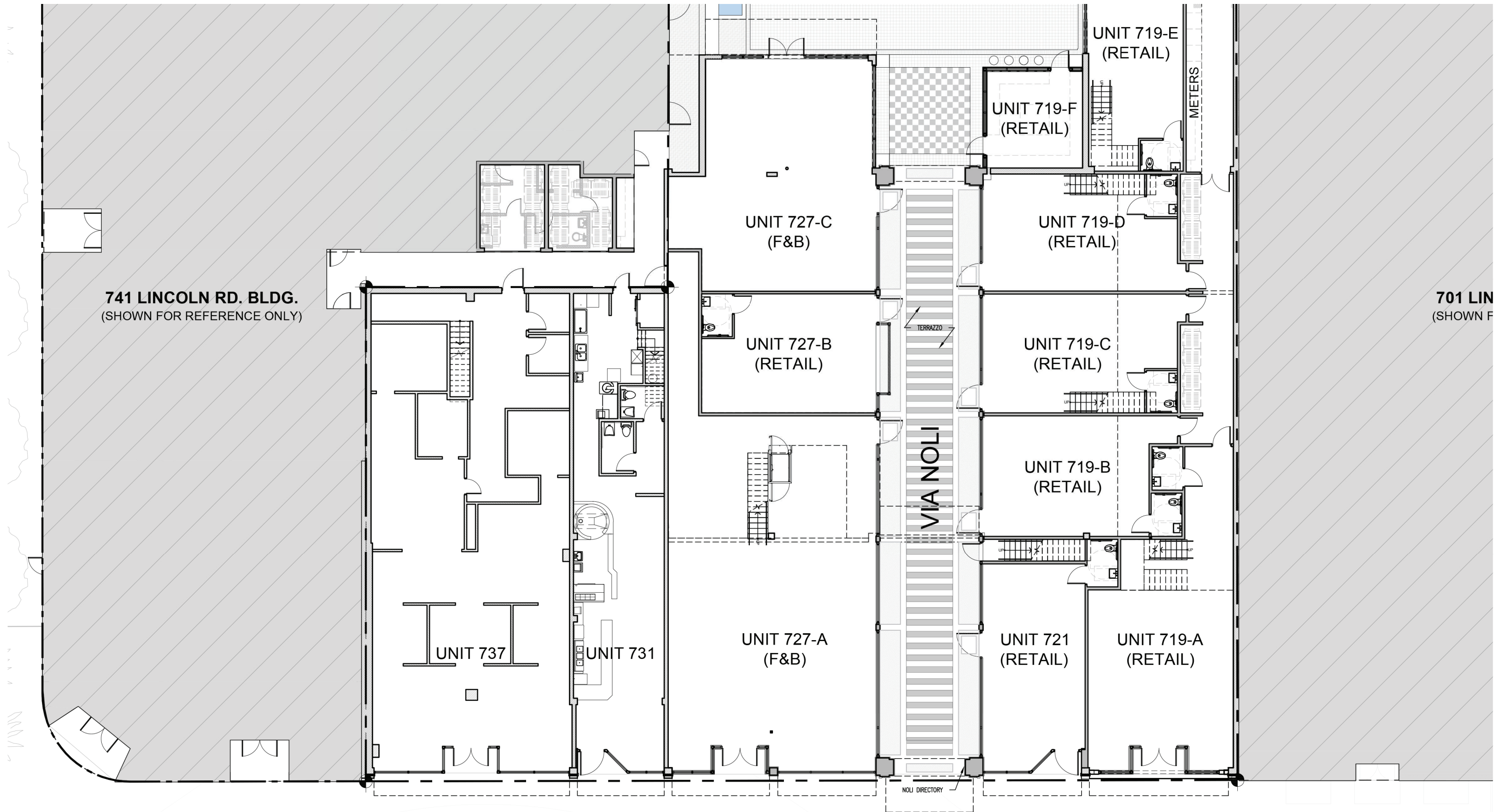
FFE AND POP UPS AND CULTURAL ACTIVATIONS MANAGED BY NOLI

MATERIAL LEGEND:

| | |
|---------------------------------|--|
| AC-01 EXTERIOR AWNING-01 | EXTERIOR AWNING, POWDER-COATED ALUMINUM FRAME WITH UV-RESISTANT, WATERPROOF FABRIC. COLOR BY TENANT |
| AL-01 ALUMINUM-01 | ALUMINUM STRUCTURAL ELEMENTS AND BRAKE METAL SURFACES TO BE FINISHED IN LIGHT BRONZE (CHAMPAGNE) POWDER COAT OR SIMILAR. |
| AL-02 ALUMINUM-02 | ALUMINUM STRUCTURAL ELEMENTS AND BRAKE METAL SURFACES FINISHED IN LIGHT WALNUT BROWN POWDER COAT OR SIMILAR. |
| AL-03 ALUMINUM-03 | ALUMINUM CLADDING WITH WOOD-GRAIN FINISH, POWDER COATED, EXTERIOR GRADE. |
| AL-04 ALUMINUM-04 | ALUMINUM AND STEEL STRUCTURAL ELEMENTS AND BRAKE METAL SURFACES FINISHED IN DARK OXIDIZED BRONZE POWDER COAT OR SIMILAR |
| BRICK PAVERS | BRICK CONCRETE PAVERS - CHARCOAL AND LIGHT GREY IN HERRINGBONE AND LINEAR PATTERNS EMERGENCY VEHICLE LANE SHALL HAVE SUFFICIENT LOAD CAPACITY FOR TRUCKS |
| CM-01 CEMENT PLASTER-01 | THREE-COAT EXTERIOR CEMENT PLASTER ON RE-INFORCED CMU WALL, SMOOTH FINISH, PAINT (COLOR TBD). |
| GL-01 GLASS-01 | CLEAR, LAMINATED GLASS UNITS WITH LARGE MISSILE IMPACT INTERLAYER. METAL STRUCTURAL ELEMENTS, AND BRAKE METAL IN LIGHT BRONZE (CHAMPAGNE) POWDER COAT FINISH, OR SIMILAR |

| | |
|--------------------------------|---|
| GL-02 GLASS-02 | CLEAR, LAMINATED GLASS UNITS WITH LARGE MISSILE IMPACT INTERLAYER. METAL STRUCTURAL ELEMENTS, AND BRAKE METAL IN DARK OXIDIZED BRONZE POWDER COAT FINISH, OR SIMILAR. |
| MP-01 METAL PLANTERS-01 | HEAVY DUTY, EXTERIOR GRADE, DRAINAGE-READY, COATED METAL PLANTERS |
| STN-01 STONE-01 | 3/4" LIMESTONE TILES |
| STN-02 STONE-02 | 2" X 1.25" LIMESTONE TRIM |
| STN-04 STONE-04 | TRAVERTINE TRIM |
| PT-01 PORCELAIN TILE-01 | 3/8" PPORCELAIN - TRAVERTINE FINISH TILES |
| T-01 TERRAZZO-01 | CEMENTITIOUS TERRAZZO SURFACE ON CONCRETE CURB |
| T-02 TERRAZZO-02 | CEMENTITIOUS TERRAZZO IN BLACK AND WHITE, WITH 1/8" LIGHT BRONZE TRIM |
| W-01 WOOD-01 | EXTERIOR-GRADE WOOD CEILING WITH WEATHER-RESISTANT FINISH. |
| W-02 WOOD-02 | RECLAIMED WOOD CEILING (TALLER CEILING OF VIA NOLI) |
| RS-01 SHADE-01 | RETRACTABLE SHADE ON WEATHER-CONTROLLED SYSTEM, SUSPENDED FROM METAL "PERGOLA" STRUCTURE. UV-RESISTANT, WEATHERPROOF FABRIC (OFF-WHITE OR APPROVED EQUAL). |





741 LINCOLN RD. BLDG.
(SHOWN FOR REFERENCE ONLY)

701 LIN
(SHOWN F)

VIA NOLI

TERRAZZO

METERS

NOLI DIRECTORY







FOR CONTEXT ONLY



LIGHTING

Lighting Strategy: Lincoln Road



Lincoln Road Understated & Refined

Lighting along Lincoln Road should remain subtle and integrated into the architecture.

Lighting Includes:

- Concealed parapet edge lighting, creating a soft architectural halo
- Wall blade lights incorporated into the facades
- Uplighting for new palm trees

Tree Lighting

Tree mounted downlights ("moonlighting") in canopy trees.

Typical

- 800-1200 Lumens
- 30-60" beam,
- 2700K
- IP66 / IP67

Lighting Strategy: Lincoln Lane



NoLi Lane + Plaza Social Gathering Space

The interior lane is intended to feel more intimate and lively, supporting restaurants, boutiques, and cultural programming.

Lighting Includes:

- Festoon lighting between buildings and trees
- Tree canopy “moonlighting”
- Architectural wall sconces
- Landscape accent lighting
- Limited bollards where needed

Tree Lighting

Tree mounted downlights (“moonlighting”) in canopy trees.

Typical

- 800-1200 Lumens
- 30-60” beam,
- 2700K
- IP66 / IP67

Bollards

Used sparingly along planting edges or seating areas