

# VIA NOLI



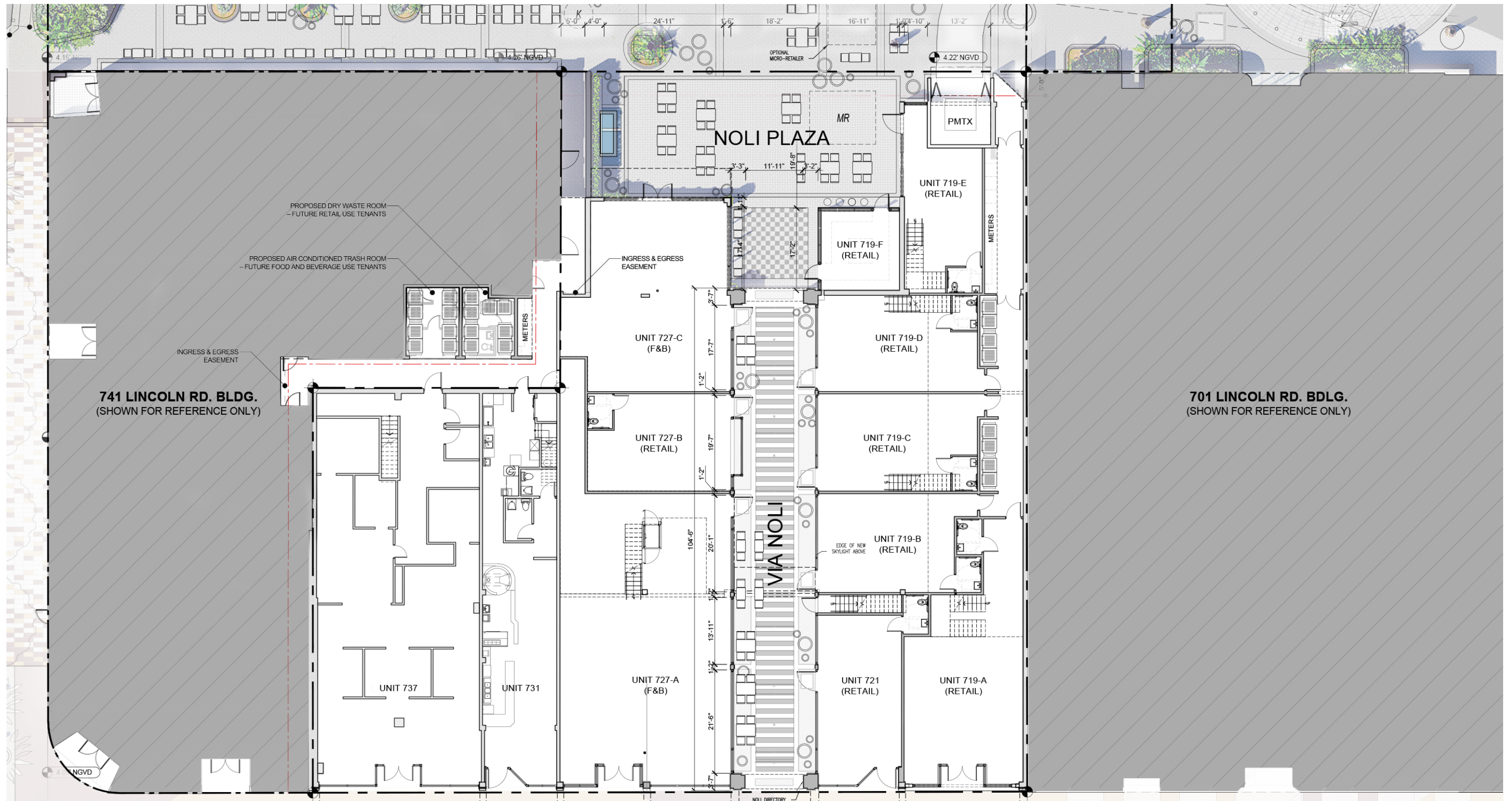
Digitally signed  
by Jose L. Gomez  
Date: 2026.04.04  
10:45:21 -04'00'

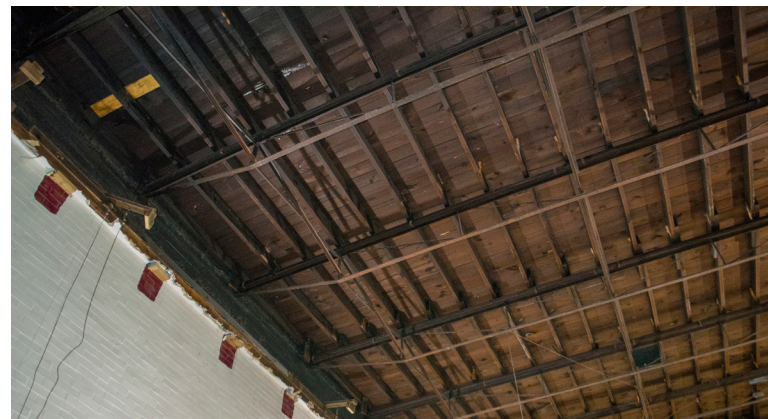


comras company  
*redefining retail*

NOLi

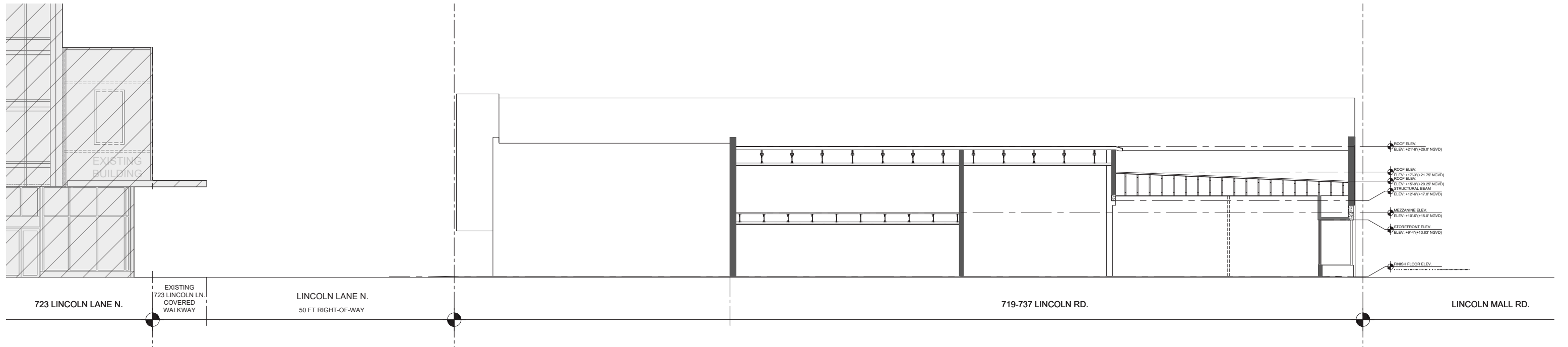
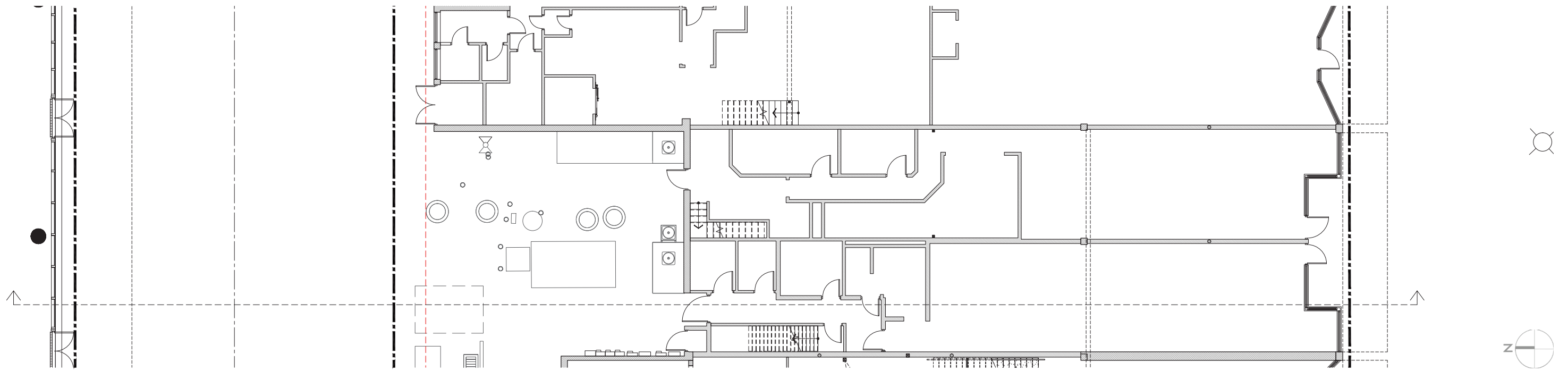
HISTORIC PRESERVATION BOARD | APRIL 5, 2026

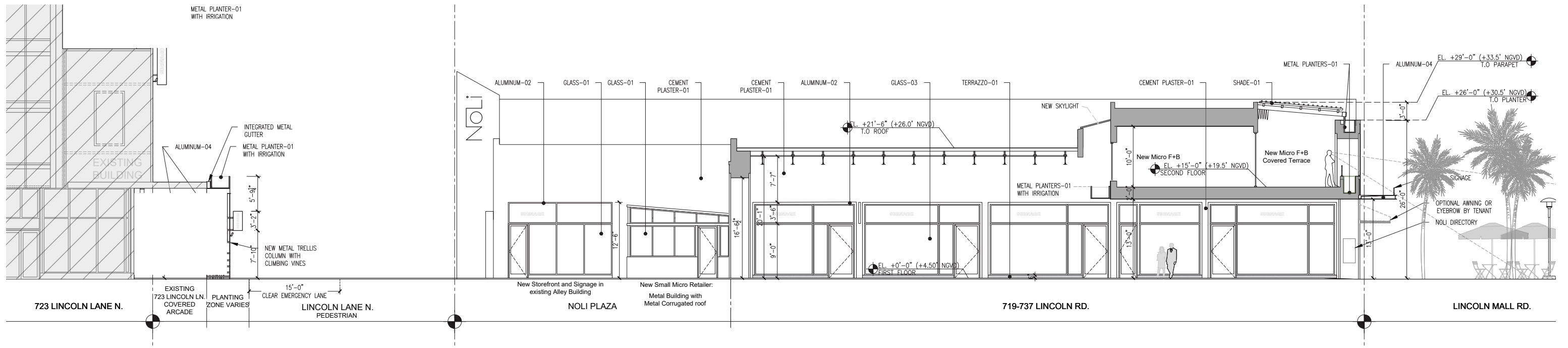
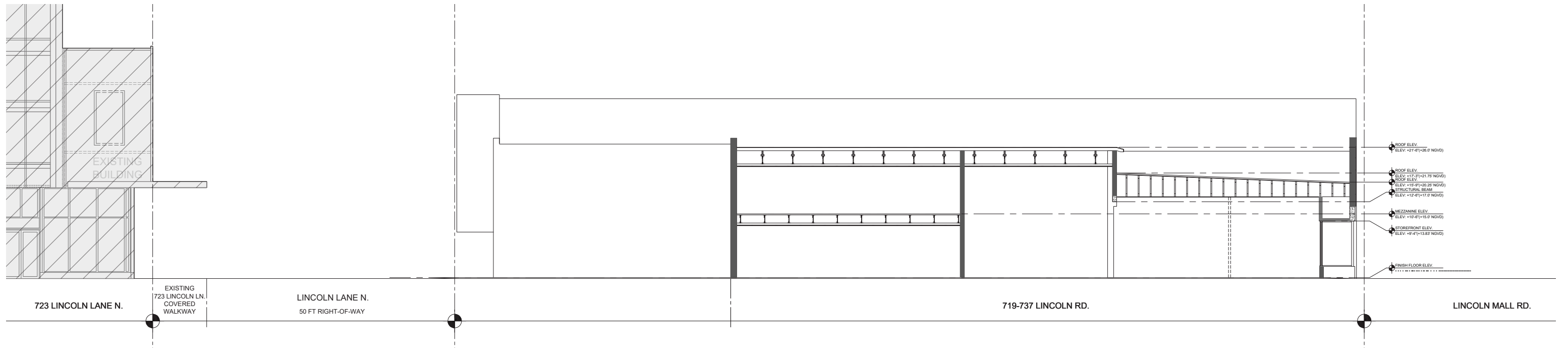


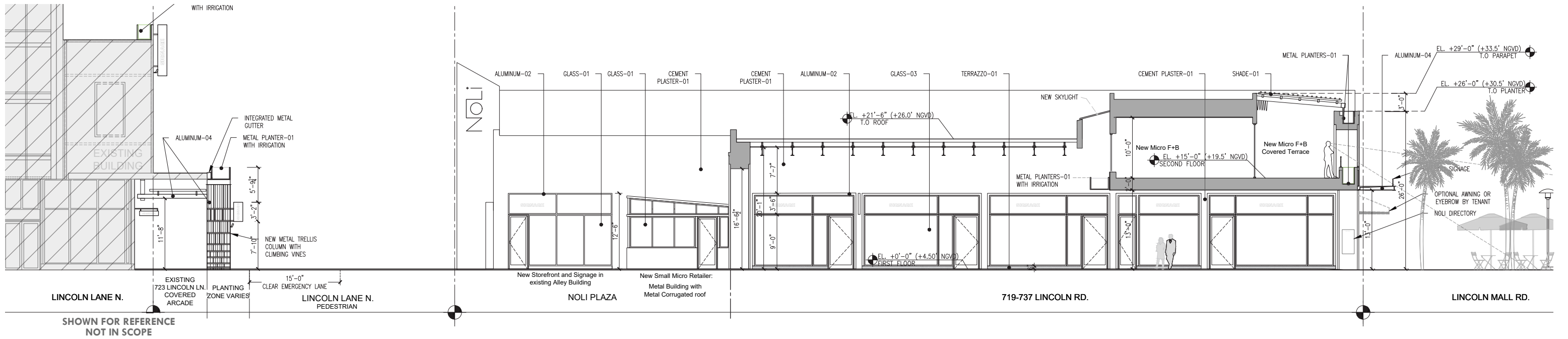
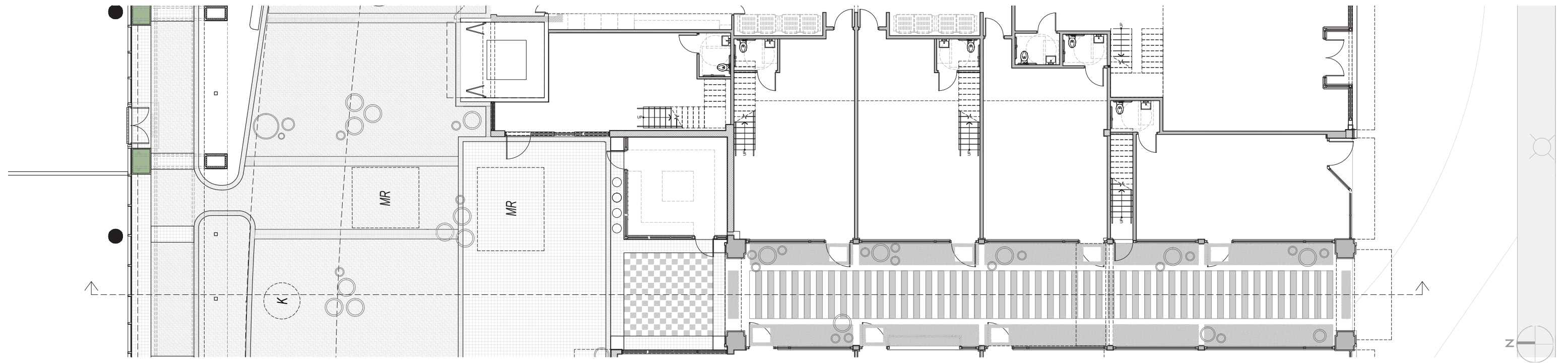


# Pedestrian Arcade Precedents











**MATERIAL LEGEND:**

AC-01	EXTERIOR AWNING-01	EXTERIOR AWNING, POWDER-COATED ALUMINUM FRAME WITH UV-RESISTANT, WATERPROOF FABRIC. COLOR BY TENANT
AL-01	ALUMINUM-01	ALUMINUM STRUCTURAL ELEMENTS AND BRAKE METAL SURFACES TO BE FINISHED IN LIGHT BRONZE (CHAMPAGNE) POWDER COAT OR SIMILAR.
AL-02	ALUMINUM-02	ALUMINUM STRUCTURAL ELEMENTS AND BRAKE METAL SURFACES FINISHED IN LIGHT WALNUT BROWN POWDER COAT OR SIMILAR.
AL-03	ALUMINUM-03	ALUMINUM CLADDING WITH WOOD-GRAIN FINISH, POWDER COATED, EXTERIOR GRADE.
AL-04	ALUMINUM-04	ALUMINUM AND STEEL STRUCTURAL ELEMENTS AND BRAKE METAL SURFACES FINISHED IN DARK OXIDIZED BRONZE POWDER COAT OR SIMILAR
BRICK PAVERS		BRICK CONCRETE PAVERS - CHARCOAL AND LIGHT GREY IN HERRINGBONE AND LINEAR PATTERNS EMERGENCY VEHICLE LANE SHALL HAVE SUFFICIENT LOAD CAPACITY FOR TRUCKS
CM-01	CEMENT PLASTER-01	THREE-COAT EXTERIOR CEMENT PLASTER ON RE-INFORCED CMU WALL, SMOOTH FINISH, PAINT (COLOR TBD).
GL-01	GLASS-01	CLEAR, LAMINATED GLASS UNITS WITH LARGE MISSILE IMPACT INTERLAYER. METAL STRUCTURAL ELEMENTS, AND BRAKE METAL IN LIGHT BRONZE (CHAMPAGNE) POWDER COAT FINISH, OR SIMILAR

GL-02	GLASS-02	CLEAR, LAMINATED GLASS UNITS WITH LARGE MISSILE IMPACT INTERLAYER. METAL STRUCTURAL ELEMENTS, AND BRAKE METAL IN DARK OXIDIZED BRONZE POWDER COAT FINISH, OR SIMILAR.
MP-01	METAL PLANTERS-01	HEAVY DUTY, EXTERIOR GRADE, DRAINAGE-READY, COATED METAL PLANTERS
STN-01	STONE-01	3/4" LIMESTONE TILES
STN-02	STONE-02	2" X 1.25" LIMESTONE TRIM
STN-04	STONE-04	TRAVERTINE TRIM
PT-01	PORCELAIN TILE-01	3/8" PPORCELAIN - TRAVERTINE FINISH TILES
T-01	TERRAZZO-01	CEMENTITIOUS TERRAZZO SURFACE ON CONCRETE CURB
T-02	TERRAZZO-02	CEMENTITIOUS TERRAZZO IN BLACK AND WHITE, WITH 1/8" LIGHT BRONZE TRIM
W-01	WOOD-01	EXTERIOR-GRADE WOOD CEILING WITH WEATHER-RESISTANT FINISH.
W-02	WOOD-02	RECLAIMED WOOD CEILING (TALLER CEILING OF VIA NOLI)
RS-01	SHADE-01	RETRACTABLE SHADE ON WEATHER-CONTROLLED SYSTEM, SUSPENDED FROM METAL "PERGOLA" STRUCTURE. UV-RESISTANT, WEATHERPROOF FABRIC (OFF-WHITE OR APPROVED EQUAL).



NOLi

HISTORIC PRESERVATION BOARD | APRIL 5, 2026

PROPOSED SECTION - VIA NOLI

A2.7

SCALE: 1/16" = 1'-0"



