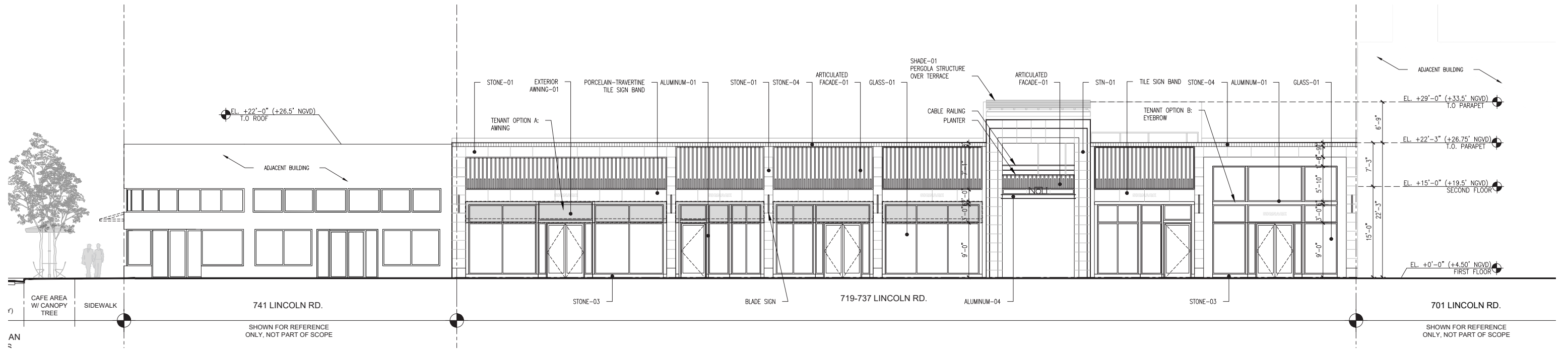
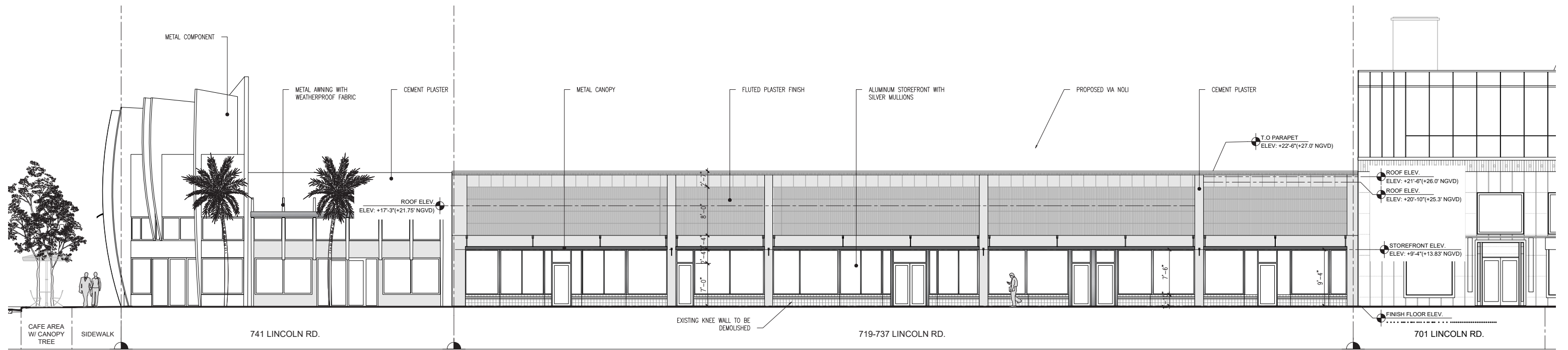


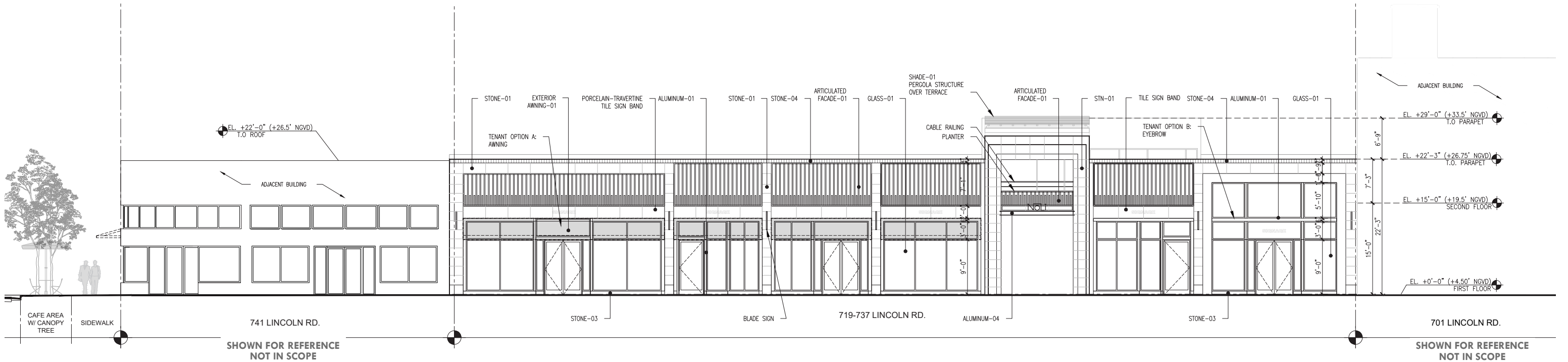
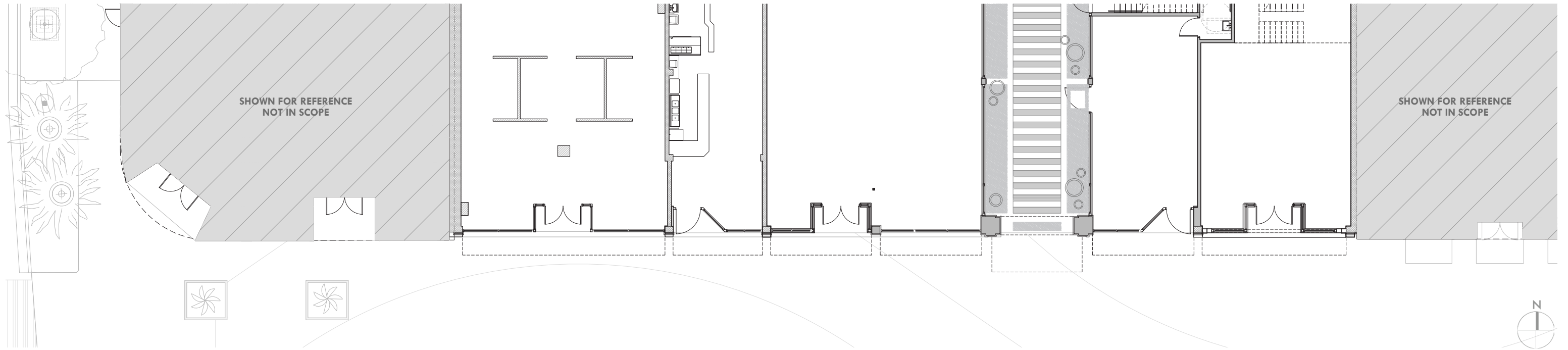
Digitally signed
 by Jose L Gomez
 Date: 2026.04.04
 10:44:36 -04'00'

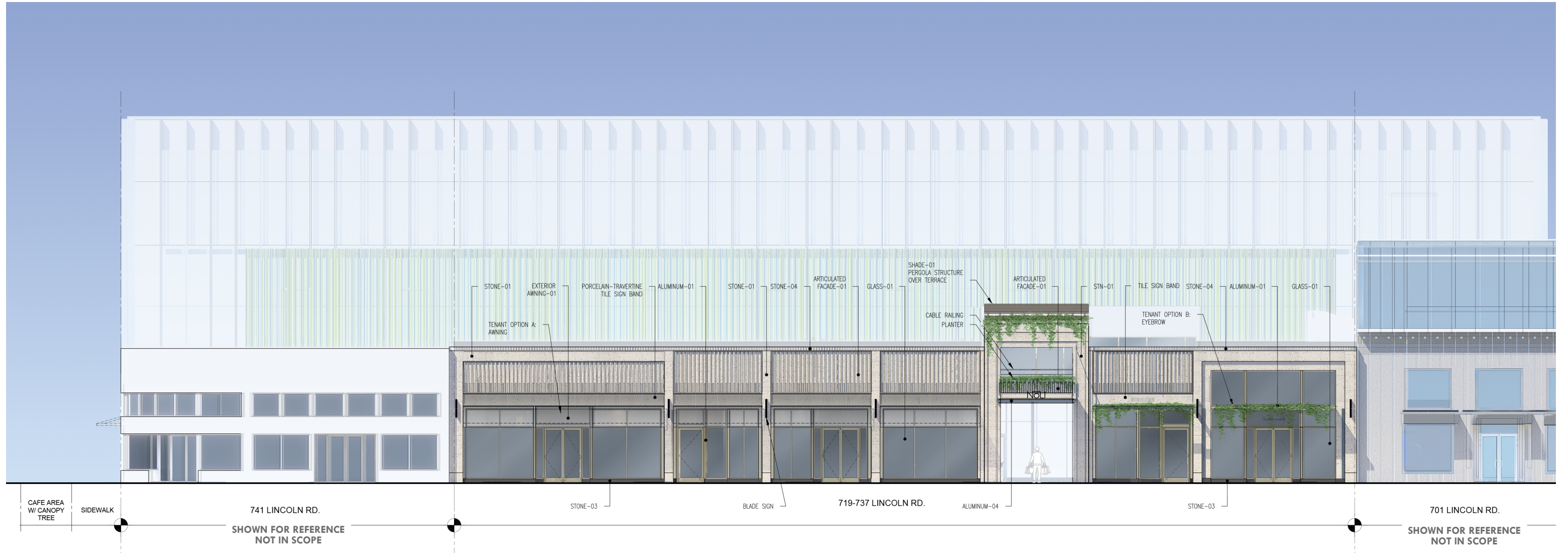


NOLi
 HISTORIC PRESERVATION BOARD | APRIL 5, 2026

EXISTING ELEVATION - LINCOLN ROAD A1.13
 SCALE: 1/16" - 1'-0"





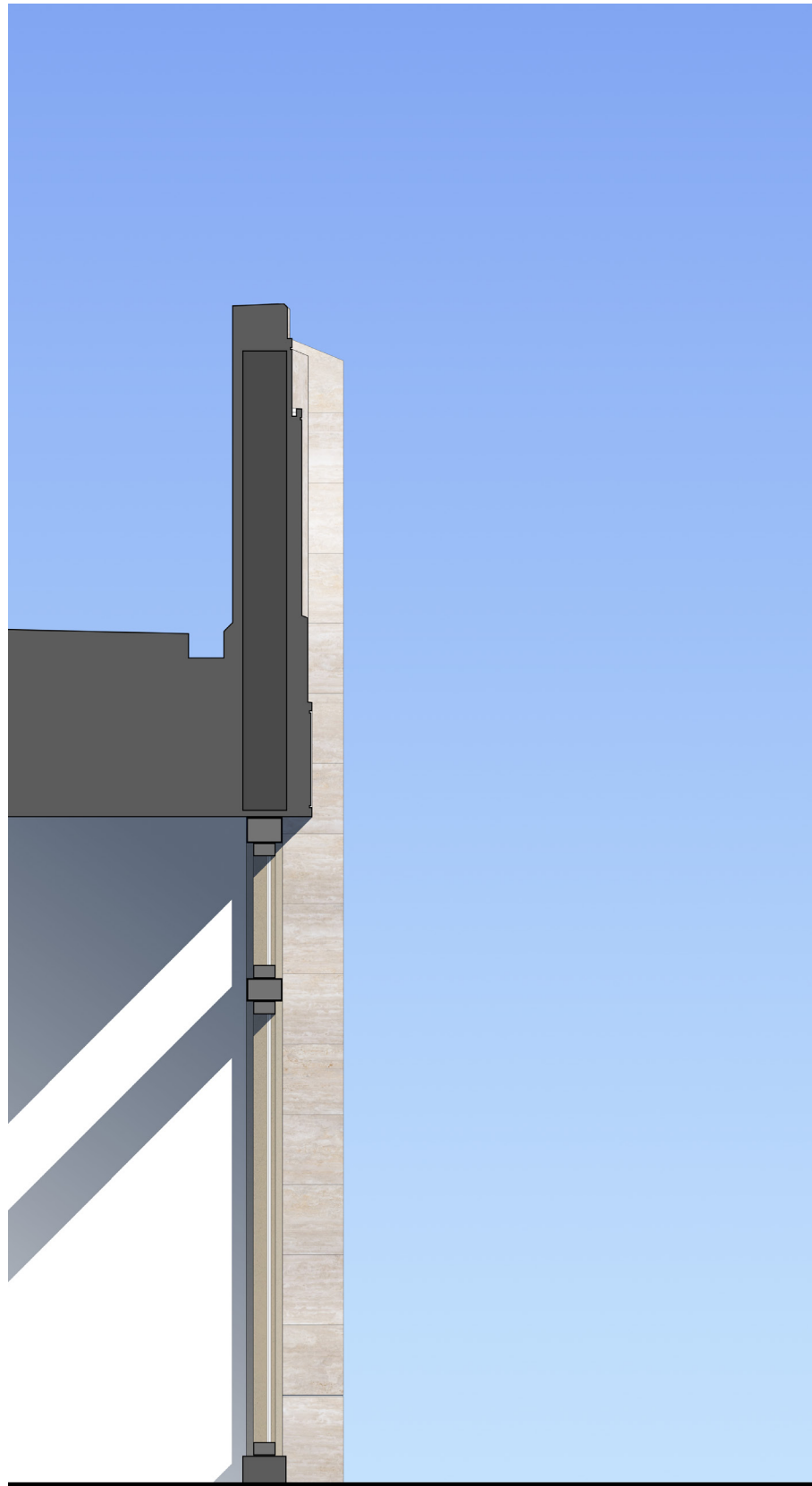


MATERIAL LEGEND:

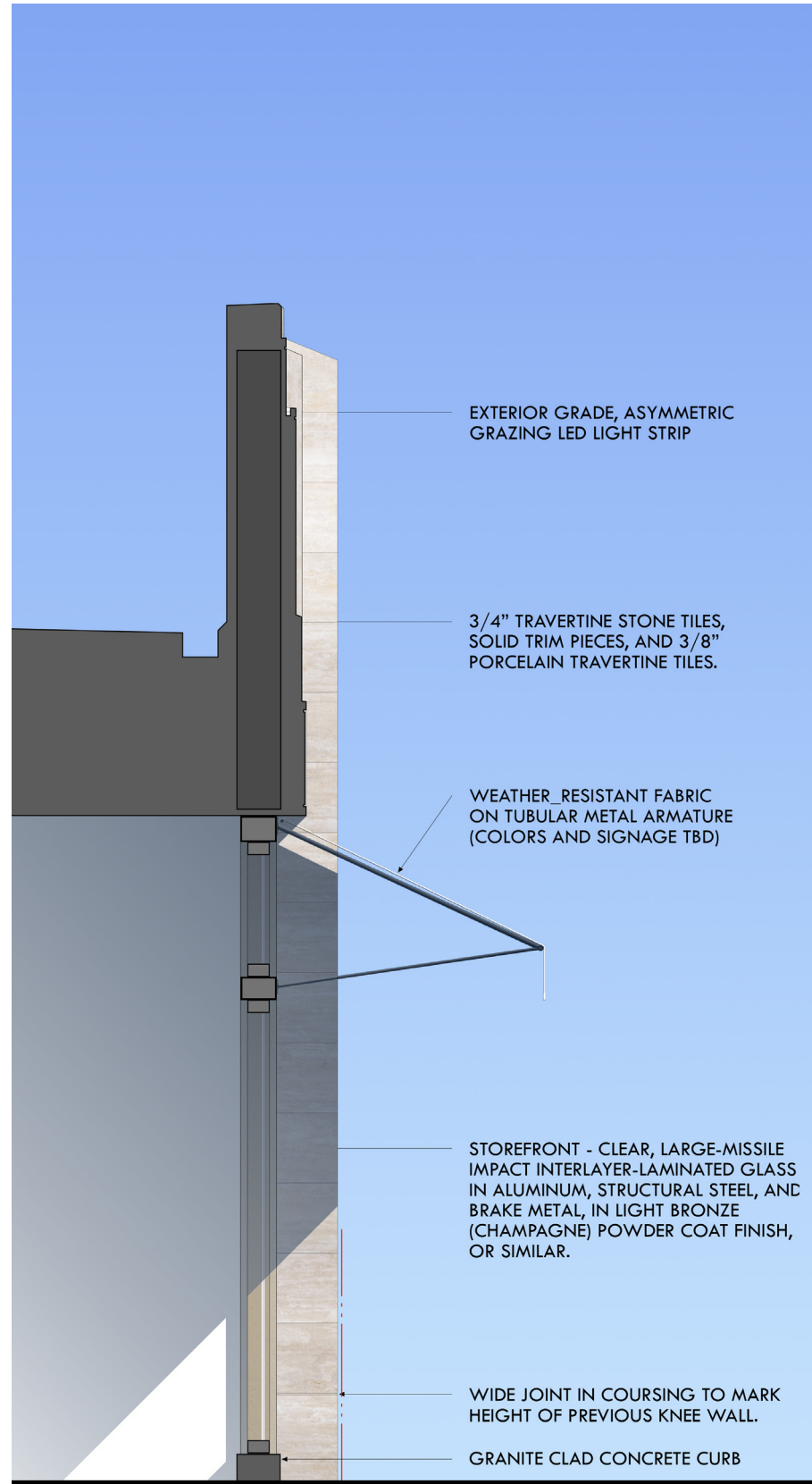
<p>AC-01 EXTERIOR AWNING-01 EXTERIOR AWNING, POWDER-COATED ALUMINUM FRAME WITH UV-RESISTANT, WATERPROOF FABRIC. COLOR BY TENANT</p> <p>AL-01 ALUMINUM-01 ALUMINUM STRUCTURAL ELEMENTS AND BRASS METAL SURFACES TO BE FINISHED IN LIGHT BRONZE (CHAMPAGNE) POWDER COAT OR SIMILAR.</p> <p>AL-04 ALUMINUM-04 ALUMINUM AND STEEL STRUCTURAL ELEMENTS AND BRASS METAL SURFACES FINISHED IN DARK OXIDIZED BRONZE POWDER COAT OR APPROVED ALTERNATE</p> <p>GL-01 GLASS-01 CLEAR, LAMINATED GLASS UNITS WITH LARGE MISSILE IMPACT INTERLAYER. METAL STRUCTURAL ELEMENTS, AND BRASS METAL IN LIGHT BRONZE (CHAMPAGNE) POWDER COAT FINISH, OR SIMILAR</p> <p>GL-02 GLASS-02 CLEAR, LAMINATED GLASS UNITS WITH LARGE MISSILE IMPACT INTERLAYER. METAL STRUCTURAL ELEMENTS, AND BRASS METAL IN DARK OXIDIZED BRONZE POWDER COAT FINISH, OR SIMILAR.</p>	<p>MP-01 METAL PLANTERS-01 HEAVY DUTY, EXTERIOR GRADE, DRAINAGE-READY, COATED METAL PLANTERS</p> <p>AF-01 ARTICULATED FACADE-01 ARTICULATED PORCELAIN AND STONE TILE FACADE, WITH SOLID TRIM ADHERED TO REINFORCED MASONRY WALL. STN-01 STONE-01 3/4" TRAVERTINE TILES STN-02 STONE-02 2" X 1.25" TRAVERTINE TRIM PIECES TILES STN-03 STONE-03 FLAME-FINISHED BLACK GRANITE STN-04 STONE-04 TRAVERTINE TRIM</p> <p>T-01 TERRAZZO-01 CEMENTITIOUS TERRAZZO SURFACE ON CONCRETE CURB</p> <p>W-01 WOOD-01 EXTERIOR-GRADE WOOD CEILING WITH WEATHER-RESISTANT FINISH OR METAL ALTERNATIVE ARMSTRONG OR EQUIVALENT</p> <p>RS-01 SHADE-01 RETRACTABLE SHADE ON WEATHER-CONTROLLED SYSTEM, SUSPENDED FROM METAL "PERGOLA" STRUCTURE. UV-RESISTANT, WEATHERPROOF FABRIC (OFF-WHITE OR APPROVED EQUAL).</p>
---	---



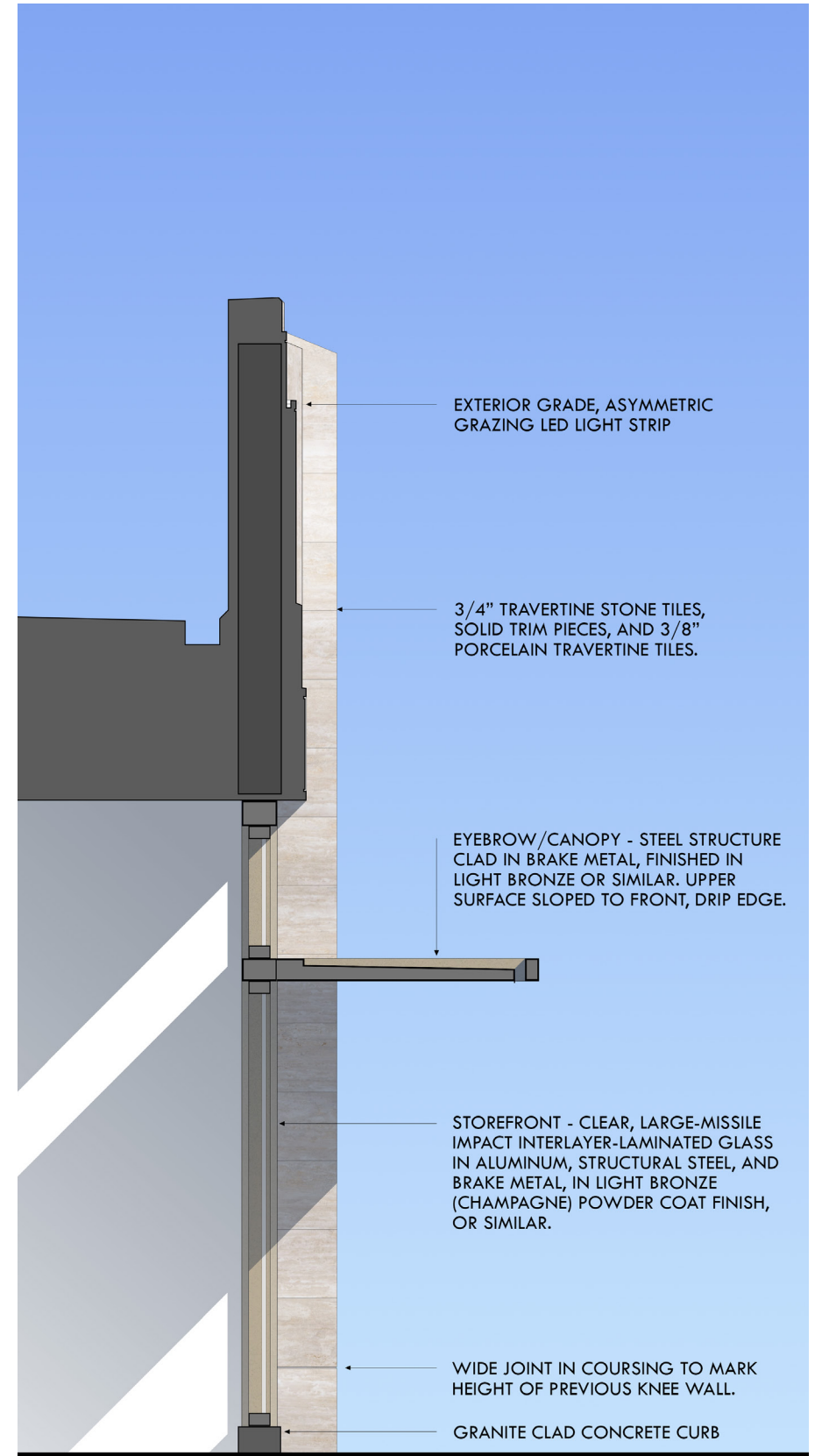




STOREFRONT



OPTION A: AWNING



OPTION B: EYEBROW

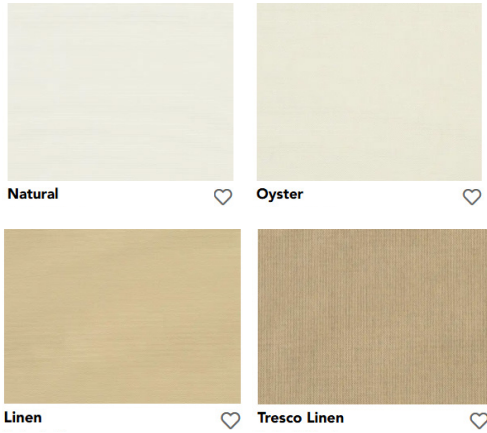


MATERIAL LEGEND:

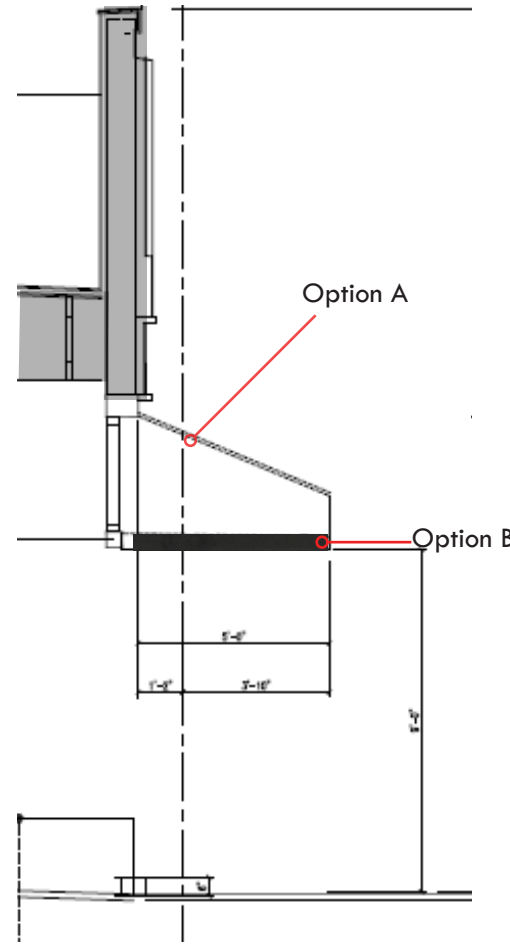
AL-01 ALUMINUM-01	ALUMINUM STRUCTURAL ELEMENTS AND BRAKE METAL SURFACES TO BE FINISHED IN LIGHT BRONZE (CHAMPAGNE) POWDER COAT OR SIMILAR.
AL-04 ALUMINUM-04	ALUMINUM AND STEEL STRUCTURAL ELEMENTS AND BRAKE METAL SURFACES FINISHED IN DARK OXIDIZED BRONZE POWDER COAT OR APPROVED ALTERNATE
GL-01 GLASS-01	CLEAR, LAMINATED GLASS UNITS WITH LARGE MISSILE IMPACT INTERLAYER. METAL STRUCTURAL ELEMENTS, AND BRAKE METAL IN LIGHT BRONZE (CHAMPAGNE) POWDER COAT FINISH, OR SIMILAR
GL-02 GLASS-02	CLEAR, LAMINATED GLASS UNITS WITH LARGE MISSILE IMPACT INTERLAYER. METAL STRUCTURAL ELEMENTS, AND BRAKE METAL IN DARK OXIDIZED BRONZE POWDER COAT FINISH, OR SIMILAR.
MP-01 METAL PLANTERS-01	HEAVY DUTY, EXTERIOR GRADE, DRAINAGE-READY, COATED METAL PLANTERS

AF-01 ARTICULATED FACADE-01	ARTICULATED PORCELAIN AND STONE TILE FACADE, WITH SOLID TRIM ADHERED TO REINFORCED MASONRY WALL.
STN-01 STONE-01	3/4" TRAVERTINE TILES
STN-02 STONE-02	2" X 1.25" TRAVERTINE TRIM PIECES TILES
STN-03 STONE-03	FLAME-FINISHED BLACK GRANITE
STN-04 STONE-04	TRAVERTINE TRIM
T-01 TERRAZZO-01	CEMENTITIOUS TERRAZZO SURFACE ON CONCRETE CURB
W-01 WOOD-01	EXTERIOR-GRADE WOOD CEILING WITH WEATHER-RESISTANT FINISH OR METAL ALTERNATIVE ARMSTRONG OR EQUIVALENT
RS-01 SHADE-01	RETRACTABLE SHADE ON WEATHER-CONTROLLED SYSTEM, SUSPENDED FROM METAL "PERGOLA" STRUCTURE. UV-RESISTANT, WEATHERPROOF FABRIC (OFF-WHITE OR APPROVED EQUAL).

Option A: Awning



Option B: Eyebrow



Choice by Tenant

MATERIAL LEGEND:

- AC-01 EXTERIOR AWNING-01 EXTERIOR AWNING, POWDER-COATED ALUMINUM FRAME WITH UV-RESISTANT, WATERPROOF FABRIC. COLOR BY TENANT
- AL-04 ALUMINUM-04 ALUMINUM AND STEEL STRUCTURAL ELEMENTS AND BRASS METAL SURFACES FINISHED IN DARK OXIDIZED BRONZE POWDER COAT OR APPROVED ALTERNATE





