

## Relevant Experience

### Rosewood Residences Beverly Hills, California



Type	Entitlement and Mixed-use development: Residential, Retail and Public Parking
Size	192,860 SF   17 Units
Brand	Rosewood Hotels & Resorts
Designer	Thomas Juul Hansen, MVE
Status	Completed in 2025

### Austin Proper Hotel & Residences, Texas



Type	Mixed-use development: Residential and Hotel
Size	192,860 SF   99 Units   244 Keys
Brand	Proper Hotels
Designer	Kelly Wearstler, Handel Architects
Status	Completed in 2020

## Relevant Experience

### 1122 Madison Avenue, New York



Type	Mixed-use development Residential and Retail
Size	134,731 SF   26 Units
Designer	Studio Sofield, Hill West Architects
Status	Under Construction

### 152 Elizabeth, New York



Type	Mixed-use development: Residential and Retail
Size	31,638 SF   7 Units
Designer	Tadao Ando, Pritzker Prize Winning Architect
Status	Completed in 2017

A photograph of the Raleigh Hotel building, a multi-story structure with a prominent white 'R' logo on the top left corner. The building features a mix of white and light blue panels and numerous windows. The image is overlaid with a semi-transparent grid pattern. The text is centered over the building.

# RALEIGH HOTEL

Installation Progress of Building Protection System

Report Date: April 14, 2026

## RALEIGH HOTEL: Installation Progress of Building Protection System

### **Shoring Installation Completion = 90%**

- 100% completion at Level 0 (Basement)
- 75% completion at Levels 1 to 1.5 (Mezzanine)
- Pending West side over Lower Lobby terrazzo slab on grade
- 90% completion at Levels 2 to 6
- Pending column shoring on West side due to discontinuity at Level 1 Lower - Lobby terrazzo slab below

### **Scaffold Installation Completion = 100%**

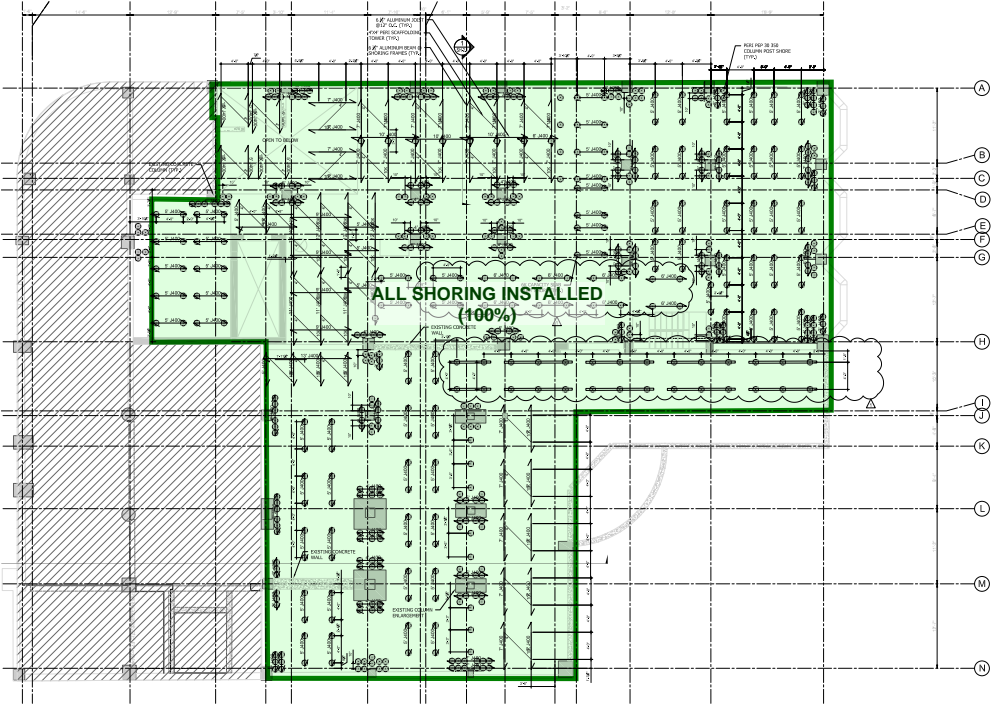
### **Scaffold Netting Installation Completion = 100%**



# INTERIOR: Shoring Completion on Level 0 (Basement) : 100 %



1012 Demolition Basement/Foundation Slab-on-Grade & Beam



Color Legend:

- No Shoring Installed
- Shoring Partially Installed
- All Shoring Completed



1012 Demolition Basement/Foundation Slab-on-Grade & Beam



1019 Shoring at Basement



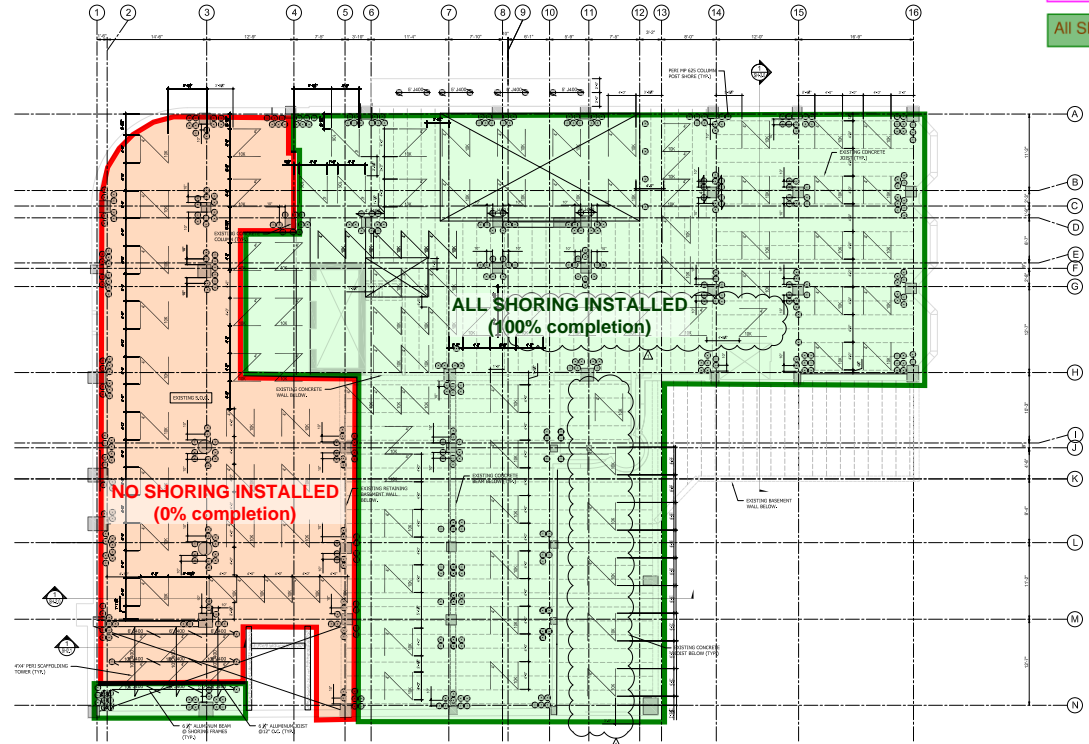
1019 Shoring at Basement

# INTERIOR: Shoring Completion on Level 1 (Ground Level) : 75 %

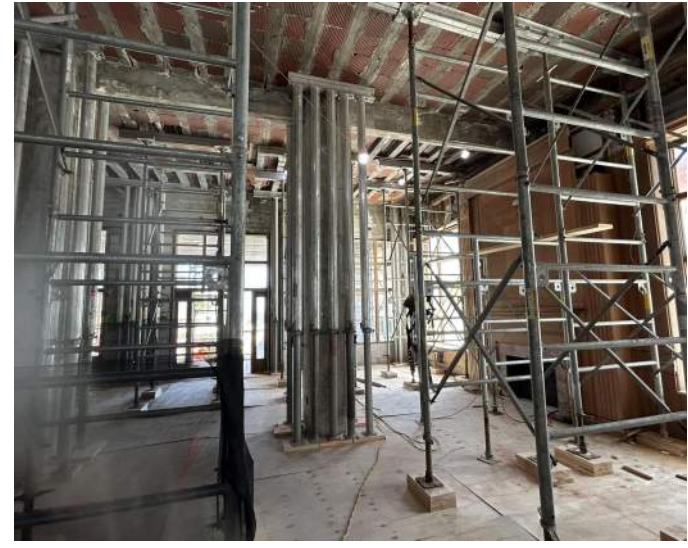
LOWER LOBBY – WEST AREA - NOT INSTALLED DUE TO UNSUPPORTED TERRAZZO SLAB

Color Legend:

- No Shoring Installed
- Shoring Partially Installed
- All Shoring Completed



West side of lobby, currently has no shoring and/or bracing.



1020 Shoring at Ground

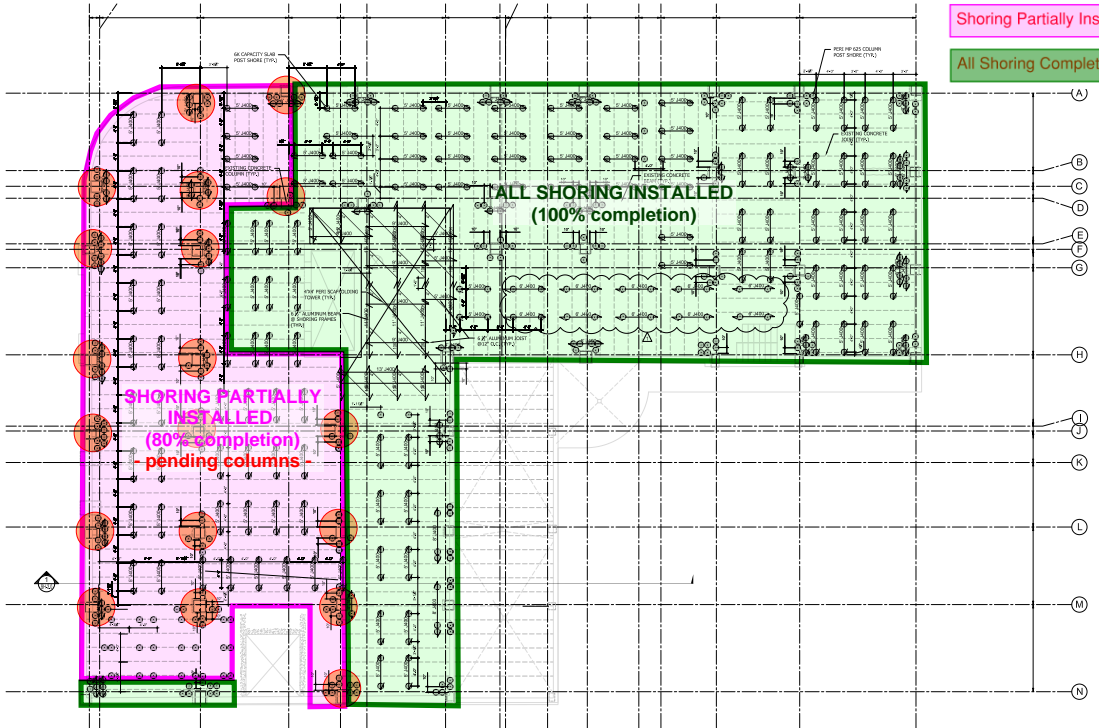
1011 Demolition Ground Floor

East side of lobby has shoring and/or bracing.

# INTERIOR: Shoring Completion on Levels 2 - 6: 90 %

Color Legend:

- No Shoring Installed
- Shoring Partially Installed
- All Shoring Completed



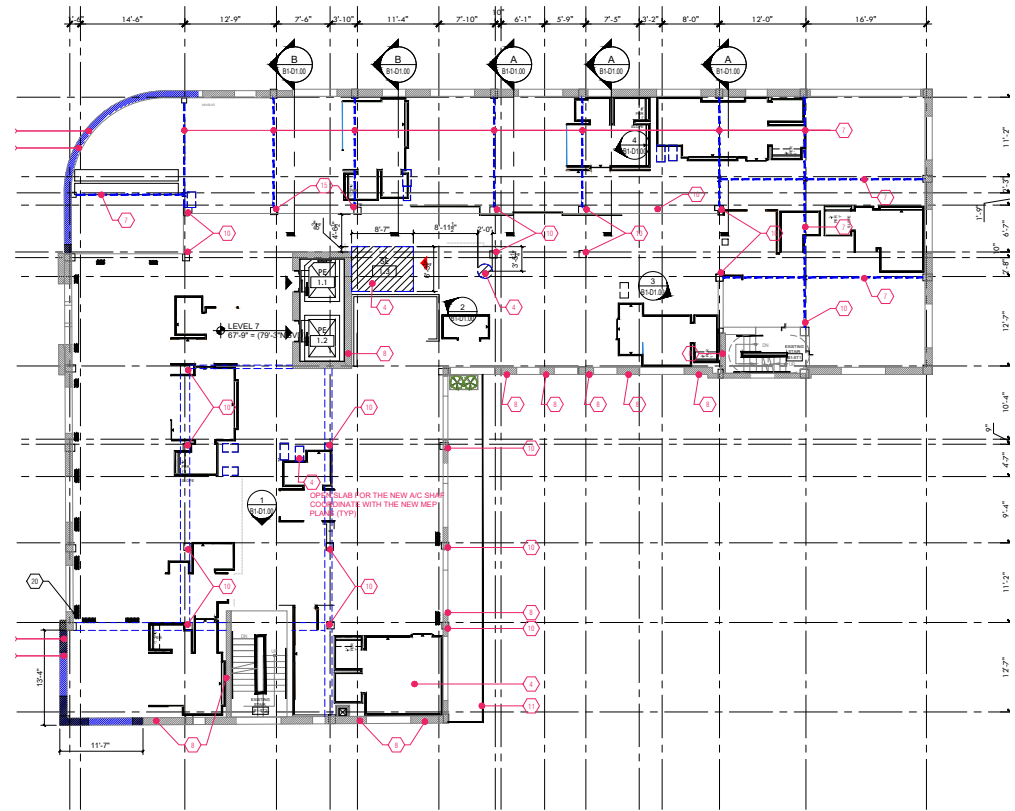
SECOND LEVEL SHORING LAYOUT



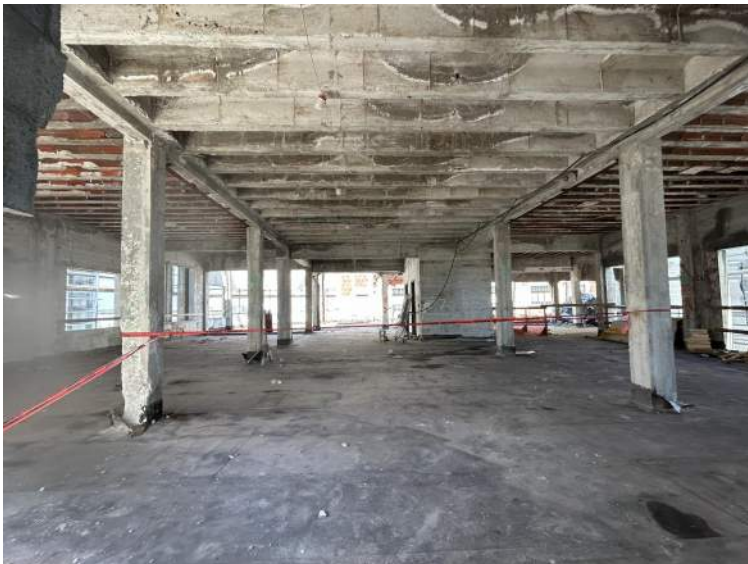
1022 Shoring at L2



# SEVENTH FLOOR



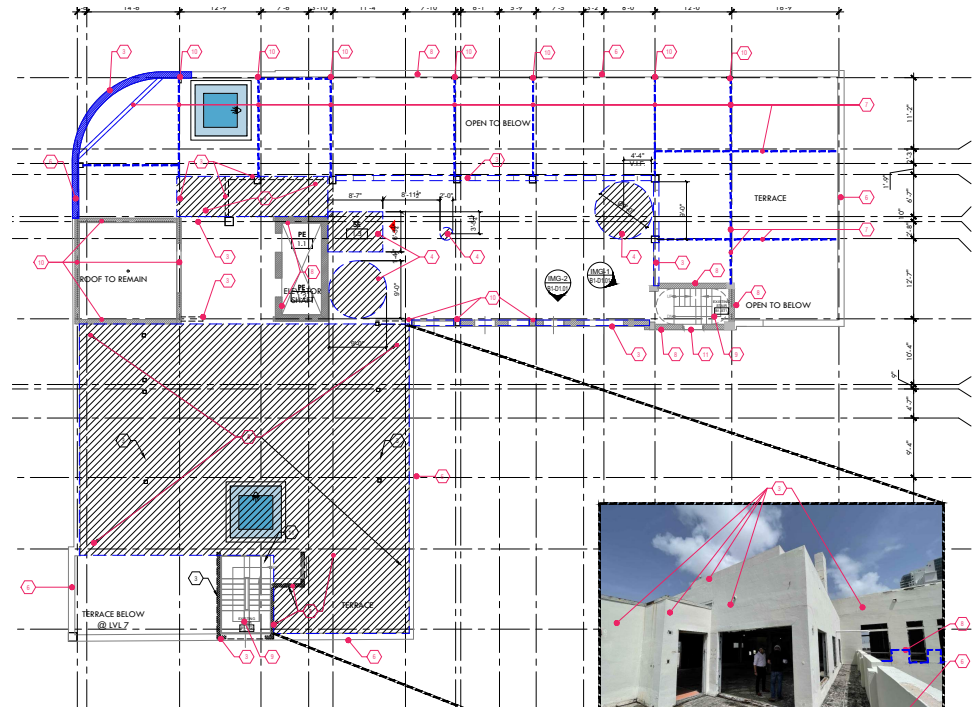
No Shoring or bracing needed on seventh floor



# EIGHTH FLOOR - OVER-BUILD DEMOLITION IN PROGRESS



Looking from the 8th to the 7th floor



No Shoring or bracing needed on eighth floor



View of 8th Floor over-build Demolition



# TERRAZZO DEMO SCHEDULE: Phase 1

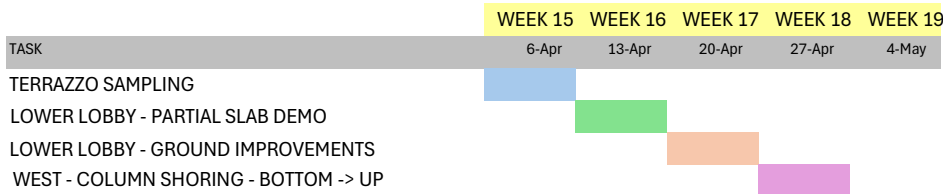
Phase 1 - Partial Demolition of Terrazzo at lower lobby to allow for column shoring in order to temporarily protect the building structure ahead of hurricane season

THE RALEIGH

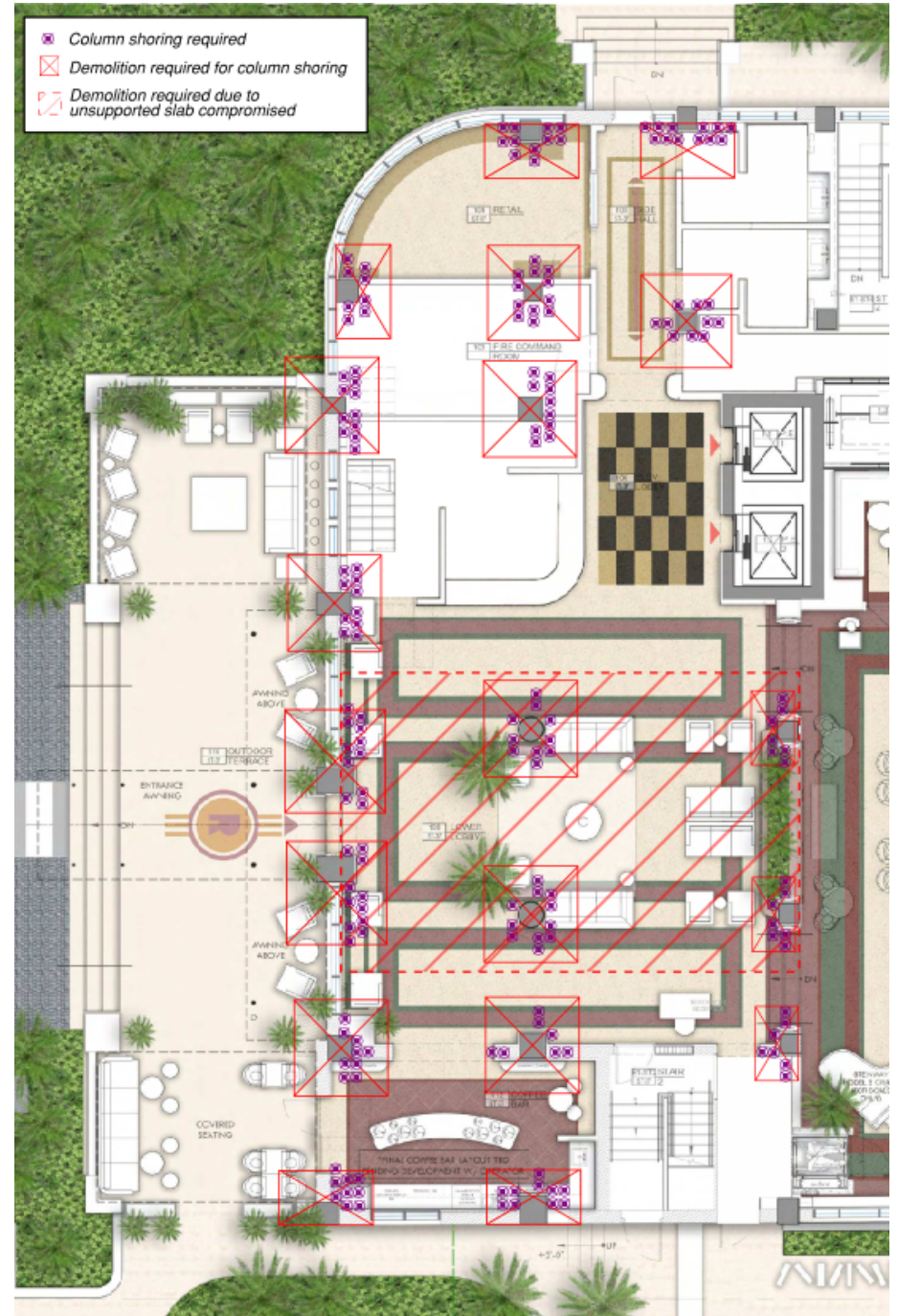
4/14/2026

**BUILDING #1 - SHORING  
INSTALLATION PENDING**

**PHASE I - LOWER LOBBY -  
PARTIAL DEMOLITION**



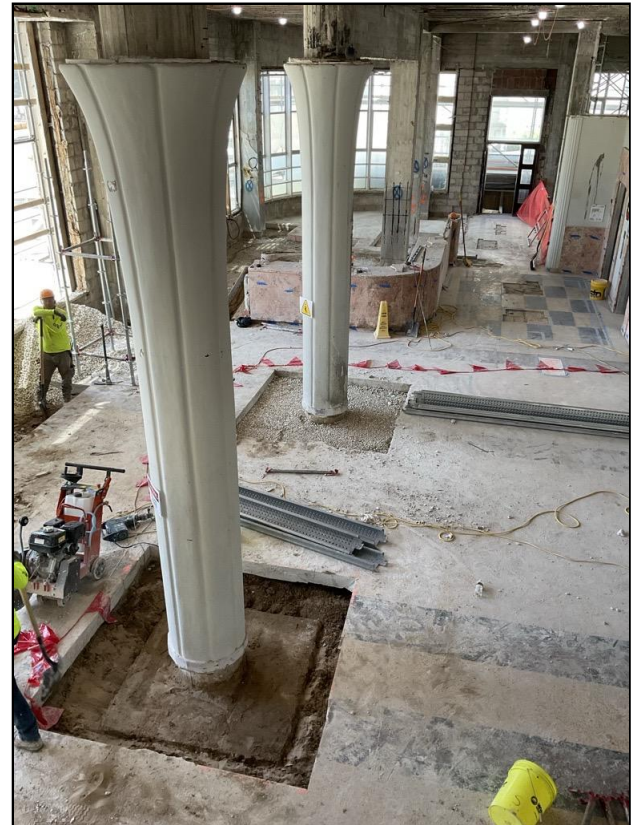
**NOTE: LOWER LOBBY SLAB SHORING PENDING TO COMPLETE UNTIL  
FULL TERRAZZO SLAB REMOVAL IS APPROVED**



## Lower Lobby Column Shoring - Current Progress

*Pictures dated 04/13/2026 taken at the Raleigh job site*

**Partial demolition of the existing slab around the columns is currently ongoing :**



**Shoring posts to support the columns are currently stored at the job site:**



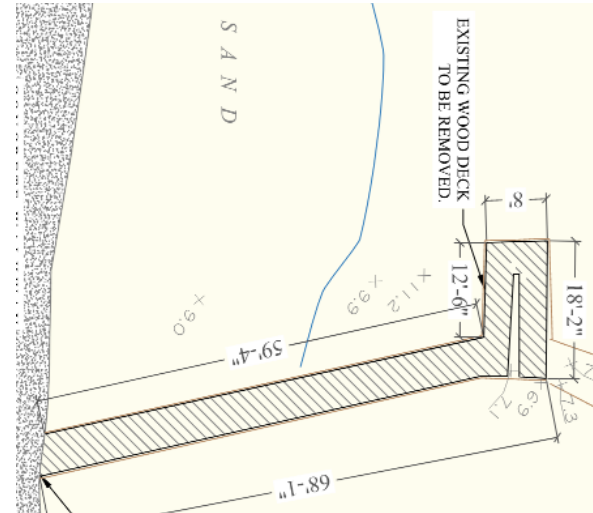
**Column shoring at the lower lobby will be installed by 04/17/2026.**

# DUNE: Crossing Path - Replacement Project

Dune Crossing Location

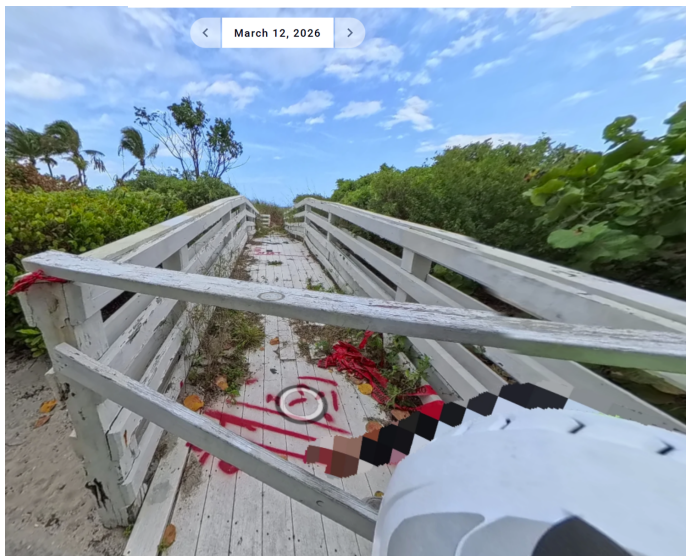


Existing Dune Crossing Orientation



Work commenced on March 23rd, 2026 with anticipated completion April 30th, 2026

Dune Crossing Existing Condition Prior to Start of Work



New Dune Crossing Orientation with Ipe Decking

