

PLANS FOR PROPOSED
IMPROVEMENTS TO
VENETIAN CAUSEWAY

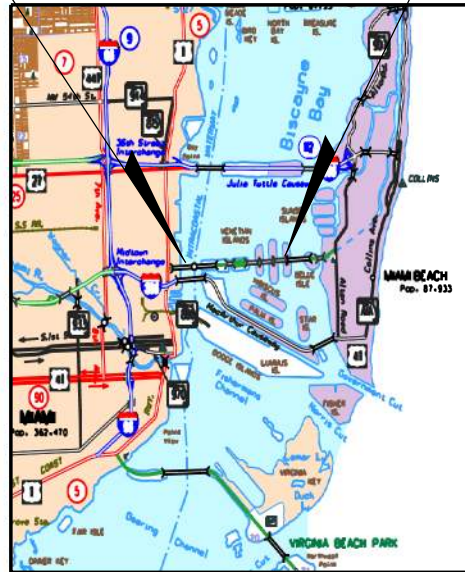
MIAMI-DADE COUNTY PROJECT NO. 20210011
FINANCIAL PROJECT ID 422713-5-58-01
ROAD IMPACT FEE [RIF]
(FEDERAL FUNDS)

INDEX OF DREDGE & FILL SKETCHES

SHEET NO.	SHEET DESCRIPTION
1	KEY SHEET
2	PROJECT LAYOUT
3	DREDGE AND FILL QUANTITIES
4	BRIDGES 2 & 3 QUANTITIES
5	BRIDGES 4 & 5 QUANTITIES
6	BRIDGES 6 & 7 QUANTITIES
7	BRIDGES 8 & 9 QUANTITIES
8	BRIDGE 10 QUANTITIES
9	BASCULE SPAN DREDGE AND FILL QUANTITIES
10	BRIDGES 11 & 12 QUANTITIES
11	TEMPORARY BRIDGE 13 QUANTITIES
12-35	PLANS

BEGIN PROJECT
STA 152+61.91

END PROJECT
STA 244+94.98



PREPARED FOR



MIAMI-DADE COUNTY
DEPARTMENT OF TRANSPORTATION AND PUBLIC WORKS
HIGHWAY DIVISION

STEPHEN P. CLARK CENTER
111 NW 1 ST
MIAMI, FLORIDA 33128

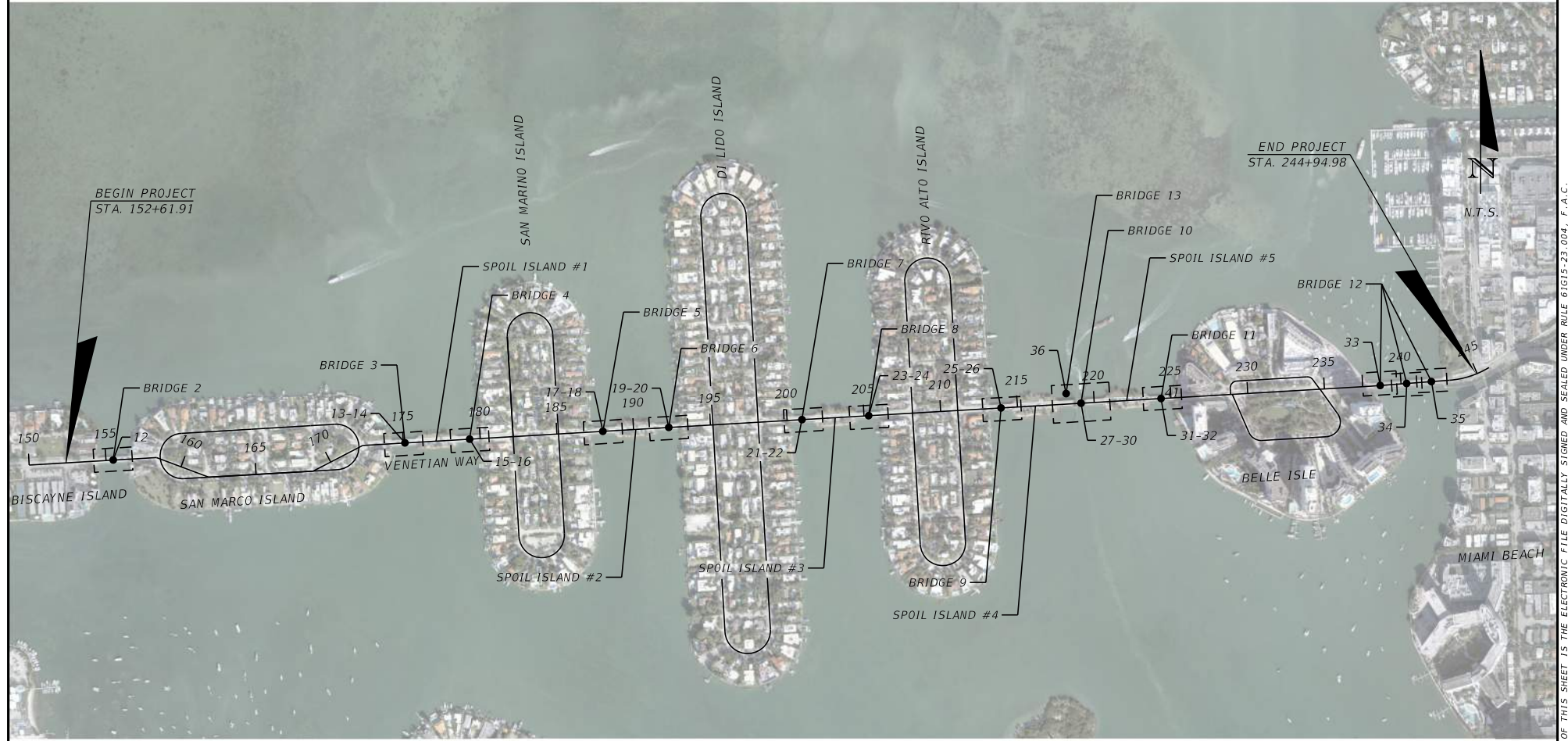
BY



EAC CONSULTING, INC.
5959 WATERFORD DISTRICT DRIVE, SUITE 410
MIAMI, FL 33126
CA#7011

ENGINEER OF RECORD:

ENRIQUE CROOKS, P.E.
FLORIDA REGISTRATION P.E. No. 42528



--- PLAN SHEET OUTLINE
 ●-XX PLAN SHEET NUMBER

REVISIONS					
DATE	BY	DESCRIPTION	DATE	BY	DESCRIPTION

EAC
 EAC Consulting, Inc.
 EAC CONSULTING, INC.
 5858 WATERFORD DISTRICT
 DRIVE, SUITE 410
 MIAMI, FL 33126
 PH: 305-263-5400
 CA # 7011

DESIGNED BY	NAME	DATE	DESIGN IN CHARGE	NAME	DATE

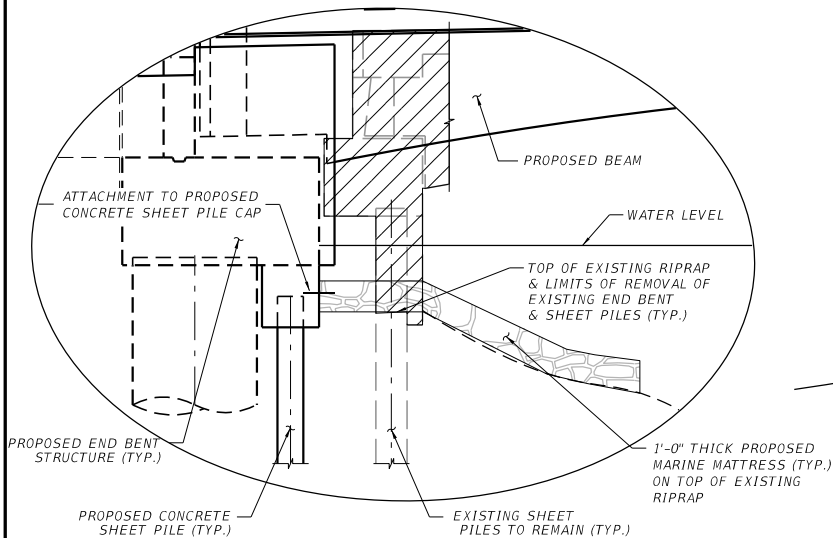
MIAMI DADE COUNTY
 DEPARTMENT OF TRANSPORTATION AND PUBLIC WORKS
 HIGHWAY DIVISION
 SUPERVISOR: F. CLARE COVER
 1100 N.W. 11th St.
 MIAMI, FLORIDA 33138

PROJECT LAYOUT

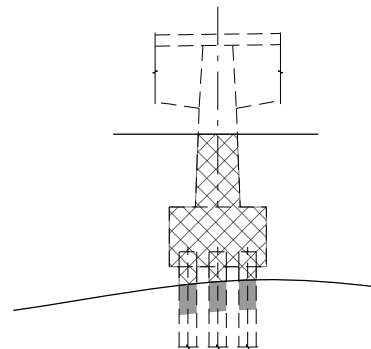
THE OFFICIAL RECORD OF THIS SHEET IS THE ELECTRONIC FILE DIGITALLY SIGNED AND SEALED UNDER RULE 61G15-23.004, F.A.C.

SUMMARY

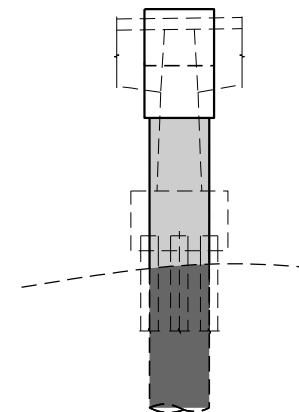
	FILL AREA(SF)	FILL VOL (CY)	DREDGE & FILL (SF)	DREDGE & FILL (CY)	DREDGE AREA(SF)	DREDGE VOL (CY)
BRIDGE 2	3246.7	172.3	235.6	390.9	440.0	103.3
BRIDGE 3	2364.6	211.3	157.1	260.6	443.1	108.0
BRIDGE 4	2363.8	154.0	157.1	260.6	246.2	63.8
BRIDGE 5	2364.6	152.6	157.1	260.6	269.8	66.7
BRIDGE 6	2363.8	156.9	157.1	260.6	246.2	69.5
BRIDGE 7	2364.6	153.9	157.1	260.6	246.2	51.3
BRIDGE 8	2363.8	157.2	157.1	260.6	293.3	95.5
BRIDGE 9	2364.6	153.5	157.1	260.6	199.1	27.9
BRIDGE 10	11496.2	6722.1				4362
BRIDGE 11	2363.8	164.8	157.1	260.6	199.1	31.9
BRIDGE 12	3046.4	314.2	628.3	1042.4	1086.6	319.9
BRIDGE 13	163.4	25.0	176.7	200.4	12.6	35.1



MARINE MATTRESS DETAILS



SECTION THRU EXISTING PIER



SECTION THRU PROPOSED PIER

LEGEND:

- FILL
- DREDGE
- DREDGE AND FILL
- MARINE MATTRESS

REVISIONS					
DATE	BY	DESCRIPTION	DATE	BY	DESCRIPTION

EAC
 EAC Consulting, Inc.
 5699 BLUE LAGOON DRIVE
 SUITE #10, MIAMI, FL 33126
 PH: 305.326.5400
 CA# 7011

DESIGNED BY	NAME	DATE	CHECKED BY	NAME	DATE
	K.T.L.	12/24		EP	12/24
	CL	12/24		RA	12/24

SUPERSEDED BY: K. T. LIN, P.E.

MIAMI-DADE COUNTY
 DEPARTMENT OF TRANSPORTATION AND PUBLIC WORKS
 HIGHWAY BRIDGE ENGINEERING DIVISION
 OVERTOWN TRANSIT MALLAGE
 701 NW 157 ST MIAMI, FL 33138

DREDGE & FILL QUANTITIES

BRIDGE 2						
STATION	FILL AREA (SF)	FILL VOL (CY)	DREDGE & FILL (SF)	DREDGE & FILL (CY)	DREDGE AREA (SF)	DREDGE VOL (CY)
154+39.86	1547.9	64.2				
154+93.44	50.3	13.4	78.5	130.3	123.1	25.2
155+47.19	50.3	14.3	78.5	130.3	146.7	37.8
156+00.94	50.3	15.3	78.5	130.3	170.2	40.3
156+54.52	1547.9	65.1				
TOTAL	3246.7	172.3	235.6	390.9	440.0	103.3

BRIDGE 3						
STATION	FILL AREA (SF)	FILL VOL (CY)	DREDGE & FILL (SF)	DREDGE & FILL (CY)	DREDGE AREA (SF)	DREDGE VOL (CY)
174+07.92	1284.4	90.9				
174+65.51	50.3	19.0	78.5	130.3	296.4	61.3
175+25.01	50.3	20.9	78.5	130.3	146.7	46.7
175+82.59	979.6	80.5				
TOTAL	2364.6	211.3	157.1	260.6	443.1	108.0

REVISIONS							
DATE	BY	DESCRIPTION	DATE	BY	DESCRIPTION	DATE	BY



DESIGNED BY	NAME	DATE	CHECKED BY	NAME	DATE
	K.T.L.	12/24		EP	12/24
	RA	12/24		RA	12/24



BRIDGES 2 & 3
QUANTITIES

BRIDGE 4						
STATION	FILL AREA (SF)	FILL VOL (CY)	DREDGE & FILL (SF)	DREDGE & FILL (CY)	DREDGE AREA (SF)	DREDGE VOL (CY)
178+44.34	979.6	54.5				
179+01.92	50.3	18.1	78.5	130.3	123.1	34.4
179+61.42	50.3	15.3	78.5	130.3	123.1	29.4
180+19.01	1283.6	66.1				
TOTAL	2363.8	154.0	157.1	260.6	246.2	63.8

BRIDGE 5						
STATION	FILL AREA (SF)	FILL VOL (CY)	DREDGE & FILL (SF)	DREDGE & FILL (CY)	DREDGE AREA (SF)	DREDGE VOL (CY)
187+12.11	1284.4	65.9				
187+69.70	50.3	15.3	78.5	130.3	146.7	33.8
188+29.20	50.3	17.1	78.5	130.3	123.1	32.9
188+86.78	979.6	54.3				
TOTAL	2364.6	152.6	157.1	260.6	269.8	66.7

R E V I S I O N S							
DATE	BY	DESCRIPTION	DATE	BY	DESCRIPTION	DATE	BY



EAC CONSULTING, INC.
5699 BLUE LAGOON DRIVE
SUITE #10, MIAMI, FL 33126
PH: 305.326.5400
CA# 7011

DESIGNED BY	NAME	DATE	DRAWN BY	NAME	DATE
	KTL	12/24		EP	12/24
CHECKED BY	NAME	DATE	CHECKED BY	NAME	DATE
	RA	12/24		RA	12/24
SUPERSEDED BY	NAME	DATE	SUPERSEDED BY	NAME	DATE
	K. T. LIN, P.E.				



DEPARTMENT OF TRANSPORTATION
AND PUBLIC WORKS
HIGHWAY BRIDGE ENGINEERING DIVISION
OVERTOWN TRANSIT VILLAGE
701 NW 1ST ST, MIAMI, FL 33138

BRIDGES 4 & 5
QUANTITIES

BRIDGE 6						
STATION	FILL AREA (SF)	FILL VOL (CY)	DREDGE & FILL (SF)	DREDGE & FILL (CY)	DREDGE AREA (SF)	DREDGE VOL (CY)
191+41.70	979.6	52.8				
191+99.29	50.3	18.1	78.5	130.3	146.7	46.7
192+58.79	50.3	19.0	78.5	130.3	99.6	22.8
193+16.37	1283.6	67				
TOTAL	2363.8	156.9	157.1	260.6	246.2	69.5

BRIDGE 7						
STATION	FILL AREA (SF)	FILL VOL (CY)	DREDGE & FILL (SF)	DREDGE & FILL (CY)	DREDGE AREA (SF)	DREDGE VOL (CY)
200+09.18	1284.4	67.9				
200+66.76	50.3	15.3	78.5	130.3	123.1	24.4
201+26.00	50.3	17.1	78.5	130.3	123.1	26.9
201+83.84	979.6	53.6				
TOTAL	2364.6	153.9	157.1	260.6	246.2	51.3

REVISIONS					
DATE	BY	DESCRIPTION	DATE	BY	DESCRIPTION



DESIGNED BY	NAME	DATE	CHECKED BY	NAME	DATE
	KFL	12/24		EP	12/24
	CL	12/24		HA	12/24



DEPARTMENT OF TRANSPORTATION AND PUBLIC WORKS
HIGHWAY BRIDGE ENGINEERING DIVISION
OVERTOWN TRANSIT ALLIANCE
701 NW 1ST ST MIAMI, FL 33138

BRIDGES 6 & 7
QUANTITIES

BRIDGE 8						
STATION	FILL AREA(SF)	FILL VOL.(CY)	DREDGE & FILL (SF)	DREDGE & FILL (CY)	DREDGE AREA(SF)	DREDGE VOL.(CY)
204+43.01	979.6	52.9				
205+00.59	50.3	22.7	78.5	130.3	146.7	54.2
205+60.09	50.3	16.2	78.5	130.3	146.7	41.3
206+17.68	1283.6	65.4				
TOTAL	2363.8	157.2	157.1	260.6	293.3	95.5

BRIDGE 9						
STATION	FILL AREA(SF)	FILL VOL.(CY)	DREDGE & FILL (SF)	DREDGE & FILL (CY)	DREDGE AREA(SF)	DREDGE VOL.(CY)
213+11.51	1284.4	77.3				
213+66.09	50.3	7.8	78.5	130.3	99.6	12.9
214+19.59	50.3	16.2	78.5	130.3	99.6	15.0
214+74.42	979.6	52.2				
TOTAL	2364.6	153.5	157.1	260.6	199.1	27.9

REVISIONS					
DATE	BY	DESCRIPTION	DATE	BY	DESCRIPTION



DESIGNED BY	NAME	DATE	DRAWN BY	NAME	DATE
	K.T.L.	12/24		EP	12/24
CHECKED BY	NAME	DATE	APPROVED BY	NAME	DATE
	CL	12/24		RA	12/24
SUPERSEDED BY: K. T. LIN, P.E.					



BRIDGES 8 & 9
QUANTITIES

BRIDGE 10						
STATION/ELEMENT	FILL AREA(SF)	FILL VOL (CY)	DREDGE & FILL (SF)	DREDGE & FILL (CY)	DREDGE AREA(SF)	DREDGE VOL (CY)
217+57.32	1006	60.6				
Bascule Pier 2 Drilled S		489				489
w Bascule Pier 2 Cofferd	3848	2,594				1,283
Bascule Pier 3 Drilled S		489				489
w Bascule Pier 3 Cofferd	3552	2,394				1,184
New Submarine Cable	1600	593				593
Existing Bascule Piers	483	36				322
Existing Bascule Pier Pile	1	4				4
220+71.98	1006.1	63.6				
TOTAL	11,496.2	6,722.1				4,362

R E V I S I O N S					
DATE	BY	DESCRIPTION	DATE	BY	DESCRIPTION



EAC CONSULTING, INC.
5699 BLUE LAGOON DRIVE
SUITE 410, MIAMI, FL 33126
PH: 305-555-5400
CA # 7011

DESIGNED BY	NAME	DATE	DRAWN BY	NAME	DATE
	K.T.L.	12/24		EP	12/24
CHECKED BY	NAME	DATE	CHECKED BY	NAME	DATE
	RA	12/24		RA	12/24
SUPERSEDED BY	NAME	DATE	SUPERSEDED BY	NAME	DATE
	K. T. LIN, P.E.				



DEPARTMENT OF TRANSPORTATION
AND PUBLIC WORKS
HIGHWAY BRIDGE ENGINEERING DIVISION
OVERTOWN TRANSIT MALLAGE
701 NW 1ST ST MIAMI, FL 33138

BRIDGE 10 - WEST & EAST APPROACH
SPANS QUANTITIES

BASCULE SPAN DREDGE AND FILL QUANTITIES

Element	Qty	DREDGE					FILL					
		Depth	Width	Length	Volume		Depth	Width	Length	Area	Volume	
		(FT)	(FT)	(FT)	(CF)	(CY)	(FT)	(FT)	(FT)	(SF)	(CF)	(CY)
New Bascule Pier 2 Drilled Shafts	15	n/a	n/a	70.00	13,195	489	n/a	n/a	70.00	n/a	13,195	489
New Bascule Pier 2 Cofferdam	1	9.00	37.00	104.00	34,632	1283	18.20	37.00	104.00	3,848	70,034	2594
New Bascule Pier 3 Drilled Shafts	15	n/a	n/a	70.00	13,195	489	n/a	n/a	70.00	n/a	13,195	489
New Bascule Pier 3 Cofferdam	1	9.00	37.00	96.00	31,968	1184	18.20	37.00	96.00	3,552	64,646	2394
New Submarine Cable	1	10.00	10.00	160.00	16,000	593	10.00	10.00	160.00	1,600	16,000	593
Existing Bascule Piers	4	18.00	11.60	10.40	8,686	322	2.00	11.60	10.40	483	965	36
Existing Bascule Pier Piles	52	80.00	1.17	1.17	109	4	80.00	1.17	1.17	1	109	4
TOTALS					117,784	4,362				9,484	178,143	6,598

MIAMI-DADE COUNTY DEPARTMENT OF TRANSPORTATION AND PUBLIC WORKS HIGHWAY BRIDGE ENGINEERING DIVISION			
HARDESTY & HANOVER, LLC CONSULTING ENGINEERS FORT LAUDERDALE, FLORIDA			
DATE	MILE POST	COUNTY	STATE
2/07/25	0.00	MIAMI-DADE	FLORIDA
VENETIAN CAUSEWAY BRIDGE 10 OVER BISCAYNE BAY MIAMI, MIAMI-DADE COUNTY, FLORIDA			
BASCULE SPAN DREDGE AND FILL QUANTITIES			SHEET NO. 9 of 35

BRIDGE 11						
STATION	FILL AREA (SF)	FILL VOL (CY)	DREDGE & FILL (SF)	DREDGE & FILL (CY)	DREDGE AREA (SF)	DREDGE VOL (CY)
223+53.67	979.6	50.9				
224+08.26	50.3	18.5	78.5	130.3	99.6	15.7
224+63.76	50.3	19.5	78.5	130.3	99.6	16.2
225+17.34	1283.6	75.9				
TOTAL	2363.8	164.8	157.1	260.6	199.1	31.9

BRIDGE 12						
STATION	FILL AREA (SF)	FILL VOL (CY)	DREDGE & FILL (SF)	DREDGE & FILL (CY)	DREDGE AREA (SF)	DREDGE VOL (CY)
237+98.13	1324	72.8				
238+51.17	50.3	15.3	78.5	130.3	123.1	27.6
239+01.46	50.3	16.2	78.5	130.3	146.7	36.0
239+53.46	50.3	21.8	78.5	130.3	133.7	38.1
240+07.71	50.3	25.5	78.5	130.3	134.1	55.3
240+63.21	50.3	24.6	78.5	130.3	157.7	59.1
241+17.46	50.3	23.6	78.5	130.3	123.1	38.7
241+69.46	50.3	20.9	78.5	130.3	110.5	19.2
242+19.21	50.3	22.7	78.5	130.3	157.7	45.8
242+72.80	1320	70.8				
TOTAL	3046.4	314.2	628.3	1042.4	1086.6	319.9

R E V I S I O N S					
DATE	BY	DESCRIPTION	DATE	BY	DESCRIPTION



EAC CONSULTING, INC.
5699 BLUE LAGOON DRIVE
SUITE #10, MIAMI, FL 33126
PH: 305.555.5400
CA# 7011

DESIGNED BY	NAME	DATE	CHECKED BY	NAME	DATE
	KFL	12/24		EP	12/24
	RA	12/24		RA	12/24

SUPERSED BY: K. T. LIN, P.E.



DEPARTMENT OF TRANSPORTATION
AND PUBLIC WORKS
HIGHWAY BRIDGE ENGINEERING DIVISION
OVERTOWN TRANSIT ALLIANCE
701 NW 151 ST, MIAMI, FL 33138

BRIDGES 11 & 12
QUANTITIES

BRIDGE 13						
STATION	FILL AREA(SF)	FILL VOL(CY)		DREDGE & FILL (CY)	DREDGE AREA(SF)	DREDGE VOL (CY)
603+05.76	37.7	3.4	39.3	42.3		
603+98.26	37.7	6.7	39.3	41.0		
604+90.76	37.7	6.0	39.3	41.7		
METHOD SHAFT	12.6	3.1	19.6	32.6	12.6	35.1
605+83.26	37.7	5.8	39.3	42.8		
TOTAL	163.4	25.0	176.7	200.4	12.6	35.1

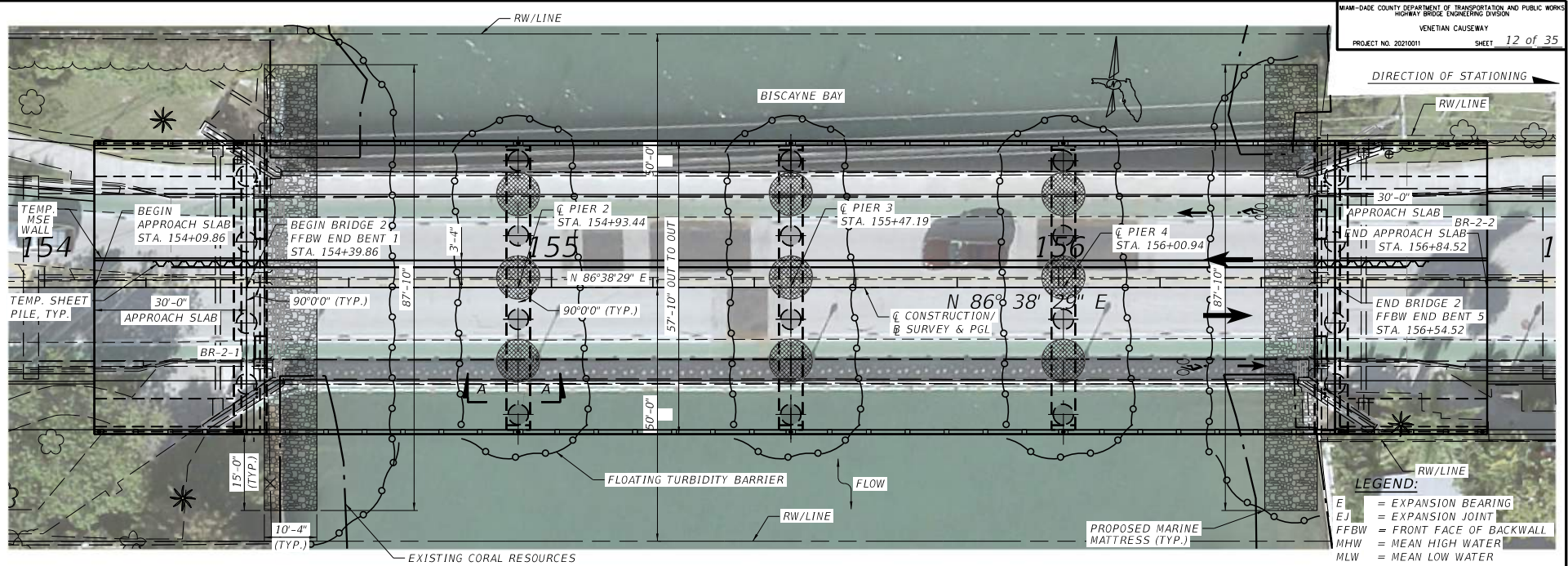
R E V I S I O N S					
DATE	BY	DESCRIPTION	DATE	BY	DESCRIPTION



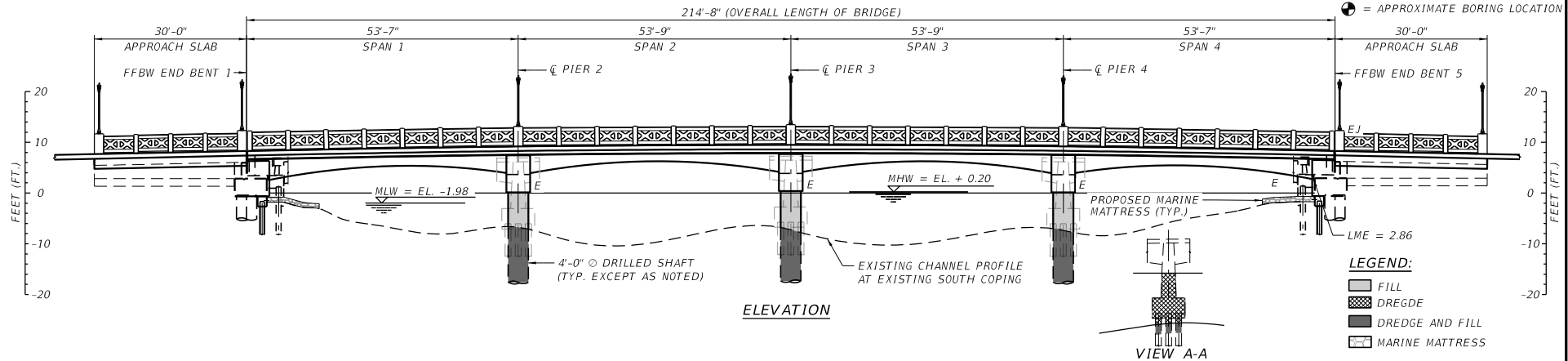
DESIGNED BY	NAME	DATE	CHECKED BY	NAME	DATE
DESIGNED BY	K.T.L.	12/24	CHECKED BY	EP	12/24
CHECKED BY	K.T.L.	12/24	CHECKED BY	HA	12/24
SUPERSEDED BY	K. T. LIN, P.E.				



TEMPORARY BRIDGE 13
QUANTITIES



- LEGEND:**
- E = EXPANSION BEARING
 - EJ = EXPANSION JOINT
 - FFBW = FRONT FACE OF BACKWALL
 - MHW = MEAN HIGH WATER
 - MLW = MEAN LOW WATER
 - SDWK = SIDEWALK
 - SHLDR = SHOULDER
 - LME = LOW MEMBER ELEVATION
 - MVC = MINIMAL VERTICAL CLEARANCE
 - = APPROXIMATE BORING LOCATION



- LEGEND:**
- FILL
 - DREGDE
 - DREDGE AND FILL
 - MARINE MATTRESS

REVISIONS					
DATE	BY	DESCRIPTION	DATE	BY	DESCRIPTION

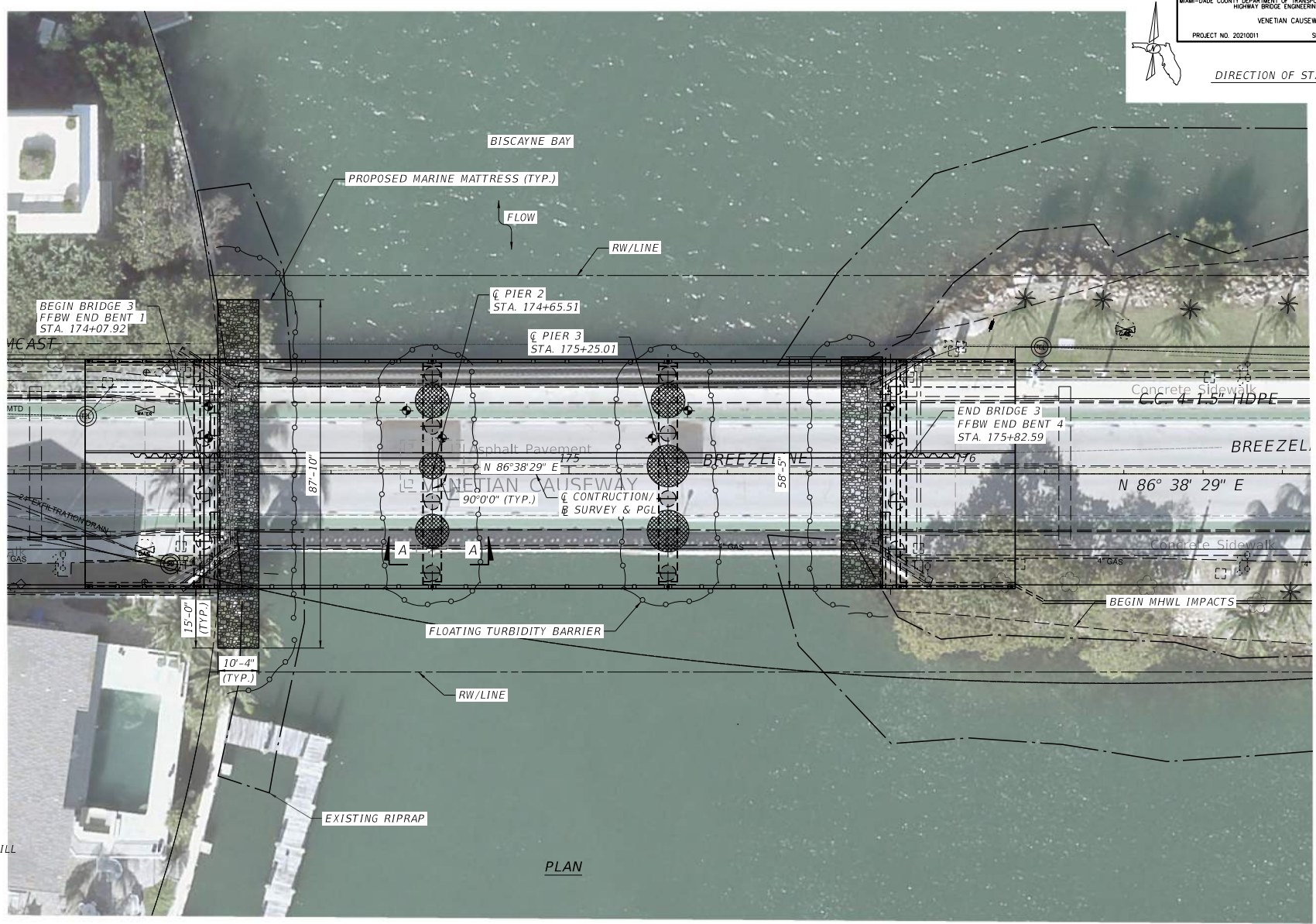
EAC
 EAC Consulting, Inc.
 5699 BLUE LAGOON DRIVE
 SUITE #10, MIAMI, FL 33126
 PH: 305.365.6400
 CA# 7011

DESIGNED BY	NAME	DATE	CHECKED BY	NAME	DATE
	K.T.	12/24		EP	12/24
	RA	12/24		RA	12/24

SUPERVISOR BY: K. T. LIN, P.E.

MIAMI-DADE COUNTY
 DEPARTMENT OF TRANSPORTATION AND PUBLIC WORKS
 HIGHWAY BRIDGE ENGINEERING DIVISION
 770 NW 157th Street, Miami, FL 33138

**BRIDGE 2
 PLAN AND ELEVATION**



- LEGEND:**
- FILL
 - DREDGE
 - DREDGE AND FILL
 - RIPRAP

PLAN

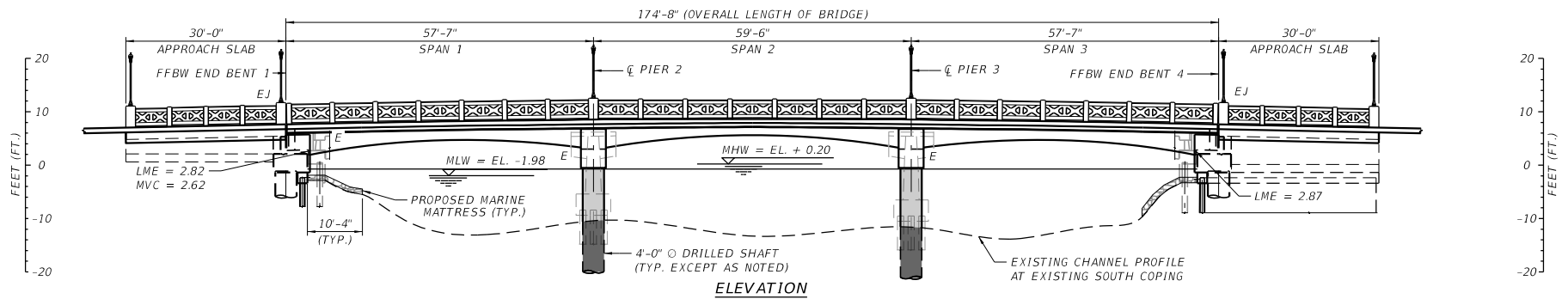
REVISIONS					
DATE	BY	DESCRIPTION	DATE	BY	DESCRIPTION

EAC
EAC Consulting, Inc.
5959 BLUE JACKSON DRIVE
SUITE 410, MIAMI, FL 33126
PH: 305-285-5400
CA# 7011

DESIGNED BY	NAME	DATE	DRAWN BY	NAME	DATE
	KTL	12/24		EP	12/24
CHECKED BY	CL	12/24	CHECKED BY	HA	12/24
SUPERVISED BY: K. T. LIN, P.E.					

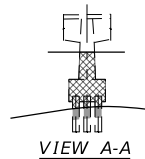
MIAMI-DADE COUNTY
DEPARTMENT OF TRANSPORTATION AND PUBLIC WORKS
HIGHWAY BRIDGE ENGINEERING DIVISION
OVERTOWN TRANSIT VILLAGE
730 NW 137th CT, MIAMI, FL 33138

BRIDGE 3
PLAN



LEGEND:

- FILL
- DREDGE
- DREDGE AND FILL
- RIPRAP



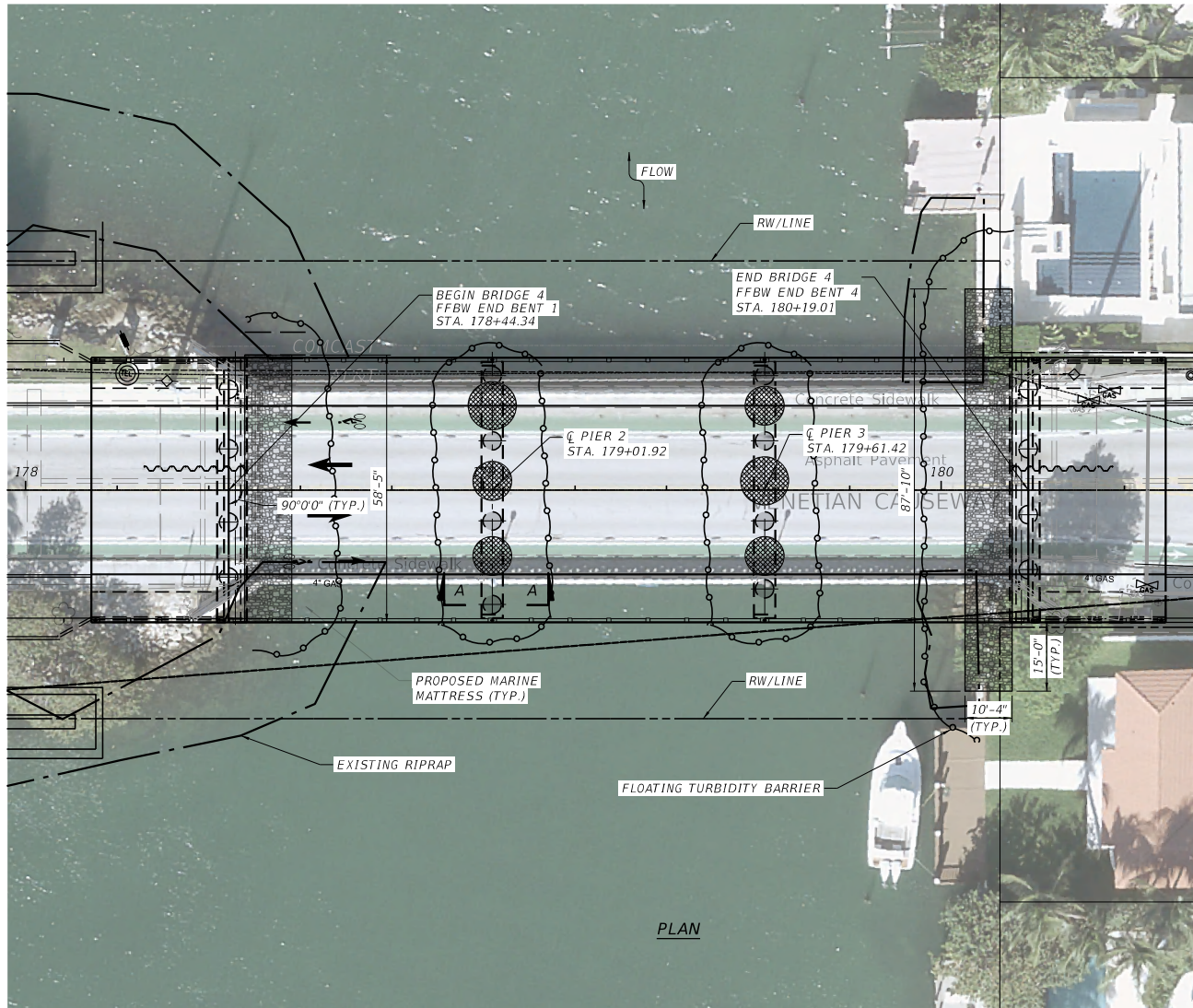
REVISIONS					
DATE	BY	DESCRIPTION	DATE	BY	DESCRIPTION

EAC
 EAC Consulting, Inc.
 5699 BLUE LAGOON DRIVE
 SUITE #10, MIAMI, FL 33126
 PH: 305-555-5400
 CA# 7011

DESIGNED BY	NAME	DATE	DRAWN BY	NAME	DATE
	K.T.L.	12/24		EP	12/24
CHECKED BY	CL	12/24	CHECKED BY	RA	12/24
SUPERVISOR	K. T. LIN, P.E.				

MIAMI-DADE COUNTY
 DEPARTMENT OF TRANSPORTATION AND PUBLIC WORKS
 HIGHWAY BRIDGE ENGINEERING DIVISION
 OVERTOWN TRANSIT MALLAGE
 701 NW 1ST ST, MIAMI, FL 33138

BRIDGE 3
 ELEVATION



PLAN

- LEGEND:**
- - DREDGE
 - DREDGE AND FILL
 - MARINE MATTRESS

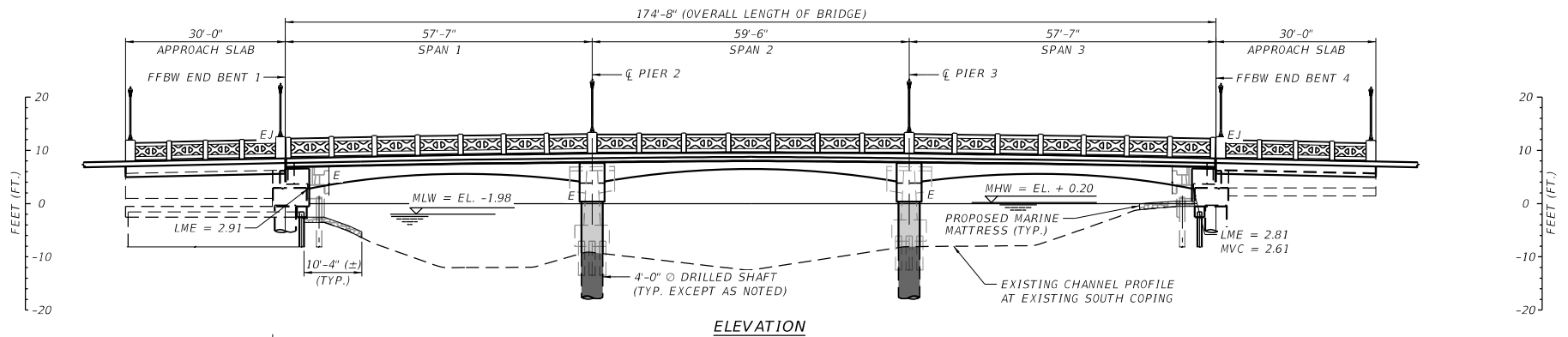
REVISIONS					
DATE	BY	DESCRIPTION	DATE	BY	DESCRIPTION

EAC
 EAC Consulting, Inc.
 5699 BLUE LAGOON DRIVE
 SUITE #10, MIAMI, FL 33126
 PH: 305.526.5400
 CA# 7011

DESIGNED BY	NAME	DATE	DRWN BY	NAME	DATE
	K.T.L.	12/24		EP	12/24
CHECKED BY	CL	12/24	CHECKED BY	HA	12/24
SUPERVISED BY: K. T. LIN, P.E.					

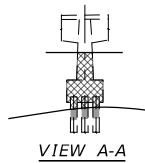
MIAMI-DADE COUNTY
 DEPARTMENT OF TRANSPORTATION AND PUBLIC WORKS
 HIGHWAY BRIDGE ENGINEERING DIVISION
 100 TOWN CENTER SQUARE
 701 NW 1ST ST. MIAMI, FL 33138

BRIDGE 4
 PLAN



LEGEND:

- FILL
- DREDGE
- DREDGE AND FILL
- RIPRAP



R E V I S I O N S					
DATE	BY	DESCRIPTION	DATE	BY	DESCRIPTION

EAC
 EAC Consulting, Inc.
 5659 BLUE LAGOON DRIVE
 SUITE #10, MIAMI, FL 33126
 PH: 305.585.6400
 CA# 7011

DESIGNED BY	NAME	DATE	CHECKED BY	NAME	DATE
	K.T.L.	12/24		EP	12/24
	CL	12/24		RA	12/24

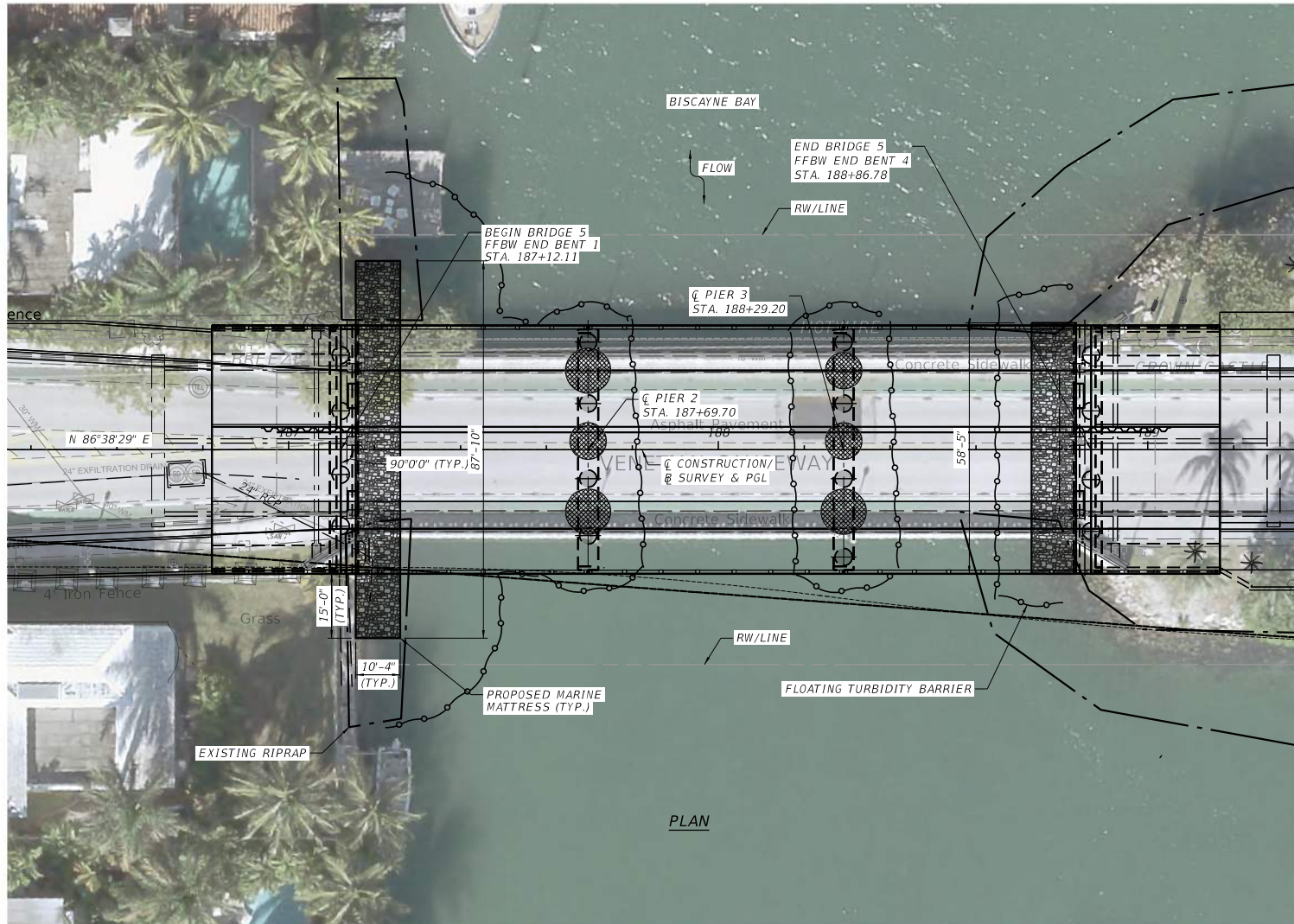
SUPERSEDED BY: K. T. LIN, P.E.

MIAMI-DADE COUNTY
 DEPARTMENT OF TRANSPORTATION AND PUBLIC WORKS
 HIGHWAY BRIDGE ENGINEERING DIVISION
 OVERTOWN TRANSIT MALLAGE
 701 NW 1ST ST MIAMI, FL 33138

**BRIDGE 4
 ELEVATION**



DIRECTION OF STATIONING



PLAN

LEGEND:

- FILL
- DREGDE
- DREGDE AND FILL
- MARINE MATTRESS

REVISIONS					
DATE	BY	DESCRIPTION	DATE	BY	DESCRIPTION

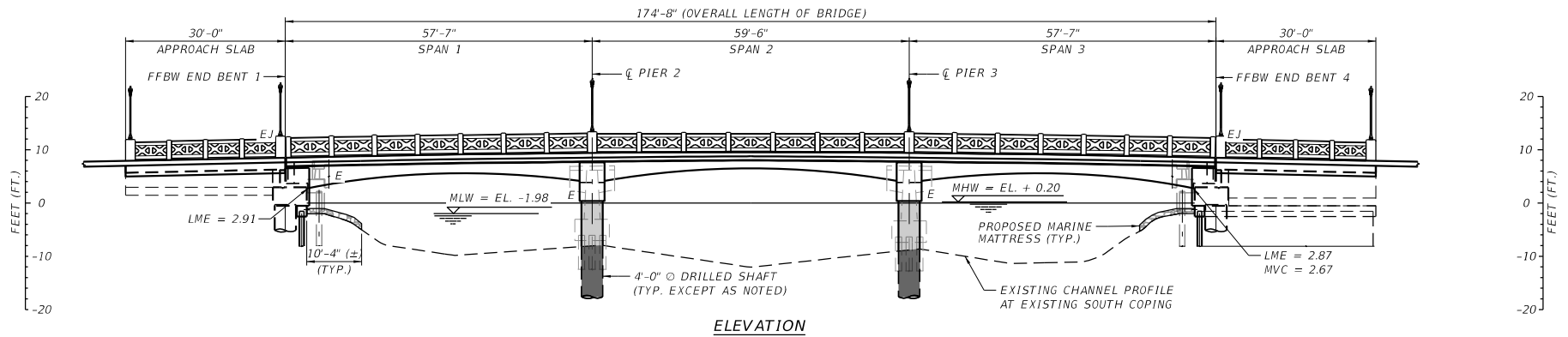
EAC
 EAC Consulting, Inc.
 5699 BLUE LAGOON DRIVE
 SUITE 410, MIAMI, FL 33126
 PH: 305.365.6400
 CA# 7011

DESIGNED BY	NAME	DATE	CHECKED BY	NAME	DATE
	K.T.L.	12/24		EP	12/24
	HA	12/24		HA	12/24

SUPERSEDED BY: K. T. LIN, P.E.

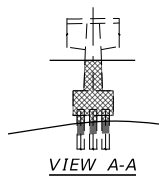
MIAMI-DADE COUNTY
 DEPARTMENT OF TRANSPORTATION AND PUBLIC WORKS
 HIGHWAY BRIDGE ENGINEERING DIVISION
 OVERTOWN TRANSIT VILLAGE
 701 NW 151ST CT, MIAMI, FL 33138

BRIDGE 5
 PLAN



LEGEND:

- FILL
- DREGDE
- DREGDE AND FILL
- RIPRAP



REVISIONS					
DATE	BY	DESCRIPTION	DATE	BY	DESCRIPTION

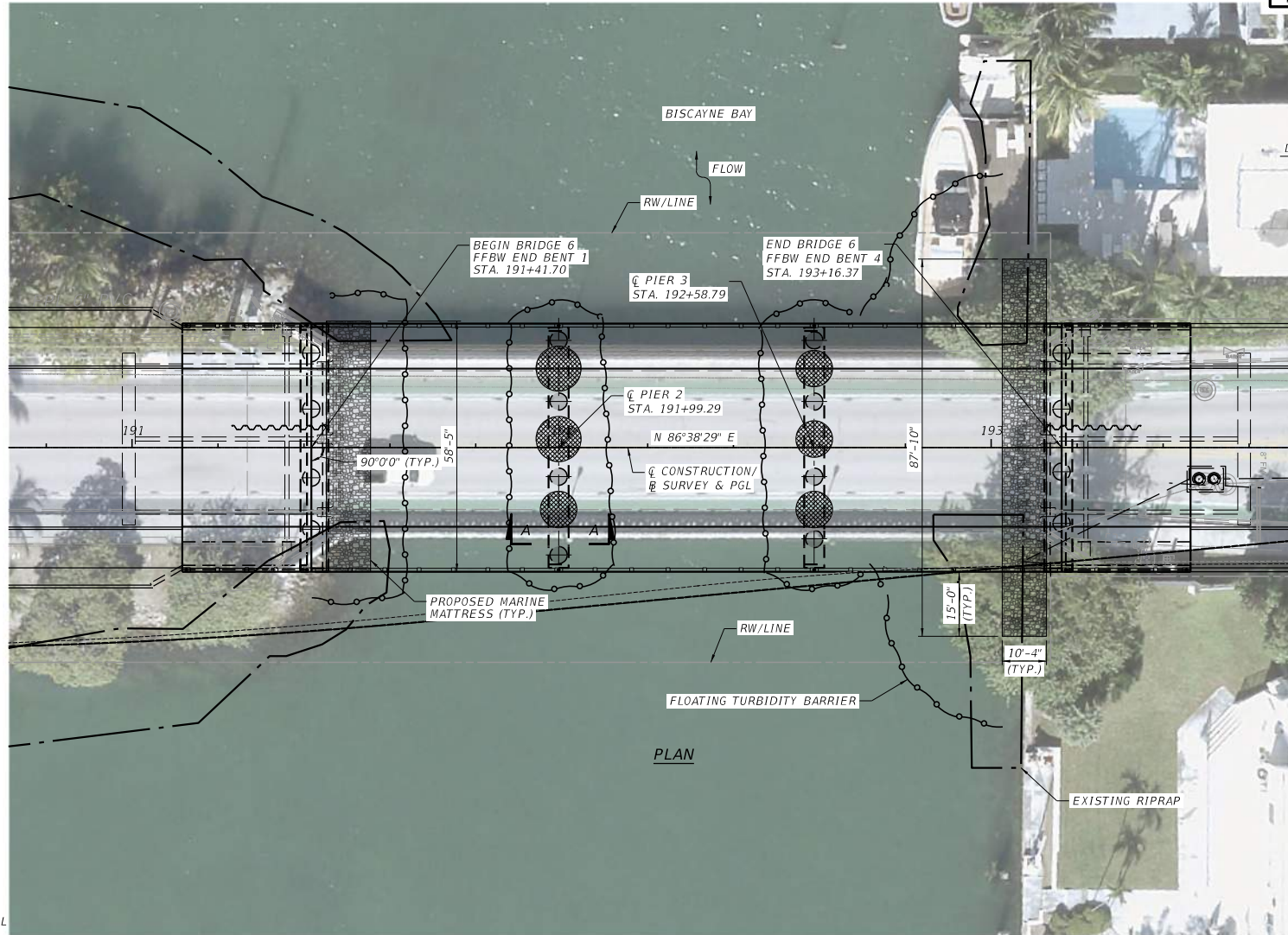
EAC
EAC Consulting, Inc.
5699 BLUE LAGOON DRIVE
SUITE 410, MIAMI, FL 33126
PH: 305.585.5400
CA# 7011

DESIGNED BY	NAME	DATE	CHECKED BY	NAME	DATE
	KTL	12/24		EP	12/24
	HA	12/24		HA	12/24

SUPERSEDED BY: K. T. LIN, P.E.

MIAMI-DADE COUNTY
DEPARTMENT OF TRANSPORTATION AND PUBLIC WORKS
HIGHWAY BRIDGE ENGINEERING DIVISION
OVERTOWN TRANSIT MALLAGE
701 NW 1ST ST MIAMI, FL 33138

BRIDGE 5
ELEVATION



DIRECTION OF STATIONING

- LEGEND:**
- FILL
 - DREDGE
 - DREDGE AND FILL
 - RIPRAP

REVISIONS					
DATE	BY	DESCRIPTION	DATE	BY	DESCRIPTION

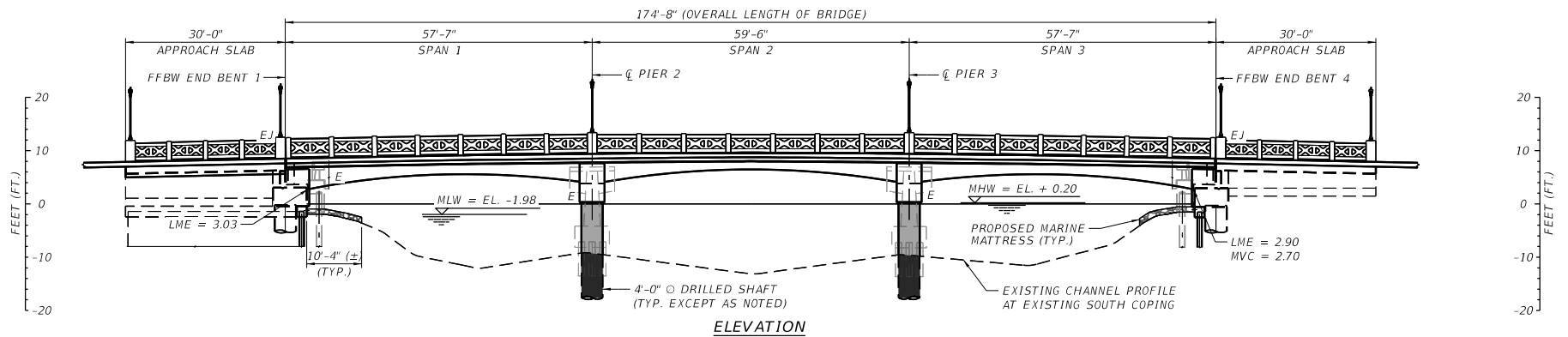
EAC
 EAC Consulting, Inc.
 5699 BLUE LAGOON DRIVE
 SUITE 410, MIAMI, FL 33126
 PH: 305.326.5400
 CA# 7011

DESIGNED BY	NAME	DATE	CHECKED BY	NAME	DATE
	KTL	12/24		EP	12/24
	CL	12/24		HA	12/24

SUPERSEDED BY: K. T. LIN, P.E.

MIAMI-DADE COUNTY
 DEPARTMENT OF TRANSPORTATION AND PUBLIC WORKS
 HIGHWAY BRIDGE ENGINEERING DIVISION
 OVERTOWN TRANSIT VILLAGE
 701 NW 151ST CT, MIAMI, FL 33138

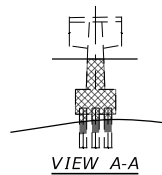
BRIDGE 6
 PLAN



ELEVATION

LEGEND:

-  FILL
-  DREDGE
-  DREDGE AND FILL
-  RIPRAP



REVISIONS					
DATE	BY	DESCRIPTION	DATE	BY	DESCRIPTION

EAC
EAC Consulting, Inc.
5699 BLUE LAGOON DRIVE
SUITE #10, MIAMI, FL 33126
PH: 305.326.5400
CA# 7011

DESIGNED BY	NAME	DATE	CHECKED BY	NAME	DATE
	K.T.L.	12/24		EP	12/24
	CL	12/24		RA	12/24

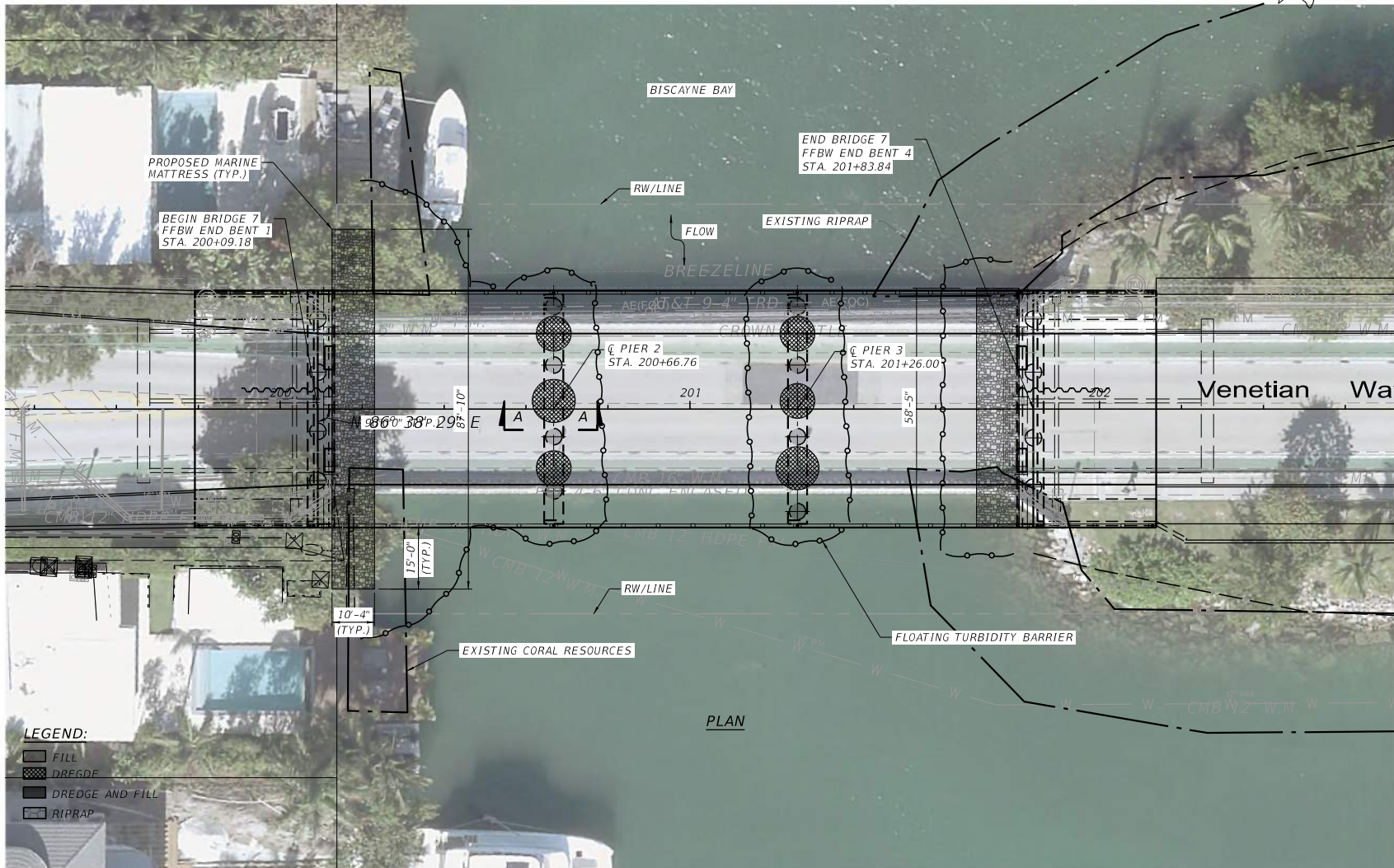
SUPERSEDED BY: K.T.L./LW, P.E.

MIAMI-DADE COUNTY
DEPARTMENT OF TRANSPORTATION AND PUBLIC WORKS
HIGHWAY BRIDGE ENGINEERING DIVISION
OVERTOWN TRANSIT VILLAGE
701 NW 1ST ST MIAMI, FL 33136

BRIDGE 6
ELEVATION



DIRECTION OF STATIONING



PLAN

LEGEND:

- FILL
- DREDGE
- DREDGE AND FILL
- RIPRAP

REVISIONS					
DATE	BY	DESCRIPTION	DATE	BY	DESCRIPTION

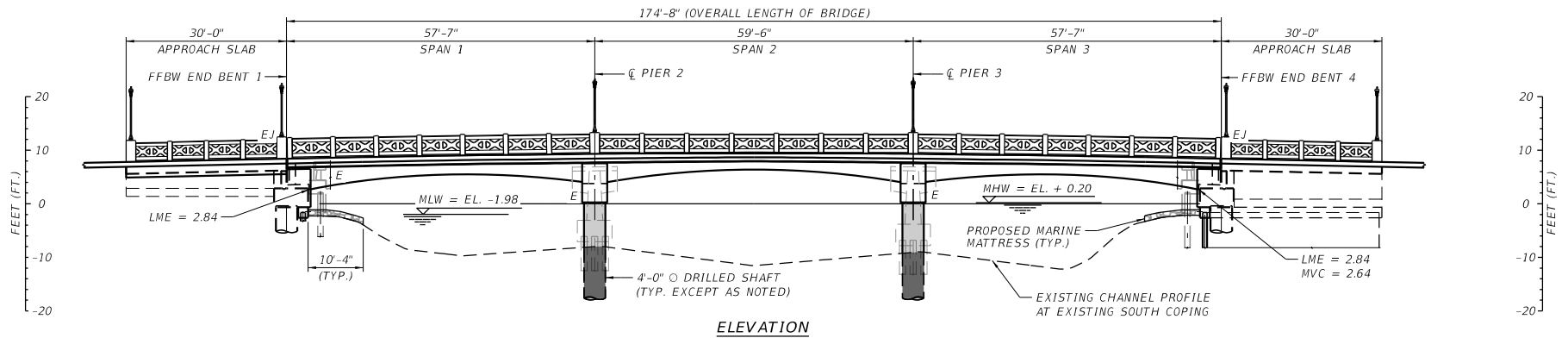
EAC
 EAC Consulting, Inc.
 5699 BLUE LAGOON DRIVE
 SUITE #10, MIAMI, FL 33126
 PH: 305.365.6400
 CA# 7011

DESIGNED BY	NAME	DATE	CHECKED BY	NAME	DATE
	K.T.L.	12/24		EP	12/24
	CL	12/24		HA	12/24

SUPERSED BY: K.T.L.W., P.E.

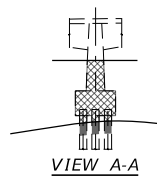
MIAMI-DADE COUNTY
 DEPARTMENT OF TRANSPORTATION AND PUBLIC WORKS
 HIGHWAY BRIDGE ENGINEERING DIVISION
 OVERTOWN TRANSIT VILLAGE
 770 NW 157 ST MIAMI, FL 33138

BRIDGE 7
 PLAN



LEGEND:

- FILL
- DREGDE
- DREGDE AND FILL
- RIPRAP



REVISIONS					
DATE	BY	DESCRIPTION	DATE	BY	DESCRIPTION

EAC
 EAC Consulting, Inc.

EAC CONSULTING, INC.
 5699 BLUE LAGOON DRIVE
 SUITE #10, MIAMI, FL 33126
 PH: 305.326.5400
 CA# 7011

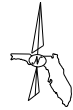
DESIGNED BY	NAME	DATE	CHECKED BY	NAME	DATE
	K.T.L.	12/24		EP	12/24
	CL	12/24		RA	12/24

SUPERSEDED BY: K. T. LIN, P.E.

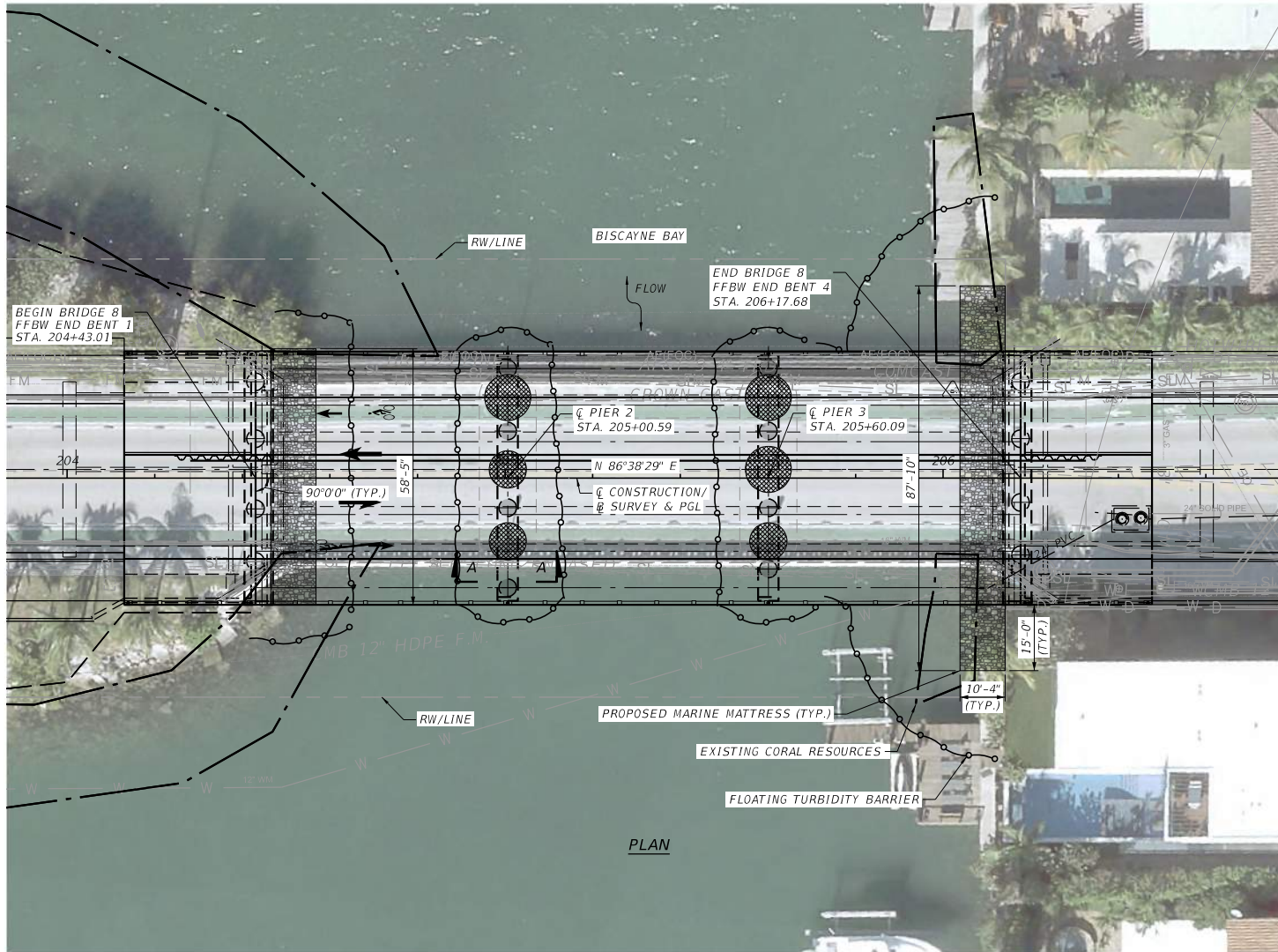
MIAMI-DADE COUNTY

DEPARTMENT OF TRANSPORTATION AND PUBLIC WORKS
 HIGHWAY BRIDGE ENGINEERING DIVISION
 OVERTOWN TRANSIT MALLAGE
 701 NW 1ST ST MIAMI, FL 33136

BRIDGE 7
 ELEVATION



DIRECTION OF STATIONING



LEGEND:

- FILL
- DREGDE
- DREGDE AND FILL
- RIPRAP

PLAN

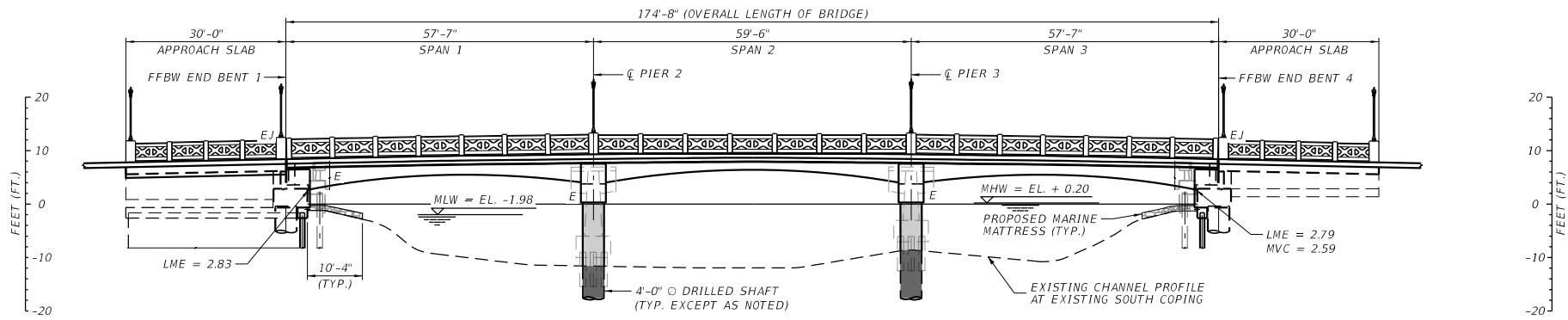
REVISIONS					
DATE	BY	DESCRIPTION	DATE	BY	DESCRIPTION

EAC
 EAC Consulting, Inc.
 5699 BLUE LAGOON DRIVE
 SUITE #10, MIAMI, FL 33126
 PH: 305-326-6400
 CA# 7011

DESIGNED BY	NAME	DATE	DRWN BY	NAME	DATE
	K.T.L.	12/24		EP	12/24
CHECKED BY	CL	12/24	CHECKED BY	HA	12/24
SUPERVISOR BY: K.T. LIN, P.E.					

MIAMI-DADE COUNTY
 DEPARTMENT OF TRANSPORTATION AND PUBLIC WORKS
 HIGHWAY BRIDGE ENGINEERING DIVISION
 OVERTOWN TRANSIT VILLAGE
 701 NW 151ST CT, MIAMI, FL 33138

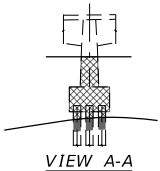
BRIDGE 8
 PLAN



ELEVATION

LEGEND:

- FILL
- DREDGE
- DREDGE AND FILL
- RIPRAP



REVISIONS					
DATE	BY	DESCRIPTION	DATE	BY	DESCRIPTION

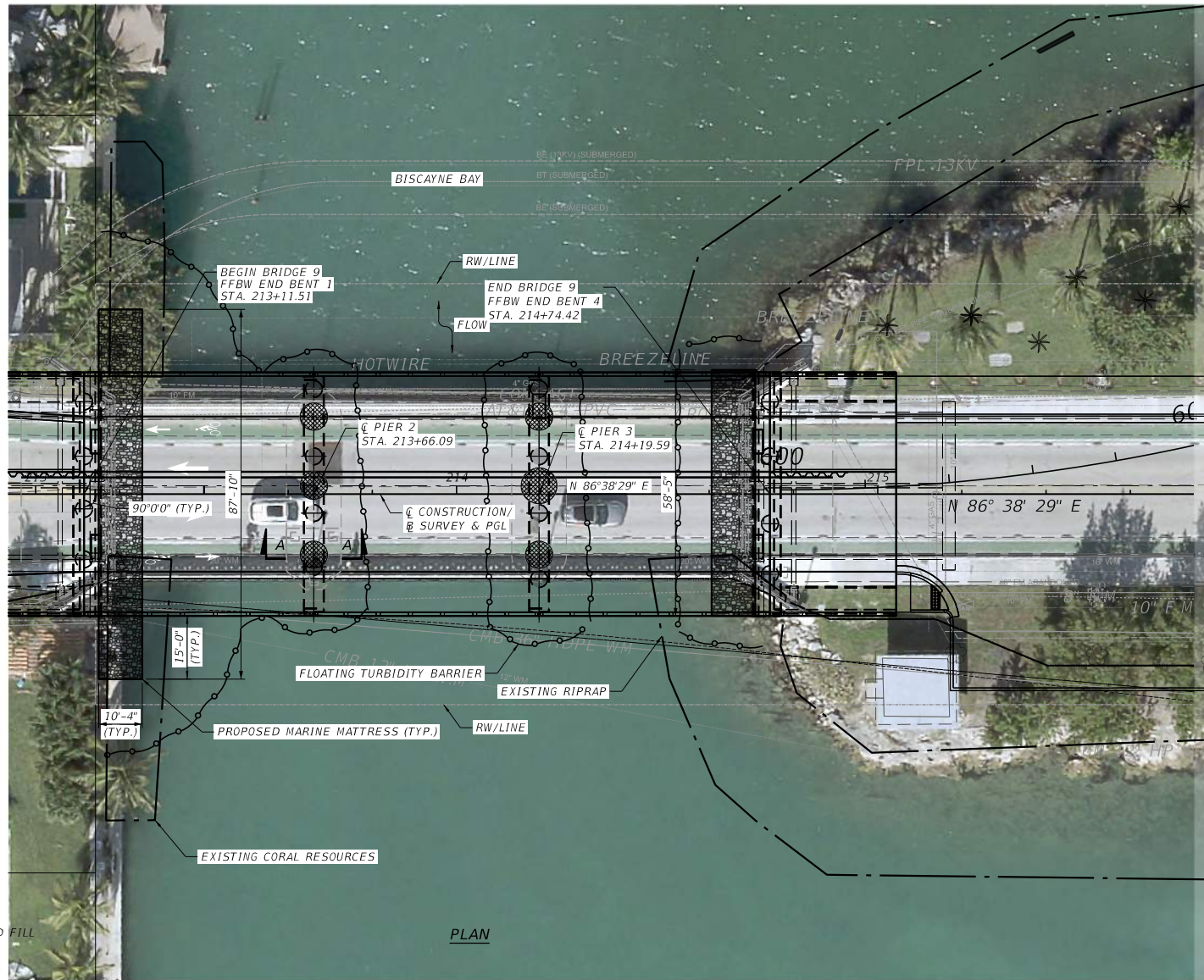
EAC
 EAC Consulting, Inc.
 5699 BLUE LAGOON DRIVE
 SUITE #10, MIAMI, FL 33126
 PH: 305.365.6400
 CA# 7011

DESIGNED BY	NAME	DATE	CHECKED BY	NAME	DATE
	K.T.L.	12/24		EP	12/24
	CL	12/24		RA	12/24

SUPERVISOR BY: K. T. LIN, P.E.

MIAMI-DADE COUNTY
 DEPARTMENT OF TRANSPORTATION AND PUBLIC WORKS
 HIGHWAY BRIDGE ENGINEERING DIVISION
 OVERTOWN TRANSIT MALLAGE
 701 NW 1ST ST MIAMI, FL 33136

BRIDGE 8
 ELEVATION



- LEGEND:**
- FILL
 - DREDGE
 - DREDGE AND FILL
 - RIPRAP

PLAN

REVISIONS					
DATE	BY	DESCRIPTION	DATE	BY	DESCRIPTION

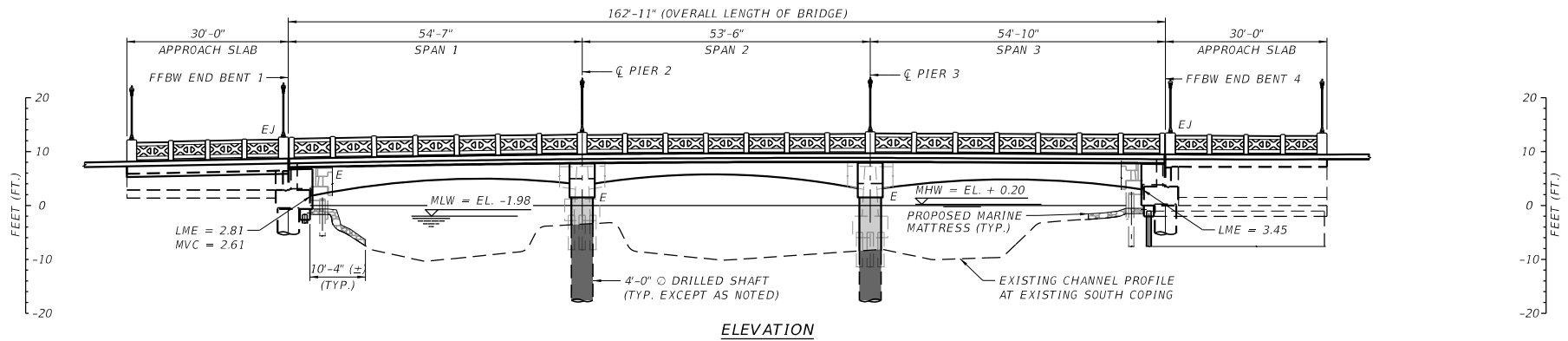
EAC
 EAC Consulting, Inc.
 6699 BLUE LAGOON DRIVE
 SUITE #10, MIAMI, FL 33126
 PH: 305-556-6400
 CA# 7011

DESIGNED BY	NAME	DATE	CHECKED BY	NAME	DATE
	K.T.L.	12/24		EP	12/24
	CL	12/24		HA	12/24

SUPERVISOR BY: K.T.LIN, P.E.

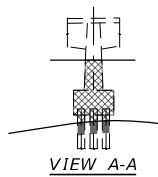
MIAMI-DADE COUNTY
 DEPARTMENT OF TRANSPORTATION AND PUBLIC WORKS
 HIGHWAY BRIDGE ENGINEERING DIVISION
 OVERTOWN TRANSIT VILLAGE
 701 NW 1ST ST, MIAMI, FL 33136

BRIDGE 9
 PLAN



LEGEND:

- FILL
- DREDGE
- DREDGE AND FILL
- RIPRAP



REVISIONS					
DATE	BY	DESCRIPTION	DATE	BY	DESCRIPTION

EAC
 EAC Consulting, Inc.

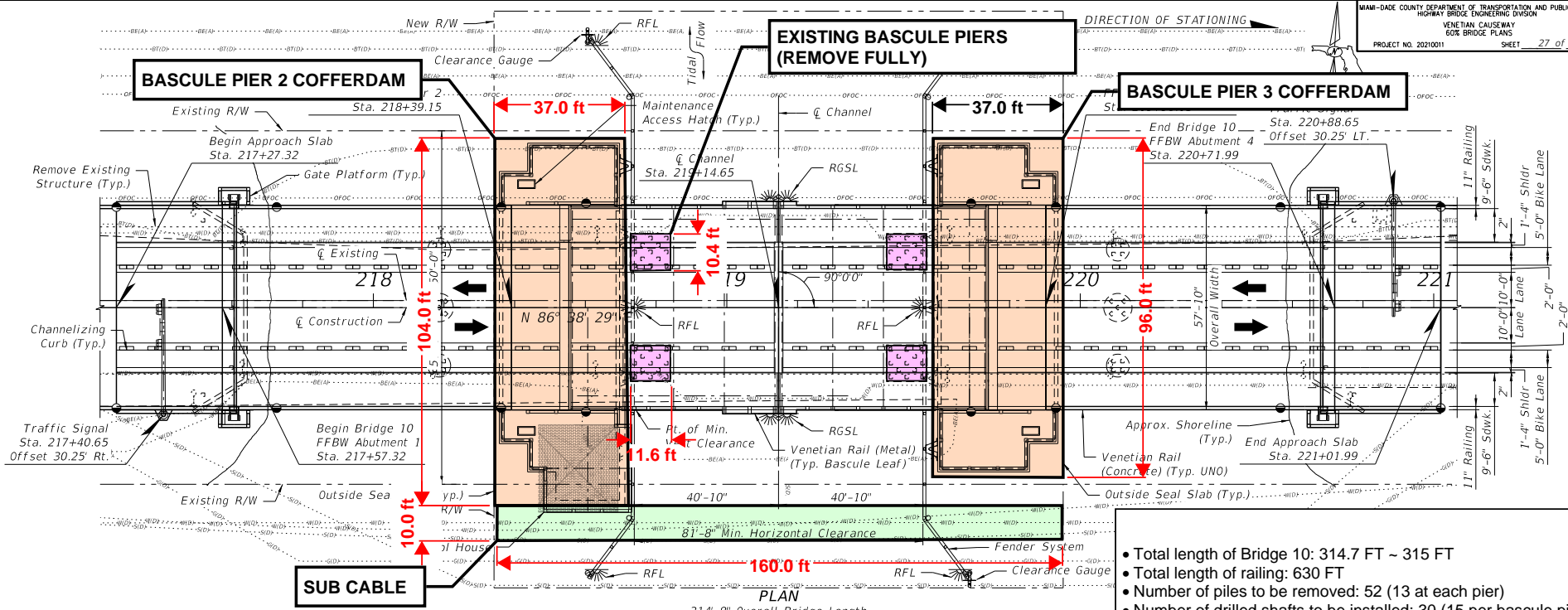
EAC CONSULTING, INC.
 5699 BLUE LAGOON DRIVE
 SUITE #10, MIAMI, FL 33126
 PH: 305.326.5400
 CA# 7011

DESIGNED BY	NAME	DATE	DESIGNED BY	NAME	DATE
	K.T.L.	12/24		EP	12/24
CHECKED BY	CL	12/24	CHECKED BY	RA	12/24
SUPERSEDED BY	K. T. LIN, P.E.				

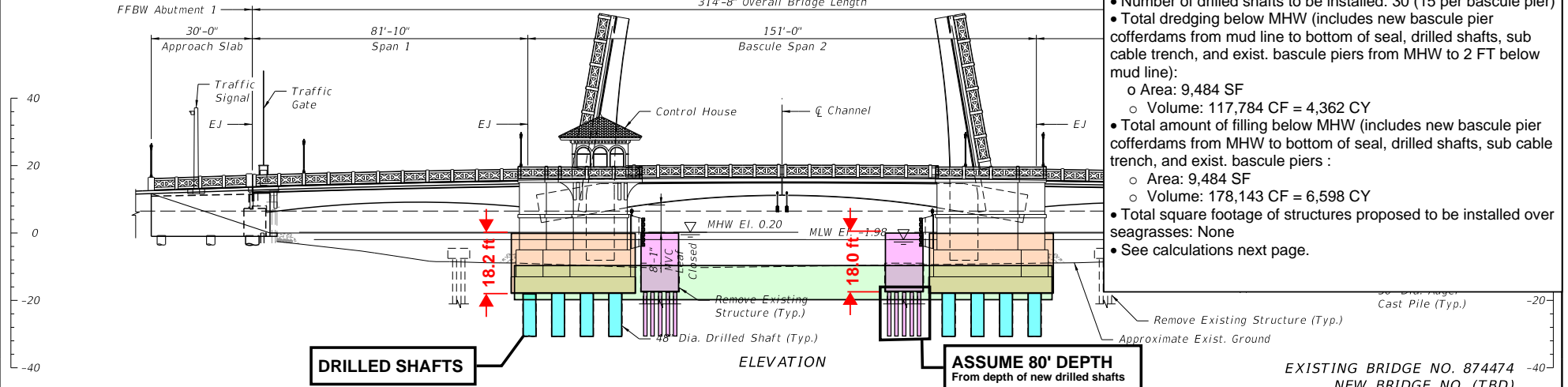
MIAMI-DADE COUNTY

DEPARTMENT OF TRANSPORTATION AND PUBLIC WORKS
 HIGHWAY BRIDGE ENGINEERING DIVISION
 OVERTOWN TRANSIT VILLAGE
 701 NW 1ST ST, MIAMI, FL 33136

BRIDGE 9
 ELEVATION



- Total length of Bridge 10: 314.7 FT ~ 315 FT
- Total length of railing: 630 FT
- Number of piles to be removed: 52 (13 at each pier)
- Number of drilled shafts to be installed: 30 (15 per bascule pier)
- Total dredging below MHW (includes new bascule pier cofferdams from mud line to bottom of seal, drilled shafts, sub cable trench, and exist. bascule piers from MHW to 2 FT below mud line):
 - o Area: 9,484 SF
 - o Volume: 117,784 CF = 4,362 CY
- Total amount of filling below MHW (includes new bascule pier cofferdams from MHW to bottom of seal, drilled shafts, sub cable trench, and exist. bascule piers):
 - o Area: 9,484 SF
 - o Volume: 178,143 CF = 6,598 CY
- Total square footage of structures proposed to be installed over seagrasses: None
- See calculations next page.



REVISIONS					
DATE	BY	DESCRIPTION	DATE	BY	DESCRIPTION

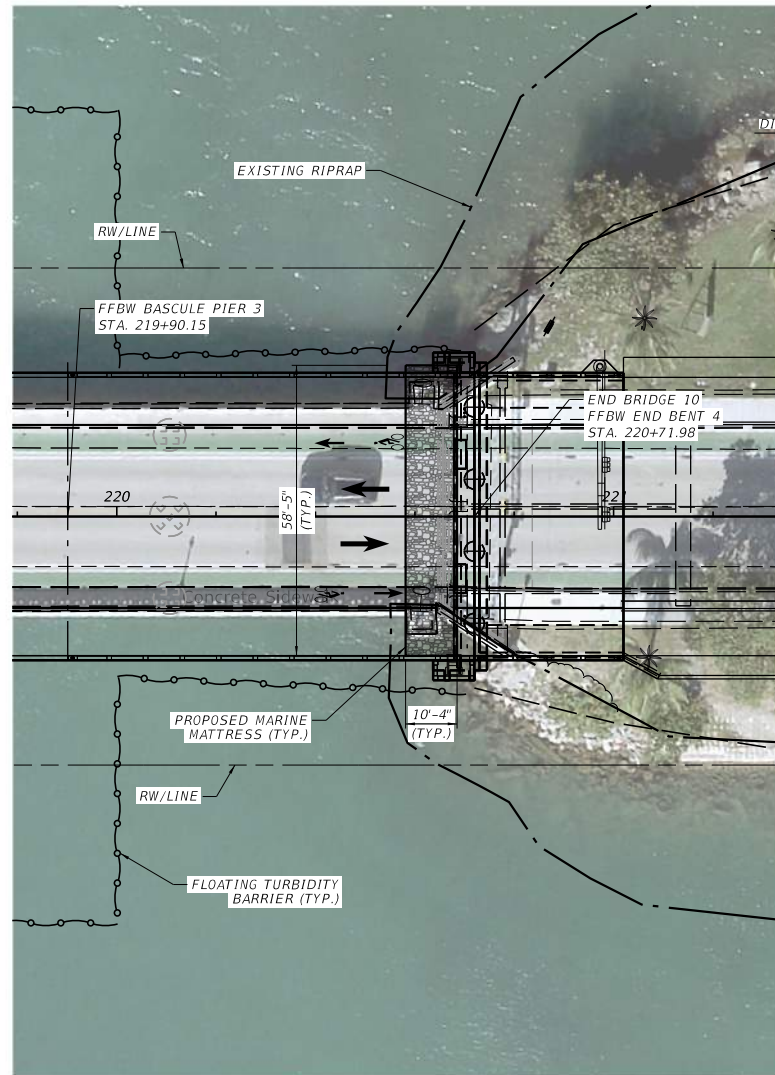
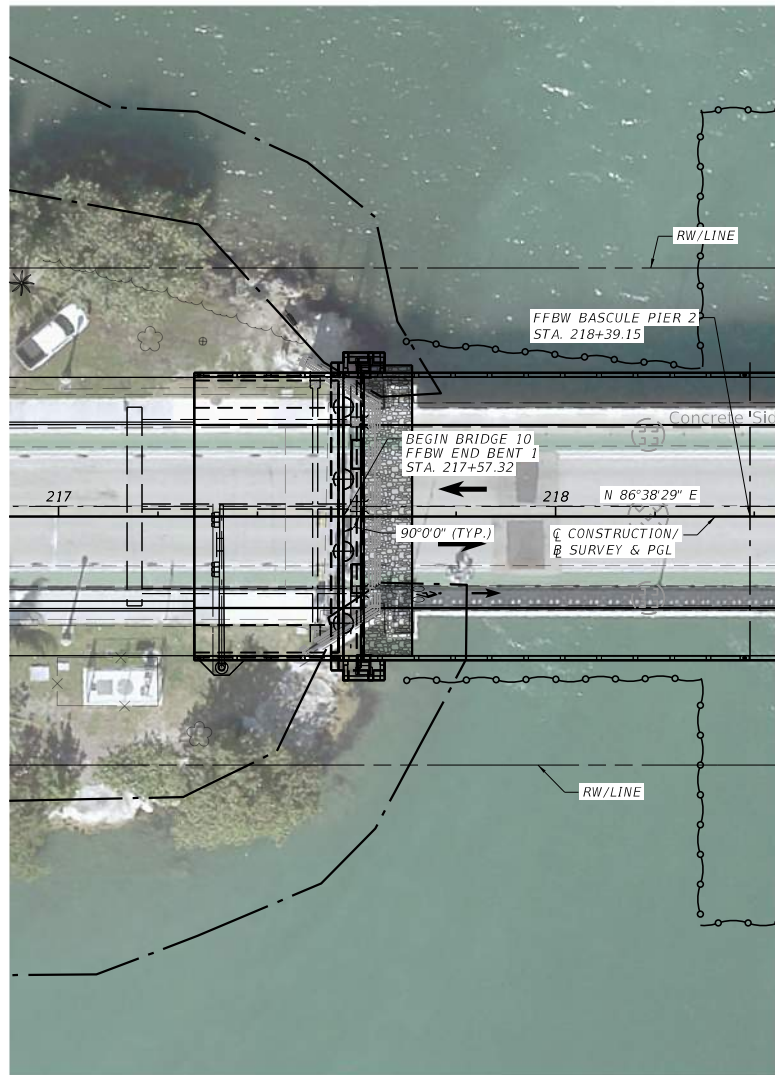
HARDESTY & HANOVER LLC.
 3250 W. COMMERCIAL BLVD.
 SUITE 348
 FORT LAUDERDALE, FL 33309
 PH: 954-835-9119
 CA#

DESIGNED BY	CHECKED BY	DATE	DATE	DATE

DEPARTMENT OF TRANSPORTATION AND PUBLIC WORKS
 HIGHWAY BRIDGE ENGINEERING DIVISION
 OVERTOWN TRANSIT VILLAGE
 791 NW 1ST CT. MIAMI, FL 33136



DIRECTION OF STATIONING



PLAN

REVISIONS					
DATE	BY	DESCRIPTION	DATE	BY	DESCRIPTION

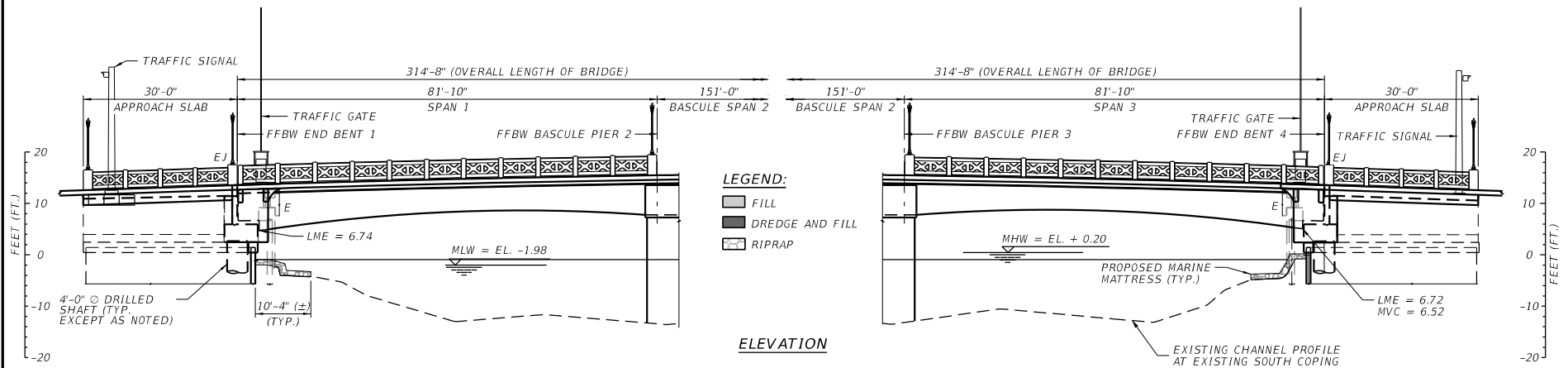
EAC
 EAC Consulting, Inc.
 5699 BLUE LAGOON DRIVE
 SUITE #10, MIAMI, FL 33126
 PH: 305.585.6400
 CA# 7011

DESIGNED BY	NAME	DATE	CHECKED BY	NAME	DATE
	K.T.L.	12/24		EP	12/24
	CL	12/24		HA	12/24

SUPERVISOR BY: K.T. LIN, P.E.

MIAMI-DADE COUNTY
 DEPARTMENT OF TRANSPORTATION AND PUBLIC WORKS
 HIGHWAY BRIDGE ENGINEERING DIVISION
 OVERTOWN TRANSIT ALLIANCE
 701 NW 151ST CT, MIAMI, FL 33138

BRIDGE 10 - WEST & EAST APPROACH SPANS PLAN



REVISIONS					
DATE	BY	DESCRIPTION	DATE	BY	DESCRIPTION

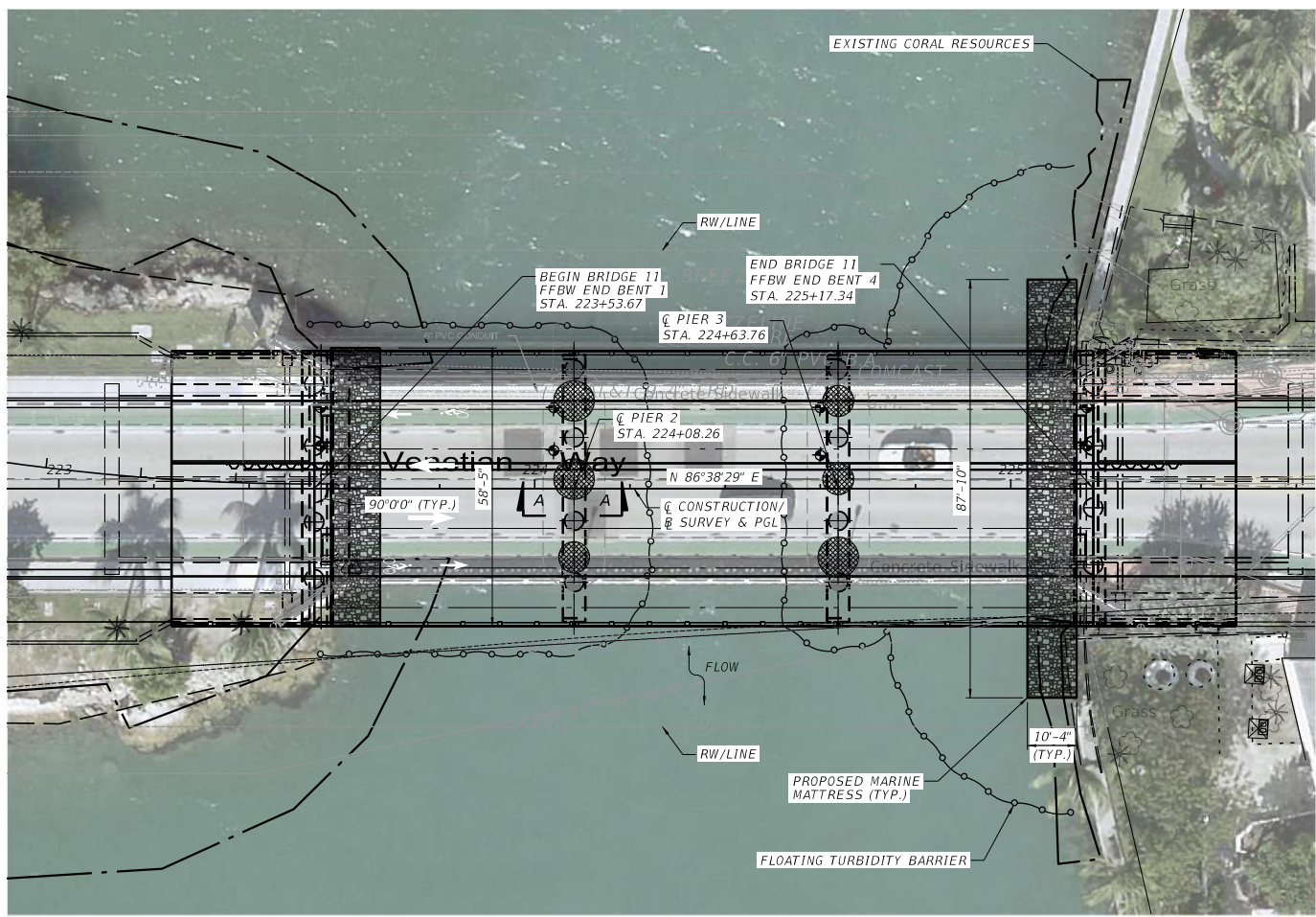
EAC
EAC Consulting, Inc.
5699 BLUE LAGOON DRIVE
SUITE #10, MIAMI, FL 33126
PH: 305-555-5400
CA# 7011

DESIGNED BY	NAME	DATE	CHECKED BY	NAME	DATE
	K.T.L.	12/24		EP	12/24
	CL	12/24		RA	12/24

SUPERVISOR BY: K.T.LIN, P.E.

MIAMI-DADE COUNTY
DEPARTMENT OF TRANSPORTATION AND PUBLIC WORKS
HIGHWAY BRIDGE ENGINEERING DIVISION
OVERTOWN TRANSIT MALLAGE
701 NW 1ST ST MIAMI, FL 33138

BRIDGE 10 - WEST & EAST APPROACH SPANS ELEVATION



- LEGEND:**
- FILL
 - DREGDE
 - DREGDE AND FILL
 - RIPRAP

PLAN

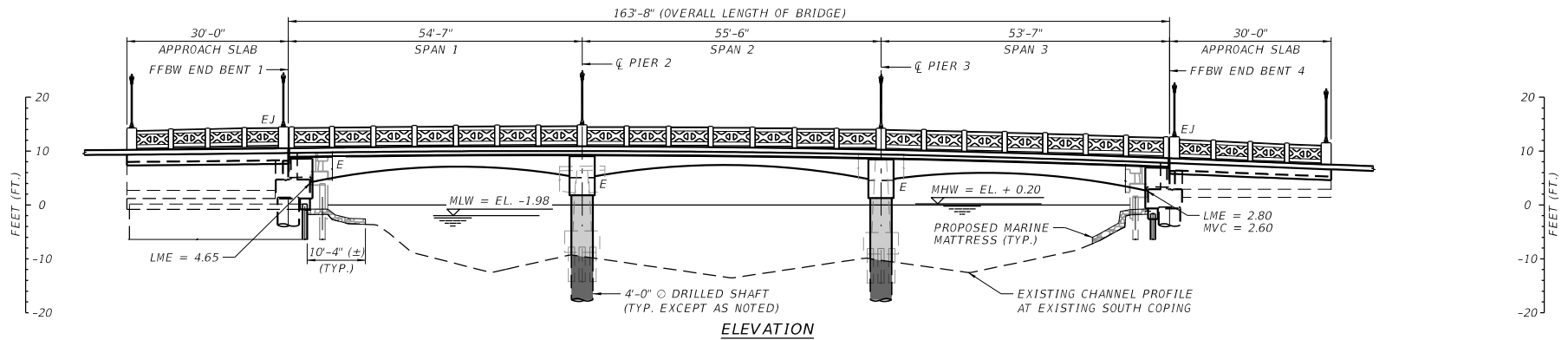
REVISIONS					
DATE	BY	DESCRIPTION	DATE	BY	DESCRIPTION

EAC
 EAC Consulting, Inc.
 5699 BLUE LAGOON DRIVE
 SUITE #10, MIAMI, FL 33126
 PH: 305.326.5400
 CA# 7011

REVISION	NAME	DATE	REVISION	NAME	DATE
DESIGNED BY	K.T.L.	12/24	DRAWN BY	EP	12/24
CHECKED BY	CL	12/24	CHECKED BY	RA	12/24
SUPERSEDED BY: K.T.L.W., P.E.					

MIAMI-DADE COUNTY
 DEPARTMENT OF TRANSPORTATION AND PUBLIC WORKS
 HIGHWAY BRIDGE ENGINEERING DIVISION
 OVERTOWN TRANSIT MALLAGE
 701 NW 1ST ST, MIAMI, FL 33136

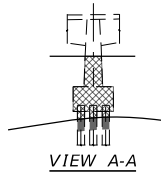
**BRIDGE 11
 PLAN**



ELEVATION

LEGEND:

- FILL
- DREGDE
- DREDGE AND FILL
- RIPRAP



VIEW A-A

REVISIONS					
DATE	BY	DESCRIPTION	DATE	BY	DESCRIPTION

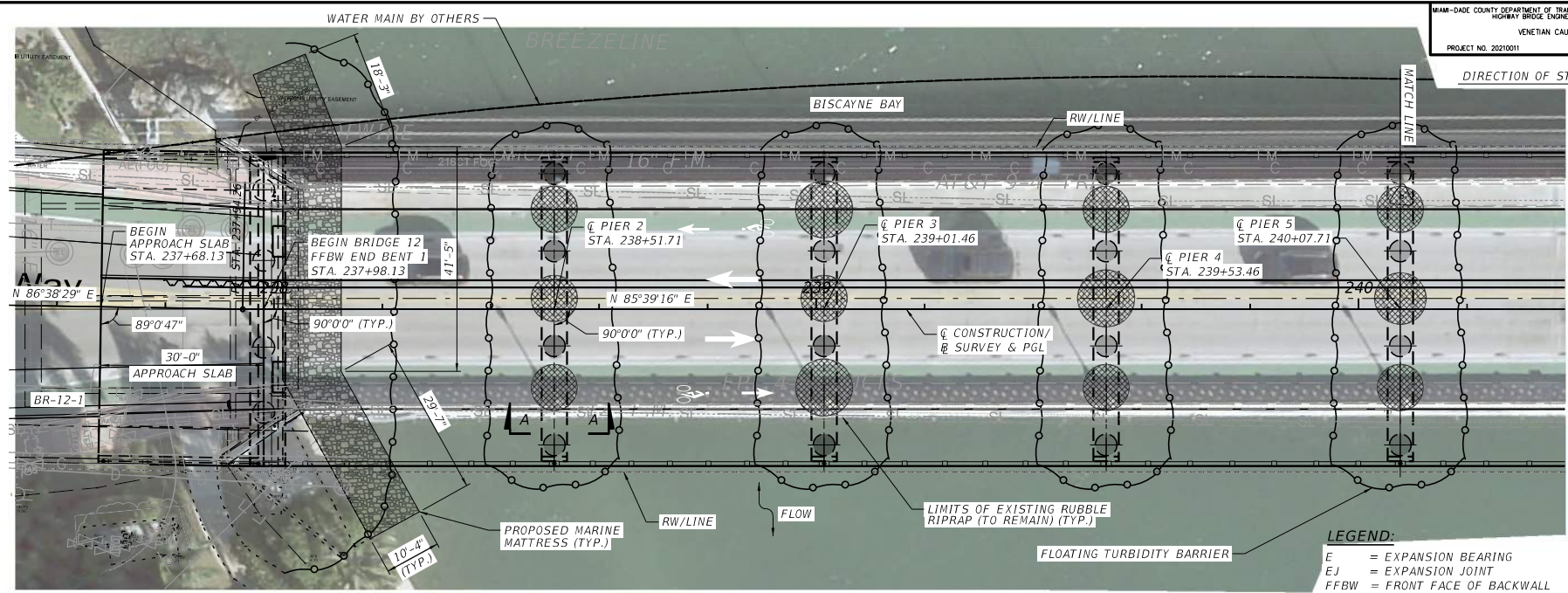
EAC
 EAC Consulting, Inc.
 5699 BLUE LAGOON DRIVE
 SUITE #10, MIAMI, FL 33126
 PH: 305.526.5400
 CA# 7011

DESIGNED BY	NAME	DATE	CHECKED BY	NAME	DATE
	K.T.L.	12/24		EP	12/24
	CL	12/24		RA	12/24

SUPERSEDED BY: K. T. LIN, P.E.

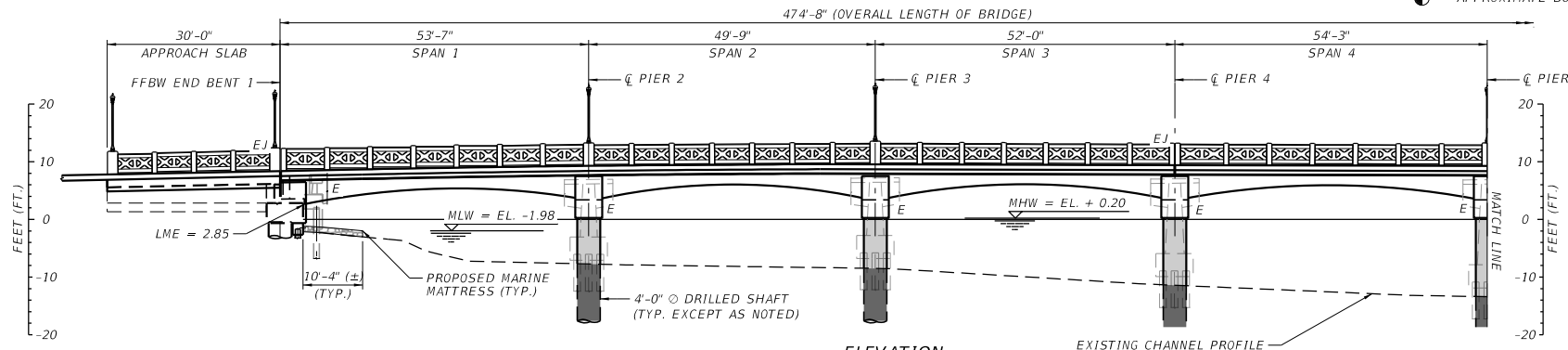
MIAMI-DADE COUNTY
 DEPARTMENT OF TRANSPORTATION AND PUBLIC WORKS
 HIGHWAY BRIDGE ENGINEERING DIVISION
 OVERTOWN TRANSIT MALLAGE
 701 NW 1ST ST, MIAMI, FL 33138

BRIDGE 11
 ELEVATION

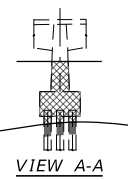


- LEGEND:**
- E = EXPANSION BEARING
 - EJ = EXPANSION JOINT
 - FFBW = FRONT FACE OF BACKWALL
 - MHW = MEAN HIGH WATER
 - MLW = MEAN LOW WATER
 - LME = LOW MEMBER ELEVATION
 - MVC = MINIMAL VERTICAL CLEARANCE
 - ⊙ = APPROXIMATE BORING LOCATION

PLAN



- LEGEND:**
- FILL
 - DREDGE
 - DREDGE AND FILL
 - RIPRAP



ELEVATION

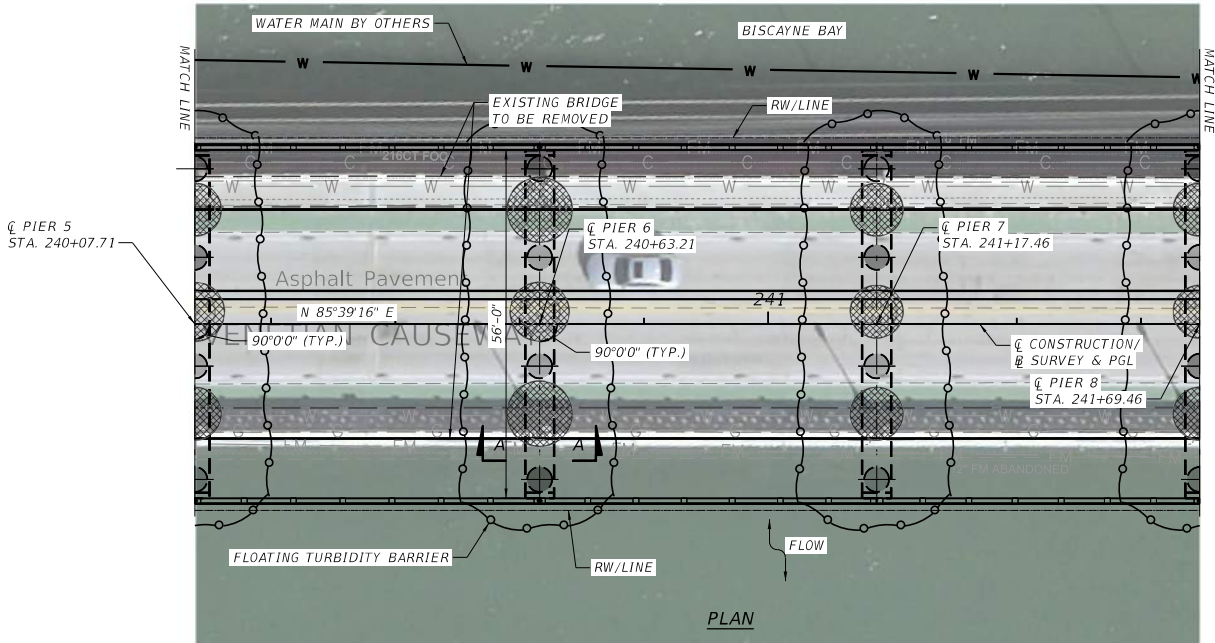
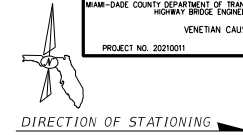
REVISIONS					
DATE	BY	DESCRIPTION	DATE	BY	DESCRIPTION

EAC CONSULTING, INC.
 5699 BLUE LAGOON DRIVE
 SUITE #10, MIAMI, FL 33126
 PH: 305.365.6400
 CA# 7011

DESIGNED BY	NAME	DATE	CHECKED BY	NAME	DATE
	K.T.L.	12/24		E.P.	12/24

MIAMI-DADE COUNTY
 DEPARTMENT OF TRANSPORTATION AND PUBLIC WORKS
 HIGHWAY BRIDGE ENGINEERING DIVISION
 JOVETOWN TRANSIT ALLIANCE
 701 NW 157th ST, MIAMI, FL 33138

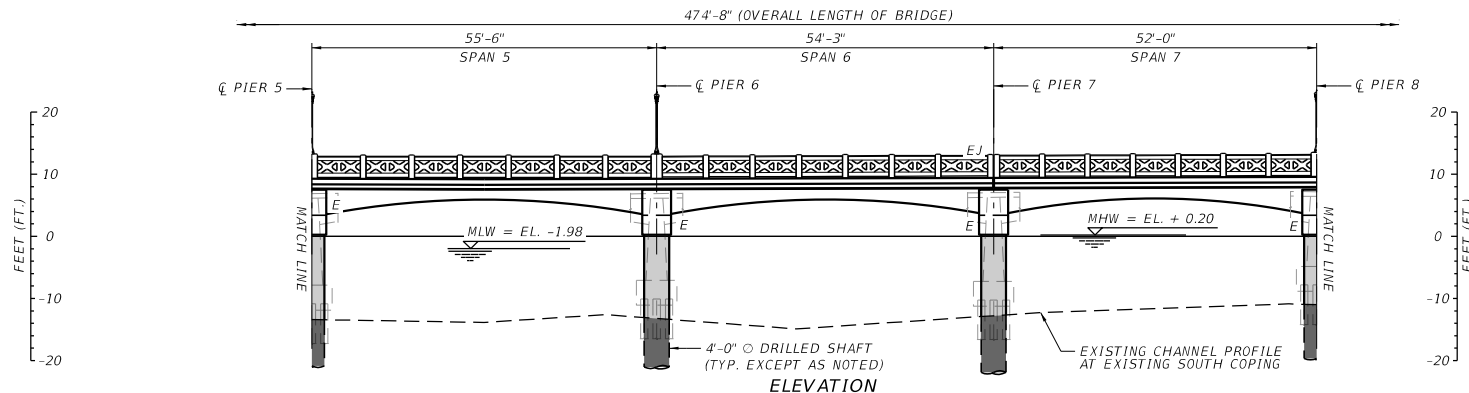
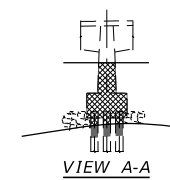
**BRIDGE 12
 PLAN AND ELEVATION (1)**



- LEGEND:**
- FILL
 - DREGDE
 - DREGDE AND FILL
 - RIPRAP

- LEGEND:**
- E = EXPANSION BEARING
 - EJ = EXPANSION JOINT
 - FFBW = FRONT FACE OF BACKWALL
 - MHW = MEAN HIGH WATER
 - MLW = MEAN LOW WATER
 - LME = LOW MEMBER ELEVATION

- NOTES:**
- FOR VERTICAL CURVE DATA, SEE SHEET B12-3.



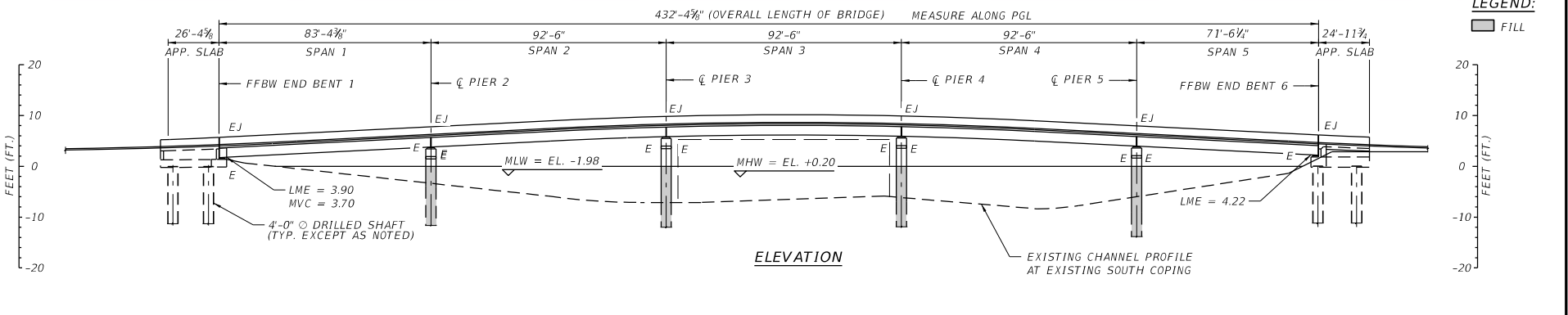
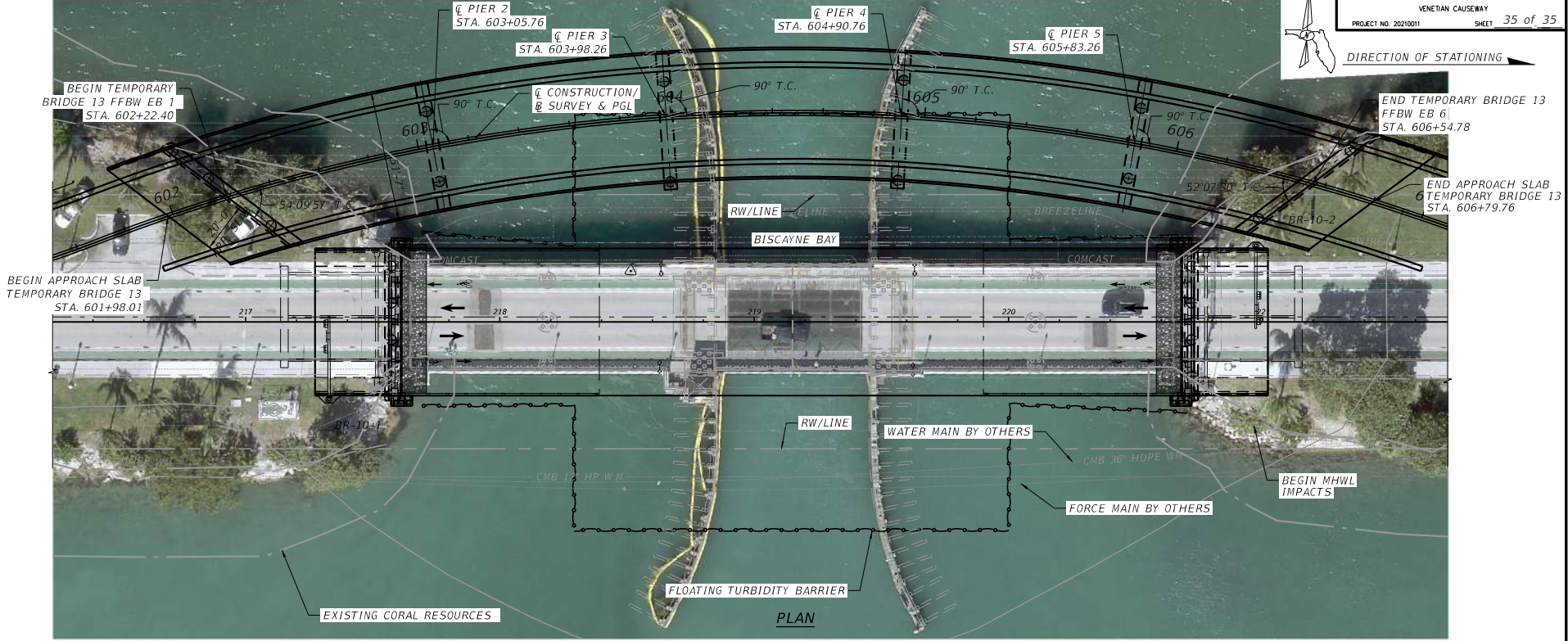
REVISIONS					
DATE	BY	DESCRIPTION	DATE	BY	DESCRIPTION

EAC
 EAC Consulting, Inc.
 5699 BLUE LAGOON DRIVE
 SUITE 410, MIAMI, FL 33126
 PH: 305.365.6400
 CA# 7011

DESIGNED BY	NAME	DATE	CHECKED BY	NAME	DATE

DEPARTMENT OF TRANSPORTATION AND PUBLIC WORKS
 HIGHWAY BRIDGE ENGINEERING DIVISION
 JOVINTOWN TRANSIT VILLAGE
 701 NW 157th ST MIAMI, FL 33138

BRIDGE 12
 PLAN AND ELEVATION (2)



LEGEND:
 FILL

REVISIONS					
DATE	BY	DESCRIPTION	DATE	BY	DESCRIPTION

EAC
 EAC Consulting, Inc.
 5659 BLUE LAGOON DRIVE
 SUITE #10, MIAMI, FL 33126
 PH: 305.326.5400
 CA# 7011

DESIGNED BY	NAME	DATE	DESIGNED BY	NAME	DATE
	K.T.L.	12/24		EP	12/24
CHECKED BY	K.T.L.	12/24	CHECKED BY	RA	12/24
SUPERVISOR	K. T. LIN, P.E.				

MIAMI-DADE COUNTY
 DEPARTMENT OF TRANSPORTATION AND PUBLIC WORKS
 HIGHWAY BRIDGE ENGINEERING DIVISION
 OVERTOWN TRANSIT VILLAGE
 731 NW 157 STREET MIAMI, FL 33138

TEMPORARY BRIDGE 13
 PLAN AND ELEVATION

THIS PROJECT TO BE LET TO CONTRACT WITH
FINANCIAL PROJECT ID(S):

- 422713-4-58-01
- 422713-5-58-01
- 422713-6-58-01
- 422713-7-58-01
- 422713-8-58-01
- 422713-9-58-01
- 451396-1-58-01
- 451396-2-58-01
- 451396-3-58-01
- 451396-4-58-01
- 451396-5-58-01

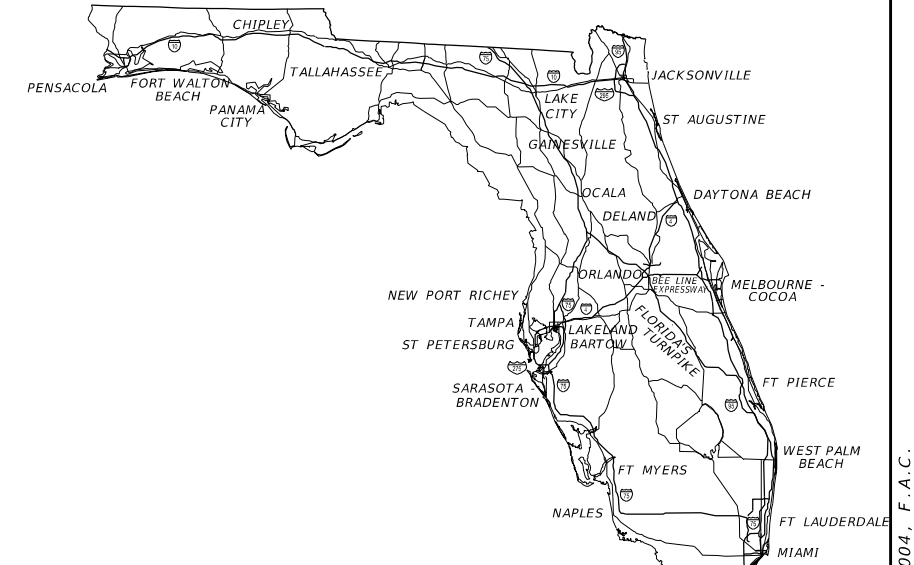
STATE OF FLORIDA
DEPARTMENT OF TRANSPORTATION

TYPICAL SECTION PACKAGE

(FEDERAL FUNDS)

MIAMI DADE COUNTY (87522)

VENETIAN CAUSEWAY BRIDGE REPLACEMENT, FROM BISCAIYNE
ISLAND (MIAMI) TO PURDY AVENUE (MIAMI BEACH)



FDOT DISTRICT DESIGN ENGINEER KARINA FUENTES, P.E.	FDOT DISTRICT TRAFFIC OPERATIONS ENGINEER OMAR MEITIN, P.E.
---	--

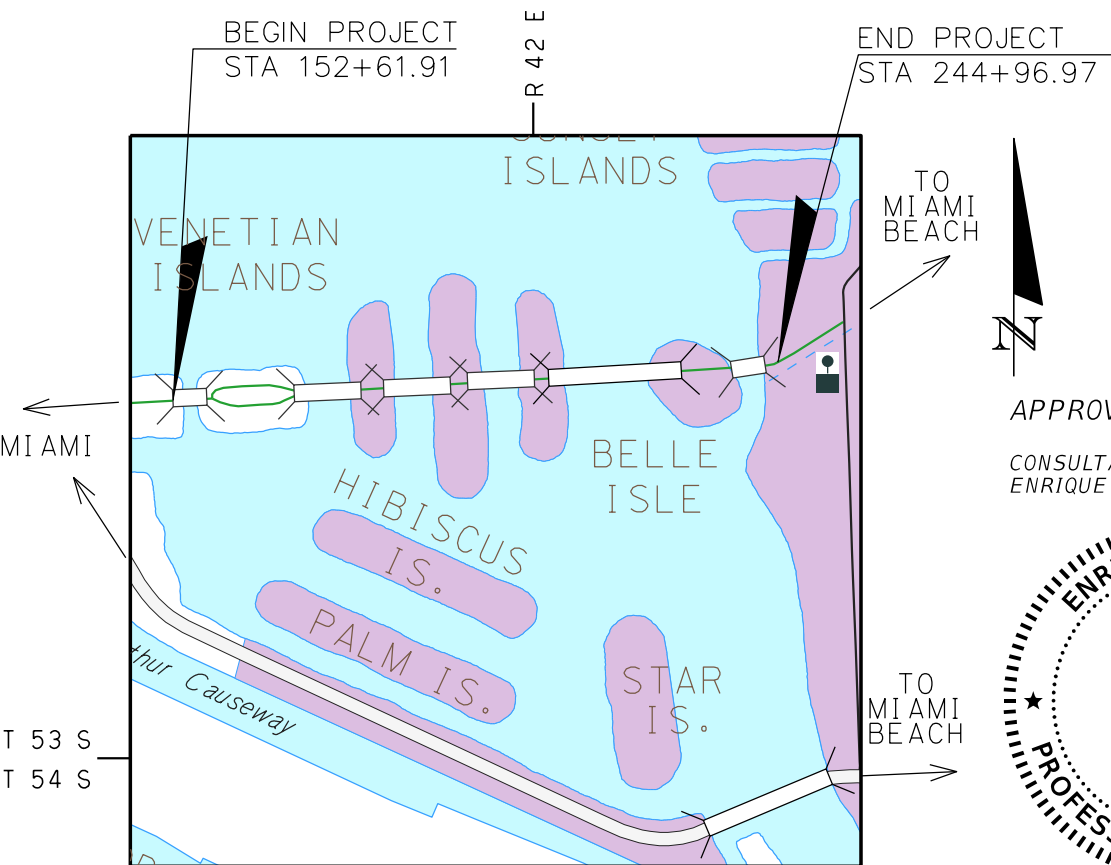
CONCURRING WITH: TYPICAL SECTION ELEMENTS DESIGN & POSTED SPEEDS	CONCURRING WITH: DESIGN & POSTED SPEEDS
--	--

FDOT DISTRICT PLANNING AND ENVIRONMENTAL ADMINISTRATOR	FDOT DISTRICT STRUCTURES DESIGN ENGINEER HAILING ZHANG, P.E.
--	---

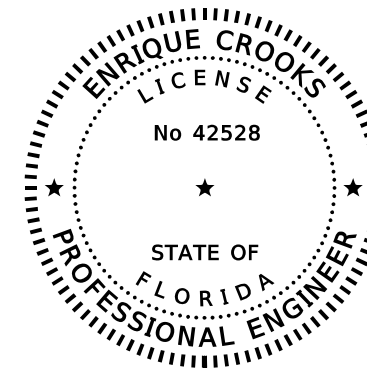
CONCURRING WITH: CONTEXT CLASSIFICATION	CONCURRING WITH: TYPICAL SECTION ELEMENTS
--	--

MIAMI-DADE COUNTY
DEPARTMENT OF TRANSPORTATION T 53 S
AND PUBLIC WORKS T 54 S
DEPUTY DIRECTOR - CHIEF PROJECT
DELIVERY OFFICER

CONCURRING WITH:	CONCURRING WITH: TYPICAL SECTION ELEMENTS DESIGN & POSTED SPEEDS
------------------	--



APPROVED BY:
CONSULTANT PROJECT MANAGER
ENRIQUE CROOKS, P.E.



THIS ITEM HAS BEEN DIGITALLY
SIGNED AND SEALED BY

ON THE DATE ADJACENT TO THE SEAL
PRINTED COPIES OF THIS DOCUMENT ARE
NOT CONSIDERED SIGNED AND SEALED
AND THE SIGNATURE MUST BE VERIFIED
ON ANY ELECTRONIC COPIES.

EAC CONSULTING, INC.
5959 WATERFORD DISTRICT DRIVE
SUITE 410
MIAMI, FLORIDA 33126
ENRIQUE CROOKS, P.E. NO. 42528

THE ABOVE NAMED PROFESSIONAL ENGINEER SHALL BE RESPONSIBLE FOR THE
FOLLOWING SHEETS IN ACCORDANCE WITH RULE 61G15-23.004, F.A.C.

INDEX OF SHEETS

SHEET NO.	SHEET DESCRIPTION
1	COVER SHEET
2 - 5	ROADWAY TYPICAL SECTION
6	BRIDGE TYPICAL SECTION
7	BASCULE BRIDGE TYPICAL SECTION

SHEET NO.
1

12/21/2025 10:39:55 PM dcastillo L:\Project\21\Project\21039 - PD01-01 Venetian Causeway Final Design At Risk\CADD\roadway\TYPDRD01.dgn

THE OFFICIAL RECORD OF THIS SHEET IS THE ELECTRONIC FILE DIGITALLY SIGNED AND SEALED UNDER RULE 61G15-23.004, F.A.C.

PROJECT CONTROLS

CONTEXT CLASSIFICATION

- () C1 : NATURAL () C3C : SUBURBAN COMM.
- () C2 : RURAL () C4 : URBAN GENERAL
- () C2T : RURAL TOWN () C5 : URBAN CENTER
- () C3R : SUBURBAN RES. () C6 : URBAN CORE
- () N/A : L.A. FACILITY

FUNCTIONAL CLASSIFICATION

- () INTERSTATE () MAJOR COLLECTOR
- () FREEWAY/EXPWY. () MINOR COLLECTOR
- () PRINCIPAL ARTERIAL () LOCAL
- (X) MINOR ARTERIAL

HIGHWAY SYSTEM

- () NATIONAL HIGHWAY SYSTEM
- () STRATEGIC INTERMODAL SYSTEM
- () STATE HIGHWAY SYSTEM
- (X) OFF-STATE HIGHWAY SYSTEM

ACCESS CLASSIFICATION

- () 1 - FREEWAY
- () 2 - RESTRICTIVE w/Service Roads
- () 3 - RESTRICTIVE w/660 ft. Connection Spacing
- () 4 - NON-RESTRICTIVE w/2640 ft. Signal Spacing
- () 5 - RESTRICTIVE w/440 ft. Connection Spacing
- () 6 - NON-RESTRICTIVE w/1320 ft. Signal Spacing
- (X) 7 - BOTH MEDIAN TYPES

CRITERIA

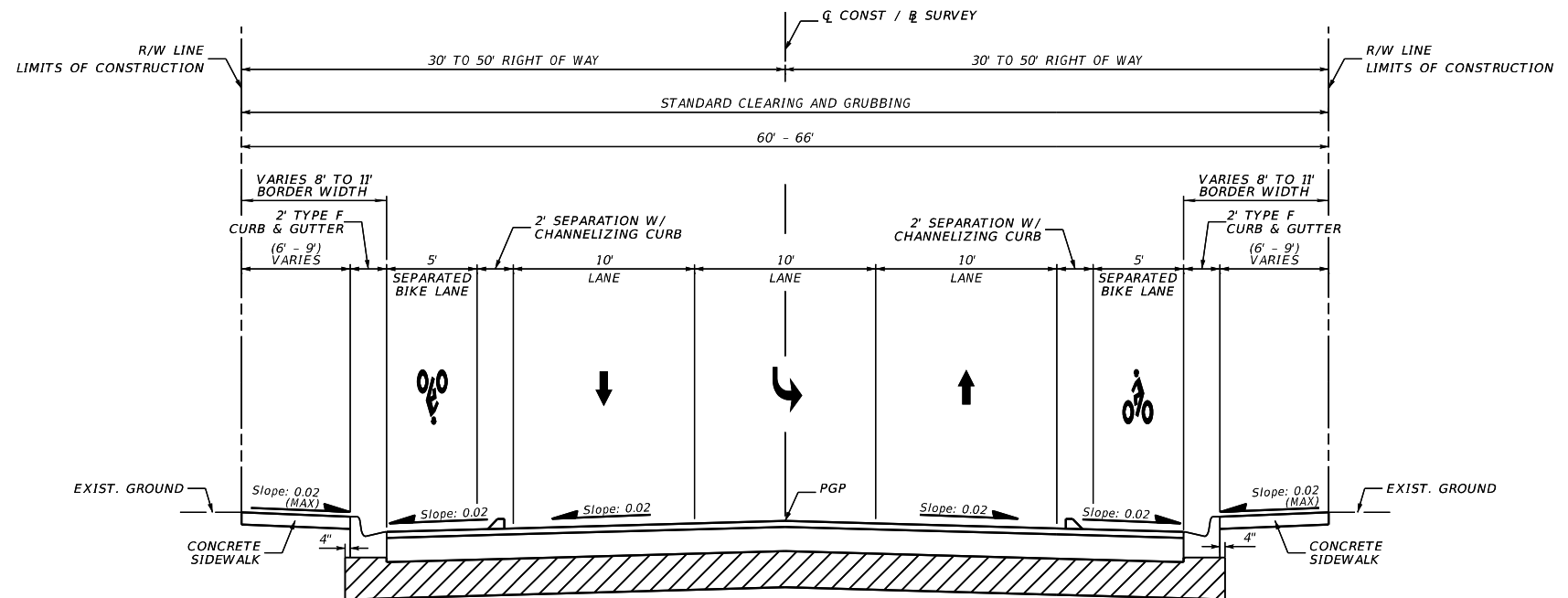
- (X) NEW CONSTRUCTION / RECONSTRUCTION
- () RESURFACING (LA FACILITIES)
- () RRR (ARTERIALS & COLLECTORS)

POTENTIAL EXCEPTIONS AND VARIATIONS RELATED TO TYPICAL SECTION:

DESIGN VARIATIONS

1. DECELERATION DISTANCE
2. HORIZONTAL CURVE LENGTH
3. VERTICAL CURVE
4. LATERAL OFFSET TO TEMP. BARRIER

ROADWAY TYPICAL SECTION No. 1



ROADWAY TYPICAL SECTION

VENETIAN CAUSEWAY

- STA. 152+61.91 TO STA. 154+39.86 - FPID# 422713-4-58-01
- STA. 185+25.37 TO STA. 187+12.11 - FPID# 422713-7-58-01
- STA. 198+24.45 TO STA. 200+09.18 - FPID# 422713-9-58-01
- STA. 211+25.00 TO STA. 213+11.51 - FPID# 451396-2-58-01
- STA. 225+17.34 TO STA. 226+75.00 - FPID# 451396-4-58-01
- STA. 235+33.44 TO STA. 237+98.13 - FPID# 451396-5-58-01
- STA. 242+72.80 TO STA. 244+96.97 - FPID# 451396-5-58-01

TRAFFIC DATA

CURRENT YEAR = 2024 AADT = 11,000
 ESTIMATED OPENING YEAR = 2026 AADT = 11,312
 ESTIMATED DESIGN YEAR = 2046 AADT = 14,968
 K = 9.0% D = 54.9% T = 3.4 % (24 HOUR)
 DESIGN SPEED = 30 MPH
 POSTED SPEED = 25 MPH
 TARGET SPEED = N/A

FINANCIAL PROJECT ID

422713-5-58-01

SHEET NO.

2

12/21/2025 10:21:41 PM dcastillo L:\Project\21039\Project\21039_Venetian_Causeway_Final_Design_At_Risk\CADD\roadway\TYPRD01.dgn

THE OFFICIAL RECORD OF THIS SHEET IS THE ELECTRONIC FILE DIGITALLY SIGNED AND SEALED UNDER RULE 61G15-23.004, F.A.C.

PROJECT CONTROLS

CONTEXT CLASSIFICATION

- () C1 : NATURAL () C3C : SUBURBAN COMM.
- () C2 : RURAL () C4 : URBAN GENERAL
- () C2T : RURAL TOWN () C5 : URBAN CENTER
- () C3R : SUBURBAN RES. () C6 : URBAN CORE
- () N/A : L.A. FACILITY

FUNCTIONAL CLASSIFICATION

- () INTERSTATE () MAJOR COLLECTOR
- () FREEWAY/EXPWY. () MINOR COLLECTOR
- () PRINCIPAL ARTERIAL () LOCAL
- (X) MINOR ARTERIAL

HIGHWAY SYSTEM

- () NATIONAL HIGHWAY SYSTEM
- () STRATEGIC INTERMODAL SYSTEM
- () STATE HIGHWAY SYSTEM
- (X) OFF-STATE HIGHWAY SYSTEM

ACCESS CLASSIFICATION

- () 1 - FREEWAY
- () 2 - RESTRICTIVE w/Service Roads
- () 3 - RESTRICTIVE w/660 ft. Connection Spacing
- () 4 - NON-RESTRICTIVE w/2640 ft. Signal Spacing
- () 5 - RESTRICTIVE w/440 ft. Connection Spacing
- () 6 - NON-RESTRICTIVE w/1320 ft. Signal Spacing
- (X) 7 - BOTH MEDIAN TYPES

CRITERIA

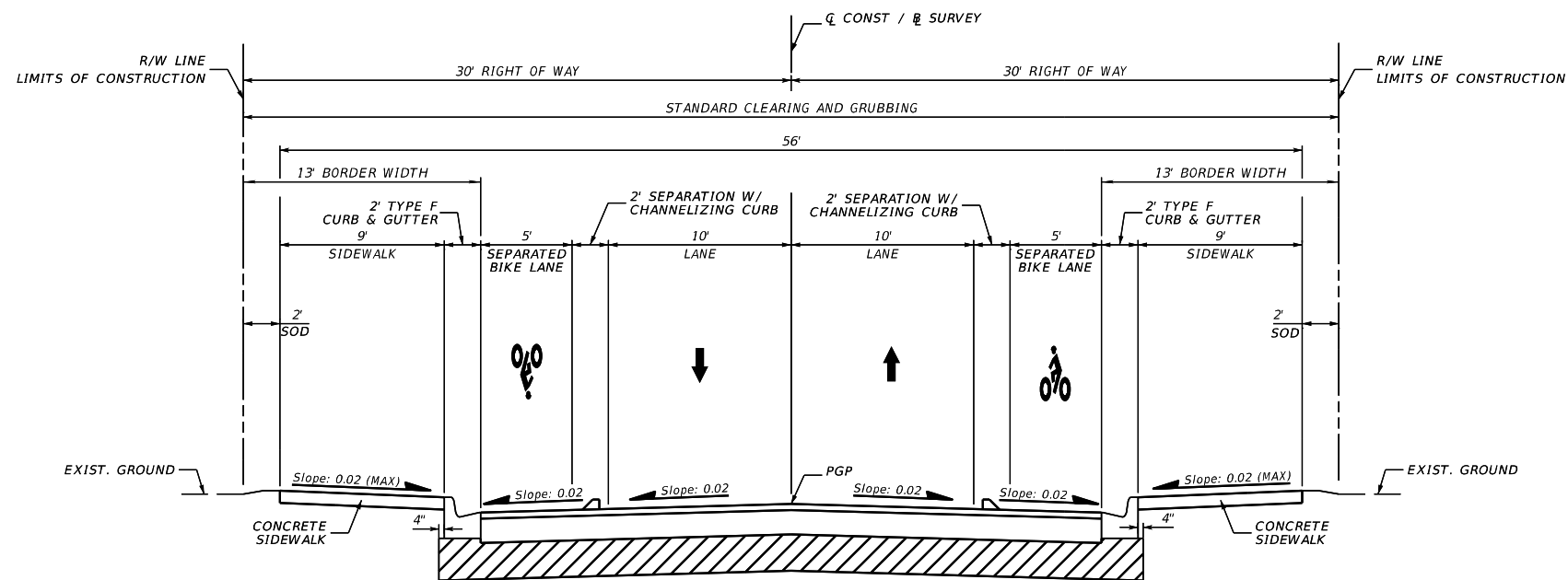
- (X) NEW CONSTRUCTION / RECONSTRUCTION
- () RESURFACING (LA FACILITIES)
- () RRR (ARTERIALS & COLLECTORS)

POTENTIAL EXCEPTIONS AND VARIATIONS RELATED TO TYPICAL SECTION:

DESIGN VARIATIONS

1. VERTICAL CURVE
2. LATERAL OFFSET TO TEMP. BARRIER

ROADWAY TYPICAL SECTION No. 2



ROADWAY TYPICAL SECTION

VENETIAN CAUSEWAY

- STA. 156+54.52 TO STA. 158+36.76 - FPID# 422713-4-58-01
- STA. 171+59.80 TO STA. 174+07.92 - FPID# 422713-5-58-01
- STA. 180+19.01 TO STA. 182+02.02 - FPID# 422713-6-58-01
- STA. 193+16.37 TO STA. 195+02.99 - FPID# 422713-8-58-01
- STA. 206+17.68 TO STA. 208+03.92 - FPID# 451396-1-58-01

TRAFFIC DATA

CURRENT YEAR = 2024 AADT = 11,000
 ESTIMATED OPENING YEAR = 2026 AADT = 11,312
 ESTIMATED DESIGN YEAR = 2046 AADT = 14,968
 K = 9.0% D = 54.9% T = 3.4% (24 HOUR)
 DESIGN SPEED = 30 MPH
 POSTED SPEED = 25 MPH
 TARGET SPEED = N/A

FINANCIAL PROJECT ID

422713-5-58-01

SHEET NO.

3

12/21/2025 10:21:42 PM dcastillo L:\Project\21039_P01-01_Venetian_Causeway_Final_Design_At_Risk\CADD\roadway\TYPRD01.dgn

THE OFFICIAL RECORD OF THIS SHEET IS THE ELECTRONIC FILE DIGITALLY SIGNED AND SEALED UNDER RULE 61G15-23.004, F.A.C.

PROJECT CONTROLS

CONTEXT CLASSIFICATION

- () C1 : NATURAL () C3C : SUBURBAN COMM.
- () C2 : RURAL () C4 : URBAN GENERAL
- () C2T : RURAL TOWN () C5 : URBAN CENTER
- () C3R : SUBURBAN RES. () C6 : URBAN CORE
- () N/A : L.A. FACILITY

FUNCTIONAL CLASSIFICATION

- () INTERSTATE () MAJOR COLLECTOR
- () FREEWAY/EXPWY. () MINOR COLLECTOR
- () PRINCIPAL ARTERIAL () LOCAL
- (X) MINOR ARTERIAL

HIGHWAY SYSTEM

- () NATIONAL HIGHWAY SYSTEM
- () STRATEGIC INTERMODAL SYSTEM
- () STATE HIGHWAY SYSTEM
- (X) OFF-STATE HIGHWAY SYSTEM

ACCESS CLASSIFICATION

- () 1 - FREEWAY
- () 2 - RESTRICTIVE w/Service Roads
- () 3 - RESTRICTIVE w/660 ft. Connection Spacing
- () 4 - NON-RESTRICTIVE w/2640 ft. Signal Spacing
- () 5 - RESTRICTIVE w/440 ft. Connection Spacing
- () 6 - NON-RESTRICTIVE w/1320 ft. Signal Spacing
- (X) 7 - BOTH MEDIAN TYPES

CRITERIA

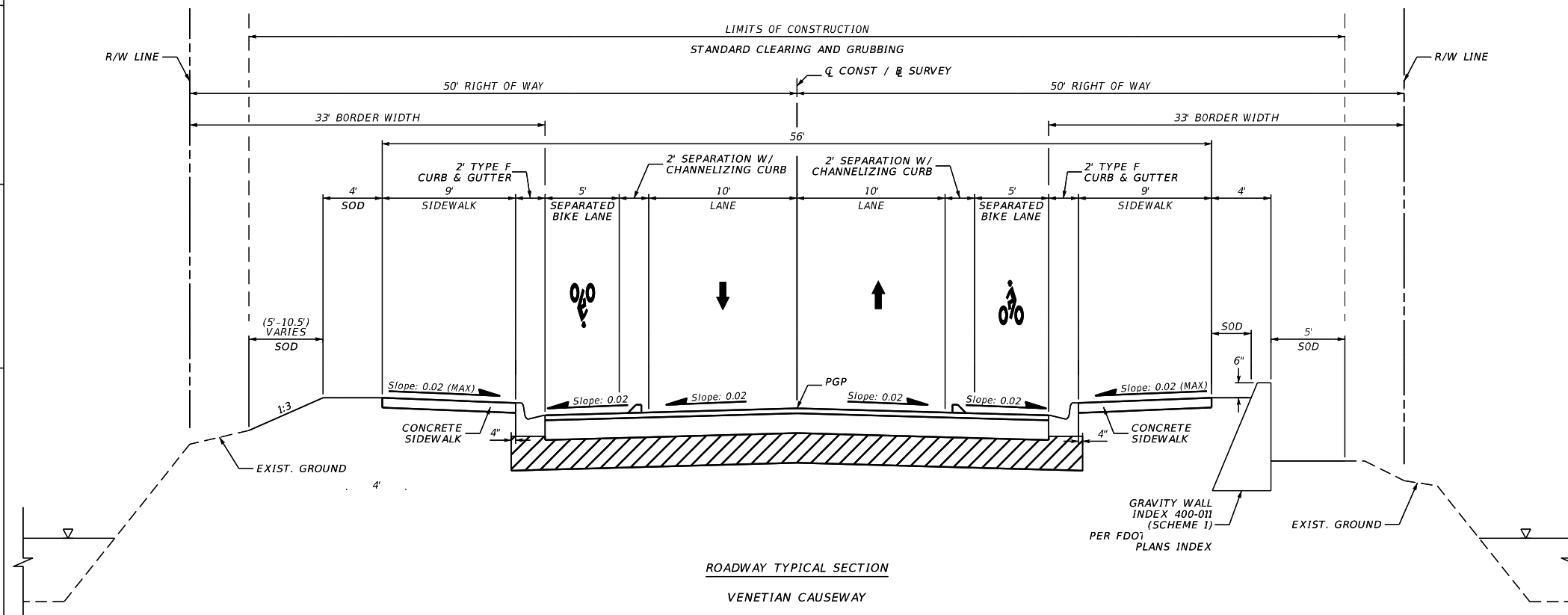
- (X) NEW CONSTRUCTION / RECONSTRUCTION
- () RESURFACING (LA FACILITIES)
- () RRR (ARTERIALS & COLLECTORS)

POTENTIAL EXCEPTIONS AND VARIATIONS RELATED TO TYPICAL SECTION:

DESIGN VARIATIONS

1. VERTICAL CURVE
2. LATERAL OFFSET TO TEMP. BARRIER

ROADWAY TYPICAL SECTION No. 3



- SPOIL ISLAND #1, STA. 175+82.59 TO STA. 176+19.81 - FPID# 422713-5-58-01
- SPOIL ISLAND #1, STA. 176+19.81 TO STA. 178+44.34 - FPID# 422713-6-58-01
- SPOIL ISLAND #2, STA. 188+86.78 TO STA. 189+24.00 - FPID# 422713-7-58-01
- SPOIL ISLAND #2, STA. 189+24.00 TO STA. 191+41.70 - FPID# 422713-8-58-01
- SPOIL ISLAND #3 STA. 201+83.84 TO STA. 204+05.79 - FPID# 422713-9-58-01
- SPOIL ISLAND #3 STA. 204+05.79 TO STA. 204+43.01 - FPID# 451396-1-58-01
- SPOIL ISLAND #5, STA. 220+71.98 TO STA. 221+09.20 - FPID# 451396-3-58-01
- SPOIL ISLAND #5, STA. 221+09.20 TO STA. 223+53.67 - FPID# 451396-4-58-01

TRAFFIC DATA

CURRENT YEAR = 2024 AADT = 11,000
 ESTIMATED OPENING YEAR = 2026 AADT = 11,312
 ESTIMATED DESIGN YEAR = 2046 AADT = 14,968
 K = 9.0% D = 54.9% T = 3.4 % (24 HOUR)
 DESIGN SPEED = 30 MPH
 POSTED SPEED = 25 MPH
 TARGET SPEED = N/A

FINANCIAL PROJECT ID

422713-5-58-01

SHEET NO.

4

12/21/2025 10:21:42 PM dcastillo L:\Project\21\Project\21039_PD01-01_Venetian_Causeway_Final_Design_At_Risk\CADD\roadway\TYPDR001.dgn

THE OFFICIAL RECORD OF THIS SHEET IS THE ELECTRONIC FILE DIGITALLY SIGNED AND SEALED UNDER RULE 61G15-23.004, F.A.C.

PROJECT CONTROLS

CONTEXT CLASSIFICATION

- () C1 : NATURAL () C3C : SUBURBAN COMM.
- () C2 : RURAL () C4 : URBAN GENERAL
- () C2T : RURAL TOWN () C5 : URBAN CENTER
- () C3R : SUBURBAN RES. () C6 : URBAN CORE
- () N/A : L.A. FACILITY

FUNCTIONAL CLASSIFICATION

- () INTERSTATE () MAJOR COLLECTOR
- () FREEWAY/EXPWY. () MINOR COLLECTOR
- () PRINCIPAL ARTERIAL () LOCAL
- (X) MINOR ARTERIAL

HIGHWAY SYSTEM

- () NATIONAL HIGHWAY SYSTEM
- () STRATEGIC INTERMODAL SYSTEM
- () STATE HIGHWAY SYSTEM
- (X) OFF-STATE HIGHWAY SYSTEM

ACCESS CLASSIFICATION

- () 1 - FREEWAY
- () 2 - RESTRICTIVE w/Service Roads
- () 3 - RESTRICTIVE w/660 ft. Connection Spacing
- () 4 - NON-RESTRICTIVE w/2640 ft. Signal Spacing
- () 5 - RESTRICTIVE w/440 ft. Connection Spacing
- () 6 - NON-RESTRICTIVE w/1320 ft. Signal Spacing
- (X) 7 - BOTH MEDIAN TYPES

CRITERIA

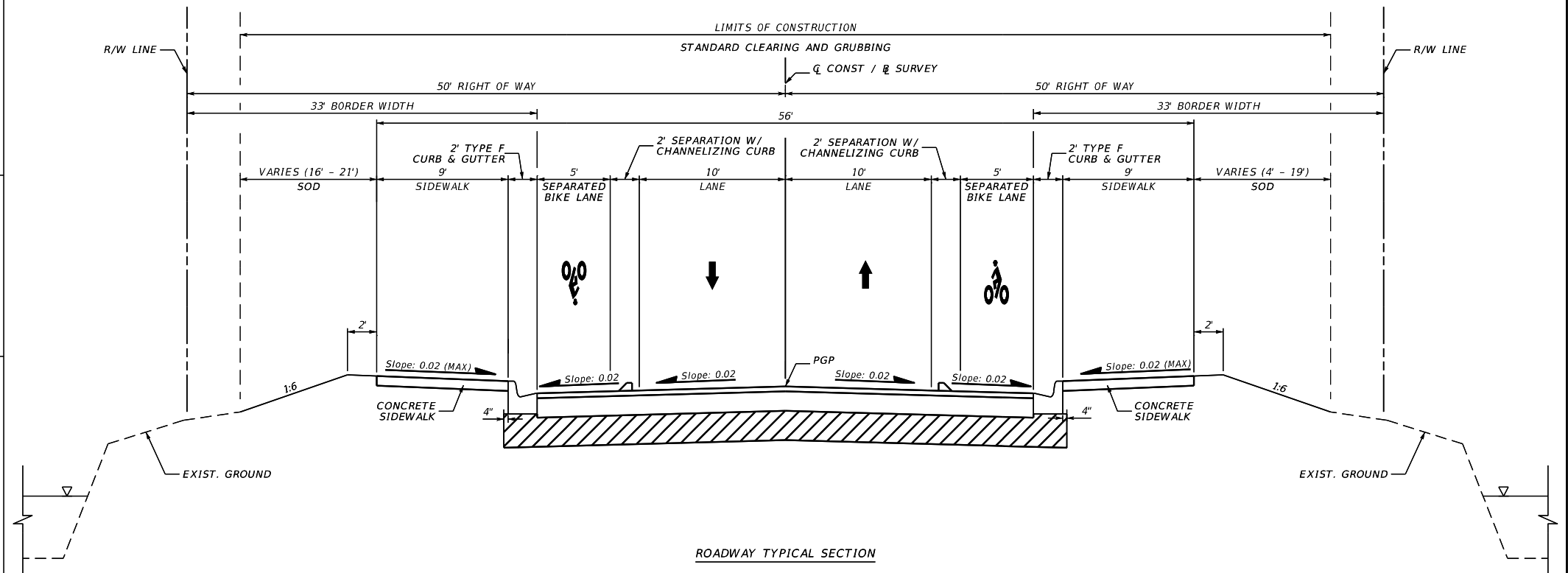
- (X) NEW CONSTRUCTION / RECONSTRUCTION
- () RESURFACING (LA FACILITIES)
- () RRR (ARTERIALS & COLLECTORS)

POTENTIAL EXCEPTIONS AND VARIATIONS RELATED TO TYPICAL SECTION:

DESIGN VARIATIONS

1. VERTICAL CURVE
2. LATERAL OFFSET TO TEMP. BARRIER

ROADWAY TYPICAL SECTION No. 4



ROADWAY TYPICAL SECTION

VENETIAN CAUSEWAY

SPOIL ISLAND #4, STA. 214+74.42 TO STA. 217+27.32 - FPID# 451396-2-58-01
 SPOIL ISLAND #4, STA. 217+27.32 TO STA. 217+57.32 - FPID# 451396-3-58-01

TRAFFIC DATA

CURRENT YEAR = 2024 AADT = 11,000
 ESTIMATED OPENING YEAR = 2026 AADT = 11,312
 ESTIMATED DESIGN YEAR = 2046 AADT = 14,968
 K = 9.0% D = 54.9% T = 3.4% (24 HOUR)
 DESIGN SPEED = 30 MPH
 POSTED SPEED = 25 MPH
 TARGET SPEED = N/A

12/21/2025 10:21:43 PM dcastillo L:\Project\21039_P01-01_Venetian_Causeway_Final_Design_At_Risk\CADD\roadway\TYPRD01.dgn

THE OFFICIAL RECORD OF THIS SHEET IS THE ELECTRONIC FILE DIGITALLY SIGNED AND SEALED UNDER RULE 61G15-23.004, F.A.C.

FINANCIAL PROJECT ID	SHEET NO.
422713-5-58-01	5

PROJECT CONTROLS

CONTEXT CLASSIFICATION

- () C1 : NATURAL () C3C : SUBURBAN COMM.
- () C2 : RURAL () C4 : URBAN GENERAL
- () C2T : RURAL TOWN () C5 : URBAN CENTER
- () C3R : SUBURBAN RES. () C6 : URBAN CORE
- () N/A : L.A. FACILITY

FUNCTIONAL CLASSIFICATION

- () INTERSTATE () MAJOR COLLECTOR
- () FREEWAY/EXPWY. () MINOR COLLECTOR
- () PRINCIPAL ARTERIAL () LOCAL
- (X) MINOR ARTERIAL

HIGHWAY SYSTEM

- () NATIONAL HIGHWAY SYSTEM
- () STRATEGIC INTERMODAL SYSTEM
- () STATE HIGHWAY SYSTEM
- (X) OFF-STATE HIGHWAY SYSTEM

ACCESS CLASSIFICATION

- () 1 - FREEWAY
- () 2 - RESTRICTIVE w/Service Roads
- () 3 - RESTRICTIVE w/660 ft. Connection Spacing
- () 4 - NON-RESTRICTIVE w/2640 ft. Signal Spacing
- () 5 - RESTRICTIVE w/440 ft. Connection Spacing
- () 6 - NON-RESTRICTIVE w/1320 ft. Signal Spacing
- (X) 7 - BOTH MEDIAN TYPES

CRITERIA

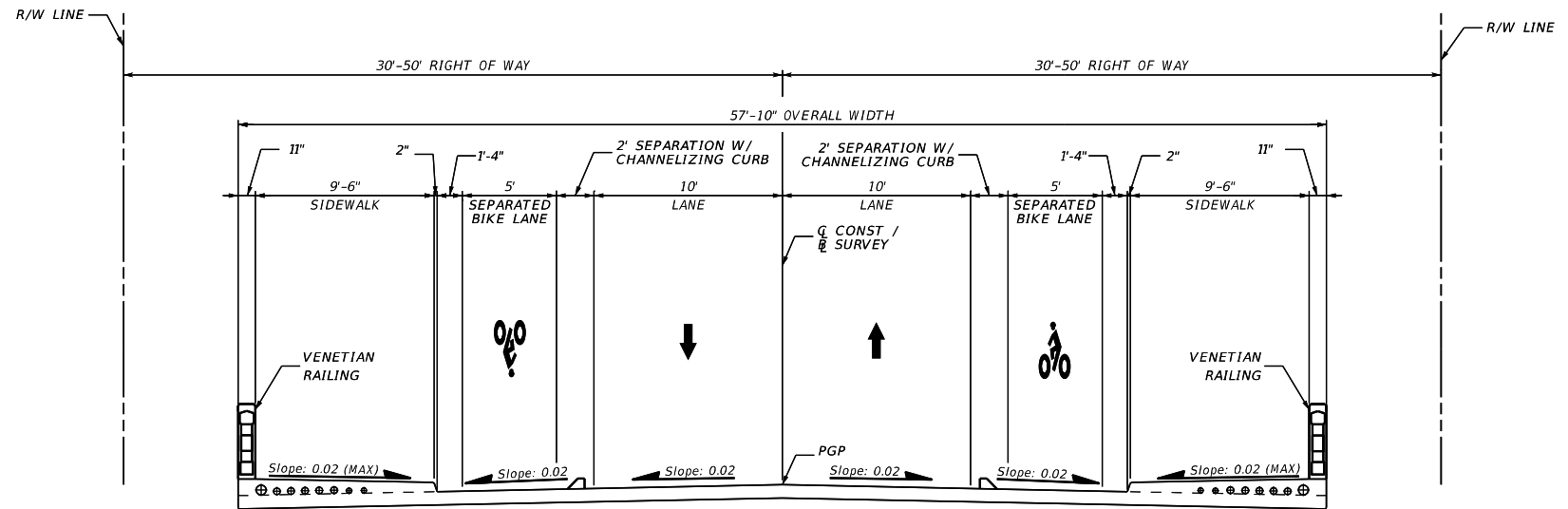
- (X) NEW CONSTRUCTION / RECONSTRUCTION
- () RESURFACING (LA FACILITIES)
- () RRR (ARTERIALS & COLLECTORS)

POTENTIAL EXCEPTIONS AND VARIATIONS RELATED TO TYPICAL SECTION:

DESIGN VARIATIONS

1. VERTICAL CURVE
2. LATERAL OFFSET TO TEMP. BARRIER
3. NON-STANDARD BRIDGE RAILING
4. VERTICAL CLEARANCE
5. PRESTRESSED BEAMS

BRIDGE TYPICAL SECTION No. 5



BRIDGE TYPICAL SECTION

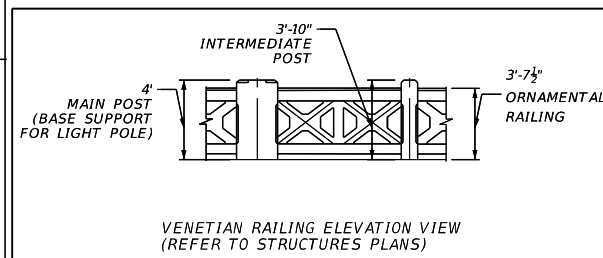
VENETIAN CAUSEWAY BRIDGES OVER BISCAYNE BAY

BRIDGE No. 2 (874460*)	STA. 154+39.86 TO STA. 156+54.52	- FPID# 4227136-4-58-01
BRIDGE No. 3 (874461*)	STA. 174+07.92 TO STA. 175+82.59	- FPID# 4227136-5-58-01
BRIDGE No. 4 (874463*)	STA. 178+44.34 TO STA. 180+19.01	- FPID# 4227136-6-58-01
BRIDGE No. 5 (874465*)	STA. 187+12.11 TO STA. 188+86.78	- FPID# 4227136-7-58-01
BRIDGE No. 6 (874466*)	STA. 191+41.70 TO STA. 193+16.37	- FPID# 4227136-8-58-01
BRIDGE No. 7 (874471*)	STA. 200+09.18 TO STA. 201+83.84	- FPID# 4227136-9-58-01
BRIDGE No. 8 (874472*)	STA. 204+43.01 TO STA. 206+17.68	- FPID# 451396-1-58-01
BRIDGE No. 9 (874473*)	STA. 213+11.51 TO STA. 214+74.42	- FPID# 451396-2-58-01
BRIDGE No. 10 (874474*)	STA. 217+57.32 TO STA. 218+39.15 AND STA. 219+90.15 TO STA. 220+71.98	- FPID# 451396-3-58-01
BRIDGE No. 11 (874477*)	STA. 223+53.67 TO STA. 225+17.34	- FPID# 451396-4-58-01
BRIDGE No. 12 (874481*)	STA. 237+98.13 TO STA. 242+72.80	- FPID# 451396-5-58-01

* EXISTING BRIDGE NUMBERS ARE SHOWN. NEW BRIDGE NUMBERS ARE TO BE DETERMINED.

TRAFFIC DATA

CURRENT YEAR = 2024 AADT = 11,000
 ESTIMATED OPENING YEAR = 2026 AADT = 11,312
 ESTIMATED DESIGN YEAR = 2046 AADT = 14,968
 K = 9.0% D = 54.9% T = 3.4 % (24 HOUR)
 DESIGN SPEED = 30 MPH
 POSTED SPEED = 25 MPH
 TARGET SPEED = N/A



VENETIAN RAILING ELEVATION VIEW (REFER TO STRUCTURES PLANS)

12/21/2025 10:21:43 PM dcastillo L:\Project\21Project\21039_PD01-01_Venetian_Causeway_Final_Design_At_Risk\CADD\roadway\TYPRD01.dgn

THE OFFICIAL RECORD OF THIS SHEET IS THE ELECTRONIC FILE DIGITALLY SIGNED AND SEALED UNDER RULE 61G15-23.004, F.A.C.

FINANCIAL PROJECT ID	SHEET NO.
422713-5-58-01	6

PROJECT CONTROLS

CONTEXT CLASSIFICATION

- () C1 : NATURAL () C3C : SUBURBAN COMM.
- () C2 : RURAL () C4 : URBAN GENERAL
- () C2T : RURAL TOWN () C5 : URBAN CENTER
- () C3R : SUBURBAN RES. () C6 : URBAN CORE
- () N/A : L.A. FACILITY

FUNCTIONAL CLASSIFICATION

- () INTERSTATE () MAJOR COLLECTOR
- () FREEWAY/EXPWY. () MINOR COLLECTOR
- () PRINCIPAL ARTERIAL () LOCAL
- (X) MINOR ARTERIAL

HIGHWAY SYSTEM

- () NATIONAL HIGHWAY SYSTEM
- () STRATEGIC INTERMODAL SYSTEM
- () STATE HIGHWAY SYSTEM
- (X) OFF-STATE HIGHWAY SYSTEM

ACCESS CLASSIFICATION

- () 1 - FREEWAY
- () 2 - RESTRICTIVE w/Service Roads
- () 3 - RESTRICTIVE w/660 ft. Connection Spacing
- () 4 - NON-RESTRICTIVE w/2640 ft. Signal Spacing
- () 5 - RESTRICTIVE w/440 ft. Connection Spacing
- () 6 - NON-RESTRICTIVE w/1320 ft. Signal Spacing
- (X) 7 - BOTH MEDIAN TYPES

CRITERIA

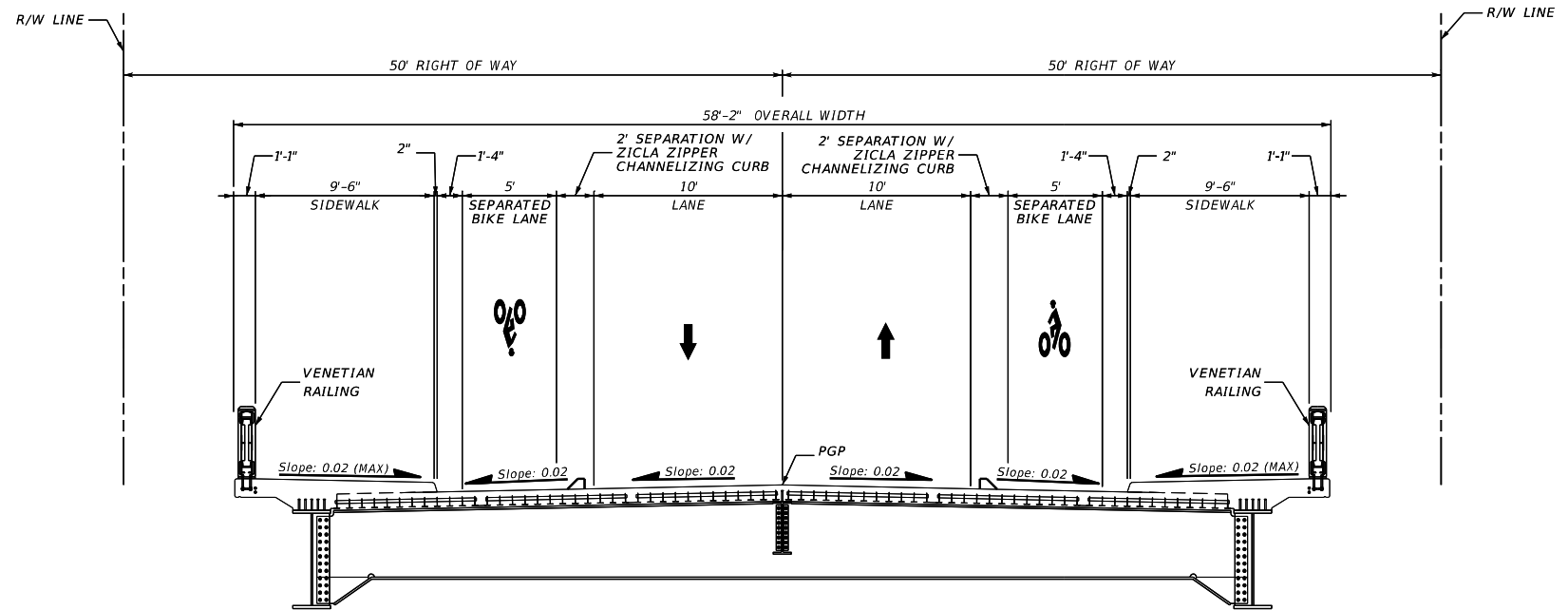
- (X) NEW CONSTRUCTION / RECONSTRUCTION
- () RESURFACING (LA FACILITIES)
- () RRR (ARTERIALS & COLLECTORS)

POTENTIAL EXCEPTIONS AND VARIATIONS RELATED TO TYPICAL SECTION:

DESIGN VARIATIONS

1. NON-STANDARD BRIDGE RAILING
2. VERTICAL CLEARANCE

BASCULE BRIDGE TYPICAL SECTION No. 6



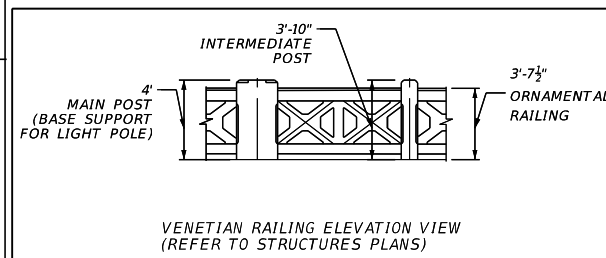
BASCULE BRIDGE TYPICAL SECTION

VENETIAN CAUSEWAY BRIDGE OVER BISCAYNE BAY

BRIDGE No. 10 (874474*), STA. 218+39.15 TO STA. 219+90.15 - FPID# 451396-3-58-01
 * EXISTING BRIDGE NUMBER IS SHOWN. NEW BRIDGE NUMBER IS TO BE DETERMINED.

TRAFFIC DATA

CURRENT YEAR = 2024 AADT = 11,000
 ESTIMATED OPENING YEAR = 2026 AADT = 11,312
 ESTIMATED DESIGN YEAR = 2046 AADT = 14,968
 K = 9.0% D = 54.9% T = 3.4 % (24 HOUR)
 DESIGN SPEED = 30 MPH
 POSTED SPEED = 25 MPH
 TARGET SPEED = N/A



VENETIAN RAILING ELEVATION VIEW
 (REFER TO STRUCTURES PLANS)

12/21/2025 10:21:43 PM dcastillo L:\Project\21Project\21039_PD01-01_Venetian Causeway_Final Design_At Risk\CADD\roadway\TYPRD01.dgn

THE OFFICIAL RECORD OF THIS SHEET IS THE ELECTRONIC FILE DIGITALLY SIGNED AND SEALED UNDER RULE 61G15-23.004, F.A.C.

FINANCIAL PROJECT ID	SHEET NO.
422713-5-58-01	7