



YOUR VOICE, IN ACTION!

FIRE STATION 1 – HPB PRESENTATION 2-10-2026

HPB NUMBER: HPB25-0684

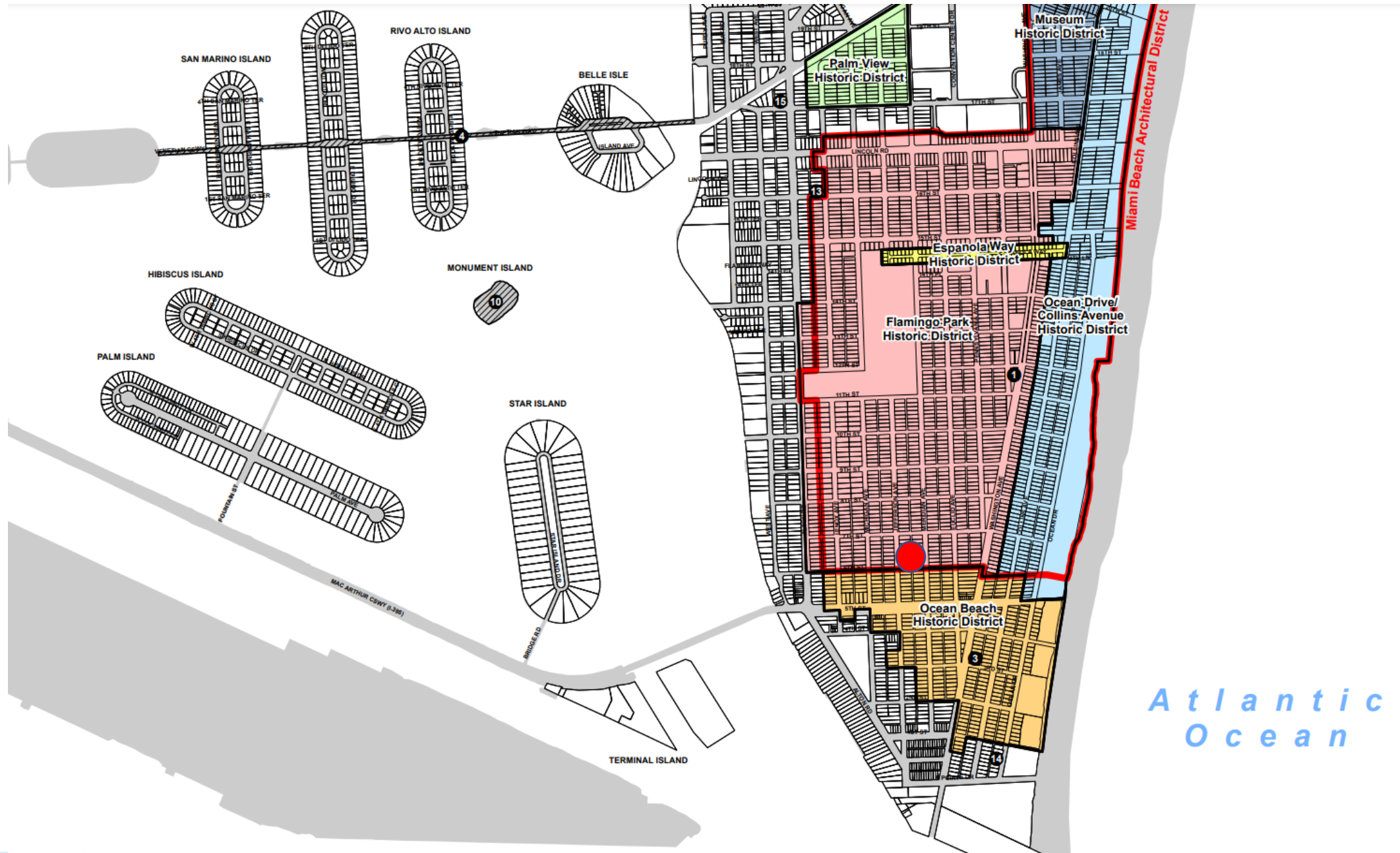
PREVIOUS HPB NUMBER: HPB21-0483

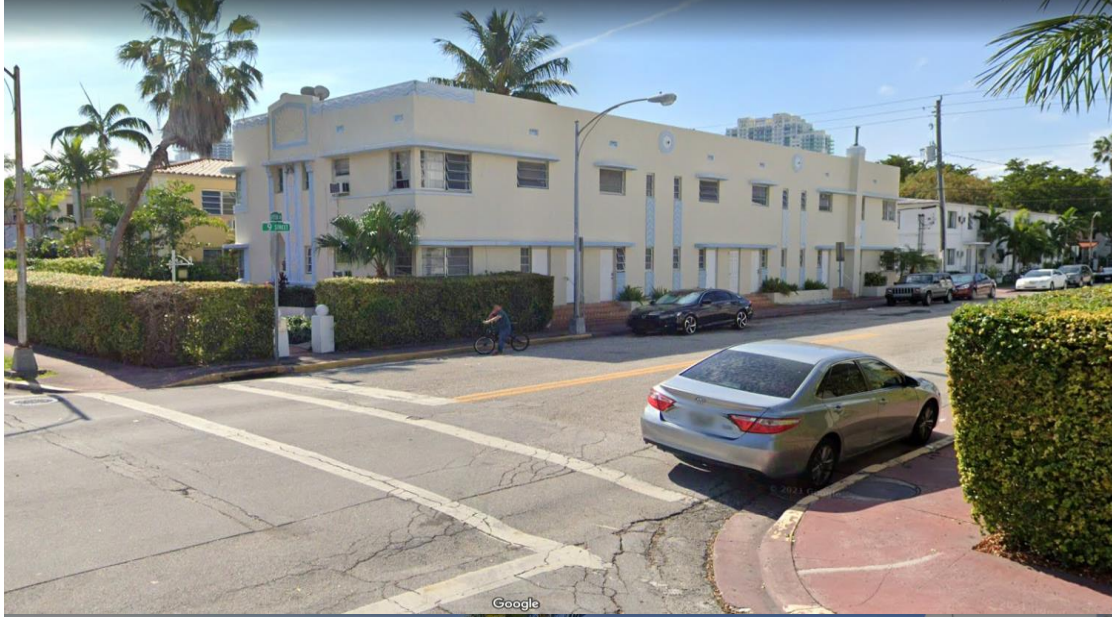
(Approved 03/08/22)



MIAMI BEACH

URBAN | CONTEXT

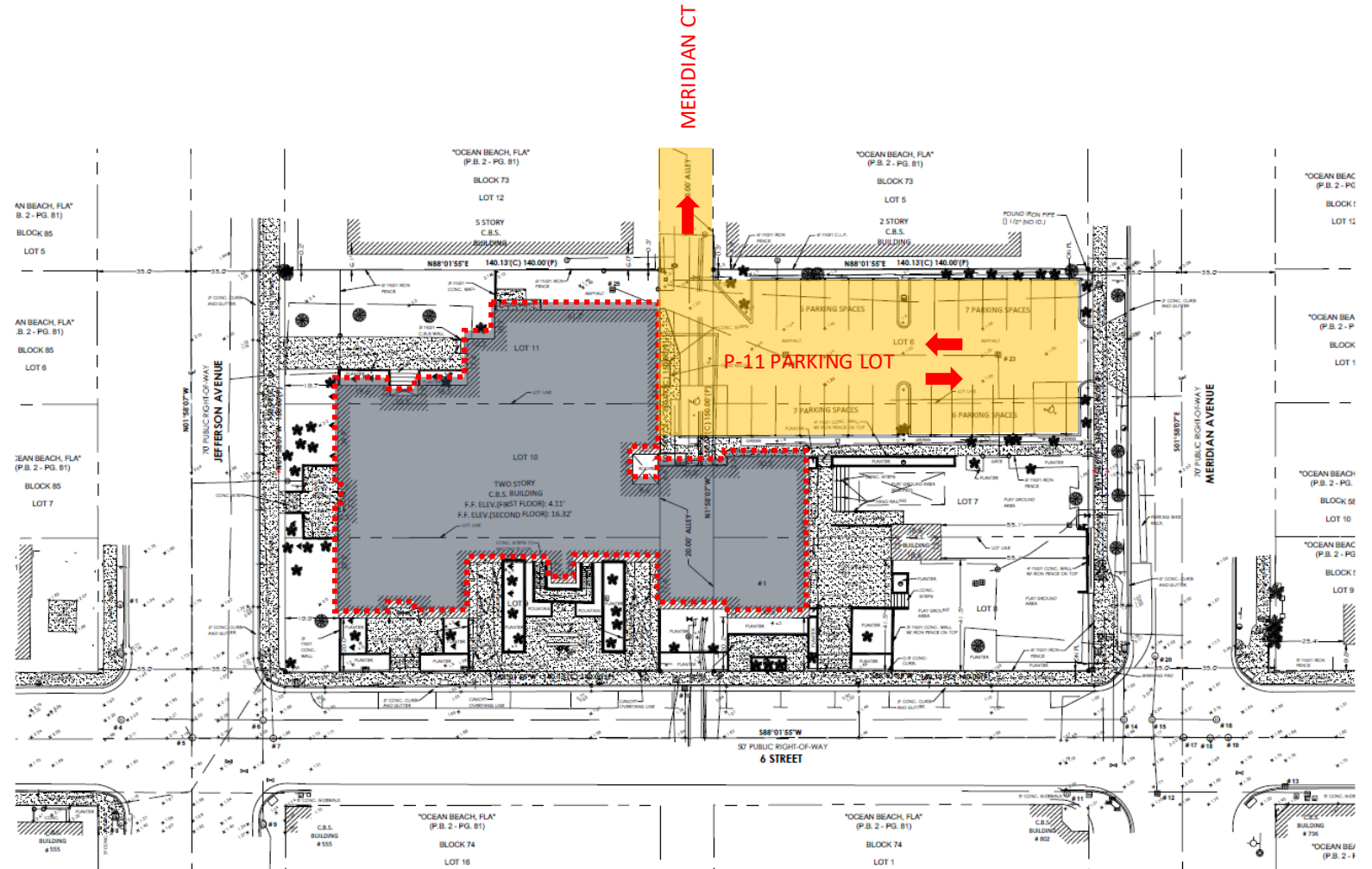


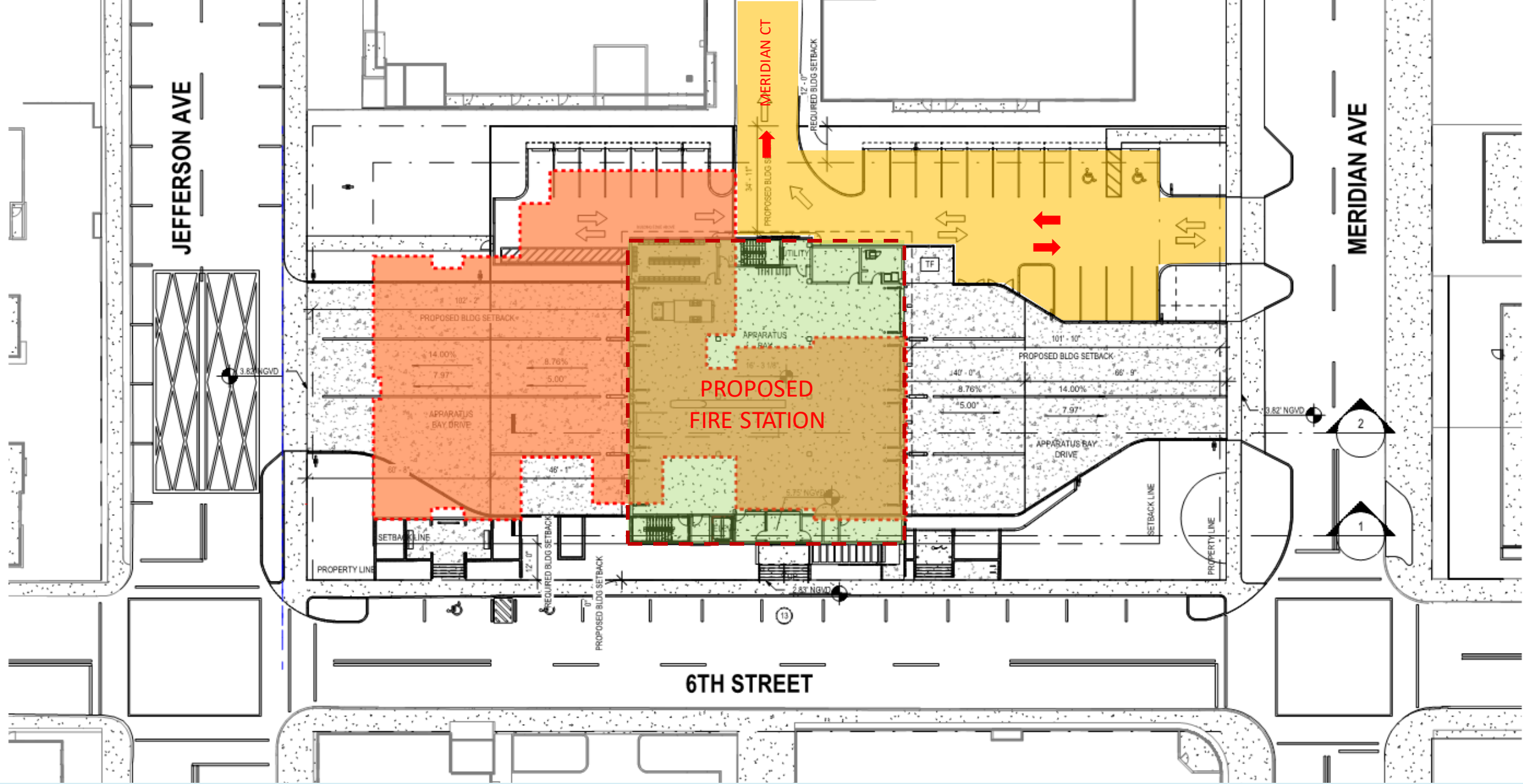


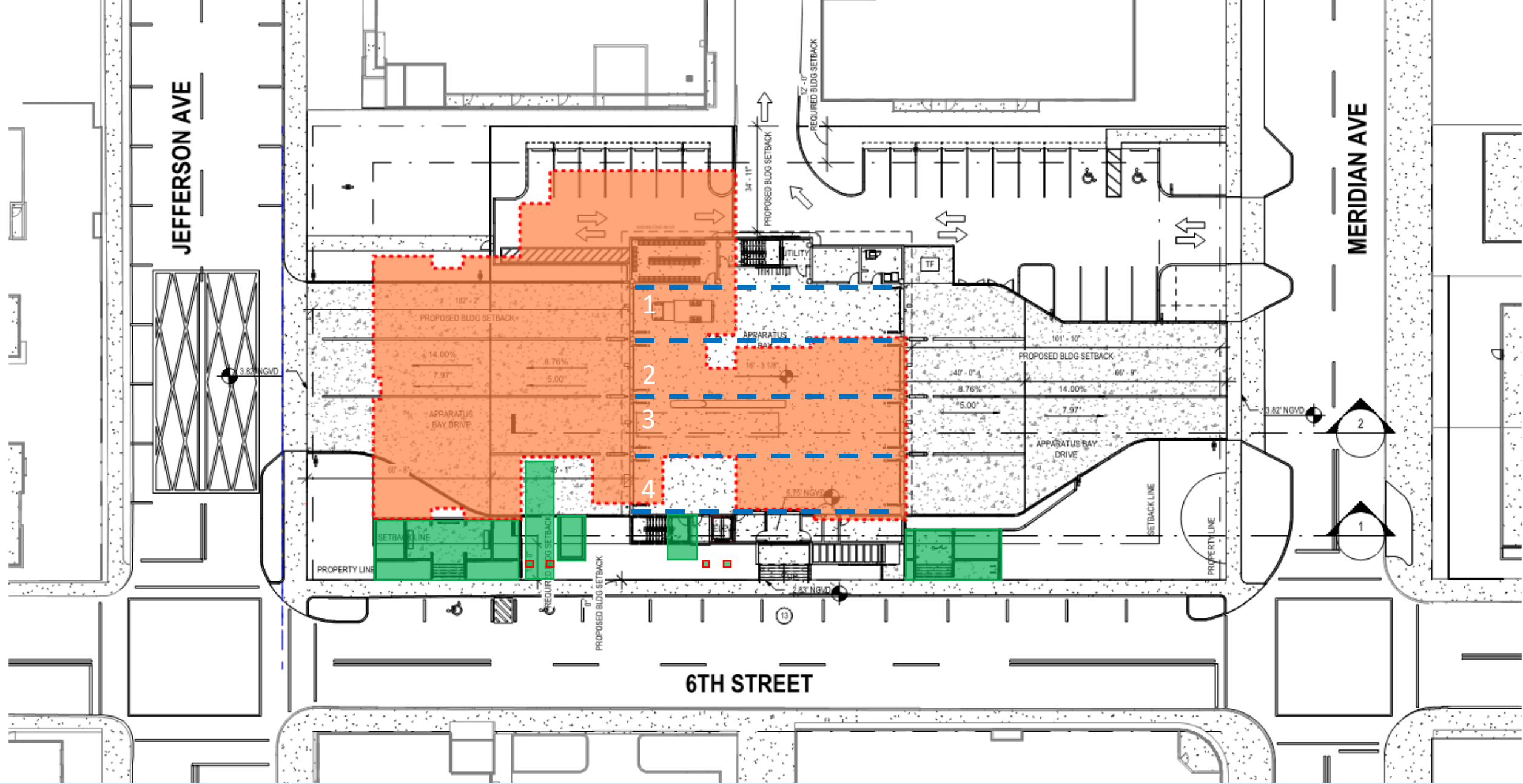
SITE

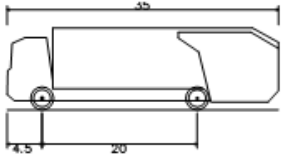
DESIGN

- Address: 833 6th Street
- Ownership: City of Miami Beach
- Existing site of the South Shore Community Center
- Frontage on 6th Street, Jefferson Avenue and Meridian Avenue
- 1 acre property
- Surface Parking Lot P-11 located on site, 27 spaces with **required** access to Meridian Court vehicular traffic



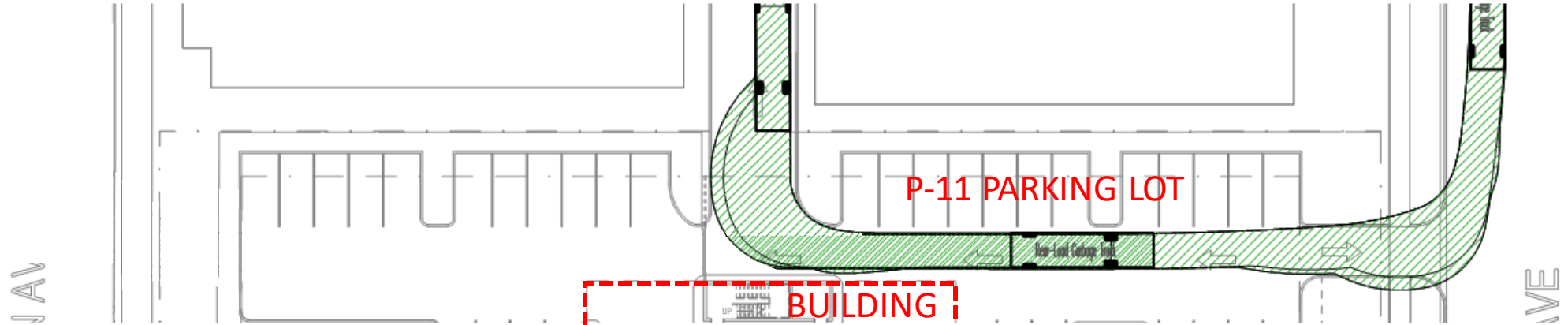






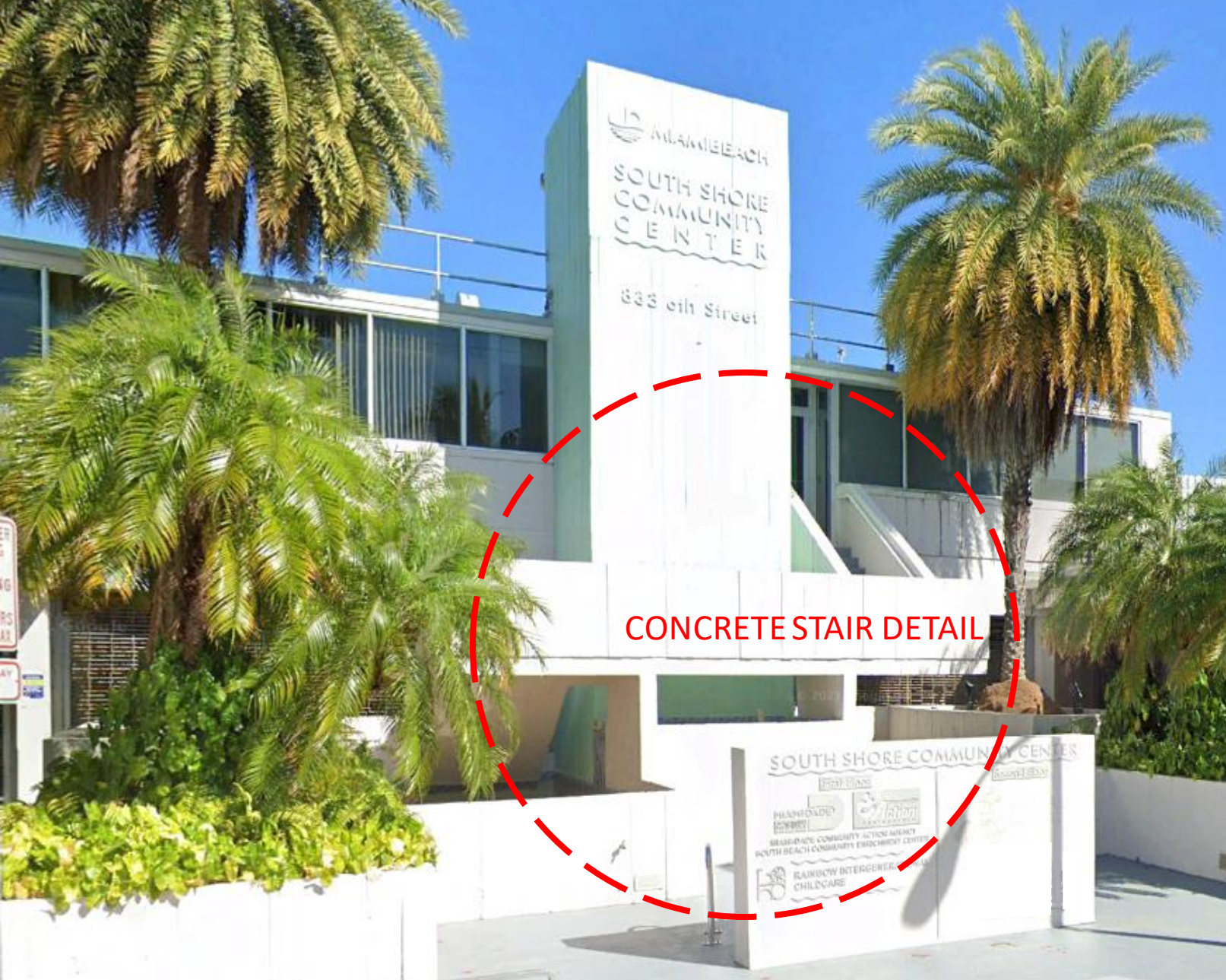
Rear-Load Garbage Truck
 Overall Length 35.000ft
 Overall Width 8.375ft
 Overall Body Height 10.546ft
 Min Body Ground Clearance 1.000ft
 Track Width 8.375ft
 Lock-to-lock time 6.00s
 Curb to Curb Turning Radius 29.300ft

MERIDIAN CT
REAR-LOAD GARBAGE TRUCK



- vehicular maneuvering path for trash collection and emergency access

DESIGN ELEMENTS



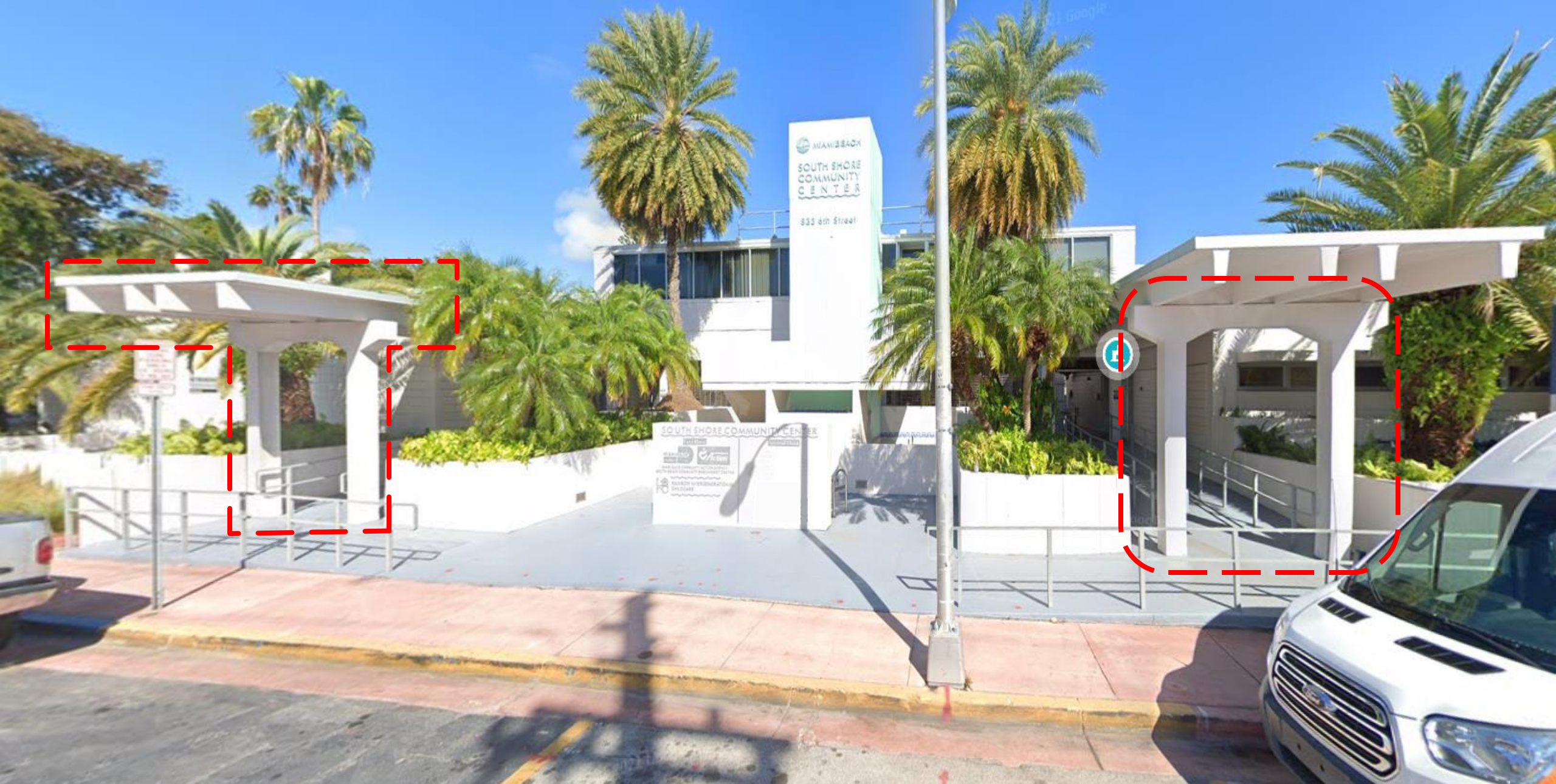
EXISTING BUILDING DESIGN ELEMENTS TO BE INCORPORATED TO THE NEW FIRE STATION

- Concrete stairs details
- Stacked bond faced block finish
- New cast-in-place concrete planters to match existing
- Folding concrete canopy over main entrance
- Existing concrete double tee canopy, and concrete columns to be relocated and repurposed into a small park pavilion along the west side of 6th street
- Existing cast-in-place concrete planters that don't overlap with the required building footprint and vehicular ramp will be maintained



EXISTING PORTIONS OF THE BUILDING TO REMAIN

FS01 - MIAMIBEACH



EXISTING PORTIONS OF THE BUILDING TO BE REPURPOSED

FS01 - MIAMIBEACH



EXISTING BUILDING DETAIL INCORPORATED INTO THE NEW DESIGN

FS01 - MIAMIBEACH



EXISTING BUILDING DETAIL INCORPORATED INTO THE NEW DESIGN

FS01 - MIAMIBEACH



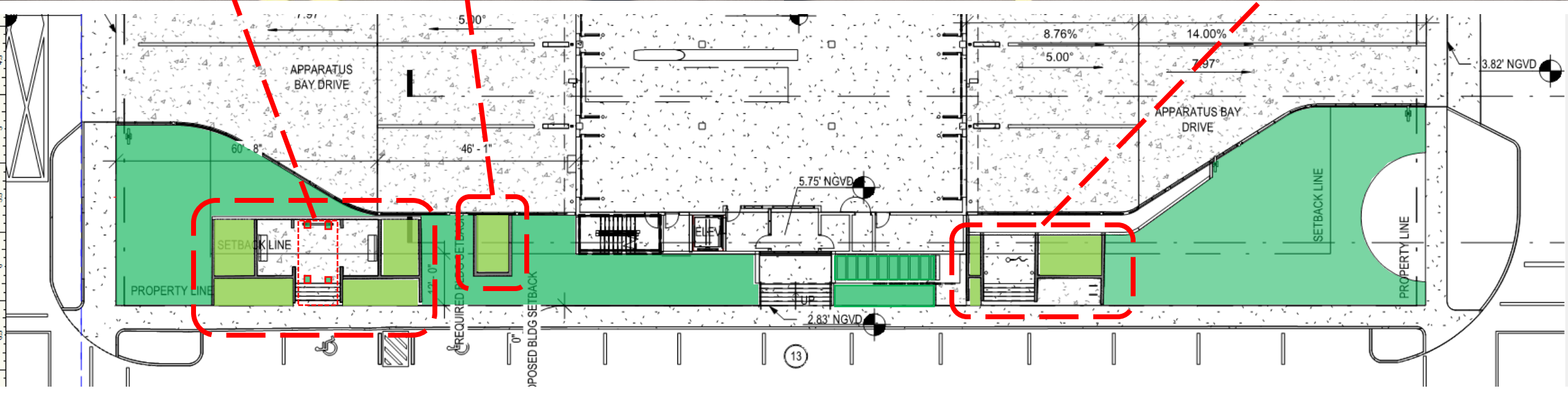
NO
PARKING
ANY
TIME
←



MIAMI BEACH
SOUTH SHORE
COMMUNITY
CENTER
812 5th Street

EXISTING BUILDING DETAIL INCORPORATED INTO THE NEW DESIGN

FS01 - MIAMIBEACH



EXISTING BUILDING ELEMENTS TO REMAIN

FS01 - MIAMIBEACH

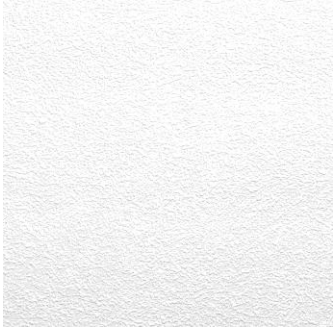
FIRE STATION-01 DESIGN

DESIGN ELEMENTS

- Asymmetry
- Floating concrete planes
- Exposed concrete block and stucco
- Boxed windows
- Built-in concrete planters
- Brise-soleils (vertical and horizontal)
- Floating concrete stairs
- Individually mounted building sign characters



MATERIAL PALETTE



Painted Stucco



Planter design inspired by existing building design



Aluminum Fins



Exterior Pavers
Artistic Shellock Ivory



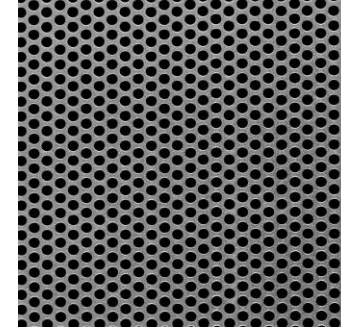
Ground Face Stacked Bond
Echelon Trendstone
Color: Graystone



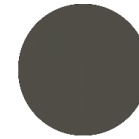
Aluminum Horizontal Screen
For Stair Enclosure



Seashell Concrete for
Apparatus Bay Ramps



Graphic Art for Perforated
Parking Screen



Storefronts and Railings
Kynar 500 Charcoal Grey



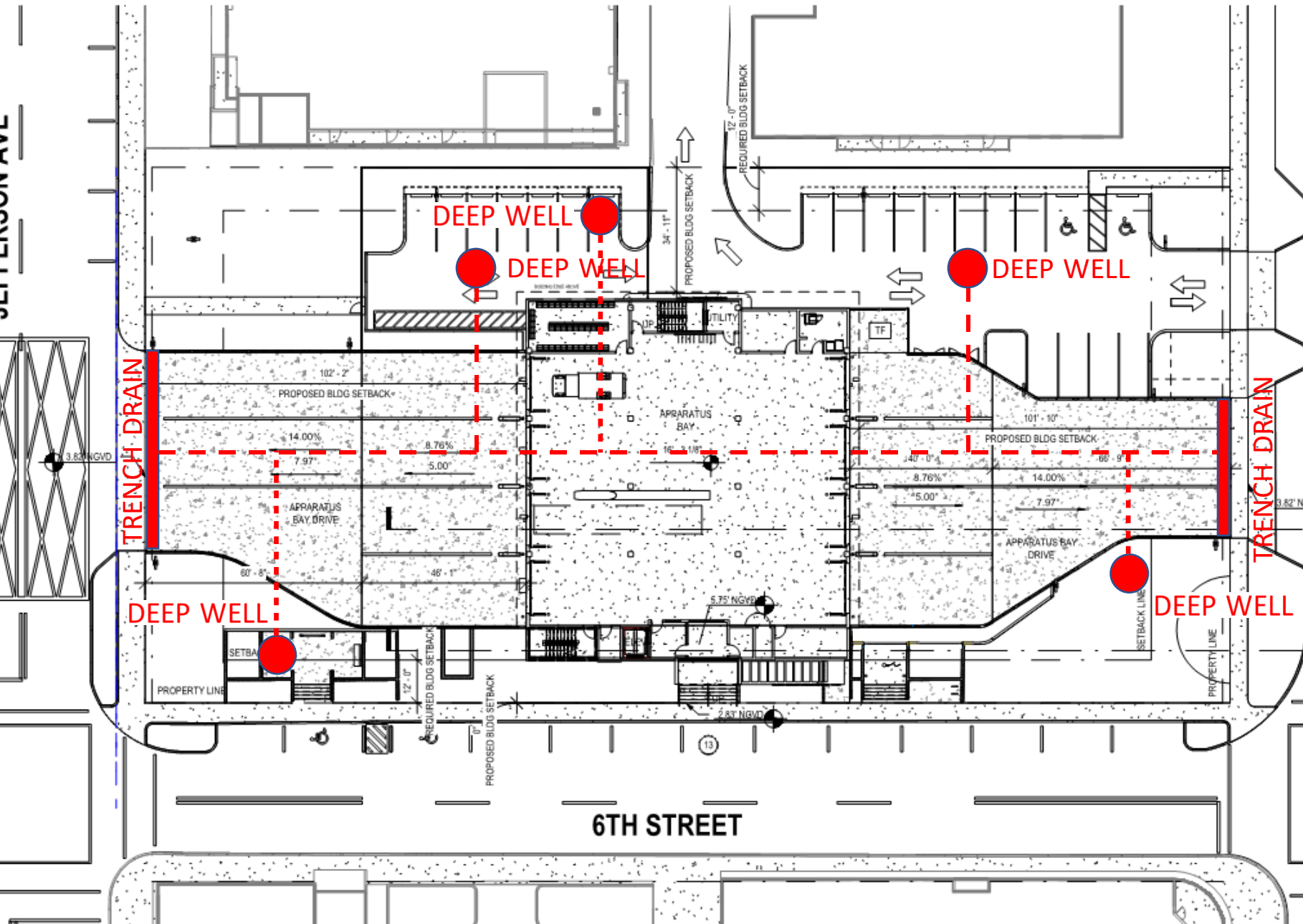
Roof Equipment Screen



Four-Fold Bay Doors

Site Design

- Stormwater that sheet flows on ramp is collected at the bottom landing via a trench drain.
- All the collected water is piped to the proposed deep wells as shown.





PROPOSED DESIGN - VIEW FROM 6TH STREET

FS01 - MIAMIBEACH



PROPOSED DESIGN - VIEW FROM 6TH STREET

FS01 - MIAMIBEACH



PROPOSED DESIGN - VIEW FROM 6TH STREET

FS01 - MIAMIBEACH



PROPOSED DESIGN – VIEW OF PROPOSED PUBLIC PAVILION

FS01 - MIAMIBEACH



PROPOSED DESIGN – VIEW OF PROPOSED PUBLIC PAVILION



PROPOSED DESIGN – OUTDOOR FOYER WITH PLANTERS AND TRELLIS

FS01 - MIAMIBEACH





PROPOSED DESIGN – FOLDING CONCRETE EYEBROW @ MAIN ENTRY

FS01 - MIAMIBEACH



PROPOSED DESIGN – VIEW FROM JEFFERSON

FS01 - MIAMIBEACH



PROPOSED DESIGN – VIEW FROM JEFFERSON



PROPOSED DESIGN – BIRDSEYE VIEW FROM NORTHEAST

FS01 - MIAMIBEACH



PROPOSED DESIGN – NORTH ELEVATION – COVERED PARKING ENTRY / EXIT

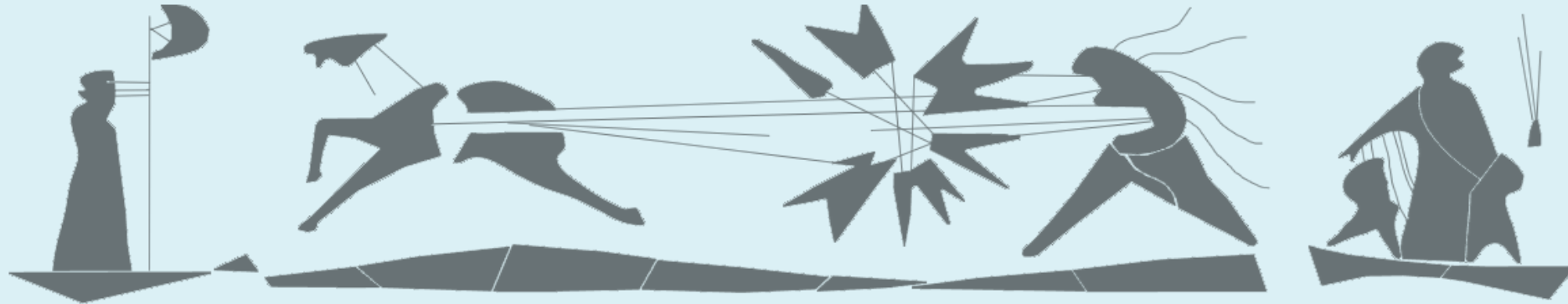
FS01 - MIAMIBEACH







YOUR VOICE, IN ACTION!



APOLLO DRIVING THE SUN CHARIOT ACROSS THE SKY

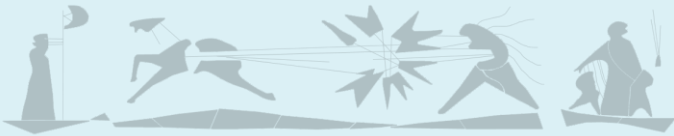
PREVIOUS HPB NUMBER: HPB22-0550 (Approved 07/11/23)

833 6th ST, MIAMI BEACH 33139

February 10, 2026



YOUR VOICE, IN ACTION!



THE ARTIST:

JACK STEWART (1926-2005) was a painter, muralist, designer, in New York City. After serving in World War II, he enrolled at Yale University as a sculpture student, but soon switched to the painting department. After graduation, Stewart began receiving mural commissions and enrolled in classes at Columbia University School of Architecture (1951-1953). His interest in architecture was tied to understanding how to work effectively with architects on mural projects.





YOUR VOICE, IN ACTION!



STEWART'S WORK:

Stewart created murals in ceramic tile, mixed media and stained glass. In addition to mosaic murals, he designed tables with mosaic tops. As an outgrowth of his mosaic work, Stewart developed a technique for laminating stained glass onto plate glass that, by eliminating the need for lead, opened new design possibilities. Mural commissions included work for Hamilton Hotel in Chicago, Versailles Hotel in Miami Beach, Public School 28 in New York City, and several ocean liners.



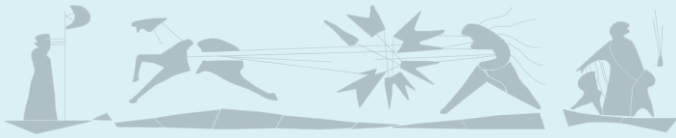
Mural in Public School 28, NY



Tables with beige mosaic tile tops resting on patinated brass frames with four square legs.



YOUR VOICE, IN ACTION!



THE HISTORY - APOLLO DRIVING THE SUN CHARIOT ACROSS THE SKY

- The mural was commissioned to Jack Stewart in the **mid-1950s** to embellish the addition to the historic Versailles Hotel in Miami Beach.
- In **2014**, Historic Preservation Board approved the demolition of south addition including the Mural.
- **January 25, 2015**, the Apollo Mural was removed from the Versailles Hotel and relocated to a storage facility.
- The developer in **2020** offered the Mural to the city under HPB number HPB - HPB20-0441 for installation on a city owned facility.





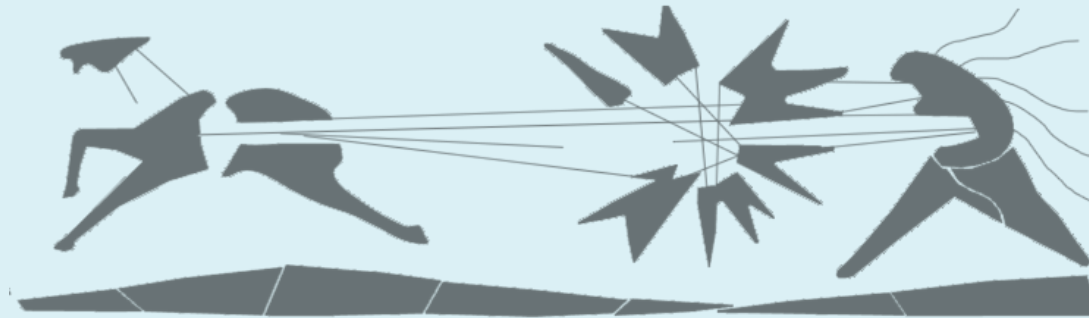
YOUR VOICE, IN ACTION!

THE MURAL

- Jack Stewart Apollo is an 86 ft wide mosaic mural.
- Stewart was a Symbolist, photographer and New York City graffiti artist.
- The glass mosaic tiles were painstakingly attached to aluminum frames in Stewart's New York studio (Mid-1950s).
- The mural depicts Apollo, of Greek mythology, racing his sun chariot towards Artemis (known as Diana in Roman mythology). On the right are figures identified as Leto (known as Latona in Roman mythology) — the mother of Apollo and Artemis — alongside her young twins.



Artemis (known as Diana in Roman mythology).



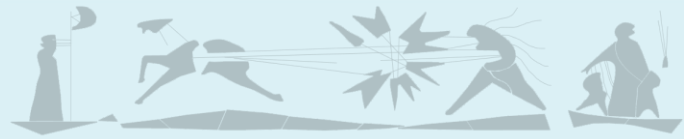
Apollo driving the sun chariot across the sky



Leto (known as Latona in Roman mythology)



YOUR VOICE, IN ACTION!



PROPOSED LOCATION

- The Apollo Mural will be placed West side of new Miami Beach Fire Station #1 (833 6th St, Miami Beach 33139)





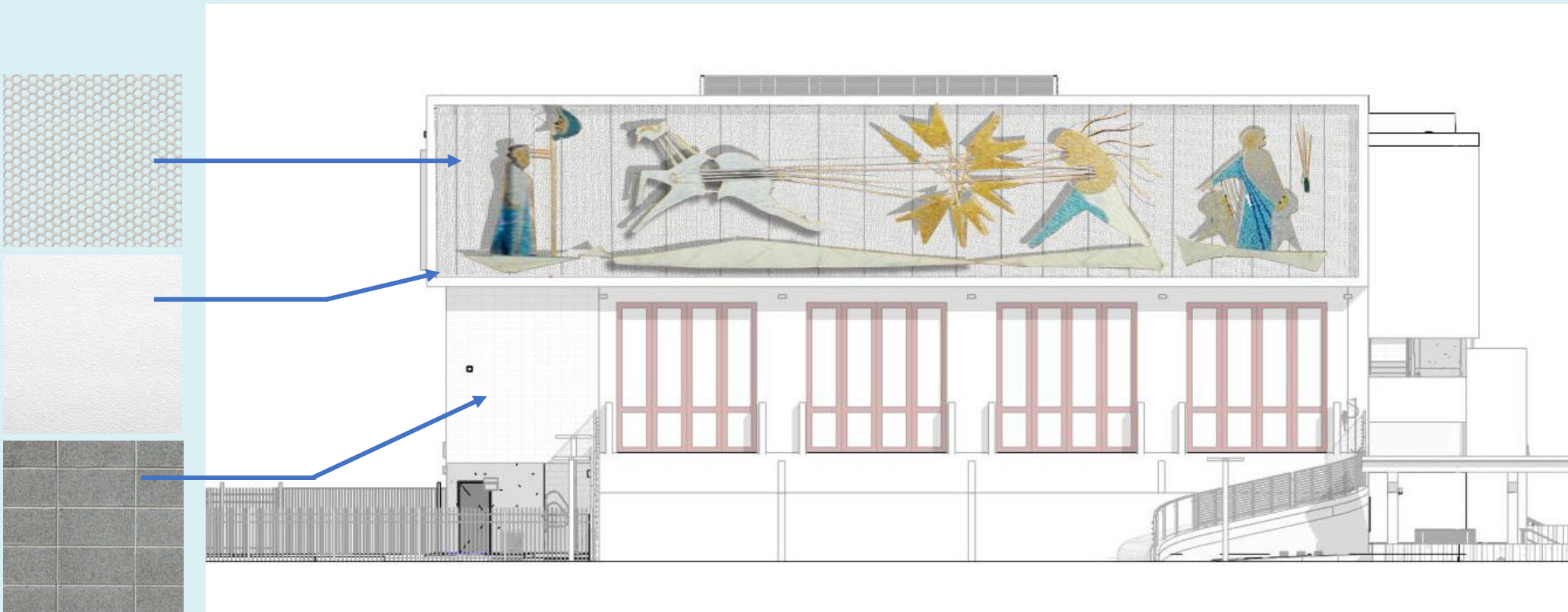
YOUR VOICE, IN ACTION!

MATERIALITY

50% PERFORATED ALUMINUM
SCREEN – POWDER COATED
WARM GRAY.

PAINTED STUCCO –
LIMESTONE FINISH –
COLOR: SW EIDER WHITE

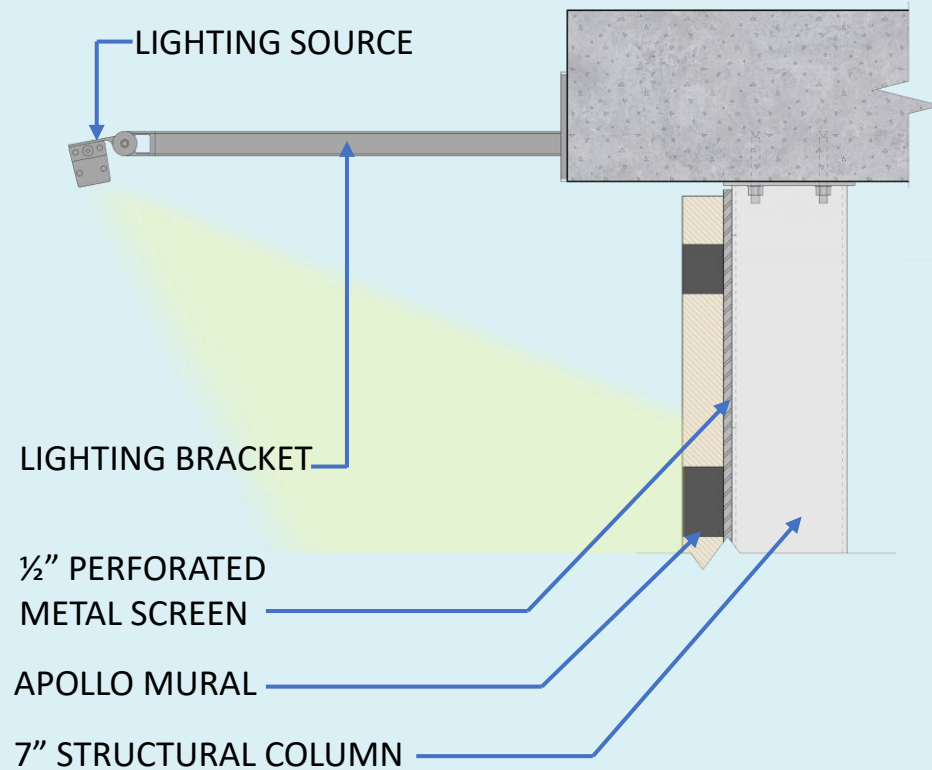
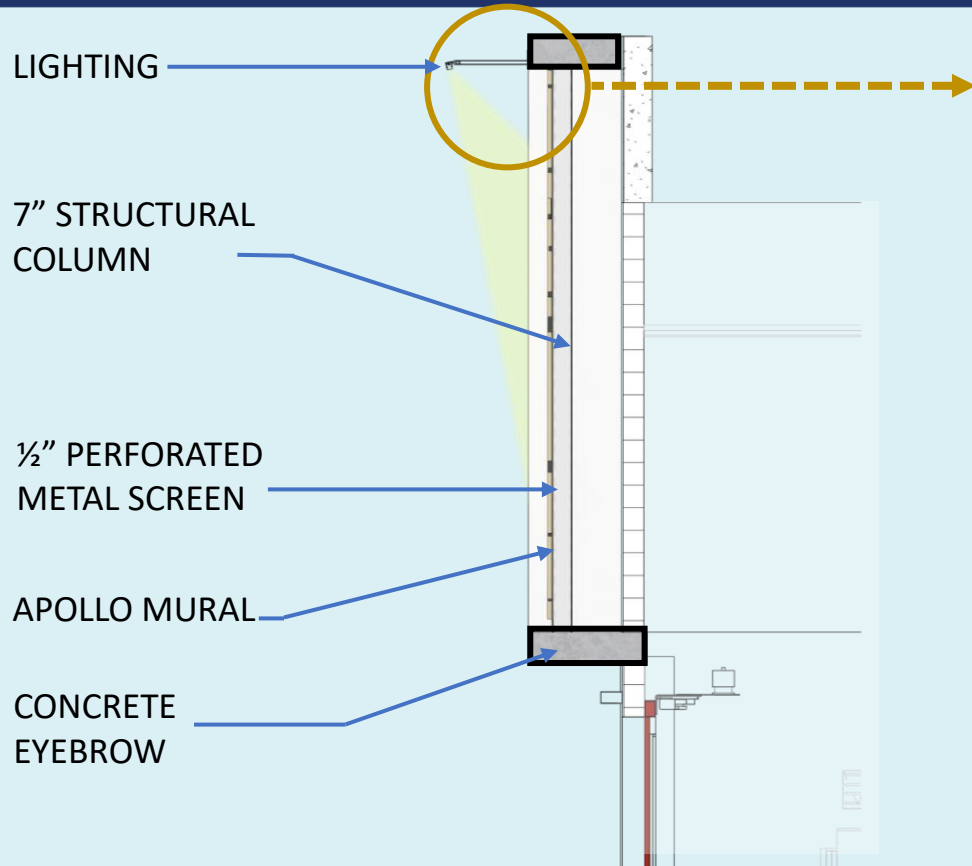
GROUND FACE BLOCK
VENEER





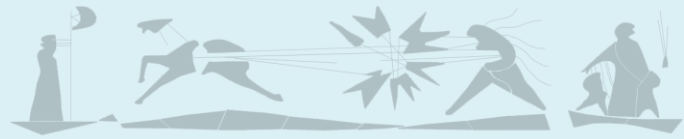
YOUR VOICE, IN ACTION!

SECTION & DETAIL THROUGH WEST FACADE





YOUR VOICE, IN ACTION!



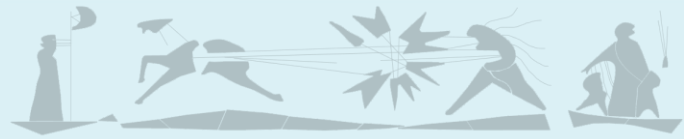
LIGHTING

- Lighting schedule to be controlled as needed.





YOUR VOICE, IN ACTION!



SUNSET VIEW

