

1 MARINA PAVILION REAR ELEVATION
1/16" = 1'-0"

MATERIAL LEGEND - MARINA PAVILION



- 01 STUCCO FINISH TO MATCH LA PERLA STONE, AT EXTERIOR WALLS
- 02 BRANCO CLASSICO LIMESTONE, AT EXTERIOR FLOOR, STAIRS, RAMPS, & OWNER'S POOL
- 03 BRONZE METAL ACCENT, PEARL GOLD (RAL 1036) METAL FINISH TO DOORS, WINDOW FRAMES & GATES
- 04 CLEAR, NON-TINTED, LOW-IRON GLASS W/ LAYER OF UV PROTECTION
- 05 GRC PANEL, COLOR TO MATCH LA PERLA STONE, AT OVERHANGS
- 06 SUKABUMI TILES, POOL

BMA Project No. 2025.05.1



P: 631.537.7277
3401 N. Miami Ave, Suite 202 Miami, FL 33127

Owner's Representative / PM:
Coastal Group Marinas
Holtec Center, 1001 N. US Hwy One,
Suite 710 Jupiter, FL 33477
P: 561.385.1429

Design Architect:
Winch Design
Parklife House, 133 Deodar Road
London SW15 2NU
P: +44 (0) 20 8392 8400

Structural Engineer:
TYLin Group
32 Old Slip 10th and 17th Floors
New York, NY 10005
P: 212.228.0662

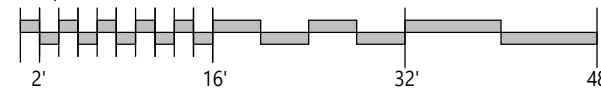
Landscape Design Architect:
Wirtz International Landscape Architects
Botermerkijk 464 2900 Schoten België
P: +32 (0) 3 680 13 22

Landscape Architect of Record:
Christopher Cawley Landscape Architecture
7245 NE 4th Ave, Suite 104
Miami, FL 33138
P: 786.536.2961

MEPS Engineer:
Hanington Engineering Consultants
233 Mount Airy Road, Suite 202
Basking Ridge, NJ 07920
P: 973.691.0602

Civil Engineer:
Kimley Horn
2 Alhambra Plaza, Suite 500
Coral Gables, FL 33134
P: 305.673.2025

Graphic Scale: 1 inch = 16 feet



No.	Issue	Date	COMB To
DRB26-1176	04-03-2026 FINAL SUBMITTAL	04/05/26	COMB

Scale
1/16" = 1'-0"
MARINA PAVILION REAR
ELEVATION

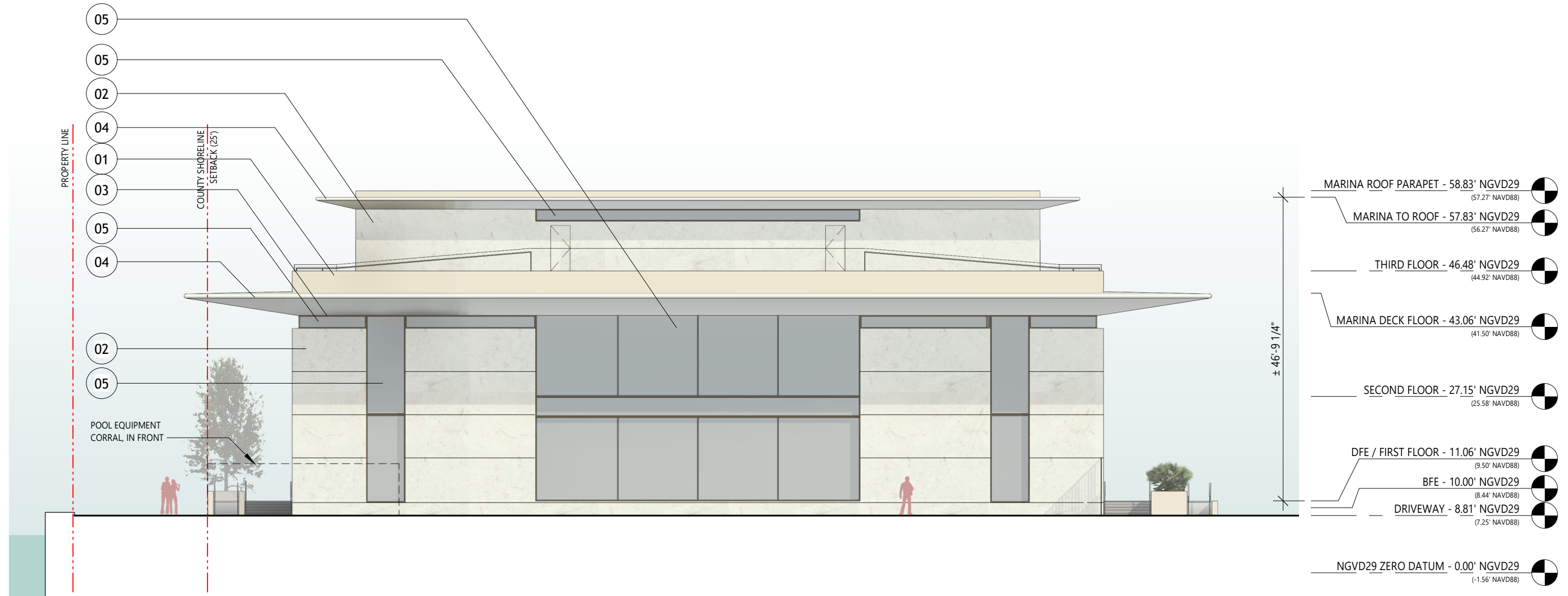
DRB26-1176: 04-03-2026
FINAL SUBMITTAL

Drawn By
GS

Dwg. no.

A45

PREVIOUSLY APPROVED



1 PARINA PAVILION REAR ELEVATION
1/16" = 1'-0"

MATERIAL LEGEND - MARINA PAVILION



- 01 BRANCO LIMESTONE, HONED, AT PODIUMS AND POOL
- 02 PERLA LIMESTONE, HONED, AT EXTERIOR WALLS
- 03 PEARL GOLD (RAL 1036) METAL FINISH TO DOORS, WINDOW FRAMES & GATES
- 04 GRC LIMESTONE TO ROOFS & EXTERIOR SOFFITS
- 05 CLEAR, NON-TINTED, LOW-IRON GLASS W/ LAYER OF UV PROTECTION
- 06 TIMBER SLATTED SLIDING SCREEN

BMA Project No. 2025.05.1



Project Management:
Envoie Projects
220 East 42nd Street, Suite 408
New York, NY 10017
P: 646.395.5499

Owner's Representative / PM:
Coastal Group Marinas
Holtec Center, 1001 N. US Hwy One,
Suite 710 Jupiter, FL 33477
P: 561.385.1429

Design Architect:
Winch Design
Parklife House, 133 Deodar Road
London SW15 2NU
P: +44 (0) 20 8392 8400

Structural Engineer:
TYLin Group
32 Old Slip 10th and 17th Floors
New York, NY 10005
P: 212.228.0662

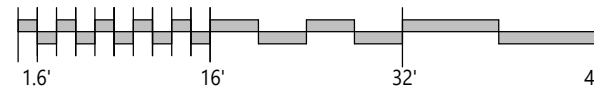
Landscape Design Architect:
Wirtz International Landscape Architects
Botermelkdijk 464 2900 Schoten België
P: +32 (0) 3 680 13 22

Landscape Architect of Record:
Christopher Cawley Landscape Architecture
7245 NE 4th Ave, Suite 104
Miami, FL 33138
P: 786.536.2961

MEPS Engineer:
Hanington Engineering Consultants
233 Mount Airy Road, Suite 202
Basking Ridge, NJ 07920
P: 973.691.0602

Civil Engineer:
Kimley Horn
2 Alhambra Plaza, Suite 500
Coral Gables, FL 33134
P: 305.673.2025

Graphic Scale: 1 inch = 16 feet



No.	Issue	Date	To
DRB25-1121-09-07-2025	FINAL SUBMITTAL	09/07/2025	MB

Scale
1/16" = 1'-0"
MARINA PAVILION REAR
ELEVATION
Dwg. no.
A45



1 MARINA PAVILION LEFT ELEVATION
1/16" = 1'-0"



MATERIAL LEGEND - MARINA PAVILION

- 01 STUCCO FINISH TO MATCH LA PERLA STONE, AT EXTERIOR WALLS
- 02 BRANCO CLASSICO LIMESTONE, AT EXTERIOR FLOOR, STAIRS, RAMPS, & OWNER'S POOL
- 03 BRONZE METAL ACCENT, PEARL GOLD (RAL 1036) METAL FINISH TO DOORS, WINDOW FRAMES & GATES
- 04 CLEAR, NON-TINTED, LOW-IRON GLASS W/ LAYER OF UV PROTECTION
- 05 GRC PANEL, COLOR TO MATCH LA PERLA STONE, AT OVERHANGS
- 06 SUKABUMI TILES, POOL

BMA Project No. 2025.05.1



Owner's Representative / PM:
Coastal Group Marinas
Holtec Center, 1001 N. US Hwy One,
Suite 710 Jupiter, FL 33477
P: 561.385.1429

Design Architect:
Winch Design
Parklife House, 133 Deodar Road
London SW15 2NU
P: +44 (0) 20 8392 8400

Structural Engineer:
TYLin Group
32 Old Slip 10th and 17th Floors
New York, NY 10005
P: 212.228.0662

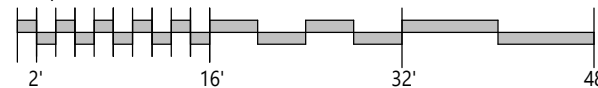
Landscape Design Architect:
Wirtz International Landscape Architects
Botermelkdijk 464 2900 Schoten België
P: +32 (0) 3 680 13 22

Landscape Architect of Record:
Christopher Cawley Landscape Architecture
7245 NE 4th Ave, Suite 104
Miami, FL 33138
P: 786.536.2961

MEPS Engineer:
Hanington Engineering Consultants
233 Mount Airy Road, Suite 202
Basking Ridge, NJ 07920
P: 973.691.0602

Civil Engineer:
Kimley Horn
2 Alhambra Plaza, Suite 500
Coral Gables, FL 33134
P: 305.673.2025

Graphic Scale: 1 inch = 16 feet



No.	Issue	Date	By
DRB26-1176-04-03-2026	FINAL SUBMITTAL	04/05/26	COMB

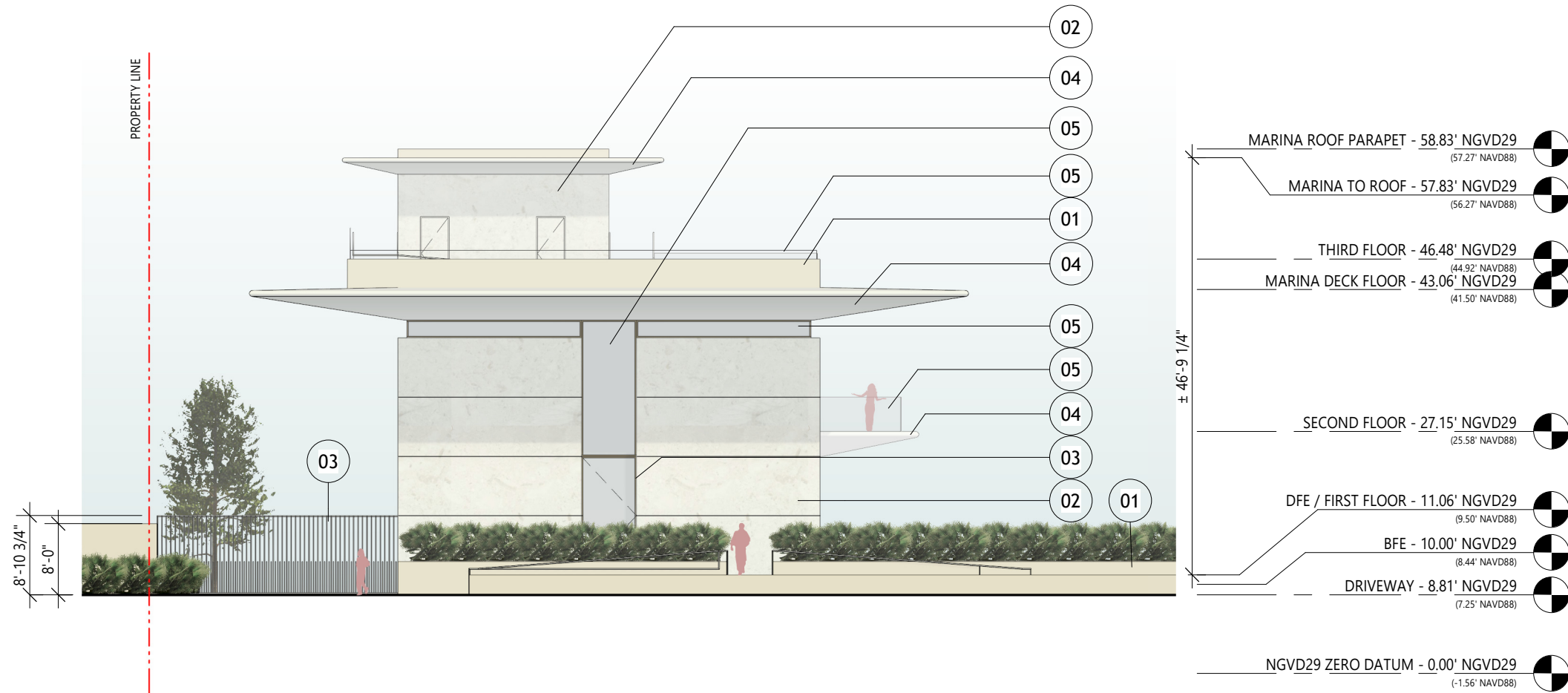
Scale
1/16" = 1'-0"

MARINA PAVILION LEFT
ELEVATION

Drawn By
GS

Dwg. no.

A46



1 MARINA PAVILION LEFT ELEVATION
1/16" = 1'-0"



MATERIAL LEGEND - MARINA PAVILION

- 01 BRANCO LIMESTONE, HONED, AT PODIUMS AND POOL
- 02 PERLA LIMESTONE, HONED, AT EXTERIOR WALLS
- 03 PEARL GOLD (RAL 1036) METAL FINISH TO DOORS, WINDOW FRAMES & GATES
- 04 GRC LIMESTONE TO ROOFS & EXTERIOR SOFFITS
- 05 CLEAR, NON-TINTED, LOW-IRON GLASS W/ LAYER OF UV PROTECTION
- 06 TIMBER SLATTED SLIDING SCREEN

BMA Project No. 2025.05.1



Project Management:
Envoie Projects
220 East 42nd Street, Suite 408
New York, NY 10017
P: 646.395.5499

Owner's Representative / PM:
Coastal Group Marinas
Holtec Center, 1001 N. US Hwy One,
Suite 710 Jupiter, FL 33477
P: 561.385.1429

Design Architect:
Winch Design
Parklife House, 133 Deodar Road
London SW15 2NU
P: +44 (0) 20 8392 8400

Structural Engineer:
TYLin Group
32 Old Slip 10th and 17th Floors
New York, NY 10005
P: 212.228.0662

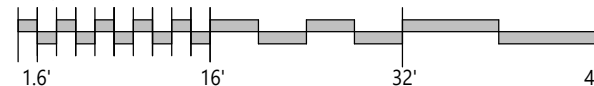
Landscape Design Architect:
Wirtz International Landscape Architects
Botermelkdijk 464 2900 Schoten België
P: +32 (0) 3 680 13 22

Landscape Architect of Record:
Christopher Cawley Landscape Architecture
7245 NE 4th Ave, Suite 104
Miami, FL 33138
P: 786.536.2961

MEPS Engineer:
Hanington Engineering Consultants
233 Mount Airy Road, Suite 202
Basking Ridge, NJ 07920
P: 973.691.0602

Civil Engineer:
Kimley Horn
2 Alhambra Plaza, Suite 500
Coral Gables, FL 33134
P: 305.673.2025

Graphic Scale: 1 inch = 16 feet



No.	Issue	Date	To
DRB25-1121-09-07-2025	FINAL SUBMITTAL	09/07/2025	MB

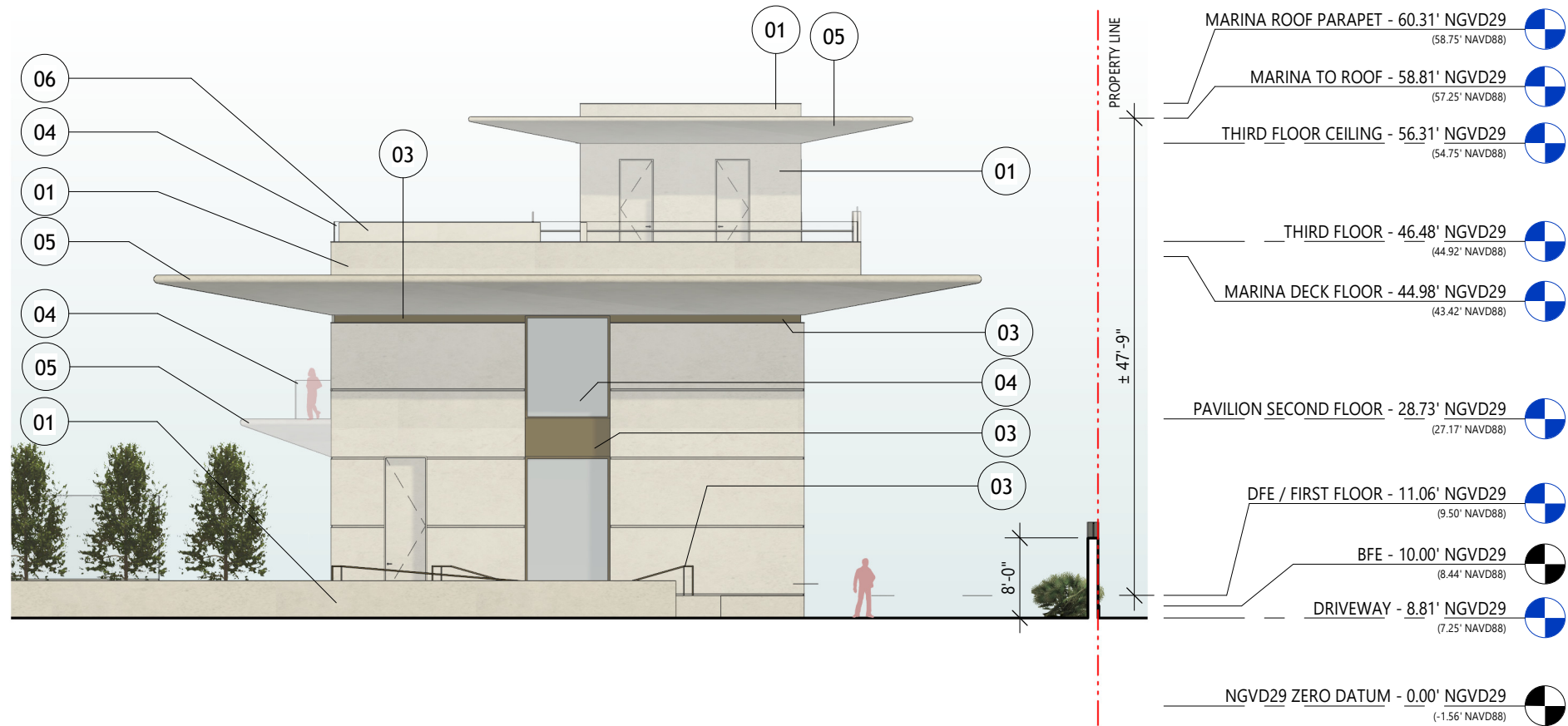
Scale
1/16" = 1'-0"

MARINA PAVILION LEFT ELEVATION

Drawn By
GS

Dwg. no.
A46

DRB25-1121-09-07-2025
FINAL SUBMITTAL



1 MARINA PAVILION RIGHT ELEVATION
1/16" = 1'-0"



MATERIAL LEGEND - MARINA PAVILION

- 01 STUCCO FINISH TO MATCH LA PERLA STONE, AT EXTERIOR WALLS
- 02 BRANCO CLASSICO LIMESTONE, AT EXTERIOR FLOOR, STAIRS, RAMPS, & OWNER'S POOL
- 03 BRONZE METAL ACCENT, PEARL GOLD (RAL 1036) METAL FINISH TO DOORS, WINDOW FRAMES & GATES
- 04 CLEAR, NON-TINTED, LOW-IRON GLASS W/ LAYER OF UV PROTECTION
- 05 GRC PANEL, COLOR TO MATCH LA PERLA STONE, AT OVERHANGS
- 06 SUKABUMI TILES, POOL

BMA Project No. 2025.05.1

ONE ISLAND PARK



MIAMI BEACH, FL



P: 631.537.7277
3401 N. Miami Ave, Suite 202 Miami, FL 33127

Owner's Representative / PM:
Coastal Group Marinas
Holtec Center, 1001 N. US Hwy One,
Suite 710 Jupiter, FL 33477
P: 561.385.1429

Design Architect:
Winch Design
Parklife House, 133 Deodar Road
London SW15 2NU
P: +44 (0) 20 8392 8400

Structural Engineer:
TYLin Group
32 Old Slip 10th and 17th Floors
New York, NY 10005
P: 212.228.0662

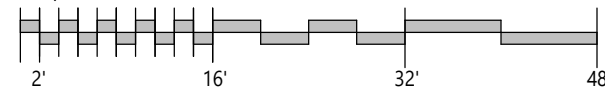
Landscape Design Architect:
Wirtz International Landscape Architects
Botermerkeldijk 464 2900 Schoten België
P: +32 (0) 3 680 13 22

Landscape Architect of Record:
Christopher Cawley Landscape Architecture
7245 NE 4th Ave, Suite 104
Miami, FL 33138
P: 786.536.2961

MEPS Engineer:
Hanington Engineering Consultants
233 Mount Airy Road, Suite 202
Basking Ridge, NJ 07920
P: 973.691.0602

Civil Engineer:
Kimley Horn
2 Alhambra Plaza, Suite 500
Coral Gables, FL 33134
P: 305.673.2025

Graphic Scale: 1 inch = 16 feet



DRB26-1176: 04-03-2026 FINAL SUBMITTAL 04/05/26 COMB
No. Issue Date To

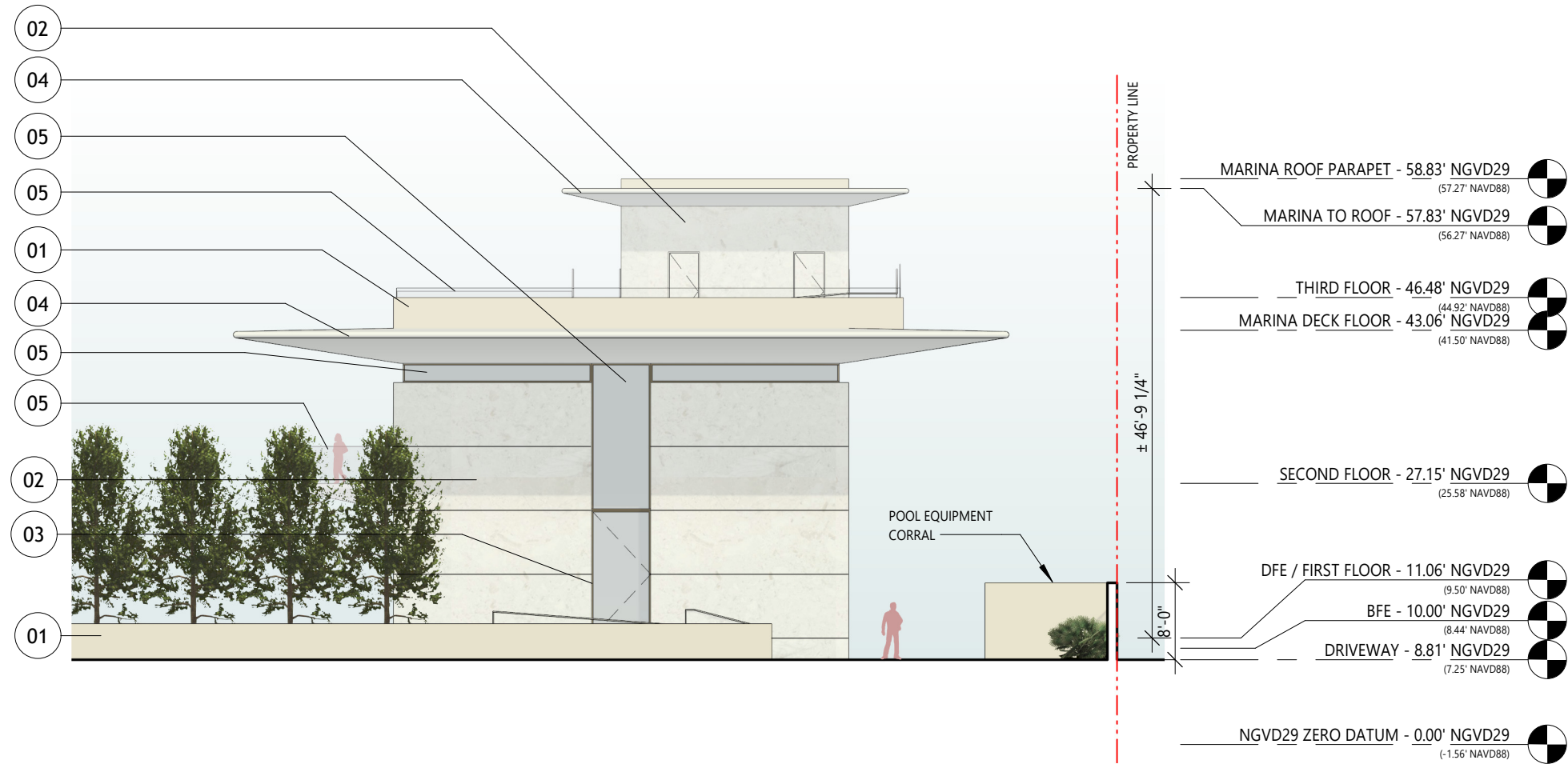
Scale
1/16" = 1'-0"
MARINA PAVILION RIGHT
ELEVATION

DRB26-1176: 04-03-2026
FINAL SUBMITTAL

Drawn By
GS

Dwg. no.

A47



1 MARINA PAVILION RIGHT ELEVATION
1/16" = 1'-0"



MATERIAL LEGEND - MARINA PAVILION

- 01 BRANCO LIMESTONE, HONED, AT PODIUMS AND POOL
- 02 PERLA LIMESTONE, HONED, AT EXTERIOR WALLS
- 03 PEARL GOLD (RAL 1036) METAL FINISH TO DOORS, WINDOW FRAMES & GATES
- 04 GRC LIMESTONE TO ROOFS & EXTERIOR SOFFITS
- 05 CLEAR, NON-TINTED, LOW-IRON GLASS W/ LAYER OF UV PROTECTION
- 06 TIMBER SLATTED SLIDING SCREEN

BMA Project No. 2025.05.1



P: 786.409.4462
2200 NW 2nd Ave Miami, FL 33127

Project Management:
Envoie Projects
220 East 42nd Street, Suite 408
New York, NY 10017
P: 646.395.5499

Owner's Representative / PM:
Coastal Group Marinas
Holtec Center, 1001 N. US Hwy One,
Suite 710 Jupiter, FL 33477
P: 561.385.1429

Design Architect:
Winch Design
Parklife House, 133 Deodar Road
London SW15 2NU
P: +44 (0) 20 8392 8400

Structural Engineer:
TYLin Group
32 Old Slip 10th and 17th Floors
New York, NY 10005
P: 212.228.0662

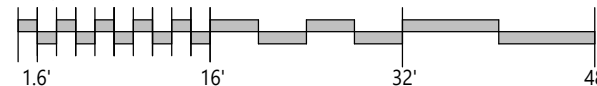
Landscape Design Architect:
Wirtz International Landscape Architects
Botermelkdijk 464 2900 Schoten België
P: +32 (0) 3 680 13 22

Landscape Architect of Record:
Christopher Cawley Landscape Architecture
7245 NE 4th Ave, Suite 104
Miami, FL 33138
P: 786.536.2961

MEPS Engineer:
Hanington Engineering Consultants
233 Mount Airy Road, Suite 202
Basking Ridge, NJ 07920
P: 973.691.0602

Civil Engineer:
Kimley Horn
2 Alhambra Plaza, Suite 500
Coral Gables, FL 33134
P: 305.673.2025

Graphic Scale: 1 inch = 16 feet



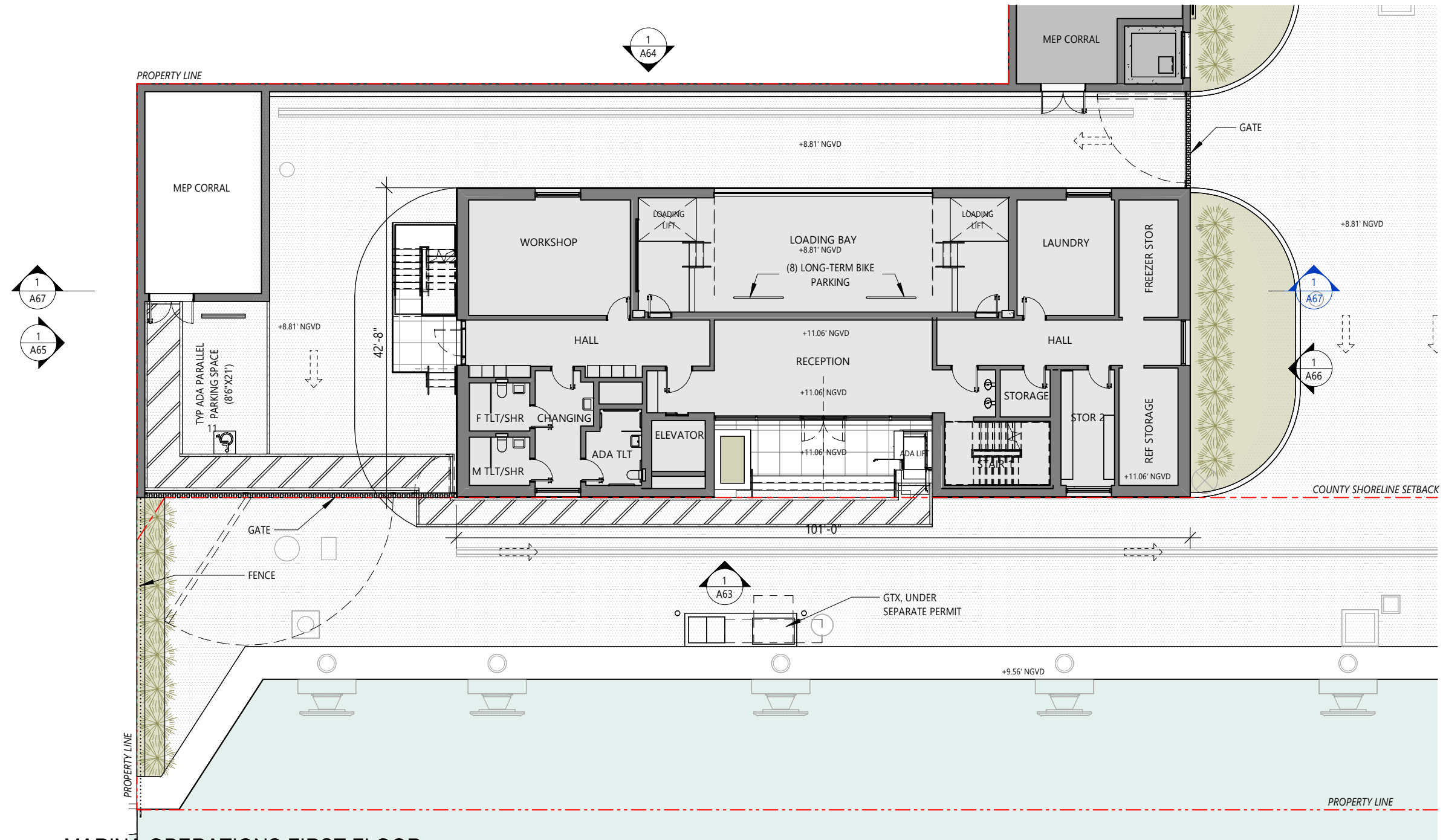
No.	Issue	Date	To
DRB25-1121-09-07-2025	FINAL SUBMITTAL	09/07/2025	MB

Scale
1/16" = 1'-0"
MARINA PAVILION RIGHT
ELEVATION

Drawn By
GS

Dwg. no.

A47



MARINA OPERATIONS FIRST FLOOR

PLAN

1/16" = 1'-0"

BMA Project No. 2025.05.1

ONE ISLAND PARK



MIAMI BEACH, FL



P: 631.537.7277
3401 N. Miami Ave, Suite 202 Miami, FL 33127

Owner's Representative / PM:
Coastal Group Marinas
Holtec Center, 1001 N. US Hwy One,
Suite 710 Jupiter, FL 33477
P: 561.385.1429

Design Architect:
Winch Design
Parklife House, 133 Deodar Road
London SW15 2NU
P: +44 (0) 20 8392 8400

Structural Engineer:
TYLin Group
32 Old Slip 10th and 17th Floors
New York, NY 10005
P: 212.228.0662

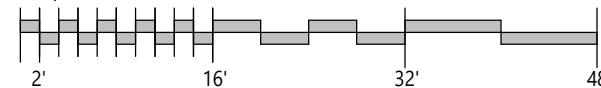
Landscape Design Architect:
Wirtz International Landscape Architects
Botermelkdijk 464 2900 Schoten België
P: +32 (0) 3 680 13 22

Landscape Architect of Record:
Christopher Cawley Landscape Architecture
7245 NE 4th Ave, Suite 104
Miami, FL 33138
P: 786.536.2961

MEPS Engineer:
Hanington Engineering Consultants
233 Mount Airy Road, Suite 202
Basking Ridge, NJ 07920
P: 973.691.0602

Civil Engineer:
Kimley Horn
2 Alhambra Plaza, Suite 500
Coral Gables, FL 33134
P: 305.673.2025

Graphic Scale: 1 inch = 16 feet



DRB26-1176: 04-03-2026 FINAL SUBMITTAL 04/05/26 COMB
No. Issue Date To

DRB26-1176: 04-03-2026 FINAL SUBMITTAL

Scale 1/16" = 1'-0"

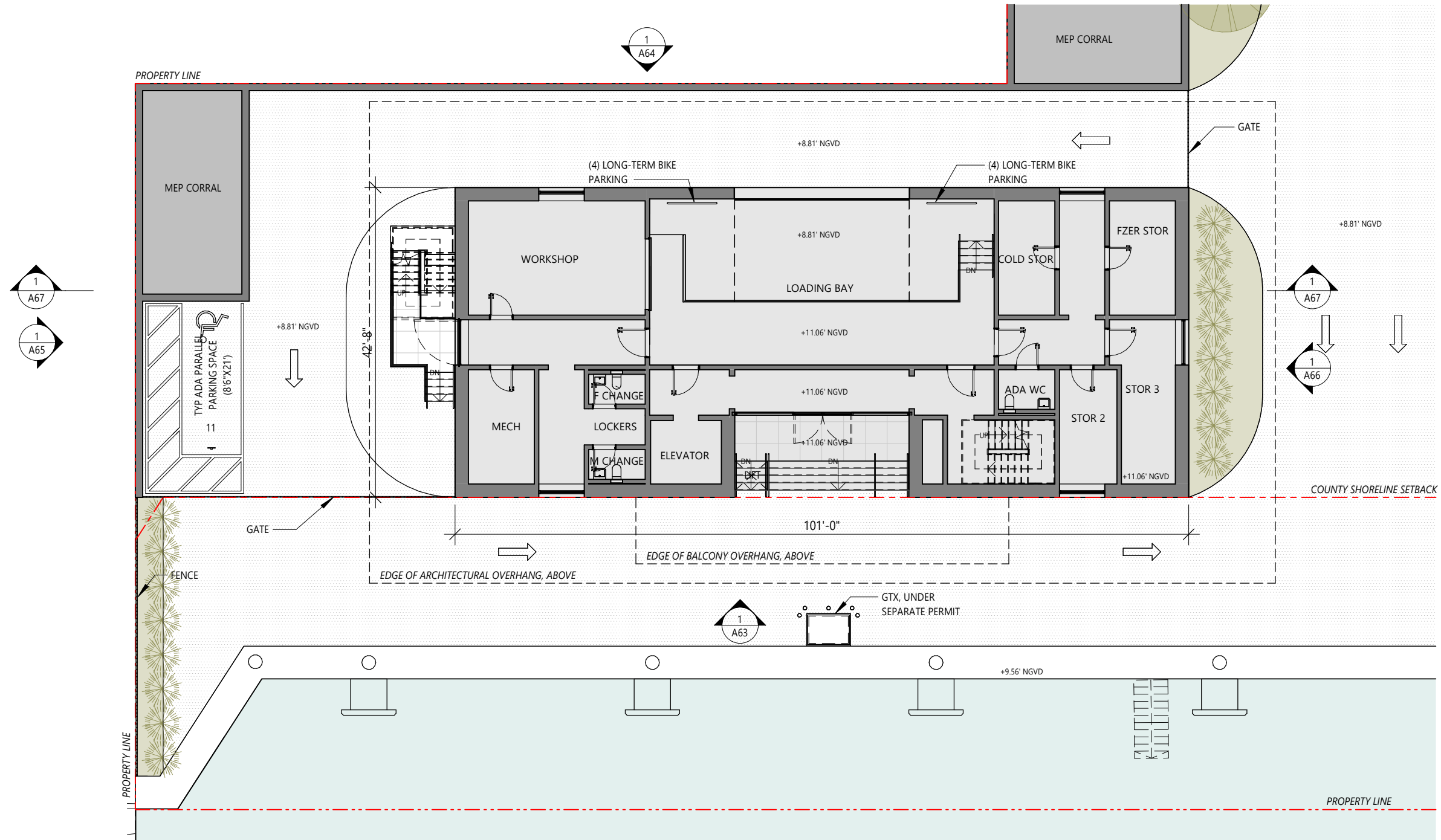
OPERATIONS FIRST FLOOR PLAN



Drawn By GS

Dwg. no.

A60



1 MARINA OPERATIONS FIRST FLOOR PLAN
1/16" = 1'-0"

BMA Project No. 2025.05.1



Project Management:
Envoie Projects
220 East 42nd Street, Suite 408
New York, NY 10017
P: 646.395.5499

Owner's Representative / PM:
Coastal Group Marinas
Holtec Center, 1001 N. US Hwy One,
Suite 710 Jupiter, FL 33477
P: 561.385.1429

Design Architect:
Winch Design
Parklife House, 133 Deodar Road
London SW15 2NU
P: +44 (0) 20 8392 8400

Structural Engineer:
TYLin Group
32 Old Slip 10th and 17th Floors
New York, NY 10005
P: 212.228.0662

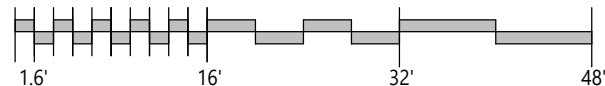
Landscape Design Architect:
Wirtz International Landscape Architects
Botermelkdiijk 464 2900 Schoten België
P: +32 (0) 3 680 13 22

Landscape Architect of Record:
Christopher Cawley Landscape Architecture
7245 NE 4th Ave, Suite 104
Miami, FL 33138
P: 786.536.2961

MEPS Engineer:
Hanington Engineering Consultants
233 Mount Airy Road, Suite 202
Basking Ridge, NJ 07920
P: 973.691.0602

Civil Engineer:
Kimley Horn
2 Alhambra Plaza, Suite 500
Coral Gables, FL 33134
P: 305.673.2025

Graphic Scale: 1 inch = 16 feet



No.	Issue	Date	To
DRB25-1121	09-07-2025 FINAL SUBMITTAL	09/07/2025	MB

Scale: 1/16" = 1'-0"

OPERATIONS FIRST FLOOR PLAN

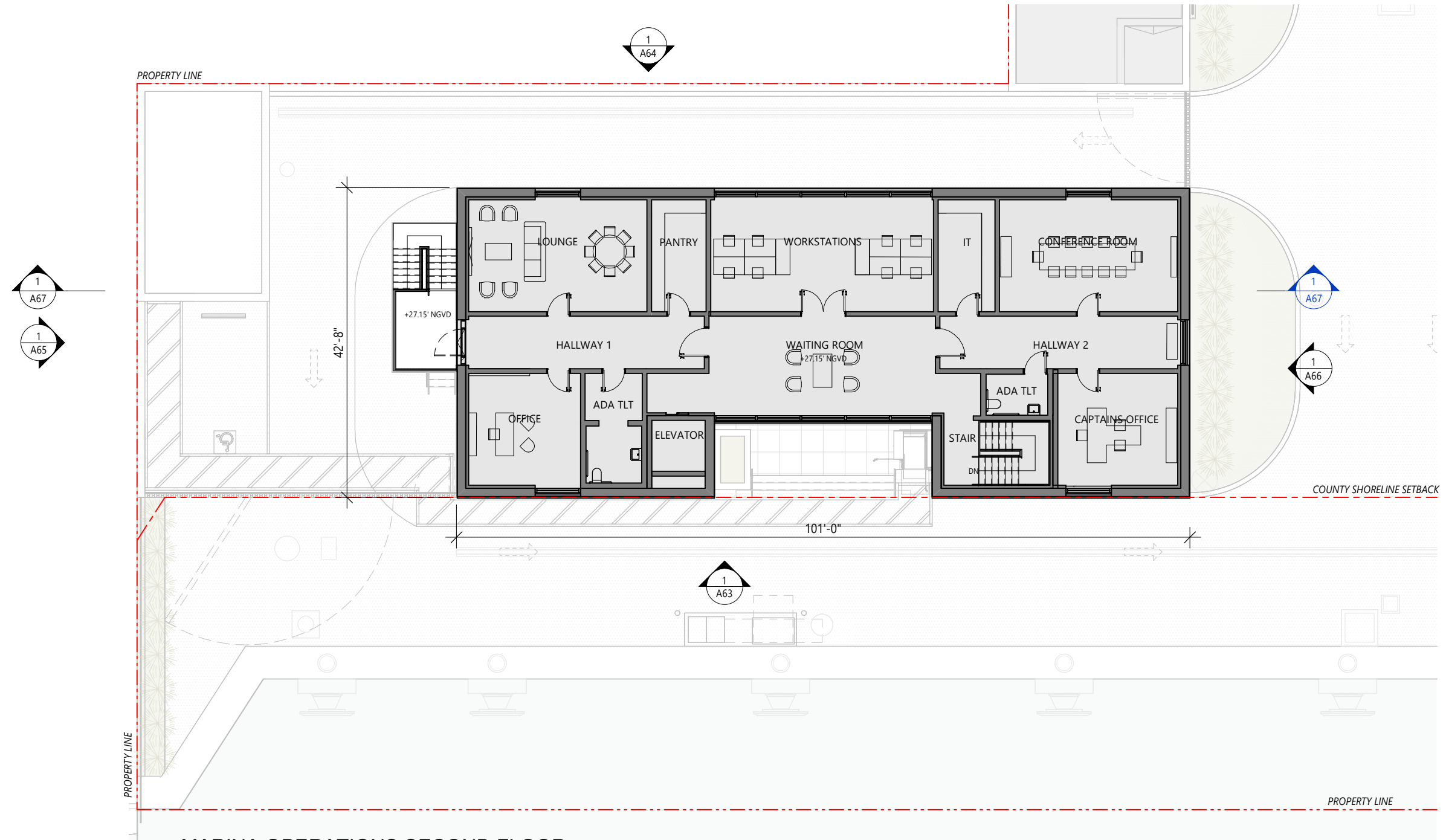
Drawn By: GS

Dwg. no. A60

DRB25-1121-09-07-2025 FINAL SUBMITTAL

9/5/2025 10:00:47 AM

© 2025 BMA Architects. All rights reserved.



1 MARINA OPERATIONS SECOND FLOOR PLAN
1/16" = 1'-0"

BMA Project No. 2025.05.1

ONE ISLAND PARK



MIAMI BEACH, FL



P: 631.537.7277
3401 N. Miami Ave, Suite 202 Miami, FL 33127

Owner's Representative / PM:
Coastal Group Marinas
Holtec Center, 1001 N. US Hwy One,
Suite 710 Jupiter, FL 33477
P: 561.385.1429

Design Architect:
Winch Design
Parklife House, 133 Deodar Road
London SW15 2NU
P: +44 (0) 20 8392 8400

Structural Engineer:
TYLin Group
32 Old Slip 10th and 17th Floors
New York, NY 10005
P: 212.228.0662

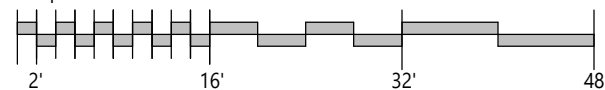
Landscape Design Architect:
Wirtz International Landscape Architects
Botermelkdijk 464 2900 Schoten België
P: +32 (0) 3 680 13 22

Landscape Architect of Record:
Christopher Cawley Landscape Architecture
7245 NE 4th Ave, Suite 104
Miami, FL 33138
P: 786.536.2961

MEPS Engineer:
Hanington Engineering Consultants
233 Mount Airy Road, Suite 202
Basking Ridge, NJ 07920
P: 973.691.0602

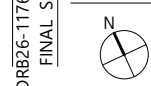
Civil Engineer:
Kimley Horn
2 Alhambra Plaza, Suite 500
Coral Gables, FL 33134
P: 305.673.2025

Graphic Scale: 1 inch = 16 feet



DRB26-1176: 04-03-2026 FINAL SUBMITTAL 04/05/26 COMB
No. Issue Date To

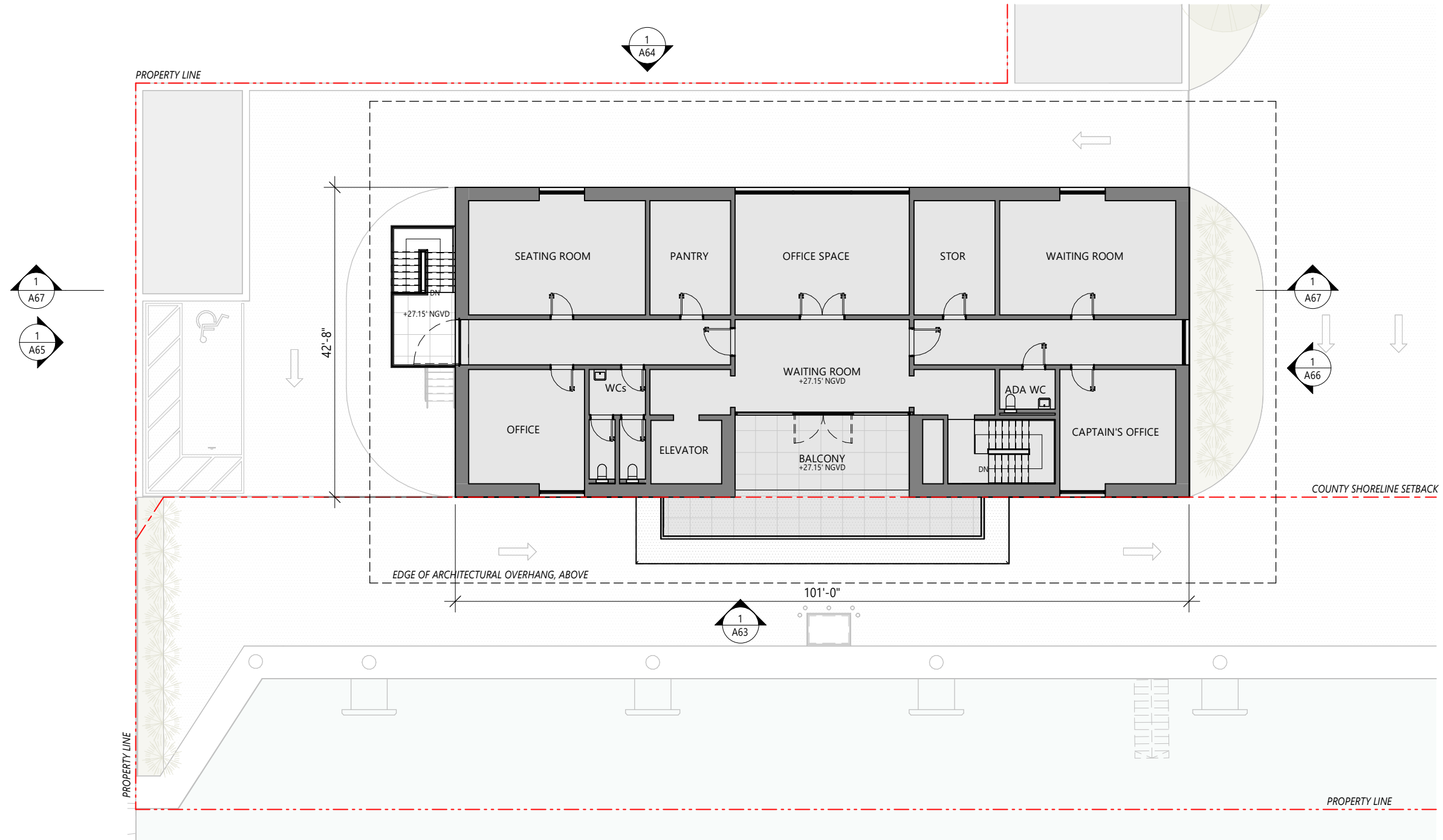
Scale
1/16" = 1'-0"
OPERATIONS SECOND FLOOR
PLAN



Drawn By
GS

Dwg. no.

A61



1 MARINA OPERATIONS SECOND FLOOR PLAN
1/16" = 1'-0"

BMA Project No. 2025.05.1



Project Management:
Envoie Projects
220 East 42nd Street, Suite 408
New York, NY 10017
P: 646.395.5499

Owner's Representative / PM:
Coastal Group Marinas
Holtec Center, 1001 N. US Hwy One,
Suite 710 Jupiter, FL 33477
P: 561.385.1429

Design Architect:
Winch Design
Parklife House, 133 Deodar Road
London SW15 2NU
P: +44 (0) 20 8392 8400

Structural Engineer:
TYLin Group
32 Old Slip 10th and 17th Floors
New York, NY 10005
P: 212.228.0662

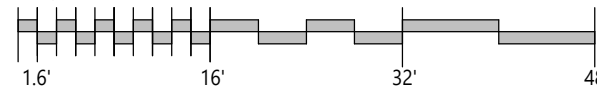
Landscape Design Architect:
Wirtz International Landscape Architects
Botermelkdijk 464 2900 Schoten België
P: +32 (0) 3 680 13 22

Landscape Architect of Record:
Christopher Cawley Landscape Architecture
7245 NE 4th Ave, Suite 104
Miami, FL 33138
P: 786.536.2961

MEPS Engineer:
Hanington Engineering Consultants
233 Mount Airy Road, Suite 202
Basking Ridge, NJ 07920
P: 973.691.0602

Civil Engineer:
Kimley Horn
2 Alhambra Plaza, Suite 500
Coral Gables, FL 33134
P: 305.673.2025

Graphic Scale: 1 inch = 16 feet



No.	Issue	Date	To
DRB25-1121	09-07-2025 FINAL SUBMITTAL	09/07/2025	MB

Scale
1/16" = 1'-0"

OPERATIONS SECOND FLOOR
PLAN

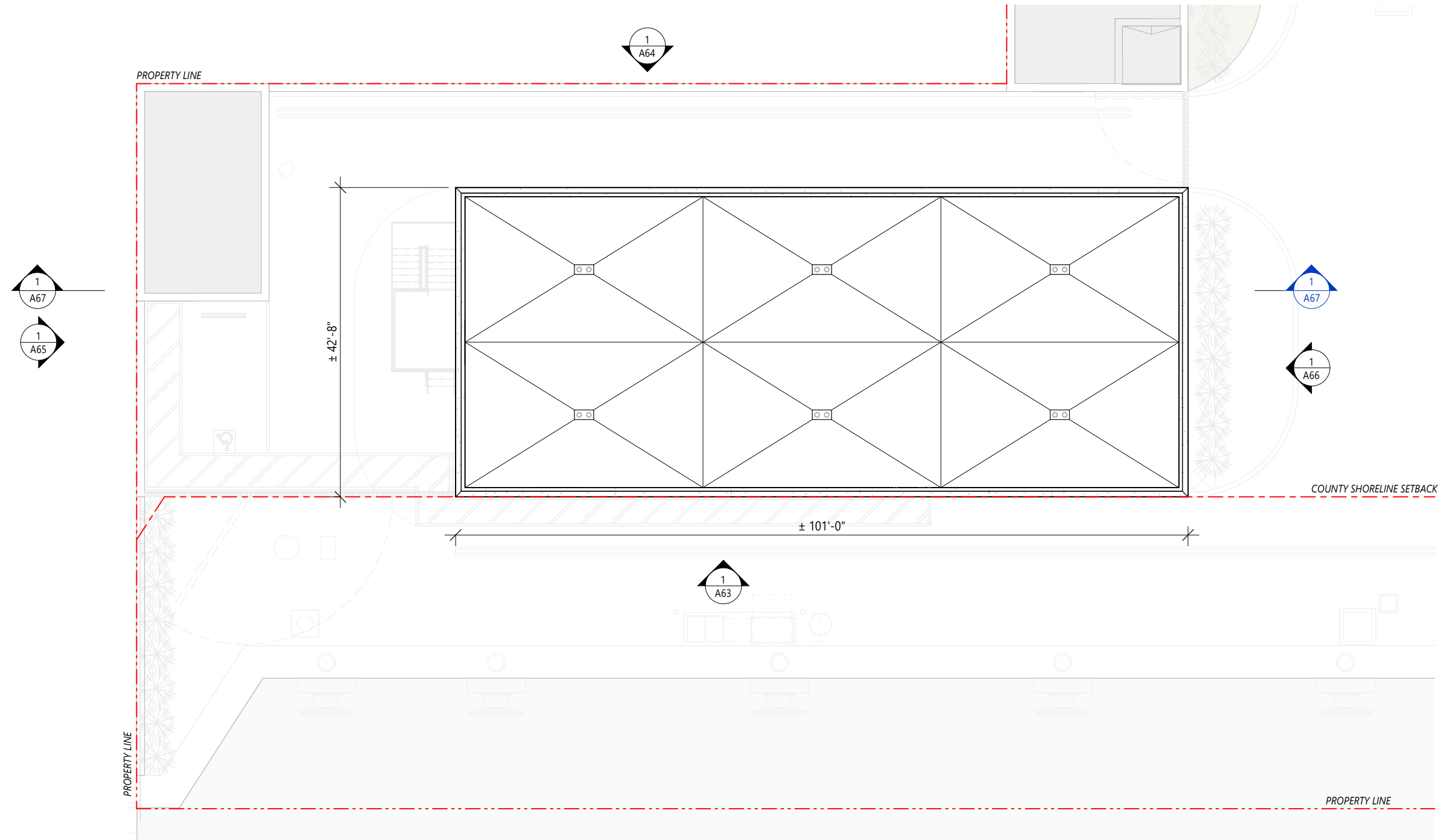
Drawn By
GS

Dwg. no.
A61

DRB25-1121-09-07-2025
FINAL SUBMITTAL

9/5/2025 10:00:48 AM

© 2025 BMA Architects. All rights reserved.



1 MARIN OPERATIONS ROOF PLAN
1/16" = 1'-0"

BMA Project No. 2025.05.1

ONE ISLAND PARK



MIAMI BEACH, FL



P: 631.537.7277
3401 N. Miami Ave, Suite 202 Miami, FL 33127

Owner's Representative / PM:
Coastal Group Marinas
Holtec Center, 1001 N. US Hwy One,
Suite 710 Jupiter, FL 33477
P: 561.385.1429

Design Architect:
Winch Design
Parklife House, 133 Deodar Road
London SW15 2NU
P: +44 (0) 20 8392 8400

Structural Engineer:
TYLin Group
32 Old Slip 10th and 17th Floors
New York, NY 10005
P: 212.228.0662

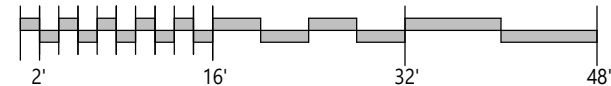
Landscape Design Architect:
Wirtz International Landscape Architects
Botermeeldijk 464 2900 Schoten België
P: +32 (0) 3 680 13 22

Landscape Architect of Record:
Christopher Cawley Landscape Architecture
7245 NE 4th Ave, Suite 104
Miami, FL 33138
P: 786.536.2961

MEPS Engineer:
Hanington Engineering Consultants
233 Mount Airy Road, Suite 202
Basking Ridge, NJ 07920
P: 973.691.0602

Civil Engineer:
Kimley Horn
2 Alhambra Plaza, Suite 500
Coral Gables, FL 33134
P: 305.673.2025

Graphic Scale: 1 inch = 16 feet



No.	Issue	Date	To
DRB26-1176: 04-03-2026	FINAL SUBMITTAL	04/05/26	COMB

Scale
1/16" = 1'-0"

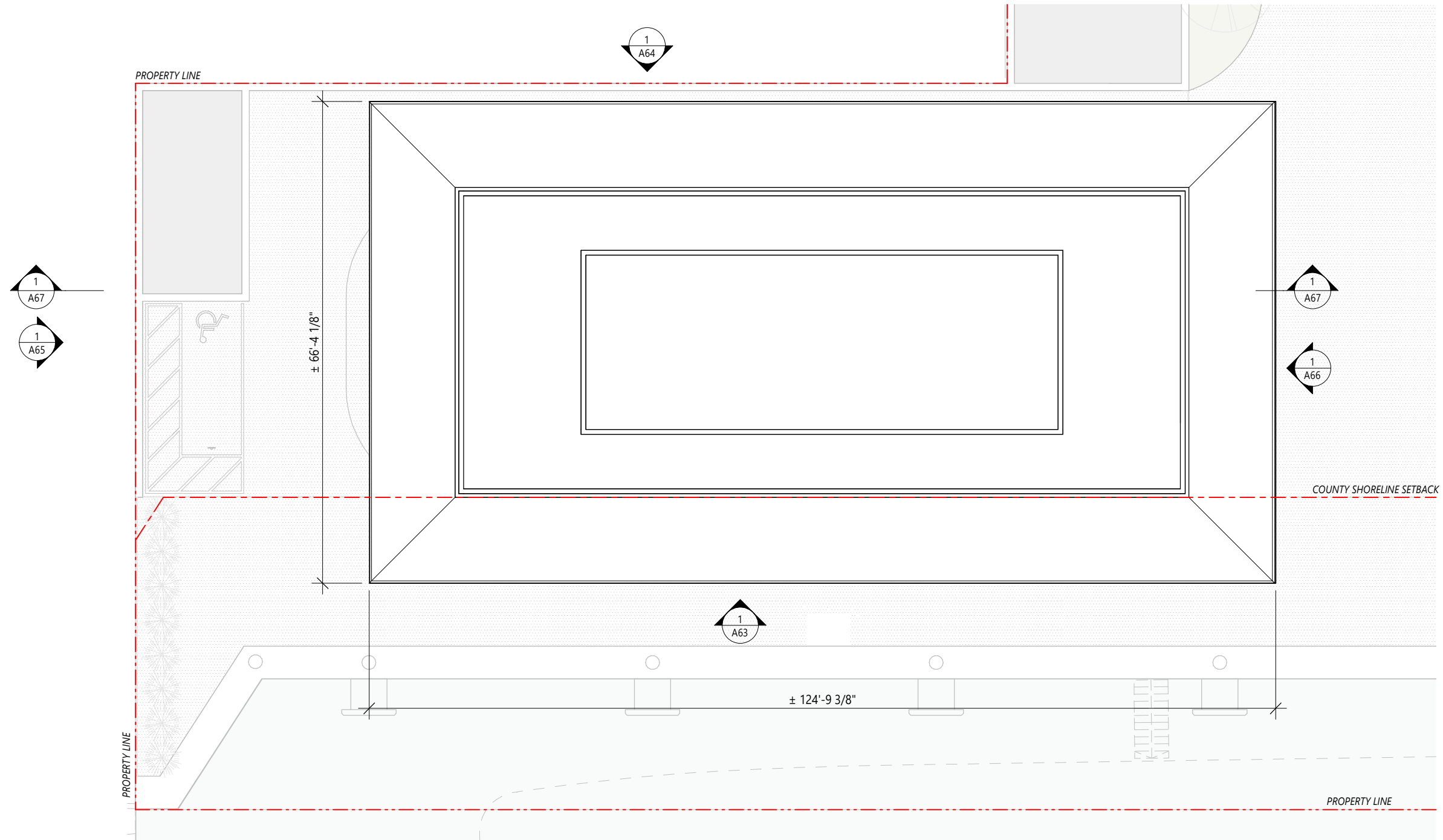
OPERATIONS ROOF PLAN



Drawn By
GS

Dwg. no.

A62



1 MARINA OPERATIONS ROOF PLAN
1/16" = 1'-0"

BMA Project No. 2025.05.1



P: 786.409.4462
2200 NW 2nd Ave Miami, FL 33127

Project Management:
Envoie Projects
220 East 42nd Street, Suite 408
New York, NY 10017
P: 646.395.5499

Owner's Representative / PM:
Coastal Group Marinas
Holtec Center, 1001 N. US Hwy One,
Suite 710 Jupiter, FL 33477
P: 561.385.1429

Design Architect:
Winch Design
Parklife House, 133 Deodar Road
London SW15 2NU
P: +44 (0) 20 8392 8400

Structural Engineer:
TYLin Group
32 Old Slip 10th and 17th Floors
New York, NY 10005
P: 212.228.0662

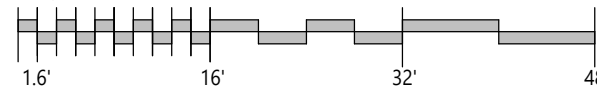
Landscape Design Architect:
Wirtz International Landscape Architects
Botermelkdijk 464 2900 Schoten België
P: +32 (0) 3 680 13 22

Landscape Architect of Record:
Christopher Cawley Landscape Architecture
7245 NE 4th Ave, Suite 104
Miami, FL 33138
P: 786.536.2961

MEPS Engineer:
Hanington Engineering Consultants
233 Mount Airy Road, Suite 202
Basking Ridge, NJ 07920
P: 973.691.0602

Civil Engineer:
Kimley Horn
2 Alhambra Plaza, Suite 500
Coral Gables, FL 33134
P: 305.673.2025

Graphic Scale: 1 inch = 16 feet



No.	Issue	Date	To
DRB25-1121	09-07-2025 FINAL SUBMITTAL	09/07/2025	MB

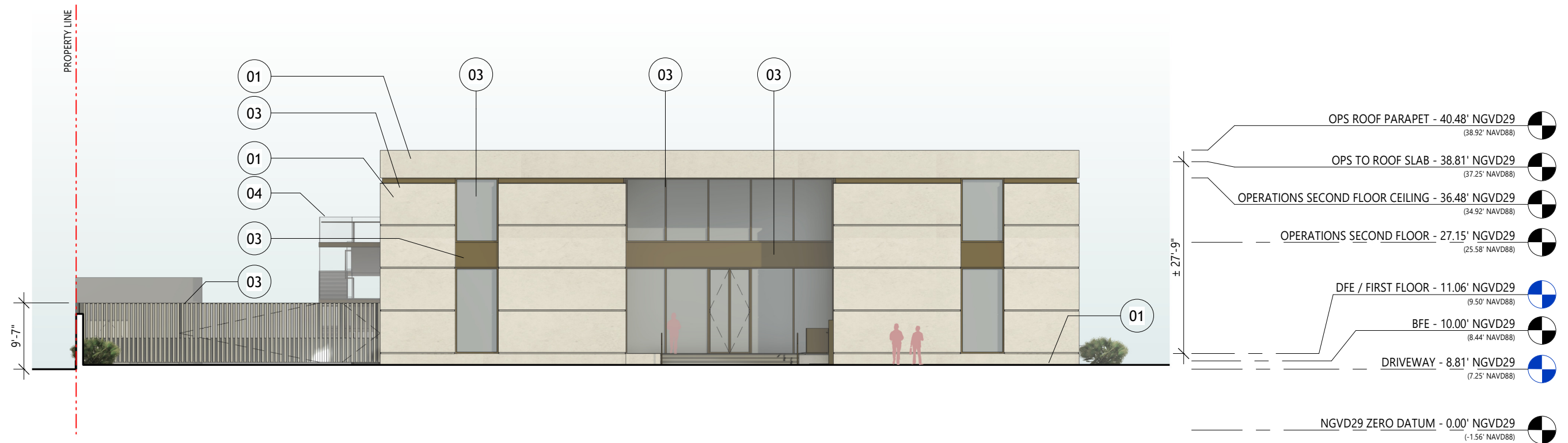
Scale
1/16" = 1'-0"
OPERATIONS ROOF PLAN



Drawn By
GS

Dwg. no.

A62



1 MARINA OPERATIONS FRONT ELEV.
1/16" = 1'-0"



MATERIAL LEGEND - MARINA OPERATIONS

- 01 STUCCO FINISH TO MATCH LA PERLA STONE, AT EXTERIOR WALLS
- 02 BRANCO CLASSICO LIMESTONE, AT EXTERIOR FLOOR, STAIRS, RAMPS, & OWNER'S POOL
- 03 BRONZE METAL ACCENT, PEARL GOLD (RAL 1036) METAL FINISH TO DOORS, WINDOW FRAMES & GATES
- 04 CLEAR, NON-TINTED, LOW-IRON GLASS W/ LAYER OF UV PROTECTION

BMA Project No. 2025.05.1



P: 631.537.7277
3401 N. Miami Ave, Suite 202 Miami, FL 33127

Owner's Representative / PM:
Coastal Group Marinas
Holtec Center, 1001 N. US Hwy One,
Suite 710 Jupiter, FL 33477
P: 561.385.1429

Design Architect:
Winch Design
Parklife House, 133 Deodar Road
London SW15 2NU
P: +44 (0) 20 8392 8400

Structural Engineer:
TYLin Group
32 Old Slip 10th and 17th Floors
New York, NY 10005
P: 212.228.0662

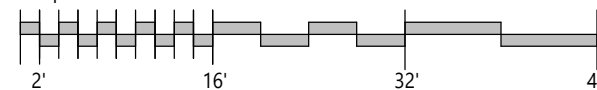
Landscape Design Architect:
Wirtz International Landscape Architects
Botermelkdijk 464 2900 Schoten België
P: +32 (0) 3 680 13 22

Landscape Architect of Record:
Christopher Cawley Landscape Architecture
7245 NE 4th Ave, Suite 104
Miami, FL 33138
P: 786.536.2961

MEPS Engineer:
Hanington Engineering Consultants
233 Mount Airy Road, Suite 202
Basking Ridge, NJ 07920
P: 973.691.0602

Civil Engineer:
Kimley Horn
2 Alhambra Plaza, Suite 500
Coral Gables, FL 33134
P: 305.673.2025

Graphic Scale: 1 inch = 16 feet



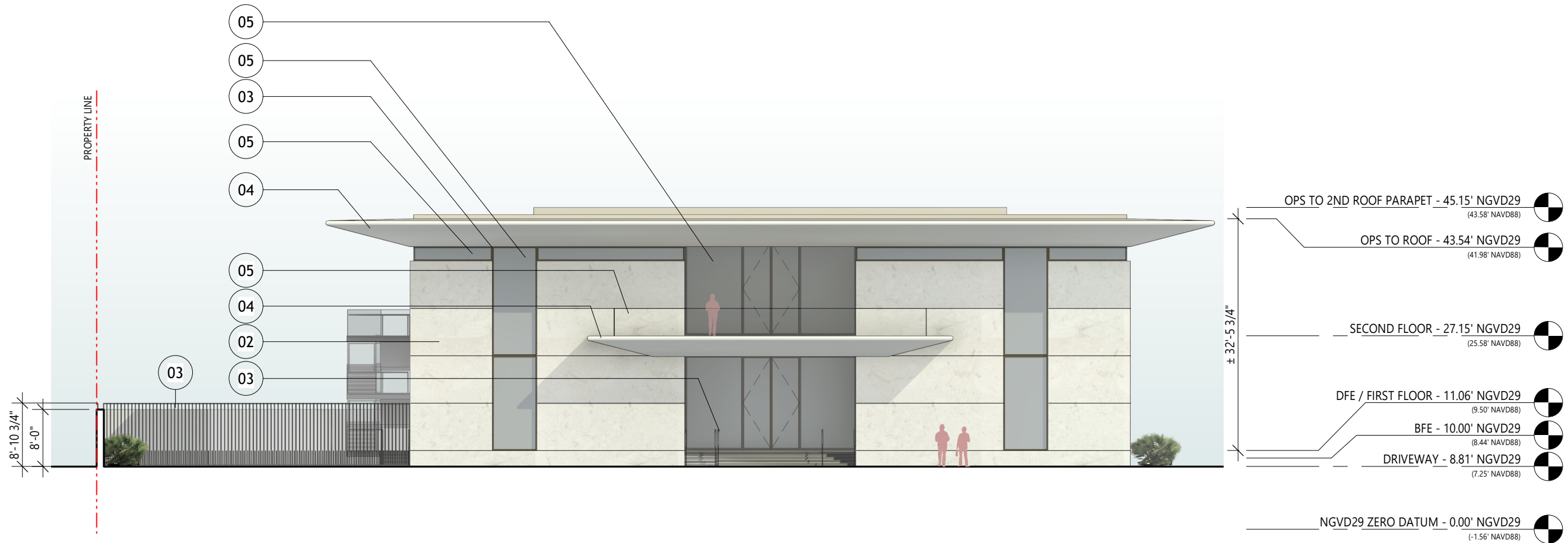
No.	Issue	Date	By
DRB26-1176-04-03-2026	FINAL SUBMITTAL	04/05/26	COMB

Scale
1/16" = 1'-0"
OPERATIONS FRONT
ELEVATION

Drawn By
GS

Dwg. no.

A63



1 MARINA OPERATIONS FRONT ELEV.
1/16" = 1'-0"

MATERIAL LEGEND - MARINA OPERATIONS



- 02 PERLA LIMESTONE, HONED, AT EXTERIOR WALLS
- 03 PEARL GOLD (RAL 1036) METAL FINISH TO DOORS, WINDOW FRAMES & GATES
- 04 GRC LIMESTONE TO ROOFS & EXTERIOR SOFFITS
- 05 CLEAR, NON-TINTED, LOW-IRON GLASS W/ LAYER OF UV PROTECTION

BMA Project No. 2025.05.1



Project Management:
Envoie Projects
220 East 42nd Street, Suite 408
New York, NY 10017
P: 646.395.5499

Owner's Representative / PM:
Coastal Group Marinas
Holtec Center, 1001 N. US Hwy One,
Suite 710 Jupiter, FL 33477
P: 561.385.1429

Design Architect:
Winch Design
Parklife House, 133 Deodar Road
London SW15 2NU
P: +44 (0) 20 8392 8400

Structural Engineer:
TYLin Group
32 Old Slip 10th and 17th Floors
New York, NY 10005
P: 212.228.0662

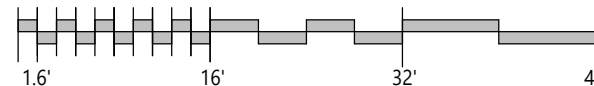
Landscape Design Architect:
Wirtz International Landscape Architects
Botermelkdijk 464 2900 Schoten België
P: +32 (0) 3 680 13 22

Landscape Architect of Record:
Christopher Cawley Landscape Architecture
7245 NE 4th Ave, Suite 104
Miami, FL 33138
P: 786.536.2961

MEPS Engineer:
Hanington Engineering Consultants
233 Mount Airy Road, Suite 202
Basking Ridge, NJ 07920
P: 973.691.0602

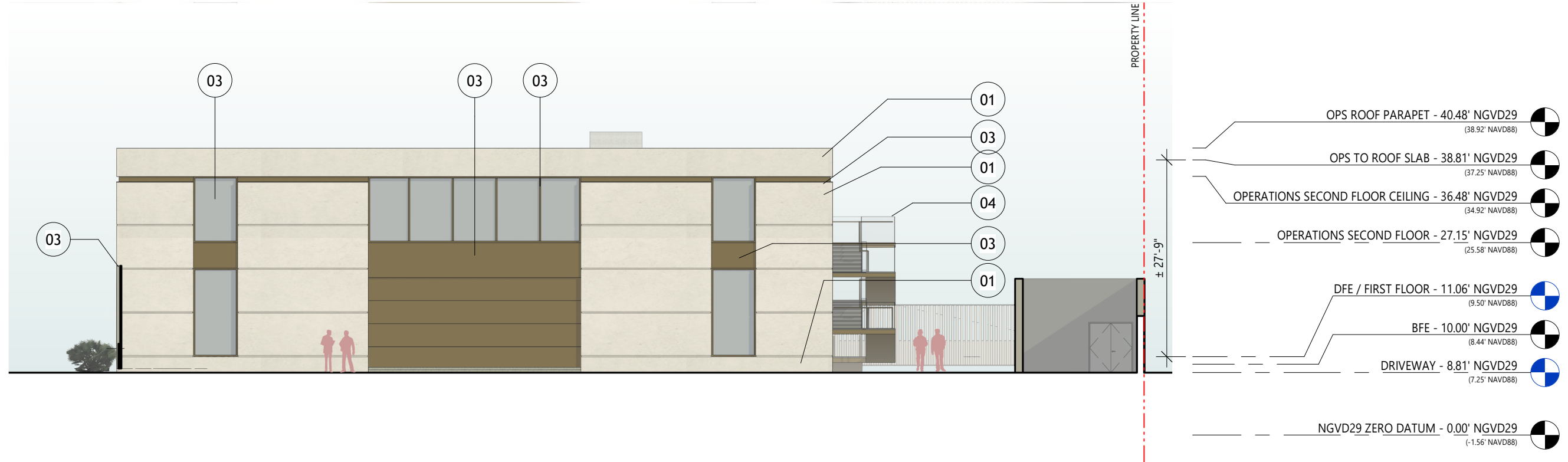
Civil Engineer:
Kimley Horn
2 Alhambra Plaza, Suite 500
Coral Gables, FL 33134
P: 305.673.2025

Graphic Scale: 1 inch = 16 feet



No.	Issue	Date	To
DRB25-1121: 09-07-2025	FINAL SUBMITTAL	09/07/2025	MB

Scale
1/16" = 1'-0"
OPERATIONS FRONT
ELEVATION
Dwg. no.
A63



1 MARINA OPERATIONS REAR ELEV.
1/16" = 1'-0"



MATERIAL LEGEND - MARINA OPERATIONS

- 01 STUCCO FINISH TO MATCH LA PERLA STONE, AT EXTERIOR WALLS
- 02 BRANCO CLASSICO LIMESTONE, AT EXTERIOR FLOOR, STAIRS, RAMPS, & OWNER'S POOL
- 03 BRONZE METAL ACCENT, PEARL GOLD (RAL 1036) METAL FINISH TO DOORS, WINDOW FRAMES & GATES
- 04 CLEAR, NON-TINTED, LOW-IRON GLASS W/ LAYER OF UV PROTECTION

BMA Project No. 2025.05.1



P: 631.537.7277
3401 N. Miami Ave, Suite 202 Miami, FL 33127

Owner's Representative / PM:
Coastal Group Marinas
Holtec Center, 1001 N. US Hwy One,
Suite 710 Jupiter, FL 33477
P: 561.385.1429

Design Architect:
Winch Design
Parklife House, 133 Deodar Road
London SW15 2NU
P: +44 (0) 20 8392 8400

Structural Engineer:
TYLin Group
32 Old Slip 10th and 17th Floors
New York, NY 10005
P: 212.228.0662

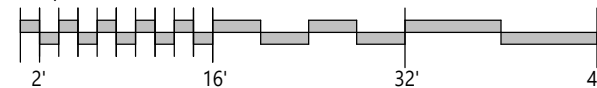
Landscape Design Architect:
Wirtz International Landscape Architects
Botermelkdijk 464 2900 Schoten België
P: +32 (0) 3 680 13 22

Landscape Architect of Record:
Christopher Cawley Landscape Architecture
7245 NE 4th Ave, Suite 104
Miami, FL 33138
P: 786.536.2961

MEPS Engineer:
Hanington Engineering Consultants
233 Mount Airy Road, Suite 202
Basking Ridge, NJ 07920
P: 973.691.0602

Civil Engineer:
Kimley Horn
2 Alhambra Plaza, Suite 500
Coral Gables, FL 33134
P: 305.673.2025

Graphic Scale: 1 inch = 16 feet



No.	Issue	Date	To
DRB26-1176-04-03-2026	FINAL SUBMITTAL	04/05/26	COMB

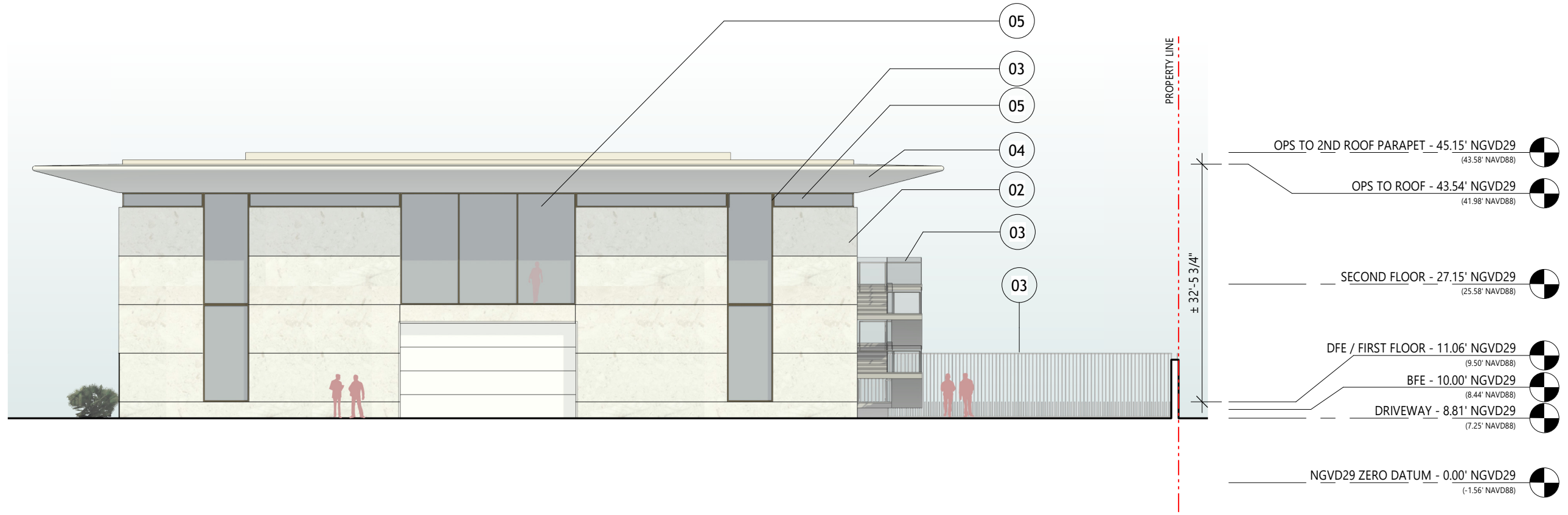
Scale
1/16" = 1'-0"

OPERATIONS REAR ELEVATION

Drawn By
GS

Dwg. no.

A64



1 MARINA OPERATIONS REAR ELEV.
1/16" = 1'-0"



MATERIAL LEGEND - MARINA OPERATIONS

- 02 PERLA LIMESTONE, HONED, AT EXTERIOR WALLS
- 03 PEARL GOLD (RAL 1036) METAL FINISH TO DOORS, WINDOW FRAMES & GATES
- 04 GRC LIMESTONE TO ROOFS & EXTERIOR SOFFITS
- 05 CLEAR, NON-TINTED, LOW-IRON GLASS W/ LAYER OF UV PROTECTION

BMA Project No. 2025.05.1

ONE ISLAND PARK



P: 786.409.4462
2200 NW 2nd Ave Miami, FL 33127

Project Management:
Envoie Projects
220 East 42nd Street, Suite 408
New York, NY 10017
P: 646.395.5499

Owner's Representative / PM:
Coastal Group Marinas
Holtec Center, 1001 N. US Hwy One,
Suite 710 Jupiter, FL 33477
P: 561.385.1429

Design Architect:
Winch Design
Parklife House, 133 Deodar Road
London SW15 2NU
P: +44 (0) 20 8392 8400

Structural Engineer:
TYLin Group
32 Old Slip 10th and 17th Floors
New York, NY 10005
P: 212.228.0662

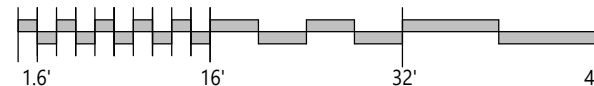
Landscape Design Architect:
Wirtz International Landscape Architects
Botermelkdijk 464 2900 Schoten België
P: +32 (0) 3 680 13 22

Landscape Architect of Record:
Christopher Cawley Landscape Architecture
7245 NE 4th Ave, Suite 104
Miami, FL 33138
P: 786.536.2961

MEPS Engineer:
Hanington Engineering Consultants
233 Mount Airy Road, Suite 202
Basking Ridge, NJ 07920
P: 973.691.0602

Civil Engineer:
Kimley Horn
2 Alhambra Plaza, Suite 500
Coral Gables, FL 33134
P: 305.673.2025

Graphic Scale: 1 inch = 16 feet



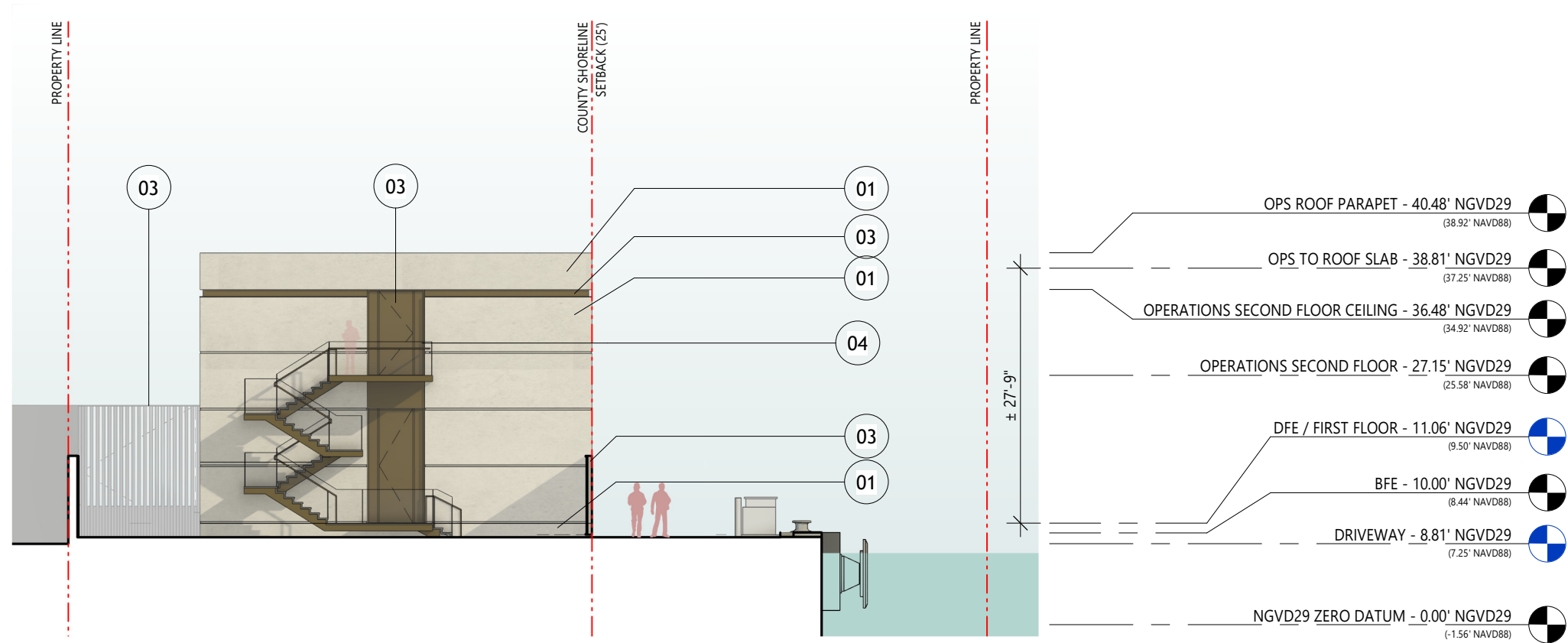
No.	Issue	Date	To
DRB25-1121	09-07-2025 FINAL SUBMITTAL	09/07/2025	MB

Scale
1/16" = 1'-0"
OPERATIONS REAR ELEVATION

Drawn By
GS

Dwg. no.

A64



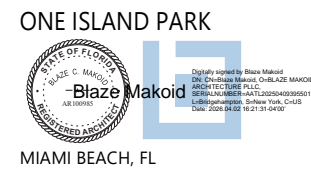
1 MARINA OPERATIONS LEFT ELEV.
1/16" = 1'-0"



MATERIAL LEGEND - MARINA OPERATIONS

- 01 STUCCO FINISH TO MATCH LA PERLA STONE, AT EXTERIOR WALLS
- 02 BRANCO CLASSICO LIMESTONE, AT EXTERIOR FLOOR, STAIRS, RAMPS, & OWNER'S POOL
- 03 BRONZE METAL ACCENT, PEARL GOLD (RAL 1036) METAL FINISH TO DOORS, WINDOW FRAMES & GATES
- 04 CLEAR, NON-TINTED, LOW-IRON GLASS W/ LAYER OF UV PROTECTION

BMA Project No. 2025.05.1



Owner's Representative / PM:
Coastal Group Marinas
Holtec Center, 1001 N. US Hwy One,
Suite 710 Jupiter, FL 33477
P: 561.385.1429

Design Architect:
Winch Design
Parklife House, 133 Deodar Road
London SW15 2NU
P: +44 (0) 20 8392 8400

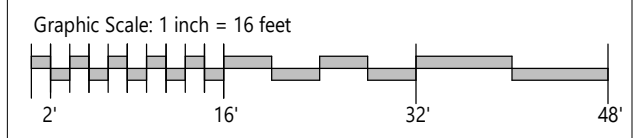
Structural Engineer:
TYLin Group
32 Old Slip 10th and 17th Floors
New York, NY 10005
P: 212.228.0662

Landscape Design Architect:
Wirtz International Landscape Architects
Botermelkdijk 464 2900 Schoten België
P: +32 (0) 3 680 13 22

Landscape Architect of Record:
Christopher Cawley Landscape Architecture
7245 NE 4th Ave, Suite 104
Miami, FL 33138
P: 786.536.2961

MEPS Engineer:
Hanington Engineering Consultants
233 Mount Airy Road, Suite 202
Basking Ridge, NJ 07920
P: 973.691.0602

Civil Engineer:
Kimley Horn
2 Alhambra Plaza, Suite 500
Coral Gables, FL 33134
P: 305.673.2025



No.	Issue	Date	To
DRB26-1176: 04-03-2026	FINAL SUBMITTAL	04/05/26	COMB

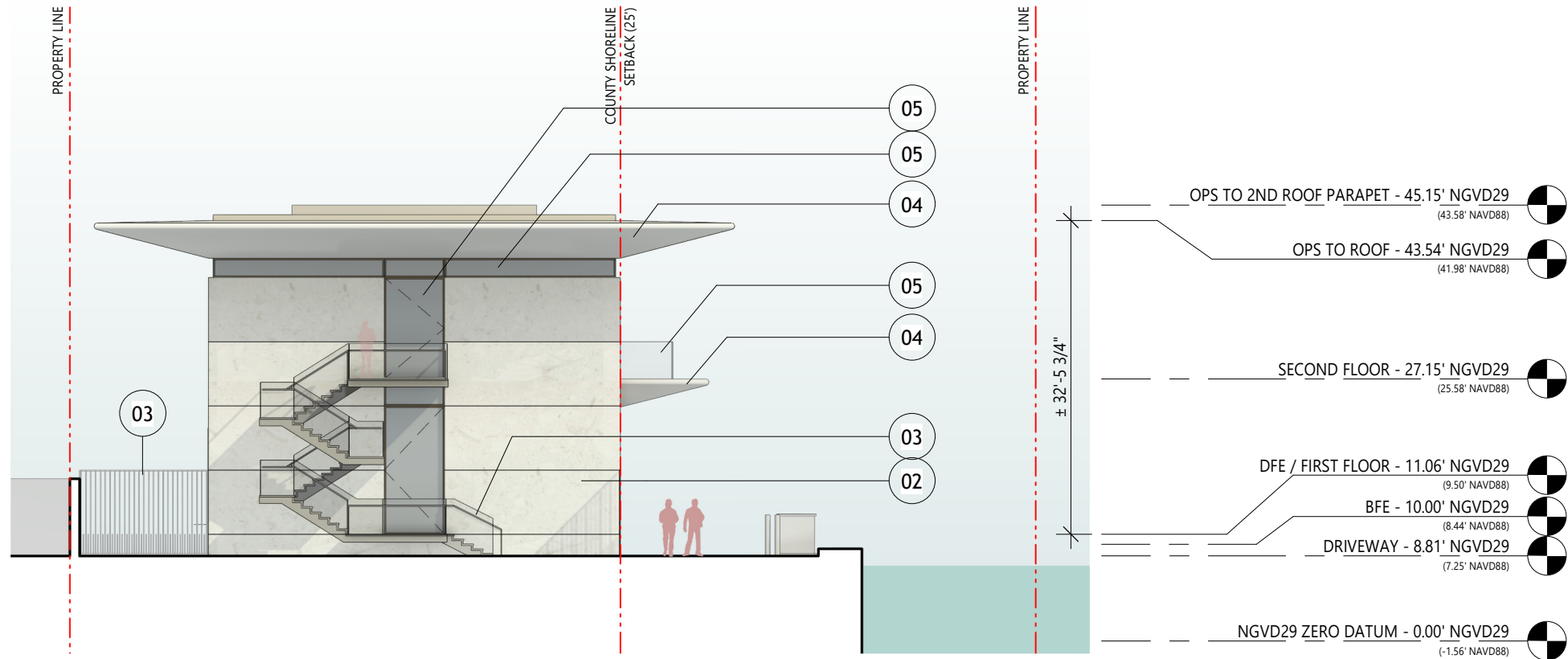
Scale
1/16" = 1'-0"

Drawn By
GS

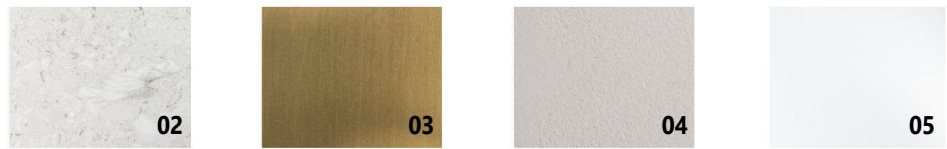
OPERATIONS LEFT ELEVATION

Dwg. no.
A65

DRB26-1176: 04-03-2026
FINAL SUBMITTAL



1 MARINA OPERATIONS LEFT ELEV.
1/16" = 1'-0"



MATERIAL LEGEND - MARINA OPERATIONS

- 02 PERLA LIMESTONE, HONED, AT EXTERIOR WALLS
- 03 PEARL GOLD (RAL 1036) METAL FINISH TO DOORS, WINDOW FRAMES & GATES
- 04 GRC LIMESTONE TO ROOFS & EXTERIOR SOFFITS
- 05 CLEAR, NON-TINTED, LOW-IRON GLASS W/ LAYER OF UV PROTECTION

BMA Project No. 2025.05.1

ONE ISLAND PARK

MIAMI BEACH, FL

BMA
ARCHITECTS

P: 786.409.4462
2200 NW 2nd Ave Miami, FL 33127

Project Management:
Envoie Projects
220 East 42nd Street, Suite 408
New York, NY 10017
P: 646.395.5499

Owner's Representative / PM:
Coastal Group Marinas
Holtec Center, 1001 N. US Hwy One,
Suite 710 Jupiter, FL 33477
P: 561.385.1429

Design Architect:
Winch Design
Parklife House, 133 Deodar Road
London SW15 2NU
P: +44 (0) 20 8392 8400

Structural Engineer:
TYLin Group
32 Old Slip 10th and 17th Floors
New York, NY 10005
P: 212.228.0662

Landscape Design Architect:
Wirtz International Landscape Architects
Botermelkijk 464 2900 Schoten België
P: +32 (0) 3 680 13 22

Landscape Architect of Record:
Christopher Cawley Landscape Architecture
7245 NE 4th Ave, Suite 104
Miami, FL 33138
P: 786.536.2961

MEPS Engineer:
Hanington Engineering Consultants
233 Mount Airy Road, Suite 202
Basking Ridge, NJ 07920
P: 973.691.0602

Civil Engineer:
Kimley Horn
2 Alhambra Plaza, Suite 500
Coral Gables, FL 33134
P: 305.673.2025

Graphic Scale: 1 inch = 16 feet

Scale
1/16" = 1'-0"

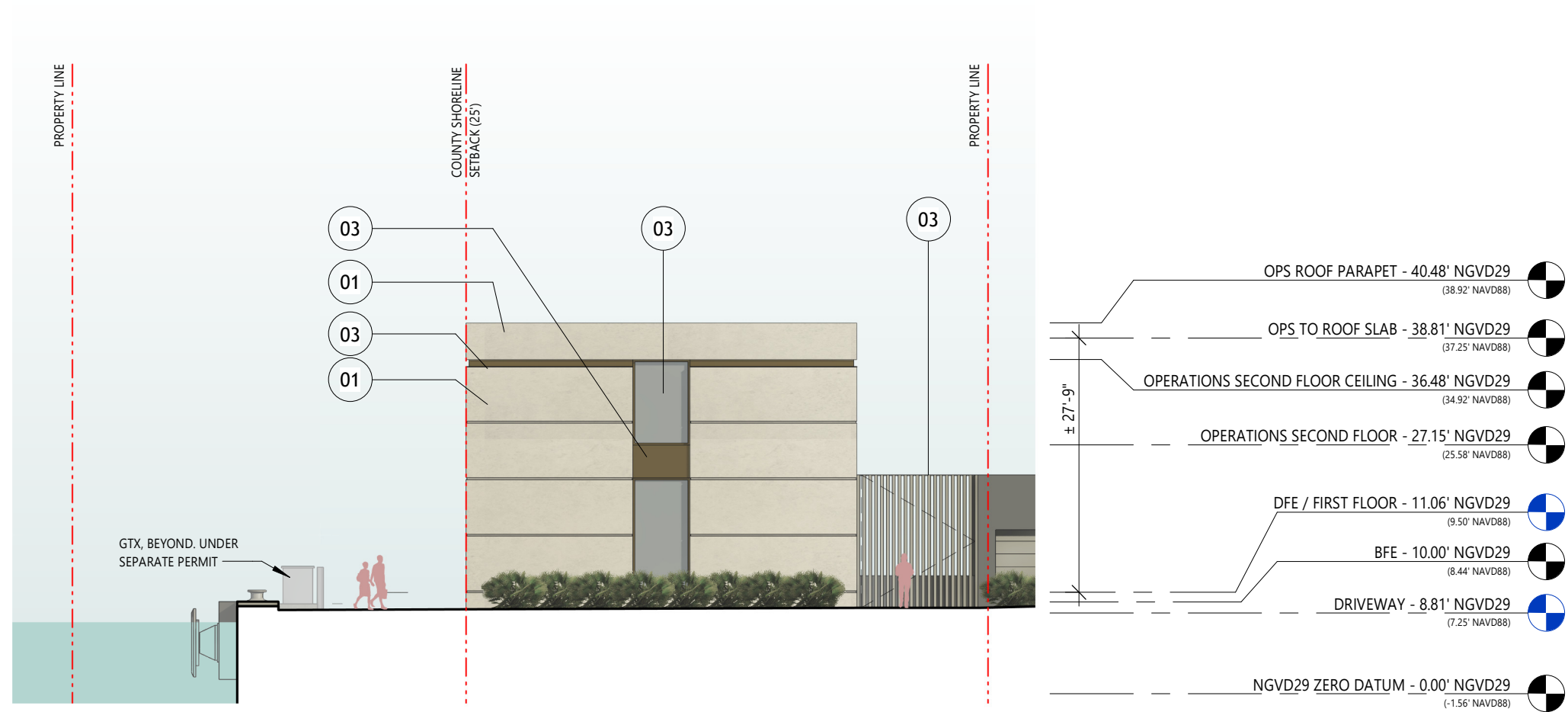
OPERATIONS LEFT ELEVATION

Dwg. no.
A65

DRB25-1121: 09-07-2025 FINAL SUBMITTAL 09/07/2025 MB

No.	Issue	Date	To

DRB25-1121: 09-07-2025 FINAL SUBMITTAL



1 MARINA OPERATIONS RIGHT ELEV.
1/16" = 1'-0"



MATERIAL LEGEND - MARINA OPERATIONS

- 01 STUCCO FINISH TO MATCH LA PERLA STONE, AT EXTERIOR WALLS
- 02 BRANCO CLASSICO LIMESTONE, AT EXTERIOR FLOOR, STAIRS, RAMPS, & OWNER'S POOL
- 03 BRONZE METAL ACCENT, PEARL GOLD (RAL 1036) METAL FINISH TO DOORS, WINDOW FRAMES & GATES
- 04 CLEAR, NON-TINTED, LOW-IRON GLASS W/ LAYER OF UV PROTECTION

BMA Project No. 2025.05.1

ONE ISLAND PARK

MIAMI BEACH, FL

BMA ARCHITECTS

P: 631.537.7277
3401 N. Miami Ave, Suite 202 Miami, FL 33127

Owner's Representative / PM:
Coastal Group Marinas
Holtec Center, 1001 N. US Hwy One,
Suite 710 Jupiter, FL 33477
P: 561.385.1429

Design Architect:
Winch Design
Parklife House, 133 Deodar Road
London SW15 2NU
P: +44 (0) 20 8392 8400

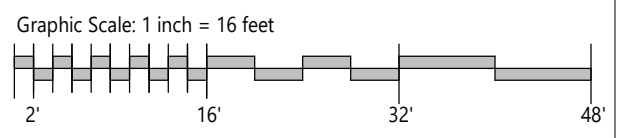
Structural Engineer:
TYLin Group
32 Old Slip 10th and 17th Floors
New York, NY 10005
P: 212.228.0662

Landscape Design Architect:
Wirtz International Landscape Architects
Botermelkdijk 464 2900 Schoten België
P: +32 (0) 3 680 13 22

Landscape Architect of Record:
Christopher Cawley Landscape Architecture
7245 NE 4th Ave, Suite 104
Miami, FL 33138
P: 786.536.2961

MEPS Engineer:
Hanington Engineering Consultants
233 Mount Airy Road, Suite 202
Basking Ridge, NJ 07920
P: 973.691.0602

Civil Engineer:
Kimley Horn
2 Alhambra Plaza, Suite 500
Coral Gables, FL 33134
P: 305.673.2025



No.	Issue	Date	To
DRB26-1176	04-03-2026 FINAL SUBMITTAL	04/05/26	COMB

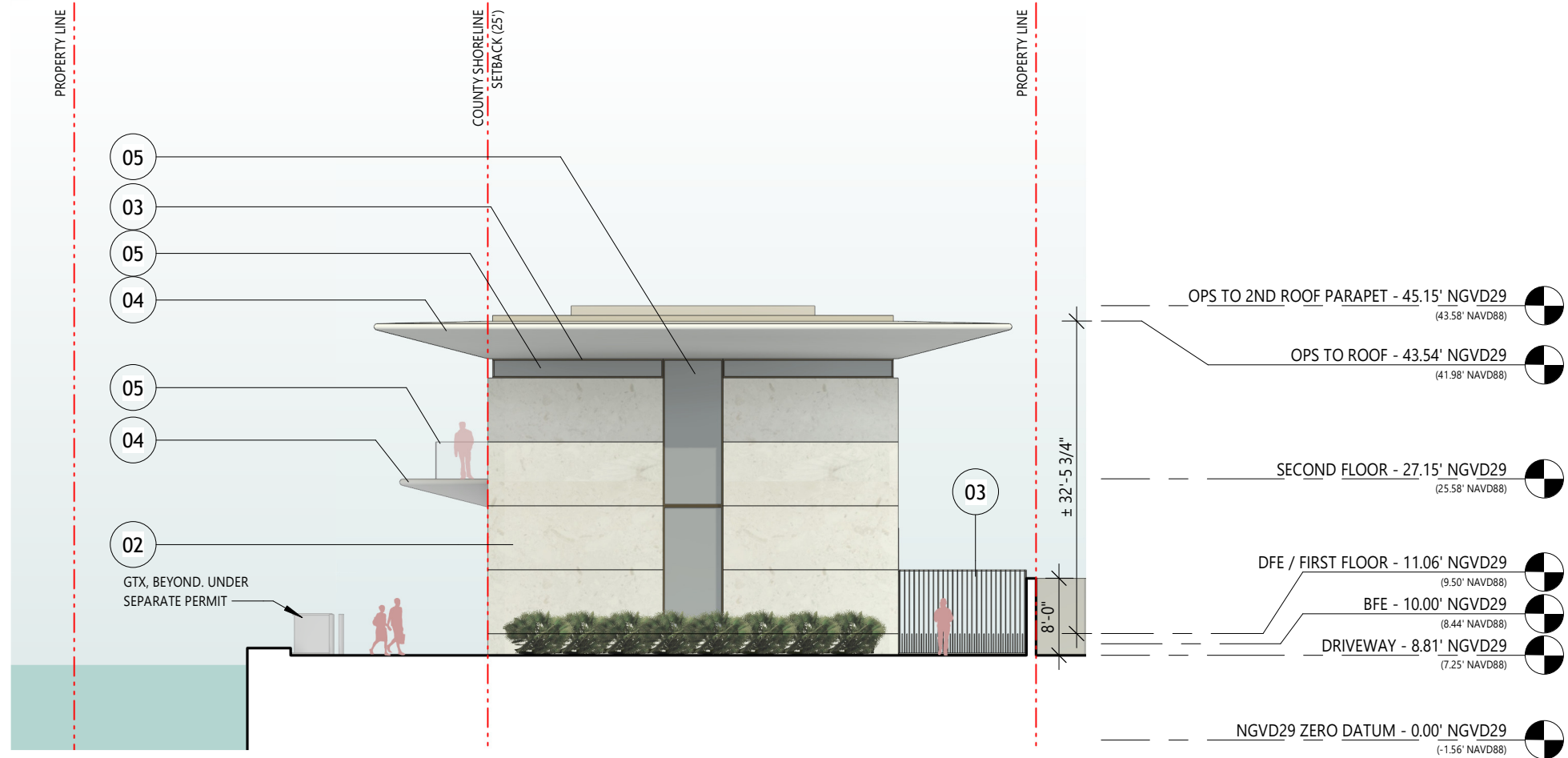
DRB26-1176: 04-03-2026 FINAL SUBMITTAL

Scale
1/16" = 1'-0"

OPERATIONS RIGHT
ELEVATION

Drawn By
GS

Dwg. no.
A66



1 MARINA OPERATIONS RIGHT ELEV.
1/16" = 1'-0"

MATERIAL LEGEND - MARINA OPERATIONS



- 02 PERLA LIMESTONE, HONED, AT EXTERIOR WALLS
- 03 PEARL GOLD (RAL 1036) METAL FINISH TO DOORS, WINDOW FRAMES & GATES
- 04 GRC LIMESTONE TO ROOFS & EXTERIOR SOFFITS
- 05 CLEAR, NON-TINTED, LOW-IRON GLASS W/ LAYER OF UV PROTECTION

BMA Project No. 2025.05.1



P: 786.409.4462
2200 NW 2nd Ave Miami, FL 33127

Project Management:
Envoie Projects
220 East 42nd Street, Suite 408
New York, NY 10017
P: 646.395.5499

Owner's Representative / PM:
Coastal Group Marinas
Holtec Center, 1001 N. US Hwy One,
Suite 710 Jupiter, FL 33477
P: 561.385.1429

Design Architect:
Winch Design
Parklife House, 133 Deodar Road
London SW15 2NU
P: +44 (0) 20 8392 8400

Structural Engineer:
TYLin Group
32 Old Slip 10th and 17th Floors
New York, NY 10005
P: 212.228.0662

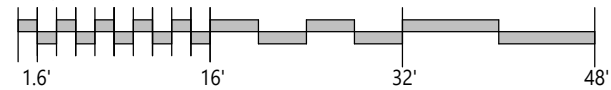
Landscape Design Architect:
Wirtz International Landscape Architects
Botermelkrijck 464 2900 Schoten België
P: +32 (0) 3 680 13 22

Landscape Architect of Record:
Christopher Cawley Landscape Architecture
7245 NE 4th Ave, Suite 104
Miami, FL 33138
P: 786.536.2961

MEPS Engineer:
Hanington Engineering Consultants
233 Mount Airy Road, Suite 202
Basking Ridge, NJ 07920
P: 973.691.0602

Civil Engineer:
Kimley Horn
2 Alhambra Plaza, Suite 500
Coral Gables, FL 33134
P: 305.673.2025

Graphic Scale: 1 inch = 16 feet



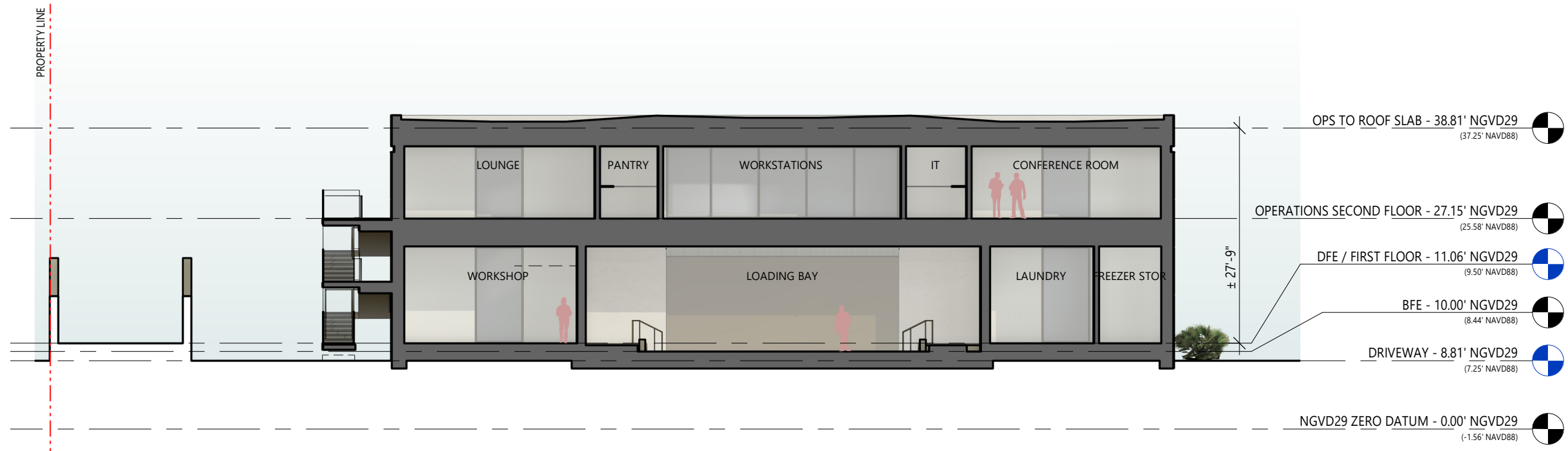
No.	Issue	Date	To
DRB25-1121-09-07-2025	FINAL SUBMITTAL	09/07/2025	MB

Scale
1/16" = 1'-0"
OPERATIONS RIGHT
ELEVATION

Drawn By
GS

Dwg. no.

A66



1 MARINA OPERATIONS SECTION
1/16" = 1'-0"

BMA Project No. 2025.05.1

ONE ISLAND PARK



MIAMI BEACH, FL

BMA
ARCHITECTS

P: 631.537.7277
3401 N. Miami Ave, Suite 202 Miami, FL 33127

Owner's Representative / PM:
Coastal Group Marinas
Holtec Center, 1001 N. US Hwy One,
Suite 710 Jupiter, FL 33477
P: 561.385.1429

Design Architect:
Winch Design
Parklife House, 133 Deodar Road
London SW15 2NU
P: +44 (0) 20 8392 8400

Structural Engineer:
TYLin Group
32 Old Slip 10th and 17th Floors
New York, NY 10005
P: 212.228.0662

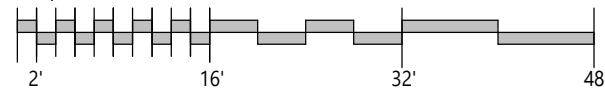
Landscape Design Architect:
Wirtz International Landscape Architects
Botermelkdijk 464 2900 Schoten België
P: +32 (0) 3 680 13 22

Landscape Architect of Record:
Christopher Cawley Landscape Architecture
7245 NE 4th Ave, Suite 104
Miami, FL 33138
P: 786.536.2961

MEPS Engineer:
Hanington Engineering Consultants
233 Mount Airy Road, Suite 202
Basking Ridge, NJ 07920
P: 973.691.0602

Civil Engineer:
Kimley Horn
2 Alhambra Plaza, Suite 500
Coral Gables, FL 33134
P: 305.673.2025

Graphic Scale: 1 inch = 16 feet



No.	Issue	Date	COMB	To
DRB26-1176: 04-03-2026	FINAL SUBMITTAL	04/05/26	COMB	

Scale
1/16" = 1'-0"

OPERATIONS SECTION

Drawn By
GS

Dwg. no.

A67



1 MARINA OPERATIONS SECTION
1/16" = 1'-0"

BMA Project No. 2025.05.1



Project Management:
Envoie Projects
220 East 42nd Street, Suite 408
New York, NY 10017
P: 646.395.5499

Owner's Representative / PM:
Coastal Group Marinas
Holtec Center, 1001 N. US Hwy One,
Suite 710 Jupiter, FL 33477
P: 561.385.1429

Design Architect:
Winch Design
Parklife House, 133 Deodar Road
London SW15 2NU
P: +44 (0) 20 8392 8400

Structural Engineer:
TYLin Group
32 Old Slip 10th and 17th Floors
New York, NY 10005
P: 212.228.0662

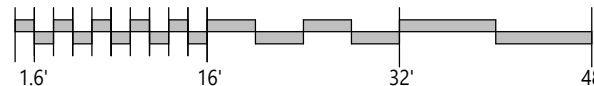
Landscape Design Architect:
Wirtz International Landscape Architects
Botermelkdijk 464 2900 Schoten België
P: +32 (0) 3 680 13 22

Landscape Architect of Record:
Christopher Cawley Landscape Architecture
7245 NE 4th Ave, Suite 104
Miami, FL 33138
P: 786.536.2961

MEPS Engineer:
Hanington Engineering Consultants
233 Mount Airy Road, Suite 202
Basking Ridge, NJ 07920
P: 973.691.0602

Civil Engineer:
Kimley Horn
2 Alhambra Plaza, Suite 500
Coral Gables, FL 33134
P: 305.673.2025

Graphic Scale: 1 inch = 16 feet



No.	Issue	Date	To
PB25-0784	09-07-2025 FINAL SUBMITTAL	09/07/2025	MB

Scale
1/16" = 1'-0"
OPERATIONS SECTION

Drawn By
GS

Dwg. no.
A67