

GROUND FLOOR PLAN



Digitally signed
by Jose L. Gomez
Date: 2026.04.04
10:42:29 -04'00'



723 LINCOLN LANE N.

ROOF TOP TOWER ELEV.
ELEV: +77'-0"

ROOF TOP TOWER ELEV.
ELEV: +71'-0"

ROOF DECK ELEV.
ELEV: +57'-0" (+62.5' NGVD)

THIRD FLOOR ELEV.
ELEV: +38'-0" (+43.5' NGVD)

SECOND FLOOR ELEV.
ELEV: +19'-0" (+24.5' NGVD)

FIRST FLOOR ELEV.
ELEV: ±0'-0" (+5.5' NGVD)

18 19

18 19

18 19

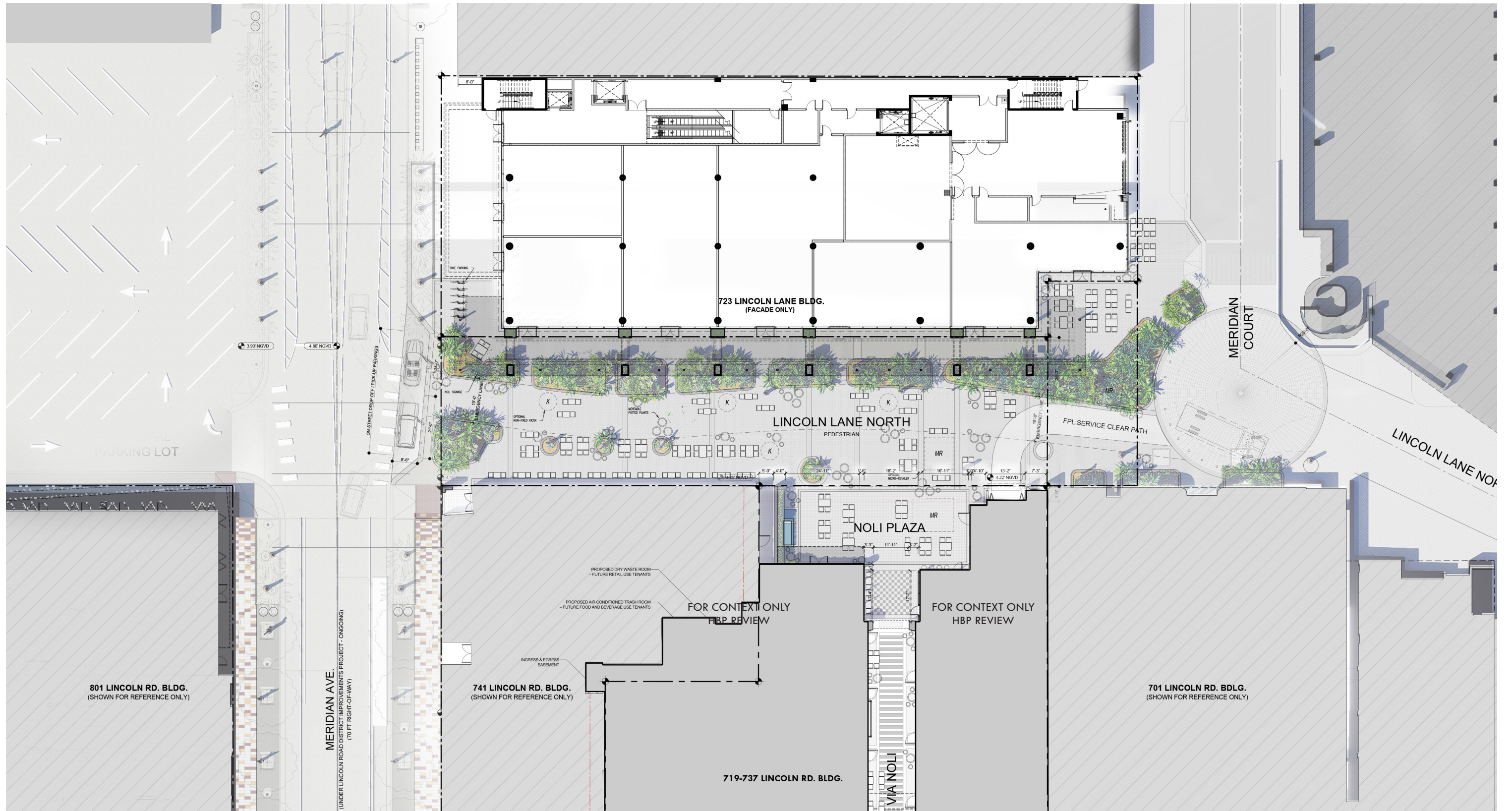
723 LINCOLN LANE N.



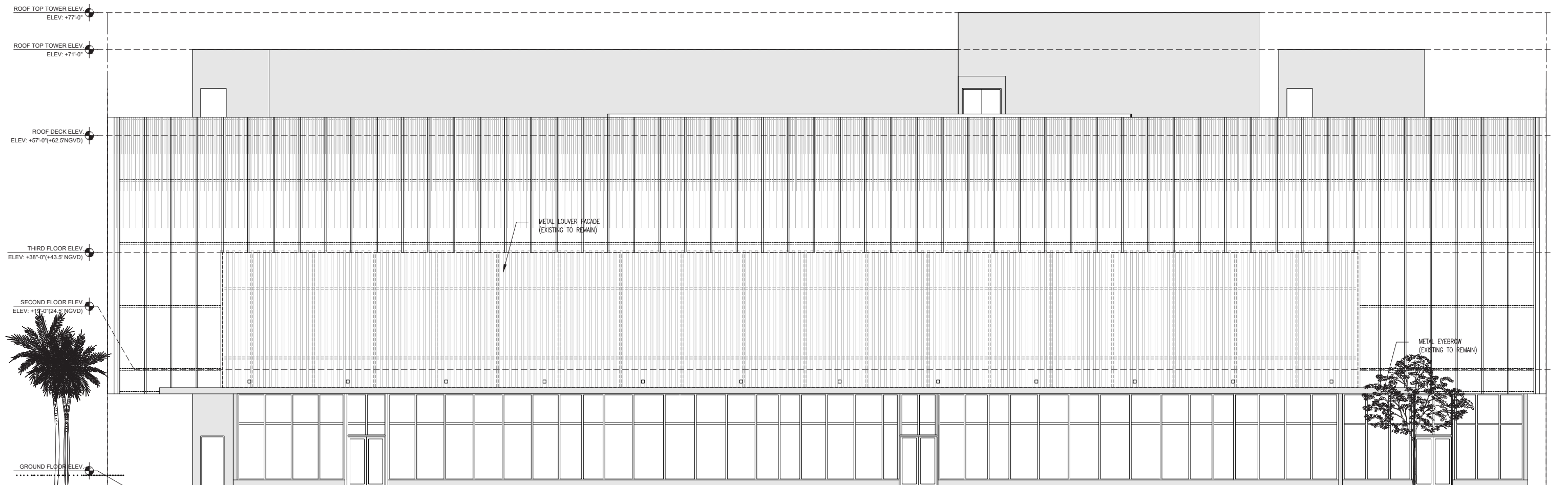
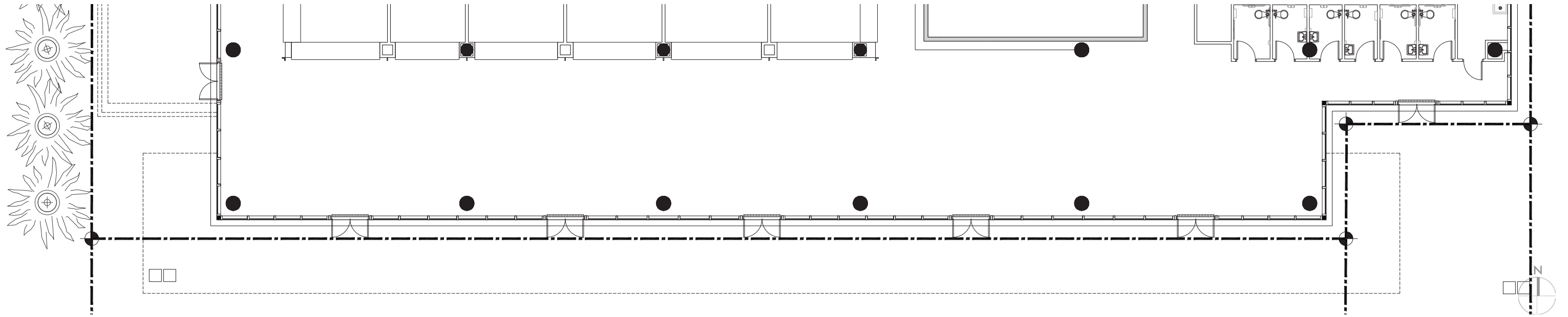
PORTION OF EXTERIOR WALL TO BE DEMOLISHED
PORTION OF EXTERIOR CMU WALL TO BE DEMOLISHED FOR FUTURE FPL PAD-MOUNTED TRANSFORMER.(UNDER SEPARATED PERMIT)

DEMOLITION KEY NOTES

- 14 MECHANICAL ROOM TO BE DEMOLISHED
- 15 EXTERIOR METAL STAIR TO BE REMOVED
- 16 EXTERIOR METAL ROOF ACCESS STAIR TO BE REMOVED
- 17 EXISTING DOOR/FRAME TO BE REMOVED AS SHOWN
- 18 EXISTING SROREFRONT TO BE REMOVED AND REPLACED
- 19 EXISTING LOW WALL TO BE DEMOLISHED
- 20 TEXTURED WALL FINISH TO BE REMOVED
- 21 EXISTING AWNING TO BE REMOVED







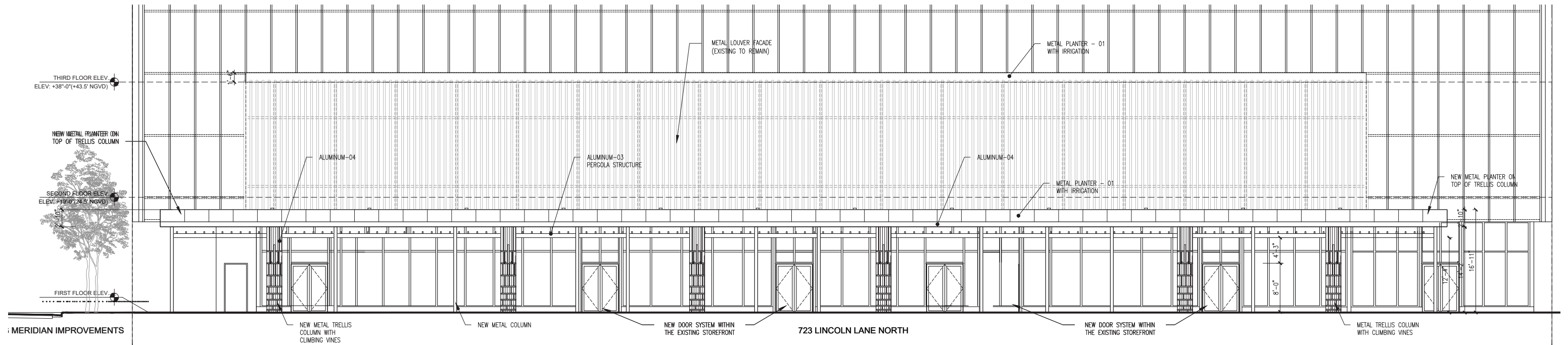
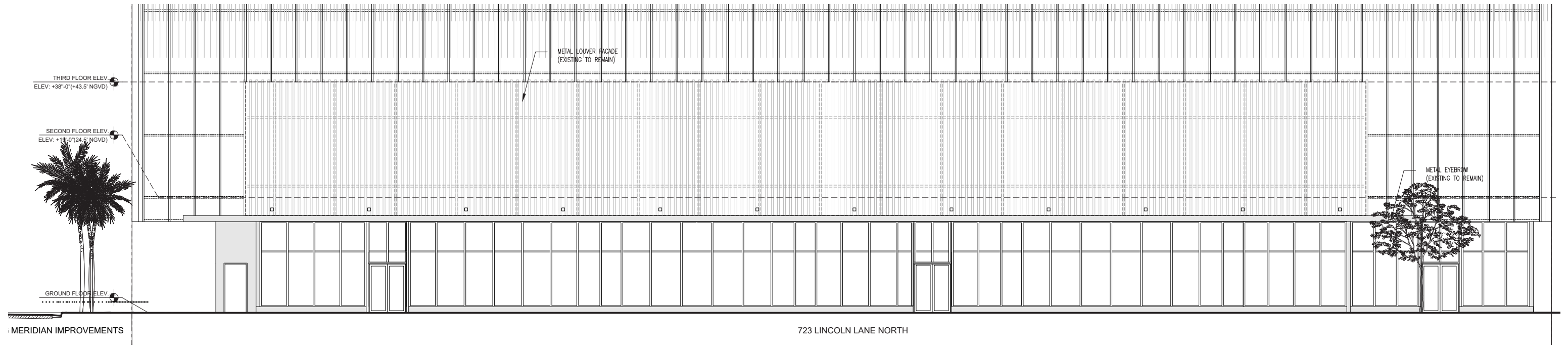
MERIDIAN IMPROVEMENTS

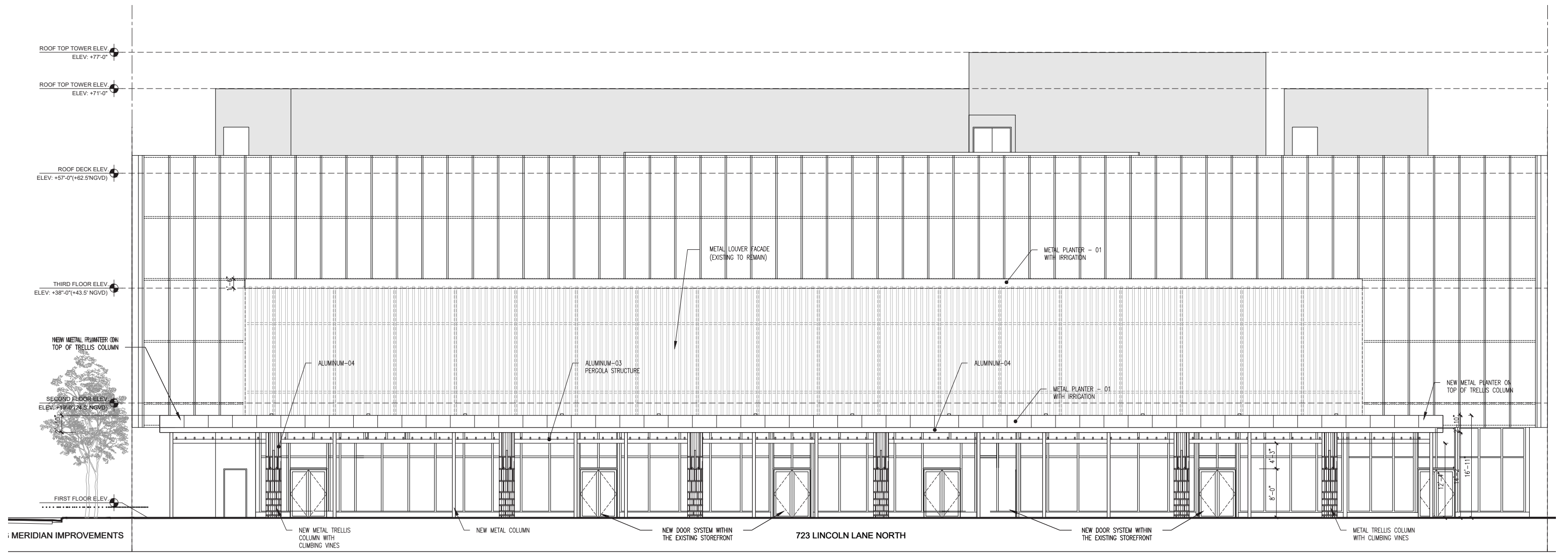
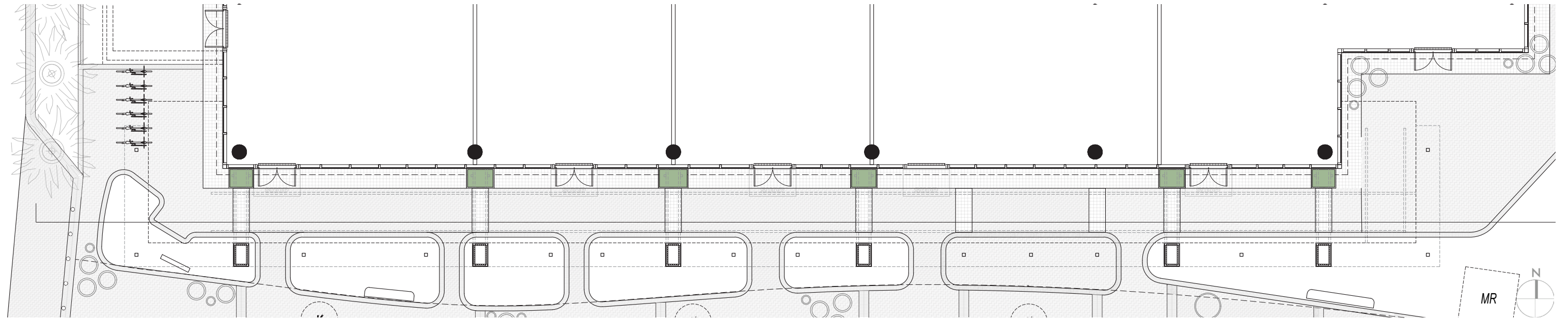
723 LINCOLN LANE NORTH



NOLi
DESIGN REVIEW BOARD | APRIL 5, 2026

EXISTING ELEVATION - SOUTH FACADE A1.11
SCALE: 1/16" = 1'-0"



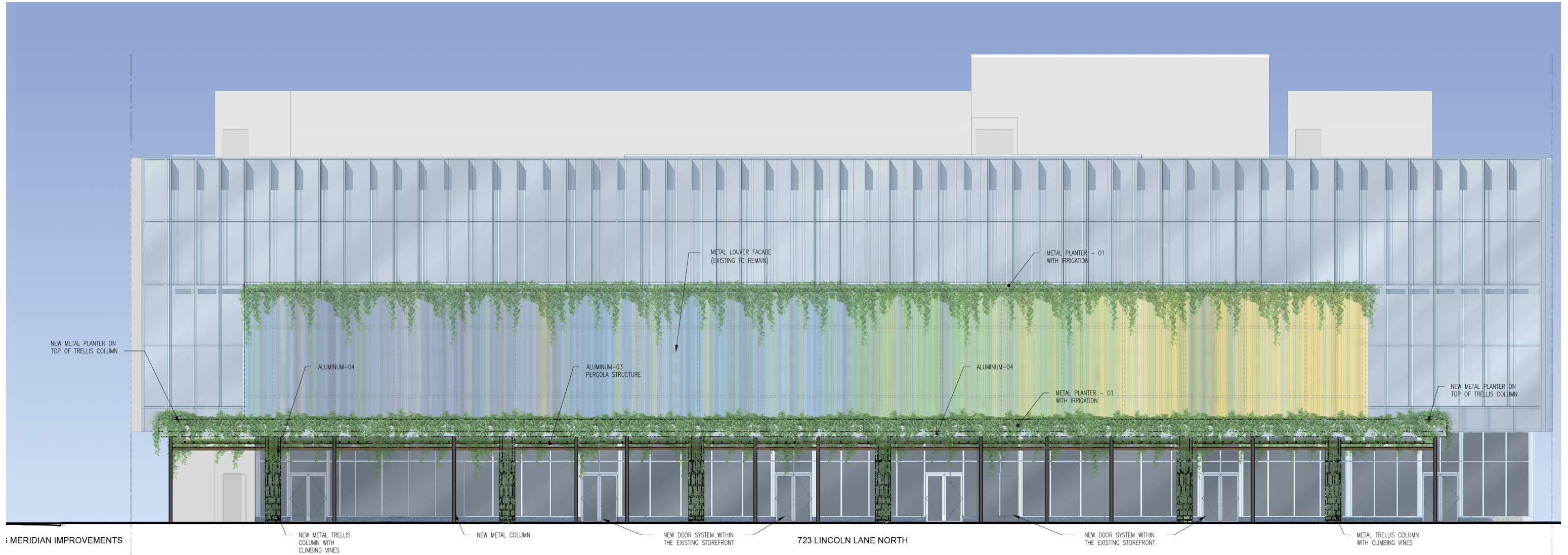


MERIDIAN IMPROVEMENTS



NOLi
 DESIGN REVIEW BOARD | APRIL 5, 2026

PROPOSED ELEVATION - SOUTH FACADE A1.13
 SCALE: 1/16" = 1'-0"



MATERIAL LEGEND:

AC-01 EXTERIOR AWNING-01	EXTERIOR AWNING, POWDER-COATED ALUMINUM FRAME WITH UV-RESISTANT, WATERPROOF FABRIC. COLOR BY TENANT
AL-01 ALUMINUM-01	ALUMINUM STRUCTURAL ELEMENTS AND BRASS METAL SURFACES TO BE FINISHED IN LIGHT BRONZE (CHAMPAGNE) POWDER COAT OR SIMILAR.
AL-02 ALUMINUM-02	ALUMINUM STRUCTURAL ELEMENTS AND BRASS METAL SURFACES FINISHED IN LIGHT WALNUT BROWN POWDER COAT OR SIMILAR.
AL-03 ALUMINUM-03	ALUMINUM CLADDING WITH WOOD-GRAIN FINISH, POWDER COATED, EXTERIOR GRADE.
AL-04 ALUMINUM-04	ALUMINUM AND STEEL STRUCTURAL ELEMENTS AND BRASS METAL SURFACES FINISHED IN DARK OXIDIZED BRONZE POWDER COAT OR SIMILAR
BRICK PAVERS	BRICK CONCRETE PAVERS - CHARCOAL AND LIGHT GREY IN HERRINGBONE AND LINEAR PATTERNS EMERGENCY VEHICLE LANE SHALL HAVE SUFFICIENT LOAD CAPACITY FOR TRUCKS
CM-01 CEMENT PLASTER-01	THREE-COAT EXTERIOR CEMENT PLASTER ON RE-INFORCED CMU WALL, SMOOTH FINISH, PAINT (COLOR TBD).
GL-01 GLASS-01	CLEAR, LAMINATED GLASS UNITS WITH LARGE MISSILE IMPACT INTERLAYER. METAL STRUCTURAL ELEMENTS, AND BRASS METAL IN LIGHT BRONZE (CHAMPAGNE) POWDER COAT FINISH, OR SIMILAR

GL-02 GLASS-02	CLEAR, LAMINATED GLASS UNITS WITH LARGE MISSILE IMPACT INTERLAYER. METAL STRUCTURAL ELEMENTS, AND BRASS METAL IN DARK OXIDIZED BRONZE POWDER COAT FINISH, OR SIMILAR.
MP-01 METAL PLANTERS-01	HEAVY DUTY, EXTERIOR GRADE, DRAINAGE-READY, COATED METAL PLANTERS
STN-01 STONE-01	3/4" LIMESTONE TILES
STN-02 STONE-02	2" X 1.25" LIMESTONE TRIM
STN-04 STONE-04	TRAVERTINE TRIM
PT-01 PORCELAIN TILE-01	3/8" PORCELAIN - TRAVERTINE FINISH TILES
T-01 TERRAZZO-01	CEMENTITIOUS TERRAZZO SURFACE ON CONCRETE CURB
T-02 TERRAZZO-02	CEMENTITIOUS TERRAZZO IN BLACK AND WHITE, WITH 1/8" LIGHT BRONZE TRIM
W-01 WOOD-01	EXTERIOR-GRADE WOOD CEILING WITH WEATHER-RESISTANT FINISH.
W-02 WOOD-02	RECLAIMED WOOD CEILING (TALLER CEILING OF VIA NOLI)
RS-01 SHADE-01	RETRACTABLE SHADE ON WEATHER-CONTROLLED SYSTEM, SUSPENDED FROM METAL "PERGOLA" STRUCTURE. UV-RESISTANT, WEATHERPROOF FABRIC (OFF-WHITE OR APPROVED EQUAL).



