



City of Miami Beach
CMB Alton rd. South PS25

New Pump Station 25 and Force Main Improvements



City of Miami Beach
FDOT Alton Rd. (South)
Pump Station #25

DRB REVIEW



INTRODUCTIONS

- City of Miami Beach
- Stantec Consulting



Agenda

- Scope Overview
- Existing site conditions
- Demolition
- Proposed Site
- FPL Upgrades
- DFE Requirements

Safety Moment

Bike Safety

- Give cyclists plenty of space – 3 feet minimum when passing
- Check mirrors and blind spots carefully before turning or changing lanes, especially right turns where bikes may be alongside you.

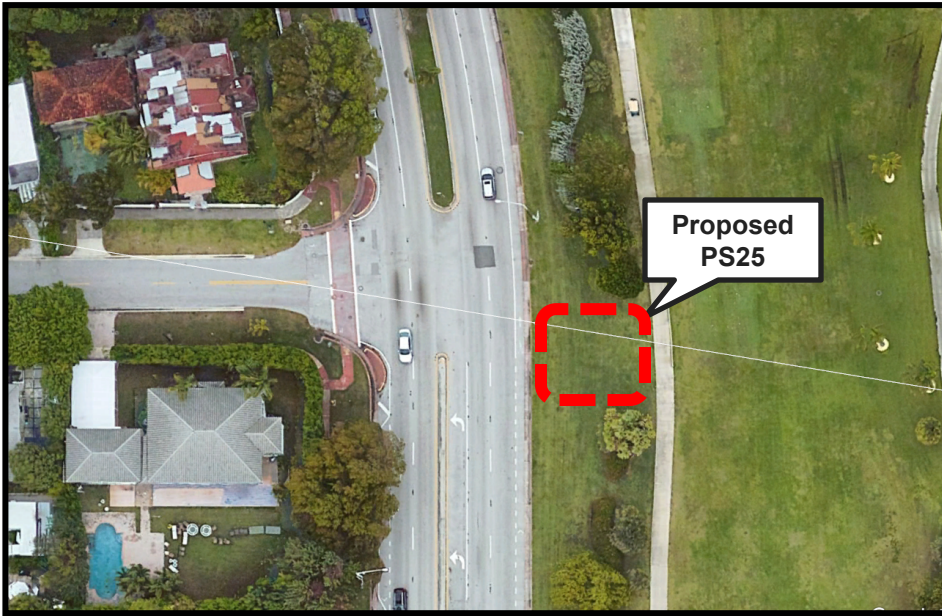


EXISTING SITE CONDITIONS

- Site location – East of the W. 27th Street & Alton Road Intersection. Lies in the property of Miami Beach Golf Club (2301 Alton Rd.)

Existing Conditions:

- Existing Ground Elevation: 2.5 NAVD88
- Existing trees & landscaping
- Existing golf course & golf cart path



DEMOLITION OVERVIEW

- Clearing & Grubbing
- Temporary Construction Fencing
- Relocation of palm trees
- Demolition of Curb & Gutter
- Temporary Golf Cart Path
 - Restoration of path to existing conditions at end of construction.
- Temporary vehicle barriers & tree protection



LOCATION MAP

Proposed PS25 Vision

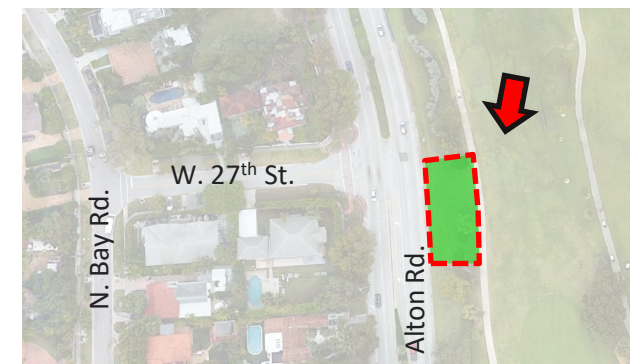
- View from Alton rd. of proposed PS site.
- PS Enclosed Site is approximately 70'x45'
- Additional 23'x20' area for new FPL Transformer
- 10' Tall Black Fencing with privacy slats and layered with 10'tall Calusia shrubs.



LOCATION MAP

Proposed PS25 Vision

- Alton Rd. Corridor sidewalk & bike lane
- New 16ft Asphalt driveway access.
- BioRem Odor Control Unit
- New wet well & valve vault
- Elevated platform for electrical equipment
- New FPL transformer
- Landscape Buffer
- Keep existing golf cart path



LOCATION MAP

PS25 LANDSCAPE BUFFER

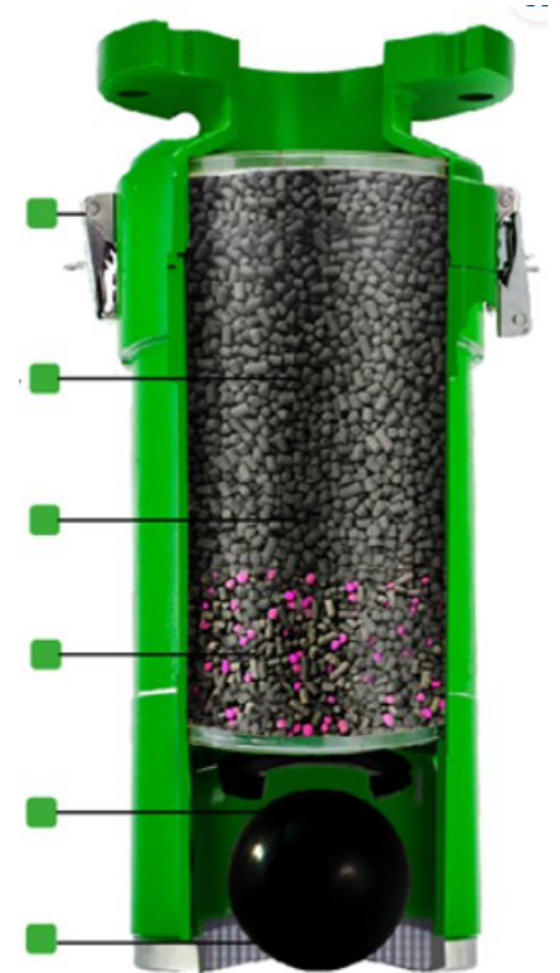
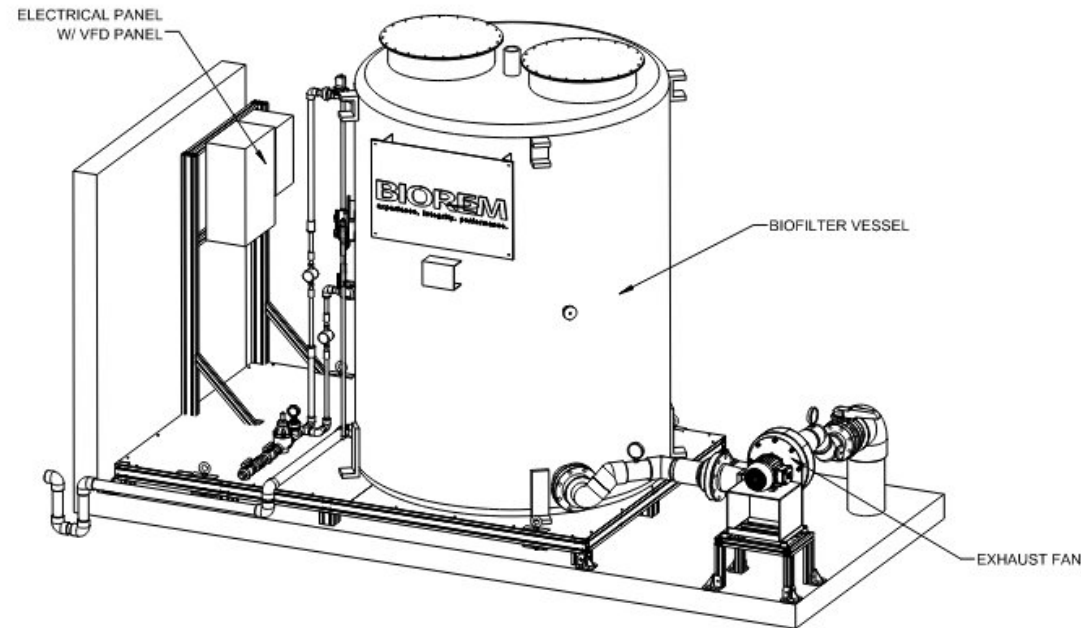
MIAMI BEACH



LOCATION MAP

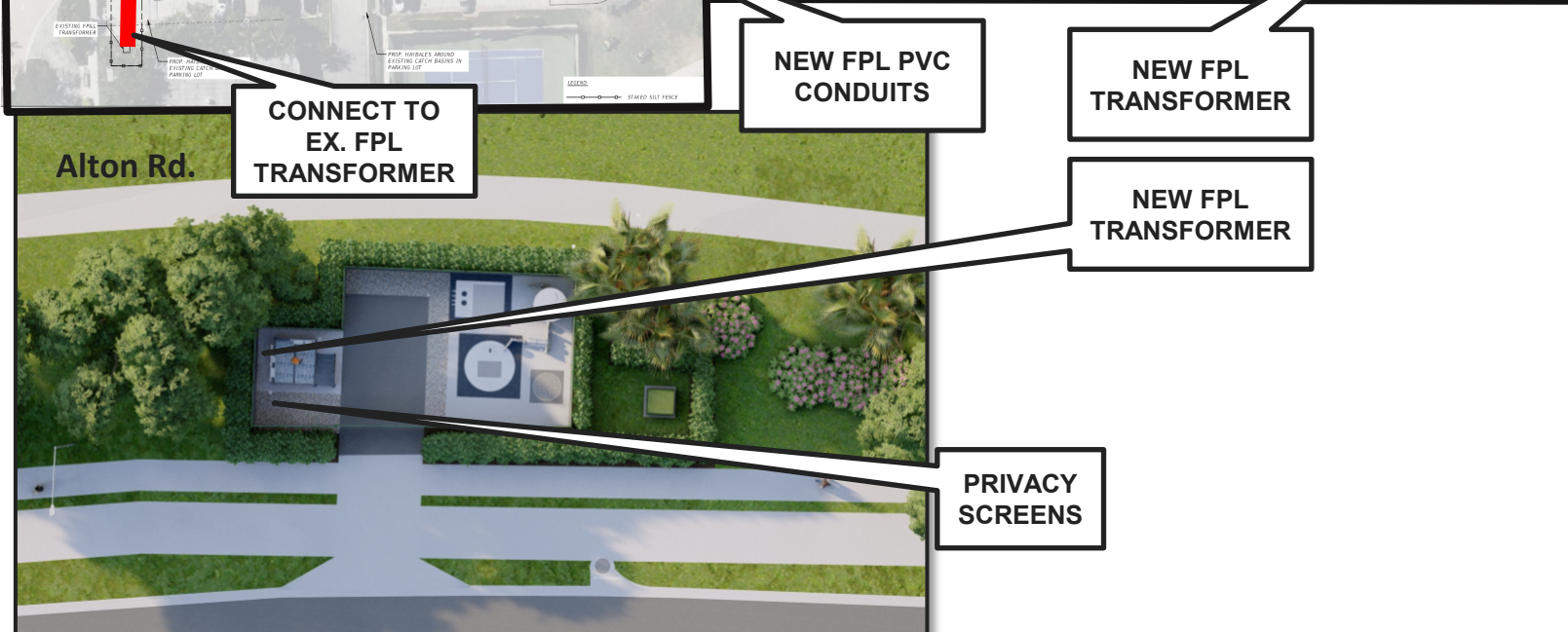
ODOR CONTROL

- BioRem Odor Control System
- Wager Odor Control Valve
- Capture and treat foul air generated by wet well



FPL UPGRADES

- New FPL pad mounted Transformer (XFMR)
- New FPL conduits along parking lot
- Privacy shrubs around (XFMR) will be taller than height of (XFMR)



LOCATION MAP

DFE REQUIREMENTS

- ❑ Design Flood Elevation (DFE) = **9.45 NAVD88. (11 ft NGVD29)**
- ❑ Bottom Elevation of electrical equipment > **9.45 NAVD88. (11 ft NGVD29)**
- ❑ Top of Grated (T/G) Platform elevation: **7.75 NAVD88 (9.30 ft NGVD29)**

