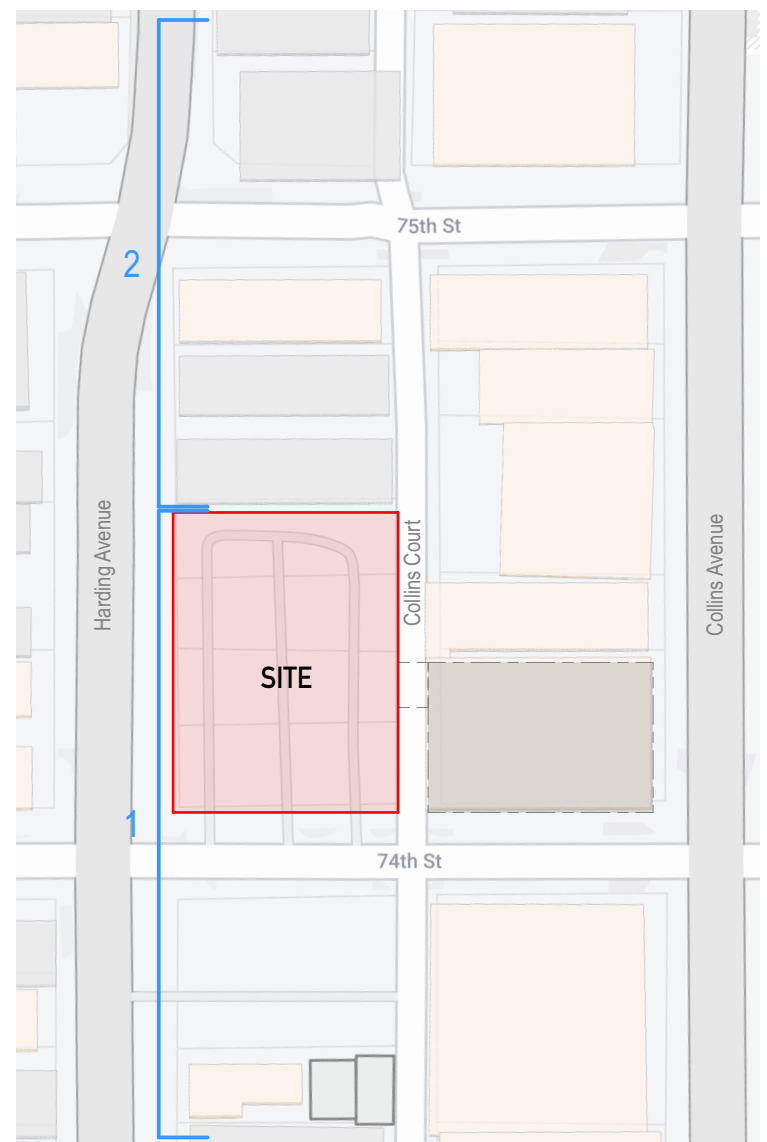


1/32" = 1'-0" CONTEXT ELEVATION-HARDING AVE 1

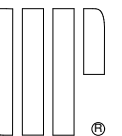
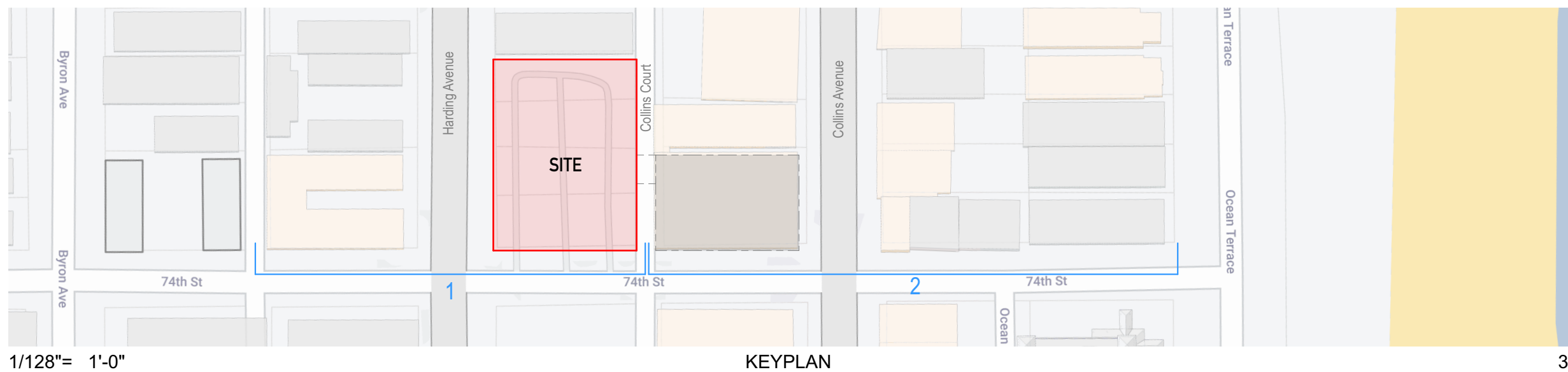
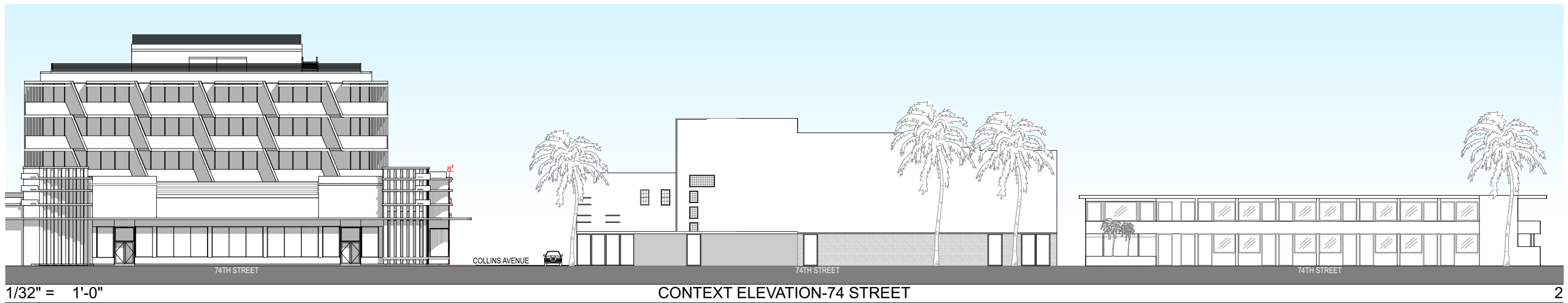
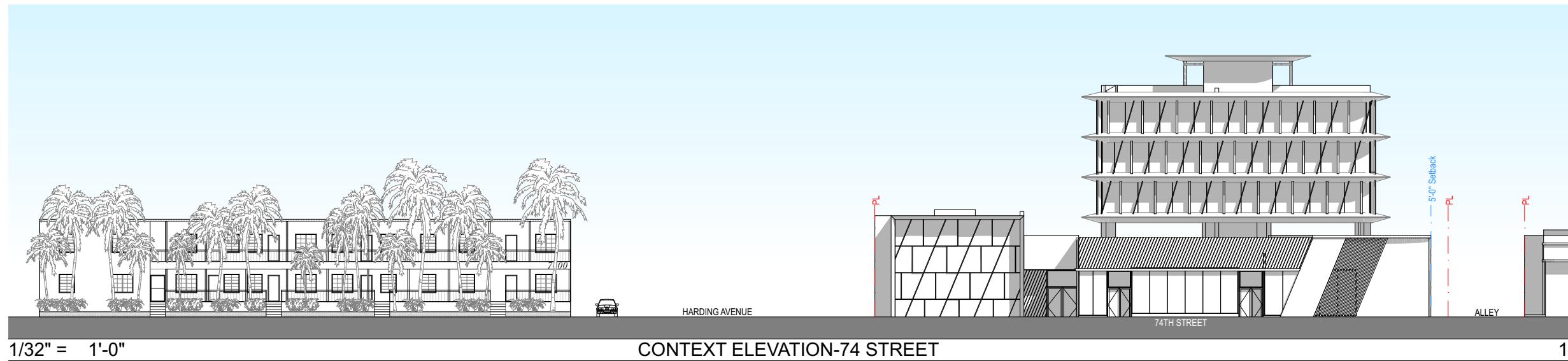


1/32" = 1'-0" CONTEXT ELEVATION-HARDING AVE 2



1/128" = 1'-0" KEYPLAN 3







HARDING AVENUE

COLLINS COURT

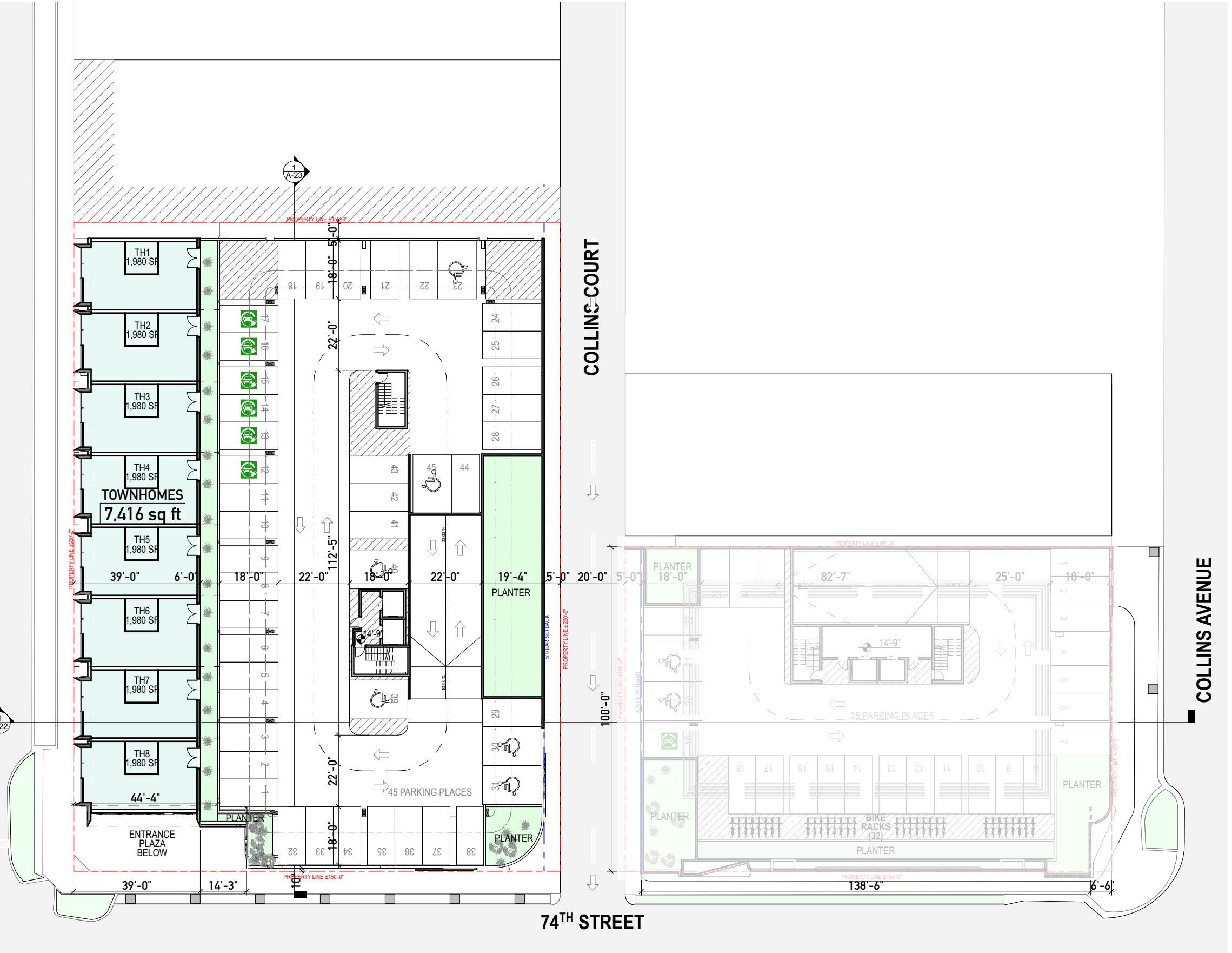
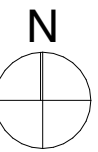
COLLINS AVENUE

74<sup>TH</sup> STREET

1/32" = 1'-0"

SECOND LEVEL

1



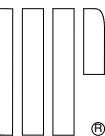
A-16

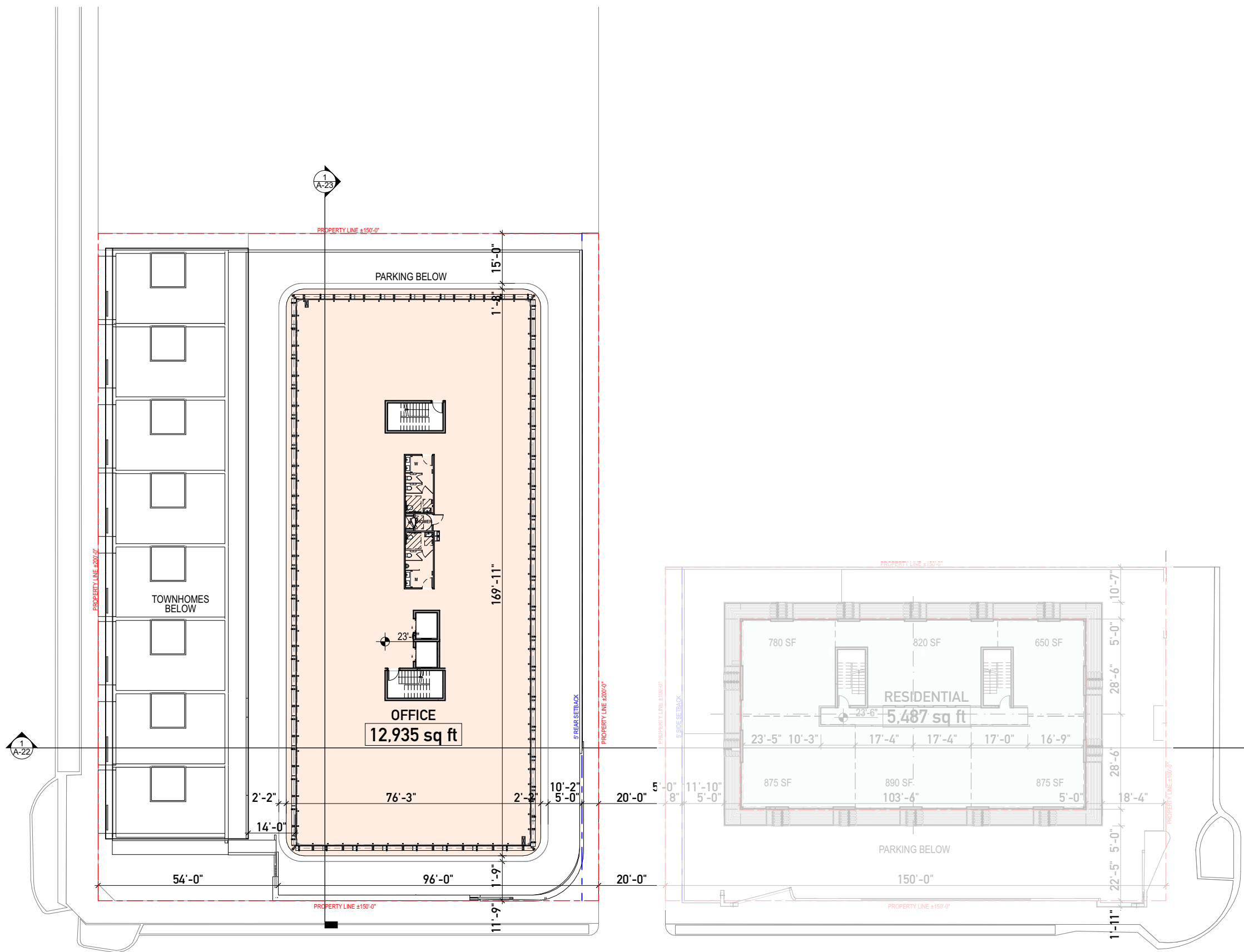
7401-7425 HARDING AVENUE

HARDING FINAL HPB SUBMITTAL  
URBAN ROBOT © 2024  
AR#99232 Sebastian Velez

OVERALL SECOND FLOOR - PARKING

5/6/24

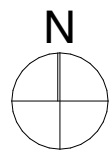




1/32" = 1'-0"

THIRD LEVEL

1



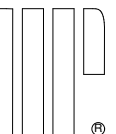
A-17

7401-7425 HARDING AVENUE

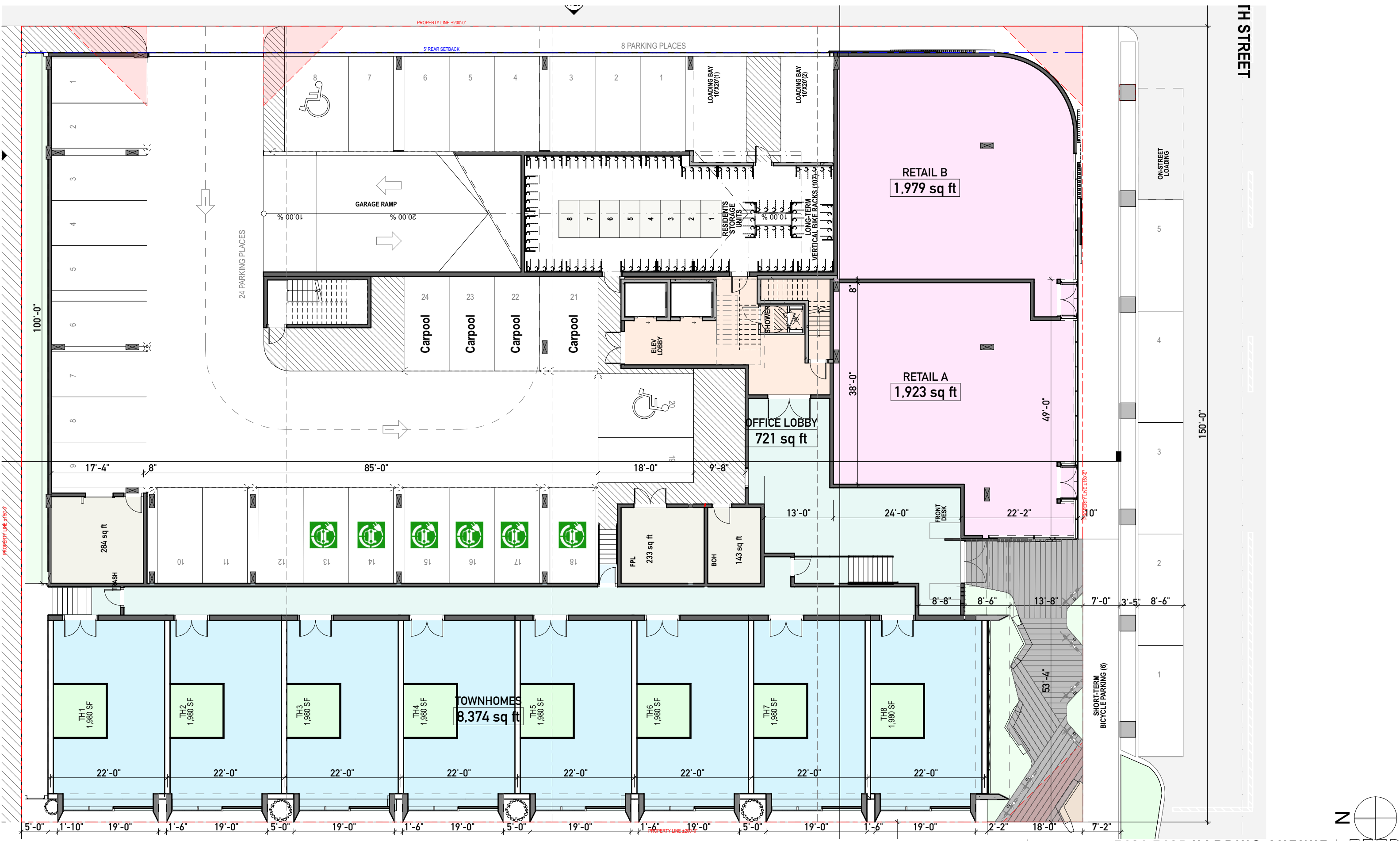
OVERALL THIRD - FIFTH FLOOR

5/6/24

HARDING FINAL HPB SUBMITTAL  
URBAN ROBOT © 2024  
AR#99232 Sebastian Velez





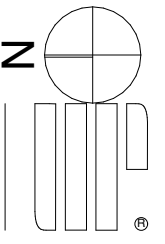


JH STREET

ON-STREET LOADING

150'-0"

SHORT-TERM BICYCLE PARKING (6)

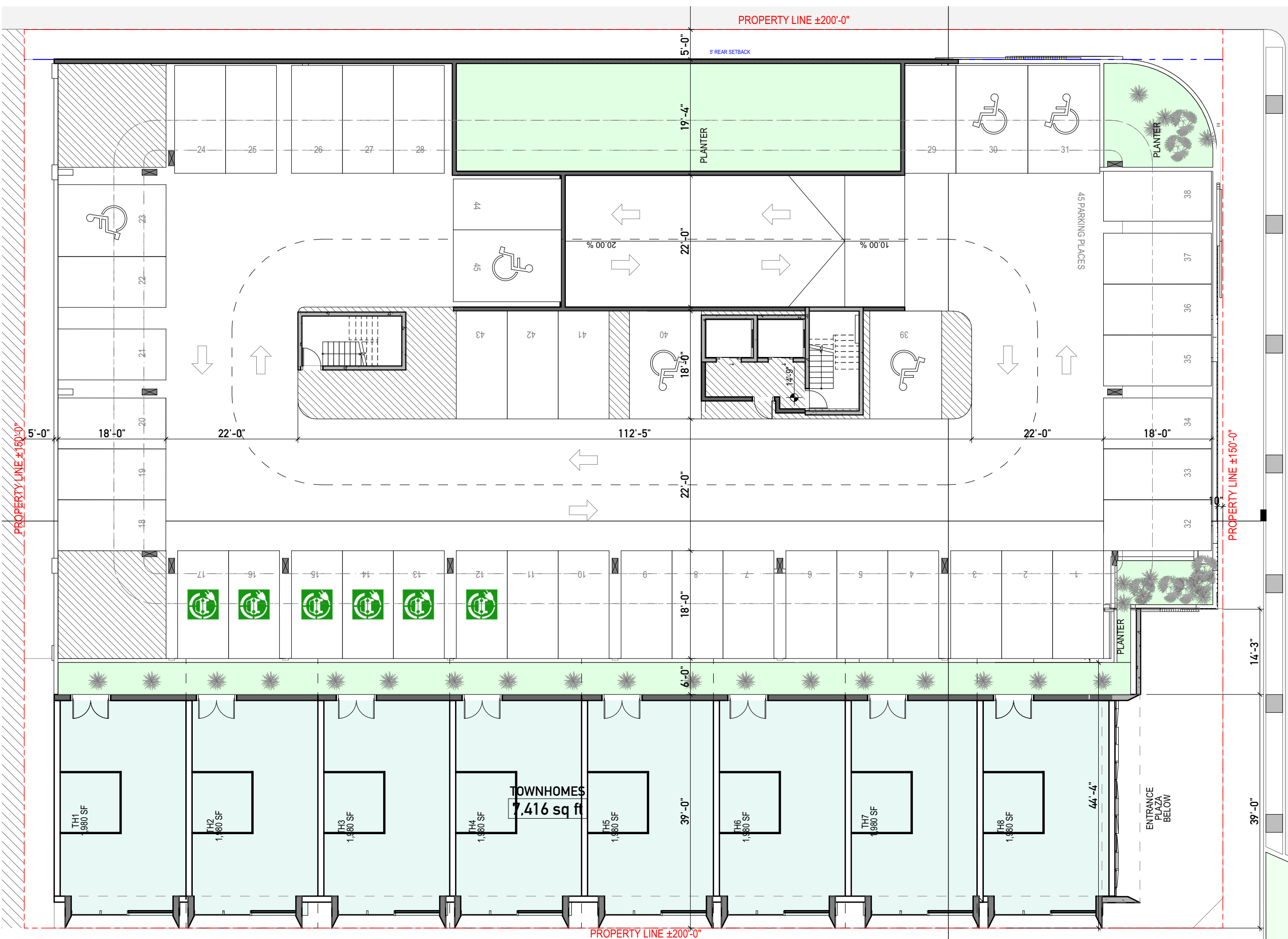


A-19

7401-7425 HARDING AVENUE

ENLARGED GROUND FLOOR 5/6/24

HARDING FINAL HPB SUBMITTAL  
 URBAN ROBOT © 2024  
 AR#99232 Sebastian Velez



PROPERTY LINE ±200'-0"

5' REAR SETBACK

TH STREET

PROPERTY LINE ±150'-0"

PROPERTY LINE ±150'-0"

PROPERTY LINE ±200'-0"

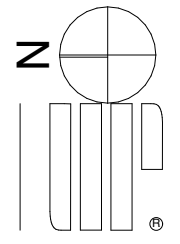
TOWNHOMES  
7,416 sq ft

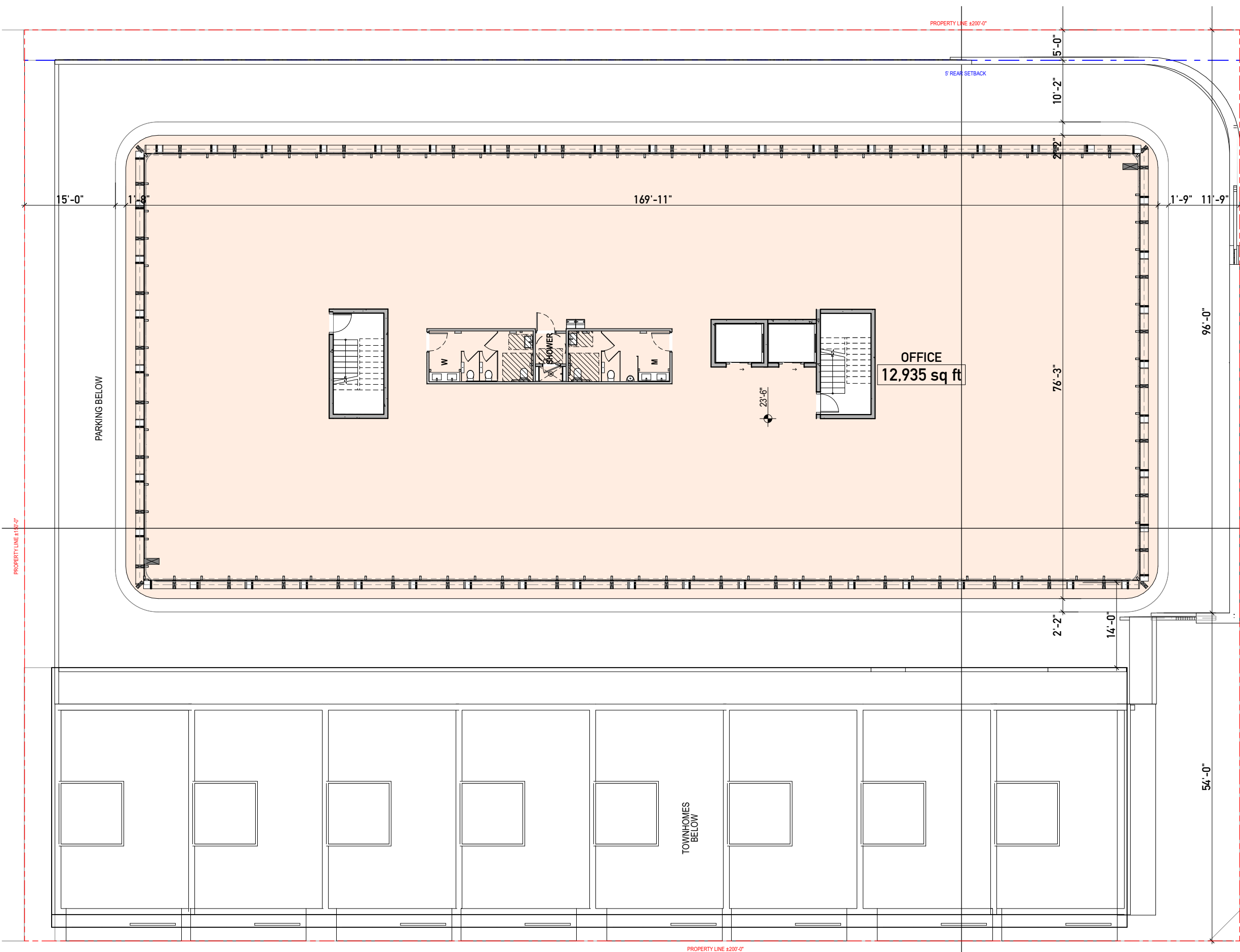
A-20

7401-7425 HARDING AVENUE

ENLARGED SECOND FLOOR 5/6/24

HARDING FINAL HPB SUBMITTAL  
URBAN ROBOT © 2024  
AR#99232 Sebastian Velez





PROPERTY LINE ±200'-0"

5' REAR SETBACK

5'-0"

10'-2"

2'-2"

76'-3"

2'-2"

14'-0"

1'-9"

11'-9"

96'-0"

54'-0"

169'-11"

15'-0"

1'-6"

PARKING BELOW

OFFICE  
12,935 sq ft

23'-6"

TOWNHOMES  
BELOW

PROPERTY LINE ±187'-0"

PROPERTY LINE ±192'-0"

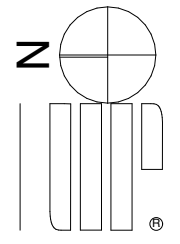
PROPERTY LINE ±200'-0"

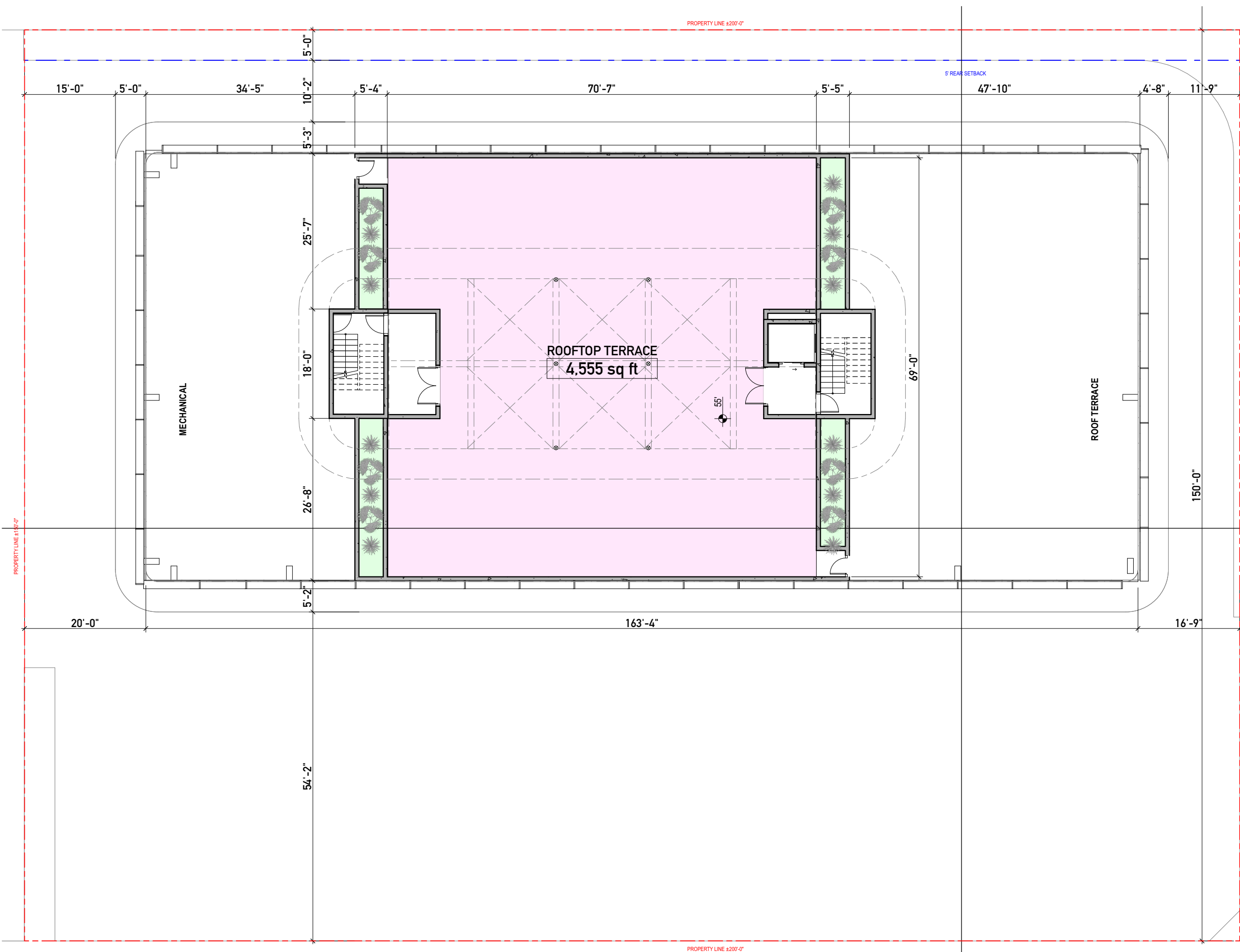
A-21

ENLARGED THIRD - FIFTH FLOOR 5/6/24

7401-7425 HARDING AVENUE

HARDING FINAL HPB SUBMITTAL  
URBAN ROBOT © 2024  
AR#99232 Sebastian Velez





PROPERTY LINE ±200'-0"

5' REAR SETBACK

PROPERTY LINE ±18'-0"

PROPERTY LINE ±19'-0"

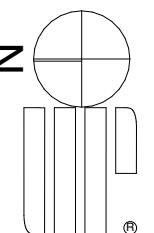
PROPERTY LINE ±200'-0"

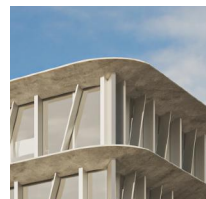
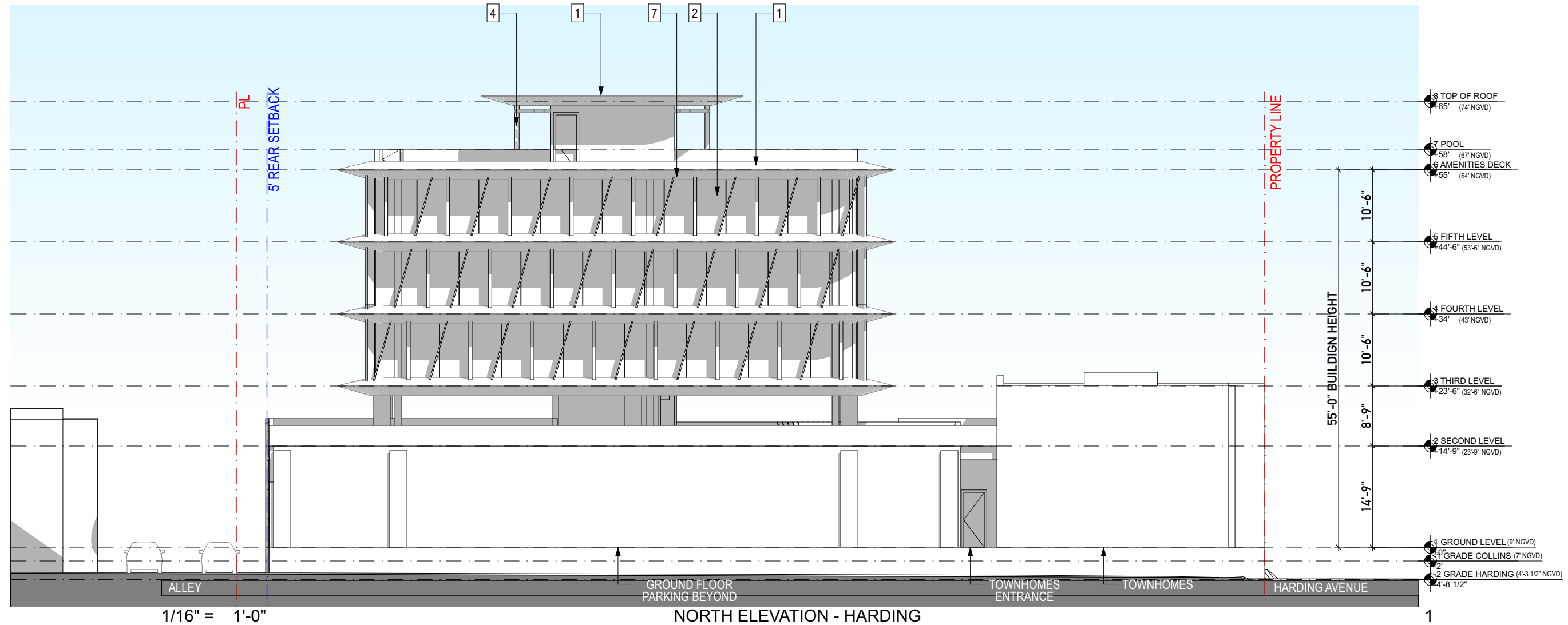
A-22

7401-7425 HARDING AVENUE

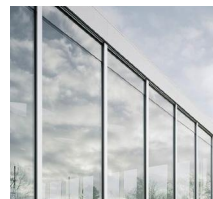
ENLARGED ROOF TOP 5/6/24

HARDING FINAL HPB SUBMITTAL  
 URBAN ROBOT © 2024  
 AR#99232 Sebastian Velez

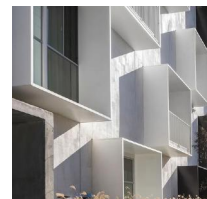




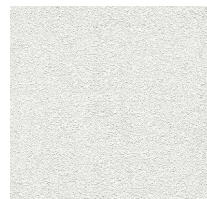
1 CUSTOM POURED CONCRETE SLAB



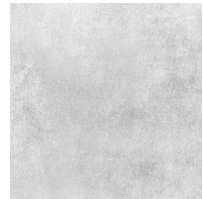
2 CLEAR GLASS GLAZING WITH ANODIZED METAL ALUMINUM



3 ALUMINUM METAL FRAME



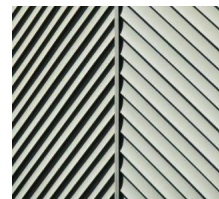
4 EXTERIOR WHITE STUCCO



5 LIGHT POURED CONCRETE FINISH



6 18" HIGH KNEEWALL, 4"x4" WHITE TILE



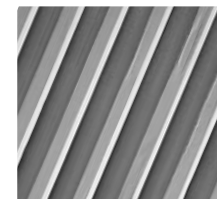
7 ALUMINUM WHITE POWDER-COATED LOUVERS



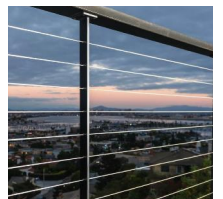
8 CUSTOM SLAB FEATURE WALL



9 MULTICOLOR POWDER-COATED LOUVERS



10 NEW FLUTED CONCRETE



11 ROOFTOP WIRE RAILING

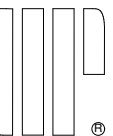
A-23

7401-7425 HARDING AVENUE

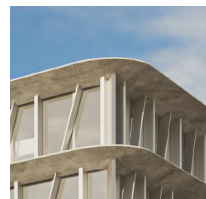
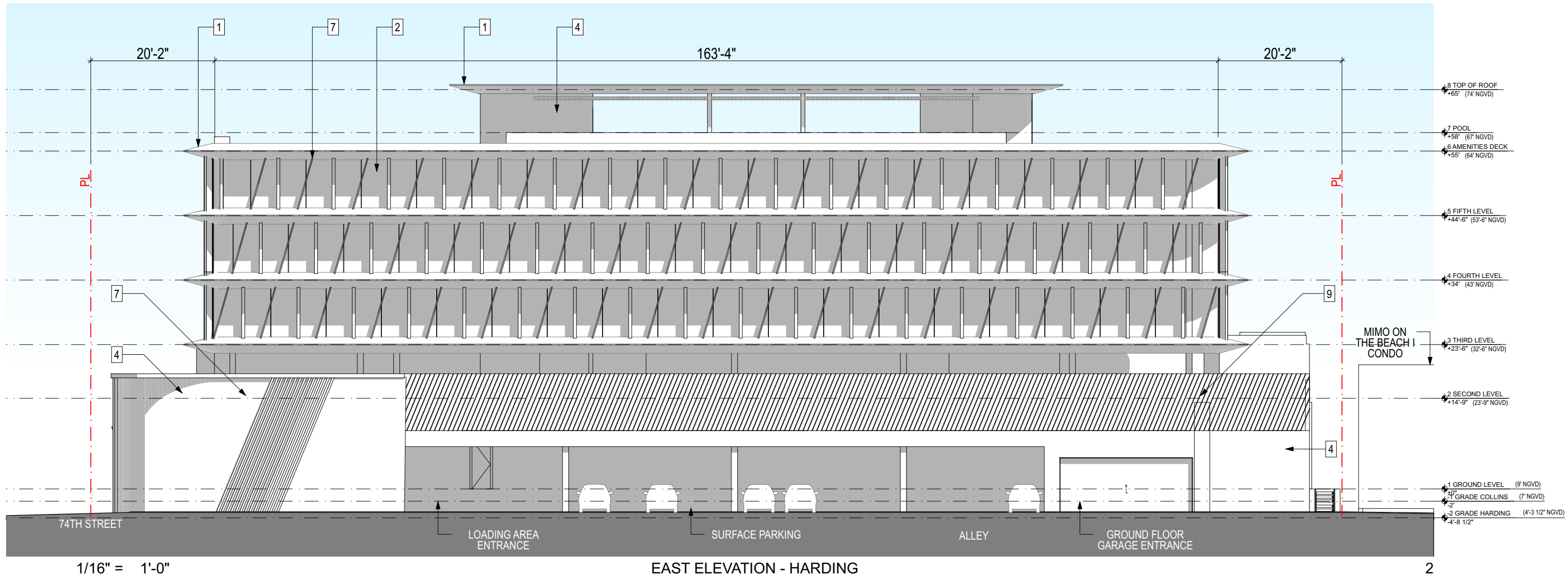
NORTH ELEVATION

5/6/24

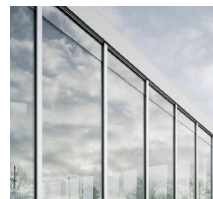
HARDING FINAL HPB SUBMITTAL  
URBAN ROBOT © 2024  
AR#99232 Sebastian Velez



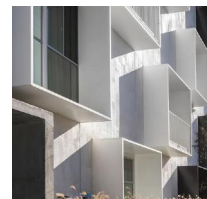




1 CUSTOM POURED CONCRETE SLAB



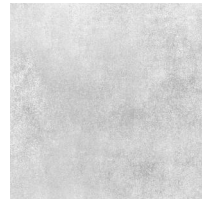
2 CLEAR GLASS GLAZING WITH ANODIZED METAL ALUMINUM



3 ALUMINUM METAL FRAME



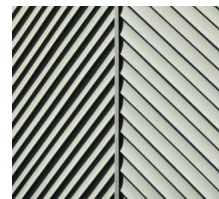
4 EXTERIOR WHITE STUCCO



5 LIGHT POURED CONCRETE FINISH



6 18" HIGH KNEEWALL, 4"x4" WHITE TILE



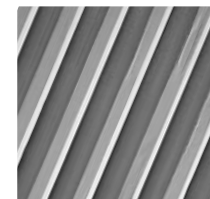
7 ALUMINUM WHITE POWDER-COATED LOUVERS



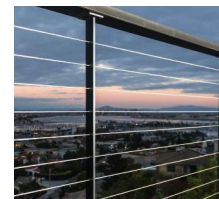
8 CUSTOM SLAB FEATURE WALL



9 MULTICOLOR POWDER-COATED LOUVERS



10 NEW FLUTED CONCRETE



11 ROOFTOP WIRE RAILING

A-25

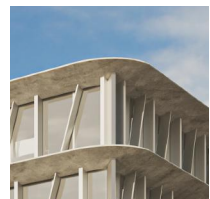
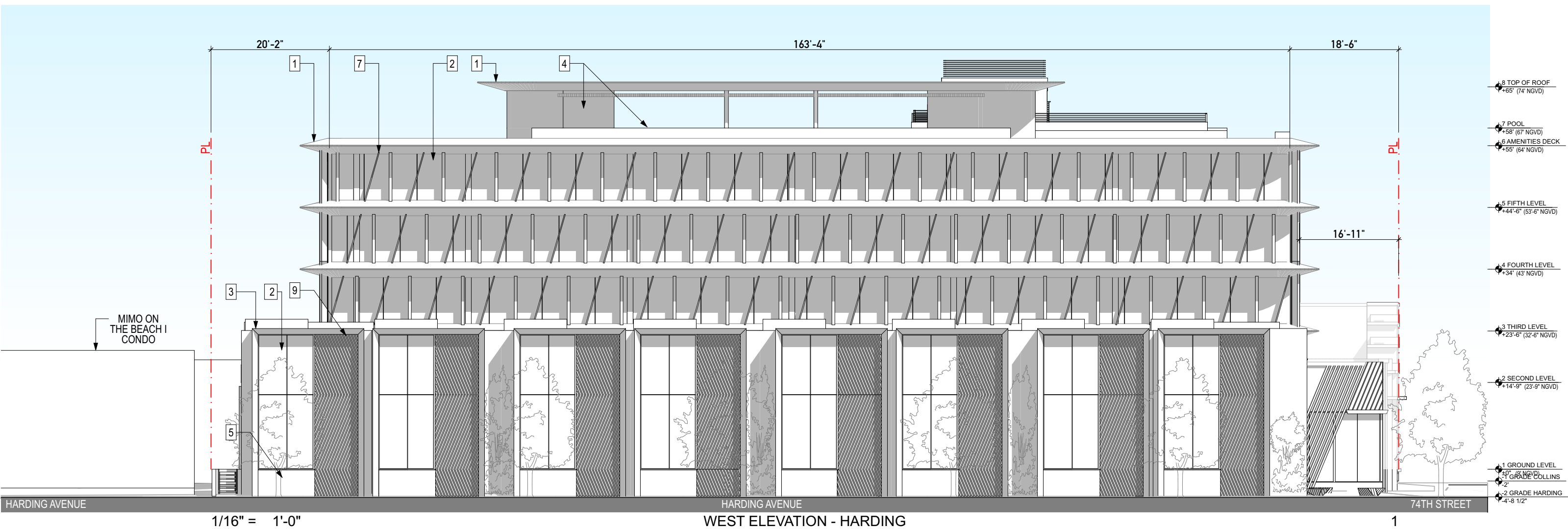
7401-7425 HARDING AVENUE

EAST ELEVATION

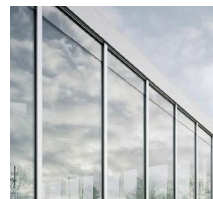
5/6/24

HARDING FINAL HPB SUBMITTAL  
URBAN ROBOT © 2024  
AR#99232 Sebastian Velez

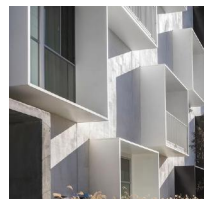




1 CUSTOM POURED CONCRETE SLAB



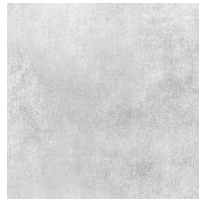
2 CLEAR GLASS GLAZING WITH ANODIZED METAL ALUMINUM



3 ALUMINUM METAL FRAME



4 EXTERIOR WHITE STUCCO



5 LIGHT POURED CONCRETE FINISH



6 18" HIGH KNEEWALL, 4"X4" WHITE TILE



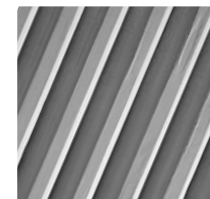
7 ALUMINUM WHITE POWDER-COATED LOUVERS



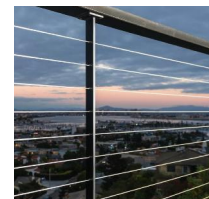
8 CUSTOM SLAB FEATURE WALL



9 MULTICOLOR POWDER-COATED LOUVERS



10 NEW FLUTED CONCRETE



11 ROOFTOP WIRE RAILING

A-26

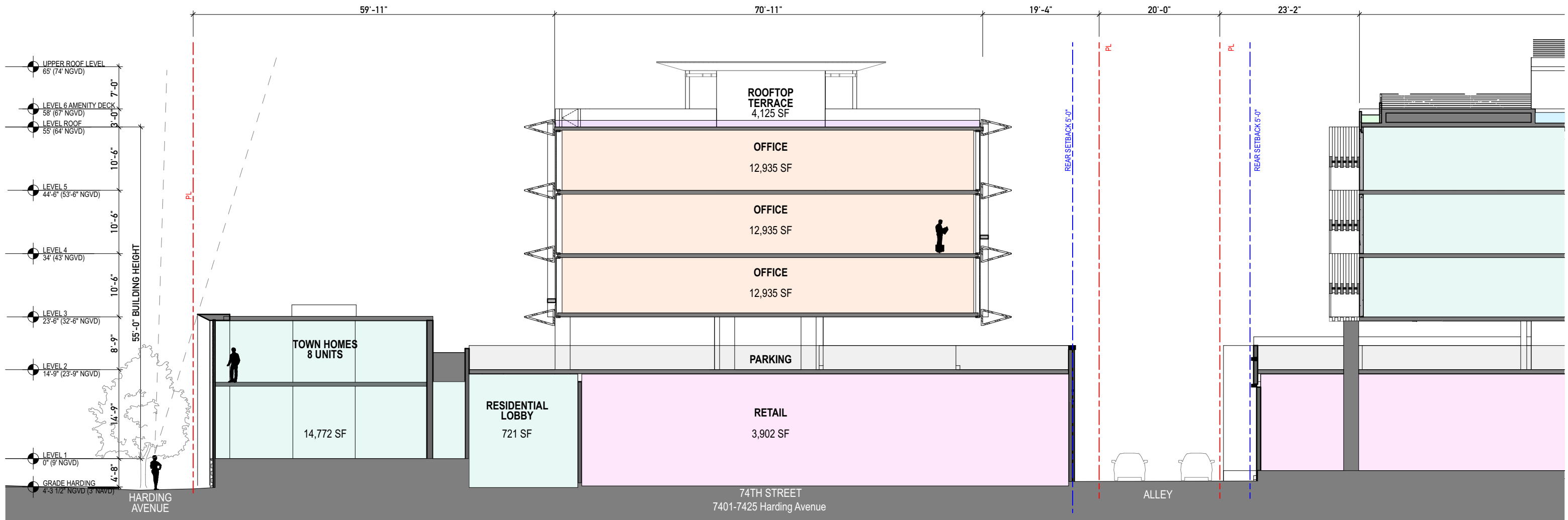
7401-7425 HARDING AVENUE

WEST ELEVATION

5/6/24

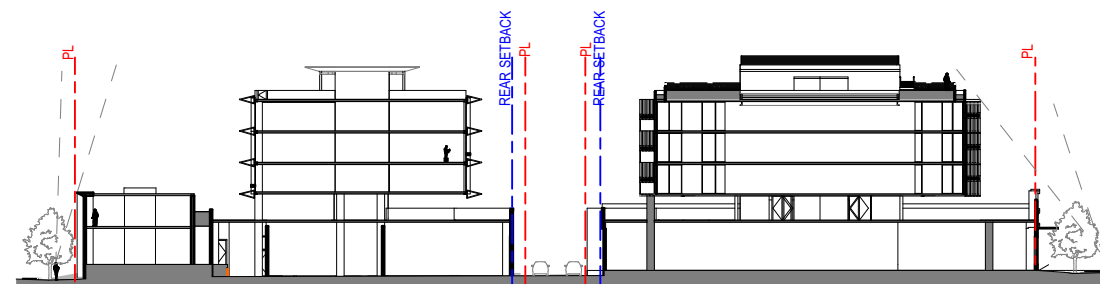
HARDING FINAL HPB SUBMITTAL  
URBAN ROBOT © 2024  
AR#99232 Sebastian Velez





1/16" = 1'-0"

CROSS SECTION



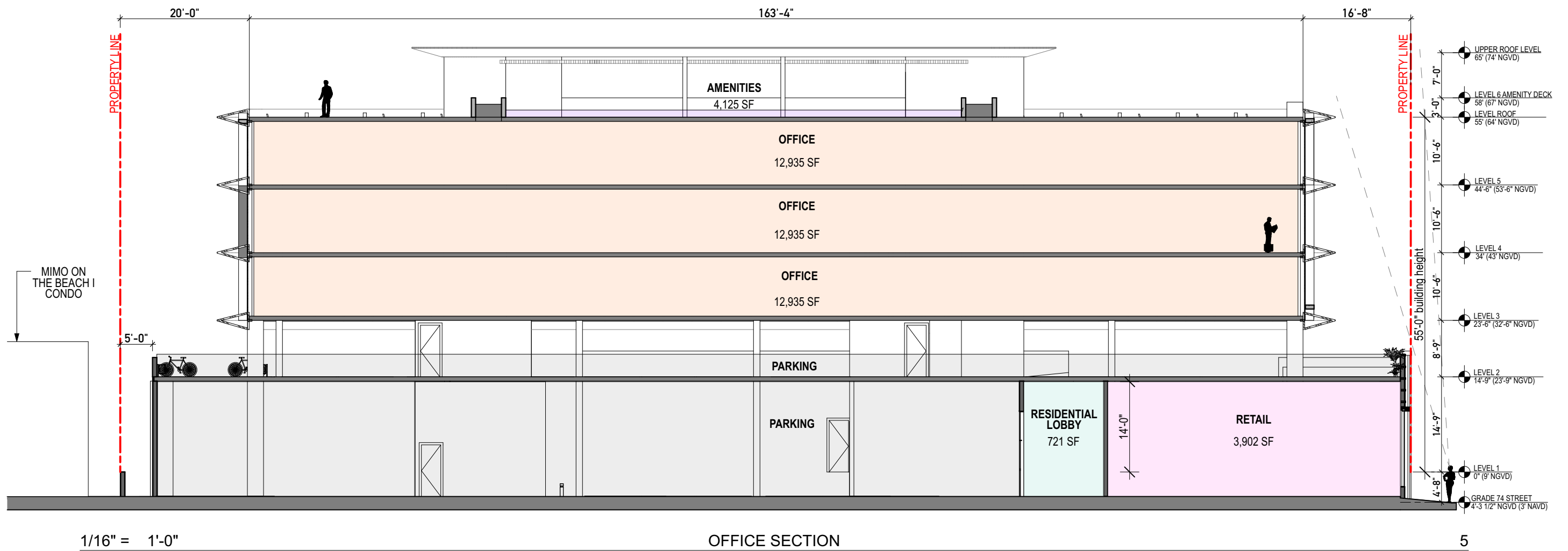
KEY SECTION

A-27

7401-7425 HARDING AVENUE

HARDING FINAL HPB SUBMITTAL  
 URBAN ROBOT © 2024  
 AR#99232 Sebastian Velez



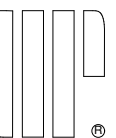


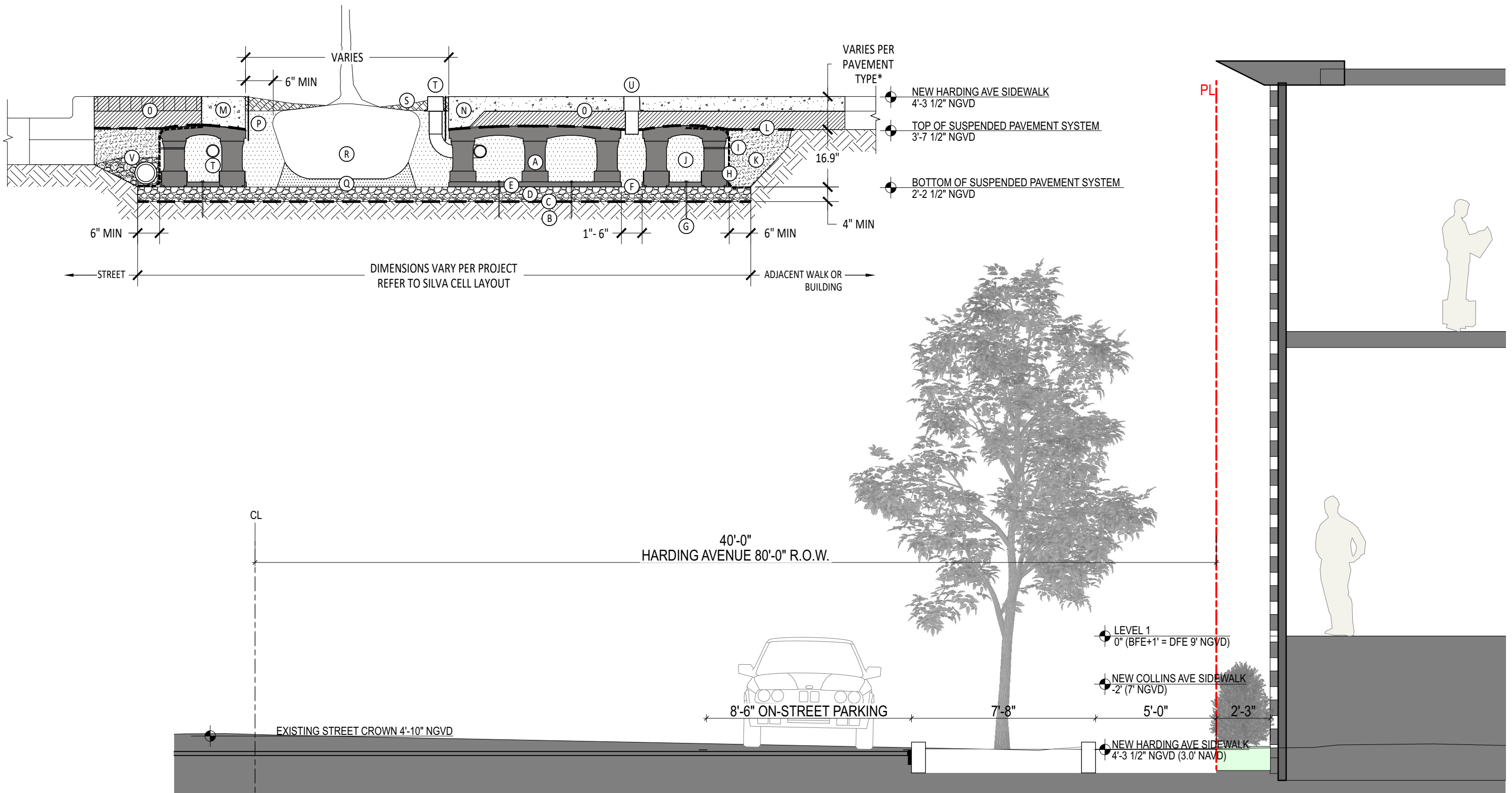
A-28

7401-7425 HARDING AVENUE

LONGITUDINAL SECTION 5/6/24

HARDING FINAL HPB SUBMITTAL  
URBAN ROBOT © 2024  
AR#99232 Sebastian Velez



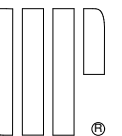


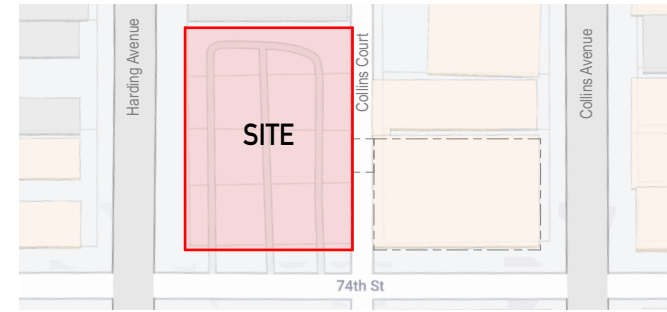
A-29

7401-7425 HARDING AVENUE

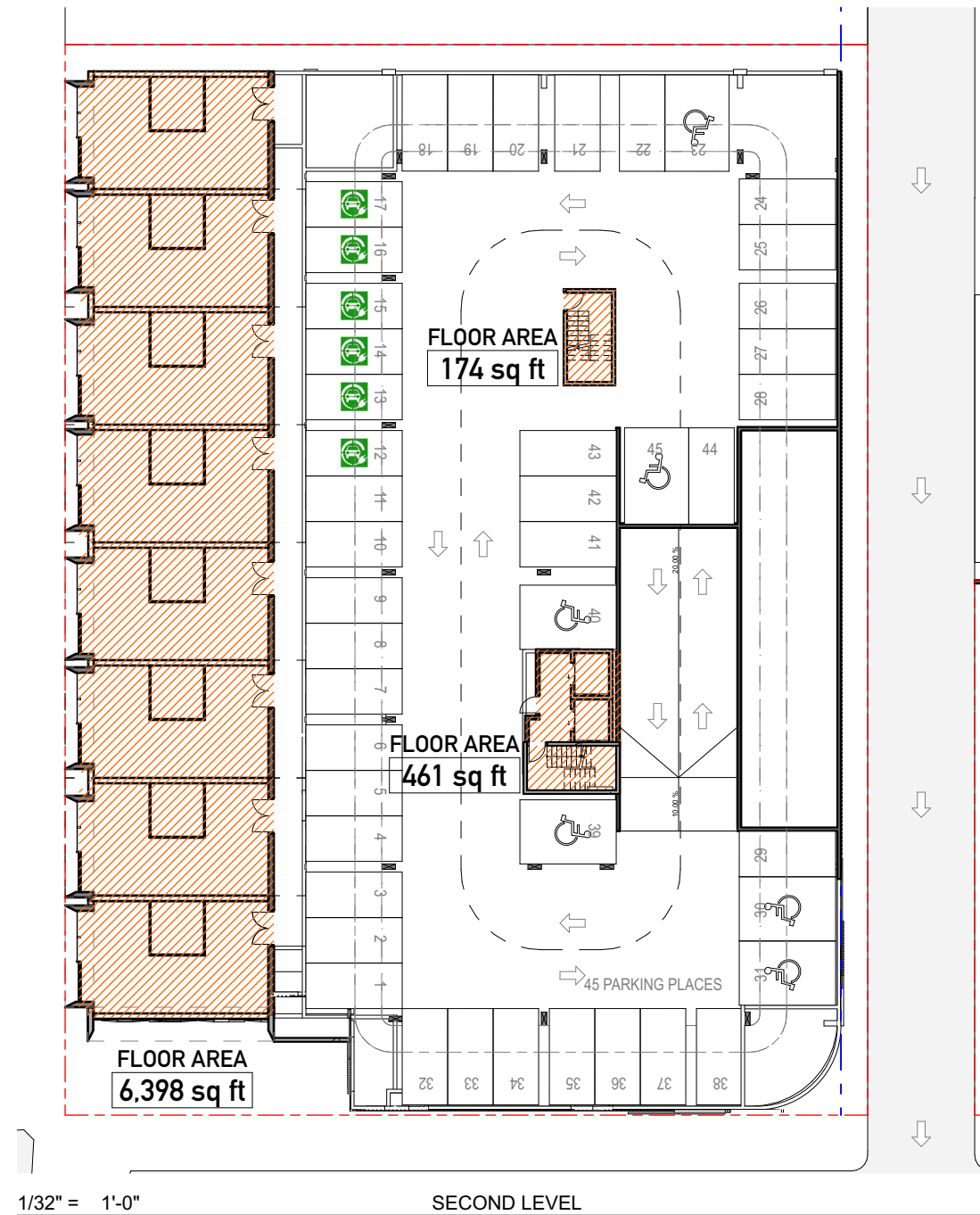
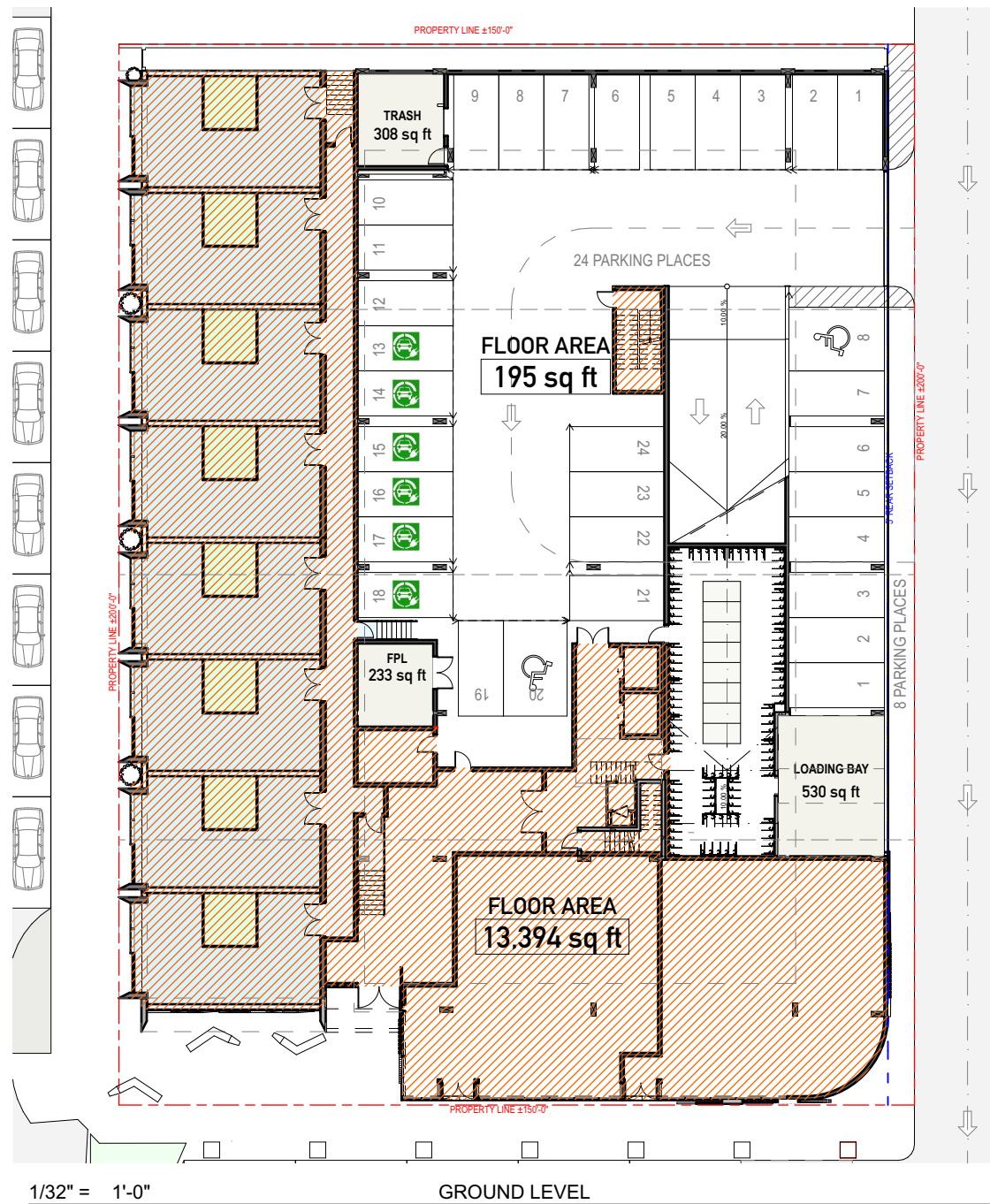
STREET SECTION 5/6/24

HARDING FINAL HPB SUBMITTAL  
URBAN ROBOT © 2024  
AR#99232 Sebastian Velez





KEYPLAN

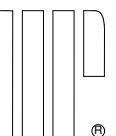


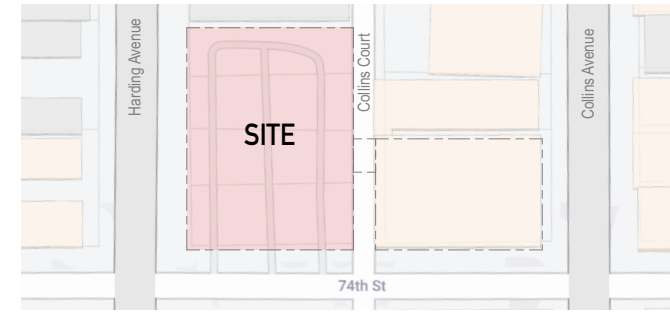
7410 COLLINS AVE  
COLLINS FAR SCHEDULE

LOCATION	AREA
GROUND LEVEL	11,810.58
SECOND LEVEL	865.02
THIRD LEVEL	5,487.37
FOURTH LEVEL	5,487.37
FIFTH LEVEL	5,487.37
AMENITIES DECK	863.33
30,000 SF	

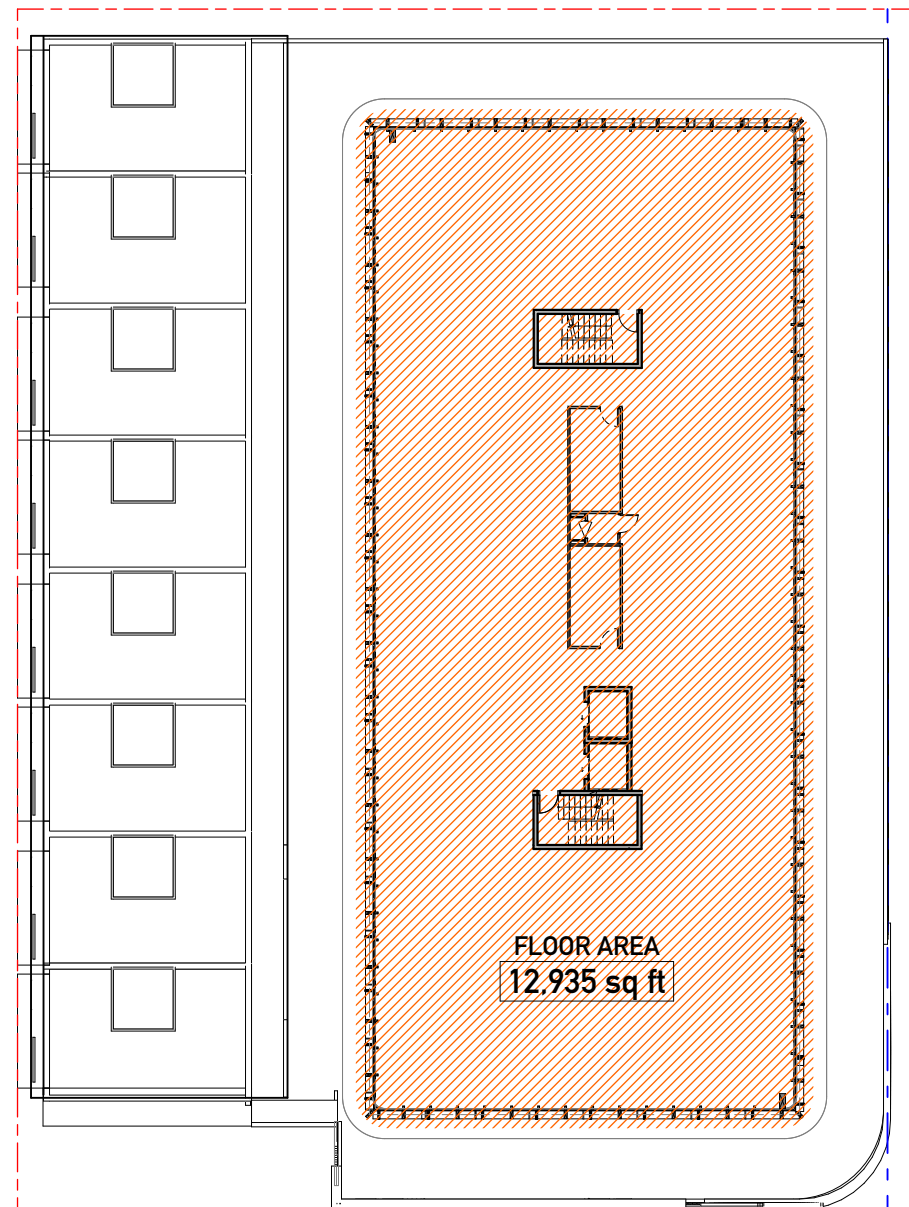
740-7425 HARDING AVE  
HARDING FAR SCHEDULE

LOCATION	AREA
GROUND LEVEL	13,589.52
SECOND LEVEL	7,032.82
THIRD LEVEL	12,934.80
FOURTH LEVEL	12,934.80
FIFTH LEVEL	12,934.89
AMENITIES DECK	573.61
60,000 SF	
<b>TOTAL FAR</b>	<b>90,000.00 sq ft</b>





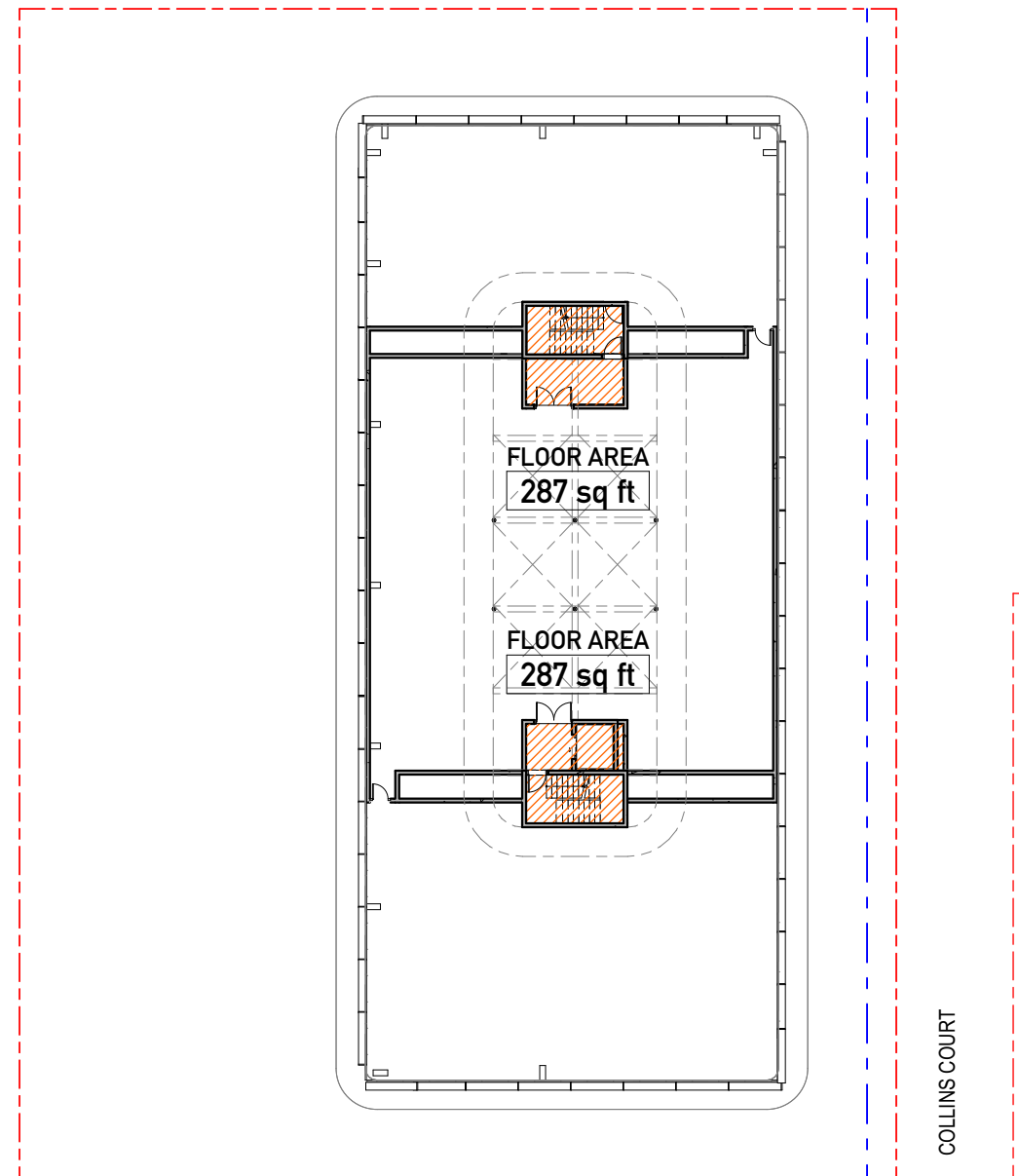
KEYPLAN



1/32" = 1'-0"

THIRD LEVEL-FIFTH LEVEL

1



1/32" = 1'-0"

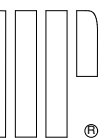
AMENITIES DECK

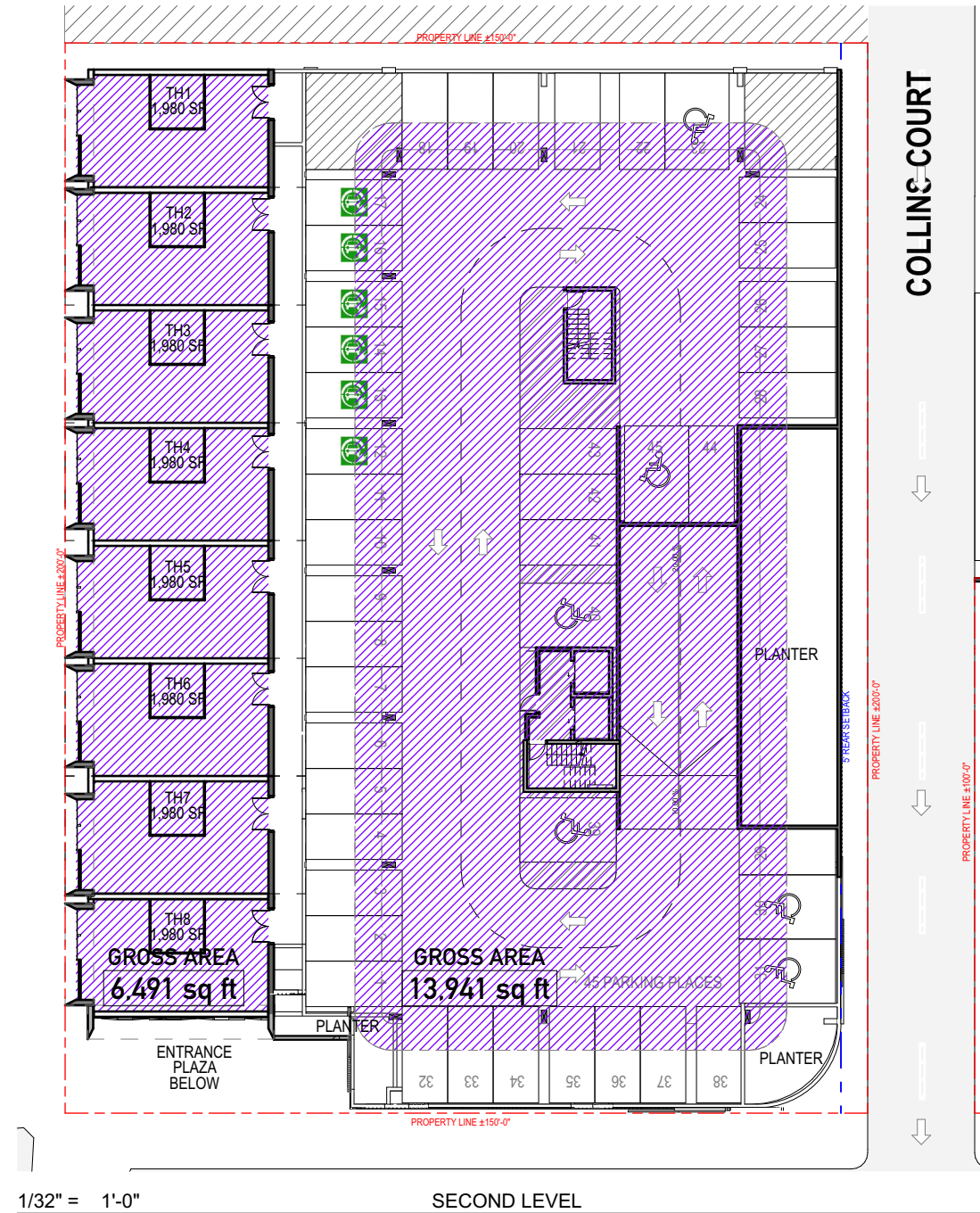
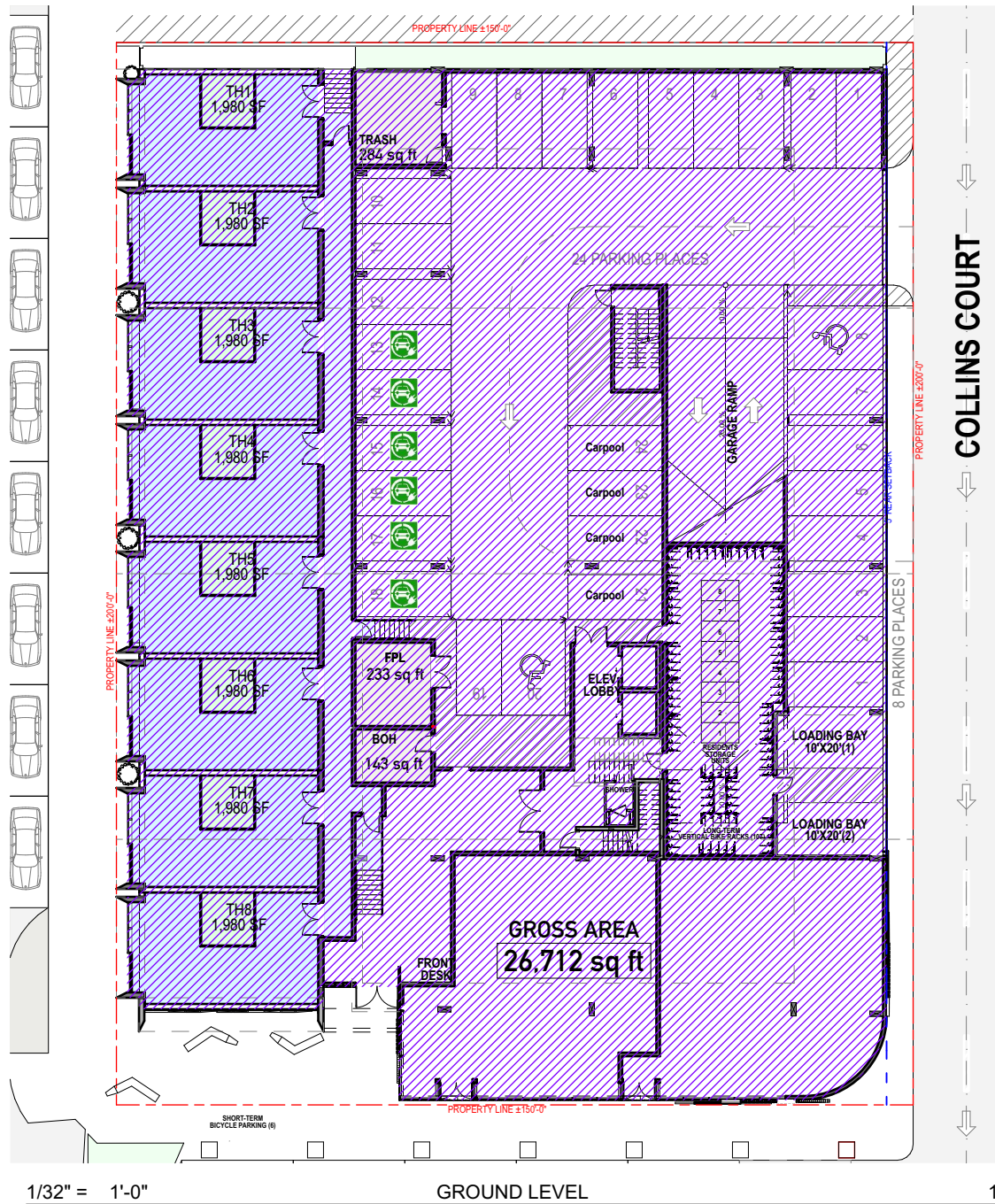
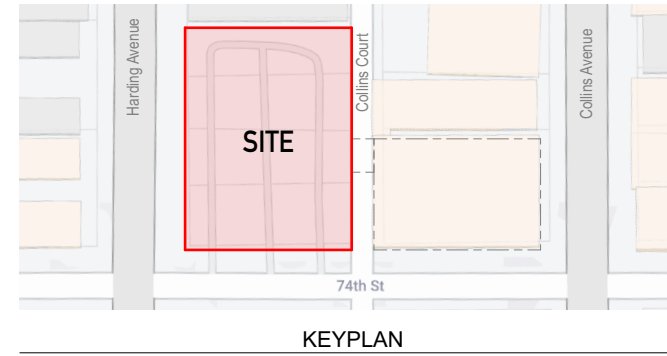
2

7410 COLLINS AVE	
COLLINS FAR SCHEDULE	
LOCATION	AREA
GROUND LEVEL	11,810.58
SECOND LEVEL	865.02
THIRD LEVEL	5,487.37
FOURTH LEVEL	5,487.37
FIFTH LEVEL	5,487.37
AMENITIES DECK	863.33
	30,000 SF

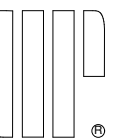
740-7425 HARDING AVE	
HARDING FAR SCHEDULE	
LOCATION	AREA
GROUND LEVEL	13,589.52
SECOND LEVEL	7,032.82
THIRD LEVEL	12,934.80
FOURTH LEVEL	12,934.80
FIFTH LEVEL	12,934.89
AMENITIES DECK	573.61
	60,000 SF
<b>TOTAL FAR</b>	<b>90,000.00 sq ft</b>

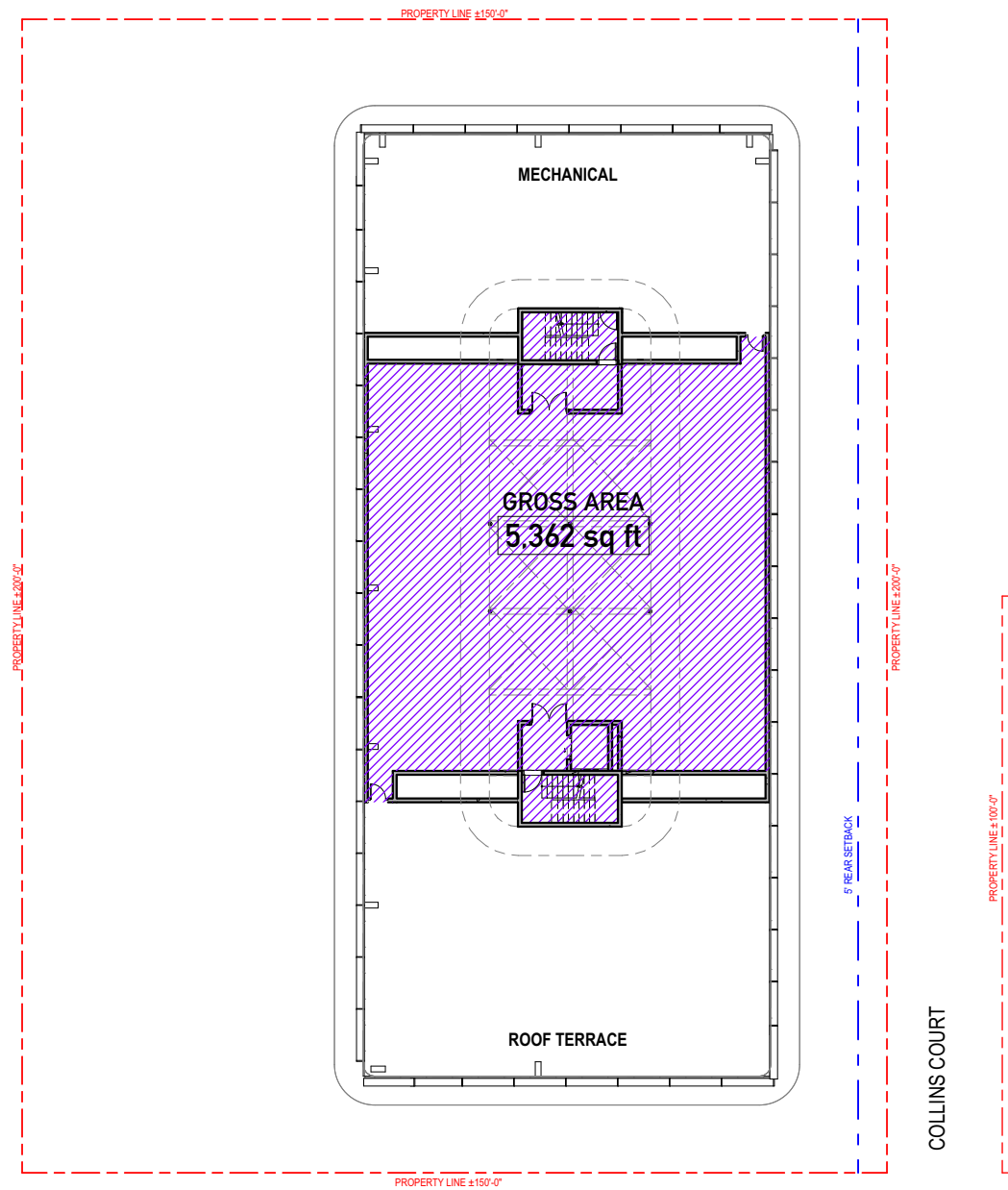
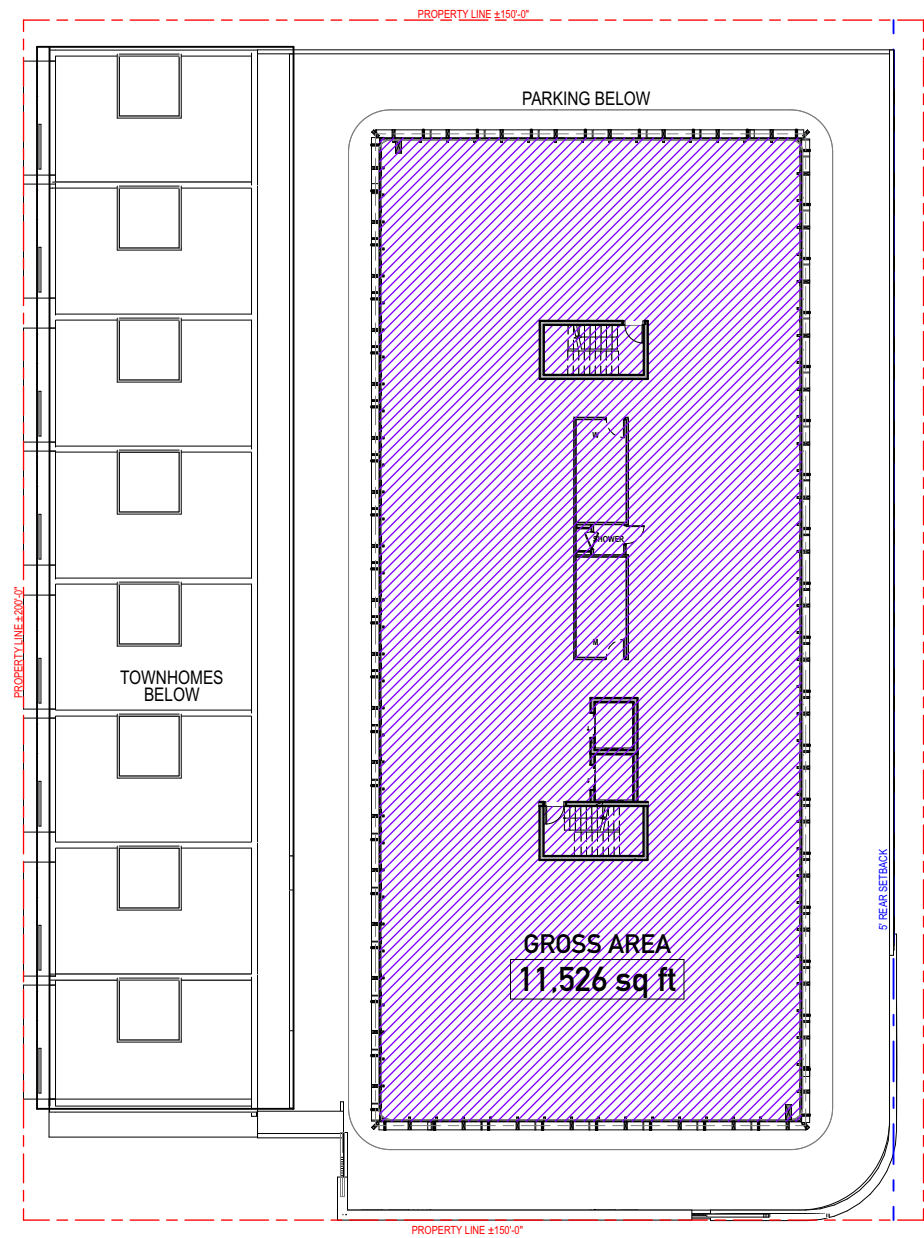
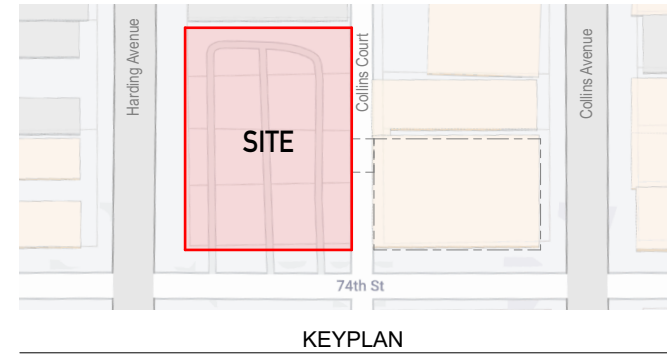
A-31





Gross Areas - Harding	
LOCATION	AREA
GROUND LEVEL	26,712.36
SECOND LEVEL	20,431.95
THIRD LEVEL	11,526.35
FOURTH LEVEL	11,526.35
FIFTH LEVEL	11,526.35
AMENITIES DECK	5,362.47
	87,085.83 ft <sup>2</sup>





Gross Areas - Harding	
LOCATION	AREA
GROUND LEVEL	26,712.36
SECOND LEVEL	20,431.95
THIRD LEVEL	11,526.35
FOURTH LEVEL	11,526.35
FIFTH LEVEL	11,526.35
AMENITIES DECK	5,362.47
	<b>87,085.83 ft<sup>2</sup></b>

1/32" = 1'-0"

THIRD LEVEL-FIFTH LEVEL

1

1/32" = 1'-0"

AMENITIES DECK

2

A-33

GROSS DIAGRAMS 5/6/24

7410 COLLINS AVENUE

HARDING FINAL HPB SUBMITTAL  
URBAN ROBOT © 2024  
AR#99232 Sebastian Velez





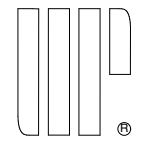
Pedestrian view from the Collins Ave/ 74th Street intersection

A-34

7401-7425 HARDING AVENUE

3 D VIEWS 5/6/24

HARDING FINAL HPB SUBMITTAL  
URBAN ROBOT © 2024  
AR#99232 Sebastian Velez





Aerial view

A-35

7401-7425 HARDING AVENUE

HARDING FINAL HPB SUBMITTAL  
URBAN ROBOT © 2024  
AR#99232 Sebastian Velez





Pedestrian view from the Harding Ave/ 74th Street intersection

A-36

3 D VIEWS 5/6/24

7401-7425 HARDING AVENUE

HARDING FINAL HPB SUBMITTAL  
URBAN ROBOT © 2024  
AR#99232 Sebastian Velez





Pedestrian view along the 74th street

A-37

7401-7425 HARDING AVENUE

3 D VIEWS 5/6/24

HARDING FINAL HPB SUBMITTAL  
URBAN ROBOT © 2024  
AR#99232 Sebastian Velez





Pedestrian view along Harding Ave looking North

A-38

3 D VIEWS | 5/6/24

7401-7425 HARDING AVENUE

HARDING FINAL HPB SUBMITTAL  
URBAN ROBOT © 2024  
AR#99232 Sebastian Velez

