



Crown Castle
3470 NW 82nd Avenue
10th Floor
Doral, FL 33122

October 7, 2025

Mr. Rogelio A. Madan
Miami Beach Planning Department
Miami Beach City Hall
1700 Convention Center Dr.
Miami Beach, FL 33139

Re: Crown Castle Poles Color Palette

Dear Mr. Madan:

The attached array of colors attached are the different colors our poles can be painted.

The poles are totally painted with a powder coated paint that is resistant to all weather conditions.

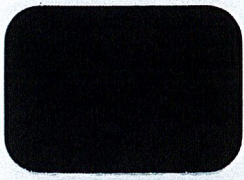
All poles that are installed will be painted to match the nearest and all poles of the area of the installation, normally these will be painted "Galvanized Gray" or "Black", on certain occasions when there are different pole colors on the area, we will match the appropriate color.

All equipment installed on the stealth poles, i.e. - antennas, radio equipment, power meters, and other related materials will be integrated inside the pole for concealment.

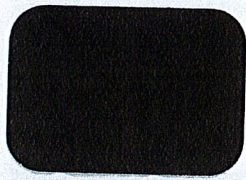
Feel free to contact me with any additional information.

Gilberto E Gonzalez

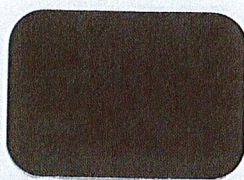
Network Permitting Specialist
Crown Castle Fiber LLC



C241-GR484
Dark Gray Fine Texture Semi-Gloss



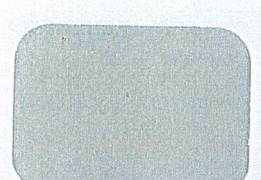
C241-GR07
Gray Fine Texture Semi-Gloss



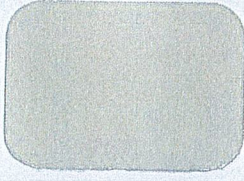
C241-GR305
Bay Gray Fine Texture Semi-Gloss



T243-GR522
Flint Gray Fine Texture Semi-Gloss



T241-GR11
Platinum Gray Fine Texture Semi-Gloss



T031-WH06
Pearl White Fine Texture Semi-Gloss



T243-GR301
Quartz Gray Fine Texture Semi-Gloss



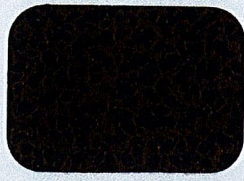
T241-GR142
Light Gray Fine Texture Semi-Gloss



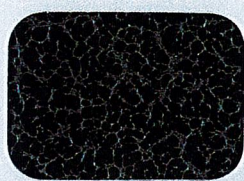
T241-BG137
Beige Fine Texture Semi-Gloss



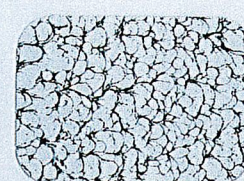
T375-BK07
Copper Vein Semi-Gloss*



T375-BK10
Gold Vein Semi-Gloss*



T375-BK26
Silver Vein Semi-Gloss*



T075-WH34
Black/White Vein Semi-Gloss



T064-BR24
Bronze Hammertone Semi-Gloss



T064-GR660
Gray Hammertone Semi-Gloss



T064-GR05
Silver Hammertone Semi-Gloss



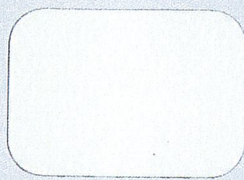
T064-BL95
Blue Hammertone Semi-Gloss



T064-GN81
Green Hammertone Semi-Gloss



C013-GR08
Gray Hammer Semi-Gloss



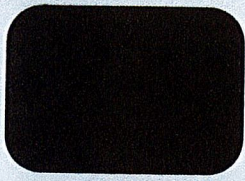
T013-BG38
Beige Hammer Semi-Gloss



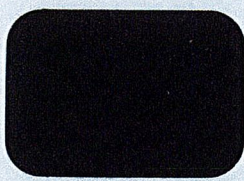
T012-WH260
White Hammer Semi-Gloss



T013-WH09
White Hammer Semi-Gloss



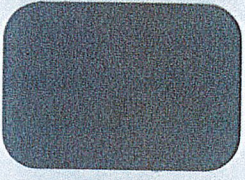
T025-BR01
Bronze Pearlescent 50% Gloss



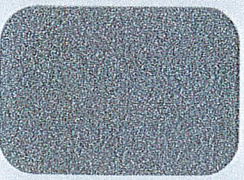
T028-GR02
Steel Gray Pearlescent 80% Gloss



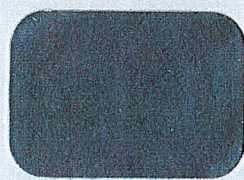
T353-YL02
Brass 30% Gloss*



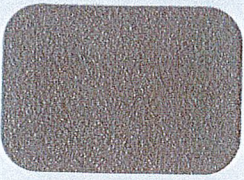
T357-GR105
Silver Metallic 70% Gloss*



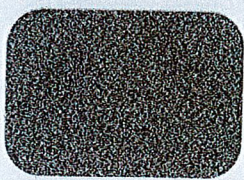
T353-GR06
Silver Metallic 30% Gloss*



T358-GR539
Chrome 80% Gloss*



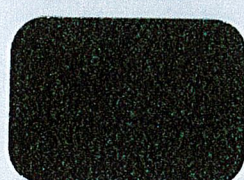
T391-BG290
Metallic Bronze Semi-Gloss Texture*



T091-GR309
Mock Rock Texture Semi-Gloss



C291-GN20
Patina Texture Semi-Gloss



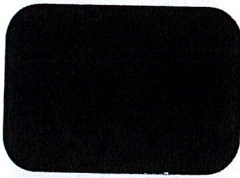
T091-GN57
Verdigris Texture Semi-Gloss



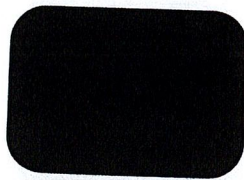
T091-BR47
Rust Texture Semi-Gloss

Computer Colors

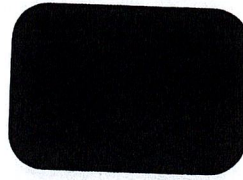
Specialty Coatings



C241-BK303
Black Fine Texture Low-Gloss



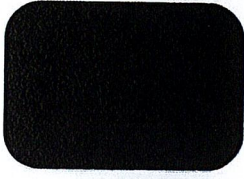
C081-BK176
Black Wrinkle Semi-Gloss



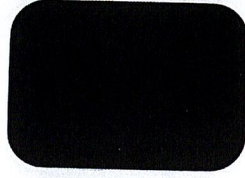
E311-BK04
Black Hammer Low-Gloss**



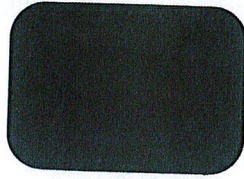
T013-BK62
Black Hammer Semi-Gloss



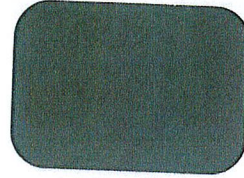
T032-BR62
Brown Fine Texture Semi-Gloss



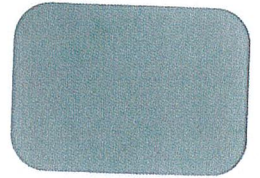
P004-BR23
Bronze 40% Gloss



P004-GR09
ANSI #49 Gray 40% Gloss



P004-GR16
ANSI #61 Gray 40% Gloss



H305-GR10
Light Gunmetal Gray 50% Gloss**



P003-GR01
Gray #26307 30% Gloss



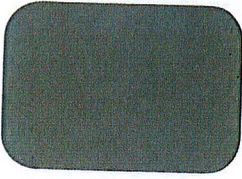
H303-WH16
Antique White 30% Gloss**



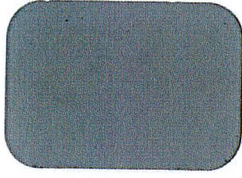
P005-WH01
White #27875 50% Gloss



T002-WH08
White 20% Gloss



T008-GR736
Gray ANSI 61 80% Gloss



P008-GR21
RAL 7042 Gray 80% Gloss



T009-GR230
RAL 7035 Gray 90% Gloss



T009-WH13
White 90% Gloss



P009-WH14
White 90% Gloss



H309-WH27
Frost White 90% Gloss**



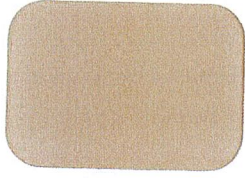
T032-BG03
Beige Texture Semi-Gloss



T032-WH15
White Texture Semi-Gloss



C031-WH120
White Texture Semi-Gloss



T009-BG16
Designer Beige 90% Gloss



P009-BG02
Beige 90% Gloss



T009-BG01
Almond 90% Gloss



H308-WH25
White 80% Gloss**



P009-WH04
White 90% Gloss



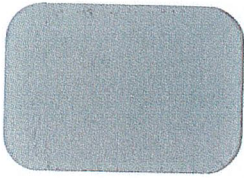
T009-WH11
White 90% Gloss



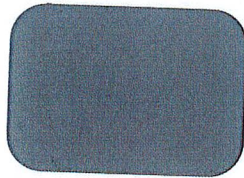
T009-WH12
Hi-Reflective White 90% Gloss



T007-WH121
White 70% Gloss



E305-GR533
Gray Primer 50% Gloss**



H304-GR312
Anti-Gassing Primer 40% Gloss**



E396-GR1372
Zinc Rich Primer

If a clear topcoat finish is preferred
T209-CL01 90% Gloss Clear TGIC Polyester
T002-CL02 20% Gloss Clear TGIC Polyester

The samples on this card are representative only and vary slightly from actual gloss, color and texture.