

Location:
FOGO DE CHAO
1212 LINCOLN ROAD
SUITES 10-12
MIAMI BEACH, FL 33139

- Revision:
- 5)PM-02.26.25:Shift B down over louvers, remove C
 - 6)PM-05.05.25:Add B option 2, add A section detail
 - 7)PM-06.02.25:Remove option Sign B Option 1
 - 8)PM-06.26.25:Update blade locations/update qty 2
 - 9)PM-07.02.25:Update blade locations
 - 10)PM-07.11.25:Update w/ bldg callouts, make rcwy 2x5 fabricated
 - 11)PM-07.31.25:Rev elev. names, update renderings
 - 12)PM-008.04.25:Rev elev. to proposed/allowed
 - 13)MG-08.12.25:Rev sq ft chart (pg 2) per JK

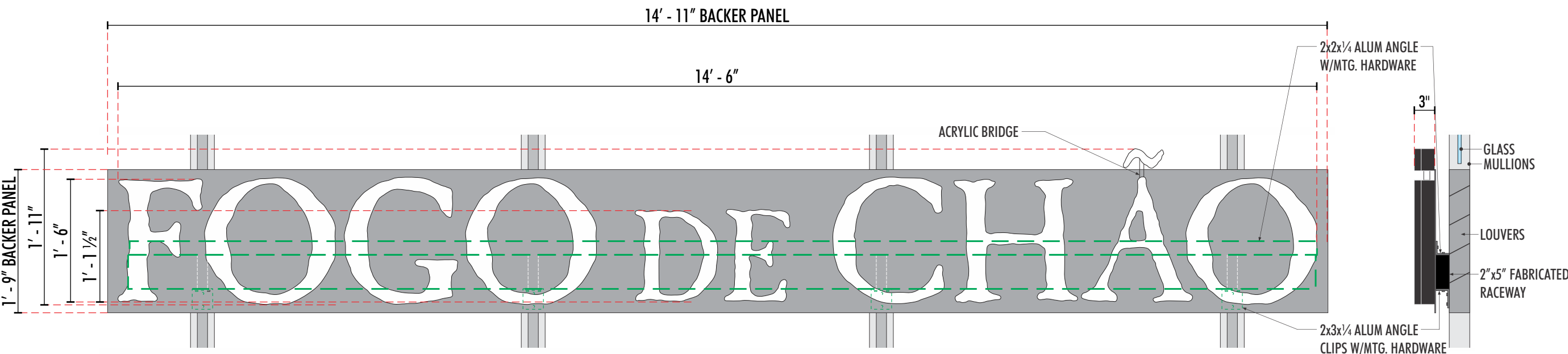
- Approved
- Approved as Noted
- Revise & Resubmit

Drawing No: 24-3250-R13

Date: 09.19.2023 PM

Page No:

This is an original unpublished drawing created by First & Main Signs. It is submitted for your personal use in conjunction with a project being planned for you by First & Main Signs. It is not to be shown to anyone outside your organization, nor is it to be used, reproduced, copied or exhibited in any fashion without written permission from First & Main Signs.



END VIEW

B INTERNALLY ILLUMINATED FACE-LIT CHANNEL LETTERS on BACKER PANEL

SCALE: 3/4" = 1' - 0"

Area: 27.49 Sq Ft

ONE (1) REQUIRED - MANUFACTURE AND INSTALL

SPECIFICATIONS

- Fabricated 3" deep internally illuminated channel letters.
- Black returns and black trimcap
- Letters to be mounted flush to aluminum backer panel
- .125 back panel mounts to 3" x 5" extruded raceway w/ 2x2 aluminum angle, panel painted to match louvers (Color TBV). Panel to match height of louvers.

COLORS & ILLUMINATION

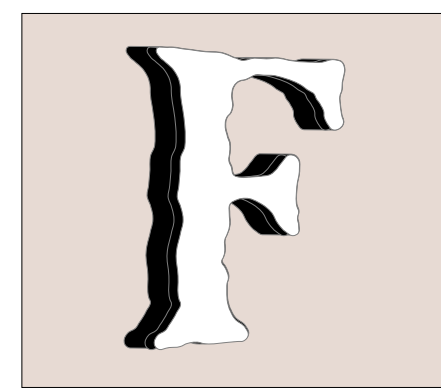
- White (7328) acrylic
- Illumination to be white (6500k) LED's

RACEWAY

- 2" x 5", fabricated aluminum raceway painted to match louvers behind, (Color TBV)
- Raceway mounts to mullions with non-corrosive mounting hardware and angle brackets (typ). Mullions to be field surveyed
- All penetrations into canopy to be waterproof
- Raceway to contain 12v LED power supplies. Power supplies to be at ends of raceway for access.
- Primary power to raceway to be provided by G.C. PRIOR to installation with 8'-0" whips
- Raceway to have removable lifting points

NOTE: DETAILED SURVEY/SECTION DETAILS OF MULLIONS/STRUCURE REQUIRED PRIOR TO MANUFACTURE

NOTE: LOUVERS ARE BEHIND SIGNAGE AND GLASS IS ABOVE AND BELOW LOUVERS/SIGNAGE



DAY VIEW



NIGHT VIEW

ELECTRICAL ILLUMINATION REQUIREMENTS

1 Dedicated 20 Amp Circuit at 120 Volts (FOR EACH SIGN)

NOTE: All primary electrical to sign location to be provided by others. A dedicated circuit with NO shared neutrals and a ground returning to the panel is required for installation.

This sign is intended to be installed in accordance with Article 600 or the National Electrical Code and/or other applicable local codes. This includes proper grounding and bonding of the sign.

All power supplies to be Ground-Fault Interrupted (GFI)

Signage to have a dedicated branch circuit, three (3) wires (Line, Neutral and Ground)

Wire sizes to be a minimum of 12 Ga. THHN copper wire. Gauge of wire is determined by the length of run and amperage as per NED Article 300

Voltage should read no more than 3 volts between ground and neutral

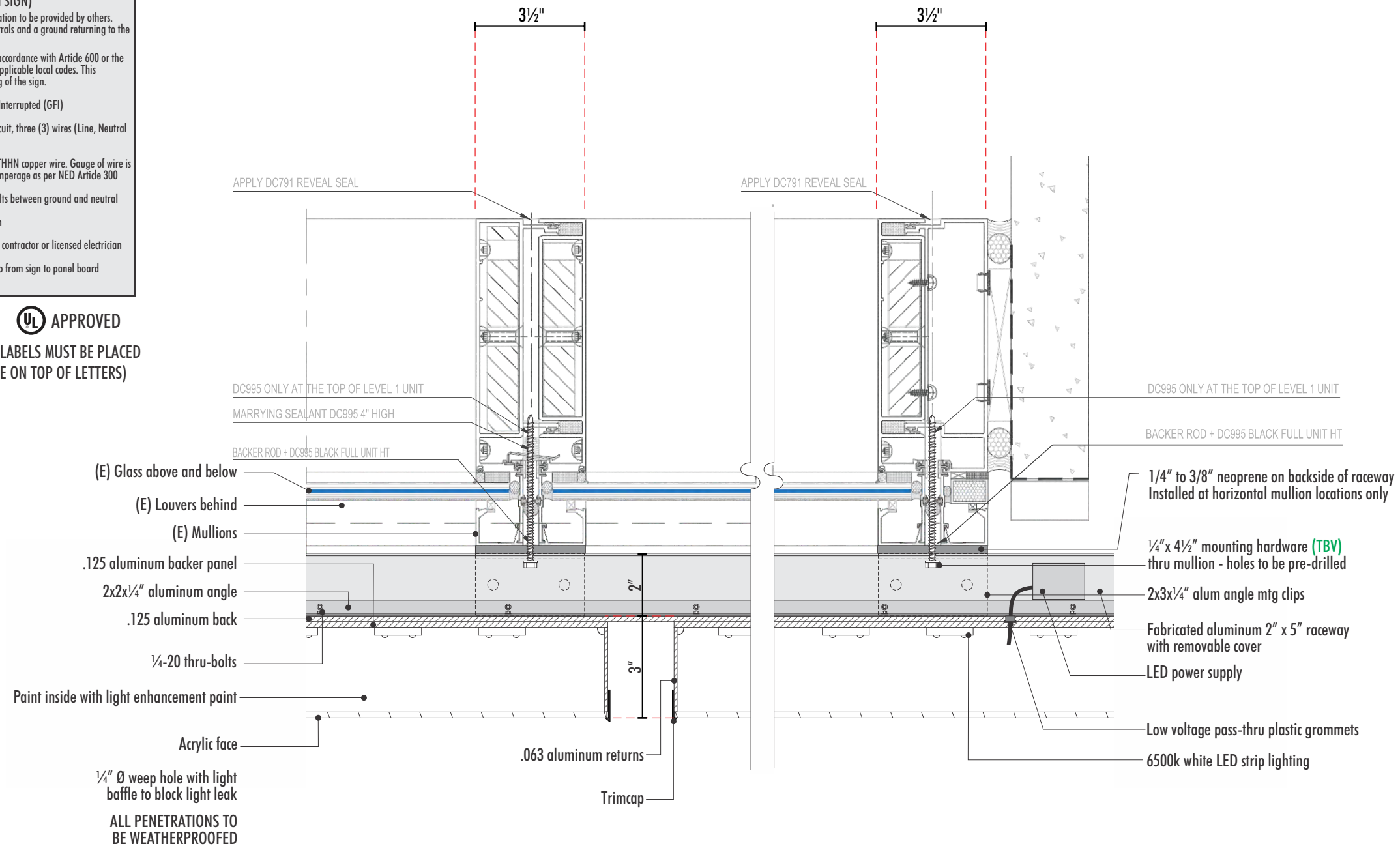
Conduit can not be used as ground path

Power to sign to be done by a electrical contractor or licensed electrician

Ground wire must be continuous and go from sign to panel board ground bus.

ALL COMPONENTS TO BE  APPROVED

ALL UL and MANUFACTURE LABELS MUST BE PLACED OUT OF PUBLIC VIEW (PLACE ON TOP OF LETTERS)



B 1 PLAN VIEW SECTION DETAIL
SCALE: 3" = 1'-0"

NOTE: DETAILED SURVEY/SECTION DETAILS OF MULLIONS/STRUCURE REQUIRED PRIOR TO MANUFACTURE

NOTE: LOCATION OF PRIMARY ELECTRICAL TO BE COORDINATED WITH G.C. PRIOR TO FABRICATION

NOTE: LOUVERS ARE BEHIND SIGNAGE AND GLASS IS ABOVE AND BELOW LOUVERS/SIGNAGE

Location:

FOGO DE CHAO
1212 LINCOLN ROAD
SUITES 10-12
MIAMI BEACH, FL 33139

Revision:

- 5)PM:02.26.25:Shift B down over louvers, remove C
- 6)PM:05.05.25:Add B option 2, add A section detail
- 7)PM:06.02.25:Remove option Sign B Option 1
- 8)PM:06.26.25:Update blade locations/update qty 2
- 9)PM:07.02.25:Update blade locations
- 10)PM:07.11.25:Update w/ bldg callouts, make rcwy 2x5 fabricated
- 11)PM:07.31.25:Rev elev. names, update renderings
- 12)PM:08.04.25:Rev elev. to proposed/allowed
- 13)MG:08.12.25:Rev sq ft chart (pg 2) per JK

- Approved
- Approved as Noted
- Revise & Resubmit

Drawing No: 24-3250-R13

Date: 09.19.2023 PM

Page No: 5.01

This is an original unpublished drawing created by First & Main Signs. It is submitted for your personal use in conjunction with a project being planned for you by First & Main Signs. It is not to be shown to anyone outside your organization, nor is it to be used, reproduced, copied or exhibited in any fashion without written permission from First & Main Signs.

Location:
FOGO DE CHAO
1212 LINCOLN ROAD
SUITES 10-12
MIAMI BEACH, FL 33139

- Revision:
- 5)PM-02.26.25:Shift B down over louvers, remove C
 - 6)PM-05.05.25:Add B option 2, add A section detail
 - 7)PM-06.02.25:Remove option Sign B Option 1
 - 8)PM-06.26.25:Update blade locations/update qty 2
 - 9)PM-07.02.25:Update blade locations
 - 10)PM-07.11.25:Update w/ bldg callouts, make rcwy 2x5 fabricated
 - 11)PM-07.31.25:Rev elev. names, update renderings
 - 12)PM-008.04.25:Rev elev. to proposed/allowed
 - 13)MG-08.12.25:Rev sq ft chart (pg 2) per JK

- Approved
- Approved as Noted
- Revise & Resubmit

Drawing No: 24-3250-R13

Date: 09.19.2023 PM

Page No: 5.02

This is an original unpublished drawing created by First & Main Signs. It is submitted for your personal use in conjunction with a project being planned for you by First & Main Signs. It is not to be shown to anyone outside your organization, nor is it to be used, reproduced, copied or exhibited in any fashion without written permission from First & Main Signs.

ELECTRICAL ILLUMINATION REQUIREMENTS

1 Dedicated 20 Amp Circuit at 120 Volts (FOR EACH SIGN)

NOTE: All primary electrical to sign location to be provided by others. A dedicated circuit with NO shared neutrals and a ground returning to the panel is required for installation.

This sign is intended to be installed in accordance with Article 600 or the National Electrical Code and/or other applicable local codes. This includes proper grounding and bonding of the sign.

All power supplies to be Ground-Fault Interrupted (GFI)

Signage to have a dedicated branch circuit, three (3) wires (Line, Neutral and Ground)

Wire sizes to be a minimum of 12 Ga. THHN copper wire. Gauge of wire is determined by the length of run and amperage as per NED Article 300

Voltage should read no more than 3 volts between ground and neutral

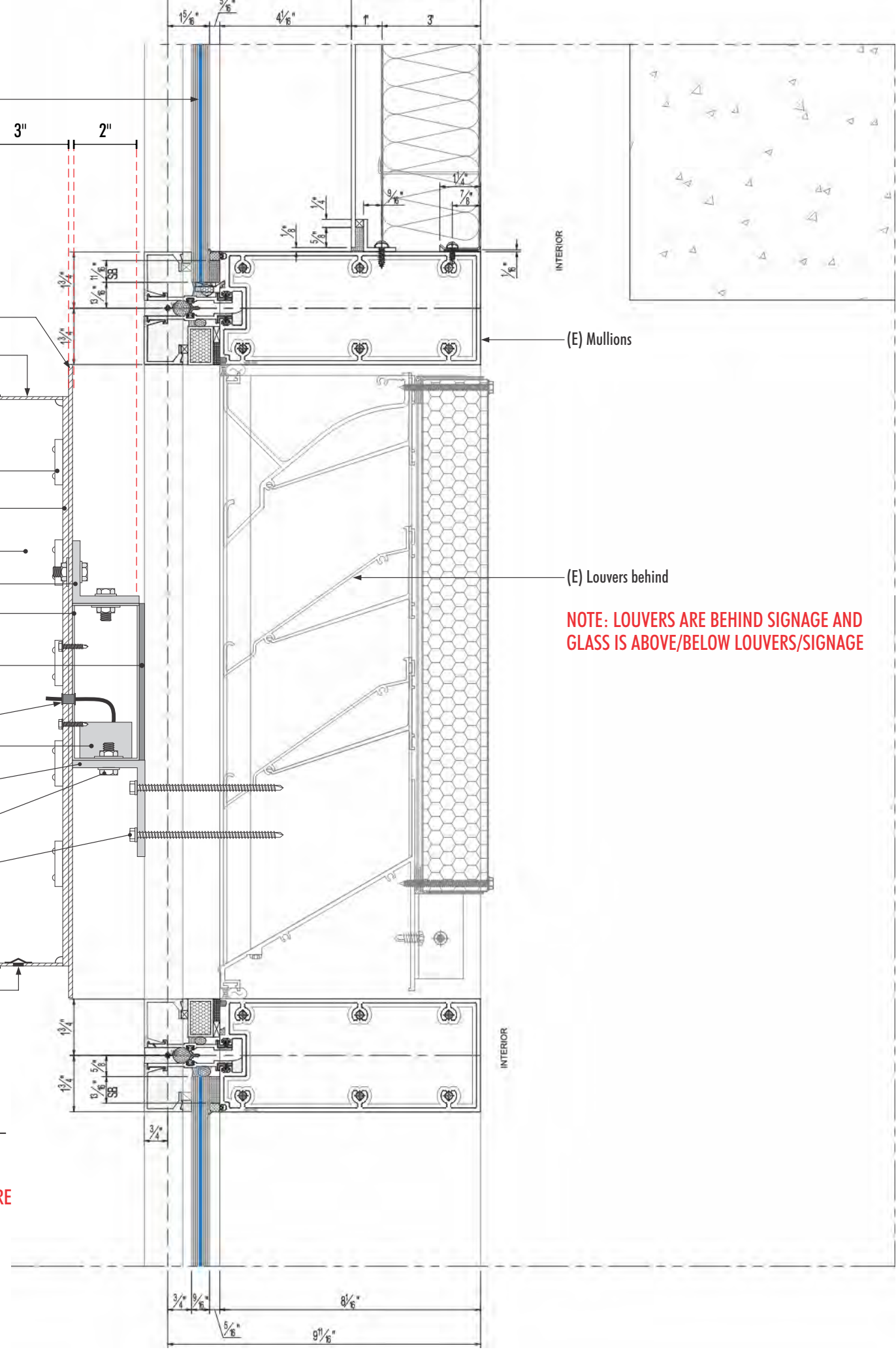
Conduit can not be used as ground path

Power to sign to be done by a electrical contractor or licensed electrician

Ground wire must be continuous and go from sign to panel board ground bus.

ALL COMPONENTS TO BE **UL** APPROVED

ALL UL and MANUFACTURE LABELS MUST BE PLACED OUT OF PUBLIC VIEW (PLACE ON TOP OF LETTERS)



- (E) Glass above and below
- .125 aluminum backer panel
- .063 aluminum returns
- Trimcap
- Acrylic face
- 6500k white LED strip lighting
- .125 aluminum back
- Paint inside with light enhancement paint
- 2x2x1/4" aluminum angle
- Fabricated aluminum 2" x 5" raceway w/ removable cover. Mounted to front of mullions
- 1/4" to 3/8" neoprene on backside of raceway Installed at horizontal mullion locations only
- Low voltage pass-thru plastic grommets
- LED power supply to be at ends for access
- 2x3x1/4" alum angle mtg clips
- 1/4-20 thru-bolts
- 1/4" x 4 1/2" mounting hardware (TBV) thru mullion - holes to be pre-drilled (See Plan View / Section Detail)
- 1/4" Ø weep hole with light baffle to block light leak
- ALL PENETRATIONS TO BE WEATHERPROOFED

NOTE: LOUVERS ARE BEHIND SIGNAGE AND GLASS IS ABOVE/BELOW LOUVERS/SIGNAGE

B 1 END VIEW SECTION DETAIL
SCALE: 3" = 1'-0"

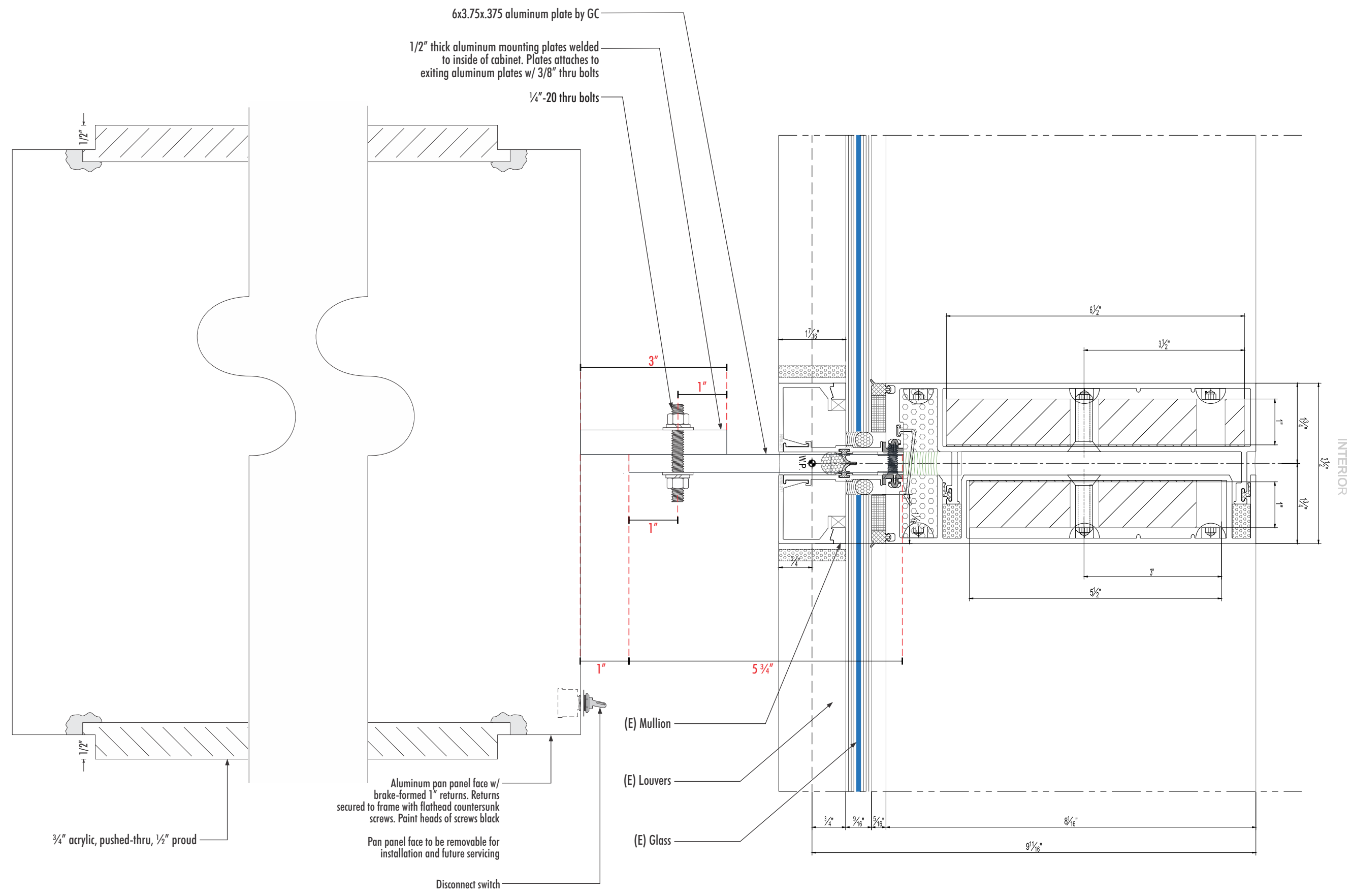
NOTE: DETAILED SURVEY/SECTION DETAILS OF MULLIONS/STRUCTURE REQUIRED PRIOR TO MANUFACTURE

NOTE: LOCATION OF PRIMARY ELECTRICAL TO BE COORDINATED WITH G.C. PRIOR TO FABRICATION

NOTE: EXISTING LOUVER SYSTEM NOT STRUCTURALLY SOUND TO MOUNT SIGN TO

Location:
FOGO DE CHAO
1212 LINCOLN ROAD
SUITES 10-12
MIAMI BEACH, FL 33139

- Revision:
- 5)PM-02.26.25:Shift B down over louvers, remove C
 - 6)PM-05.05.25:Add B option 2, add A section detail
 - 7)PM-06.02.25:Remove option Sign B Option 1
 - 8)PM-06.26.25:Update blade locations/update qty 2
 - 9)PM-07.02.25:Update blade locations
 - 10)PM-07.11.25:Update w/ bldg callouts, make rcwy 2x5 fabricated
 - 11)PM-07.31.25:Rev elev. names, update renderings
 - 12)PM-008.04.25:Rev elev. to proposed/allowed
 - 13)MG-08.12.25:Rev sq ft chart (pg 2) per JK



D1 D2 1 PLAN VIEW SECTION DETAIL
SCALE: HALF

NOTE: PROPOSED ATTACHMENT DESIGN TO BE REVIEWED AND APPROVED BY BUILDING EXTERIOR STOREFRONT CONTRACTOR

- Approved
- Approved as Noted
- Revise & Resubmit

Drawing No: 24-3250-R13

Date: 09.19.2023 PM

Page No: 6.01

This is an original unpublished drawing created by First & Main Signs. It is submitted for your personal use in conjunction with a project being planned for you by First & Main Signs. It is not to be shown to anyone outside your organization, nor is it to be used, reproduced, copied or exhibited in any fashion without written permission from First & Main Signs.