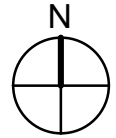
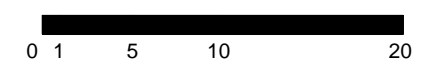


Qty	Key	Botanical / Common Name	Specification	Native Y/N	Mitigation
2	CD	Coccoloba diversifolia / Pigeon Plum	Street trees 14' oa ht, 7' spr, 3" cal, 4'CT.	Yes	
1	CES	Conocarpus e. sericeus / Silver Buttonwood	Street tree 14' oa ht, 7' spr, 3" cal, 4'CT.	Yes	
1	CES	Conocarpus e. sericeus / Silver Buttonwood	Req'd tree 14' oa ht, 7' spr, 3" cal, 4'CT.	Yes	1 tree
4	EF	Eugenia foetida / Spanish Stopper	Req'd tree 12' oa ht, 6' spr, 2" cal.	Yes	4 trees
3 Street trees, 5 Req'd trees					

Req'd Shrubs:					
25	MYF	Myrcianthes fragrans / Simpson Stopper	3-4' ht, 1.5' spr, 7 gal.	Yes	
18	EUR	Eugenia rhombea / Red Stopper	2' ht, 1.5' spr, 7 gal.	Yes	
20	PSN	Psychotria nervosa / Wild Coffee	1.5' ht, 1.5' spr, 7 gal.	Yes	
63 Prov'd Shrubs, 63 Native					
Additional plant material: Accents & Groundcovers:					
9	RHE	Rhapis excelsa / Lady Palm	5' oa ht, 3' spr, matched.	No	
15	ZAP	Zamia pumila / Coontie	2' ht, 2' spr, 7 gal.	Yes	
52	FIM	Ficus microcarpa / Green Island Ficus	1.5' ht, 1.5' spr, 7 gal.	No	



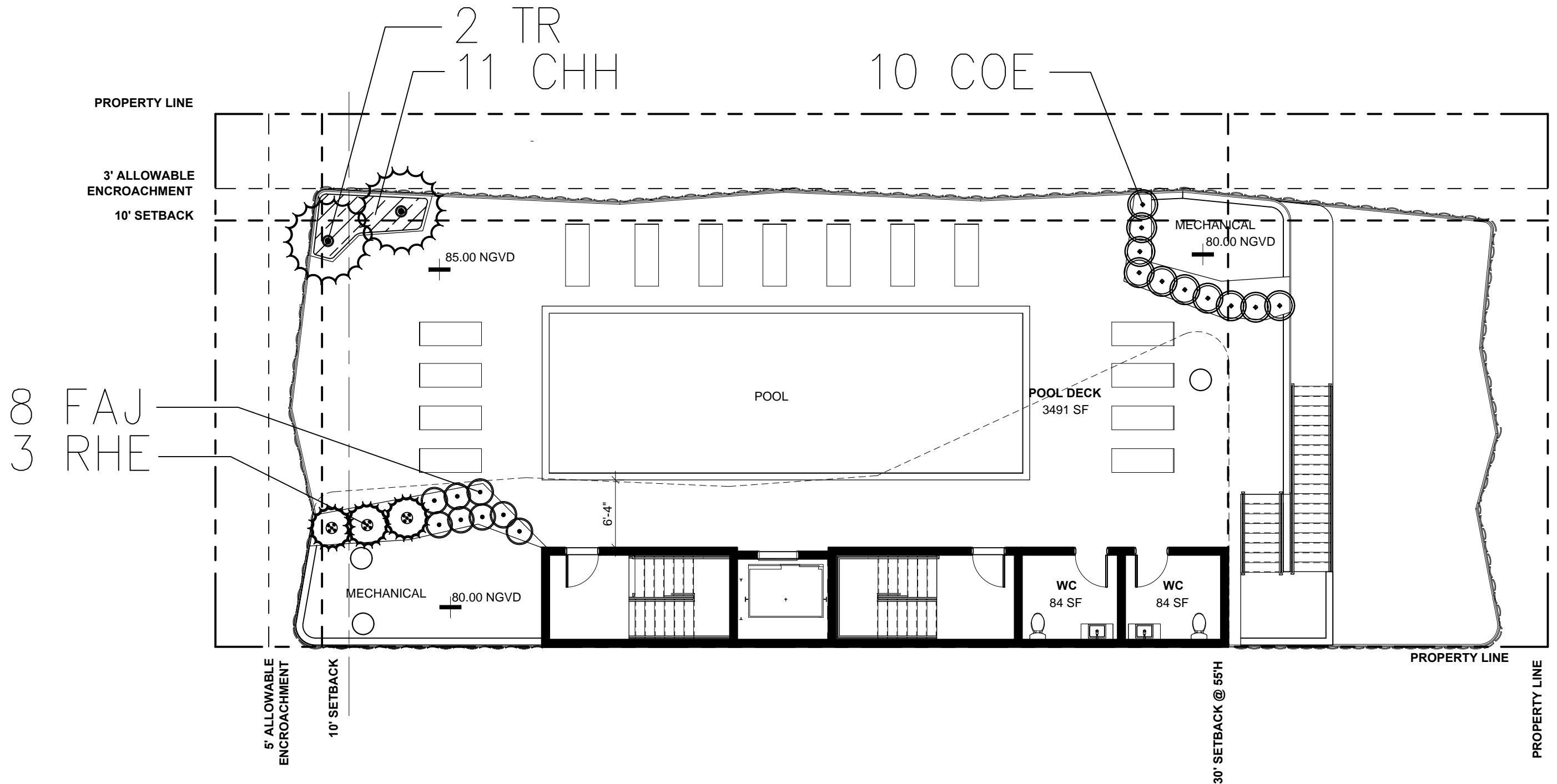
Herbert L Martin
Digitally signed by Herbert L Martin
Date: 2025.06.23 16:31:01 -04'00'

- L 10 Landscape Plan
- L 10.1 Roof Level Landscape Plan
- L 11 Notes, Details, Plant List, Legend
- L 12 Tree Survey / Disposition Plan
- L 13 Landscape Lighting Plan

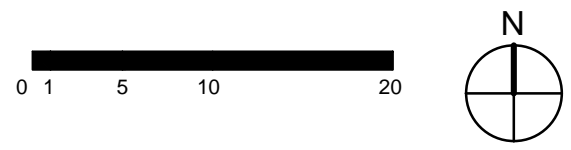


ARCHITECT	CONSULTANT	OWNER	PROJECT	DRAWING TITLE	DRAWING #
M77R 7290 NW 1ST COURT MIAMI FL 33150 www.ma77er.com	HL MARTIN, LANDSCAPE ARCHITECT, PA LA #0001722 5965 SW 38 ST MIAMI FL 33155 305.790.4372	ABBOTT M 6945 LLC 6945 ABBOTT AVE MIAMI BEACH FL 33141	6945 ABBOTT AVE	Landscape Plan 2025.05.12 1" = 10'-0"	2407

L 10



Roof Level Landscape Plan					
2	TR	Thrinax radiata / Thatch Palm	6', 8' oa hts,	Yes	
3	RHE	Rhapis excelsa / Lady Palm	5' oa ht, 3' spr, matched.	No	
10	COE	Conocarpus erectus / Green Buttonwood	3-4' ht, 1.5' spr, 7 gal.	Yes	
11	CHH	Chrysobalanus horizontalis / Horizontal Cocoplum	1.5' ht, 1.5' spr, 3 gal.	Yes	
8	FAJ	Farugium japonicum / Leopard Plant	1.5' ht, 1.5' spr, 3 gal.	No	
21 Prov'd Shrubs, 21 Native (COE+CHH)					

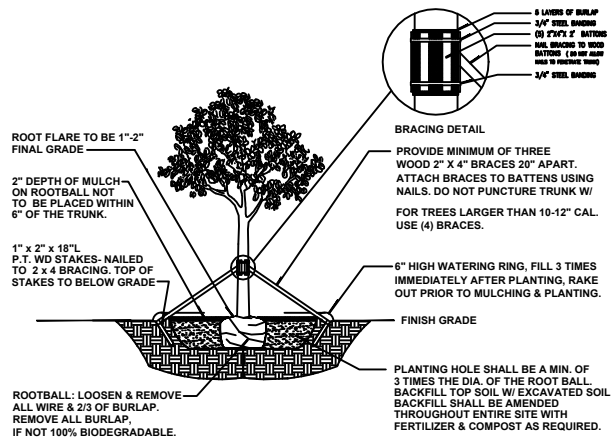


Herbert L Martin
Digitally signed by Herbert L Martin
Date: 2025.06.23 16:31:22 -04'00'

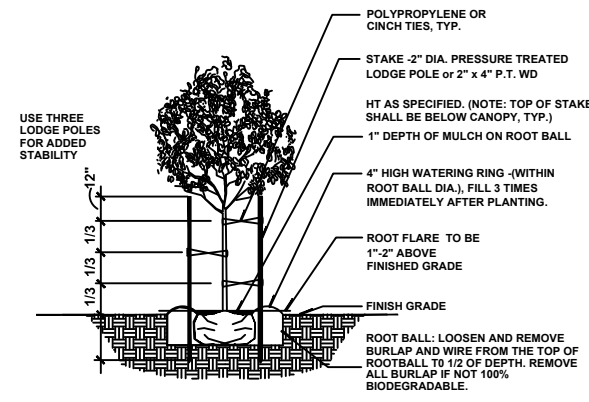
L 10 Landscape Plan
L 10.1 Roof Level Landscape Plan
L 11 Notes, Details, Plant List, Legend
L 12 Tree Survey / Disposition Plan
L 13 Landscape Lighting Plan



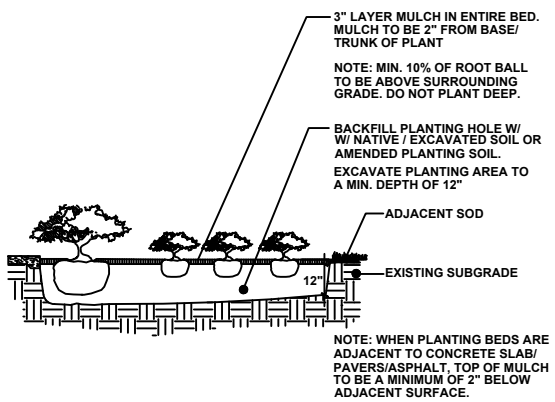
ARCHITECT	CONSULTANT	OWNER	PROJECT	DRAWING TITLE	DRAWING #
M77R 7290 NW 1ST COURT MIAMI FL 33150 www.ma77er.com	HL MARTIN, LANDSCAPE ARCHITECT, PA LA #0001722 5965 SW 38 ST MIAMI FL 33155 305.790.4372	ABBOTT M 6945 LLC 6945 ABBOTT AVE MIAMI BEACH FL 33141	6945 ABBOTT AVE	Roof Level Landscape Plan 2025.05.12 1" = 10'-0"	L 10.1 2407



Tree Planting & Bracing Detail
Caliper of 2.5" or Greater
N.T.S.



NOTE:
1. DO NOT APPLY MULCH WITHIN 6" OF THE TREE TRUNK
Tree Planting & Bracing Detail With
A Caliper up to 2.5"
N.T.S.



Shrub/Groundcover Detail
N.T.S.

LANDSCAPE ARCHITECT'S PLANT / PLANTING NOTES

- ALL PLANT MATERIAL TO BE FLORIDA GRADE NO. 1 (FG #1) OR BETTER FLORIDA DEPARTMENT OF AGRICULTURE GRADES AND STANDARDS; PARTS I AND II, 5th EDITION: 2022, RESPECTIVELY.
- TWO MEETINGS, PRE-INSTALLATION & SUBSTANTIAL COMPLETION, SHALL BE REQ'D DURING INSTALLATION/CONSTRUCTION PROCESS. PRE-INSTALLATION MEETING SHALL BE SCHEDULED W/ LANDSCAPE ARCHITECT, TWO WEEKS PRIOR TO INSTALLATION.
- A MUNICIPALLY APPROVED LANDSCAPE PLAN IS A LEGAL & BINDING DOCUMENT. NO CHANGES SHALL BE MADE WITHOUT PRIOR NOTIFICATION & SUBSEQUENT WRITTEN APPROVAL OF THE LANDSCAPE ARCHITECT & GOVERNING MUNICIPALITY. (IF REQ'D)
- LANDSCAPE PLAN SHALL BE INSTALLED IN COMPLIANCE WITH ALL LOCAL/PERTINENT CODES.
- LANDSCAPE CONTRACTOR SHALL REVIEW ALL DRAWINGS AND PREPARE ONE'S OWN QUANTITY COUNTS (PRIOR TO BID COST AND COMPARE TO ARCHITECT'S PLANT LIST). LANDSCAPE CONTRACTOR IS RESPONSIBLE FOR ATTAINING ACCURATE COUNT OF PLANT MATERIALS SPECIFIED. IN THE EVENT OF DISCREPANCIES, LANDSCAPE CONTRACTOR SHALL BRING TO THE ATTENTION OF LANDSCAPE ARCHITECT. LANDSCAPE CONTRACTOR IS RESPONSIBLE FOR INSTALLATION OF THE LANDSCAPE PLAN. LANDSCAPE PLAN SHALL TAKE PRECEDENCE OVER PLANT LIST.
- LANDSCAPE CONTRACTOR SHALL LOCATE AND VERIFY ALL UNDERGROUND UTILITIES PRIOR TO DIGGING, SUNSHINE STATE ONE CALL OF FLORIDA. (800) 432-4770.
- ALL TREES TO BE STAKED IN A GOOD WORKMANLIKE MANNER, NO NAIL STAKING IN TRUNKS PERMITTED. ALL GUYING & STAKING TO BE REMOVED WITHIN 12 MONTHS AFTER PLANTING.
- ALL PLANTING BEDS TO BE WEED AND GRASS FREE, AND SHALL BE EXCAVATED TO A DEPTH OF 12" BELOW GRADE. TOP OF BEDS SHALL BE 3" BELOW ADJ. PAVED SURFACES. ALL CONSTRUCTION DEBRIS SHALL BE REMOVED.
- ALL INVASIVE EXOTIC PLANTS (CAT.1) TO BE REMOVED FROM SITE, PRIOR TO LANDSCAPE ARCHITECTS' FINAL INSPECTION. REFER TO FLORIDA EXOTIC PEST PLANT COUNCIL (FLEPPC) 2015 LIST OF EXOTIC PLANT SPECIES, CAT.#1, ONLY.
- ALL SOD SHALL BE ZOYSIA "EMPIRE" SOLID SOD. AND LAID WITH ALTERNATING AND BUTTING JOINTS. SOD SHALL BE LAID OVER A 2" LAYER OF TOPSOIL. LANDSCAPE CONTRACTOR SHALL NOTIFY LANDSCAPE ARCHITECT, PRIOR TO INSTALLATION.
- MULCH SHALL BE EUCALYPTUS OR PINE BARK MULCH, (UNLESS OTHERWISE NOTED) APPLIED AT A MIN. DEPTH OF 3" OVER PLANTING BEDS. MULCH SHALL NOT BE APPLIED OVER ANNUAL PLANTING BEDS. MULCH SHALL NOT BE PLACED WITHIN 6" OF TREE & PALM TRUNKS. TOP OF MULCH SHALL NOT EXCEED HEIGHT OF ADJACENT PAVED SURFACES.
- ALL PLANTED AREAS TO RECEIVE 100% COVERAGE BY AN AUTOMATIC IRRIGATION SYSTEM, WITH A MINIMUM OF 50% OVERLAP. RAIN SENSOR TO BE PROVIDED. IRRIGATION SYSTEM TO BE INSTALLED IN COMPLIANCE W/ FLORIDA BUILDING CODE, (FBC), LATEST EDITION. BUBBLERS SHALL BE INSTALLED ON ALL RELOCATED & INSTALLED TREES & PALMS TO AID IN THEIR ESTABLISHMENT. REFER TO LANDSCAPE PLAN.
- LANDSCAPE CONTRACTOR TO GUARANTEE ALL PLANT MATERIAL FOR 1 YEAR PERIOD FOLLOWING FINAL ACCEPTANCE BY THE TOWN OF GOLDEN BEACH.

Plant List

Qty	Key	Botanical / Common Name	Specification	Native Y/N	Mitigation
2	CD	Coccoloba diversifolia / Pigeon Plum	Street trees 14' oa ht, 7' spr, 3" cal, 4'CT.	Yes	
1	CES	Conocarpus e. sericeus / Silver Buttonwood	Street tree 14' oa ht, 7' spr, 3" cal, 4'CT.	Yes	
1	CES	Conocarpus e. sericeus / Silver Buttonwood	Req'd tree 14' oa ht, 7' spr, 3" cal, 4'CT.	Yes	1 tree
4	EF	Eugenia foetida / Spanish Stopper	Req'd tree 12' oa ht, 6' spr, 2" cal.	Yes	4 trees
3 Street trees, 5 Req'd trees					
Req'd Shrubs:					
25	MYF	Myricanthes fragrans / Simpson Stopper	3-4' ht, 1.5' spr, 7 gal.	Yes	
18	EUR	Eugenia rhombea / Red Stopper	2' ht, 1.5' spr, 7 gal.	Yes	
20	PSN	Psychotria nervosa / Wild Coffee	1.5' ht, 1.5' spr, 7 gal.	Yes	
63 Prov'd Shrubs, 63 Native					
Additional plant material: Accents & Groundcovers:					
9	RHE	Rhapis excelsa / Lady Palm	5' oa ht, 3' spr, matched.	No	
15	ZAP	Zamia pumila / Coontie	2' ht, 2' spr, 7 gal.	Yes	
52	FIM	Ficus microcarpa / Green Island Ficus	1.5' ht, 1.5' spr, 7 gal.	No	
Roof Level Landscape Plan					
2	TR	Thrinax radiata / Thatch Palm	6', 8' oa hts,	Yes	
3	RHE	Rhapis excelsa / Lady Palm	5' oa ht, 3' spr, matched.	No	
10	COE	Conocarpus erectus / Green Buttonwood	3-4' ht, 1.5' spr, 7 gal.	Yes	
11	CHH	Chrysobalanus horizontalis / Horizontal Cocoplum	1.5' ht, 1.5' spr, 3 gal.	Yes	
8	FAJ	Farugium japonicum / Leopard Plant	1.5' ht, 1.5' spr, 3 gal.	No	
21 Prov'd Shrubs, 21 Native (COE+CHH)					

Note:
9 Small trees/ tall shrubs are required. Zero (0) are provided, due to lack of planting space.
The 9 small trees / tall shrubs deficit will be accounted for by a contribution of \$2700.00 (\$300.00 x 9) contribution to the City of Miami Beach's Tree Trust Fund.

City of Miami Beach, Florida
LANDSCAPE LEGEND
Chapter 4- Miami Beach Resiliency Code

Zoning District: TC-C Net Lot Area: .14 acres 6,250 sf

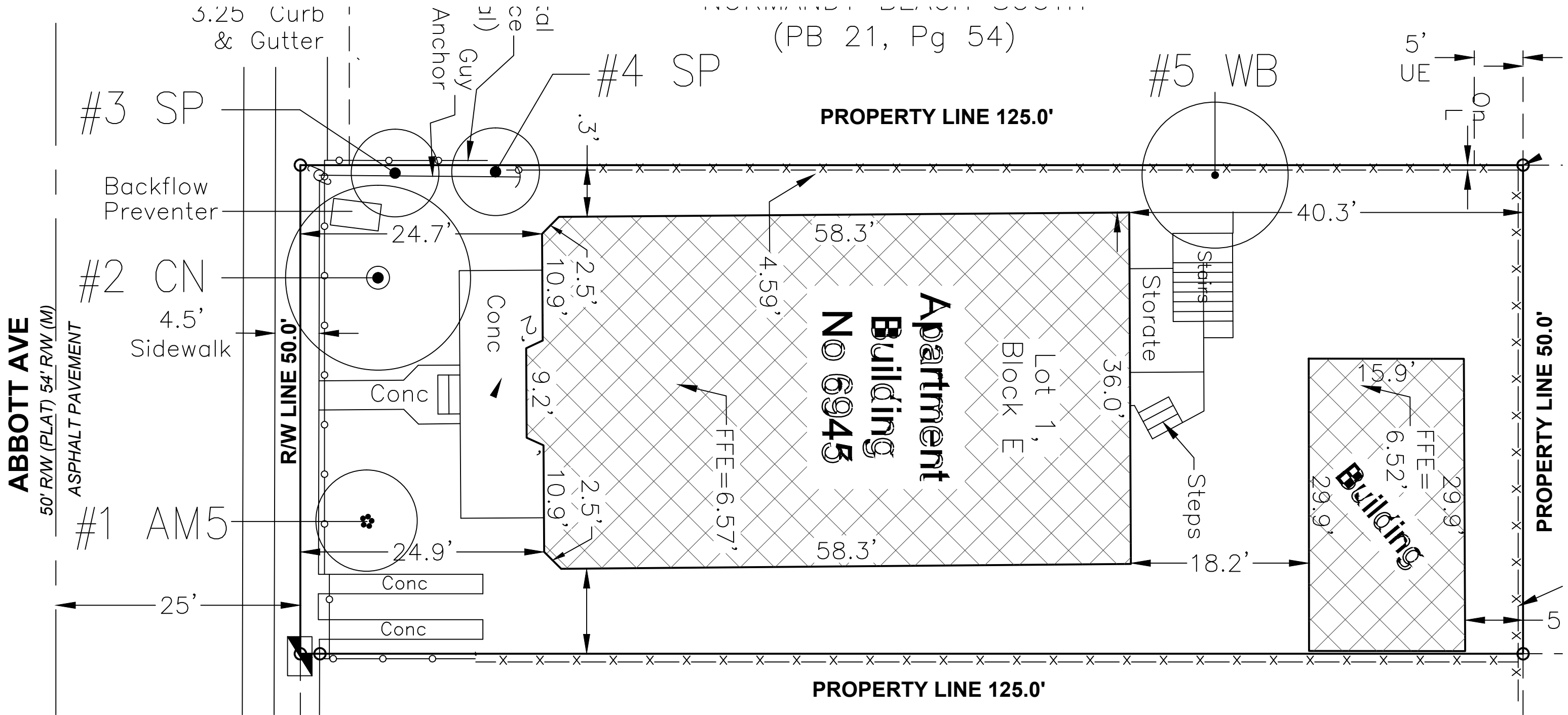
OPEN SPACE	REQUIRED	PROVIDED
Square Feet of open space required, as indicated on site plan: A. Net lot area = <u>6,250</u> s.f. x <u> </u> % = <u> </u> sf	A.	A.
Total square feet of landscaped open space required by Chapter 126 -Table A B. Maximum lawn area (sod) permitted = <u> </u> % x <u> </u> square feet =	B.	B.
C. No. of trees required per net lot acre: <u>TC-C = 22 trees per acre</u> <u>22 x .14 = 3 (3.0)</u>	C. 3	C.4 prop.
D. Less existing number of trees meeting minimum requirements: 30% Natives trees required = the number of trees required x 30% = 50% (min.) shall be low maintenance or drought & salt tolerant species. Diversity: 1-5 req'd = 2 16-20 req'd = 5 Species Req'd 6-10 req'd = 3 21-30 req'd = 6 11-15 req'd = 4 30+ req'd = 7 Palms may be planted in addition. Shall not count as req'd trees.	D. 0 Exist.	D. 0 Exist.
E. Street trees (max. avg. spacing @ 20' o.c.): <u>50'</u> linear feet along street / 20' = <u>2.5'</u> Palms may be planted in addition to req'd street trees. Do not count as req'd.	E. 3	E. 3
F. Street trees located directly beneath power lines (max. avg. spacing @ 20' o.c.): <u>DNA</u> linear feet along street / 20' = <u> </u>	F. DNA	F. DNA
G. Total number of trees provided C+E/F =	G. 7 req'd	G. 7 Prov'd
H. Total number of trees req'd (C+D/E) x 12 = the number of shrubs req'd (18-24" ht) The number of shrubs required x 50% = the number of native shrubs req'd (One species cannot exceed 50% of the req'd total.) Shrubs shall be planted to screen equip. at a ht. = to the equip.	H. 84	H. 84
I. Large shrubs or small trees shall be planted at 10% of the req'd shrub total. & shall be in addition to the shrub total. 50% min. native req'd. Vines shall be a min. of 30" ht. One-to-one basis as a req'd shrub. Groundcovers and grasses shall be planted with a min. of 75% coverage.	I. 9/5	I. 0/0

Herbert L Martin
Digitally signed by Herbert L Martin
Date: 2025.06.23 16:31:38 -0400'

- L 10 Landscape Plan
- L 10.1 Roof Level Landscape Plan
- L 11 Notes, Details, Plant List, Legend
- L 12 Tree Survey / Disposition Plan
- L 13 Landscape Lighting Plan



ARCHITECT	CONSULTANT	OWNER	PROJECT	DRAWING TITLE	DRAWING #
M77R 7290 NW 1ST COURT MIAMI FL 33150 www.ma77er.com	HL MARTIN, LANDSCAPE ARCHITECT, PA LA #0001722 5965 SW 38 ST MIAMI FL 33155 305.790.4372	ABBOTT M 6945 LLC 6945 ABBOTT AVE MIAMI BEACH FL 33141	6945 ABBOTT AVE	Notes, Details, Plant List, Legend 2025.05.12 1" = 10'-0" 2407	L 11



Tree Survey List										
Num	Botanical / Common Name	Disposition	Description	DBH	Condition	Number of Stems	HT	SPR	CRZ	Mitigation
#1	AM5	Adonia merrillii / Christmas Palm 5 trunks	26	Good	5	15	15	N/A		1 tree
#2	CN	Cocos nucifera / Coconut Palm	28	Good	1	23	19	N/A		1 tree
#3	SP	Sabal palmetto / Sabal palm	12"	Good	1	17	9	N/A		1 tree

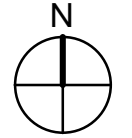
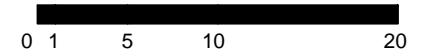
Note: Palm Descriptions DBH, HT, SPR by Surveyor. Visual identification by Landscape Architect, based on photographs provided.

#5 WB	Wodetyia bifurcata / Foxtail Palm	--Remove--	5"	Good	1	15'	15'	10'	1 tree
-------	-----------------------------------	------------	----	------	---	-----	-----	-----	--------

Tree Survey Notes:

- 0" dbh to be removed--(trees only) DBH to be removed: 0"
- Ch. 46-Section 46-61.(1) 0" dbh to be removed= 0 Trees Total Palms to be removed: (5)
- Palm Mitigation Requirement:
Removal of a palm shall be replaced w/ (1) 14' ht, 6' spr, 2" dbh tree
Palms to be removed = 5 Trees
- Total Mitigation Requirement:
=5 Mitigation Trees req'd.

● Indicates existing palm to be removed.



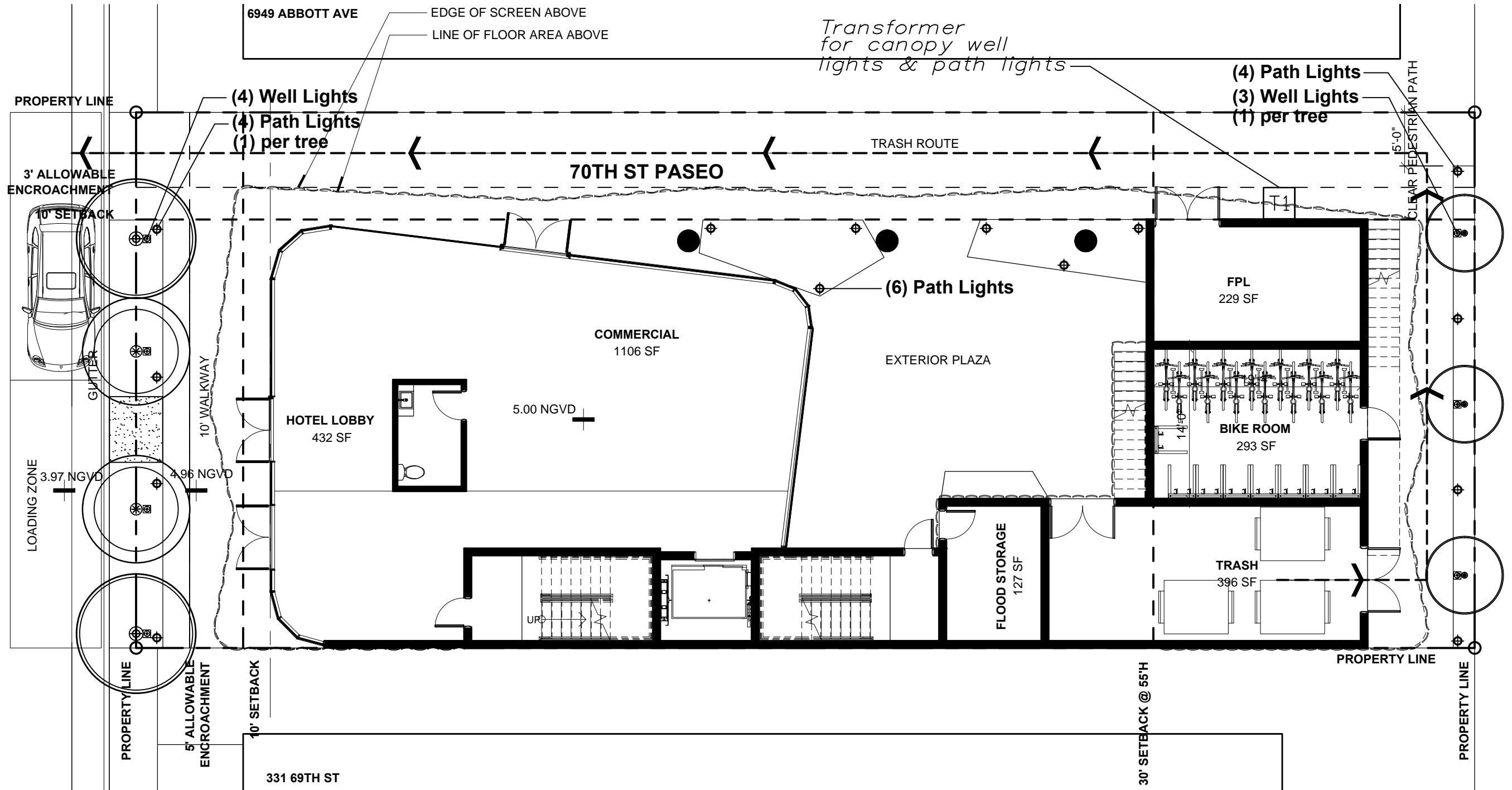
- L 10 Landscape Plan
- L 10.1 Roof Level Landscape Plan
- L 11 Notes, Details, Plant List, Legend
- L 12 Tree Survey / Disposition Plan
- L 13 Landscape Lighting Plan

Herbert L Martin
Digitally signed by Herbert L Martin
Date: 2025.06.23 16:31:57 -04'00'



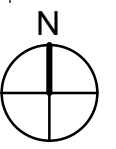
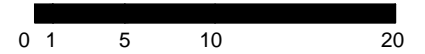
ARCHITECT	CONSULTANT	OWNER	PROJECT	DRAWING TITLE	DRAWING #
M77R 7290 NW 1ST COURT MIAMI FL 33150 www.ma77er.com	HL MARTIN, LANDSCAPE ARCHITECT, PA LA #0001722 5965 SW 38 ST MIAMI FL 33155 305.790.4372	ABBOTT M 6945 LLC	6945 ABBOTT AVE	Tree Survey / Disposition Plan 2025.05.12 1" = 10'-0"	L 12 2407

ABBOTT AVE
50' R/W (PLAT) 54' R/W (M)
ASPHALT PAVEMENT



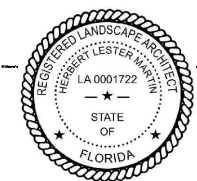
LIGHTING EQUIPMENT TABLE

Landscape Lighting by Kichler Lighting		
7	WELL LIGHT (CANOPY UP LIGHT) Kichler 1548ICBR (20w)	TRANSFORMER Kichler 15 PR (Professional) 7 canopy up-lights @ 20w = 140w 14 path lts. @ 4.3w = 60.2w 300 w Capacity 202.2w
14	PATH LIGHT Kichler Rippley 15800 BBR (4.3w)	



Herbert L Martin
Digitally signed by Herbert L Martin
Date: 2025.06.23 16:32:15 -04'00'

- L 10 Landscape Plan
- L 10.1 Roof Level Landscape Plan
- L 11 Notes, Details, Plant List, Legend
- L 12 Tree Survey / Disposition Plan
- L 13 Landscape Lighting Plan



ARCHITECT	CONSULTANT	OWNER	PROJECT	DRAWING TITLE	DRAWING #
M77R 7290 NW 1ST COURT MIAMI FL 33150 www.ma77er.com	HL MARTIN, LANDSCAPE ARCHITECT, PA LA #0001722 5965 SW 38 ST MIAMI FL 33155 305.790.4372	ABBOTT M 6945 LLC 6945 ABBOTT AVE MIAMI BEACH FL 33141	6945 ABBOTT AVE	LANDSCAPE LIGHTING PLAN 2025.05.12 1" = 10'-0"	2407

L 13