



FRONT OVERALL RENDERING  
FROM DILIDO DR. [W/ LANDSCAPE]



01  
SMOOTH HIGH-QUALITY  
PAINTED WHITE STUCCO



02  
BOARD-FORMED CONCRETE



03  
TRAVERTINE CLADDING



04  
BLACK ALUM. BRAKE METAL



05  
WOOD ACCENTS  
(COVET\_KURI MASAME)



06  
CLEAR LOW-E GLAZING



07  
IPE WOOD CLADDING



08  
SMOOTH HIGH-QUALITY  
PAINTED BLACK STUCCO



FRONT OVERALL RENDERING  
FROM DILIDO DR. [LANDSCAPE HIDDEN]



01  
SMOOTH HIGH-QUALITY  
PAINTED WHITE STUCCO



02  
BOARD-FORMED CONCRETE



03  
TRAVERTINE CLADDING



04  
BLACK ALUM. BRAKE METAL



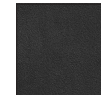
05  
WOOD ACCENTS  
(COVET\_KURI MASAME)



06  
CLEAR LOW-E GLAZING



07  
IPE WOOD CLADDING



08  
SMOOTH HIGH-QUALITY  
PAINTED BLACK STUCCO



PEDESTRIAN ENTRY  
LOOKING WEST TO ENTRY



01  
SMOOTH HIGH-QUALITY  
PAINTED WHITE STUCCO



02  
BOARD-FORMED CONCRETE



03  
TRAVERTINE CLADDING



04  
BLACK ALUM. BRAKE METAL



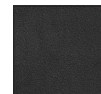
05  
WOOD ACCENTS  
(COVET\_KURI MASAME)



06  
CLEAR LOW-E GLAZING



07  
IPE WOOD CLADDING



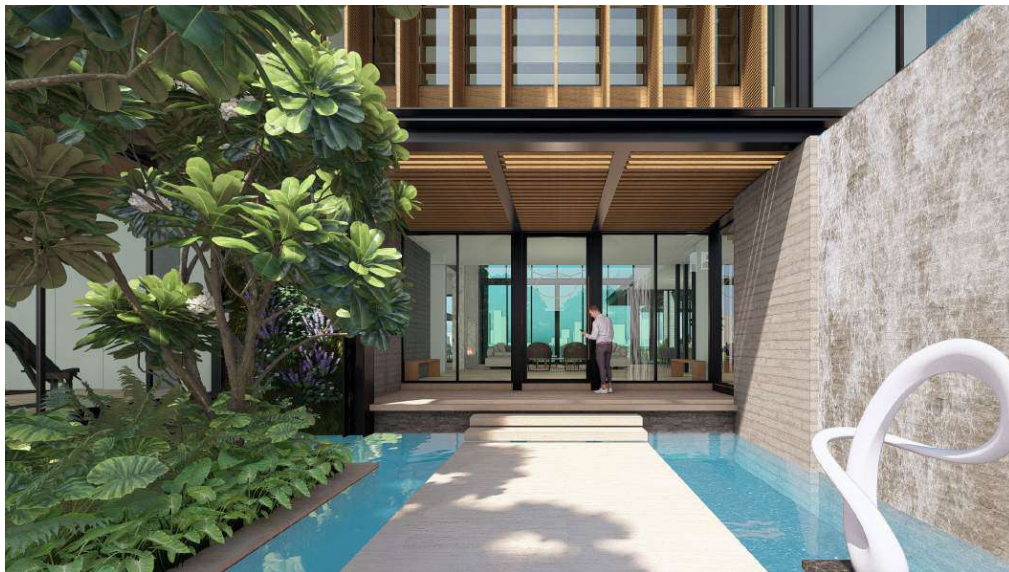
08  
SMOOTH HIGH-QUALITY  
PAINTED BLACK STUCCO



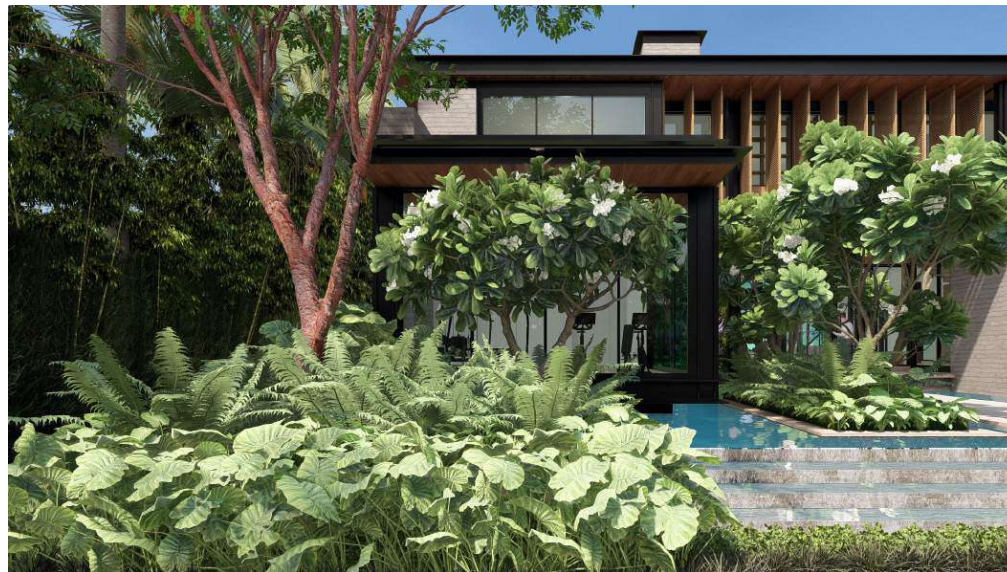
FRONT OVERALL \_ FROM DIDILO DR. [LOOKING NORTHWEST]



FRONT OVERALL \_ FROM DIDILO DR. [LOOKING SOUTHWEST]



FRONT ENTRY \_ LOOKING WEST TO ENTRY



FRONT YARD \_ LOOKING WEST TO GYM



REAR OVERALL  
FROM BISCAYNE BAY WATERWAY  
[LOOKING EAST]



01  
SMOOTH HIGH-QUALITY  
PAINTED WHITE STUCCO



02  
BOARD-FORMED CONCRETE



03  
TRAVERTINE CLADDING



04  
BLACK ALUM. BRAKE METAL



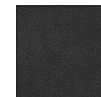
05  
WOOD ACCENTS  
(COVET\_KURI MASAME)



06  
CLEAR LOW-E GLAZING



07  
IPE WOOD CLADDING



08  
SMOOTH HIGH-QUALITY  
PAINTED BLACK STUCCO



REAR YARD  
EDGE OF POOL [LOOKING EAST]



01  
SMOOTH HIGH-QUALITY  
PAINTED WHITE STUCCO



02  
BOARD-FORMED CONCRETE



03  
TRAVERTINE CLADDING



04  
BLACK ALUM. BRAKE METAL



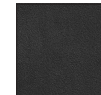
05  
WOOD ACCENTS  
(COVET, KURI MASAME)



06  
CLEAR LOW-E GLAZING



07  
IPE WOOD CLADDING



08  
SMOOTH HIGH-QUALITY  
PAINTED BLACK STUCCO



REAR OVERALL \_ FROM BISCAYNE BAY WATERWAY [LOOKING SOUTHEAST]



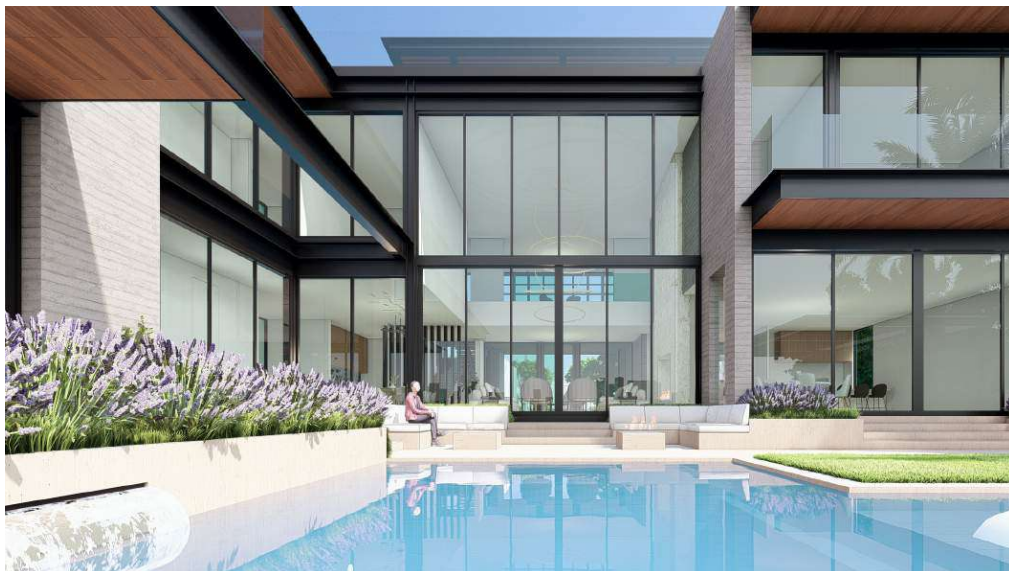
REAR OVERALL \_ FROM BISCAYNE BAY WATERWAY [LOOKING NORTHEAST]



REAR YARD \_ NORTH LAWN [LOOKING EAST]



REAR YARD \_ SOUTH LAWN [LOOKING NORTHEAST]



POOL VIEW [LOOKING EAST]



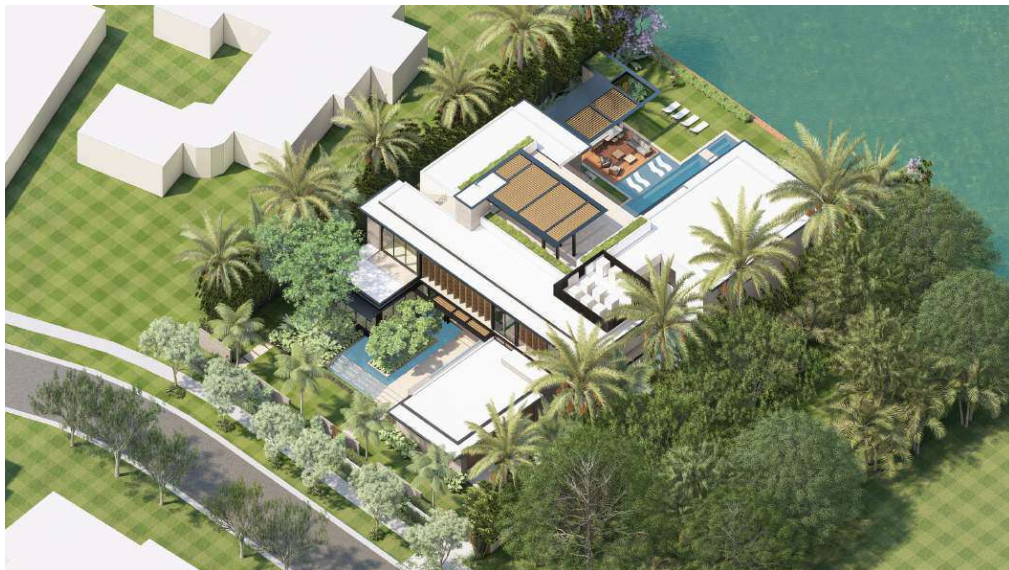
EXTERIOR TERRACE [LOOKING WEST]



BBQ DECK [LOOKING NORTH]



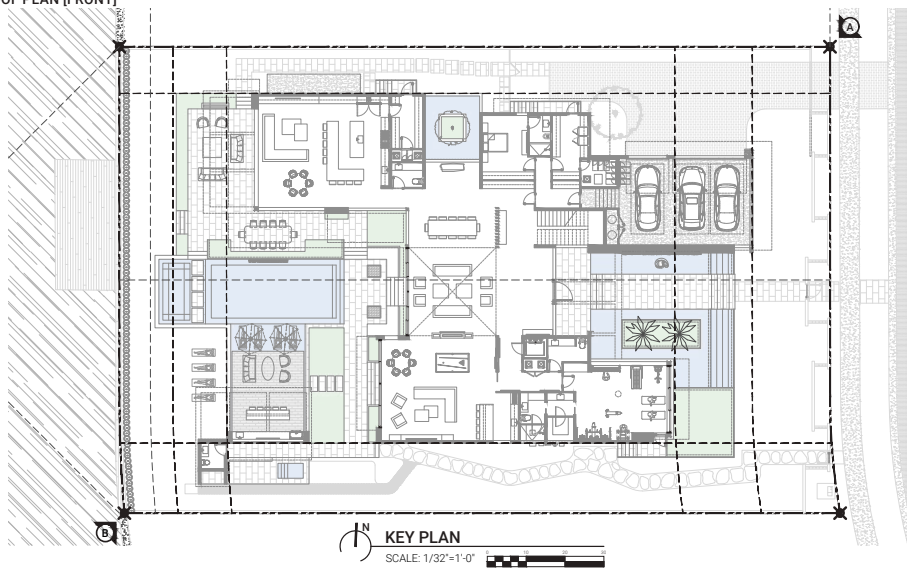
EXTERIOR TERRACE [LOOKING SOUTH]



A-3 \_ ROOF PLAN [FRONT]



A-2 \_ SECOND FLOOR [FRONT]



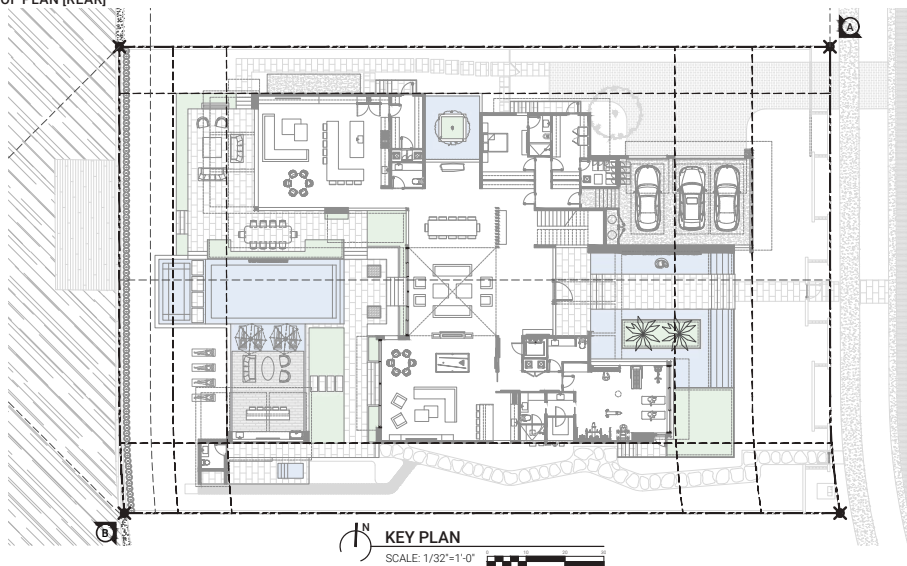
A-1 \_ FIRST FLOOR [FRONT]



B-3 \_ ROOF PLAN [REAR]



B-2 \_ SECOND FLOOR [REAR]

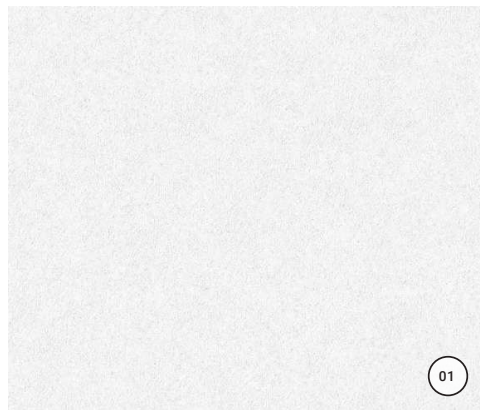


B-1 \_ FIRST FLOOR [REAR]



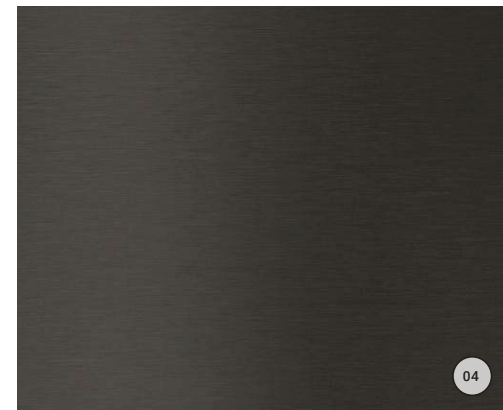
IPE WOOD CLADDING (SOFFITS)

07



SMOOTH HIGH-QUALITY PAINTED WHITE STUCCO

01



BLACK ALUM. BRAKE METAL (WINDOWS / FASCIA)

04



RIVER ROCK



CLEAR LOW-E GLAZING

06



WOOD ACCENTS (COVET\_KURI MASAME)

05



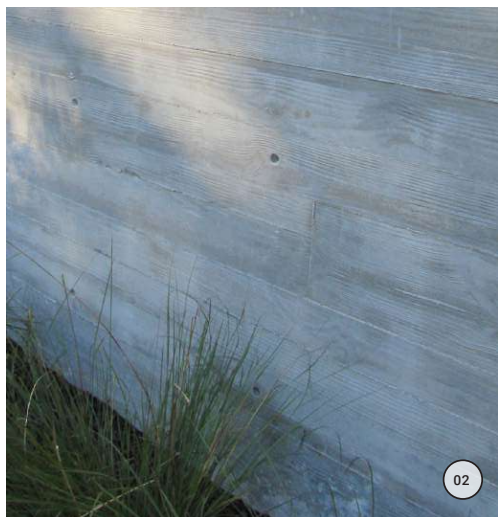
SMOOTH HIGH-QUALITY PAINTED BLACK STUCCO

08



LIGHT TRAVERTINE FLOORING

03



BOARD FORMED CONCRETE

02



GREY TUSCAN DRIVEWAY PAVER



BLACK PEARL PEBBLE TEC POOL

BLACK PEARL PEBBLE TEC POOL



LIGHT OAK WOOD FINISH (INTERIOR FLOORING)