



A Proposal for Bayshore Park Miami Beach

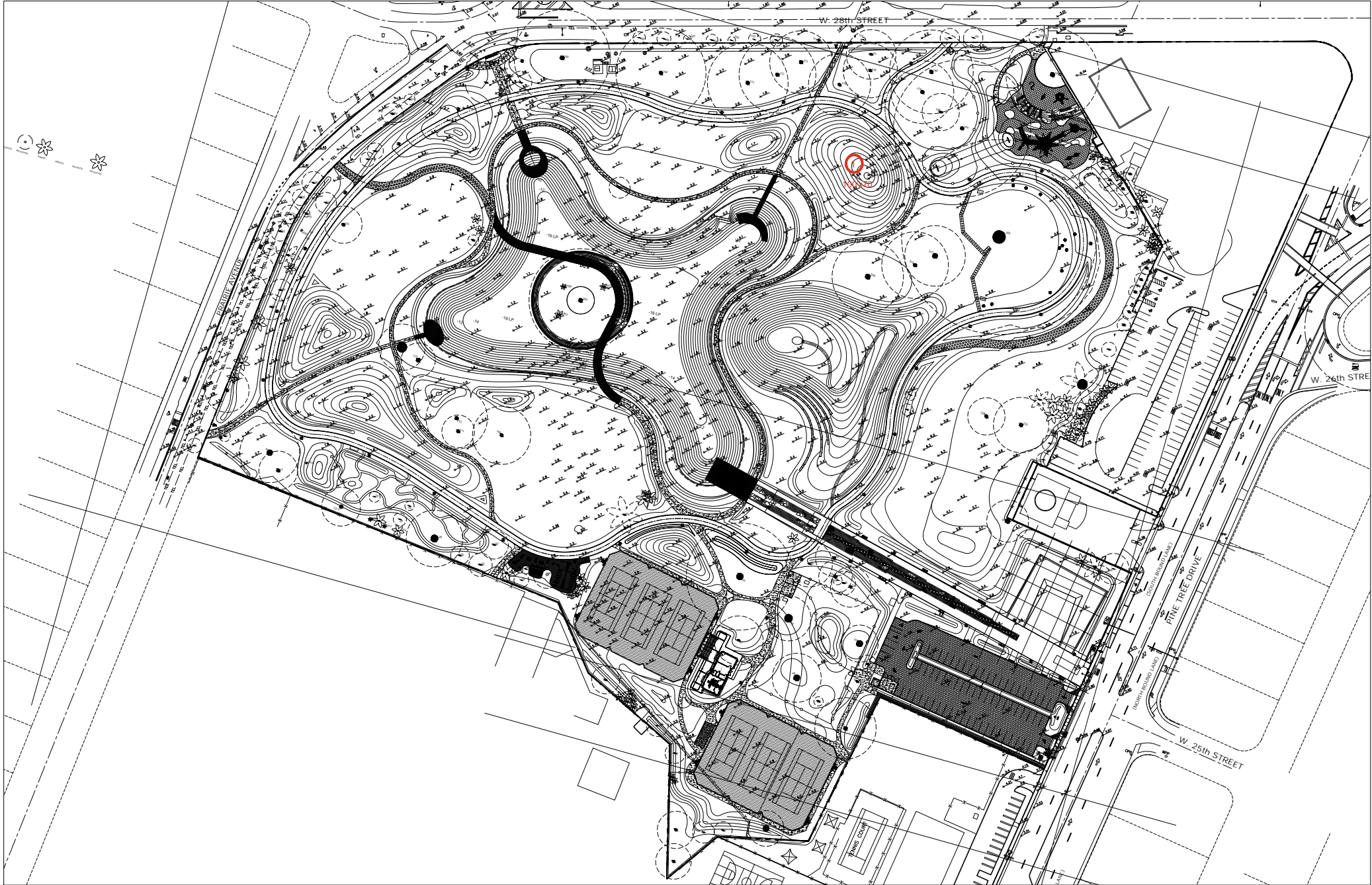
Michele Oka Doner

Bird House
A radiant icon
for
Miami Beach
at Bayshore
Park



Michele Oka Doner









Selected Public Commissions

Michele Oka Doner



Palm Goddess for Malta
(2022)

Cast Bronze
18 ft.

Commissioned by
Heritage Malta
Valletta

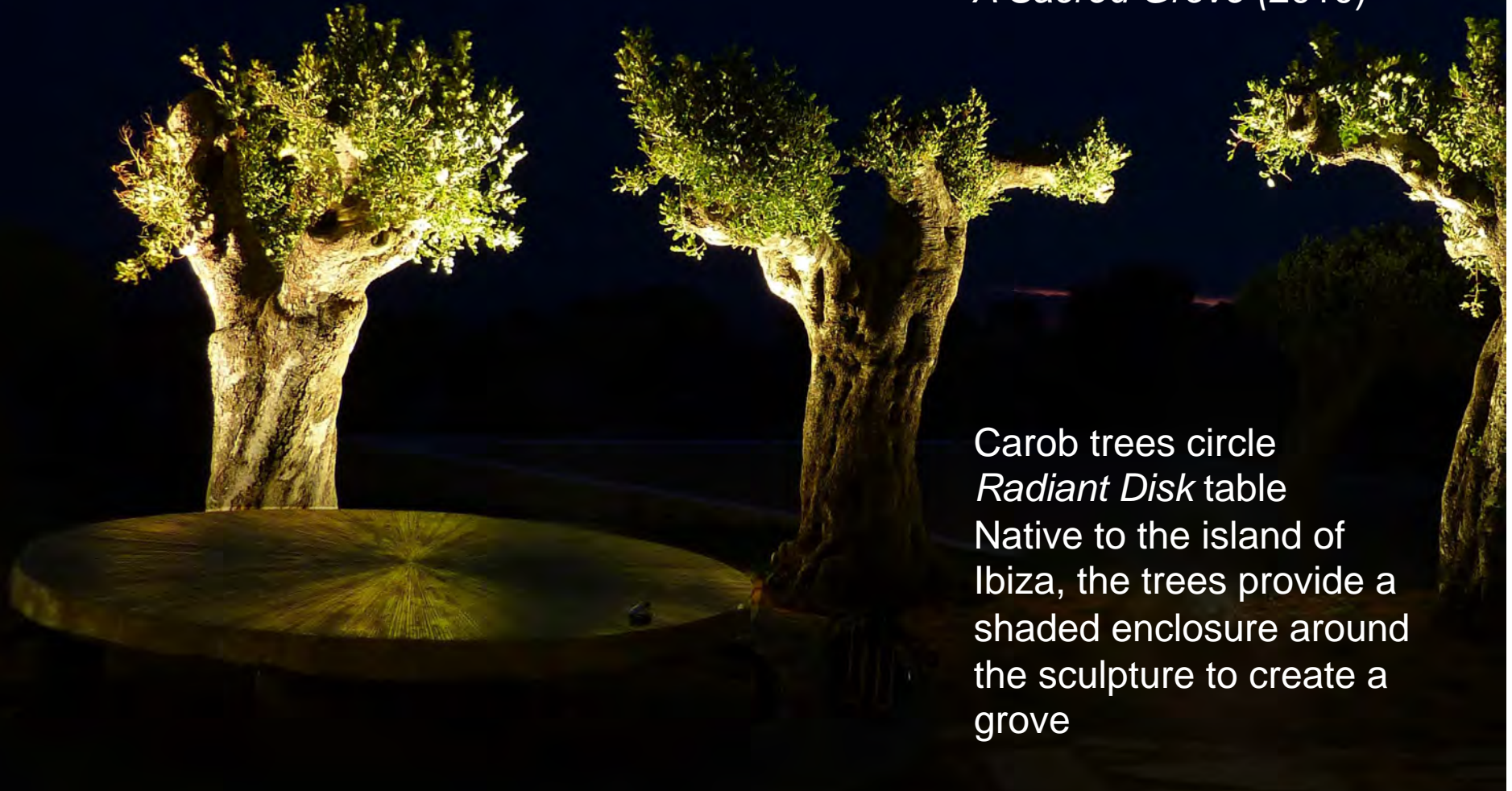


Palm Goddess,
on the main
street of the
capital in Malta,
embodies
human
aspiration, the
desire to be
lifted up, and
moved forward
by
creative
expression



The integration of human form with nature speaks to the new generation in Malta, linking them to their ancient past

A Sacred Grove (2010)



Carob trees circle
Radiant Disk table
Native to the island of
Ibiza, the trees provide a
shaded enclosure around
the sculpture to create a
grove

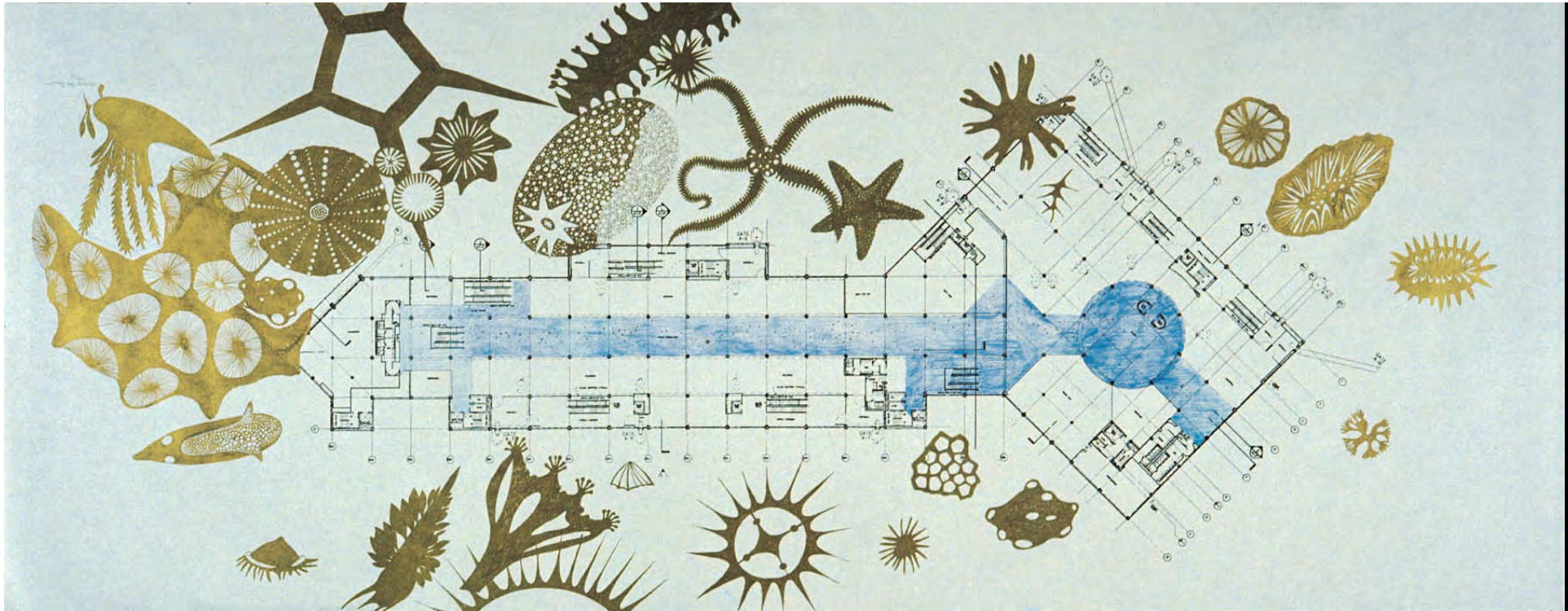


Ice Ring bench circles
Radiant Disk table
Cast Bronze
Bench: 10 ft. dia.
Table: 6 ft. 6 in.
Ibiza, Spain

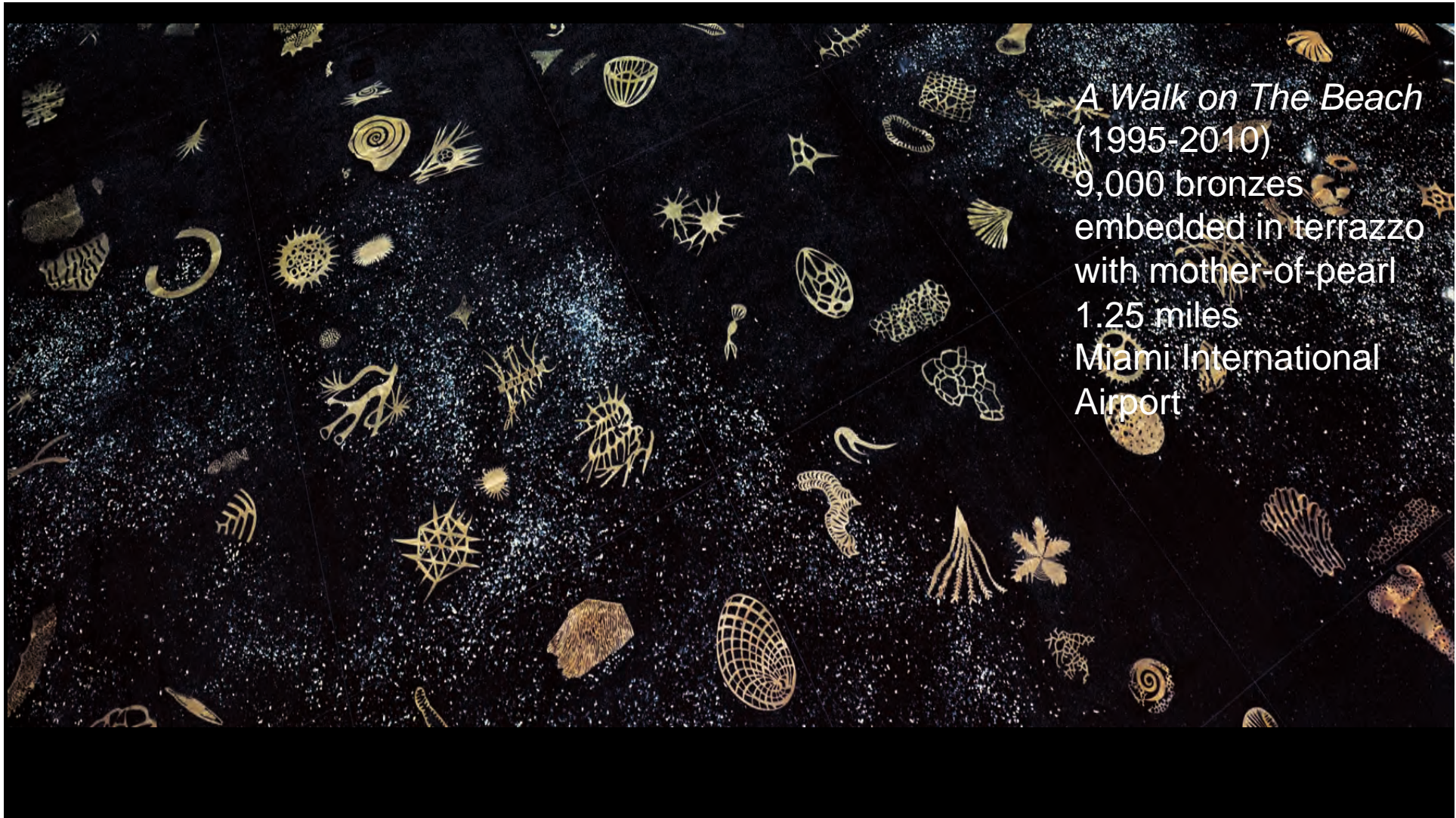
Commissioned by Guy
Laliberté, founder, Cirque
du Soleil



Lanterns add a note
of magic to the grove



Proposal Drawing, *A Walk on The Beach*
Miami International Airport (1991)



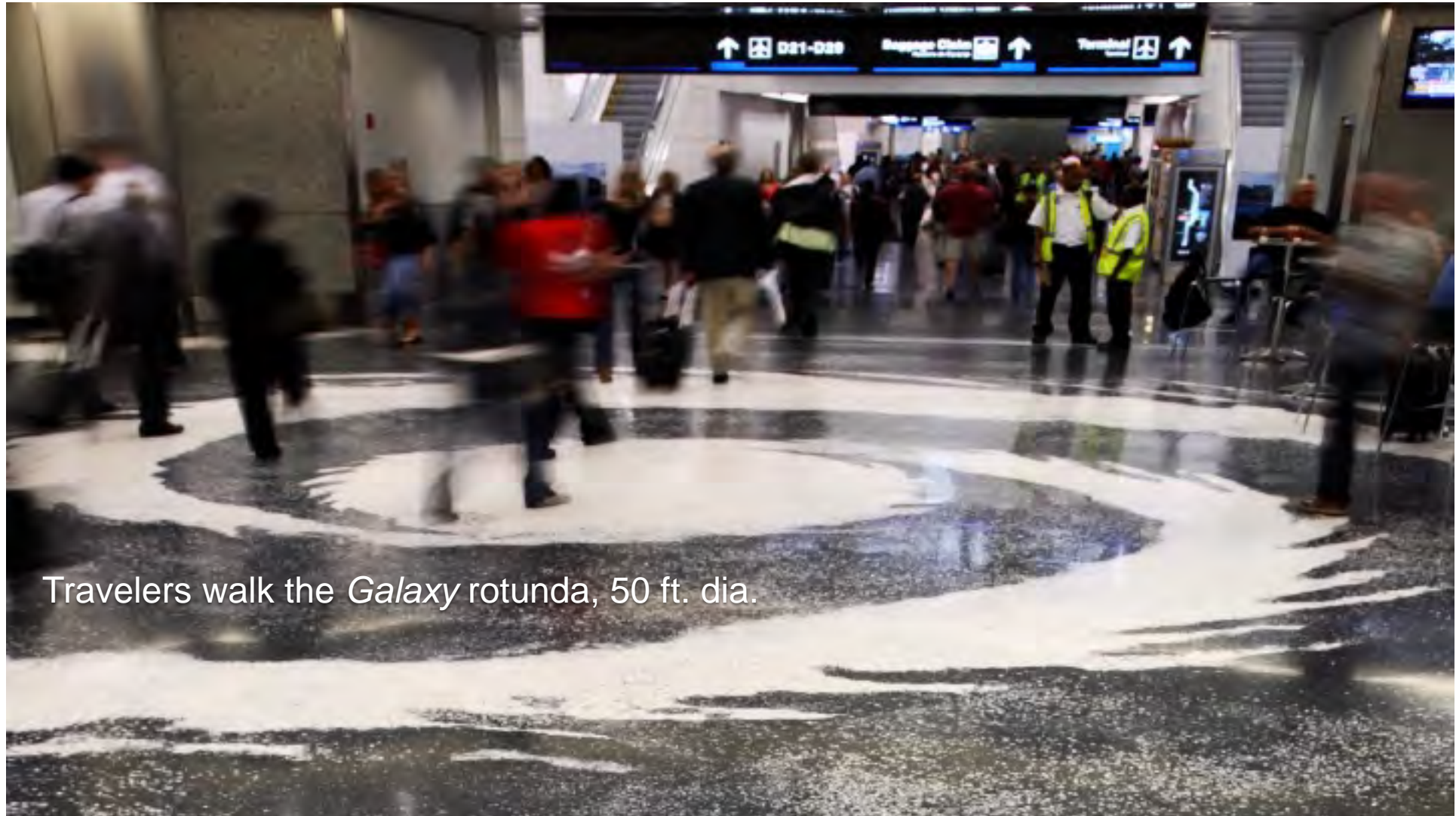
A Walk on The Beach
(1995-2010)
9,000 bronzes
embedded in terrazzo
with mother-of-pearl
1.25 miles
Miami International
Airport



A Walk on the Beach invites visitors to the airport on a journey within a journey. The embedded bronzes emphasize the pelagic beauty of South Florida.



Colony of
Star Corals
commonly
found in
South Florida



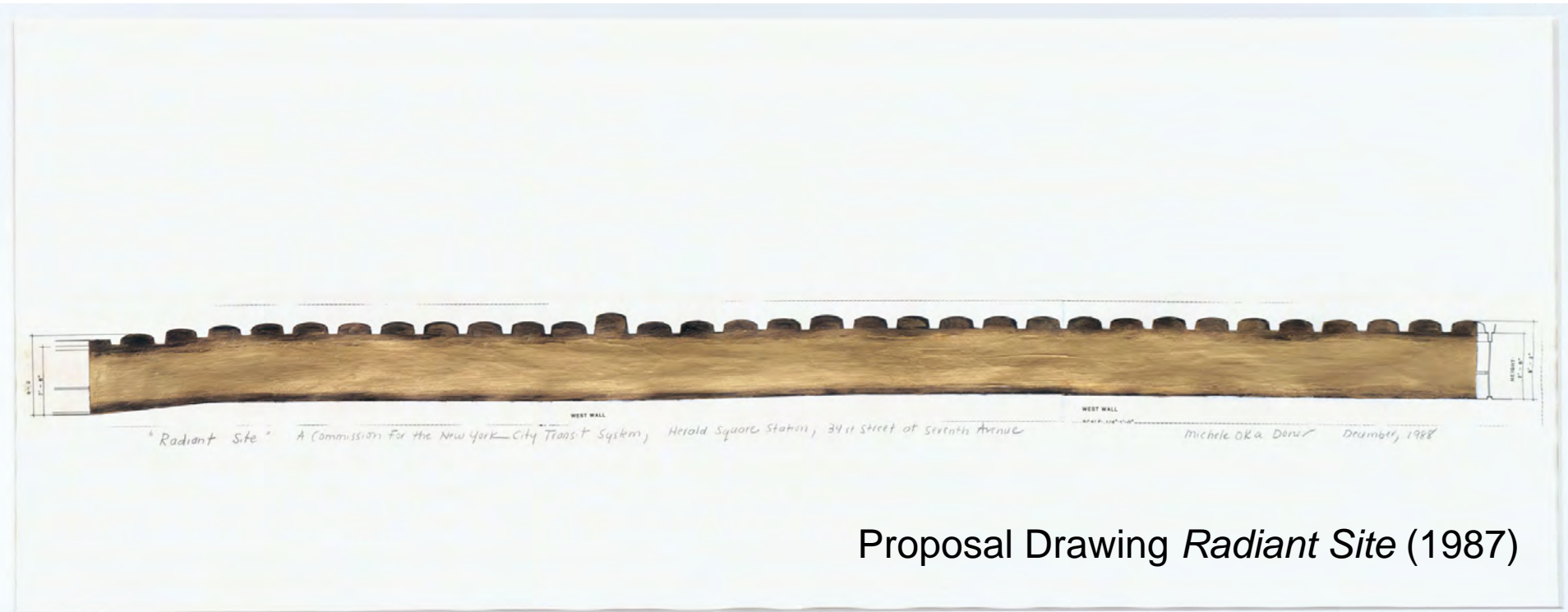
Travelers walk the *Galaxy* rotunda, 50 ft. dia.



Radiant Site (1990)
11,000 hand-made
gold lustre tiles
9 h. x 165 ft. l.
Herald Square Transit
Station, NYC
Commissioned by
MTA Arts in Transit
program
National competition.

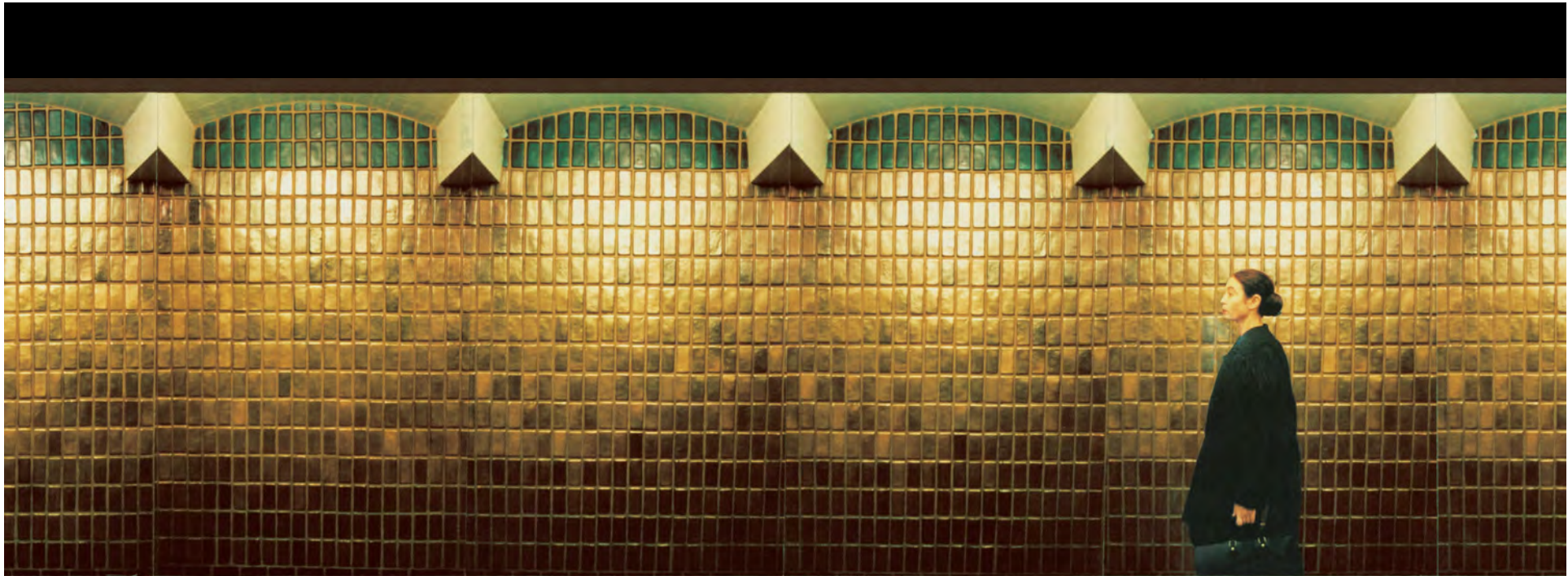
Proposal Drawing
(1987)

*Perspective Drawing, "Radiant Site", Herald Square Station
michele oka Donev New York City 1988*



Proposal Drawing *Radiant Site* (1987)

“For the largest intersection in the world, I will be making thousands of gold tiles, creating a zone of radiance and reflectivity, replacing the sensation one has of descending into dark, once associated with the subway, instead giving them light to soothe not only the eye but the mind of all travelers.” Proposal excerpt



Section of 165 ft long wall





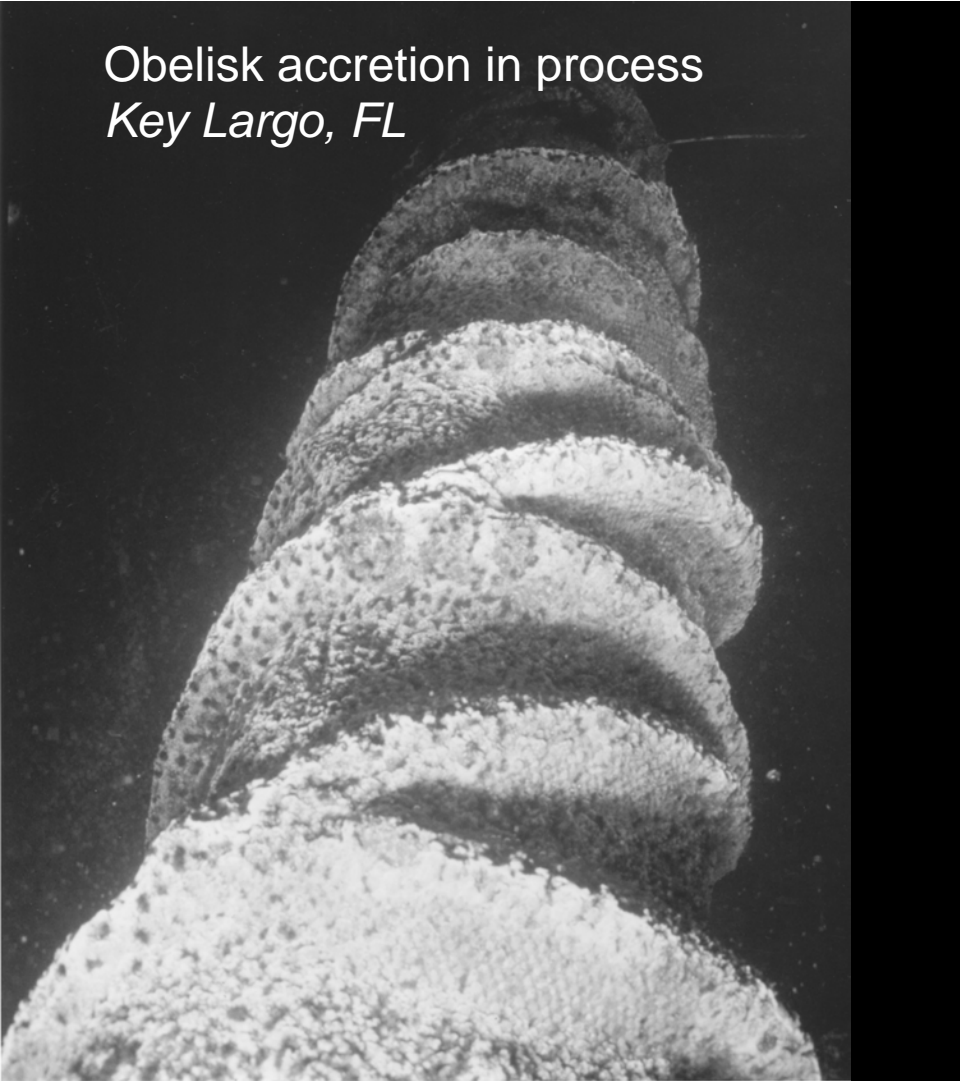
Wave & Shell Obelisks
(1991)

Copper tubing, PVC
pipe, copper mesh,
accreted minerals
13 ft. by 13 x 14 in.
Ocean Park
Santa Monica, CA

Commissioned by the
City of Santa Monica



Obelisk accretion in process
Key Largo, FL



Micco Pavilion (2013)
Doral City Hall Park
Doral, FL
50 x 25 x 35 ft.
Cast concrete and steel

Micco started
with two pieces
of bark



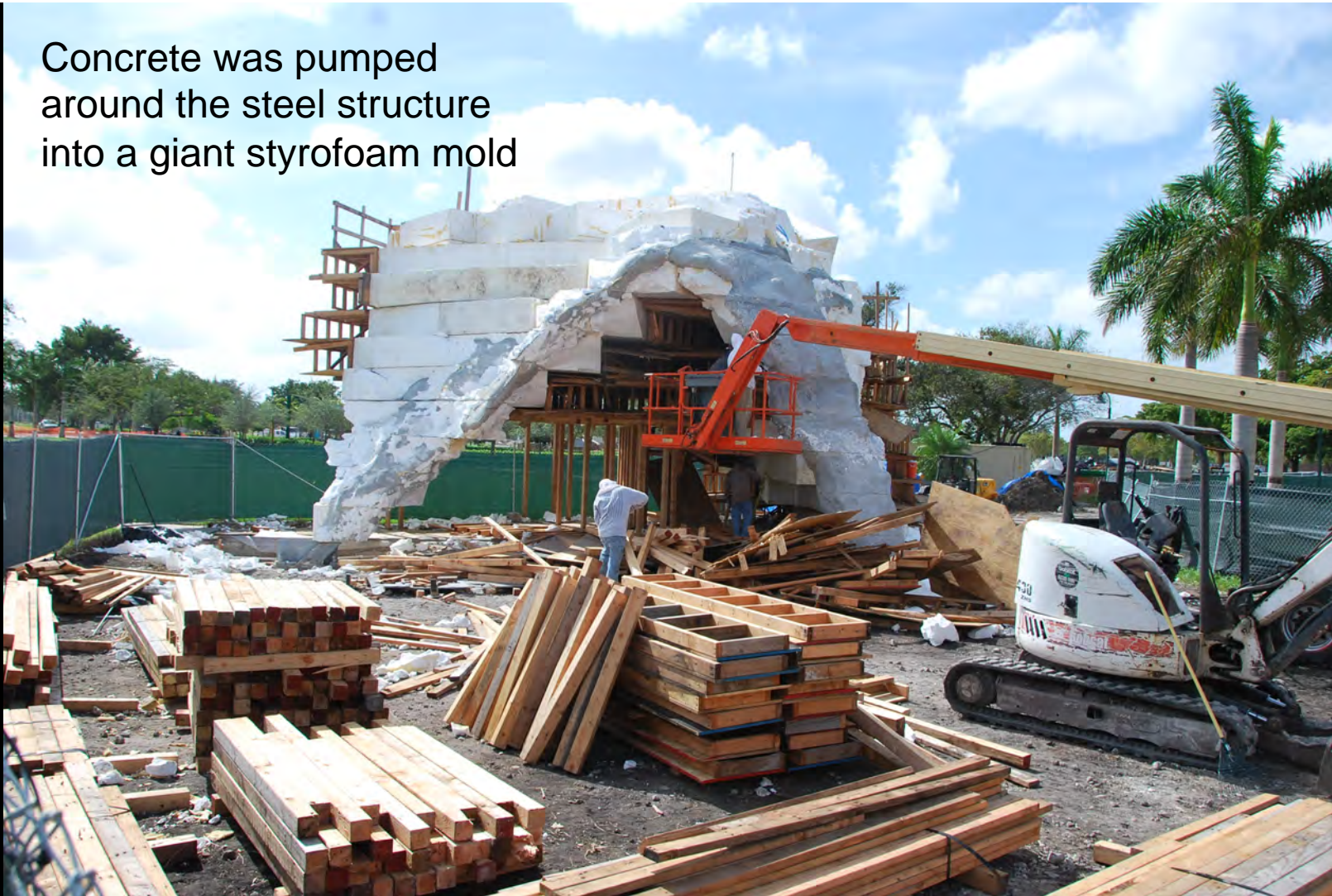
Which lead to a conceptual rendering of the sculpture



A dinosaur-like internal steel structure



Concrete was pumped
around the steel structure
into a giant styrofoam mold



Native
grasses
surrounding
the
sculpture
provide
additional
volume
and create
context in
Doral's City
Hall Park



Micco, a recognizable icon for the City of Doral, a place where the community gathers



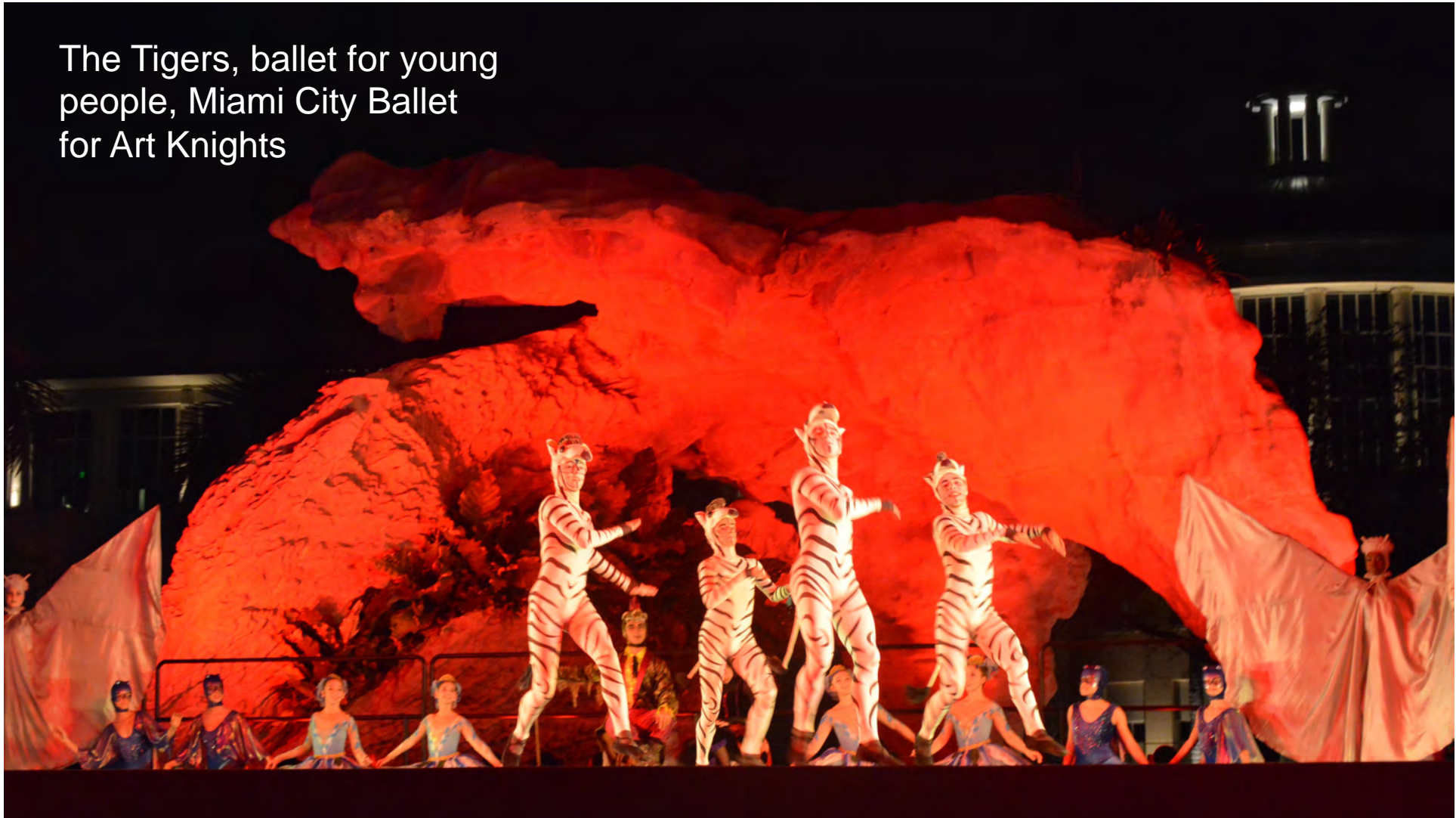
Micco at dusk



Sunday
Afternoon
concert:
Miami
International
Symphony
Orchestra
(MISO)



The Tigers, ballet for young people, Miami City Ballet for Art Knights





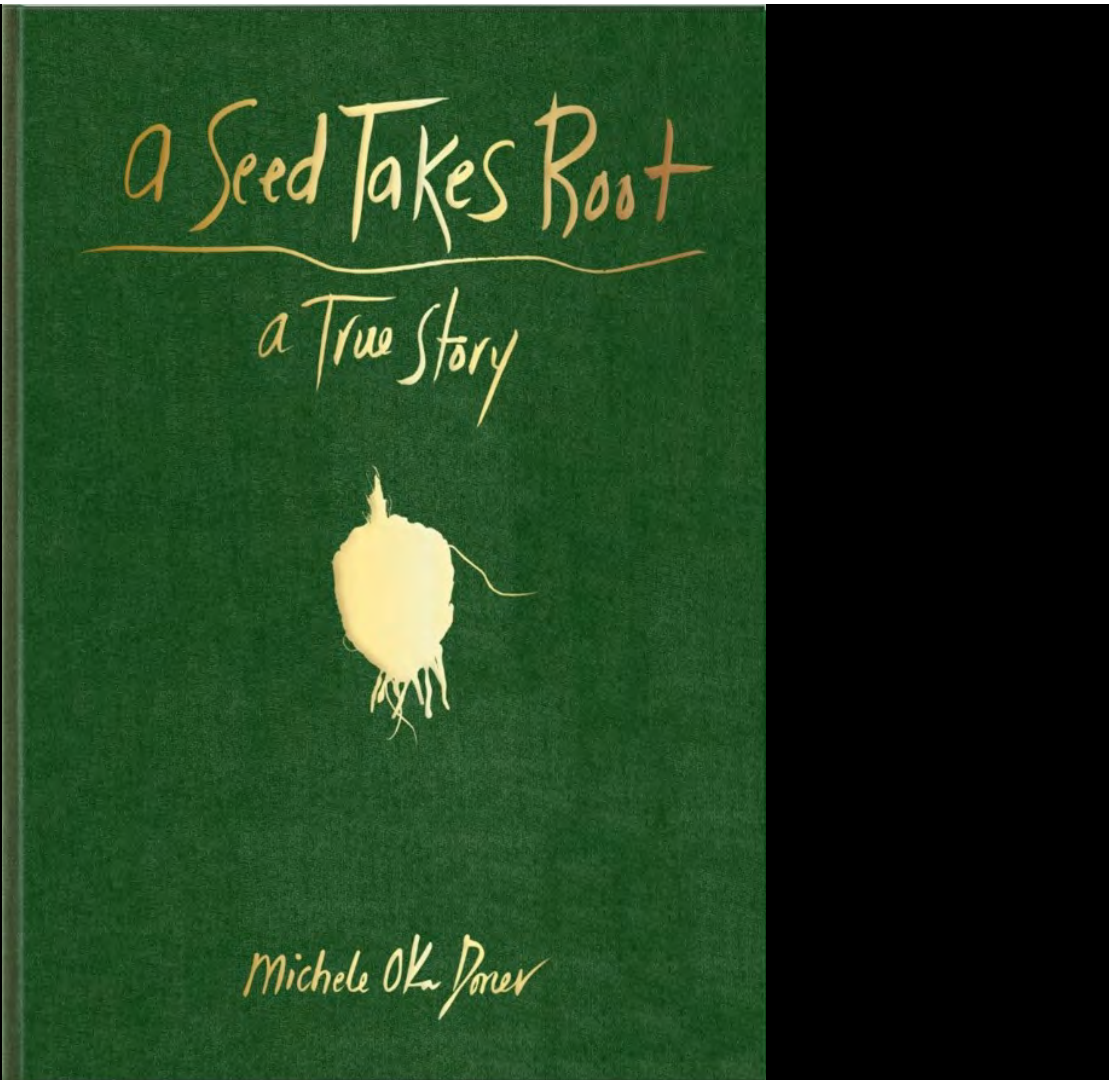
Bird House

A Proposal for
Bayshore Park
Miami Beach, FL

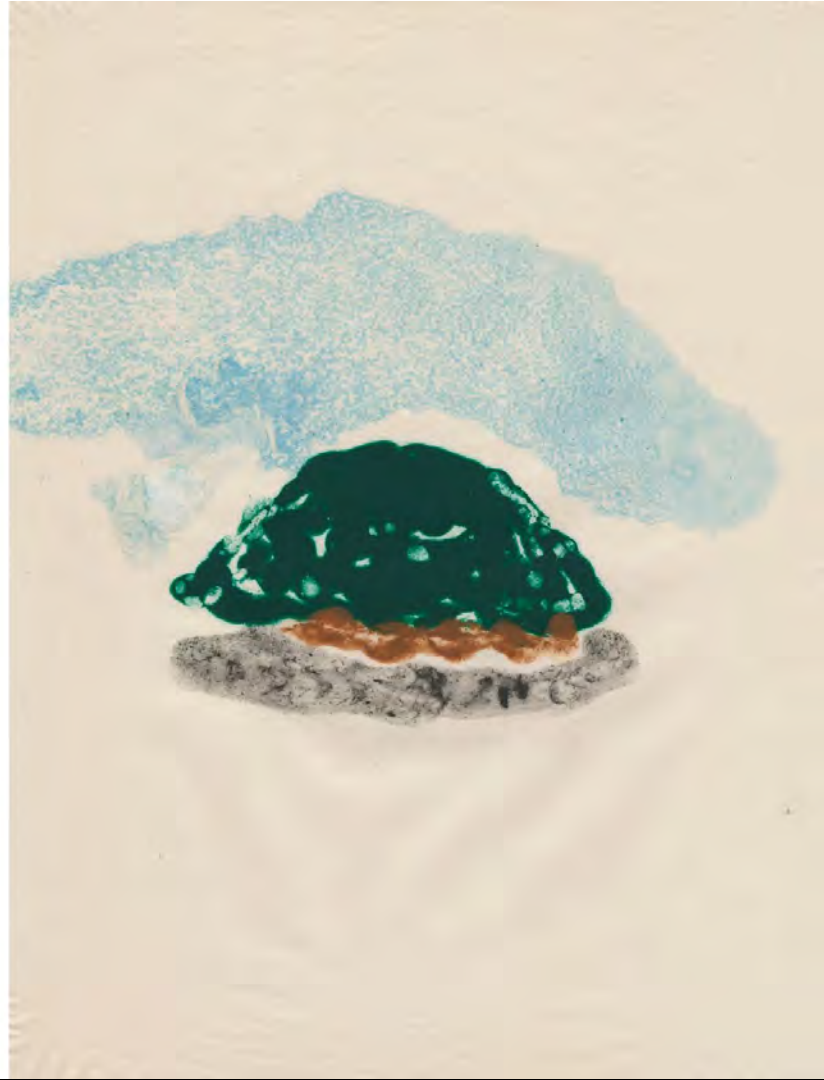
The artist must capture a sense of the epic in the personal

A Seed Takes Root, a children's book commissioned by the City of Miami Beach, is the story of Bayshore Park and how a small seed grew slowly into the monumental banyan tree that will soon celebrate its 100th birthday, one of Miami Beach's oldest resident

Including few pages from this publication that explain my connection to Bayshore Park and how it informs the proposed sculpture



Across the street from the pink house was a small park where the girl liked to play. The park was home to a large Banyan tree that was only a seed when it arrived in Miami Beach. The curious girl learned the seed traveled across the seas from the Island of Java, kept moist in damp blotting paper







My childhood window seen through foliage.
Grandpa Sam Oka planted the Royal Poinciana (seen in the background) in 1952. The Shower of Gold tree (foreground) was planted by my mother, early 1990's

Bayshore Park's abundant foliage on 28th street can be seen on the right. It was wonderful to see the park's greenery across the street merge in the tree canopy with my front yard





In the afternoons when
the girl walked home
From school the birds
screeched, beat their
wings wildly, and chased
her with swooping dives
She covered her head
with her hands and
made a run for the
Front door

A local resident
makes its home
in a native Royal
Palm, a few
blocks
from Bayshore
Park



Another local resident discovers an abandoned birdhouse in a coconut palm not far from the Park, picks it up, shakes it out, and carries it home

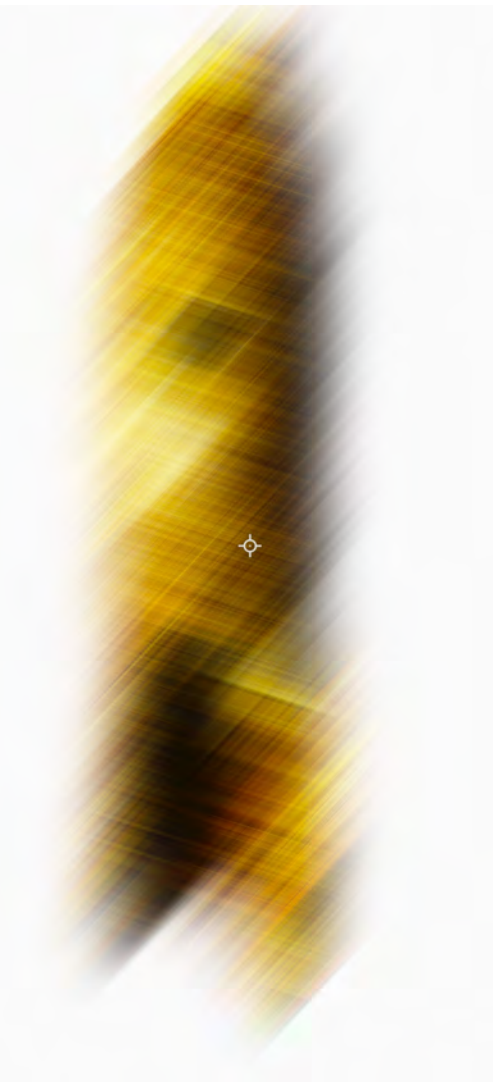


**The bespoke
birdhouse
becomes inspiration
for
for a sculpture**



The shape and form of this birdhouse will be amplified and transformed into a work of art that both harmonizes and celebrates the exceptional natural world that makes the City of Miami Beach so special

Both children and the young at heart can enter *Bird House* and look out of the porthole, becoming “birds in the house”



The process of creating *Bird House* emerges from and engages multiple disciplines: art, architecture, science, digital technology and structural engineering

20 ft. high and 6 ft. diameter, this circular shaped sculpture is ideal for the site: the cylinder is strong, resists wind, has no weak side, an important consideration for sustainability

Bird House, a monumental form derived from nature for Bayshore Park

This totemic icon, *a form both familiar and mysterious*, will be a sculpture that appeals to all ages, and will be seen beyond the boundaries of Bayshore Park

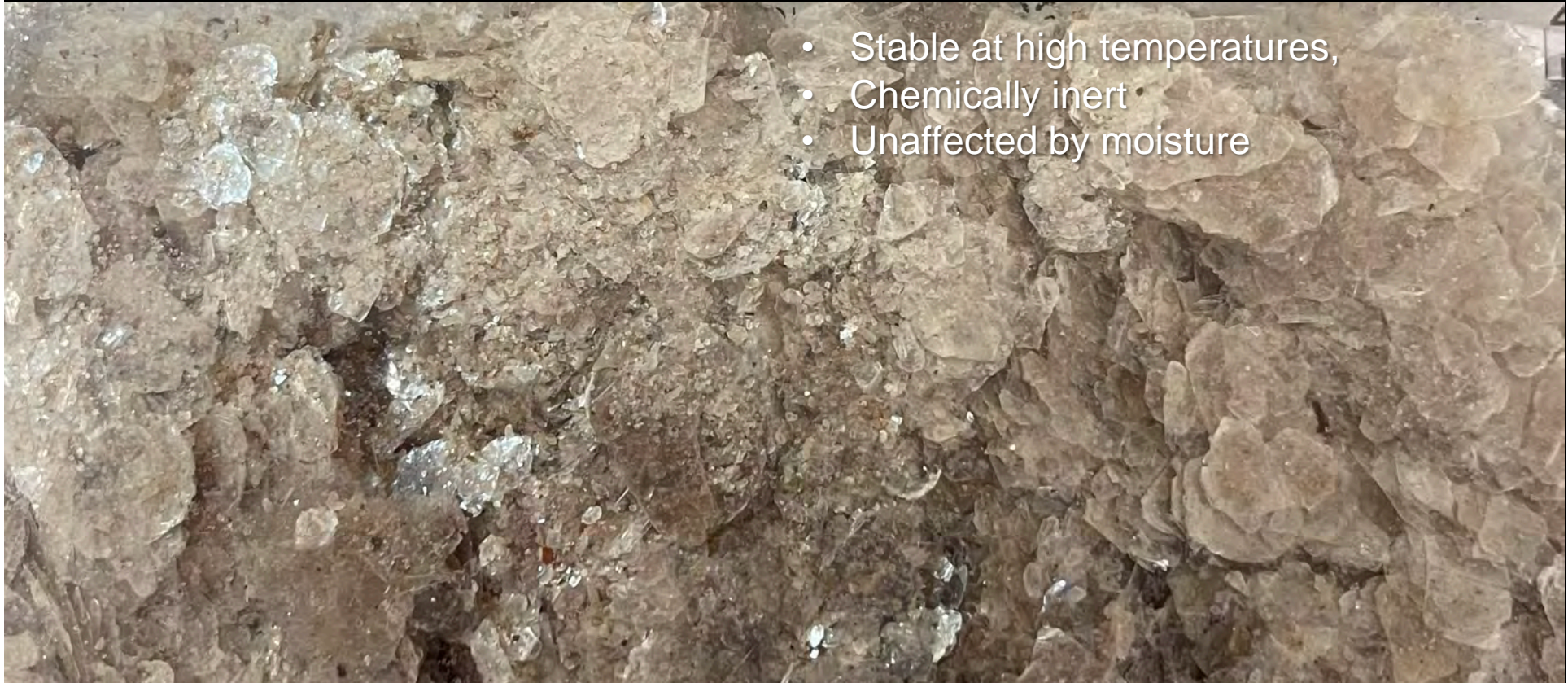
A shining beacon, covered with mica, it will draw curious visitors, and become a destination, a meeting-place for the community, and over time embed itself in the collective memory of Miami Beach.

The resulting sculpture embodies a sense of magic that coexists with the elements intrinsic to the site



**Mica: a strong, versatile material,
a magic that co-exists with the
elements**

Large Mica forms will be embedded at
the top of the sculpture, smaller flakes
will be used closer to the bottom.



- Stable at high temperatures,
- Chemically inert
- Unaffected by moisture

Smaller mica flakes lending their magic to the sculpture



Bird House
A radiant icon
for
Miami Beach
at Bayshore
Park



Michele Oka Doner



Michele Oka Doner is an artist whose work is fueled by a lifelong study and appreciation of the natural world, from which she derives her formal vocabulary. Her artistic production includes sculpture, drawing, public art, functional objects, video, artist books, and costume and set design. She has created numerous permanent art installations throughout the world, including *Radiant Site* at the Herald Square MTA station in New York, *A Walk on the Beach* at Miami International Airport, and *Velocity of Light*, the entrance to the new Astronomy Museum in Shanghai.

Her work is found in the collections of the Metropolitan Museum and Whitney, NY, Art Institute of Chicago, Detroit Institute of Arts, The Louvre, Victoria and Albert, London, and Michigan, Oxford, Yale and Harvard university art museums, among others. She has received many awards, including those given by UN Society of Writers and Artists, Pratt Institute, New York State Council of the Arts and the Knight Foundation. She was first Artist in Residence at the New York Botanical Garden and received an Honorary Doctorate from the University of Michigan, where she earned her undergraduate and MFA degrees. Oka Doner is the author or subject of numerous books, including *Natural Seduction*, *Miami Beach: Blueprint of an Eden*, *Human Nature*, *Everything Is Alive*, and *Into the Mysterium*.

Born in Miami Beach, Michele Oka Doner was recently designated Guardian of the City of Miami Beach's Great Banyan Tree and represents Miami Beach as Ambassador for Arts and Culture. Currently she is working on *Talisman*, in conjunction with the City of New York, on an installation for Park Avenue, opening March, 2026.

The Call for Artists for Bayshore Park offered an opportunity to return to a site filled with memory of childhood. The child who grew up across the street from the park became an artist who has been given many opportunities to transform public spaces, such as the Miami International Airport's 1.5 mile installation *A Walk on the Beach* seen by over 40 million people a year. It give MIA iconic identity. For Bayshore Park Oka Doner proposed *Birdhouse*, a work of art that draws on this deep connection, opens the doors for exploration, pleasure, and play for future generations.