

# MILLER GARDEN STAR ISLAND

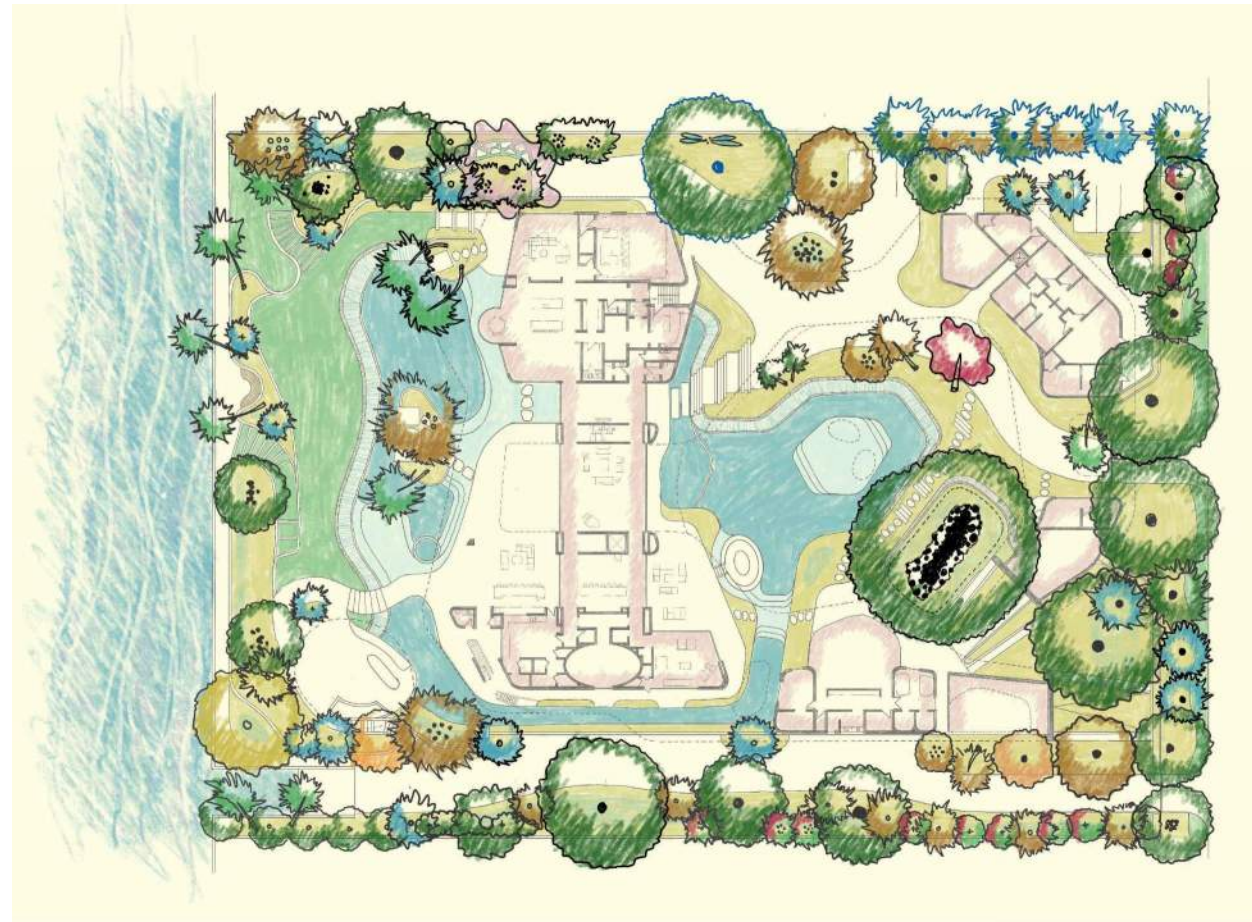
4-5-6 Star Island Drive, Miami Beach, FL 33139

FIRST SUBMITTAL DRB 24-1014  
DATE: 06-20-2025

Prepared by:

**jungles**

Raymond Jungles, Inc.  
Landscape Architect  
2964 Aviation Ave.  
Coconut Grove, FL 33133  
P: 305.858.6777  
www.raymondjungles.com  
Florida License No. LC 000258



| Sheet # | Drawing Index  | DRB Submittal<br>06-20-2025 |
|---------|--|-----------------------------|
| GI.000  | COVER SHEET  | •                           |
| LD.100  | TREE DISPOSITION PLAN                                  | •                           |
| LD.200  | TREE DISPOSITION SCHEDULE                              | •                           |
| LD.201  | EXISTING SPECIMEN TREE IMAGERY                         | •                           |
| LD.202  | EXISTING SPECIMEN TREE IMAGERY                         | •                           |
| LD.300  | TREE DISPOSITION NOTES & DETAILS                       | •                           |
| LH.100  | HARDSCAPE PLAN   | •                           |
| LH.101  | OPEN SPACE DIAGRAM                                     | •                           |
| LH.200  | ELEVATIONS   | •                           |
| LH.201  | ELEVATIONS   | •                           |
| LG.100  | GRADING PLAN   | •                           |
| LG.200  | SECTIONS   | •                           |
| LP.100  | CANOPY PLANTING PLAN                                   | •                           |
| LP.200  | UNDERSTORY PLANTING PLAN                               | •                           |
| LP.300  | PLANTING SCHEDULE / MITIGATION CHART/ LANDSCAPE LEGEND | •                           |
| LP.400  | PLANTING DETAILS                                       | •                           |
| LP.401  | PLANTING NOTES & SPECIFICATIONS                        | •                           |
| LM.100  | LANDSCAPE MOOD BOARD                                   | •                           |
| LM.101  | LANDSCAPE MOOD BOARD                                   | •                           |
| LM.102  | LANDSCAPE MOOD BOARD                                   | •                           |
| LM.103  | LANDSCAPE MOOD BOARD                                   | •                           |
| LM.104  | LANDSCAPE MOOD BOARD                                   | •                           |
| LM.105  | LANDSCAPE MOOD BOARD                                   | •                           |
| LM.106  | LANDSCAPE MOOD BOARD                                   | •                           |
| LM.107  | LANDSCAPE MOOD BOARD                                   | •                           |
| LM.108  | LANDSCAPE MOOD BOARD                                   | •                           |
| LM.109  | LANDSCAPE MOOD BOARD                                   | •                           |
| LM.110  | LANDSCAPE MOOD BOARD                                   | •                           |
| LM.111  | LANDSCAPE MOOD BOARD                                   | •                           |
| LM.112  | LANDSCAPE MOOD BOARD                                   | •                           |
| LL.100  | LANDSCAPE LIGHTING SPECIFICATIONS                      | •                           |





4,5,6 STAR ISLAND MIAMI BEACH, FL 33139

TREE DISPOSITION SCHEDULE  
Existing  
Per Survey Date 03/14/2024

| Iden.        | Symbol              | Scientific Name                | Common Name             | D.B.H. (in) | O.A. Height (ft) | Canopy Diameter (ft) | Condition | Disposition |
|--------------|---------------------|--------------------------------|-------------------------|-------------|------------------|----------------------|-----------|-------------|
| LOT 4        |                     |                                |                         |             |                  |                      |           |             |
| #401         | RRE                 | <i>Roystonea regia</i>         | Royal Palm              | 9           | 21 CT 32 OA      | 17                   | Good      | Remove      |
| #402         | AHE                 | <i>Araucaria heterophylla</i>  | Norfolk Island Pine     | 6           | 24               | 15                   | Good      | Remove      |
| #403         | AHE                 | <i>Araucaria heterophylla</i>  | Norfolk Island Pine     | 7           | 28               | 15                   | Good      | Remove      |
| #404         | PCA                 | <i>Phoenix canariensis</i>     | Canary Island Date Palm | 22          | 18 CT 27 OA      | 18                   | Good      | Relocate    |
| #405         | PCA                 | <i>Phoenix canariensis</i>     | Canary Island Date Palm | 21          | 15 CT 26 OA      | 24                   | Good      | Relocate    |
| #406         | PCA                 | <i>Phoenix canariensis</i>     | Canary Island Date Palm | 23          | 15 CT 24 OA      | 20                   | Good      | Relocate    |
| #407         | Tree does not exist |                                |                         |             |                  |                      |           |             |
| #408         | PCA                 | <i>Phoenix canariensis</i>     | Canary Island Date Palm | 26          | 25 CT 35 OA      | 22                   | Good      | Relocate    |
| #409         | Tree does not exist |                                |                         |             |                  |                      |           |             |
| #410         | PCA                 | <i>Phoenix canariensis</i>     | Canary Island Date Palm | 28          | 26 CT 36 OA      | 22                   | Good      | Remove      |
| #411         | PCA                 | <i>Phoenix canariensis</i>     | Canary Island Date Palm | 28          | 24 CT 34 OA      | 22                   | Good      | Remove      |
| #412         | PCA                 | <i>Phoenix canariensis</i>     | Canary Island Date Palm | 26          | 25 CT 35 OA      | 22                   | Good      | Remove      |
| #413         | BSI                 | <i>Bursera simaruba</i>        | Gumbo Limbo             | 19          | 28               | 25                   | Good      | Relocate    |
| #414         | PRO                 | <i>Phoenix roebelinii</i>      | Senegal Date Palm       | 10          | 8 CT 17 OA       | 16                   | Good      | Remove      |
| #415         | PCA                 | <i>Phoenix canariensis</i>     | Canary Island Date Palm | 27          | 25 CT 30 OA      | 25                   | Good      | Relocate    |
| #416         | PLU                 | <i>Plumeria spp</i>            | Frangipani              | 12          | 14               | 10                   | Good      | Relocate    |
| #417         | LCH                 | <i>Livistona chinensis</i>     | Chinese Fan Palm        | 8           | 20 CT 27 OA      | 11                   | Good      | Remove      |
| #418         | BNO                 | <i>Bismarckia nobilis</i>      | Bismarck Palm           | 12          | 25 CT 33 OA      | 18                   | Good      | Relocate    |
| #419         | LCH                 | <i>Livistona chinensis</i>     | Chinese Fan Palm        | 7           | 5 CT 11 OA       | 8                    | Good      | Remove      |
| #420         | LCH                 | <i>Livistona chinensis</i>     | Chinese Fan Palm        | 10          | 20 CT 27 OA      | 12                   | Good      | Remove      |
| #421         | Tree does not exist |                                |                         |             |                  |                      |           |             |
| #422         | CRO                 | <i>Clusia rosea</i>            | Pitch Apple             | 20          | 35               | 35                   | Good      | Relocate    |
| #423         | LLO                 | <i>Latania sp.</i>             | Latan Palm              | 8           | 14 CT 21 OA      | 10                   | Good      | Relocate    |
| #424         | PEL                 | <i>Ptychosperma elegans</i>    | Solitaire Palm          | 3           | 18 CT 14 OA      | 11                   | Good      | Remove      |
| #425         | PEL                 | <i>Ptychosperma elegans</i>    | Solitaire Palm          | 4           | 25 CT 33 OA      | 11                   | Good      | Remove      |
| #426         | PRE                 | <i>Phoenix reclinata</i>       | Senegal Date Palm Clump | 14          | 12 CT 20 OA      | 16                   | Good      | Remove      |
| #427         | Tree does not exist |                                |                         |             |                  |                      |           |             |
| #428         | LCH                 | <i>Livistona chinensis</i>     | Chinese Fan Palm double | 17          | 24 CT 30 OA      | 15                   | Good      | Remove      |
| #429         | Tree does not exist |                                |                         |             |                  |                      |           |             |
| #430         | LCH                 | <i>Livistona chinensis</i>     | Chinese Fan Palm        | 8           | 8 CT 17 OA       | 15                   | Good      | Remove      |
| #431         | LLO                 | <i>Latania sp.</i>             | Latan Palm              | 7           | 12 CT 20 OA      | 14                   | Good      | Relocate    |
| #432         | LCH                 | <i>Livistona chinensis</i>     | Chinese Fan Palm triple | 14          | 23 CT 28 OA      | 18                   | Good      | Remove      |
| #433         | LCH                 | <i>Livistona chinensis</i>     | Chinese Fan Palm        | 9           | 23 CT 28 OA      | 15                   | Good      | Remove      |
| #434         | FBE                 | <i>Ficus benjamina</i>         | Weeping Fig             | 35          | 40               | 45                   | Good      | Remove      |
| #435         | AHE                 | <i>Araucaria heterophylla</i>  | Norfolk Island Pine     | 4           | 33               | 10                   | Good      | Remove      |
| #436         | PCA                 | <i>Phoenix canariensis</i>     | Canary Island Date Palm | 22          | 27 CT 34 OA      | 19                   | Good      | Relocate    |
| #437         | PCA                 | <i>Phoenix canariensis</i>     | Canary Island Date Palm | 24          | 26 CT 35 OA      | 18                   | Good      | Relocate    |
| #439         | EGR                 | <i>Euphorbia gratus</i>        | Same                    | N/A         | 5                | 5                    | Good      | Relocate    |
| #440         | FBE                 | <i>Ficus benjamina</i>         | Weeping Fig             | N/A         | 15               | N/A                  | Good      | Remove      |
| #61009       | QVI                 | <i>Quercus virginiana</i>      | Live Oak                | 34          | 46               | 80                   | Good      | Relocate    |
| #61010       | PLL                 | <i>Pseudobombax ellipticum</i> | Shaving Brush Tree      | 22          | 35               | 43                   | Good      | Relocate    |
| #61011       | QVI                 | <i>Quercus virginiana</i>      | Live Oak                | 24          | 28               | 48                   | Good      | Relocate    |
| #61012       | Tree does not exist |                                |                         |             |                  |                      |           |             |
| #61013       | Tree does not exist |                                |                         |             |                  |                      |           |             |
| #61014       | Tree does not exist |                                |                         |             |                  |                      |           |             |
| #61016       | QVI                 | <i>Quercus virginiana</i>      | Live Oak                | 50          | 38               | 55                   | Good      | Relocate    |
| #61017       | QVI                 | <i>Quercus virginiana</i>      | Live Oak                | 34          | 38               | 62                   | Good      | Relocate    |
| #61018       | CUV                 | <i>Coccoloba uvifera</i>       | Seagrape                | 60          | 32               | 48                   | Good      | Relocate    |
| #61032       | BSI                 | <i>Bursera simaruba</i>        | Gumbo Limbo             | 42          | 30               | 40                   | Good      | Relocate    |
| #61033-61036 | PSS                 | <i>Phoenix spp.</i>            | Date Palm Clump         | 8 x 4       | 14               | 10                   | Good      | Relocate    |
| #61037-61039 | PSS                 | <i>Phoenix spp.</i>            | Date Palm Clump         | 8 x 3       | 30               | 8                    | Good      | Relocate    |
| #61040       | FPI                 | <i>Pongamia pinnata</i>        | Pongamia Tree           | 36          | 32               | 56                   | Good      | Relocate    |
| #61041       | PEL                 | <i>Ptychosperma elegans</i>    | Solitaire Palm          | 3           | 18 CT 14 OA      | 11                   | Good      | Remove      |
| #61042       | PEL                 | <i>Ptychosperma elegans</i>    | Solitaire Palm          | 3           | 18 CT 14 OA      | 11                   | Good      | Remove      |
| #61043       | PSS                 | <i>Phoenix spp.</i>            | Date Palm               | 8           | 16               | 8                    | Good      | Relocate    |
| #61044       | SMA                 | <i>Swietenia mahagoni</i>      | Mahogany                | 24          | 35               | 25                   | Good      | Relocate    |
| #61045-61046 | QVI                 | <i>Quercus virginiana</i>      | Live Oak                | 8.5-3       | 20               | 18                   | Good      | Relocate    |
| #61047       | ADI                 | <i>Adansonia digitata</i>      | Baobab                  | 40          | 20               | 6                    | Good      | Relocate    |
| #61048       | LLO                 | <i>Latania sp.</i>             | Latan Palm              | 36          | 18               | 8                    | Good      | Relocate    |
| #61049       | CGU                 | <i>Clusia guttata</i>          | Small Leaf Clusia       | 48          | 26               | 18                   | Good      | Relocate    |

4,5,6 STAR ISLAND MIAMI BEACH, FL 33139

TREE DISPOSITION SCHEDULE  
Existing  
Per Survey Date 03/14/2024

| Iden.        | Symbol              | Scientific Name                      | Common Name             | D.B.H. (in) | O.A. Height (ft) | Canopy Diameter (ft) | Condition | Disposition |
|--------------|---------------------|--------------------------------------|-------------------------|-------------|------------------|----------------------|-----------|-------------|
| LOT 5        |                     |                                      |                         |             |                  |                      |           |             |
| #501         | LLO                 | <i>Latania sp.</i>                   | Latan Palm              | 8           | 10 CT 18 OA      | 12                   | Good      | Relocate    |
| #502         | LCH                 | <i>Livistona chinensis</i>           | Chinese Fan Palm        | 7           | 15 CT 20 OA      | 10                   | Good      | Remove      |
| #503         | PCA                 | <i>Phoenix canariensis</i>           | Canary Island Date Palm | 24          | 25 CT 36 OA      | 22                   | Good      | Remove      |
| #504         | RRE                 | <i>Roystonea regia</i>               | Royal Palm              | 9           | 26 CT 30 OA      | 14                   | Good      | Remove      |
| #505         | RRE                 | <i>Roystonea regia</i>               | Royal Palm              | 9           | 28 CT 36 OA      | 17                   | Good      | Remove      |
| #506         | CRO                 | <i>Ousia rosea</i>                   | Pitch Apple             | 17          | 35               | 25                   | Good      | Relocate    |
| #507         | RRE                 | <i>Roystonea regia</i>               | Royal Palm              | 9           | 28 CT 36 OA      | 17                   | Good      | Remove      |
| #508         | QVI                 | <i>Quercus virginiana</i>            | Live Oak                | 13          | 24               | 30                   | Good      | Relocate    |
| #509         | LCH                 | <i>Livistona chinensis</i>           | Chinese Fan Palm        | 7           | 17 CT 26 OA      | 12                   | Good      | Remove      |
| #510         | VAR                 | <i>Veitchia arecina</i>              | Montgomery Palm         | 3           | 18 CT 27 OA      | 11                   | Good      | Remove      |
| #511         | LCH                 | <i>Livistona chinensis</i>           | Chinese Fan Palm double | 6           | 8 CT 16 OA       | 10                   | Good      | Remove      |
| #512         | LCH                 | <i>Livistona chinensis</i>           | Chinese Fan Palm double | 14          | 23 CT 28 OA      | 14                   | Good      | Remove      |
| #513         | VAR                 | <i>Veitchia arecina</i>              | Montgomery Palm         | 3           | 11 CT 18 OA      | 8                    | Good      | Remove      |
| #514         | LLO                 | <i>Latania sp.</i>                   | Latan Palm              | 8           | 16 CT 24 OA      | 10                   | Good      | Relocate    |
| #515         | PCA                 | <i>Phoenix canariensis</i>           | Canary Island Date Palm | 12          | 23 CT 32 OA      | 14                   | Good      | Remove      |
| #516         | PRE                 | <i>Phoenix reclinata</i>             | Senegal Date Palm       | 90          | 30 CT 38 OA      | 30                   | Good      | Relocate    |
| #517         | LCH                 | <i>Livistona chinensis</i>           | Chinese Fan Palm double | 12          | 18 CT 24 OA      | 14                   | Good      | Remove      |
| #518         | LCH                 | <i>Livistona chinensis</i>           | Chinese Fan Palm double | 14          | 19 CT 26 OA      | 14                   | Good      | Remove      |
| #519         | LCH                 | <i>Livistona chinensis</i>           | Chinese Fan Palm        | 8           | 19 CT 26 OA      | 12                   | Good      | Remove      |
| #520         | PCA                 | <i>Phoenix canariensis</i>           | Canary Island Date Palm | 21          | 30 CT 40 OA      | 24                   | Good      | Remove      |
| #521         | CRO                 | <i>Ousia rosea</i>                   | Pitch Apple             | 6           | 26               | 20                   | Good      | Relocate    |
| #522         | PEL                 | <i>Ptychosperma elegans</i>          | Solitaire Palm          | 3           | 18 CT 26 OA      | 11                   | Good      | Remove      |
| #523         | PEL                 | <i>Ptychosperma elegans</i>          | Solitaire Palm          | 3           | 24 CT 32 OA      | 13                   | Good      | Remove      |
| #524         | PCA                 | <i>Phoenix canariensis</i>           | Canary Island Date Palm | 22          | 24 CT 35 OA      | 26                   | Good      | Remove      |
| #525         | Tree does not exist |                                      |                         |             |                  |                      |           |             |
| #526         | Tree does not exist |                                      |                         |             |                  |                      |           |             |
| #527         | PCA                 | <i>Phoenix canariensis</i>           | Canary Island Date Palm | 26          | 22 CT 30 OA      | 24                   | Good      | Remove      |
| #528         | PCA                 | <i>Phoenix canariensis</i>           | Canary Island Date Palm | 22          | 22 CT 30 OA      | 24                   | Good      | Remove      |
| #529         | PCA                 | <i>Phoenix canariensis</i>           | Canary Island Date Palm | 27          | 25 CT 34 OA      | 18                   | Good      | Remove      |
| #530         | FBE                 | <i>Ficus benghalensis</i>            | Banyan                  | 200         | 50               | 72                   | Good      | Relocate    |
| #531         | Tree does not exist |                                      |                         |             |                  |                      |           |             |
| #532         | Tree does not exist |                                      |                         |             |                  |                      |           |             |
| #533         | Tree does not exist |                                      |                         |             |                  |                      |           |             |
| #534         | Tree does not exist |                                      |                         |             |                  |                      |           |             |
| #535         | Tree does not exist |                                      |                         |             |                  |                      |           |             |
| #536         | RRE                 | <i>Roystonea regia</i>               | Royal Palm              | 20          | 52 CT 62 OA      | 18                   | Good      | Relocate    |
| #537         | RRE                 | <i>Roystonea regia</i>               | Royal Palm              | 18          | 28 CT 38 OA      | 20                   | Good      | Relocate    |
| #538         | RRE                 | <i>Roystonea regia</i>               | Royal Palm              | 18          | 33 CT 40 OA      | 24                   | Good      | Relocate    |
| #539         | Tree does not exist |                                      |                         |             |                  |                      |           |             |
| #540         | Tree does not exist |                                      |                         |             |                  |                      |           |             |
| #541         | Tree does not exist |                                      |                         |             |                  |                      |           |             |
| #542         | PDA                 | <i>Phoenix dactylifera 'Medjool'</i> | Medjool Date Palm       | 18          | 40 CT 53 OA      | 26                   | Good      | Relocate    |
| #543         | PDA                 | <i>Phoenix dactylifera 'Medjool'</i> | Medjool Date Palm       | 14          | 37 CT 43 OA      | 18                   | Good      | Relocate    |
| #544         | PDA                 | <i>Phoenix dactylifera 'Medjool'</i> | Medjool Date Palm       | 20          | 33 CT 43 OA      | 25                   | Good      | Relocate    |
| #545         | PDA                 | <i>Phoenix dactylifera 'Medjool'</i> | Medjool Date Palm       | 16          | 38 CT 47 OA      | 24                   | Good      | Relocate    |
| #546         | PDA                 | <i>Phoenix dactylifera 'Medjool'</i> | Medjool Date Palm       | 18          | 39 CT 43 OA      | 18                   | Good      | Relocate    |
| #547         | PDA                 | <i>Phoenix dactylifera 'Medjool'</i> | Medjool Date Palm       | 13          | 37 CT 46 OA      | 23                   | Good      | Relocate    |
| #548         | PDA                 | <i>Phoenix dactylifera 'Medjool'</i> | Medjool Date Palm       | 14          | 23 CT 33 OA      | 25                   | Good      | Relocate    |
| #549         | PDA                 | <i>Phoenix dactylifera 'Medjool'</i> | Medjool Date Palm       | 14          | 28 CT 35 OA      | 25                   | Good      | Relocate    |
| #61000       | KAF                 | <i>Kigelia africana</i>              | Sausage Tree            | 36          | 43               | 38                   | Good      | Relocate    |
| #61019-61026 | PSP                 | <i>Phoenix spp.</i>                  | Date Palm clump         | 8 x 10      | 22 CT 30 OA      | 20                   | Good      | Relocate    |
| #61029       | PSP                 | <i>Phoenix spp.</i>                  | Date Palm clump         | 10 x 4      | 24 CT 30 OA      | 22                   | Good      | Relocate    |
| #61031       | Tree does not exist |                                      |                         |             |                  |                      |           |             |
| #61050       | RRE                 | <i>Roystonea regia</i>               | Royal Palm              | 9           | 26 CT 30 OA      | 14                   | Good      | Relocate    |
| #61051       | QVI                 | <i>Quercus virginiana</i>            | Live Oak                | 24          | 40               | 40                   | Good      | Relocate    |
| #61052       | QVI                 | <i>Quercus virginiana</i>            | Live Oak                | 35          | 38               | 38                   | Good      | Relocate    |

TREE REPLACEMENT CHART

| Total diameter of tree(s) to be removed (sum of inches at DBH) | Total number of replacement trees required (where each replacement tree is a minimum of 2" DBH x 6' spread in canopy x 12' in height) | OR | Total number of replacement trees required (where each replacement tree is a minimum of 4" DBH x 8' spread in canopy x 16' in height) | OR | Contribution to Tree Trust Fund |
|--|---|----|---|----|---------------------------------|
| 2"-3"  | 1   | or | 0   | or | \$1,000.00                      |
| 4"-6"  | 2   | or | 1   | or | \$2,000.00                      |
| 7"-12"   | 4   | or | 2   | or | \$4,000.00                      |
| 13"-18"  | 6   | or | 3   | or | \$6,000.00                      |
| 19"-24"  | 8   | or | 4   | or | \$8,000.00                      |
| 25"-30"  | 10  | or | 5   | or | \$10,000.00                     |
| 31"-36"  | 12  | or | 6   | or | \$12,000.00                     |
| 37"-42"  | 14  | or | 7   | or | \$14,000.00                     |
| 43"-48"  | 16  | or | 8   | or | \$16,000.00                     |
| 49"-60"  | 20  | or | 10  | or | \$20,000.00                     |

- If the sum of the diameter of trees to be removed exceeds a total of 60 inches, the additional inches shall be added cumulatively from the top of the chart, down to the bottom of the chart, to calculate the number of trees required as replacement trees.
- Up to 30 percent of the two-inch DBH replacement tree requirement may be met by planting native species within private property, with a minimum height of ten feet and a minimum DBH of one and one-half inches at time of planting.
- The removal of a palm shall be replaced with one canopy tree at 12 feet overall height with a two-inch DBH.

4,5,6 STAR ISLAND MIAMI BEACH, FL 33139

TREE DISPOSITION SCHEDULE  
Existing  
Per Survey Date 03/14/2024

| Iden. | Symbol | Scientific Name                  | Common Name        | D.B.H. (in) | O.A. Height (ft) | Canopy Diameter (ft) | Condition | Disposition |
|-------|--------|----------------------------------|--------------------|-------------|------------------|----------------------|-----------|-------------|
| LOT 6 |        |                                  |                    |             |                  |                      |           |             |
| #601  | MFR    | <i>Myrsine fragrans</i>          | Simpson's Stopper  | 15          | 14               | 12                   | Good      | Relocate    |
| #602  | ALA    | <i>Amphitecna latifolia</i>      | Black Calabash     | 8           | 20               | 18                   | Good      | Relocate    |
| #603  | ALA    | <i>Amphitecna latifolia</i>      | Black Calabash     | 5           | 17               | 10                   | Good      | Relocate    |
| #604  | SLI    | <i>Satakentia liliuensis</i>     | Satakentia Palm    | 11          | 17 CT 26 OA      | 18                   | Good      | Relocate    |
| #605  | HEL    | <i>Heterospatha elata</i>        | Sagisi Palm Double | 14          | 23 CT 32 OA      | 18                   | Good      | Relocate    |
| #606  | CMA    | <i>Chambeyronia macrocarpa</i>   | Red Feather Palm   | 14          | 14 CT 24 OA      | 18                   | Good      | Relocate    |
| #607  | RRE    | <i>Roystonea regia</i>           | Royal Palm         | 19          | 37 CT 45 OA      | 22                   | Good      | Relocate    |
| #608  | CWI    | <i>Canella winterana</i>         | Wild Cinnamon Bark | 3           | 14               | 8                    | Good      | Relocate    |
| #609  | CWI    | <i>Canella winterana</i>         | Wild Cinnamon Bark | 4           | 10               | 7                    | Good      | Relocate    |
| #610  | CDI    | <i>Coccoloba diversifolia</i>    | Pigeon Plum        | 40          | 35               | 35                   | Good      | Relocate    |
| #611  | RRE    | <i>Roystonea regia</i>           | Royal Palm         | 20          | 43 CT 52 OA      | 20                   | Good      | Relocate    |
| #612  | CRO    | <i>Ousia rosea</i>               | Pitch Apple        | 40          | 40               | 35                   | Good      | Relocate    |
| #613  | CMA    | <i>Chambeyronia macrocarpa</i>   | Red Feather Palm   | 8           | 18 CT 25 OA      | 14                   | Good      | Relocate    |
| #614  | RRE    | <i>Roystonea regia</i>           | Royal Palm         | 16          | 34 CT 40A        | 22                   | Good      | Relocate    |
| #615  | SLI    | <i>Satakentia liliuensis</i>     | Satakentia Palm    | 11          | 17 CT 26 OA      | 20                   | Good      | Relocate    |
| #616  | MFR    | <i>Myrsine fragrans</i>          | Simpson's Stopper  | 16          | 11               | 12                   | Good      | Relocate    |
| #617  | RRE    | <i>Roystonea regia</i>           | Royal Palm         | 20          | 43 CT 52 OA      | 20                   | Good      | Relocate    |
| #618  | SLI    | <i>Satakentia liliuensis</i>     | Satakentia Palm    | 11          | 17 CT 26 OA      | 20                   | Good      | Relocate    |
| #619  | SLI    | <i>Satakentia liliuensis</i>     | Satakentia Palm    | 11          | 19 CT 33 OA      | 20                   | Good      | Relocate    |
| #620  | HEL    | <i>Heterospatha elata</i>        | Sagisi Palm Double | 22          | 22 CT 30 OA      | 20                   | Good      | Relocate    |
| #621  | RMA    | <i>Ravenala madagascariensis</i> | Travelers Palm     | 95          | 30 OA            | 25                   | Good      | Relocate    |
| #622  | RMA    | <i>Ravenala madagascariensis</i> | Travelers Palm     | 130         | 34 OA            | 25                   | Good      | Relocate    |
| #623  | RMA    | <i>Ravenala madagascariensis</i> | Travelers Palm     | 140         | 34               | 25                   | Good      | Relocate    |
| #624  | RMA    | <i>Ravenala madagascariensis</i> | Travelers Palm     | 140         | 35               | 35                   | Good      | Relocate    |
| #625  | RMA    | <i>Ravenala madagascariensis</i> | Travelers Palm     | 70          | 35               | 25                   | Good      | Relocate    |
| #626  | SLI    | <i>Satakentia liliuensis</i>     | Satakentia Palm    | 11          | 19 CT 28 OA      | 24                   | Good      | Relocate    |
| #627  | SLI    | <i>Satakentia liliuensis</i>     | Satakentia Palm    | 11          | 19 CT 28 OA      | 24                   | Good      | Relocate    |
| #628  | CRO    | <i>Ousia rosea</i>               | Pitch Apple        | 30          | 28               | 24                   | Good      | Remain      |
| #629  | CMA    | <i>Chambeyronia macrocarpa</i>   | Red Feather Palm   | 9           | 10 CT 16 OA      | 11                   | Good      | Remain      |
| #630  | SMA    | <i>Swietenia mahagoni</i>        | Mahogany           | 72          | 55               | 70                   | Good      | Relocate    |
| #631  | BAR    | <i>Bulnesia arborea</i>          | Verawood           | 12          | 27               | 22                   | Good      | Relocate    |
| #632  | ALA    | <i>Amphitecna latifolia</i>      | Black Calabash     | 8           | 16               | 12                   | Good      | Relocate    |





3. ROOT PRUNING SPECIFICATIONS

- 1.1. CONTRACTOR MUST BE A LICENSED LANDSCAPE CONTRACTOR.
1.2. CONTRACTOR MUST HAVE A MINIMUM OF 10 YEARS OF PROVEN EXPERIENCE RELOCATING LARGE SPECIMEN TREES AND PALMS IN SOUTH FLORIDA.
1.3. CONTRACTOR MUST HAVE PROVEN EXPERIENCE RELOCATING TREES AND PALMS OF THE SAME SPECIES AND SIZE AS THOSE TO BE RELOCATED FOR THE CURRENT PROJECT.
1.4. CONTRACTOR MUST HAVE A CERTIFIED ARBORIST ON STAFF.
2. CONTRACTOR REQUIREMENTS
2.1. CONTRACTOR MUST VISIT THE JOBSITE AND INSPECT ALL TREES AND PALMS TO BE RELOCATED AS WELL AS EXISTING SITE CONDITIONS AND RESTRICTIONS PRIOR TO PREPARING BID.
2.2. CONTRACTOR MUST VERIFY AND ENSURE THAT ALL TREES AND PALMS IDENTIFIED ON THE PLANS AND THOSE TAGGED ON THE JOBSITE CORRESPOND AS TO NUMBER AND DESCRIPTION. ANY DISCREPANCIES MUST BE BROUGHT TO THE ATTENTION OF THE LANDSCAPE ARCHITECT IMMEDIATELY, PRIOR TO PREPARING BID.
2.3. CONTRACTOR MUST CONDUCT ALL WORK ASSOCIATED WITH RELOCATION AND MAINTENANCE OF TREES AND PALMS TO BE RELOCATED. NO WORK IS TO BE SUBCONTRACTED WITHOUT PRIOR WRITTEN CONSENT OF THE OWNER AND THE LANDSCAPE ARCHITECT.
2.4. CONTRACTOR MUST DESIGNATE A COMPETENT, ENGLISH-SPEAKING SUPERVISOR OR FOREMAN TO OVERSEE AND DIRECT ALL RELOCATION AND MAINTENANCE ACTIVITIES AS OUTLINED IN THESE SPECIFICATIONS.
2.5. CONTRACTOR MUST SCHEDULE ROOT PRUNING TO PROVIDE THE MAXIMUM POSSIBLE TIME FOR NEW ROOT GROWTH. EVEN TREES AND PALMS THAT TYPICALLY DO NOT REQUIRE LONG (OR ANY) ROOT PRUNING WILL BENEFIT FROM MORE ROOT PRUNING TIME; THEREFORE, ALL TREES AND PALMS TO BE RELOCATED MUST BE ROOT PRUNED. CONTRACTOR MUST PROVIDE A ROOT PRUNE SCHEDULE FOR EACH TREE OR PALM TO BE RELOCATED AS AN ATTACHMENT TO THE BID.
2.6. CONTRACTOR MUST CALL SUNSHINE 811 TO HAVE ALL UNDERGROUND UTILITIES LOCATED UNDER OR IN THE VICINITY OF THE CURRENT OR FUTURE LOCATIONS OF ALL TREES AND PALMS TO BE RELOCATED PRIOR TO WORK COMMENCING.
2.7. CONTRACTOR MUST VERIFY WITH THE GENERAL CONTRACTOR THE ABSENCE OF ANY UNDERGROUND CONSTRUCTION OR OBSTRUCTIONS (E.G., BULKHEADS, MECHANICAL SYSTEMS, ETC.) IN THE CURRENT AND FUTURE LOCATIONS OF ALL TREES AND PALMS TO BE RELOCATED.
2.8. CONTRACTOR MUST ALERT THE LANDSCAPE ARCHITECT OF ANY TREES OR PALMS THAT WILL NOT SUCCESSFULLY RELOCATE DUE TO POOR HEALTH PRIOR TO BEGINNING ROOT PRUNING.
2.9. CONTRACTOR MUST FLAG ALL PROPOSED TRANSPLANT LOCATIONS FOR THE LANDSCAPE ARCHITECT'S APPROVAL A MINIMUM OF 15 DAYS PRIOR TO RELOCATION.
2.10. CONTRACTOR MUST ENSURE THAT ALL TREES AND PALMS TO BE RELOCATED ARE INSTALLED AT THE CORRECT GRADE OR ELEVATION, ACCORDING TO THE GRADING PLAN.
2.11. CONTRACTOR MUST ENSURE THAT ALL ROOT FLARES ARE EXPOSED AFTER RELOCATION.
2.12. CONTRACTOR MUST REMOVE ALL RESIDUAL ROOTS, STUMPS, AND PORTIONS THEREOF AND BACKFILL PITS FROM WHICH RELOCATED TREES AND PALMS WERE REMOVED WITH CLEAN FILL FLUSH WITH THE SURROUNDING GRADE.
2.13. CONTRACTOR MUST REPAIR ANY DAMAGE TO OTHER PLANTS, LAWN, HARDSCAPES, OR NEW CONSTRUCTION WITHIN THE RELOCATION AREAS AT CONTRACTOR'S EXPENSE. HARDSCAPES INCLUDE BUT ARE NOT LIMITED TO CURBS, WALKS, ROADS, FENCES, SITE FURNISHINGS, ETC.
2.14. CONTRACTOR MUST PHOTOGRAPHICALLY DOCUMENT NEW ROOT GROWTH FOLLOWING EACH ROOT PRUNE AND SUBMIT THIS DOCUMENTATION TO THE LANDSCAPE ARCHITECT. THE PURPOSE OF THIS REQUIREMENT IS TO ENSURE THAT SUFFICIENT ROOT GROWTH HAS OCCURRED PRIOR TO THE SECOND AND SUBSEQUENT ROOT PRUNES AND FOLLOWING THE FINAL ROOT PRUNE PRIOR TO RELOCATION.
2.15. CONTRACTOR MUST INSTALL AND MAINTAIN PROTECTION FENCING AROUND EACH TREE AND PALM TO BE RELOCATED BOTH DURING ROOT PRUNING AND AFTER RELOCATION. PROTECTION FENCING MUST CONSIST OF GALVANIZED WELDED WIRE FABRIC OR PLASTIC MESH ATTACHED TO 4" X 4" POSTS INSERTED AROUND THE PERIMETER OF THE DRIPLINE OF THE TREE OR PALM. PROTECTION FENCING MUST BE PLUMB, TAUT, AND STURDY AT ALL TIMES AND MUST REMAIN IN PLACE THROUGHOUT THE ROOT PRUNING AND WARRANTY PERIODS, OR AS DIRECTED BY THE LANDSCAPE ARCHITECT.
2.16. CONTRACTOR MUST OBTAIN ALL NECESSARY AND/OR REQUIRED PERMITS FOR THE RELOCATION AND TRANSPORTATION OF THE TREES AND PALMS TO BE RELOCATED.
2.17. CONTRACTOR MUST REPLACE ANY TREES OR PALMS SCARRED OR DAMAGED DURING RELOCATION, AT THE CONTRACTOR'S EXPENSE, WITH THE SAME OR SIMILAR SPECIES, SIZE, AND QUALITY. REPLACEMENT TREES OR PALMS MUST BE APPROVED BY THE LANDSCAPE ARCHITECT PRIOR TO PROCUREMENT, PREPARATION, AND/OR INSTALLATION. REPLACEMENT TREES AND PALMS MUST BE INSTALLED WITHIN 60 DAYS OF NOTICE.
2.18. CONTRACTOR MUST GUARANTEE ALL RELOCATED TREES AND PALMS FOR ONE YEAR FROM THE DATE OF RELOCATION TO THE FINAL LOCATION. GUARANTEE MUST INCLUDE TREE HEALTH AND SETTLING.
2.19. CONTRACTOR MUST PROVIDE ALL MATERIAL NECESSARY TO PERFORM THE WORK COVERED HEREIN, INCLUDING BUT NOT LIMITED TO BACKFILL MATERIAL, PROTECTION FENCING, FLAGGING, ADDITIVES AND SUPPLEMENTS, TEMPORARY IRRIGATION, BURLAP, WIRE, SHRINK WRAP, AND ALL NECESSARY TOOLS AND EQUIPMENT.

- 3.1. GENERAL
3.1.1. ALL TREES AND PALMS TO BE RELOCATED MUST BE WATERED DAILY FOR AT LEAST 2-3 DAYS PRIOR TO ANY ROOTS BEING CUT TO ENSURE THAT THEY ARE FULLY HYDRATED. EACH WATERING MUST THOROUGHLY SATURATE THE ROOTBALL TO ITS FULL DEPTH.
3.1.2. EACH TREE AND PALM MUST THEN BE WATERED EVERY OTHER DAY, NOT RELYING ON RAIN, DURING THE ENTIRE ROOT PRUNING PROCESS EITHER BY A TEMPORARY IRRIGATION SYSTEM OR BY HAND. EACH WATERING MUST THOROUGHLY SATURATE THE ROOTBALL TO ITS FULL DEPTH.
3.1.3. TREE AND PALM RELOCATION ACTIVITIES MUST BE SCHEDULED SO THAT REMOVAL AND REPLANTING TAKE PLACE IN THE SAME 24-HOUR PERIOD. NO TREES OR PALMS MAY BE "STOCKPILED" ONSITE OR OFFSITE FOR ANY PERIOD OF TIME WITHOUT PRIOR WRITTEN APPROVAL OF THE LANDSCAPE ARCHITECT. WHEN ALLOWED, APPROVAL FOR THE METHOD OF "STOCKPILING" MUST BE OBTAINED FROM THE LANDSCAPE ARCHITECT.
3.1.4. ALL DIGGING IN THE ROOT ZONE DURING THE ROOT PRUNE PROCESS MUST BE DONE BY HAND; NO MACHINERY WILL BE ALLOWED. PRUNING OF ROOTS MUST BE DONE BY HAND WITH CLEAN, SHARP TOOLS. DO NOT PAINT CUT ROOTS WITH TREE PAINT OR ANY KIND OF SEALANT.
3.1.5. MYCORRHIZA (ROOTS® TRANSPLANT OR EQUIVALENT) MUST BE INCORPORATED INTO THE BACKFILL SOIL PRIOR TO BACKFILLING AS PER MANUFACTURER'S RECOMMENDATIONS.
3.1.6. AFTER EACH ROOT PRUNE, EACH SECTION OF ROOTBALL THAT IS PRUNED MUST BE WRAPPED WITH BLACK PLASTIC AND THE TRENCH BACKFILLED WITH ORIGINAL EXCAVATED SOIL. A TREE RING WITH A MINIMUM HEIGHT OF 6" MUST BE CONSTRUCTED 6-12" OUTSIDE THE OUTERMOST EDGE OF THE ROOTBALL AND AROUND THE ENTIRE PERIMETER OF THE ROOTBALL TO DIRECT IRRIGATION WATER AND ANY ADDED SUPPLEMENTS DOWN INTO THE ROOTBALL DURING ROOT REGENERATION.
3.1.7. ONCE THE TREE RING IS CONSTRUCTED AFTER EACH ROOT PRUNE, A HIGH-PHOSPHORUS ROOT STIMULANT MUST BE LIBERALLY APPLIED TO THE SURFACE OF THE ROOTBALL AND THOROUGHLY WATERED IN TO ENCOURAGE NEW ROOT GROWTH.

3.2. TREES
3.2.1. PRIOR TO ANY ROOTS BEING CUT, ALL MAJOR ROOTS MUST BE IDENTIFIED TO DETERMINE THE ROOTBALL DIAMETER BASED ON THE RELATIVE LOCATION AND SIZE OF THE ROOTS.
3.2.2. MANY TREE RELOCATION SPECIFICATIONS USE "GENERAL RULES" TO CALCULATE MINIMUM ROOTBALL DIAMETER, SUCH AS MULTIPLYING THE DIAMETER AT BREAST HEIGHT (DBH) OF THE TREE BY A FACTOR OF 10 OR ALLOWING A MINIMUM OF 9'-12' OF ROOTBALL FOR EVERY 1" OF TREE CALIPER. OTHERS LIST UNREALISTIC MINIMUM SIZES FOR THE ROOTBALLS OF VARIOUS TREE CALIPERS OR HEIGHTS. IN MANY CASES, SUCH APPROACHES RESULT IN ROOTBALLS THAT ARE EITHER TOO LARGE OR TOO SMALL FOR A GIVEN TREE. THE FOLLOWING TABLE LISTS MINIMUM ROOTBALL DIAMETERS BASED ON REAL-WORLD EXPERIENCE OF TREE RELOCATION SPECIALISTS IN SOUTH FLORIDA.

| CALIPER (inches) | MIN. ROOTBALL DIA. (feet) | CALIPER (inches) | MIN. ROOTBALL DIA. (feet) |
|------------------|---------------------------|------------------|---------------------------|
| 1-4              | 3                         | 12-14            | 6                         |
| 4-5              | 4                         | 15-17            | 10                        |
| 6-7              | 5                         | 18-24            | 12-15                     |
| 8-9              | 6                         | 25-30            | 15-25                     |
| 10-11            | 7                         | 30+              | as needed                 |

- 3.2.3. WHENEVER POSSIBLE, ROOTBALLS MUST BE CIRCULAR IN SHAPE WITH AN EQUAL DISTANCE FROM THE TRUNK TO THE EDGE OF THE ROOTBALL ALL AROUND.
3.2.4. MINIMUM ROOTBALL DEPTH MUST BE 24"-36" FOR ALL TREES TO BE RELOCATED, WITH THE ACTUAL DEPTH TO BE DETERMINED ONLY AFTER A THOROUGH EXAMINATION OF ALL ROOTS DURING THE INITIAL ROOT INSPECTION AND BASED ON THE ABSENCE OF MAJOR ROOTS AT THE BOTTOM OF THE ROOTBALL. ROOTBALLS DEEPER THAN 36" MAY BE REQUIRED FOR LARGE SPECIMEN TREES, DEPENDING ON THE RELATIVE LOCATIONS AND DEPTHS OF THE MAJOR ROOTS AS OBSERVED DURING THE INITIAL ROOT INSPECTION.

- 3.2.5. AS A GENERAL RULE, MINIMUM ROOT PRUNE TIME FOR TREES WITH A DBH OF LESS THAN 10" IS 12 WEEKS. THE FIRST ROOT PRUNE MUST BE ON TWO OPPOSING SIDES OF THE ROOTBALL, WITH THE SECOND ROOT PRUNE ON ONE OF THE OTHER TWO SIDES DONE A MINIMUM OF 6 WEEKS LATER, AND A THIRD ROOT PRUNE ON THE LAST SIDE DONE A MINIMUM OF 3 WEEKS AFTER THAT. THE SECOND AND THIRD ROOT PRUNES MAY ONLY BE DONE WHEN HEALTHY NEW ROOT GROWTH FROM EARLIER ROOT PRUNES IS EVIDENT (SEE SECTION 2.14 ABOVE FOR SPECIFICATIONS ON PHOTOGRAPHICALLY DOCUMENTING NEW ROOT GROWTH DURING THE ROOT PRUNE PROCESS). MORE TIME MAY BE NEEDED DURING THE COOLER MONTHS OF THE YEAR.
3.2.6. AS A GENERAL RULE, MINIMUM ROOT PRUNE TIME FOR TREES WITH A DBH OF 10" OR GREATER IS 24 WEEKS. THE FIRST ROOT PRUNE MUST BE ON TWO OPPOSING SIDES OF THE ROOTBALL, WITH THE SECOND ROOT PRUNE ON ONE OF THE OTHER TWO SIDES DONE A MINIMUM OF 12 WEEKS LATER, AND A THIRD ROOT PRUNE ON THE LAST SIDE DONE A MINIMUM OF 6 WEEKS AFTER THAT. THE SECOND AND THIRD ROOT PRUNES MAY ONLY BE DONE WHEN HEALTHY NEW ROOT GROWTH FROM EARLIER ROOT PRUNES IS EVIDENT (SEE SECTION 2.14 ABOVE FOR SPECIFICATIONS ON PHOTOGRAPHICALLY DOCUMENTING NEW ROOT GROWTH DURING THE ROOT PRUNE PROCESS). MORE TIME MAY BE NEEDED DURING THE COOLER MONTHS OF THE YEAR.
3.2.7. CERTAIN HARDWOOD TREES AND GYMNOSPERMS REQUIRE LONGER ROOT PRUNING TIMES. THESE INCLUDE, BUT ARE NOT LIMITED TO, THE FOLLOWING:
- AVOCADO (PERSEA AMERICANA)
- BLACK OLIVE (BUCCIDA BUCERAS)
- BRIDALVEIL (CAESALPINIA GRANADILLO)
- CASSIAS (ALL SPECIES OF CASSIA)
- LIGNUM VITAE (GUAIACUM SANCTUM & G. OFFICINALE)
- PODOCARPUS (PODOCARPUS SP.)
- LIVE OAK (QUERCUS VIRGINIANA)
- MAHOGANY (SWIETENIA MAHAGONI)
- MANGO (MANGIFERA INDICA)
- PIGEON PLUM (COCOLOBIA DIVERSIFOLIA)
- SWEET ACACIA (ACACIA FARNESIANA)
- VERAWOOD (BULNESIA ARBorea)
- WILD TAMARIND (LYSILOMA LATSILISQUAM & L. SABICU)

FOR THESE TREES, THE MINIMUM ROOT PRUNE TIMES DISCUSSED IN SECTIONS 3.2.5 AND 3.2.6 ABOVE MAY BE INSUFFICIENT. ONLY WHEN SUFFICIENT NEW ROOT GROWTH HAS TAKEN PLACE FOLLOWING AN EARLIER ROOT PRUNE CAN THE NEXT ROOT PRUNE BE DONE, AND ONLY WHEN SUFFICIENT NEW ROOT GROWTH HAS TAKEN PLACE FOLLOWING THE FINAL ROOT PRUNE MAY THE TREE BE RELOCATED (SEE SECTION 2.14 ABOVE FOR SPECIFICATIONS ON PHOTOGRAPHICALLY DOCUMENTING NEW ROOT GROWTH DURING THE ROOT PRUNE PROCESS).

3.3. PALMS
THE FOLLOWING TABLE LISTS MINIMUM ROOTBALL DIAMETERS FOR VARIOUS SPECIES OF PALMS BASED ON REAL-WORLD EXPERIENCE OF RELOCATION SPECIALISTS IN SOUTH FLORIDA:

| PALM SPECIES                        | ROOTBALL SPECIFICATIONS             |
|-------------------------------------|-------------------------------------|
| SABAL / CABBAGE PALM                | 36" diameter                        |
| QUEEN & FOXTAIL PALMS               | 12" from trunk in all directions    |
| ROYAL & COCONUT PALMS               | 18-24" from trunk in all directions |
| CANARY DATE PALM                    | 24" from trunk in all directions    |
| SLOW-GROWING PALMS (see sec. 3.3.4) | 24" from trunk in all directions    |

3.3.2. PALM ROOTBALLS MUST BE A MINIMUM OF 24" DEEP. WHENEVER POSSIBLE, ROOTBALLS MUST BE CIRCULAR IN SHAPE WITH AN EQUAL DISTANCE FROM THE TRUNK TO THE EDGE OF THE ROOTBALL ALL AROUND.

3.3.3. AS A GENERAL RULE, MINIMUM ROOT PRUNE TIME FOR PALMS IS 6-8 WEEKS. THE FIRST ROOT PRUNE MUST BE ON TWO OPPOSING SIDES OF THE ROOTBALL, WITH THE SECOND ROOT PRUNE ON ONE OF THE OTHER TWO SIDES DONE A MINIMUM OF 3-4 WEEKS LATER, AND A THIRD ROOT PRUNE ON THE LAST SIDE DONE A MINIMUM OF 4-5 WEEKS AFTER THAT. THE SECOND AND THIRD ROOT PRUNES MAY ONLY BE DONE WHEN HEALTHY NEW ROOT GROWTH FROM EARLIER ROOT PRUNES IS EVIDENT (SEE SECTION 2.14 ABOVE FOR SPECIFICATIONS ON PHOTOGRAPHICALLY DOCUMENTING NEW ROOT GROWTH DURING THE ROOT PRUNE PROCESS). MORE TIME MAY BE NEEDED DURING THE COOLER MONTHS OF THE YEAR.

3.3.4. CERTAIN PALMS, IN PARTICULAR THOSE THAT ARE SLOW GROWING, REQUIRE LONGER ROOT PRUNING TIME. THESE INCLUDE, BUT ARE NOT LIMITED TO, THE FOLLOWING:

- ALL SPECIES OF ARCHONTOPHOENIX
- ALL SPECIES OF CORYPHA
- AMERICAN OIL PALMS (ALL SPECIES OF ATTALEA)
- BISMARCK PALM (BISMARCKIA NOBILIS)
- CUBAN & CARIBBEAN COPERNICIA
- CUBAN BELLY PALM (GASTROCOCCOS CRISPA)
- GINGERBREADDIUM PALMS (ALL SPECIES OF HYPHAENE)
- PALMYRA PALMS (ALL SPECIES OF BORAASSUS)
- SATAKE PALM (SATAKENTIA LIUKUENSIS)
- SAW PALMETTO (SERENOA REPENS)
- SILVER PALM (COCOOTHRIX ARGENTATA)
- ZOMBIE PALM (ZOMBIA ANTILARUM)

FOR THESE PALMS, THE MINIMUM ROOT PRUNING TIME IS 4-6 MONTHS OR GREATER. ONLY WHEN SUFFICIENT NEW ROOT GROWTH HAS TAKEN PLACE FOLLOWING AN EARLIER ROOT PRUNE CAN THE NEXT ROOT PRUNE BE DONE, AND ONLY WHEN SUFFICIENT NEW ROOT GROWTH HAS TAKEN PLACE FOLLOWING THE FINAL ROOT PRUNE MAY THE TREE BE RELOCATED (SEE SECTION 2.14 ABOVE FOR SPECIFICATIONS ON PHOTOGRAPHICALLY DOCUMENTING NEW ROOT GROWTH DURING THE ROOT PRUNE PROCESS).

- 4. CANOPY PRUNING SPECIFICATIONS
4.1. TREES
4.1.1. PRIOR TO RELOCATION, THE CANOPY OF EACH TREE TO BE RELOCATED MUST BE SELECTIVELY PRUNED TO REMOVE CROSSING, DEAD, DISEASED, BROKEN, AND LOW-HANGING BRANCHES THAT MAY INTERFERE WITH CONSTRUCTION ACTIVITIES, OR THAT MAY INTERFERE OR RESTRICT STRAPPING OR LIFTING THE TREE DURING RELOCATION.
4.1.2. FOR TREES BEING RELOCATED ONSITE, THE CANOPY MAY BE SELECTIVELY THINNED AND REDUCED BY NO MORE THAN 1/3 OF THE OVERALL CANOPY MASS, AT THE DIRECTION OF THE LANDSCAPE ARCHITECT; HOWEVER, THE BASIC SHAPE, FORM, AND CHARACTER OF THE TREE MUST BE PRESERVED.
4.1.3. FOR TREES BEING RELOCATED OFFSITE, THE CANOPY MUST BE PRUNED, AT THE DIRECTION OF THE LANDSCAPE ARCHITECT, TO FIT ON THE TRAILER FOR TRANSPORT. EVERY EFFORT MUST BE MADE TO RETAIN AS MANY LARGE BRANCHES AS POSSIBLE AND TO PRESERVE AS MUCH OF THE SHAPE, FORM, AND CHARACTER OF THE TREE AS POSSIBLE TO THE WIDEST LOAD WIDTH ALLOWABLE BY THE FLORIDA DEPARTMENT OF TRANSPORTATION. CONTRACTOR MUST OBTAIN ALL NECESSARY PERMITS AND ESCORTS TO TRANSPORT WIDE LOADS, PER FLORIDA LAW.
4.1.4. ALL CANOPY PRUNING MUST BE CONDUCTED FOLLOWING ANSI A-300 TREE PRUNING STANDARDS AND BEST MANAGEMENT PRACTICES.
4.1.5. ALL DEBRIS GENERATED DURING CANOPY PRUNING MUST BE REMOVED OFFSITE AND DISPOSED.

- 4.2. PALMS
4.2.1. IT IS WELL KNOWN THAT SOME PALMS SURVIVE RELOCATION BETTER WHEN ALL OF THE LEAVES ARE REMOVED (E.G., CABBAGE PALM, SABAL PALMETTO), AND THAT OTHER PALMS BENEFIT FROM HAVING THEIR LEAVES CUT IN HALF DURING RELOCATION (E.G., COCONUT PALM, COCOS NUCIFERA). BOTH OF THESE HORTICULTURAL PRACTICES, WHILE TRUE, ARE ONLY APPLICABLE WHEN PALMS ARE NOT ROOT PRUNED. LEAVES DO NOT NEED TO BE CUT IN HALF OR REMOVED FROM PALMS THAT ARE ADEQUATELY ROOT PRUNED. ON OCCASION WHEN SUFFICIENT ROOT PRUNING TIME IS NOT AVAILABLE, PALMS TO BE RELOCATED MAY HAVE THEIR LEAVES CUT IN HALF OR REMOVED ENTIRELY AT THE DIRECTION OF THE LANDSCAPE ARCHITECT.
4.2.2. PALM LEAVES MUST BE TIED UP WITH 2-PLY BIODEGRADABLE TWINE PRIOR TO RELOCATION TO PREVENT MECHANICAL DAMAGE DURING THE RELOCATION PROCESS.
4.2.3. PALM TRUNKS SHALL ONLY BE "CLEANED UP" ACCORDING TO THE LANDSCAPE ARCHITECT'S SPECIFICATIONS SPECIFIC TO EACH PALM.

5. RELOCATION SPECIFICATIONS

- 5.1. GENERAL
5.1.1. LANDSCAPE CONTRACTOR TO FLAG ALL PROPOSED PLANT LOCATIONS FOR LANDSCAPE ARCHITECT'S APPROVAL PRIOR TO INSTALLATION. NOTIFY LANDSCAPE ARCHITECT A MINIMUM OF 15 DAYS PRIOR TO REVIEW.
5.1.2. ALL TREES AND PALMS TO BE RELOCATED MUST BE WATERED DAILY FOR AT LEAST 5 DAYS PRIOR TO ANY RELOCATION TO ENSURE THAT THEY ARE FULLY HYDRATED. EACH WATERING MUST THOROUGHLY SATURATE THE ROOTBALL TO ITS FULL DEPTH.
5.1.3. ALL ROOTBALLS MUST BE WRAPPED IN BURLAP AND THEN TIGHTLY WIRE-WRAPPED (USING REDLINE HORSE WIRE OR EQUIVALENT) TO KEEP THE ENTIRE ROOTBALL INTACT DURING RELOCATION. TREES AND PALMS GROWING IN LIMESTONE MUST BE DUG AND RELOCATED WITH THE ROOTS ATTACHED TO A SECTION OF ROCK AS PART OF THE ROOTBALL, SUCH THAT THE ROOTS REMAIN INTACT. ROOTBALLS COMING FROM SAND OR SANDY SOIL MAY ALSO NEED TO BE BOXED PRIOR TO RELOCATION, AT THE DISCRETION OF THE LANDSCAPE ARCHITECT.
5.1.4. TREES AND PALMS BEING RELOCATED OFFSITE MUST HAVE THEIR ENTIRE ROOTBALLS THOROUGHLY AND TIGHTLY WRAPPED WITH PLASTIC SHRINK WRAP ON THE OUTSIDE OF THE WIRE WRAP, AND THE ENTIRE TREE OR PALM (INCLUDING CANOPY, TRUNK, AND ROOTBALL) MUST BE COVERED WITH A BREATHABLE TARP (E.G. SHADE CLOTH) DURING TRANSPORT.
5.1.5. NEW PLANTING PITS FOR RELOCATED TREES AND PALMS MUST BE PREPARED PRIOR TO LIFTING THE PALM OR TREE FROM ITS CURRENT LOCATION AND MUST BE AT LEAST 3-4 FEET WIDER THAN THE ROOTBALL AND THE SAME DEPTH AS THE ROOTBALL, SUCH THAT THE FINAL ELEVATION OF THE TOP OF THE ROOTBALL IS AT OR SLIGHTLY ABOVE (NO MORE THAN 2" HIGHER) FINAL GRADE.
5.1.6. TREES AND PALMS TO BE RELOCATED MUST BE LIFTED BY THE ROOTBALL ONLY, USING APPROPRIATELY SIZED (LENGTH AND STRENGTH) LIFTING STRAPS OR CHAINS. DURING LIFTING, THE TREE OR PALM MUST BE BALANCED IN A MORE-OR-LESS UPRIGHT POSITION, WITH THE STRAP ON THE TRUNK USED ONLY FOR BALANCING AND MANEUVERING THE TREE OR PALM INTO POSITION. NO CHAINS MAY BE USED AROUND OR AGAINST THE TRUNK AT ANY TIME. AT NO TIME SHALL 100% OF THE WEIGHT OF THE TREE OR PALM BE ON THE STRAP ATTACHED TO THE TRUNK. TRUNKS MUST BE HEAVILY PADDED WITH 30-60 LAYERS (DEPENDING ON SIZE AND WEIGHT) OF BURLAP BENEATH THE BALANCING STRAP.
5.1.7. TREES AND PALMS MUST BE LIFTED WITH A CRANE OR BACKHOE APPROPRIATELY SIZED FOR THE SIZE AND WEIGHT OF THE TREE OR PALM AND LIFTED OR CARRIED DIRECTLY TO THE FINAL INSTALLATION LOCATION OR TRANSPORT TRAILER.
5.1.8. ONCE LIFTING BEGINS, ANY UNCUT ROOTS UNDER OR AROUND THE ROOTBALL THAT MAY YET REMAIN MUST BE IMMEDIATELY SEVERED WITH HAND PRUNING TOOLS TO MINIMIZE TEARING AND ROOT DAMAGE.
5.1.9. AGRIFORM PLANTING TABLETS (OR APPROVED EQUIVALENT) MUST BE EVENLY DISTRIBUTED AROUND THE PERIMETER OF THE PLANTING PIT AT THE RATE OF 2 TABLETS PER 1' TRUNK CALIPER PRIOR TO BACKFILLING.
5.1.10. MYCORRHIZA (ROOTS® TRANSPLANT OR EQUIVALENT) MUST BE INCORPORATED INTO THE BACKFILL SOIL PRIOR TO BACKFILLING.
5.1.11. RELOCATED TREES AND PALMS MUST BE CENTERED IN THE PLANTING PIT, AND THE PIT BACKFILLED USING A 1:1 MIXTURE OF EXISTING SOIL AND 80:20 (DOT SAND/MUCK) SOIL MIX THOROUGHLY BLENDED TOGETHER. DO NOT USE MUDDY SOIL AS BACKFILL. (SEE 5.2.2 BELOW FOR SPECIAL CONDITIONS REGARDING DATE PALM BACKFILL SPECIFICATIONS.)
5.1.12. SMALL TREES AND PALMS MUST BE FIRMLY BRACED USING A MINIMUM OF FOUR 4" X 4" WOODEN BRACES ATTACHED TO 2" X 4" WOODEN BATTENS HELD IN PLACE WITH TWO STEEL BANDS. LARGER TREES MAY REQUIRE 6" X 6" WOODEN POSTS OR EVEN TELEPHONE POLES TO PROVIDE SUFFICIENT BRACING STRENGTH TO PREVENT TOPPLING DURING WIND EVENTS. A SUFFICIENT NUMBER OF BATTENS MUST BE STRATEGICALLY PLACED AROUND THE TRUNK SUCH THAT THE STEEL BANDS NEVER CONTACT THE TRUNK. NO BURLAP IS TO REMAIN UNDER THE WOODEN BATTENS DURING BRACING, BUT SEVERAL LAYERS OF BURLAP SHOULD BE LEFT UNDER THE WOODEN BATTENS WHEN BRACING PALMS. NAILS SHALL NEVER BE DRIVEN DIRECTLY INTO THE TRUNK DURING BRACING. BRACING MUST REMAIN IN PLACE FOR A MINIMUM OF ONE YEAR.
5.1.13. A TREE RING WITH A MINIMUM HEIGHT OF 6" MUST BE CONSTRUCTED 6-12" OUTSIDE THE OUTERMOST EDGE OF THE ROOTBALL AND AROUND THE ENTIRE PERIMETER OF THE ROOTBALL TO DIRECT IRRIGATION WATER AND ANY SUPPLEMENTS THAT ARE ADDED DOWN INTO THE ROOTBALL DURING ROOT REGENERATION.
5.1.14. ONCE THE TREE RING IS CONSTRUCTED, A HIGH-PHOSPHORUS ROOT STIMULANT MUST BE LIBERALLY APPLIED TO THE SURFACE OF THE ROOTBALL AND THOROUGHLY WATERED IN.
5.1.15. ROOTBALLS MUST BE THOROUGHLY WATERED IN USING A HOSE AND A JOHNSON BAR INSERTED TO THE VERY BOTTOM OF THE ROOTBALL AND SWUNG BACK AND FORTH TO PREVENT FORMATION OF AIR POCKETS. THE JOHNSON BAR TECHNIQUE MUST BE REPEATED AT LEAST ONCE MORE WITHIN ONE WEEK AFTER RELOCATION, AND AGAIN IF ANY SIGNS OF STRESS BECOME APPARENT.
5.1.16. ORGANIC MULCH (MELALEUCA IS PREFERRED) MUST BE APPLIED WITHIN 48 HOURS OF RELOCATION AT A DEPTH OF 3-4" OVER THE ENTIRE TOP OF THE ROOTBALL FROM THE TREE RING TO WITHIN 6" OF THE TRUNK. MULCH MUST NOT BE APPLIED OR ALLOWED TO ACCUMULATE DIRECTLY AGAINST THE TRUNK.
5.1.17. PITS FROM WHICH THE RELOCATED TREES AND PALMS WERE REMOVED MUST BE CLEANED OF ALL RESIDUAL ROOTS, STUMPS, AND PORTIONS THEREOF AND BACKFILLED WITH CLEAN FILL FLUSH WITH THE SURROUNDING GRADE.
5.1.18. RESTORE THE SURFACE WITH MATERIAL TO MATCH ADJACENT AREAS. MATERIAL TO BE APPROVED BY LANDSCAPE ARCHITECT. CONTRACTOR TO PROVIDE A MINIMUM OF ONE YEAR WARRANTY ON SETTLING AND PLANT MATERIAL FROM TIME OF SUBSTANTIAL COMPLETION.
5.2. SPECIAL CONDITIONS

- 5.2.1. MULTI-TRUNK TREES AND PALMS MUST BE RELOCATED AS ONE UNIT WITH A SINGLE ROOTBALL.
5.2.2. PLANTING PITS FOR EDIBLE DATE PALMS (PHOENIX DACTYLIFERA) MUST BE BACKFILLED WITH PURE DOT SILICA SAND.

6. MAINTENANCE SPECIFICATIONS

- 6.1. GENERAL
6.1.1. ALL RELOCATED TREES AND PALMS MUST BE MAINTAINED FOR ONE YEAR FROM THE DATE OF RELOCATION TO THEIR FINAL LOCATIONS.
6.1.2. CONTRACTOR MUST MAINTAIN ALL RELOCATED TREES AND PALMS FOR ONE FULL YEAR FROM THE DATE OF RELOCATION TO THE FINAL LOCATION.
6.1.3. WHENEVER POSSIBLE, EACH TREE AND PALM MUST BE WATERED BY A PERMANENT AUTOMATIC IRRIGATION SYSTEM FOLLOWING RELOCATION. EACH WATERING MUST THOROUGHLY SATURATE THE ROOTBALL TO ITS FULL DEPTH; THIS WILL REQUIRE 25-50 GALLONS OF WATER FOR SMALL TREES AND PALMS DEPENDING ON ROOTBALL SIZE, WHILE LARGER TREES WILL REQUIRE A MINIMUM OF 10 GALLONS PER FOOT OF ROOTBALL DIAMETER (I.E. A 10' DIAMETER ROOTBALL WILL REQUIRE A MINIMUM OF 100 GALLONS PER WATERING EVENT). WATERING FREQUENCY MUST BE EVERY DAY FOR THE FIRST TWO WEEKS, EVERY OTHER DAY FOR THE NEXT THREE WEEKS, AND EVERY THIRD DAY FOR THE NEXT 6-8 WEEKS.
6.1.4. WHEN AN AUTOMATIC IRRIGATION SYSTEM IS NOT POSSIBLE, CONTRACTOR IS RESPONSIBLE FOR HAND WATERING RELOCATED TREES AND PALMS THROUGHOUT THE MAINTENANCE PERIOD AND UNTIL FINAL ACCEPTANCE BY THE LANDSCAPE ARCHITECT AND/OR CLIENT.
6.1.5. IMMEDIATELY AFTER RELOCATION TO THE FINAL LOCATION, A HIGH-PHOSPHORUS ROOT STIMULANT MUST BE APPLIED TO THE SURFACE OF THE ROOTBALL AT THE RECOMMENDED LABEL RATE AND WATERED IN WITH A DRENCH CONSISTING OF A SYSTEMIC INSECTICIDE AND A CONTACT ROOT ROT FUNGICIDE, FOLLOWING LABEL INSTRUCTIONS, AS INITIAL PREVENTATIVE MAINTENANCE.
6.1.6. EVERY THREE MONTHS THEREAFTER, A HIGH-PHOSPHORUS ROOT STIMULANT MUST BE APPLIED TO THE SURFACE OF THE ROOTBALL AT THE RECOMMENDED LABEL RATE AND WATERED IN WITH A DRENCH CONSISTING OF A SYSTEMIC INSECTICIDE AND A BROAD-SPECTRUM SYSTEMIC FUNGICIDE, FOLLOWING LABEL INSTRUCTIONS, AS CONTINUING PREVENTATIVE MAINTENANCE.
6.1.7. IRRIGATION AND BRACING MUST BE CHECKED AND EACH TREE OR PALM THOROUGHLY INSPECTED FOR SIGNS OF STRESS, DISEASE, OR PEST PROBLEMS ON A MONTHLY BASIS.
6.2. SHADE TREES
6.2.1. IMMEDIATELY AFTER RELOCATION TO THE FINAL LOCATION AND EVERY THREE MONTHS THEREAFTER, A HIGH-QUALITY, SLOW-RELEASE 15-2-15 GRANULAR FERTILIZER MUST BE APPLIED, AT THE RECOMMENDED LABEL RATE, SPREAD EVENLY ACROSS THE SURFACE OF THE ROOTBALL.
6.2.2. FOLIAR FEED FOUR TIMES PER YEAR.
6.3. FLOWERING TREES
6.3.1. IMMEDIATELY AFTER RELOCATION TO THE FINAL LOCATION AND EVERY THREE MONTHS THEREAFTER, A HIGH-QUALITY, SLOW-RELEASE 5-10-15 GRANULAR FERTILIZER MUST BE APPLIED, AT THE RECOMMENDED LABEL RATE, SPREAD EVENLY ACROSS THE SURFACE OF THE ROOTBALL.
6.3.2. FOLIAR FEED FOUR TIMES PER YEAR.

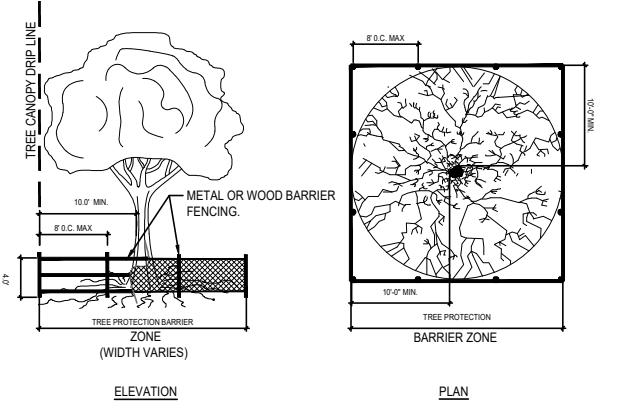
- 6.4. PALMS
6.4.1. STRING MUST BE REMOVED FROM THE TIED UP LEAVES IMMEDIATELY AFTER RELOCATION TO THE FINAL LOCATION IF THE PALM WAS ROOT PRUNED OR WITHIN 30-45 DAYS AFTER RELOCATION ON THE OCCASION THE LANDSCAPE ARCHITECT APPROVED RELOCATION WITHOUT ROOT PRUNING DUE TO TIME CONSTRAINTS.
6.4.2. IMMEDIATELY AFTER RELOCATION TO THE FINAL LOCATION AND EVERY THREE MONTHS THEREAFTER, A HIGH-QUALITY, SLOW-RELEASE 8-4-12 GRANULAR PALM FERTILIZER WITH MINORS MUST BE APPLIED, AT THE RECOMMENDED LABEL RATE, SPREAD EVENLY ACROSS THE SURFACE OF THE ROOTBALL.
6.4.3. FOLIAR FEED SIX TIMES PER YEAR.

7. TREE PROTECTION SPECIFICATIONS

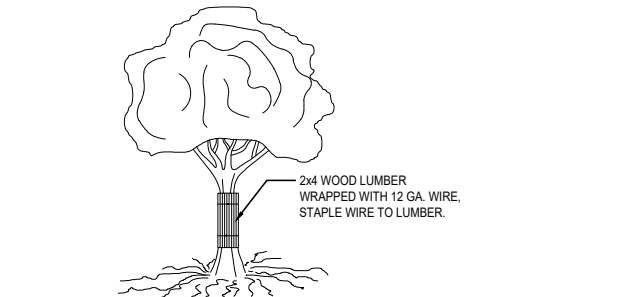
- 7.1. TREE PROTECTION FENCES SHALL BE CONSTRUCTED PRIOR TO ANY CONSTRUCTION ACTIVITY INCLUDING GRUBBING FOR ALL TREES / PALMS TO REMAIN OR BE RELOCATED.
7.2. FENCES SHOULD BE OF STURDY CONSTRUCTION. STURDY TEMPORARY BARRIERS SHALL BE INSTALLED AROUND ALL TREE PROTECTION ZONES. BARRIERS SHALL BE A MINIMUM OF FOUR FEET HIGH, AND SHALL BE CONSTRUCTED OF CONTINUOUS CHAIN LINK FENCE WITH METAL POSTS AT EIGHT-FOOT SPACING, OR OF TWO-BY-FOUR INCH POSTS WITH THREE EQUALLY SPACED TWO-BY-FOUR INCH RAILS. POSTS MAY BE SLOTTED TO AVOID ROOTS.
7.3. FENCES MUST BE MAINTAINED INTACT UNTIL THE PROJECT IS COMPLETED. THEY SHOULD NOT BE REMOVED OR DROPPED FOR ANY REASON WITHOUT AUTHORIZATION FROM THE CITY'S URBAN FORESTER.
7.4. NO ACTIVITY OR DISTURBANCE SHOULD OCCUR WITHIN THE FENCED AREAS, INCLUDING VEHICLE USE, STORAGE OF MATERIALS, DUMPING OF LIQUIDS OR MATERIALS, GRADE CHANGES, GRUBBING, MECHANICAL TRENCHING FOR IRRIGATION, ELECTRICAL LIGHTING, ETC.

8. WARRANTY

- 8.1. ALL RELOCATED TREES AND PALMS MUST BE GUARANTEED FOR ONE YEAR FROM THE DATE OF RELOCATION TO THEIR FINAL LOCATIONS.
8.2. IF A TREE OR PALM DIES WITHIN THE 1-YEAR WARRANTY PERIOD, IT MUST BE REMOVED AND REPLACED AT CONTRACTOR'S EXPENSE.
8.3. IF A TREE OR PALM PERFORMS POORLY WITHIN THE 1-YEAR WARRANTY PERIOD, IT MUST BE REMOVED AND REPLACED AT THE CONTRACTOR'S EXPENSE. THE DECISION TO REPLACE BASED ON POOR HEALTH IS AT THE DISCRETION OF THE LANDSCAPE ARCHITECT.
8.4. IF A TREE OR PALM SETTLES TO AN UNHEALTHY DEPTH WITHIN THE 1-YEAR WARRANTY PERIOD, AS DEEMED BY THE LANDSCAPE ARCHITECT, IT MUST BE RAISED TO THE CORRECT GRADE AT CONTRACTOR'S EXPENSE.



1. TREE BARRICADE DETAIL SCALE: N/A



2. TREE TRUNK PROTECTION DETAIL SCALE: N/A

**jungles**  
RAYMOND JUNGLES INC  
Landscape Architect FASLA  
2964 Aviation Ave., Miami, FL 33133  
PH 305.658.6777  
www.raymondjungles.com  
PROJECT NO. : 22065

Design Review Board  
Concept Package  
**456 STAR ISLAND**  
4-5-6 Star Island Drive, Miami Beach, FL 33139

REVISIONS:  
No. Date Description  
SEAL:  
LANDSCAPE ARCHITECT:  
FLORIDA LICENSE NO. LAA00000000  
Not valid for construction unless signed in this box.  
SHEET TITLE:  
**TREE DISPOSITION NOTES & DETAILS**  
Scale: AS NOTED  
Drawn By: ZZ, LP, FC  
Checked By: CB  
Date: 06-20-2025  
SHEET NUMBER:  
**LD.300**

















## 4-6 Star Island - Proposed Plant List

Star Island, FL  
June 20, 2025

| EXISTING TREES TO REMAIN |       |   |                         |  |
|--------------------------|-------|---|-------------------------|--|
| QTY                      | SYM   | Botanical Name  | Common Name             | Specification  |
| 1                        | CMA   | <i>Chambeyronia macrocarpa</i>                                      | Red Feather Palm        | Existing to remain on-site, #629   |
| 1                        | CRO   | <i>Clusia rosea</i>   | Pitch Apple             | Existing to remain on-site, #628   |
| RELOCATED TREES / PALMS  |       |   |                         |  |
| QTY                      | SYM   | Botanical Name  | Common Name             | Specification  |
| 1                        | R-ADI | <i>Adansonia digitata</i>   | Baobab                  | Existing to be relocated on-site, #61047   |
| 4                        | R-LLO | <i>Latania sp.</i>  | Latan Palm              | Existing to be relocated on-site, #514,61048,61049,61050   |
| 4                        | R-CRO | <i>Clusia rosea</i>   | Pitch Apple             | Existing to be relocated on-site, #506,521,422,612   |
| 1                        | R-PRÉ | <i>Phoenix recinata</i>   | Senegal Date Palm       | Existing to be relocated on-site, #516   |
| 1                        | R-FBE | <i>Ficus benghalensis</i>   | Banyan                  | Existing to be relocated on-site, #530   |
| 4                        | R-RRE | <i>Roystonia regia</i>  | Royal Palm              | Existing to be relocated on-site, #537,607,614,61050   |
| 1                        | R-PCA | <i>Phoenix canariensis</i>  | Canary Island Date Palm | Existing to be relocated on-site, #404   |
| 8                        | R-POA | <i>Phoenix dactylifera 'Medjool'</i>                                | Medjool Date Palm       | Existing to be relocated on-site, #542,543,544,545,546,547,548,549   |
| 1                        | R-KAF | <i>Rigida africana</i>  | Sausage Tree            | Existing to be relocated on-site, #61000   |
| 9                        | R-PPS | <i>Phoenix spp.</i>   | Date Palm clump         | Existing to be relocated on-site, #61019-61026,61029   |
| 7                        | R-QVI | <i>Quercus virginiana</i>   | Live Oak                | Existing to be relocated on-site, #61051,61052,61009,508,61016,61017,61011   |
| 2                        | R-BSI | <i>Bursera simaruba</i>   | Black Limbo             | Existing to be relocated on-site, #61032,413   |
| 6                        | R-ALA | <i>Amphitecna latifolia</i>   | Black Calabash          | Existing to be relocated on-site, #602,603,632,633,635,636   |
| 1                        | R-BNO | <i>Bismarckia nobilis</i>   | Bismarck Palm           | Existing to be relocated on-site, #418   |
| 1                        | R-PLL | <i>Pseudobambax ellipticum</i>                                      | Shaving Brush Tree      | Existing to be relocated on-site, #61010   |
| 1                        | R-CUV | <i>Coccoloba uvifera</i>  | Seagrape                | Existing to be relocated on-site, #61018   |
| 1                        | R-PP1 | <i>Pongamia pinnata</i>   | Pongamia Tree           | Existing to be relocated on-site, #61040   |
| 2                        | R-SMA | <i>Swietenia mahagoni</i>   | Mahogany                | Existing to be relocated on-site, #61044,630   |
| 1                        | R-RMA | <i>Ravenala madagascariensis</i>                                    | Traveler's Palm         | Existing to be relocated on-site, #624   |
| 3                        | R-SI  | <i>Sotakentia lukuiensis</i>  | Satakentia Palm         | Existing to be relocated on-site, #604,615,618   |
| 1                        | R-BAR | <i>Bulnesia arborea</i>   | Verawood                | Existing to be relocated on-site, #631   |
| 1                        | R-HEL | <i>Heterospathes elata</i>  | Sagui Palm Double       | Existing to be relocated on-site, #605   |
| 1                        | R-CDI | <i>Coccoloba diversifolia</i>                                       | Pigeon Plum             | Existing to be relocated on-site, #610   |
| 2                        | R-MFR | <i>Myrcianthes fragrans</i>   | Simpson's Stopper       | Existing to be relocated on-site, #601,616   |
| 1                        | R-CSP | <i>Chorisia speciosa</i>  | Silk Floss Tree         | Existing to be relocated on-site, #634   |
| 1                        | R-DLU | <i>Drypis lutea</i>   | Arecia Palm             | Existing to be relocated on-site, #647   |
| 6                        | R-PCA | <i>Phoenix canariensis</i>  | Canary Island Date Palm | Existing to be relocated on-site, #405,406,408,415,436,437 (Not shown on plan, to be relocated by Landscape Architect)       |
| 1                        | R-LLO | <i>Latania sp.</i>  | Latan Palm              | Existing to be relocated on-site, #501 (Not shown on plan, to be relocated by Landscape Architect)                           |
| 1                        | R-PLU | <i>Plumeria spp.</i>  | Frangipani              | Existing to be relocated on-site, #416 (Not shown on plan, to be relocated by Landscape Architect)                           |
| 1                        | R-EGR | <i>Enecephalartos gratus</i>  | Same                    | Existing to be relocated on-site, #439 (Not shown on plan, to be relocated by Landscape Architect)                           |
| 2                        | R-QVI | <i>Quercus virginiana</i>   | Live Oak                | Existing to be relocated on-site, #61045-61046 (Not shown on plan, to be relocated by Landscape Architect)                   |
| 8                        | R-PPS | <i>Phoenix spp.</i>   | Date Palm Clump         | Existing to be relocated on-site, #61033-61036,61037-61039,61043 (Not shown on plan, to be relocated by Landscape Architect) |
| 1                        | R-CGU | <i>Clusia guttifera</i>   | Small Leaf Clusia       | Existing to be relocated on-site, #61049 (Not shown on plan, to be relocated by Landscape Architect)                         |
| 4                        | R-RRE | <i>Roystonia regia</i>  | Royal Palm              | Existing to be relocated on-site, #536,538,617,61050 (Not shown on plan, to be relocated by Landscape Architect)             |
| 3                        | R-SI  | <i>Sotakentia lukuiensis</i>  | Satakentia Palm         | Existing to be relocated on-site, #619,626,627 (Not shown on plan, to be relocated by Landscape Architect)                   |
| 4                        | R-RMA | <i>Ravenala madagascariensis</i>                                    | Traveler's Palm         | Existing to be relocated on-site, #621,622,623,625 (Not shown on plan, to be relocated by Landscape Architect)               |
| 1                        | R-RRE | <i>Roystonia regia</i>  | Royal Palm              | Existing to be relocated on-site, #611 (Not shown on plan, to be relocated by Landscape Architect)                           |
| 2                        | R-CMA | <i>Chambeyronia macrocarpa</i>                                      | Red Feather Palm        | Existing to be relocated on-site, #606,613 (Not shown on plan, to be relocated by Landscape Architect)                       |
| 2                        | R-CWI | <i>Canella winterana</i>  | Wild Cinnamon Bark      | Existing to be relocated on-site, #608,609 (Not shown on plan, to be relocated by Landscape Architect)                       |
| 1                        | R-HEL | <i>Heterospathes elata</i>  | Sagui Palm Double       | Existing to be relocated on-site, #620 (Not shown on plan, to be relocated by Landscape Architect)                           |
| TREES                    |       |   |                         |  |
| QTY                      | SYM   | Botanical Name  | Common Name             | Specification  |
| 1                        | SFT   | <i>Specimen Flowering Tree</i>                                      | To Be Determined        | Asymmetrical Specimen, 25' HT. x 20" SPR., 4" DBH. min.  |
| PALMS                    |       |   |                         |  |
| QTY                      | SYM   | Botanical Name  | Common Name             | Specification  |
| 4                        | ACD   | <i>Attalea cohune</i>   | American Oil Palm       | Matching Specimens, 15' WD., 35' O.A. HT., 6" DBH. min.  |
| 1                        | CBA   | <i>Caperania baileyana</i>  | Bailey Palm             | Matching Specimens, 15' WD., 35' O.A. HT., 6" DBH. min.  |
| 2                        | CNU   | <i>Cocos nucifera</i>   | Coconut Palm            | 25'-30' WD., Character Trunk, 6" DBH. min.   |
| 4                        | DPE   | <i>Drypis pembana</i>   | Pemba Palm              | 30' HT. x 20' HT. SPR., 9 Mature Trunks, 6" DBH. min.  |
| 11                       | PAL   | <i>Misc. Specimen Large Scale Palm (To Be Determined)</i>           | To Be Determined        | Specimen, Asymmetrical Character, 30' HT. Heavy, 6" DBH. min.  |
| 3                        | PAL-2 | <i>Misc. Specimen Multi-Trunk Palm</i>                              | To Be Determined        | Specimen, Multi-trunk, 20' HT. 16" SPR., 6" DBH. min.  |
| 5                        | PCA   | <i>Phoenix canariensis</i>  | Canary Island Date Palm | Matching Specimens, 15' WD., 35' O.A. HT., 6" DBH. min.  |
| 1                        | RRE   | <i>Roystonia regia</i>  | Royal Palm              | Matching Specimens, 25' WD., 35' O.A. HT., 6" DBH. min.  |
| 4                        | SU    | <i>Sotakentia lukuiensis</i>  | Satakentia Palm         | Matching Specimens, 20'-25' HT., 6" DBH. min.  |
| UNDERSTORY TREES         |       |   |                         |  |
| QTY                      | SYM   | Botanical Name  | Common Name             | Specification  |
| 3                        | PRA   | <i>Pimenta racemosa</i>   | Bay Rum Tree            | 20' HT. x 12" SPR., 6" DBH. min. Full to Base  |
| 8                        | MUT   | <b>Misc. Native Understory Trees to be selected from list below</b> |                         |  |
|                          | CWI   | <i>Canella winterana</i>  | Wild Cinnamon Bark      | 16' HT. x 12" SPR., 6" DBH. min. Yes   |
|                          | CDI   | <i>Coccoloba diversifolia</i>                                       | Pigeon Plum             | 16' HT. x 12" SPR., 6" DBH. min. Yes   |
|                          | CES   | <i>Conocarpus erectus 'Sericeus'</i>                                | Silver Buttonwood       | 16' HT. x 12" SPR., 6" DBH. min. Yes   |
|                          | EFO   | <i>Eugenia foetida</i>  | Spanish Stopper         | 16' HT. x 12" SPR., 6" DBH. min. Yes   |
|                          | ERH   | <i>Eugenia rhombica</i>   | Red Stopper             | 16' HT. x 12" SPR., 6" DBH. min. Yes   |
|                          | GSA   | <i>Guaiacum sanctum</i>   | Lignum Vitae            | 16' HT. x 12" SPR., 6" DBH. min. Yes   |
|                          | GDI   | <i>Guapira discolor</i>   | Blolly                  | 16' HT. x 12" SPR., 6" DBH. min. Yes   |
|                          | GLU   | <i>Gymnanthes lucida</i>  | Crabwood                | 16' HT. x 12" SPR., 6" DBH. min. Yes   |
|                          | KFE   | <i>Krugiodendron februum</i>  | Black Ironwood          | 16' HT. x 12" SPR., 6" DBH. min. Yes   |
|                          | MFR   | <i>Myrcianthes fragrans</i>   | Simpson's Stopper       | 16' HT. x 12" SPR., 6" DBH. min. Yes   |
| GROUNDCOVERS             |       |   |                         |  |
| QTY                      | SYM   | Botanical Name  | Common Name             | Specification  |
| 11,200                   | QIA   | <i>Ophiopogon japonicus 'nana'</i>                                  | Dwarf Mondo Grass       | 4" pot. @6" O.C.   |
| 855                      | BRE   | <i>Barleria repens</i>  | Coral Creeper           | 1 Gal. @12" O.C., Full   |
| 880                      | PGL   | <i>Pilea glauca</i>   | Same                    | 1" pot. @8" O.C.   |
| 74                       | PAN   | <i>Pitcairnia angustifolia</i>                                      | Pina cortadora          | 3 Gal. @24" O.C., Full   |
| 4,095                    | SCD   | <i>Seasonal color TBD</i>   | Same                    | 1 Gal. @12" O.C., Full   |
| 1,300                    | TZE   | <i>Tradescantia zebrina</i>   | Inch Plant              | 1 Gal. @12" O.C., Full   |
| 1,480                    | MNF   | <b>Misc. Native Fern Matrix to be selected from list below</b>      |                         |  |
|                          |       | <i>Adiantum capillus-veneris</i>                                    | Venus Hair Fern         | 3 Gal. @24" O.C. Yes   |
|                          |       | <i>Blechnum serrulatum</i>  | Swamp Fern              | 3 Gal. @24" O.C. Yes   |
|                          |       | <i>Dryopteris ludoviciana</i>                                       | Southern Shield Fern    | 3 Gal. @24" O.C. Yes   |
|                          |       | <i>Nephrolepis exaltata</i>   | Boston Fern             | 3 Gal. @24" O.C. Yes   |
| 80                       | MNG   | <b>Misc. Native Grass Matrix to be selected from list below</b>     |                         |  |
|                          | TFL   | <i>Tripsacum floridana</i>  | Florida Gama Grass      | 3 Gal. @24" O.C., Full Yes   |
|                          | NWF   | <i>Native Wild Flowers TBD</i>                                      | Same                    | 1 Gal. @12" O.C., Full Yes   |
|                          | TBD   | <i>Other Species TBD</i>  | TBD                     | 3 Gal. @24" O.C. Yes   |
| SOD                      |       |   |                         |  |
| QTY                      | SYM   | Botanical Name  | Common Name             | Specification  |
| 9,460                    | ZI    | <i>Zoysia japonica</i>  | Zoysia Grass            | Solid sod  |

## 4-6 Star Island - Proposed Plant List

Star Island, FL  
June 20, 2025

| UNDERSTORY PALMS  |     |   |                            |                                |           |  |
|-------------------|-----|---|----------------------------|--------------------------------|-----------|--|
| QTY               | SYM | Botanical Name  | Common Name                | Specification                  | FL Native |  |
| 4                 | KEL | <i>Kerriodoxa elegans</i>   | White Backed Palm          | 45 gal. 6'x6'. Botanics        |           |  |
| 39                | TRA | <i>Thrinax radiata</i>  | Florida Thatch Palm        | 11'-19' WD. Staggered Heights  | Yes       |  |
| 4                 | PHE | <i>Phelipodiox henryana</i>   | Same                       | 12' HT., 100 Gal., Botanics    |           |  |
| 132               | SRE | <i>Serenoa repens 'Silver Form'</i>   | Silver Saw Palmetto        | 6'x6'                          | Yes       |  |
| 3                 | MUP | <b>Misc. Understory Palms to be selected from list below</b>                            |                            |                                |           |  |
|                   |     | <i>Rhapis excelsa</i>   | Lady Palm                  | 6'-10' HT. x 6' SPR.           |           |  |
|                   |     | <i>Rhapis multifida</i>   | Finger Palm Palm           | 6'-10' HT. x 6' SPR.           |           |  |
|                   |     | <i>Areca triandra</i>   | Wild Areca Palm            | 6'-10' HT. x 6' SPR., Botanics |           |  |
|                   |     | <i>Cycasophila stauracantha</i>   | Rootspine Palm             | 6'-10' HT. x 6' SPR., Botanics |           |  |
|                   |     | <i>Psychaspermum schafferi</i>  | Same                       | 6'-10' HT. x 6' SPR.           |           |  |
| UNDERSTORY SHRUBS |     |   |                            |                                |           |  |
| QTY               | SYM | Botanical Name  | Common Name                | Specifications                 | FL Native |  |
| 4                 | CEL | <i>Codiaeum 'Eleanor Roosevelt'</i>   | Croton                     | 15 Gal.                        |           |  |
| 20                | CIC | <i>Chrysobalanus icaco 'Horizontal'</i>   | Cocoplum                   | 7 Gal., 24"-36" HT., Full      | Yes       |  |
| 267               | MIS | <b>Misc. Native Low Understory Shrubs to be selected from list below</b>                |                            |                                |           |  |
|                   |     | <i>Heliotropium angiospermum</i>  | Scorpion Tail              | 3-7 Gal., 24"-36" HT., Full    | Yes       |  |
|                   |     | <i>Psychotria ligustrifolia</i>   | Bahama Wild Coffee         | 7 Gal.                         | Yes       |  |
|                   |     | <i>Psychotria nervosa 'Little Psyche'</i>   | Dwarf Wild Coffee          | 7 Gal.                         | Yes       |  |
|                   |     | <i>Croton rosmarioides</i>  | Same                       | 7 Gal.                         | Yes       |  |
|                   |     | <i>Croton punctatus</i>   | Same                       | 7 Gal.                         | Yes       |  |
|                   |     | <i>Brunfelsia nitida</i>  | Lady of the Night          | 7 Gal.                         | Yes       |  |
|                   |     | <i>Brunfelsia manaca</i>  | Manaca                     | 7 Gal.                         | Yes       |  |
|                   |     | <i>Ficus squamosa</i>   | Same                       | 3 Gal.                         | Yes       |  |
|                   |     | <i>Piper sp.</i>  | Lanceleaf Piper            | 3 Gal.                         | Yes       |  |
| 124               | MUS | <b>Misc. Native Understory Shrubs to be selected from list below</b>                    |                            |                                |           |  |
|                   | AES | <i>Ardisia escafontioides</i>   | Mariberry                  | 45 Gal.                        | Yes       |  |
|                   | CWI | <i>Canella winterana</i>  | Wild Cinnamon Bark         | 45 Gal.                        | Yes       |  |
|                   | ERH | <i>Eugenia rhombica</i>   | Red Stopper                | 45 Gal.                        | Yes       |  |
|                   | ECD | <i>Eugenia confusa</i>  | Redberry Stopper           | 45 Gal.                        | Yes       |  |
|                   | MFR | <i>Myrcianthes fragrans</i>   | Simpson Stopper            | 45 Gal.                        | Yes       |  |
|                   | EFD | <i>Eugenia foetida</i>  | Spanish Stopper            | 45 Gal.                        | Yes       |  |
|                   | QIA | <i>Quadrifida jamaicensis</i>   | Jamaican Caper             | 7 Gal.                         | Yes       |  |
|                   | DLA | <i>Drypetes lateriflora</i>   | Milk Bark                  | 7 Gal.                         | Yes       |  |
| ACCENTS           |     |   |                            |                                |           |  |
| QTY               | SYM | Botanical Name  | Common Name                | Specification                  | FL Native |  |
| 50                | MDE | <i>Morsetia deliciosa</i>   | Swiss Cheese Vine          | 7 Gal.                         |           |  |
| 129               | PRD | <i>Philodendron 'Raja Congo'</i>  | Red Congo Philodendron     | 7 Gal.                         |           |  |
| 45                | PPL | <i>Philodendron planum</i>  | Same                       | 7 Gal.                         |           |  |
| 102               | PWE | <i>Philodendron 'Weeks Red Hybrid'</i>  | Same                       | 7 Gal.                         |           |  |
| 145               | PBU | <i>Philodendron 'Burlie Marx'</i>   | 'Burlie Marx' Philodendron | 3 Gal. @24" O.C.               |           |  |
| 5                 | ZFL | <i>Zamia floridana</i>  | Coontie                    | 3-7 Gal., 24"-36" HT., Full    | Yes       |  |
| 12                | MSC | <b>Misc. Specimen Cycads to be selected from list below</b>                             |                            |                                |           |  |
|                   |     | <i>Ceratozamia hildebrandtii</i>  | Same                       | 6'x6'                          |           |  |
|                   |     | <i>Ceratozamia mexicana</i>   | Mexican Horncone           | 6'x6'                          |           |  |
|                   |     | <i>Olea mexicana</i>  | Cycad                      | 6'x6'                          |           |  |
|                   |     | <i>Olea spinulosa</i>   | Mexican Cycad              | 6'x6'                          |           |  |
|                   |     | <i>Enecephalartos ferox</i>   | Same                       | 6'x6'                          |           |  |
|                   |     | <i>Enecephalartos gratus</i>  | Same                       | 6'x6'                          |           |  |
|                   |     | <i>Enecephalartos hildebrandtii</i>   | Same                       | 6'x6'                          |           |  |
| 39                | MTA | <b>Misc. Flowering Tropical Understory Accent Plants to be selected from list below</b> |                            |                                |           |  |
|                   |     | <i>Alpinia purpurata</i>  | Red Ginger                 | 15 Gal.                        |           |  |
|                   |     | <i>Alpinia purpurata 'Pink'</i>   | Ginger                     | 7 Gal.                         |           |  |
|                   |     | <i>Heliconia sp.</i>  | False Bird of Paradise     | 15 Gal.                        |           |  |
|                   |     | <i>Alpinia zerumbet</i>   | Shell Ginger               | 15 Gal.                        |           |  |
|                   |     | <i>Crinum asiaticum</i>   | Giant Crinum Lily          | 15 Gal.                        |           |  |
| GROUNDCOVERS      |     |   |                            |                                |           |  |
| QTY               | SYM | Botanical Name  | Common Name                | Specification                  | FL Native |  |
| 11,200            | QIA | <i>Ophiopogon japonicus 'nana'</i>  | Dwarf Mondo Grass          | 4" pot. @6" O.C.               |           |  |
| 855               | BRE | <i>Barleria repens</i>  | Coral Creeper              | 1 Gal. @12" O.C., Full         |           |  |
| 880               | PGL | <i>Pilea glauca</i>   | Same                       | 1" pot. @8" O.C.               |           |  |
| 74                | PAN | <i>Pitcairnia angustifolia</i>  | Pina cortadora             | 3 Gal. @24" O.C., Full         |           |  |
| 4,095             | SCD | <i>Seasonal color TBD</i>   | Same                       | 1 Gal. @12" O.C., Full         |           |  |
| 1,300             | TZE | <i>Tradescantia zebrina</i>   | Inch Plant                 | 1 Gal. @12" O.C., Full         |           |  |
| 1,480             | MNF | <b>Misc. Native Fern Matrix to be selected from list below</b>                          |                            |                                |           |  |
|                   |     | <i>Adiantum capillus-veneris</i>  | Venus Hair Fern            | 3 Gal. @24" O.C.               | Yes       |  |
|                   |     | <i>Blechnum serrulatum</i>  | Swamp Fern                 | 3 Gal. @24" O.C.               | Yes       |  |
|                   |     | <i>Dryopteris ludoviciana</i>   | Southern Shield Fern       | 3 Gal. @24" O.C.               | Yes       |  |
|                   |     | <i>Nephrolepis exaltata</i>   | Boston Fern                | 3 Gal. @24" O.C.               | Yes       |  |
| 80                | MNG | <b>Misc. Native Grass Matrix to be selected from list below</b>                         |                            |                                |           |  |
|                   | TFL | <i>Tripsacum floridana</i>  | Florida Gama Grass         | 3 Gal. @24" O.C., Full         | Yes       |  |
|                   | NWF | <i>Native Wild Flowers TBD</i>  | Same                       | 1 Gal. @12" O.C., Full         | Yes       |  |
|                   | TBD | <i>Other Species TBD</i>  | TBD                        | 3 Gal. @24" O.C.               | Yes       |  |
| SOD               |     |   |                            |                                |           |  |
| QTY               | SYM | Botanical Name  | Common Name                | Specification                  | FL Native |  |
| 9,460             | ZI  | <i>Zoysia japonica</i>  | Zoysia Grass               | Solid sod                      |           |  |

- In addition to the above plant list and specifications there is to be an additional \$30,000.00 wholesale plant allowance - Landscape Architect to select accent specimens during nursery visits.
- Landscape contractor to provide photographs of all trees & palms for Landscape Architect's approval with bid.
- Landscape contractor to coordinate installation with Landscape Architect at least 1 month prior to installation date.
- All plants to be laid out on site by Landscape Architect.

| Tree Mitigation Chart   |    |
|---|----|
| Total Tree D.B.H. Removed Requiring Mitigation (inches)   | 35 |
| Trees Required to complete Mitigation Requirement (16" HT. x 8" SPR., 4" DBH. minimum)                          | 6  |
| Total Palms Removed Requiring Mitigation Tree replacement on a 1:1 basis (12' HT. x 6" SPR., 2" D.B.H. minimum) | 31 |
| Proposed Trees with 16' HT. x 8" SPR., 4" D.B.H. (minimum) specifications                                       | 14 |
| Proposed Palms with 16' HT., 6" D.B.H. (minimum) specifications   | 36 |
| Required minimum number of Tree Species (1-10 replacement Trees)  | 2  |
| Proposed number of Tree Species   | 12 |

| CITY OF MIAMI BEACH LANDSCAPE LEGEND   |                  |           |            |       |      |
|--|------------------|-----------|------------|-------|------|
| INFORMATION REQUIRED TO BE PERMANENTLY AFFIXED TO PLANS  |                  |           |            |       |      |
| ZONING DISTRICT  | RS-1             | LOT AREA  | 120,000 SF | ACRES | 2.75 |
| OPEN SPACE   | REQUIRED/ALLOWED | PROVIDED  |            |       |      |
| A. SQUARE FEET OF REQUIRED OPEN SPACE AS INDICATED ON SITE PLAN. LOT AREA = 120,000 S.F. X 50% = 60,000 S.F. | 60,000 SF        | 77,438 SF |            |       |      |
| B. SQUARE FEET OF PARKING LOT OPEN SPACE REQUIRED AS INDICATED ON SITE PLAN:                                 | N/A              | N/A       |            |       |      |
| NUMBER OF PARKING SPACES _____ X 10 S.F. PARKING SPACE =   | N/A              | N/A       |            |       |      |
| C. TOTAL SQUARE FEET OF LANDSCAPED OPEN SPACE REQUIRED: A+B=   | 60,000 SF        | 77,438 SF |            |       |      |
| LAWN AREA CALCULATION  |                  |           |            |       |      |
| A. SQUARE FEET OF LANDSCAPED OPEN SPACE REQUIRED   | 60,000 SF        |           |            |       |      |
| B. MAXIMUM LAWN AREA (SOD) PERMITTED= 50% X 60,000 S.F. = 30,000 SF  | 30,000 SF        | 9,460 SF  |            |       |      |
| TREES  |                  |           |            |       |      |
| A. TREES REQUIRED PER NET LOT ACRE   |                  |           |            |       |      |
| TREES ON FRONT YARD  | 2                | 9         |            |       |      |
| TREES ON BACK YARD   | 3                | 7         |            |       |      |
| TREES IN EXCESS OF 6,000 SF LOT (1 TREE X 1,000 SF)  | 114              | 54        |            |       |      |
| TOTAL TREES ON LOT   | 119              | *178      |            |       |      |































