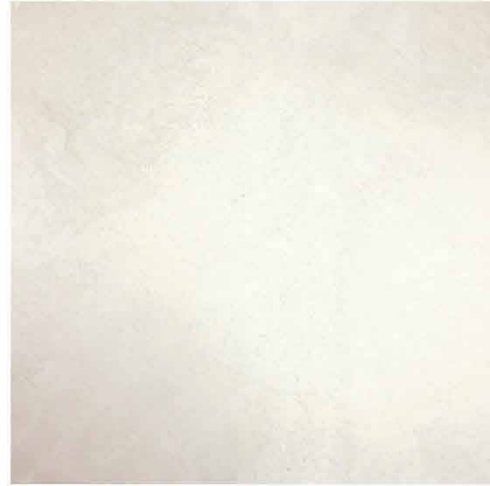


FOR REFERENCE ONLY DRB22-0859 - APPROVED MATERIAL PALETTE



PS1
LIME PLASTER STUCCO FINISH



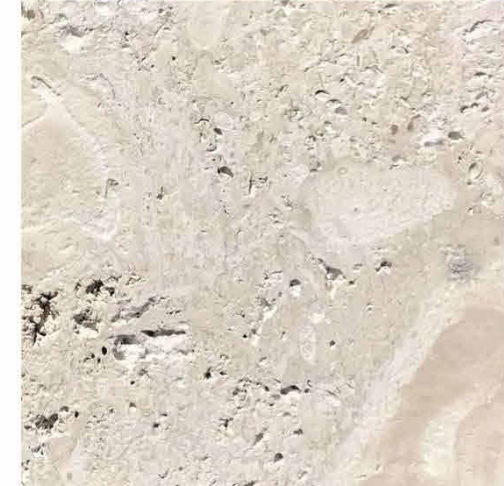
MT1
METAL MULLIONS, DOORS, COLUMN
COVERS - KYNAR FINISH



ST1
STONE CLADDING-
HONED AND FILLED



ST2
STONE CLADDING-
ROUGH FACE



**UNDERSTORY SAND SET PAVERS-
CORALSTONE SELECT WHITE**



GL1
IMPACT GLAZING-
CLEAR



GL2
IMPACT GLASS HANDRAIL-
CLEAR, RADIUSED CORNERS



WD1
EXTERIOR ALUMINUM CLADDING-
POWDERCOATED PTF FINISH



WD2
EXTERIOR ALUMINUM SCREEN-
POWDERCOATED PTF FINISH, 50% OPEN



**DRIVEWAY SAND SET PAVERS-
CORALSTONE SELECT WHITE**



Robert M Moehring
2025.07.12 15:14:18
-04'00'

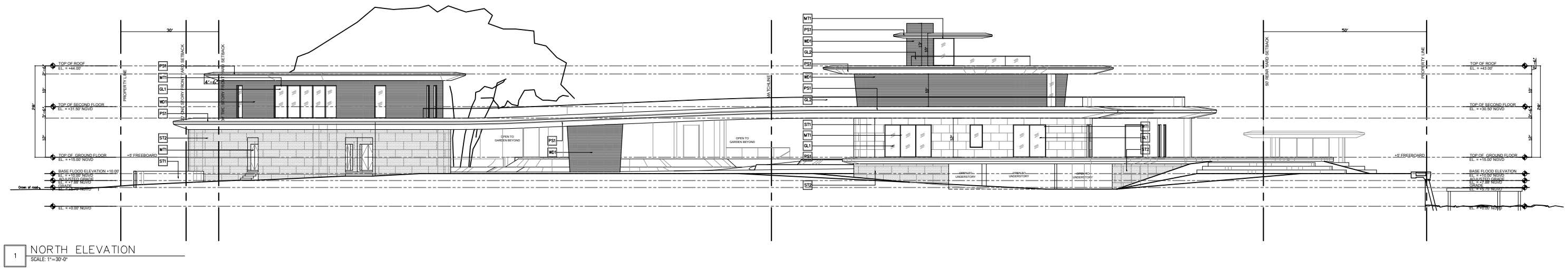
Scale

7/11/2025 23:50:54

Project # 25002

MATERIAL
PALETTE

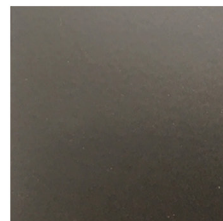
A-3.0



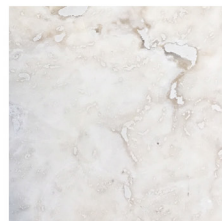
1 NORTH ELEVATION
SCALE: 1"=30'-0"



PS1
LIME PLASTER STUCCO FINISH



MT1
METAL MULLIONS, DOORS, COLUMN COVERS - KYNAR FINISH



ST1
STONE CLADDING - HONED AND FILLED



ST2
STONE CLADDING - ROUGH FACE



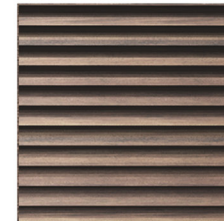
GL1
IMPACT GLAZING - CLEAR



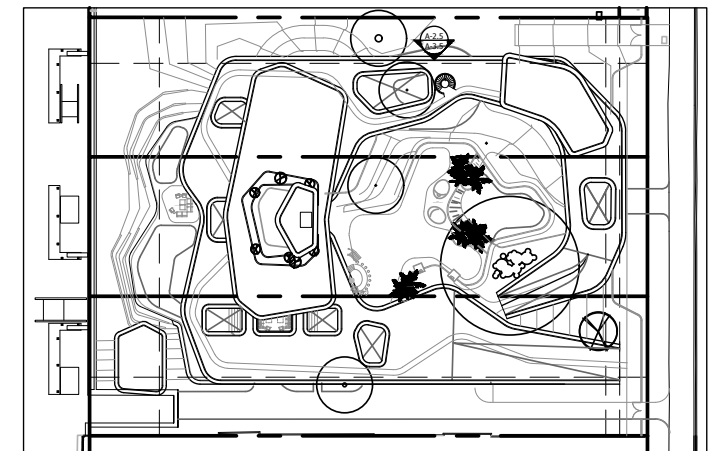
GL2
IMPACT GLASS HANDRAIL - CLEAR, RADIUSED CORNERS



WD1
EXTERIOR ALUMINUM CLADDING - POWDERCOATED PTF FINISH



WD2
EXTERIOR ALUMINUM SCREEN - POWDERCOATED PTF FINISH, 50% OPEN



ELEVATION - REQUEST FOR MODIFICATION DRB22-0859 - SEEKING 31' OF TOTAL BUILDING HEIGHT AS OF RIGHT UNDER CURRENT ZONING CODE

KODA+DOMO
ARCHITECTURE + DESIGN
7500 NE 4th Ct #100
Miami, FL 33138
info@kodamiami.com
305.359.3669

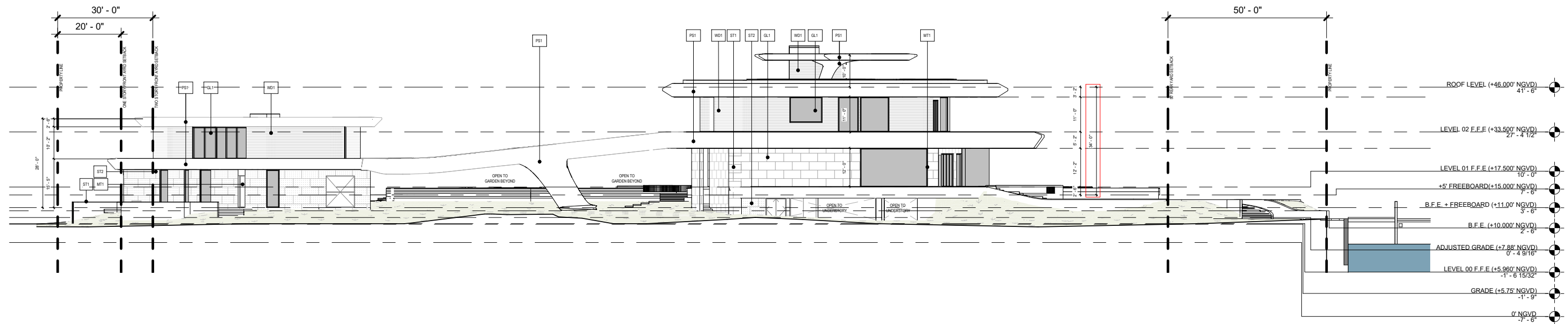
456 STAR ISLAND
4,5,6 STAR ISLAND DRIVE, MIAMI BEACH,
FL 33139
JULY 13TH 2025 - DRB FINAL SUBMITTAL



Robert M Moehring
2025.07.12
15:15:21 -04'00'

Scale	As indicated
7/11/2025 23:51:02	
Project #	25002

ELEVATION - NORTH
A-3.1



PS1
LIME PLASTER STUCCO FINISH



MT1
METAL MULLIONS, DOORS, COLUMN COVERS - KYNAR FINISH



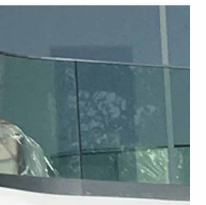
ST1
STONE CLADDING - HONED AND FILLED



ST2
STONE CLADDING - ROUGH FACE



GL1
IMPACT GLAZING - CLEAR



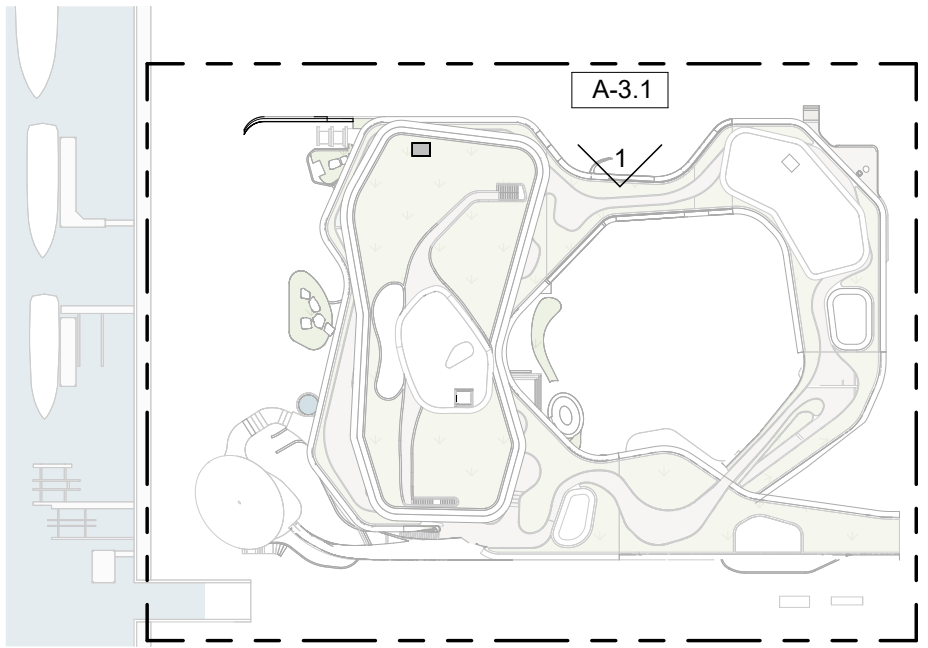
GL2
IMPACT GLASS HANDRAIL - CLEAR, RADIUSSED CORNERS

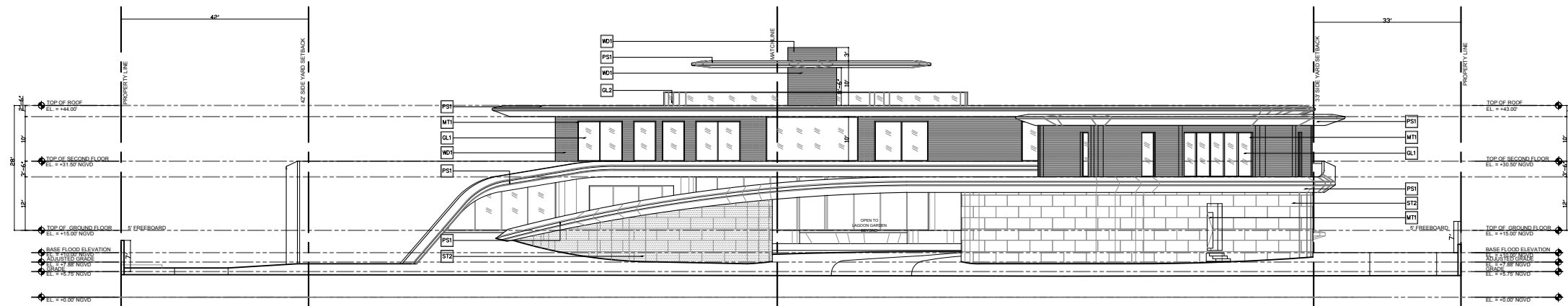


WD1
EXTERIOR ALUMINUM CLADDING - POWDERCOATED PTF FINISH



WD2
EXTERIOR ALUMINUM SCREEN - POWDERCOATED PTF FINISH, 50% OPEN

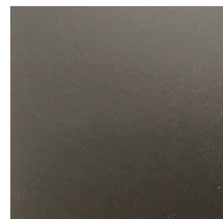




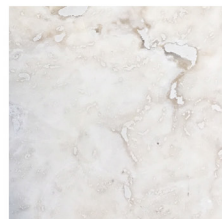
1 EAST ELEVATION
SCALE: 1"=30'-0"



PS1
LIME PLASTER STUCCO FINISH



MT1
METAL MULLIONS, DOORS, COLUMN COVERS - KYNAR FINISH



ST1
STONE CLADDING - HONED AND FILLED



ST2
STONE CLADDING - ROUGH FACE



GL1
IMPACT GLAZING - CLEAR



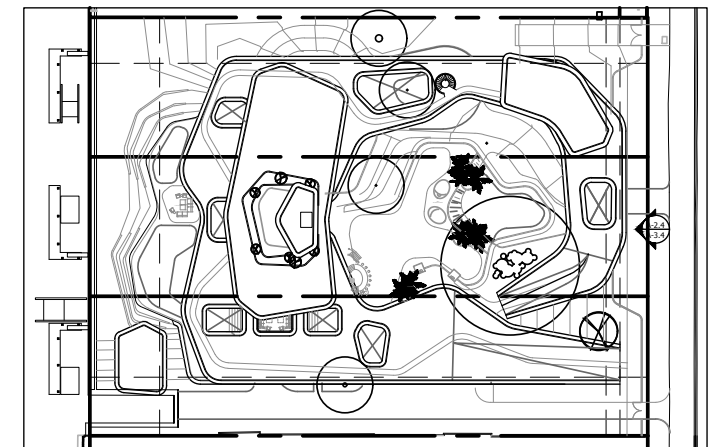
GL2
IMPACT GLASS HANDRAIL - CLEAR, RADIUSED CORNERS



WD1
EXTERIOR ALUMINUM CLADDING - POWDERCOATED PTF FINISH



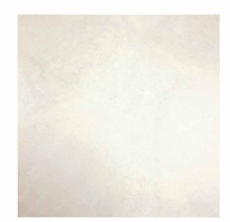
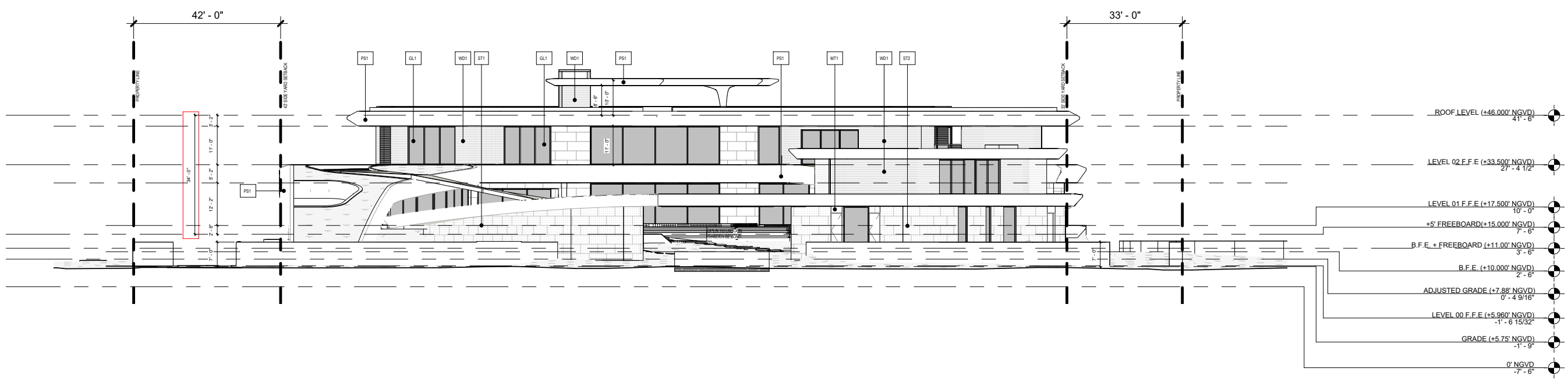
WD2
EXTERIOR ALUMINUM SCREEN - POWDERCOATED PTF FINISH, 50% OPEN



ELEVATION - REQUEST FOR MODIFICATION DRB22-0859 - SEEKING 31' OF TOTAL BUILDING HEIGHT AS OF RIGHT UNDER CURRENT ZONING CODE

KODA+DOMO
ARCHITECTURE + DESIGN
7500 NE 4th Ct #100
Miami, FL 33138
info@kodamiami.com
305.359.3669

456 STAR ISLAND
4,5,6 STAR ISLAND DRIVE, MIAMI BEACH,
FL 33139
JULY 13TH 2025 - DRB FINAL SUBMITTAL



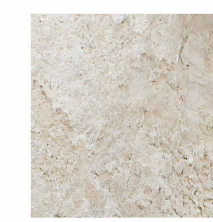
PS1
LIME PLASTER STUCCO FINISH



MT1
METAL MULLIONS, DOORS, COLUMN COVERS - KYNAR FINISH



ST1
STONE CLADDING - HONED AND FILLED



ST2
STONE CLADDING - ROUGH FACE



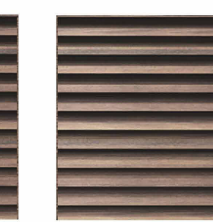
GL1
IMPACT GLAZING - CLEAR



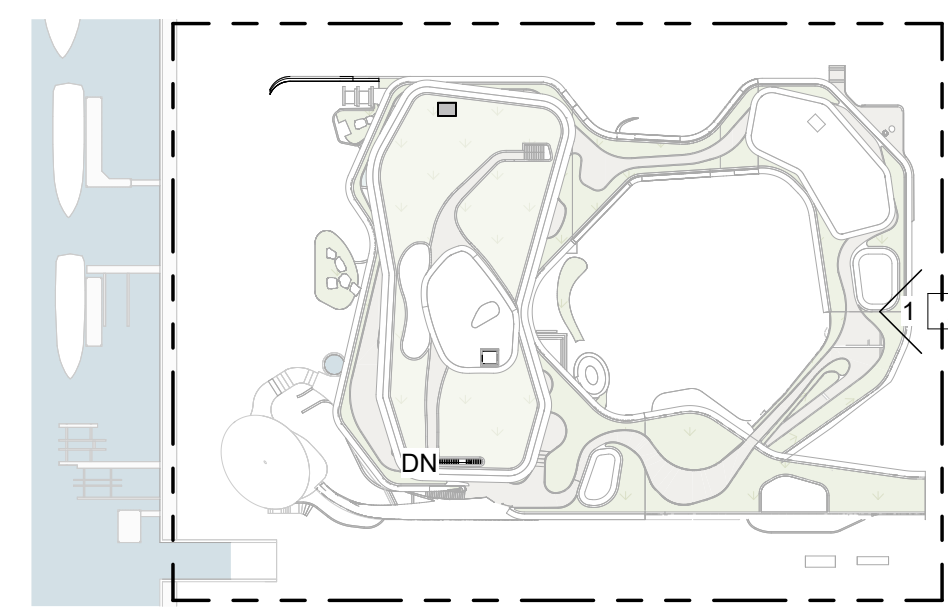
GL2
IMPACT GLASS HANDRAIL - CLEAR, RADIUS CORNERS



WD1
EXTERIOR ALUMINUM CLADDING - POWDERCOATED PTF FINISH



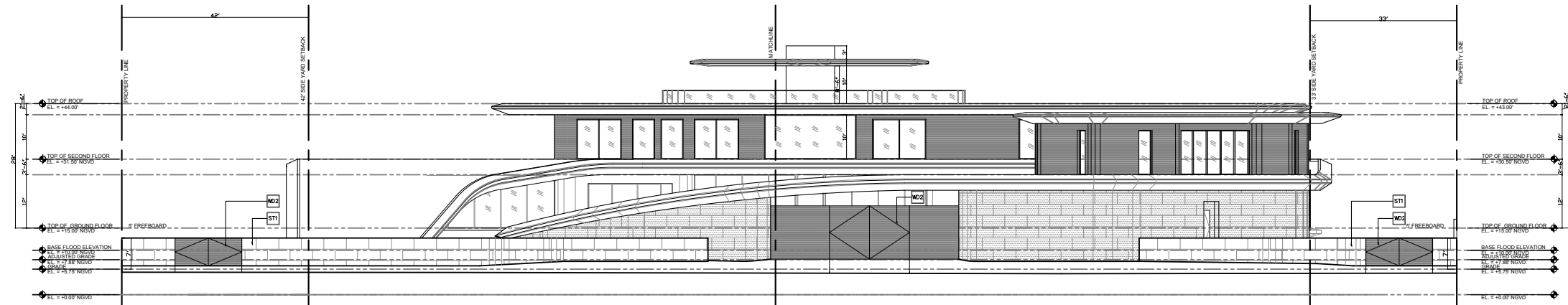
WD2
EXTERIOR ALUMINUM SCREEN - POWDERCOATED PTF FINISH, 50% OPEN



Robert M Moehring
2025.07.12
15:16:59 -04'00'

Scale	As indicated
7/11/2025 23:51:12	
Project #	25002

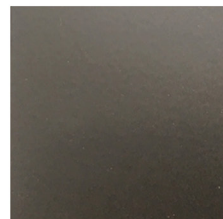
ELEVATION - EAST
A-3.2



1 EAST ELEVATION
SCALE: 1"=30'-0"



PS1
LIME PLASTER STUCCO FINISH



MT1
METAL MULLIONS, DOORS, COLUMN
COVERS - KYNAR FINISH



ST1
STONE CLADDING-
HONED AND FILLED



ST2
STONE CLADDING-
ROUGH FACE



GL1
IMPACT GLAZING-
CLEAR



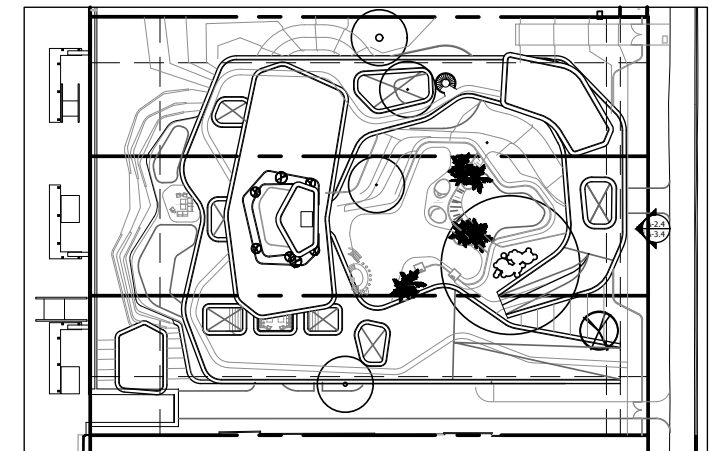
GL2
IMPACT GLASS HANDRAIL-
CLEAR, RADIUSED CORNERS



WD1
EXTERIOR ALUMINUM CLADDING-
POWDERCOATED PTF FINISH



WD2
EXTERIOR ALUMINUM SCREEN-
POWDERCOATED PTF FINISH, 50% OPEN



ELEVATION - REQUEST FOR MODIFICATION DRB22-0859 - SEEKING 31' OF TOTAL BUILDING HEIGHT AS OF RIGHT UNDER CURRENT ZONING CODE

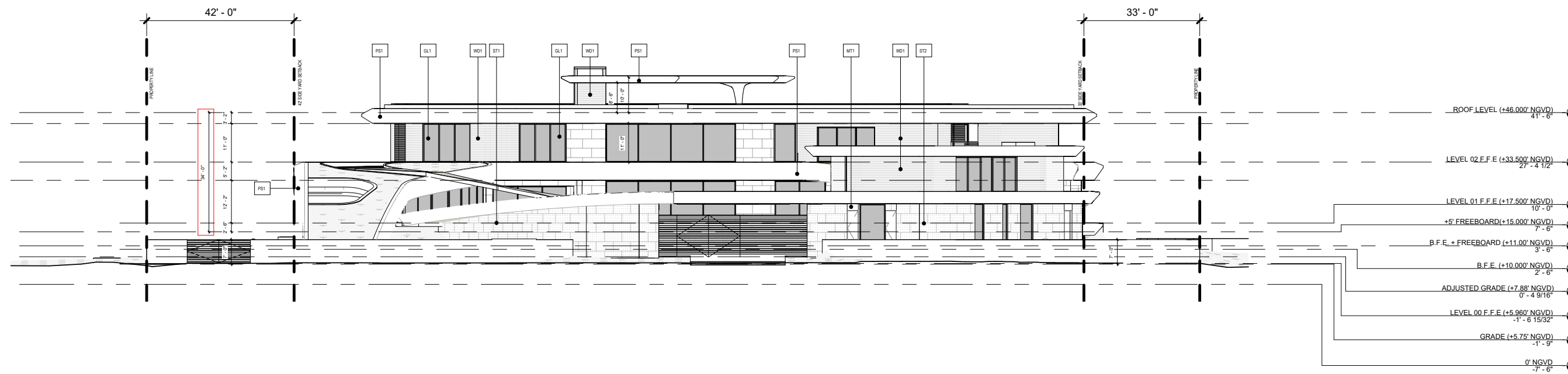
KODA+DOMO
ARCHITECTURE + DESIGN
7500 NE 4th Ct #100
Miami, FL 33138
info@kodamiami.com
305.359.3669

456 STAR ISLAND
4,5,6 STAR ISLAND DRIVE, MIAMI BEACH,
FL 33139
JULY 13TH 2025 - DRB FINAL SUBMITTAL

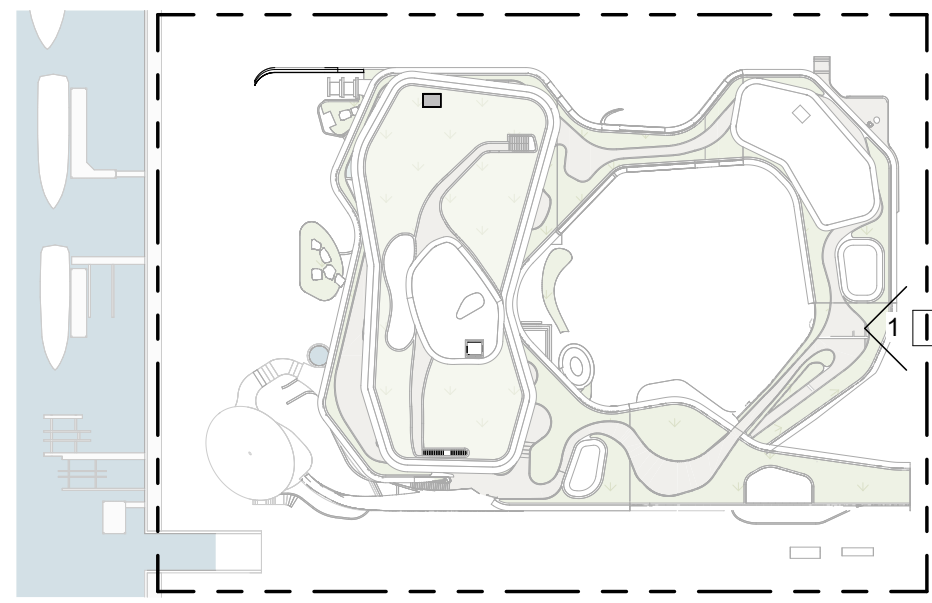
Robert M
Moehring
2025.07.1
2
15:18:29
-04'00'

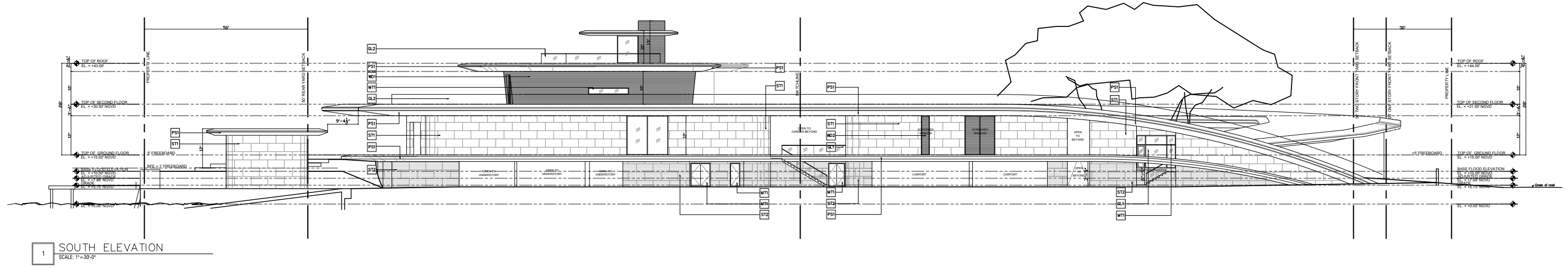
Scale	As indicated
7/11/2025 23:51:21	
Project #	25002

ELEVATION -
EAST -
PROPERTY
WALL
A-3.3



-  **PS1**
LIME PLASTER STUCCO FINISH
-  **MT1**
METAL MULLIONS, DOORS, COLUMN
COVERS - KYNAR FINISH
-  **ST1**
STONE CLADDING-
HONED AND FILLED
-  **ST2**
STONE CLADDING-
ROUGH FACE
-  **GL1**
IMPACT GLAZING-
CLEAR
-  **GL2**
IMPACT GLASS HANDRAIL-
CLEAR, RADIUSED CORNERS
-  **WD1**
EXTERIOR ALUMINUM CLADDING-
POWDERCOATED PTF FINISH
-  **WD2**
EXTERIOR ALUMINUM SCREEN-
POWDERCOATED PTF FINISH, 50% OPEN

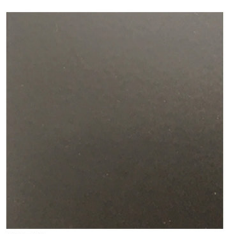




1 SOUTH ELEVATION
SCALE: 1"=30'-0"



PS1
LIME PLASTER STUCCO FINISH



MT1
METAL MULLIONS, DOORS, COLUMN COVERS - KYNAR FINISH



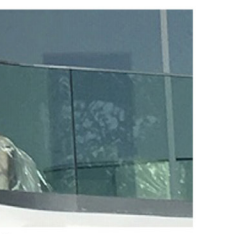
ST1
STONE CLADDING - HONED AND FILLED



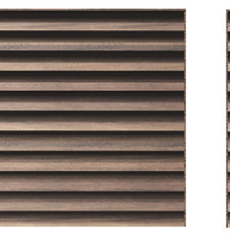
ST2
STONE CLADDING - ROUGH FACE



GL1
IMPACT GLAZING - CLEAR



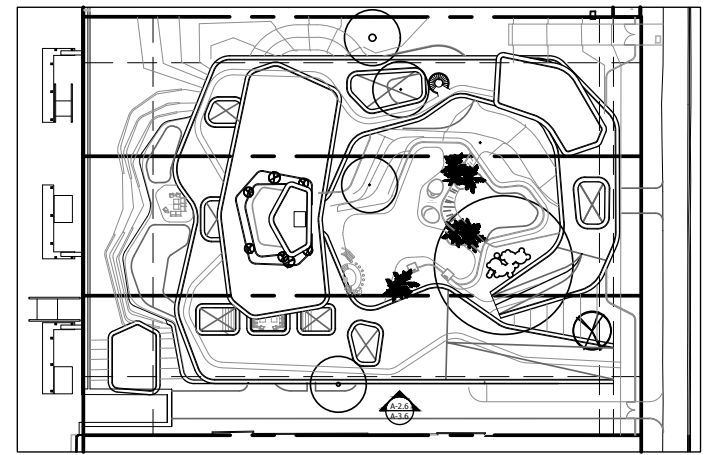
GL2
IMPACT GLASS HANDRAIL - CLEAR, RADIUSED CORNERS



WD1
EXTERIOR ALUMINUM CLADDING - POWDERCOATED PTF FINISH



WD2
EXTERIOR ALUMINUM SCREEN - POWDERCOATED PTF FINISH, 50% OPEN



ELEVATION - REQUEST FOR MODIFICATION DRB22-0859 - SEEKING 31' OF TOTAL BUILDING HEIGHT AS OF RIGHT UNDER CURRENT ZONING CODE

KODA+DOMO
ARCHITECTURE + DESIGN
7500 NE 4th Ct #100
Miami, FL 33138
info@kodamiami.com
305.359.3669

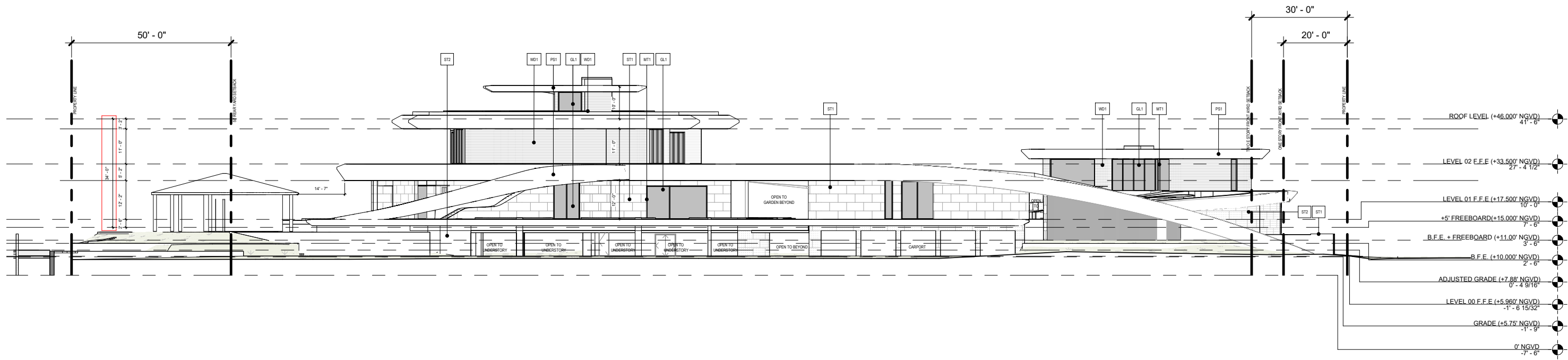
456 STAR ISLAND
4,5,6 STAR ISLAND DRIVE, MIAMI BEACH,
FL 33139
JULY 13TH 2025 - DRB FINAL SUBMITTAL



Robert M Moehring
2025.07.12 15:19:54
-04'00'

Scale	As indicated
	7/11/2025 23:51:30
Project #	25002

ELEVATION - SOUTH
A-3.4



PS1
LIME PLASTER STUCCO FINISH



MT1
METAL MULLIONS, DOORS, COLUMN COVERS - KYNAR FINISH



ST1
STONE CLADDING - HONED AND FILLED



ST2
STONE CLADDING - ROUGH FACE



GL1
IMPACT GLAZING - CLEAR



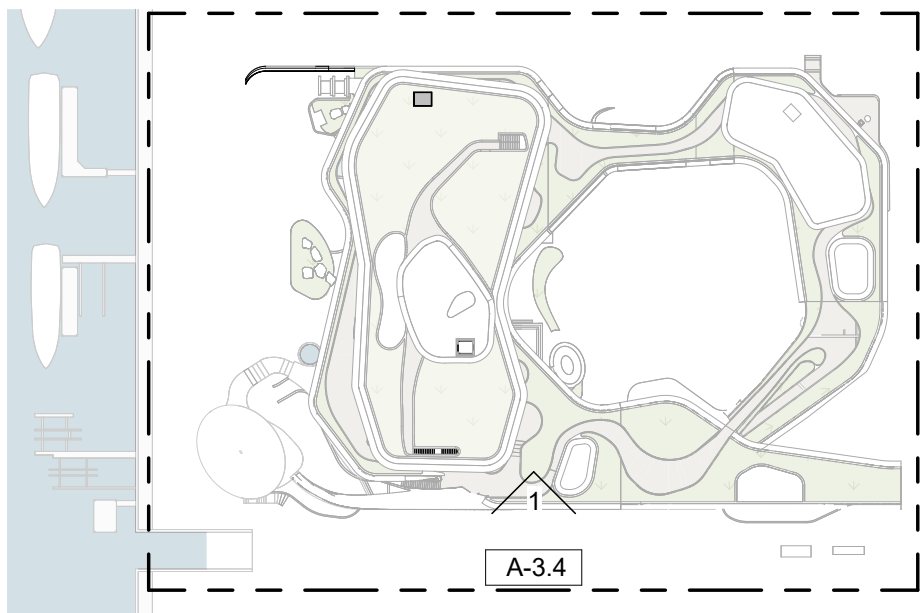
GL2
IMPACT GLASS HANDRAIL - CLEAR, RADIUSED CORNERS



WD1
EXTERIOR ALUMINUM CLADDING - POWDERCOATED PTF FINISH



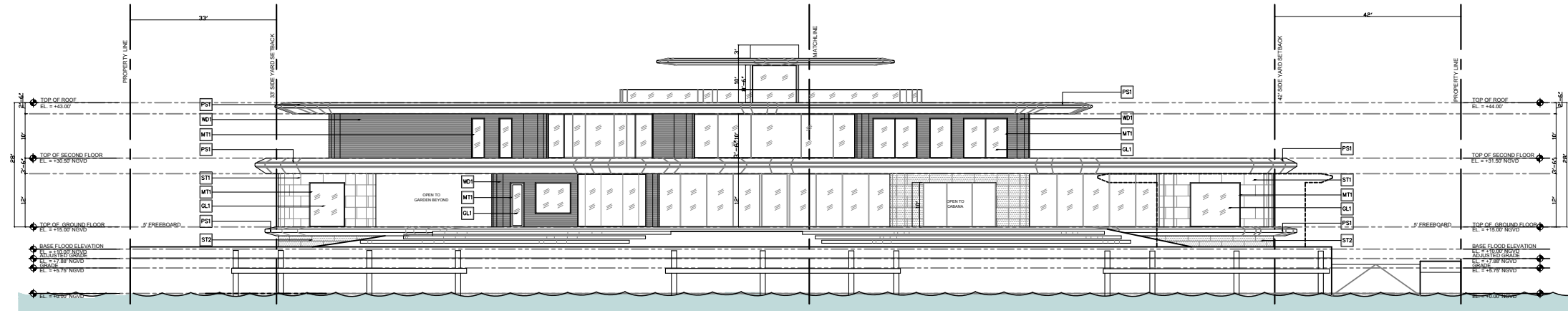
WD2
EXTERIOR ALUMINUM SCREEN - POWDERCOATED PTF FINISH, 50% OPEN



1

SOUTH - ELEVATION

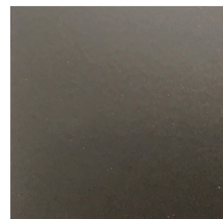
1/32" = 1'-0"



1 WEST ELEVATION



PS1
LIME PLASTER STUCCO FINISH



MT1
METAL MULLIONS, DOORS, COLUMN COVERS - KYNAR FINISH



ST1
STONE CLADDING - HONED AND FILLED



ST2
STONE CLADDING - ROUGH FACE



GL1
IMPACT GLAZING - CLEAR



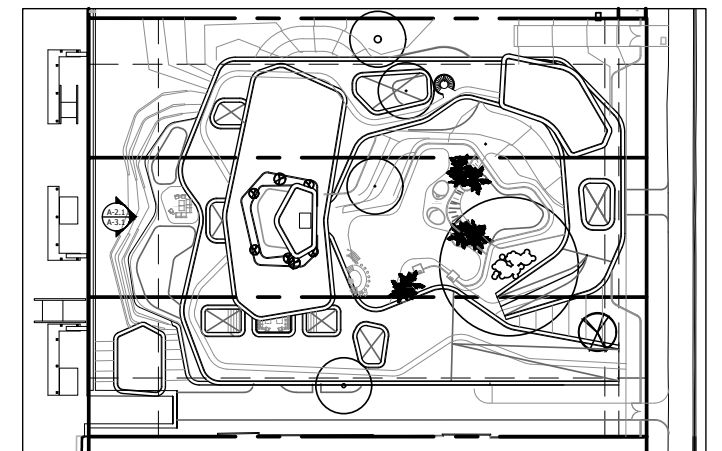
GL2
IMPACT GLASS HANDRAIL - CLEAR, RADIUSED CORNERS



WD1
EXTERIOR ALUMINUM CLADDING - POWDERCOATED PTF FINISH



WD2
EXTERIOR ALUMINUM SCREEN - POWDERCOATED PTF FINISH, 50% OPEN



ELEVATION - REQUEST FOR MODIFICATION DRB22-0859 - SEEKING 31' OF TOTAL BUILDING HEIGHT AS OF RIGHT UNDER CURRENT ZONING CODE

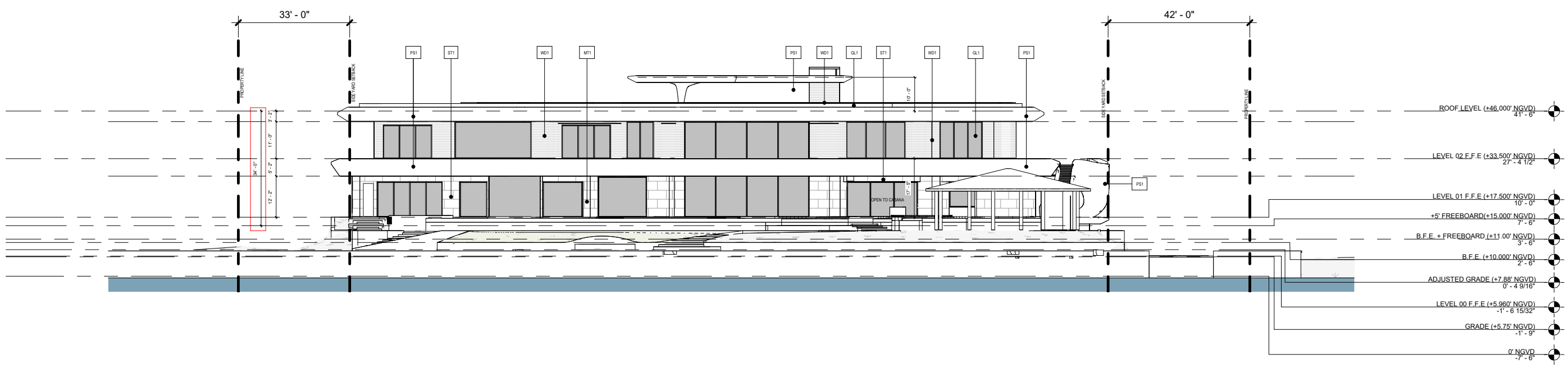
KODA+DOMO
ARCHITECTURE + DESIGN
7500 NE 4th Ct #100
Miami, FL 33138
info@kodamiami.com
305.359.3669

456 STAR ISLAND
4,5,6 STAR ISLAND DRIVE, MIAMI BEACH,
FL 33139
JULY 13TH 2025 - DRB FINAL SUBMITTAL

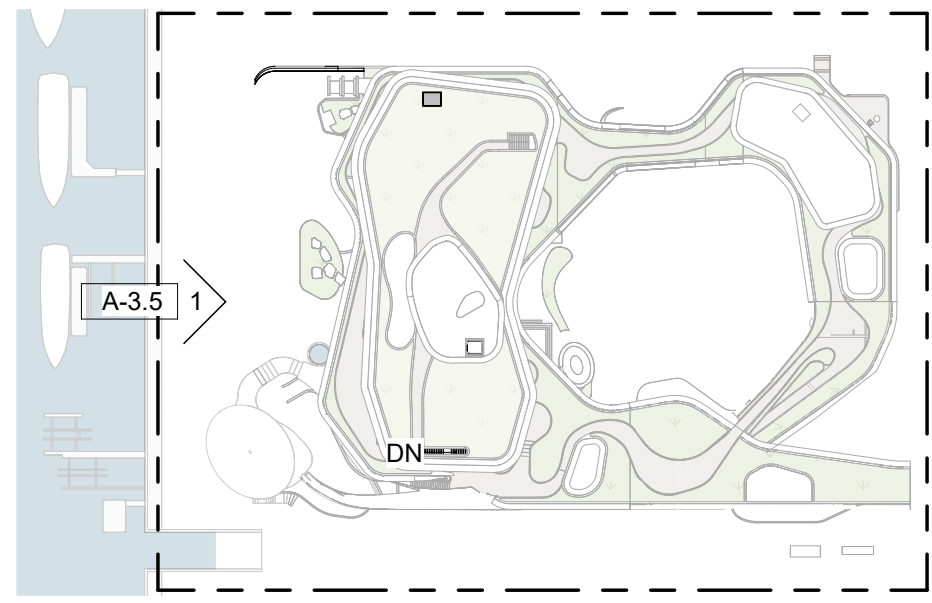
Robert M Moehring
2025.07.12
15:24:25
-04'00'

Scale As indicated
7/11/2025 23:51:36
Project # 25002

ELEVATION - WEST
A-3.5



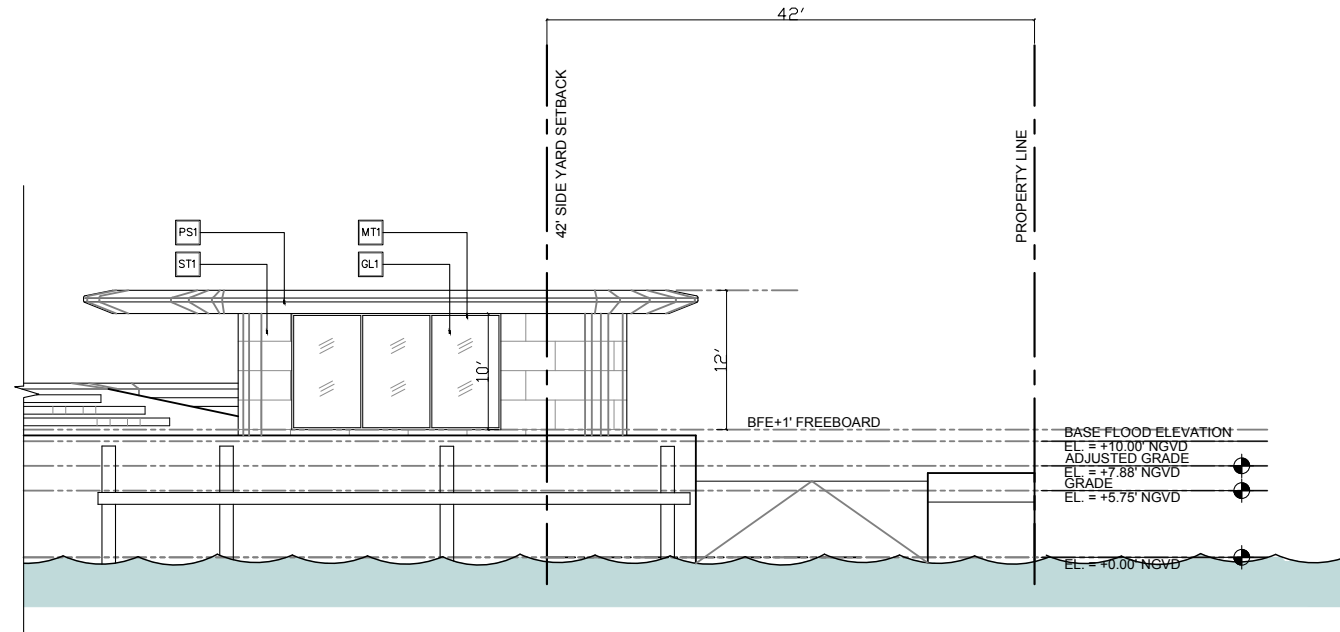
-  **PS1**
LIME PLASTER STUCCO FINISH
-  **MT1**
METAL MULLIONS, DOORS, COLUMN COVERS - KYNAR FINISH
-  **ST1**
STONE CLADDING - HONED AND FILLED
-  **ST2**
STONE CLADDING - ROUGH FACE
-  **GL1**
IMPACT GLAZING - CLEAR
-  **GL2**
IMPACT GLASS HANDRAIL - CLEAR, RADIUS CORNERS
-  **WD1**
EXTERIOR ALUMINUM CLADDING - POWDERCOATED PTF FINISH
-  **WD2**
EXTERIOR ALUMINUM SCREEN - POWDERCOATED PTF FINISH, 50% OPEN



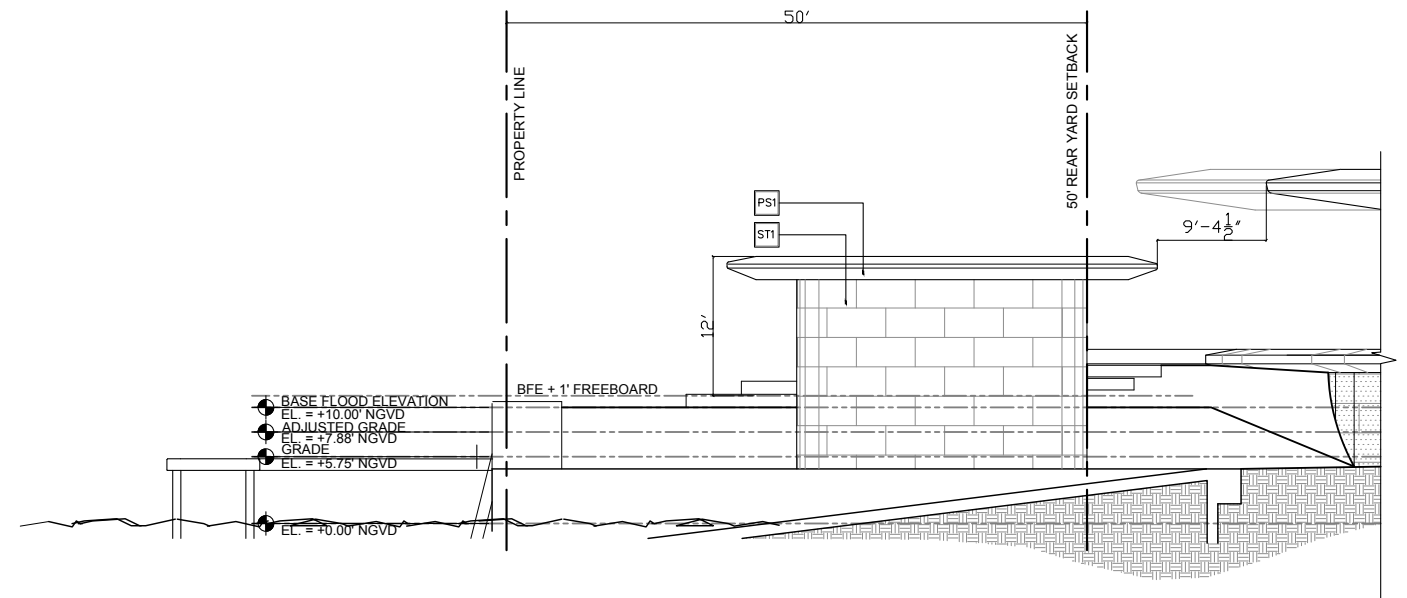
1

WEST - ELEVATION

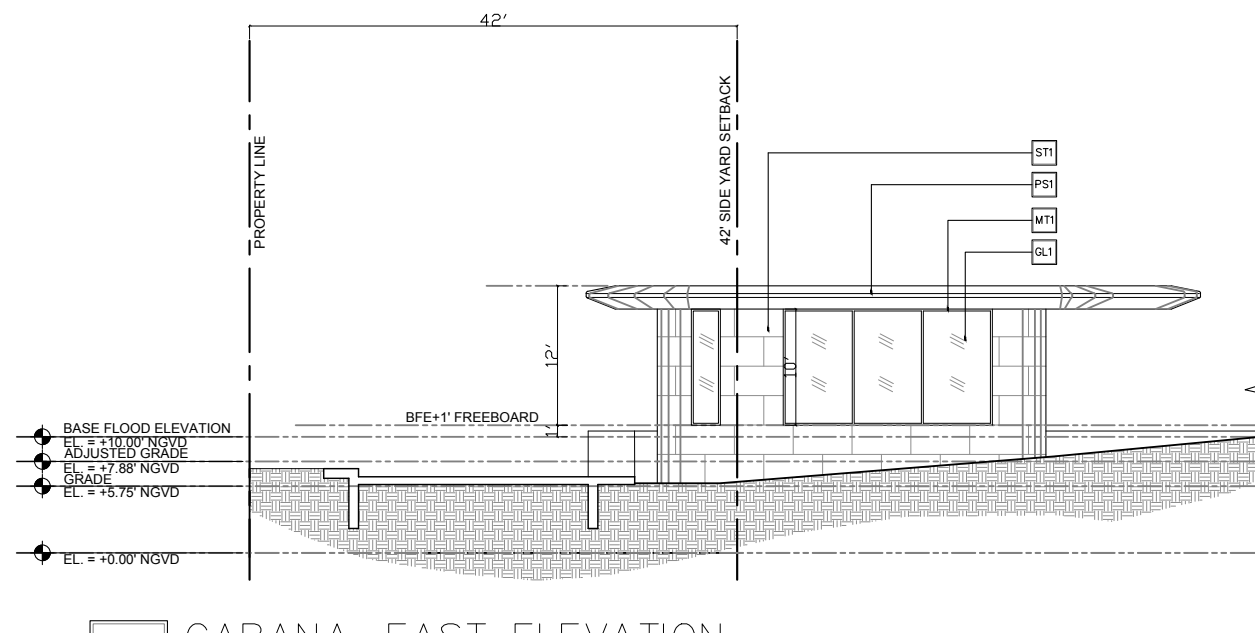
1/32" = 1'-0"



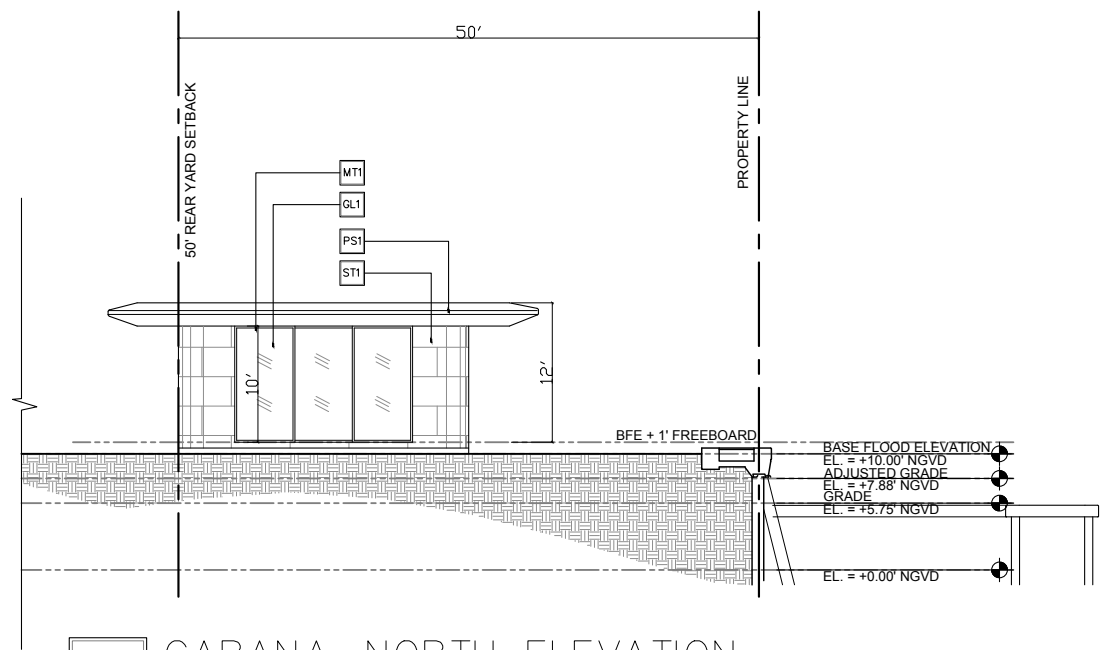
1 CABANA—WEST ELEVATION
SCALE: 1/16"=1'-0"



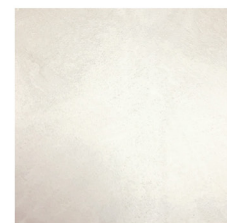
3 CABANA—SOUTH ELEVATION
SCALE: 1/16"=1'-0"



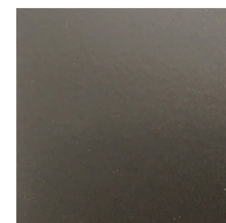
2 CABANA—EAST ELEVATION
SCALE: 1/16"=1'-0"



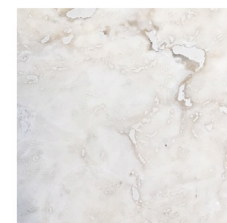
4 CABANA—NORTH ELEVATION
SCALE: 1/16"=1'-0"



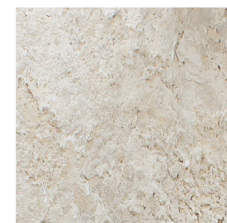
PS1
LIME PLASTER STUCCO FINISH



MT1
METAL MULLIONS, DOORS, COLUMN
COVERS - KYNAR FINISH



ST1
STONE CLADDING-
HONED AND FILLED



ST2
STONE CLADDING-
ROUGH FACE



GL1
IMPACT GLAZING-
CLEAR



GL2
IMPACT GLASS HANDRAIL-
CLEAR, RADIUSED CORNERS



WD1
EXTERIOR ALUMINUM CLADDING-
POWDERCOATED PTF FINISH



WD2
EXTERIOR ALUMINUM SCREEN-
POWDERCOATED PTF FINISH, 50% OPEN



Robert M
Moehring
2025.07.12
15:25:03 -04'00"

2025 PROPOSAL - ELEVATION - ACCESSORY STRUCT.



Robert M Moehring
2025.07.12 15:25:38
-04'00'

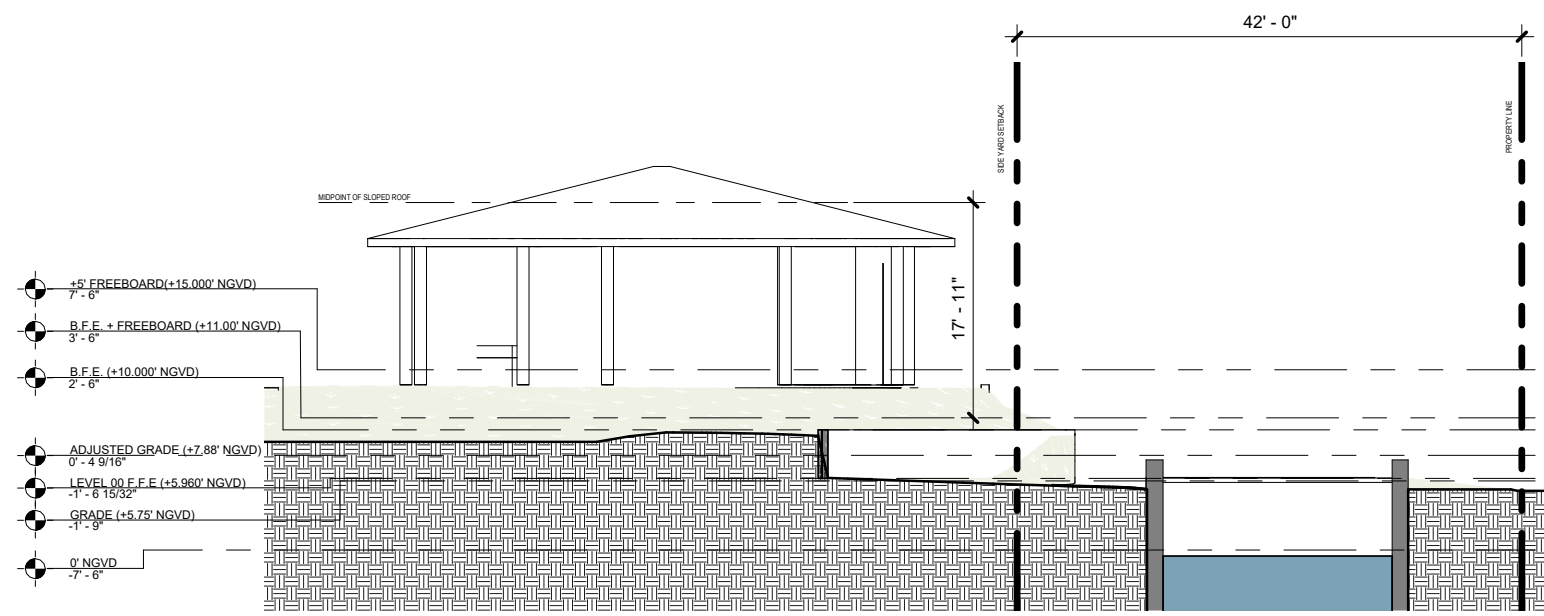
Scale 1/16" = 1'-0"

7/11/2025 23:51:38

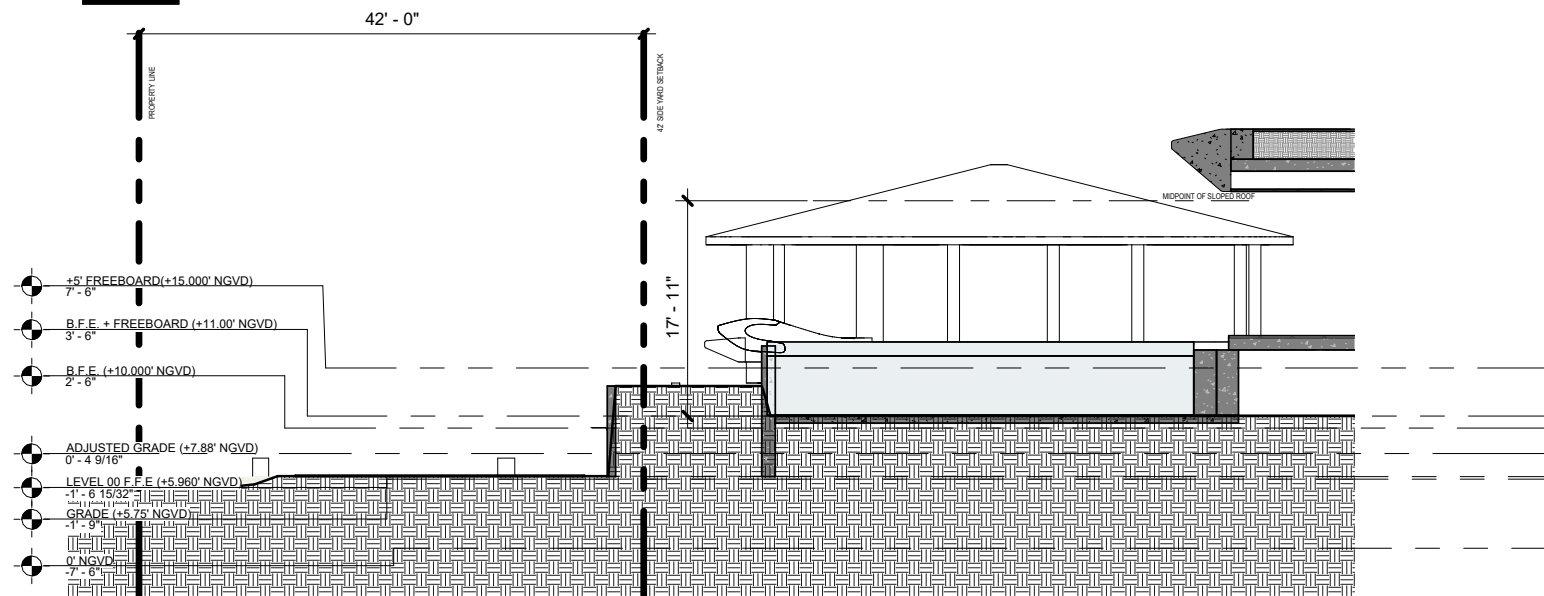
Project # 25002

ELEVATION -
ACCESSORY
STRUCTURE

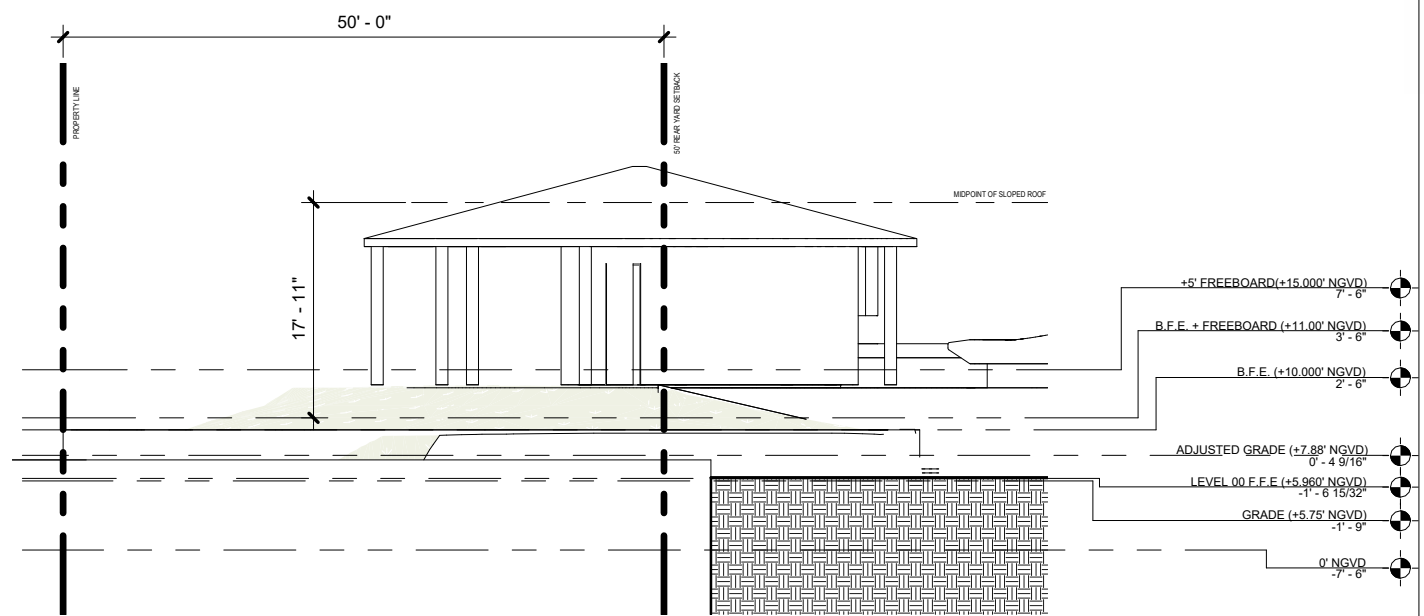
A-3.6



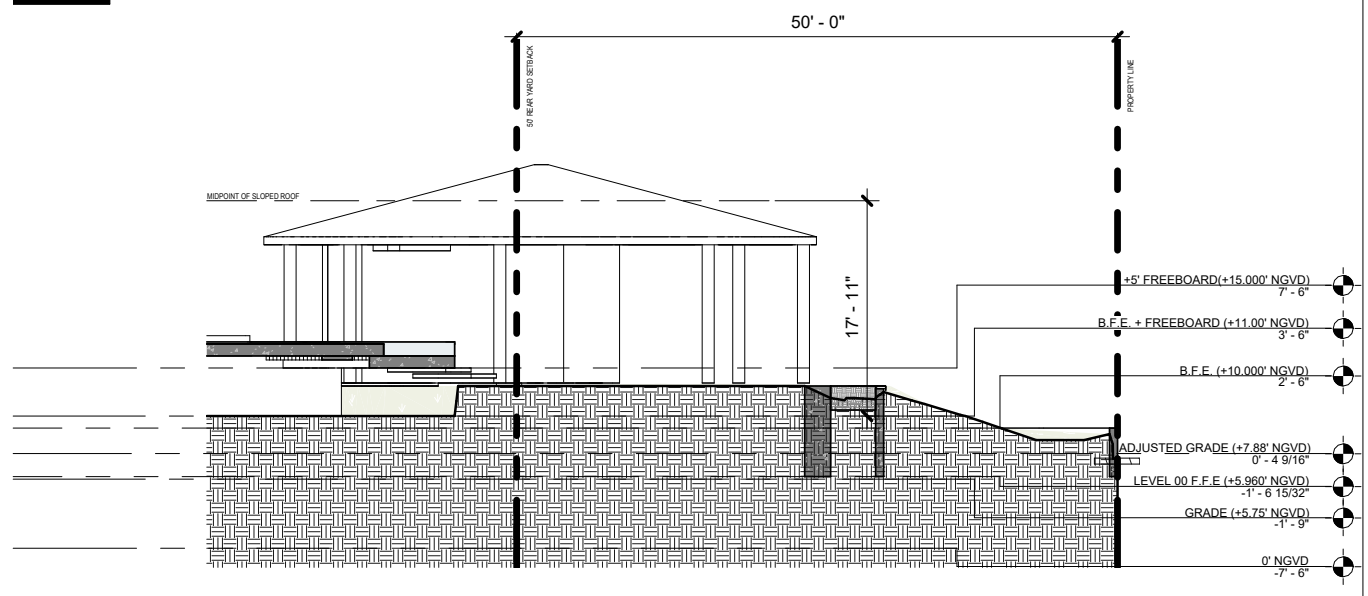
1 CABANA - WEST ELEVATION
1/16" = 1'-0"



2 CABANA - EAST ELEVATION
1/16" = 1'-0"

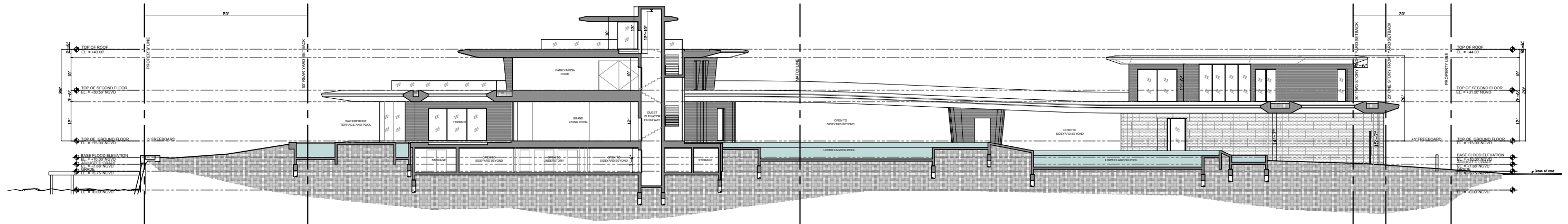


3 CABANA - SOUTH ELEVATION
1/16" = 1'-0"

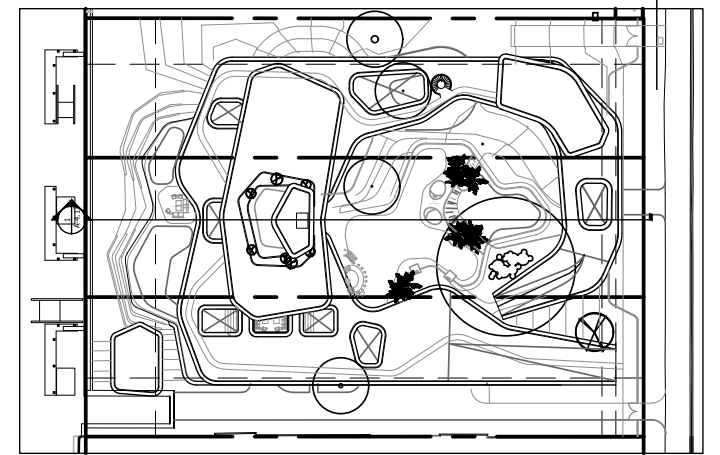


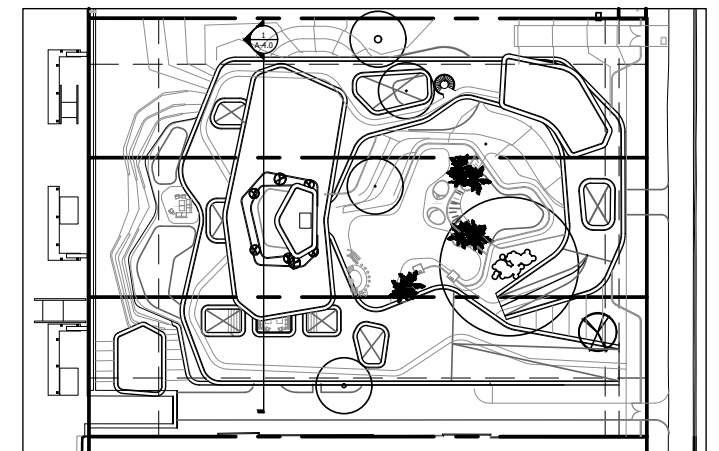
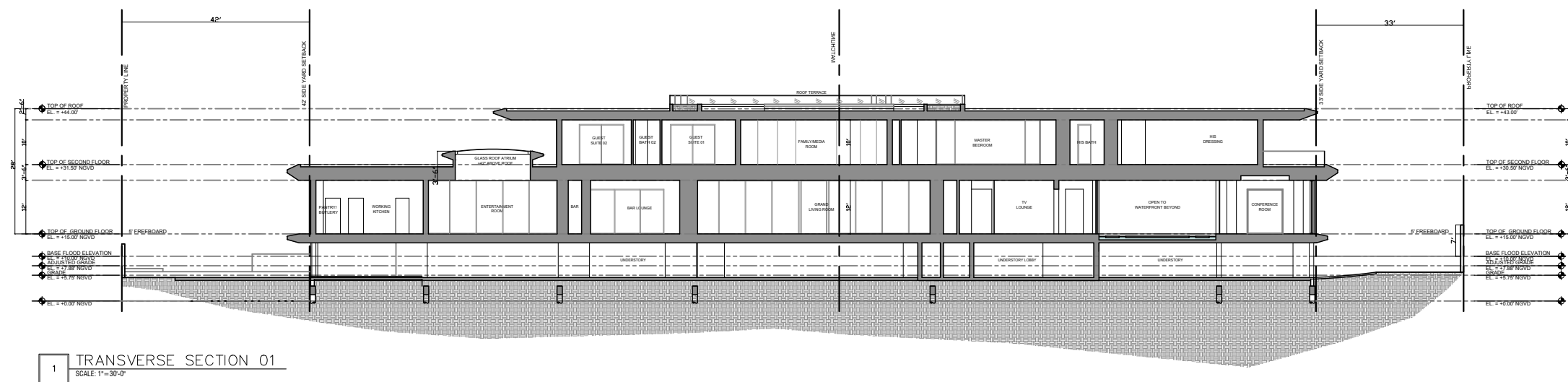
4 CABANA - NORTH ELEVATION
1/16" = 1'-0"



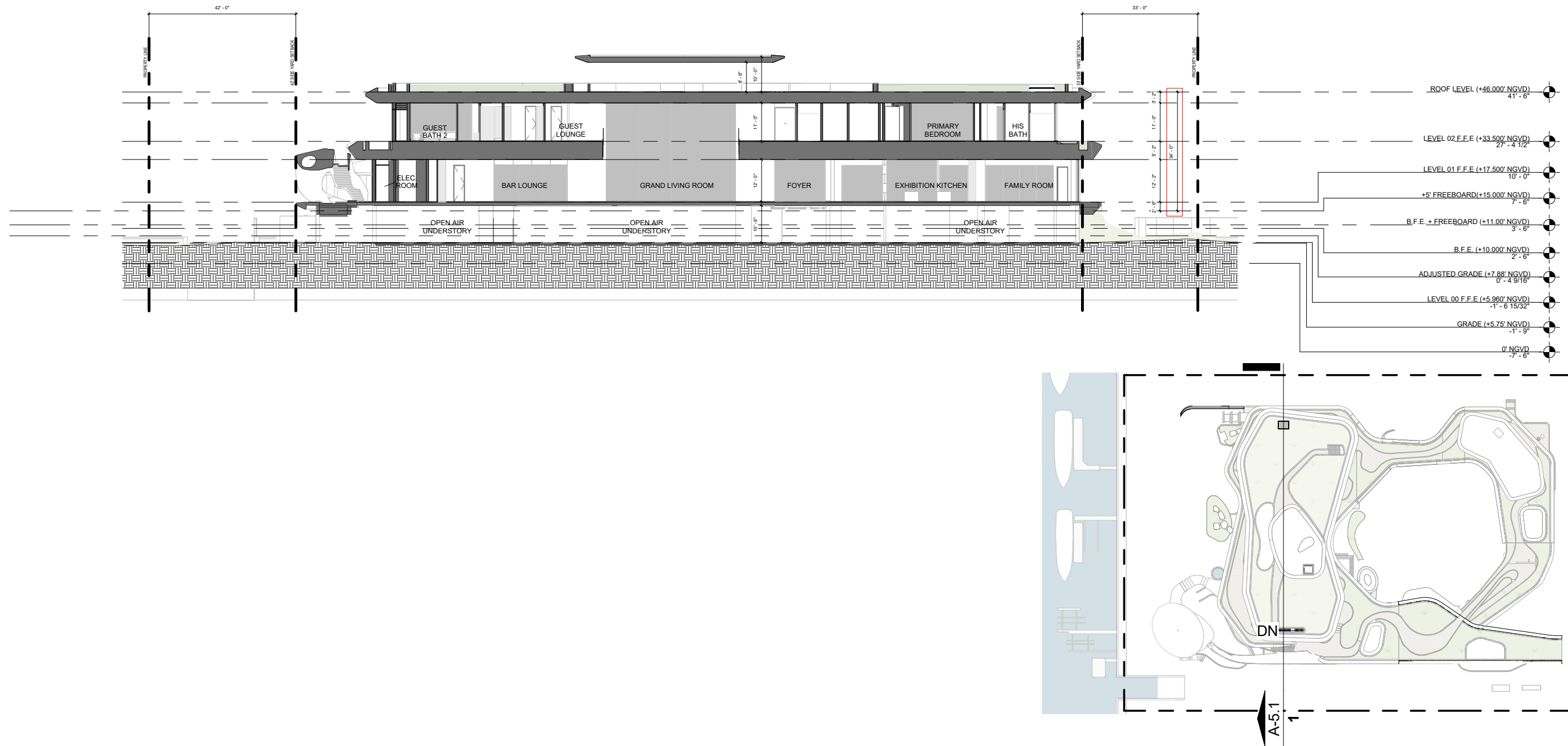


1 LONGITUDINAL SECTION
SCALE: 1"=30'-0"





SECTION - REQUEST FOR MODIFICATION DRB22-0859 - SEEKING 31' OF TOTAL BUILDING HEIGHT AS OF RIGHT UNDER CURRENT ZONING CODE



KODA+DOMO
ARCHITECTURE + DESIGN
7500 NE 4th Ct #100
Miami, FL 33138
info@kodamiami.com
305.359.3669

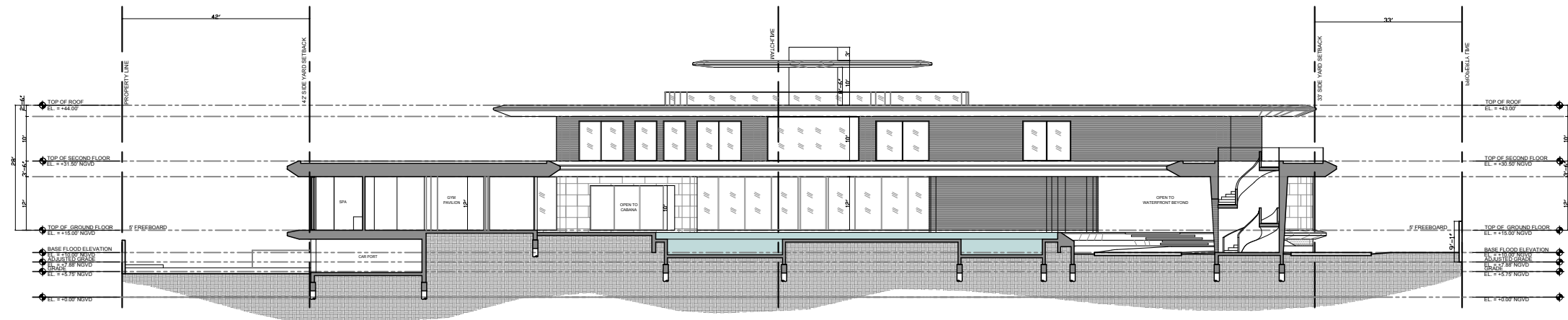
456 STAR ISLAND
4,5,6 STAR ISLAND DRIVE, MIAMI BEACH,
FL 33139
JULY 13TH 2025 - DRB FINAL SUBMITTAL



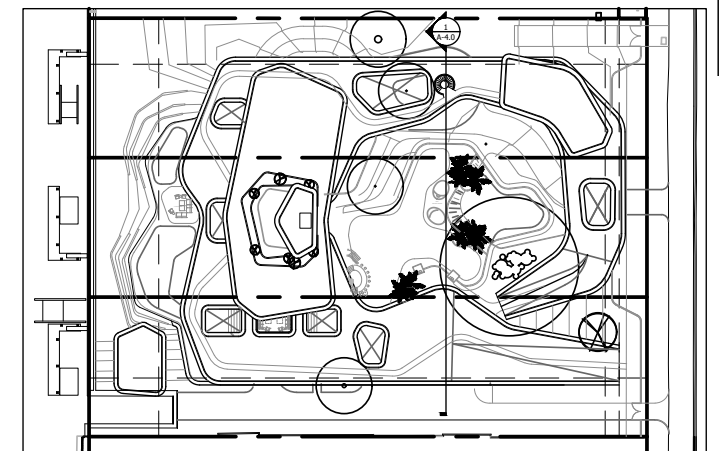
Robert M Moehring
2025.07.12 15:28:08
-04'00'

Scale	As indicated
	7/11/2025 23:51:48
Project #	25002

SECTION
-TRANSVERSE
01
A-5.1

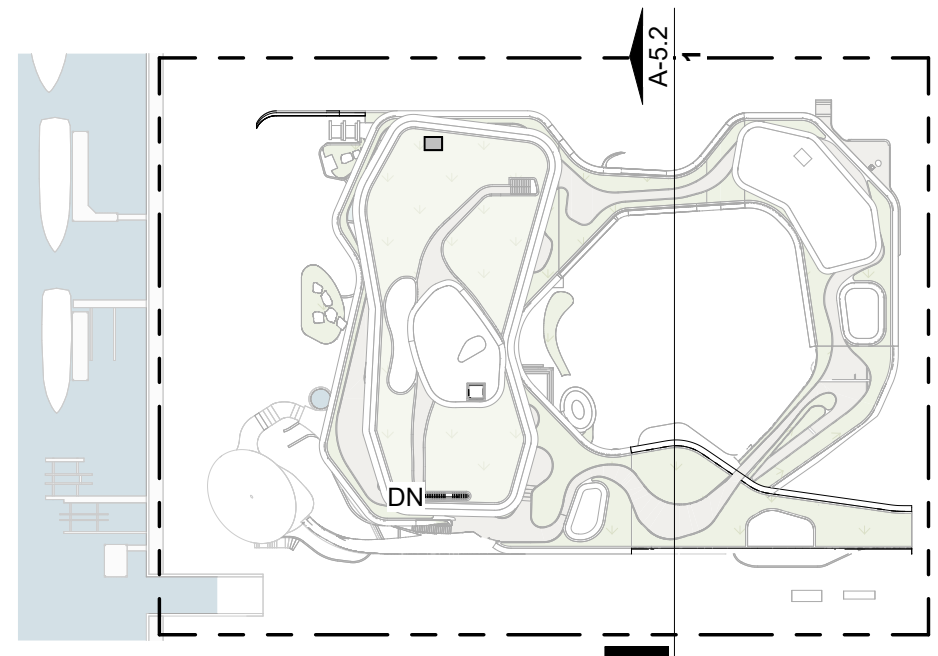
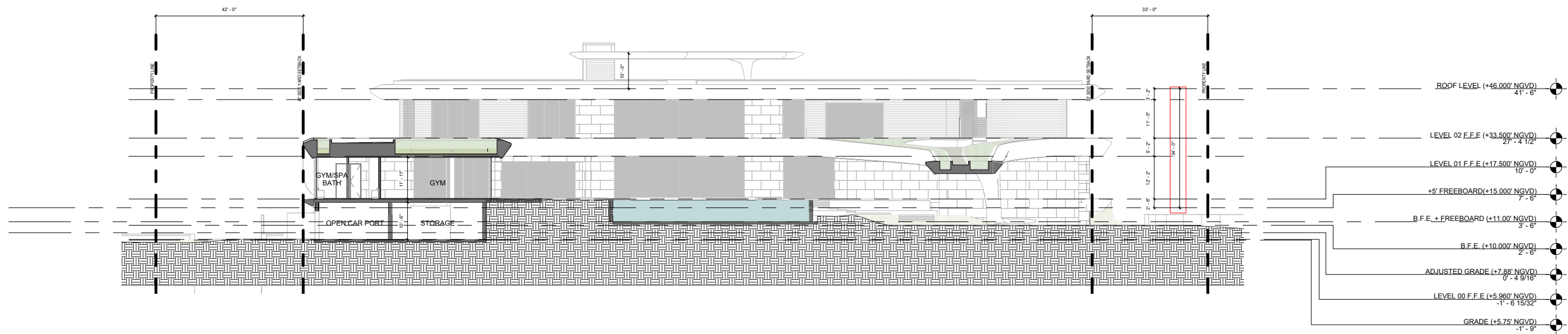


1 TRANSVERSE SECTION 02
SCALE: 1"=30'-0"



This seal has been electronically signed and sealed by Robert Moehring using a Digital Signature and Seal. Printed copies of this document are not considered signed and sealed and the signature must be verified on any electronic copies.

SECTION - REQUEST FOR MODIFICATION DRB22-0859 - SEEKING 31' OF TOTAL BUILDING HEIGHT AS OF RIGHT UNDER CURRENT ZONING CODE



KODA+DOMO
ARCHITECTURE + DESIGN
7500 NE 4th Ct #100
Miami, FL 33138
info@kodamiami.com
305.359.3669

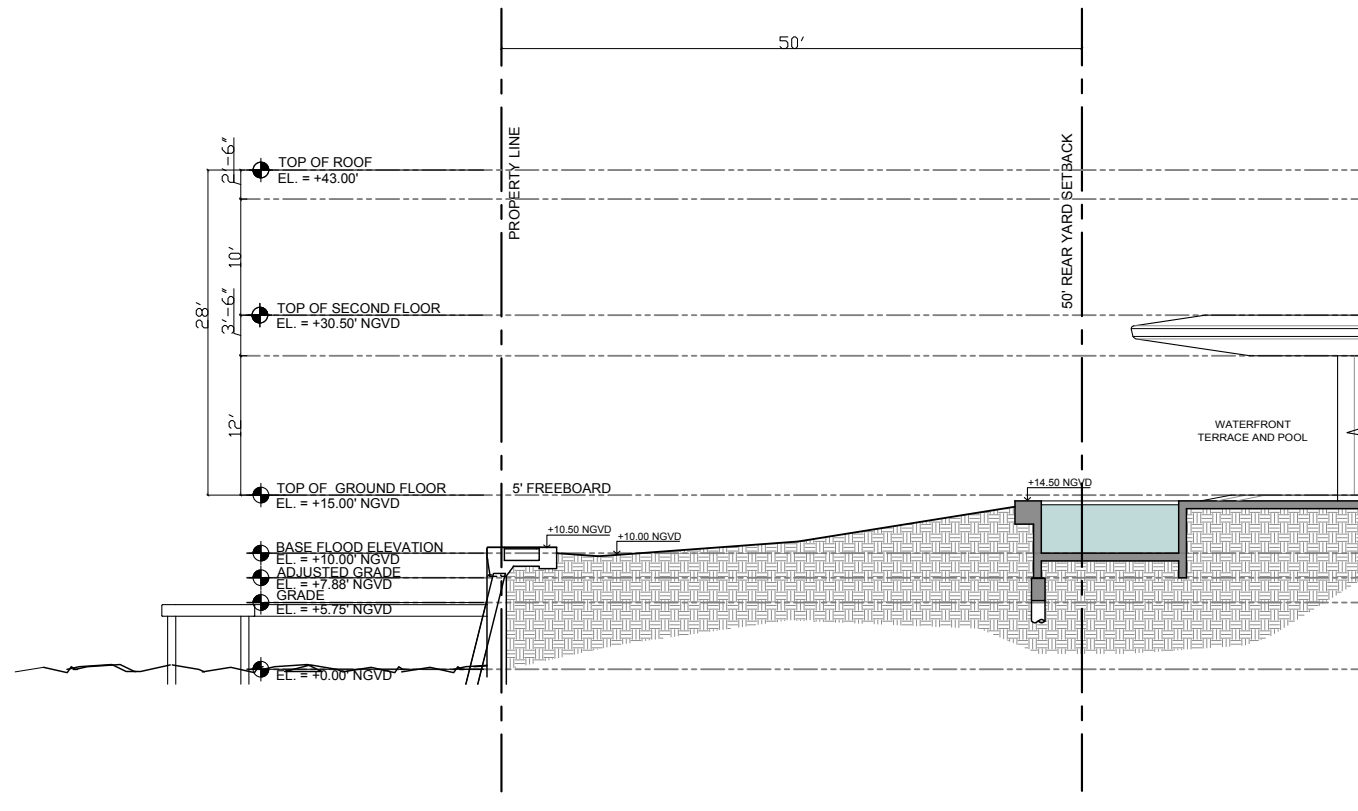
456 STAR ISLAND
4,5,6 STAR ISLAND DRIVE, MIAMI BEACH,
FL 33139
JULY 13TH 2025 - DRB FINAL SUBMITTAL



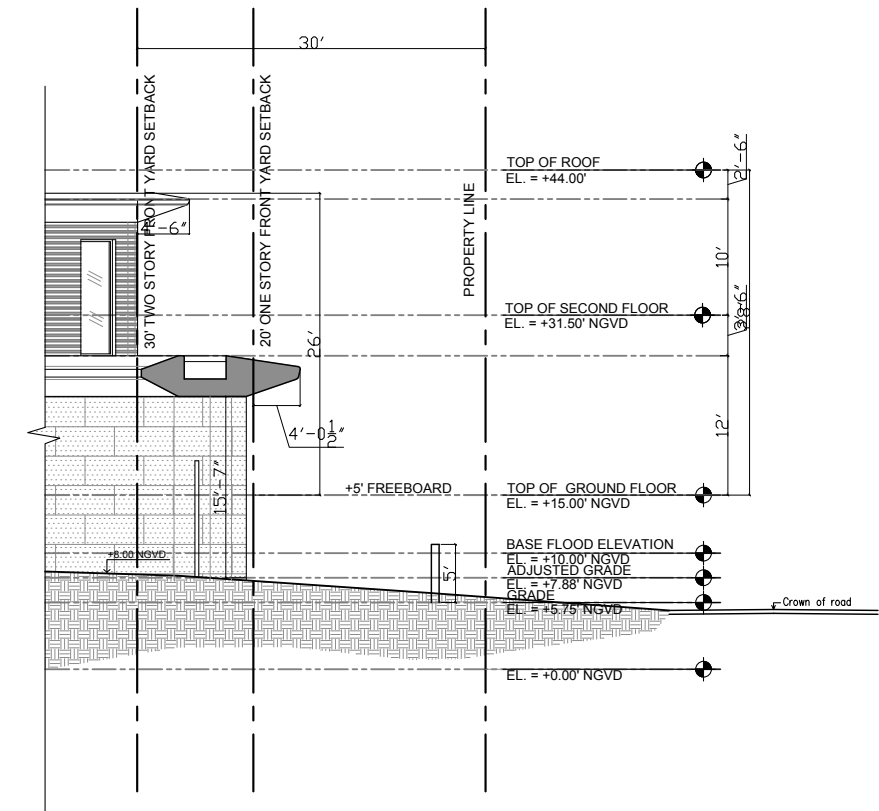
Robert M Moehring
2025.07.12 15:29:36
-04'00'

Scale	As indicated
7/11/2025 23:51:53	
Project #	25002

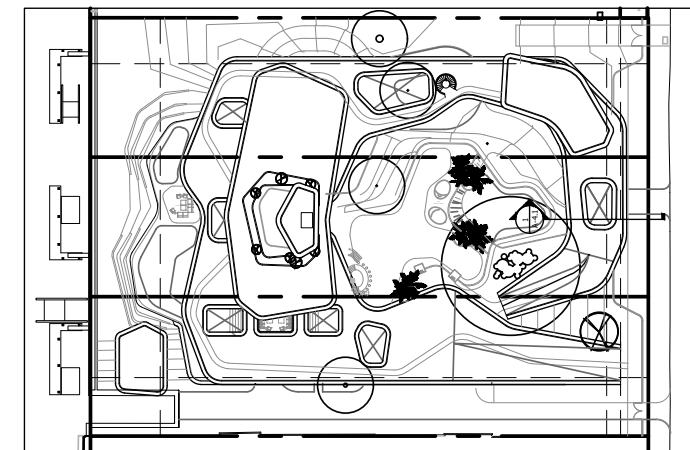
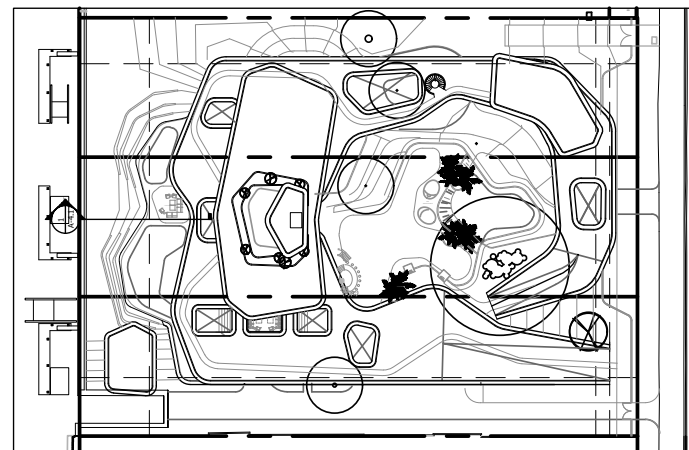
SECTION
-TRANSVERSE
02
A-5.2



3 REAR YARD SECTION
SCALE: 1/16"=1'-0"

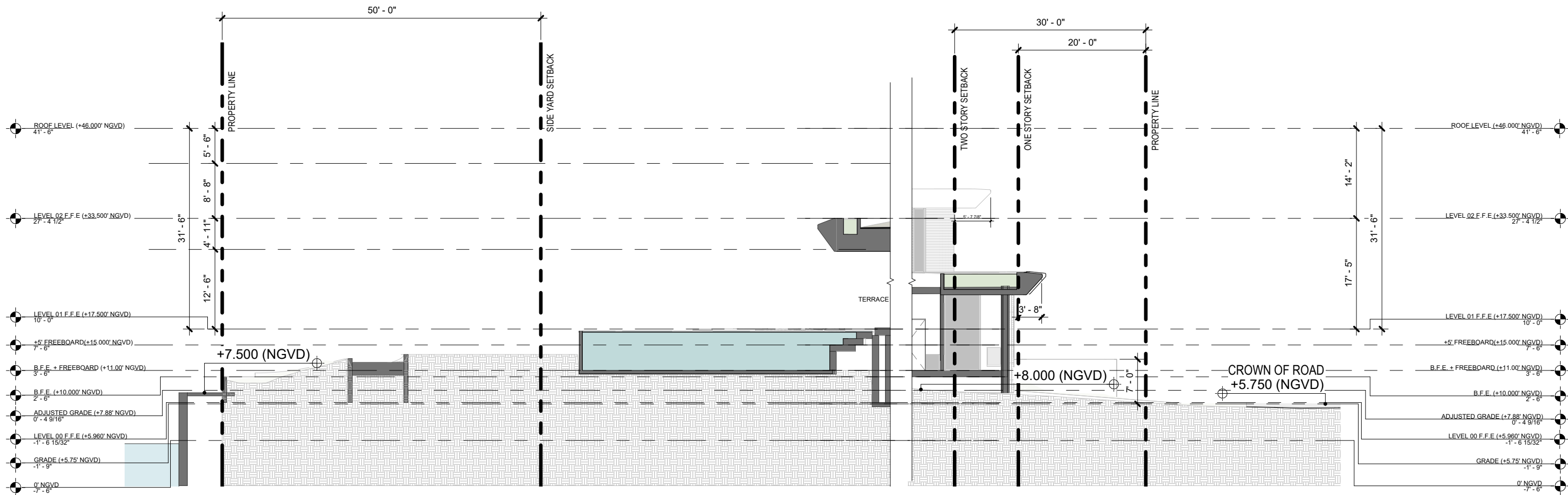


4 FRONT YARD SECTION
SCALE: 1/16"=1'-0"



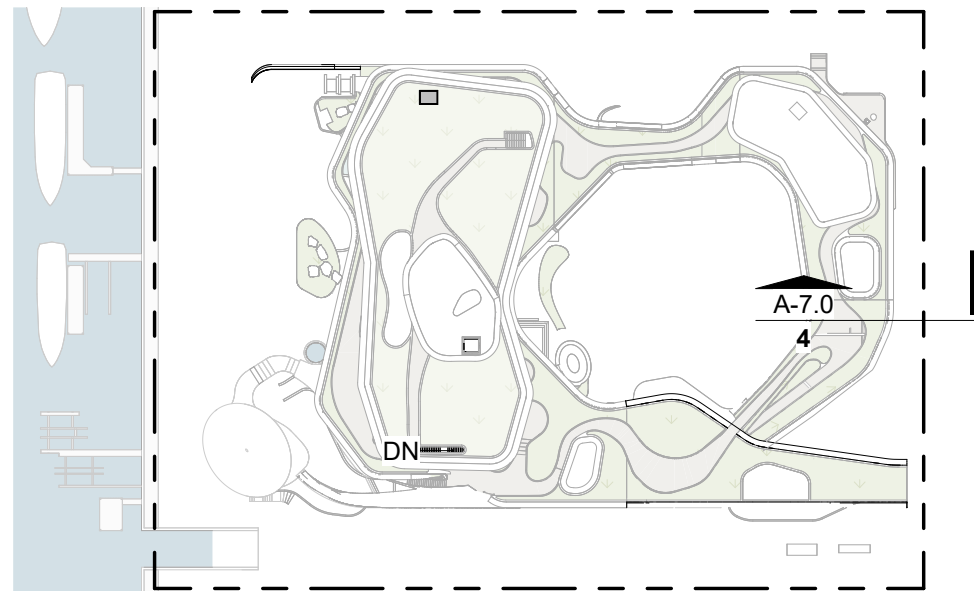
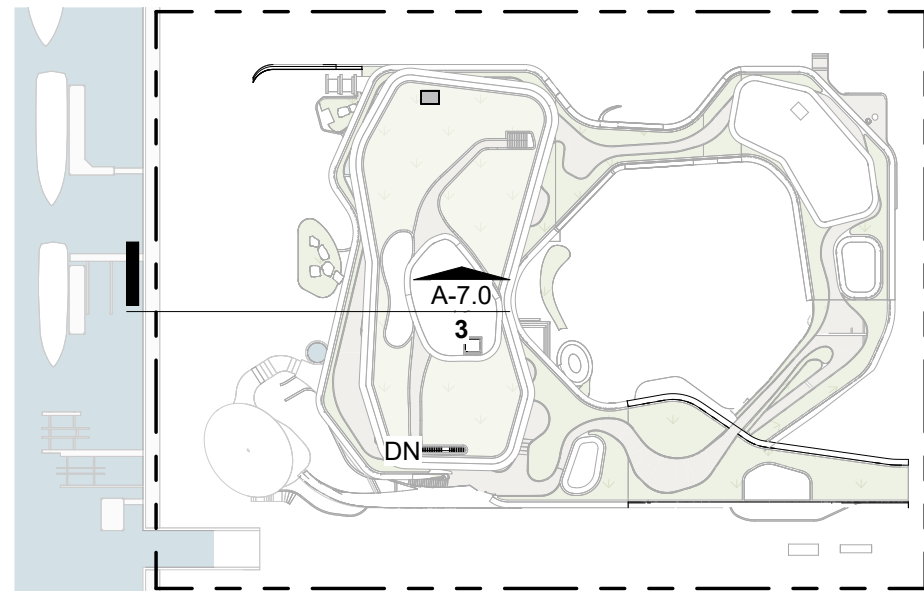
Robert M
Moehring
2025.07.12
15:30:22 -04'00'

MODIFICATION REQUEST - YARD SECTIONS - FRONT AND REAR



3 REAR YARD SECTION - DRB
1/16" = 1'-0"

4 FRONT YARD SECTION
1/16" = 1'-0"



Robert M Moehring
2025.07.12 15:31:08
-04'00'

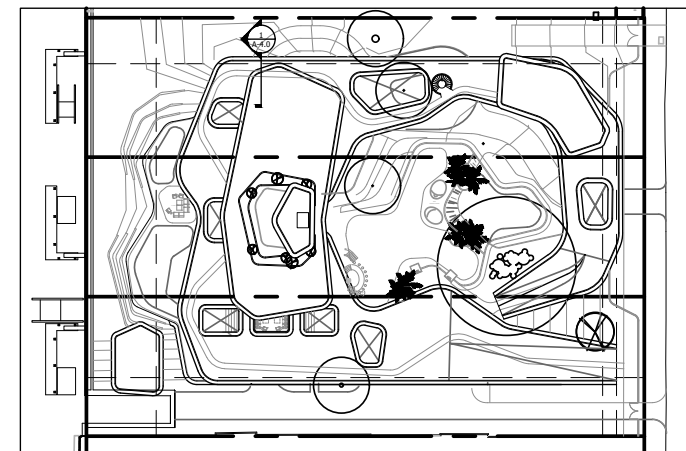
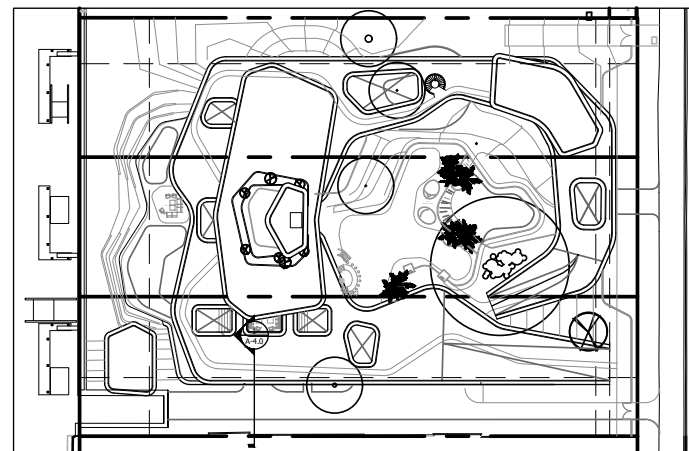
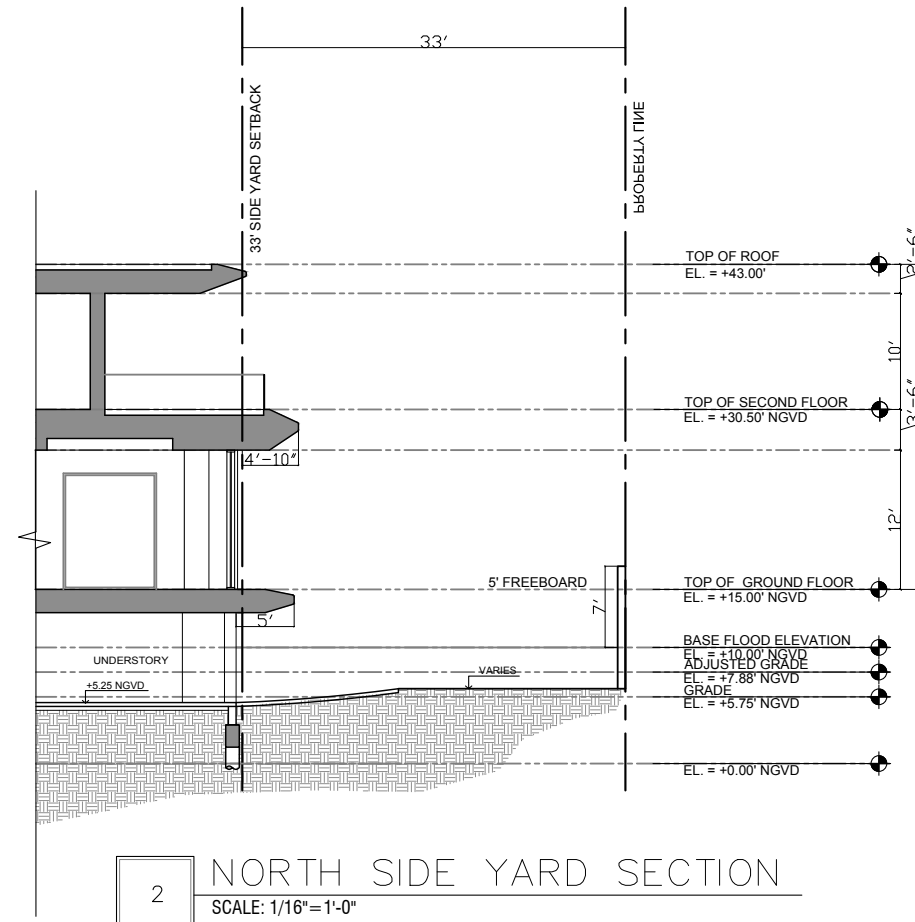
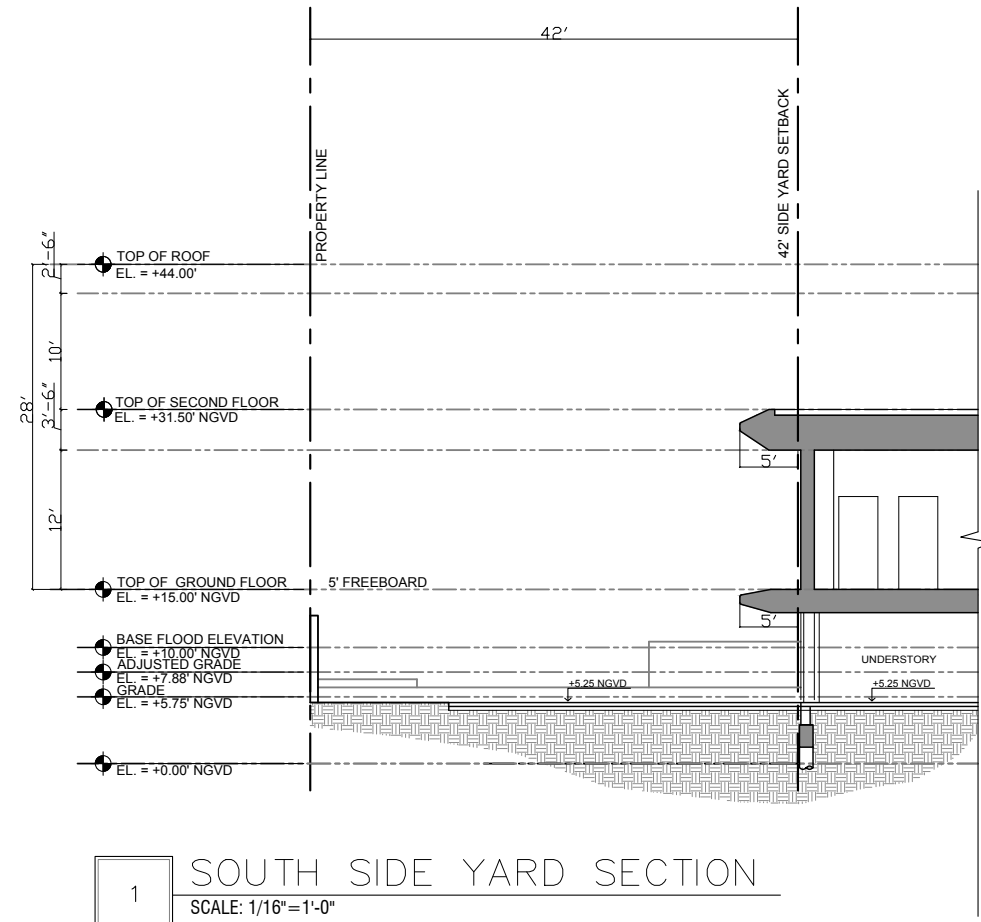
Scale As indicated

7/11/2025 23:52:01

Project # 25002

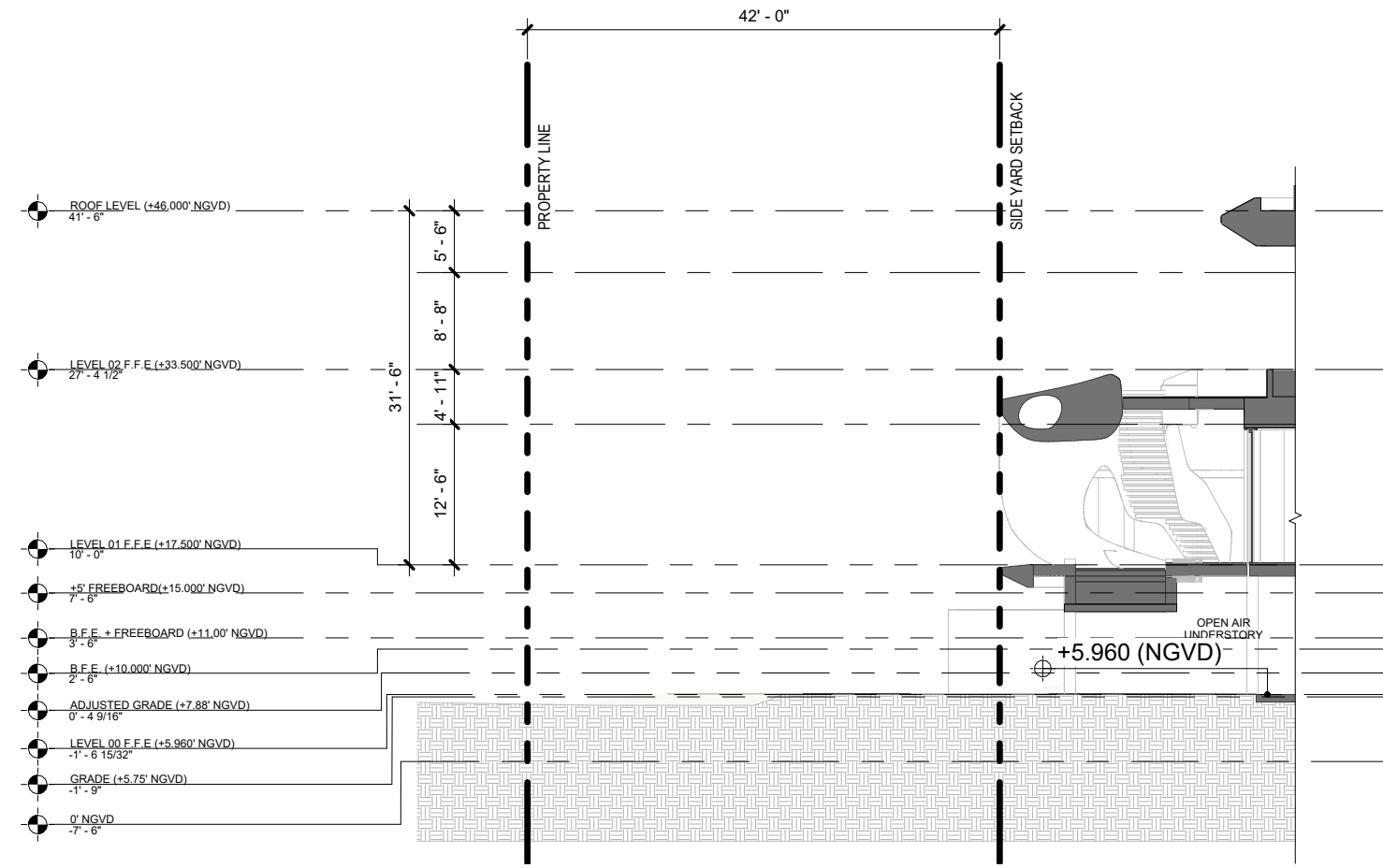
YARD
SECTIONS -
FRONT AND
REAR

A-7.0

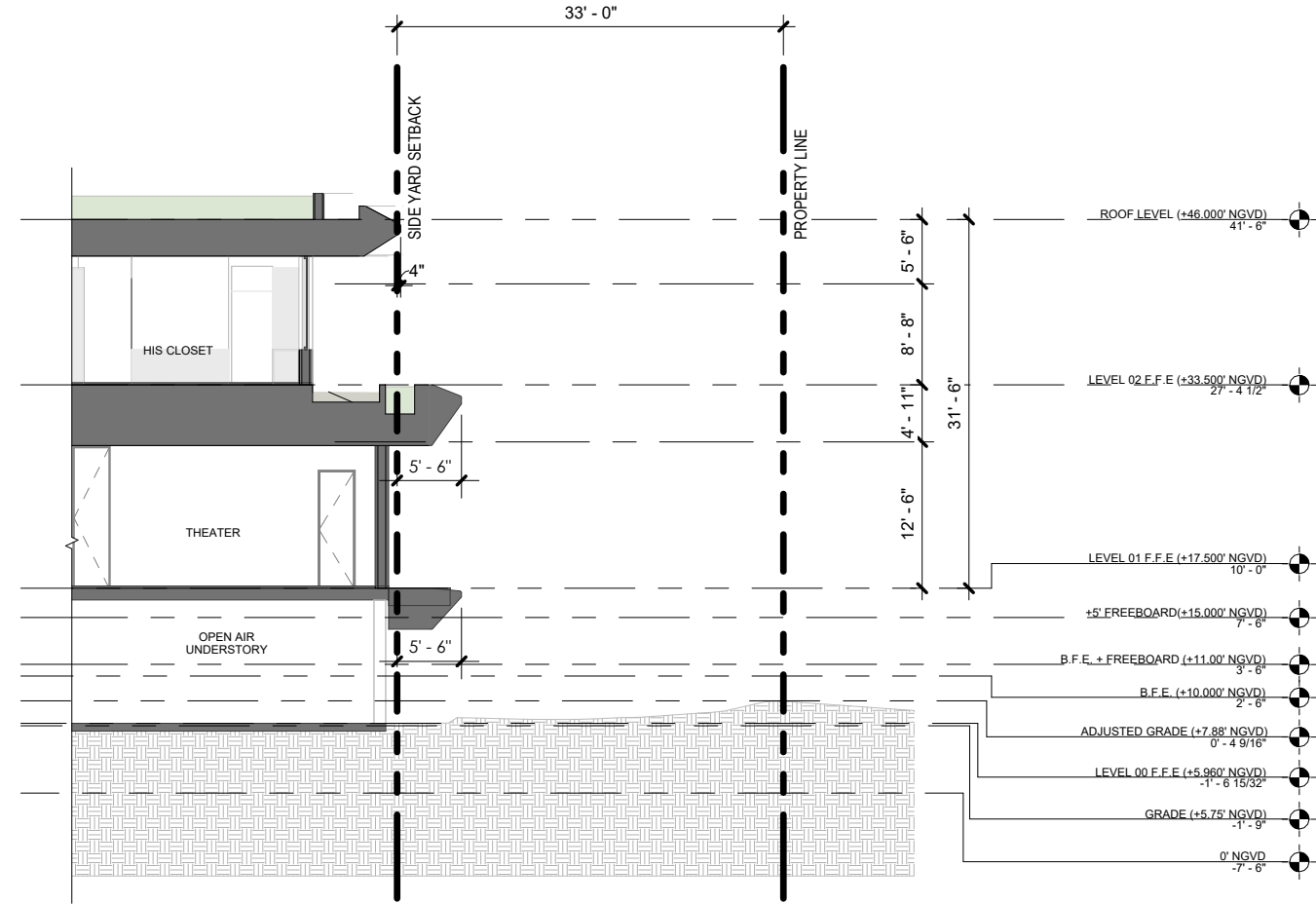
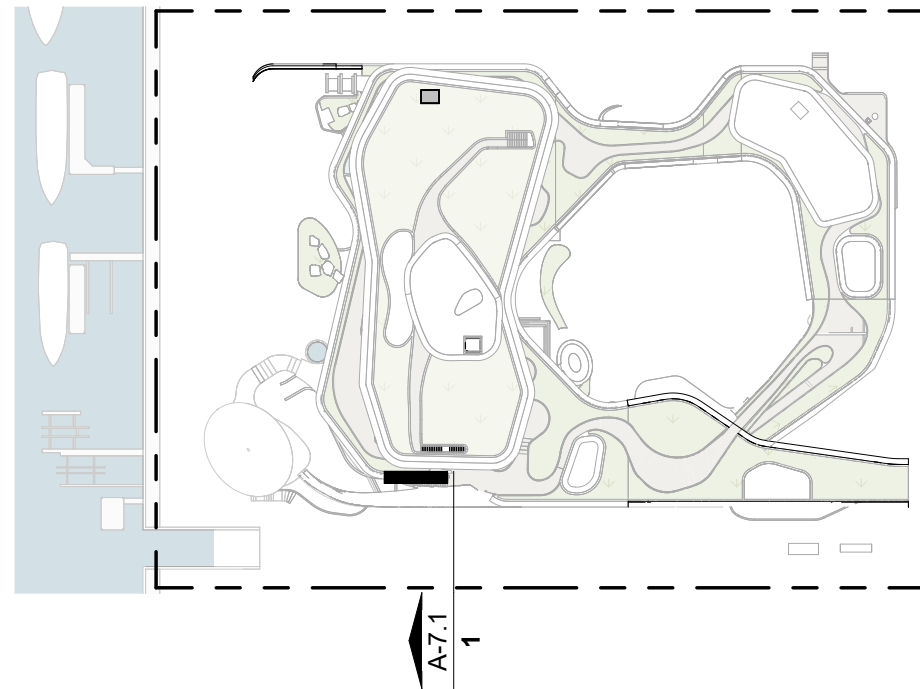


Robert M
Moehring
2025.07.12
15:31:51 -04'00'

MODIFICATION REQUEST - YARD SECTIONS - SIDES



1 SOUTH SIDE YARD SECTION
1/16" = 1'-0"



2 NORTH SIDE YARD SECTION
1/16" = 1'-0"

