

MODIFICATION TO DRB22-0859 APPROVAL FOR SINGLE FAMILY RESIDENCE

DESIGN REVIEW BOARD

DRB FILE No. DRB25-1105

4,5,6 STAR ISLAND DRIVE

CLIENT

BRIAN BILZIN TRUST
C/O BILZIN SUMBERG ETALS
1450 BRICKELL AVENUE, 23RD FLOOR
MIAMI, FL 33131

ARCHITECT OF RECORD

KODA ARCHITECTURE + DESIGN
7500 NE 4TH CT., SUITE 100
MIAMI, FL 33138
O: 305.359.3669
WWW.KODAMIAMI.COM

DESIGN ARCHITECT

DOMO ARCHITECTURE + DESIGN
420 LINCOLN ROAD, SUITE 506
MIAMI BEACH, FL 33139
O: 305.674.8031
WWW.DOMODESIGNSTUDIO.COM

LANDSCAPE ARCHITECT

RAYMOND JUNGLES, INC.
2964 AVIATION AVE, MIAMI, FL 33133
O: 305.858.6777
WWW.RAYMONDJUNGLES.COM

SCOPE OF WORK

NEW CONSTRUCTION OF TWO STORY SINGLE FAMILY RESIDENCE, WITH UNDERSTORY, POOL, TERRACES, PROPERTY WALLS AND FENCING, DRIVEWAY, AND LANDSCAPING

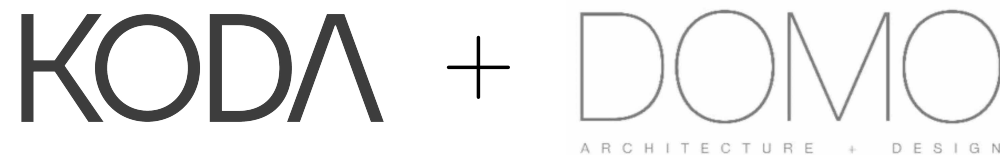
APPROVED VARIANCES:
01 AND 02 UNDERSTORY EDGE AND 50% OPEN
03 ELEVATOR BULKHEAD HEIGHT OF 3'



INDEX OF DRAWINGS

1	CV-0.0	GENERAL INFO
	EX-1.2	SURVERY
	EX-1.3	SURVERY
	EX-2.0	LOCATION PLAN
	EX-2.1	NEIGHBORHOOD ANALYSIS - KEY PLAN
	EX-2.2	NEIGHBORHOOD ANALYSIS - KEY PLAN
	EX-2.3	NEIGHBORHOOD ANALYSIS - KEY PLAN
	EX-2.4	NEIGHBORHOOD CONTEXT - PROPERTY
	EX-2.5	NEIGHBORHOOD CONTEXT - PROPERTY
	EX-2.6	NEIGHBORHOOD CONTEXT
	EX-2.7	NEIGHBORHOOD CONTEXT
	EX-2.8	NEIGHBORHOOD CONTEXT
1	A-0.0	ZONING DATA
1	A-1.0	APPROVED DRB22-0859 SITE PLAN
1	A-1.0	SITE PLAN
1	A-1.1	APPROVED DRB22-0859 - UNDERSTORY PLAN
1	A-1.1	UNDERSTORY PLAN
1	A-1.2	APPROVED DRB22-0859 - FIRST FLOOR PLAN
1	A-1.2	FIRST FLOOR PLAN
	A-1.3	APPROVED DRB22-0859 - SECOND FLOOR PLAN
	A-1.3	SECOND FLOOR PLAN
	A-1.4	APPROVED DRB-0859 - ROOF TERRACE PLAN
	A-1.4	ROOF TERRACE PLAN
	A-1.5	APPROVED DRB22-0859 - ROOF TERRACE PLAN
	A-1.5	ROOF PLAN
	A-2.0B	APPROVED DRB22-0859 - ZONING DIAGRAM - LOT COVERAGE OVERLAY
	A-2.0B	ZONING DIAGRAM - LOT COVERAGE OVERLAY
	A-2.1	APPROVED DRB22-0859 - ZONING DIAGRAM - UNIT SIZE UNDERSTORY
	A-2.1	ZONING DIAGRAM - UNIT SIZE UNDERSTORY
	A-2.2	APPROVED DRB-0859 - ZONING DIAGRAM - UNIT SIZE FIRST FLOOR
	A-2.2	ZONING DIAGRAM - UNIT SIZE FIRST FLOOR
	A-2.3	APPROVED DRB22-0859 - ZONING DIAGRAM - UNIT SIZE SECOND FLOOR
	A-2.3	ZONING DIAGRAM - UNIT SIZE SECOND FLOOR
	A-2.4	APPROVED DRB22-0859 - ZONING DIAGRAM - UNIT SIZE ROOF TERRACE
	A-2.4	ZONING DIAGRAM - UNIT SIZE ROOF TERRACE
	A-2.5	APPROVED DRB22-0859 - ZONING DIAGRAM - OPEN SPACE/ PERVIOUS AREA
1	A-2.5	ZONING DIAGRAM - PERVIOUS AREA
	A-2.6	APPROVED DRB22-0859 - AXONOMETRIC VIEWS
	A-2.6	AXONOMETRIC VIEWS

A-2.7	APPROVED DRB22-0859 - AXONOMETRIC VIEWS	
A-2.7	AXONOMETRIC VIEWS	
A-2.8	APPROVED DRB22-0859 - AXONOMETRIC VIEWS	
A-2.8	AXONOMETRIC VIEWS	
A-2.9	APPROVED DRB22-0859 - AXONOMETRIC VIEWS	
A-2.9	AXONOMETRIC VIEWS	
A-3.0	APPROVED DRB22-0859 - MATERIAL PALETTE	
A-3.1	APPROVED DRB22-0859 - ELEVATION - NORTH	
A-3.1	ELEVATION - NORTH	
A-3.2	APPROVED DRB22-0859 - ELEVATION - EAST	
A-3.2	ELEVATION - EAST	
A-3.3	APPROVED DRB22-0859 - ELEVATION - EAST - PROPERTY WALL	
A-3.3	ELEVATION - EAST - PROPERTY WALL	
A-3.4	APPROVED DRB22-0859 - ELEVATION - SOUTH	
A-3.4	ELEVATION - SOUTH	
A-3.5	APPROVED DRB22-0859 - ELEVATION - WEST	
A-3.5	ELEVATION - WEST	
A-3.6	APPROVED DRB22-0859 - ELEVATIONS - ACCESSORY STRUCTURE	
A-3.6	ELEVATION - ACCESSORY STRUCTURE	
A-5.0	APPROVED DRB22-0859 - SECTION - LONGITUDINAL	
A-5.0	SECTION - LONGITUDINAL	
A-5.1	APPROVED DRB22-0859 - SECTION - TRANSVERSE 01	
A-5.1	SECTION -TRANSVERSE 01	
A-5.2	APPROVED DRB22-0859 - SECTION - TRANSVERSE 02	
A-5.2	SECTION -TRANSVERSE 02	
A-7.0	APPROVED DRB22-0859 - YARD SECTIONS - FRONT AND REAR	
A-7.0	YARD SECTIONS - FRONT AND REAR	
A-7.1	APPROVED DRB22-0859 - YARD SECTIONS - SIDES	
A-7.1	YARD SECTION - SIDES	
A-8.0	APPROVED DRB22-0859 - RENDERING	
A-8.0	RENDERING	
A-8.1	APPROVED DRB22-0859 - RENDERING	
A-8.1	RENDERING	
A-8.2	APPROVED DRB22-0859 - RENDERING	
A-8.2	RENDERING	
A-9.0	APPROVED DRB22-0859 - VARIANCES 01 & 02: UNDERSTORY EDGE AND 50% OPEN	
A-9.0	COMPLIANCE WITH APPROVED DRB22-0859 - VARIANCE 01 & 02	
A-9.1	APPROVED DRB22-0859 - VARIANCE 03: ELEVATOR OVER RIDE	
A-9.1	COMPLIANCE WITH APPROVED DRB22-0859 - VARIANCE 03	
1	A-9.3	VARIANCE 04 REQUEST ACCESSORY STRUCTURE



ARCHITECTURE + DESIGN

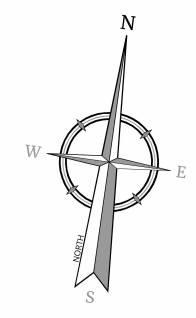
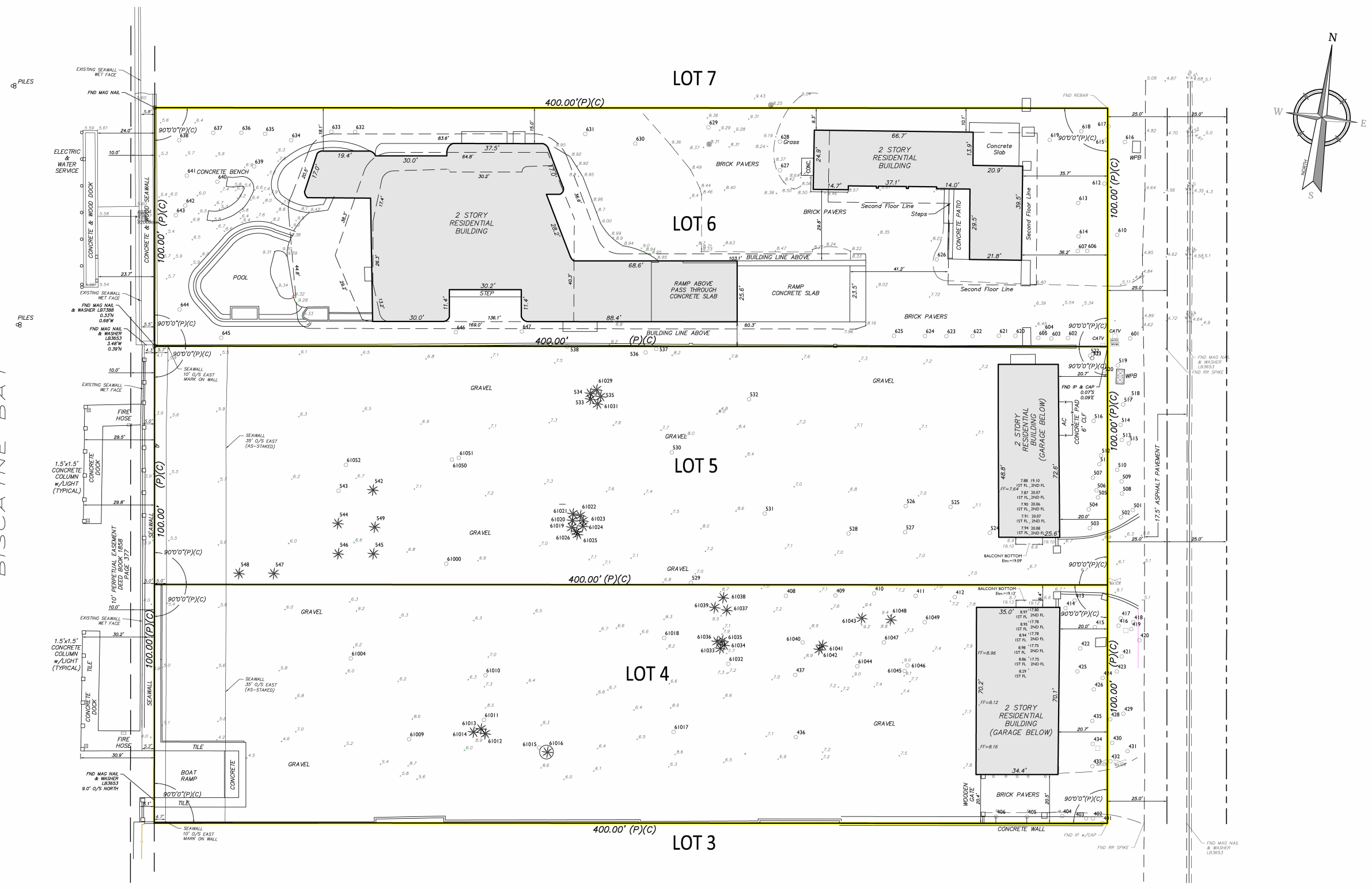
305.359.3669 | 7500 NE 4th CT., Suite 100 Miami, FL 33138 | info@kodamiami.com | AR97886

456 STAR ISLAND
4,5,6 STAR ISLAND DRIVE, MIAMI BEACH, FL 33139
JULY 13TH 2025 - DRB FINAL SUBMITTAL

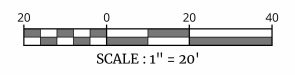


Robert M
Moehring
2025.07.12
14:25:55 -04'00'

BISCAYNE BAY



SEE SHEET 1 OF 2 FOR SURVEYOR'S NOTES AND LEGEND



Colliers
Engineering & Design
www.colliersengineering.com

811
PROTECT YOURSELF
ALL STATES REQUIRE NOTIFICATION OF EXCAVATIONS, DITCHES, OR ANY PERSON PREPARING TO DISTURB THE EARTH'S SURFACE ANYWHERE IN ANY STATE.
Know what's Below.
Call before you dig.
FOR STATE SPECIFIC DIRECT PHONE NUMBERS VISIT WWW.CALL811.COM

REV	DATE	DRAWN BY	DESCRIPTION
1	02/21/22	JET	UPDATE SURVEY
2	08/04/22	LD	UPDATE TO INCLUDE REVERSED TREE LOCATIONS AND SEAWALL OFFSETS.
3	03/14/24	LD	UPDATE TO INCLUDE REVERSED TREE LOCATIONS AND SEAWALL OFFSETS.
4	04/02/24	DD	REVISED LOT AREA.

Denis A Denis
FLORIDA PROFESSIONAL SURVEYOR AND MAPPER
LICENSE NUMBER: LS2017
COLLIERS ENGINEERING & DESIGN, INC.
F.L. License #: LB7388

BOUNDARY SURVEY
FOR
Handcraft
Lot 4
Lot 5
Lot 6
Star Island
Miami Beach
Miami-Dade County
Florida

Colliers MIAMI
7400 Corporate Center Drive
Suite C
Miami, FL 33126
Phone: 305.392.3190
COLLIERS ENGINEERING & DESIGN, INC.

SCALE: AS SHOWN DATE: 03/08/2021 DRAWN BY: JET CHECKED BY: DD
PROJECT NUMBER: 23014979A 4-5-6 STAR ISLAND 03-14-2024
SHEET TITLE: BOUNDARY SURVEY
SHEET NUMBER: 02 of 02

KODA+DOMO
ARCHITECTURE + DESIGN
7500 NE 4th Ct #100
Miami, FL 33138
info@kodamiami.com
305.359.3669

456 STAR ISLAND
4,5,6 STAR ISLAND DRIVE, MIAMI BEACH,
FL 33139
JULY 13TH 2025 - DRB FINAL SUBMITTAL



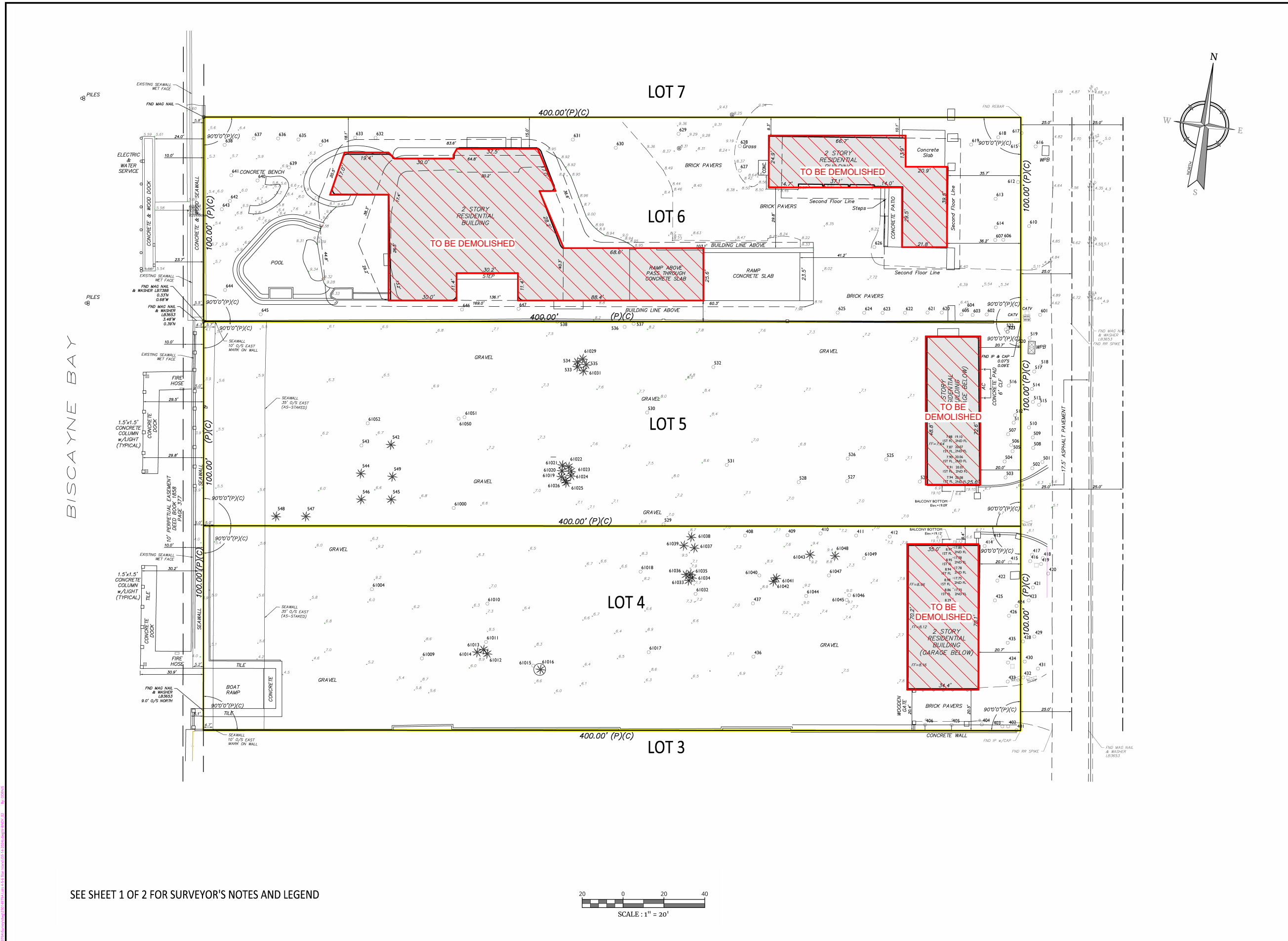
Robert M Moehring
2025.07.12 14:29:35
-04'00'

Scale	
7/11/2025 23:53:18	
Project #	25002

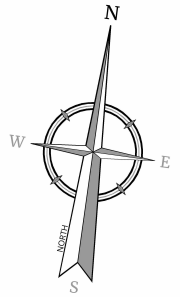
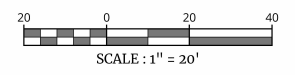
SURVEY
EX-1.3

NOTE: DO NOT SCALE DRAWINGS FOR CONSTRUCTION.

DEMO PLAN



SEE SHEET 1 OF 2 FOR SURVEYOR'S NOTES AND LEGEND



Colliers
Engineering & Design
www.colliersengineering.com

811
PROTECT YOURSELF
ALL STATES REQUIRE NOTIFICATION OF EXCAVATIONS, DITCHES, OR ANY PERSON PREPARING TO DISTURB THE EARTH'S SURFACE ANYWHERE IN ANY STATE.
Know what's Below. Call before you dig.
FOR STATE SPECIFIC DIRECT PHONE NUMBERS VISIT WWW.CALL811.COM

REV	DATE	DRAWN BY	DESCRIPTION
1	02/17/22	JET	UPDATE SURVEY
2	08/04/22	JET	UPDATE TO INCLUDE REVERSED TREE LOCATIONS AND SEAWALL OFFSETS.
3	03/14/24	LD	UPDATE TO INCLUDE REVERSED TREE LOCATIONS AND SEAWALL OFFSETS.
4	04/02/24	DD	REVISED LOT AREA.



Denis A Denis
FLORIDA PROFESSIONAL SURVEYOR AND MAPPER
LICENSE NUMBER: LS2017
COLLIERS ENGINEERING & DESIGN, INC.
F.L. License #: LB7388

BOUNDARY SURVEY
FOR
Handcraft
Lot 4
Lot 5
Lot 6
Star Island
Miami Beach
Miami-Dade County
Florida

Colliers
Engineering & Design
MIAMI
7400 Corporate Center Drive
Suite C
Miami, FL 33126
Phone: 305.392.3190
COLLIERS ENGINEERING & DESIGN, INC.

SCALE: AS SHOWN	DATE: 03/08/2021	DRAWN BY: JET	CHECKED BY: DD
PROJECT NUMBER: 23014979A	25002 STAR ISLAND 4,5-6 STAR ISLAND 03-14-2024		

BOUNDARY SURVEY
02 of 02

KODA+DOMO
ARCHITECTURE + DESIGN
7500 NE 4th Ct #100
Miami, FL 33138
info@kodamiami.com
305.359.3669

456 STAR ISLAND
4,5,6 STAR ISLAND DRIVE, MIAMI BEACH,
FL 33139
JULY 13TH 2025 - DRB FINAL SUBMITTAL



Robert M Moehring
2025.07.12 14:30:27
-04'00'

Scale	
7/11/2025 23:53:32	
Project #	25002

DEMO PLAN
EX-1.4

NOTE: DO NOT SCALE DRAWINGS FOR CONSTRUCTION.