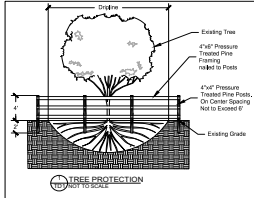


**TREE DISPOSITION PLAN**  
SCALE: 1" = 16'



**TREE DISPOSITION LEGEND**

EKEY	BOTANICAL	COMMON	HEIGHT IN FEET	CANOPY IN FEET	DBH IN IN	CONDITION	FORM	NATIVE/EXOTIC/INVASIVE	REMOVE/RELOCATE/PROTECT	REASON FOR REMOVAL
1	Casuarina equisetifolia	Australian Pine	80	36	48	N/A	N/A	Invasive	Remove	Invasive
3	Veitchia merrillii	Christmas Palm	24	10	6	GOOD	GOOD	Exotic	Remove	New Construction
4	Ficus benjamina	Weeping Fig	16	16	6	N/A	N/A	Invasive	Remove	Invasive
5	Ficus benjamina	Weeping Fig	16	16	6	N/A	N/A	Invasive	Remove	Invasive
6	Cocos nucifera	Coconut Palm	28	20	10	GOOD	GOOD	Exotic	Remove	New Construction
7	Ficus benjamina	Weeping Fig	16	16	6	N/A	N/A	Invasive	Remove	Invasive
8	Casuarina equisetifolia	Australian Pine	80	36	48	N/A	N/A	Invasive	Remove	Invasive
9	Casuarina equisetifolia	Australian Pine	80	36	48	N/A	N/A	Invasive	Remove	Invasive
10	Casuarina equisetifolia	Australian Pine	80	36	48	N/A	N/A	Invasive	Remove	Invasive
11	Ficus benjamina	Weeping Fig	40	40	30	N/A	N/A	Invasive	Remove	Invasive
12	Casuarina equisetifolia	Australian Pine	80	36	48	N/A	N/A	Invasive	Remove	Invasive
13	Bauhinia blakaena	Hong Kong Orchid Tree	24	20	8	Fair-Poor	Fair-Poor	Exotic	Remove	New Construction

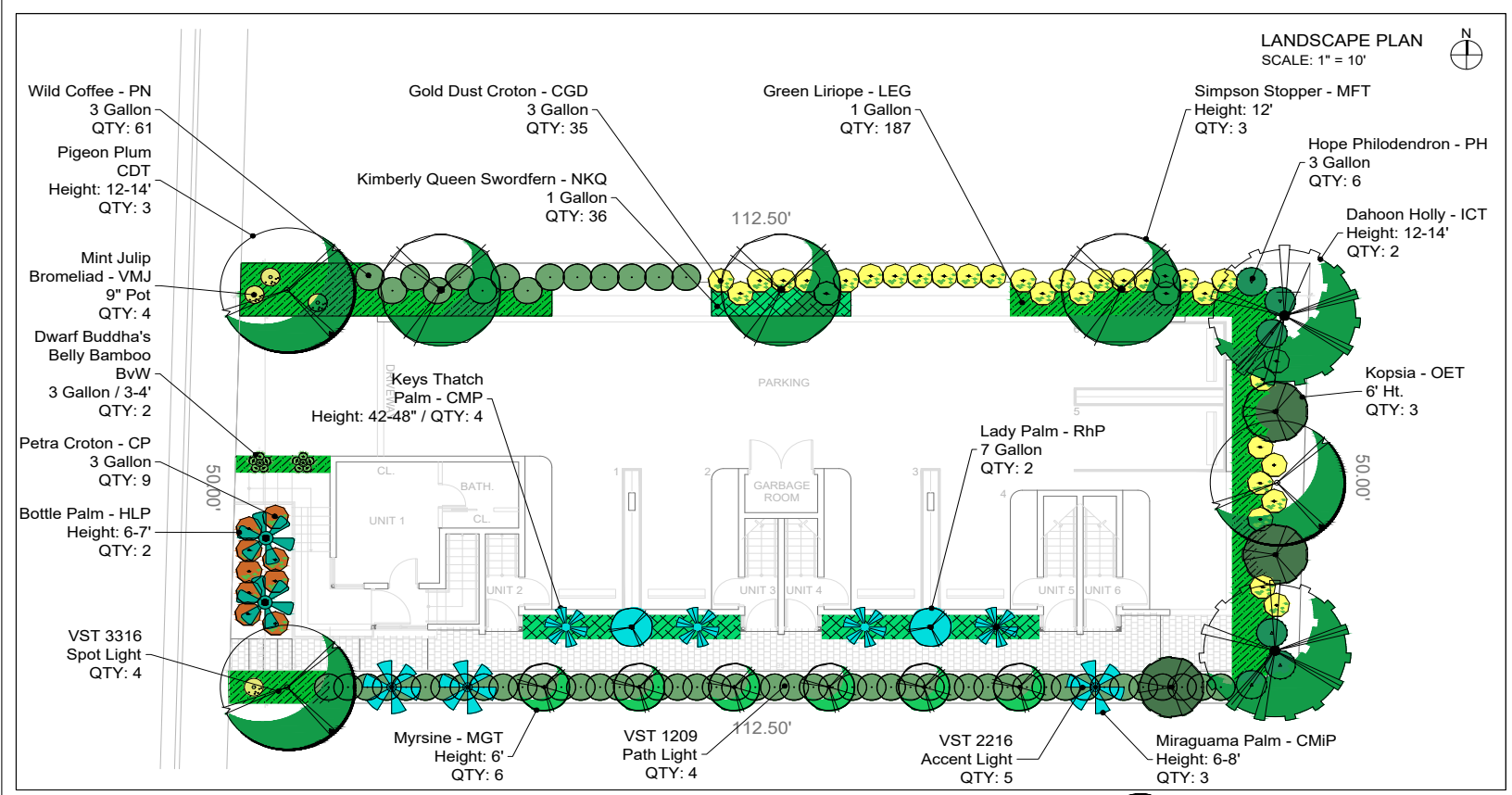
**NEW CARLYLE CONDOMINIUM**  
7729 CARLYLE, MIAMI BEACH, FL

**Scott F Neitzel**

Digitally signed by Scott F Neitzel  
Date: 2025.04.29 16:35:29 -04'00'



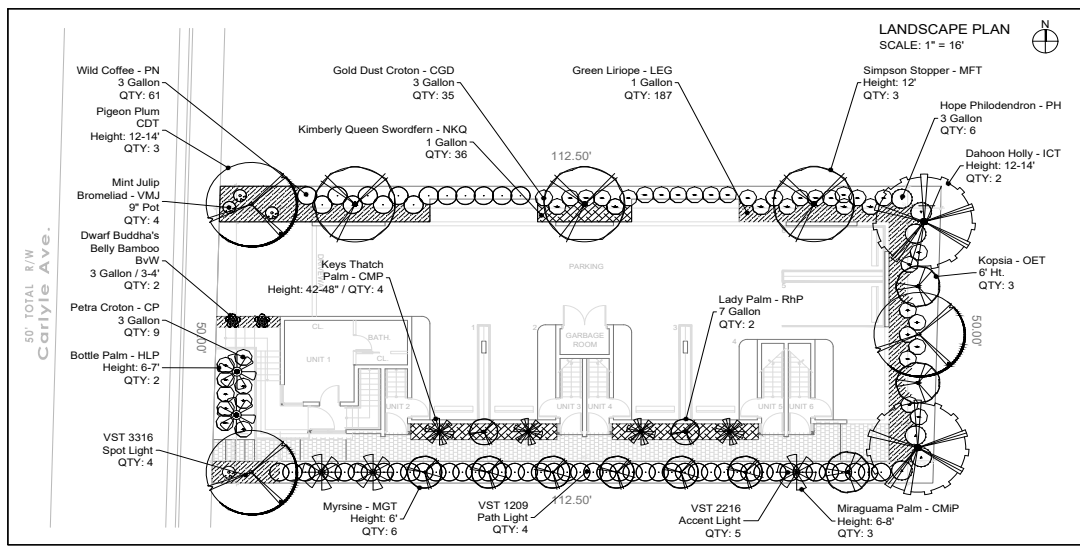
GUSTAVO J. RAMOS ARCHITECTURE | PLANNING | INTERIORS  
8935 NW 35th LN, STE. # 204, DORAL, FL 33172 | PHONE 305 599 4947



**NEW CARLYLE CONDOMINIUM**  
7729 CARLYLE, MIAMI BEACH, FL

Digitally signed by Scott F Neitzel  
Date: 2025.04.29 16:36:11 -04'00'





**TREES**



Pigeon Plum Dahoon Holly Myrsine Simpson Stopper

**PALMS**



Keys Thatch Palm Lady Palm Miraguama Palm Bottle Palm

**SHRUBS**



Wilde Coffee Petra Croton Gold Dust Croton Hope Philodendron

**GROUNDCOVER**



Green Liriope Kimberly Queen Fern

**ACCENTS**



Dwarf Buddha's Belly Bamboo Mint Julip Bromeliad

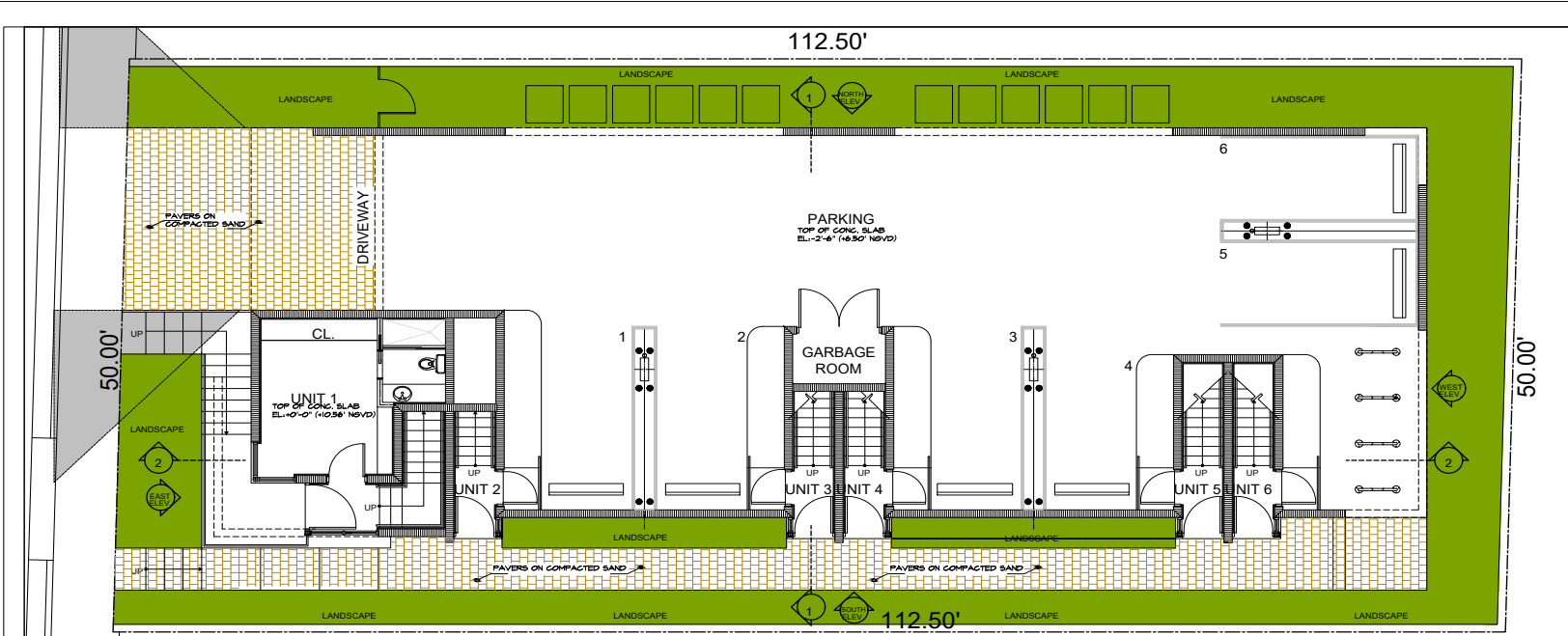
**NEW CARLYLE CONDOMINIUM**  
7729 CARLYLE, MIAMI BEACH, FL

Digitally signed  
by Scott F  
Neitzel  
Date: 2025.04.29  
16:36:36 -04'00'



GUSTAVO J. RAMOS ARCHITECTURE | PLANNING | INTERIORS  
8935 NW 35th LN. STE. # 204, DORAL, FL 33172 | PHONE 305 599 4947







**HARDCAPED AREA:**  
 (TOTAL LOT AREA: 5,625 SQ.FT.)  
 - HARDCAPED AREA PROVIDED: 812 SQ.FT. (14.4%)

**LANDSCAPED AREAS:**  
 (TOTAL LOT AREA: 5,625 SQ.FT.)  
 - TOTAL LANDSCAPED AREA PROVIDED: 1,490 SQ.FT. (26.5%)

**TOTAL HARDCAPED AREA: 812 SQ.FT.**  
**TOTAL LANDSCAPED AREA: 1490 SQ.FT.**

-  ALL NATURALLY LANDSCAPED AREAS
-  HARDCAPED AREAS (PAVERS ON COMPACTED SAND)

 **LANDSCAPED AND HARDCAPED AREAS DIAGRAM**

HARDCAPE PLAN  
 SCALE: 1" = 8'

**NEW CARLYLE CONDOMINIUM**  
 7729 CARLYLE, MIAMI BEACH, FL


 Digitally signed by Scott F. Neitzel  
 Date: 2025.04.29 16:37:38 -04'00'  


**GUSTAVO J. RAMOS**  
 ARCHITECTURE | PLANNING | INTERIOR  
 8935 NW 35TH LN., STE. # 204, DOBAL  
 FL 33172 | PHONE 305 899 4947

**Reitzel Design Group**  
 LANDSCAPE ARCHITECTURE  
 LANS & Environmental Planning  
 PO Box 825642, South Florida, Florida 33082  
 305 316 8003 - 305 420 2080