

1601 24TH STREET, SUNSET 3

MIAMI, FLORIDA

LANDSCAPE DRAWINGS

04-06-2025
03-14-2025

SHEET INDEX

LANDSCAPE DRAWINGS		DRAWING NOTES
■ ■	L-000	COVER SHEET
□ □	L-001	GENERAL SITE NOTES
□ □	L-002	MATERIALS, GRADING & LAYOUT NOTES
■ ■	L-100	TREE DISPOSITION NOTES
■ □	L-101	TREE DISPOSITION NOTES
■ □	L-102	TREE DISPOSITION SCHEDULE
■ □	L-103	TREE DISPOSITION PHOTOS
■ □	L-104	TREE DISPOSITION PLAN
■ ■	L-300	LANDSCAPE PLAN, MATERIALS & NOTES
■ ■	L-301	LANDSCAPE LEGEND
■ ■	L-600	LANDSCAPE YARD SECTIONS
■ □	L-601	LANDSCAPE YARD SECTIONS
■ ■	L-700	PLANTING SCHEDULE & NOTES
■ ■	L-701	TREE & PALM PLANTING PLAN
■ ■	L-703	UNDERSTORY PLANTING PLAN
□ □	L-703	PLANTING DETAILS
■ ■	L-800	LIGHTING PLAN

Rev.	Date	Rev.	Date

ALL DRAWINGS AND WRITTEN MATERIAL APPEARING HEREIN CONSTITUTE THE ORIGINAL AND UNPUBLISHED WORK OF KOBI KARP AIA, AND MAY NOT BE DUPLICATED, USED, OR DISCLOSED WITHOUT THE EXPRESS WRITTEN CONSENT OF KOBI KARP ARCHITECTURE & INTERIOR DESIGN, P.C. AIA, © 2022

NEW RESIDENCE
1601 W 24TH STREET, SUNSET 3,
MIAMI BEACH, FL, 33140

Owner:
Name
Address
Address
Tel:
Email

Design Architect:



WAYNE SWADRON
architecture | interiors | gardens

160 Pears Avenue, Suite 210, Toronto, Ontario M5R 3P8
+1 416 486 4800 / +1 416 486 6808 www.wayneswadron.com

Landscape Architect:
Nielsen Landscape Architects, LLC
1447 Cypress Drive, Suite 2
Jupiter, Florida 33469 USA
Tel: +1(561) 402 9414



COVER SHEET

Date	MAR 2025	Sheet No.	L-000
Scale	M/S" = 1'-0" @ 11" x 17"		
Project	1601 W 24 STREET, MIAMI BEACH, FL		



TREE DISPOSITION SCHEDULE

#	BOTANICAL NAME	COMMON NAME	DBH.	HT.	SPREAD	ACTION	NOTES
1	CONOCARPUS ERECTUS	SILVER BUTTONWOOD	5"	8'	10'	REMOVE	LOCATION OF PLANT MATERIAL CONFLICTS WITH CONSTRUCTION ENVELOPE
2	ROYSTONIA REGIA	ROYAL PALM	14"	50'	24'	PRESERVE	CONTRACTOR TO PROTECT AND CARE FOR PLANT MATERIAL
3	CONOCARPUS ERECTUS	SILVER BUTTONWOOD	5"	8'	10'	REMOVE	LOCATION OF PLANT MATERIAL CONFLICTS WITH CONSTRUCTION ENVELOPE
4	COCOS NUCIFERA	COCONUT PALM	8"	36'	24'	REMOVE	LOCATION OF PLANT MATERIAL CONFLICTS WITH CONSTRUCTION ENVELOPE
5	CONOCARPUS ERECTUS	SILVER BUTTONWOOD	5"	8'	10"	REMOVE	LOCATION OF PLANT MATERIAL CONFLICTS WITH CONSTRUCTION ENVELOPE
6	FICUS BENJAMINA	WEeping FIG	6"	22'	22'	REMOVE	LOCATION OF PLANT MATERIAL CONFLICTS WITH CONSTRUCTION ENVELOPE
7	PTYCHOSPERMA ELEGANS	SOLITAIRE PALM	2"	22'	8'	REMOVE	LOCATION OF PLANT MATERIAL CONFLICTS WITH CONSTRUCTION ENVELOPE
8	PTYCHOSPERMA ELEGANS	SOLITAIRE PALM	2"	22'	8'	REMOVE	LOCATION OF PLANT MATERIAL CONFLICTS WITH CONSTRUCTION ENVELOPE
9	FICUS BENJAMINA	WEeping FIG	6"	22'	22'	REMOVE	LOCATION OF PLANT MATERIAL CONFLICTS WITH CONSTRUCTION ENVELOPE
10	PTYCHOSPERMA ELEGANS	SOLITAIRE PALM	2"	22'	8'	REMOVE	LOCATION OF PLANT MATERIAL CONFLICTS WITH CONSTRUCTION ENVELOPE
11	PHOENIX CANARIENSIS	CANARY ISLAND DATE PALM	20"	20'	30'	REMOVE	LOCATION OF PLANT MATERIAL CONFLICTS WITH CONSTRUCTION ENVELOPE
12	FICUS BENJAMINA	WEeping FIG	6"	10'	18'	REMOVE	LOCATION OF PLANT MATERIAL CONFLICTS WITH CONSTRUCTION ENVELOPE
13	CREPE HIBISCUS	HIBISCUS ROSA-SINENSIS	4"	10'	10'	REMOVE	LOCATION OF PLANT MATERIAL CONFLICTS WITH CONSTRUCTION ENVELOPE
14	FICUS BENJAMINA	WEeping FIG	6"	10'	18'	REMOVE	LOCATION OF PLANT MATERIAL CONFLICTS WITH CONSTRUCTION ENVELOPE
15	FICUS BENJAMINA	WEeping FIG	6"	10'	18'	REMOVE	LOCATION OF PLANT MATERIAL CONFLICTS WITH CONSTRUCTION ENVELOPE
16	FICUS BENJAMINA	WEeping FIG	6"	10'	18'	REMOVE	LOCATION OF PLANT MATERIAL CONFLICTS WITH CONSTRUCTION ENVELOPE
17	FICUS BENJAMINA	WEeping FIG	6"	10'	18'	REMOVE	LOCATION OF PLANT MATERIAL CONFLICTS WITH CONSTRUCTION ENVELOPE
18	FICUS BENJAMINA	WEeping FIG	6"	10'	18'	REMOVE	LOCATION OF PLANT MATERIAL CONFLICTS WITH CONSTRUCTION ENVELOPE
19	FICUS BENJAMINA	WEeping FIG	6"	10'	18'	REMOVE	LOCATION OF PLANT MATERIAL CONFLICTS WITH CONSTRUCTION ENVELOPE
20	PTYCHOSPERMA ELEGANS	SOLITAIRE PALM	2"	15'	10'	REMOVE	LOCATION OF PLANT MATERIAL CONFLICTS WITH CONSTRUCTION ENVELOPE
21	CLUSIA ROSEA	PITCH APPLE	10"	15'	10'	REMOVE	LOCATION OF PLANT MATERIAL CONFLICTS WITH CONSTRUCTION ENVELOPE
22	BOUGAINVILLEA SPP.	BOUGAINVILLEA	8"	14'	12'	REMOVE	LOCATION OF PLANT MATERIAL CONFLICTS WITH CONSTRUCTION ENVELOPE
23	BOUGAINVILLEA SPP.	BOUGAINVILLEA	8"	14'	12'	REMOVE	LOCATION OF PLANT MATERIAL CONFLICTS WITH CONSTRUCTION ENVELOPE
24	ROYSTONIA REGIA	ROYAL PALM	14"	42'	24'	REMOVE	LOCATION OF PLANT MATERIAL CONFLICTS WITH CONSTRUCTION ENVELOPE
25	ROYSTONIA REGIA	ROYAL PALM	14"	42'	24'	REMOVE	LOCATION OF PLANT MATERIAL CONFLICTS WITH CONSTRUCTION ENVELOPE
26	PHOENIX ROEBELII	PYGMY DATE PALM	4"	8'	10'	REMOVE	LOCATION OF PLANT MATERIAL CONFLICTS WITH CONSTRUCTION ENVELOPE
27	ROYSTONIA REGIA	ROYAL PALM	14"	42'	24'	REMOVE	LOCATION OF PLANT MATERIAL CONFLICTS WITH CONSTRUCTION ENVELOPE
28	ROYSTONIA REGIA	ROYAL PALM	14"	42'	24'	REMOVE	LOCATION OF PLANT MATERIAL CONFLICTS WITH CONSTRUCTION ENVELOPE
29	PHOENIX ROEBELII	PYGMY DATE PALM	4"	8'	10'	REMOVE	LOCATION OF PLANT MATERIAL CONFLICTS WITH CONSTRUCTION ENVELOPE
30	ROYSTONIA REGIA	ROYAL PALM	14"	42'	24'	REMOVE	LOCATION OF PLANT MATERIAL CONFLICTS WITH CONSTRUCTION ENVELOPE
31	ROYSTONIA REGIA	ROYAL PALM	14"	30'	24'	REMOVE	LOCATION OF PLANT MATERIAL CONFLICTS WITH CONSTRUCTION ENVELOPE
32	WASHINGTONIA ROBUSTA	MEXICAN FAN PALM	10"	50'	10'	REMOVE	LOCATION OF PLANT MATERIAL CONFLICTS WITH CONSTRUCTION ENVELOPE
33	PHOENIX CANARIENSIS	CANARY ISLAND DATE PALM	20"	20'	30'	REMOVE	LOCATION OF PLANT MATERIAL CONFLICTS WITH CONSTRUCTION ENVELOPE
34	PHOENIX CANARIENSIS	CANARY ISLAND DATE PALM	20"	20'	30'	REMOVE	LOCATION OF PLANT MATERIAL CONFLICTS WITH CONSTRUCTION ENVELOPE

MITIGATION CALCULATIONS

TOTAL TREE DBH REMOVED = 29" DBH (REQUIRES 5 TREES (4" DBH, 16' HT, 8' SPR.)
 TOTAL PALMS REMOVED = 14 PALMS (REQUIRES 14 TREES (2" DBH, 12' HT, 6' SPR.)

MITIGATION STRATEGY

THE PROPOSED LANDSCAPE PLAN MUST MITIGATE THE REMOVAL OF 29" OF TREE DBH AND 14 PALMS.

TREE MITIGATION REQUIREMENT:

- 19 MITIGATION TREES
- 5 TREES (4" DBH, 16' HT, 8' SPR.)
- 14 TREES (2" DBH, 12' HT, 6' SPR.)

LANDSCAPE PLANS PROPOSE:

- 13 MITIGATION TREES
- 8 TREES (4" DBH, 16' HT, 8' SPR.)
- 5 TREES (2" DBH, 12' HT, 6' SPR.)
- AND \$6,000 CONTRIBUTION TO TREE TRUST FUND

Rev.	Date	Rev.	Date

ALL DRAWINGS AND WRITTEN MATERIAL APPEARING HEREIN CONSTITUTE THE ORIGINAL AND UNPUBLISHED WORK OF KOEB KAMP ARCHITECTURE, INC. AND MAY NOT BE REPRODUCED, COPIED, OR DISCLOSED WITHOUT THE EXPRESS WRITTEN CONSENT OF KOEB KAMP ARCHITECTURE, INC. © 2022

NEW RESIDENCE
 1601 W 24TH STREET, SUNSET 3,
 MIAMI BEACH, FL, 33140

Owner:
 Name
 Address
 Address
 Tel:
 Email

Design Architect:



WAYNE SWADRON
architecture | interiors | gardens

160 Pears Avenue, Suite 210, Toronto, Ontario M5R 3P8
 t 416 486 4800 f 416 486 6808 www.wayneswadron.com

Landscape Architect:
 Nielsen Landscape Architects, LLC
 1447 Cypress Drive, Suite 2
 Jupiter, Florida 33469 USA
 Tel: +1(561) 402 9414



TREE DISPOSITION SCHEDULE

Date	MAR 2025	Sheet No.	L-102
Scale	1/16" = 1'-0" @ 11" x 17"		
Project	1601 W 24 STREET, MIAMI BEACH, FL		

REFERENCE IMAGERY



SEAL (S TYLER NIELSEN - LA6667067)



Rev.	Date	Rev.	Date

ALL DRAWINGS AND WRITTEN MATERIAL APPEARING HEREIN CONSTITUTE THE ORIGINAL AND UNPUBLISHED WORK OF KOBI KARP ARCHITECTURE, INC. AND MAY NOT BE DUPLICATED, USED, OR DISCLOSED WITHOUT THE EXPRESS WRITTEN CONSENT OF KOBI KARP ARCHITECTURE, INC. AIA, 02/2022

NEW RESIDENCE
 1601 W 24TH STREET, SUNSET 3,
 MIAMI BEACH, FL, 33140

Owner:
 Name
 Address
 Address
 Address
 Tel:
 Email

Design Architect:



WAYNE SWADRON
architecture | interiors | gardens
 160 Pears Avenue, Suite 210, Toronto, Ontario M5R 3P8
 +1 416 486 4800 / +1 416 486 6808 www.wayneswadron.com

Landscape Architect:
 Nielsen Landscape Architects, LLC
 1447 Cypress Drive, Suite 2
 Jupiter, Florida 33469 USA
 Tel: +1(561) 402 9414



TREE REFERENCE IMAGES

Date	MAR 2025	Sheet No.	
Scale	1/16" = 1'-0" @ 11" x 17"		
Project	1601 W 24 STREET, MIAMI BEACH, FL		L-103



Rev.	Date	Rev.	Date

ALL DRAWINGS AND WRITTEN MATERIAL APPEARING HEREIN CONSTITUTE THE ORIGINAL AND UNPUBLISHED WORK OF KOBI KARP ARCHITECTURE, INC. AND MAY NOT BE REPRODUCED, COPIED, OR DISCLOSED WITHOUT THE EXPRESS WRITTEN CONSENT OF KOBI KARP ARCHITECTURE, INC. 04/2022

NEW RESIDENCE
 1601 W 24TH STREET, SUNSET 3,
 MIAMI BEACH, FL, 33140

Owner:
 Name
 Address
 Address
 Tel:
 Email

Design Architect:



WAYNE SWADRON
architecture | interiors | gardens

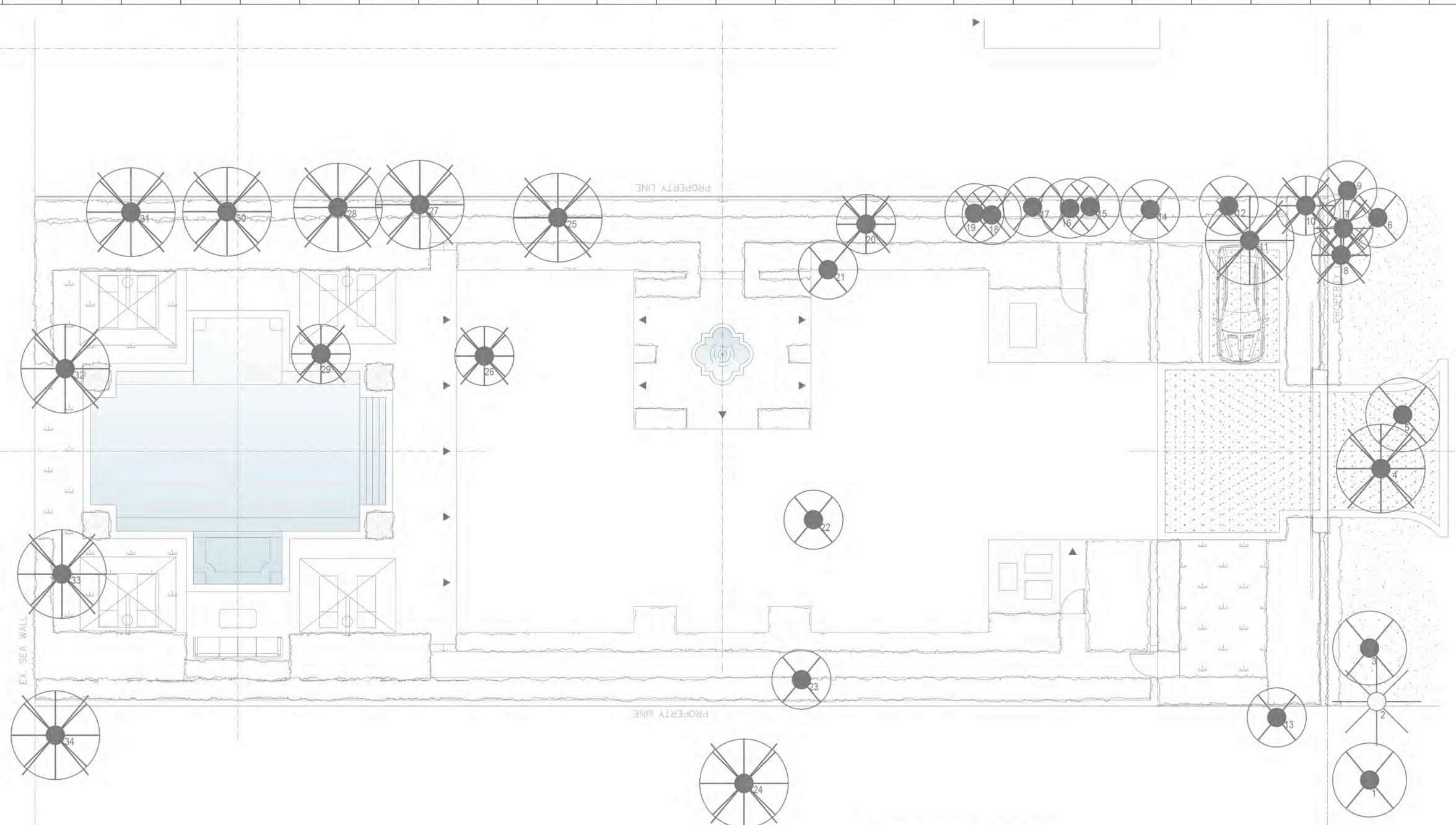
160 Pears Avenue, Suite 210, Toronto, Ontario M5R 3P8
 t 416 486 4800 f 416 486 6808 www.wayneswadron.com

Landscape Architect:
 Nielsen Landscape Architects, LLC
 1447 Cypress Drive, Suite 2
 Jupiter, Florida 33469 USA
 Tel: +1(561) 402 9414



TREE DISPOSITION PLAN

Date	MAR 2025	Sheet No.	L-104
Scale	1/16" = 1'-0" @ 11" x 17"		
Project	1601 W 24 STREET, MIAMI BEACH, FL		

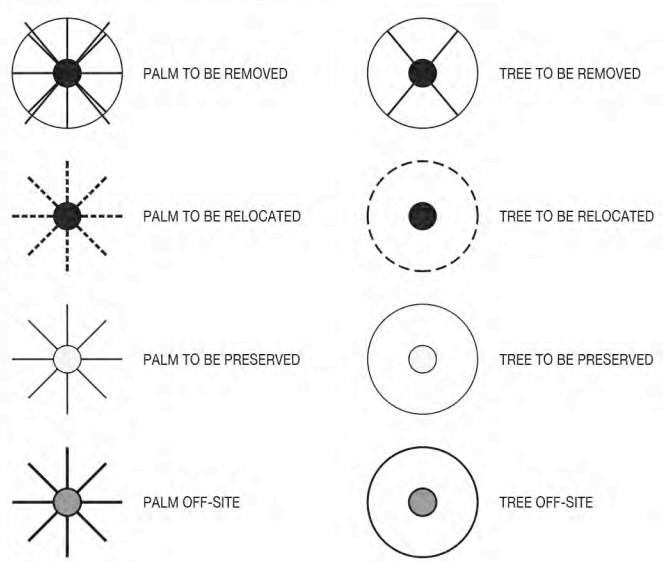


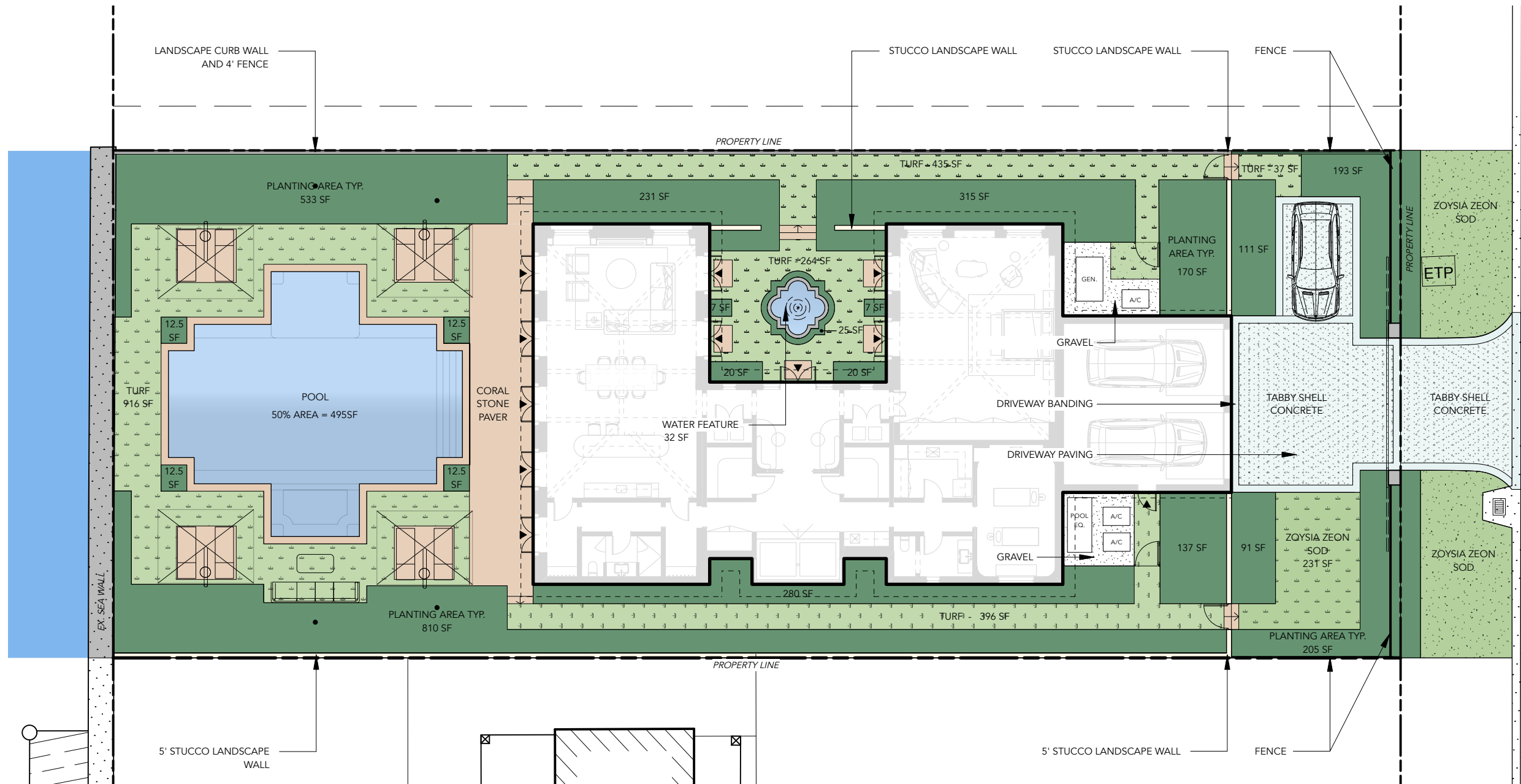
TREE DISPOSITION SCHEDULE

#	BOTANICAL NAME	COMMON NAME	ACTION
1	CONOCARPUS ERECTUS	SILVER BUTTWOOD	REMOVE
2	ROYSTONEA REGIA	ROYAL PALM	PRESERVE
3	CONOCARPUS ERECTUS	SILVER BUTTWOOD	REMOVE
4	COCOS NUCIFERA	COCONUT PALM	REMOVE
5	CONOCARPUS ERECTUS	SILVER BUTTWOOD	REMOVE
6	FICUS BENJAMINA	WEeping FIG	REMOVE
7	PTYCHOSPERMA ELEGANS	SOLITAIRE PALM	REMOVE
8	PTYCHOSPERMA ELEGANS	SOLITAIRE PALM	REMOVE
9	FICUS BENJAMINA	WEeping FIG	REMOVE
10	PTYCHOSPERMA ELEGANS	SOLITAIRE PALM	REMOVE
11	PHOENIX CANARIENSIS	CANARY ISLAND DATE PALM	REMOVE
12	FICUS BENJAMINA	WEeping FIG	REMOVE
13	CREPE HIBISCUS	HIBISCUS ROSA-SINENSIS	REMOVE
14	FICUS BENJAMINA	WEeping FIG	REMOVE
15	FICUS BENJAMINA	WEeping FIG	REMOVE
16	FICUS BENJAMINA	WEeping FIG	REMOVE
17	FICUS BENJAMINA	WEeping FIG	REMOVE

#	BOTANICAL NAME	COMMON NAME	ACTION
18	FICUS BENJAMINA	WEeping FIG	REMOVE
19	FICUS BENJAMINA	WEeping FIG	REMOVE
20	PTYCHOSPERMA ELEGANS	SOLITAIRE PALM	REMOVE
21	CLUSIA ROSEA	PITCH APPLE	REMOVE
22	BOUGAINVILLEA SPP.	BOUGAINVILLEA	REMOVE
23	BOUGAINVILLEA SPP.	BOUGAINVILLEA	REMOVE
24	ROYSTONEA REGIA	ROYAL PALM	REMOVE
25	ROYSTONEA REGIA	ROYAL PALM	REMOVE
26	PHOENIX ROEBELENI	PYGMY DATE PALM	REMOVE
27	ROYSTONEA REGIA	ROYAL PALM	REMOVE
28	ROYSTONEA REGIA	ROYAL PALM	REMOVE
29	PHOENIX ROEBELENI	PYGMY DATE PALM	REMOVE
30	ROYSTONEA REGIA	ROYAL PALM	REMOVE
31	ROYSTONEA REGIA	ROYAL PALM	REMOVE
32	WASHINGTONIA ROBUSTA	MEXICAN FAN PALM	REMOVE
33	PHOENIX CANARIENSIS	CANARY ISLAND DATE PALM	REMOVE
34	PHOENIX CANARIENSIS	CANARY ISLAND DATE PALM	REMOVE

TREE DISPOSITION LEGEND





ZOYSIA ZEON GRASS

COLOUR: GREEN
 FINISH: NA
 DIMS: NA
 SOURCE: TBD



CORAL STONE PAVER

COLOUR: WHITE TONE
 FINISH: BRUSHED
 DIMS: 12" x 24" x 3/4" THICK
 SOURCE: TBD



GRAVEL

COLOUR: WHITE
 FINISH: SCREENED
 DIMS: NA
 SOURCE: TBD



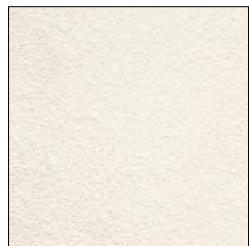
WATER (POOL)

COLOUR: MIAMI BLUE POOL PLASTER
 FINISH: NA
 DIMS: NA
 SOURCE: TBD



TABBY SHELL CONCRETE W/ BANDING

COLOUR: WHITE W/ INTEGRAL DYE 'EVENING BEIGE'
 FINISH: NA
 DIMS: NA
 SOURCE: TBD
 *SOLAR REFLECTIVE INDEX 0.7 SRI



STUCCO FOR LANDSCAPE WALLS

COLOUR: WHITE
 FINISH: NA
 DIMS: NA
 SOURCE: TBD

MATERIAL LEGEND

- PLANTING AREA TYPICAL
- ZOYSIA ZEON SOD
- WATER
- CORAL STONE PAVER
- TABBY SHELL CONCRETE
- GRAVEL
- STUCCO LANDSCAPE WALL

LANDSCAPE OPEN SPACE

PLANTING AREAS - 3,229 SF
 SOD / TURF - 2,281 SF
 POOL / FOUNTAIN - 527 SF
LANDSCAPE OPEN SPACE = 6,037 SF

Rev.	Date	Rev.	Date

ALL DRAWINGS AND WRITTEN MATERIAL APPEARING HEREIN CONSTITUTE THE ORIGINAL AND UNPUBLISHED WORK OF KOB KARP AIA, AND MAY NOT BE DUPLICATED, USED, OR DISCLOSED WITHOUT THE EXPRESS WRITTEN CONSENT OF KOB KARP ARCHITECTURE & INTERIOR DESIGN, P.C. AIA, © 2022

NEW RESIDENCE
 1601 W 24TH STREET, SUNSET 3,
 MIAMI BEACH, FL, 33140

Owner:
 Name:
 Address:
 Address:
 Tel:
 Email:

Design Architect:



WAYNE SWADRON
architecture | interiors | gardens
 160 Pears Avenue, Suite 210, Toronto, Ontario M5R 3P8
 +1 416 486 4800 / 416 486 6808 www.wayneswadron.com

Landscape Architect:
 Nielsen Landscape Architects, LLC
 1447 Cypress Drive, Suite 2
 Jupiter, Florida 33469 USA
 Tel: +1(561) 402 9414



**LANDSCAPE PLAN,
 MATERIAL & NOTES**

Date	MAR 2025	Sheet No.	L-300
Scale	1/16" = 1'-0" @ 11" x 17"		
Project	1601 W 24 STREET, MIAMI BEACH, FL		

CITY OF MIAMI BEACH LANDSCAPE LEGEND

INFORMATION REQUIRED TO BE PERMANENTLY AFFIXED TO PLANS

Zoning District RS3 Lot Area 12,075 SF Acres 0.27

OPEN SPACE

	REQUIRED/ ALLOWED	PROVIDED
A. Square feet of required Open Space as indicated on site plan: Lot Area = <u>12,075</u> s.f. x <u>50</u> % = <u>6,037</u> s.f.	<u>6,037</u>	<u>6,037</u>
B. Square feet of parking lot open space required as indicated on site plan: Number of parking spaces <u>N/A</u> x 10 s.f. parking space =	<u>N/A</u>	<u>N/A</u>
C. Total square feet of landscaped open space required: A+B=	<u>6,037</u>	<u>6,037</u>

LAWN AREA CALCULATION

A. Square feet of landscaped open space required	<u>6,037</u>	<u>6,037</u>
B. Maximum lawn area (sod) permitted= <u>50</u> % x <u>6,037</u> s.f.	<u>3,018.5</u>	<u>2,281</u>

TREES

* A. Number of trees required per lot or net lot acre, less existing number of trees meeting minimum requirements= <u>N/A</u> trees x <u>N/A</u> net lot acres - number of existing trees=	<u>11</u>	<u>11</u>
B. % Natives required: Number of trees provided x 30% =	<u>4</u>	<u>6</u>
C. % Low maintenance / drought and salt tolerant required: Number of trees provided x 50%=	<u>6</u>	<u>11</u>
D. Street Trees (maximum average spacing of 20' o.c.) <u>69</u> linear feet along street divided by 20'=	<u>4</u>	<u>4</u>
E. Street tree species allowed directly beneath power lines: (maximum average spacing of 20' o.c.): <u>N/A</u> linear feet along street divided by 20'=	<u>N/A</u>	<u>N/A</u>

SHRUBS

A. Number of shrubs required: Sum of lot and street trees required x 12=	<u>180</u>	<u>207</u>
B. % Native shrubs required: Number of shrubs provided x 50%=	<u>104</u>	<u>134</u>

LARGE SHRUBS OR SMALL TREES

A. Number of large shrubs or small trees required: Number of required shrubs x 10%=	<u>18</u>	<u>18</u>
B. % Native large shrubs or small trees required: Number of large shrubs or small trees provided x 50%=	<u>9</u>	<u>16</u>

*RS1 - RS4 Residential Lots (TREE REQUIREMENTS):
5 Trees + 1 Tree for every 1,000 square feet for lots over 6,000 square feet total.

Rev.	Date	Rev.	Date

ALL DRAWINGS AND WRITTEN MATERIAL APPEARING HEREIN CONSTITUTE THE ORIGINAL AND UNPUBLISHED WORK OF KOB KARP AIA, AND MAY NOT BE DUPLICATED, USED, OR DISCLOSED WITHOUT THE EXPRESS WRITTEN CONSENT OF KOB KARP ARCHITECTURE & INTERIOR DESIGN, P.C. AIA, © 2022

NEW RESIDENCE
1601 W 24TH STREET, SUNSET 3,
MIAMI BEACH, FL, 33140

Owner:
Name
Address
Address
Tel:
Email

Design Architect:



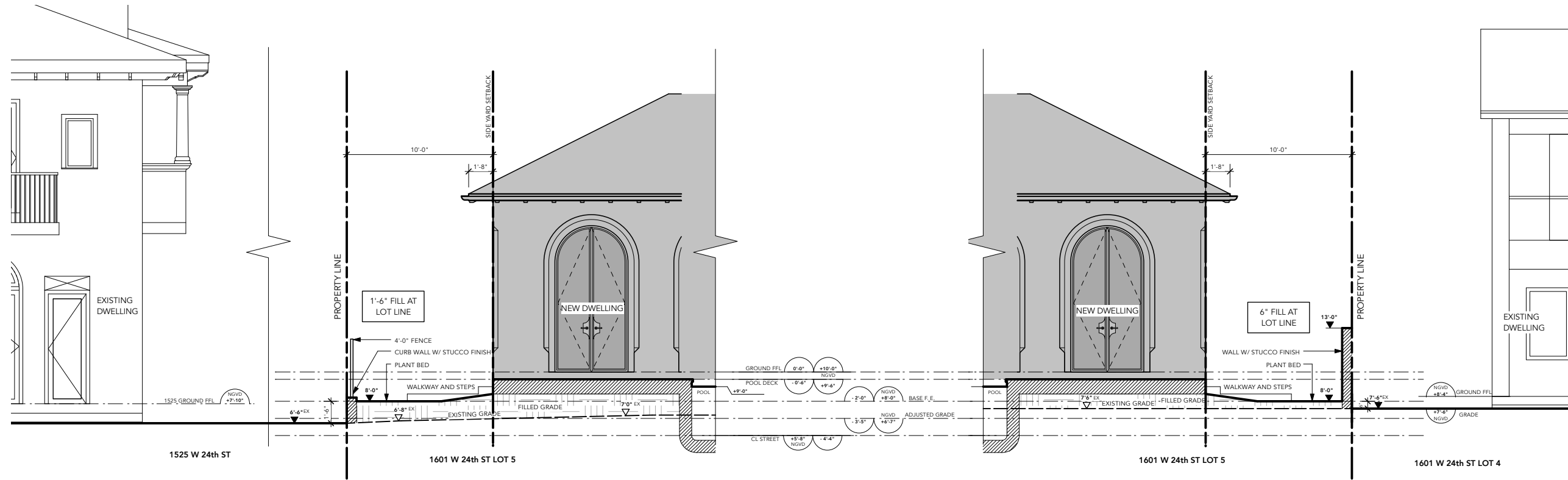
WAYNE SWADRON
architecture | interiors | gardens
160 Pears Avenue, Suite 210, Toronto, Ontario M5R 3P8
r 416 486 4800 f 416 486 6808 www.wayneswadron.com

Landscape Architect:
Nielsen Landscape Architects, LLC
1447 Cypress Drive, Suite 2
Jupiter, Florida 33469 USA
Tel: +1(561) 402 9414

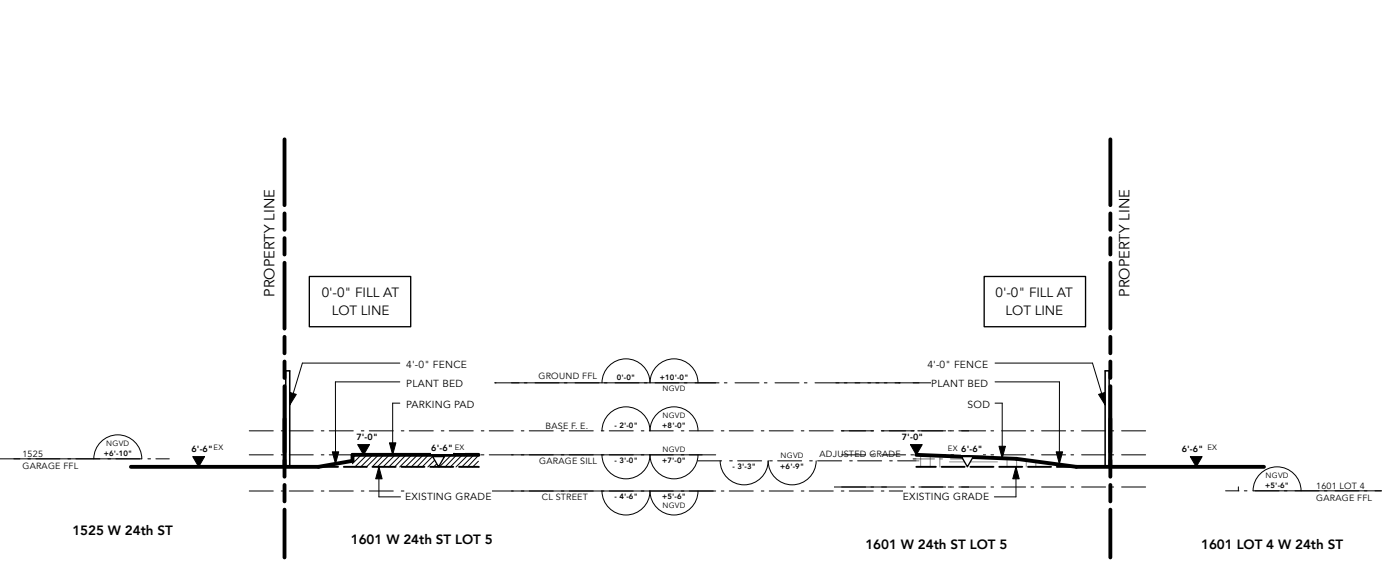


LANDSCAPE LEGEND

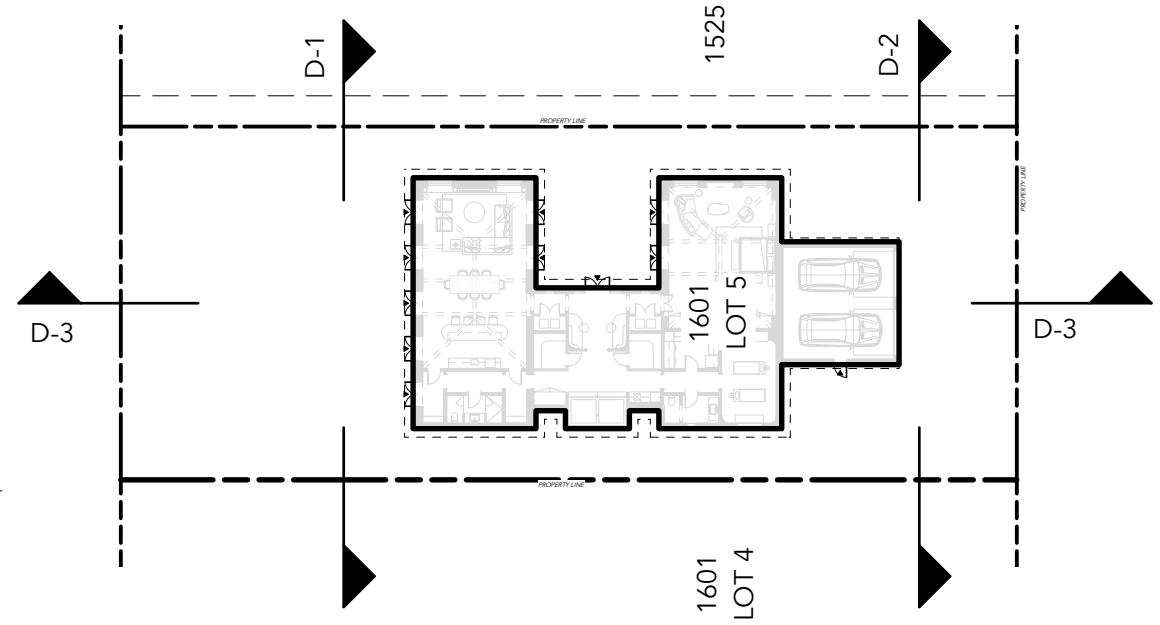
Date	MAR 2025	Sheet No.	L-301
Scale	1/16" = 1'-0" @ 11" x 17"		
Project	1601 W 24 STREET, MIAMI BEACH, FL		



1 SIDE YARD SECTIONS - LOOKING SOUTH
L-600 Scale: 1/8" = 1'-0"



2 FRONT YARD SECTIONS - FRONT STREET YARD LOOKING SOUTH
L-600 Scale: 1/8" = 1'-0"



SECTION KEY PLAN

Rev.	Date	Rev.	Date

ALL DRAWINGS AND WRITTEN MATERIAL APPEARING HEREIN CONSTITUTE THE ORIGINAL AND UNPUBLISHED WORK OF KOB KARP AIA, AND MAY NOT BE DUPLICATED, USED, OR DISCLOSED WITHOUT THE EXPRESS WRITTEN CONSENT OF KOB KARP ARCHITECTURE & INTERIOR DESIGN, P.C. AIA, © 2022

NEW RESIDENCE
1601 W 24TH STREET, SUNSET 3,
MIAMI BEACH, FL, 33140

Owner:
Name
Address
Address
Tel:
Email

Design Architect:



WAYNE SWADRON
architecture | interiors | gardens

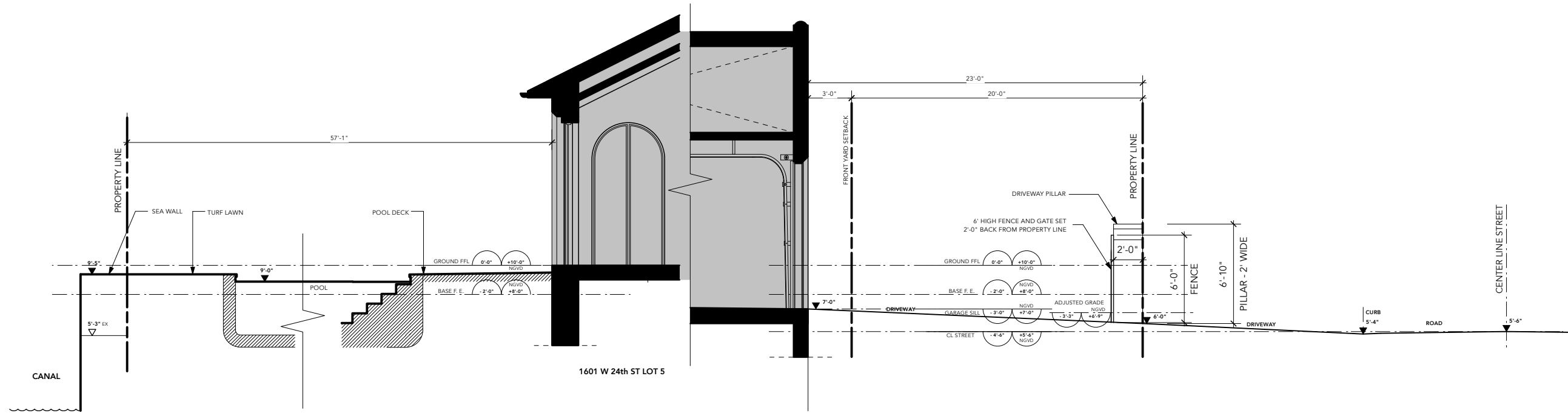
160 Pears Avenue, Suite 210, Toronto, Ontario M5R 3P8
+416 486 4800 / +416 486 6808 www.wayneswadron.com

Landscape Architect:
Nielsen Landscape Architects, LLC
1447 Cypress Drive, Suite 2
Jupiter, Florida 33469 USA
Tel: +1(561) 402 9414

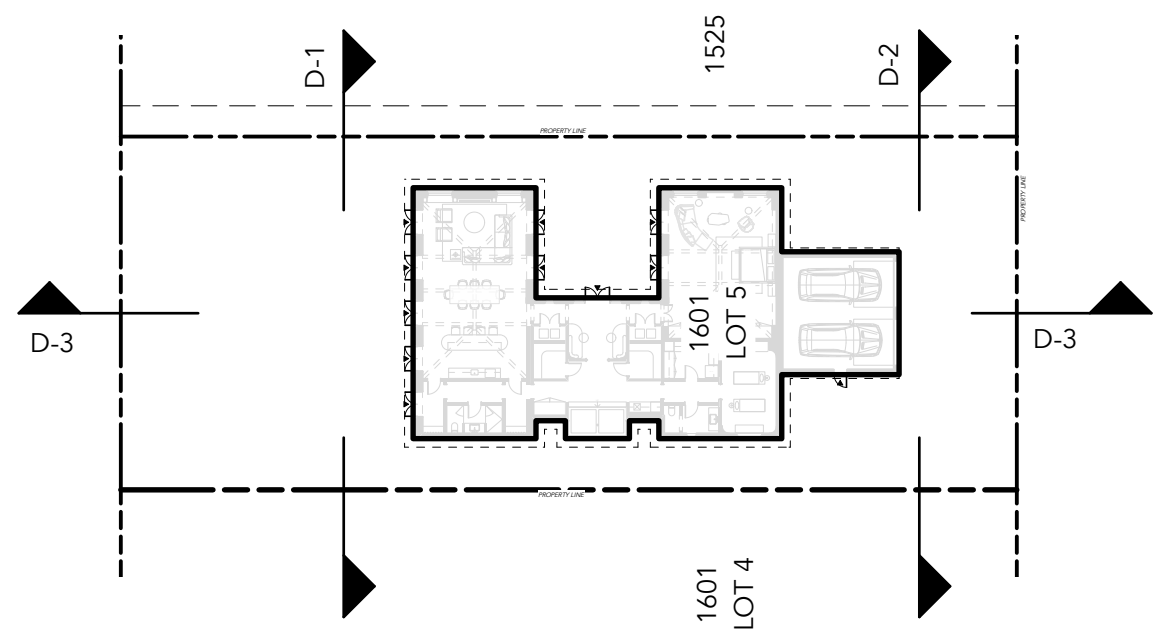


LANDSCAPE SIDE YARD SECTIONS

Date	MAR 2025	Sheet No.	L-600
Scale	1/16" = 1'-0" @ 11" x 17"		
Project	1601 W 24 STREET, MIAMI BEACH, FL		



3 FRONT TO REAR YARD SECTION
L-601 Scale: 1/8" = 1'-0"



SECTION KEY PLAN

Rev.	Date	Rev.	Date

ALL DRAWINGS AND WRITTEN MATERIAL APPEARING HEREIN CONSTITUTE THE ORIGINAL AND UNPUBLISHED WORK OF KOEB KAUF ARCHITECTURE, INC. AND MAY NOT BE DUPLICATED, USED, OR DISCLOSED WITHOUT THE EXPRESS WRITTEN CONSENT OF KOEB KAUF ARCHITECTURE, INC. AIA 91 2022

NEW RESIDENCE
1601 W 24TH STREET, SUNSET 3,
MIAMI BEACH, FL, 33140

Owner:
Name
Address
Address
Tel:
Email

Design Architect:



WAYNE SWADRON
architecture | interiors | gardens

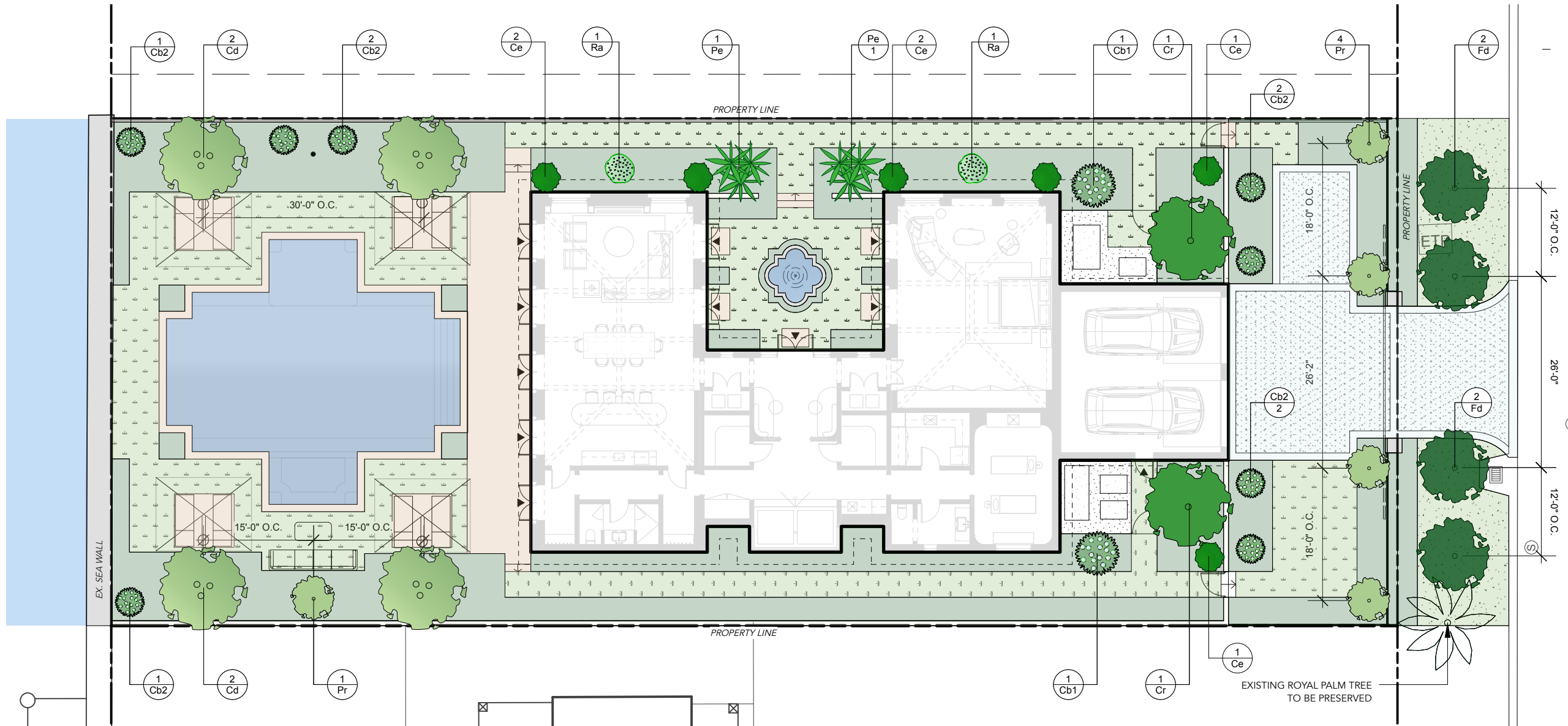
160 Pears Avenue, Suite 210, Toronto, Ontario M5R 3P8
+416 486 4800 / 416 486 6808 www.wayneswadron.com

Landscape Architect:
Nielsen Landscape Architects, LLC
1447 Cypress Drive, Suite 2
Jupiter, Florida 33469 USA
Tel: +1(561) 402 9414



LANDSCAPE YARD SECTIONS

Date	MAR 2025	Sheet No.	L-601
Scale	1/16" = 1'-0" @ 11" x 17"		
Project	1601 W 24 STREET, MIAMI BEACH, FL		



Rev.	Date	Rev.	Date
1	ISSUED FOR PERM	2025-03-14	

ALL DRAWINGS AND WRITTEN MATERIAL APPEARING HEREIN CONSTITUTE THE ORIGINAL AND UNPUBLISHED WORK OF KOB KARP ARCHITECTURE, INC. AND MAY NOT BE DUPLICATED, USED, OR DISCLOSED WITHOUT THE EXPRESS WRITTEN CONSENT OF KOB KARP ARCHITECTURE, INC. AIA 92 2022

NEW RESIDENCE
 1601 W 24TH STREET, SUNSET 3,
 MIAMI BEACH, FL, 33140

Owner:
 Name
 Address
 Address
 Tel:
 Email

Design Architect:



WAYNE SWADRON
architecture | interiors | gardens
 160 Pears Avenue, Suite 210, Toronto, Ontario M5R 3P8
 r 416 486 4800 f 416 486 6808 www.wayneswadron.com

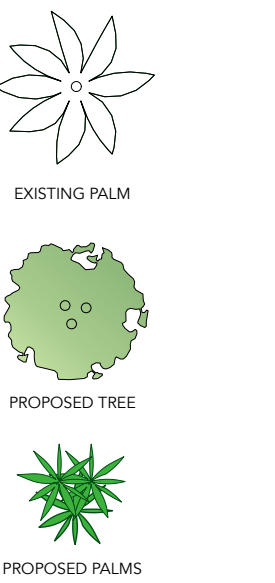
Landscape Architect:
 Nielsen Landscape Architects, LLC
 1447 Cypress Drive, Suite 2
 Jupiter, Florida 33469 USA
 Tel: +1(561) 402 9414



TREE & PALM PLANTING PLAN

Date	MAR 2025	Sheet No.	L-701
Scale	1/16" = 1'-0" @ 11" x 17"		
Project	1601 W 24 STREET, MIAMI BEACH, FL		

PLANTING LEGEND



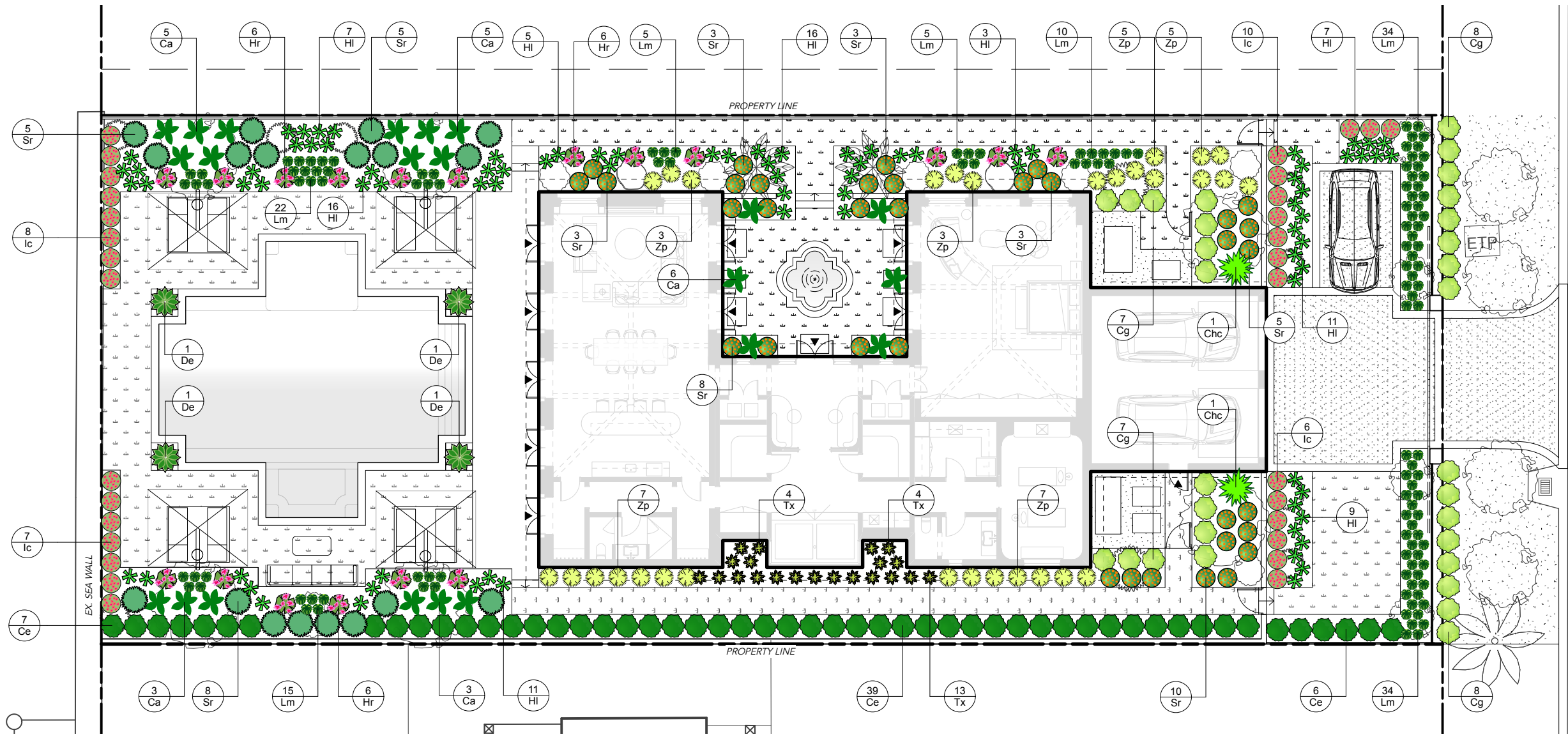
PLANTING SCHEDULE

ID	Qty	Botanical Name	Common Name	Scheduled Size	Canopy / Spread	Native	Low Maintenance / Drought Tolerant	Salt Tolerant
Plant List								
CANOPY TREES								
Cd	4	Coccoloba diversifolia	Pigeon Plum	200 gal., 4" DBH, 16' ht.	Min. 6' dia.	YES	YES	YES
Cr	2	Clusia rosea	Pitch Apple	200 gal., 18' ht., Character Trunk	Min. 6' dia.	YES	YES	YES
Fd	4	Filicium decipiens	Japanese Fern Tree	200 gal., 4" DBH, 16' ht., Single Leader. Min. Clear Trunk of 4"	Min. 6' dia.	NO	YES	YES
Pr	5	Pimenta racemosa	Bay Rum	45 gal. 12' ht., Single Leader Standard	Min. 6' dia.	NO	YES	YES
TOTAL CANOPY TREES PROVIDED 15								
STREETSCAPE CANOPY TREES 4								
ON SITE CANOPY TREES 11								
# OF NATIVE (ON SITE) 6 % OF NATIVE CANOPY TREES PROVIDED ON SITE: 54.5%(6/11)								
PALMS								
Pe	2	Ptychosperma elegans	Alexander Palm	12' tall, 2-3 multi-stem trunk		NO		
SMALL ORNAMENTAL TREES / LARGE SHRUBS								
Cb1	2	Cordia Boissieri	White Geiger	100 gal., 4" DBH, 14' ht., Single Leader	6' dia.	YES		
Cb2	8	Cordia Boissieri	White Geiger	45 gal., 4" DBH, 10' ht., Single Leader	Min. 4' dia.	YES		
Ce	6	Conocarpus erectus	Green Buttonwood	6' ht., Bush Form	Min. 4' dia.	YES		
Ra	2	Rademachera Kunming	Dwarf Tree Jasmine	25 gal., 6' ht., Bush Form	Min. 4' dia.	NO		
TOTAL SMALL ORNAMENTAL TREES / LARGE SHRUBS PROVIDED 18								
# OF NATIVE (ON SITE ONLY) 16 % OF NATIVE SMALL ORNAMENTAL TREES / LARGE SHRUBS PROVIDED ON SITE: 88.9%(16/18)								
							% OF LOW MAINTENANCE / DROUGHT TOLERANT TREES: 100% (11/11)	
							% OF SALT TOLERANT TREES: 100% (11/11)	

CITY OF MIAMI BEACH
LANDSCAPE LEGEND
 INFORMATION REQUIRED TO BE PERMANENTLY AFFIXED TO PLANS
 Zoning District **RS3** Lot Area **12,075 SF** Acres **0.27**

	REQUIRED/ALLOWED	PROVIDED
OPEN SPACE		
A. Square feet of required Open Space as indicated on site plan: Lot Area = 12,075 s.f. x 50% = 6,037 s.f.	6,037	6,037
B. Square feet of parking lot open space required as indicated on site plan: Number of parking spaces N/A x 10 s.f. parking space =	N/A	N/A
C. Total square feet of landscaped open space required: A-B=	6,037	6,037
LAWN AREA CALCULATION		
A. Square feet of landscaped open space required	6,037	6,037
B. Maximum lawn area (sod) permitted: 50% x 6,037 s.f.	3,018.5	2,281
TREES		
A. Number of trees required per lot or net lot acre, less existing number of trees meeting minimum requirements: N/A trees x N/A net lot acres - number of existing trees=	11	11
B. % Natives required: Number of trees provided x 30% =	4	6
C. % Low maintenance / drought and salt tolerant required: Number of trees provided x 50% =	6	11
D. Street Trees (maximum average spacing of 20' o.c.) 89 linear feet along street divided by 20' =	4	4
E. Street tree species allowed directly beneath power lines: (maximum average spacing of 20' o.c.): N/A linear feet along street divided by 20' =	N/A	N/A
SHRUBS		
A. Number of shrubs required: Sum of lot and street trees required x 12=	180	207
B. % Native shrubs required: Number of shrubs provided x 50% =	104	134
LARGE SHRUBS OR SMALL TREES		
A. Number of large shrubs or small trees required: Number of required shrubs x 10% =	18	18
B. % Native large shrubs or small trees required: Number of large shrubs or small trees provided x 50% =	9	16

*RS1 - RS4 Residential Lots (TREE REQUIREMENTS):
 5 Trees + 1 Tree for every 1,000 square feet for lots over 6,000 square feet total.



Rev.	Date	Rev.	Date
1	ISSUED FOR PER	2025-03-14	

ALL DRAWINGS AND WRITTEN MATERIAL APPEARING HEREIN CONSTITUTE THE ORIGINAL AND UNPUBLISHED WORK OF KOBI KARP AIA, AND MAY NOT BE DUPLICATED, USED, OR DISCLOSED WITHOUT THE EXPRESS WRITTEN CONSENT OF KOBI KARP ARCHITECTURE & INTERIOR DESIGN, INC. AIA, © 2022

NEW RESIDENCE
 1601 W 24TH STREET, SUNSET 3,
 MIAMI BEACH, FL, 33140

Owner:
 Name
 Address
 Address
 Address
 Tel:
 Email

Design Architect:



WAYNE SWADRON
architecture | interiors | gardens
 160 Pears Avenue, Suite 210, Toronto, Ontario M5R 3P8
 + 416 486 4800 / 416 486 6808 www.wayneswadron.com

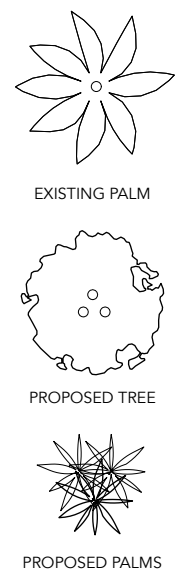
Landscape Architect:
 Nielsen Landscape Architects, LLC
 1447 Cypress Drive, Suite 2
 Jupiter, Florida 33469 USA
 Tel: +1(561) 402 9414



UNDERSTORY PLANTING PLAN

Date	MAR 2025	Sheet No.	L-702
Scale	1/16" = 1'-0" @ 11" x 17"		
Project	1601 W 24 STREET, MIAMI BEACH, FL		

PLANTING LEGEND



PLANTING SCHEDULE

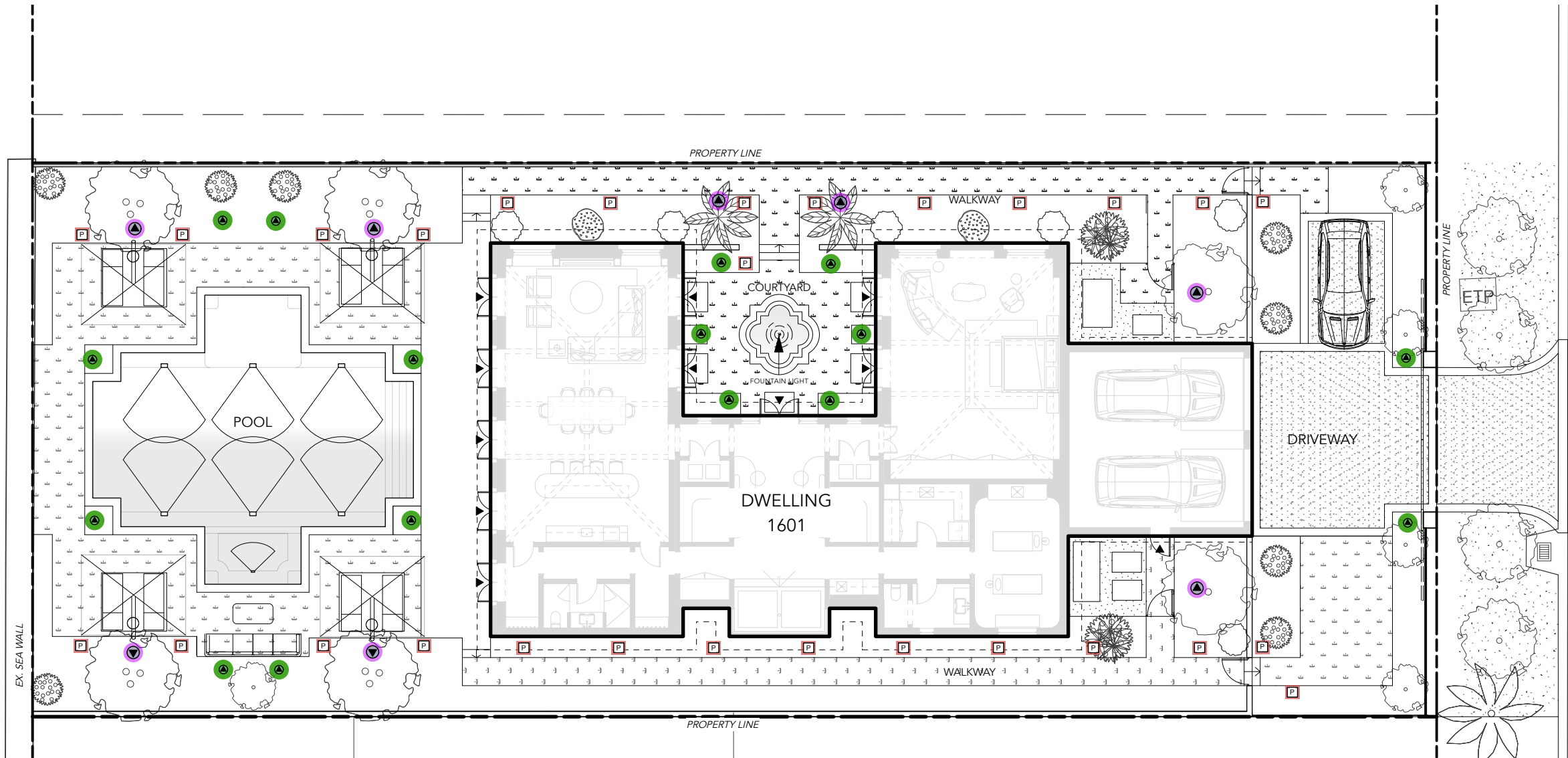
Plant List

ID	Qty	Botanical Name	Common Name	Scheduled Size	Native
SHRUBS					
Ca	22	California Alocasia	Alocasia odora 'California'	7 gal. 3' Ht.	NO
Ce	52	Conocarpus erectus	Green Buttonwood	25 gal. 6' Ht., Bush Form	YES
Cg	30	Clusia guttifea	Little Leaf Clusia	3 gal. 3' Ht.	NO
De	4	Dioone edule	Chestnut Dioon	15 gal. 3' Dia., 3' Ht.	NO
Ic	31	Ixora coccinea 'Nora Grant'	Nora Grant Jungle Geranium	7 gal. 3' Ht.	NO
Ra	2	Rademachera Kunming	Dwarf Tree Jasmine	25 gal., 6' Ht., Bush Form	NO
Sr	52	Serenoa Repens	Saw Palmetto	7 gal. 18" Dia. x 18" Ht.	YES
Zp	30	Zamia pumila	Cootnie	7 gal. 18" Dia. x 18" Ht.	YES
TOTAL SHRUBS PROVIDED		223			
ON SITE SHRUBS PROVIDED		207			
# OF NATIVE SHRUBS (ON SITE)		134	% OF NATIVE SHRUBS PROVIDED ON SITE: 65.7% (134/207)		
GROUNDCOVERS & ACCENTS					
Chc	2	Chamaedorea cataractarum	Cat Palm	7 gal., 4' Ht.	NO
HI	85	Hymenocallis latifolia	Florida Spider Lily	3 gal., 18" O.C.	YES
Hr	18	Hibiscus rosa-sinensis 'America's	Hollywood Tropical	7 gal., 3' Ht.	NO
Lm	125	Liriope muscari 'Big Blue'	Big Blue Lily Turf	2 gal.	NO
Tx	21	Thaumatococcus 'Xanadu'	Philodendron Xanadu	2 gal.	NO

CITY OF MIAMI BEACH
LANDSCAPE LEGEND
 INFORMATION REQUIRED TO BE PERMANENTLY AFFIXED TO PLANS
 Zoning District: R33 Lot Area: 12,075 SF Acres: 0.27

	REQUIRED/ALLOWED	PROVIDED
OPEN SPACE		
A. Square feet of required Open Space as indicated on site plan: Lot Area = 12,075 s.f. x 50% = 6,037 s.f.	6,037	6,037
B. Square feet of parking lot open space required as indicated on site plan: Number of parking spaces: N/A x 10 s.f. parking space =	N/A	N/A
C. Total square feet of landscaped open space required: A+B=	6,037	6,037
LAWN AREA CALCULATION		
A. Square feet of landscaped open space required	6,037	6,037
B. Maximum lawn area (sod) permitted: 50% x 6,037 s.f.	3,018.5	2,281
TREES		
A. Number of trees required per lot or net lot acre, less existing number of trees meeting minimum requirements: N/A trees x N/A net lot acres - number of existing trees=	11	11
B. % Natives required: Number of trees provided x 30% =	4	6
C. % Low maintenance / drought and salt tolerant required: Number of trees provided x 50% =	6	11
D. Street Trees (maximum average spacing of 20' o.c.) 89 linear feet along street divided by 20' =	4	4
E. Street tree species allowed directly beneath power lines: (Maximum average spacing of 20' o.c.): N/A linear feet along street divided by 20' =	N/A	N/A
SHRUBS		
A. Number of shrubs required: Sum of lot and street trees required x 12=	180	207
B. % Native shrubs required: Number of shrubs provided x 50% =	104	134
LARGE SHRUBS OR SMALL TREES		
A. Number of large shrubs or small trees required: Number of required shrubs x 10% =	18	18
B. % Native large shrubs or small trees required: Number of large shrubs or small trees provided x 50% =	9	16

*R33 - R54 Residential Lots (TREE REQUIREMENTS):
 5 Trees + 1 Tree for every 1,000 square feet for lots over 6,000 square feet total.



Rev.	Date	Rev.	Date

ALL DRAWINGS AND WRITTEN MATERIAL APPEARING HEREIN CONSTITUTE THE ORIGINAL AND UNPUBLISHED WORK OF KOB KARP ARCHITECTURE, INC. AND MAY NOT BE DUPLICATED, USED, OR DISCLOSED WITHOUT THE EXPRESS WRITTEN CONSENT OF KOB KARP ARCHITECTURE, INC. AIA, 9/2022

NEW RESIDENCE
 1601 W 24TH STREET, SUNSET 3,
 MIAMI BEACH, FL, 33140

Owner:
 Name
 Address
 Address
 Address
 Tel:
 Email

Design Architect:



WAYNE SWADRON
architecture | interiors | gardens

160 Pears Avenue, Suite 210, Toronto, Ontario M5R 3P8
 +1 416 486 4800 f 416 486 6808 www.wayneswadron.com

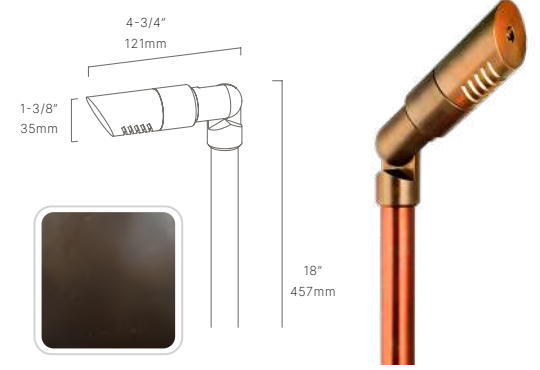
Landscape Architect:
 Nielsen Landscape Architects, LLC
 1447 Cypress Drive, Suite 2
 Jupiter, Florida 33469 USA
 Tel: +1(561) 402 9414



LANDSCAPE LIGHTING PLAN

PATHLIGHT - FX1

FINISH: DARK BRONZE
 SOURCE: AURORA LIGHT



BLPX
 Extra Dark Bronze
 Living Patina

TREE & PALM ACCENT LIGHT - FX2

FINISH: DARK BRONZE
 SOURCE: AURORA LIGHT



BLPX
 Extra Dark Bronze
 Living Patina

SMALL ACCENT LIGHT - FX3

FINISH: DARK BRONZE
 SOURCE: AURORA LIGHT



BLPX
 Extra Dark Bronze
 Living Patina

LANDSCAPE LIGHTING SCHEDULE

QTY	FIXTURE	TYPE	FINISH
29	FX-1 [P]	PATHWAY LIGHT	DARK BRONZE
8	FX-2 [A]	TREE ACCENT	DARK BRONZE
14	FX-3 [G]	SMALL ACCENT	DARK BRONZE

POOL AND FOUNTAIN LIGHT BY OTHERS

Date	MAR 2025	Sheet No.	L-800
Scale	1/16" = 1'-0" @ 11" x 17"		
Project	1601 W 24 STREET, MIAMI BEACH, FL		