

June 24<sup>th</sup>, 2024

Mr. Bryan Pravda, AIA/ NCARB/ WELL AP  
Pravda Architecture/Design, PLLC  
12906 154th Rd N  
Jupiter, FL 33478

## **Arboricultural Consulting Services at 8-10 Century Lane, Miami Beach, Florida**

To Whom It May Concern:

I visited the above-referenced property on June 22<sup>nd</sup>, 2024 to identify and evaluate all the trees found on the properties. I utilized surveys provided to me that were prepared by J. Bonfill & Associates, Inc. dated August 22<sup>nd</sup>, 2023 and September 29<sup>th</sup>, 2023. I have marked up these surveys to depict the location and number of trees and palms that were inspected during this field visit. I have attached a copy of these marked-up surveys for your review.

I reviewed a total of 24 trees and palms; and I have provided my findings within the attached Excel spreadsheet, which includes the common name, botanical name, measurements, current health condition rating, observations and disposition column to be completed by others. Photos of all trees were taken. One of the 24 trees is specimen size (trees that meet the height thresholds for being a regulated palm or tree; and they have a diameter at breast height of 12 inches or greater); and details of it can be found within this written report.

### **Evaluation Limitations**

The tree evaluations presented in this report have been made using accepted arboricultural techniques by visual examination of all aboveground parts of the trees. Unless noted otherwise, the trees were not cored, probed, or climbed; and there was no detailed inspection of the root crowns involving excavation. While reasonable efforts have been made to assess the trees in this report, there is no guarantee offered or implied that these trees or any of its parts may have problems or deficiencies that may arise in the future.

Trees are living organisms; their health and vigor change over time; and they are subject to changes in site and weather conditions. As such, trees should be re-evaluated periodically.

### **Certification of Performance**

I, Marisa Magrino, certify:

That I have personally inspected the trees referred to in this report and have stated my findings accurately. I further certify that I am an International Society of Arboriculture, Certified Arborist FL-6436A, involved in the practice of arboriculture and the study of trees.



Marisa Magrino, Principal  
ECS Group FL, LLC

## ALL TREES LOCATED WITHIN THE PROJECT AREA



Looking northwest at Non-Regulated Tree No. 1.



Looking southeast at Non-Regulated Tree No. 2 and Regulated Tree Nos. 3, 4, 5 and 6.



Looking southeast at Non-Regulated Tree Nos. 7, 8 and 9 and Regulated Tree Nos. 10 and 11.



Looking northwest at Non-Regulated Tree Nos. 12 and 13.



Looking southeast at Non-Regulated Tree No. 14.



Looking southwest at Non-Regulated Tree Nos. 15, 17 and 18 and Regulated Tree No. 16.




Looking southeast at Regulated Tree Nos. 19, 20 (specimen) and 21.

**Tree number 20**, Coconut palm, *Cocos nucifera*, is 48 feet tall with a canopy width of 22 feet and a DBH of 12 inches. The health condition percentage for the tree is 80%, good. The palm tree has minor line and pole conflicts.



Looking northeast at Non-Regulated Tree No. 22 and Regulated Tree Nos. 23 and 24.

Date: 6/22/24 Project Site Address: 8-10 Century Lane, Miami Beach, Florida										
TREE #	COMMON NAME	BOTANICAL NAME	CANOPY HEIGHT (ft)	CANOPY WIDTH (ft)	CLEAR TRUNK (ft) PALMS	DBH (in)	HEALTH CONDITION	HEALTH CONDITION % - 0-100	DISPOSITION To be Filled Out by Others	OBSERVATIONS
1	Solitaire palm	<i>Ptychosperma elegans</i>	15	12	10	3	Good	75%		<b>Not regulated (&lt;6" DBH for palms)</b> , minor nutrient deficiency, minor mechanical trunk damage, minor pests
2	Christmas palm	<i>Adonidia merrillii</i>	28	10	22	5	Good	75%		<b>Not regulated (&lt;6" DBH for palms)</b> , minor nutrient deficiency
3	Christmas palm	<i>Adonidia merrillii</i>	29	10	23	6	Good	75%		Minor nutrient deficiency
4	Christmas palm	<i>Adonidia merrillii</i>	27	11	21	6	Good	75%		Minor nutrient deficiency
5	Christmas palm	<i>Adonidia merrillii</i>	28	10	22	6	Good	75%		Minor nutrient deficiency
6	Christmas palm	<i>Adonidia merrillii</i>	27	10	21	6	Good	75%		Minor nutrient deficiency
7	Areca palm	<i>Dypsis lutescens</i>	23	16	15	24 multi	Fair	60%		<b>Not regulated (clustering palm)</b> , moderate nutrient deficiency
8	Areca palm	<i>Dypsis lutescens</i>	17	16	11	12 multi	Fair	60%		<b>Not regulated (clustering palm)</b> , moderate nutrient deficiency
9	Areca palm	<i>Dypsis lutescens</i>	16	18	10	16 multi	Fair	50%		<b>Not regulated (clustering palm)</b> , moderate nutrient deficiency
10	Christmas palm	<i>Adonidia merrillii</i>	23	13	16	6	Good	80%		
11	Frosted aralia	<i>Polyscias guilfoylei</i>	19	12		5	Fair	50%		Moderate reduction cuts, lower codominance at 5 feet, moderate mechanical trunk damage with decay at base, moderate lean with lopsided canopy
12	Areca palm	<i>Dypsis lutescens</i>	25	22	19	33 multi	Good	65%		<b>Not regulated (clustering palm)</b> , minor/moderate nutrient deficiency, line conflicts, building and fence conflicts
13	Christmas palm	<i>Adonidia merrillii</i>	17	12	10	4	Fair	60%		<b>Not regulated (&lt;6" DBH for palms)</b> , moderate restricted/suppressed canopy with line conflicts, minor/moderate nutrient deficiency
14	Dragon plant	<i>Dracaena marginata</i>	22	10		7	Fair	50%		<b>Not regulated (plant not tree)</b> , restricted canopy, codominance at 5 feet, fence and line conflicts, heavy vines
15	Dragon plant	<i>Dracaena marginata</i>	15	5		6	Poor	30%		<b>Not regulated (plant not tree)</b> , topped, major decay, mechanical damage, fence and pathway conflicts
16	Frosted aralia	<i>Polyscias guilfoylei</i>	15	5		4	Poor	40%		Partially topped, major canopy dieback, mechanical damage, fence and pathway conflicts
17	Dragon plant	<i>Dracaena marginata</i>	15	5		4	Fair	50%		<b>Not regulated (plant not tree)</b> , partially topped, moderate decay, vines, mechanical damage, fence and pathway conflicts

18	Dragon plant	<i>Dracaena marginata</i>	15	5		7 multi	Fair	50%		<b>Not regulated (plant not tree)</b> , partially topped, moderate decay, vines, mechanical damage, line conflicts, fence and pathway conflicts
19	Christmas palm	<i>Adonidia merrillii</i>	23	15	16	4, 5	Good	75%		Minor nutrient deficiency, minor mechanical trunk damage
20	Coconut palm	<i>Cocos nucifera</i>	48	22	32	12	Good	80%		Minor line and pole conflicts
21	Coconut palm	<i>Cocos nucifera</i>	41	21	31	9	Good	65%		Minor/moderate mechanical trunk damage, vehicle clearance conflicts
22	Dragon plant	<i>Dracaena marginata</i>	21	20		36 multi	Fair	55%		<b>Not regulated (plant not tree)</b> , moderate decay, partially topped, building conflicts
23	Yew podocarpus	<i>Podocarpus macrophyllus</i>	15	8		6 multi	Good	70%		Restricted canopy, line and fence conflicts, debris/rocks on roots/trunk flares
24	Yew podocarpus	<i>Podocarpus macrophyllus</i>	16	8		6 multi	Good	70%		Restricted canopy, line and fence conflicts, debris/rocks on roots/trunk flares
*I certify that all statements of fact are true, complete and correct to the best of my knowledge and belief and that they are made in good faith.										
										
<b>Marisa Magrino</b> ISA Certified Arborist FL-6436A ISA Tree Risk Assessment Qualified LIAF Certified Landscape Inspector #2016-0196										

# BOUNDARY SURVEY

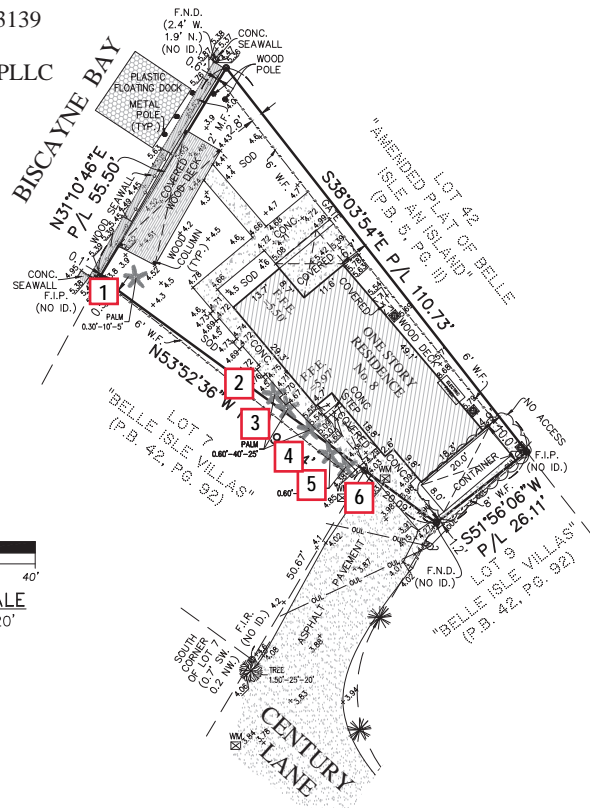
of

8 CENTURY LANE, MIAMI BEACH  
MIAMI-DADE COUNTY, FLORIDA 33139

for

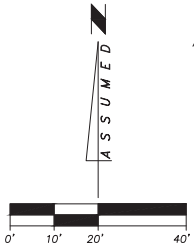
PRAVDA ARCHITECTURAL DESIGN, PLLC

Tree Overlay



## LEGEND

- Air Conditioner
- Back Flow Preventer
- Cable Television
- Catch Basin
- Chain Link Fence
- Clean Out
- CLP Concrete Light Pole
- CP Concrete Power Pole
- Control Valve
- C.B.S. Wall
- Diameter
- Diameter-Height-Spread
- Drain
- Drainage Manhole
- Electric Box
- Electric Meter
- Electric Motor
- Electric Panel
- Fire Hydrant
- Flag
- Floor Lamp
- Force Main Valve
- Gas Valve
- Grease Manhole
- Guard Pole
- Guy Wire
- Irrigation Control Valve



**GRAPHIC SCALE**  
SCALE : 1" = 20'

## ABBREVIATIONS

- A Arc Length
- A/C Air Conditioner Pad
- ASPH. Asphalt
- B.M. Benchmark
- (C) Calculated
- C.B.S. Concrete Block Structure
- C.G. Curb & Gutter
- C/L Centerline
- C.L.F. Chain Link Fence
- CONC. Concrete
- C.S. Concrete Slab

# BOUNDARY SURVEY

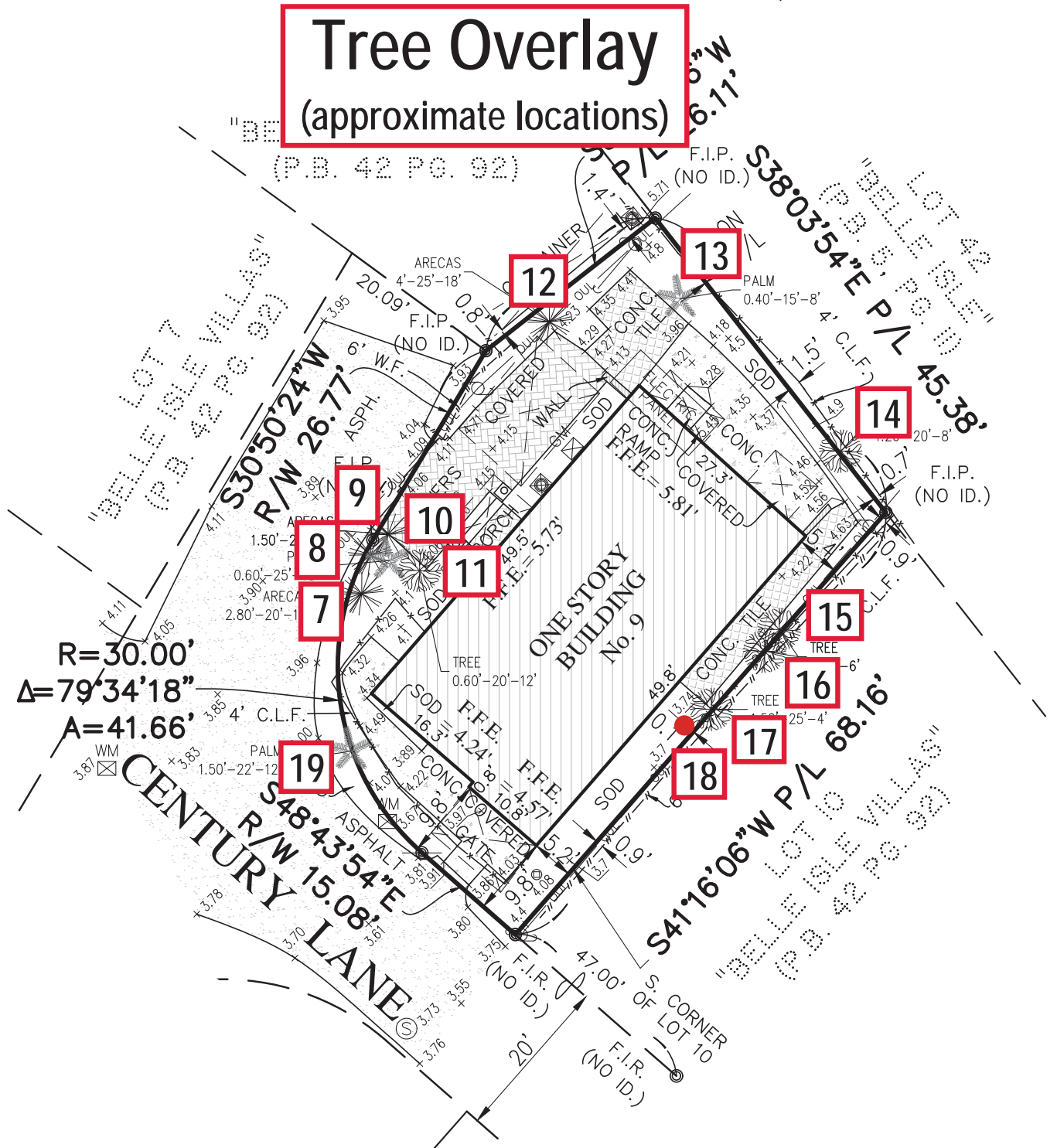
of

9 CENTURY LANE, MIAMI BEACH  
MIAMI-DADE COUNTY, FLORIDA 33139

for

PRAVDA ARCHITECTURAL DESIGN, PLLC

**Tree Overlay**  
(approximate locations)



$R=30.00'$   
 $\Delta=79^{\circ}34'18''$   
 $A=41.66'$

CENTURY LANE  
S48°43'54"E P/L 15.08'  
R/W 15.08'

ONE STORY BUILDING  
No. 9

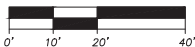
NOTE:

CTIONS  
gth  
ditioner Pad  
ark

# BOUNDARY SURVEY

of  
10 CENTURY LANE, MIAMI BEACH  
MIAMI-DADE COUNTY, FLORIDA 33139  
for  
PRAVDA ARCHITECTURAL DESIGN, PLLC

**Tree Overlay**  
(approximate locations)



GRAPHIC SCALE

SCALE : 1" = 20'

## LEGEND

Air Conditioner  
Back Flow Preventer  
Cable Television  
Catch Basin  
Chain Link Fence  
Clean Out  
Concrete Light Pole  
Concrete Power Pole  
Control Valve  
C.B.S. Wall  
Diameter  
Diameter-Height-Spread  
Drain  
Drainage Manhole  
Electric Box  
Electric Meter  
Electric Motor  
Electric Panel  
Fire Hydrant  
Flag  
Floor Lamp  
Force Main Valve  
Gas Valve  
Grease Manhole

## ABBREVIATIONS

A Arc Length  
A/C Air Conditioner Pad  
ASPH. Asphalt  
B.M. Benchmark  
(C) Calculated  
C.B.S. Concrete Block Structure  
C.G. Curb & Gutter  
C/L Centerline

