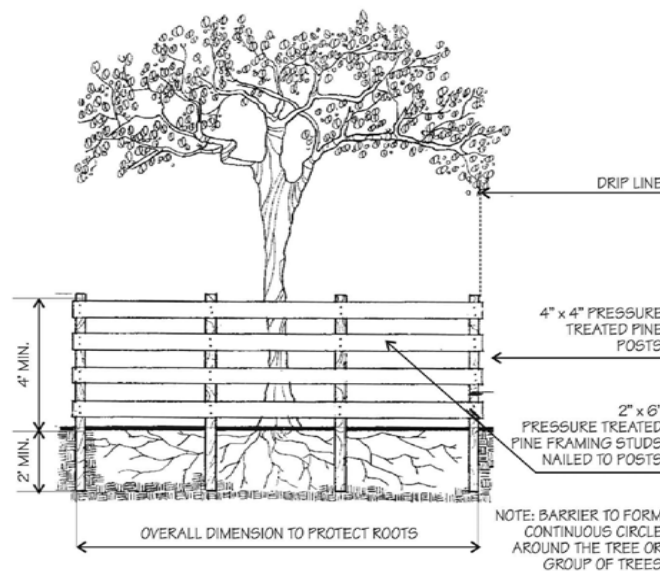
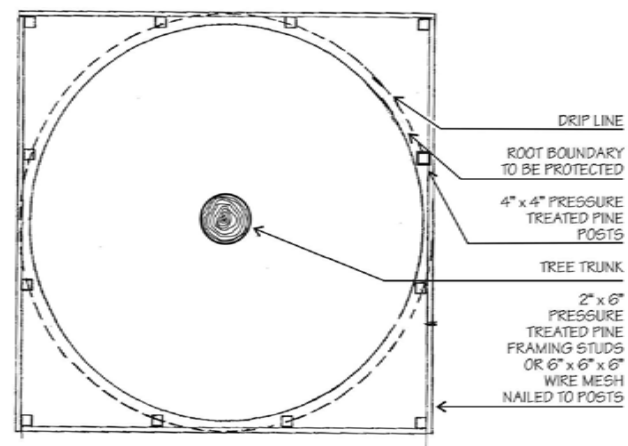
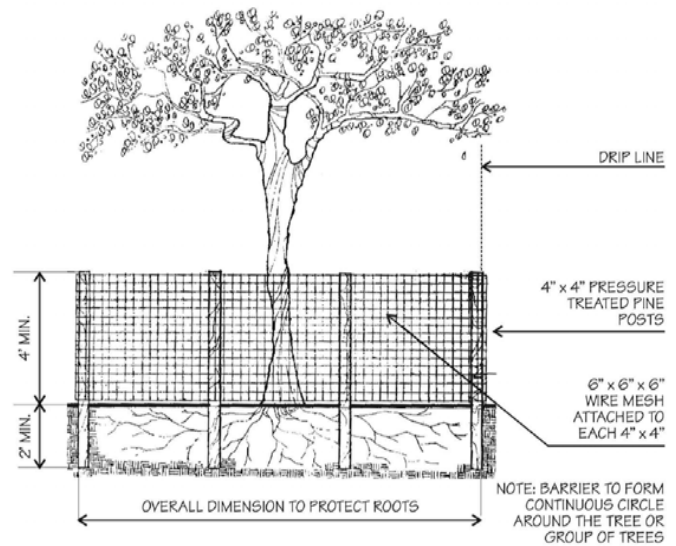


EXISTING-TREE PROTECTION BARRIER DETAILS

IT IS CRITICAL TO EXISTING TREE SURVIVAL TO PROVIDE PROTECTION DURING CONSTRUCTION. THIS DETAIL CAN BE USED AROUND ONE OR MORE TREES AND WILL PROVIDE PROTECTION FROM CONSTRUCTION EQUIPMENT.



EXISTING - TREE DISPOSITION TABLE

#	COMMON NAME	BOTANICAL NAME	DBH	SP	HT	DISPOSITION
1	Brazilian Beauty Leaf	<i>Calophyllum brasiliense</i>	3'	45'	50'	To Remain In-Place
2	Brazilian Beauty Leaf	<i>Calophyllum brasiliense</i>	0.90'	6'	30'	To Remain In-Place
3	Spindle Palm	<i>Hyophorbe verschaffeltii</i>	0.80'	6'	30'	To Be Removed
4	Traveler's Tree (8)	<i>Ravenala madagascariensis</i>	6'	11'	45'	To Be Relocated
5	Montgomery palm	<i>Veitchia montgomeryana</i>	.6'	8'	50"	To Remain In-Place
6	Montgomery palm	<i>Veitchia montgomeryana</i>	.6'	8'	50"	To Remain In-Place
7	Montgomery palm	<i>Veitchia montgomeryana</i>	.6'	10'	50"	To Remain In-Place
8	Montgomery palm (Double)	<i>Veitchia montgomeryana</i>	1.8'	10'	35'	To Remain In-Place
9	Montgomery palm (Double)	<i>Veitchia montgomeryana</i>	1.8'	10'	35'	To Remain In-Place
10	Montgomery palm (Triple)	<i>Veitchia montgomeryana</i>	2.3'	22'	35'	To Remain In-Place
11	Sylvester Palm (Offsite)	<i>Phoenix sylvestris</i>	1.1'	20'	30'	To Remain In-Place
12	Christmas Palm (Triple)	<i>Adonidia merrillii</i>	1.7'	15'	30'	To Be Removed
13	Christmas Palm	<i>Adonidia merrillii</i>	.5'	6'	30'	To Be Removed
14	Christmas Palm (Double)	<i>Adonidia merrillii</i>	1.8'	10'	35'	To Be Removed
15	Christmas Palm (Double)	<i>Adonidia merrillii</i>	1.8'	10'	35'	To Be Removed
16	Christmas Palm (Double)	<i>Adonidia merrillii</i>	1.8'	10'	35'	To Be Removed
17	Christmas Palm (Double)	<i>Adonidia merrillii</i>	1.8'	10'	35'	To Be Removed
18	Christmas Palm (Double)	<i>Adonidia merrillii</i>	1.8'	10'	35'	To Be Removed
19	Christmas Palm (Double)	<i>Adonidia merrillii</i>	1.8'	10'	35'	To Be Removed
20	Christmas Palm (Double)	<i>Adonidia merrillii</i>	1.8'	10'	35'	To Be Removed
21	Christmas Palm (Triple)	<i>Adonidia merrillii</i>	1.7'	15'	30'	To Be Removed
22	Christmas Palm (Triple)	<i>Adonidia merrillii</i>	1.7'	15'	30'	To Be Removed
23	Christmas Palm (Triple)	<i>Adonidia merrillii</i>	1.7'	15'	30'	To Be Removed
24	Christmas Palm (Double)	<i>Adonidia merrillii</i>	1.8'	10'	35'	To Be Removed
25	Christmas Palm (Double)	<i>Adonidia merrillii</i>	1.8'	10'	35'	To Be Removed
26	Christmas Palm (Double)	<i>Adonidia merrillii</i>	1.8'	10'	35'	To Be Removed
27	Christmas Palm (Triple)	<i>Adonidia merrillii</i>	1.7'	15'	30'	To Be Removed
28	Traveler's Tree (5)	<i>Ravenala madagascariensis</i>	4'	15'	30'	To Be Relocated
29	Apple Blossom Cassia	<i>Cassia javanica</i>	0.8'	20'	35'	To Be Removed
30	Traveler's Tree (13)	<i>Ravenala madagascariensis</i>	4.5'	15'	30'	To Be Relocated
31	Traveler's Tree (8)	<i>Ravenala madagascariensis</i>	3'	20'	30'	To Remain In-Place
32	Pencil Stick Cactus	<i>Euphorbia tirucalli</i>	0.8'	18'	27'	To Remain In-Place
33	Montgomery palm (Triple)	<i>Veitchia montgomeryana</i>	1.8'	12'	30'	To Be Relocated
34	Montgomery palm	<i>Veitchia montgomeryana</i>	0.6'	12'	30'	To Be Relocated
35	Montgomery palm	<i>Veitchia montgomeryana</i>	0.6'	12'	30'	To Be Relocated
36	Montgomery palm	<i>Veitchia montgomeryana</i>	0.6'	12'	30'	To Be Relocated
37	Traveler's Tree (13)	<i>Ravenala madagascariensis</i>	6'	22'	28'	To Remain In-Place
38	Spindle Palm	<i>Hyophorbe verschaffeltii</i>	2.3'	4'	7'	To Be Removed
39	Christmas Palm (Triple)	<i>Adonidia merrillii</i>	0.8'	18'	23'	To Be Removed
40	Washingtonia	<i>Washingtonia filifera</i>	1.2'	10'	30'	To Be Removed
41	Starburst Clerdendron	<i>Clerodendrum quadriloculare</i>	0.33'	8'	15'	To Be Removed
42	Starburst Clerdendron	<i>Clerodendrum quadriloculare</i>	0.33'	8'	15'	To Be Removed
43	Fishtail Palm	<i>Caryota mitis</i>	3'	20'	30'	To Remain In-Place
44	Kapok Tree	<i>Ceiba pentandra</i>	6'	40'	45'	To Remain In-Place
45	Coconut Palm	<i>Cocos nuciferas</i>	.6'	10'	35'	To Be Removed
46	Bucaneer Palm	<i>Pseudophoenix sargentii</i>	0.6'	8'	15'	To Be Relocated
47	Thatch Palm	<i>Thrinax radiata</i>	0.4'	6'	7'	To Be Relocated
48	Madagascar Plumeria	<i>Pachypodium lamerei</i>	1.5'	12'	18'	To Be Relocated

STRATA
PETAR STRACENSKI
PO BOX 414345
MIAMI BEACH, FL 33141
T: 305-607-8168

MAURICIO DEL VALLE
3 ISLAND AVE. NO. 9G
MIAMI BEACH, FL 33139
T: 305-607-8168



PETAR STRACENSKI
LA 6667526

Rene Gonzalez Architects

Miami, Florida
rengonzalezarchitects.com
T 305 762 5985
AA #0003951

336 Meridian Ave

336 Meridian Ave
Miami Beach, FL 33139

Date: 08/22/2025
Scale: 3/32" = 1'-0"
Revisions:

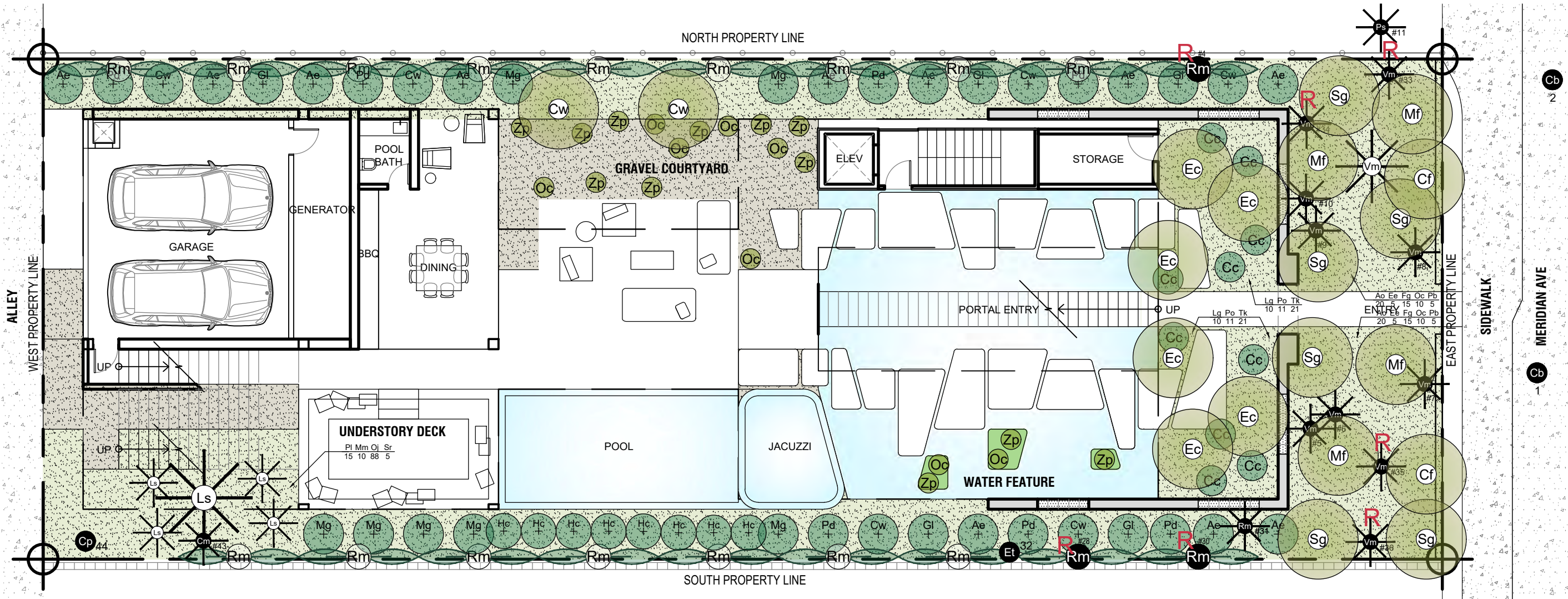
EXISTING-TREE
DISPOSITION
TABLE

L-101

PLAN KEY

	HARDSCAPE		PLANTING		EXISTING TREE IN SITU Showing tree number per survey		EXISTING PALM IN SITU Showing tree number per survey		PROPOSED TREE Refer to plant list		RELOCATED TRAVELLER'S TREE Showing tree number per survey		PROPOSED LARGE SHRUB / SMALL TREE Refer to plant list
	WATER FEATURE		GRAVEL		RELOCATED TREE Showing tree number per survey		RELOCATED PALM Showing tree number per survey		PROPOSED PALM Refer to plant list		PROPOSED TRAVELLER'S TREE Refer to plant list		PROPOSED SMALL SHRUBS Refer to plant list

Petar Stracenski
 2025.08.21
 14:33:28-04'00"
 PETAR STRACENSKI
 LA 6667526



Rene Gonzalez Architects
 Miami, Florida
 renegonzalezarchitects.com
 T 305 762 5995
 AA #0003951

336 Meridian Ave
 336 Meridian Ave
 Miami Beach, FL 33139

Date: 08/22/2025
 Scale: 3/32" = 1'-0"
 Revisions:

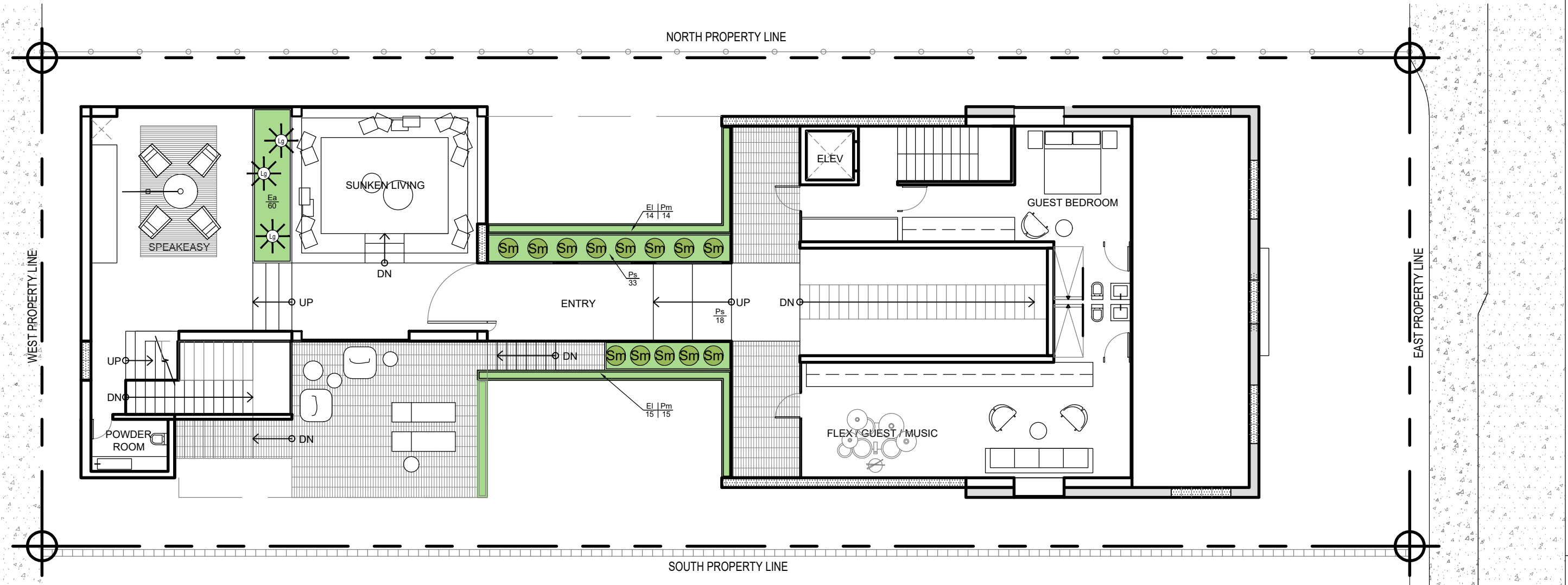
GROUND FLOOR PLANTING PLAN
 SCALE: 3/32" = 1'-0"

GROUND FLOOR PLANTING PLAN

NOTE: ALL LANDSCAPE AREAS TO BE PROVIDED WITH AN AUTOMATICALLY OPERATED, UNDERGROUND, IRRIGATION SYSTEM TO HAVE 100% COVERAGE AS REQUIRED BY CODE.

PLAN KEY

	HARDSCAPE		PLANTER		EXISTING TREE IN SITU Showing tree number per survey		EXISTING PALM IN SITU Showing tree number per survey		PROPOSED TREE Refer to plant list		RELOCATED TRAVELLER'S TREE Showing tree number per survey		PROPOSED LARGE SHRUB / SMALL TREE Refer to plant list
	WATER FEATURE		GRAVEL		RELOCATED TREE Showing tree number per survey		RELOCATED PALM Showing tree number per survey		PROPOSED PALM Refer to plant list		PROPOSED TRAVELLER'S TREE Refer to plant list		PROPOSED SMALL SHRUBS Refer to plant list



FIRST FLOOR PLANTING PLAN
 SCALE: 3/32" = 1'-0"

PROPOSED PLANT LIST

Symb.	Quant.	Botanical Name	Common Name	Description
PALMS				
Lg	3	<i>Licuala grandis</i>	Ruffle Fan Palm	(1) 3' Ht, (1) 5' Ht, (1) 9'Ht , Full
SHRUBS				
Sm	13	<i>Sansevieria masoniana</i>	Whale Fin Snake Plant	7G, 30" x 30", Full
GROUND-COVERS				
Ea	69	<i>Epipremnum aureum 'Neon'</i>	Neon Lime Pothos	18" x 18", Full, 12' O.C.
El	29	<i>Ernodea littoralis</i>	Golden Beach Creeper	24" x 24", Full, 12' O.C.
Pm	29	<i>Phyllanthus myrtilloious</i>	Mousetail 'Cascade'	18" x 18", Full, 12' O.C.
Ps	51	<i>Pilea serpyllacea</i>	Artillery Fern	12" x 12", Full, 2' O.C.

NOTE: ALL LANDSCAPE AREAS TO BE PROVIDED WITH AN AUTOMATICALLY OPERATED, UNDERGROUND, IRRIGATION SYSTEM TO HAVE 100% COVERAGE AS REQUIRED BY CODE.

Rene Gonzalez Architects
 Miami, Florida
 renegonzalezarchitects.com
 T 305.762.5995
 AA #0003951

336 Meridian Ave
 Miami Beach, FL 33139

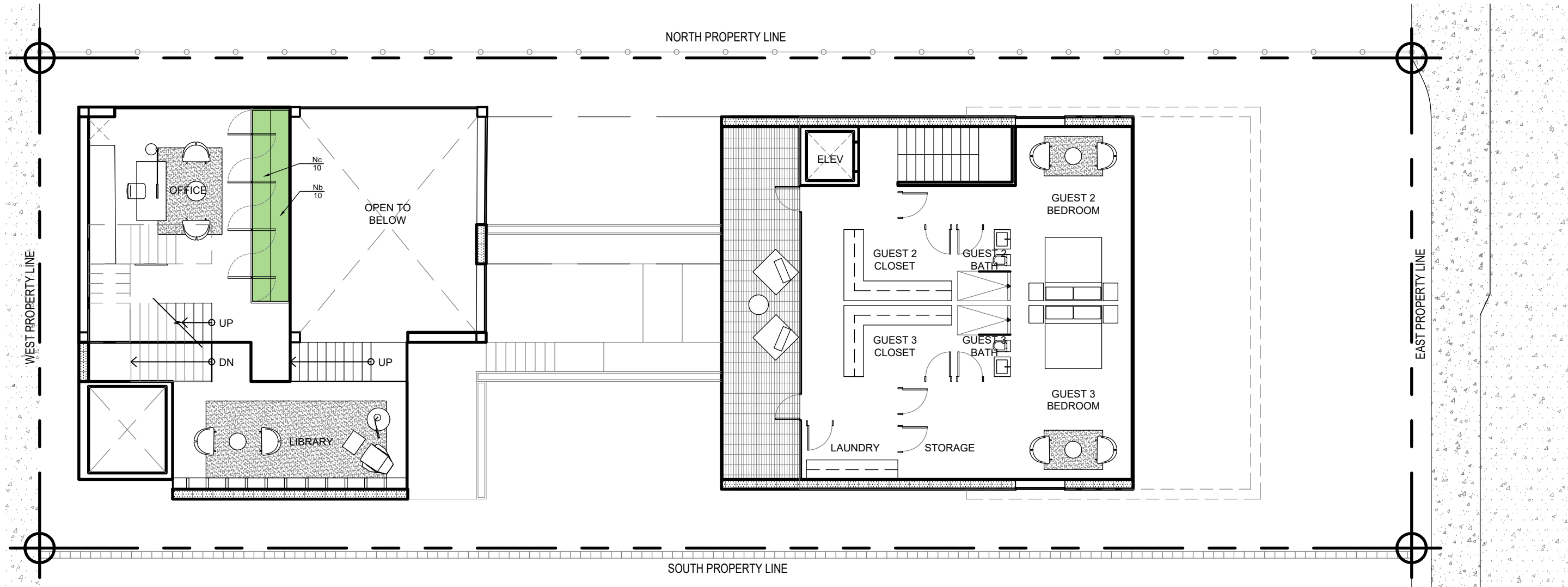
Date: 08/22/2025
 Scale: 3/32" = 1'-0"
 Revisions:

FIRST FLOOR
 PLANTING PLAN

L-202

PLAN KEY

	HARDSCAPE		PLANTING		EXISTING TREE IN SITU Showing tree number per survey		EXISTING PALM IN SITU Showing tree number per survey		PROPOSED TREE Refer to plant list		RELOCATED TRAVELLER'S TREE Showing tree number per survey		PROPOSED LARGE SHRUB / SMALL TREE Refer to plant list
	WATER FEATURE		GRAVEL		RELOCATED TREE Showing tree number per survey		RELOCATED PALM Showing tree number per survey		PROPOSED PALM Refer to plant list		PROPOSED TRAVELLER'S TREE Refer to plant list		PROPOSED SMALL SHRUBS Refer to plant list



SECOND FLOOR PLANTING PLAN
 SCALE: 3/32" = 1'-0"

PROPOSED PLANT LIST

Symb.	Quant.	Botanical Name	Common Name	Description
GROUND-COVERS				
Nc	17	<i>Nephrolepis codifolia 'duffii'</i>	Lemon Butter Fern	18" x 18", Full, 18" O.C.
Ne	17	<i>Nephrolepis exaltata</i>	Boston Fern	18" x 18", Full, Hb, 18' O.C.

Rene Gonzalez Architects
 Miami, Florida
 renegonzalezarchitects.com
 T 305.762.5995
 AA #0003351

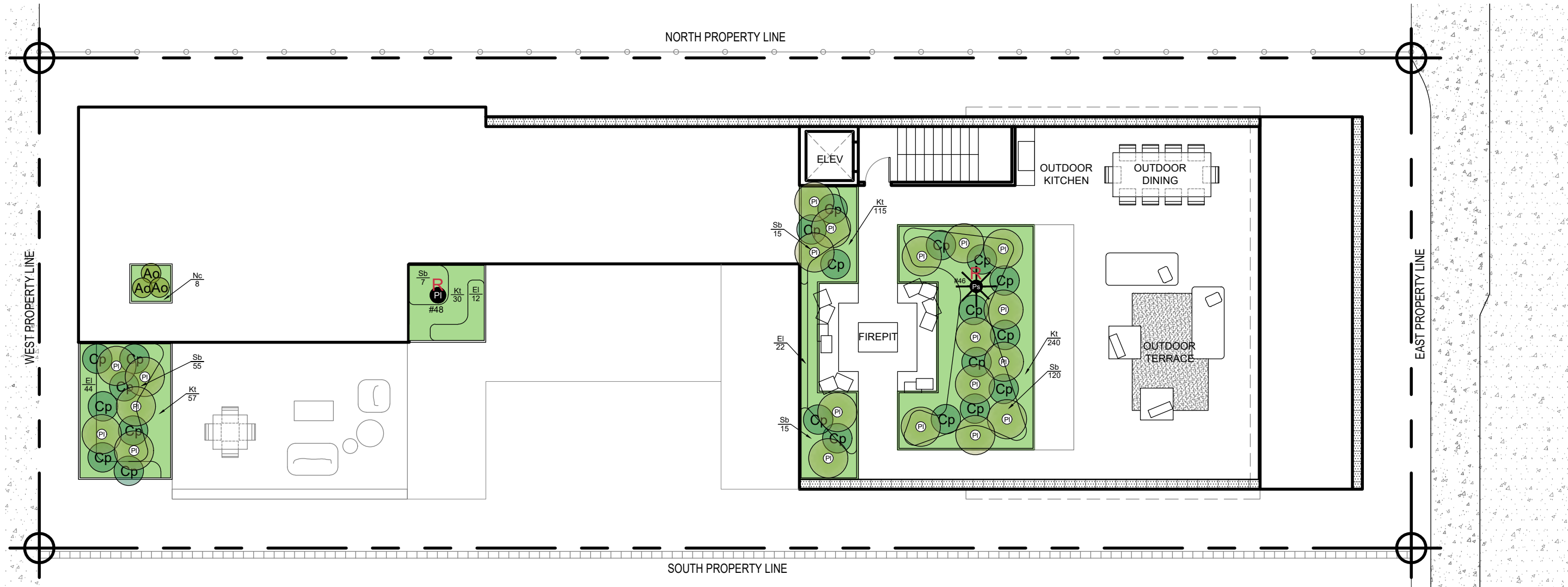
336 Meridian Ave
 Miami Beach, FL 33139

Date: 08/22/2025
 Scale: 3/32" = 1'-0"
 Revisions:

NOTE: ALL LANDSCAPE AREAS TO BE PROVIDED WITH AN AUTOMATICALLY OPERATED, UNDERGROUND, IRRIGATION SYSTEM TO HAVE 100% COVERAGE AS REQUIRED BY CODE.

PLAN KEY

	HARDSCAPE		PLANTING		EXISTING TREE IN SITU Showing tree number per survey		EXISTING PALM IN SITU Showing tree number per survey		PROPOSED TREE Refer to plant list		RELOCATED TRAVELLER'S TREE Showing tree number per survey		PROPOSED LARGE SHRUB / SMALL TREE Refer to plant list
	WATER FEATURE		GRAVEL		RELOCATED TREE Showing tree number per survey		RELOCATED PALM Showing tree number per survey		PROPOSED PALM Refer to plant list		PROPOSED TRAVELLER'S TREE Refer to plant list		PROPOSED SMALL SHRUBS Refer to plant list



THIRD FLOOR AND ROOF PLANTING PLAN
 SCALE: 3/32" = 1'-0"

PROPOSED PLANT LIST

Symb.	Quant.	Botanical Name	Common Name	Description	Symb.	Quant.	Botanical Name	Common Name	Description
TREES									
PI	21	<i>Pachypodium lamerei</i>	Madagascar Plumeria	(1) Relocated, (13) 6' Ht, Full, (7) 6' Ht, Multi, Full	GRASSES				
					Sb	212	<i>Spartina bakeri</i>	Sandcord Grass	18" x 18", Full
PALMS									
Ps	1	<i>Pseudophoenix sargentii</i>	Bucaneer Palm	Relocated From Ground Level	GROUND-COVERS				
					EI	78	<i>Ernodea littoralis</i>	Golden Beach Creeper	24" x 24", Full
					Kt	442	<i>Kalanchoe tomentosa</i>	Panda Plant	12" x 12", Full
SHRUBS									
Ao	3	<i>Alocasia odorax x reginula</i>	Alocasia 'Regal Shields'	7G, 36" x 36", Full	Nc	8	<i>Nephrolepis codifolia 'duffii'</i>	Lemon Butter Fern	18" x 18", Full
Cp	21	<i>Cereus peruvianus 'Monstrosus'</i>	Cereus montrosus	36" x 36", Full					

Rene Gonzalez Architects
 Miami, Florida
 renegonzalezarchitects.com
 T 305 762 5995
 AA #0003951

336 Meridian Ave
 Miami Beach, FL 33139

Date: 08/22/2025
 Scale: 3/32" = 1'-0"
 Revisions:

THIRD FLOOR AND ROOF PLANTING PLAN

NOTE: ALL LANDSCAPE AREAS TO BE PROVIDED WITH AN AUTOMATICALLY OPERATED, UNDERGROUND, IRRIGATION SYSTEM TO HAVE 100% COVERAGE AS REQUIRED BY CODE.