



revuelta
architecture
industrial

Miami
San Diego, CA
revuelta@revuelta.com
2650 SW 27th Ave
Miami, FL 33135
T: 305.560.5000
F: 305.560.5040

CITTERIO-VIEL & PARTNERS

ANTONIO CITTERIO PATRICIA VIEL
2022 SW 10th St Miami, FL
MIAMI, FL 33135
www.citterioviel.com

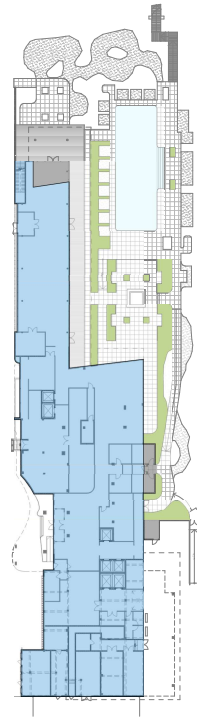
FINAL SUBMITTAL: 03/09/2025
APPLICATION#BING. 25-0649

BVLGARI HOTEL
MIAMI BEACH

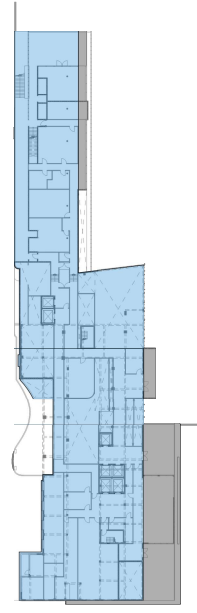
100 24th STREET
MIAMI BEACH, FLORIDA, 33139

HISTORIC PRESERVATION BOARD
MAY 13, 2025

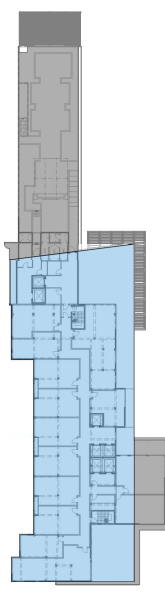
PREVIOUSLY APPROVED
 PER HPB 20-04-042
 HPB 24-0633



GROUND LEVEL
 SCALE: 1/8" = 1'-0"
 GROSS TO REMAIN = 20,877 SF
 GROSS NEW = 790 SF



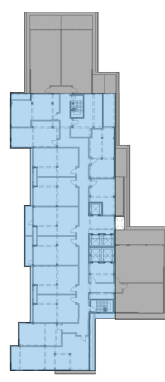
LEVEL 2
 SCALE: 1/8" = 1'-0"
 GROSS TO REMAIN = 23,346 SF
 GROSS NEW = 3,959 SF



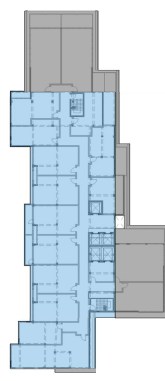
LEVEL 3
 SCALE: 1/8" = 1'-0"
 GROSS TO REMAIN = 16,346 SF
 GROSS NEW = 7,439 SF



LEVEL 4
 SCALE: 1/8" = 1'-0"
 GROSS TO REMAIN = 11,115 SF
 GROSS NEW = 6,053 SF



LEVEL 5
 SCALE: 1/8" = 1'-0"
 GROSS TO REMAIN = 11,115 SF
 GROSS NEW = 5,774 SF

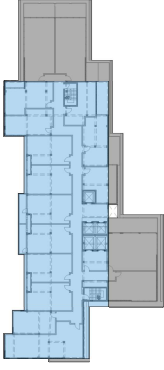


LEVEL 6
 SCALE: 1/8" = 1'-0"
 GROSS TO REMAIN = 11,115 SF
 GROSS NEW = 5,774 SF

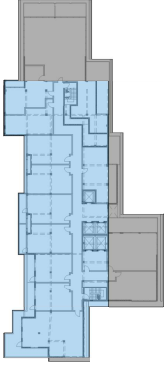
EXISTING GROSS AREA TO REMAIN
 PROPOSED NEW GROSS AREA

GROSS DIAGRAMS
 PREVIOUSLY APPROVED
 PER HPB 20-04-042
 HPB 24-0633

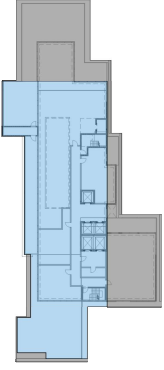
PREVIOUSLY APPROVED
PER HPB 20-04-042
HPB 24-06-032



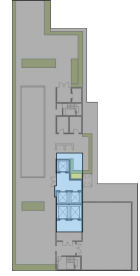
LEVEL 7
SCALE: 1/8" = 1'-0"
GROSS TO REMAIN = 11,115 SF
GROSS NEW = 5,774 SF



LEVEL 8
SCALE: 1/8" = 1'-0"
GROSS TO REMAIN = 11,115 SF
GROSS NEW = 5,829 SF



LEVEL 9
SCALE: 1/8" = 1'-0"
GROSS TO REMAIN = 10,270 SF
GROSS NEW = 6,101 SF



ROOF LEVEL
SCALE: 1/8" = 1'-0"
GROSS TO REMAIN = 928 SF
GROSS NEW = 9,986 SF

EXISTING GROSS AREA TO REMAIN
PROPOSED NEW GROSS AREA

GROSS AREA - EXISTING TO REMAIN	
LEVEL	AREA
GROUND LEVEL	20,877
LEVEL 2	23,346
LEVEL 3	16,349
LEVEL 4	11,115
LEVEL 5	11,115
LEVEL 6	11,115
LEVEL 7	11,115
LEVEL 8	11,115
LEVEL 9 (EXIST. ROOF)	10,270
ROOF LEVEL	928
	127,345 sq ft

GROSS AREA - NEW	
LEVEL	AREA
GROUND LEVEL	740
LEVEL 2	3,959
LEVEL 3	7,439
LEVEL 4	5,690
LEVEL 5	5,774
LEVEL 6	5,774
LEVEL 7	5,774
LEVEL 8	5,829
LEVEL 9 (EXIST. ROOF)	6,101
ROOF LEVEL	9,986
	57,416 sq ft

GROSS DIAGRAMS
PREVIOUSLY APPROVED
PER HPB 20-04-042
HPB 24-06-032

revuelta
ARCHITECTS
1000 BAYVIEW BLVD
SUITE 1000
MIAMI BEACH, FL 33139
TEL: 305.371.1100
WWW.REVUELTA.COM

Client:
BVLGARI HOTEL
10025 BAYVIEW BLVD
SUITE 1000
MIAMI BEACH, FL 33139
TEL: 305.371.1100
WWW.REVUELTA.COM

Project:
CUTLER HOTEL
& PARTNERS
10025 BAYVIEW BLVD
SUITE 1000
MIAMI BEACH, FL 33139

BVLGARI HOTEL
10025 BAYVIEW BLVD
SUITE 1000
MIAMI BEACH, FL 33139

Revision:

Owner/Investor:
BVLGARI HOTEL
10025 BAYVIEW BLVD
SUITE 1000
MIAMI BEACH, FL 33139
TEL: 305.371.1100
WWW.REVUELTA.COM

Address:
10025 BAYVIEW BLVD
SUITE 1000
MIAMI BEACH, FL 33139
TEL: 305.371.1100
WWW.REVUELTA.COM

HPB SET
HPB 24-06-032

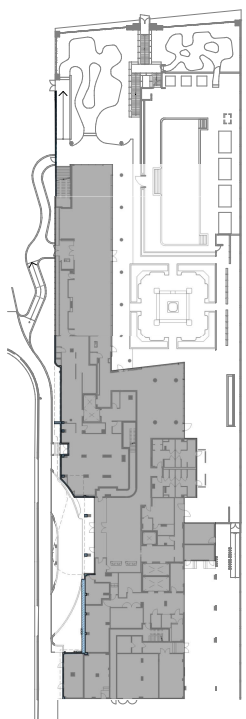
Date:
08/20/24
Scale:
AS SHOWN
Project No.:
200

GROSS DIAGRAMS
Sheet No. **A-003**

NOT FOR CONSTRUCTION

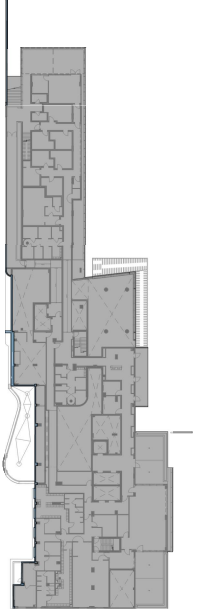
This drawing and the information contained herein are the property of Revuelta Architects, Inc. and are to be used only for the project and site specifically identified herein. No part of this drawing may be reproduced, stored in a retrieval system, or transmitted in any form or by any means, electronic, mechanical, photocopying, recording, or by any information storage and retrieval system, without the prior written permission of Revuelta Architects, Inc.

PROPOSED



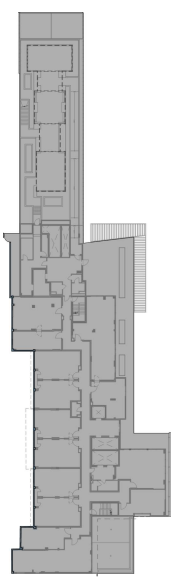
LEVEL 1 - LOBBY
SCALE 1/32" = 1'-0"

GROSS TO REMAIN = 320 S.F.
GROSS NEW = 22,301 S.F.



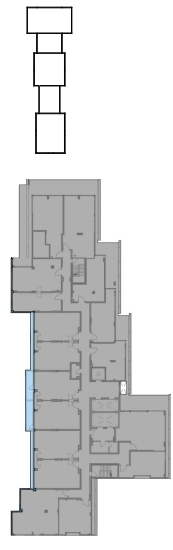
LEVEL 2
SCALE 1/32" = 1'-0"

GROSS TO REMAIN = 328 S.F.
GROSS NEW = 27,400 S.F.



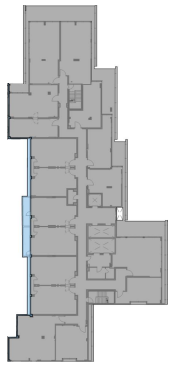
LEVEL 3
SCALE 1/32" = 1'-0"

GROSS TO REMAIN = 181 S.F.
GROSS NEW = 24,438 S.F.



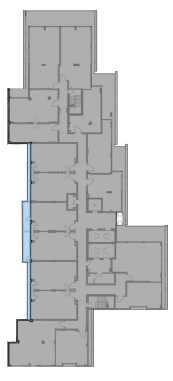
LEVEL 4
SCALE 1/32" = 1'-0"

GROSS TO REMAIN = 488 S.F.
GROSS NEW = 16,246 S.F.



LEVEL 5
SCALE 1/32" = 1'-0"

GROSS TO REMAIN = 482 S.F.
GROSS NEW = 16,007 S.F.



LEVEL 6
SCALE 1/32" = 1'-0"

GROSS TO REMAIN = 482 S.F.
GROSS NEW = 16,007 S.F.

EXISTING GROSS AREAS TO REMAIN
PROPOSED NEW GROSS AREA

GROSS DIAGRAMS - PROPOSED

revuelta
ARCHITECTS
1100 BAYVIEW BLVD
SUITE 100
MIAMI BEACH, FL 33139

Client
BVLGARI HOTEL
www.bulgari.com
1000 BAYVIEW BLVD
SUITE 100
MIAMI BEACH, FL 33139
TEL: 305.673.1100
FAX: 305.673.1101

Project Address
CUTLER HUBBEL
& PARTNERS
1000 BAYVIEW BLVD
SUITE 100
MIAMI BEACH, FL 33139

BVLGARI HOTEL
MIAMI BEACH
1000 BAYVIEW BLVD
MIAMI BEACH, FL 33139

Revision

Owner/Developer
BVLGARI LIMITED
1000 BAYVIEW BLVD
SUITE 100
MIAMI BEACH, FL 33139
TEL: 305.673.1100
FAX: 305.673.1101
Consultant

Address
1000 BAYVIEW BLVD
SUITE 100
MIAMI BEACH, FL 33139
Lot: 1000 BAYVIEW BLVD
SUBDIVISION
LUSH GOLF & RESORTS
LUSH GOLF & RESORTS
1000 BAYVIEW BLVD
SUITE 100
MIAMI BEACH, FL 33139

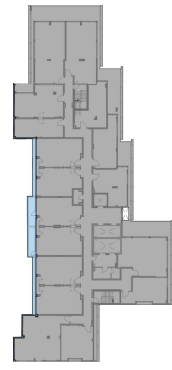
Date
03/20/2013
Scale
AS SHOWN
Project No.
1000 BAYVIEW
Sheet No.
A-004

GROSS TO REMAIN
GROSS NEW
GROSS TO REMAIN
GROSS NEW

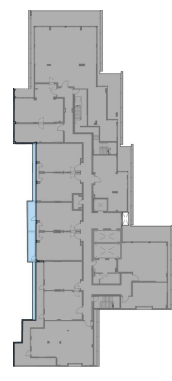
NOT FOR CONSTRUCTION

This drawing and the work shown hereon are the copyrighted work of Revuelta Architects, Inc. and are to be used only for the project and site specifically identified hereon. No part of this drawing may be reproduced, stored in a retrieval system, or transmitted in any form or by any means, electronic, mechanical, photocopying, recording, or by any information storage and retrieval system, without the prior written permission of Revuelta Architects, Inc.

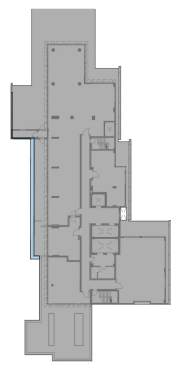
PROPOSED



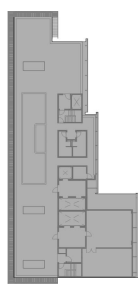
LEVEL 7
 SCALE 1/32" = 1'-0"
 GROSS TO REMAIN = 491 S.F.
 GROSS NEW = 16,007 S.F.



LEVEL 8
 SCALE 1/32" = 1'-0"
 GROSS TO REMAIN = 496
 GROSS NEW = 18,009



LEVEL 9
 SCALE 1/32" = 1'-0"
 GROSS TO REMAIN = 226 S.F.
 GROSS NEW = 15,043 S.F.



LEVEL 10 - ROOF
 SCALE 1/32" = 1'-0"
 GROSS NEW = 10,425 S.F.

LEVEL	AREA
LEVEL 1 - LOBBY	320
LEVEL 2	328
LEVEL 3	101
LEVEL 4	488
LEVEL 5	492
LEVEL 6	492
LEVEL 7	491
LEVEL 8	496
LEVEL 9	226
LEVEL 10 - ROOF	3,514 HP
	179,883 SF

LEVEL	AREA
LEVEL 1 - LOBBY	22,301
LEVEL 2	27,400
LEVEL 3	24,616
LEVEL 4	16,246
LEVEL 5	16,007
LEVEL 6	16,007
LEVEL 7	16,007
LEVEL 8	16,009
LEVEL 9	15,043
LEVEL 10 - ROOF	10,425
	179,883 SF

EXISTING GROSS AREAS TO REMAIN
 PROPOSED NEW GROSS AREA

GROSS DIAGRAMS - PROPOSED

revuelta
 ARCHITECTURAL FIRM
 1000 BAYVIEW BLVD
 SUITE 1000
 MIAMI, FL 33134
 TEL: 305.371.1100
 WWW.REVUELTA.COM

CUTLER LITTEL & PARTNERS
 ARCHITECTS
 1000 BAYVIEW BLVD
 SUITE 1000
 MIAMI, FL 33134
 TEL: 305.371.1100
 WWW.CUTLERLITTEL.COM

BYLGARI HOTEL
 MIAMI BEACH
 10025 BAYVIEW BLVD
 MIAMI BEACH, FL 33158

Revision

Contractor
BHJ Miami Limited
 1577 Avenue
 Miami Beach, FL 33139
 (781) 724-6504
 Consultant

Address
 10025 BAYVIEW BLVD
 MIAMI BEACH, FL 33158
 LOTS 10, 11, 12, 13, 14, 15, 16, 17, 18, 19, 20, 21, 22, 23, 24, 25, 26, 27, 28, 29, 30, 31, 32, 33, 34, 35, 36, 37, 38, 39, 40, 41, 42, 43, 44, 45, 46, 47, 48, 49, 50, 51, 52, 53, 54, 55, 56, 57, 58, 59, 60, 61, 62, 63, 64, 65, 66, 67, 68, 69, 70, 71, 72, 73, 74, 75, 76, 77, 78, 79, 80, 81, 82, 83, 84, 85, 86, 87, 88, 89, 90, 91, 92, 93, 94, 95, 96, 97, 98, 99, 100, 101, 102, 103, 104, 105, 106, 107, 108, 109, 110, 111, 112, 113, 114, 115, 116, 117, 118, 119, 120, 121, 122, 123, 124, 125, 126, 127, 128, 129, 130, 131, 132, 133, 134, 135, 136, 137, 138, 139, 140, 141, 142, 143, 144, 145, 146, 147, 148, 149, 150, 151, 152, 153, 154, 155, 156, 157, 158, 159, 160, 161, 162, 163, 164, 165, 166, 167, 168, 169, 170, 171, 172, 173, 174, 175, 176, 177, 178, 179, 180, 181, 182, 183, 184, 185, 186, 187, 188, 189, 190, 191, 192, 193, 194, 195, 196, 197, 198, 199, 200, 201, 202, 203, 204, 205, 206, 207, 208, 209, 210, 211, 212, 213, 214, 215, 216, 217, 218, 219, 220, 221, 222, 223, 224, 225, 226, 227, 228, 229, 230, 231, 232, 233, 234, 235, 236, 237, 238, 239, 240, 241, 242, 243, 244, 245, 246, 247, 248, 249, 250, 251, 252, 253, 254, 255, 256, 257, 258, 259, 260, 261, 262, 263, 264, 265, 266, 267, 268, 269, 270, 271, 272, 273, 274, 275, 276, 277, 278, 279, 280, 281, 282, 283, 284, 285, 286, 287, 288, 289, 290, 291, 292, 293, 294, 295, 296, 297, 298, 299, 300, 301, 302, 303, 304, 305, 306, 307, 308, 309, 310, 311, 312, 313, 314, 315, 316, 317, 318, 319, 320, 321, 322, 323, 324, 325, 326, 327, 328, 329, 330, 331, 332, 333, 334, 335, 336, 337, 338, 339, 340, 341, 342, 343, 344, 345, 346, 347, 348, 349, 350, 351, 352, 353, 354, 355, 356, 357, 358, 359, 360, 361, 362, 363, 364, 365, 366, 367, 368, 369, 370, 371, 372, 373, 374, 375, 376, 377, 378, 379, 380, 381, 382, 383, 384, 385, 386, 387, 388, 389, 390, 391, 392, 393, 394, 395, 396, 397, 398, 399, 400, 401, 402, 403, 404, 405, 406, 407, 408, 409, 410, 411, 412, 413, 414, 415, 416, 417, 418, 419, 420, 421, 422, 423, 424, 425, 426, 427, 428, 429, 430, 431, 432, 433, 434, 435, 436, 437, 438, 439, 440, 441, 442, 443, 444, 445, 446, 447, 448, 449, 450, 451, 452, 453, 454, 455, 456, 457, 458, 459, 460, 461, 462, 463, 464, 465, 466, 467, 468, 469, 470, 471, 472, 473, 474, 475, 476, 477, 478, 479, 480, 481, 482, 483, 484, 485, 486, 487, 488, 489, 490, 491, 492, 493, 494, 495, 496, 497, 498, 499, 500, 501, 502, 503, 504, 505, 506, 507, 508, 509, 510, 511, 512, 513, 514, 515, 516, 517, 518, 519, 520, 521, 522, 523, 524, 525, 526, 527, 528, 529, 530, 531, 532, 533, 534, 535, 536, 537, 538, 539, 540, 541, 542, 543, 544, 545, 546, 547, 548, 549, 550, 551, 552, 553, 554, 555, 556, 557, 558, 559, 560, 561, 562, 563, 564, 565, 566, 567, 568, 569, 570, 571, 572, 573, 574, 575, 576, 577, 578, 579, 580, 581, 582, 583, 584, 585, 586, 587, 588, 589, 590, 591, 592, 593, 594, 595, 596, 597, 598, 599, 600, 601, 602, 603, 604, 605, 606, 607, 608, 609, 610, 611, 612, 613, 614, 615, 616, 617, 618, 619, 620, 621, 622, 623, 624, 625, 626, 627, 628, 629, 630, 631, 632, 633, 634, 635, 636, 637, 638, 639, 640, 641, 642, 643, 644, 645, 646, 647, 648, 649, 650, 651, 652, 653, 654, 655, 656, 657, 658, 659, 660, 661, 662, 663, 664, 665, 666, 667, 668, 669, 670, 671, 672, 673, 674, 675, 676, 677, 678, 679, 680, 681, 682, 683, 684, 685, 686, 687, 688, 689, 690, 691, 692, 693, 694, 695, 696, 697, 698, 699, 700, 701, 702, 703, 704, 705, 706, 707, 708, 709, 710, 711, 712, 713, 714, 715, 716, 717, 718, 719, 720, 721, 722, 723, 724, 725, 726, 727, 728, 729, 730, 731, 732, 733, 734, 735, 736, 737, 738, 739, 740, 741, 742, 743, 744, 745, 746, 747, 748, 749, 750, 751, 752, 753, 754, 755, 756, 757, 758, 759, 760, 761, 762, 763, 764, 765, 766, 767, 768, 769, 770, 771, 772, 773, 774, 775, 776, 777, 778, 779, 780, 781, 782, 783, 784, 785, 786, 787, 788, 789, 790, 791, 792, 793, 794, 795, 796, 797, 798, 799, 800, 801, 802, 803, 804, 805, 806, 807, 808, 809, 810, 811, 812, 813, 814, 815, 816, 817, 818, 819, 820, 821, 822, 823, 824, 825, 826, 827, 828, 829, 830, 831, 832, 833, 834, 835, 836, 837, 838, 839, 840, 841, 842, 843, 844, 845, 846, 847, 848, 849, 850, 851, 852, 853, 854, 855, 856, 857, 858, 859, 860, 861, 862, 863, 864, 865, 866, 867, 868, 869, 870, 871, 872, 873, 874, 875, 876, 877, 878, 879, 880, 881, 882, 883, 884, 885, 886, 887, 888, 889, 890, 891, 892, 893, 894, 895, 896, 897, 898, 899, 900, 901, 902, 903, 904, 905, 906, 907, 908, 909, 910, 911, 912, 913, 914, 915, 916, 917, 918, 919, 920, 921, 922, 923, 924, 925, 926, 927, 928, 929, 930, 931, 932, 933, 934, 935, 936, 937, 938, 939, 940, 941, 942, 943, 944, 945, 946, 947, 948, 949, 950, 951, 952, 953, 954, 955, 956, 957, 958, 959, 960, 961, 962, 963, 964, 965, 966, 967, 968, 969, 970, 971, 972, 973, 974, 975, 976, 977, 978, 979, 980, 981, 982, 983, 984, 985, 986, 987, 988, 989, 990, 991, 992, 993, 994, 995, 996, 997, 998, 999, 1000

Date
 03/20/2024

Project No.
 AS-B0006

Sheet No.
 001

Scale
 AS-B0006

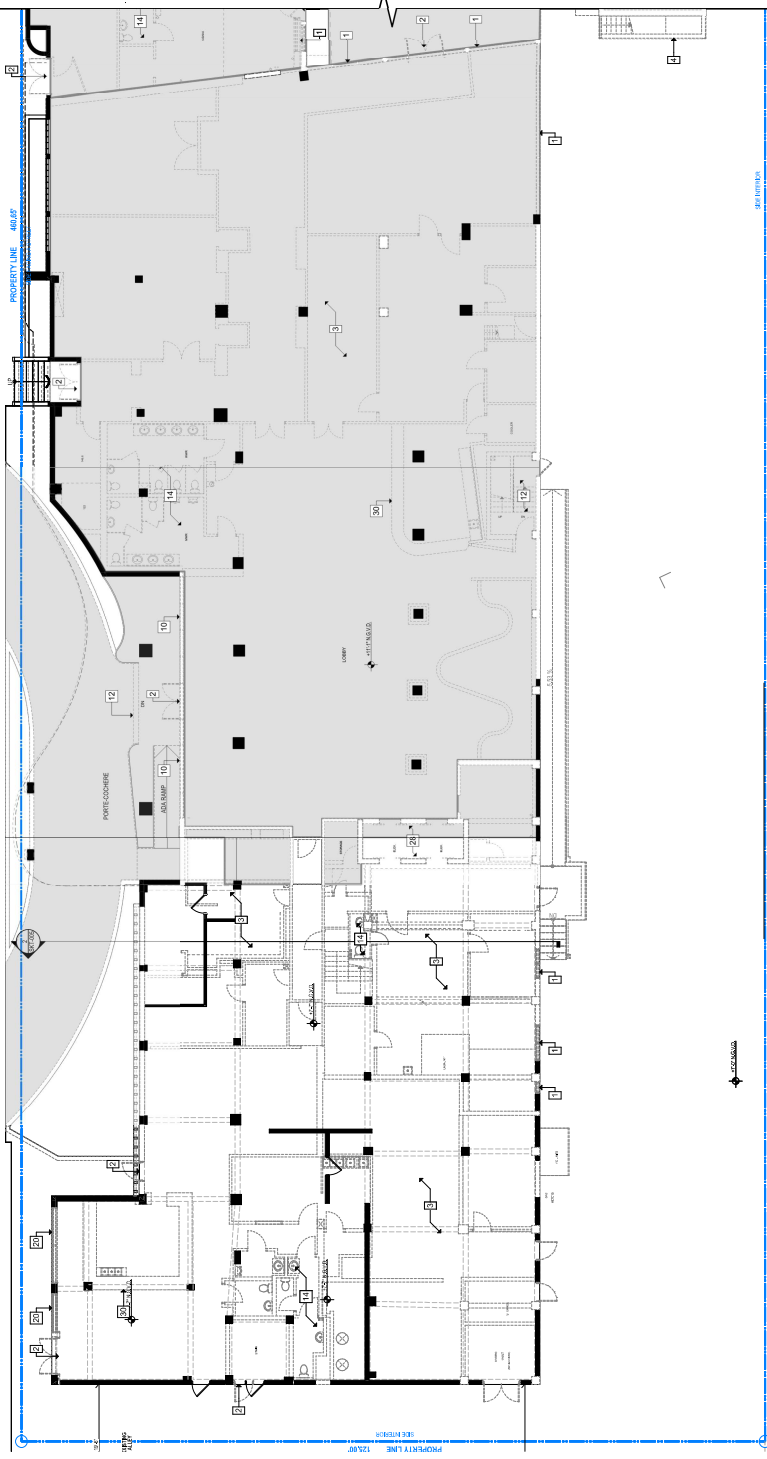
Contractor
 BHJ Miami Limited

Sheet No.
 A-005

NOT FOR CONSTRUCTION

This drawing and the work shown hereon are the copyrighted property of the Architectural Firm named "Revuelta" and shall remain the property of the Architectural Firm named "Revuelta". No part of this drawing may be reproduced, stored in a retrieval system, or transmitted in any form or by any means, electronic, mechanical, photocopying, recording, or by any information storage and retrieval system, without the prior written permission of the Architectural Firm named "Revuelta".

PREVIOUSLY APPROVED
PERMITS 20-0636
24-0636



- SELECTIVE DEMOLITION NOTES**
- 1. REMOVE EXISTING WINDOW AND WINDOW FRAME
 - 2. REMOVE EXISTING DOOR AND DOOR FRAME
 - 3. REMOVE EXISTING INTERIOR WALLS
 - 4. REMOVE EXISTING EXTERIOR WALLS
 - 5. REMOVE EXISTING INTERIOR WALLS
 - 6. REMOVE EXISTING EXTERIOR WALLS
 - 7. REMOVE EXISTING WATER FEATURE
 - 8. REMOVE TRASH CHUTE
 - 9. REMOVE EXISTING MECHANICAL AND ELECTRICAL EQUIPMENT
 - 10. REMOVE EXISTING MECHANICAL AND ELECTRICAL EQUIPMENT
 - 11. REMOVE EXISTING MECHANICAL AND ELECTRICAL EQUIPMENT
 - 12. REMOVE EXISTING MECHANICAL AND ELECTRICAL EQUIPMENT
 - 13. REMOVE EXISTING MECHANICAL AND ELECTRICAL EQUIPMENT
 - 14. REMOVE EXISTING MECHANICAL AND ELECTRICAL EQUIPMENT
 - 15. REMOVE EXISTING MECHANICAL AND ELECTRICAL EQUIPMENT
 - 16. REMOVE EXISTING MECHANICAL AND ELECTRICAL EQUIPMENT
 - 17. REMOVE EXISTING MECHANICAL AND ELECTRICAL EQUIPMENT
 - 18. REMOVE EXISTING MECHANICAL AND ELECTRICAL EQUIPMENT
 - 19. REMOVE EXISTING MECHANICAL AND ELECTRICAL EQUIPMENT
 - 20. REMOVE EXISTING MECHANICAL AND ELECTRICAL EQUIPMENT
 - 21. REMOVE EXISTING MECHANICAL AND ELECTRICAL EQUIPMENT
 - 22. REMOVE EXISTING MECHANICAL AND ELECTRICAL EQUIPMENT
 - 23. REMOVE EXISTING MECHANICAL AND ELECTRICAL EQUIPMENT
 - 24. REMOVE EXISTING MECHANICAL AND ELECTRICAL EQUIPMENT
 - 25. REMOVE EXISTING MECHANICAL AND ELECTRICAL EQUIPMENT
 - 26. REMOVE EXISTING MECHANICAL AND ELECTRICAL EQUIPMENT
 - 27. REMOVE EXISTING MECHANICAL AND ELECTRICAL EQUIPMENT
 - 28. REMOVE EXISTING MECHANICAL AND ELECTRICAL EQUIPMENT
 - 29. REMOVE EXISTING MECHANICAL AND ELECTRICAL EQUIPMENT
 - 30. REMOVE EXISTING MECHANICAL AND ELECTRICAL EQUIPMENT
 - 31. REMOVE EXISTING MECHANICAL AND ELECTRICAL EQUIPMENT
 - 32. REMOVE EXISTING MECHANICAL AND ELECTRICAL EQUIPMENT
 - 33. REMOVE EXISTING MECHANICAL AND ELECTRICAL EQUIPMENT
 - 34. REMOVE EXISTING MECHANICAL AND ELECTRICAL EQUIPMENT
 - 35. REMOVE EXISTING MECHANICAL AND ELECTRICAL EQUIPMENT
 - 36. REMOVE EXISTING MECHANICAL AND ELECTRICAL EQUIPMENT
 - 37. REMOVE EXISTING MECHANICAL AND ELECTRICAL EQUIPMENT
 - 38. REMOVE EXISTING MECHANICAL AND ELECTRICAL EQUIPMENT
 - 39. REMOVE EXISTING MECHANICAL AND ELECTRICAL EQUIPMENT
 - 40. REMOVE EXISTING MECHANICAL AND ELECTRICAL EQUIPMENT
 - 41. REMOVE EXISTING MECHANICAL AND ELECTRICAL EQUIPMENT
 - 42. REMOVE EXISTING MECHANICAL AND ELECTRICAL EQUIPMENT
 - 43. REMOVE EXISTING MECHANICAL AND ELECTRICAL EQUIPMENT
 - 44. REMOVE EXISTING MECHANICAL AND ELECTRICAL EQUIPMENT
 - 45. REMOVE EXISTING MECHANICAL AND ELECTRICAL EQUIPMENT
 - 46. REMOVE EXISTING MECHANICAL AND ELECTRICAL EQUIPMENT
 - 47. REMOVE EXISTING MECHANICAL AND ELECTRICAL EQUIPMENT
 - 48. REMOVE EXISTING MECHANICAL AND ELECTRICAL EQUIPMENT
 - 49. REMOVE EXISTING MECHANICAL AND ELECTRICAL EQUIPMENT
 - 50. REMOVE EXISTING MECHANICAL AND ELECTRICAL EQUIPMENT

- DEMOLITION LEGEND**
- 1. WALLS TO BE DEMOLISHED
 - 2. FLOORS TO BE DEMOLISHED

- 39. PROTECT AND REPAIR HISTORIC GUARDRAIL
- 40. REMOVE EXISTING BATH COUNTERS
- 41. REMOVE ALL ROOFING MATERIALS DOWN TO STRUCTURAL SLAB
- 42. REMOVE NON-HISTORICAL DECORATIVE BLOCK AND RAILING
- 43. REMOVE EXISTING BALCONY AND PARAPET
- 44. EXISTING BALCONY AND PARAPET TO REMAIN
- 45. REMOVE EXISTING PARAPET
- 46. EXISTING BALCONY AND PARAPET TO REMAIN
- 47. REMOVE AND PROTECT EXISTING ETCHED GLASS WINDOWS FOR REUSE ON NEW WINDOWS
- 48. REMOVE NON-HISTORICAL TILE ROOF
- 49. REMOVE EXISTING WINDOW

- 15. REMOVE EXISTING NON-HISTORICAL RAILING
- 16. REMOVE SECTION OF BUILDING IN ITS ENTIRETY AS SHOWN
- 17. REMOVE AND REBUILD EXISTING FLOOR SLAB IN AREA SHOWN
- 18. REMOVE EXISTING WALL FINISH
- 19. REMOVE EXISTING METAL GATE
- 20. REMOVE EXISTING STOREFRONT
- 21. REMOVE EXISTING HISTORICAL RAMP
- 22. REMOVE EXISTING METAL STAIR, SUPPORTS AND RAILINGS
- 23. REMOVE EXISTING EXTERIOR MECHANICAL CHASE
- 24. REMOVE EXISTING INFER WALL
- 25. REMOVE EXISTING METAL FENCE
- 26. REMOVE EXISTING NON-HISTORICAL ORNAMENTATION
- 27. REMOVE EXISTING NON-HISTORICAL FIRE PLACE
- 28. REMOVE EXISTING ELEVATOR AND ASSOCIATED EQUIPMENT

revuelta
ARCHITECTURAL FIRM
1001 N. MIAMI AVENUE
SUITE 1000
MIAMI BEACH, FL 33139
TEL: 305.673.1100
WWW.REVUELTA.COM

CUTLER STEL & PARTNERS
ARCHITECTS
1001 N. MIAMI AVENUE
SUITE 1000
MIAMI BEACH, FL 33139
TEL: 305.673.1100
WWW.CUTLERSTEL.COM

BVLGARI HOTEL
1001 N. MIAMI BEACH
MIAMI BEACH, FL 33139

Revision

Contract Information
BHM Miami Limited
1501 Brickell
Miami Beach, FL 33139
(786) 754-6500
Contract No.

Address
1001 N. MIAMI AVENUE
SUITE 1000
MIAMI BEACH, FL 33139
Lot No. 1001
Map No. 1001
City No. 1001
County No. 1001
State No. 1001
Zip No. 1001

Permit No.
HPB 23-0649

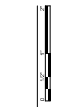
Date
03/20/2024

Project No.
AS 200000

Sheet No.
001

Project Name
BVLGARI HOTEL
1001 N. MIAMI AVENUE
SUITE 1000
MIAMI BEACH, FL 33139

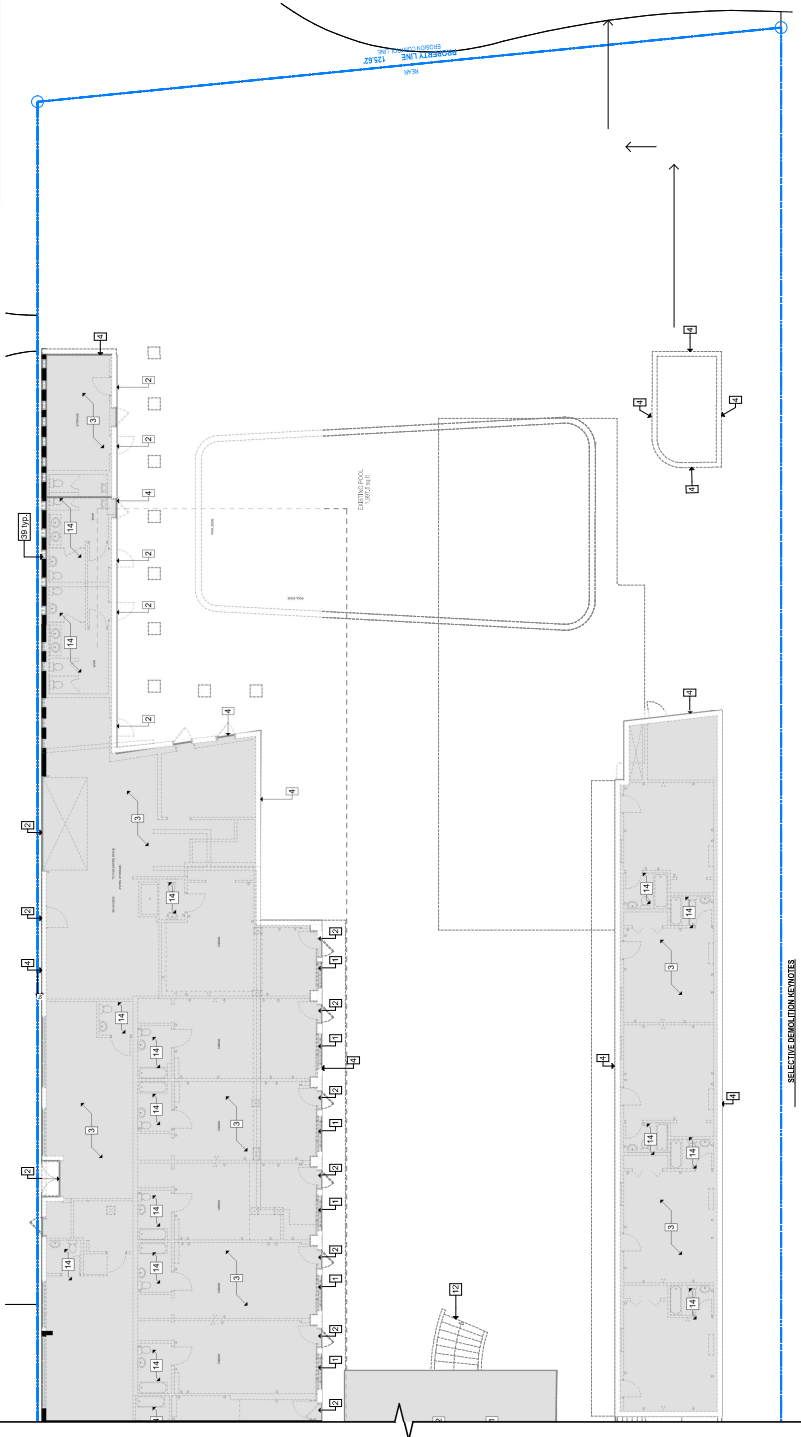
Sheet No.
AD-101a



1
DEMOLITION PLAN
GROUND LEVEL WEST
SCALE: 1/8" = 1'-0"
PREVIOUSLY APPROVED
PERMITS 20-0636
24-0636

NOT FOR CONSTRUCTION

PREVIOUSLY APPROVED
PERMITS 24-06632



- SELECTIVE DEMOLITION REMOVES**
- 1 REMOVE EXISTING WINDOW AND WINDOW FRAME
 - 2 REMOVE EXISTING DOOR AND DOOR FRAME
 - 3 REMOVE EXISTING INTERIOR WALLS
 - 4 REMOVE EXISTING EXTERIOR WALLS
 - 5 REMOVE EXISTING TERRAZZO FLOORING
 - 6 PROTECT AND REPAIR HISTORIC TERRAZZO FLOORING
 - 7 REMOVE WATER FEATURE
 - 8 REMOVE TRASH CHUTE
 - 9 PROTECT AND REPAIR HISTORIC CEILING INCLINING
 - 10 HISTORIC STOREFRONT AND WINDOW TO BE REMOVED
 - 11 ELEVATOR DOOR TO BE REMOVED
 - 12 REMOVE EXISTING STAIR AND RAILINGS
 - 13 REMOVE ALL MECHANICAL AND ELECTRICAL EQUIPMENT
 - 14 REMOVE ALL PLUMBING FIXTURES AND TOILET PARTITIONS

- 15 REMOVE EXISTING NON-HISTORICAL BALCONY
- 16 REWORK SECTION OF BUILDING IN ITS ENTIRETY AS SHOWN
- 17 REMOVE AND REBUILD EXISTING FLOOR SLAB OVER AREA SHOWN
- 18 REMOVE EXISTING WALL FINISH
- 19 REMOVE EXISTING METAL GATE
- 20 REMOVE EXISTING STOREFRONT
- 21 REMOVE EXISTING HISTORICAL SHIP
- 22 REMOVE EXISTING METAL STAIR SUPPORTS AND RAILINGS
- 23 REMOVE EXISTING EXTERIOR MECHANICAL CHASE
- 24 REMOVE EXISTING METAL WALL
- 25 REMOVE EXISTING METAL FENCE
- 26 REMOVE EXISTING NON-HISTORICAL ORNAMENTATION
- 27 REMOVE EXISTING NON-HISTORICAL FIRE PLACE
- 28 REMOVE EXISTING ELEVATOR AND ASSOCIATED EQUIPMENT

- 29 PROTECT AND REPAIR HISTORIC GUARD RAIL
- 30 REMOVE EXISTING BUILT-IN COUNTERS
- 31 REMOVE ALL ROOFING MATERIALS DOWN TO STRUCTURAL SLAB
- 32 REMOVE NON-HISTORICAL DECORATIVE BLOCK AND RAILING
- 33 REMOVE EXISTING BALCONY AND PARAPET
- 34 EXISTING BALCONY AND PARAPET TO REMAIN
- 35 REMOVE EXISTING PARAPET
- 36 EXISTING PAVE PREPARE TO REMAIN
- 37 REMOVE AND PROTECT EXISTING ETCHED GLASS WINDOWS FOR REUSE OVER FLOORS
- 38 REMOVE NON-HISTORICAL TILE ROOF
- 39 REMOVE LOWEDED WINDOW

DEMOLITION LEGEND

- WALLS TO BE DEMOLISHED
- FLOORS TO BE DEMOLISHED

1
DEMOLITION PLAN
GROUND LEVEL EAST
SCALE: 1/8" = 1'-0"



revuelta
ARCHITECTURAL
FLOORING
CONSTRUCTION

revelo
ARCHITECTURAL
FLOORING
CONSTRUCTION

**CUTLER GIBEL
& PARTNERS**
ARCHITECTS
1000 BAYVIEW BLVD
SUITE 1000
MIAMI BEACH, FL 33139

BVLGARI HOTEL
MIAMI BEACH
10025 BAYVIEW
MIAMI BEACH, FL 33139

Revision

Contract Information
BHM Miami Limited
1501 Atlantic
Miami Beach, FL 33139
(781) 784-6504
Contract No.

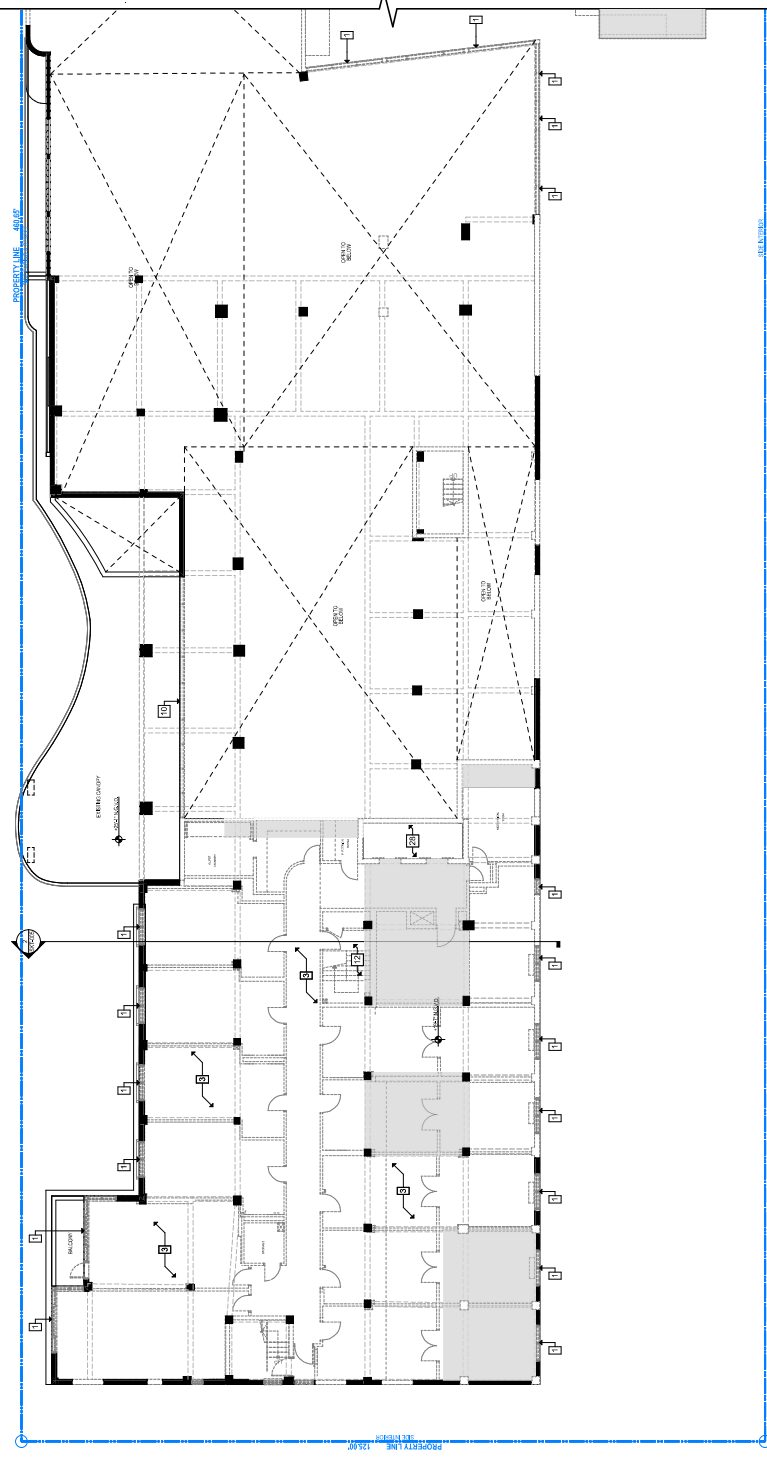
Address
10025 BAYVIEW BLVD
SUITE 1000
MIAMI BEACH, FL 33139
Lot No. 10025
Map No. 10025
City of Miami
County of Miami-Dade
State of Florida

Permit No.
HPB SET
HPB 24-0669

Date
2/28/2024
Project No.
AS 20006
Project Name
BVLGARI HOTEL

Sheet No.
AD-101b

PREVIOUSLY APPROVED
PER HPB 20-0044E
HPB 20-0633



SELECTIVE DEMOLITION LEGEND

- 1. REMOVE EXISTING WINDOW AND WINDOW FRAME
- 2. REMOVE EXISTING DOOR AND DOOR FRAME
- 3. REMOVE EXISTING INTERIOR WALLS
- 4. REMOVE EXISTING EXTERIOR WALL
- 5. REMOVE EXISTING METAL GATE
- 6. PROTECT AND REPAIR HISTORIC TERRAZZO FLOORING
- 7. REMOVE WATER FEATURE
- 8. REMOVE TRASH CHUTE
- 9. PROTECT AND REPAIR HISTORIC CEILING JOISTS
- 10. REMOVE STAIRCASE AND WINDOW TO BE REMOVED
- 11. ELEVATOR DOOR TO BE REMOVED
- 12. REMOVE EXISTING STAIR AND RAILINGS
- 13. REMOVE ALL MECHANICAL AND ELECTRICAL EQUIPMENT
- 14. REMOVE ALL PLUMBING FIXTURES AND TOILET PARTITIONS

- 15. REMOVE EXISTING NON-HISTORICAL FINISH
- 16. REMOVE SECTION OF BUILDING IN ITS ENTIRETY AS SHOWN
- 17. REMOVE AND REBUILD EXISTING FLOOR SLAB IN AREA SHOWN
- 18. REMOVE EXISTING WALL FINISH
- 19. REMOVE EXISTING METAL GATE
- 20. REMOVE EXISTING STOREFRONT
- 21. REMOVE EXISTING HISTORICAL RAMP
- 22. REMOVE EXISTING METAL STAIR, SUPPORTS AND RAILINGS
- 23. REMOVE EXISTING EXTERIOR MECHANICAL CHASE
- 24. REMOVE EXISTING INFER WALL
- 25. REMOVE EXISTING METAL FENCE
- 26. REMOVE EXISTING NON-HISTORICAL ORNAMENTATION
- 27. REMOVE EXISTING NON-HISTORICAL FIRE PLACE
- 28. REMOVE EXISTING ELEVATOR AND ASSOCIATED EQUIPMENT

- 29. PROTECT AND REPAIR HISTORIC GUARDRAIL
- 30. REMOVE EXISTING BATH COUNTERS
- 31. REMOVE ALL ROOFING MATERIALS DOWN TO STRUCTURAL SLAB
- 32. REMOVE NON-HISTORICAL DECORATIVE BLOCK AND RAILING
- 33. REMOVE EXISTING BALCONY AND PARAPET
- 34. EXISTING BALCONY AND PARAPET TO REMAIN
- 35. REMOVE EXISTING PARAPET
- 36. EXISTING FAULTY REPLACE TO REMAIN - REUSE ON NEW ROOFS
- 37. REMOVE AND PROTECT EXISTING ETCHED GLASS WINDOWS FOR REUSE ON NEW ROOFS
- 38. REMOVE NON-HISTORICAL TILE ROOF
- 39. REMOVE COVERED WINDOW

DEMOLITION LEGEND

- WALLS TO BE DEMOLISHED
- FLOORS TO BE DEMOLISHED

1
DEMOLITION PLAN
LEVEL 2 WEST
SCALE: 1/8" = 1'-0"
PREVIOUSLY APPROVED
PER HPB 20-0044E
HPB 20-0633



revuelta
ARCHITECTS
1000 BAYVIEW BLVD
SUITE 100
MIAMI BEACH, FL 33139
TEL: 305.673.1100
WWW.REVUELTA.COM

CUTLER NIEL & PARTNERS
ARCHITECTS
1000 BAYVIEW BLVD
SUITE 100
MIAMI BEACH, FL 33139
TEL: 305.673.1100
WWW.CUTLERNIEL.COM

BVLGARI HOTEL
1000 BAYVIEW BLVD
SUITE 100
MIAMI BEACH, FL 33139

Revision

Contract Information
BH Miami Limited
1501 Brickell Ave
Miami Beach, FL 33139
(786) 754-6500
Contract No.

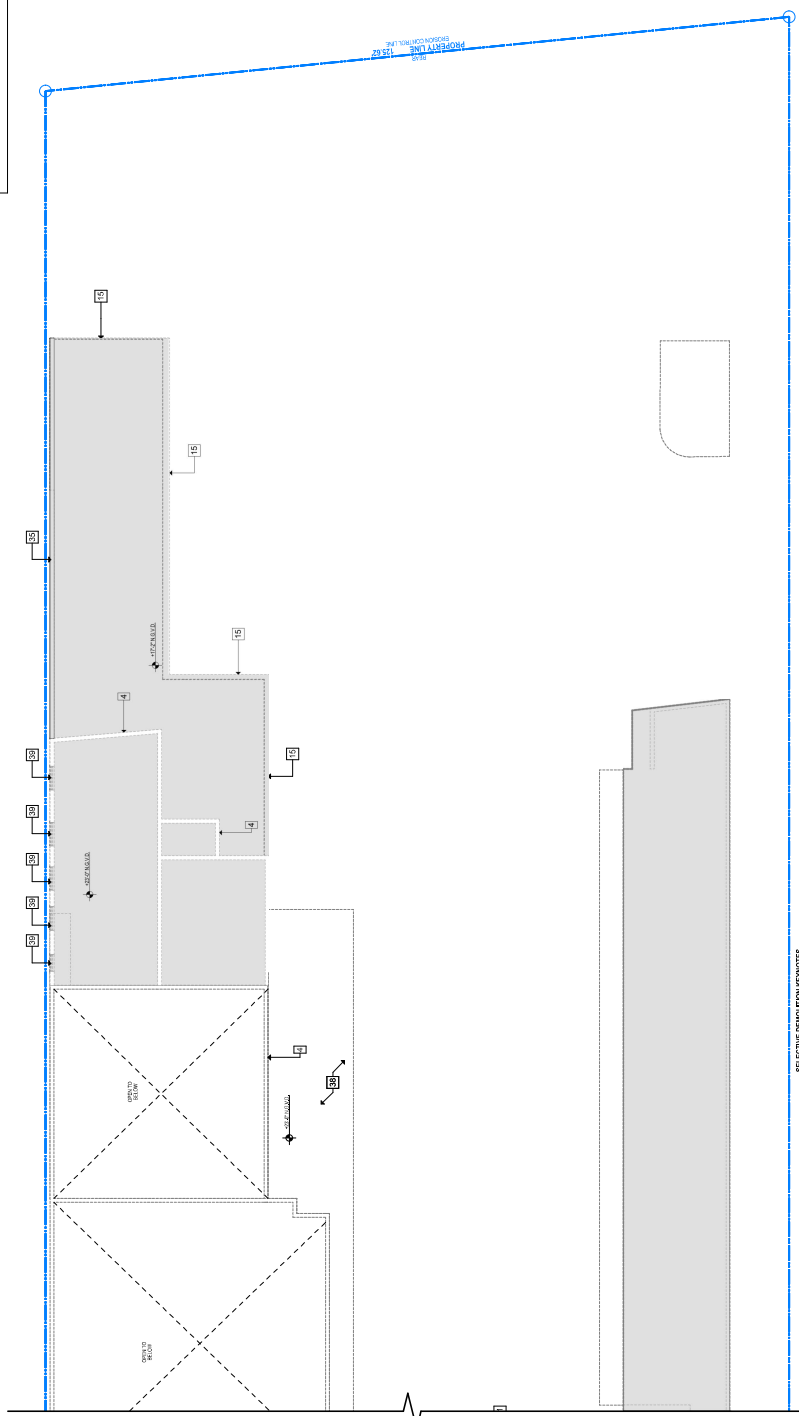
HPB SET
HPB 20-0649
Lynn T. DeLoe, Administrator

Date: 03/28/2020
Drawn By: JAC
AS SHOWN
Project No: 2000
Sheet No: 001

revuelta
ARCHITECTS
1000 BAYVIEW BLVD
SUITE 100
MIAMI BEACH, FL 33139
TEL: 305.673.1100
WWW.REVUELTA.COM

AD-102a

PREVIOUSLY APPROVED
PER HPB 20-00432
HPB 20-06630



- SELECTIVE DEMOLITION REMARKS**
- 1 REMOVE EXISTING WINDOW AND WINDOW FRAME
 - 2 REMOVE EXISTING DOOR AND DOOR FRAME
 - 3 REMOVE EXISTING INTERIOR WALLS
 - 4 REMOVE EXISTING EXTERIOR WALLS
 - 5 PROTECT AND REPAIR HISTORIC TERRAZZO FLOORING
 - 6 PROTECT AND REPAIR HISTORIC STAIR AND RAILINGS
 - 7 REMOVE WATER FEATURE
 - 8 REMOVE TRUSS CHUTE
 - 9 REMOVE HISTORIC CEILING JOCKING
 - 10 PROTECT STAIRFRONT AND WINDOW TO BE REMOVED
 - 11 REMOVE STAIRFRONT AND WINDOW TO BE REMOVED
 - 12 REMOVE EXISTING STAIR AND RAILINGS
 - 13 REMOVE ALL MECHANICAL AND ELECTRICAL EQUIPMENT
 - 14 REMOVE ALL PLUMBING FIXTURES AND TOILET PARTITIONS

- 15 REMOVE EXISTING NON-HISTORICAL RAILING
- 16 REHAUSE SECTION OF BUILDING IN ITS ENTIRETY AS SHOWN
- 17 REMOVE AND REBUILD EXISTING FLOOR SLAB ON AREA SHOWN
- 18 REMOVE EXISTING WALL FINISH
- 19 REMOVE EXISTING METAL GATE
- 20 REMOVE EXISTING STOREFRONT
- 21 REMOVE EXISTING NON-HISTORICAL RAMP
- 22 REMOVE EXISTING METAL STAIR SUPPORTS AND RAILINGS
- 23 REMOVE EXISTING EXTERIOR MECHANICAL CHASE
- 24 REMOVE EXISTING METAL WALL
- 25 REMOVE EXISTING METAL FENCE
- 26 REMOVE EXISTING NON-HISTORICAL ORNAMENTATION
- 27 REMOVE EXISTING NON-HISTORICAL FIRE PLACE
- 28 REMOVE EXISTING ELEVATOR AND ASSOCIATED EQUIPMENT

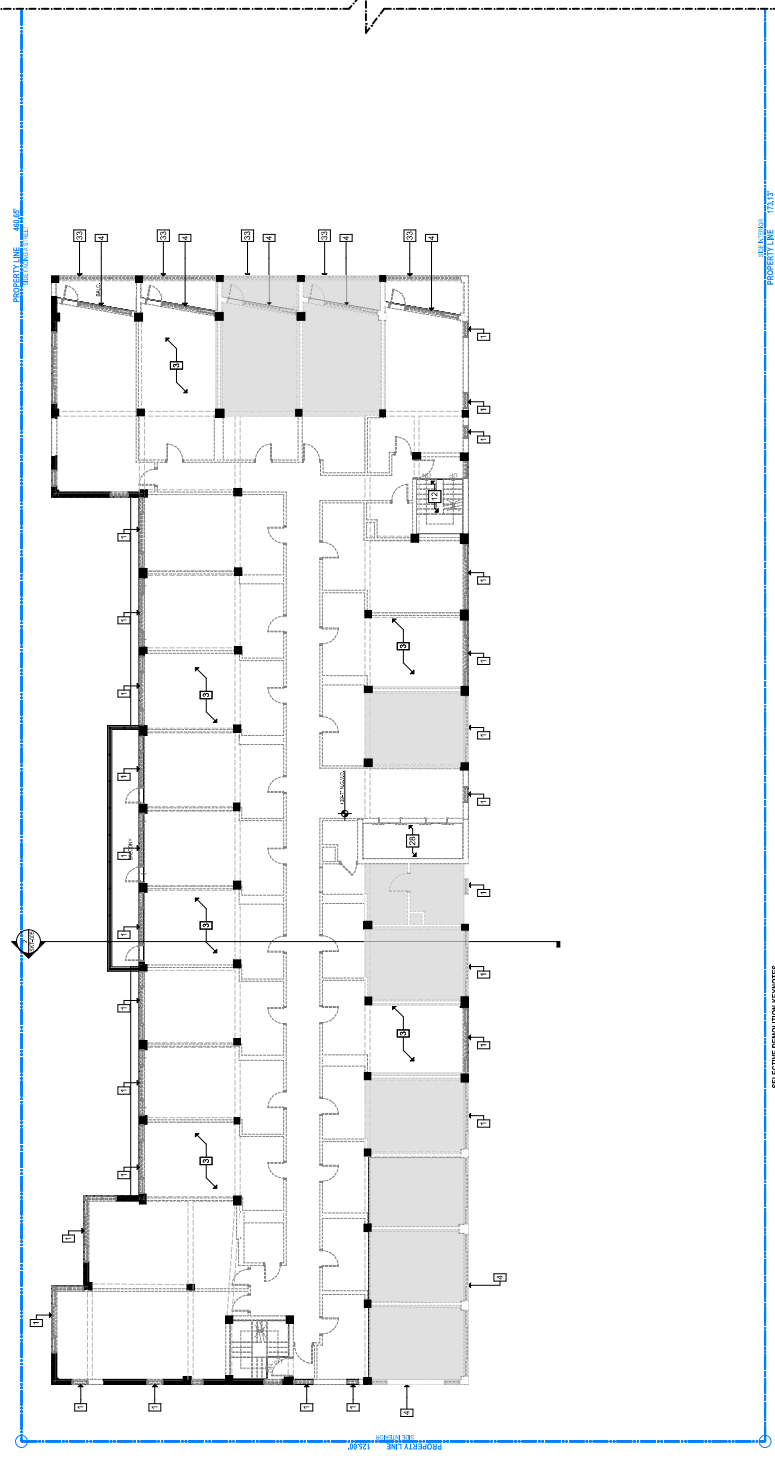
- 29 PROTECT AND REPAIR HISTORIC GUARD RAIL
- 30 REMOVE EXISTING BUILT IN COFFERS
- 31 REMOVE ALL ROOFING MATERIALS DOWN TO STRUCTURAL SLAB
- 32 REMOVE NON-HISTORICAL DECORATIVE BLOCK AND RAILING
- 33 REMOVE EXISTING BALCONY AND PARAPET
- 34 EXISTING BALCONY AND PARAPET TO REMAIN
- 35 REMOVE EXISTING PARAPET
- 36 EXISTING TALK PREPAGE TO REMAIN
- 37 REMOVE AND PROTECT EXISTING LEAD GLASS WINDOWS FOR REUSE ON OTHER DOORS
- 38 REMOVE NON-HISTORICAL TILE ROOF
- 39 REMOVE COMBINED WINDOW

DEMOLITION LEGEND

- WALLS TO BE DEMOLISHED
- FLOORS TO BE DEMOLISHED

1
DEMOLITION PLAN
LEVEL 2 EAST
SCALE: 1/8" = 1'-0"
PREVIOUSLY APPROVED
PER HPB 20-00432
HPB 20-06630

PREVIOUSLY APPROVED
PER HPB 20-00442
HPB 24-0633



- SELECTIVE DEMOLITION NOTES**
- 1. REMOVE EXISTING WINDOW AND WINDOW FRAME
 - 2. REMOVE EXISTING DOOR AND DOOR FRAME
 - 3. REMOVE EXISTING INTERIOR WALLS
 - 4. REMOVE EXISTING EXTERIOR WALLS
 - 5. PROTECT AND REPAIR HISTORIC TERRAZZO FLOORING
 - 6. PROTECT AND REPAIR HISTORIC STAIR AND RAILINGS
 - 7. REMOVE WATER FEATURE
 - 8. REMOVE TRASH CHUTE
 - 9. PROTECT AND REPAIR HISTORIC CEILING JOISTS
 - 10. REMOVE STOREROOM AND WINDOW TO BE REMOVED
 - 11. ELEVATOR DOOR TO BE REMOVED
 - 12. REMOVE EXISTING STAIR AND RAILINGS
 - 13. REMOVE ALL MECHANICAL AND ELECTRICAL EQUIPMENT
 - 14. REMOVE ALL PLUMBING FIXTURES AND TOILET PARTITIONS
 - 15. REMOVE EXISTING NON-HISTORICAL RAILING
 - 16. DEMOLISH SECTION OF BUILDING IN ITS ENTIRETY AS SHOWN
 - 17. REMOVE AND REBUILD EXISTING FLOOR SLAB IN AREA SHOWN
 - 18. REMOVE EXISTING WALL FINISH
 - 19. REMOVE EXISTING METAL GATE
 - 20. REMOVE EXISTING STOREFRONT
 - 21. REMOVE EXISTING NON-HISTORICAL RAMP
 - 22. REMOVE EXISTING METAL STAIR, SUPPORTS AND RAILINGS
 - 23. REMOVE EXISTING EXTERIOR MECHANICAL CHASE
 - 24. REMOVE EXISTING INFER WALL
 - 25. REMOVE EXISTING METAL FENCE
 - 26. REMOVE EXISTING NON-HISTORICAL ORNAMENTATION
 - 27. REMOVE EXISTING NON-HISTORICAL FIRE PLACE
 - 28. REMOVE EXISTING ELEVATOR AND ASSOCIATED EQUIPMENT
 - 29. PROTECT AND REPAIR HISTORIC GUARD RAIL
 - 30. REMOVE EXISTING BATH COUNTERS
 - 31. REMOVE ALL ROOFING MATERIALS DOWN TO STRUCTURAL SLAB
 - 32. REMOVE NON-HISTORICAL DECORATIVE BLOCK AND RAILING
 - 33. REMOVE EXISTING BALCONY AND PARAPET
 - 34. EXISTING BALCONY AND PARAPET TO REMAIN
 - 35. REMOVE EXISTING PARAPET
 - 36. EXISTING FAULTY PARAPET TO REMAIN - REUSE ON NEW ROOFS
 - 37. REMOVE AND PROTECT EXISTING ETCHED GLASS WINDOWS FOR REUSE ON NEW ROOFS
 - 38. REMOVE NON-HISTORICAL TILE ROOF
 - 39. REMOVE COVERED WINDOW

DEMOLITION LEGEND

--- WALLS TO BE DEMOLISHED

--- FLOORS TO BE DEMOLISHED

1
DEMOLITION PLAN
LEVEL 4 THROUGH 7
SCALE: 1/8" = 1'-0"
PREVIOUSLY APPROVED
PER HPB 20-00442
HPB 24-0633

revuelta
ARCHITECTS
1000 BAYVIEW BLVD
SUITE 100
MIAMI BEACH, FL 33139
TEL: 305.442.1100
WWW.REVUELTA.COM

Client: BVLGARI HOTEL
Project: DEMOLITION
Date: 08/20/2024
Project No: 24-0633
Sheet No: 001

CUTLER ANGEL
& PARTNERS
ARCHITECTS
1000 BAYVIEW BLVD
SUITE 100
MIAMI BEACH, FL 33139
TEL: 305.442.1100
WWW.CUTLERANGEL.COM

BVLGARI HOTEL
2315 STREET
MIAMI BEACH, FL 33139

Revision:

Contractor:
BIM Miami Limited
1501 Avenue
Miami Beach, FL 33139
(786) 754-6504
Contract:

Address:
1000 BAYVIEW BLVD
SUITE 100
MIAMI BEACH, FL 33139
City: MIAMI BEACH
State: FL
Zip: 33139
Lot: 1000 BAYVIEW BLVD
Sublot: 1000 BAYVIEW BLVD
Map No: 1000 BAYVIEW BLVD
County: MIAMI BEACH
City: MIAMI BEACH
State: FL
Zip: 33139

City: MIAMI BEACH
State: FL
Zip: 33139

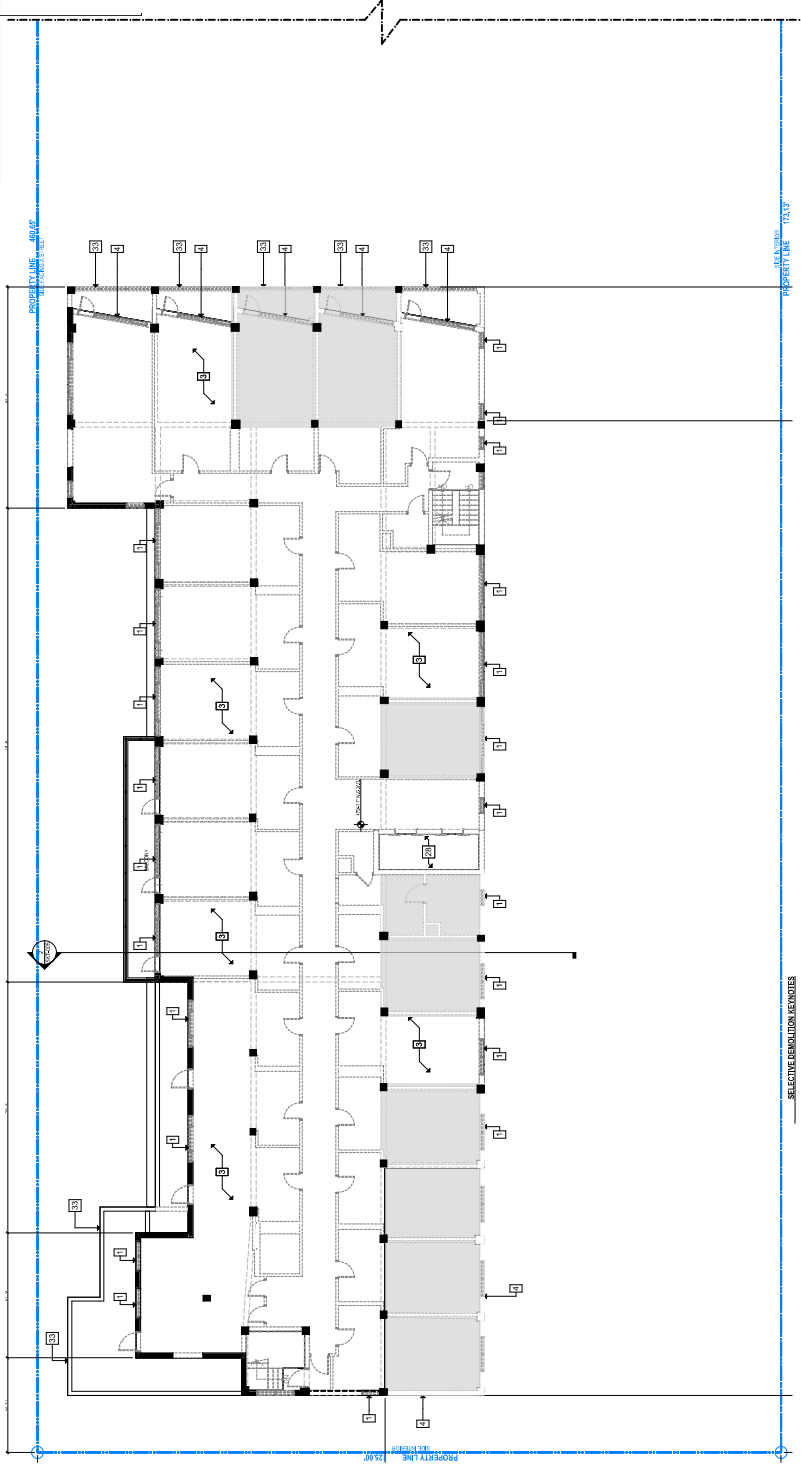
Date: 08/20/2024
Drawn By: JAC
Checked By: JAC
Project No: 24-0633
Sheet No: 001

HPB SET
HPB 24-0633
Lynn S. DeLoe, Administrator
Lynn S. DeLoe, Administrator
Lynn S. DeLoe, Administrator

AD-104
Sheet No.

NOT FOR CONSTRUCTION

PREVIOUSLY APPROVED
PER HPB 20-04-042
HPB 24-06-030



SELECTIVE DEMOLITION NOTES

- 1. REMOVE EXISTING WINDOW AND WINDOW FRAME
- 2. REMOVE EXISTING DOOR AND DOOR FRAME
- 3. REMOVE EXISTING INTERIOR WALLS
- 4. REMOVE EXISTING EXTERIOR WALLS
- 5. REMOVE EXISTING INTERIOR WALLS
- 6. PROTECT AND REPAIR HISTORIC TERRAZZO FLOORING
- 7. PROTECT AND REPAIR HISTORIC STAIR AND RAILINGS
- 8. REMOVE WATER FEATURE
- 9. REMOVE TRASH CHUTE
- 10. PROTECT AND REPAIR HISTORIC CEILING JOISTS
- 11. REMOVE STAIRCASE AND WINDOW TO BE REMOVED
- 12. REMOVE EXISTING STAIR AND RAILINGS
- 13. REMOVE ALL MECHANICAL AND ELECTRICAL EQUIPMENT
- 14. REMOVE ALL PLUMBING FIXTURES AND TOILET PARTITIONS

DEMOLITION LEGEND

- 15. REMOVE EXISTING NON-HISTORICAL FINISH
- 16. DEMOLISH SECTION OF BUILDING IN ITS ENTIRETY AS SHOWN
- 17. REMOVE AND REBUILD EXISTING FLOOR SLAB IN AREA SHOWN
- 18. REMOVE EXISTING WALL FINISH
- 19. REMOVE EXISTING METAL GATE
- 20. REMOVE EXISTING STOREFRONT
- 21. REMOVE EXISTING NON-HISTORICAL RAMP
- 22. REMOVE EXISTING METAL STAIR, SUPPORTS AND RAILINGS
- 23. REMOVE EXISTING EXTERIOR MECHANICAL CHASE
- 24. REMOVE EXISTING INFER WALL
- 25. REMOVE EXISTING METAL FENCE
- 26. REMOVE EXISTING NON-HISTORICAL ORNAMENTATION
- 27. REMOVE EXISTING NON-HISTORICAL FIRE PLACE
- 28. REMOVE EXISTING ELEVATOR AND ASSOCIATED EQUIPMENT

DEMOLITION LEGEND

- 29. PROTECT AND REPAIR HISTORIC GUARDRAIL
- 30. REMOVE EXISTING BATH COUNTERS
- 31. REMOVE ALL ROOFING MATERIALS DOWN TO STRUCTURAL SLAB
- 32. REMOVE NON-HISTORICAL DECORATIVE BLOCK AND RAILING
- 33. REMOVE EXISTING BALCONY AND PARAPET
- 34. REMOVE EXISTING BALCONY AND PARAPET TO REMAIN
- 35. REMOVE EXISTING PARAPET
- 36. REMOVE EXISTING PARAPET TO REMAIN
- 37. REMOVE AND PROTECT EXISTING ETCHED GLASS WINDOWS FOR REUSE ON NEW WINDOWS
- 38. REMOVE NON-HISTORICAL TILE ROOF
- 39. REMOVE COVERED WINDOW



DEMOLITION PLAN
LEVEL 8
SCALE: 1/8" = 1'-0"

PREVIOUSLY APPROVED
PER HPB 20-04-042
HPB 24-06-030

revuelta
ARCHITECTS
1000 BAYVIEW BLVD
SUITE 100
MIAMI BEACH, FL 33139
TEL: 305.673.1100
WWW.REVUELTA.COM

CUTLER STEL & PARTNERS
ARCHITECTS
1000 BAYVIEW BLVD
SUITE 100
MIAMI BEACH, FL 33139
TEL: 305.673.1100
WWW.CUTLERSTEL.COM

BVLGARI HOTEL
3301 COLLIER BLVD
MIAMI BEACH, FL 33139

Revision

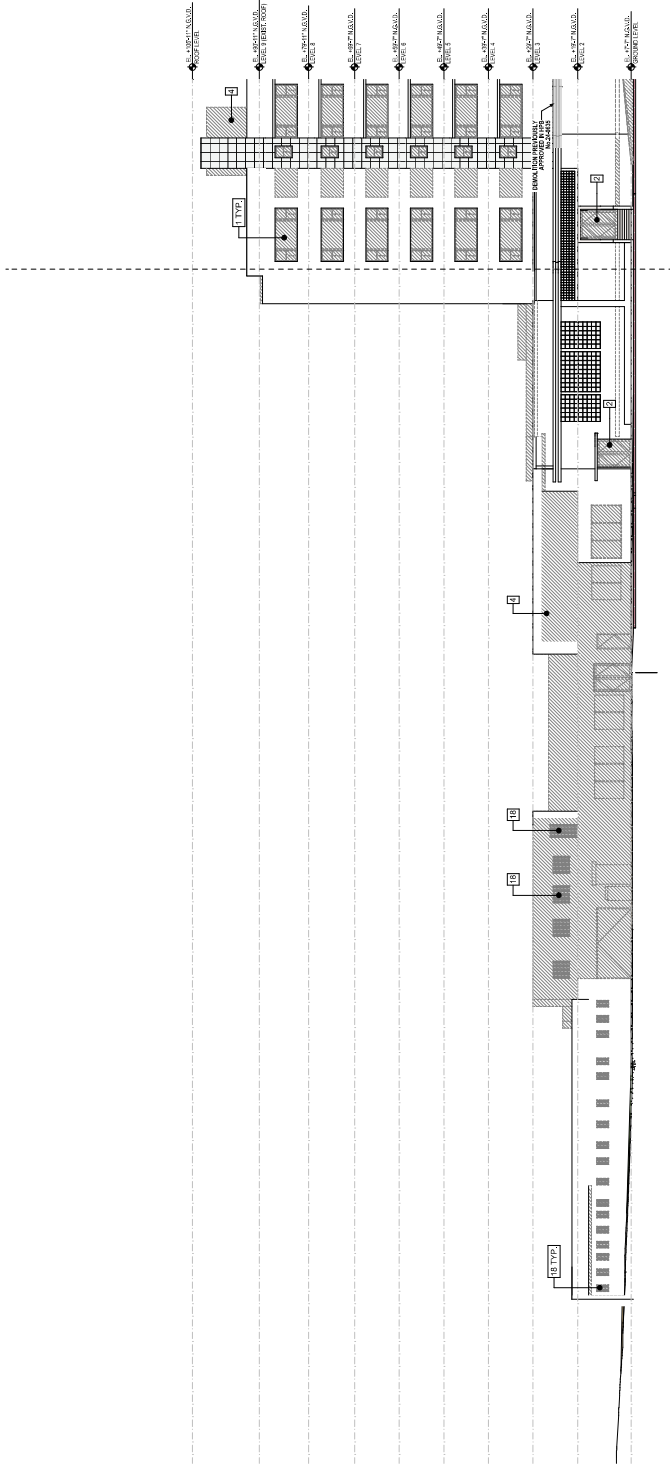
Contractor
BHJ Miami Limited
1501 ALHAMBRA
MIAMI BEACH, FL 33139
(781) 784-6500
Contractor

HPB SET
HPB 24-06-030

Date: 02/28/2024
Scale: AS SHOWN
Project: BVLGARI HOTEL
Sheet: 008

LEVEL 8 - DEMOLITION PLAN
Sheet No. **AD-108**

PREVIOUSLY APPROVED
PER HPB 20-04-042
24-0633



- ELEVATION DEMOLITION KEYNOTES**
- 1 REMOVE EXISTING WINDOW AND WINDOW FRAME
 - 2 REMOVE EXISTING DOOR AND DOOR FRAME
 - 3 REMOVE EXISTING METAL GRILL WORK
 - 4 REMOVE EXISTING EXTERIOR WALL
 - 5 REMOVE EXISTING NON-HISTORICAL LIGHT FIXTURE
 - 6 REMOVE EXISTING BRICK FINISH
 - 7 REMOVE ALL EXISTING EXPOSED PIPE, DOWN SPOUTS AND ELECTRICAL CONDUITS
 - 8 REMOVE EXISTING WALL FINISH
 - 9 REMOVE EXISTING WINDOW TO BE DEMOLISHED
 - 10 REMOVE EXISTING CANVAS AWNING AND ITS SUPPORT STRUCTURE
 - 11 REMOVE ALL EXPOSED EXTERIOR AIR CONDITIONING UNITS
 - 12 REMOVE EXISTING NON-HISTORICAL RAILING

- 14 REMOVE EXISTING NON-HISTORICAL DECORATIVE BLOCK
- 15 REMOVE EXISTING NON-HISTORICAL GLASS BLOCK
- 16 REMOVE EXISTING NON-HISTORICAL TILE ROOF
- 17 REMOVE EXISTING SIGN
- 18 REMOVE EXISTING SIGN
- 19 REMOVE EXISTING NON-HISTORICAL WINDOW
- 20 REMOVE EXISTING NON-HISTORICAL PAMP
- 21 REMOVE EXISTING STOREFRONT
- 22 REMOVE EXISTING COLUMNS
- 23 REMOVE EXISTING SHUTTERS AND ASSOCIATED EQUIPMENT
- 24 REMOVE EXISTING BALCONY WALL
- 25 REMOVE EXISTING BILLING OR SECTION OF BUILDING IN ITS ENTIRETY
- 26 REMOVE EXISTING WOOD TERRACE AND STAIRS
- 27 REMOVE EXISTING NON-HISTORICAL ORNAMENTATION
- 28 REMOVE EXISTING NON-HISTORICAL DECORATIVE PLASTER

- 32 REMOVE EXISTING WINE WALL
- 33 REMOVE EXISTING EXTERIOR MECHANICAL CHASE
- 34 REMOVE EXISTING STAIR ENCLOSURE
- 35 REMOVE EXISTING METAL STAIR SUPPORTS AND RAILINGS
- 36 REMOVE EXISTING BALCONY AND GUARDRAIL
- 37 EXISTING BALCONY AND PARAPET TO REMAIN
- 38 REMOVE EXISTING PARAPET
- 39 REMOVE EXISTING FIBERON ON SECTION OF EXISTING FIBERON AS SHOWN
- 40 REMOVE EXISTING ROOF

DEMOLITION LEGEND
 [Hatched Pattern] TO BE DEMOLISHED

FOR REFERENCE ONLY - NO CHANGES

1
 DEMOLITION ELEVATION
 PARTIAL NORTH ELEVATION | EAST
 SCALE: 1/8" = 1'-0"
 PREVIOUSLY APPROVED
 PER HPB 20-04-042
 24-0633

revuelta
 ARCHITECTURE
 1000 BAYVIEW BLVD
 SUITE 100
 MIAMI BEACH, FL 33139
 (305) 531-1100
 www.revuelta.com

Client:
 BVLGARI HOTEL
 1000 BAYVIEW BLVD
 SUITE 100
 MIAMI BEACH, FL 33139
 (305) 531-1100
 www.revuelta.com

Project:
 BVLGARI HOTEL
 1000 BAYVIEW BLVD
 SUITE 100
 MIAMI BEACH, FL 33139
 (305) 531-1100
 www.revuelta.com

BVLGARI HOTEL
 1000 BAYVIEW BLVD
 SUITE 100
 MIAMI BEACH, FL 33139

Revision:

Contract Information:
 BIM Model Linked
 1000 BAYVIEW BLVD
 SUITE 100
 MIAMI BEACH, FL 33139
 (305) 531-1100
 www.revuelta.com

Address:
 1000 BAYVIEW BLVD
 SUITE 100
 MIAMI BEACH, FL 33139
 (305) 531-1100
 www.revuelta.com

HPB SET
 HPB 24-0633

Date:
 08/26/2024
 AS SHOWN
 08/26/2024

Project No.:
 24-0633
 Sheet No.:
 AD-401b

PREVIOUSLY APPROVED
PER HPB 24-0633
24-0633

revuelta
ARCHITECTURAL
FIRM

**CUTLER DEL
& PARTNERS**
ARCHITECTS
1000 BAYVIEW BLVD
SUITE 1000
MIAMI BEACH, FL 33139
TEL: 305.673.1100
WWW.CUTLERDEL.COM

BYLGARI HOTEL
MIAMI BEACH
4300 COLLIER BLVD
MIAMI BEACH, FL 33139

BYLGARI HOTEL
MIAMI BEACH
4300 COLLIER BLVD
MIAMI BEACH, FL 33139

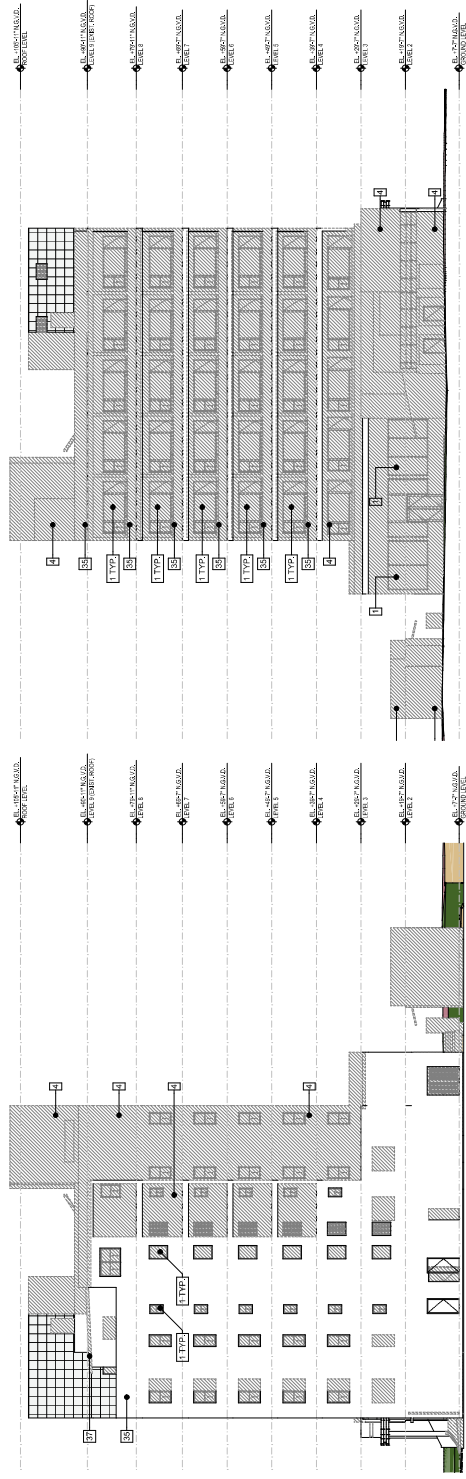
Revision

Contractor
BH Miami Limited
1501 Atlantic
Miami Beach, FL 33139
(781) 784-6404
Contractor

HPB SET
HPB 24-0649

Date:
Drawing No.:
Project No.:
Scale:
Sheet No.:

AD-403



FOR REFERENCE ONLY -- NO CHANGES

EAST ELEVATION

WEST ELEVATION

- ELEVATION DEMOLITION SCHEDULES**
- 1. REMOVE EXISTING WINDOW AND WINDOW FRAME
 - 2. REMOVE EXISTING DOOR AND DOOR FRAME
 - 3. REMOVE EXISTING METAL GRILL WORK
 - 4. REMOVE EXISTING EXTERIOR WALL
 - 5. REMOVE EXISTING NON-HISTORICAL LIGHT FIXTURE
 - 6. REMOVE EXISTING BRICK FINISH
 - 7. REMOVE ALL EXISTING EXPOSED PIPE, DOWN SPOUTS AND ELECTRICAL CONDUITS
 - 8. REMOVE ALL EXPOSED DUCTS AND MECHANICAL EQUIPMENT
 - 9. REMOVE EXISTING WALL FINISH
 - 10. REMOVE STOREFRONT AND WINDOW TO BE DEMOLISHED
 - 11. REMOVE EXISTING CANVAS AWNING AND ITS SUPPORT STRUCTURE
 - 12. REMOVE ALL EXPOSED EXTERIOR AIR CONDITIONING UNITS
 - 13. REMOVE EXISTING NON-HISTORICAL RAILING

- 14. REMOVE EXISTING NON-HISTORICAL DECORATIVE BLOCK
- 15. REMOVE EXISTING NON-HISTORICAL GLASS BLOCK
- 16. REMOVE EXISTING NON-HISTORICAL TILE ROOF
- 17. REMOVE EXISTING SIGN
- 18. REMOVE EXISTING NON-HISTORICAL WINDOW
- 19. REMOVE EXISTING NON-HISTORICAL LAMP
- 20. REMOVE EXISTING STOREFRONT
- 21. REMOVE EXISTING COLUMNS
- 22. REMOVE EXISTING SHUTTERS AND ASSOCIATED EQUIPMENT
- 23. REMOVE EXISTING BALCONY WALL
- 24. DEMOLISH BILLING OR SECTION OF BUILDING IN ITS ENTIRETY
- 25. REMOVE EXISTING WOOD TERRACE AND STAIRS
- 26. REMOVE EXISTING NON-HISTORICAL ORNAMENTATION
- 27. REMOVE EXISTING NON-HISTORICAL DECORATIVE PLASTER

- 28. REMOVE EXISTING ANTE WALL
- 29. REMOVE EXISTING EXTERIOR MECHANICAL CHASE
- 30. REMOVE EXISTING STAIR ENCLOSURE
- 31. REMOVE EXISTING METAL STAIR SUPPORTS AND RAILINGS
- 32. REMOVE EXISTING BALCONY AND GUARDRAIL
- 33. EXISTING BALCONY AND PARAPET TO REMAIN
- 34. REMOVE EXISTING PARAPET
- 35. REMOVE EXISTING FIBERWOL ON SECTION OF EXISTING FIBERWOL AS SHOWN
- 36. REMOVE EXISTING ROOF

DEMOLITION LEGEND
----- TO BE DEMOLISHED

DEMOLITION ELEVATIONS

PREVIOUSLY APPROVED
PER HPB 24-0633

NOT FOR CONSTRUCTION

This Drawing and the Work it Represents are the property of the Architect. No part of this Drawing may be reproduced, stored in a retrieval system, or transmitted in any form or by any means, electronic, mechanical, photocopying, recording, or by any information storage and retrieval system, without the prior written permission of the Architect. The Architect shall not be responsible for any errors or omissions in this Drawing. The Contractor shall be responsible for obtaining all necessary permits and for complying with all applicable laws, codes, and regulations. The Contractor shall be responsible for protecting all existing structures and utilities on the site. The Contractor shall be responsible for maintaining access to all adjacent properties at all times. The Contractor shall be responsible for obtaining all necessary insurance and bonding. The Contractor shall be responsible for obtaining all necessary approvals from the relevant authorities. The Contractor shall be responsible for obtaining all necessary approvals from the relevant authorities. The Contractor shall be responsible for obtaining all necessary approvals from the relevant authorities.

