

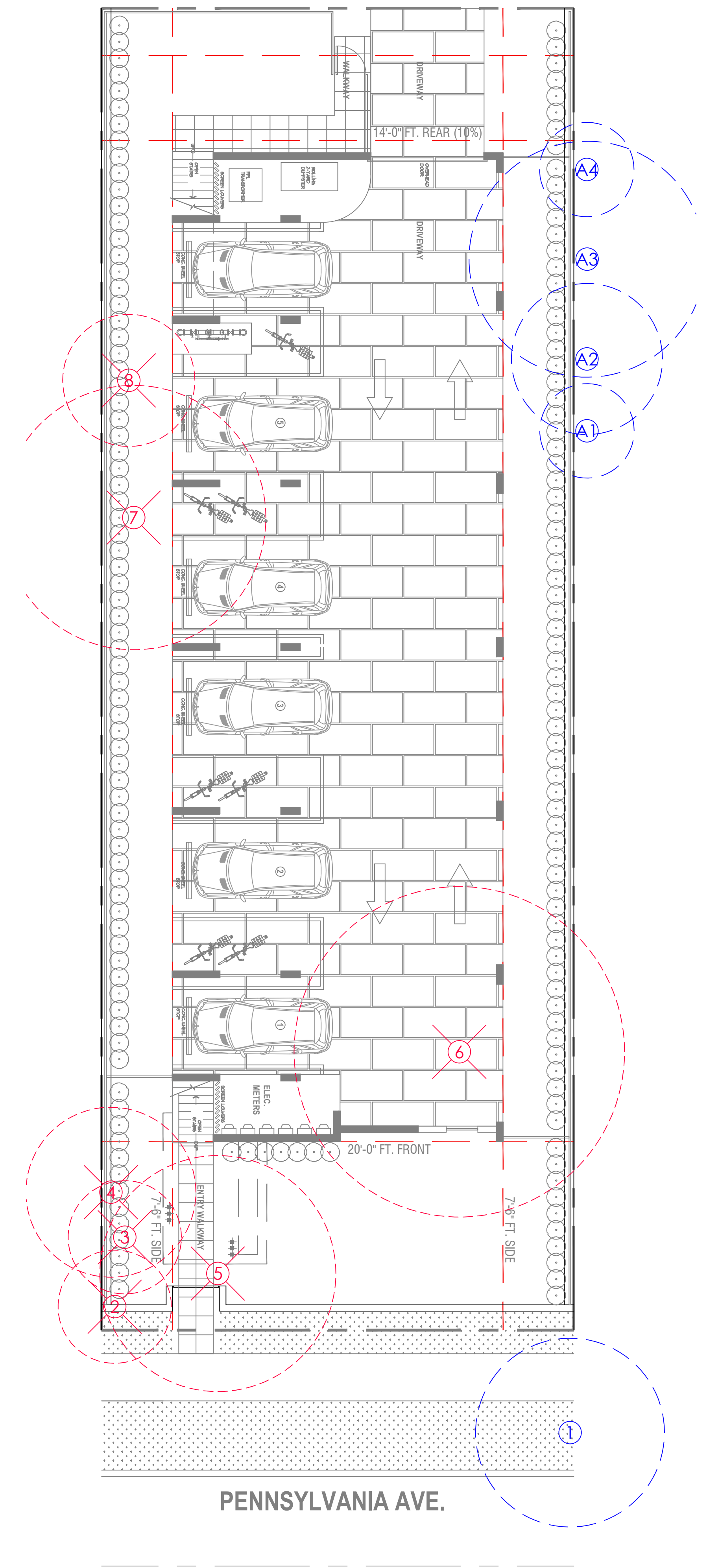
**NEW MULTIFAMILY RESIDENCE**  
1020 PENNSYLVANIA  
MIAMI BEACH, FLORIDA

REVISIONS
1/30/25 SITE PLAN

DRAWN BY DV
DATE 12/28/23
SCALE 1/8"=1'-0"
DRAWING TITLE TREE SURVEY PLAN

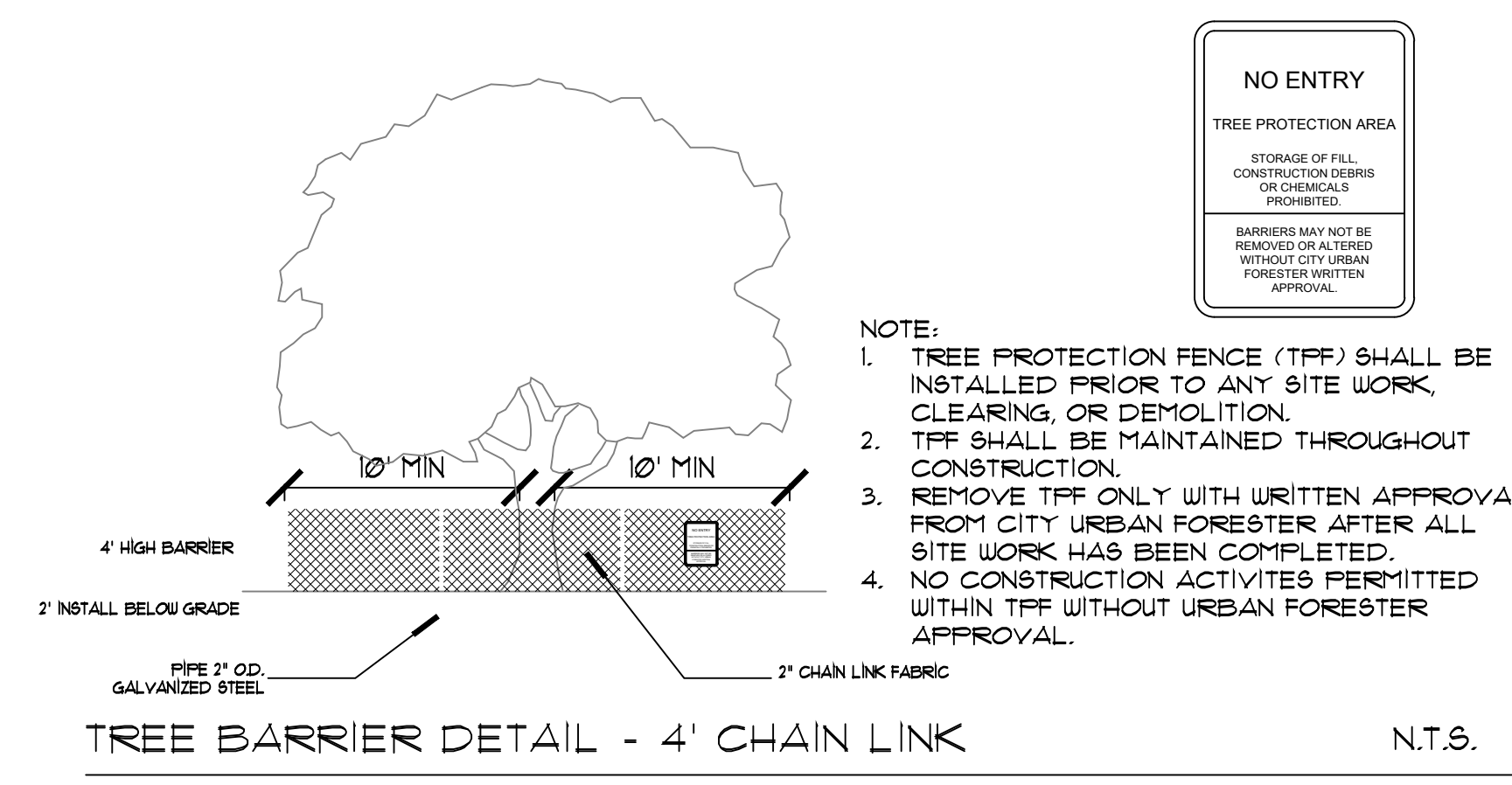
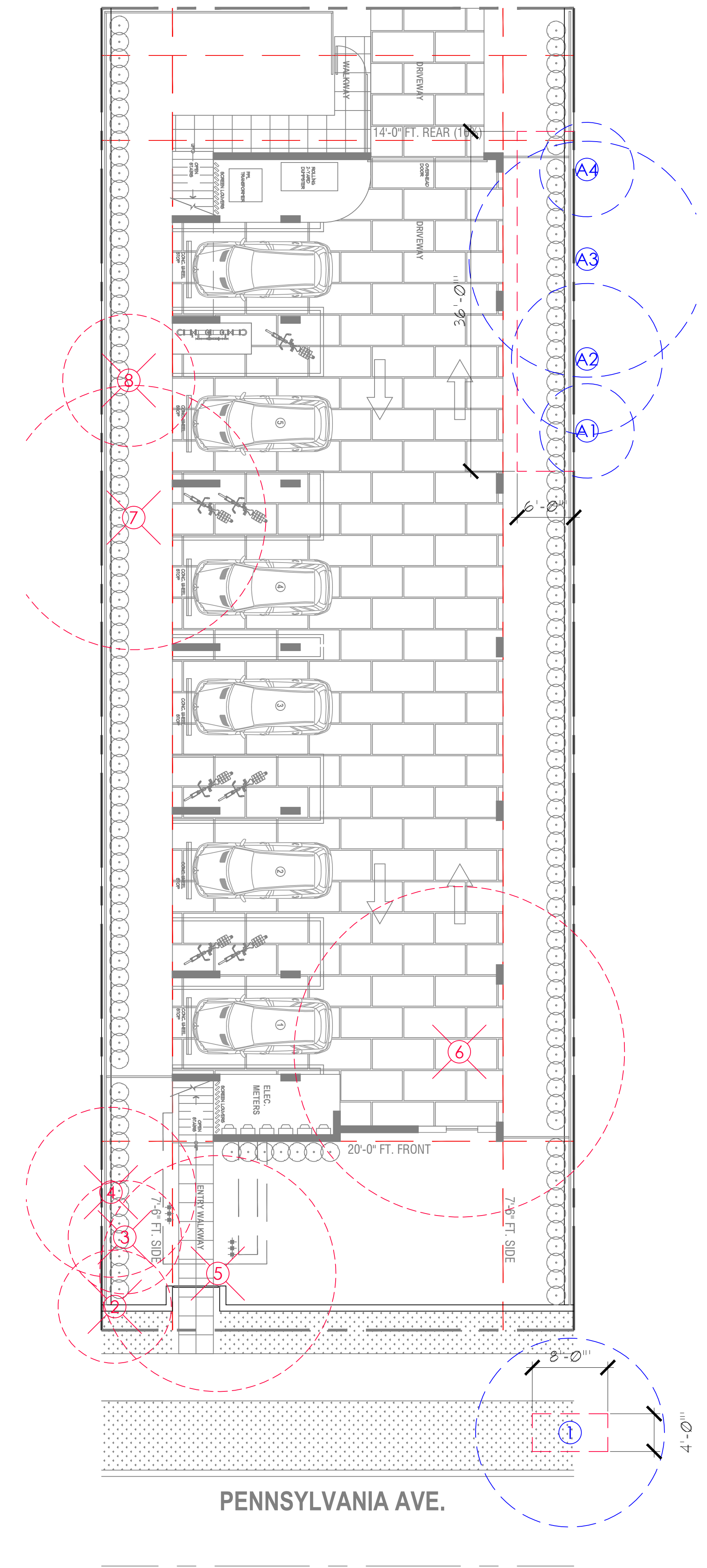
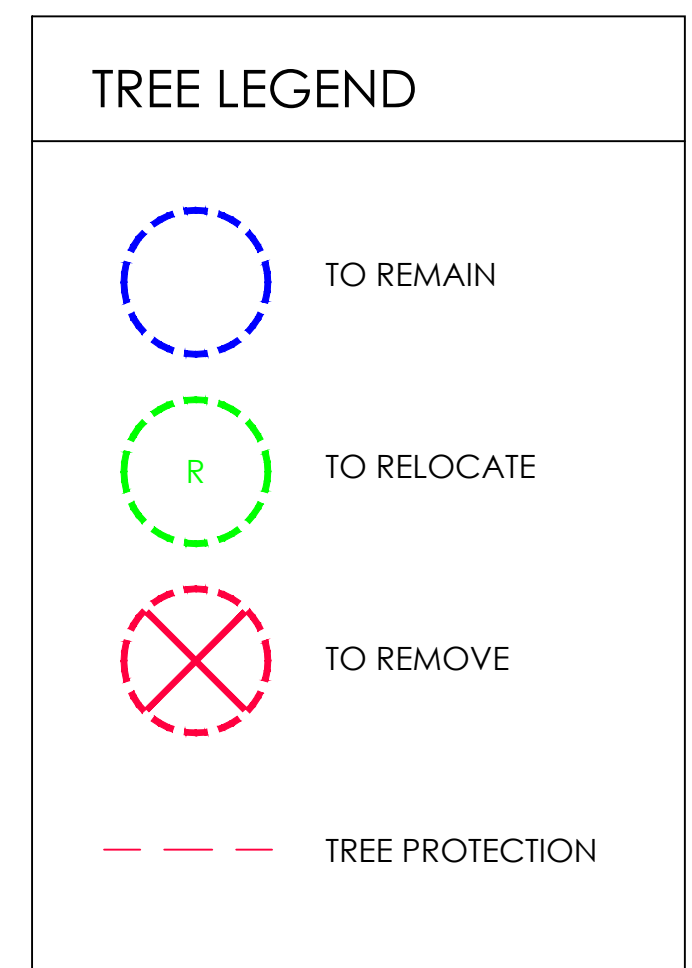
SHEET  
**L100**

Tree Survey / Disposition					
No	Botanical Name	Common Name	DBH (in)	Height (ft)	Spread (ft)
1	<i>Cordia sebestena</i>	Orange Geiger	1, 3, 4, 6, 7	25	25
2	<i>Livistonia chinensis</i>	Chinese Fan Palm	12	50	15
3	<i>Livistonia chinensis</i>	Chinese Fan Palm	17	45	15
4	<i>Bursera simaruba</i>	Gumbo Limbo	11	30	25
5	<i>Ficus benjamina</i>	Weeping Ficus	14	30	30
6	<i>Ficus elastica</i>	Rubber Tree	35	30	35
7	<i>Ficus nitida</i>	Indian-Cuban Laurel	8, 13	30	30
8	<i>Schinus terebinthifolius</i>	Brazilian Pepper	6x2, 4x3	15	15
A1	<i>Ficus aurea</i>	Strangler Fig	11, 14	30	25
A2	<i>Bischofia javonica</i>	Bischofia	4x4, 3	18	15
A3	<i>Persea americana</i>	Avocado	6, 10	18	25
A4	<i>Ficus benjamina</i>	Weeping Ficus	1, 4, 6	18	16



**PENNSYLVANIA AVE.**

Tree Survey / Disposition									DBH (in)	Palms
No	Botanical Name	Common Name	DBH (in)	Height (ft)	Spread (ft)	Condition	Disposition	Remarks	Removed	Removed
1	Cordia sebestena	Orange Geiger	1, 3, 4, 6, 7	25	25	Fair	Remain	City tree		
2	Livistonia chinensis	Chinese Fan Palm	12	50	15	Fair	Remove			1
3	Livistonia chinensis	Chinese Fan Palm	17	45	15	Fair	Remove			1
4	Bursera simaruba	Gumbo Limbo	11	30	25	Fair	Remove		11	
5	Ficus benjamina	Weeping Ficus	14	30	30	Poor	Remove	Prohibited species		
6	Ficus elastica	Rubber Tree	35	30	35	Good	Remove	Prohibited species		
7	Ficus nitida	Indian-Cuban Laurel	8, 13	30	30	Fair	Remove	Prohibited species		
8	Schinus terebinthifolius	Brazilian Pepper	6x2, 4x3	15	15	Poor	Remove	Prohibited species		
A1	Ficus aurea	Strangler Fig	11, 14	30	25	Poor	Remain	Neighbor's tree. Against slab.		
A2	Bischofia javonica	Bischofia	4x4, 3	18	15	Poor	Remain	Neighbor's tree. Against slab.		
A3	Persea americana	Avocado	6, 10	18	25	Fair	Remain	Neighbor's tree. Against slab.		
A4	Ficus benjamina	Weeping Ficus	1, 4, 6	18	16	Poor	Remain	Neighbor's tree. Against slab.		
Total Removed:									20	9



- NOTE:**
- TREE PROTECTION FENCE (TFF) SHALL BE INSTALLED PRIOR TO ANY SITE WORK, CLEARING, OR DEMOLITION.
  - TFF SHALL BE MAINTAINED THROUGHOUT CONSTRUCTION.
  - REMOVE TFF ONLY WITH WRITTEN APPROVAL FROM CITY URBAN FORESTER AFTER ALL SITE WORK HAS BEEN COMPLETED.
  - NO CONSTRUCTION ACTIVITIES PERMITTED WITHIN TFF WITHOUT URBAN FORESTER APPROVAL.

Plantlist				
TREES & PALMS				
QTY	KEY	BOTANICAL NAME	COMMON NAME	DESCRIPTION
4	CD	Coccoloba diversifolia	Pigeon Plum	12' ht, 2" dbh
2	CS	Conocarpus erectus 'sericeus'	Silver Buttonwood	12' ht, 2" dbh
2	MF	Myrcianthes fragrans	Simpson's Stopper	12'-14' ht, 2" dbh
7	SP	Sabal palmetto	Sabal Palm	14'-24' oa ht
3	THR	Thrinax radiata	Thatch Palm	6'-10' oa ht
SHRUBS & GROUNDCOVERS				
QTY	KEY	BOTANICAL NAME	COMMON NAME	DESCRIPTION
2	ALO	Alocantarea odorata	Odorata Bromeliad	7 gal
90	ARG	Arachis glabrata	Perennial Peanut	1 gal/roll
56	CAC	Capparis cynophallophora	Jamaican Caper	3 gal, 24" ht
17	CAC1	Capparis cynophallophora	Jamaican Caper	15 gal, 6' ht
15	MOD	Monestera deliciosa	Swiss Cheese Plant	7 gal
91	NEE	Nephrolepis exaltata	Boston Fern	3 gal
36	PHB	Philodendron 'burle marx'	Burle Marx	3 gal
25	POP	Podocarpus 'pringles'	Pingles	3 gal

TREE MITIGATION CHART	
Existing Tree Mitigation:	Req.
Tree Mitigation required for proposed removals	11"
Mitigation trees required - Tree removal	4
Mitigation trees required - Palm removal	2
Total Mitigation required - Trees at 12' ht, 2" dbh	6
Proposed Tree Mitigation:	Prov
Trees at 12' ht, 2" dbh = 8	8
Trees at 16' ht, 4" dbh = 0	0
Equivalent to 12' ht, 2" dbh = (0)	0
Total Mitigation Provided - 12' ht, 2" dbh	8
Total Shortfall of Trees 12' ht, 2" dbh	0

CITY OF MIAMI BEACH  
LANDSCAPE LEGEND

INFORMATION REQUIRED TO BE PERMANENTLY AFFIXED TO PLANS  
Zoning District: RM-1 Lot Area 7,000 S.F. Acres 0.160

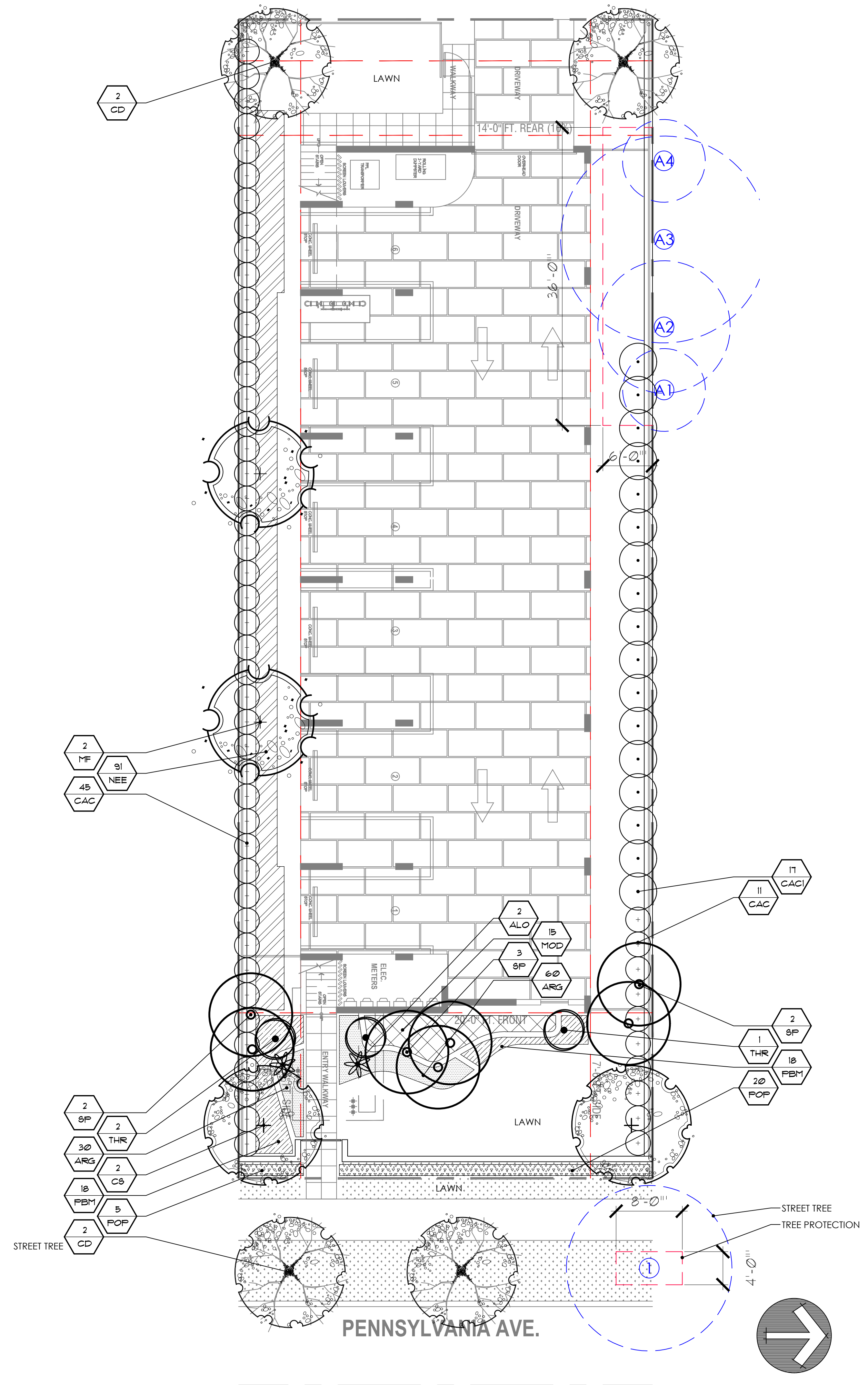
OPEN SPACE	REQUIRED/ ALLOWED	PROVIDED
A. Square feet of required Open Space as indicated on site plan: Lot Area = 7,000 s.f. x 30 % = 2,100 s.f.	2,100	3,337
B. Square feet of parking lot open space required as indicated on site Number of parking spaces _____ x 10 s.f. parking space =	N/A	N/A
C. Total square feet of landscaped open space required: A+B=	2,100	3,337

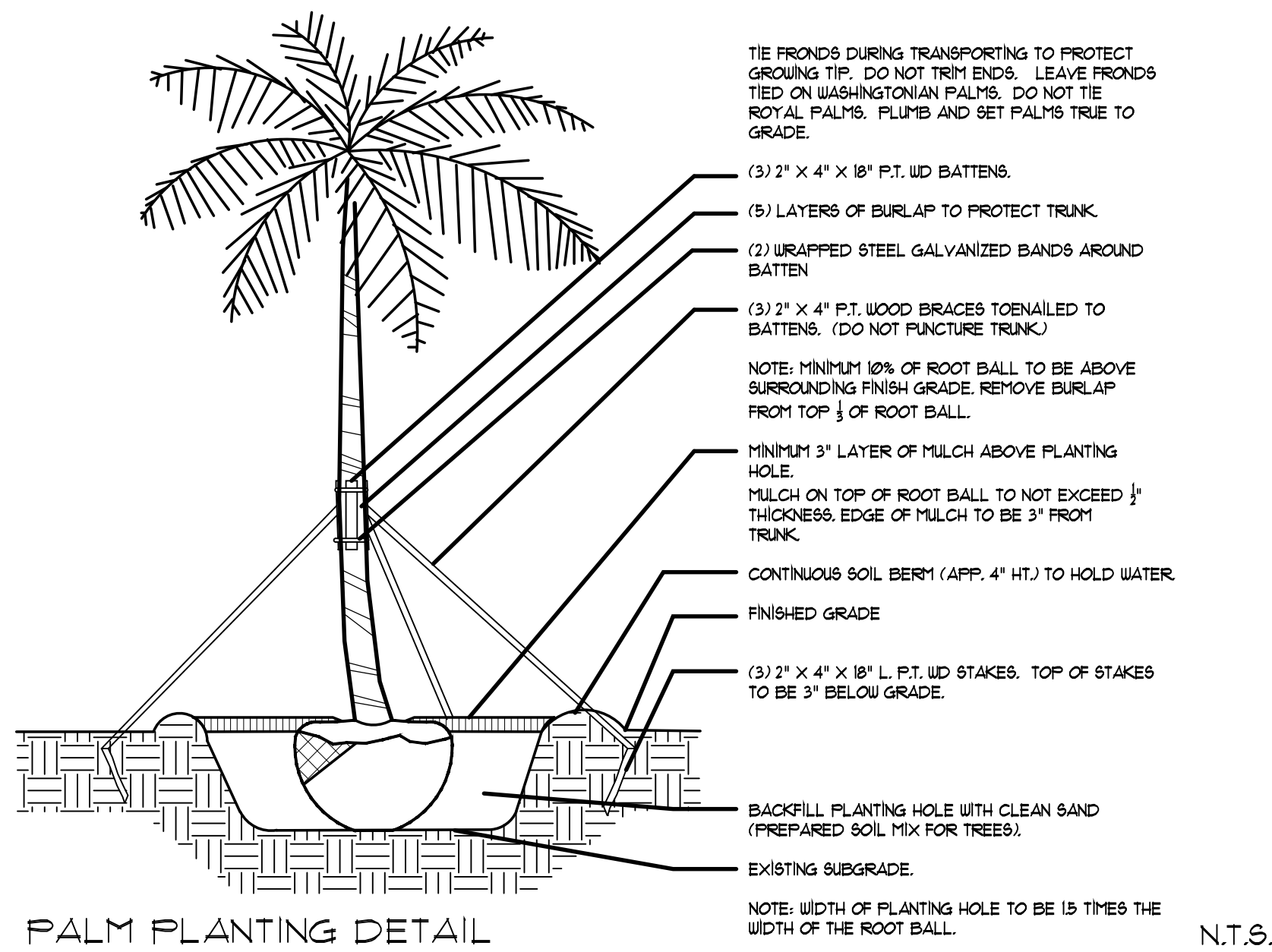
LAWN AREA CALCULATION	REQUIRED/ ALLOWED	PROVIDED
A. Square feet of landscaped open space required	2,100	3337
B. Maximum lawn area (sod) permitted= 30% x 3337 s.f.	1,001	

TREES	REQUIRED/ ALLOWED	PROVIDED
A. Number of trees required per lot or net lot acre, less existing number of trees meeting minimum requirements= _____ trees x _____ net lot acres - number of existing trees=	5	6
B. % Natives required: Number of trees provided x 30% =	2	6
C. % Low maintenance / drought and salt tolerant required: Number of trees provided x 50% =	3	6
D. Street Trees (maximum average spacing of 20' o.c.) _____ linear feet along street divided by 20' =	3	3
E. Street tree species allowed directly beneath power lines: (maximum average spacing of 20' o.c.): _____ linear feet along street divided by 20' =	N/A	N/A

SHRUBS	REQUIRED/ ALLOWED	PROVIDED
A. Number of shrubs required: Sum of lot and street trees required x 12=	96	223
B. % Native shrubs required: Number of shrubs provided x 50% =	112	164

LARGE SHRUBS OR SMALL TREES	REQUIRED/ ALLOWED	PROVIDED
A. Number of large shrubs or small trees required: Number of required shrubs x 10% =	10	17
B. % Native large shrubs or small trees required: Number of large shrubs or small trees provided x 50% =	9	17

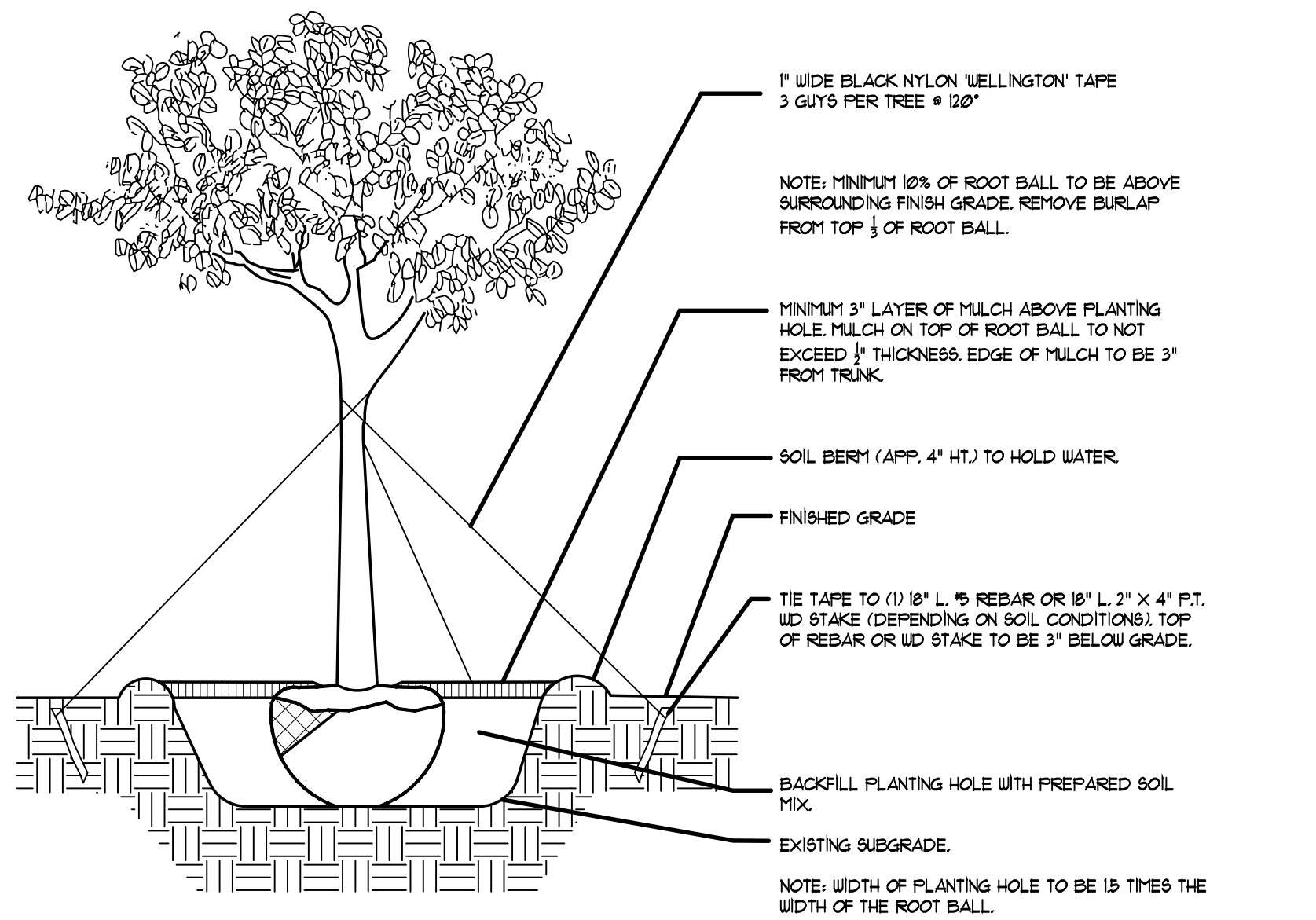




PALM PLANTING DETAIL

N.T.S.

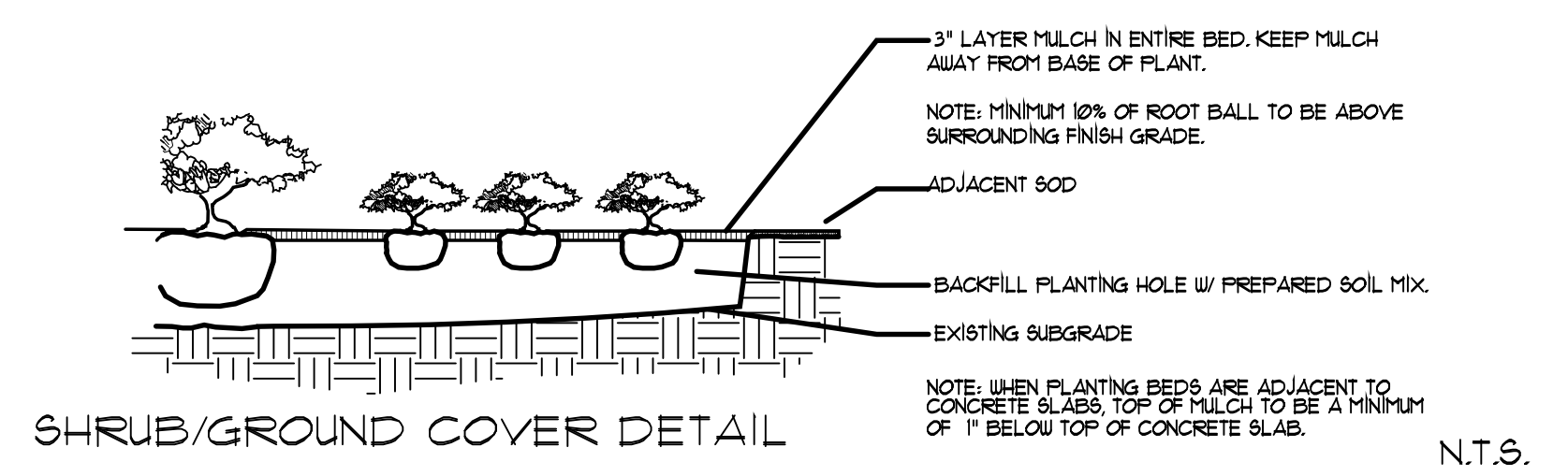
LARGE TREE PLANTING DETAIL SIMILAR



TREE PLANTING DETAIL

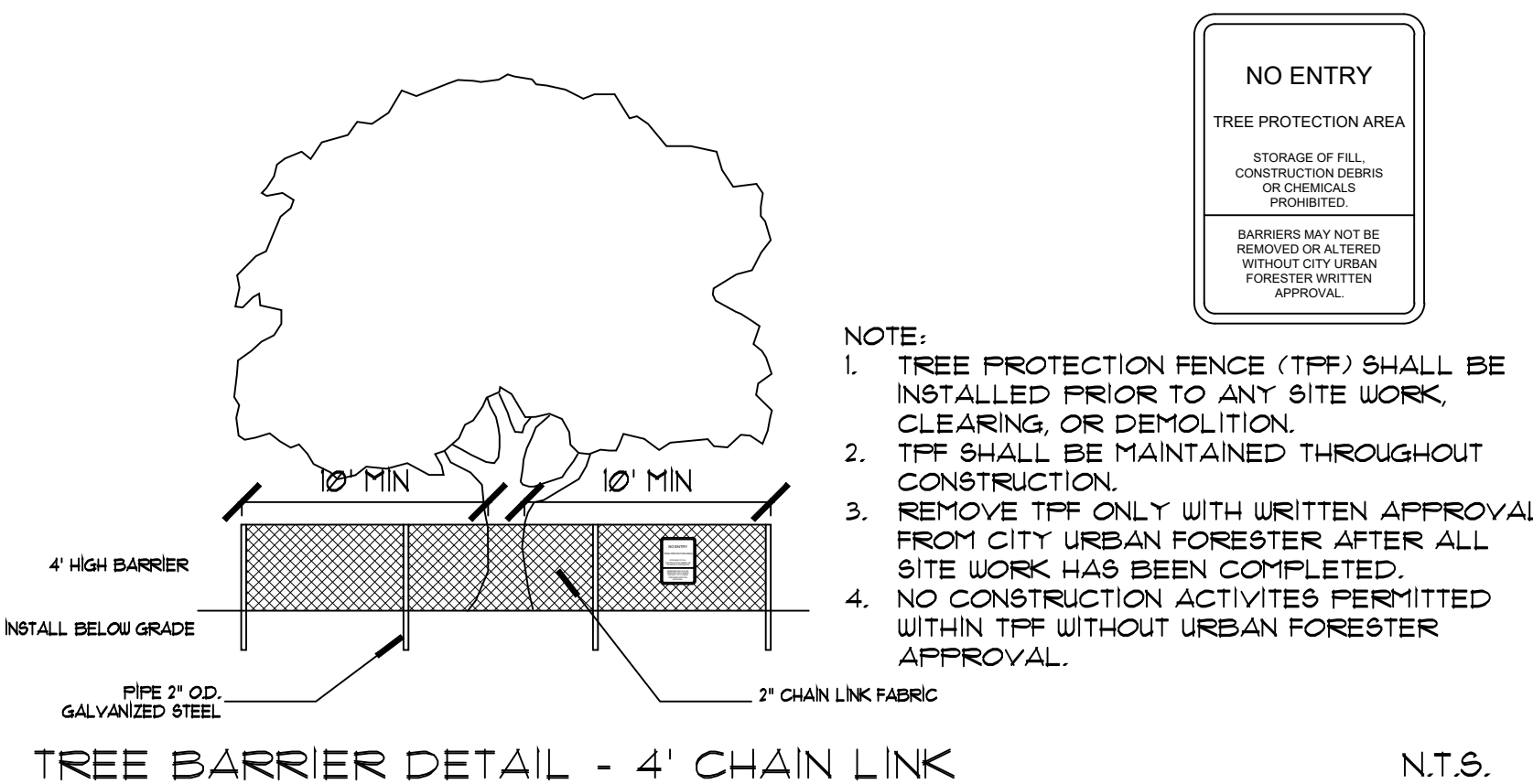
N.T.S.

TREES WITH 3\"/>



SHRUB/GROUND COVER DETAIL

N.T.S.



TREE BARRIER DETAIL - 4\"/>

N.T.S.

ROOT PRUNING SPECIFICATIONS

ALL TREES AND PALMS TO BE RELOCATED MUST BE WATERED DAILY FOR AT LEAST 2-3 DAYS PRIOR TO ANY ROOTS BEING CUT TO ENSURE THAT THEY ARE FULLY HYDRATED. EACH WATERING MUST THOROUGHLY SATURATE THE ROOTBALL TO ITS FULL DEPTH.

EACH TREE AND PALM MUST THEN BE WATERED EVERY OTHER DAY, NOT RELYING ON RAIN, DURING THE ENTIRE ROOT PRUNING PROCESS EITHER BY A TEMPORARY IRRIGATION SYSTEM OR BY HAND. EACH WATERING MUST THOROUGHLY SATURATE THE ROOTBALL TO ITS FULL DEPTH.

TREE AND PALM RELOCATION ACTIVITIES MUST BE SCHEDULED SO THAT REMOVAL AND REPLANTING TAKE PLACE IN THE SAME 24 HOUR PERIOD.

ALL DIGGING IN THE ROOT ZONE DURING THE ROOT PRUNE PROCESS MUST BE DONE BY HAND. PRUNING OF ROOTS MUST BE DONE BY HAND WITH CLEAN, SHARP TOOLS. MACHINERY COULD BE USED ON LARGER TREES AS LONG AS ROOTS ARE FINALIZED BY HAND PRUNING. DO NOT PAINT ROOTS WITH PAINT OR ANY KIND OF SEALANT.

MYCORRHIZA (ROOTS TRANSPLANT OR EQUIVALENT) MUST BE INCORPORATED INTO THE BACKFILL SOIL PRIOR TO BACKFILLING AS PER MANUFACTURERS RECOMMENDATIONS.

AFTER EACH ROOT PRUNE, EACH SECTION OF ROOTBALL THAT IS PRUNED MUST BE UNRAPPED WITH A BLACK PLASTIC AND THE TRENCH BACKFILLED WITH ORIGINAL EXCAVATED SOIL. A TREE RING WITH A MINIMUM HEIGHT OF 6\"/>

ONCE THE TREE RING IS CONSTRUCTED AFTER EACH ROOT PRUNE, A HIGH-PHOSPHORUS ROOT STIMULANT MUST BE LIBERALLY APPLIED TO THE SURFACE OF THE ROOTBALL AND THOROUGHLY WATERED IN TO ENCOURAGE NEW ROOT GROWTH.

PRIOR TO ANY ROOTS BEING CUT, ALL MAJOR ROOTS MUST BE IDENTIFIED TO DETERMINE THE ROOTBALL DIAMETER BASED ON THE RELATIVE LOCATION AND SIZE OF THE ROOTS.

MINIMUM ROOTBALL DIAMETER CALCULATION BASED ON A FACTOR OF 10 OR ALLOWING A MINIMUM OF 9\"/>

MINIMUM ROOTBALL DEPTH MUST BE 24\"/>

AS A GENERAL RULE, MINIMUM ROOT PRUNE TIME FOR TREES WITH A DBH OF LESS THAN 10\"/>

AS A GENERAL RULE, MINIMUM ROOT PRUNE TIME FOR TREES WITH A DBH OF 10\"/>

MAINTENANCE SPECIFICATIONS

ALL NEW AND RELOCATED TREES AND PALMS MUST BE MAINTAINED FOR ONE YEAR FROM THE DATE OF RELOCATION TO THEIR FINAL LOCATIONS.

WHENEVER POSSIBLE, EACH TREE AND PALM MUST BE WATERED BY A PERMANENT AUTOMATIC IRRIGATION SYSTEM FOLLOWING RELOCATION. EACH WATERING MUST THOROUGHLY SATURATE THE ROOTBALL TO ITS FULL DEPTH. THIS WOULD REQUIRE 25-50 GALLONS OF WATER FOR SMALL TREES AND PALMS, DEPENDING ON ROOTBALL SIZE, WHILE LARGE TREES WILL REQUIRE A MINIMUM OF 10 GALLONS PER FOOT OF ROOTBALL DIAMETER. WATERING FREQUENCY MUST BE EVERYDAY FOR THE FIRST TWO WEEKS, EVERY OTHER DAY FOR THE NEXT THREE WEEKS, AND EVERY THIRD DAY FOR THE NEXT 6-8 WEEKS.

WHEN AN AUTOMATIC IRRIGATION SYSTEM IS NOT POSSIBLE, CONTRACTOR IS RESPONSIBLE FOR HAND WATERING RELOCATED TREES AND PALMS THROUGHLY THE MAINTENANCE PERIOD AND UNTIL FINAL ACCEPTANCE BY THE LANDSCAPE ARCHITECT AND/OR CLIENT.

IMMEDIATELY AFTER RELOCATION TO THE FINAL LOCATION, A HIGH-PHOSPHORUS ROOT STIMULANT MUST BE APPLIED TO THE SURFACE OF THE ROOTBALL AT THE RECOMMENDED LABEL RATE AND WATERED IN WITH A DRENCH CONSISTING OF A SYSTEMIC INSECTICIDE AND A BROAD-SPECTRUM SYSTEMIC FUNGICIDE, FOLLOWING LABEL INSTRUCTIONS, AS INITIAL PREVENTATIVE MAINTENANCE.

EVERY THREE MONTHS THEREAFTER, A HIGH-PHOSPHORUS ROOT STIMULANT MUST BE APPLIED TO THE SURFACE OF THE ROOTBALL AT THE RECOMMENDED LABEL RATE AND WATERED IN WITH A DRENCH CONSISTING OF A SYSTEMIC INSECTICIDE AND A BROAD-SPECTRUM SYSTEMIC FUNGICIDE, FOLLOWING LABEL INSTRUCTIONS, AS CONTINUING PREVENTATIVE MAINTENANCE.

IRRIGATION AND BRACING MUST BE CHECKED AND EACH TREE OR PALM THOROUGHLY INSPECTED FOR SIGNS OF STRESS, DISEASE, OR PEST PROBLEMS ON A MONTHLY BASIS.

SHADE TREES

IMMEDIATELY AFTER RELOCATION TO THE FINAL LOCATION AND EVERY THREE MONTHS THEREAFTER, A HIGH-QUALITY, SLOW-RELEASE 15-2-15 GRANULAR FERTILIZER MUST BE APPLIED, AT THE RECOMMENDED LABEL RATE, SPREAD EVENLY ACROSS THE SURFACE OF THE ROOTBALL.

FOLIAR FEED FOUR TIMES PER YEAR.

FLOWERING TREES

IMMEDIATELY AFTER RELOCATION TO THE FINAL LOCATION AND EVERY THREE MONTHS THEREAFTER, A HIGH-QUALITY, SLOW RELEASE 5-10-15 GRANULAR FERTILIZER MUST BE APPLIED, AT THE RECOMMENDED LABEL RATE, SPREAD EVENLY ACROSS THE SURFACE OF THE ROOTBALL.

FOLIAR FEED FOUR TIMES PER YEAR.

PALMS

STRING MUST BE REMOVED FROM THE TIED UP LEAVES IMMEDIATELY AFTER RELOCATION TO THE FINAL LOCATION IF THE PALM WAS ROOT PRUNED OR WITHIN 30-45 DAYS AFTER RELOCATION ON THE OCCASION THE LANDSCAPE ARCHITECT APPROVED RELOCATION WITHOUT ROOT PRUNING DUE TO TIME CONSTRAINTS.

IMMEDIATELY AFTER RELOCATION TO THE FINAL LOCATION AND EVERY THREE MONTHS THEREAFTER, A HIGH-QUALITY, SLOW RELEASE 8-14-12 GRANULAR FERTILIZER MUST BE APPLIED, AT THE RECOMMENDED LABEL RATE, SPREAD EVENLY ACROSS THE SURFACE OF THE ROOTBALL.

FOLIAR FEED SIX TIMES PER YEAR.

PLANT NOTES

1. ALL PLANT MATERIAL TO BE FLORIDA NO. 1 OR BETTER FLORIDA DEPARTMENT OF AGRICULTURE GRADES AND STANDARDS: PARTS I AND II, 2ND EDITION, FEBRUARY 1998, RESPECTIVELY.

2. ALL PLANTING BEDS TO BE TOPPED WITH 3\"/>

3. ALL TREES TO BE STAKED IN A GOOD WORKMANLIKE MANNER, NO NAIL STAKING IN TRUNKS PERMITTED.

4. LANDSCAPE PLAN SHALL BE INSTALLED IN COMPLIANCE WITH ALL LOCAL CODES.

5. ALL SOD SHALL BE ZOYSIA JAPONICA SOLID SOD, (UNLESS OTHERWISE NOTED) AND LAID WITH ALTERNATING AND ABUTTING JOINTS.

6. ALL PLANTING BEDS TO BE WEED AND GRASS FREE.

7. LANDSCAPE CONTRACTOR SHALL REVIEW ALL DRAWINGS AND PREPARE OWN QUANTITY COUNTS PRIOR TO BID COST AND COMPARE TO ARCHITECT'S PLANT LIST. LANDSCAPE CONTRACTOR IS RESPONSIBLE FOR ATTAINING ACCURATE COUNT OF PLANT MATERIALS SPECIFIED. IN THE EVENT OF DISCREPANCIES, LANDSCAPE CONTRACTORS SHALL BRING TO THE ATTENTION OF LANDSCAPE ARCHITECT. PLAN SHALL TAKE PRECEDENCE OVER PLANT LIST.

8. LANDSCAPE CONTRACTOR SHALL LOCATE AND VERIFY ALL UNDERGROUND UTILITIES PRIOR TO DIGGING.

9. NO CHANGES SHALL BE MADE WITHOUT THE PRIOR CONSENT OF THE LANDSCAPE ARCHITECT.

10. ALL PLANTED AREAS TO RECEIVE 100% COVERAGE BY AN AUTOMATIC IRRIGATION SYSTEM, WITH A MINIMUM OF 50% OVERLAP. RAIN SENSOR TO BE PROVIDED.

REVISIONS
1/30/25 SITE PLAN

DRAWN BY DV
DATE 3/8/24
SCALE 1/8"=1'-0"
DRAWING TITLE LANDSCAPE PLAN
SHEET L202