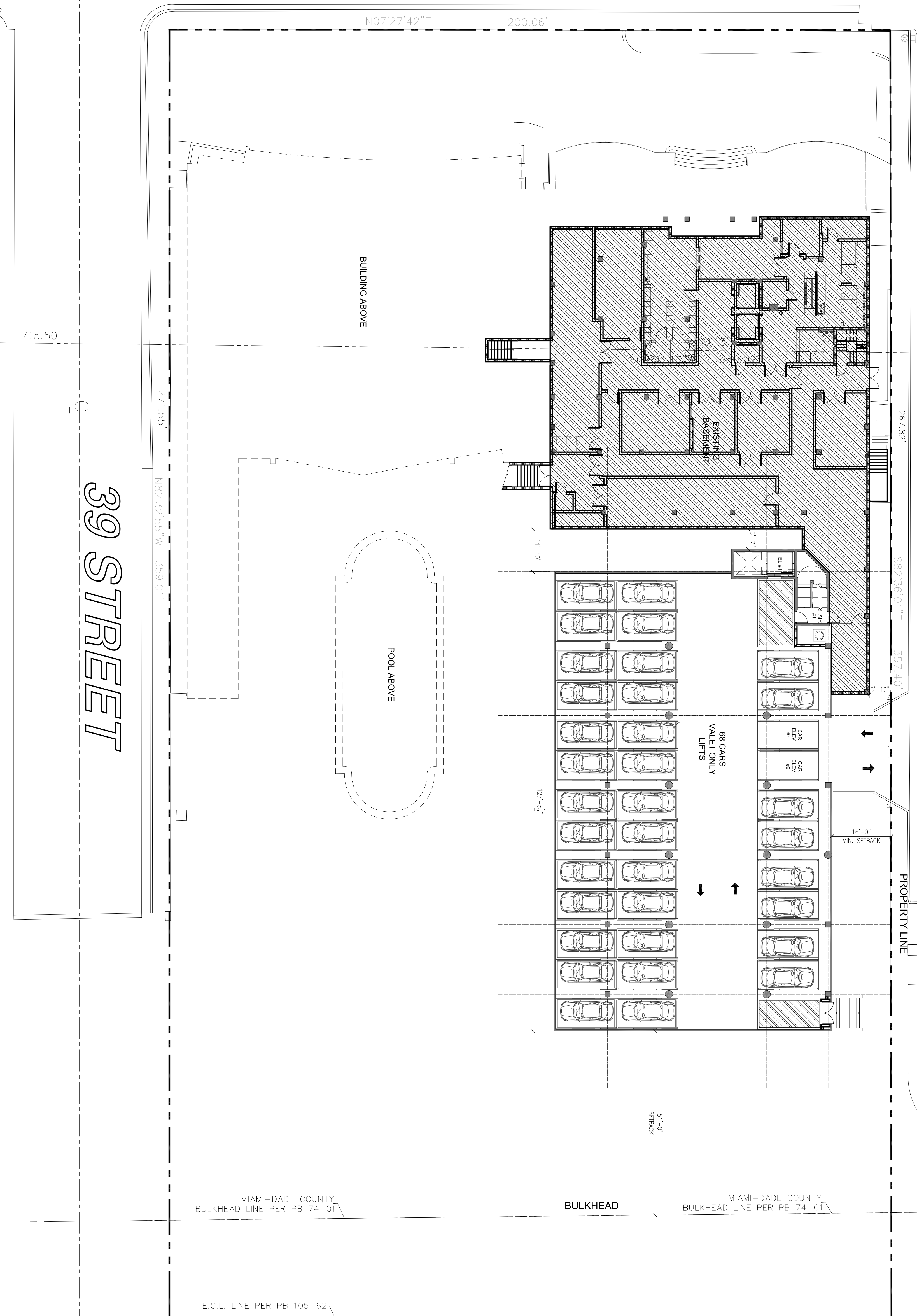


COLLINS AVENUE (S.R. A1A)

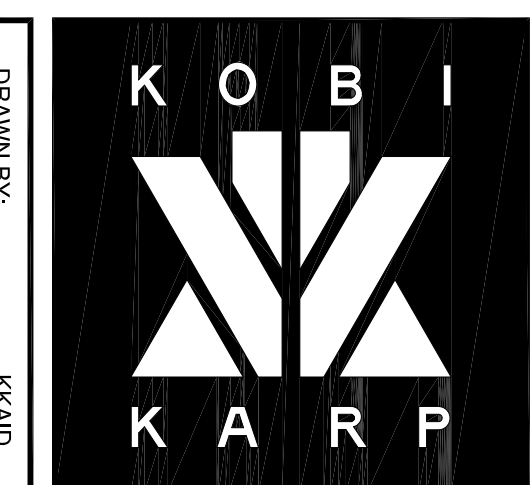
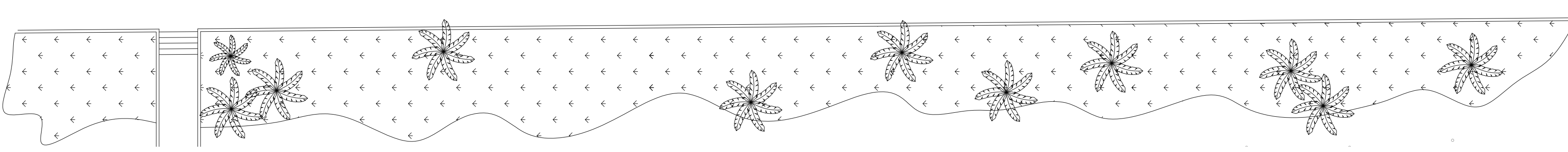
39 STREET

40 STREET



PROPOSED SITE PLAN

1/32" = 1'-0"



ARCHITECTURE
INTERIOR DESIGN
PLANNING

AIA ASID NCARB

2915 Biscayne Boulevard
Suite 200
Miami, Florida 33137
O: 305.573.1818
F: 305.573.3766

WWW.KOBIKARP.COM

Lic. # AR0012578



CADILLAC HOTEL ADDITION
3925 COLLINS AVENUE
MIAMI BEACH, FLORIDA 33141

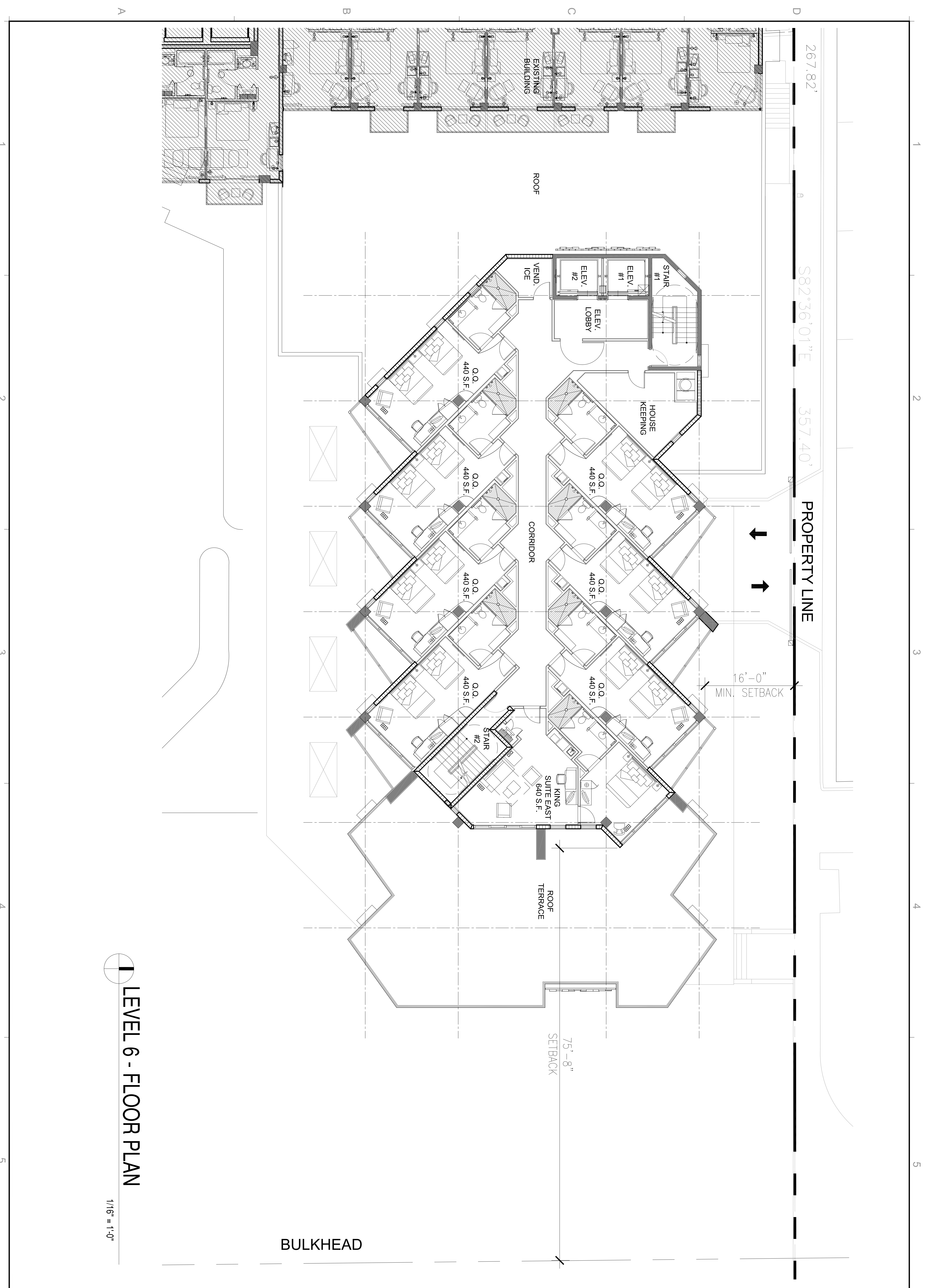
PROPOSED SITE PLAN
BASEMENT LEVEL

1010

REVISIONS / SUBMISSIONS
1
2
3
4
5
6
7
8
9
10
11
12
13
14

A-100.2

DRAWN BY: KKAD
CHECKED BY: KKAD
DATE: 8/20/10



LEVEL 6 - FLOOR PLAN

1/16" = 1'-0"

BULKHEAD

PROPERTY LINE

16'-0" MIN. SETBACK

75'-8" SETBACK

REVISIONS / SUBMISSIONS	
1	
2	
3	
4	
5	
6	
7	
8	
9	
10	
11	
12	

1010

ALL DIMENSIONS UNLESS OTHERWISE SPECIFIED ARE IN FEET AND INCHES. DIMENSIONS TO FACE UNLESS OTHERWISE SPECIFIED. DIMENSIONS TO CENTERLINE UNLESS OTHERWISE SPECIFIED. DIMENSIONS TO CENTERLINE UNLESS OTHERWISE SPECIFIED. DIMENSIONS TO CENTERLINE UNLESS OTHERWISE SPECIFIED. DIMENSIONS TO CENTERLINE UNLESS OTHERWISE SPECIFIED.

CADILLAC HOTEL ADDITION
 3925 COLLINS AVENUE
 MIAMI BEACH, FLORIDA 33141

LEVEL 6
 FLOOR PLAN



Lic. # AR0012578

ARCHITECTURE
 INTERIOR DESIGN
 PLANNING

AIA ASID NCARB

2915 Biscayne Boulevard
 Suite 200
 Miami, Florida 33137
 O: 305.573.1818
 F: 305.573.3766

WWW.KOBIKARP.COM



DRAWN BY: KKAD
 CHECKED BY: KKAD
 DATE: 8/20/10

A-104

1 2 3 4 5

D

C

B

A



REVISIONS / SUBMISSIONS	
1	
2	
3	
4	
5	
6	
7	
8	
9	
10	
11	
12	

1010
ALL DRAWINGS AND WRITTEN MATERIAL APPEARING HEREIN
 CONSTITUTE THE ORIGINAL AND UNPUBLISHED WORK OF
 KOBKARP AND MAY NOT BE DUPLICATED, USED, OR DISCLOSED
 WITHOUT THE EXPRESS WRITTEN CONSENT OF KOBKARP
 ARCHITECTURE & INTERIOR DESIGN, INC. AIA, 8/10/2010

CADILLAC HOTEL ADDITION
 3925 COLLINS AVENUE
 MIAMI BEACH, FLORIDA 33141

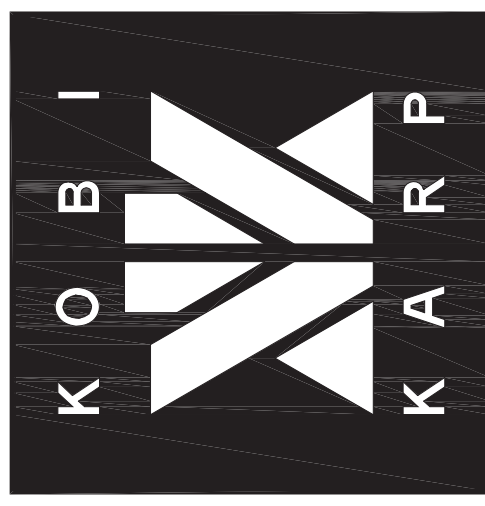
SOUTH ELEVATION



Lic. # AR0012578

ARCHITECTURE
 INTERIOR DESIGN
 PLANNING

AIA ASID NCARB
 2915 E. Las Olas Boulevard
 Suite 200
 Miami, Florida 33137
 C: 305.573.8118
 F: 305.573.3766
 WWW.KOBKARP.COM



DRAWN BY: KKAID
 CHECKED BY: KKAID
 DATE: 8/2010

A-201

SOUTH ELEVATION

N.T.S

1 2 3 4 5

1

2

3

4

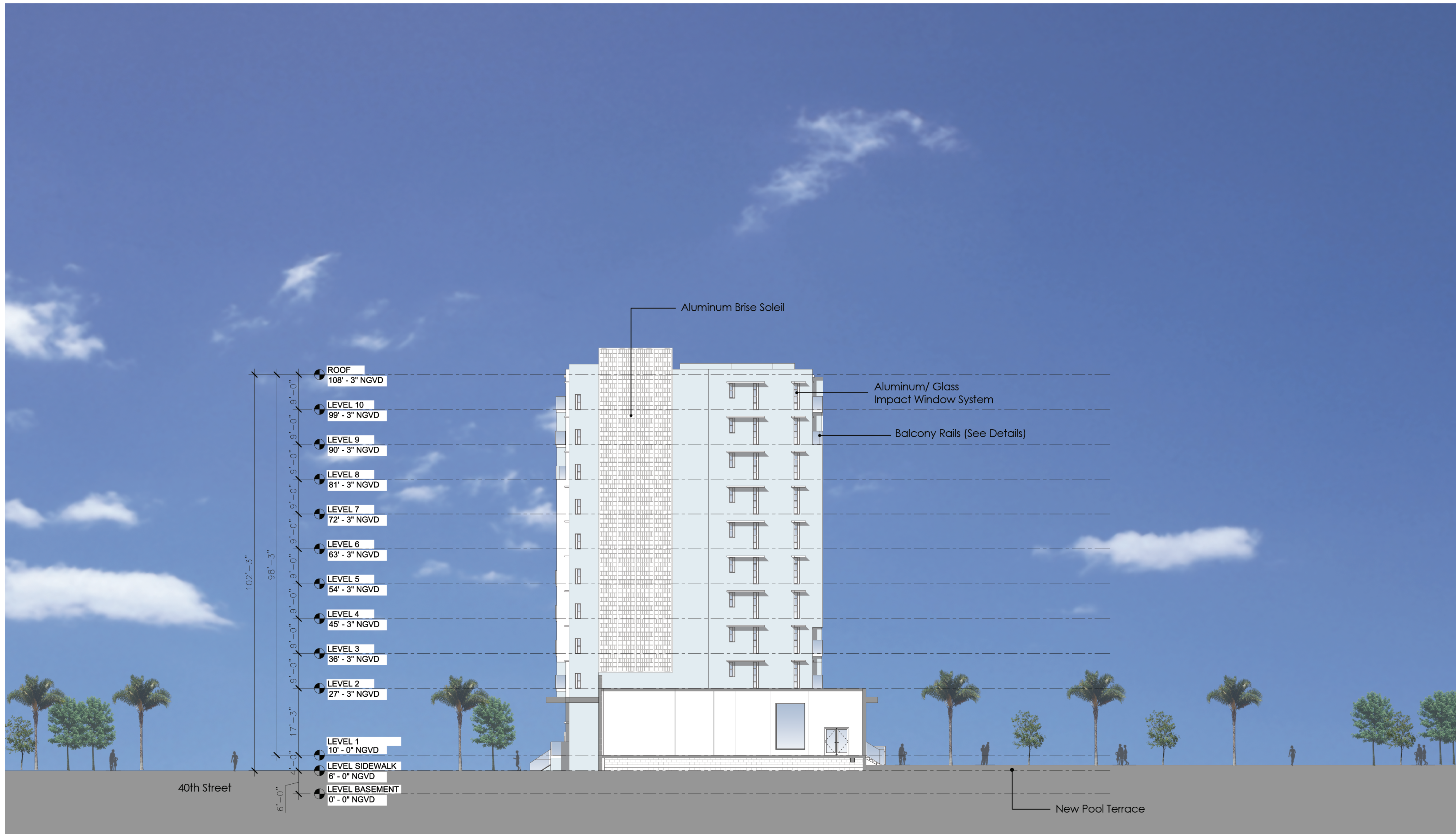
5

D

C

B

A



REVISIONS / SUBMISSIONS	
1	
2	
3	
4	
5	
6	
7	
8	
9	
10	
11	
12	

1010

ALL DRAWINGS AND WRITTEN MATERIAL APPEARING HEREIN
 CONSTITUTE THE ORIGINAL AND UNPUBLISHED WORK OF
 KOBKARP AND MAY NOT BE DUPLICATED, USED, OR REPRODUCED
 WITHOUT THE EXPRESS WRITTEN CONSENT OF KOBKARP
 ARCHITECTURE & INTERIOR DESIGN, INC. AIA, AIA 191-0002

CADILLAC HOTEL ADDITION
 3925 COLLINS AVENUE
 MIAMI BEACH, FLORIDA 33141

WEST ELEVATION

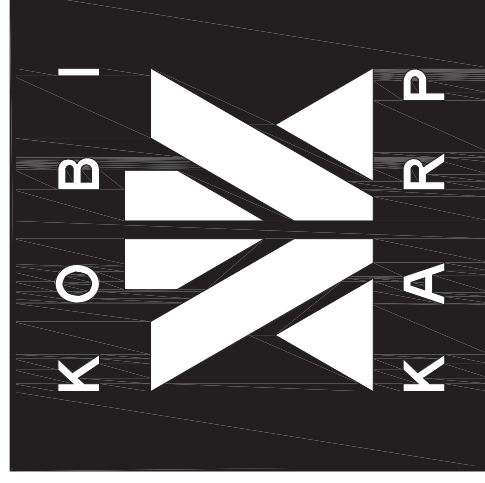


Lic. # AR0012578

ARCHITECTURE
 INTERIOR DESIGN
 PLANNING

AIA ASID NCARB

2915 E. Halland Boulevard
 Suite 200
 Miami, Florida 33137
 C: 305.573.8118
 F: 305.573.3766
 WWW.KOBKARP.COM



DRAWN BY: KKAIID
 CHECKED BY: KKAIID
 DATE: 8/2010

A-203

WEST ELEVATION / SECTION
 N.T.S.

1

2

3

4

5