

09/18/2008 09:29 9545649278

AMM. John

PAGE 01/04

ES-919

For Health Hazard Applications

Job Name _____	Contractor _____
Job Location _____	Approval _____
Engineer _____	Contractor's P.O. No. _____
Approval _____	Representative _____

Series 919 Reduced Pressure Zone Assemblies

Sizes 1/2" - 2" (20 - 60mm)

Series 919 Reduced Pressure Zone Backflow Assemblies are designed to protect potable water supplies in accordance with national plumbing codes and water authority requirements. This series can be used in a variety of installations, including the prevention of health related cross-connections or for control of backflow at the service line entrance.

This valve features two poppet style check valves, replaceable check seats, with an intermediate relief valve. Its compact modular design facilitates easy maintenance and assembly access. Sizes 1/2" - 1" (20 - 25mm) structures have top handles.

Features

- Separate access covers for the check valves and relief valve for ease of maintenance
- Top entry-of check signals easily accessible
- All rubber customers of chloramine resistant material
- Check valve poppet assemblies are fully guided by innovative plastic seat guide
- Replaceable push-in check valve and relief valve seats eliminate threads from the water way
- EZ test relief valve cover quarter-turn locking joint captures the spring load during repair to facilitate disassembly
- Innovative check valve plastic cover bushing provides trouble free guiding of the check valve poppet
- Bottom mounted relief valve provides reduced installation clearance
- Compact, space saving design
- No special tools required for servicing
- Top mounted test cocks for ease in testing and reduced installation clearance
- Standardly furnished with NPT body connections



Specifications

A Reduced Pressure Zone Assembly shall be installed at each potential health hazard location to prevent backflow due to back-siphonage and/or backpressure. The assembly shall consist of a pressure differential relief valve located in a zone between two positive acting check valves. Seats and seat discs shall be replaceable in both check valves and the relief valve without the use of special tools. Service of all internal check valve components shall be through top mounted access covers threaded to the main valve body. The check valve poppet assembly shall be guided via the use of a corrosion resistant plastic guide. The check valve and relief valve seats shall be push-in type. The relief valve cover shall be secured with stainless steel bolts and shall utilize a quarter-turn locking joint to capture the spring load of the relief valve. The relief valve shall have an internal warning line to advise the first water supply. All rubber customers shall be of chloramine resistant material. The assembly shall also include two parallel seated isolation valves, four top-mounted threaded vent test cocks and an air gap drain fitting. The assembly shall be a Watts Regulator Company Series 919.

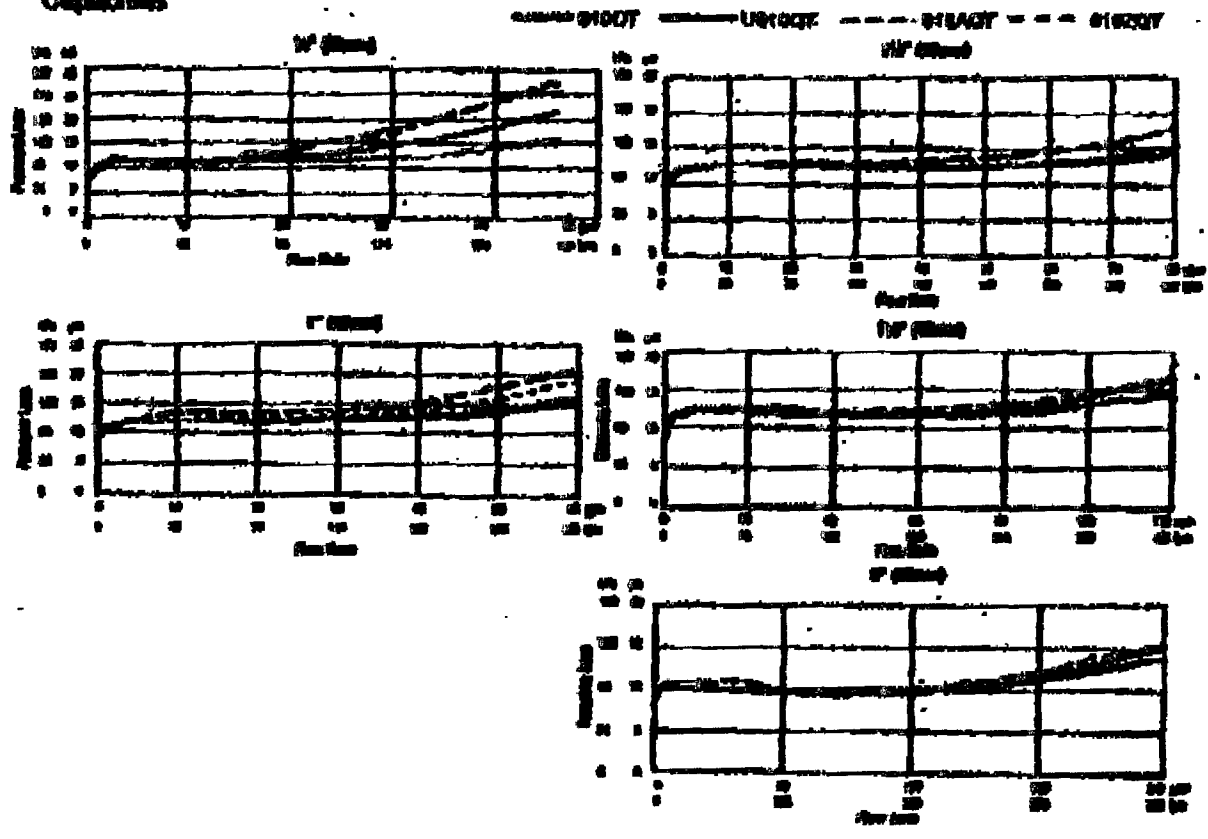
Now Available
Watts'or Insulated Enclosure
For more information, visit the website EP-WB.

WATTS'OR INSULATED ENCLOSURE
FOR LOCAL INSTALLATION REQUIREMENTS



Watts'or specifications in U.S. customary units and metric are approximate and are provided for reference only. For precise measurements, please contact Watts Technical Services. Watts reserves the right to change or modify product design, construction, specifications, or materials without prior notice and without incurring any obligation to make such changes and modifications on Watts products previously or subsequently sold.

Capacities



WATTS

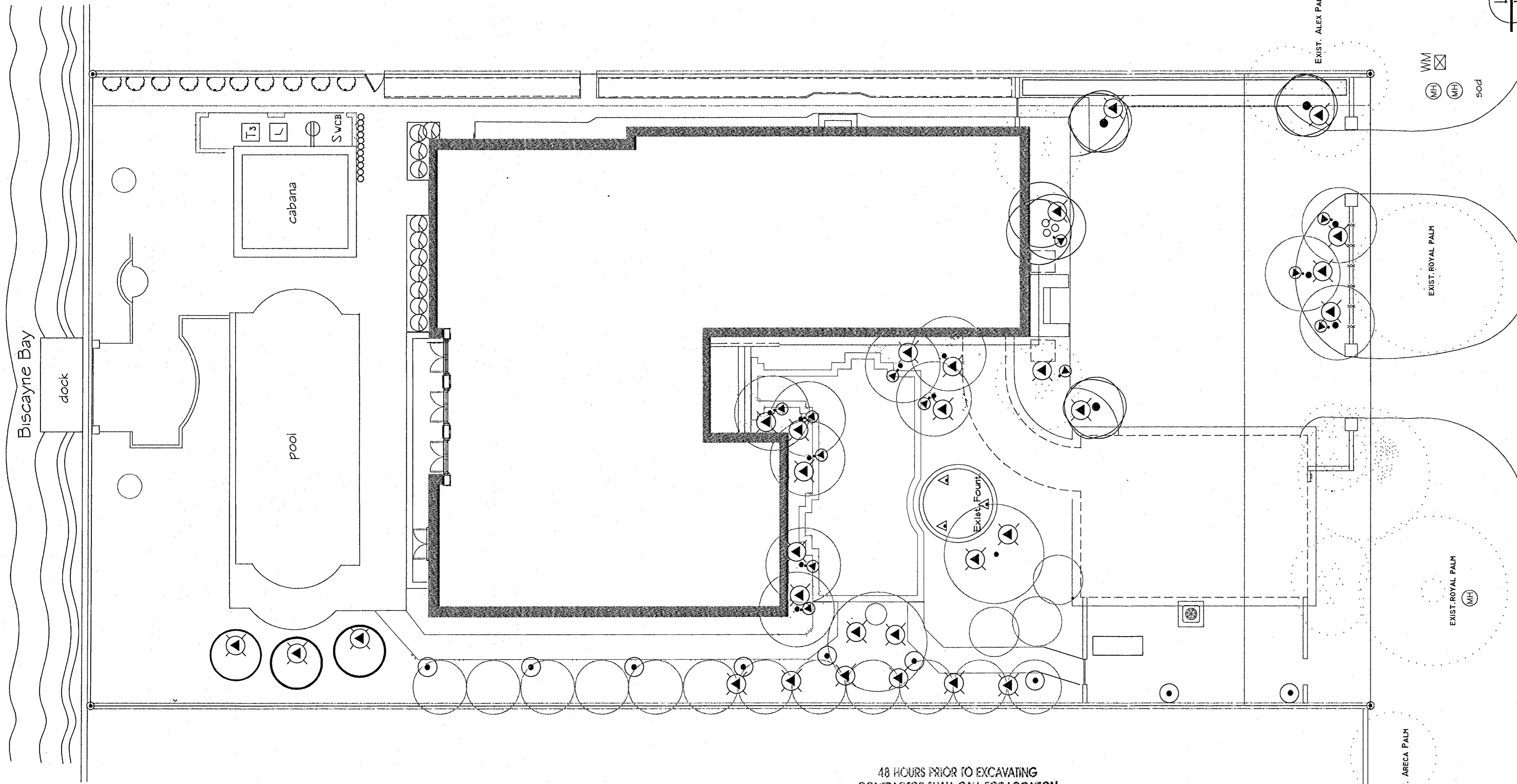
Scientific Precision Products

65-019 0749



2008 04/04/08 03:45 PM 3058698829
 03/18/2008 03:29 9548849278
 03/18/2008 03:29 9548849278
 03/18/2008 03:29 9548849278

0000



LIGHTING PLAN
SCALE 3/32" = 1"

48 HOURS PRIOR TO EXCAVATING
CONTRACTOR SHALL CALL FOR LOCATION
OF UNDERGROUND UTILITIES
SHINSHINE ONE-CALL 1-800-432-4770
CITY OF MIAMI BEACH 305-673-7080

THIS PLAN REVIEW CONSTITUTES APPROVAL FOR
OBTAINING BUILDING PERMITS ONLY.
All construction and/or use of equipment in the right-of-way and/or
easements, requires a separate Public Works Department permit prior
to start of construction.
Permit Requirements: Proof of existing sidewalk/swale area conditions
(pictures) and/or posting of sidewalk/roadway bonds
(Public Works Inspection of the right-of-way will be required prior to
final sign-off on the C.C. / C.O., or the release of bonds.)
Approved/Reviewed By: B. Duvall Date: 9/16/08

ELECTRICAL SYMBOLS

USE	SYMBOL	QTY.	DESCRIPTION
WALK LIGHT	⊙	9	PATHLIGHT Cast Bronze M-3 12volt 50V halogen w/ground spike
UPLIGHT	⊙	27	DIRECTIONALS Cast Bronze w/20'sten L-011-MA-S 12volt 50w MR-16
MOONLIGHT	⊙	12	DIRECTIONALS Cast Bronze w/20'sten L-011-MA 12volt 35w MR-16 Tree mount down Flood
FOUNTAIN LIGHT	⊙	3	SUBMERISBLE Cast Bronze 12volt 35w Wide Beam flood
TRANSFORMER	T3	4	TRANSFORMER ZZE 300 watt Stainless Steel
TIME CLOCK	L	4	TIMER Z2M 24 hour on-off Timer
BUTLET	⊙	4	GFI RECEPTACLE BUTLET
CIRCUIT BREAKER	SVCB	1	WEATHERPROOF CIRCUIT BREAKER
MOUNTING KIT	MKIT	3	MOUNTING KIT AA10 2 Unistrut Channels for Mounting transformers & timers

MOUNTED OUTSIDE OF BUILDING ON STRUTS
 T1 MKit Circuit 1 (C-1)
 T2 MKit Circuit 2 (C-2)
 T3 MKit Circuit 3 (C-3)

SYMBOL FOR PALM OR TREE TRUNK

ALL FIXTURES, TRANSFORMERS & TIMERS AVAILABLE BY:
 BEACHSIDE LIGHTING
 KAILUA, HAWAII
 800-405-6732

BO805187
 OFFICE COPY
 CITY OF MIAMI BEACH
 APPROVED FOR PERMIT BY
 THE FOLLOWING:

BUILDING: _____
 ZONING: _____
 DRB/TPB: _____
 CONCURRENCY: _____
 PLUMBING: _____
 ELECTRICAL: _____
 MECHANICAL: _____
 FIRE PREVENTION: _____
 PUBLIC WORKS: _____

SEAL:
 REVISIONS:

BF
 FLA # 1331
 8/9/08

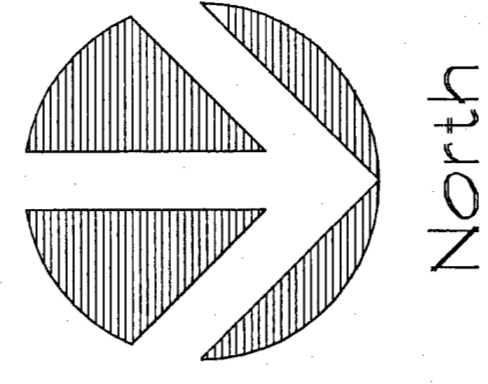
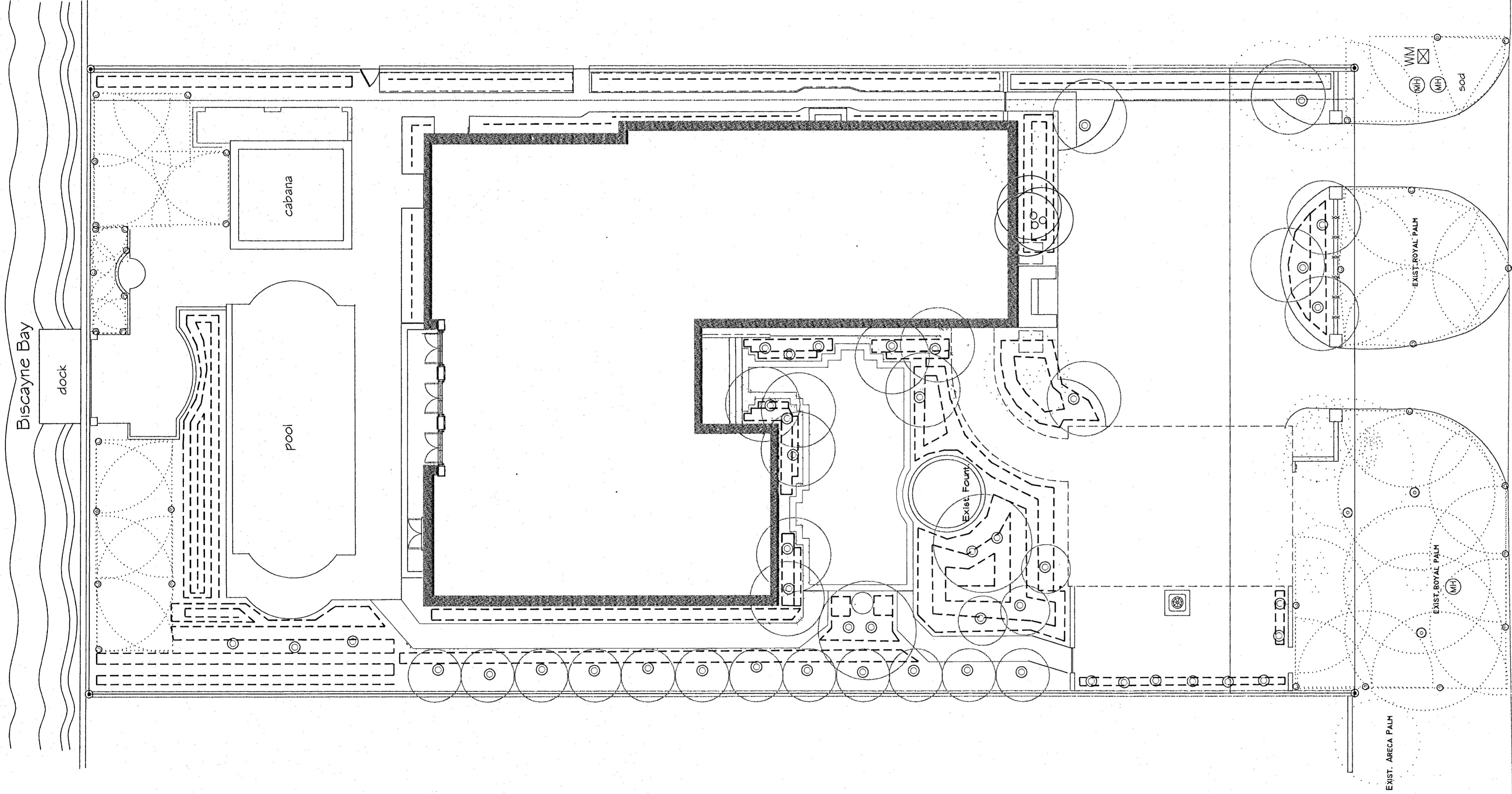
PROJECT:
 DR. M. L. PEARCE RESIDENCE
 16 LAGORCE CIRCLE
 MIAMI BEACH, FLORIDA

Scale 3/32" = 1"
 L-1 1

TITLE:
 LIGHTING
 PLAN
 DATE: 5 AUG 08
 DRAWN: RMY
 CHECKED: BF

BOB FLECK
 Landscape Architect
 6107 S Dixie Hwy #6
 W Palm Beach, FL 33406
 561-493-4190 / 493-4190

3/10/08



Materials List

QTY.	DESCRIPTION	NOTES
3	mist 1804 PRS	full circle
32	mist 1804 PRS	adj.circle
47	bubbler 1300	adjust.bubbler
field verify	1/2" pres.comp.dripline	18"oc emitter
1	backflow preventer	per city code
5	1-1/2"x1"	remote control valve in box
1	1-1/2"x1-1/2"	manual ball gate valve in box
1	automatic rain shut-off switch	
1	automatic control clock	
950 ^{LF}	1-1/2" schedule 40 pvc pipe	mainline
as needed	assorted fittings,couplings,bushings	for above
as needed	3" pvc sleeve	under drive & walks

Conny 8/20/08

IRRIGATION KEY

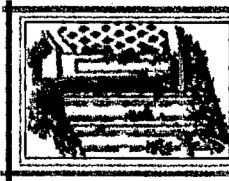
Head Location ©
Drip Line -----

IRRIGATION PLAN

SCALE: 3/32" = 1'-0"

NOTES:
 -fully automatic system to provide 100% coverage to all areas planted.
 -install automatic rain sensor shutoff connected to time clock.

BR 8/20/08



BOB FLECK
 Landscape Architect
 6107 S.Dixie Hwy #6
 W.Palm Beach, FL 33415
 561-485-4190 / 4093-4190

SEAL:
REVISIONS:

BF
 FLA # 1331
 8/16/08

PROJECT:

DR. M. L. PEARCE RESIDENCE
 16 LAGORCE CIRCLE
 MIAMI BEACH, FLORIDA

Scale: 3/32" = 1'

L-1 of 1

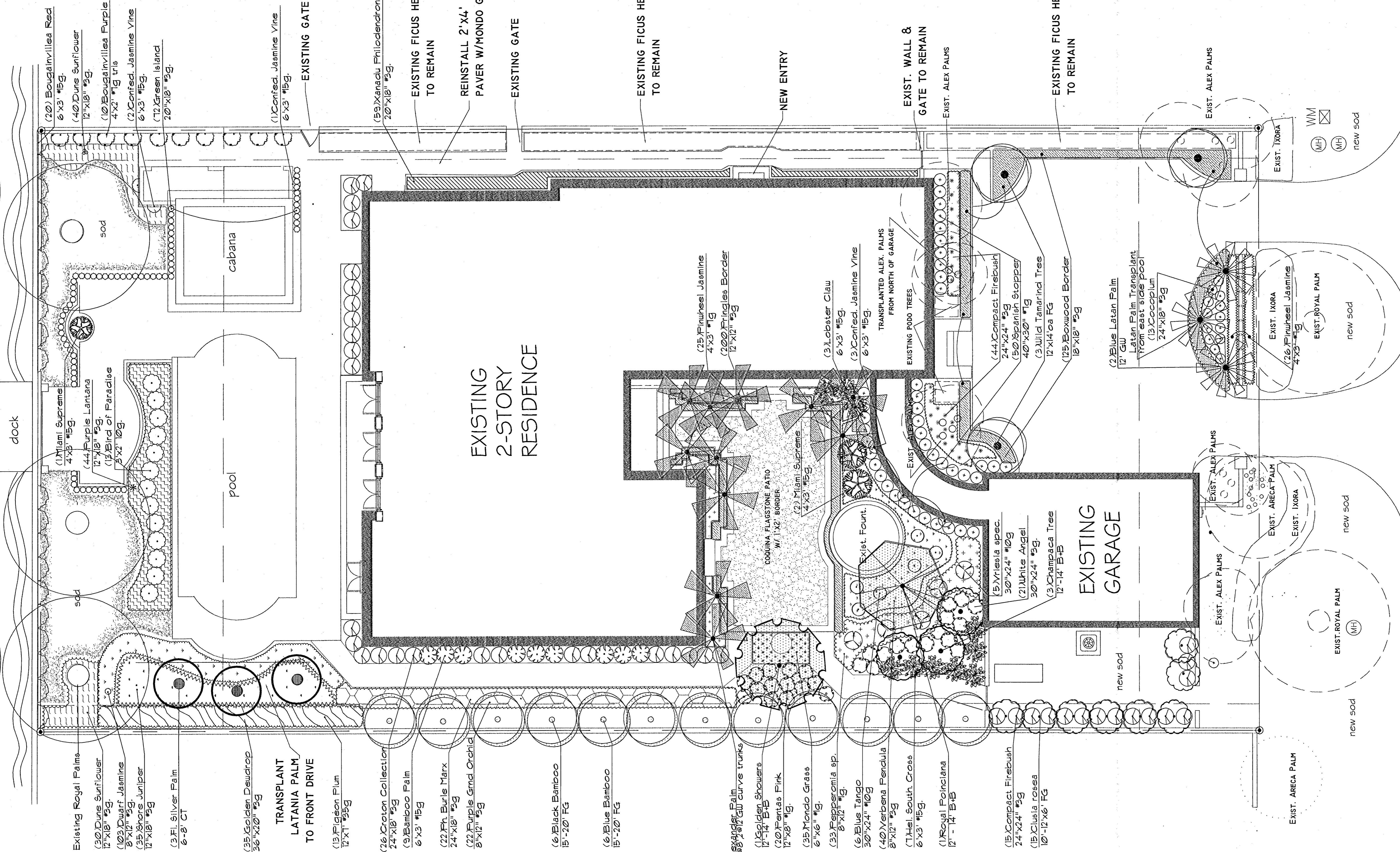
TITLE:
IRRIGATION PLAN

DATE: 5 AUG 08

DRAWN: RMY

CHECKED: BF

Biscayne Bay

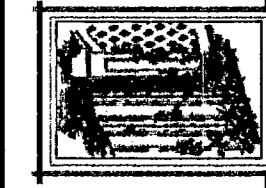


EXISTING
2-STORY
RESIDENCE

EXISTING
GARAGE

LANDSCAPE PLAN
SCALE 1/8"=1'

LAGORCE CIRCLE



BOB FLECK
Landscape Architect
6107 S. Dixie Hwy #6
Miami Beach, FL 33406
561-493-4190 (1493-4190)

SEAL:
REVISIONS:

BF
FLA # 1331
8/9/08

PROJECT:
DR. M. L. PEARCE RESIDENCE
16 LAGORCE CIRCLE
MIAMI BEACH, FLORIDA

Scale 1" = 8'
L-1 2

TITLE:
LANDSCAPE PLAN
DATE: 5 AUG 08
DRAWN: RMF
CHECKED: BF

Van y: J 9/20/08

0120
0120

BO805187
16 Kalgore C
Office Copy

BO805187
OFFICE COPY
CITY OF MIAMI BEACH
APPROVED FOR PERMIT BY
THE FOLLOWING:

BUILDING:	_____
ZONING:	_____
DRB/HPB:	_____ <i>AK 9-26-08</i>
CONCURRENCY:	_____
PLUMBING:	_____ <i>D. J. Lopez</i>
ELECTRICAL:	_____ <i>9/27/08</i>
MECHANICAL:	_____
FIRE PREVENTION:	_____
ENGINEERING:	_____
PUBLIC WORKS:	_____ <i>B. Duval 9/16/08</i>
STRUCTURAL:	_____
ELEVATOR:	_____