

CITY OF MIAMI BEACH HISTORIC PRESERVATION BOARD APPLICATION

119 WASHINGTON AVE MIAMI BEACH, FLORIDA
SCOPE OF WORK : ROOFTOP ADDITION



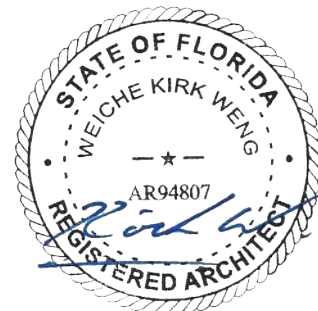
PRE-APPLICATION MEETING : MARCH 28, 2023
FIRST SUBMITTAL : JUNE 20, 2023
FINAL SUBMITTAL : JULY 10, 2023

OWNER:
YANTRA 119 LLC

119 WASHINGTON AVE, SUITE 101
MIAMI BEACH, FL 33139

ARCHITECT OF RECORD:
KIRK WENG ARCHITECTS

7901 LUDLAM ROAD, SUITE 205
MIAMI, FLORIDA 33143
info@kirkweng.com
+1.305.851.3351



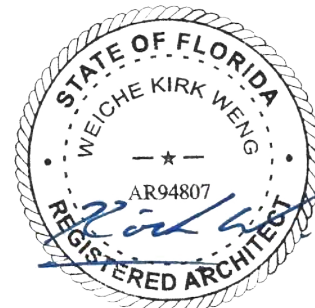
DRAWING INDEX

COVER	COVER SHEET, PROJECT INFO, AND CONTACT
A 0.01	DRAWING INDEX
A 0.02	PROPERTY SURVEY
A 0.03	ZONING DATA SHEET
A 0.04	CONTEXT LOCATION PLAN
A 0.05-1 ~ 6	F.A.R. SHADED DIAGRAMS
A 0.06	PROPOSED SITE PLAN
A 0.07	CURRENT AERIAL PHOTOS
A 0.08	CURRENT SITE PHOTOS
A 0.09	EXISTING CONTEXT PHOTOS
A 0.10	EXISTING CONTEXT PHOTOS
A 0.11	EXISTING PLAN - LEVEL 7
A 0.12	EXISTING PLAN - LEVEL 8 / ROOF
A 0.21	EXISTING BUILDING ELEVATION - WEST
A 0.22	EXISTING BUILDING ELEVATION - SOUTH
A 0.23	EXISTING BUILDING ELEVATION - EAST
A 0.24	EXISTING BUILDING ELEVATION - NORTH
A 1.01	PROPOSED PLAN - LEVEL 7
A 1.02	PROPOSED PLAN - LEVEL 8 / LOWER ROOF
A 1.03	PROPOSED PLAN - ROOF OVERRUN
A 2.01	PROPOSED BUILDING ELEVATION - WEST
A 2.02	PROPOSED BUILDING ELEVATION - SOUTH
A 2.03	PROPOSED BUILDING ELEVATION - EAST
A 2.04	PROPOSED BUILDING ELEVATION - NORTH
A 3.01	PROPOSED BUILDING SECTION
A 4.01	PERSPECTIVE - 3D RENDERING
A 4.02	PERSPECTIVE - 3D RENDERING
A 4.03	PERSPECTIVE - 3D RENDERING
A 4.04	PERSPECTIVE - 3D RENDERING
A 4.05	PERSPECTIVE - 3D RENDERING
A 4.06	PERSPECTIVE - 3D RENDERING
A 5.01	CONTEXTUAL ELEVATION LINE DRAWING
A 5.02	LINE OF SIGHT STUDY

PRE-APPLICATION MEETING : MARCH 28, 2023
FIRST SUBMITTAL : JUNE 20, 2023
FINAL SUBMITTAL : JULY 10, 2023

KIRK WENG ARCHITECTS

7901 LUDLAM ROAD, SUITE 205
MIAMI, FLORIDA 33143
info@kirkweng.com
+1.305.851.3351



A 0.01

DRAWING INDEX



119 WASHINGTON AVE

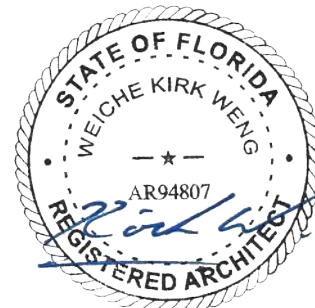
COMMERCIAL - ZONING DATA SHEET

ALL INFORMATION REQUIRED BELOW MUST BE SUBMITTED AS REQUESTED. THE FORMAT OF THIS DOCUMENT MAY NOT BE MODIFIED OR ALTERED IN ANY WAY. SUBMITTALS FOUND INSUFFICIENT OR INCOMPLETE MAY RESULT IN A FAILED REVIEW

ITEM #	Project Information				
1	Address: 119 WASHINGTON AVE MIAMI BEACH, FL 33139	Folio number(s):	02-4203-003-1200	Year built:	2002
2	Board file number(s), Determination of Architectural Significance:	HPB23-0577		Lot Area:	19,500 sf
3	Located within a Local Historic District (Yes or No): Yes	Zoning District:	C-PS1	Lot width:	150'-0"
4	Individual Historic Site (Yes or No):	No		Lot Depth:	130'-0"
5	Base Flood Elevation:	AE-8	Grade value in NGVD:	5.0' NGVD	
6	Adjusted grade (BFE+Grade / 2):	6.5' NGVD	Free board:	EXISTING TO REMAIN	
7	Proposed Use:	OFFICE (6,368 sf)			
8	Proposed Accesory Use:				
9	Signed and sealed Landscape Plans (Tree/Vegetation Survey, Tree Disposition Plan, and Irrigation Plan):	N/A			
ZONING INFORMATION / CALCULATION		Required	Existing	Proposed	Deficiencies
13	Floor Area Ratio (FAR)	2.7	2.48	2.70	-
14	Building Height	90'-0"	74'-6"	89'-3"	-
15	At grade parking lot on the same lot				
a	Front setbacks				
b	Side interior setback				
c	Side facing street setback				
d	Rear setback				
16	Subterranean, Pedestal & Tower (non-Oceanfront)	Required	Existing	Proposed	Deficiencies
a	Front setbacks	0'	0'	0'	
b	Side interior setback	0'	0'	0'	
c	Side facing street setback				
d	Rear setback	5'	5'-2"	5'-2"	
17	Subterranean, Pedestal & Tower (non-Oceanfront)	Required	Existing	Proposed	Deficiencies
a	Front setbacks				
b	Side interior setback				
c	Side facing street setback				
d	Rear setback				
18	Minimum Apartment Unit Size	Required	Existing	Proposed	Deficiencies
a	New Construction				
b	Rehabilitated Buildings				
c	Hotel Unit				
19	Average Apartment Unit Size	Required	Existing	Proposed	Deficiencies
a	New Construction				
b	Rehabilitated Buildings				
c	Hotel Unit				
20	Required Open-space ratio (RPS, CPS)	N/A	EXISTING TO REMAIN	EXISTING TO REMAIN	
21	Parking	131	118	0	13
22	Loading				

KIRK WENG ARCHITECTS

7901 LUDLAM ROAD, SUITE 205
MIAMI, FLORIDA 33143
info@kirkweng.com
+1.305.851.3351



A 0.03
SCALE: 1/XX" = 1'-0"

ZONING DATA SHEET



119 WASHINGTON AVE



KIRK WENG ARCHITECTS

7901 LUDLAM ROAD, SUITE 205
MIAMI, FLORIDA 33143
info@kirkweng.com
+1.305.851.3351



A 0.04

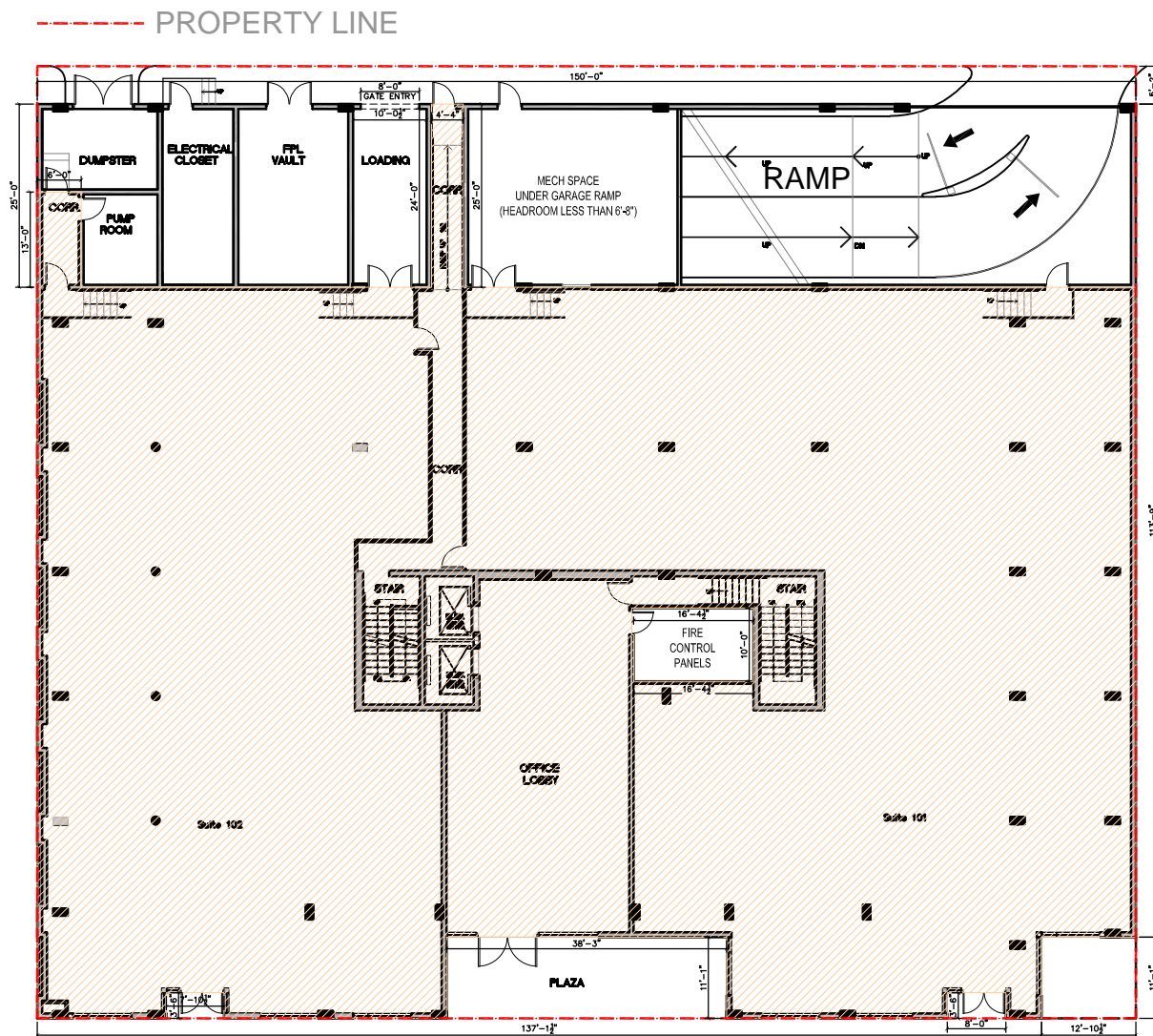
CONTEXT LOCATION PLAN



119 WASHINGTON AVE

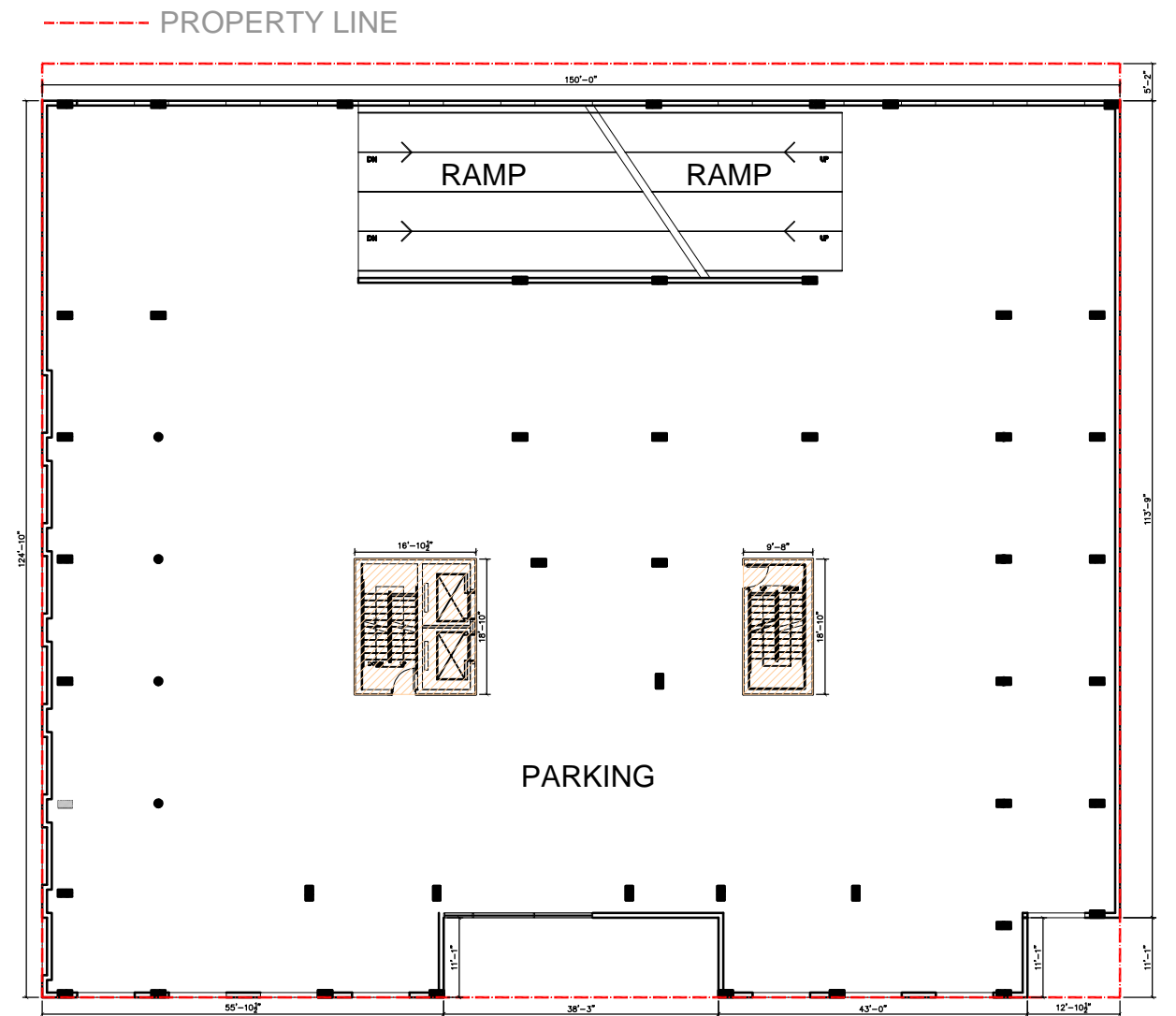
GROSS F.A.R. BREAKDOWN		
	FLOOR AREA (S.F.)	TERRACE W/ COLUMN (S.F.)
GROUND FLOOR	14,374	0
LEVEL 2 - PARKING	493	0
LEVEL 3 - PARKING	493	0
LEVEL 4 - OFFICE	9,726	0
LEVEL 5 - OFFICE	9,726	1,143
LEVEL 6 - OFFICE	10,325	0
LEVEL 7 - ROOFTOP ADDITION	6,368	0
LEVEL 8 - ELEVATOR OVERRUN	0	0
SUB-TOTAL	51,505	1,143
TOTOL		52,648
FLOOR AREA RATIO =	52,648 / 19,500	2.70

GROSS F.A.R. BREAKDOWN		
	FLOOR AREA (S.F.)	TERRACE W/ COLUMN (S.F.)
GROUND FLOOR	14,374	0
LEVEL 2 - PARKING	493	0
LEVEL 3 - PARKING	493	0
LEVEL 4 - OFFICE	9,726	0
LEVEL 5 - OFFICE	9,726	1,143
LEVEL 6 - OFFICE	10,325	0
LEVEL 7 - ROOFTOP ADDITION	6,368	0
LEVEL 8 - ELEVATOR OVERRUN	0	0
SUB-TOTAL	51,505	1,143
TOTOL		52,648
FLOOR AREA RATIO =	52,648 / 19,500	2.70



LEVEL 1:
14,374 SF

 AREA COUNTED TOWARD F.A.R.

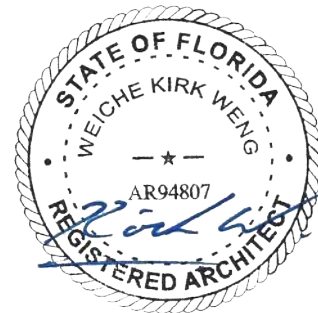


LEVEL 2 : PARKING
493 SF

 AREA COUNTED TOWARD F.A.R.

KIRK WENG ARCHITECTS

7901 LUDLAM ROAD, SUITE 205
MIAMI, FLORIDA 33143
info@kirkweng.com
+1.305.851.3351



A 0.05-1

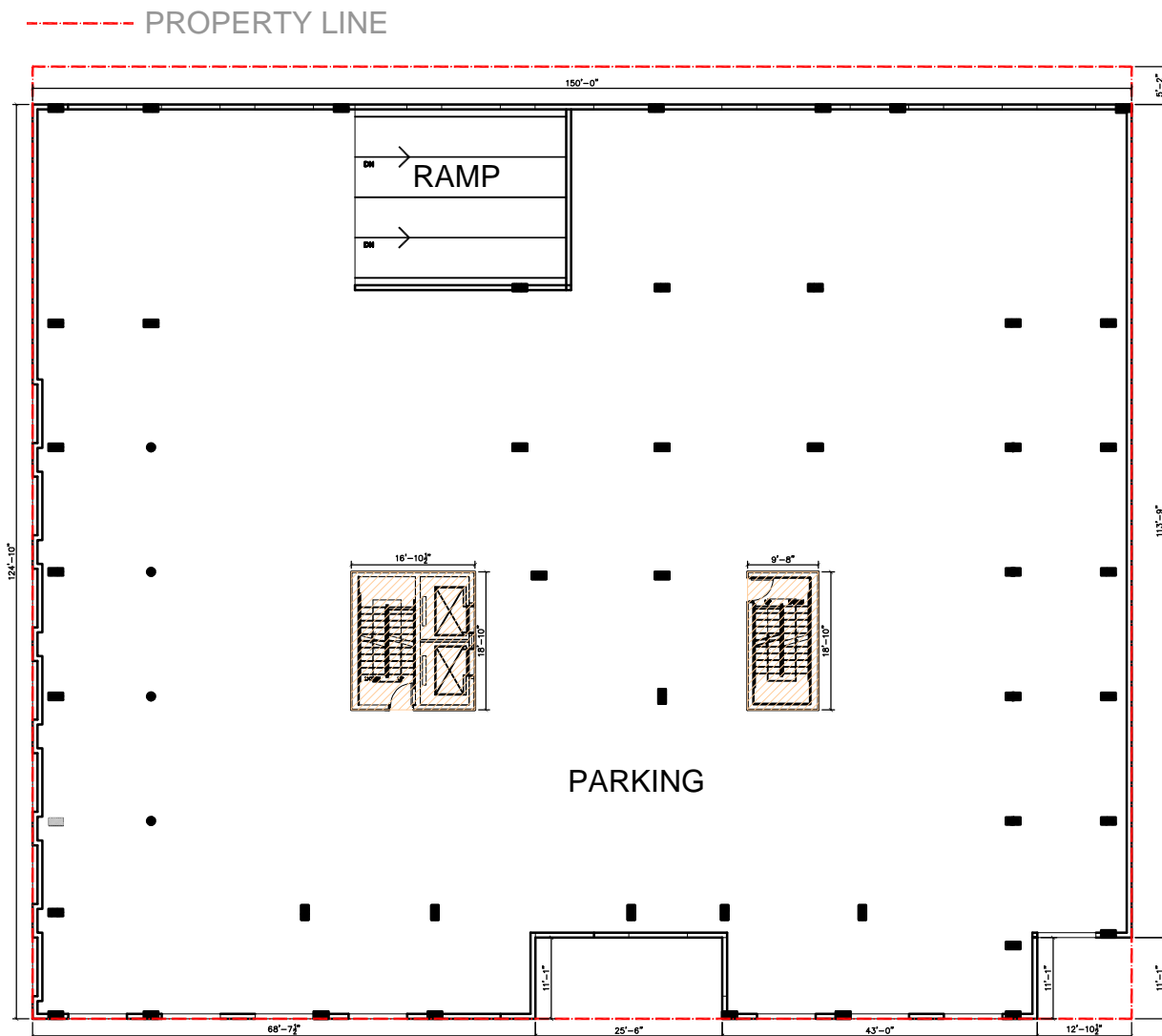
F.A.R. SHADED DIAGRAMS



119 WASHINGTON AVE

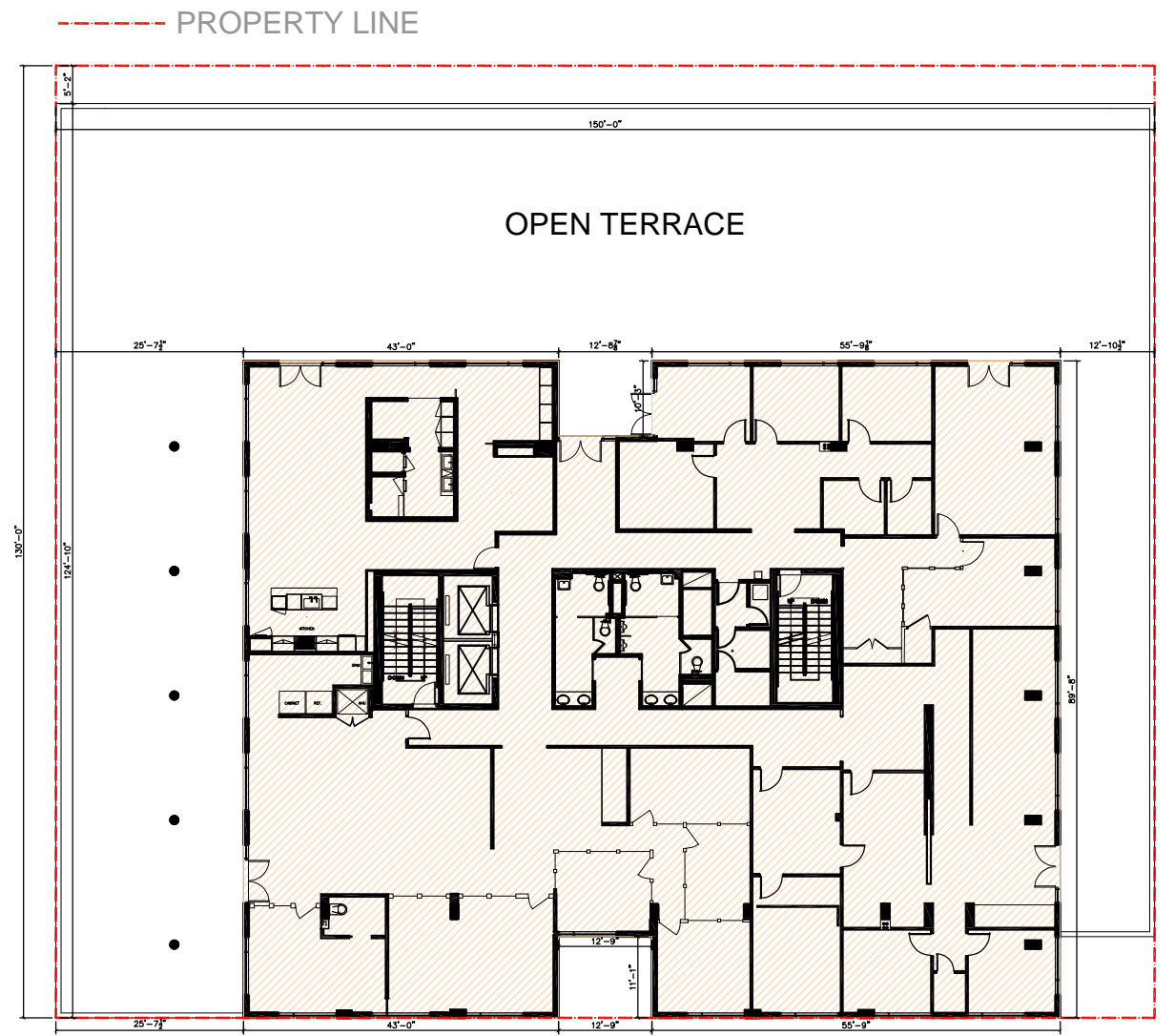
GROSS F.A.R. BREAKDOWN		
	FLOOR AREA (S.F.)	TERRACE W/ COLUMN (S.F.)
GROUND FLOOR	14,374	0
LEVEL 2 - PARKING	493	0
LEVEL 3 - PARKING	493	0
LEVEL 4 - OFFICE	9,726	0
LEVEL 5 - OFFICE	9,726	1,143
LEVEL 6 - OFFICE	10,325	0
LEVEL 7 - ROOFTOP ADDITION	6,368	0
LEVEL 8 - ELEVATOR OVERRUN	0	0
SUB-TOTAL	51,505	1,143
TOTOL		52,648
FLOOR AREA RATIO =	52,648 / 19,500	2.70

GROSS F.A.R. BREAKDOWN		
	FLOOR AREA (S.F.)	TERRACE W/ COLUMN (S.F.)
GROUND FLOOR	14,374	0
LEVEL 2 - PARKING	493	0
LEVEL 3 - PARKING	493	0
LEVEL 4 - OFFICE	9,726	0
LEVEL 5 - OFFICE	9,726	1,143
LEVEL 6 - OFFICE	10,325	0
LEVEL 7 - ROOFTOP ADDITION	6,368	0
LEVEL 8 - ELEVATOR OVERRUN	0	0
SUB-TOTAL	51,505	1,143
TOTOL		52,648
FLOOR AREA RATIO =	52,648 / 19,500	2.70



LEVEL 3 : PARKING
493 SF

 AREA COUNTED TOWARD F.A.R.

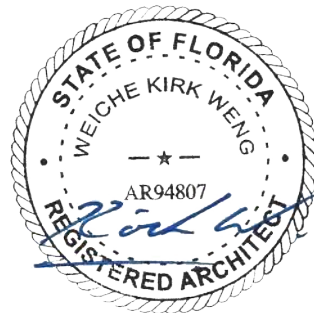


LEVEL 4 : OFFICE
9,726 SF

 AREA COUNTED TOWARD F.A.R.

KIRK WENG ARCHITECTS

7901 LUDLAM ROAD, SUITE 205
MIAMI, FLORIDA 33143
info@kirkweng.com
+1.305.851.3351



A 0.05-2

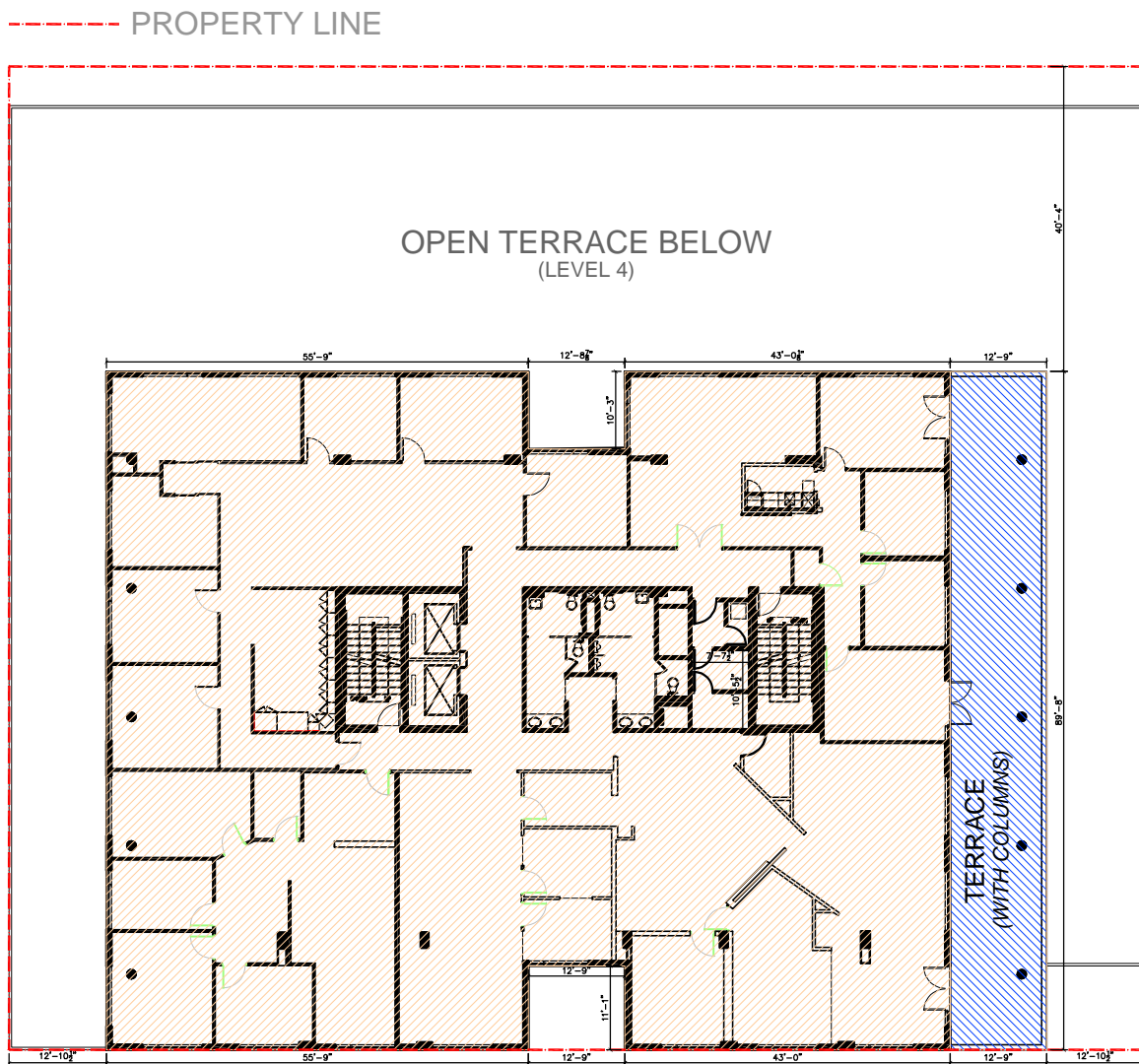
F.A.R. SHADED DIAGRAMS



119 WASHINGTON AVE

GROSS F.A.R. BREAKDOWN		
	FLOOR AREA (S.F.)	TERRACE W/ COLUMN (S.F.)
GROUND FLOOR	14,374	0
LEVEL 2 - PARKING	493	0
LEVEL 3 - PARKING	493	0
LEVEL 4 - OFFICE	9,726	0
LEVEL 5 - OFFICE	9,726	1,143
LEVEL 6 - OFFICE	10,325	0
LEVEL 7 - ROOFTOP ADDITION	6,368	0
LEVEL 8 - ELEVATOR OVERRUN	0	0
SUB-TOTAL	51,505	1,143
TOTOL		52,648
FLOOR AREA RATIO =	52,648 / 19,500	2.70

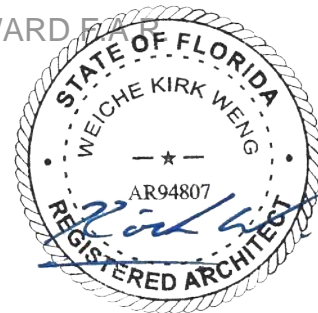
GROSS F.A.R. BREAKDOWN		
	FLOOR AREA (S.F.)	TERRACE W/ COLUMN (S.F.)
GROUND FLOOR	14,374	0
LEVEL 2 - PARKING	493	0
LEVEL 3 - PARKING	493	0
LEVEL 4 - OFFICE	9,726	0
LEVEL 5 - OFFICE	9,726	1,143
LEVEL 6 - OFFICE	10,325	0
LEVEL 7 - ROOFTOP ADDITION	6,368	0
LEVEL 8 - ELEVATOR OVERRUN	0	0
SUB-TOTAL	51,505	1,143
TOTOL		52,648
FLOOR AREA RATIO =	52,648 / 19,500	2.70



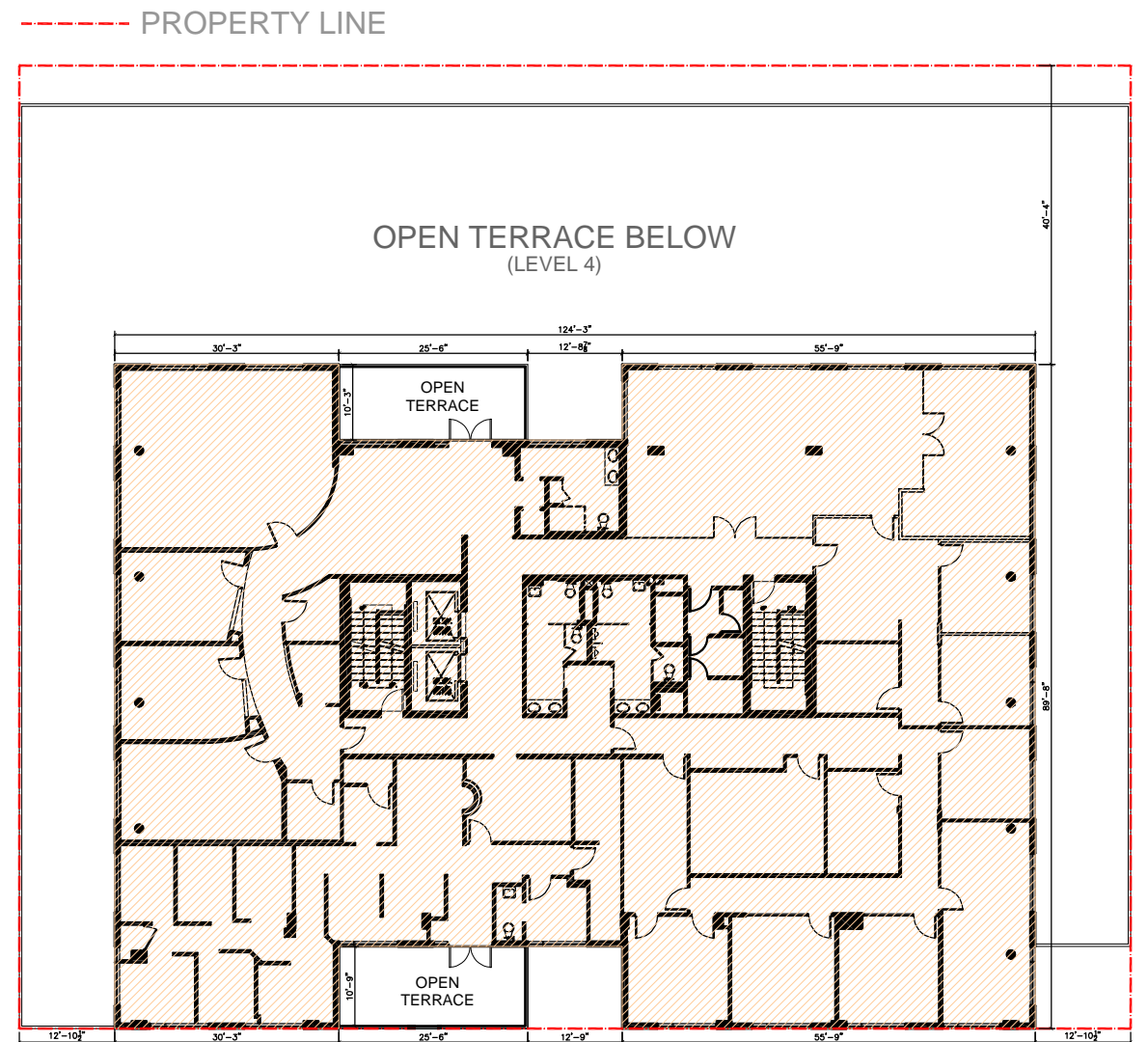
LEVEL 5 : OFFICE
9,726 SF + 1,143 SF TERRACE

- AREA COUNTED TOWARD F.A.R.
- TERRACE COUNTED TOWARD F.A.R.

KIRK WENG ARCHITECTS



7901 LUDLAM ROAD, SUITE 205
MIAMI, FLORIDA 33143
info@kirkweng.com
+1.305.851.3351



LEVEL 6 : OFFICE
10,325 SF

- AREA COUNTED TOWARD F.A.R.

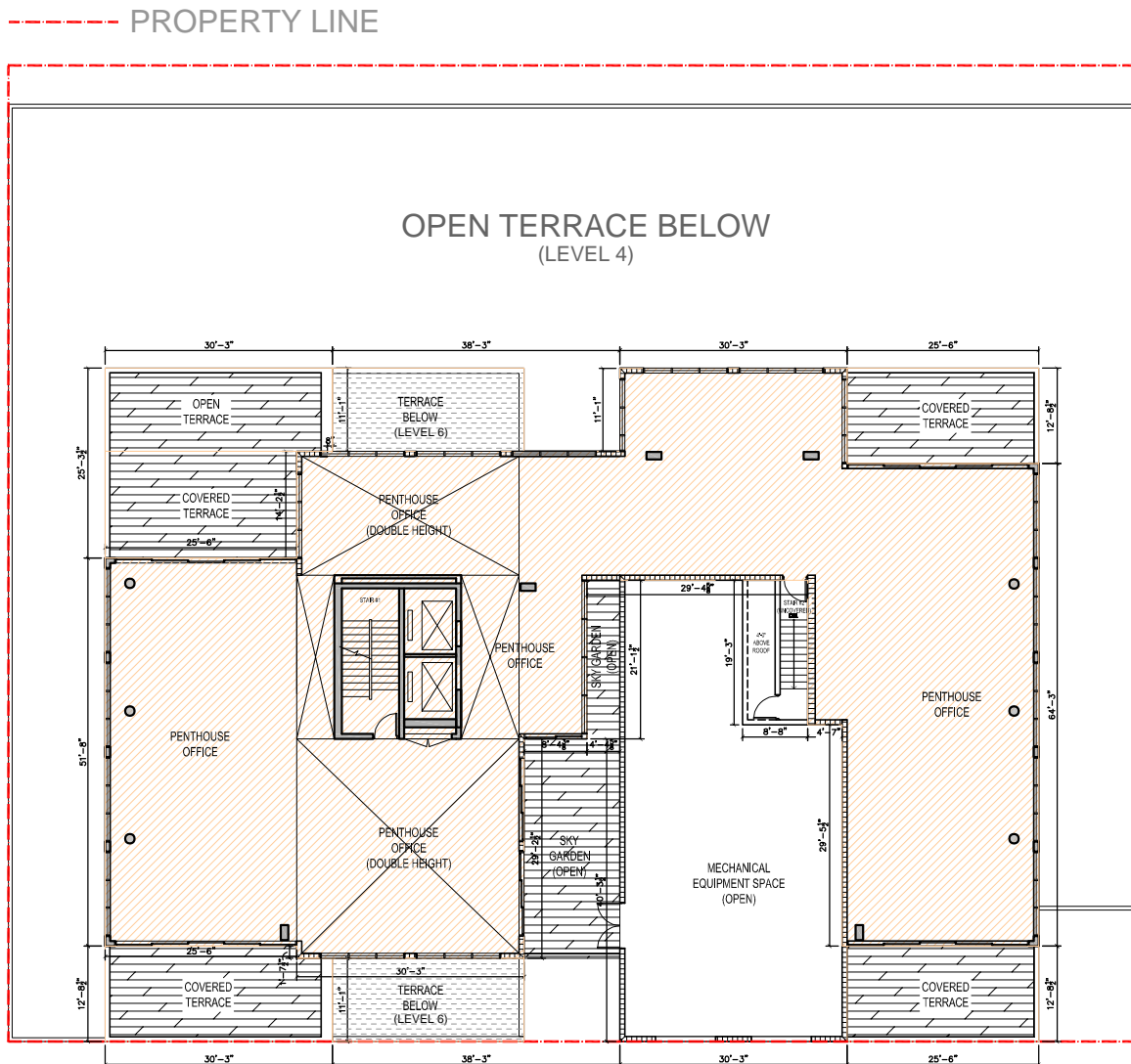
A 0.05-3

F.A.R. SHADED DIAGRAMS



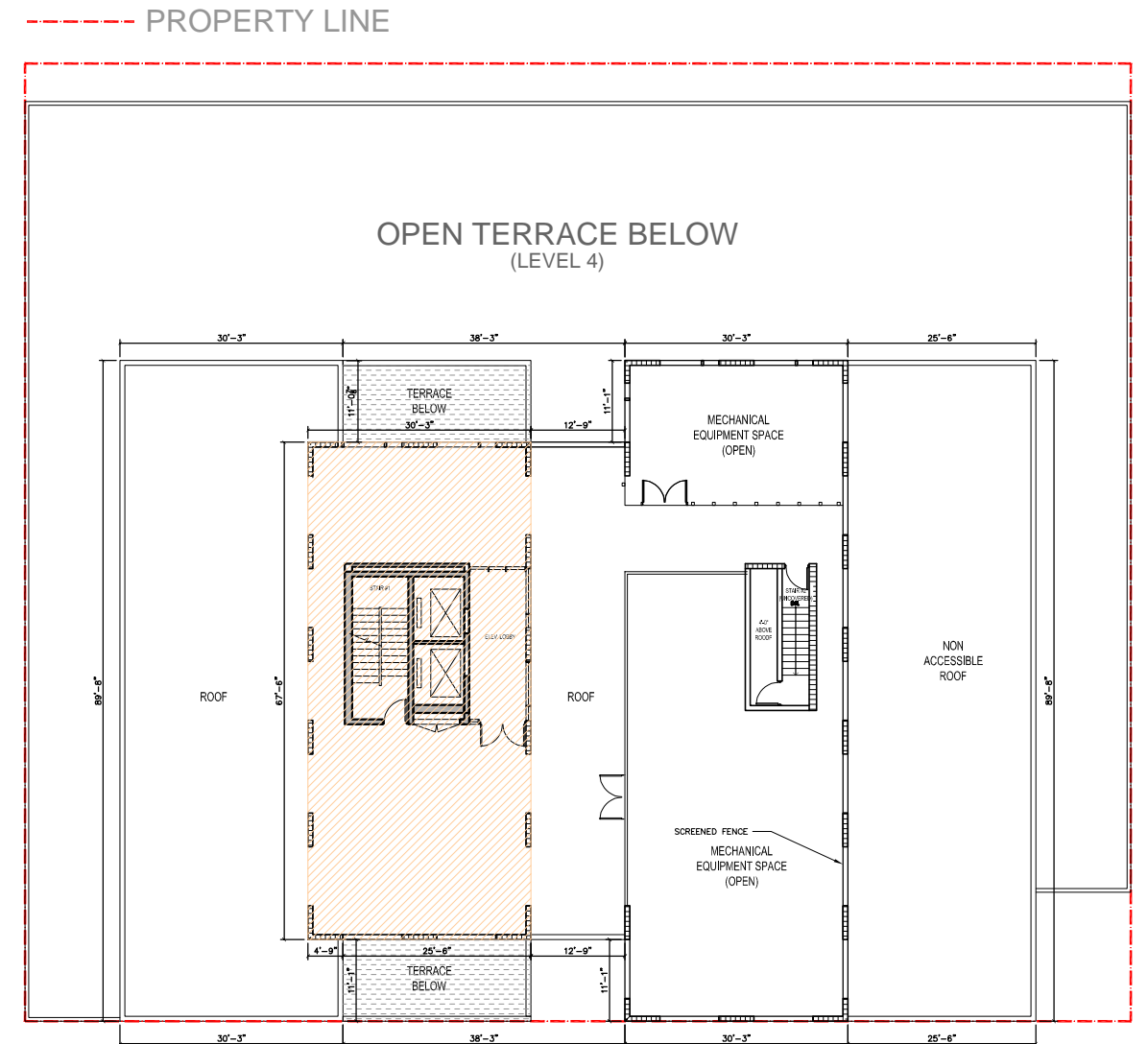
119 WASHINGTON AVE

GROSS F.A.R. BREAKDOWN		
	FLOOR AREA (S.F.)	TERRACE W/ COLUMN (S.F.)
GROUND FLOOR	14,374	0
LEVEL 2 - PARKING	493	0
LEVEL 3 - PARKING	493	0
LEVEL 4 - OFFICE	9,726	0
LEVEL 5 - OFFICE	9,726	1,143
LEVEL 6 - OFFICE	10,325	0
LEVEL 7 - ROOFTOP ADDITION	6,368	0
LEVEL 8 - ELEVATOR OVERRUN	0	0
SUB-TOTAL	51,505	1,143
TOTOL		52,648
FLOOR AREA RATIO =	52,648 / 19,500	2.70



LEVEL 7 : OFFICE (ROOFTOP ADDITION)
6,368 SF

 AREA COUNTED TOWARD F.A.R.

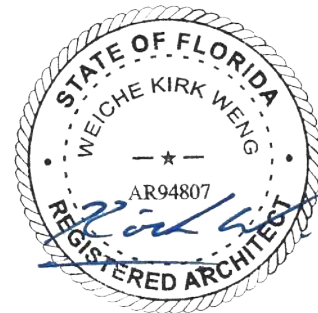


LEVEL 7 : EXISTING CONDITION
2,042 SF

 AREA COUNTED TOWARD F.A.R.

KIRK WENG ARCHITECTS

7901 LUDLAM ROAD, SUITE 205
MIAMI, FLORIDA 33143
info@kirkweng.com
+1.305.851.3351



A 0.05-4

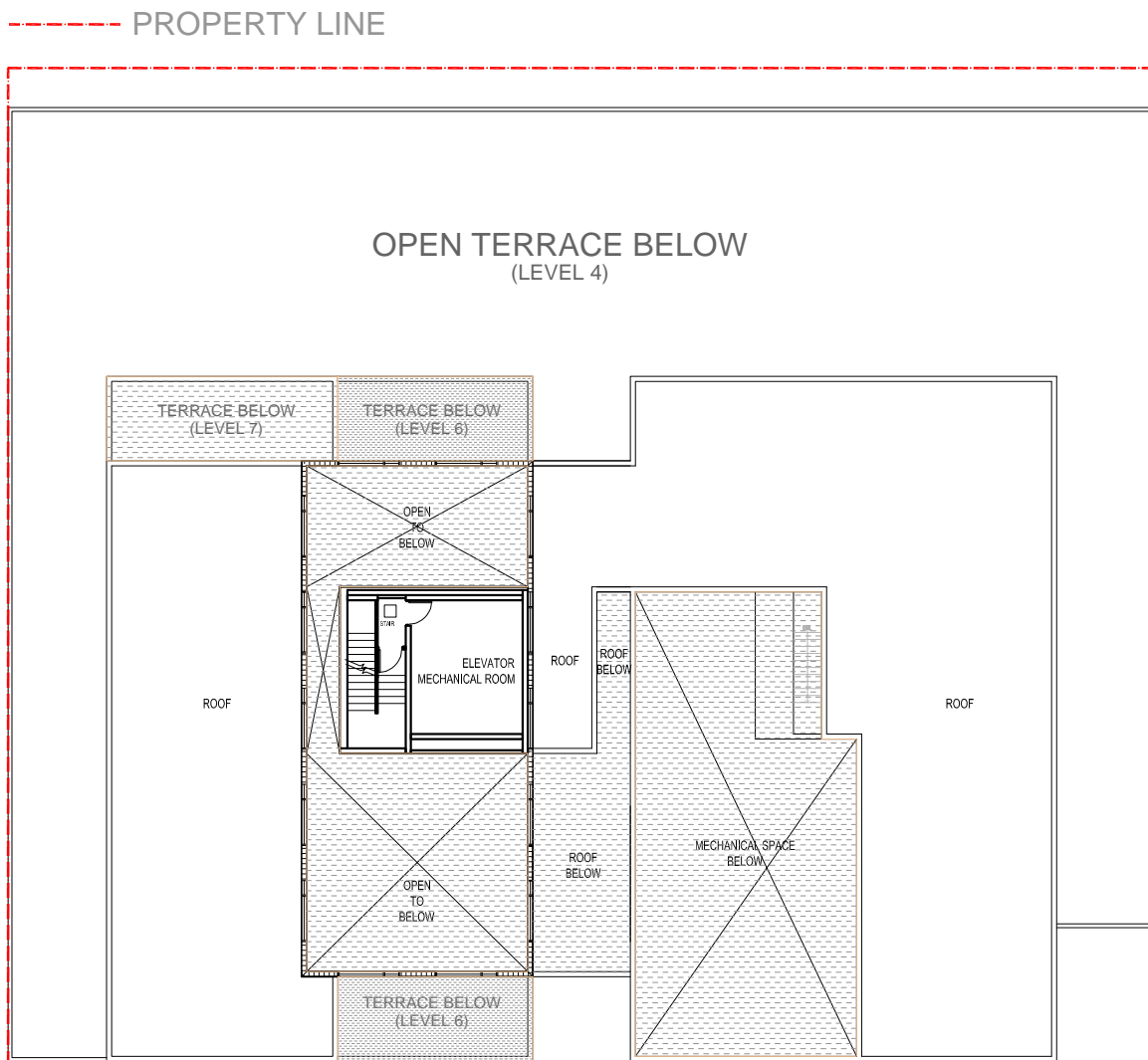
F.A.R. SHADED DIAGRAMS



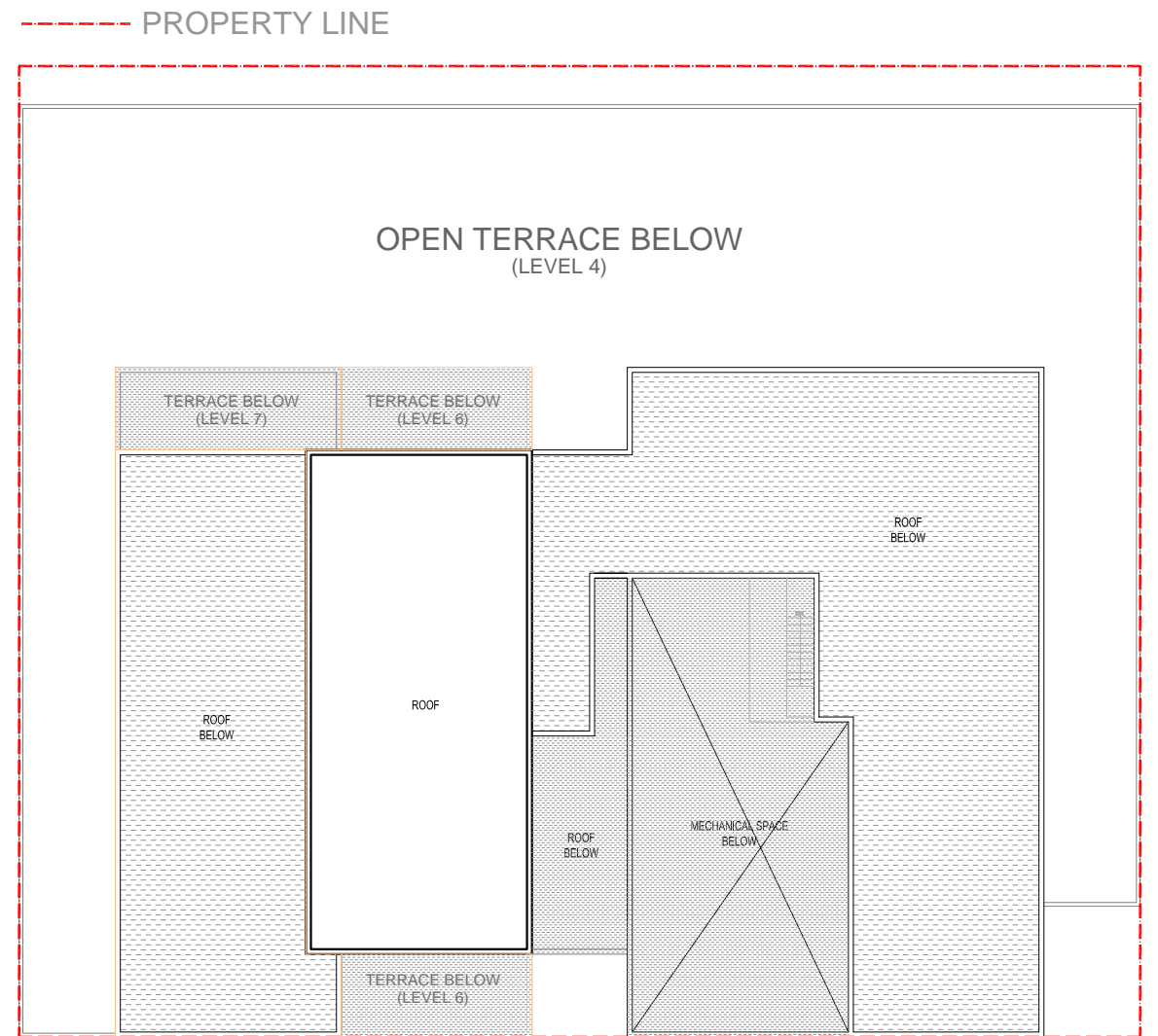
119 WASHINGTON AVE

GROSS F.A.R. BREAKDOWN		
	FLOOR AREA (S.F.)	TERRACE W/ COLUMN (S.F.)
GROUND FLOOR	14,374	0
LEVEL 2 - PARKING	493	0
LEVEL 3 - PARKING	493	0
LEVEL 4 - OFFICE	9,726	0
LEVEL 5 - OFFICE	9,726	1,143
LEVEL 6 - OFFICE	10,325	0
LEVEL 7 - ROOFTOP ADDITION	6,368	0
LEVEL 8 - ELEVATOR OVERRUN	0	0
SUB-TOTAL	51,505	1,143
TOTOL		52,648
FLOOR AREA RATIO =	52,648 / 19,500	2.70

GROSS F.A.R. BREAKDOWN		
	FLOOR AREA (S.F.)	TERRACE W/ COLUMN (S.F.)
GROUND FLOOR	14,374	0
LEVEL 2 - PARKING	493	0
LEVEL 3 - PARKING	493	0
LEVEL 4 - OFFICE	9,726	0
LEVEL 5 - OFFICE	9,726	1,143
LEVEL 6 - OFFICE	10,325	0
LEVEL 7 - ROOFTOP ADDITION	6,368	0
LEVEL 8 - ELEVATOR OVERRUN	0	0
SUB-TOTAL	51,505	1,143
TOTOL		52,648
FLOOR AREA RATIO =	52,648 / 19,500	2.70



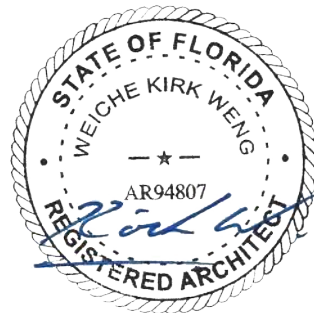
MECH AND ELEVATOR OVERRUN
0 SF



ROOF
0 SF

KIRK WENG ARCHITECTS

7901 LUDLAM ROAD, SUITE 205
MIAMI, FLORIDA 33143
info@kirkweng.com
+1.305.851.3351



A 0.05-5

F.A.R. SHADED DIAGRAMS



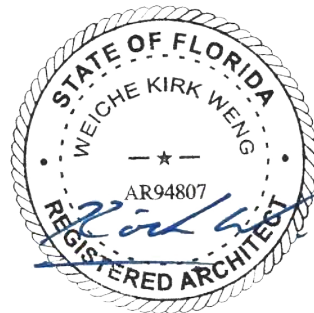
119 WASHINGTON AVE

GROSS F.A.R. BREAKDOWN		
	FLOOR AREA (S.F.)	TERRACE W/ COLUMN (S.F.)
GROUND FLOOR	14,374	0
LEVEL 2 - PARKING	493	0
LEVEL 3 - PARKING	493	0
LEVEL 4 - OFFICE	9,726	0
LEVEL 5 - OFFICE	9,726	1,143
LEVEL 6 - OFFICE	10,325	0
LEVEL 7 - ROOFTOP ADDITION	6,368	0
LEVEL 8 - ELEVATOR OVERRUN	0	0
SUB-TOTAL	51,505	1,143
TOTAL		52,648
FLOOR AREA RATIO =	52,648 / 19,500	2.70

FLOOR AREA = 52,648 SF
 LOT AREA = 19,500 SF
FLOOR AREA RATIO = 2.70

KIRK WENG ARCHITECTS

7901 LUDLAM ROAD, SUITE 205
 MIAMI, FLORIDA 33143
 info@kirkweng.com
 +1.305.851.3351

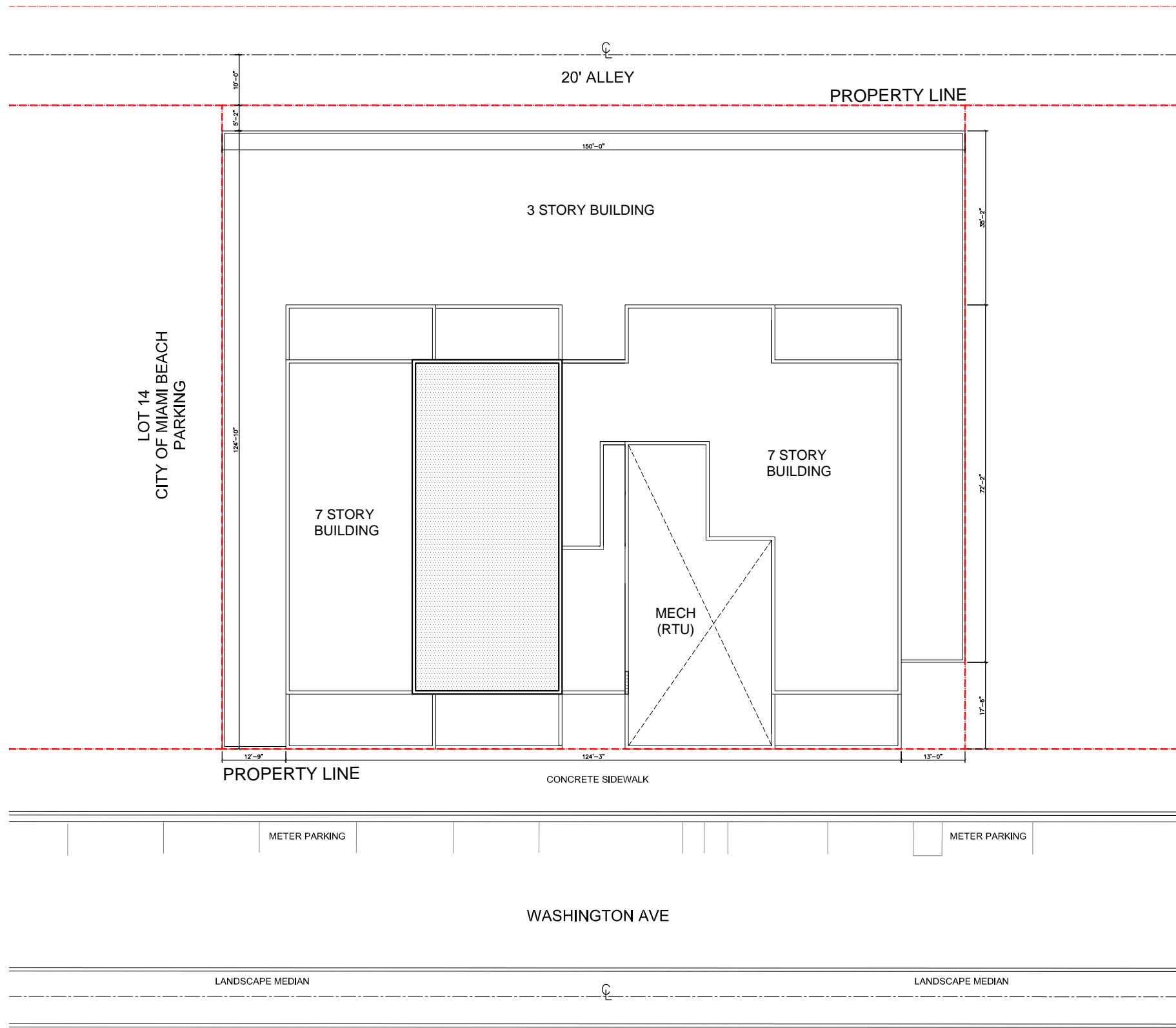


A 0.05-6

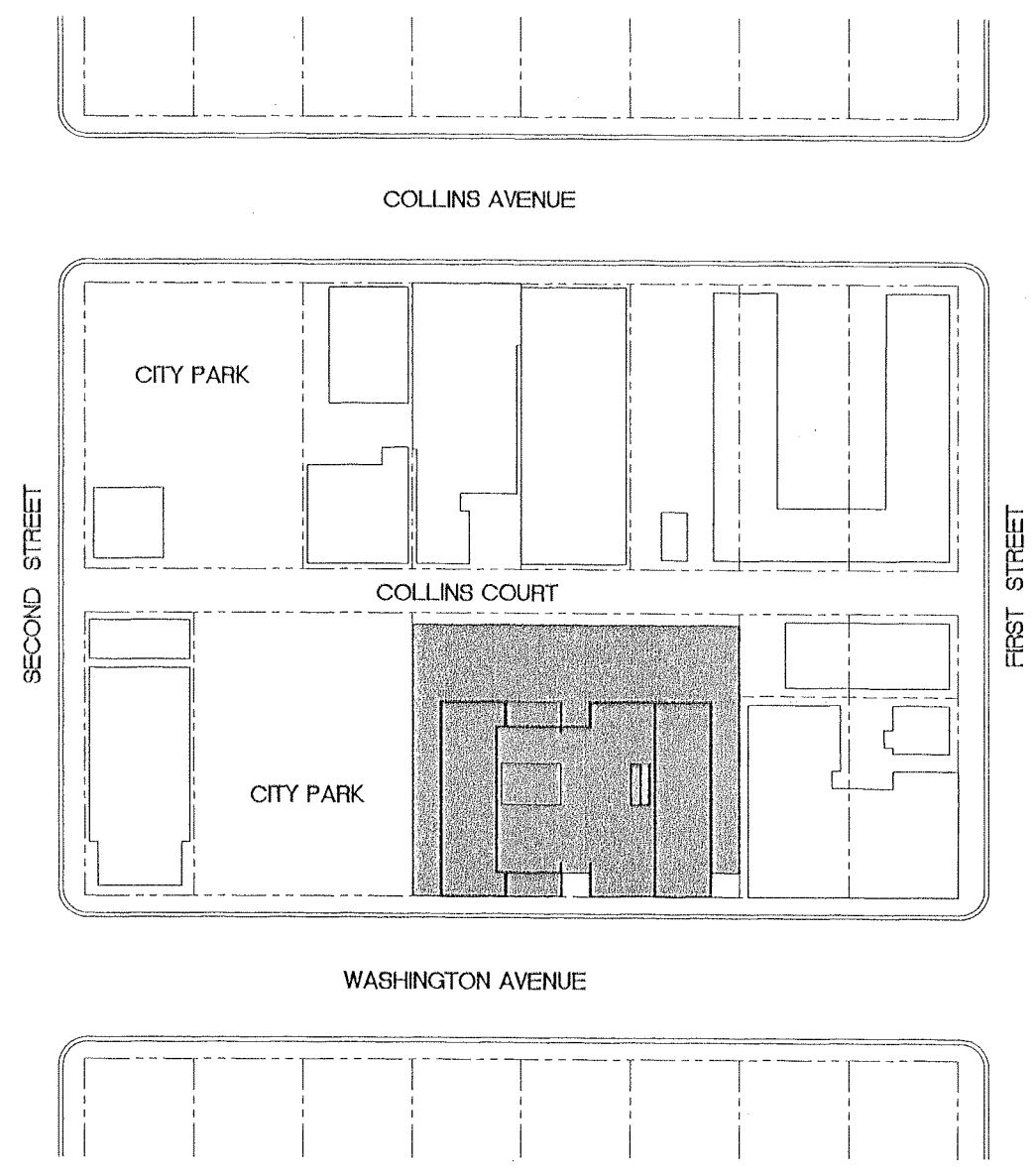
F.A.R. SHADED DIAGRAMS



119 WASHINGTON AVE



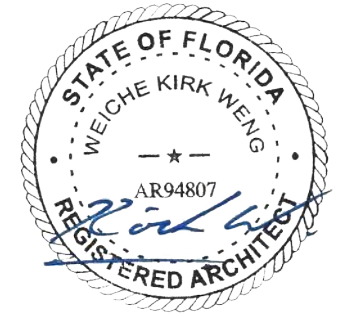
PROPOSED SITE PLAN
SCALE: 1" = 25'-0"



LOCATION PLAN
SCALE: N.T.S.

KIRK WENG ARCHITECTS

7901 LUDLAM ROAD, SUITE 205
MIAMI, FLORIDA 33143
info@kirkweng.com
+1.305.851.3351



A 0.06
SCALE: 1/16" = 1'-0"

PROPOSED SITE PLAN



119 WASHINGTON AVE



VIEW TO EAST



VIEW TO SOUTHWEST



VIEW TO SOUTH



VIEW TO NORTHEAST

KIRK WENG ARCHITECTS

7901 LUDLAM ROAD, SUITE 205
MIAMI, FLORIDA 33143
info@kirkweng.com
+1.305.851.3351



A 0.07

PHOTO DATE: 2021 OCT

CURRENT AERIAL PHOTOS



119 WASHINGTON AVE



EXISTING NORTH/WEST FACADE



EXISTING SOUTH/WEST FACADE



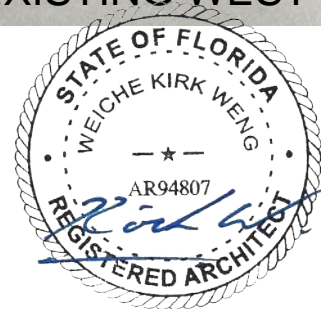
EXISTING WEST FACADE



EXISTING EAST FACADE

KIRK WENG ARCHITECTS

7901 LUDLAM ROAD, SUITE 205
MIAMI, FLORIDA 33143
info@kirkweng.com
+1.305.851.3351



A 0.08

PHOTO DATE: 2023 APR

CURRENT SITE PHOTOS

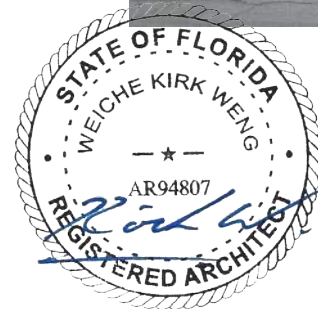


119 WASHINGTON AVE



KIRK WENG ARCHITECTS

7901 LUDLAM ROAD, SUITE 205
 MIAMI, FLORIDA 33143
 info@kirkweng.com
 +1.305.851.3351



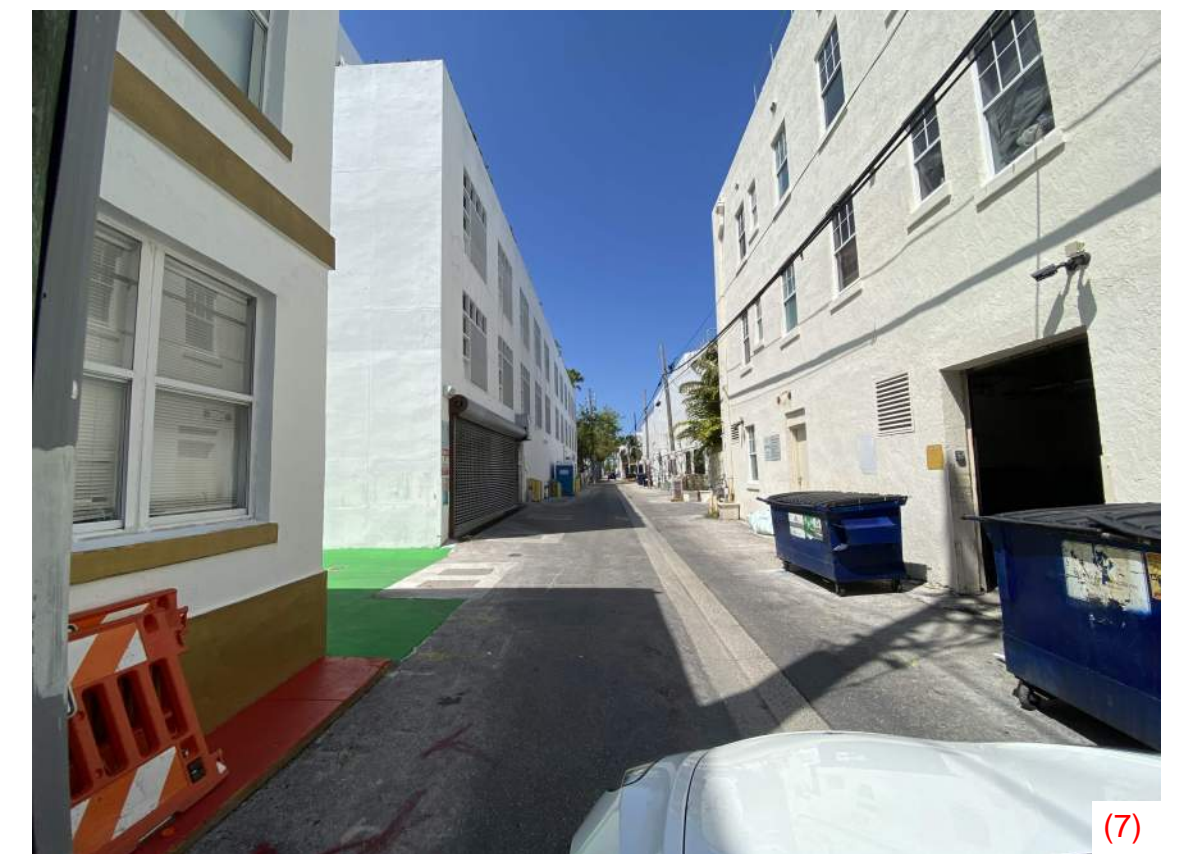
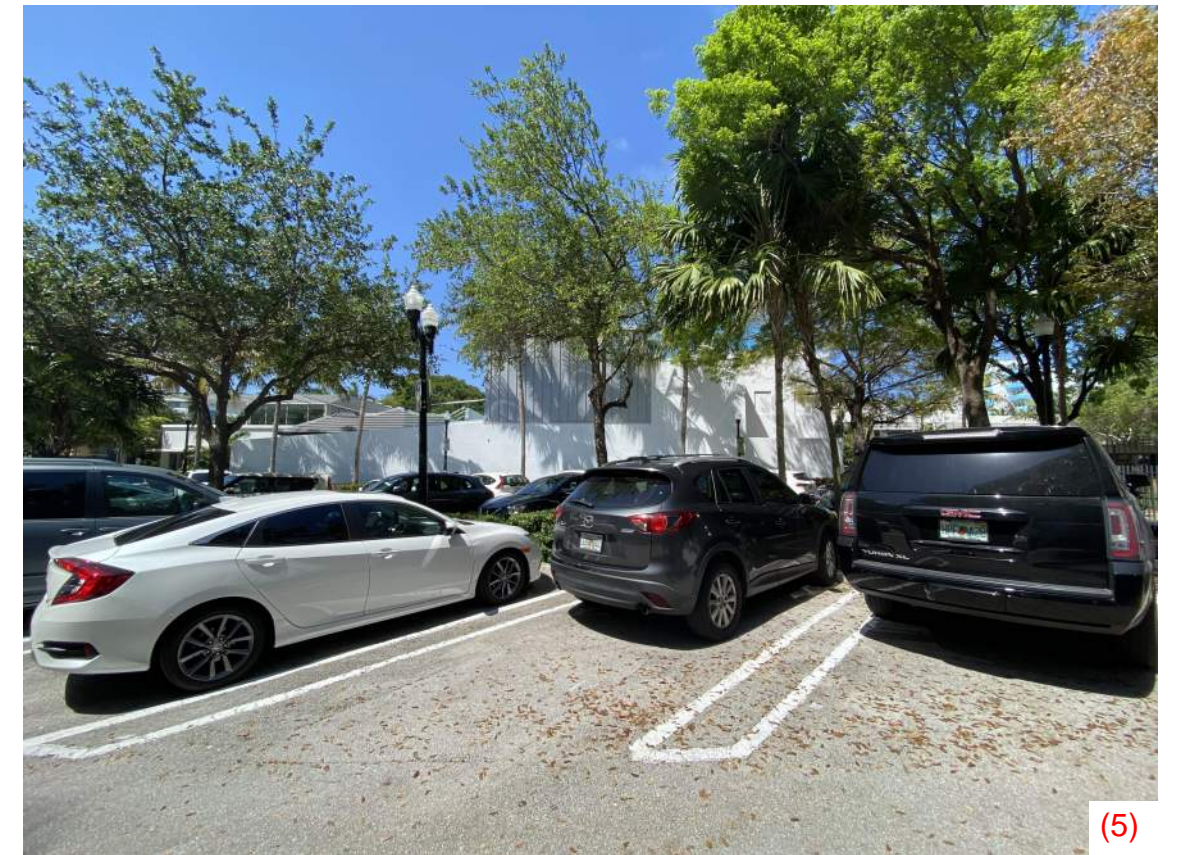
A 0.09

PHOTO DATE: 2023 APR

EXISTING CONTEXT PHOTOS

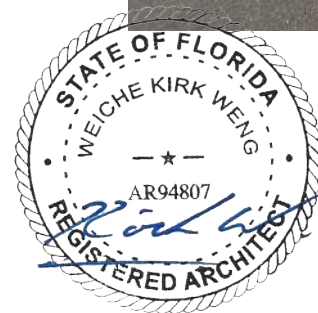


119 WASHINGTON AVE



KIRK WENG ARCHITECTS

7901 LUDLAM ROAD, SUITE 205
 MIAMI, FLORIDA 33143
 info@kirkweng.com
 +1.305.851.3351

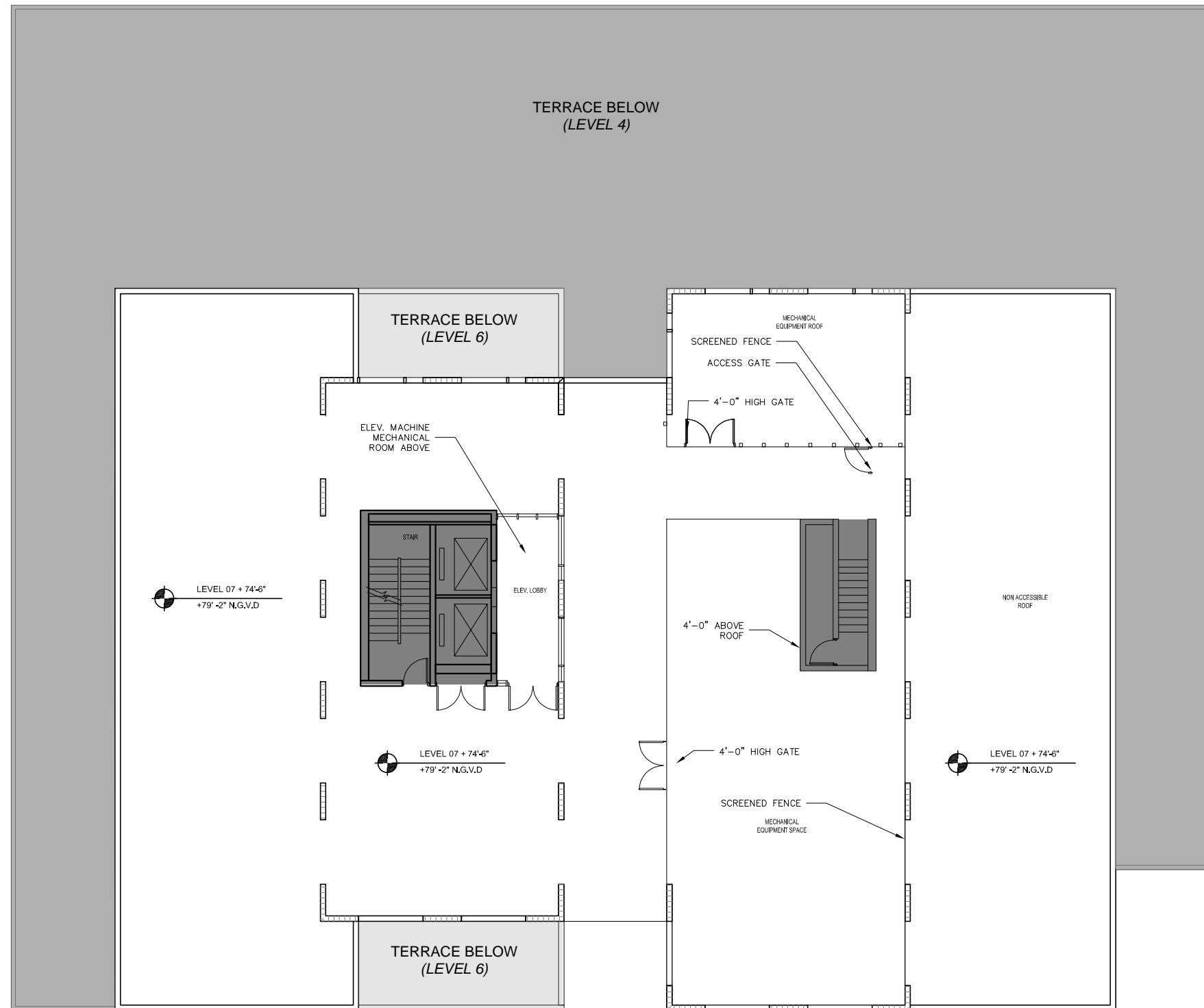


A 0.10
 PHOTO DATE: 2023 APR

EXISTING CONTEXT PHOTOS

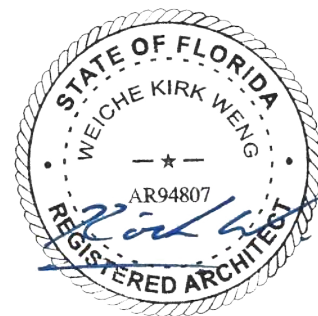


119 WASHINGTON AVE



KIRK WENG ARCHITECTS

7901 LUDLAM ROAD, SUITE 205
 MIAMI, FLORIDA 33143
 info@kirkweng.com
 +1.305.851.3351

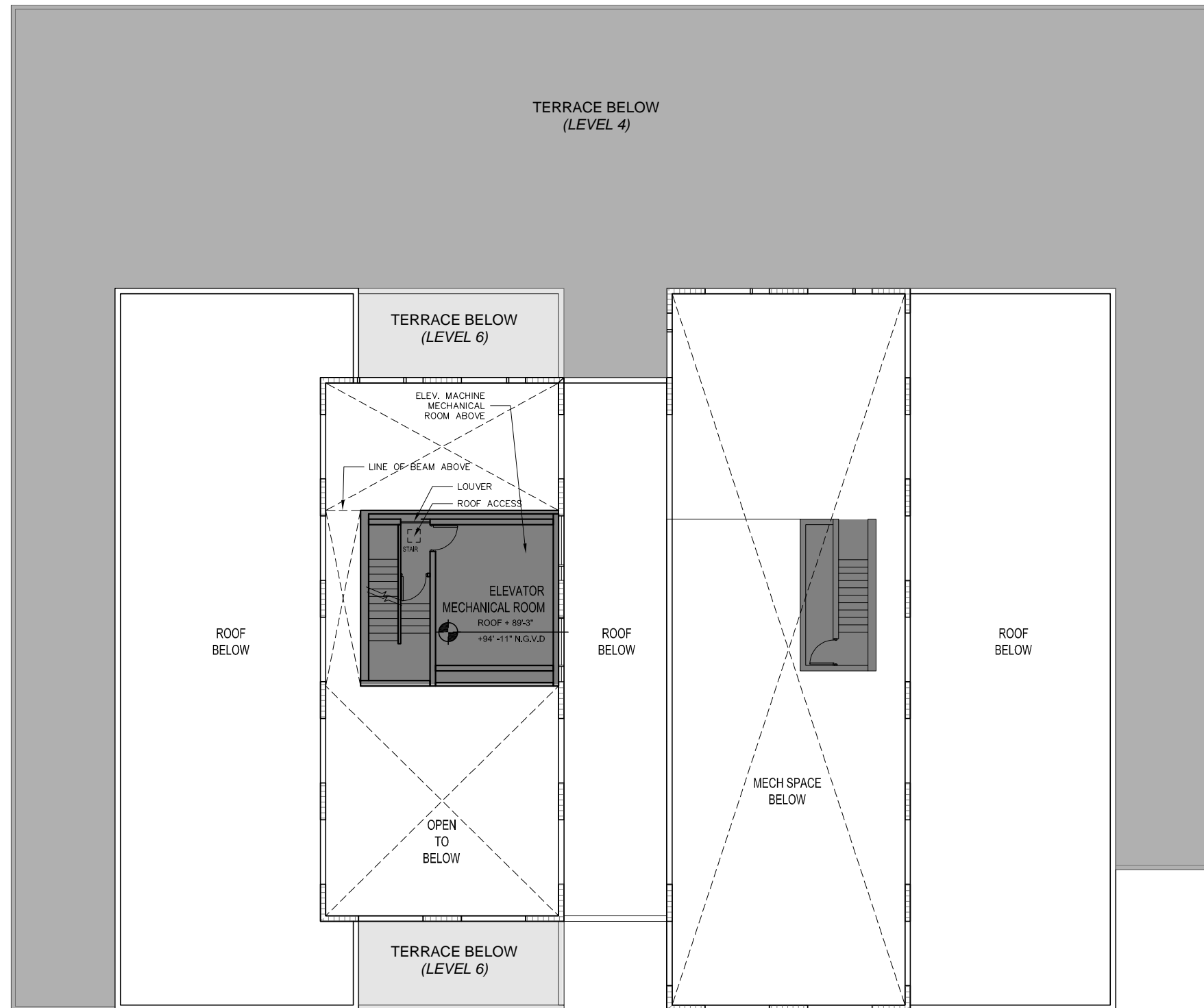


A 0.11
 SCALE: 1/16" = 1'-0"

EXISTING LEVEL 7 PLAN

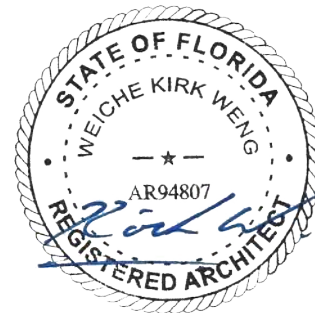


119 WASHINGTON AVE



KIRK WENG ARCHITECTS

7901 LUDLAM ROAD, SUITE 205
 MIAMI, FLORIDA 33143
 info@kirkweng.com
 +1.305.851.3351

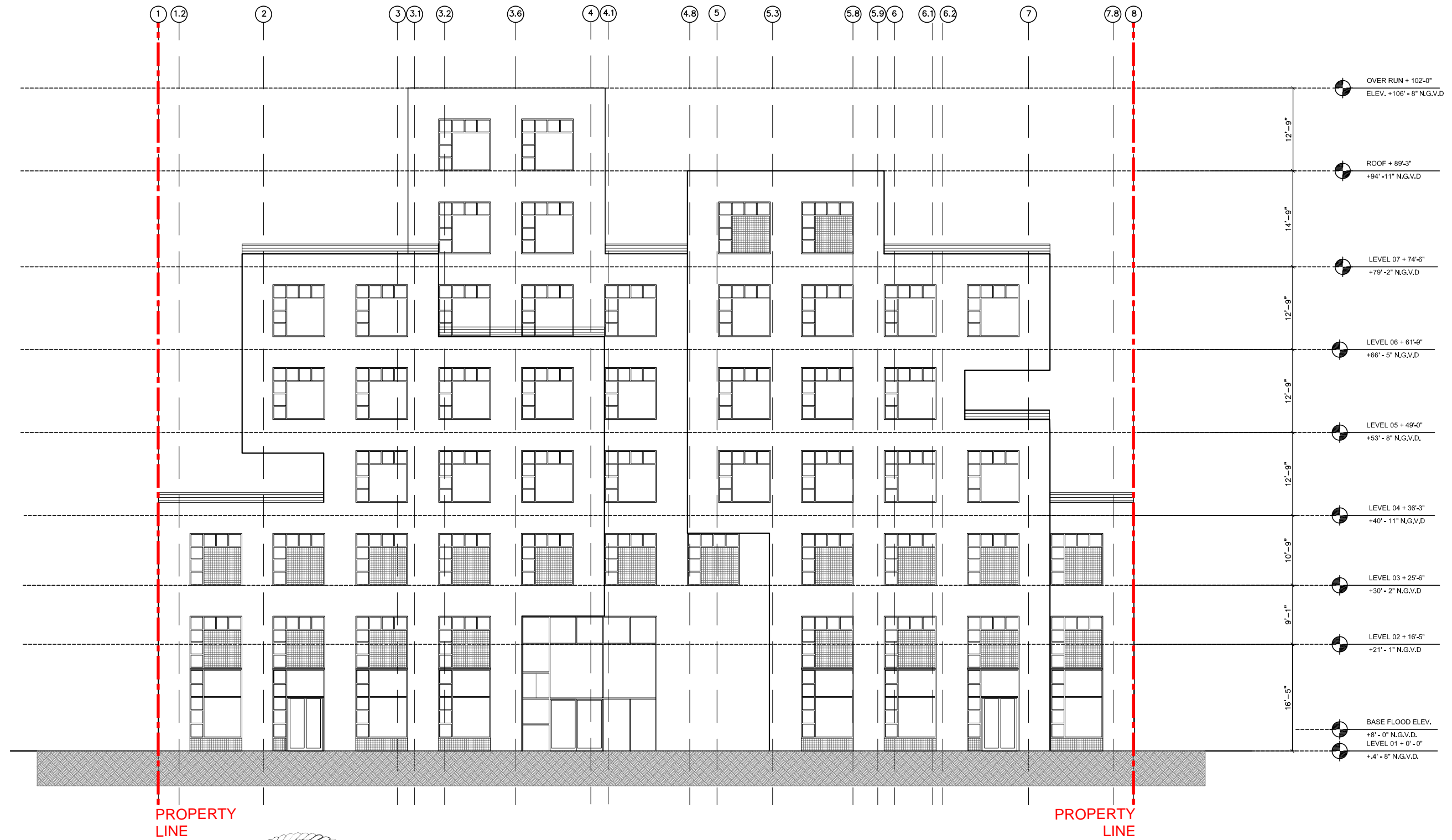


A 0.12
 SCALE: 1/16" = 1'-0"

EXISTING LEVEL 8 / ROOF PLAN

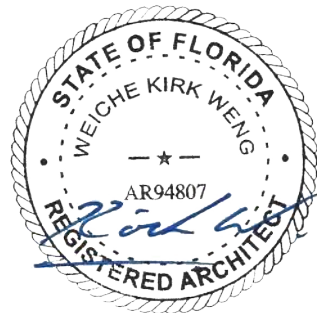


119 WASHINGTON AVE



KIRK WENG ARCHITECTS

7901 LUDLAM ROAD, SUITE 205
 MIAMI, FLORIDA 33143
 info@kirkweng.com
 +1.305.851.3351

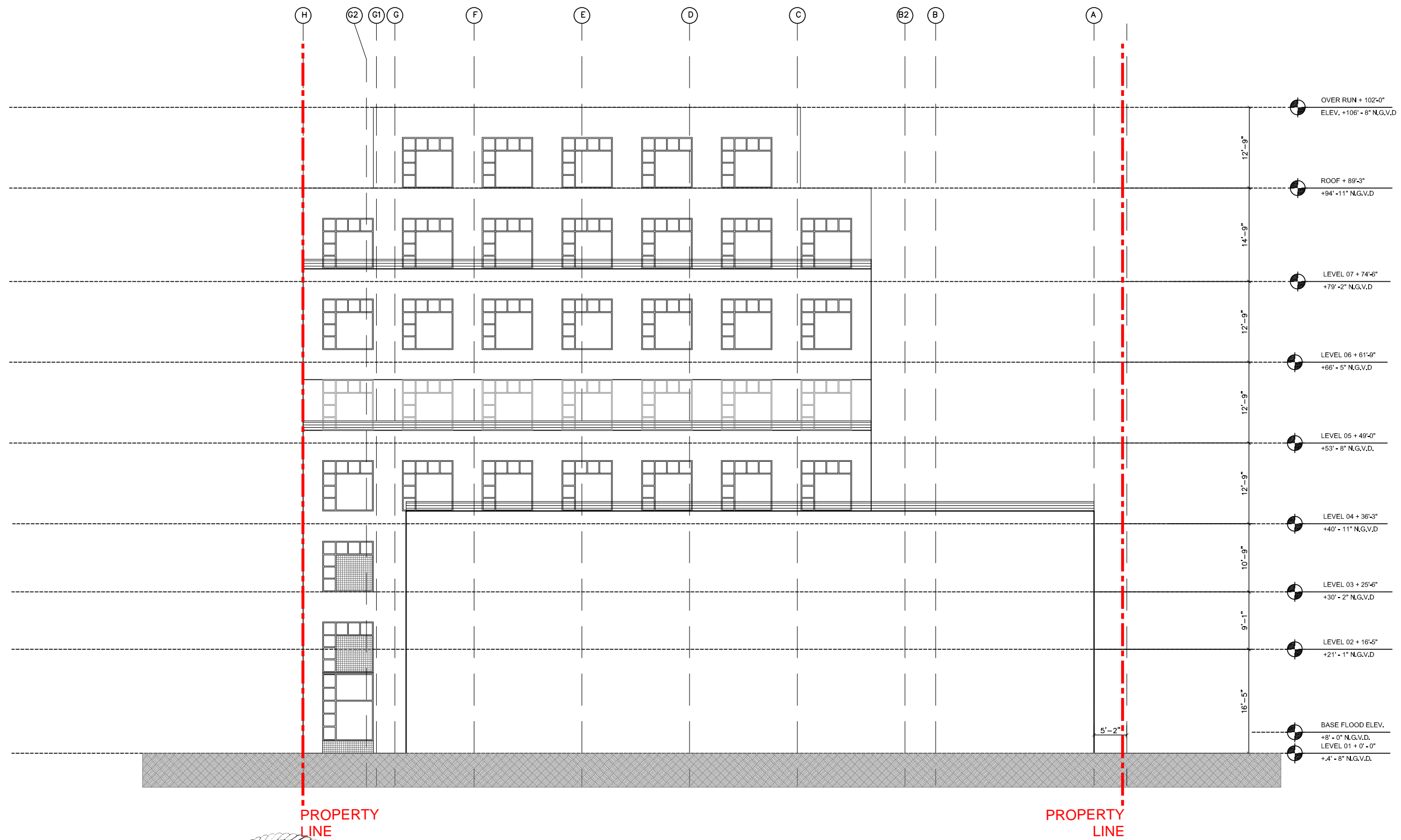


A 0.21
 SCALE: 1/16" = 1'-0"

EXISTING BUILDING ELEVATION - WEST

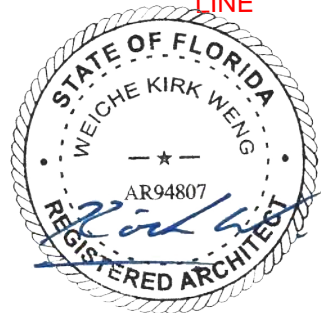


119 WASHINGTON AVE



KIRK WENG ARCHITECTS

7901 LUDLAM ROAD, SUITE 205
 MIAMI, FLORIDA 33143
 info@kirkweng.com
 +1.305.851.3351

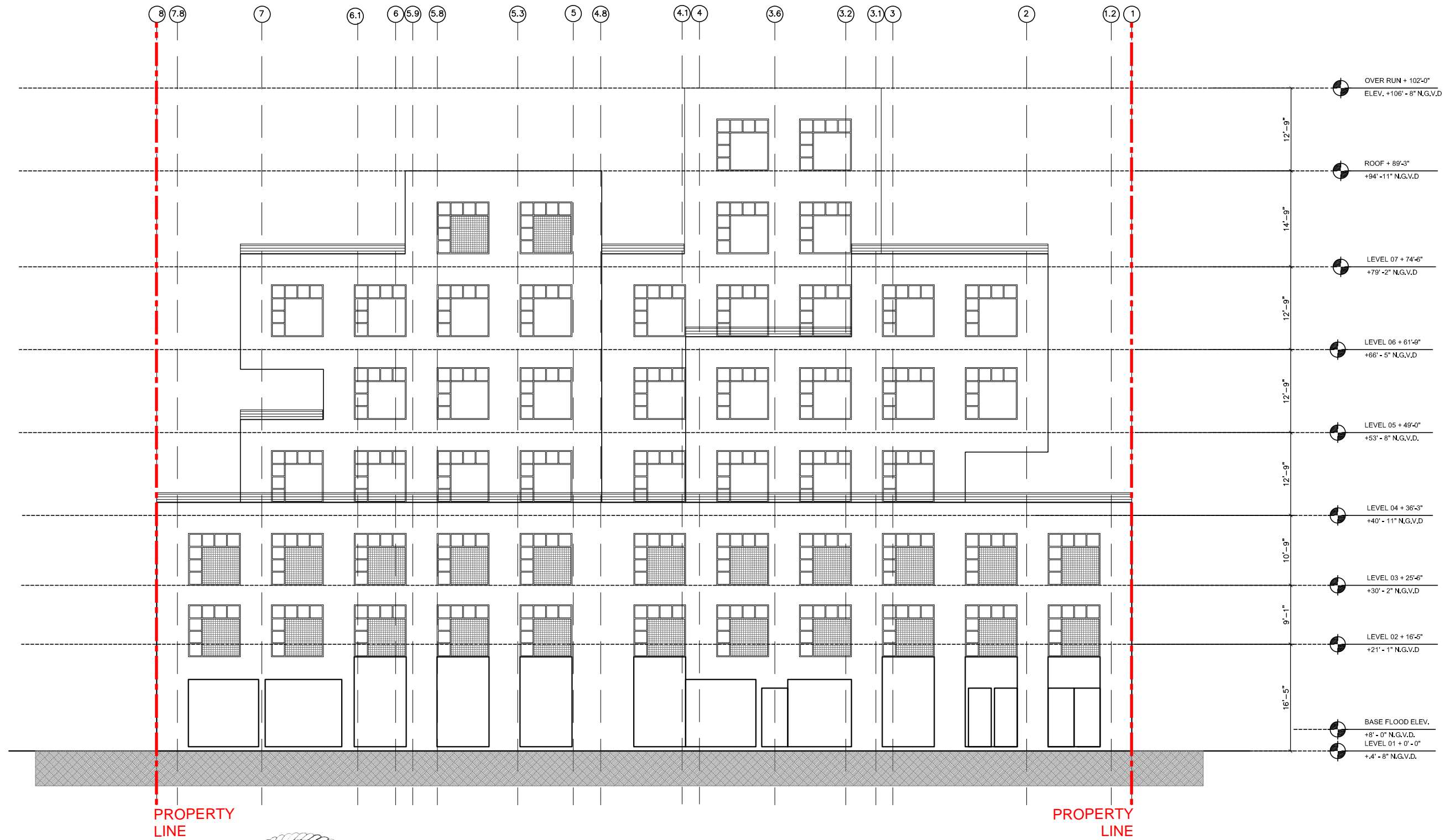


A 0.22
 SCALE: 1/16" = 1'-0"

EXISTING BUILDING ELEVATION - SOUTH

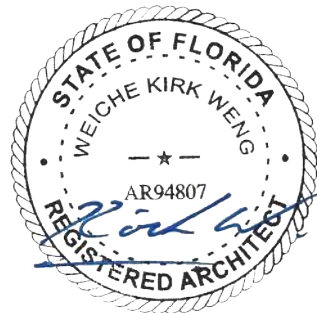


119 WASHINGTON AVE



KIRK WENG ARCHITECTS

7901 LUDLAM ROAD, SUITE 205
 MIAMI, FLORIDA 33143
 info@kirkweng.com
 +1.305.851.3351

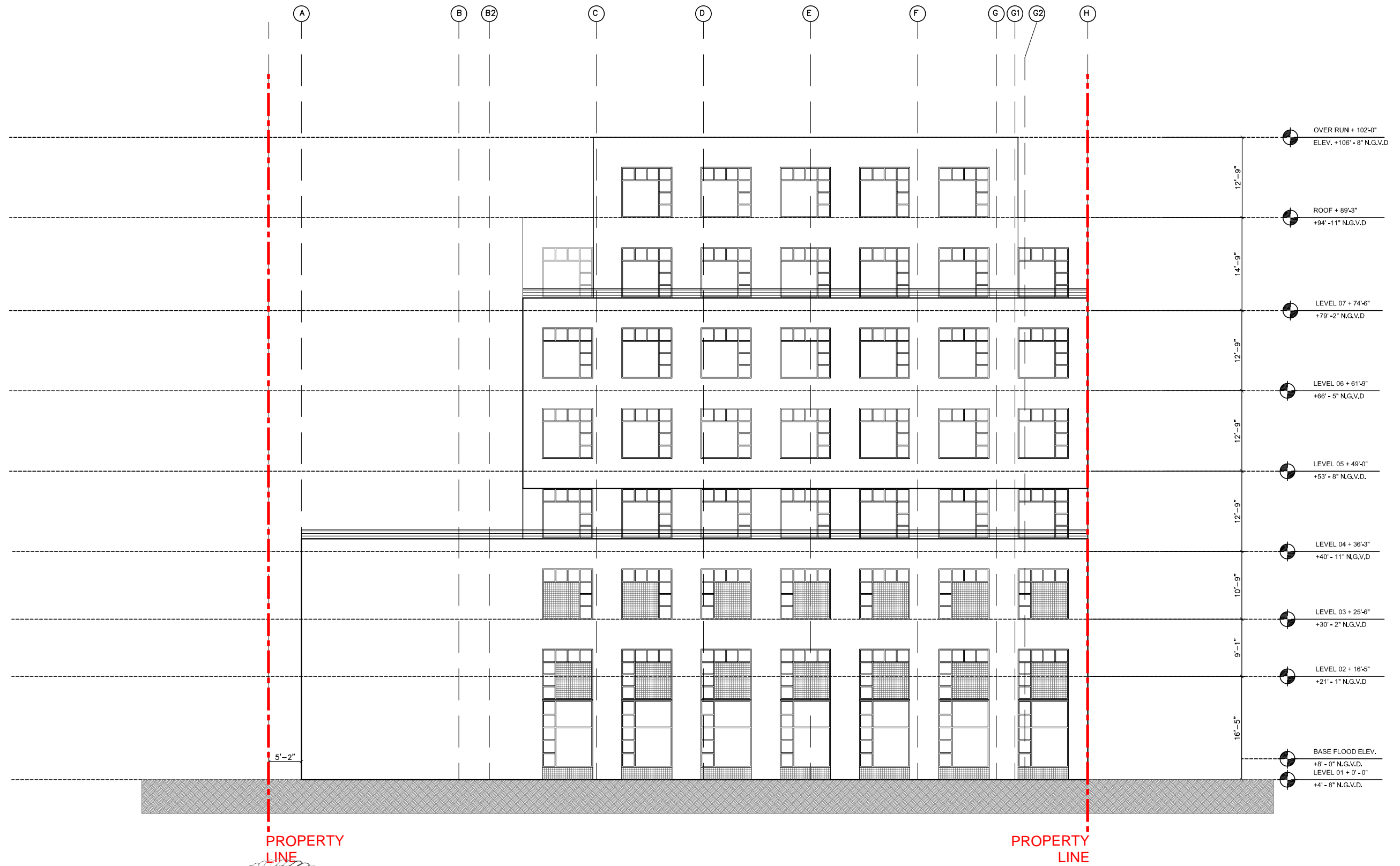


A 0.23
 SCALE: 1/16" = 1'-0"

EXISTING BUILDING ELEVATION - EAST

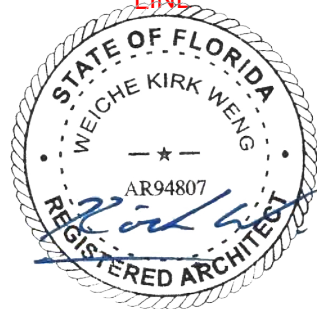


119 WASHINGTON AVE



KIRK WENG ARCHITECTS

7901 LUDLAM ROAD, SUITE 205
 MIAMI, FLORIDA 33143
 info@kirkweng.com
 +1.305.851.3351



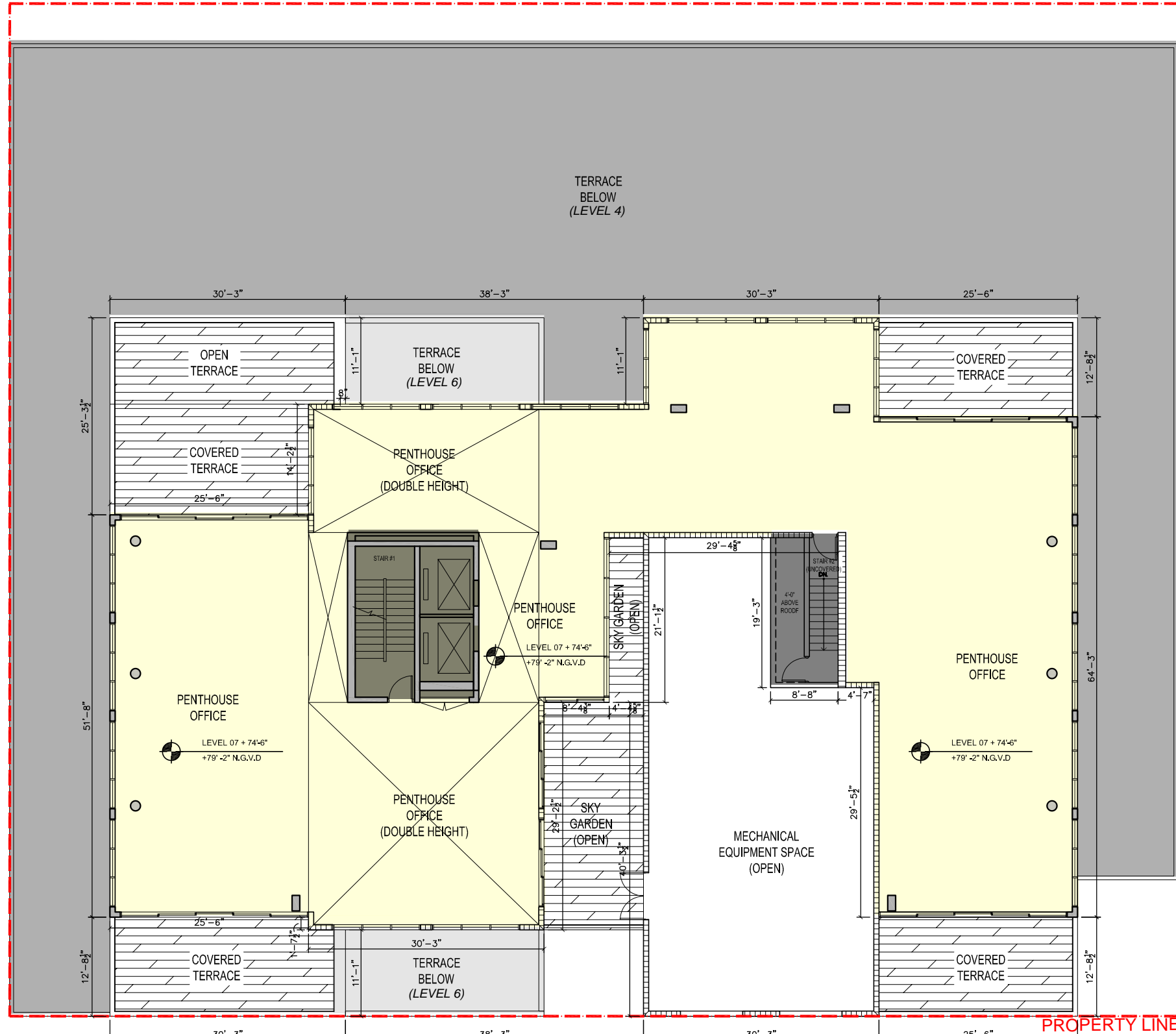
A 0.24
 SCALE: 1/16" = 1'-0"

EXISTING BUILDING ELEVATION - NORTH



119 WASHINGTON AVE

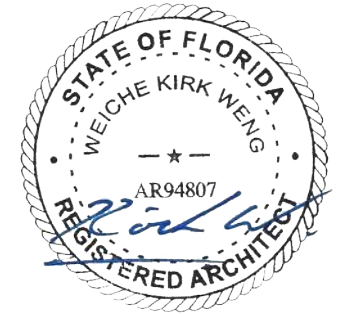
PROPERTY LINE



PROPOSED LEVEL 7 / PH OFFICE PLAN (6,475 SF)

KIRK WENG ARCHITECTS

7901 LUDLAM ROAD, SUITE 205
MIAMI, FLORIDA 33143
info@kirkweng.com
+1.305.851.3351

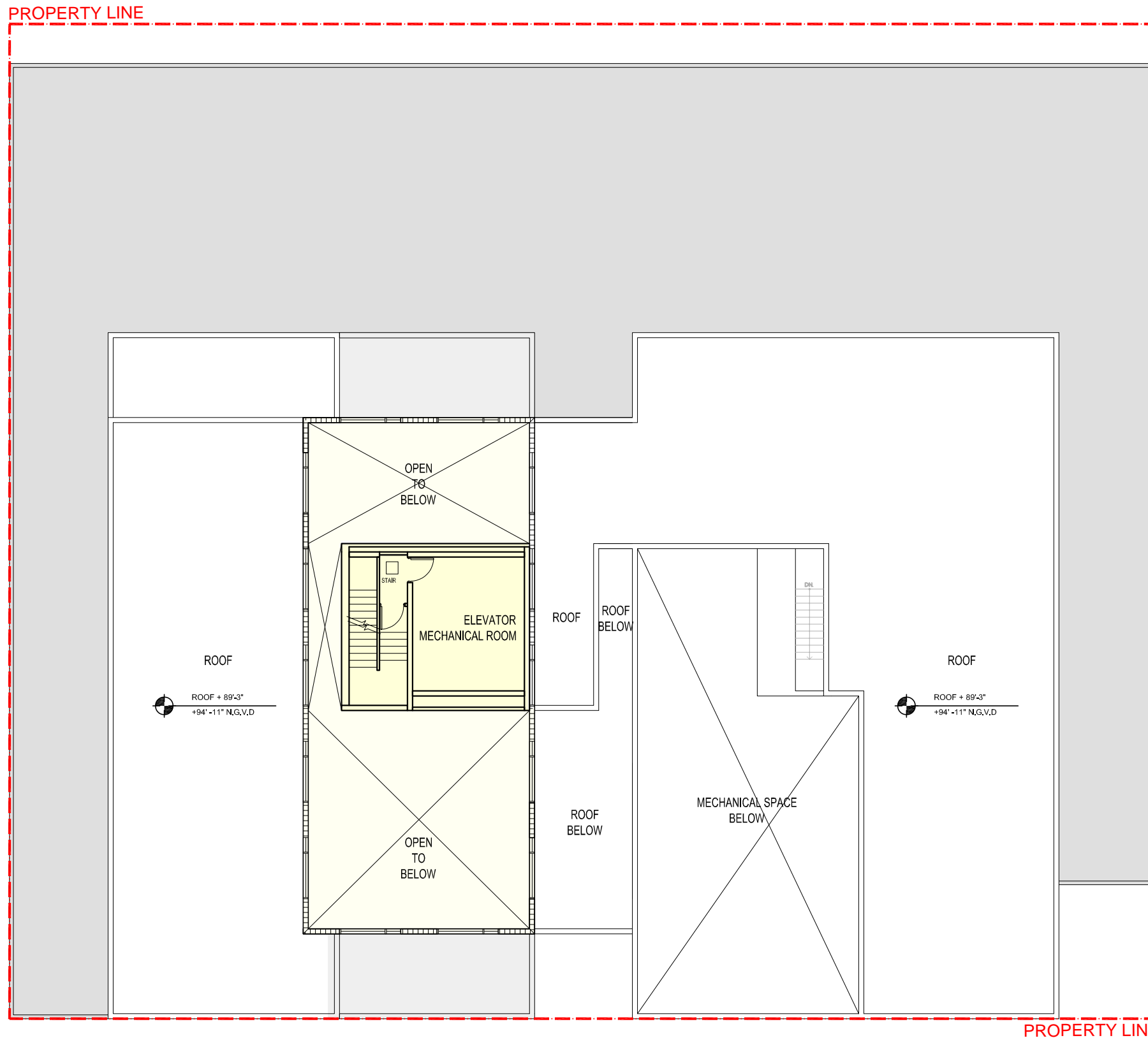


A 1.01
SCALE: 1/16" = 1'-0"

PROPOSED LEVEL 7 / PH PLAN



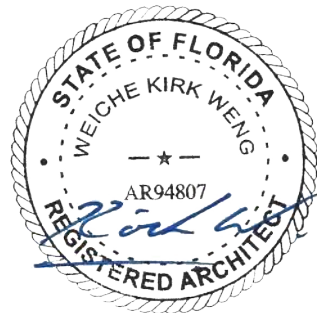
119 WASHINGTON AVE



PROPOSED LEVEL 8 / LOWER ROOF PLAN

KIRK WENG ARCHITECTS

7901 LUDLAM ROAD, SUITE 205
 MIAMI, FLORIDA 33143
 info@kirkweng.com
 +1.305.851.3351

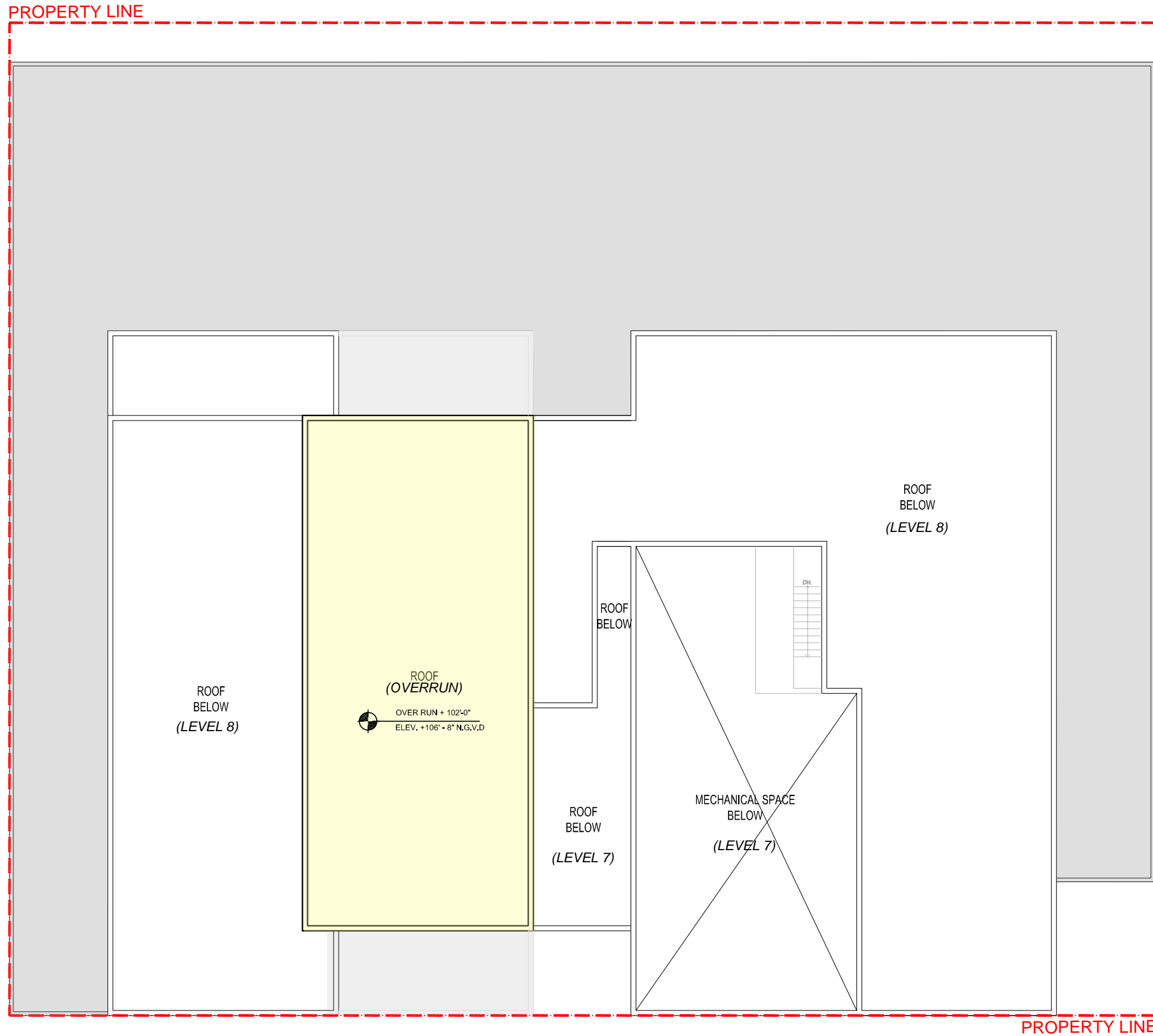


A 1.02
 SCALE: 1/16" = 1'-0"

PROPOSED LEVEL 8 / LOWER ROOF PLAN



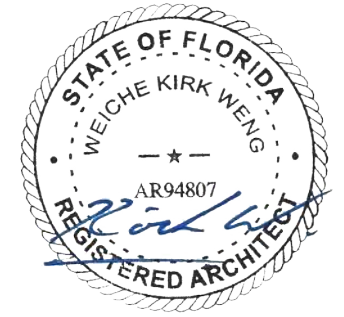
119 WASHINGTON AVE



ROOF OVERRUN

KIRK WENG ARCHITECTS

7901 LUDLAM ROAD, SUITE 205
MIAMI, FLORIDA 33143
info@kirkweng.com
+1.305.851.3351



A 1.03

SCALE: 1/16" = 1'-0"

ROOF OVERRUN



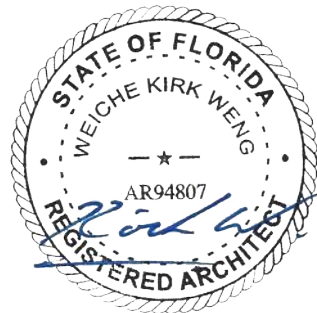
119 WASHINGTON AVE

PROPOSED BUILDING ELEVATION - WEST



KIRK WENG ARCHITECTS

7901 LUDLAM ROAD, SUITE 205
 MIAMI, FLORIDA 33143
 info@kirkweng.com
 +1.305.851.3351



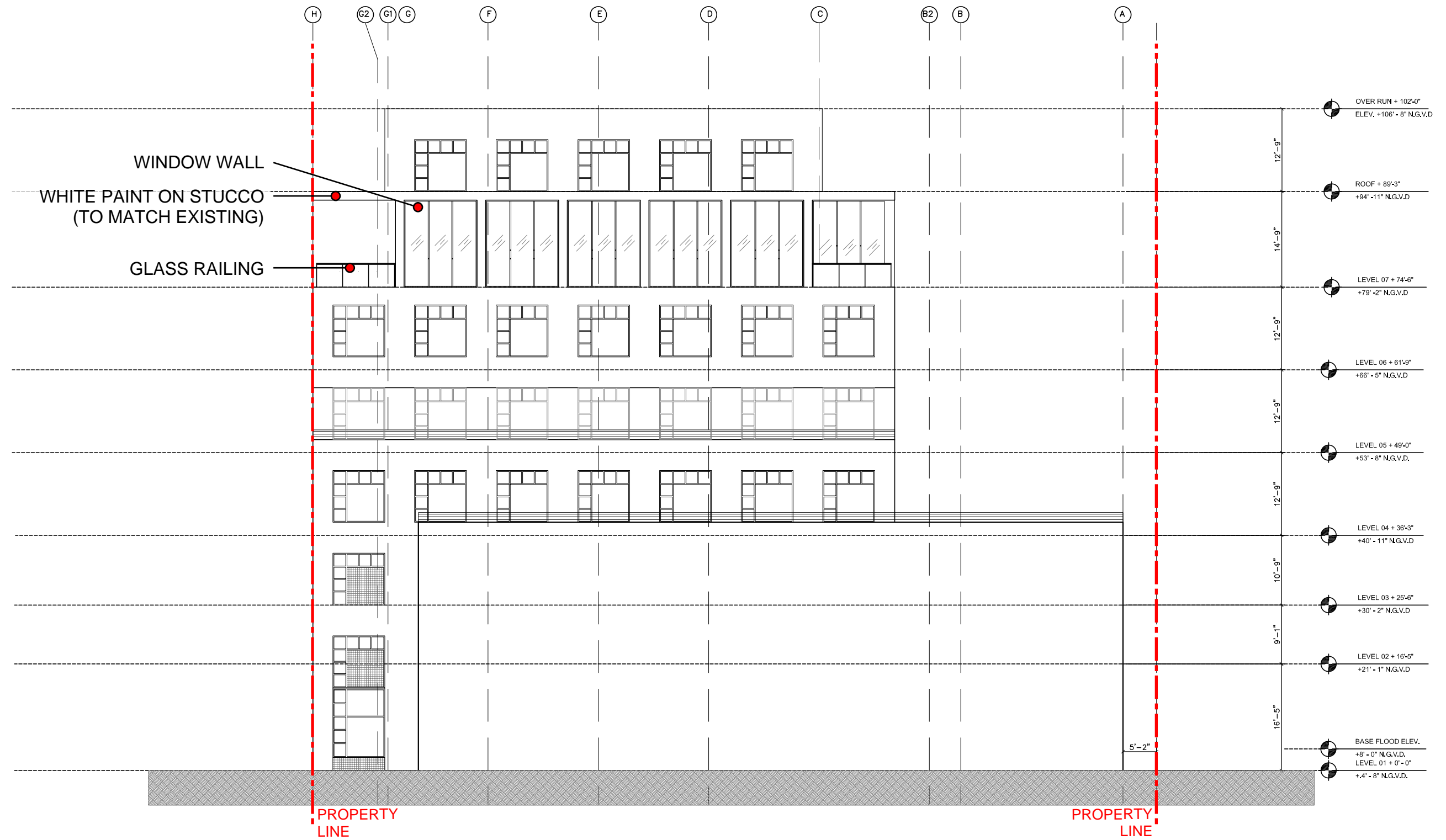
A 2.01
 SCALE: 1/16" = 1'-0"

PROPOSED BUILDING ELEVATION - WEST



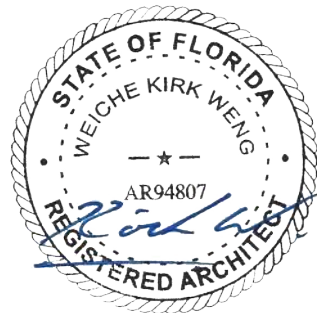
119 WASHINGTON AVE

PROPOSED BUILDING ELEVATION - SOUTH



KIRK WENG ARCHITECTS

7901 LUDLAM ROAD, SUITE 205
 MIAMI, FLORIDA 33143
 info@kirkweng.com
 +1.305.851.3351



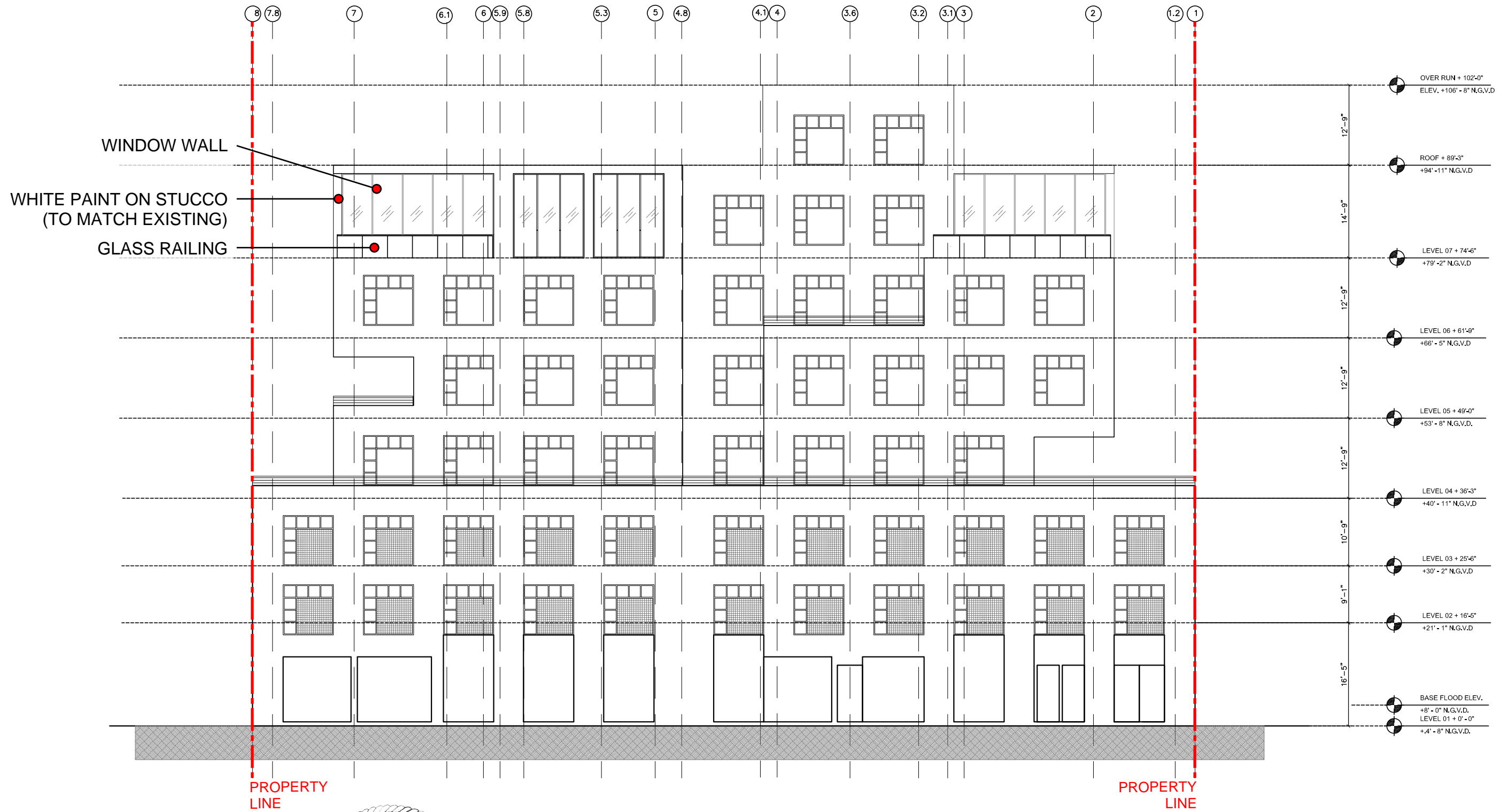
A 2.02
 SCALE: 1/16" = 1'-0"

PROPOSED BUILDING ELEVATION - SOUTH



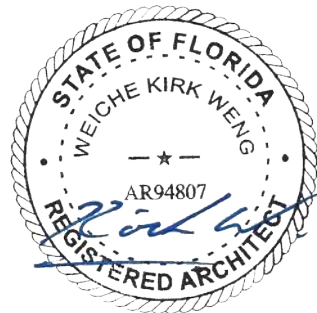
119 WASHINGTON AVE

PROPOSED BUILDING ELEVATION - EAST



KIRK WENG ARCHITECTS

7901 LUDLAM ROAD, SUITE 205
 MIAMI, FLORIDA 33143
 info@kirkweng.com
 +1.305.851.3351



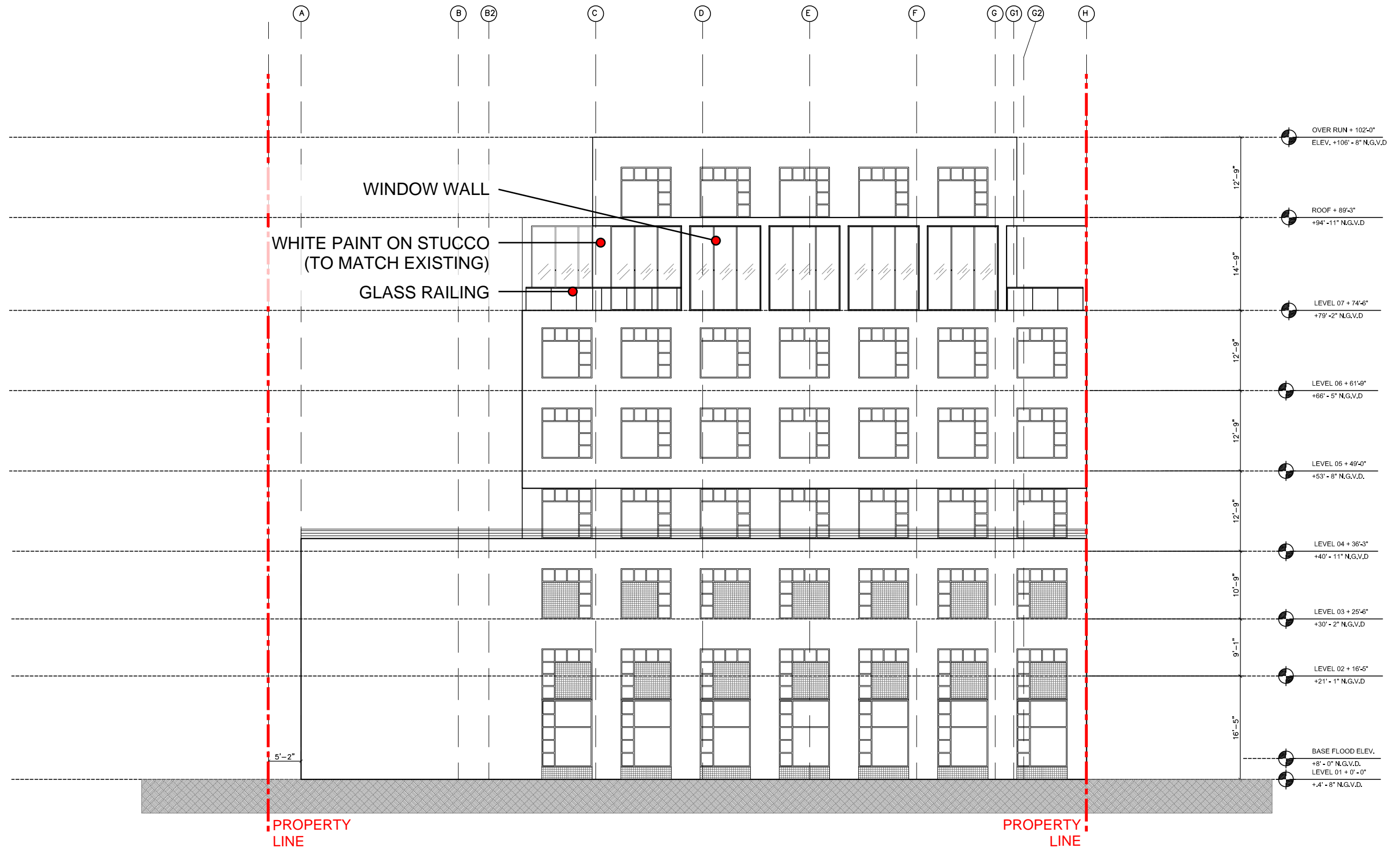
A 2.03
 SCALE: 1/16" = 1'-0"

PROPOSED BUILDING ELEVATION - EAST



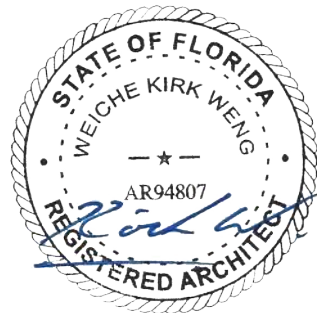
119 WASHINGTON AVE

PROPOSED BUILDING ELEVATION - NORTH



KIRK WENG ARCHITECTS

7901 LUDLAM ROAD, SUITE 205
 MIAMI, FLORIDA 33143
 info@kirkweng.com
 +1.305.851.3351



A 2.04
 SCALE: 1/16" = 1'-0"

PROPOSED BUILDING ELEVATION - NORTH



119 WASHINGTON AVE

NEW STRUCTURE

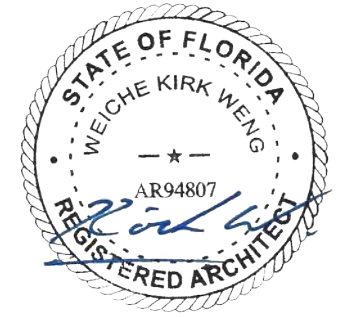
EXISTING STRUCTURE

1 1.2 2 3 3.1 3.2 3.6 4 4.1 4.8 5 5.3 5.8 5.9 6 6.1 6.2 7 7.8 8



KIRK WENG ARCHITECTS

7901 LUDLAM ROAD, SUITE 205
MIAMI, FLORIDA 33143
info@kirkweng.com
+1.305.851.3351



A 3.01
SCALE: 1/16" = 1'-0"

PROPOSED BUILDING SECTION

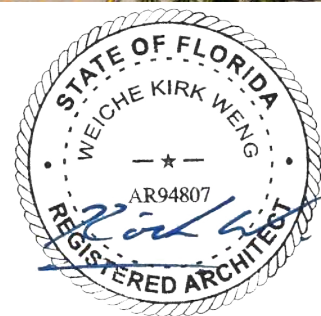


119 WASHINGTON AVE



KIRK WENG ARCHITECTS

7901 LUDLAM ROAD, SUITE 205
MIAMI, FLORIDA 33143
info@kirkweng.com
+1.305.851.3351



A 4.01

PERSPECTIVE

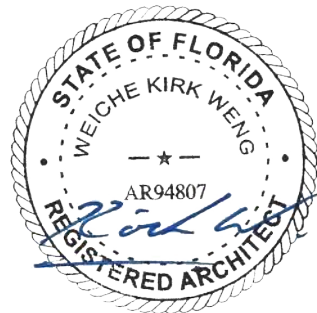


119 WASHINGTON AVE



KIRK WENG ARCHITECTS

7901 LUDLAM ROAD, SUITE 205
MIAMI, FLORIDA 33143
info@kirkweng.com
+1.305.851.3351



A 4.02

PERSPECTIVE

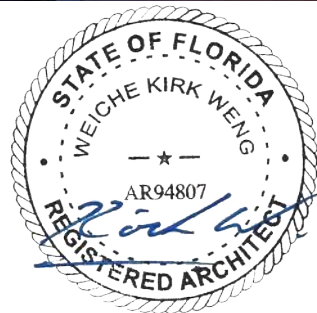


119 WASHINGTON AVE



KIRK WENG ARCHITECTS

7901 LUDLAM ROAD, SUITE 205
MIAMI, FLORIDA 33143
info@kirkweng.com
+1.305.851.3351



A 4.03

PERSPECTIVE

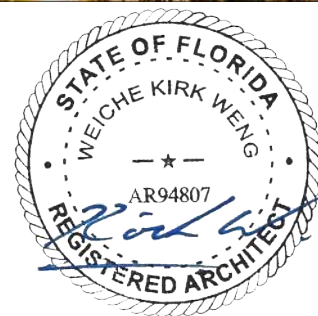


119 WASHINGTON AVE



KIRK WENG ARCHITECTS

7901 LUDLAM ROAD, SUITE 205
MIAMI, FLORIDA 33143
info@kirkweng.com
+1.305.851.3351



A 4.04

PERSPECTIVE

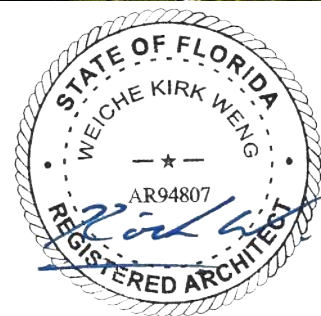


119 WASHINGTON AVE



KIRK WENG ARCHITECTS

7901 LUDLAM ROAD, SUITE 205
MIAMI, FLORIDA 33143
info@kirkweng.com
+1.305.851.3351



A 4.05

PERSPECTIVE

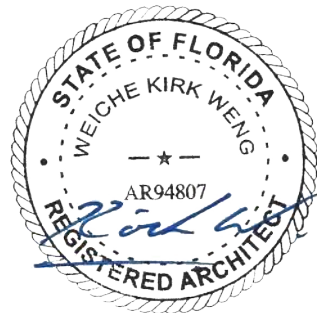


119 WASHINGTON AVE



KIRK WENG ARCHITECTS

7901 LUDLAM ROAD, SUITE 205
MIAMI, FLORIDA 33143
info@kirkweng.com
+1.305.851.3351

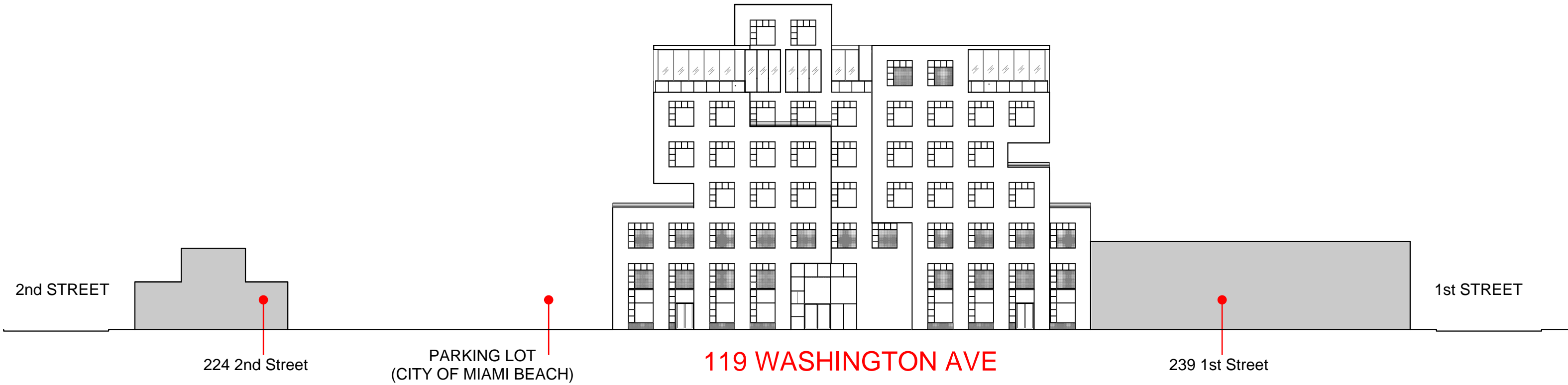


A 4.06

INTERIOR PERSPECTIVE

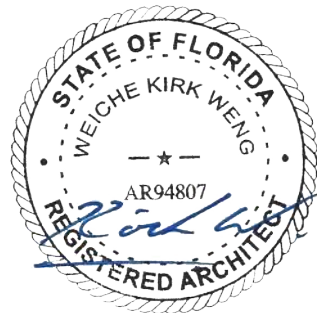


119 WASHINGTON AVE



KIRK WENG ARCHITECTS

7901 LUDLAM ROAD, SUITE 205
MIAMI, FLORIDA 33143
info@kirkweng.com
+1.305.851.3351



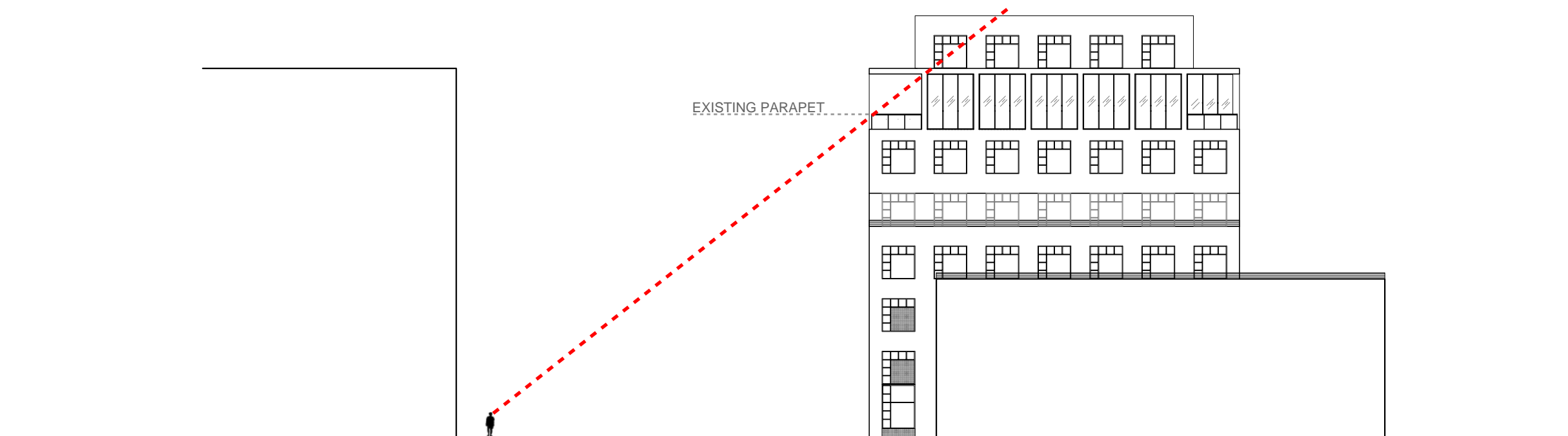
A 5.01

SCALE: 1" = 30'-0"
DATE: APRIL 2023

CONTEXTUAL ELEVATION LINE DRAWING



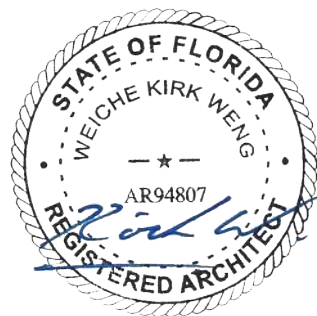
119 WASHINGTON AVE



119 WASHINGTON AVE

KIRK WENG ARCHITECTS

7901 LUDLAM ROAD, SUITE 205
MIAMI, FLORIDA 33143
info@kirkweng.com
+1.305.851.3351



A 5.02

SCALE: 1" = 30'-0"
DATE: APRIL 2023

LINE OF SIGHT STUDY



119 WASHINGTON AVE