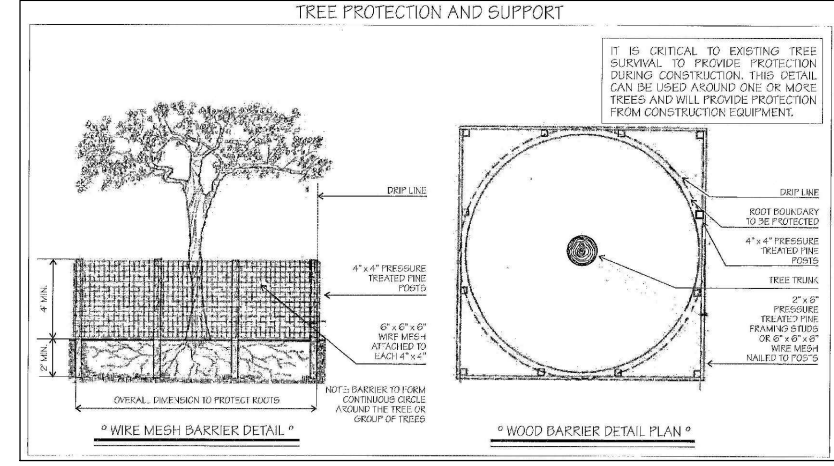
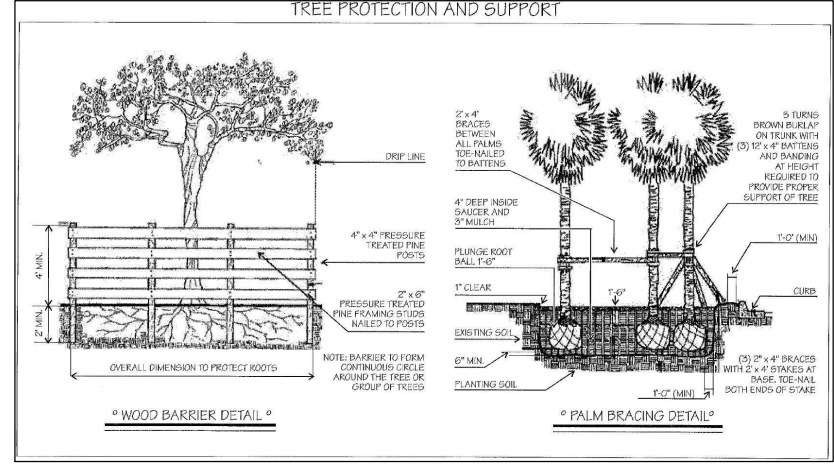


TREE DISPOSITION PLAN
Scale: 1/16" = 1'-0"



EX. TREE SYMBOLS



EXISTING PLANT LIST

Tree #	Botanical Name	Common Name	DBH in inches	OAH in feet	Spread in feet (per trunk for palms)	TPZ in feet (radius)	Disposition	Notes/Condition
1	<i>Ptychosperma elegans</i>	Solitaire palm	3	16-18	8-10	2	Remove	Fair condition
2	<i>Ptychosperma elegans</i>	Solitaire palm	3	16-18	8-10	2	Remove	Fair condition
3	<i>Ptychosperma elegans</i>	Solitaire palm	3	12-14	8-10	2	Remove	Fair condition
4	<i>Ptychosperma elegans</i>	Solitaire palm	3	12-14	8-10	2	Remove	Fair condition
5	<i>Adonidia merrillii</i>	Christmas palm	5	16-18	12-14	3	Remain	
6	<i>Adonidia merrillii</i>	Christmas palm	5	25-30	12-14	3	Remain	
7	<i>Adonidia merrillii</i>	Christmas palm	5	25-30	12-14	3	Remain	
8	<i>Adonidia merrillii</i>	Christmas palm	5	25-30	12-14	3	Remain	
9	<i>Adonidia merrillii</i>	Christmas palm	5	18-20	12-14	3	Remove	
10	<i>Sabal palmetto</i>	Sabal palm	13	16-18	14-16	3	Remove	
11	<i>Adonidia merrillii</i>	Christmas palm	6	14-16	12-14	3	Remove	
12	<i>Phoenix roebelenii</i>	Dwarf date palm	5	12-14	10-12	3	Remove	
13	<i>Adonidia merrillii</i>	Christmas palm	12	18-20	8-10	3	Remove	Double trunk. DBH 6" per trunk
14	<i>Strelitzia nicotai</i>	White Bird of Paradise	4	10-12	10-12	3	Remove	Poor condition. Double trunk. DBH 2" per trunk



LANDSCAPE ARCHITECT
FL R.L.A.L.C. #667191
900 BISCAYNE BLVD
MIAMI, FL 33132
P: 786.346.8909
www.VincentFiligenzi.com

PROFESSIONAL SEAL:
Vincent Filigenzi
Digitally signed by Vincent Filigenzi
Date: 2024.07.02 16:50:22 -04'00'
VINCENT A. FILIGENZI
LA #6667191

NOTE:
These architectural drawings and plans are the property of Vincent Filigenzi, VFD INC. These drawings and plans shall not be reproduced for use by any individual or entity or any other project without the written permission.

LENOX AVENUE
Landscape Design
1525 Lenox Avenue
Miami Beach, FL 33139

SHEET ISSUE:

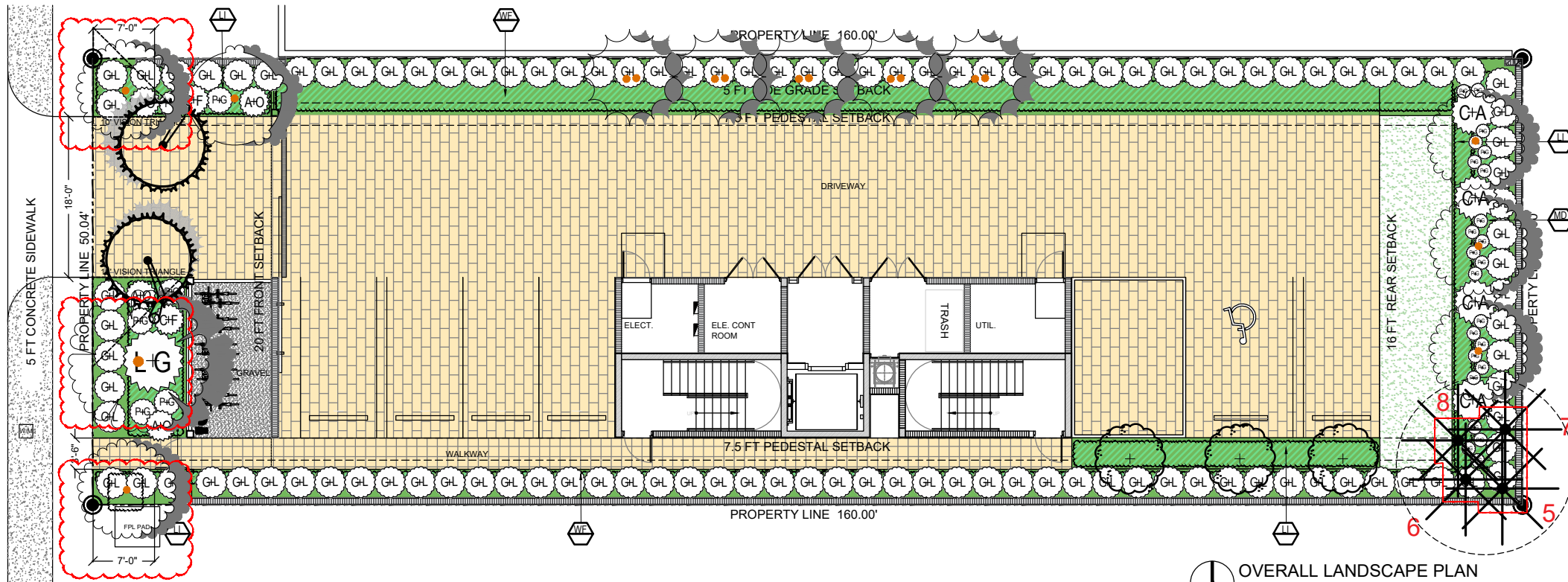
REV #	DATE	DESCRIPTION
1	04.27.2024	LANDSCAPE REVIEW

DRAWN BY: JP
CHECKED BY: VF
DATE: 07.01.2024

DISCIPLINE / SHEET TITLE:
TREE DISPOSITION PLAN

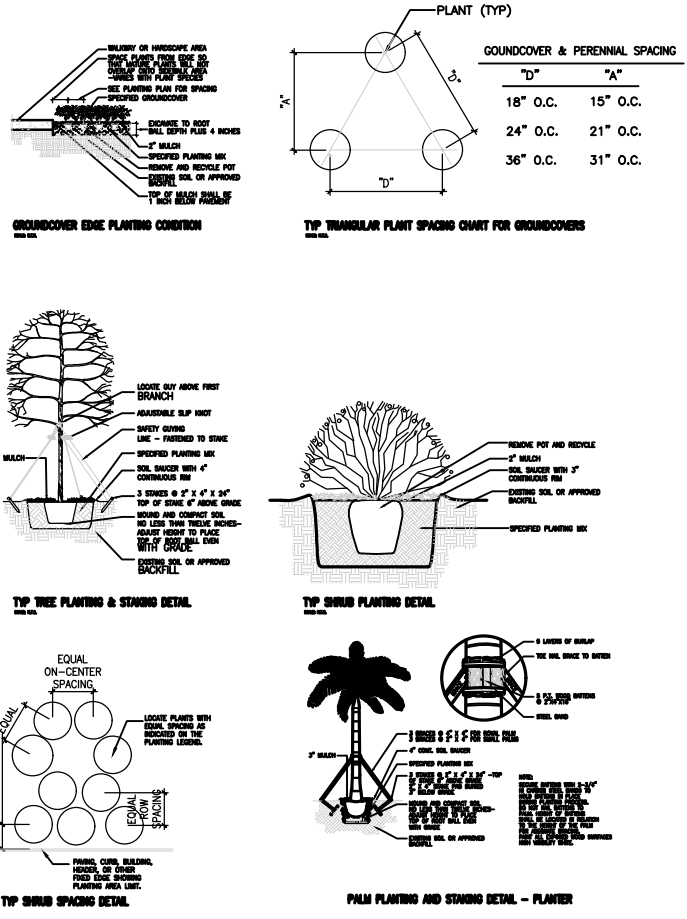
SHEET NUMBER:
LD-1.0

LENOX AVE

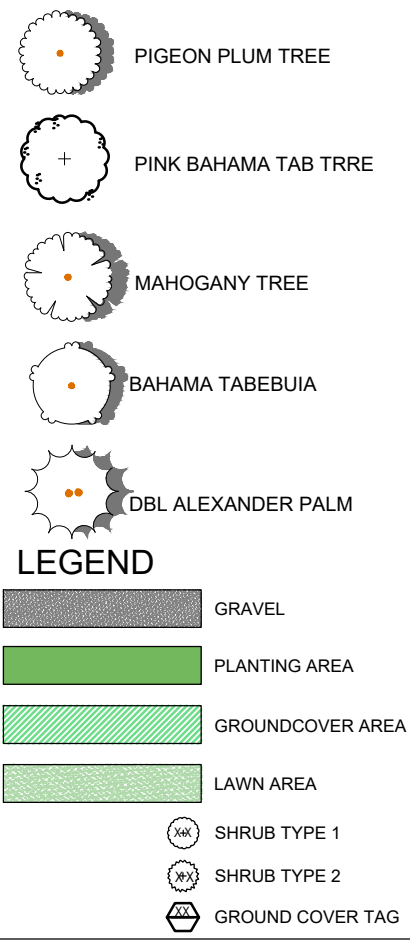


OVERALL LANDSCAPE PLAN
Scale: 1/16" = 1'-0"

LANDSCAPE DETAILS



PROPOSED PLANTING SYMBOLS



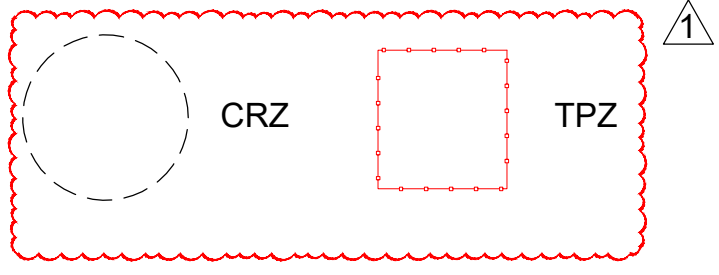
PROPOSED PLANT LIST						
SYM	BOTANICAL NAME	COMMON NAME	SPEC	NATIVE	DROUGHT	QTY
TREES + PALMS						
PL	<i>Swietenia mahagoni</i>	Mahogany Tree (1 street tree 7' within PL)	FG 22'-24' HT 10'-12" DBH 4'-6" OA	*	*	1
PL	<i>Coccoloba diversifolia</i>	Pigeon Plum Tree (1 street tree 7' within PL)	10'-12' HT 2'-3" DBH	*	*	1
PL	<i>Coccoloba diversifolia</i>	Pigeon Plum Tree (2 street trees 7' within PL)	10'-12' HT 2'-3" DBH	*	*	2
PL	<i>Hydrocaryum elegans</i>	Alexander Palm DBL	14-16 HT	*	*	2
PL	<i>Tabebuia heterophylla</i>	Pink Tabebuia Tree	12' HT 2'-3" DBH	*	*	3
PL	<i>Sabal palmetto</i>	Leaning Cabbage Palm	26'-28' CT C BL CURVE	*	*	2
PL	<i>Tabebuia bahamensis</i>	Bahama Tabebuia Tree	14'-16' OA 4'-6" DBH	*	*	1
SHRUBS + ACENTS						
AO	<i>Alcantarea odorata</i>	Silver odorata bromeliad	20" X 20"			4
CA	<i>Critinum asiaticum</i>	crinum lily	25G			4
CF	<i>Cordyline fruticosa</i>	Black Magic	15G			2
PG	<i>Philodendron gloriosum</i>	Philodendron	7G			6
PG	<i>Philodendron gloriosum</i>	Philodendron	3G			24
LG	<i>Licuala grandis</i>	Ruffled Fan Palm	45G			1
GL	<i>Gymnanthes lucida</i>	Crabwood Hedge	25 G 5'-6" HT	*	*	112
GROUNDCOVERS						
LM	<i>Liriope muscari</i>	Lilyturf	3 GAL @ 18" OC			251
WF	<i>Microsorum scolopendria</i>	Wart Fern	1 GAL @ 24" OC	*	*	233
MD	<i>Monarda deliciosa</i>	Swiss C cheese Plant	7 GAL @ 36" OC	*	*	57
	Top Soil	50/50 Mix 5'-6" Deep				
	Empire Zoysia	Empire Zoysia				318 sq ft

CITY OF MIAMI BEACH LAND SCAPE LEGEND
Zoning District: RM-1 Lot Area: 8,000 Sqft Acres: 0.184

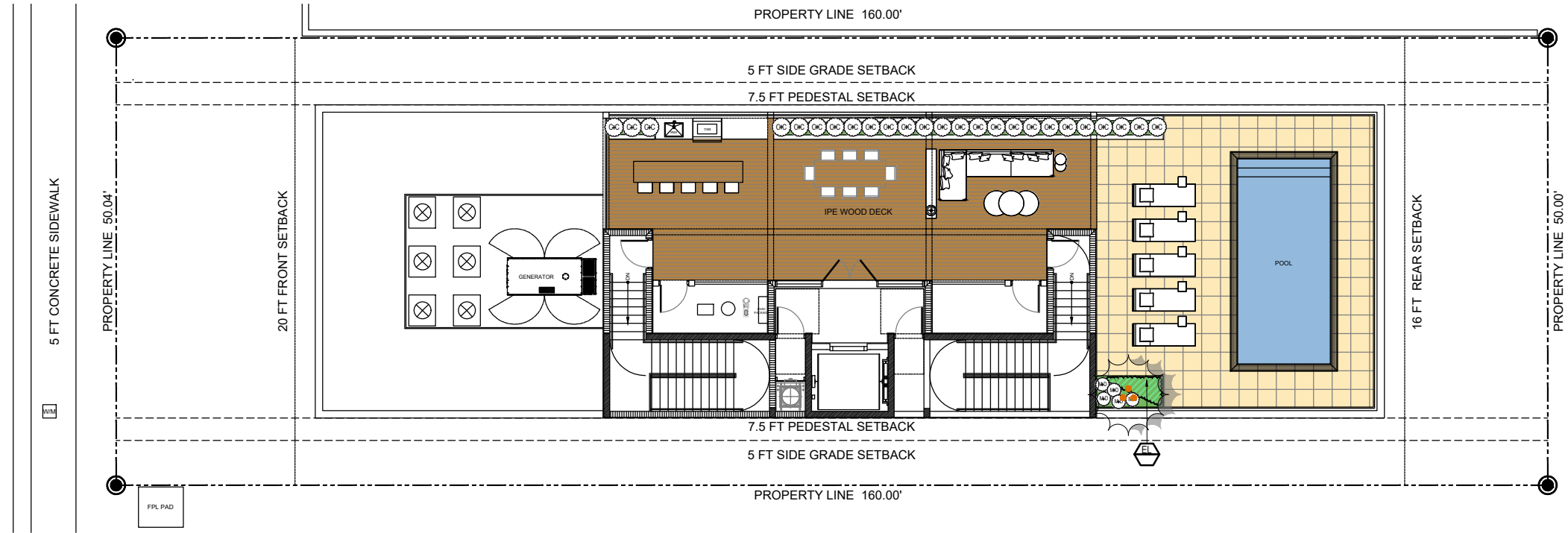
TREES	Required/ Allowed
A. Number of trees required per lot or net lot acre, less existing number of trees meeting minimum requirements: 28 trees x 0.184 net lot acres - number of existing trees (0) = 28*0.184	5 8
B. % Natives required: Number of trees provided x 30% = 8*3	2 4
C. % Low maintenance / drought and salt tolerant required: Number of trees provided x 50% = 8*5	4 8
D. Street Trees (maximum average spacing of 20' o.c.): 50 linear feet along street divided by 20' = 30/20	3 3
E. Street tree species allowed directly beneath power lines: (maximum average spacing of 20' o.c.): linear feet along street divided by 20'	N/A N/A
SHRUBS	
A. Number of shrubs required: Sum of lot and street trees required x 12 = 8*12	96 153
B. % Native shrubs required: Number of shrubs provided x 30% = 153*3	77 114
LARGE SHRUBS OR SMALL TREES	
A. Number of large shrubs or small trees required: Number of required shrubs x 10% = 96*1	10 10
B. % Native large shrubs or small trees required: Number of large shrubs or small trees provided x 50% = 8*5	4 4

GENERAL NOTES

- EXISTING TREES DESIGNATED TO REMAIN SHALL BE PROTECTED DURING ALL CONSTRUCTION PHASES. ANY TREES OR SHRUBS SCARRED OR DESTROYED DESIGNATED TO REMAIN WILL BE REPLACED AT THE CONTRACTOR'S EXPENSE, WITH SIMILAR SPECIES, SIZE AND QUALITY.
- LANDSCAPE CONTRACTOR SHALL CONTACT THE CITY AND/OR UTILITY COMPANIES TO LOCATE ALL UNDERGROUND UTILITIES OR STRUCTURES PRIOR TO DIGGING. LANDSCAPE CONTRACTOR SHALL REPAIR ALL DAMAGE TO UNDERGROUND UTILITIES, AND/OR CONSTRUCTION CAUSED BY UTILITY DAMAGE, AT NO COST TO THE OWNER.
- ALL PLANT MATERIALS SHALL BE GUARANTEED FOR A PERIOD OF 12 MONTHS AFTER DATE OF SUBSTANTIAL COMPLETION.
- LANDSCAPE CONTRACTOR SHALL VERIFY ALL ESTIMATED QUANTITIES OF MATERIAL SHOWN ON THE DRAWINGS PRIOR TO SUBMITTING HIS BID. PLANTING PLAN TO TAKE PRECEDENCE OVER PLANT LIST.
- ALL AREAS DISTURBED DURING CONSTRUCTION SHALL BE SOD UNLESS OTHERWISE NOTED.
- EXISTING PLANT MATERIAL NOT SHOWN ON THE PLAN AND IN CONFLICT WITH NEW PLANTING SHALL BE EVALUATED AT THE TIME OF NEW PLANTING INSTALLATION BY THE LANDSCAPE ARCHITECT.
- ALL BUILDING CONSTRUCTION MATERIAL AND FOREIGN MATERIAL SHALL BE REMOVED FROM PLANTING AREAS AND REPLACED WITH 80/20 MIX FILL SOIL, OR AS PER SPECIFICATIONS.
- ALL PLANT MATERIAL SYMBOLS SHOWN ON LANDSCAPE PLAN SHALL BE CONSIDERED DIAGRAMMATIC AND SHOULD BE ADJUSTED IN THE FIELD BY CONTRACTOR TO AVOID ALL UTILITIES, AND ALL OTHER OBSTRUCTIONS.
- ALL SIZES SHOWN FOR PLANT MATERIAL ON THE PLAN ARE TO BE CONSIDERED MINIMUM. ALL PLANT MATERIAL MUST MEET OR EXCEED THESE MINIMUM REQUIREMENTS FOR BOTH HEIGHT AND SPREAD. ANY OTHER REQUIREMENTS FOR SPECIFIC SHAPE OR EFFECT AS NOTED ON THE PLAN SHALL ALSO BE REQUIRED FOR ACCEPTANCE. ALL TREES TO BE SINGLE TRUNKED, UNLESS OTHERWISE NOTED ON THE PLANS.
- ALL TREES TO BE RELOCATED SHALL BE ROOT PRUNED 60 DAYS PRIOR TO THEIR RELOCATION.
- TREES TO BE TRANSPLANTED ARE TO BE FLOODED FOR FIVE DAYS PRIOR TO RELOCATION.
- SITE PREPARATION SHALL INCLUDE THE ERADICATION AND REMOVAL OF ANY WEEDS, GRASS, CLEAN-UP OF ANY DEAD MATERIAL AND FINISH GRADING AS PER THE SPECS.
- THE LANDSCAPE CONTRACTOR SHALL AT ALL TIMES KEEP THE JOB SITE CLEAN AND FREE FROM ACCUMULATION OF WASTE MATERIAL, DEBRIS, AND RUBBISH.
- THE LANDSCAPE CONTRACTOR SHALL EXERCISE CAUTION TO PROTECT ALL EXISTING SOD AND IRRIGATION. ANY DAMAGE TO THE SOD OR IRRIGATION SHALL BE REPLACED OR REPAIRED TO THE ORIGINAL STATE BY THE LANDSCAPE CONTRACTOR AT NO ADDITIONAL COST TO THE OWNER.



LENOX AVE



ROOF LEVEL LANDSCAPE PLAN
Scale: 1/16" = 1'-0"

PROPOSED PLANTING SYMBOLS



SYM	BOTANICAL NAME	COMMON NAME	SPEC	NATIVE	DROUGHT	QTY
TREES + PALMS						
	<i>Thrinax radiata</i>	Thatch Palm	10'-12' HT TRIPLE	*		1
SHRUBS + ACENTS						
CC	<i>Capparis cynophallophora</i>	Jamaican Caper	25G			25
MD	<i>Monstera deliciosa</i>	Swiss Cheese Plant	7 GAL @ 36" OC			5
GROUNDCOVERS						
EL	<i>Ernodea littoralis</i>	Golden Creeper	1 GAL @ 18" OC	*		11



LANDSCAPE ARCHITECT
FL R.L.A.L.C. #667191
900 BISCAYNE BLVD
MIAMI, FL 33132
P: 786.346.8909
www.VincerFiligenzi.com

PROFESSIONAL SEAL:



NOTE:
These architectural drawings and plans are the property of VFD INC. These drawings and plans shall not be reproduced for use by any individual or entity or any other project without the express written permission.

LENOX AVENUE
Landscape Design
1525 Lenox Avenue
Miami Beach, FL 33139

SHEET ISSUE:

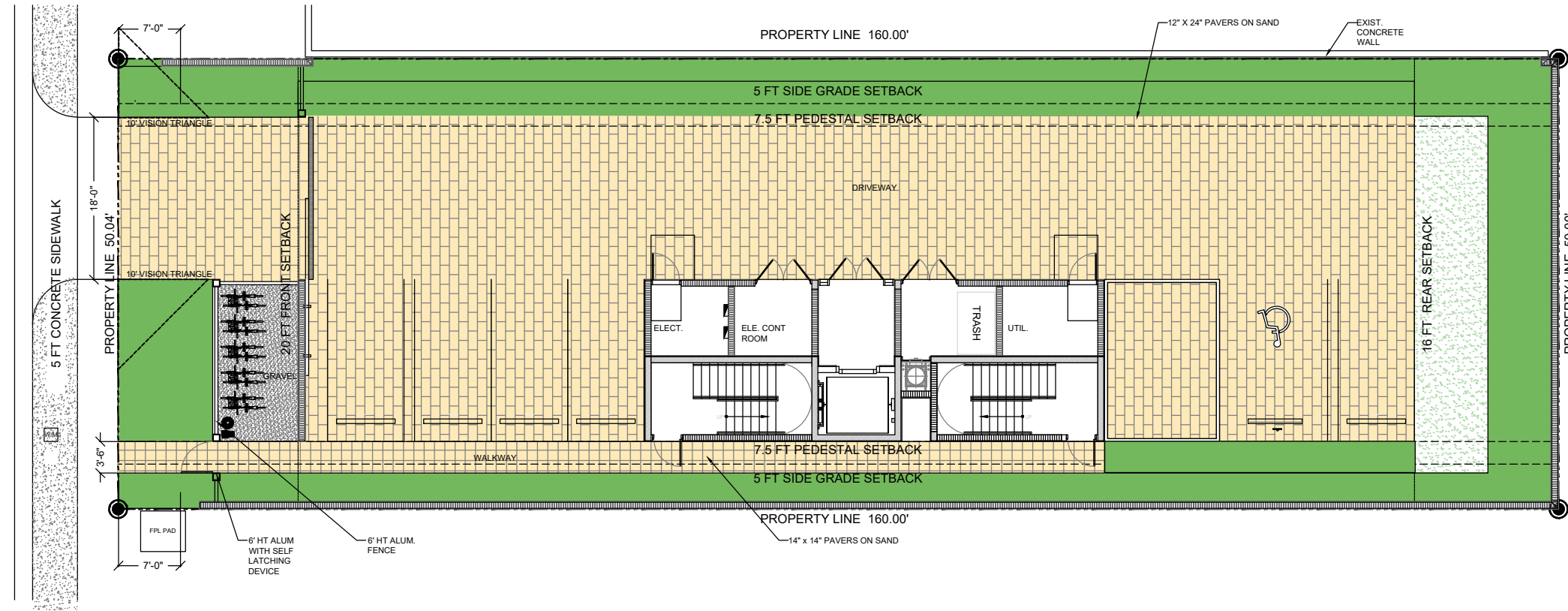
REV #	DATE	DESCRIPTION

DRAWN BY: JP
CHECKED BY: VF
DATE: 04.22.2024

DISCIPLINE / SHEET TITLE:
ROOF LEVEL
LANDSCAPE
PLAN

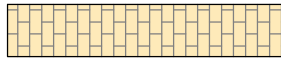
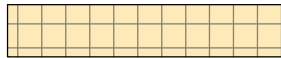



SHEET NUMBER:
LP-1.1

LENOX AVE



GROUND LEVEL HARDSCAPE PLAN
Scale: 1/16" = 1'-0"

HARDSCAPE MATERIALS

-  DRIVEWAY
-  WALKWAY
-  GENERAL PLANTING AREA
-  PALMETTO LAWN
-  GRAVEL

HARDSCAPE MATERIALS IMAGES



12" x 24" x 2.6" TRAVERTINE PAVERS ON SAND



14" x 14" x 2.6" TRAVERTINE PAVERS ON SAND



LANDSCAPE ARCHITECT
FL R.L.A.L.C. #667191
900 BISCAYNE BLVD
MIAMI, FL 33132
P: 786.346.8909
www.VincentFiligenzi.com

PROFESSIONAL SEAL:



NOTE:
These architectural drawings and plans are the property of VFD INC. These drawings and plans shall not be reproduced for use by any individual or entity or any other project without the written permission.

LENOX AVENUE
Landscape Design
1525 Lenox Avenue
Miami Beach, FL 33139

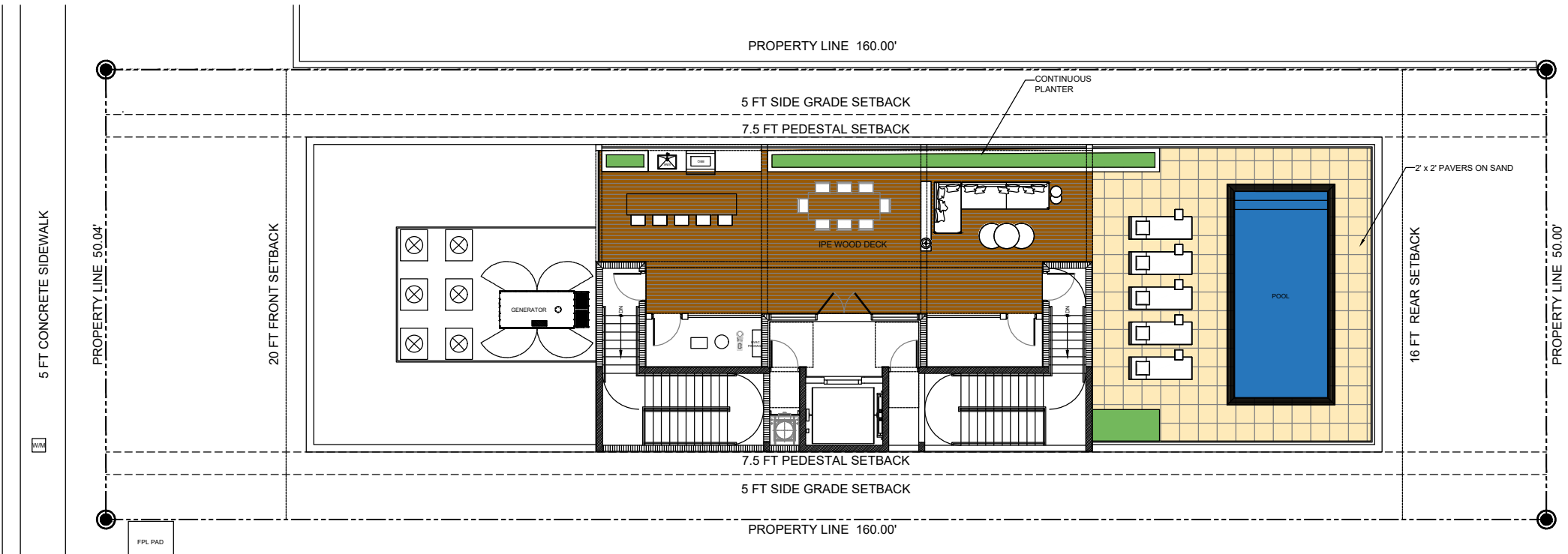
REV #	DATE	DESCRIPTION

DRAWN BY: JP
CHECKED BY: VF
DATE: 04.22.2024

DISCIPLINE / SHEET TITLE:
GROUND LEVEL HARDSCAPE PLAN

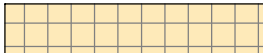

SHEET NUMBER:
LH-1.0

LENOX AVE



ROOF LEVEL HARDSCAPE PLAN
Scale: 1/16" = 1'-0"

HARDSCAPE MATERIALS

-  POOL DECK
-  IPE WOOD DECK ON SLEEPERS FASTENED TO CONCRET SLAB

HARDSCAPE MATERIALS IMAGES



2' x 2' TRAVERTINE PAVERS ON SAND



LANDSCAPE ARCHITECT
FL RLA LIC #6667191
900 BISCAYNE BLVD
MIAMI, FL 33132
P: 786.346.8909
www.VincerFiligenzi.com

PROFESSIONAL SEAL:



NOTE:
These architectural drawings and plans are the property of VFD INC. These drawings and plans shall not be reproduced for use by any individual or entity or any other project without the written permission.

LENOX AVENUE
Landscape Design
1525 Lenox Avenue
Miami Beach, FL 33139

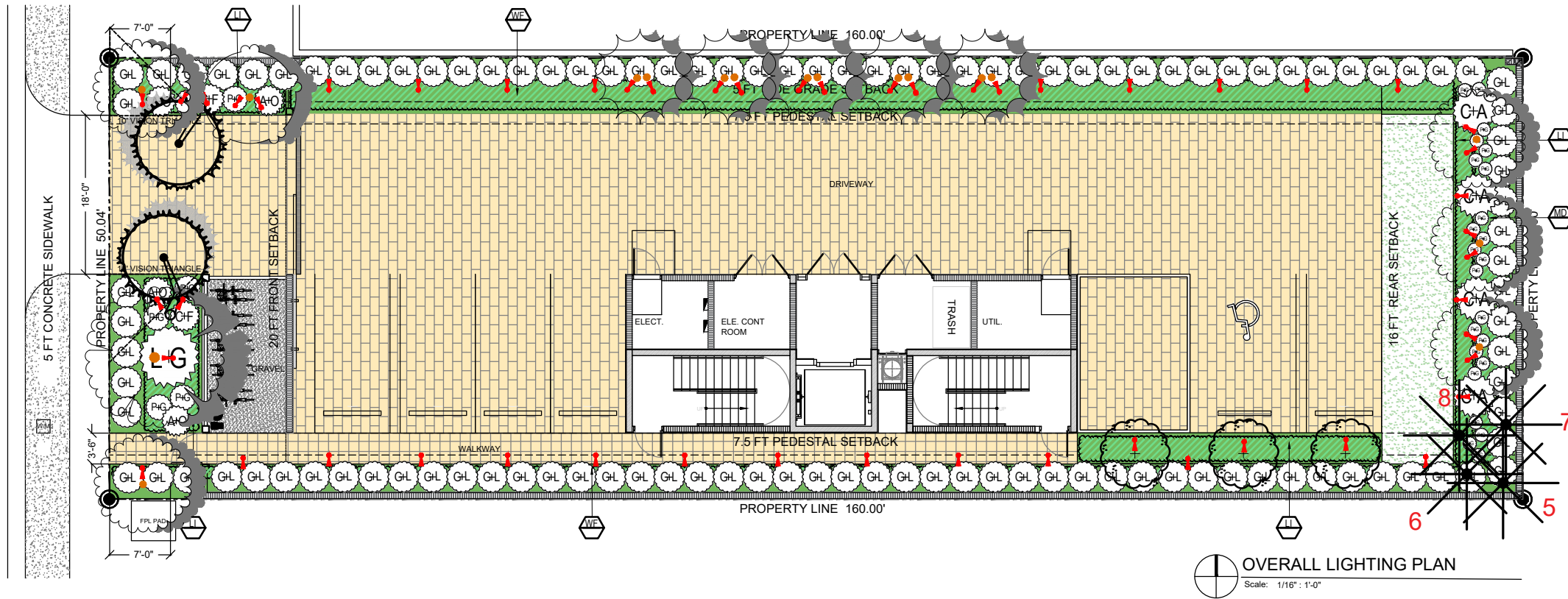
REV #	DATE	DESCRIPTION

DRAWN BY: JP
CHECKED BY: VF
DATE: 04.22.2024

DISCIPLINE / SHEET TITLE:
ROOF LEVEL HARDSCAPE PLAN

SHEET NUMBER:
LH-1.1

LENOX AVE



OVERALL LIGHTING PLAN
Scale: 1/16" = 1'-0"

FEATURES & BENEFITS

- Built in the U.S.A.
- CNC-machined from 6061 aircraft-grade aluminum or raw brass.
- U.S.A. made light engine and driver.
- Built in surge protector.
- Adjustable knuckle for ease of light positioning.
- IP66 rated.
- CREE 2 step binned LEDs with L70 over 80,000 hours.

SPECIFICATIONS

- **Construction:** 6061 aircraft-grade aluminum or raw brass
- **Finishes:** Architectural Bronze (AB), Black (BLK), Stainless Aluminum (SSA), Brass (BR)
- **Lead Wire:** 36" 22AWG tinned copper
- **Mounting:** 8" LV180 ground stake
- **Lens:** Clear flat
- **Driver System:** Internal
- **Operating Voltage:** 10.5-18 VAC
- **CRI:** 80+
- **Beam Spreads:** 12°, 25°, 40°, 60°

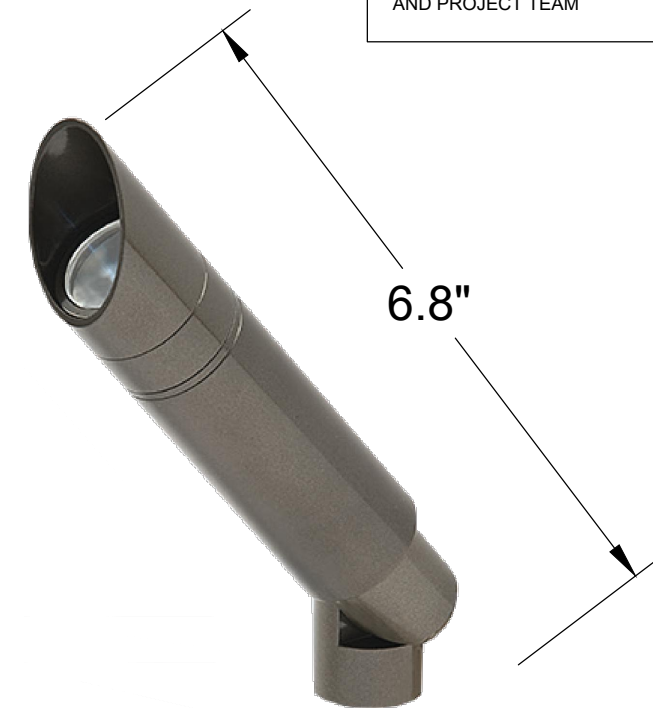
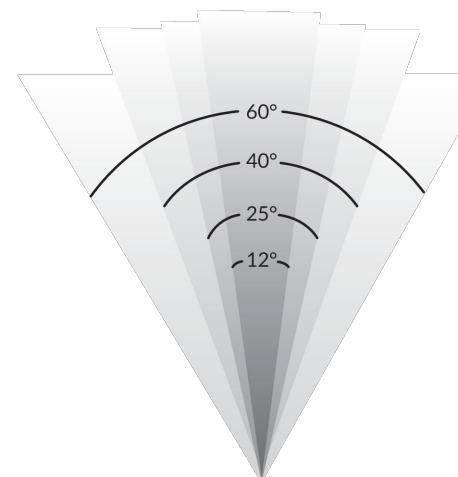
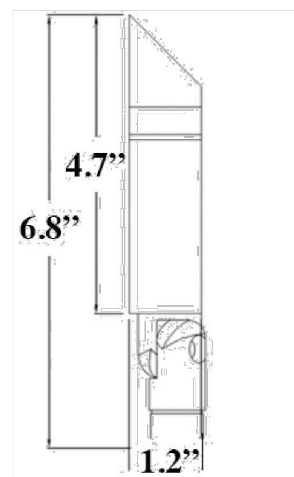
LIGHT FIXTURES				
SYM	QTY	FIXTURE TYPE	MANUFACTURER	SPEC
	52	UPLIGHT	GARDEN LIGHT LED	FINISH: ALUMINUM OR BRONZE

NOTE: SYMBOLS ON PLAN ARE EXAGGERATED IN SCALE FOR GRAPHIC CLARITY.

LANDSCAPE ARCHITECT TO APPROVE FINAL LOCATIONS

NIGHT TIME TEST TO BE COORDINATED BY CONTRACTOR WITH LANDSCAPE ARCHITECT AND PROJECT TEAM

PRODUCT DIMENSIONS & BEAM SPREADS



LANDSCAPE ARCHITECT
FL R.L.A.L.C. #667191
900 BISCAYNE BLVD
MIAMI, FL 33132
P: 786.346.8909
www.VincerFiligenzi.com

PROFESSIONAL SEAL:
VINCENT A. FILIGENZI
LA #667191

NOTE:
These architectural drawings and plans are the property of VFD INC. These drawings and plans shall not be reproduced for use by any individual or entity or any other project without the written permission.

LENOX AVENUE
Landscape Design
1525 Lenox Avenue
Miami Beach, FL 33139

REV #	DATE	DESCRIPTION

DRAWN BY: JP
CHECKED BY: VF
DATE: 04.22.2024

DISCIPLINE / SHEET TITLE:
OVERALL LIGHTING PLAN

SHEET NUMBER:
LL-1.0

LENOX AVE

5 FT CONCRETE SIDEWALK

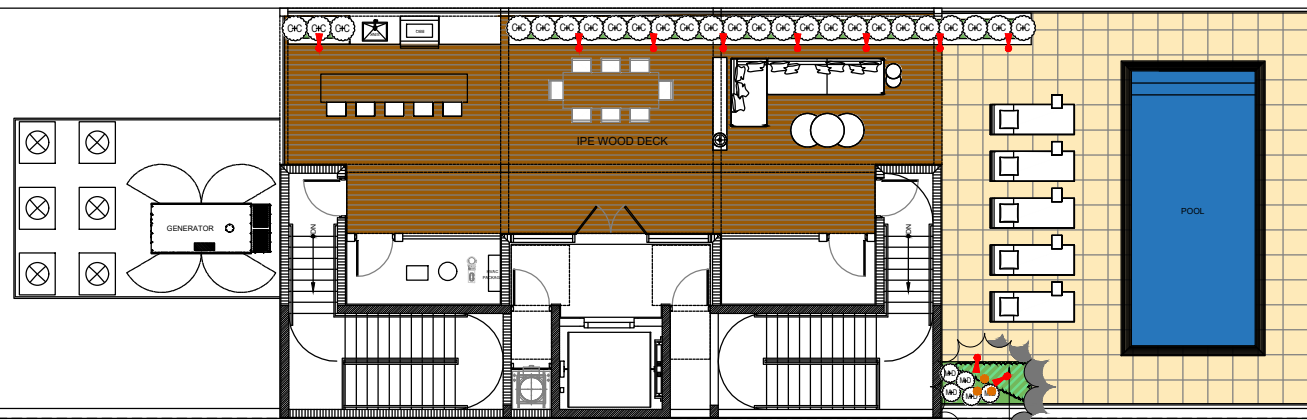
PROPERTY LINE 50.04'

20 FT FRONT SETBACK

PROPERTY LINE 160.00'

5 FT SIDE GRADE SETBACK

7.5 FT PEDESTAL SETBACK



7.5 FT PEDESTAL SETBACK

5 FT SIDE GRADE SETBACK

PROPERTY LINE 160.00'

16 FT REAR SETBACK

PROPERTY LINE 50.00'


OVERALL LIGHTING PLAN
Scale: 1/16" = 1'-0"

FEATURES & BENEFITS

- Built in the U.S.A.
- CNC-machined from 6061 aircraft-grade aluminum or raw brass.
- U.S.A. made light engine and driver.
- Built in surge protector.
- Adjustable knuckle for ease of light positioning.
- Adjustable knuckle for ease of light positioning.
- IP66 rated.
- CREE 2 step binned LEDs with L70 over 80,000 hours.

SPECIFICATIONS

- **Construction:** 6061 aircraft-grade aluminum or raw brass
- **Finishes:** Architectural Bronze (AB), Black (BLK), Stainless Aluminum (SSA), Brass (BR)
- **Lead Wire:** 36" 22AWG tinned copper
- **Mounting:** 8" LV180 ground stake
- **Lens:** Clear flat
- **Driver System:** Internal
- **Operating Voltage:** 10.5-18 VAC
- **CRI:** 80+
- **Beam Spreads:** 12°, 25°, 40°, 60°

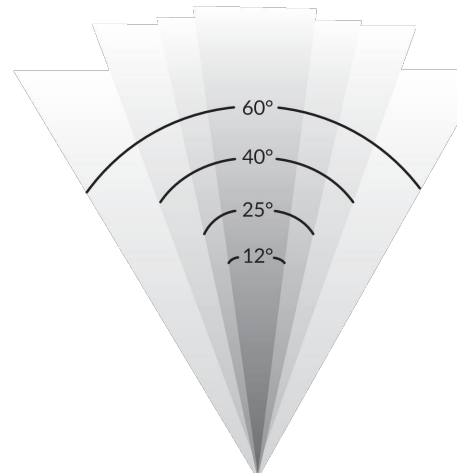
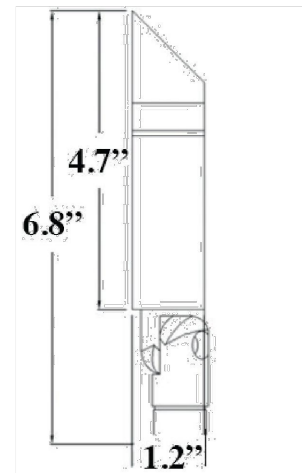
LIGHT FIXTURES				
SYM	QTY	FIXTURE TYPE	MANUFACTURER	SPEC
	10	UPLIGHT	GARDEN LIGHT LED	FINISH: ALUMINUM OR BRONZE

NOTE: SYMBOLS ON PLAN ARE EXAGGERATED IN SCALE FOR GRAPHIC CLARITY.

LANDSCAPE ARCHITECT TO APPROVE FINAL LOCATIONS

NIGHT TIME TEST TO BE COORDINATED BY CONTRACTOR WITH LANDSCAPE ARCHITECT AND PROJECT TEAM

PRODUCT DIMENSIONS & BEAM SPREADS



LANDSCAPE ARCHITECT
FL R.L.A.L.C. #667191
900 BISCAYNE BLVD
MIAMI, FL 33132
P: 786.346.8909
www.VincerFiligenzi.com

PROFESSIONAL SEAL:



NOTE:
These architectural drawings and plans are the property of VFD INC. These drawings and plans shall not be reproduced or used by any individual or entity or any other project without the express written permission.

LENOX AVENUE
Landscape Design
1525 Lenox Avenue
Miami Beach, FL 33139

SHEET ISSUE:		
REV #	DATE	DESCRIPTION

DRAWN BY: JP
CHECKED BY: VF
DATE: 04.22.2024

DISCIPLINE / SHEET TITLE:
OVERALL LIGHTING PLAN

SHEET NUMBER:
LL-1.1