

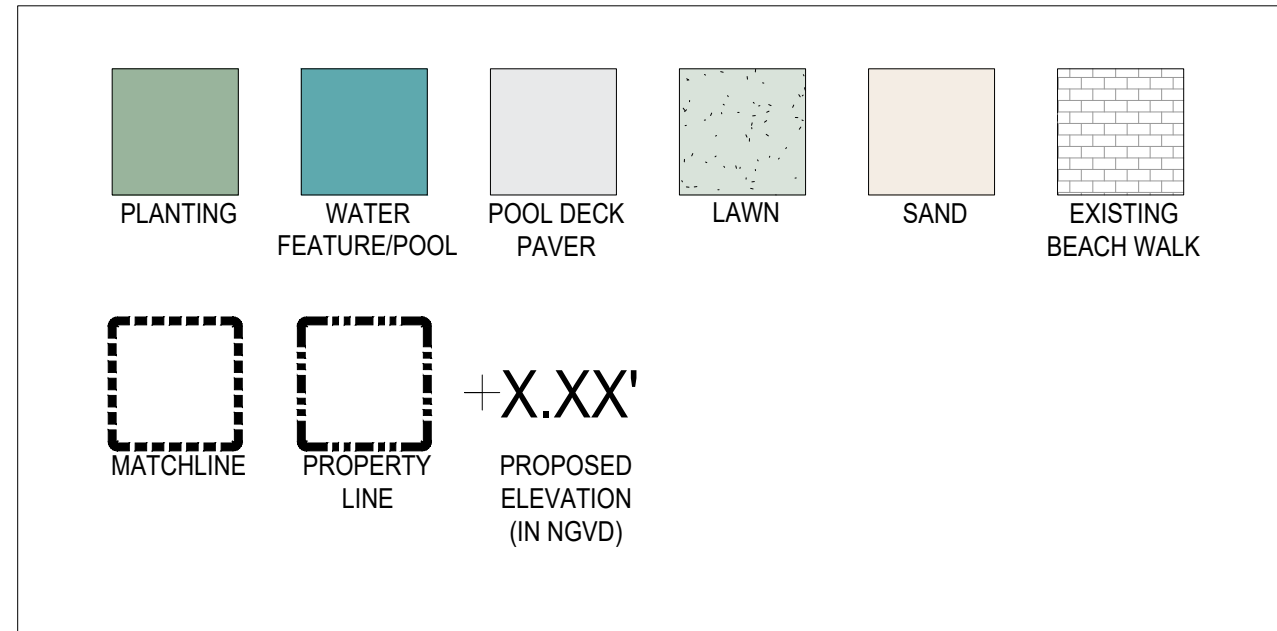
## SHEET INDEX

SHEET #	SHEET TITLE				
L-0.00	COVER SHEET				
L-0.00A	SITE TABULATIONS				
L-0.01	SITE SURVEY				
L-0.02	SURVEY TREE LIST				
L-0.10	INSPIRATION / HARDSCAPE REFERENCE IMAGES				
L-0.11	INSPIRATION / HARDSCAPE REFERENCE IMAGES				
L-0.12	INSPIRATION / HARDSCAPE REFERENCE IMAGES				
L-1.00	RENDERED SITE PLAN				
L-1.01	OVERALL HARDSCAPE PLAN				
L-1.10	REAR YARD HARDSCAPE AREA DIAGRAM				
L-2.00	WEST ELEVATION				
L-2.01	EAST ELEVATION				
L-2.02	SOUTH ELEVATION				
L-2.03	NORTH ELEVATION				
L-3.00	OVERALL TREE DISPOSITION PLAN				
L-3.01	TREE DISPOSITION LIST				
L-3.10	OVERALL LANDSCAPE PLAN				
L-3.11	OVERALL LANDSCAPE PLANT LIST				
L-3.20	LANDSCAPE REFERENCE IMAGES				
L-3.30	GENERAL PLANTING DETAILS				
L-4.10	OVERALL LANDSCAPE LIGHTING PLAN				
L-5.10	OVERALL IRRIGATION PLAN				
L-6.01	3D RENDERINGS				
L-6.02	3D RENDERINGS				
L-6.03	3D RENDERINGS				

## SCOPE OF WORK

- HARDSCAPE, LANDSCAPE, LANDSCAPE LIGHTING, AND IRRIGATION WITHIN THE LIMITS DEFINED BY THE LIMITS OF SCOPE OF WORK.

## GRAPHIC LEGEND



## GENERAL ABBREVIATIONS

TW	TOP OF WALL	OA	OVERALL PLAN
TPW	TOP OF PLANTER WALL	CONC	CONCRETE
TB	TOP OF BENCH	LA	LANDSCAPE ARCHITECT
TC	TOP OF CURB	ARCH	ARCHITECT
FFE	FINISH FLOOR ELEVATION	STRUCT	STRUCTURE / STRUCTURAL
AFF	ABOVE FINISH FLOOR	ENG	ENGINEER
P.L.	PROPERTY LINE	DWGS	DRAWINGS
TG	TOP OF GRADE	TYP	TYPICAL
M	MONUMENT LINE	EXST	EXISTING
CL	CENTER LINE	HSCP	HARDSCAPE
ML	MATCH LINE	LSCP	LANDSCAPE
EL	ENLARGED PLAN	PLNT	PLANTING

**Andaz**  
4041 Collins Ave, Miami Beach, FL 33140

## CITY OF MIAMI BEACH LANDSCAPE LEGEND

INFORMATION REQUIRED TO BE PERMANENTLY AFFIXED TO PLANS

Planning District RM-2 Lot Area 62,310 Acres 1.43

	REQUIRED/ ALLOWED	PROVIDED
<b><u>OPEN SPACE</u></b>		
A. Square feet of required Open Space as indicated on site plan: Lot Area = <u>62,310</u> s.f. x <u>10</u> % = <u>6,231</u> s.f.	6,231	9,608
B. Square feet of parking lot open space required as indicated on site plan: Number of parking spaces _____ x 10 s.f. parking space =	N/A	N/A
C. Total square feet of landscaped open space required: A+B=	6,231	9,608
<b><u>LAWN AREA CALCULATION</u></b>		
A. Square feet of landscaped open space required	6,231	9,608
B. Maximum lawn area (sod) permitted= <u>50</u> % x <u>6,231</u> s.f.	3,116	3,114
<b><u>TREES</u></b>		
A. Number of trees required per lot or net lot acre, less existing number of trees meeting minimum requirements= <u>28</u> trees x <u>1.43</u> net lot acres - (4) number of existing	40	40
B. % Natives required: Number of trees provided x 30% =	12	33
C. % Low maintenance / drought and salt tolerant required: Number of trees provided x 50%=	20	40
D. Street Trees (maximum average spacing of 20' o.c.) linear feet along street divided by 20'=	N/A	N/A
E. Street tree species allowed directly beneath power lines: (maximum average spacing of 20' o.c.): <u>475</u> linear feet along street divided by 20'=	N/A	N/A
	23	0
<b><u>SHRUBS</u></b>		
A. Number of shrubs required: Sum of lot and street trees required x 12=	756	1,963
B. % Native shrubs required: Number of shrubs provided x 50%=	378	776
<b><u>LARGE SHRUBS OR SMALL TREES</u></b>		
A. Number of large shrubs or small trees required: Number of required shrubs x 10%=	76	97
B. % Native large shrubs or small trees required: Number of large shrubs or small trees provided x 50%=	39	46



## ANDAZ, MIAMI BEACH 4041 COLLINS AVE., MIAMI BEACH, FL 33140 HISTORIC PRESERVATION BOARD SUBMITTAL FOR PROPOSED CANOPY

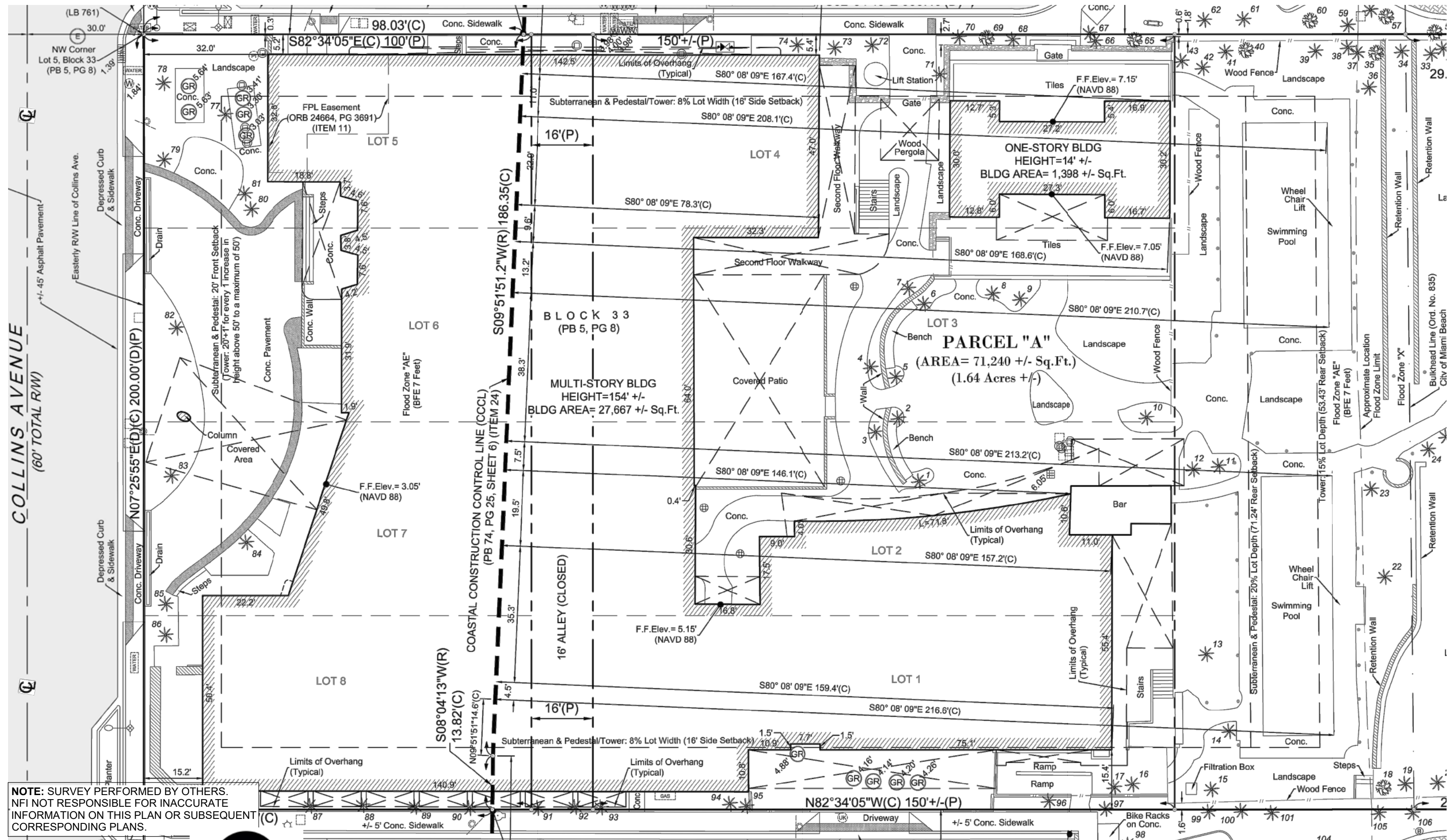
JANUARY 17, 2023: FIRST SUBMITTAL / FEBRUARY 06, 2023: FINAL SUBMITTAL



sheet no.  
**L-0.00A**

SITE TABULATIONS

SCALE: AS NOTED



COLLINS AVENUE  
(60' TOTAL R/W)

NOTE: SURVEY PERFORMED BY OTHERS.  
NFI NOT RESPONSIBLE FOR INACCURATE  
INFORMATION ON THIS PLAN OR SUBSEQUENT  
CORRESPONDING PLANS.



**ANDAZ, MIAMI BEACH**  
**4041 COLLINS AVE., MIAMI BEACH, FL 33140**  
 HISTORIC PRESERVATION BOARD SUBMITTAL FOR PROPOSED CANOPY

JANUARY 17, 2023: FIRST SUBMITTAL / FEBRUARY 06, 2023: FINAL SUBMITTAL



sheet no.  
**L-0.01**

SITE SURVEY

TREE LIST					
Tree Number	Common Name	Botanical Name	Diameter (inches)	Height (feet)	Canopy (feet)
1	Palmetto	<i>Sabal palmetto</i>	15"	45'	10'
2	Palmetto	<i>Sabal palmetto</i>	12"	40'	8'
3	Palmetto	<i>Sabal palmetto</i>	12"	20'	8'
4	Palmetto	<i>Sabal palmetto</i>	12"	45'	8'
5	Palmetto	<i>Sabal palmetto</i>	15"	35'	8'
6	Palmetto	<i>Sabal palmetto</i>	12"	40'	8'
7	Palmetto	<i>Sabal palmetto</i>	12"	35'	8'
8	Coconut Palm	<i>Cocos nucifera</i>	12"	25'	10'
9	Coconut Palm	<i>Cocos nucifera</i>	15"	25'	10'
10	Palmetto	<i>Sabal palmetto</i>	17"	25'	10'
11	Christmas Palm	<i>Adonidia merrillii</i>	6"	10'	12'
12	Palmetto	<i>Sabal palmetto</i>	2"	8'	6'
13	Silver Palm	<i>Coccothrinax argentata</i>	12"	15'	12'
14	Coconut Palm	<i>Cocos nucifera</i>	14"	20'	12'
15	Palmetto	<i>Sabal palmetto</i>	6"	10'	8'
16	Coconut Palm	<i>Cocos nucifera</i>	12"	20'	12'
17	Palmetto	<i>Sabal palmetto</i>	4"	8'	5'
18	Fig Tree	<i>Ficus carica</i>	8"	10'	10'
19	Coconut Palm	<i>Cocos nucifera</i>	10"	20'	12'
20	Coconut Palm	<i>Cocos nucifera</i>	8"	12'	10'
21	Palmetto	<i>Sabal palmetto</i>	6"	10'	5'
22	Coconut Palm	<i>Cocos nucifera</i>	10"	20'	15'
23	Coconut Palm	<i>Cocos nucifera</i>	10"	12'	12'
24	Palmetto	<i>Sabal palmetto</i>	6"	8'	6'
25	Palmetto	<i>Sabal palmetto</i>	6"	8'	6'
26	Palmetto	<i>Sabal palmetto</i>	6"	8'	6'
27	Palmetto	<i>Sabal palmetto</i>	6"	8'	6'
28	Coconut Palm	<i>Cocos nucifera</i>	10"	16'	12'
29	Palmetto	<i>Sabal palmetto</i>	6"	8'	6'
30	Coconut Palm	<i>Cocos nucifera</i>	10"	12'	12'
31	Coconut Palm	<i>Cocos nucifera</i>	24"	30'	18'
32	Palmetto	<i>Sabal palmetto</i>	6"	8'	6'
33	Coconut Palm	<i>Cocos nucifera</i>	12"	20'	12'
34	Coconut Palm	<i>Cocos nucifera</i>	12"	25'	16'
35	Phoenix Palm	<i>Phoenix canariensis</i>	24"	40'	20'
36	Silver Palm	<i>Coccothrinax argentata</i>	12"	8'	16'
37	Coconut Palm	<i>Cocos nucifera</i>	12"	20'	12'
38	Palmetto	<i>Sabal palmetto</i>	6"	8'	8'
39	Coconut Palm	<i>Cocos nucifera</i>	12"	30'	20'
40	Fig Tree	<i>Ficus carica</i>	8"	20'	20'
41	Coconut Palm	<i>Cocos nucifera</i>	12"	35'	20'
42	Fig Tree	<i>Ficus carica</i>	12"	12'	10'
43	Coconut Palm	<i>Cocos nucifera</i>	12"	25'	20'
44	Coconut Palm	<i>Cocos nucifera</i>	12"	20'	16'
45	Coconut Palm	<i>Cocos nucifera</i>	12"	20'	16'
46	Coconut Palm	<i>Cocos nucifera</i>	12"	20'	16'
47	Coconut Palm	<i>Cocos nucifera</i>	12"	20'	16'
48	Coconut Palm	<i>Cocos nucifera</i>	12"	20'	16'
49	Coconut Palm	<i>Cocos nucifera</i>	12"	20'	16'
50	Coconut Palm	<i>Cocos nucifera</i>	12"	20'	16'

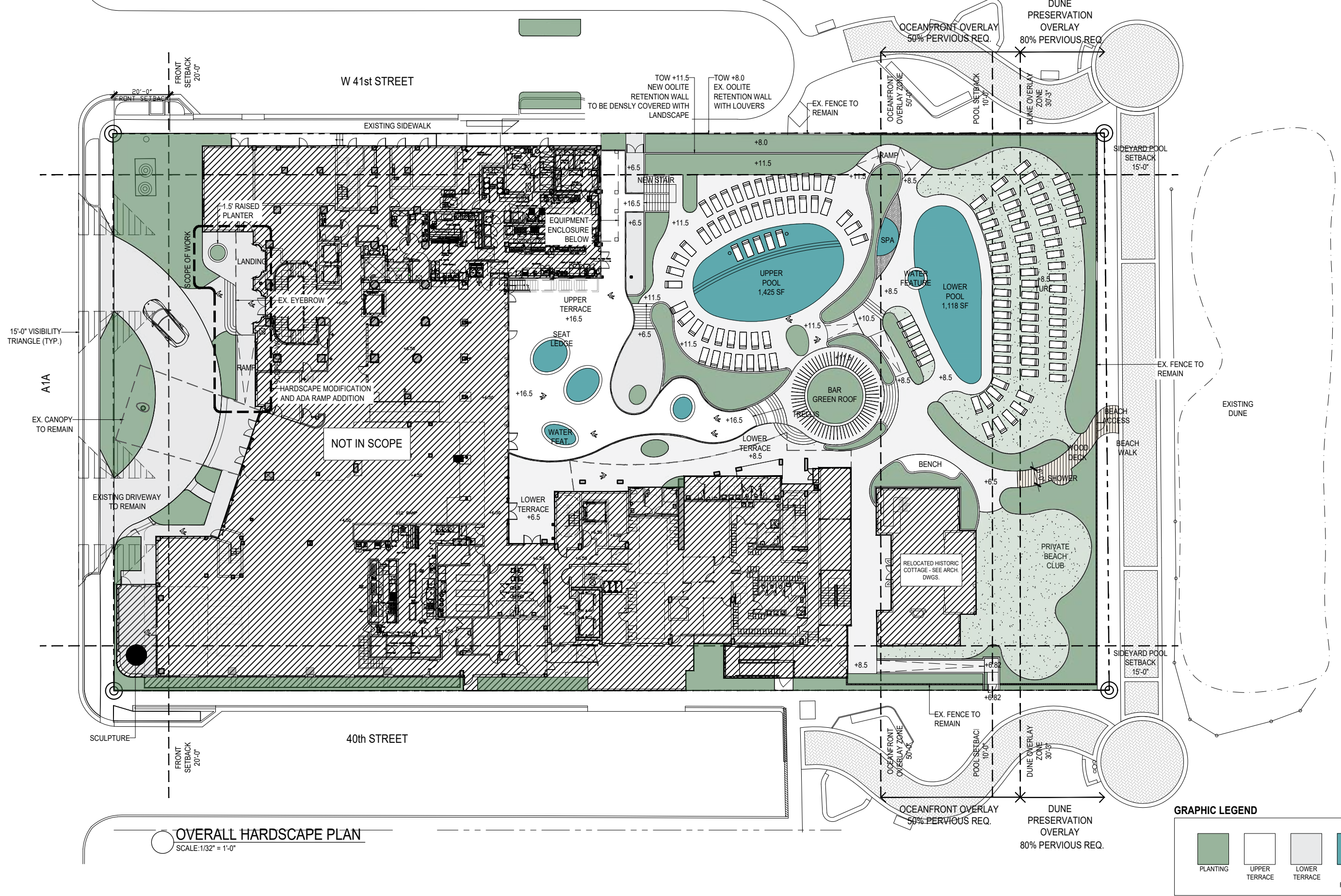
50	Coconut Palm	<i>Cocos nucifera</i>	12"	20'	16'
51	Coconut Palm	<i>Cocos nucifera</i>	12"	20'	16'
52	Coconut Palm	<i>Cocos nucifera</i>	12"	20'	16'
53	Coconut Palm	<i>Cocos nucifera</i>	12"	12'	12'
54	Palmetto	<i>Sabal palmetto</i>	10"	10'	8'
55	Fig Tree	<i>Ficus carica</i>	4"	10'	4'
56	Sea Grape	<i>Coccoloba uvifera</i>	8"	12'	10'
57	Sea Grape	<i>Coccoloba uvifera</i>	10"	20'	15'
58	Palmetto	<i>Sabal palmetto</i>	6"	10'	3'
59	Palmetto	<i>Sabal palmetto</i>	6"	8'	3'
60	Sea Grape	<i>Coccoloba uvifera</i>	24"	30'	30'
61	Coconut Palm	<i>Cocos nucifera</i>	12"	18'	8'
62	Coconut Palm	<i>Cocos nucifera</i>	12"	18'	8'
63	Sea Grape	<i>Coccoloba uvifera</i>	24"	25'	20'
64	Palmetto	<i>Sabal palmetto</i>	12"	10'	2'
65	Palmetto	<i>Sabal palmetto</i>	18"	12'	12'
66	Coconut Palm	<i>Cocos nucifera</i>	10"	25'	12'
67	Palm	<i>Arecaceae</i>	14"	12'	12'
68	Coconut Palm	<i>Cocos nucifera</i>	12"	20'	12'
69	Fig Tree	<i>Ficus carica</i>	12"	10'	15'
70	Coconut Palm	<i>Cocos nucifera</i>	12"	15'	12'
71	Coconut Palm	<i>Cocos nucifera</i>	12"	15'	12'
72	Coconut Palm	<i>Cocos nucifera</i>	24"	40'	17'
73	Coconut Palm	<i>Cocos nucifera</i>	18"	55'	12'
74	Coconut Palm	<i>Cocos nucifera</i>	24"	40'	17'
75	Palmetto	<i>Sabal palmetto</i>	18"	15'	8'
76	Palmetto	<i>Sabal palmetto</i>	18"	15'	8'
77	Phoenix Palm	<i>Phoenix canariensis</i>	24"	15'	20'
78	Phoenix Palm	<i>Phoenix canariensis</i>	24"	15'	20'
79	Phoenix Palm	<i>Phoenix canariensis</i>	14"	20'	10'
80	Phoenix Palm	<i>Phoenix canariensis</i>	24"	20'	20'
81	Phoenix Palm	<i>Phoenix canariensis</i>	12"	15'	10'
82	Phoenix Palm	<i>Phoenix canariensis</i>	24"	20'	20'
83	Palmetto	<i>Sabal palmetto</i>	10"	20'	8'
84	Palmetto	<i>Sabal palmetto</i>	12"	10'	8'
85	Palm	<i>Arecaceae</i>	24"	15'	12'
86	Palm	<i>Arecaceae</i>	24"	10'	12'
87	Christmas Palm	<i>Adonidia merrillii</i>	8"	20'	6'
88	Christmas Palm	<i>Adonidia merrillii</i>	8"	20'	6'
89	Christmas Palm	<i>Adonidia merrillii</i>	8"	20'	6'
90	Christmas Palm	<i>Adonidia merrillii</i>	8"	20'	6'
91	Christmas Palm	<i>Adonidia merrillii</i>	8"	20'	6'
92	Christmas Palm	<i>Adonidia merrillii</i>	8"	20'	6'
93	Christmas Palm	<i>Adonidia merrillii</i>	8"	20'	6'
94	Christmas Palm	<i>Adonidia merrillii</i>	8"	20'	6'
95	Christmas Palm	<i>Adonidia merrillii</i>	8"	20'	6'
96	Christmas Palm	<i>Adonidia merrillii</i>	4"	12'	6'
97	Coconut Palm	<i>Cocos nucifera</i>	8"	20'	10'
98	Coconut Palm	<i>Cocos nucifera</i>	8"	20'	10'
99	Coconut Palm	<i>Cocos nucifera</i>	8"	20'	10'
100	Coconut Palm	<i>Cocos nucifera</i>	8"	20'	10'
101	Coconut Palm	<i>Cocos nucifera</i>	8"	20'	10'
102	Coconut Palm	<i>Cocos nucifera</i>	8"	20'	10'
103	Coconut Palm	<i>Cocos nucifera</i>	8"	20'	10'
104	Fig Tree	<i>Ficus carica</i>	12"	12'	10'
105	Coconut Palm	<i>Cocos nucifera</i>	8"	20'	10'
106	Palmetto	<i>Sabal palmetto</i>	12"	12'	3'
107	Palmetto	<i>Sabal palmetto</i>	12"	12'	3'
108	Palmetto	<i>Sabal palmetto</i>	12"	12'	3'
109	Palmetto	<i>Sabal palmetto</i>	12"	12'	3'
110	Palmetto	<i>Sabal palmetto</i>	12"	12'	3'











**OVERALL HARDSCAPE PLAN**  
SCALE: 1/32" = 1'-0"

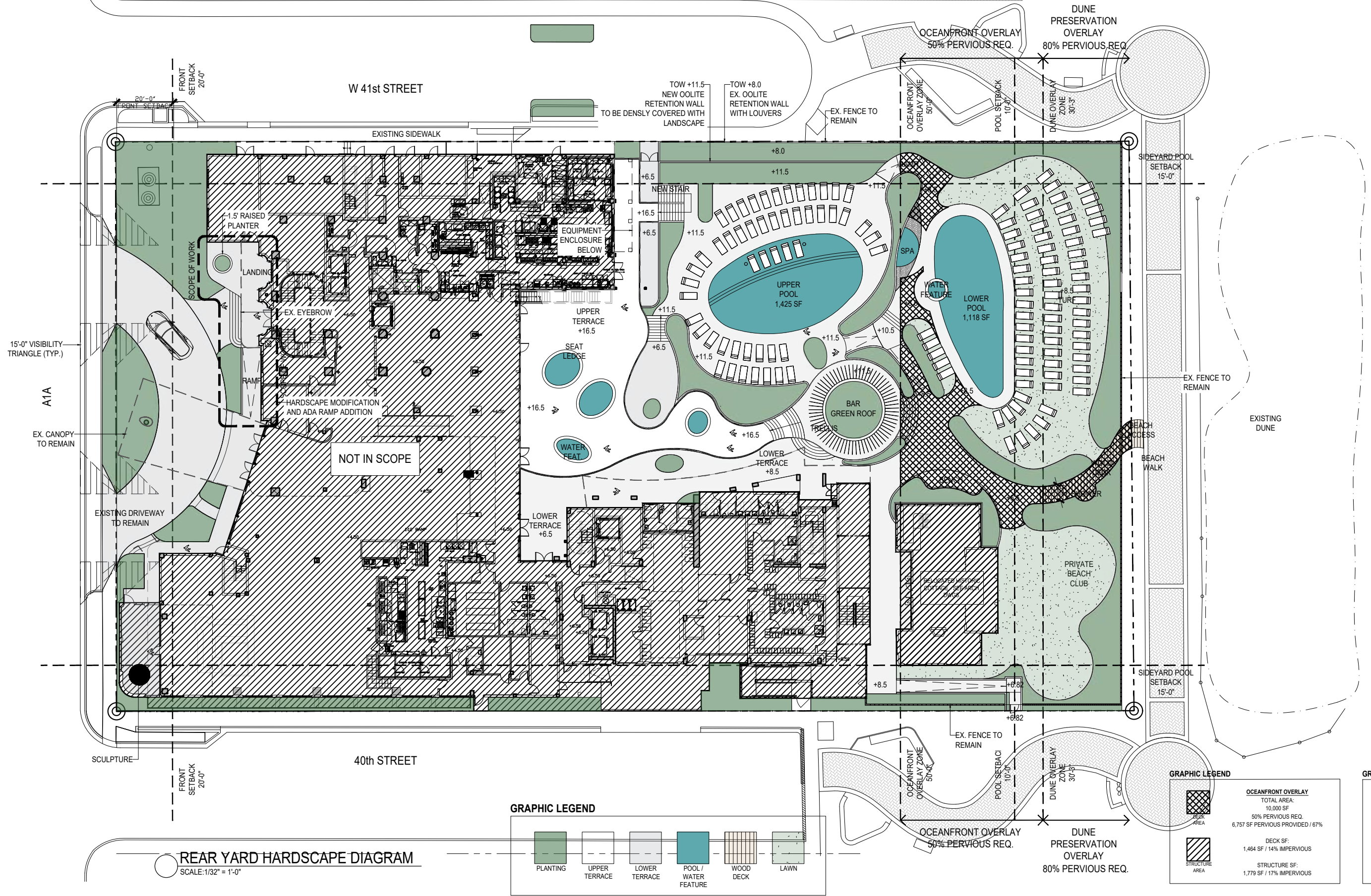
**GRAPHIC LEGEND**

PLANTING	UPPER TERRACE	LOWER TERRACE	POOL / WATER FEATURE	WOOD DECK	LAWN



**ANDAZ, MIAMI BEACH**  
**4041 COLLINS AVE., MIAMI BEACH, FL 33140**  
 HISTORIC PRESERVATION BOARD SUBMITTAL FOR PROPOSED CANOPY  
 JANUARY 17, 2023: FIRST SUBMITTAL / FEBRUARY 06, 2023: FINAL SUBMITTAL

sheet no.  
**L-1.01**  
 OVERALL HARDSCAPE PLAN  
 SCALE: AS NOTED



**REAR YARD HARDSCAPE DIAGRAM**  
SCALE: 1/32" = 1'-0"

**GRAPHIC LEGEND**

	PLANTING
	UPPER TERRACE
	LOWER TERRACE
	POOL / WATER FEATURE
	WOOD DECK
	LAWN

**GRAPHIC LEGEND**

	<b>OCEANFRONT OVERLAY</b> TOTAL AREA: 10,000 SF 50% PERVIOUS REQ. 6,757 SF PERVIOUS PROVIDED / 67%
	DECK SF: 1,464 SF / 14% IMPERVIOUS STRUCTURE SF: 1,779 SF / 17% IMPERVIOUS

**GRAPHIC LEGEND**

	<b>DUNE PRESERVATION OVERLAY</b> TOTAL AREA: 6,381 SF 80% PERVIOUS REQ. 3,422 SF PERVIOUS PROVIDED / 95%
	DECK SF: 259 SF / 4% IMPERVIOUS STRUCTURE SF: 0 SF / 0% IMPERVIOUS



**ANDAZ, MIAMI BEACH**  
**4041 COLLINS AVE., MIAMI BEACH, FL 33140**  
 HISTORIC PRESERVATION BOARD SUBMITTAL FOR PROPOSED CANOPY

JANUARY 17, 2023: FIRST SUBMITTAL / FEBRUARY 06, 2023: FINAL SUBMITTAL





ANDAZ, MIAMI BEACH  
4041 COLLINS AVE., MIAMI BEACH, FL 33140  
HISTORIC PRESERVATION BOARD SUBMITTAL FOR PROPOSED CANOPY  
JANUARY 17, 2023: FIRST SUBMITTAL / FEBRUARY 06, 2023: FINAL SUBMITTAL

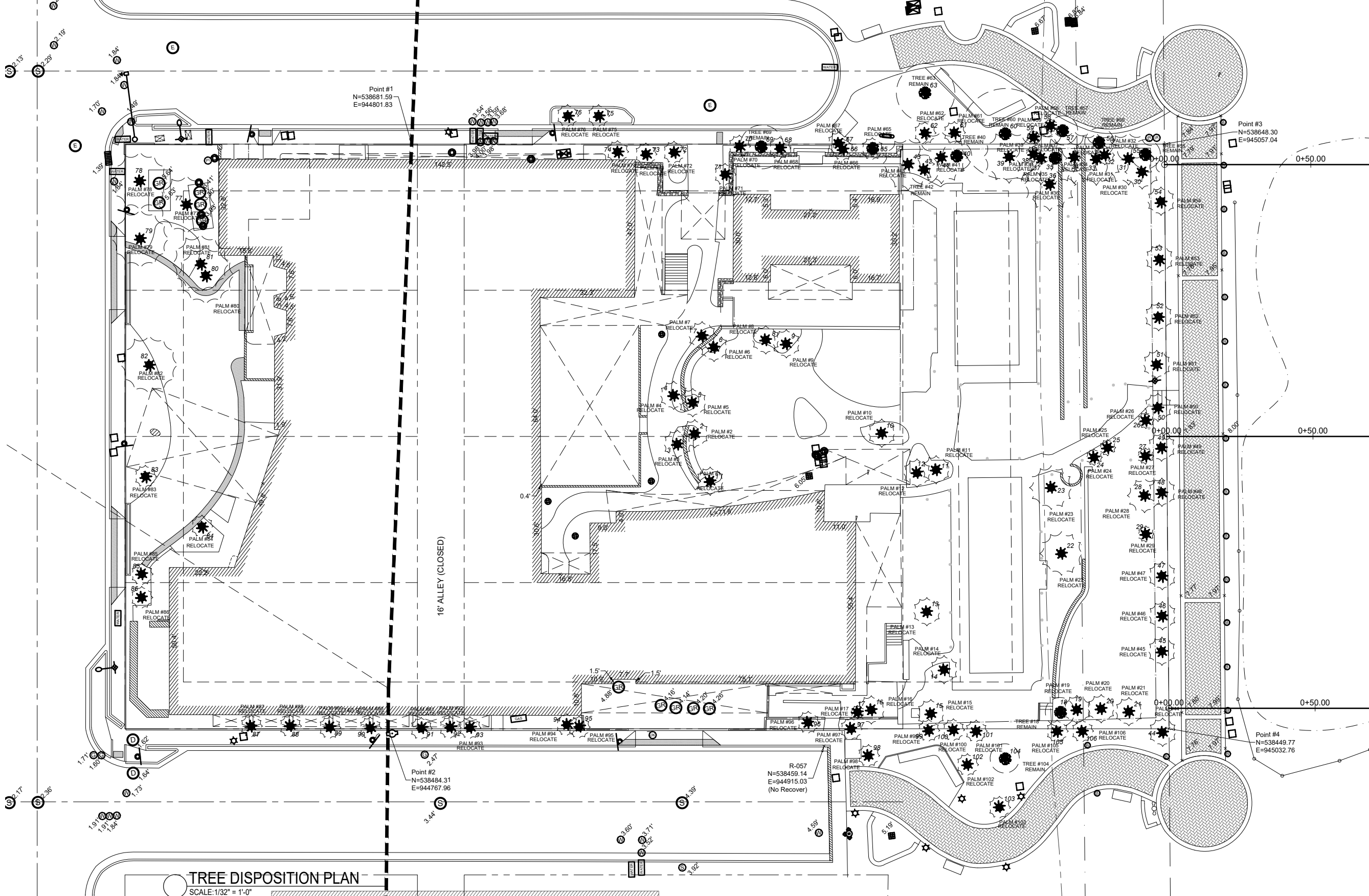


sheet no.  
**L-2.01**  
EAST ELEVATION  
SCALE: AS NOTED

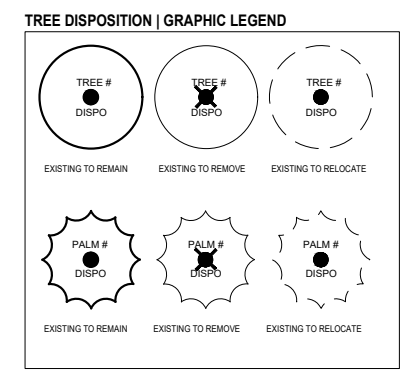








**TREE DISPOSITION PLAN**  
SCALE: 1/32" = 1'-0"



NOTE: SEE SHEET L-3.01 FOR TREE DISPOSITION LIST



**ANDAZ, MIAMI BEACH**  
**4041 COLLINS AVE., MIAMI BEACH, FL 33140**  
 HISTORIC PRESERVATION BOARD SUBMITTAL FOR PROPOSED CANOPY  
 JANUARY 17, 2023: FIRST SUBMITTAL / FEBRUARY 06, 2023: FINAL SUBMITTAL

sheet no.  
**L-3.00**  
**OVERALL TREE DISPOSITION PLAN**  
 SCALE: AS NOTED

NATURALFICIAL, INC. | ANDAZ | TREE DISPOSITION LIST: 2023.01.20

KEY #	ABRV.	BOTANICAL NAME	COMMON NAME	SIZE			DISPOSITION			CONDITION	NOTES	MITIGATION REQ'D
				DBH (IN.)	HT. (FT.)	SPD. (FT.)	REMAIN	REMOVE	RELOCATE ON SITE			
1	SPA	Sabal palmetto	Palmetto	15"	45'	10'			X			
2	SPA	Sabal palmetto	Palmetto	12"	40'	8'			X			
3	SPA	Sabal palmetto	Palmetto	12"	20'	8'			X			
4	SPA	Sabal palmetto	Palmetto	12"	45'	8'			X			
5	SPA	Sabal palmetto	Palmetto	15"	35'	8'			X			
6	SPA	Sabal palmetto	Palmetto	12"	40'	8'			X			
7	SPA	Sabal palmetto	Palmetto	12"	35'	8'			X			
8	CNU	Cocos nucifera	Coconut Palm	12"	25'	10'			X			
9	CNU	Cocos nucifera	Coconut Palm	15"	25'	10'			X			
10	SPA	Sabal palmetto	Palmetto	17"	25'	10'			X			
11	AME	Adonidia merrillii	Christmas Palm	6"	10'	12'			X			
12	SPA	Sabal palmetto	Palmetto	2"	8'	6'			X			
13	CAR	Coccothrinax argentata	Silver Palm	12"	15'	12'			X			
14	CNU	Cocos nucifera	Coconut Palm	14"	20'	12'			X			
15	SPA	Sabal palmetto	Palmetto	6"	10'	8'			X			
16	CNU	Cocos nucifera	Coconut Palm	12"	20'	12'			X			
17	SPU	Sabal palmetto	Palmetto	4"	8'	5'			X			
18	FCA	Ficus carica	Fig Tree	8"	10'	10'			X			
19	CNU	Cocos nucifera	Coconut Palm	10"	20'	12'			X			
20	CNU	Cocos nucifera	Coconut Palm	8"	12'	10'			X			
21	SPA	Sabal palmetto	Palmetto	6"	10'	5'			X			
22	CNU	Cocos nucifera	Coconut Palm	10"	20'	15'			X			
23	CNU	Cocos nucifera	Coconut Palm	10"	12'	12'			X			
24	SPA	Sabal palmetto	Palmetto	6"	8'	6'			X			
25	SPA	Sabal palmetto	Palmetto	6"	8'	6'			X			
26	SPA	Sabal palmetto	Palmetto	6"	8'	6'			X			
27	SPA	Sabal palmetto	Palmetto	6"	8'	6'			X			
28	CNU	Cocos nucifera	Coconut Palm	10"	16'	12'			X			
29	SPA	Sabal palmetto	Palmetto	6"	8'	6'			X			
30	CNU	Cocos nucifera	Coconut Palm	10"	12'	12'			X			
31	CNU	Cocos nucifera	Coconut Palm	24"	30'	18'			X			
32	SPA	Sabal palmetto	Palmetto	6"	8'	6'			X			
33	CNU	Cocos nucifera	Coconut Palm	12"	20'	12'			X			
34	CNU	Cocos nucifera	Coconut Palm	12"	25'	16'			X			
35	PCA	Phoenix canariensis	Phoenix Palm	24"	40'	20'			X			
36	CAR	Coccothrinax argentata	Silver Palm	12"	8'	16'			X			
37	CNU	Cocos nucifera	Coconut Palm	12"	20'	12'			X			
38	SPA	Sabal palmetto	Palmetto	6"	8'	8'			X			
39	CNU	Cocos nucifera	Coconut Palm	12"	30'	20'			X			
40	FCA	Ficus carica	Fig Tree	8"	20'	20'			X			
41	CNU	Cocos nucifera	Coconut Palm	12"	35'	20'			X			
42	FCA	Ficus carica	Fig Tree	12"	12'	10'			X			
43	CNU	Cocos nucifera	Coconut Palm	12"	25'	20'			X			
44	CNU	Cocos nucifera	Coconut Palm	12"	20'	16'			X			
45	CNU	Cocos nucifera	Coconut Palm	12"	20'	16'			X			
46	CNU	Cocos nucifera	Coconut Palm	12"	20'	16'			X			
47	CNU	Cocos nucifera	Coconut Palm	12"	20'	16'			X			
48	CNU	Cocos nucifera	Coconut Palm	12"	20'	16'			X			
49	CNU	Cocos nucifera	Coconut Palm	12"	20'	16'			X			
50	CNU	Cocos nucifera	Coconut Palm	12"	20'	16'			X			
51	CNU	Cocos nucifera	Coconut Palm	12"	20'	16'			X			
52	CNU	Cocos nucifera	Coconut Palm	12"	20'	16'			X			
53	CNU	Cocos nucifera	Coconut Palm	12"	12'	12'			X			
54	SPA	Sabal palmetto	Palmetto	10"	10'	8'			X			
55	FCA	Ficus carica	Fig Tree	4"	10'	4'			X			
56	CUV	Coccoloba uvifera	Sea Grape	8"	12'	10'			X			
57	CUV	Coccoloba uvifera	Sea Grape	10"	20'	15'			X			
58	SPA	Sabal palmetto	Palmetto	6"	10'	3'			X			
59	SPA	Sabal palmetto	Palmetto	6"	8'	3'			X			
60	CUV	Coccoloba uvifera	Sea Grape	24"	30'	30'			X			
61	CNU	Cocos nucifera	Coconut Palm	12"	18'	8'			X			
62	CNU	Cocos nucifera	Coconut Palm	12"	18'	8'			X			
63	CUV	Coccoloba uvifera	Sea Grape	24"	25'	20'			X			
64	SPA	Sabal palmetto	Palmetto	12"	10'	2'			X			
65	SPA	Sabal palmetto	Palmetto	18"	12'	12'			X			
66	CNU	Cocos nucifera	Coconut Palm	10"	25'	12'			X			
67	ARE	Arecaceae	Palm	14"	12'	12'			X			

68	CNU	Cocos nucifera	Coconut Palm	12"	20'	12'					X		
69	FCA	Ficus carica	Fig Tree	12"	10'	15'					X		
70	CNU	Cocos nucifera	Coconut Palm	12"	15'	12'					X		
71	CNU	Cocos nucifera	Coconut Palm	12"	15'	12'					X		
72	CNU	Cocos nucifera	Coconut Palm	24"	40'	17'					X		
73	CNU	Cocos nucifera	Coconut Palm	18"	55'	12'					X		
74	CNU	Cocos nucifera	Coconut Palm	24"	40'	17'					X		
75	SPA	Sabal palmetto	Palmetto	18"	15'	8'					X		
76	SPA	Sabal palmetto	Palmetto	18"	15'	8'					X		
77	PCA	Phoenix canariensis	Phoenix Palm	24"	15'	20'					X		
78	PCA	Phoenix canariensis	Phoenix Palm	24"	15'	20'					X		
79	PCA	Phoenix canariensis	Phoenix Palm	14"	20'	10'					X		
80	PCA	Phoenix canariensis	Phoenix Palm	24"	20'	20'					X		
81	PCA	Phoenix canariensis	Phoenix Palm	12"	15'	10'					X		
82	PCA	Phoenix canariensis	Phoenix Palm	24"	20'	20'					X		
83	SPA	Sabal palmetto	Palmetto	10"	20'	8'					X		
84	SPA	Sabal palmetto	Palmetto	12"	10'	8'					X		
85	ARE	Arecaceae	Palm	24"	15'	12'					X		
86	ARE	Arecaceae	Palm	24"	10'	12'					X		
87	AME	Adonidia merrillii	Christmas Palm	8"	20'	6'					X		
88	AME	Adonidia merrillii	Christmas Palm	8"	20'	6'					X		
89	AME	Adonidia merrillii	Christmas Palm	8"	20'	6'					X		
90	AME	Adonidia merrillii	Christmas Palm	8"	20'	6'					X		
91	AME	Adonidia merrillii	Christmas Palm	8"	20'	6'					X		
92	AME	Adonidia merrillii	Christmas Palm	8"	20'	6'					X		
93	AME	Adonidia merrillii	Christmas Palm	8"	20'	6'					X		
94	AME	Adonidia merrillii	Christmas Palm	8"	20'	6'					X		
95	AME	Adonidia merrillii	Christmas Palm	8"	20'	6'					X		
96	AME	Adonidia merrillii	Christmas Palm	4"	12'	6'					X		
97	CNU	Cocos nucifera	Coconut Palm	8"	20'	10'					X		
98	CNU	Cocos nucifera	Coconut Palm	8"	20'	10'					X		
99	CNU	Cocos nucifera	Coconut Palm	8"	20'	10'					X		
100	CNU	Cocos nucifera	Coconut Palm	8"	20'	10'					X		
101	CNU	Cocos nucifera	Coconut Palm	8"	20'	10'					X		
102	CNU	Cocos nucifera	Coconut Palm	8"	20'	10'					X		
103	CNU	Cocos nucifera	Coconut Palm	8"	20'	10'					X		
104	FCA	Ficus carica	Fig Tree	12"	12'	10'					X		
105	CNU	Cocos nucifera	Coconut Palm	8"	20'	10'					X		
106	SPA	Sabal palmetto	Palmetto	12"	12'	3'					X		
107	SPA	Sabal palmetto	Palmetto	12"	12'	3'					X		
108	SPA	Sabal palmetto	Palmetto	12"	12'	3'					X		
109	SPA	Sabal palmetto	Palmetto	12"	12'	3'					X		
110	SPA	Sabal palmetto	Palmetto	12"	12'	3'					X		

SUMMARY

Total Number of on site and R.O.W Trees/Palms:	0
Total Number of Trees / Palms to Remain:	0
Total Number of Trees / Palms to Remove:	110
Total Number of Trees / Palms to Relocate:	0
Total Diameter of Trees to removed (sum of inches at DBH):	0

CITY OF MIAMI - ARTICLE 1. DEFINITIONS - 1.4 DEFINITIONS OF LANDSCAPE REQUIREMENTS

Specimen tree: A tree with any individual trunk or a multiple trunk tree, the sum of the diameter trunks having a diameter at breast height (DBH) of eighteen (18) inches or greater. This excludes the following:  
 1. Non-native fruit trees that are cultivate

CITY OF MIAMI - TREE REPLACEMENT CHART (17.6.1.1)

Total diameter of tree(s) to be removed (sum of inches at DBH)	Total number of replacement trees required (where each Replacement Tree is a minimum of 2" DBH x 6' spread in Canopy x 12' in height)	Total number of replacement trees required (where each Replacement Tree is a minimum of 4" DBH x 8' spread in Canopy x 16' in height)	Contribution to Tree Trust Fund
0	0	0	\$0



ANDAZ, MIAMI BEACH  
 4041 COLLINS AVE., MIAMI BEACH, FL 33140  
 HISTORIC PRESERVATION BOARD SUBMITTAL FOR PROPOSED CANOPY

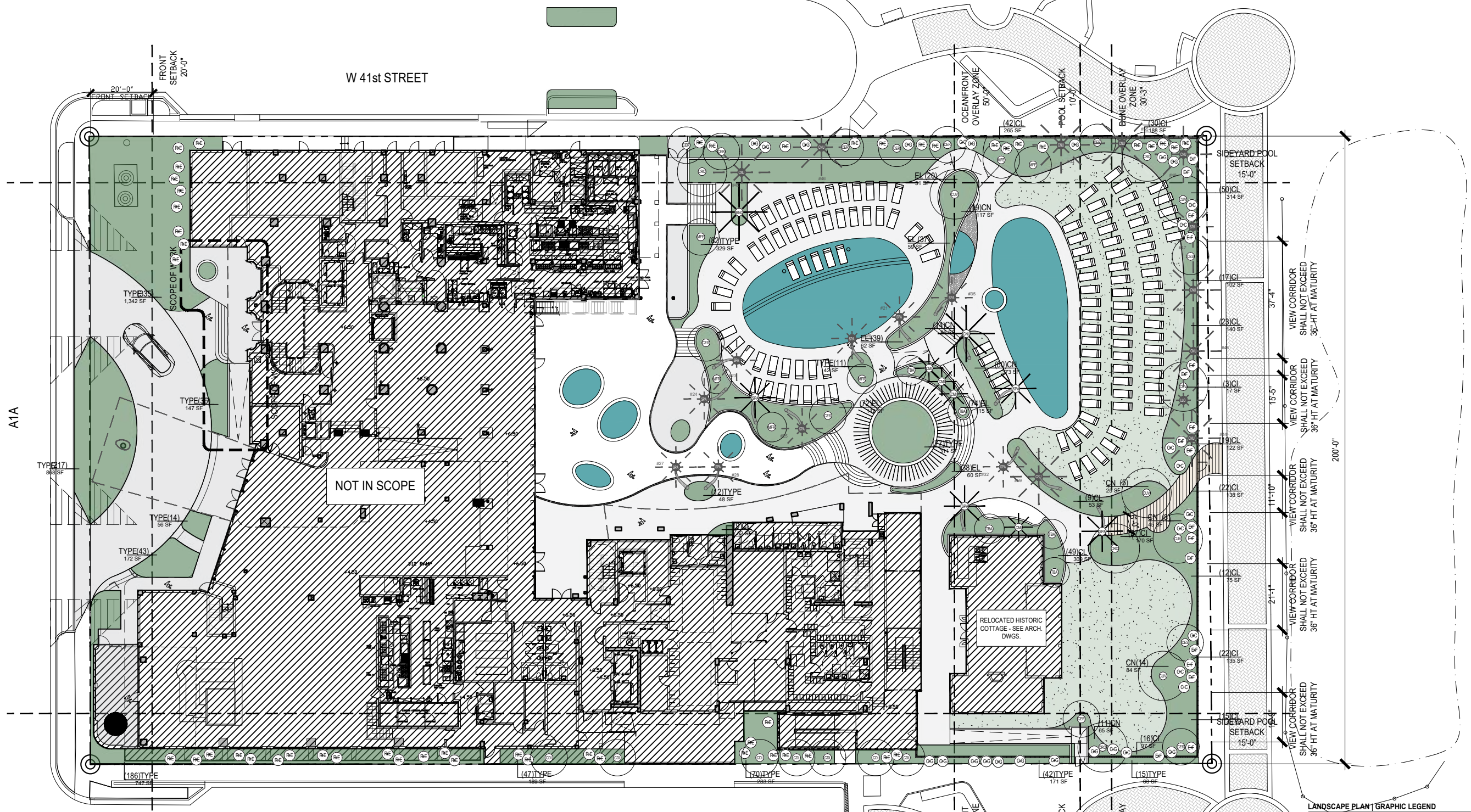
JANUARY 17, 2023: FIRST SUBMITTAL / FEBRUARY 06, 2023: FINAL SUBMITTAL



sheet no.  
**L-3.01**

TREE DISPOSITION LIST

SCALE: AS NOTED

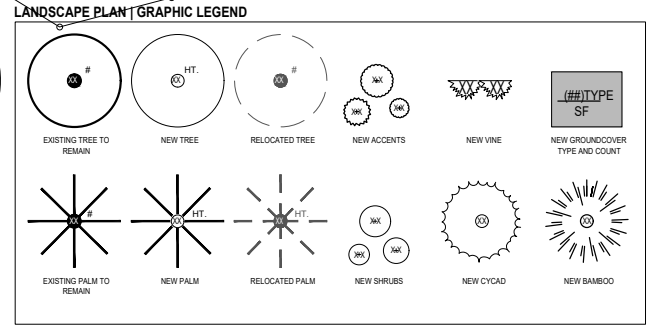


**TOTAL FRONTAGE: 200'-0"**  
**REQ. MIN. OF 50% WINDOWING: 100'-0"**  
**PROVIDED WINDOWING: 100'-2"**

**NOTE: SEE LANDSCAPE LIST LOCATED ON SHEET L-3.11.**

**NOTE: 50% OF ALL SHRUBS IN DUNE PRESERVATION OVERLAY ZONE TO NOT EXCEED 36" IN HEIGHT IN REAR YARD. VIEW CORRIDORS TO BE GRAPHICALLY IDENTIFIED WHEN UNDERSTORY PLANTING PLAN IS DEVELOPED.**

**OVERALL LANDSCAPE PLAN**  
 SCALE: 1/32" = 1'-0"



**ANDAZ, MIAMI BEACH**  
**4041 COLLINS AVE., MIAMI BEACH, FL 33140**  
**HISTORIC PRESERVATION BOARD SUBMITTAL FOR PROPOSED CANOPY**

JANUARY 17, 2023: FIRST SUBMITTAL / FEBRUARY 06, 2023: FINAL SUBMITTAL



sheet no.  
**L-3.10**

**OVERALL LANDSCAPE PLAN**  
 SCALE: AS NOTED

QTY	ABRV.	BOTANICAL NAME	COMMON NAME	SPECIFICATIONS	FL. NATIVE		DROUGHT TOLERANT	
					YES	NO	YES	NO
<b>TREES</b>								
4	CRO	<i>Clusia rosea</i>	Autograph Tree	15' HT., Specimen	X		X	
7	CDI	<i>Coccoloba diversifolia</i>	Pigeon Plum	15 HT.	X		X	
6	CLV	<i>Coccoloba uvifera</i>	Seagrape	18' HT., Multi-Trunk	X		X	
7	CER	<i>Conocarpus erectus</i>	Green Buttonwood	20' HT., Multi-Trunk	X		X	
5	CES	<i>Conocarpus erectus</i> 'Sericeus'	Silver Buttonwood	14' HT., Multi-Trunk	X		X	
3	MFE	<i>Mesua ferrea</i>	Ceylon Ironwood	15' HT.		X	X	
3	MFR	<i>Myrcianthes fragrans</i>	Simpson's Stopper	14' HT., Multi-Trunk	X		X	
5	TBA	<i>Tabebuia bahamensis</i>	Bahama Tabebuia	15' HT.	X		X	
<b>PALMS</b>								
1	BNO	<i>Bismarckia nobilis</i>	Bismark Palm	35' HT.		X	X	
4	CMI	<i>Coccothrinax miraguama</i>	Miraguama Palm			X	X	
1	CNU	<i>Cocos nucifera</i>	Coconut Palm	30' HT.		X	X	
	LLO	<i>Latania loddigesii</i>	Blue Latan Palm			X	X	
	PDA	<i>Phoenix dactylifera</i>	Medjool Date Palm			X	X	
	PSY	<i>Phoenix sylvestris</i>	Wild Date Palm			X	X	
	PSA	<i>Pseudophoenix sargentii</i>	Bucaneer Palm		X		X	
4	SPA	<i>Sabal palmetto</i>	Sabal Palm		X		X	
	TRA	<i>Thrinax radiata</i>	Florida Thatch Palm		X		X	
<b>SHRUBS</b>								
	BH	<i>Baccharis halimifolia</i>	Salt Bush		X		X	
10	CC	<i>Capparis cynophallophora</i>	Jamaica Caper	6' HT., 4' SPR.	X		X	
110	CI	<i>Chrysobalanus icaco</i> 'Horizontal'	Horizontal Cocoplum	7G @ 30" OC	X		X	
19	CG	<i>Clusia guttifera</i>	Small Leaf Clusia	6' HT., 4' SPR.	X		X	
131	CN	<i>Clusia rosea</i> 'Nana'	Dwarf Clusia	7G @ 30" OC	X		X	
255	CL	<i>Croton linearis</i>	Pineland Croton	7G @ 30" OC	X		X	
17	EF	<i>Eugenia foetida</i>	Spanish Stopper	6' HT., 4' SPR.	X		X	
	PL	<i>Psychotria ligustrifolia</i>	Bahama Coffee		X		X	
51	RE	<i>Rhapis excelsa</i>	Lady Palm	6' HT.		X	X	
	SR	<i>Serenoa repens</i> 'Cinera'	Silver Saw Palmetto		X		X	
	TF	<i>Tripsacum floridanum</i>	Dwarf Fakahatchee Grass		X		X	
	ZI	<i>Zamia integrifolia</i>	Coontie		X		X	
<b>ACCENTS</b>								
	AA	<i>Agave attenuata</i>	Spineless Agave			X	X	
	CA	<i>Crinum augustum</i> 'Queen Emma'	Purple Crinum			X	X	
	CR	<i>Cycas revoluta</i>	King Sago			X	X	
	FF	<i>Furcraea foetida</i>	Green False Agave			X	X	
	MD	<i>Monstera deliciosa</i>	Mexican Breadfruit			X	X	
<b>GROUNDCOVERS</b>								
	AG	<i>Arachis glabrata</i>	Perennial Peanut		X		X	
	BF	<i>Bulbine frutescens</i>	Peach Bulbine			X	X	
280	EL	<i>Erondea littoralis</i>	Golden Creeper	3G @ 15" OC	X		X	
	FM	<i>Ficus microcarpa</i> 'Green Island'	Green Island Ficus			X	X	
	LM	<i>Lantana montevidensis</i>	Purple Lantana			X	X	
	NB	<i>Nephrolepis biserrata</i>	Macho Fern		X		X	
	NE	<i>Nephrolepis exaltata</i>	Boston Fern		X		X	
<b>VINES</b>								
	CT	<i>Clerodendrum thomsoniae</i>	Bleeding Heart			X	X	
	IP	<i>Ipomoea pes-caprae</i>	Railroad Vine		X		X	



**ANDAZ, MIAMI BEACH**  
**4041 COLLINS AVE., MIAMI BEACH, FL 33140**  
 HISTORIC PRESERVATION BOARD SUBMITTAL FOR PROPOSED CANOPY

JANUARY 17, 2023: FIRST SUBMITTAL / FEBRUARY 06, 2023: FINAL SUBMITTAL



sheet no.  
**L-3.11**  
 OVERALL LANDSCAPE PLANT LIST

SCALE: AS NOTED

TREES



*Cluisa rosea*  
Autograph Tree



*Coccoloba diversifolia*  
Pigeon Plum



*Coccoloba uvifera*  
Seagrape



*Conocarpus erectus*  
Green Buttonwood



*Conocarpus erectus 'Sericeus'*  
Silver Buttonwood



*Mesua ferrea*  
Ceylon Ironwood



*Tabebuia bahamensis*  
Bahama Tabebuia

PALMS



*Coccothrinax mariguama*  
Mariguama Palm



*Cocos nucifera*  
Coconut Palm



*Latania loddigesii*  
Blue Latan Palm



*Phoenix dactylifera*  
Medjool Date Palm



*Phoenix sylvestris*  
Wild Date Palm



*Pseudophoenix sargentii*  
Buccaneer Palm



*Sabal palmetto*  
Sabal Palm



*Thrinax radiata*  
Florida Thatch Palm

SHRUBS



*Baccharis halimifolia*  
Salt Bush



*Chrysobalanus icaco 'Horizontal'*  
Horizontal Cocoplum



*Clusia guttifera*  
Small Leaf Clusia



*Clusia rosea 'Nana'*  
Dwarf Clusia



*Croton linearis*  
Pineland Croton



*Eugenia foetida*  
Spanish Stopper



*Myrcianthes fragrans*  
Simpson's Stopper



*Psychotria ligustrifolia*  
Bahama Coffee



*Rhapis excelsa*  
Lady Palm



*Serenoa repens 'Cinera'*  
Silver Saw Palmetto



*Tripsacum floridanum*  
Dwarf Fakahatchee Grass



*Zamia integrifolia*  
Coontie

ACCENTS



*Agave attenuata*  
Spineless Agave



*Crinum augustum 'Queen Emma'*  
Purple Crinum



*Cycas revoluta*  
King Sago Palm



*Furcraea foetida*  
Green False Agave



*Monstera deliciosa*  
Mexican Breadfruit



*Arachis glabrata*  
Perennial Peanut



*Bulbine frutescens*  
Peach Bulbine



*Erondea littoralis*  
Golden Creeper



*Ficus microcarpa 'Green Island'*  
Green Island Creeper



*Lantana montevidensis*  
Purple Lantana



*Nephrolepis biserrata*  
Macho Fern



*Nephrolepis exaltata*  
Boston Fern

VINES



*Clerodendrum thomsoniae*  
Bleeding Heart



*Ipomoea pes-caprae*  
Railroad Vine

GROUNDCOVERS



*Arachis glabrata*  
Perennial Peanut



*Bulbine frutescens*  
Peach Bulbine



*Erondea littoralis*  
Golden Creeper



*Ficus microcarpa 'Green Island'*  
Green Island Creeper



*Lantana montevidensis*  
Purple Lantana

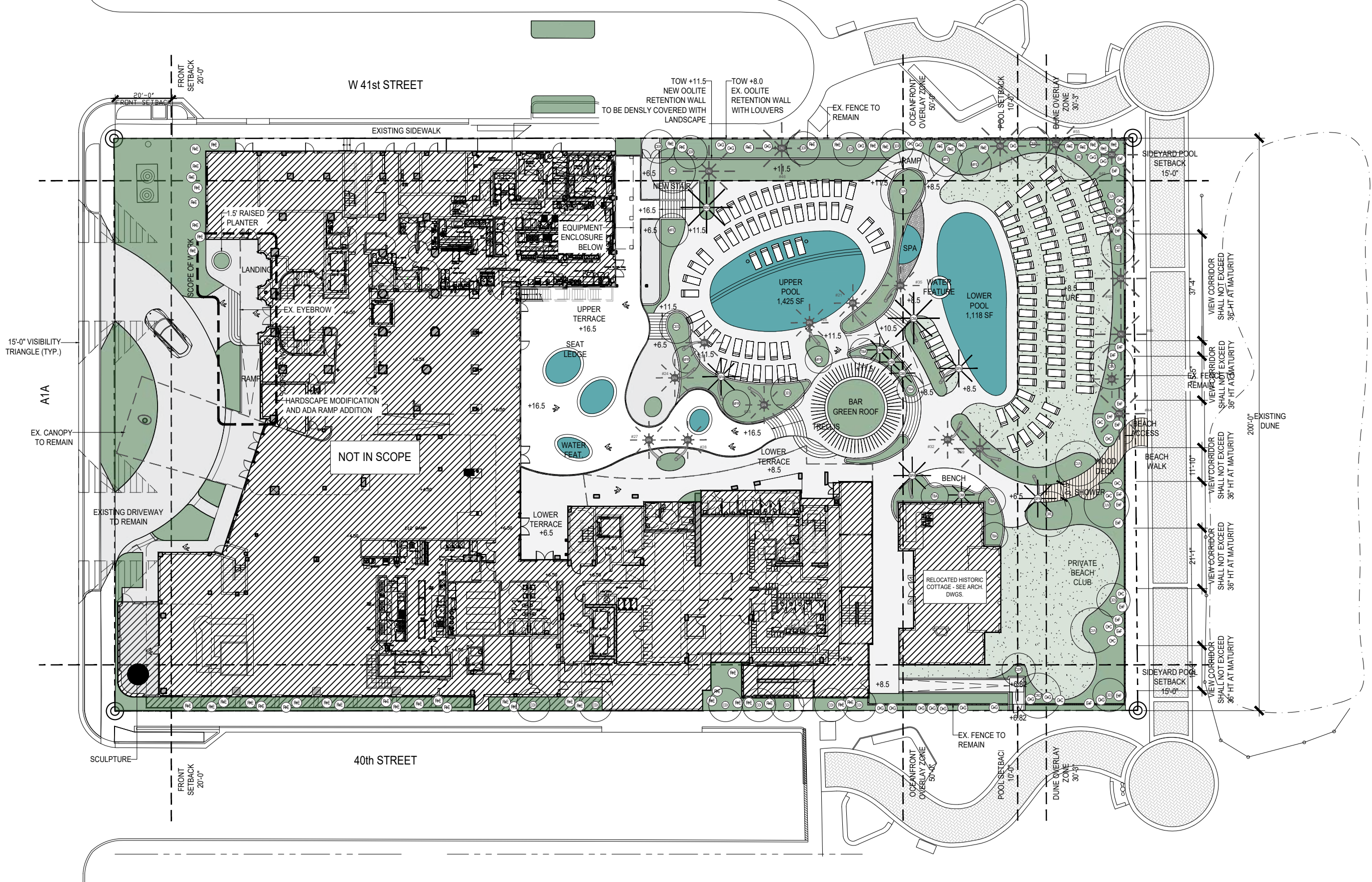


*Nephrolepis biserrata*  
Macho Fern



*Nephrolepis exaltata*  
Boston Fern





**NOTE:** LIGHTING PLAN TO BE DEVELOPED IN SUBSEQUENT SUBMITTALS.



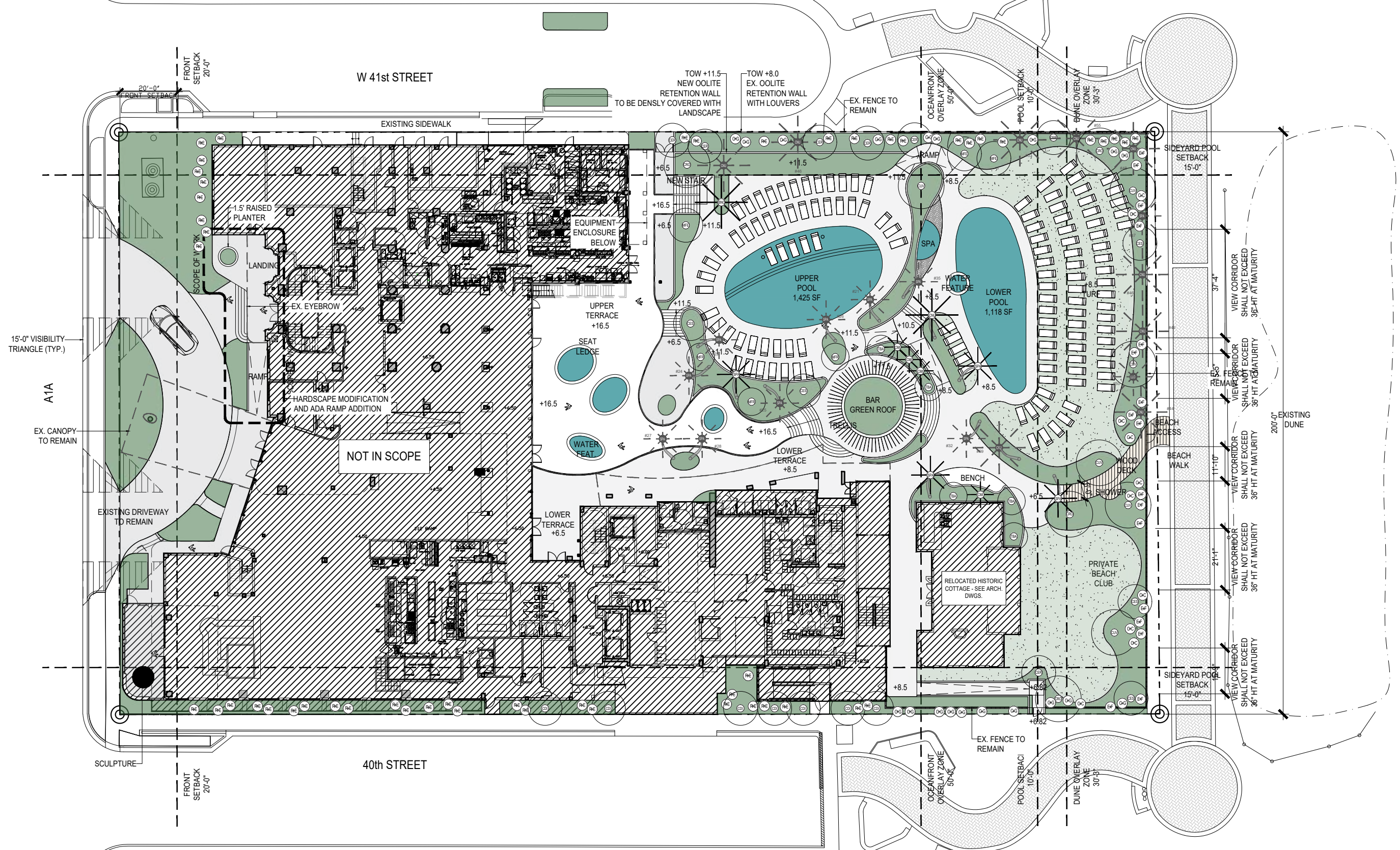
**ANDAZ, MIAMI BEACH**  
**4041 COLLINS AVE., MIAMI BEACH, FL 33140**  
 HISTORIC PRESERVATION BOARD SUBMITTAL FOR PROPOSED CANOPY

JANUARY 17, 2023: FIRST SUBMITTAL / FEBRUARY 06, 2023: FINAL SUBMITTAL



sheet no.  
**L-4.10**  
 OVERALL LANDSCAPE  
 LIGHTING PLAN

SCALE: AS NOTED



NOTE: IRRIGATION PLAN SHALL PROVIDE ADEQUATE IRRIGATION TO ALL PLANTING IN COMPLIANCE WITH THE CITY OF MIAMI BEACH. FULL IRRIGATION PLANS TO BE DEVELOPED FOLLOWING PRE-APPROVALS.



**ANDAZ, MIAMI BEACH**  
**4041 COLLINS AVE., MIAMI BEACH, FL 33140**  
 HISTORIC PRESERVATION BOARD SUBMITTAL FOR PROPOSED CANOPY

JANUARY 17, 2023: FIRST SUBMITTAL / FEBRUARY 06, 2023: FINAL SUBMITTAL

E o A , I n c | 1929 Ponce de Leon Blvd., Coral Gables, Florida 33146 | 3 0 5 . 4 4 4 . 0 9 9 0 | State of Florida Architect of Record Malcolm Berg, AIA License No. AR94424



sheet no.  
**L-5.10**

OVERALL IRRIGATION PLAN

SCALE: AS NOTED



SOUTHWEST AERIAL VIEW



ANDAZ, MIAMI BEACH  
4041 COLLINS AVE., MIAMI BEACH, FL 33140  
HISTORIC PRESERVATION BOARD SUBMITTAL FOR PROPOSED CANOPY  
JANUARY 17, 2023: FIRST SUBMITTAL / FEBRUARY 06, 2023: FINAL SUBMITTAL

E o A , I n c | 1929 Ponce de Leon Blvd., Coral Gables, Florida 33146 | 3 0 5 . 4 4 4 . 0 9 9 0 | State of Florida Architect of Record Malcolm Berg, AIA License No. AR94424



sheet no.  
**L-6.01**

3D RENDERINGS  
SCALE: AS NOTED



NORTH WEST AERIAL VIEW



SOUTHEAST AERIAL VIEW



EAST VIEW FROM UPPER TERRACE



EAST VIEW FROM UPPER POOL DECK



ANDAZ, MIAMI BEACH  
 4041 COLLINS AVE., MIAMI BEACH, FL 33140  
 HISTORIC PRESERVATION BOARD SUBMITTAL FOR PROPOSED CANOPY  
 JANUARY 17, 2023; FIRST SUBMITTAL / FEBRUARY 06, 2023; FINAL SUBMITTAL



sheet no.  
**L-6.02**

3D RENDERINGS  
 SCALE: AS NOTED



AERIAL VIEW OF BAR



GROUND LEVEL VIEW OF BAR



NORTHEAST VIEW OF LOWER POOL DECK