



1691 MICHIGAN AVENUE | DRB-24-1009



BERCOW  
RADELL  
FERNANDEZ  
LARKIN +  
TAPANES

ZONING, LAND USE AND ENVIRONMENTAL LAW





PREVIOUS DESIGN



NEW DESIGN



ESCALA FORMA

rockwellgroup

BLACK



LION

BGAarchitects





VIEW A



VIEW C

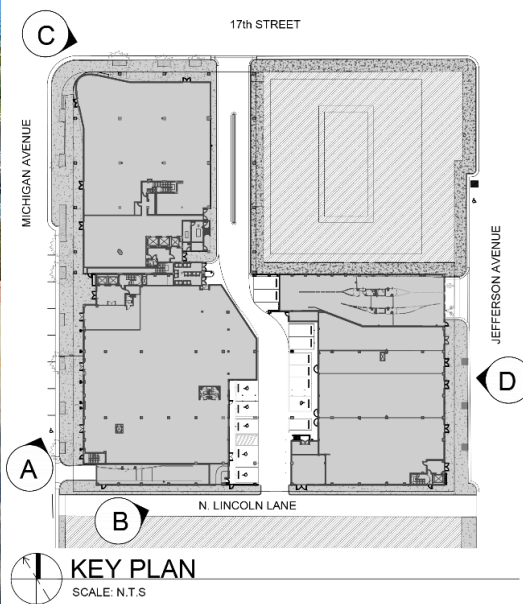


VIEW B



VIEW D

PHOTOS WERE TAKEN ON 01/ 16/ 2024





VIEW A



VIEW C

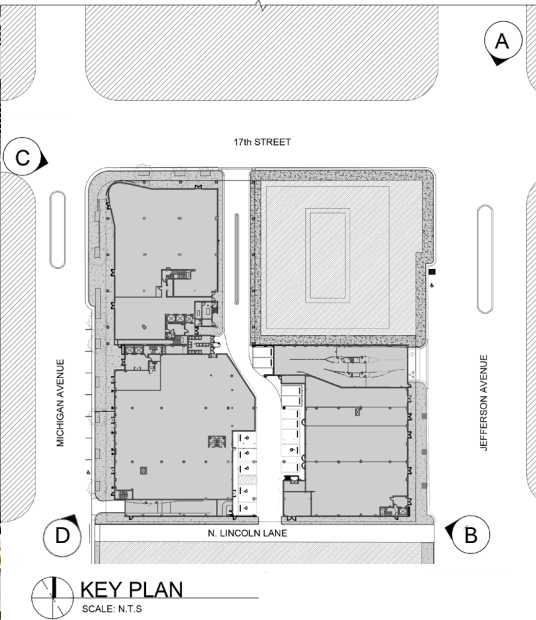


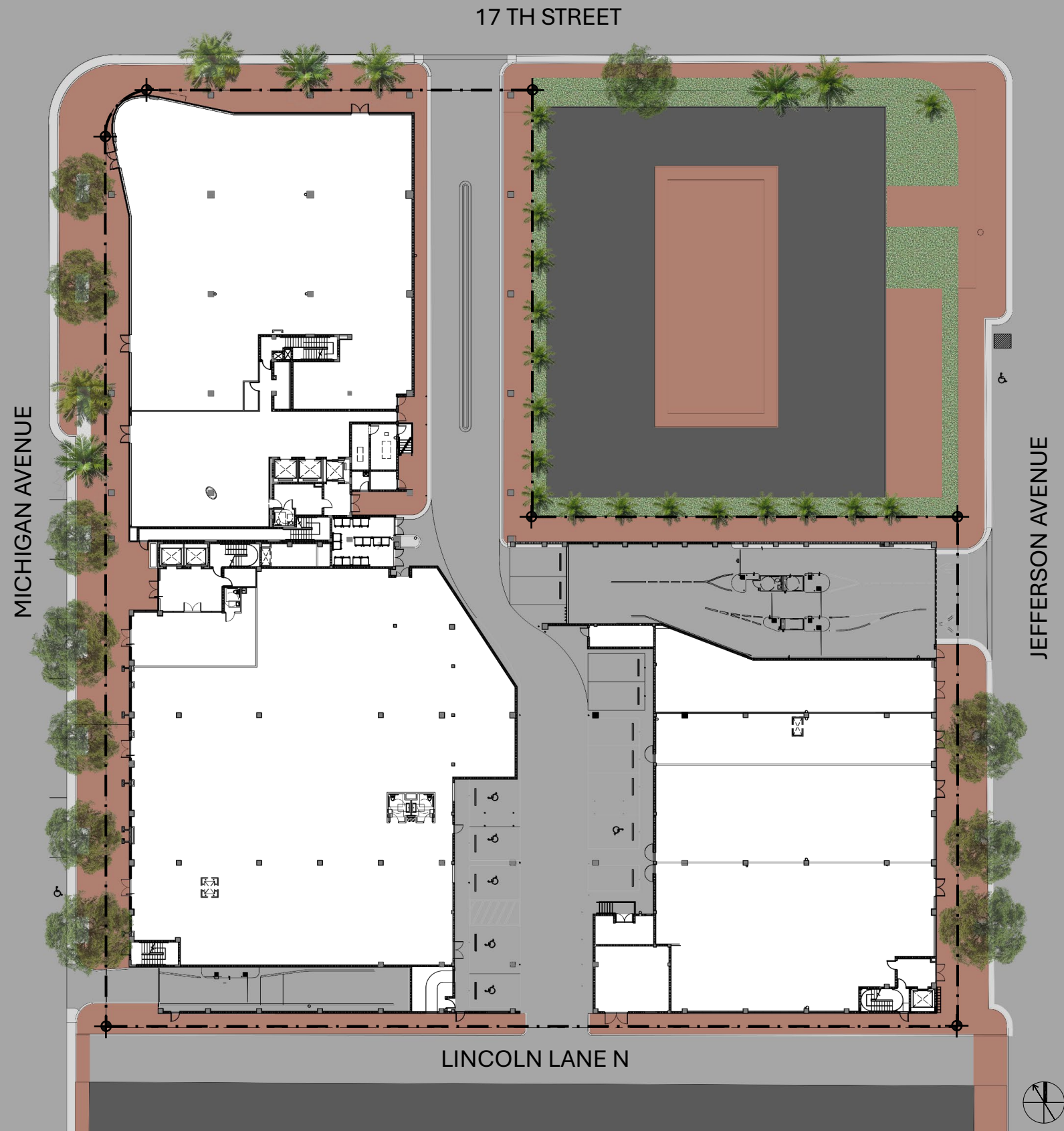
VIEW B



VIEW D

\*PHOTOGRAPHS WERE TAKEN ON 04/ 02/ 2024







  
BERCOW  
RADELL  
FERNANDEZ  
LARKIN +  
TAPANES  
  
ZONING, LAND USE AND ENVIRONMENTAL LAW

ESCALA FORMA

rockwellgroup

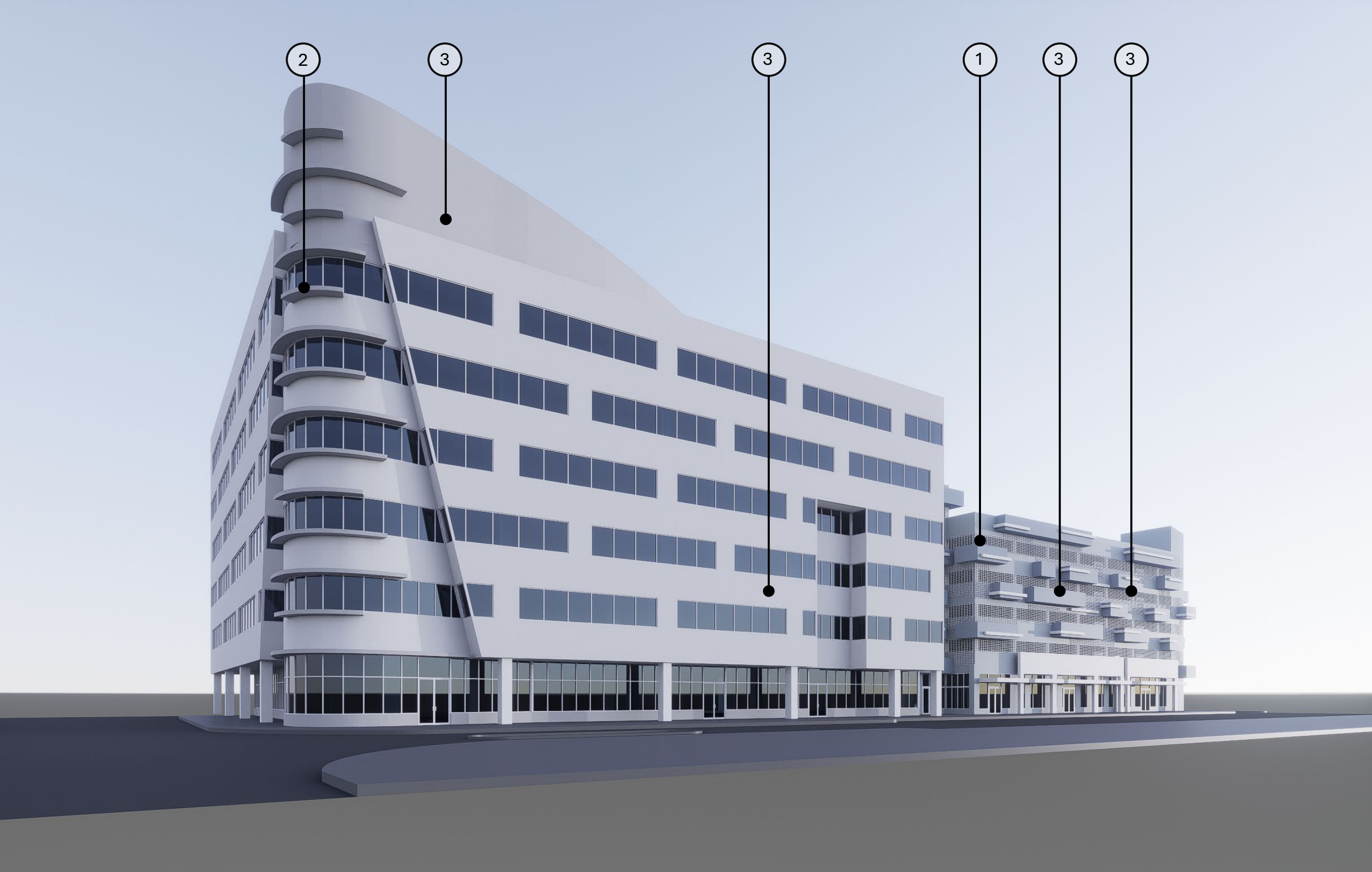
BLACK  LION

BGAarchitects

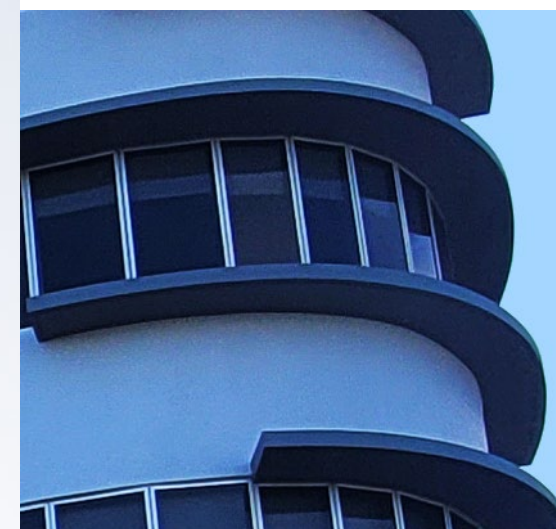








① ALUMINUM GRILL



② OFFICE BUILDING EYEBROW

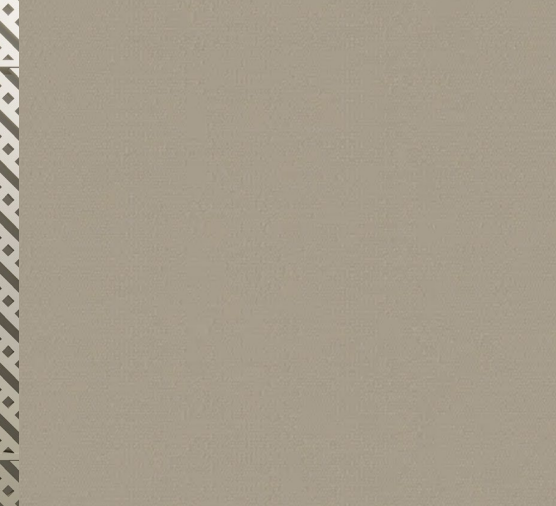


③ SMOOTH STUCCO FINISH

EXISTING MATERIALS



1 CUSTOM METAL PERFORATED SCREEN PANELS



4 PROPOSED FABRIC AWNINGS



2 PROPOSED LIMESTONE VENEER



5 PROPOSED LIGHT SCONCES



3 PROPOSED FINISH ON PLANTER IVORY ROMAN CLAY



6 PROPOSED LIGHT SCONCES

PROPOSED MATERIALS



ESCALA FORMA

rockwellgroup

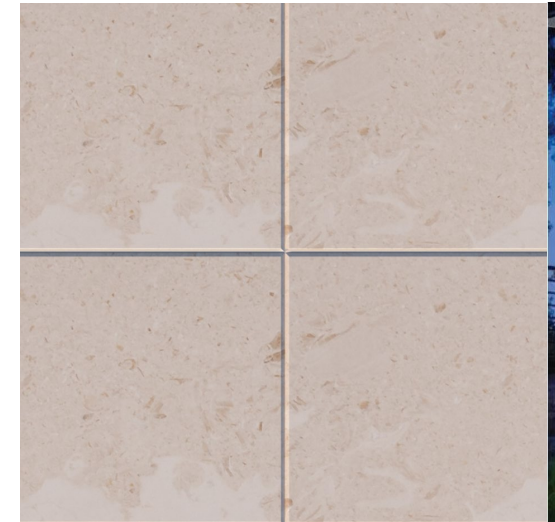


BGAarchitects



① CUSTOM METAL PERFORATED SCREEN PANELS

④ PROPOSED STACKED STONE PANEL



② PROPOSED LIMESTONE VENEER



⑤ PROPOSED LIGHT SCONCES



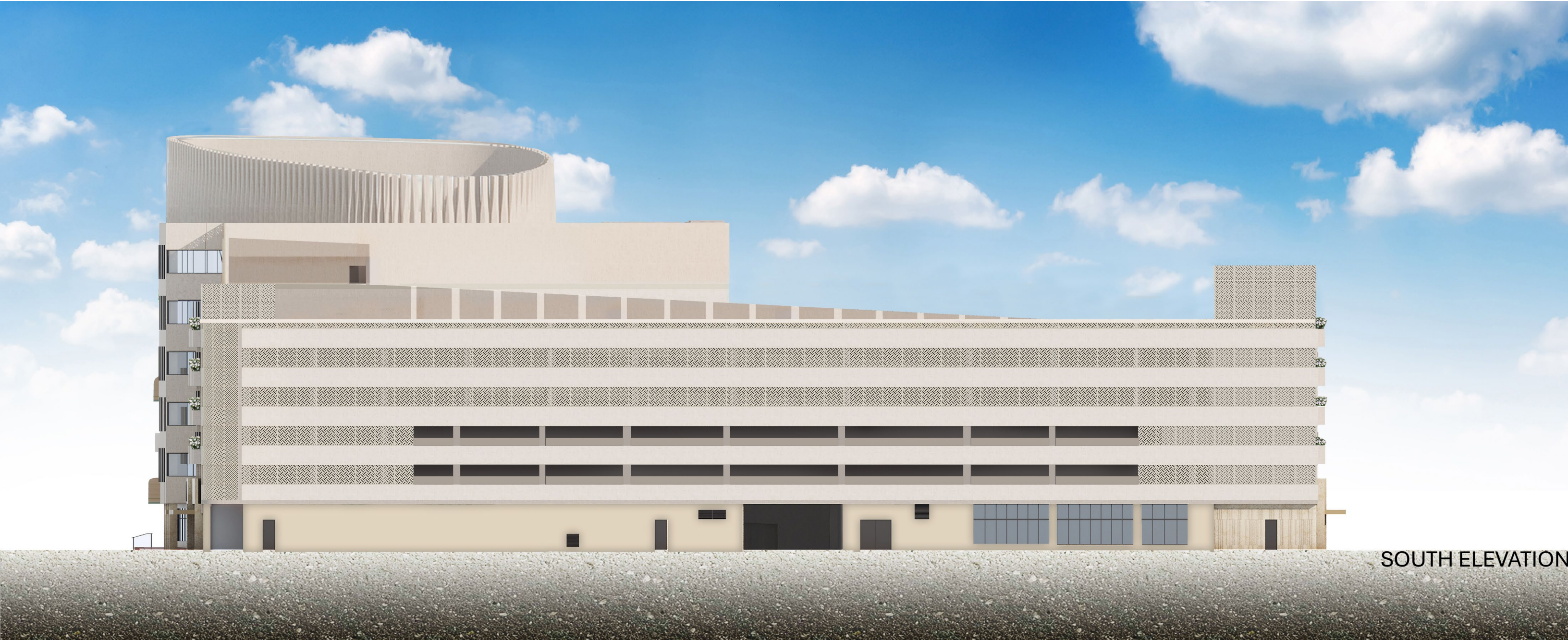
③ PROPOSED FINISH ON PLANTER IVORY ROMAN CLAY

PROPOSED MATERIALS



WEST ELEVATION





SOUTH ELEVATION



EAST ELEVATION



NORTH ELEVATION

BLACK  LION | ESCALA FORMA | **rockwellgroup** |

**BGA**rchitects