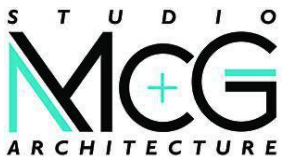


FINAL DESIGN REVIEW BOARD

L001	COVER SHEET
L002	TREE DISPOSITION PLAN
L003	EXISTING TREE SCHEDULE
L004	LANDSCAPE LEGEND AND MITIGATION
L100	SITE HARDSCAPE PLAN
L200	SITE PLANTING PLAN
L201	2ND LEVEL PLANTING PLAN
L202	PLANTING DETAILS
L203	RENDERED SITE PLAN
L204	PLANTING IMAGES
L300	SITE LIGHTING PLAN

NOTE: ARBORIST REPORT SUBMITTED AS A SEPARATE FILE



7500 NE 4th Court
Suite 102
Miami, FL 33138
T: (305) 573-2728

PROJECT NUMBER

2314

PROJECT NAME

WHOLE FOODS
AND
WELLS FARGO
1901 ALTON ROAD
MIAMI BEACH, FL 33141

OWNER

CRESCENT HEIGHTS

FACADE ARCHITECT

OPPENHEIM ARCHITECTURE
AND DESIGN

DRAWING

COVER
SHEET

JUSTINE VELEZ FLORIDA LIC# LA6667391

ALL DRAWINGS AND WRITTEN MATERIAL APPEARING
HEREIN CONSTITUTE THE ORIGINAL AND UNPUBLISHED
WORK OF STUDIO MCG ARCHITECTURE AND
MAY NOT BE DUPLICATED, USED OR DISCLOSED
WITHOUT THE EXPRESS WRITTEN CONSENT OF
STUDIO MCG ARCHITECTURE & PLANNING, INC. © 2020

SCALE: 1/32" = 1'-0"

DRAWN: AJ

CHECK: JV

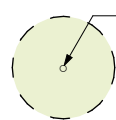
DATE: 06/10/24

SHEET NUMBER

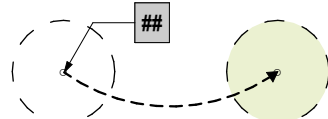
L001

KEY

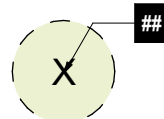
TREE TO REMAIN



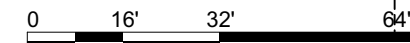
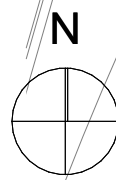
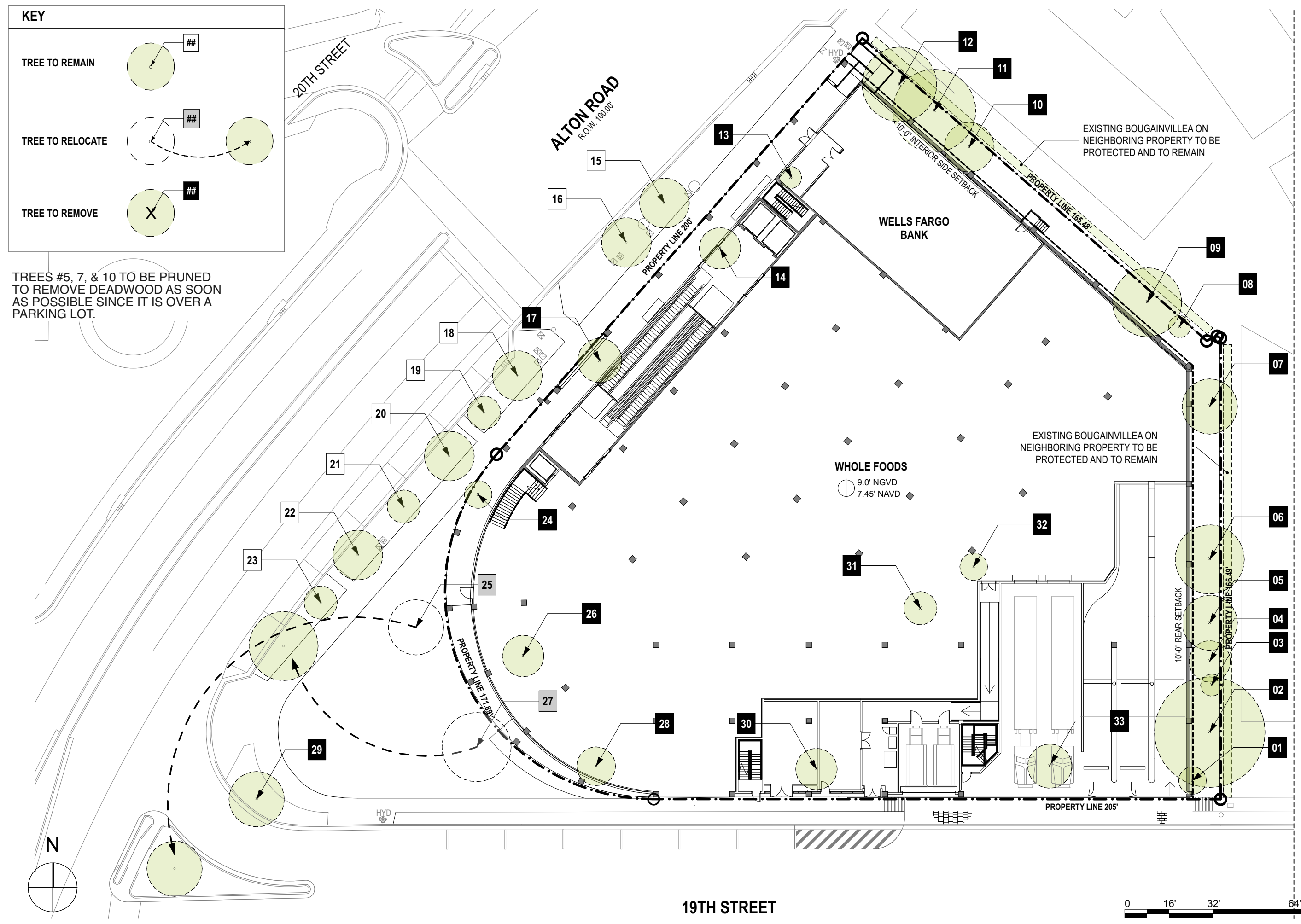
TREE TO RELOCATE



TREE TO REMOVE



TREES #5, 7, & 10 TO BE PRUNED TO REMOVE DEADWOOD AS SOON AS POSSIBLE SINCE IT IS OVER A PARKING LOT.



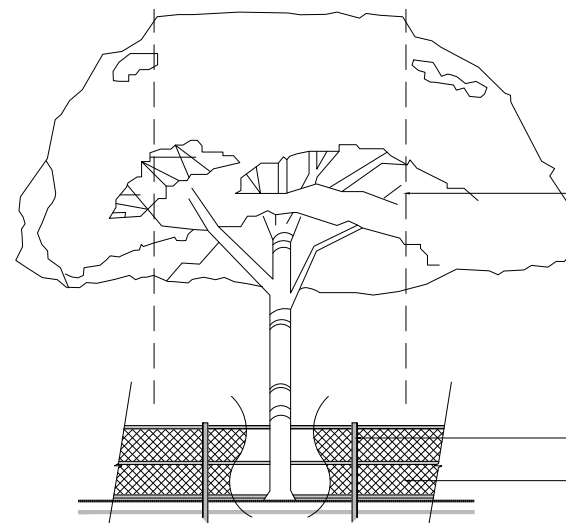
EXISTING
TREE
SCHEDULE

Existing Tree Schedule									
Symbol	ID	Botanical Name	Common Name	DBH	Height	Spread	Native	Status	Remarks
(X)	01	Washingtonia robusta	Mexican Fan Palm	14"	50'	10'	N	REMOVE	
(X)	02	Acacia auriculiformis	Earleaf acacia	30"	45'	40'	N	REMOVE	Prohibited Tree*
(X)	03	Washingtonia robusta	Mexican Fan Palm	8"	8'	8'	N	REMOVE	
(X)	04	Acacia auriculiformis	Earleaf acacia	10.5"	30'	15'	N	REMOVE	Prohibited Tree*
(X)	05	Acacia auriculiformis	Earleaf acacia	17"	33'	20'	N	REMOVE	LARGE DEADWOOD; PRUNE TO REMOVE DEADWOOD ASAP Prohibited Tree*
(X)	06	Acacia auriculiformis	Earleaf acacia	12"	30'	25'	N	REMOVE	Prohibited Tree*
(X)	07	Acacia auriculiformis	Earleaf acacia	18.5"	40'	20'	N	REMOVE	LARGE DEADWOOD; PRUNE TO REMOVE DEADWOOD ASAP Prohibited Tree*
(X)	08	Tabebuia heterophylla	Pink Trumpet Tree	6"	20'	8'	N	REMOVE	
(X)	09	Acacia auriculiformis	Earleaf acacia	19.5"	40'	25'	N	REMOVE	Prohibited Tree*
(X)	10	Acacia auriculiformis	Earleaf acacia	24"	40'	18'	N	REMOVE	LARGE DEADWOOD; PRUNE TO REMOVE DEADWOOD ASAP Prohibited Tree*
(X)	11	Acacia auriculiformis	Earleaf acacia	24"	40'	30'	N	REMOVE	Prohibited Tree*
(X)	12	Acacia auriculiformis	Earleaf acacia	12"	40'	27'	N	REMOVE	Prohibited Tree*
(X)	13	Washingtonia robusta	Mexican Fan Palm	16"	40'	8'	N	REMOVE	
(X)	14	Roystonea regia	Royal Palm	14"	50'	15'	Y	REMOVE	
(X)	15	Conocarpus erectus 'sericeus'	Silver Buttonwood	8"	15'	18'	Y	REMAIN	
(X)	16	Conocarpus erectus 'sericeus'	Silver Buttonwood	8"	15'	18'	Y	REMAIN	
(X)	17	Roystonea regia	Royal Palm	16"	45'	16'	Y	REMOVE	
(X)	18	Quercus virginiana	Live Oak	6"	20'	18'	Y	REMAIN	
(X)	19	Phoenix sylvestris	Silvester Date Palm	12"	25'	12'	N	REMAIN	
(X)	20	Quercus virginiana	Live Oak	9"	20'	18'	Y	REMAIN	
(X)	21	Phoenix sylvestris	Silvester Date Palm	12"	25'	12'	N	REMAIN	

Existing Tree Schedule									
Symbol	ID	Botanical Name	Common Name	DBH	Height	Spread	Native	Status	Remarks
(X)	22	Quercus virginiana	Live Oak	6"	18'	18'	Y	REMAIN	
(X)	23	Phoenix sylvestris	Silvester Date Palm	14"	25'	12'	N	REMAIN	
(X)	24	Roystonea regia	Royal Palm	14"				REMOVE	
(X)	25	Phoenix dactylifera	Date Palm	18"	28'	20'	N	RELOCATE	
(X)	26	Sabal palmetto	Sabal Palm	13"	25'	15'	Y	REMOVE	
(X)	27	Quercus virginiana	Live Oak	12"	30'	25'	Y	RELOCATE	
(X)	28	Roystonea regia	Royal Palm	12.5"	40'	14'	Y	REMOVE	
(X)	29	Veitchia arecina	Montgomery Palm 'double'	7"	25'	20'		REMOVE	
(X)	30	Roystonea regia	Royal Palm	14"	50'	15'	Y	REMOVE	
(X)	31	Washingtonia robusta	Mexican Fan Palm	14"	40'	12'	N	REMOVE	
(X)	32	Syagrus romanzoffiana	Queen Palm	8"	25'	10'	N	REMOVE	
(X)	33	Roystonea regia	Royal Palm	17"	50'	16'	Y	REMOVE	

TREE/PALM PROTECTION FENCES SHALL BE CONSTRUCTED PRIOR TO ANY CONSTRUCTION ACTIVITY INCLUDING GRUBBING FOR ALL TREES/PALMS THAT ARE TO REMAIN, BE PROTECTED OR BE RELOCATED

NO ACTIVITY OR DISTURBANCE SHOULD OCCUR WITHIN THE FENCED AREAS, INCLUDING VEHICLE USE, STORAGE OF MATERIALS, DUMPING OF LIQUIDS OR MATERIALS, GRADE CHANGES, GRUBBING, AND MECHANICAL TRENCHING FOR IRRIGATION, ELECTRICAL, LIGHTING, ETC.



IN NO CASE SHALL THE FENCE BE INSTALLED LESS THAN TEN FEET FROM THE TRUNK

TREE + PALM PROTECTION BARRIERS TO EXTEND BEYOND THE 'DRIPLINE' OR TO THE 'CRITICAL ROOT ZONE AREA' OF ALL TREES/PALMS TO BE PROTECTED. EXTEND WHERE NECESSARY TO PROTECT TREE CANOPY ROOTS

BARRIERS SHALL BE A MINIMUM OF FOUR FEET HIGH, AND SHALL BE CONSTRUCTED OF CONTINUOUS CHAIN LINK FENCE WITH METAL POSTS AT EIGHT-FOOT SPACING OR 2"x4" POSTS WITH THREE EQUALLY SPACED 2"x4" RAILS. POSTS MAY BE SHIFTED TO AVOID ROOTS.

PROTECTION DETAIL NOTE:
CONTRACTOR TO INSTALL 'TREE/PALM PROTECTION FENCE BARRIERS' AROUND ALL EXISTING TREES OR PALMS AT THE START OF THE PROJECT. BARRIERS TO REMAIN IN PLACE THROUGHOUT THE DURATION OF THE PROJECT AND SHOULD NOT BE REMOVED OR DROPPED FOR ANY REASON WITHOUT AUTHORIZATION FROM THE CITY OF MIAMI BEACH URBAN FORESTER + PLANNING + ZONING DEPARTMENT

C.M.B. TREE / PALM PROTEC. DETAIL

NOTE:

TREES #5, 7, & 10 TO BE PRUNED TO REMOVE DEADWOOD AS SOON AS POSSIBLE SINCE THEY ARE OVER A PARKING LOT.

CITY OF MIAMI BEACH LANDSCAPE LEGEND

INFORMATION REQUIRED TO BE PERMANENTLY AFFIXED TO PLANS

Zoning District CD-1 Lot Area 55,377 Acres 1.27

OPEN SPACE

- A. Square feet of required Open Space as indicated on site plan:
Lot Area = 55,377 s.f. x 5.98 % = 3,312 s.f.
- B. Square feet of parking lot open space required as indicated on site plan:
Number of parking spaces _____ x 10 s.f. parking space =
- C. Total square feet of landscaped open space required: A+B=

	REQUIRED/ ALLOWED	PROVIDED
A.	3,312	3,312
B.	N/A	N/A
C.	3,312	2,913

LAWN AREA CALCULATION

- A. Square feet of landscaped open space required
- B. Maximum lawn area (sod) permitted= 3,312 % x 20% s.f.

A.		
B.	662	0

TREES

- A. Number of trees required per lot or net lot acre, less existing number of trees meeting minimum requirements=
22 trees x 1.27 net lot acres - number of existing trees=
- B. % Natives required: Number of trees provided x 30% =
- C. % Low maintenance / drought and salt tolerant required:
Number of trees provided x 50%=
- D. Street Trees (maximum average spacing of 20' o.c.)
576.96 linear feet along street divided by 20'=
- E. Street tree species allowed directly beneath power lines:
(maximum average spacing of 20' o.c.):
_____ linear feet along street divided by 20'=

A.	28	16 Ground 7 On structure
B.	8	23
C.	14	23
D.	29	6 Existing = 31 25 Proposed
E.	N/A	N/A

SHRUBS

- A. Number of shrubs required: Sum of lot and street trees required x 12=
- B. % Native shrubs required: Number of shrubs provided x 50%=

A.	684	694
B.	347	394

LARGE SHRUBS OR SMALL TREES

- A. Number of large shrubs or small trees required: Number of required shrubs x 10%=
- B. % Native large shrubs or small trees required: Number of large shrubs or small trees provided x 50%=

A.	68	103
B.	39	103

NOTE:

Street Trees will comply with Florida Fancy requirements. All other planting materials shall meet or exceed Florida Grade # 1 as specified in Grades and Standards for Nursery Plants and Part II, Palms and Trees, current edition

TOTAL TREES AND PALMS TO BE REMOVED

TREES

- 183" DBH
1 Tabebuia heterophylla
9 Acacia auriculiformis (prohibited tree)

REQUIRED MITIGATION

- 60 SMALL TREES (2" DBH x 6' SPREAD x 12' HEIGHT) OR,
30 LARGE TREES (4" DBH x 8' SPREAD x 16' HEIGHT) OR,
\$60,000 CONTRIBUTION TO TREE TRUST FUND

PALMS

- 4 Washingtonia robusta
6 Roystonea regia
1 Veitchia arecina
1 Syagrus romanzoffiana
1 Sabal Palm

Sec. 46-61. (c) The removal of a palm shall be replaced with one canopy tree at 12 feet overall height with a two-inch DBH.

REQUIRED MITIGATION

- 13 SMALL TREES (2" DBH x 12' HEIGHT) OR,
6.5 LARGE TREES (4" DBH x 16' HEIGHT) OR,
\$13,000 CONTRIBUTION TO TREE TRUST FUND

PROPOSED TREES. SEE PLANTING PLANS

SMALL TREES: 7
7 Annona glabra

LARGE TREES: 41
6 Coccoloba diversifolia *
5 Ilex cassine *
5 Pimenta racemosa *
8 Conocarpus erectus *
5 Conocarpus erectus sericeus *
12 Taxodium distichum *

* = Native trees

REQUIRED MITIGATION

73 SMALL TREES

TOTAL PROPOSED

7 SMALL TREES + 41 LARGE TREES
(89 SMALL TREES EQUIVALENT)

EXCEEDING BY 16 SMALL TREES OR 8 LARGE TREES EQUIVALENT

**SITE
HARDSCAPE
PLAN**

JUSTINE VELEZ FLORIDA LIC# LA6667391
ALL DRAWINGS AND WRITTEN MATERIAL APPEARING
HEREIN CONSTITUTE THE ORIGINAL AND UNPUBLISHED
WORK OF STUDIO MCG ARCHITECTURE AND
MAY NOT BE DUPLICATED, USED OR DISCLOSED
WITHOUT THE EXPRESS WRITTEN CONSENT OF
STUDIO MCG ARCHITECTURE & PLANNING, INC. © 2020

SCALE: 1/32" = 1'-0"

DRAWN: AJ

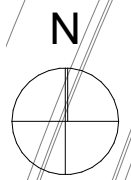
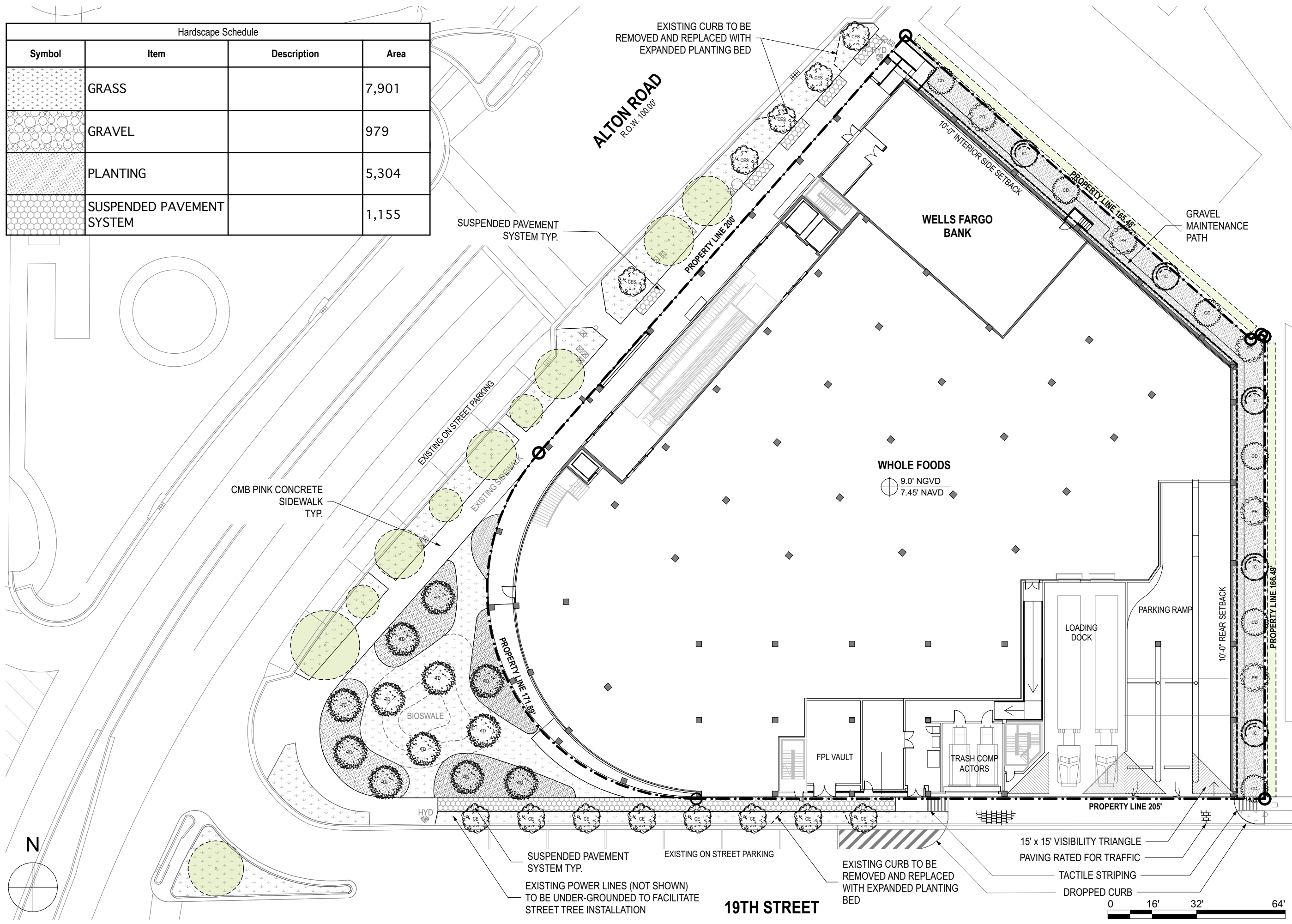
CHECK: JV

DATE: 06/10/24

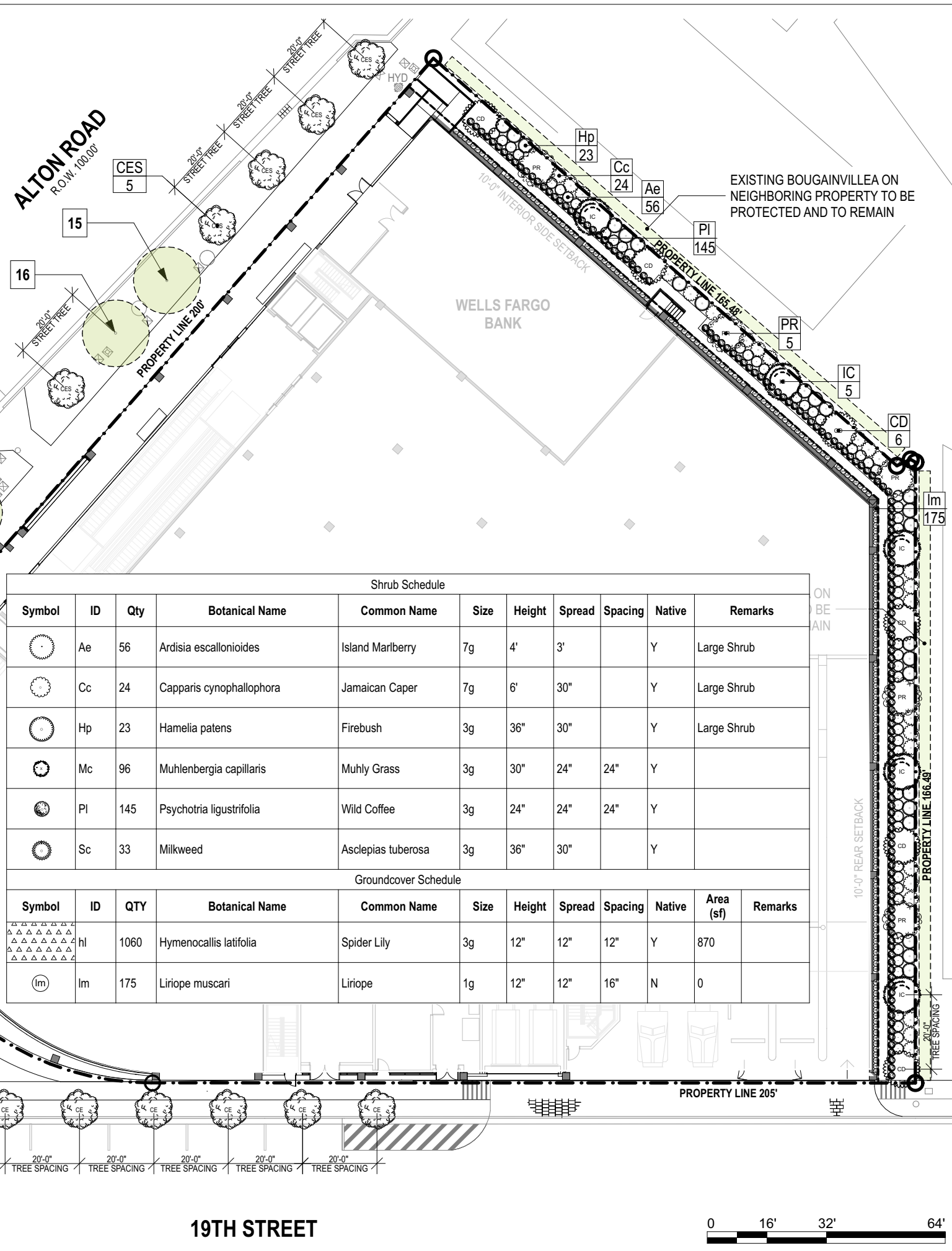
SHEET NUMBER

L100

Hardscape Schedule			
Symbol	Item	Description	Area
	GRASS		7,901
	GRAVEL		979
	PLANTING		5,304
	SUSPENDED PAVEMENT SYSTEM		1,155

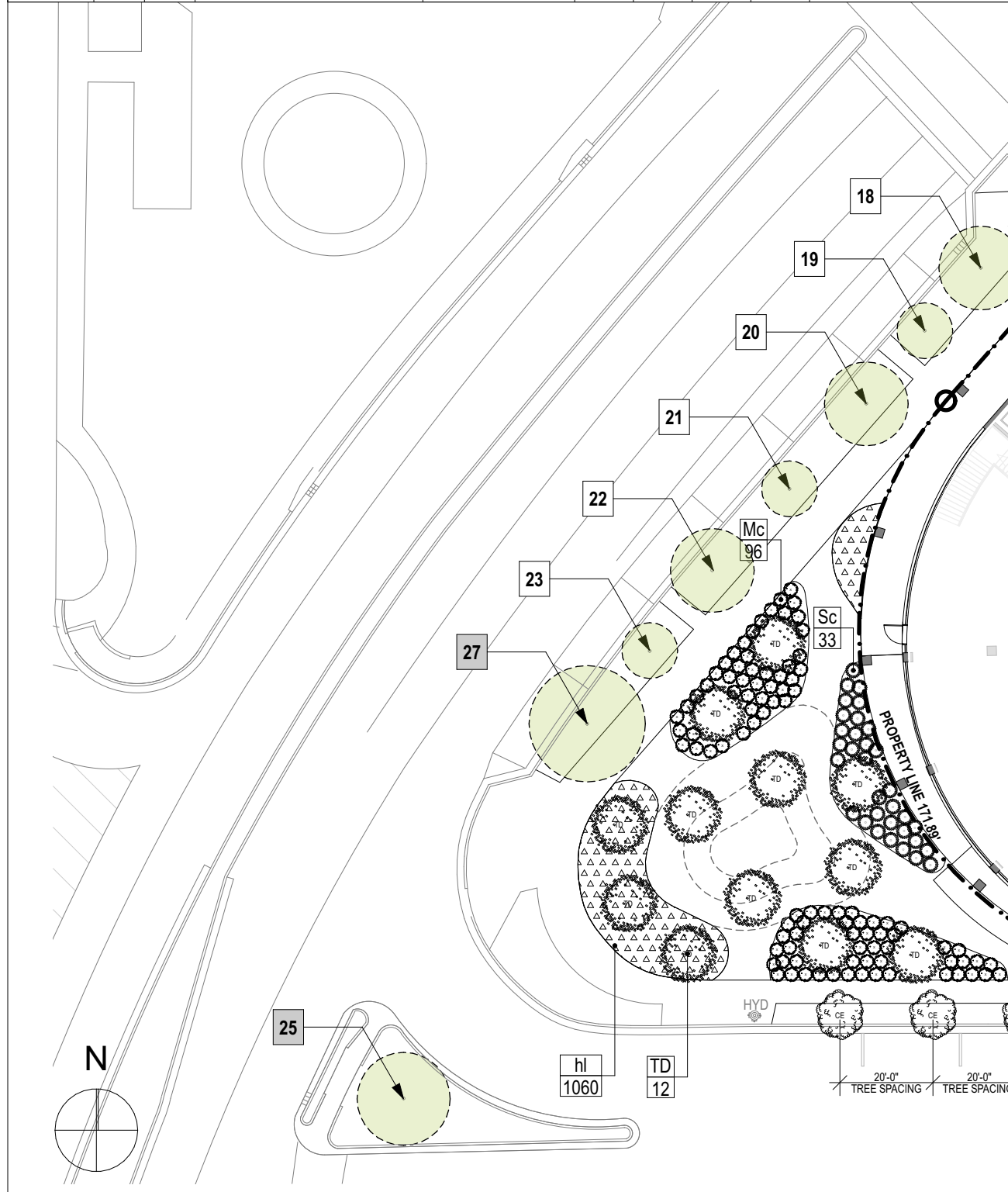


Tree Schedule									
Symbol	ID	Qty	Botanical Name	Common Name	DBH	Height	Spread	Native	Remarks
	CD	6	Coccoloba diversifolia	Pigeon Plum	4"	16' min	10'	Y	Standard Trunk
	CE	8	Conocarpus erectus	Green Buttonwood	4"	16' min	10'	Y	Florida Fancy - Street Tree - Standard Trunk
	CES	5	Conocarpus erectus 'serica'	Silver Buttonwood	4"	16' min	10'	Y	Florida Fancy - Street Tree - Standard Trunk
	IC	5	Ilex cassine	Dahoon Holly	4"	16' min	10'	Y	Standard Trunk
	PR	5	Pimenta racemosa	Bayrum Tree	4"	16' min	8'	Y	Standard Trunk
	TD	12	Taxodium distichum	Bald Cypress	4"	16' min	10'	Y	Florida Fancy - Street Tree - Standard Trunk

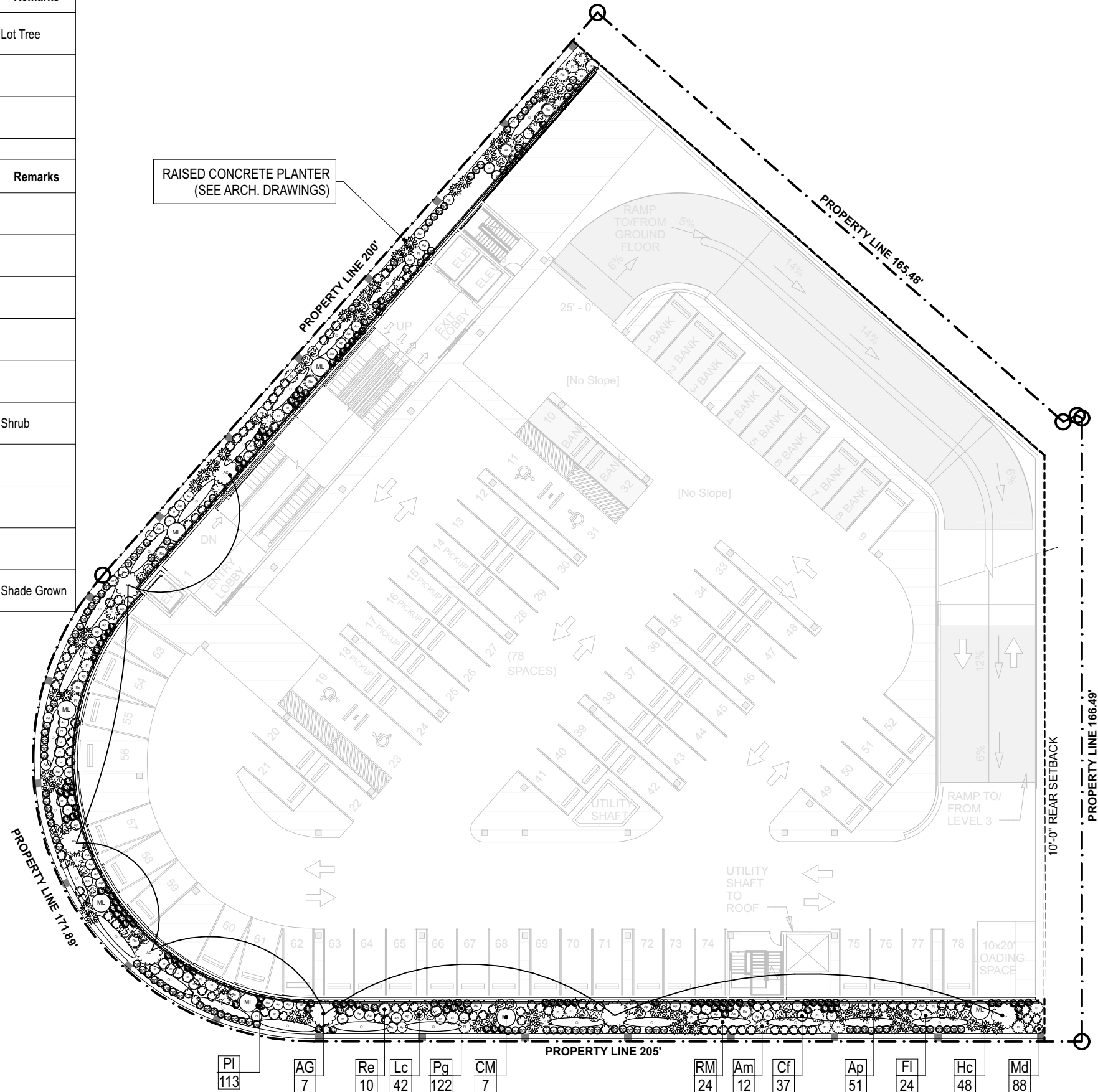


Shrub Schedule										
Symbol	ID	Qty	Botanical Name	Common Name	Size	Height	Spread	Spacing	Native	Remarks
	Ae	56	Ardisia escallonioides	Island Marberry	7g	4'	3'		Y	Large Shrub
	Cc	24	Capparis cynophallophora	Jamaican Caper	7g	6'	30"		Y	Large Shrub
	Hp	23	Hamelia patens	Firebush	3g	36"	30"		Y	Large Shrub
	Mc	96	Muhlenbergia capillaris	Muhly Grass	3g	30"	24"	24"	Y	
	PI	145	Psychotria ligustrifolia	Wild Coffee	3g	24"	24"	24"	Y	
	Sc	33	Milkweed	Asclepias tuberosa	3g	36"	30"		Y	

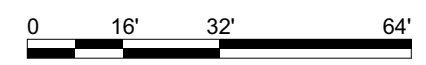
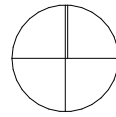
Groundcover Schedule											
Symbol	ID	QTY	Botanical Name	Common Name	Size	Height	Spread	Spacing	Native	Area (sf)	Remarks
	hl	1060	Hymenocallis latifolia	Spider Lily	3g	12"	12"	12"	Y	870	
	Im	175	Liriope muscari	Liriope	1g	12"	12"	16"	N	0	



2nd Level Tree Schedule									
Symbol	ID	Qty	Botanical Name	Common Name	DBH	Height	Spread	Native	Remarks
	AG	7	Annona glabra	Pond Apple Tree	2.5"	12'	6'	Y	Lot Tree
	CM	7	Caryota mitis	Fishtail Palm		24'	8'	N	
	RM	24	Ravenala madagascariensis	Traveller Tree		24'	12'	N	
2nd Level Shrub Schedule									
Symbol	ID	Qty	Botanical Name	Common Name	Size	Height	Spread	Native	Remarks
	Am	12	Alocasia macrorrhiza	Black Stem Elephant Ear	7g			N	
	Ap	51	Alpinia purpurata 'Pink'	Pink Ginger	15g	5'		N	
	Cf	37	Cordyline fruticosa 'Pink Diamond'	Pink Diamond Cordyline	7g	30"	30"	N	
	Fl	24	Ficus lyrata	Fiddle Leaf Fig	7g			N	
	Hc	48	Heliconia caribaea x bihai 'Jacquini'	Heliconia caribaea x bihai 'Jacquini'		8'		N	
	Lc	42	Leea coccinea 'Rubra'	West Indian Holly	7g	36"	30"	N	Shrub
	Md	88	Monstera deliciosa	Swiss Cheese Vine	7g	4'	3'	N	
	Pg	122	Philodendron gloriosum	Philodendron gloriosum	3g	2'	2'	N	
	Pl	113	Psychotria ligustrifolia	Wild Coffee	3g	24"	24"	Y	
	Re	10	Rhapis excelsa	Lady Palm		6'		N	Shade Grown



N



7500 NE 4th Court
Suite 102
Miami, FL 33138
T: (305) 573-2728

PROJECT NUMBER
2314

PROJECT NAME
WHOLE FOODS
AND
WELLS FARGO
1901 ALTON ROAD
MIAMI BEACH, FL 33141

OWNER
CRESCENT HEIGHTS

FACADE ARCHITECT
OPPENHEIM ARCHITECTURE
AND DESIGN

DRAWING

2ND LEVEL PLANTING PLAN

JUSTINE VELEZ FLORIDA LIC# LA6667391
ALL DRAWINGS AND WRITTEN MATERIAL APPEARING
HEREIN CONSTITUTE THE ORIGINAL AND UNPUBLISHED
WORK OF STUDIO MCG ARCHITECTURE AND
MAY NOT BE DUPLICATED, USED OR DISCLOSED
WITHOUT THE EXPRESS WRITTEN CONSENT OF
STUDIO MCG ARCHITECTURE & PLANNING, INC. (c) 2020

SCALE: 1/32" = 1'-0"

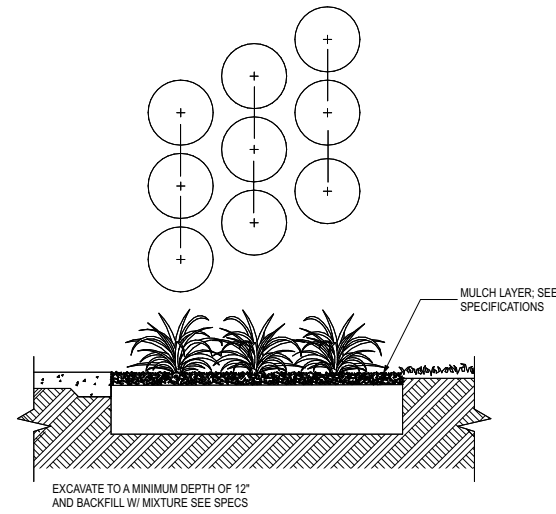
DRAWN: AJ

CHECK: JV

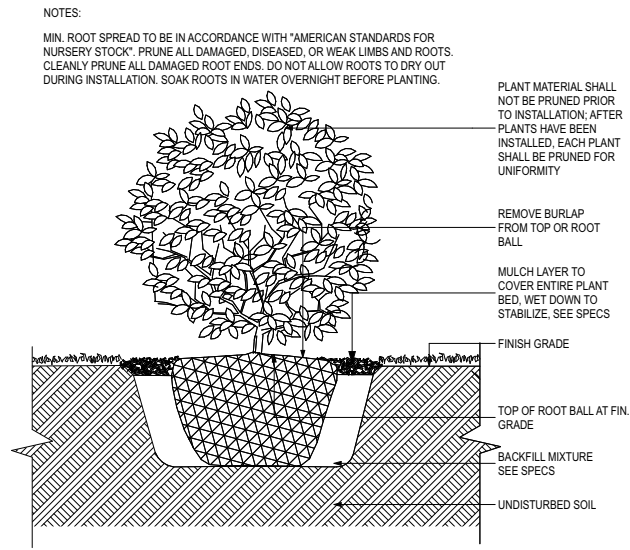
DATE: 06/10/24

SHEET NUMBER

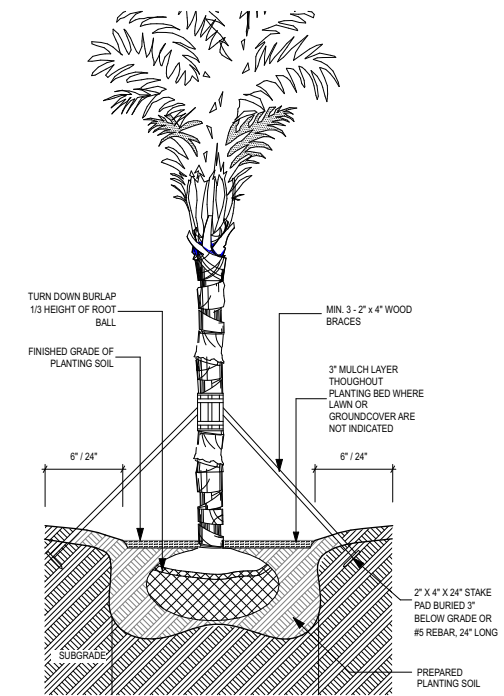
L201



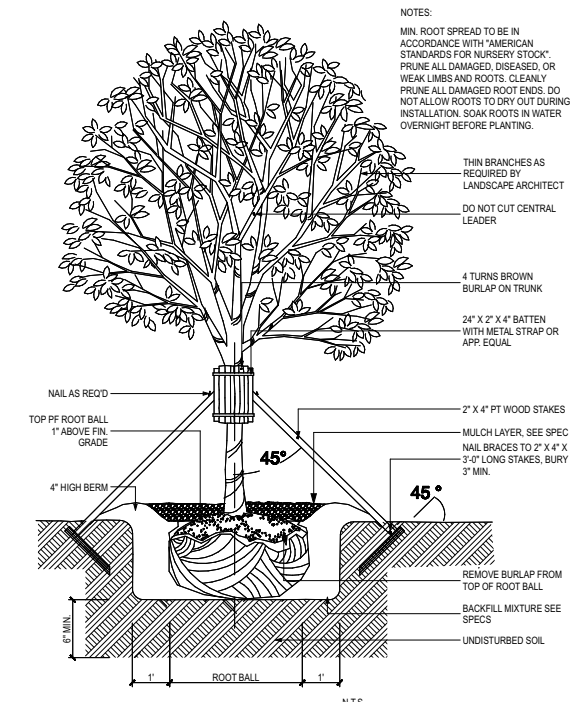
5
L202
GROUNDCOVER SPACING DETAIL
NOT TO SCALE



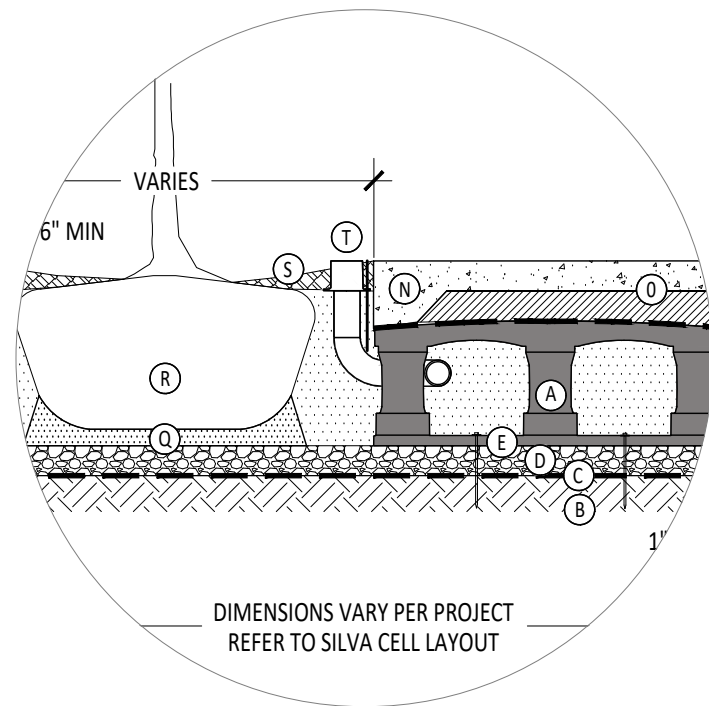
4
L202
SHRUB DETAIL
NOT TO SCALE



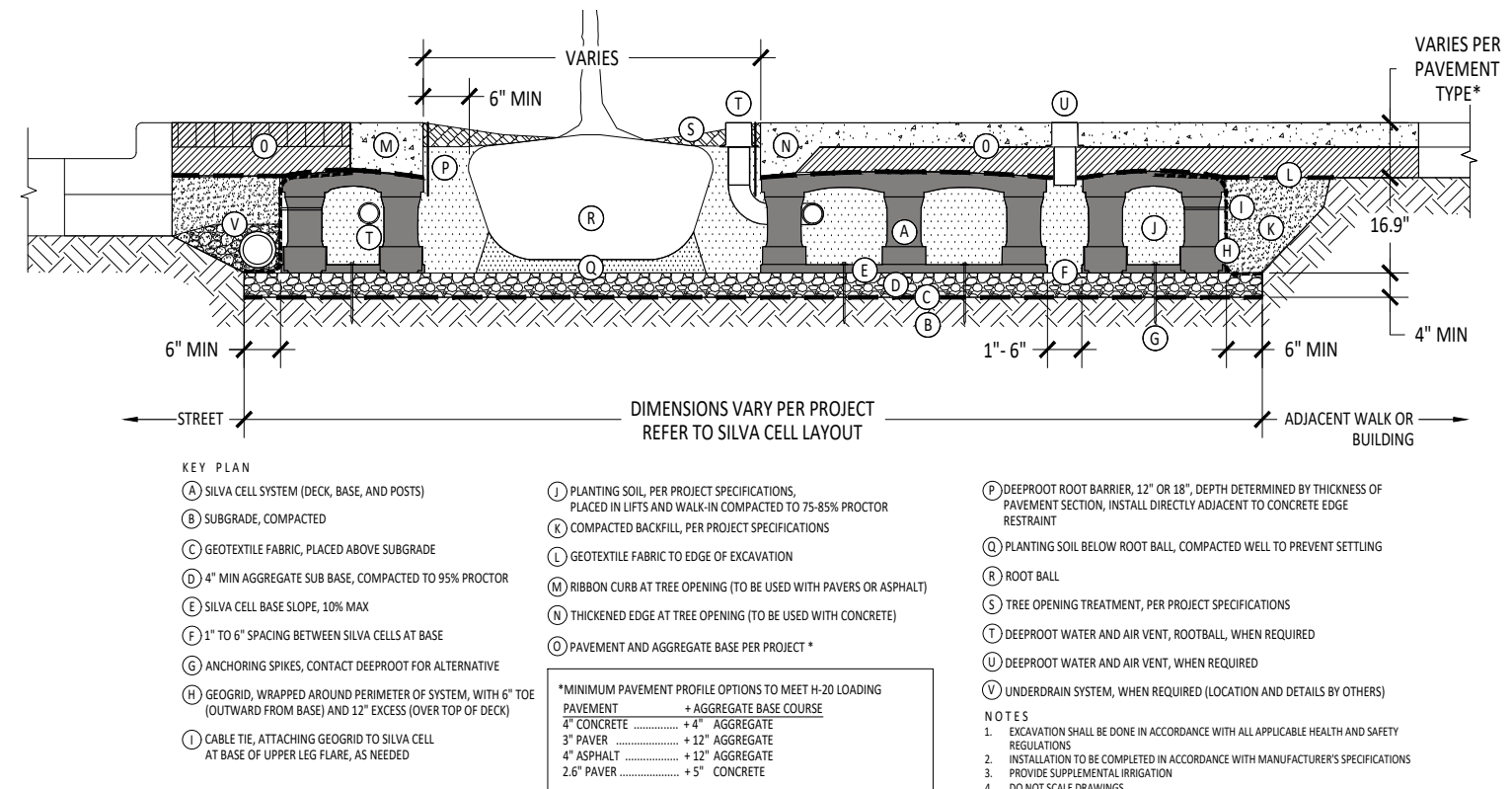
3
L202
PALM PLANTING DETAIL
NOT TO SCALE



2
L202
LARGE TREE STAKE DETAIL
NOT TO SCALE



1A
L202
TYPICAL SILVA CELL DETAIL
NOT TO SCALE



1
L202
TYPICAL SILVA CELL DETAIL
NOT TO SCALE

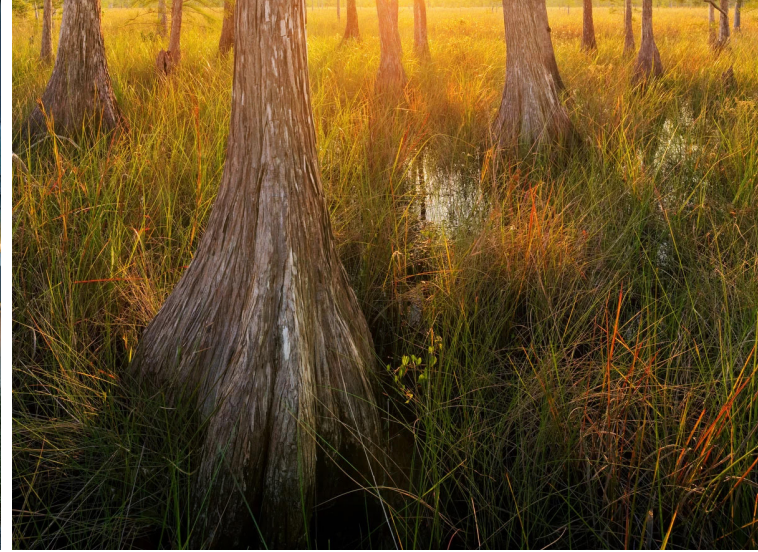
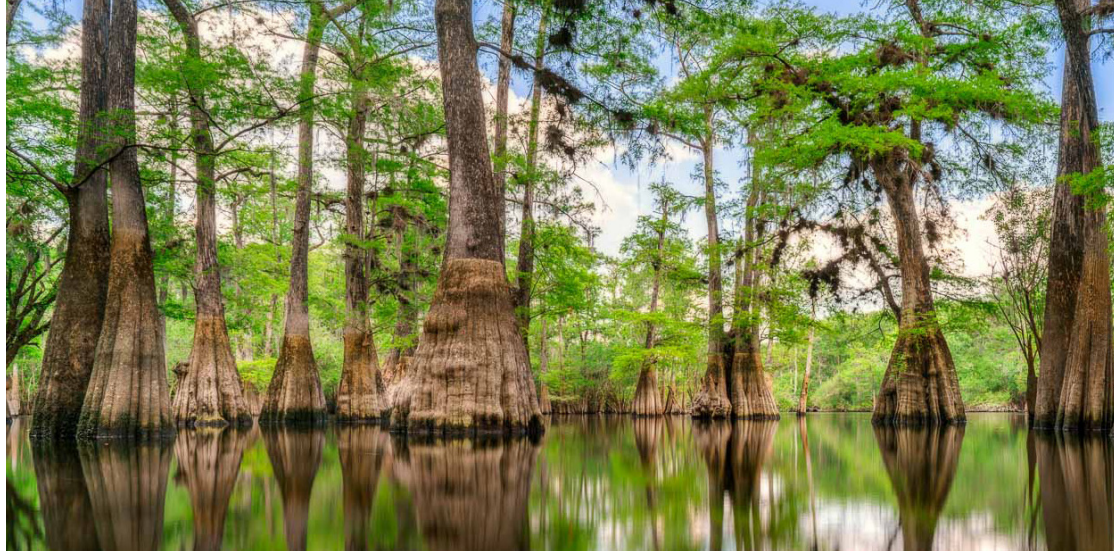


**RENDERED
 SITE PLAN**

JUSTINE VELEZ FLORIDA LIC# LA6667391
 ALL DRAWINGS AND WRITTEN MATERIAL APPEARING
 HEREIN CONSTITUTE THE ORIGINAL AND UNPUBLISHED
 WORK OF STUDIO MCG ARCHITECTURE AND
 MAY NOT BE DUPLICATED, USED OR DISCLOSED
 WITHOUT THE EXPRESS WRITTEN CONSENT OF
 STUDIO MCG ARCHITECTURE & PLANNING, INC. © 2020

SCALE:	NTS
DRAWN:	AJ
CHECK:	JV
DATE:	06/10/24

CYPRESS TREES



Bald Cypress | *Taxodium distichum*

GROUNDCOVERS



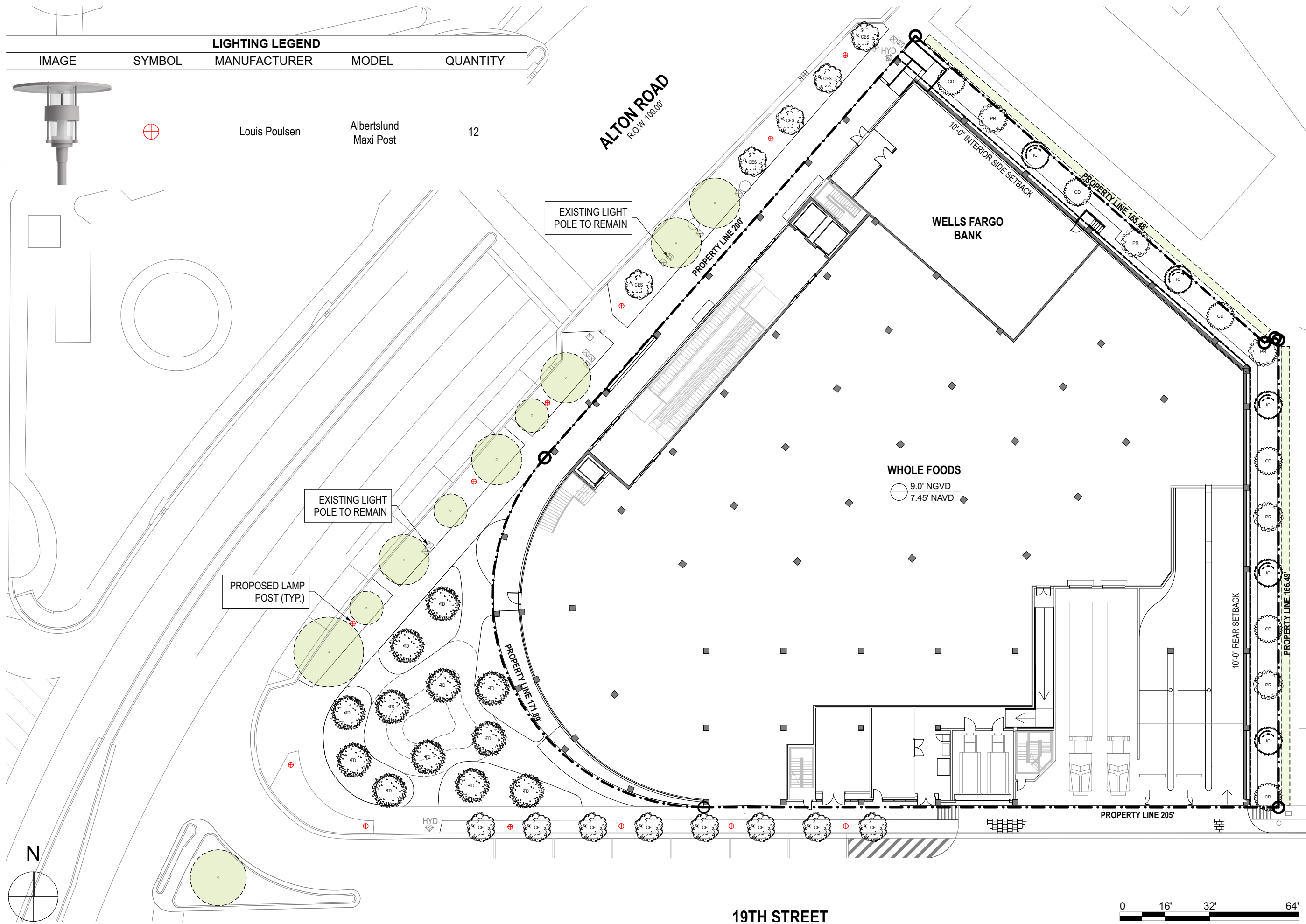
Muhly Grass | *Muhlenbergia capillaris*



Spider Lily | *Hymenocallis latifolia*



Milkweed | *Asclepias tuberosa*



LIGHTING LEGEND				
IMAGE	SYMBOL	MANUFACTURER	MODEL	QUANTITY
		Louis Poulsen	Albertslund Maxi Post	12

