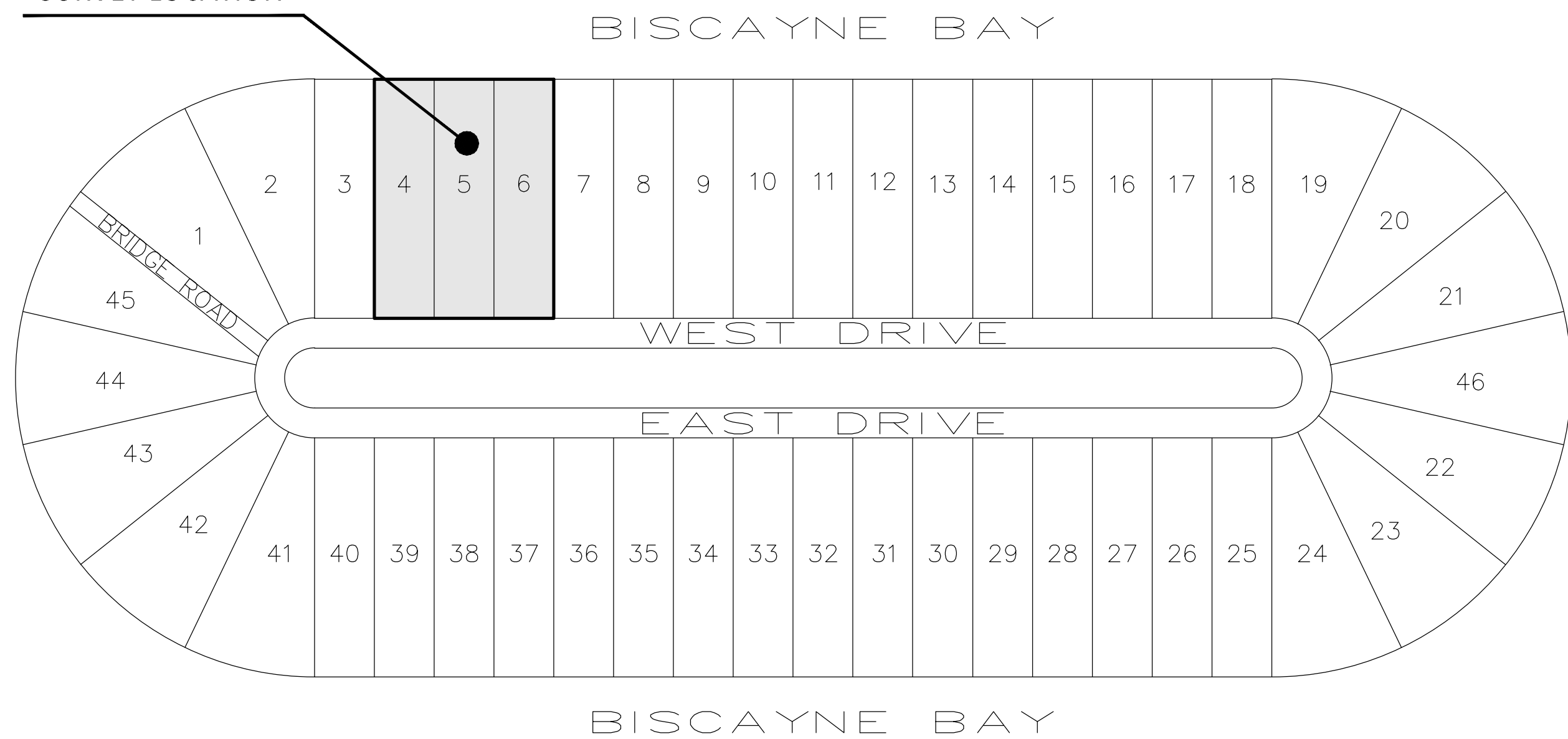


**SURVEY LOCATION**



**LOCATION MAP**

Scale: 1" = 200'

**TREE LEGEND**

**Lot 4**

Tree #	Common Name	Botanical Name	DBH (inches)	Height (feet)	Diameter canopy (feet)
401	Frontal Palm	Roystonea sp.	21	21	17
404	Canary Island Date Palm	Phoenix canariensis	22	18	19
405	Canary Island Date Palm	Phoenix canariensis	21	19	24
406	Canary Island Date Palm	Phoenix canariensis	18	15	20
408	Canary Island Date Palm	Phoenix canariensis	26	25	22
409	Canary Island Date Palm	Phoenix canariensis	28	25	22
420	Canary Island Date Palm	Phoenix canariensis	28	26	22
431	Canary Island Date Palm	Phoenix canariensis	28	24	22
432	Canary Island Date Palm	Phoenix canariensis	26	25	22
433	Gumbo Limbo	Bumelia gumbolii	19	28	25
434	Severed Date Palm Clump	Phoenix canariensis	30	1	30
435	Canary Island Date Palm	Phoenix canariensis	27	25	25
436	Blowhard Palm	Phoenix sp.	12	14	10
437	Chinese Fan Palm	Livistina chinensis	8	14	11
438	Blowhard Palm	Bumelia gumbolii	12	25	18
439	Chinese Fan Palm	Livistina chinensis	9	12	8
440	Chinese Fan Palm	Livistina chinensis	10	20	12
441	Spaghnum	Ligustrum japonicum	6	11	6
442	Shrub Apple	Malus sp.	20	35	35
443	"This is 'character' tree with several open canopy, and should be preserved."				
444	Red Larian Palm	Livistina chinensis	8	14	11
445	Blowhard Palm	Bumelia gumbolii	9	14	11
446	Blowhard Palm	Bumelia gumbolii	4	20	14
447	Severed Date Palm Clump	Phoenix canariensis	14	1	14
448	Blowhard Palm	Bumelia gumbolii	3	21	14
449	Chinese Fan Palm double	Livistina chinensis	17	24	15
450	Canary Island Date Palm	Phoenix canariensis	36	1	36
451	Chinese Fan Palm	Livistina chinensis	8	14	11
452	Red Larian Palm	Livistina chinensis	9	14	11
453	Chinese Fan Palm	Livistina chinensis	14	24	18
454	Chinese Fan Palm	Livistina chinensis	9	14	11
455	Blowhard Palm	Bumelia gumbolii	15	40	45
456	Canary Island Date Palm	Phoenix canariensis	22	22	19
457	Canary Island Date Palm	Phoenix canariensis	24	24	14
458	Phoenix sp.	Phoenix sp.	9	17	15
459	Blowhard Palm	Bumelia gumbolii	17	26	10
460	Blowhard Palm	Bumelia gumbolii	28	30	45
461	Blowhard Palm	Bumelia gumbolii	28	30	45
462	Blowhard Palm	Bumelia gumbolii	28	30	45
463	Blowhard Palm	Bumelia gumbolii	28	30	45
464	Blowhard Palm	Bumelia gumbolii	28	30	45
465	Blowhard Palm	Bumelia gumbolii	28	30	45
466	Blowhard Palm	Bumelia gumbolii	28	30	45
467	Blowhard Palm	Bumelia gumbolii	28	30	45
468	Blowhard Palm	Bumelia gumbolii	28	30	45
469	Blowhard Palm	Bumelia gumbolii	28	30	45
470	Blowhard Palm	Bumelia gumbolii	28	30	45
471	Blowhard Palm	Bumelia gumbolii	28	30	45
472	Blowhard Palm	Bumelia gumbolii	28	30	45
473	Blowhard Palm	Bumelia gumbolii	28	30	45
474	Blowhard Palm	Bumelia gumbolii	28	30	45
475	Blowhard Palm	Bumelia gumbolii	28	30	45
476	Blowhard Palm	Bumelia gumbolii	28	30	45
477	Blowhard Palm	Bumelia gumbolii	28	30	45
478	Blowhard Palm	Bumelia gumbolii	28	30	45
479	Blowhard Palm	Bumelia gumbolii	28	30	45
480	Blowhard Palm	Bumelia gumbolii	28	30	45
481	Blowhard Palm	Bumelia gumbolii	28	30	45
482	Blowhard Palm	Bumelia gumbolii	28	30	45
483	Blowhard Palm	Bumelia gumbolii	28	30	45
484	Blowhard Palm	Bumelia gumbolii	28	30	45
485	Blowhard Palm	Bumelia gumbolii	28	30	45
486	Blowhard Palm	Bumelia gumbolii	28	30	45
487	Blowhard Palm	Bumelia gumbolii	28	30	45
488	Blowhard Palm	Bumelia gumbolii	28	30	45
489	Blowhard Palm	Bumelia gumbolii	28	30	45
490	Blowhard Palm	Bumelia gumbolii	28	30	45
491	Blowhard Palm	Bumelia gumbolii	28	30	45
492	Blowhard Palm	Bumelia gumbolii	28	30	45
493	Blowhard Palm	Bumelia gumbolii	28	30	45
494	Blowhard Palm	Bumelia gumbolii	28	30	45
495	Blowhard Palm	Bumelia gumbolii	28	30	45
496	Blowhard Palm	Bumelia gumbolii	28	30	45
497	Blowhard Palm	Bumelia gumbolii	28	30	45
498	Blowhard Palm	Bumelia gumbolii	28	30	45
499	Blowhard Palm	Bumelia gumbolii	28	30	45
500	Blowhard Palm	Bumelia gumbolii	28	30	45

**Lot 5**

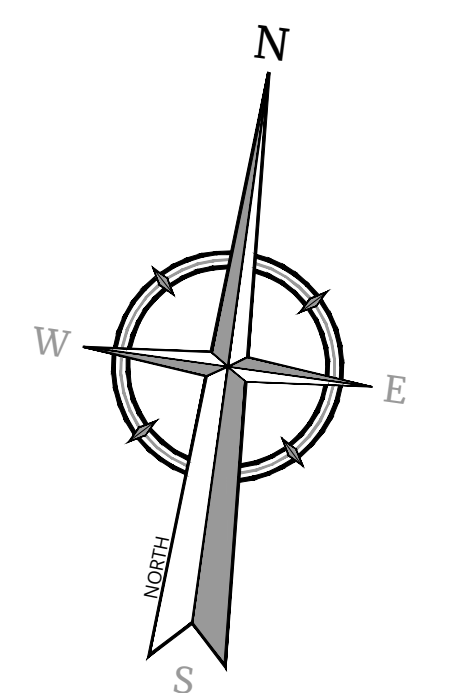
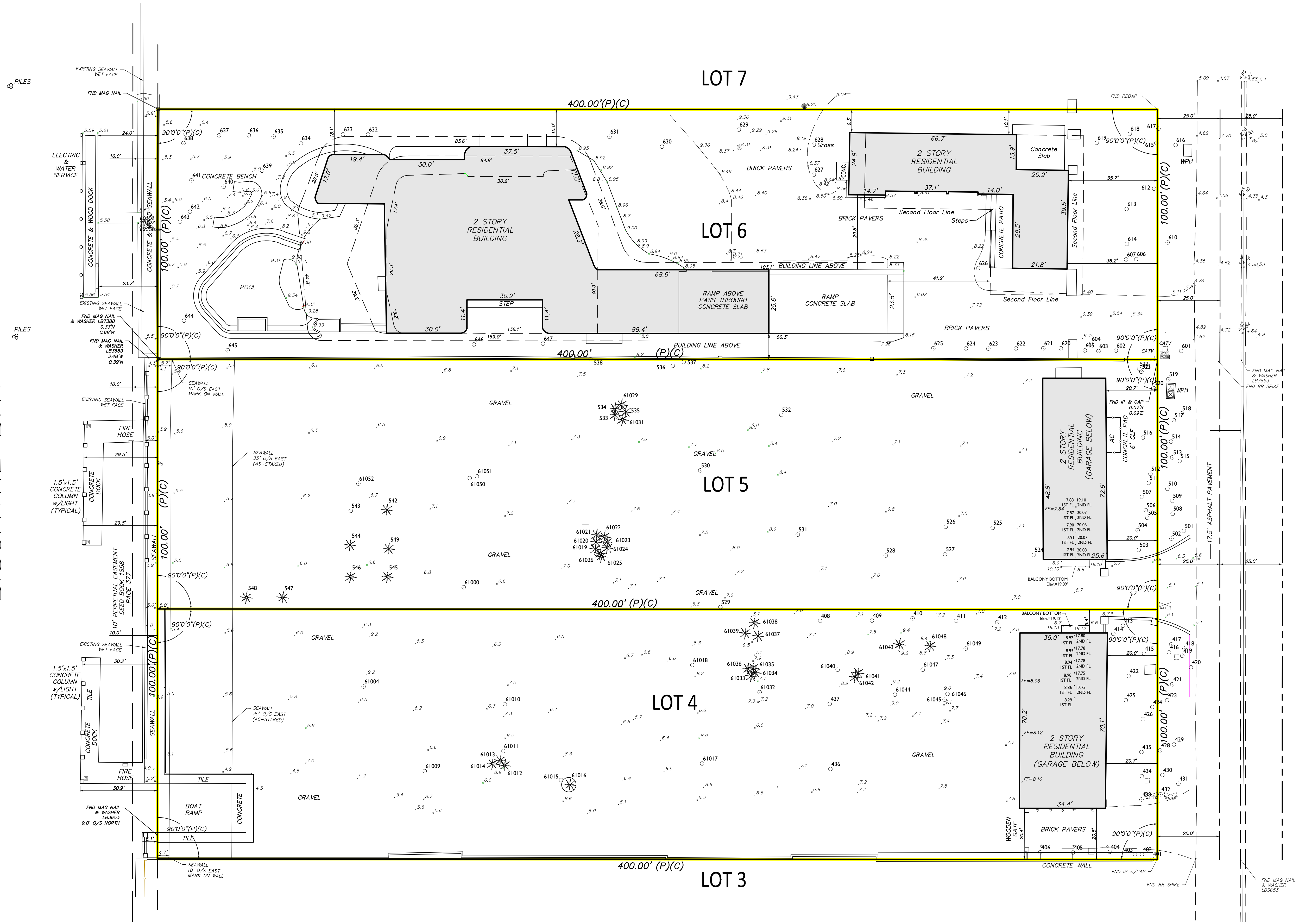
Tree #	Common Name	Botanical Name	DBH (inches)	Height (feet)	Diameter canopy (feet)
501	Red Larian Palm	Livistina chinensis	6	14	11
502	Chinese Fan Palm	Livistina chinensis	7	14	11
503	Canary Island Date Palm	Phoenix canariensis	24	24	24
504	Frontal Palm	Roystonea sp.	9	17	15
505	Frontal Palm	Roystonea sp.	9	17	15
506	Shrub Apple	Malus sp.	17	35	35
507	Frontal Palm	Roystonea sp.	9	17	15
508	Live Oak	Quercus virginiana	13	24	20
509	Chinese Fan Palm	Livistina chinensis	7	14	11
510	Montgomery Palm	Vectrisia americana	3	14	11
511	Chinese Fan Palm double	Livistina chinensis	6	14	11
512	Chinese Fan Palm double	Livistina chinensis	14	14	14
513	Montgomery Palm	Vectrisia americana	3	14	11
514	Red Larian Palm	Livistina chinensis	8	14	11
515	Canary Island Date Palm	Phoenix canariensis	12	24	14
516	Severed Date Palm	Phoenix canariensis	40	1	40
517	Chinese Fan Palm double	Livistina chinensis	12	24	14
518	Chinese Fan Palm double	Livistina chinensis	14	14	14
519	Chinese Fan Palm	Livistina chinensis	8	14	11
520	Canary Island Date Palm	Phoenix canariensis	23	24	24
521	Shrub Apple	Malus sp.	6	35	35
522	Sothiane Palm	Psychotria elegans	3	14	11
523	Sothiane Palm	Psychotria elegans	3	14	11
524	Canary Island Date Palm	Phoenix canariensis	22	24	25
525	Wreeping Fig	Ficus benjamina	25	17	30
526	Wreeping Fig	Ficus benjamina	27	17	30
527	Canary Island Date Palm	Phoenix canariensis	26	24	24
528	Canary Island Date Palm	Phoenix canariensis	22	24	24
529	Canary Island Date Palm	Phoenix canariensis	27	24	24
530	Banyan	Ficus religiosa	20	50	72
531	Cliff Date Palm	Phoenix cyclops	30	24	18
532	Shrub Apple	Malus sp.	9	35	35
533	Phoenix sp. clump	Phoenix sp.	80	24	20
534	Phoenix sp. clump	Phoenix sp.	22	24	27
535	Phoenix sp. clump	Phoenix sp.	20	24	27
536	Royal Palm	Royal Palm	20	24	18
537	Royal Palm	Royal Palm	18	24	18
538	Royal Palm	Royal Palm	18	24	18
539	Medjool	Phoenix dactyloides	14	14	18
540	Medjool	Phoenix dactyloides	20	14	18
541	Medjool	Phoenix dactyloides	18	14	18
542	Medjool	Phoenix dactyloides	18	14	18
543	Medjool	Phoenix dactyloides	18	14	18
544	Medjool	Phoenix dactyloides	18	14	18
545	Medjool	Phoenix dactyloides	18	14	18
546	Medjool	Phoenix dactyloides	18	14	18
547	Medjool	Phoenix dactyloides	18	14	18
548	Medjool	Phoenix dactyloides	14	14	18
549	Medjool	Phoenix dactyloides	14	14	18
550	Phoenix sp. clump	Phoenix sp.	80	24	20
551	Part of 62029	Phoenix sp.	-	-	-
552	Part of 62029	Phoenix sp.	-	-	-
553	Part of 62029	Phoenix sp.	-	-	-
554	Part of 62029	Phoenix sp.	-	-	-
555	Part of 62029	Phoenix sp.	-	-	-
556	Part of 62029	Phoenix sp.	-	-	-
557	Part of 62029	Phoenix sp.	-	-	-
558	Part of 62029	Phoenix sp.	-	-	-
559	Part of 62029	Phoenix sp.	-	-	-
560	Part of 62029	Phoenix sp.	-	-	-
561	Part of 62029	Phoenix sp.	-	-	-
562	Part of 62029	Phoenix sp.	-	-	-
563	Part of 62029	Phoenix sp.	-	-	-
564	Part of 62029	Phoenix sp.	-	-	-
565	Part of 62029	Phoenix sp.	-	-	-
566	Part of 62029	Phoenix sp.	-	-	-
567	Part of 62029	Phoenix sp.	-	-	-
568	Part of 62029	Phoenix sp.	-	-	-
569	Part of 62029	Phoenix sp.	-	-	-
570	Part of 62029	Phoenix sp.	-	-	-
571	Part of 62029	Phoenix sp.	-	-	-
572	Part of 62029	Phoenix sp.	-	-	-
573	Part of 62029	Phoenix sp.	-	-	-
574	Part of 62029	Phoenix sp.	-	-	-
575	Part of 62029	Phoenix sp.	-	-	-
576	Part of 62029	Phoenix sp.	-	-	-
577	Part of 62029	Phoenix sp.	-	-	-
578	Part of 62029	Phoenix sp.	-	-	-
579	Part of 62029	Phoenix sp.	-	-	-
580	Part of 62029	Phoenix sp.	-	-	-
581	Part of 62029	Phoenix sp.	-	-	-
582	Part of 62029	Phoenix sp.	-	-	-
583	Part of 62029	Phoenix sp.	-	-	-
584	Part of 62029	Phoenix sp.	-	-	-
585	Part of 62029	Phoenix sp.	-	-	-
586	Part of 62029	Phoenix sp.	-	-	-
587	Part of 62029	Phoenix sp.	-	-	-
588	Part of 62029	Phoenix sp.	-	-	-
589	Part of 62029	Phoenix sp.	-	-	-
590	Part of 62029	Phoenix sp.	-	-	-
591	Part of 62029	Phoenix sp.	-	-	-
592	Part of 62029	Phoenix sp.	-	-	-
593	Part of 62029	Phoenix sp.	-	-	-
594	Part of 62029	Phoenix sp.	-	-	-
595	Part of 62029	Phoenix sp.	-	-	-
596	Part of 62029	Phoenix sp.	-	-	-
597	Part of 62029	Phoenix sp.	-	-	-
598	Part of 62029	Phoenix sp.	-	-	-
599	Part of 62029	Phoenix sp.	-	-	-
600	Part of 62029	Phoenix sp.	-	-	-

**Lot 6**

Tree #	Common Name	Botanical Name	DBH (inches)	Height (feet)	Diameter canopy (feet)
601	Empson's Stopper	Myrciobryon fragrans	15	14	12
602	Black Calabash	Amphibea perfoliata	8	20	18
603	Black Calabash	Amphibea perfoliata	5	17	10
604	Sabal palm	Sabal palmetto	11	17	18
605	Sabal palm	Sabal palmetto	14	17	18
606	Dypsis spp	Dypsis spp	14	14	18
607	Royal Palm	Royal Palm	19	17	22
608	Wild Cinnamon	Cinnamomum	3	14	9
609	Wild Cinnamon	Cinnamomum	3	15	7
610	Pigeon Plum	Coccoloba diversifolia	40	35	35
611	Royal Palm	Royal Palm	20	17	20
612	Shrub Apple	Malus sp.	40	35	35
613	Dypsis spp	Dypsis spp	8	14	14
614	Royal Palm	Royal Palm	16	14	14
615	Sabal palm	Sabal palmetto	11	17	18
616	Empson's Stopper	Myrciobryon fragrans	16	11	12
617	Royal Palm	Royal Palm	19	17	20
618	Sabal palm	Sabal palmetto	11	17	18
619	Sabal palm	Sabal palmetto	11	17	18
620	Sabal palm Triple	Hexapetalon	12	20	20
621	Travelers Palm	Reverchod modyocarpoides	95	30	25
622	Travelers Palm	Reverchod modyocarpoides	110	30	25
623	Travelers Palm	Reverchod modyocarpoides	40	34	25
624	Travelers Palm	Reverchod modyocarpoides	140	35	35
625	Travelers Palm	Reverchod modyocarpoides	70	35	25
626	Travelers Palm	Reverchod modyocarpoides	40	34	25
627	Sabal palm	Sabal palmetto	11	17	18
628	Shrub Apple	Malus sp.	30	26	24
629	Sabal palm double	Sabal palmetto	9	17	18
630	Mahogany	Swietenia mahagoni	72	55	70
631	Travelers Palm	Reverchod modyocarpoides	12	27	22
632	Black Calabash	Amphibea perfoliata	8	16	12
633	Black Calabash	Amphibea perfoliata	11	16	12
634	Black Calabash	Amphibea perfoliata	18	28	24
635	Black Calabash	Amphibea perfoliata	7	16	12
636	Black Calabash	Amphibea perfoliata	11	20	18
637	Royal Palm	Royal Palm	19	17	20
638	Royal Palm	Royal Palm	19	17	20
639	Coconut Palm	Cocos nucifera	10	17	24
640	Coconut Palm	Cocos nucifera	11	17	24
641	Coconut Palm	Cocos nucifera	12	17	24
642	Coconut Palm	Cocos nucifera	8	17	24
643	Coconut Palm	Cocos nucifera	9	17	24
644	Gilbert Buttonwood	Conocarpus erectus var. acut	15	12	14
645	Adonidia Palm	Vectrisia americana	4	14	11
646	Caribbean	Capparis carolinensis	12	40	30
647	Arecia Palm	Chrysalidocarpus lutescens	25	22	14

**LEGAL DESCRIPTION:**

BISCAYNE BAY



Engineering & Design

www.colliersengineering.com

Copyright © 2024, Colliers Engineering & Design All Rights Reserved. This drawing and all the information contained herein is authorized for use only by the party for whom the services were rendered or to whom it is certified. This drawing may not be copied, revised, disclosed, distributed or relied upon for any other purpose without the express written consent of Colliers Engineering & Design.



**PROTECT YOURSELF**  
ALL STATES REQUIRE NOTIFICATION OF EXCAVATORS, DESIGNERS, OR ANY PERSON PREPARING TO DISTURB THE EARTH'S SURFACE ANYWHERE IN ANY STATE.  
Know what's below.  
Call before you dig.  
FOR STATE SPECIFIC DIRECT PHONE NUMBERS VISIT: WWW.CALL811.COM

REV	DATE	DRAWN BY	DESCRIPTION
1	02/21/22	JET	UPDATE SURVEY
2	08/04/22	PI	UPDATE SURVEY
3	03/24/23	LD	UPDATE TO INCLUDE REBUILT TREE LOCATIONS AND SEAWALL OFFSETS
4	04/02/24	DD	REVISE LOT AREA

**Denis A Denis**  
FLORIDA PROFESSIONAL SURVEYOR AND MAPPER  
LICENSE NUMBER: LS7017  
COLLIERS ENGINEERING & DESIGN, INC.  
F.L. License #: LB7388

**BOUNDARY SURVEY**  
FOR  
**Handcraft**

Lot 4  
Lot 5  
Lot 6  
Star Island

Miami Beach  
Miami - Dade County  
Florida

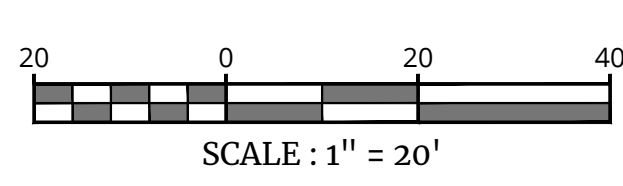
**Colliers** Engineering & Design  
MIAMI  
7400 Corporate Center Drive  
Suite C  
Miami, FL 33126  
Phone: 305.392.3190  
COLLIERS ENGINEERING & DESIGN, INC.

SCALE: AS SHOWN	DATE: 03/08/2021	DRAWN BY: JET	CHECKED BY: DD
PROJECT NUMBER: 23014979A	SHEET NUMBER: 02 of 02		

**BOUNDARY SURVEY**

SHEET NUMBER:  
**02 of 02**

SEE SHEET 1 OF 2 FOR SURVEYOR'S NOTES AND LEGEND



NOTE: DO NOT SCALE DRAWINGS FOR CONSTRUCTION.