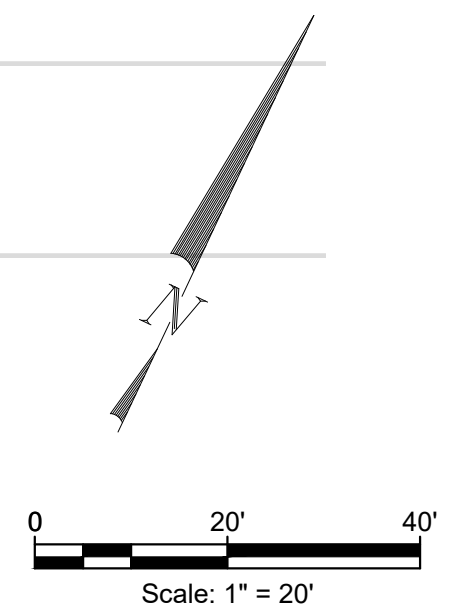
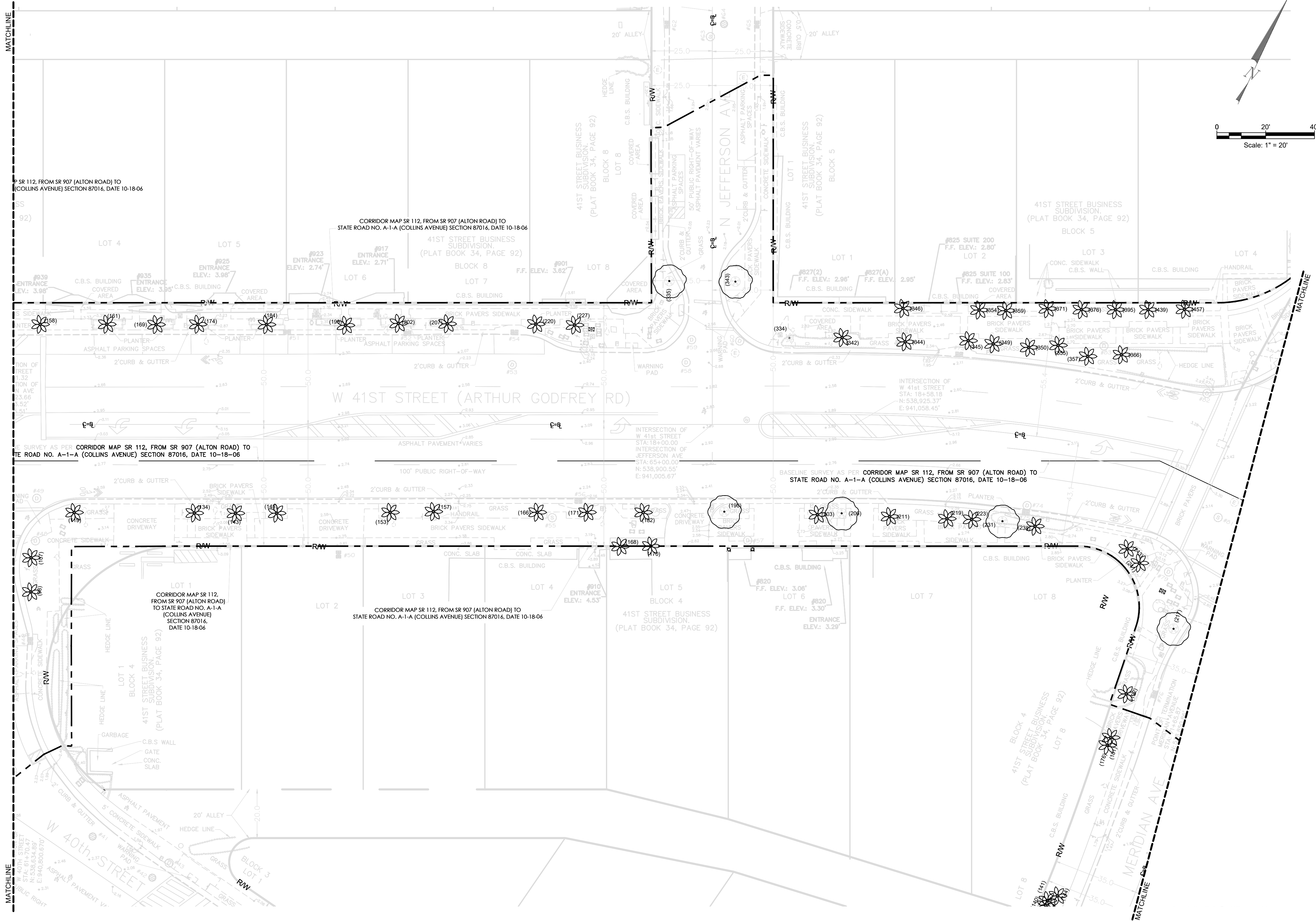


- NOTES:**
- 1.0 HARDSCAPE  
HARDSCAPE FOR REFERENCE ONLY. SEE L1-30 SERIES FOR FULL FURNITURE PLANS.
  - 2.0 SITE FURNITURE  
SEE L1-60 SERIES FOR FULL FURNITURE PLANS.
  - 3.0 RAILING, BARRIERS, AND FENCING
  - 4.0 MISCELLANEOUS SITE FEATURES  
SEE L1-60 SERIES FOR FULL FURNITURE PLANS AND L2-10 SERIES FOR PUBLIC ART PLANS.
  - 5.0 PLANTING  
SEE L1-50 SERIES FOR FULL PLANTING PLANS.
  - 6.0 TREE PLANTING  
SEE L6-10 SERIES FOR SPECIES TYPE, DBH AND HEIGHT.  
RM REMOVE
- REFERENCE NOTES**
- ALL TREES NOT TAGGED WITH "RM" ARE TO REMAIN.



**ARCH. SEAL:**

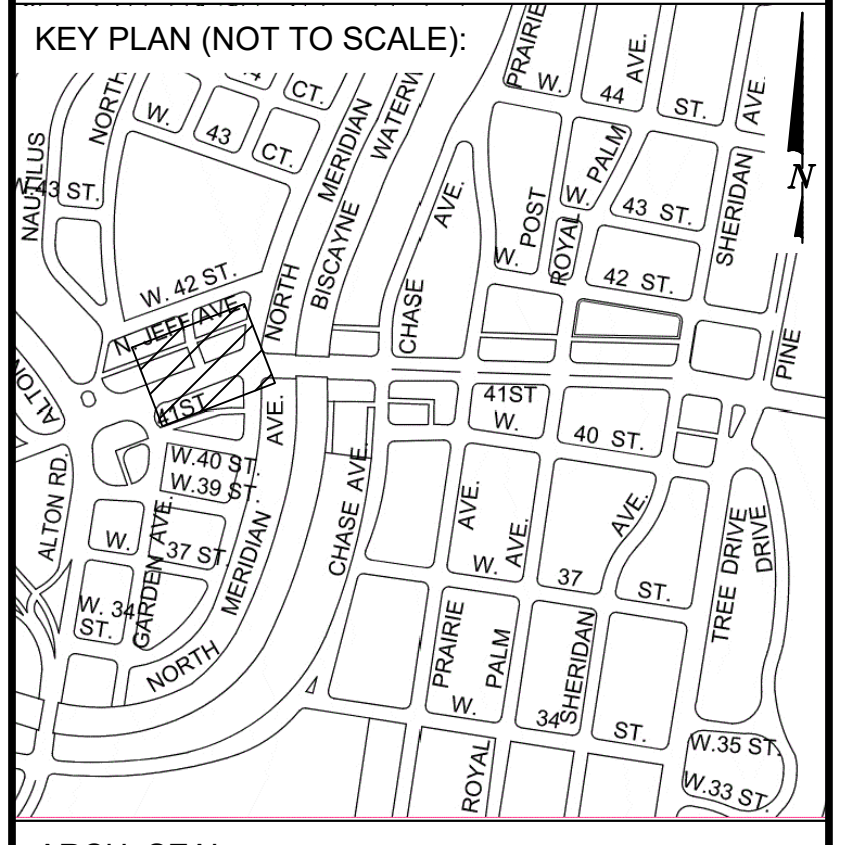
<p><b>OFFICE OF CAPITAL IMPROVEMENT PROJECTS</b> 1701 MERIDIAN AVENUE, MIAMI BEACH, FL 33139</p>	<p>CITY MANAGER: ALINA T. HUDAK DIRECTOR: DAVID MARTINEZ, P.E. PUBLIC WORK DIRECTOR: JOE GOMEZ, P.E. CITY ENGINEER: CRISTINA ORTEGA CASTINEIRAS, P.E.</p>	<p>5</p>				<p>BROOKS + SCARPA 1147 NE 7th Ave Fort Lauderdale, FL 33304</p>	<p>ARCHITECT OF RECORD: Jeffrey Huber #AR6514 #LA6667547</p>	<p>ARCHITECT OF RECORD: DESIGN ARCHITECT: JH DRAWN BY: IP CHECKER: JH SCALE: 1"=20'</p>	<p>NEIGHBORHOOD: <b>41ST ST CORRIDOR REVITALIZATION</b></p>	<p>TITLE: <b>L1-10 TREE DISPOSITION PLAN</b></p>	<p>File Name: 41STCORR - L1-1 - TREE DISPOSITION PLANS.dwg</p>	<p>Drawing: <b>L1-10</b></p>
		<p>2023-11-15 PRELIMINARY 60% DESIGN 2023-04-17 30% DESIGN MILESTONE</p>	<p>NO. DATE REVISION APP'D. BY</p>									



- NOTES:**
- 1.0 HARDSCAPE
    - HARDSCAPE FOR REFERENCE ONLY. SEE L1-30 SERIES FOR FULL FURNITURE PLANS.
  - 2.0 SITE FURNITURE
    - SEE L1-60 SERIES FOR FULL FURNITURE PLANS.
  - 3.0 RAILING, BARRIERS, AND FENCING
  - 4.0 MISCELLANEOUS SITE FEATURES
    - SEE L1-60 SERIES FOR FULL FURNITURE PLANS AND L2-10 SERIES FOR PUBLIC ART PLANS.
  - 5.0 PLANTING
    - SEE L1-50 SERIES FOR FULL PLANTING PLANS.
  - 6.0 TREE PLANTING
    - SEE L6-10 SERIES FOR SPECIES TYPE, DBH AND HEIGHT.
- RM REMOVE

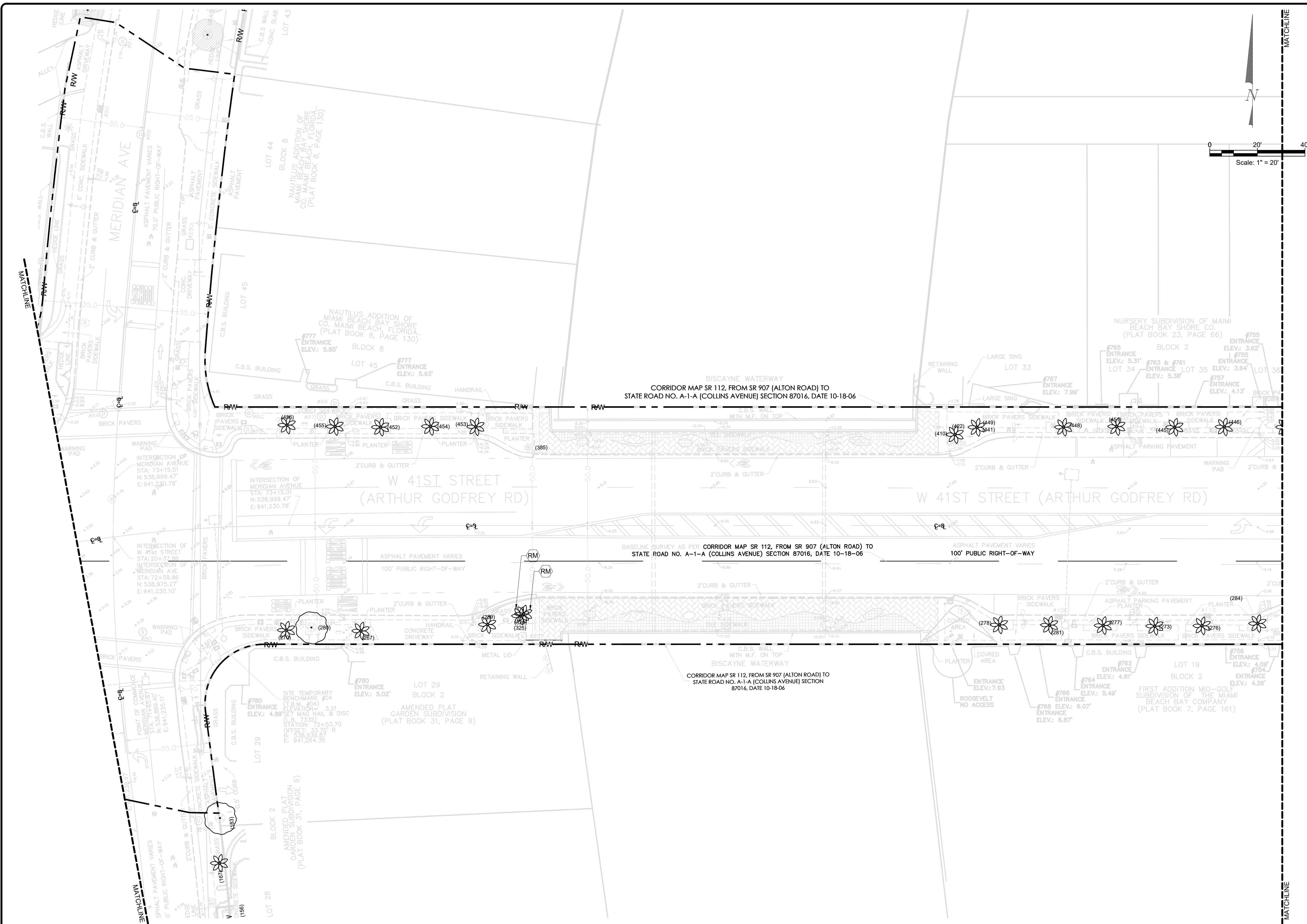
**REFERENCE NOTES**

ALL TREES NOT TAGGED WITH "RM" ARE TO REMAIN.



**ARCH. SEAL:**

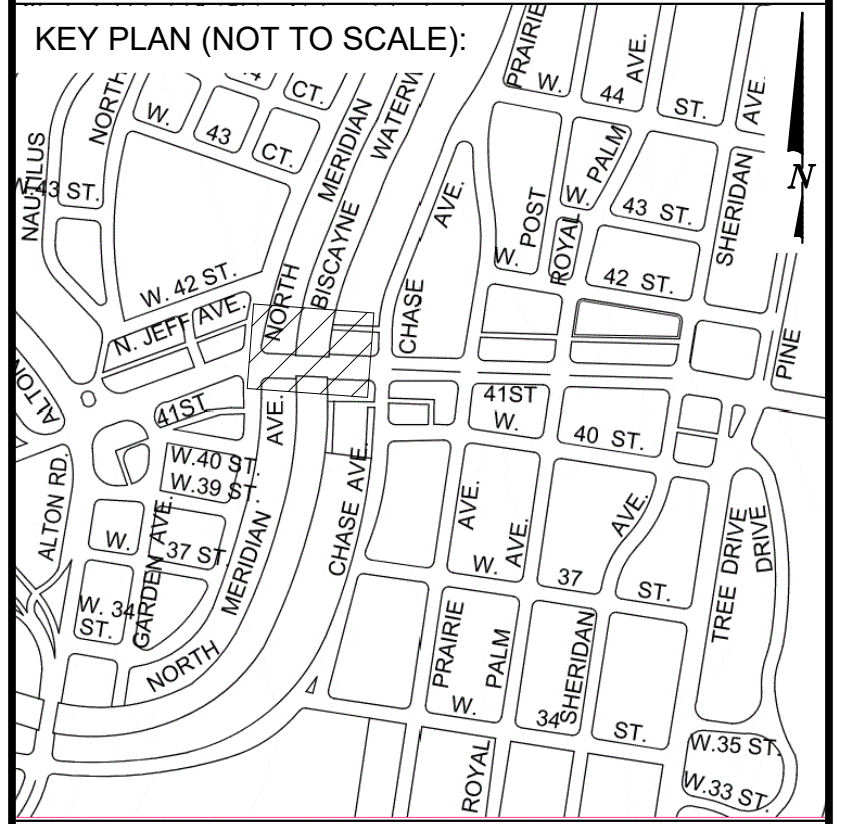
<p><b>OFFICE OF CAPITAL IMPROVEMENT PROJECTS</b> 1701 MERIDIAN AVENUE, MIAMI BEACH, FL 33139</p>	CITY MANAGER: ALINA T. HUDAK DIRECTOR: DAVID MARTINEZ, P.E. PUBLIC WORK DIRECTOR: JOE GOMEZ, P.E. CITY ENGINEER: CRISTINA ORTEGA CASTINEIRAS, P.E.	5 4 3 2 1	NO. DATE REVISION	APP'D. BY	 BROOKS + SCARPA 1147 NE 7th Ave Fort Lauderdale, FL 33304	ARCHITECT OF RECORD: ARCHITECT OF RECORD: DESIGN ARCHITECT: JEH DRAWN BY: IP CHECKER: JEH SCALE: 1"=20'	NEIGHBORHOOD: 41ST ST CORRIDOR REVITALIZATION	TITLE: L1-11 TREE DISPOSITION PLAN	File Name: 41STCORR - L1-1 - TREE DISPOSITION PLANS.dwg	Drawing: L1-11
		PRELIMINARY 60% DESIGN 2023-11-15 30% DESIGN MILESTONE 2023-04-17								



- NOTES:**
- 1.0 HARDSCAPE  
HARDSCAPE FOR REFERENCE ONLY. SEE L1-30 SERIES FOR FULL FURNITURE PLANS.
  - 2.0 SITE FURNITURE  
SEE L1-60 SERIES FOR FULL FURNITURE PLANS.
  - 3.0 RAILING, BARRIERS, AND FENCING
  - 4.0 MISCELLANEOUS SITE FEATURES  
SEE L1-60 SERIES FOR FULL FURNITURE PLANS AND L2-10 SERIES FOR PUBLIC ART PLANS.
  - 5.0 PLANTING  
SEE L1-50 SERIES FOR FULL PLANTING PLANS.
  - 6.0 TREE PLANTING  
SEE L6-10 SERIES FOR SPECIES TYPE, DBH AND HEIGHT.
- RM REMOVE

**REFERENCE NOTES**

ALL TREES NOT TAGGED WITH "RM" ARE TO REMAIN.



**ARCH. SEAL:**

**MIAMI BEACH**  
OFFICE OF CAPITAL IMPROVEMENT PROJECTS  
1701 MERIDIAN AVENUE, MIAMI BEACH, FL 33139

CITY MANAGER:	ALINA T. HUDAK
DIRECTOR:	DAVID MARTINEZ, P.E.
PUBLIC WORK DIRECTOR:	JOE GOMEZ, P.E.
CITY ENGINEER:	CRISTINA ORTEGA CASTINEIRAS, P.E.

5			
4			
3			
2	2023-11-15	PRELIMINARY 60% DESIGN MILESTONE	
1	2023-04-17	30% DESIGN MILESTONE	
NO.	DATE	REVISION	APP'D. BY

**BROOKS + SCARPA**  
BROOKS + SCARPA  
1147 NE 7th Ave  
Fort Lauderdale, FL 33304

ARCHITECT OF RECORD:  
JEFFREY HUBER  
#AR6514  
#LA667547

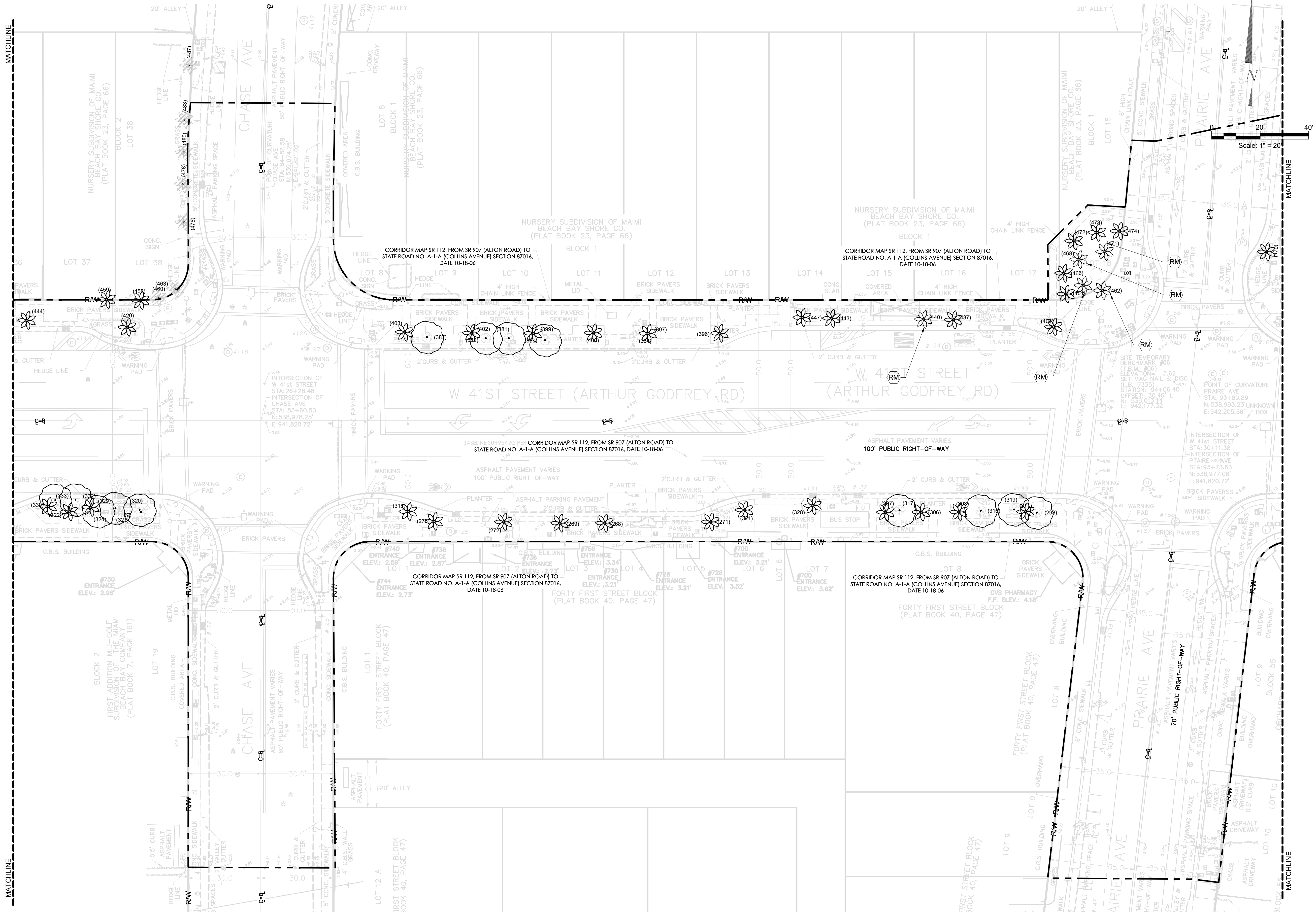
ARCHITECT OF RECORD:  
DESIGN ARCHITECT/JH  
DRAWN BY: IP  
CHECKER: JH  
SCALE: 1"=20'

NEIGHBORHOOD: **41ST ST CORRIDOR REVITALIZATION**

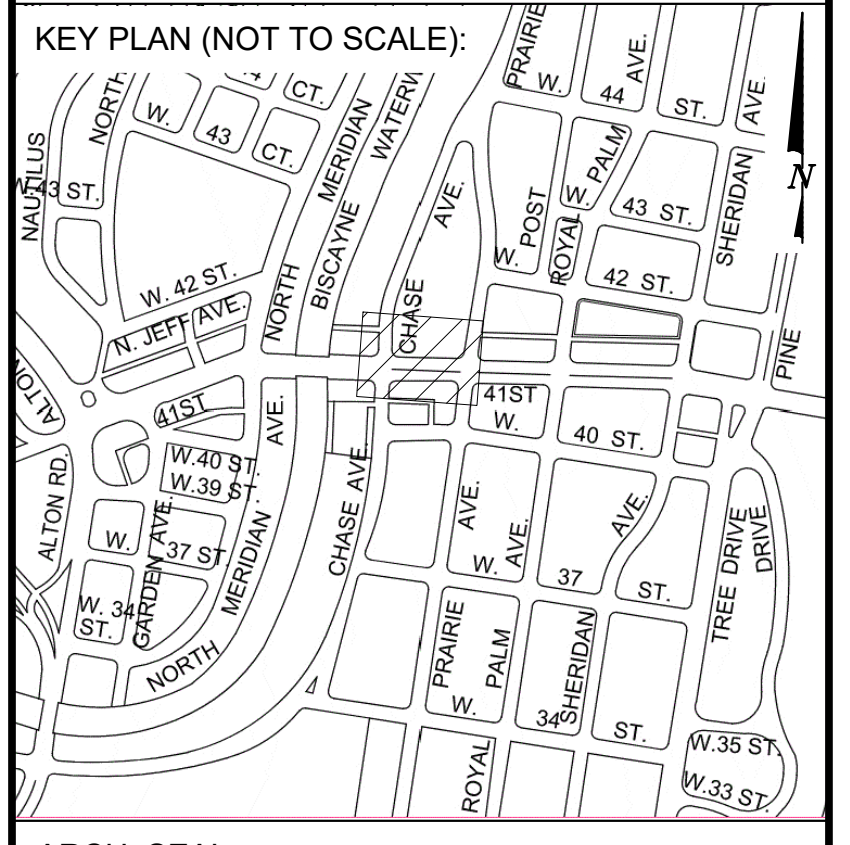
TITLE: **L1-12 TREE DISPOSITION PLAN**

File Name: 41STCORR - L1-1 - TREE DISPOSITION PLANS.dwg

Drawing: **L1-12**



- NOTES:**
- 1.0 HARDSCAPE  
HARDSCAPE FOR REFERENCE ONLY. SEE L1-30 SERIES FOR FULL FURNITURE PLANS.
  - 2.0 SITE FURNITURE  
SEE L1-60 SERIES FOR FULL FURNITURE PLANS.
  - 3.0 RAILING, BARRIERS, AND FENCING
  - 4.0 MISCELLANEOUS SITE FEATURES  
SEE L1-60 SERIES FOR FULL FURNITURE PLANS AND L2-10 SERIES FOR PUBLIC ART PLANS.
  - 5.0 PLANTING  
SEE L1-50 SERIES FOR FULL PLANTING PLANS.
  - 6.0 TREE PLANTING  
SEE L6-10 SERIES FOR SPECIES TYPE, DBH AND HEIGHT.
- RM REMOVE
- REFERENCE NOTES**
- ALL TREES NOT TAGGED WITH "RM" ARE TO REMAIN.



**ARCH. SEAL:**

**MIAMI BEACH**  
OFFICE OF CAPITAL IMPROVEMENT PROJECTS  
1701 MERIDIAN AVENUE, MIAMI BEACH, FL 33139

CITY MANAGER: ALINA T. HUDAK	5		
DIRECTOR: DAVID MARTINEZ, P.E.	4		
PUBLIC WORK DIRECTOR: JOE GOMEZ, P.E.	3		
CITY ENGINEER: CRISTINA ORTEGA CASTINEIRAS, P.E.	2	2023-11-15	PRELIMINARY 60% DESIGN
	1	2023-04-17	30% DESIGN MILESTONE
NO.	DATE	REVISION	APP'D. BY

**BROOKS + SCARPA**  
BROOKS + SCARPA  
1147 NE 7th Ave  
Fort Lauderdale, FL 33304

ARCHITECT OF RECORD:  
JEFFREY HUBER  
#AR6514  
#LA667547

ARCHITECT OF RECORD:  
DESIGN ARCHITECT/JH  
DRAWN BY: IP  
CHECKER: JH  
SCALE: 1"=20'

NEIGHBORHOOD: **41ST ST CORRIDOR REVITALIZATION**

TITLE: **L1-13 TREE DISPOSITION PLAN**

File Name: 41STCORR - L1-1 - TREE DISPOSITION PLANS.dwg

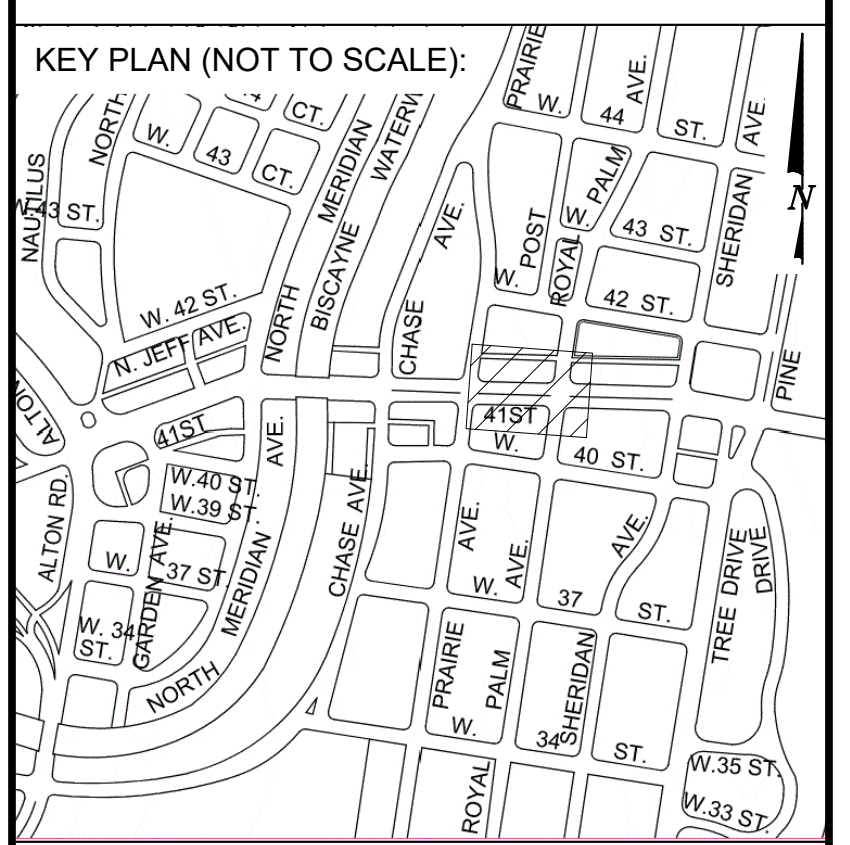
Drawing: **L1-13**



- NOTES:**
- 1.0 HARDSCAPE  
HARDSCAPE FOR REFERENCE ONLY. SEE L1-30 SERIES FOR FULL FURNITURE PLANS.
  - 2.0 SITE FURNITURE  
SEE L1-60 SERIES FOR FULL FURNITURE PLANS.
  - 3.0 RAILING, BARRIERS, AND FENCING
  - 4.0 MISCELLANEOUS SITE FEATURES  
SEE L1-60 SERIES FOR FULL FURNITURE PLANS AND L2-10 SERIES FOR PUBLIC ART PLANS.
  - 5.0 PLANTING  
SEE L1-50 SERIES FOR FULL PLANTING PLANS.
  - 6.0 TREE PLANTING  
SEE L6-10 SERIES FOR SPECIES TYPE, DBH AND HEIGHT.
- RM REMOVE

**REFERENCE NOTES**

ALL TREES NOT TAGGED WITH "RM" ARE TO REMAIN.



**ARCH. SEAL:**

**MIAMI BEACH**  
OFFICE OF CAPITAL IMPROVEMENT PROJECTS  
1701 MERIDIAN AVENUE, MIAMI BEACH, FL 33139

CITY MANAGER: ALINA T. HUDAK  
DIRECTOR: DAVID MARTINEZ, P.E.  
PUBLIC WORK DIRECTOR: JOE GOMEZ, P.E.  
CITY ENGINEER: CRISTINA ORTEGA CASTINEIRAS, P.E.

5			
4			
3			
2	2023-11-15	PRELIMINARY 60% DESIGN	
1	2023-04-17	30% DESIGN MILESTONE	
NO.	DATE	REVISION	APP'D. BY

**BROOKS + SCARPA**  
BROOKS + SCARPA  
1147 NE 7th Ave  
Fort Lauderdale, FL 33304

ARCHITECT OF RECORD:  
Jeffrey Huber  
#AR06514  
#LA667547

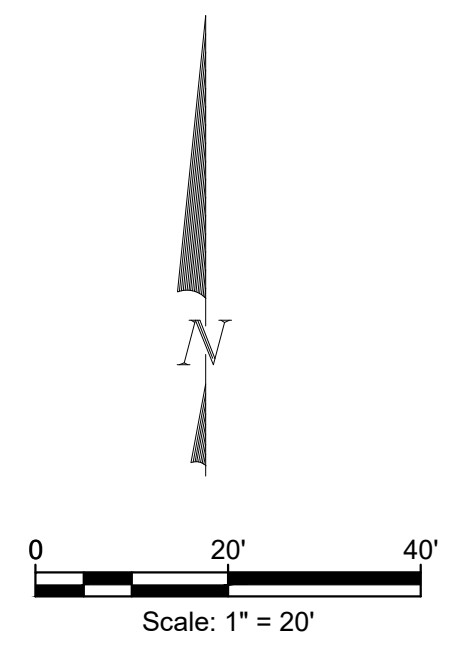
ARCHITECT OF RECORD:  
DESIGN ARCHITECT: JH  
DRAWN BY: IP  
CHECKER: JH  
SCALE: 1"=20'

NEIGHBORHOOD: 41ST ST CORRIDOR REVITALIZATION  
TITLE: L1-14 TREE DISPOSITION PLAN

File Name: 41STCORR - L1-1 - TREE DISPOSITION PLANS.dwg

Drawing: L1-14





- NOTES:**
- 1.0 HARDSCAPE  
HARDSCAPE FOR REFERENCE ONLY. SEE L1-30 SERIES FOR FULL FURNITURE PLANS.
  - 2.0 SITE FURNITURE  
SEE L1-60 SERIES FOR FULL FURNITURE PLANS.
  - 3.0 RAILING, BARRIERS, AND FENCING
  - 4.0 MISCELLANEOUS SITE FEATURES  
SEE L1-60 SERIES FOR FULL FURNITURE PLANS AND L2-10 SERIES FOR PUBLIC ART PLANS.
  - 5.0 PLANTING  
SEE L1-50 SERIES FOR FULL PLANTING PLANS.
  - 6.0 TREE PLANTING  
SEE L6-10 SERIES FOR SPECIES TYPE, DBH AND HEIGHT.
- RM REMOVE
- REFERENCE NOTES**
- ALL TREES NOT TAGGED WITH "RM" ARE TO REMAIN.



**ARCH. SEAL:**

**MIAMI BEACH**  
OFFICE OF CAPITAL IMPROVEMENT PROJECTS  
1701 MERIDIAN AVENUE, MIAMI BEACH, FL 33139

CITY MANAGER: ALINA T. HUDAK  
DIRECTOR: DAVID MARTINEZ, P.E.  
PUBLIC WORK DIRECTOR: JOE GOMEZ, P.E.  
CITY ENGINEER: CRISTINA ORTEGA CASTINEIRAS, P.E.

NO.	DATE	REVISION	APP'D. BY
5			
4			
3			
2	2023-11-15	PRELIMINARY 60% DESIGN	
1	2023-04-17	30% DESIGN MILESTONE	

**BROOKS + SCARPA**  
BROOKS + SCARPA  
1147 NE 7th Ave  
Fort Lauderdale, FL 33304

ARCHITECT OF RECORD:  
Jeffrey Huber  
#AR65514  
#LA6667547

ARCHITECT OF RECORD:  
DESIGN ARCHITECT: JH  
DRAWN BY: IP  
CHECKER: JH  
SCALE: 1"=20'

NEIGHBORHOOD: **41ST ST CORRIDOR REVITALIZATION**  
TITLE: **L1-16 TREE DISPOSITION PLAN**

File Name: 41STCORR - L1-1 - TREE DISPOSITION PLANS.dwg

Drawing: **L1-16**