

NOTES:

LEGEND

- = PROPOSED GRAY BANDED CONCRETE
- = PROPOSED MIAMI BEACH RED PIGMENTED/PATTERNED CONCRETE
- = PROPOSED MIAMI BEACH RED PIGMENTED/PATTERNED CONCRETE
- = PROPOSED MILLED AND RESURFACED PAVEMENT
- = PATTERNED DRIVEABLE CONCRETE/ CONCRETE DRIVEWAYS
- = LIMITS OF WORK
- = RIGHT OF WAY

NOTES: ALL ROADWAY MARKINGS/ STRIPING TO MATCH EXISTING U.O.N. SEE LANDSCAPE PLAN FOR ADDITIONAL PAVEMENT MARKINGS

KEY PLAN (NOT TO SCALE):

P.E. SEAL:

MIAMI BEACH

OFFICE OF CAPITAL IMPROVEMENT PROJECTS

1701 MERIDIAN AVENUE, MIAMI BEACH, FL 33139

CITY MANAGER: ALINA T. HUDAK
 DIRECTOR: DAVID MARTINEZ, P.E.
 CITY ENGINEER: CRISTINA ORTEGA CASTINEIRAS, P.E.

NO.	DATE	REVISION	APPD. BY
5			
4			
3			
2			
1			

Stantec

ENGINEER OF RECORD: _____

DESIGN ENGINEER: JSC

DRAWN BY: SMG

CHECKER: SMB

SCALE: 1:20

NEIGHBORHOOD: 41ST ST CORRIDOR REVITALIZATION PROJECT

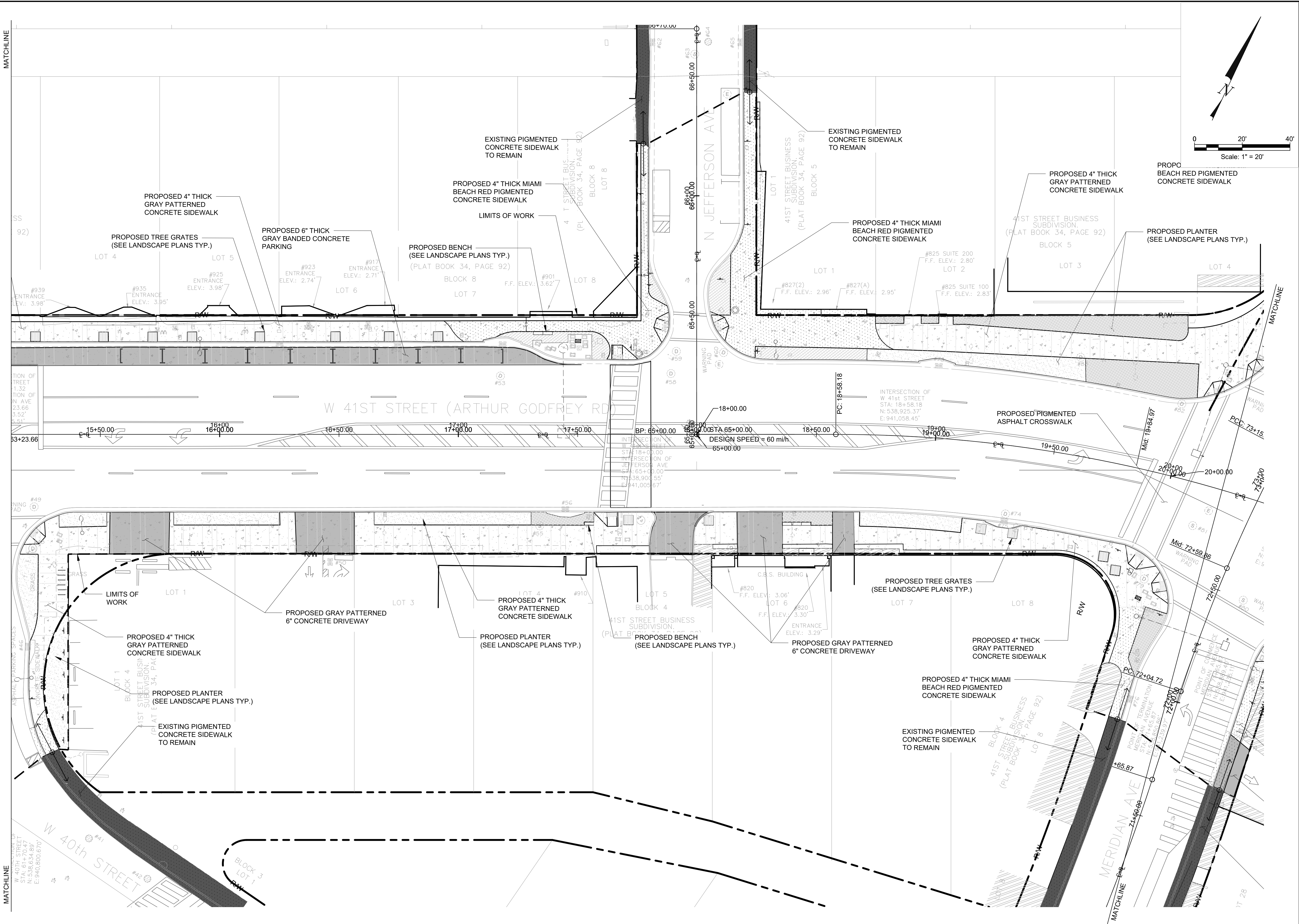
TITLE: **SITE PLAN**

File Name: 2023-C1-031.dwg

Survey Reference: _____

Field Book: N/A Page: N/A Work Order: N/A

Date: 4/17/2023 Sheet: 37 of 124 Drawing: C1-031



NOTES:

LEGEND

- = PROPOSED GRAY BANDED CONCRETE
- = PROPOSED MIAMI BEACH RED PIGMENTED/PATTERNED CONCRETE
- = PROPOSED MIAMI BEACH RED PIGMENTED/PATTERNED CONCRETE
- = PROPOSED MILLED AND RESURFACED PAVEMENT
- = PATTERNED DRIVABLE CONCRETE/ CONCRETE DRIVEWAYS
- = LIMITS OF WORK
- = RIGHT OF WAY

NOTES: ALL ROADWAY MARKINGS/ STRIPING TO MATCH EXISTING U.O.N. SEE LANDSCAPE PLAN FOR ADDITIONAL PAVEMENT MARKINGS

KEY PLAN (NOT TO SCALE):

P.E. SEAL:

MIAMI BEACH

OFFICE OF CAPITAL IMPROVEMENT PROJECTS

1701 MERIDIAN AVENUE, MIAMI BEACH, FL 33139

CITY MANAGER: ALINA T. HUDAK
 DIRECTOR: DAVID MARTINEZ, P.E.
 CITY ENGINEER: CRISTINA ORTEGA CASTINEIRAS, P.E.

NO.	DATE	REVISION	APPD. BY
5			
4			
3			
2			
1			

Stantec

ENGINEER OF RECORD: _____

DESIGN ENGINEER: JSC

DRAWN BY: SMG

CHECKER: SMB

SCALE: 1:20

ENGINEER OF RECORD: _____

DESIGN ENGINEER: JSC

DRAWN BY: SMG

CHECKER: SMB

SCALE: 1:20

NEIGHBORHOOD: 41ST ST CORRIDOR REVITALIZATION PROJECT

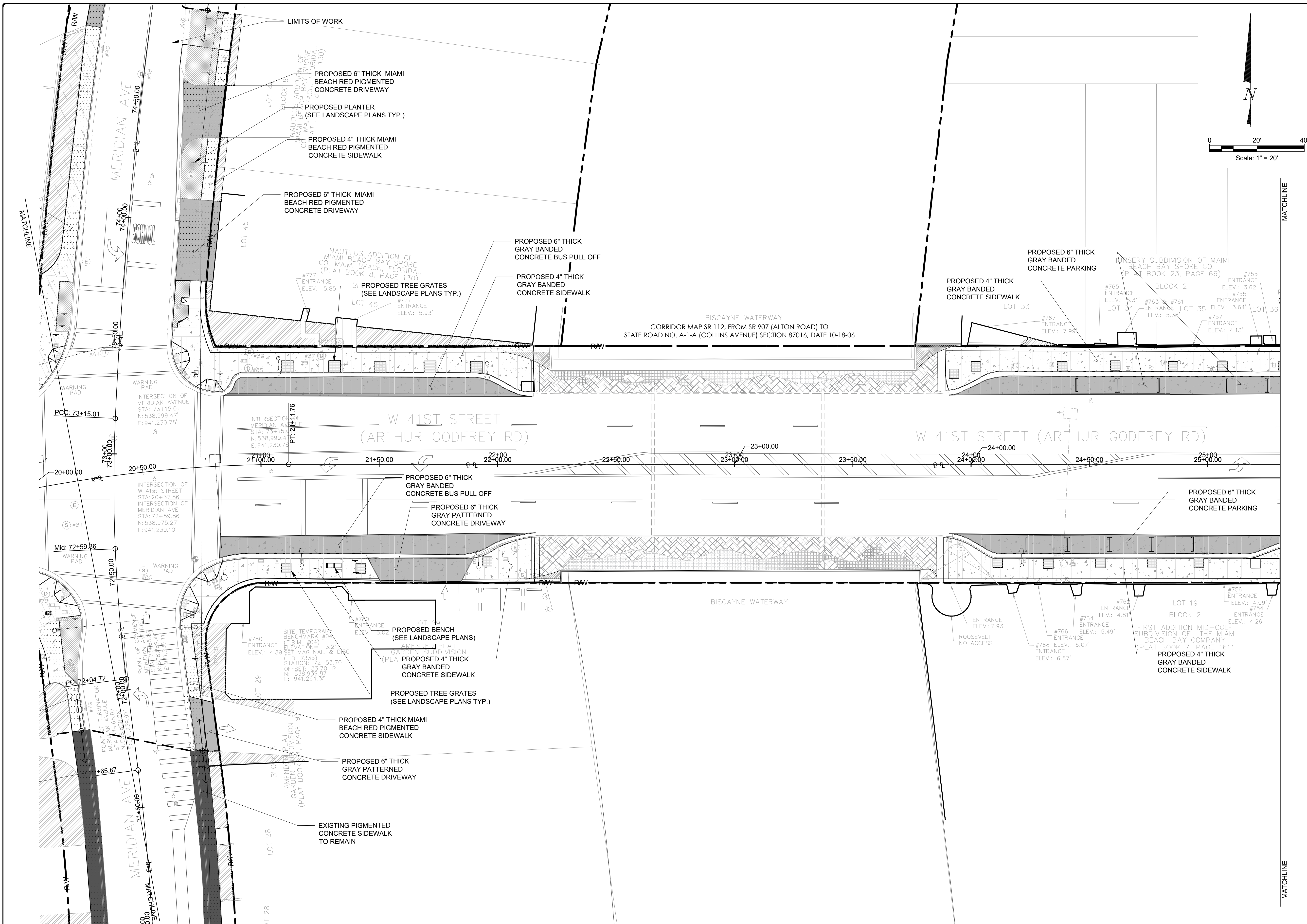
TITLE: **SITE PLAN**

File Name: 2023-C1-031.dwg

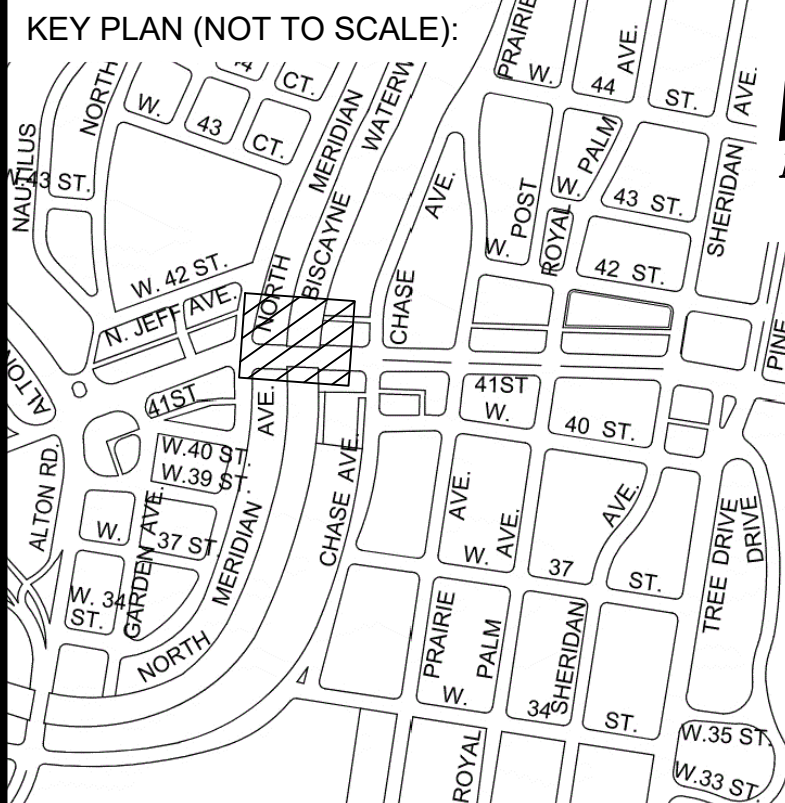
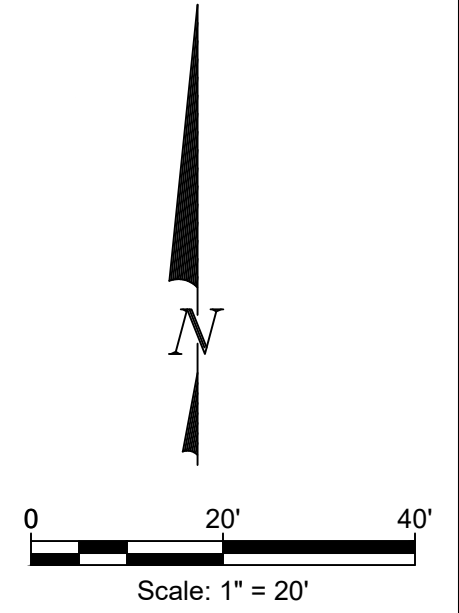
Survey Reference: _____

Field Book: N/A Page: N/A Work Order: N/A

Date: 4/17/2023 Sheet: 38 of 124 Drawing: C1-032



- NOTES:**
- LEGEND**
- = PROPOSED GRAY BANDED CONCRETE
 - = PROPOSED MIAMI BEACH RED PIGMENTED/PATTERNED CONCRETE
 - = PROPOSED MIAMI BEACH RED PIGMENTED/PATTERNED CONCRETE
 - = PROPOSED MILLED AND RESURFACED PAVEMENT
 - = PATTERNED DRIVEABLE CONCRETE/ CONCRETE DRIVEWAYS
 - = LIMITS OF WORK
 - = RIGHT OF WAY
- NOTES:** ALL ROADWAY MARKINGS/ STRIPING TO MATCH EXISTING U.O.N. SEE LANDSCAPE PLAN FOR ADDITIONAL PAVEMENT MARKINGS



P.E. SEAL:

MIAMI BEACH
OFFICE OF CAPITAL IMPROVEMENT PROJECTS
 1701 MERIDIAN AVENUE, MIAMI BEACH, FL 33139

CITY MANAGER: ALINA T. HUDAK
 DIRECTOR: DAVID MARTINEZ, P.E.
 CITY ENGINEER: CRISTINA ORTEGA CASTINEIRAS, P.E.

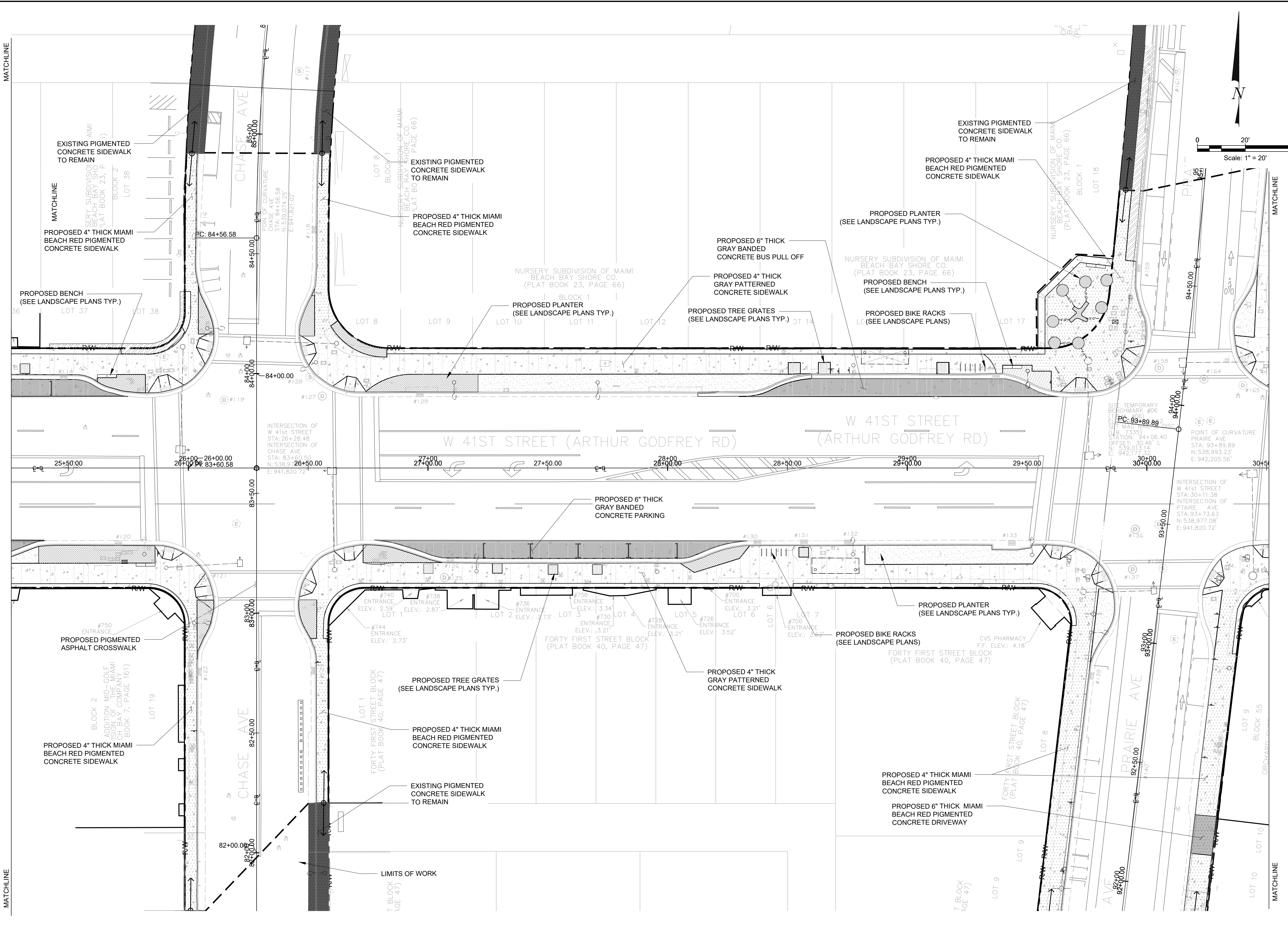
NO.	DATE	REVISION	APPD. BY
5			
4			
3			
2			
1			

Stantec
 1000 BAYVIEW DRIVE
 MIAMI BEACH, FL 33134
 WWW.STANTEC.COM

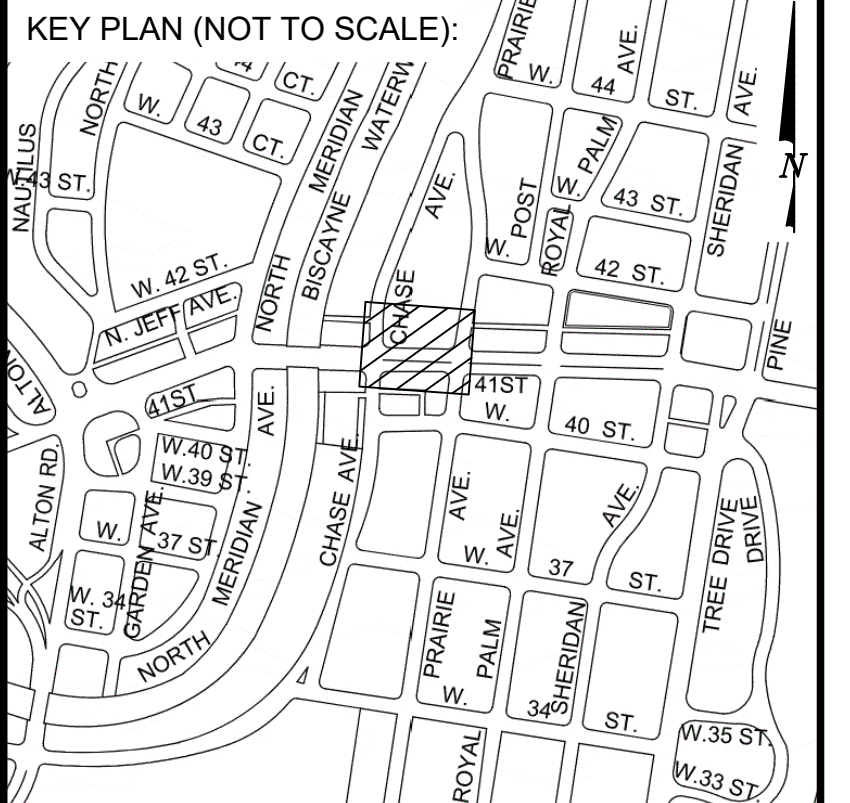
ENGINEER OF RECORD:	ENGINEER OF RECORD: _____
DESIGN ENGINEER: JSC	DRAWN BY: SMG
CHECKER: SMB	SCALE: 1:20

NEIGHBORHOOD:	41ST ST CORRIDOR REVITALIZATION PROJECT
TITLE:	SITE PLAN

File Name:	2023-C1-031.dwg
Survey Reference:	
Field Book:	N/A
Page:	N/A
Work Order:	N/A
Date:	4/17/2023
Sheet:	39 of 124
Drawing:	C1-033



- NOTES:**
- LEGEND**
- = PROPOSED GRAY BANDED CONCRETE
 - = PROPOSED MIAMI BEACH RED PIGMENTED/PATTERNED CONCRETE
 - = PROPOSED MIAMI BEACH RED PIGMENTED/PATTERNED CONCRETE
 - = PROPOSED MILLED AND RESURFACED PAVEMENT
 - = PATTERNED DRIVEABLE CONCRETE/ CONCRETE DRIVEWAYS
 - = LIMITS OF WORK
 - = RIGHT OF WAY
- NOTES:** ALL ROADWAY MARKINGS/ STRIPING TO MATCH EXISTING U.O.N. SEE LANDSCAPE PLAN FOR ADDITIONAL PAVEMENT MARKINGS



P.E. SEAL:

MIAMI BEACH
OFFICE OF CAPITAL IMPROVEMENT PROJECTS
 1701 MERIDIAN AVENUE, MIAMI BEACH, FL 33139

CITY MANAGER: ALINA T. HUDAK
 DIRECTOR: DAVID MARTINEZ, P.E.
 CITY ENGINEER: CRISTINA ORTEGA CASTINEIRAS, P.E.

NO.	DATE	REVISION	APPD. BY
5			
4			
3			
2			
1			

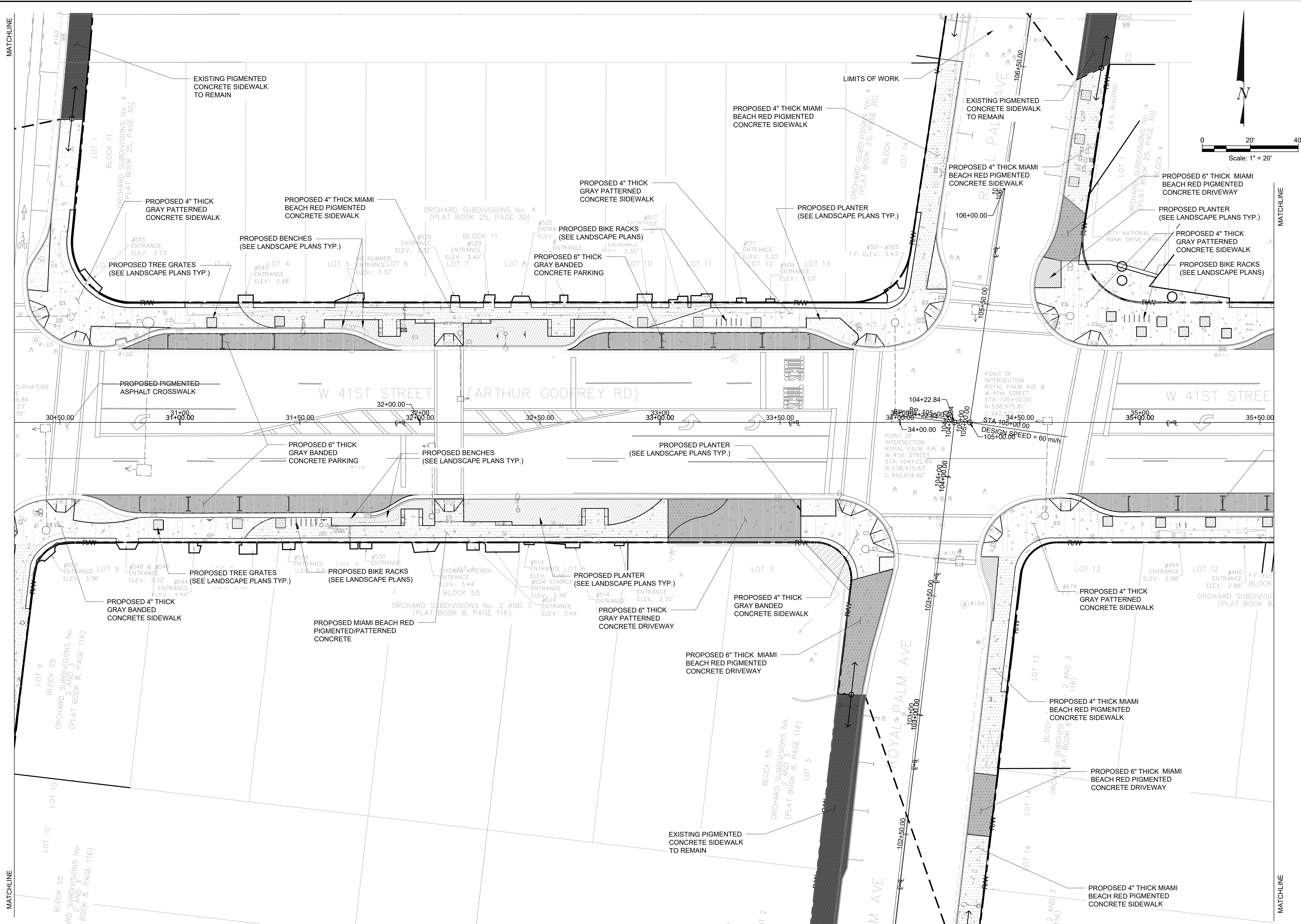


ENGINEER OF RECORD: _____
 DESIGN ENGINEER: JSC
 DRAWN BY: SMG
 CHECKER: SMB
 SCALE: 1:20

NEIGHBORHOOD: 41ST ST CORRIDOR REVITALIZATION PROJECT
 TITLE: **SITE PLAN**

File Name: 2023-C1-031.dwg
 Survey Reference:
 Field Book: N/A Page: N/A Work Order: N/A
 Date: 4/17/2023 Sheet: 40 of 124 Drawing: C1-034

THIS SPACE RESERVED FOR PROJECT MILESTONE

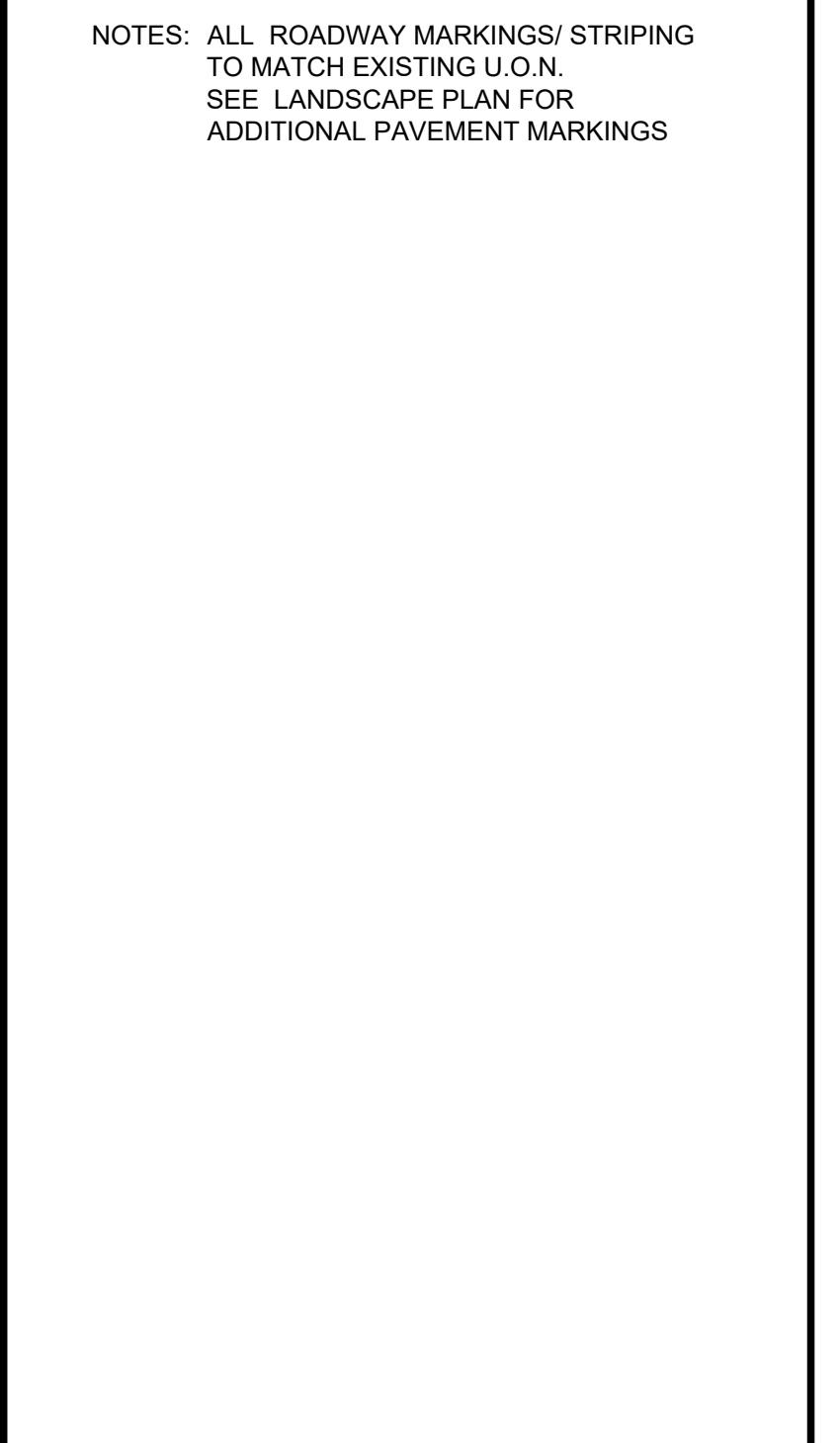


NOTES:

LEGEND

- = PROPOSED GRAY BANDED CONCRETE
- = PROPOSED MIAMI BEACH RED PIGMENTED/PATTERNED CONCRETE
- = PROPOSED MIAMI BEACH RED PIGMENTED/PATTERNED CONCRETE
- = PROPOSED MILLED AND RESURFACED PAVEMENT
- = PATTERNED DRIVABLE CONCRETE/ CONCRETE DRIVEWAYS
- = LIMITS OF WORK
- = RIGHT OF WAY

NOTES: ALL ROADWAY MARKINGS/ STRIPING TO MATCH EXISTING U.O.N. SEE LANDSCAPE PLAN FOR ADDITIONAL PAVEMENT MARKINGS



P.E. SEAL:

MIAMI BEACH
OFFICE OF CAPITAL IMPROVEMENT PROJECTS
1701 MERIDIAN AVENUE, MIAMI BEACH, FL 33139

CITY MANAGER: ALINA T. HUDAK	5		
DIRECTOR: DAVID MARTINEZ, P.E.	4		
CITY ENGINEER: CRISTINA ORTEGA CASTINEIRAS, P.E.	3		
	2		
	1		
NO.	DATE	REVISION	APP'D. BY

Stantec

SEE SEPARATE SHEET FOR REGISTERED PROFESSIONAL ENGINEER'S SEAL AND SIGNATURE.
THIS SPACE RESERVED FOR PROJECT MILESTONE

ENGINEER OF RECORD:	ENGINEER OF RECORD:
DESIGN ENGINEER: JSC	DRAWN BY: SMG
CHECKER: SMB	SCALE: 1:20

NEIGHBORHOOD:	41ST ST CORRIDOR REVITALIZATION PROJECT
TITLE:	SITE PLAN

File Name: 2023-C1-031.dwg		
Survey Reference:		
Field Book: N/A	Page: N/A	Work Order: N/A
Date: 4/17/2023	Sheet: 41 of 124	Drawing: C1-035

MATCHLINE

EXISTING MIAMI BEACH RED PIGMENTED/PATTERNED CONCRETE SIDEWALK TO REMAIN

PROPOSED 4" THICK MIAMI BEACH RED PIGMENTED/PATTERNED CONCRETE SIDEWALK

PROPOSED 6" THICK GRAY BANDED CONCRETE PARKING

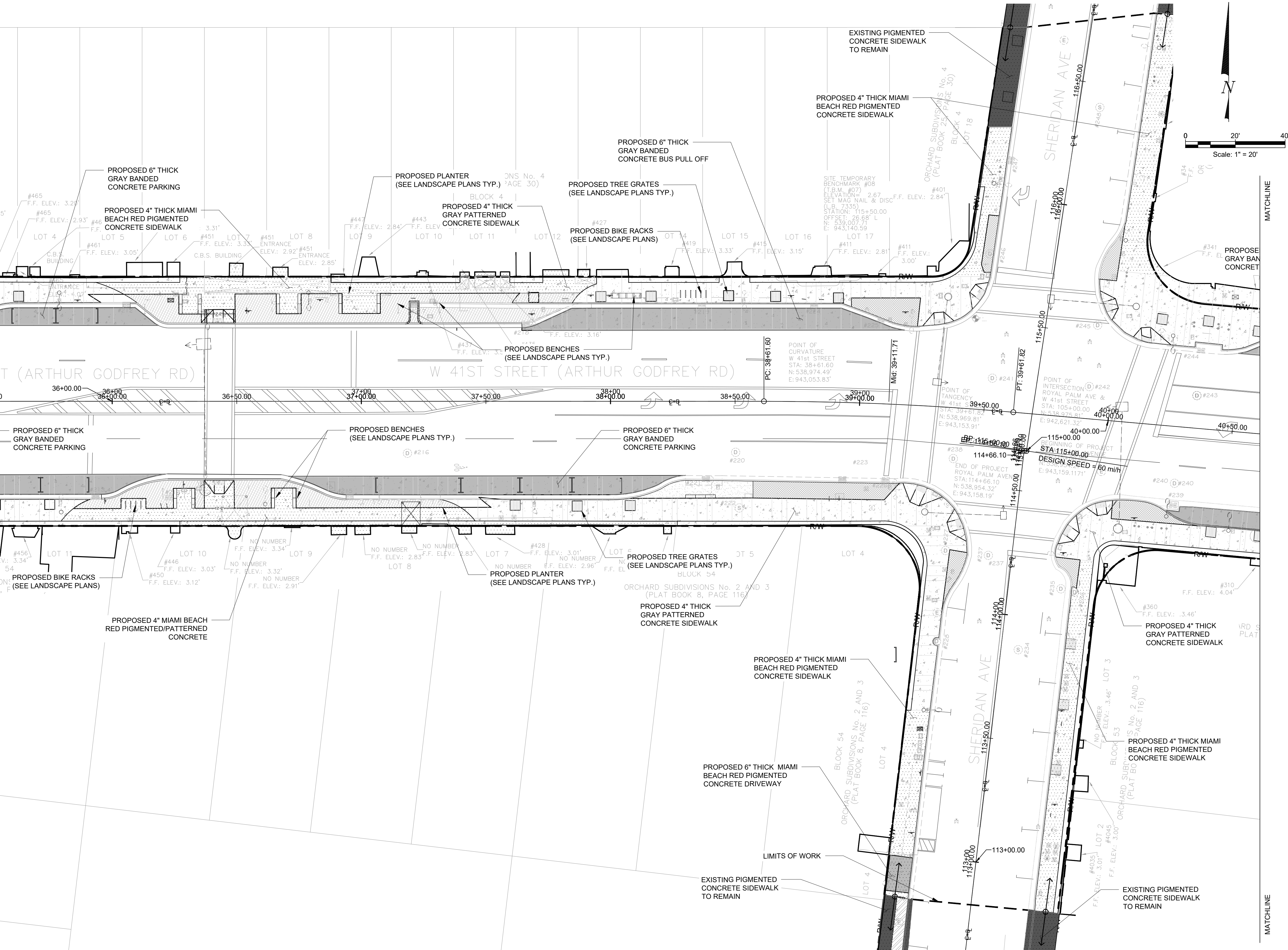
PROPOSED 4" THICK MIAMI BEACH RED PIGMENTED/PATTERNED CONCRETE SIDEWALK

PROPOSED 4" THICK MIAMI BEACH RED PIGMENTED/PATTERNED CONCRETE SIDEWALK

PROPOSED 6" THICK MIAMI BEACH RED PIGMENTED CONCRETE DRIVEWAY

EXISTING PIGMENTED CONCRETE SIDEWALK TO REMAIN

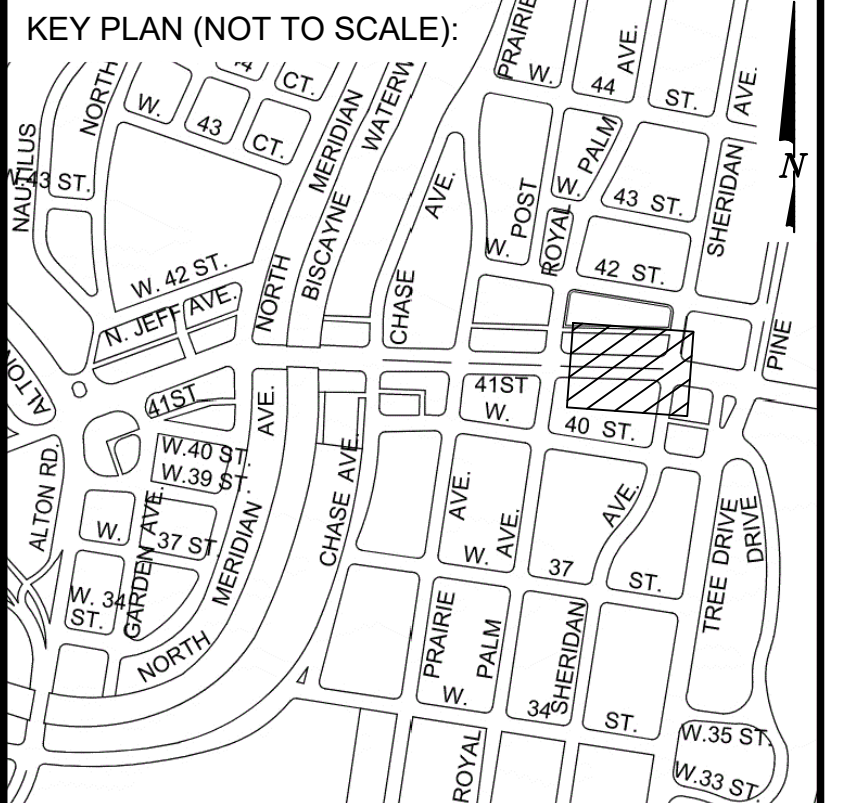
PROPOSED 4" THICK MIAMI BEACH RED PIGMENTED/PATTERNED CONCRETE SIDEWALK

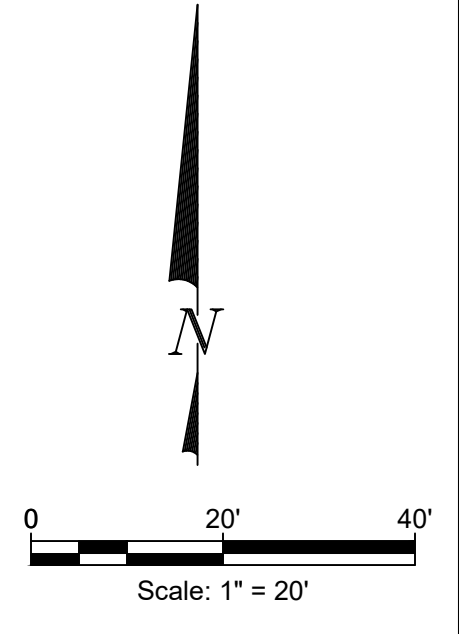
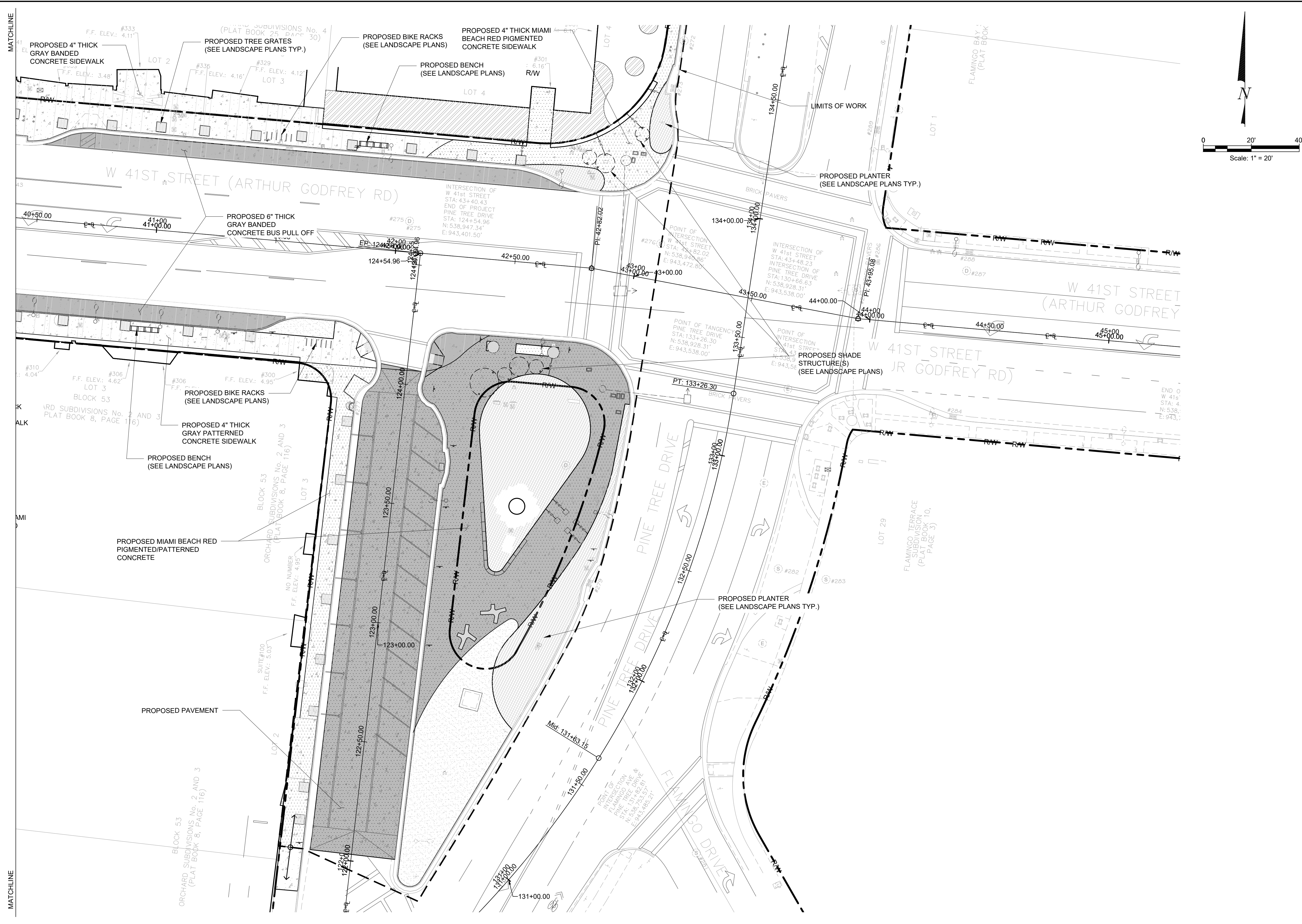


NOTES:

- LEGEND**
- = PROPOSED GRAY BANDED CONCRETE
 - = PROPOSED MIAMI BEACH RED PIGMENTED/PATTERNED CONCRETE
 - = PROPOSED MIAMI BEACH RED PIGMENTED/PATTERNED CONCRETE
 - = PROPOSED MILLED AND RESURFACED PAVEMENT
 - = PATTERNED DRIVEABLE CONCRETE/ CONCRETE DRIVEWAYS
 - = LIMITS OF WORK
 - = RIGHT OF WAY

NOTES: ALL ROADWAY MARKINGS/ STRIPING TO MATCH EXISTING U.O.N. SEE LANDSCAPE PLAN FOR ADDITIONAL PAVEMENT MARKINGS

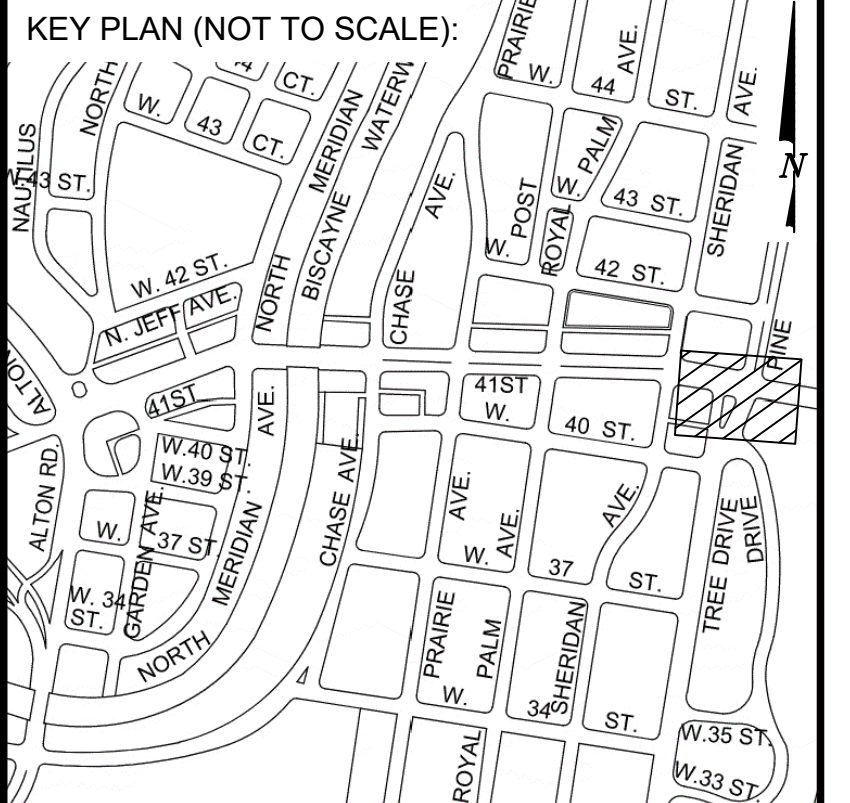




NOTES:

- LEGEND**
- = PROPOSED GRAY BANDED CONCRETE
 - = PROPOSED MIAMI BEACH RED PIGMENTED/PATTERNED CONCRETE
 - = PROPOSED MIAMI BEACH RED PIGMENTED/PATTERNED CONCRETE
 - = PROPOSED MILLED AND RESURFACED PAVEMENT
 - = PATTERNED DRIVEABLE CONCRETE/ CONCRETE DRIVEWAYS
 - = LIMITS OF WORK
 - = RIGHT OF WAY

NOTES: ALL ROADWAY MARKINGS/ STRIPING TO MATCH EXISTING U.O.N. SEE LANDSCAPE PLAN FOR ADDITIONAL PAVEMENT MARKINGS



P.E. SEAL:

MIAMI BEACH
OFFICE OF CAPITAL IMPROVEMENT PROJECTS
1701 MERIDIAN AVENUE, MIAMI BEACH, FL 33139

CITY MANAGER: ALINA T. HUDAK
DIRECTOR: DAVID MARTINEZ, P.E.
CITY ENGINEER: CRISTINA ORTEGA CASTINEIRAS, P.E.

NO.	DATE	REVISION	APPD. BY
5			
4			
3			
2			
1			



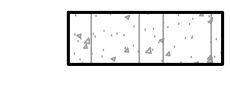
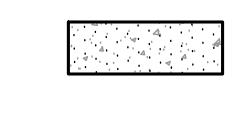
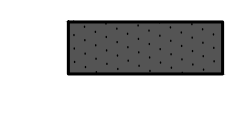
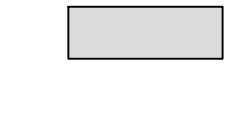

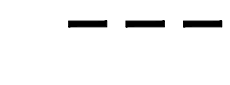

ENGINEER OF RECORD: _____
DESIGN ENGINEER: JSC
DRAWN BY: SMG
CHECKER: SMB
SCALE: 1:20

NEIGHBORHOOD: 41ST ST CORRIDOR REVITALIZATION PROJECT
TITLE: **SITE PLAN**

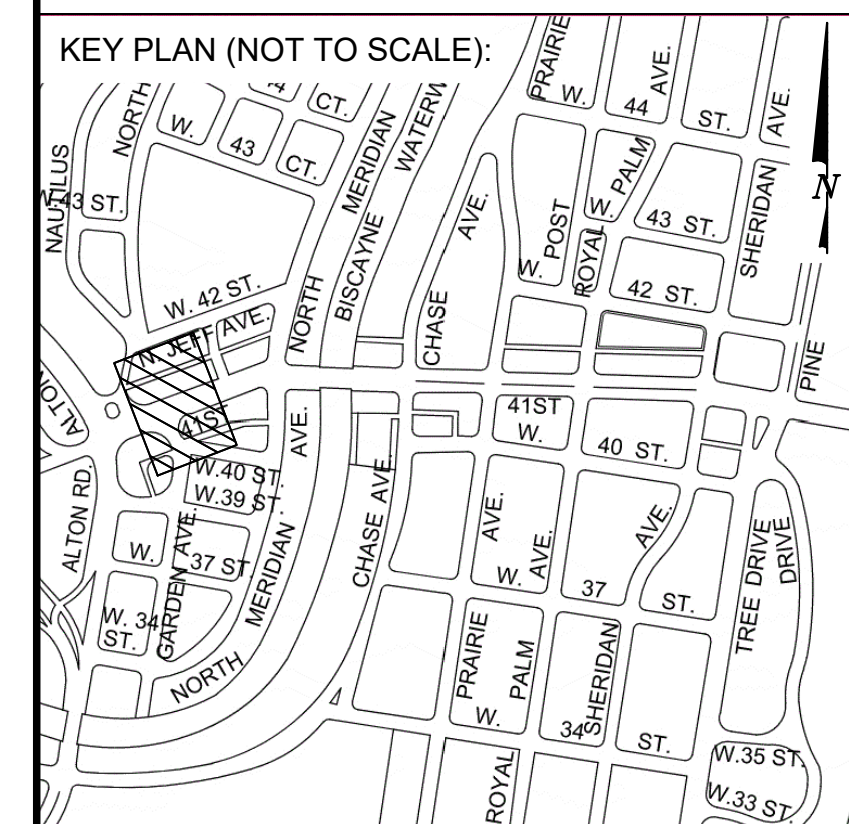
File Name: 2023-C1-031.dwg
Survey Reference: _____
Field Book: N/A Page: N/A Work Order: N/A
Date: 4/17/2023 Sheet: 43 of 124 Drawing: C1-037

NOTES:

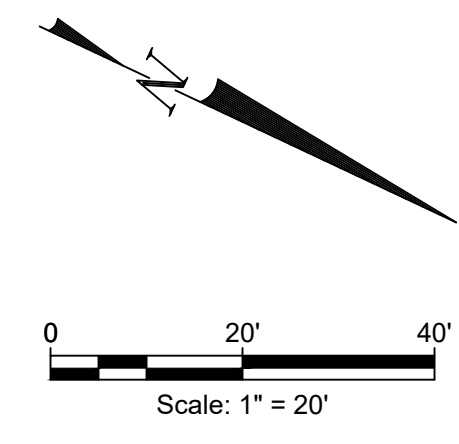
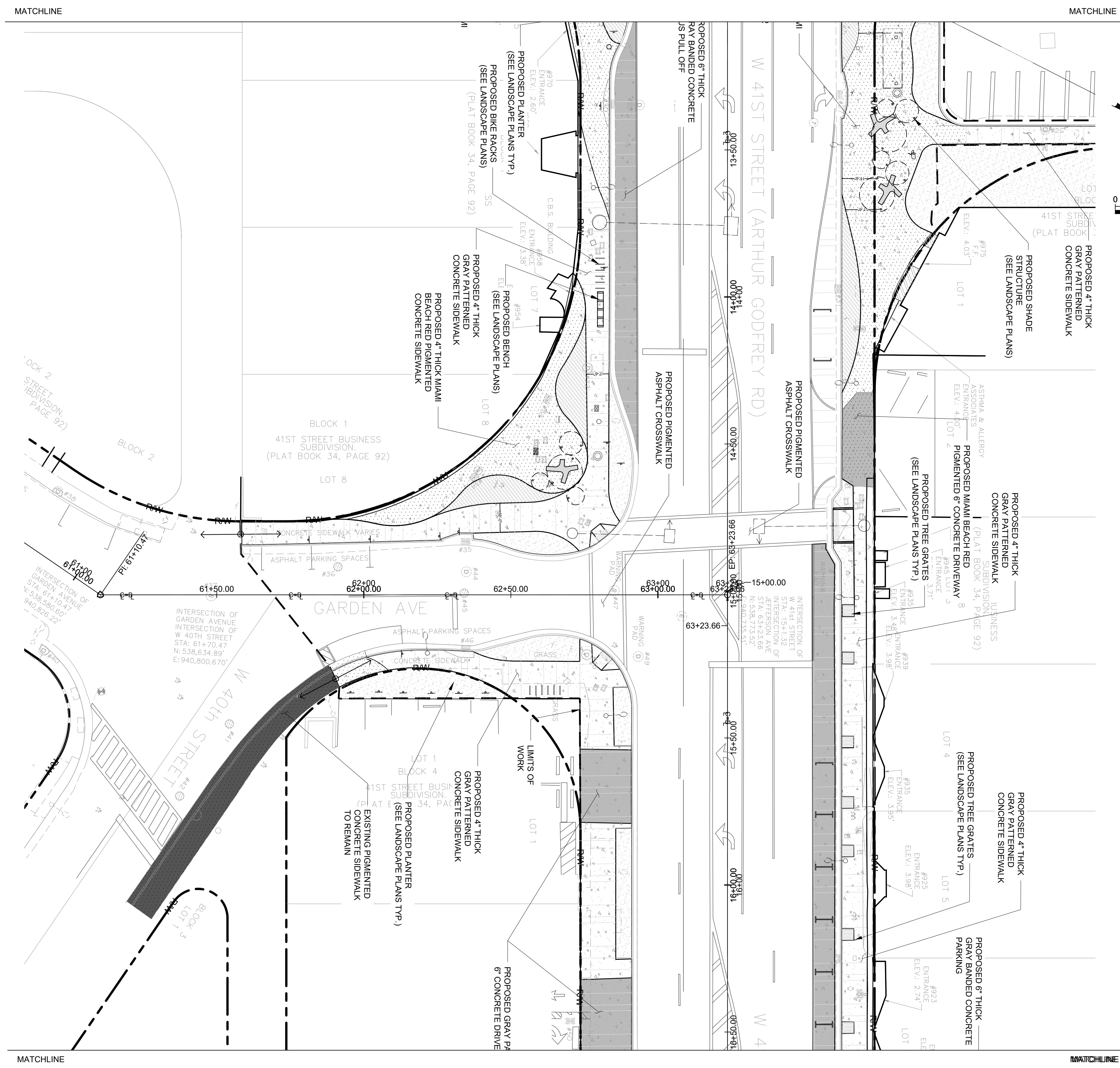
LEGEND

-  = PROPOSED GRAY BANDED CONCRETE
-  = PROPOSED MIAMI BEACH RED PIGMENTED/PATTERNED CONCRETE
-  = PROPOSED MIAMI BEACH RED PIGMENTED/PATTERNED CONCRETE
-  = PROPOSED MILLED AND RESURFACED PAVEMENT
-  = PATTERNED DRIVEABLE CONCRETE/ CONCRETE DRIVEWAYS
-  = LIMITS OF WORK
-  = RIGHT OF WAY

NOTES: ALL ROADWAY MARKINGS/ STRIPING TO MATCH EXISTING U.O.N. SEE LANDSCAPE PLAN FOR ADDITIONAL PAVEMENT MARKINGS



P.E. SEAL:



THIS SPACE RESERVED FOR PROJECT MILESTONE



OFFICE OF CAPITAL IMPROVEMENT PROJECTS
1701 MERIDIAN AVENUE, MIAMI BEACH, FL 33139

CITY MANAGER: ALINA T. HUDAK
DIRECTOR: DAVID MARTINEZ, P.E.
CITY ENGINEER: CRISTINA ORTEGA CASTINEIRAS, P.E.

NO.	DATE	REVISION	APPD. BY
5			
4			
3			
2			
1			

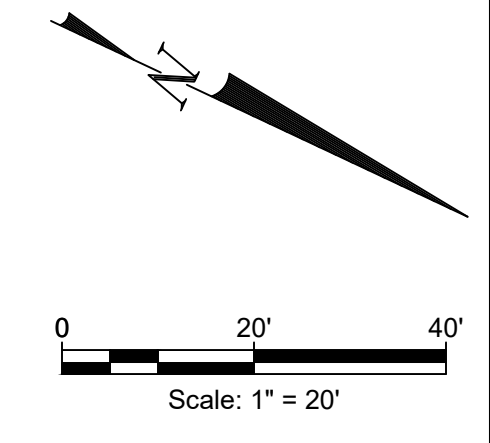
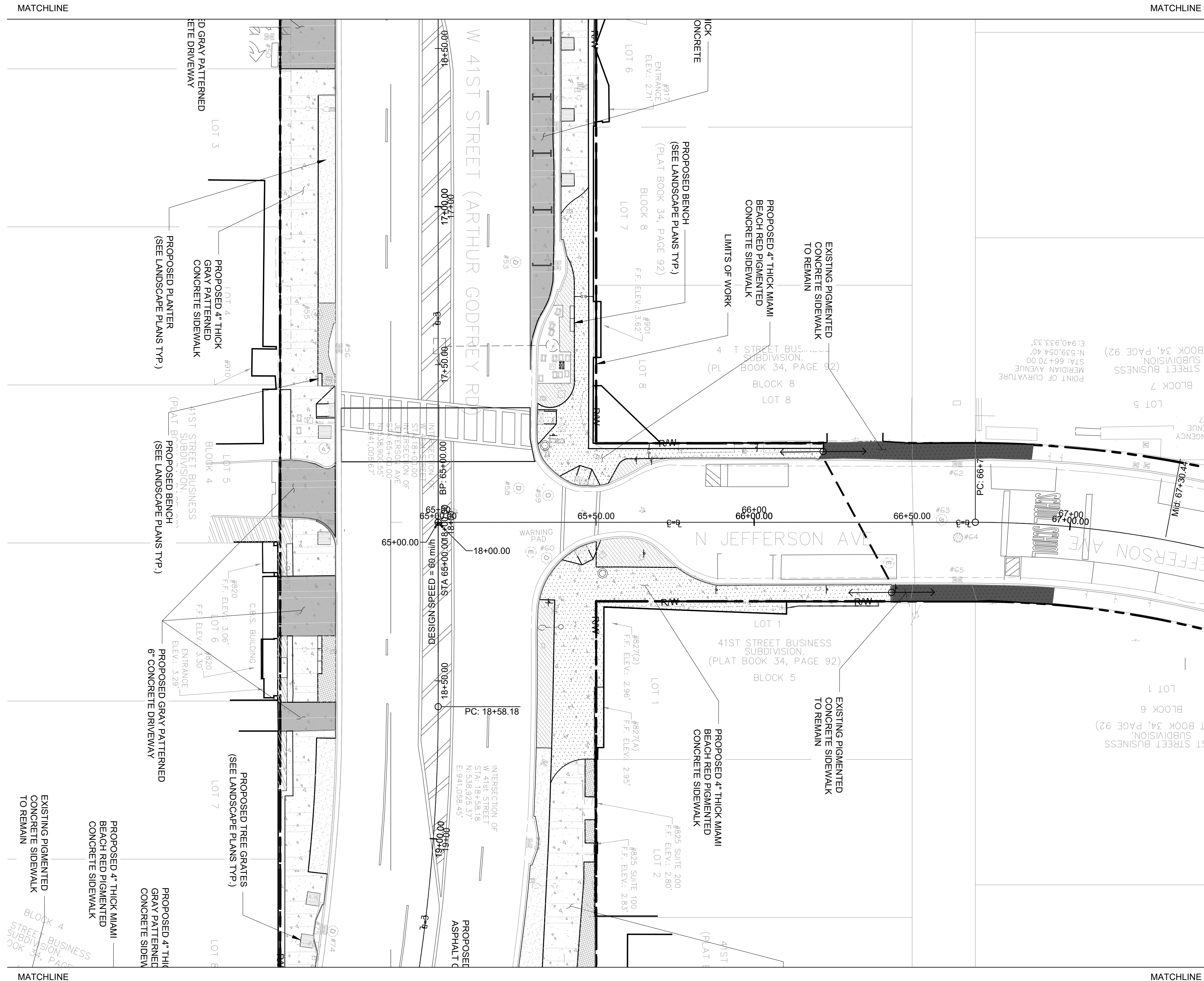


ENGINEER OF RECORD: _____

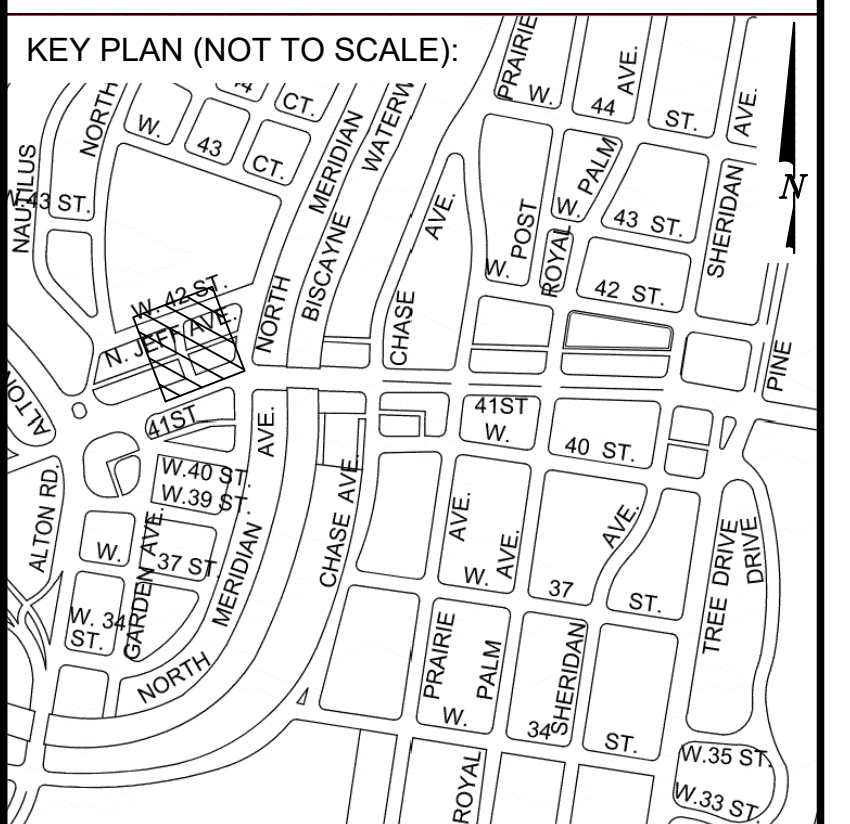
ENGINEER OF RECORD: _____
DESIGN ENGINEER: JSC
DRAWN BY: SMG
CHECKER: SMB
SCALE: 1:20

NEIGHBORHOOD: 41ST ST CORRIDOR REVITALIZATION PROJECT
TITLE: SITE PLAN

File Name: 2023-C1-031.dwg
Survey Reference:
Field Book: N/A Page: N/A Work Order: N/A
Date: 4/17/2023 Sheet: 45 of 124 Drawing: C1-039



- NOTES:**
- LEGEND**
- = PROPOSED GRAY BANDED CONCRETE
 - = PROPOSED MIAMI BEACH RED PIGMENTED/PATTERNED CONCRETE
 - = PROPOSED MIAMI BEACH RED PIGMENTED/PATTERNED CONCRETE
 - = PROPOSED MILLED AND RESURFACED PAVEMENT
 - = PATTERNED DRIVEABLE CONCRETE/ CONCRETE DRIVEWAYS
 - = LIMITS OF WORK
 - = RIGHT OF WAY
- NOTES:** ALL ROADWAY MARKINGS/ STRIPING TO MATCH EXISTING U.O.N. SEE LANDSCAPE PLAN FOR ADDITIONAL PAVEMENT MARKINGS



P.E. SEAL:

MIAMI BEACH
OFFICE OF CAPITAL IMPROVEMENT PROJECTS
 1701 MERIDIAN AVENUE, MIAMI BEACH, FL 33139

CITY MANAGER: ALINA T. HUDAK	5		
DIRECTOR: DAVID MARTINEZ, P.E.	4		
CITY ENGINEER: CRISTINA ORTEGA CASTINEIRAS, P.E.	3		
	2		
	1		
NO.	DATE	REVISION	APPD. BY

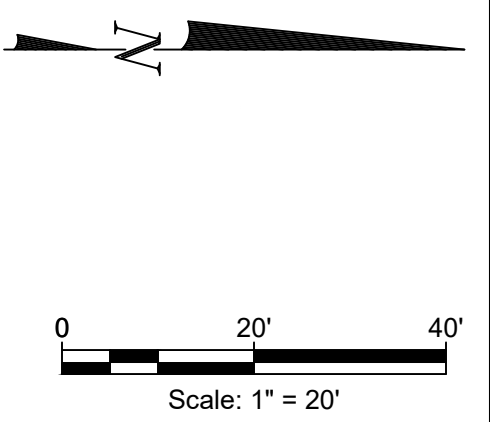
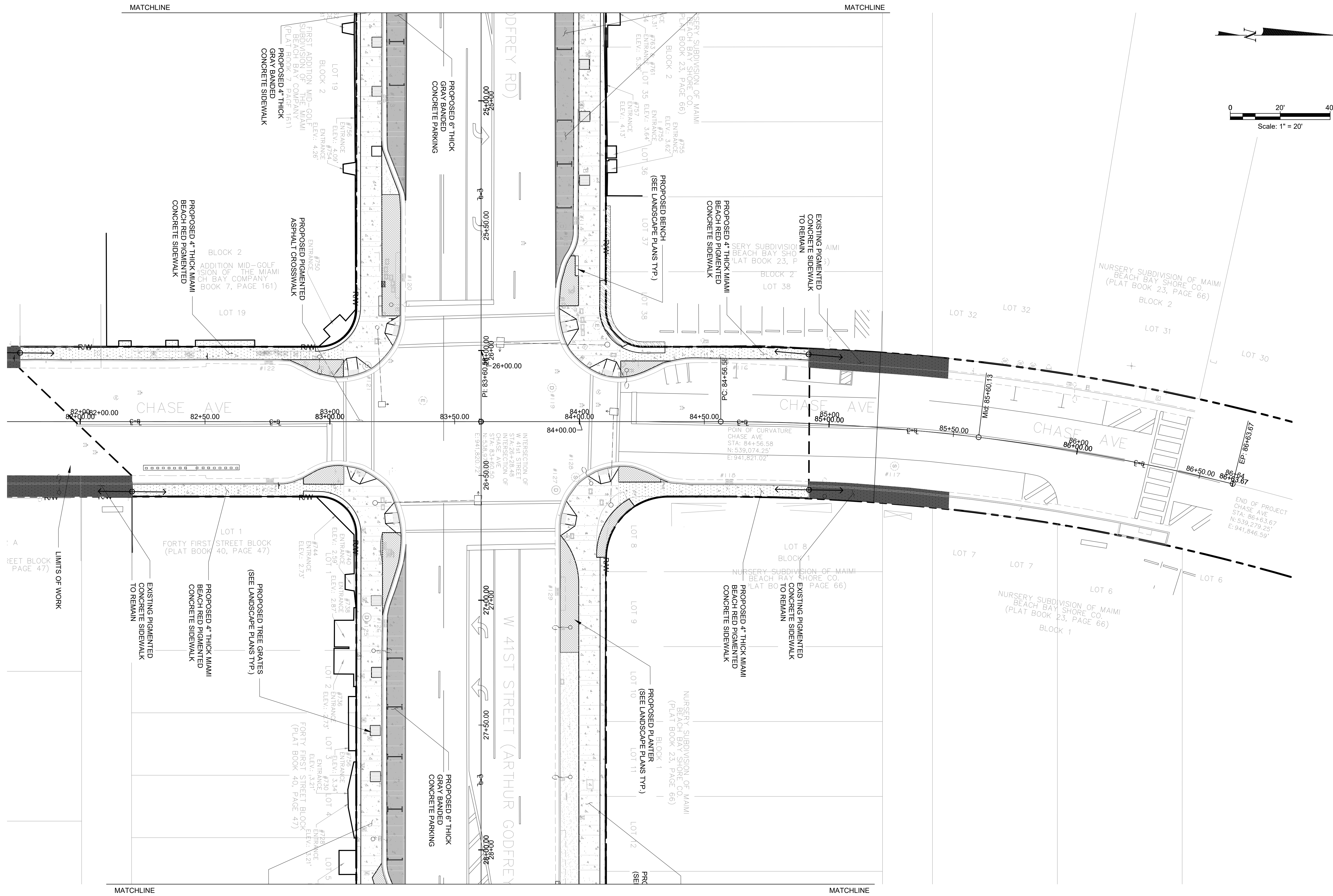
Stantec
 8850 BAYVIEW DRIVE
 DORTCH, MASSACHUSETTS, U.S.A.
 www.stantec.com

ENGINEER OF RECORD: _____
DESIGN ENGINEER: JSC
DRAWN BY: SMG
CHECKER: SMB
SCALE: 1:20

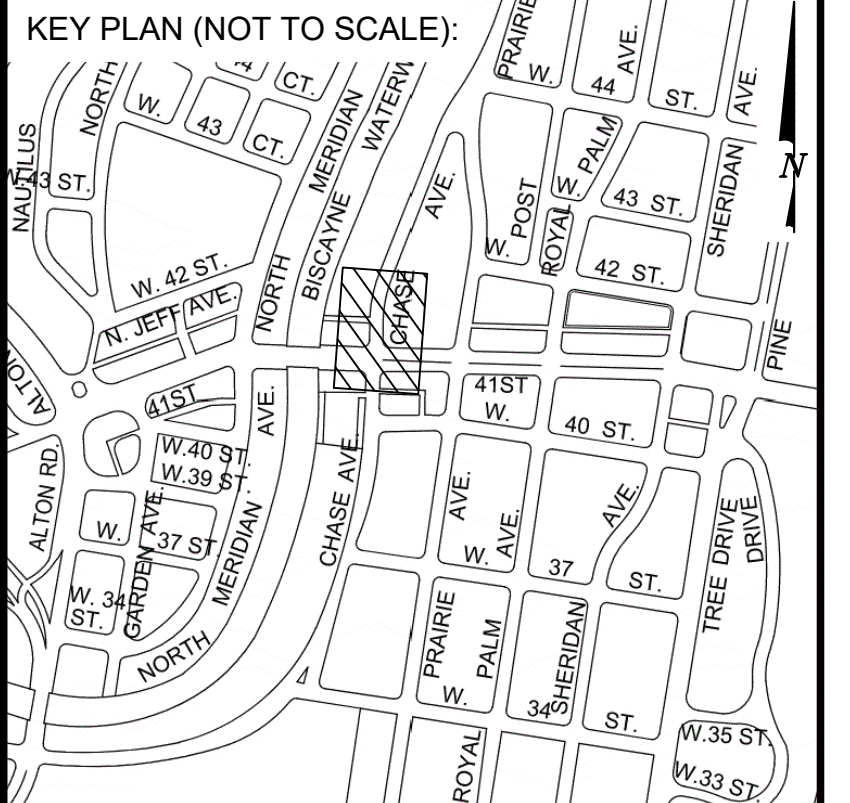
NEIGHBORHOOD: 41ST ST CORRIDOR REVITALIZATION PROJECT
TITLE: **SITE PLAN**

File Name: 2023-C1-031.dwg
 Survey Reference:
 Field Book: N/A Page: N/A Work Order: N/A
 Date: 4/17/2023 Sheet: 46 of 124 Drawing: C1-040

THIS SPACE RESERVED FOR PROJECT MILESTONE



- NOTES:**
- LEGEND**
- = PROPOSED GRAY BANDED CONCRETE
 - = PROPOSED MIAMI BEACH RED PIGMENTED/PATTERNED CONCRETE
 - = PROPOSED MIAMI BEACH RED PIGMENTED/PATTERNED CONCRETE
 - = PROPOSED MILLED AND RESURFACED PAVEMENT
 - = PATTERNED DRIVEABLE CONCRETE/ CONCRETE DRIVEWAYS
 - = LIMITS OF WORK
 - = RIGHT OF WAY
- NOTES:** ALL ROADWAY MARKINGS/ STRIPING TO MATCH EXISTING U.O.N. SEE LANDSCAPE PLAN FOR ADDITIONAL PAVEMENT MARKINGS



P.E. SEAL:

MIAMI BEACH
OFFICE OF CAPITAL IMPROVEMENT PROJECTS
 1701 MERIDIAN AVENUE, MIAMI BEACH, FL 33139

CITY MANAGER: ALINA T. HUDAK
 DIRECTOR: DAVID MARTINEZ, P.E.
 CITY ENGINEER: CRISTINA ORTEGA CASTINEIRAS, P.E.

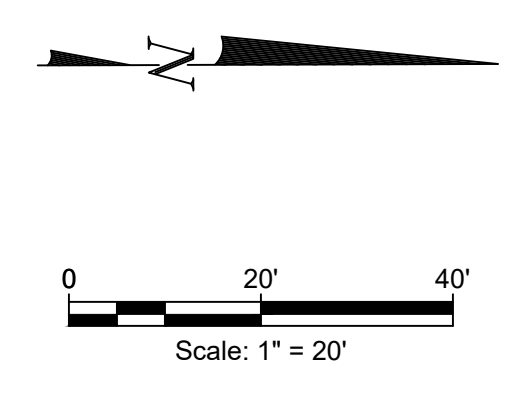
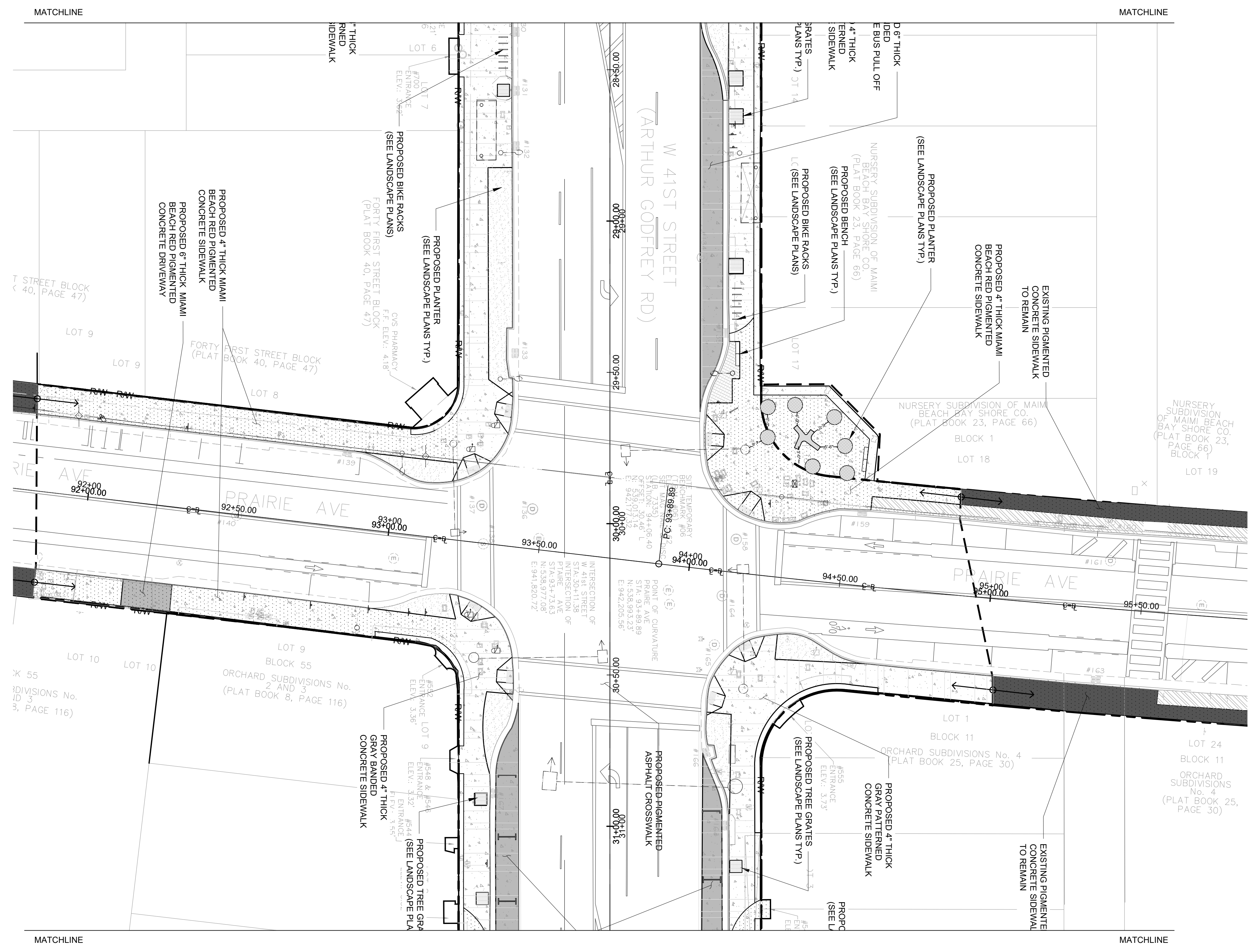
NO.	DATE	REVISION	APPD. BY
5			
4			
3			
2			
1			

Stantec
 8880 BAYVIEW DRIVE
 SUITE 200
 MIAMI BEACH, FL 33154
 WWW.STANTEC.COM

ENGINEER OF RECORD: _____
 DESIGN ENGINEER: JSC
 DRAWN BY: SMG
 CHECKER: SMB
 SCALE: 1:20

NEIGHBORHOOD: 41ST ST CORRIDOR REVITALIZATION PROJECT
 TITLE: **SITE PLAN**

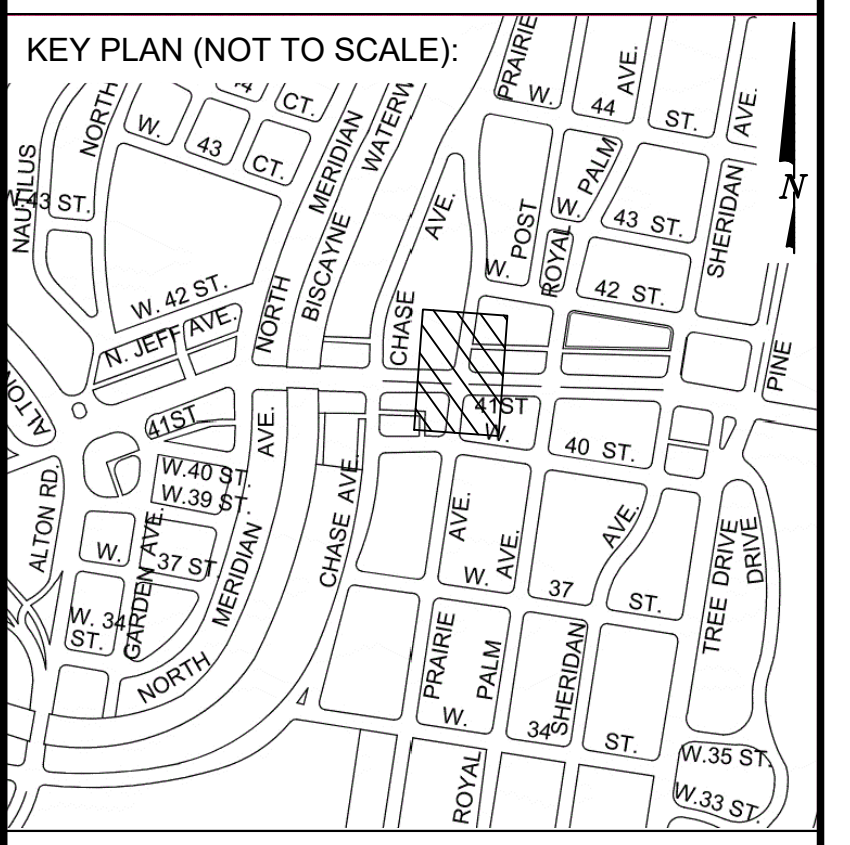
File Name: 2023-C1-031.dwg
 Survey Reference:
 Field Book: N/A Page: N/A Work Order: N/A
 Date: 4/17/2023 Sheet: 48 of 124 Drawing: C1-042



NOTES:

- LEGEND**
- = PROPOSED GRAY BANDED CONCRETE
 - = PROPOSED MIAMI BEACH RED PIGMENTED/PATTERNED CONCRETE
 - = PROPOSED MIAMI BEACH RED PIGMENTED/PATTERNED CONCRETE
 - = PROPOSED MILLED AND RESURFACED PAVEMENT
 - = PATTERNED DRIVEABLE CONCRETE/ CONCRETE DRIVEWAYS
 - = LIMITS OF WORK
 - = RIGHT OF WAY

NOTES: ALL ROADWAY MARKINGS/ STRIPING TO MATCH EXISTING U.O.N. SEE LANDSCAPE PLAN FOR ADDITIONAL PAVEMENT MARKINGS



MIAMI BEACH
OFFICE OF CAPITAL IMPROVEMENT PROJECTS
 1701 MERIDIAN AVENUE, MIAMI BEACH, FL 33139

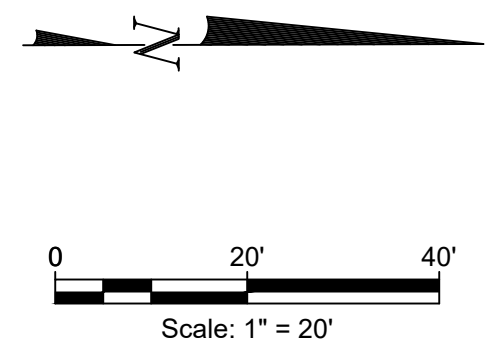
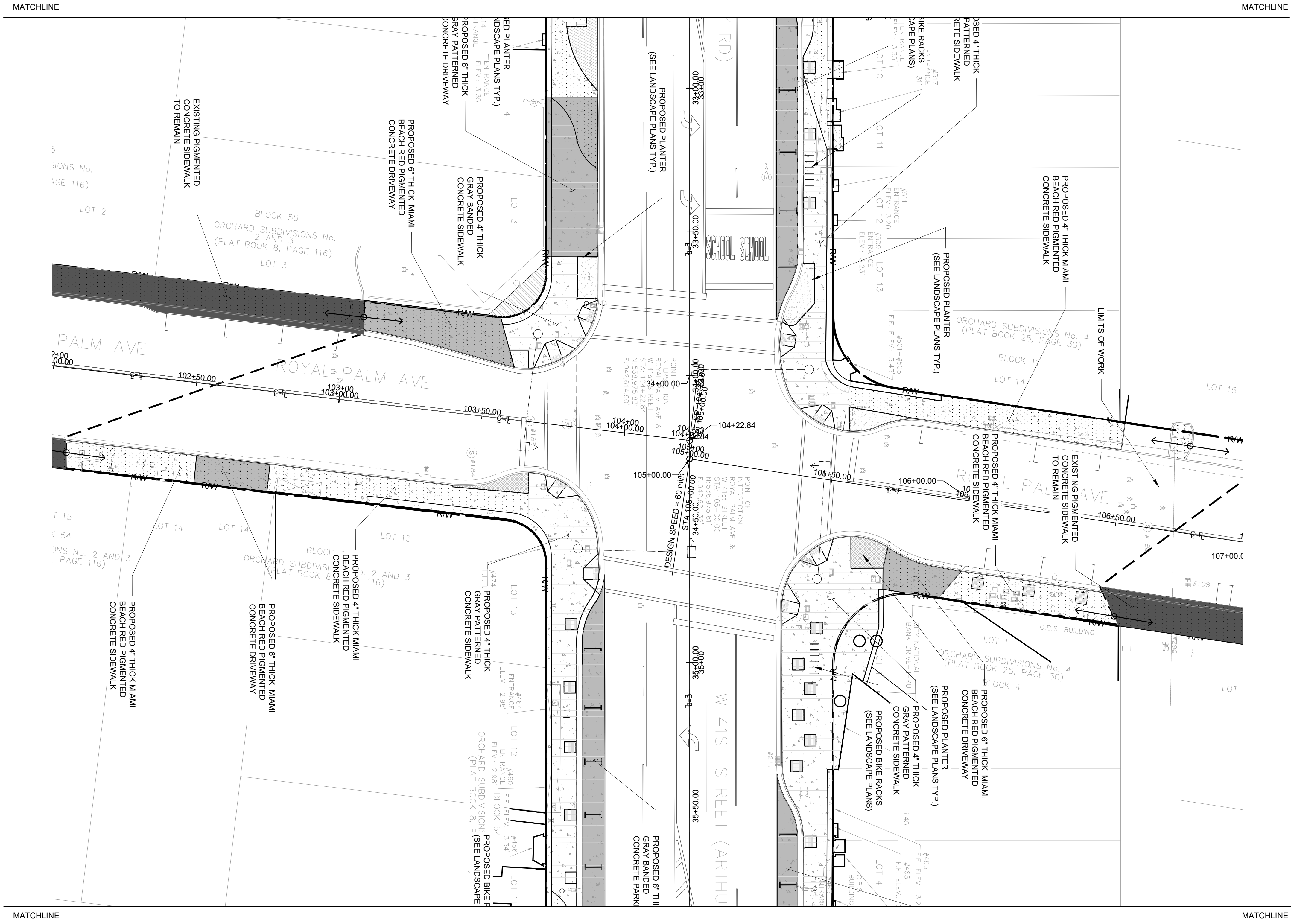
CITY MANAGER: ALINA T. HUDAK	5			
DIRECTOR: DAVID MARTINEZ, P.E.	4			
CITY ENGINEER: CRISTINA ORTEGA CASTINEIRAS, P.E.	3			
	2			
	1			
NO.	DATE	REVISION	APPD. BY	

Stantec
 8880 BAYVIEW DRIVE
 SUITE 200
 MIAMI BEACH, FL 33154
 TEL: 305.672.7000
 WWW.STANTEC.COM

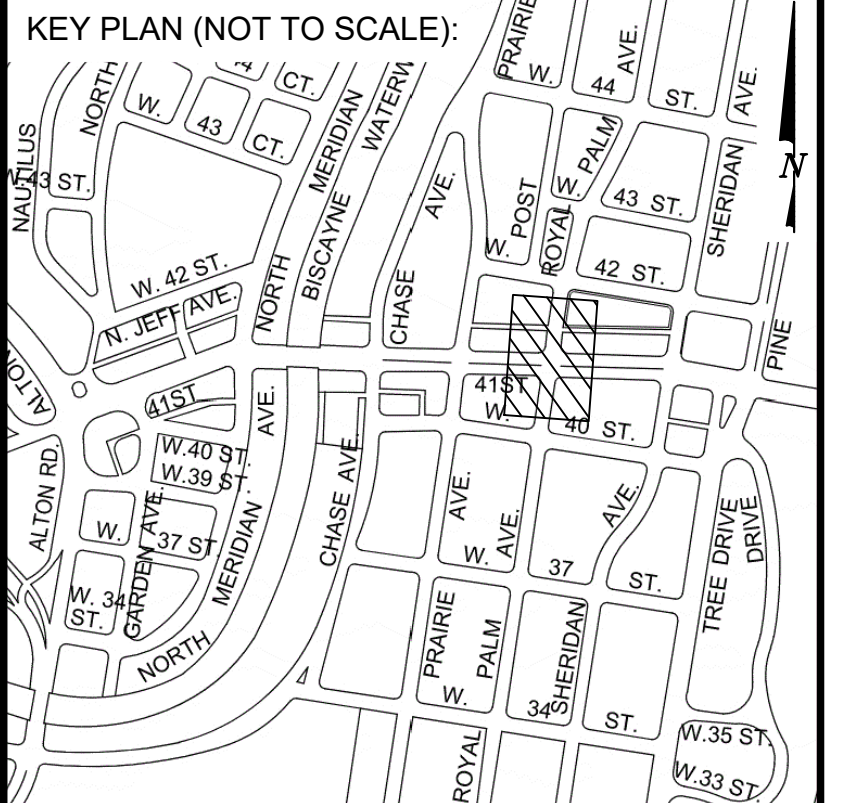
ENGINEER OF RECORD:	ENGINEER OF RECORD: _____
DESIGN ENGINEER: JSC	DRAWN BY: SMG
CHECKER: SMB	SCALE: 1:20

NEIGHBORHOOD:	41ST ST CORRIDOR REVITALIZATION PROJECT
TITLE:	SITE PLAN

File Name: 2023-C1-031.dwg	Survey Reference:
Field Book: N/A	Page: N/A
Work Order: N/A	Date: 4/17/2023
Sheet: 49 of 124	Drawing: C1-043



- NOTES:**
- LEGEND**
- = PROPOSED GRAY BANDED CONCRETE
 - = PROPOSED MIAMI BEACH RED PIGMENTED/PATTERNED CONCRETE
 - = PROPOSED MIAMI BEACH RED PIGMENTED/PATTERNED CONCRETE
 - = PROPOSED MILLED AND RESURFACED PAVEMENT
 - = PATTERNED DRIVEABLE CONCRETE/ CONCRETE DRIVEWAYS
 - = LIMITS OF WORK
 - = RIGHT OF WAY
- NOTES:** ALL ROADWAY MARKINGS/ STRIPING TO MATCH EXISTING U.O.N. SEE LANDSCAPE PLAN FOR ADDITIONAL PAVEMENT MARKINGS



P.E. SEAL:

MIAMI BEACH
OFFICE OF CAPITAL IMPROVEMENT PROJECTS
 1701 MERIDIAN AVENUE, MIAMI BEACH, FL 33139

CITY MANAGER: ALINA T. HUDAK
 DIRECTOR: DAVID MARTINEZ, P.E.
 CITY ENGINEER: CRISTINA ORTEGA CASTINEIRAS, P.E.

NO.	DATE	REVISION	APPD. BY
5			
4			
3			
2			
1			

Stantec
 1000 BAYVIEW DRIVE
 SUITE 1000
 MIAMI BEACH, FL 33139
 TEL: 305.440.2200
 WWW.STANTEC.COM

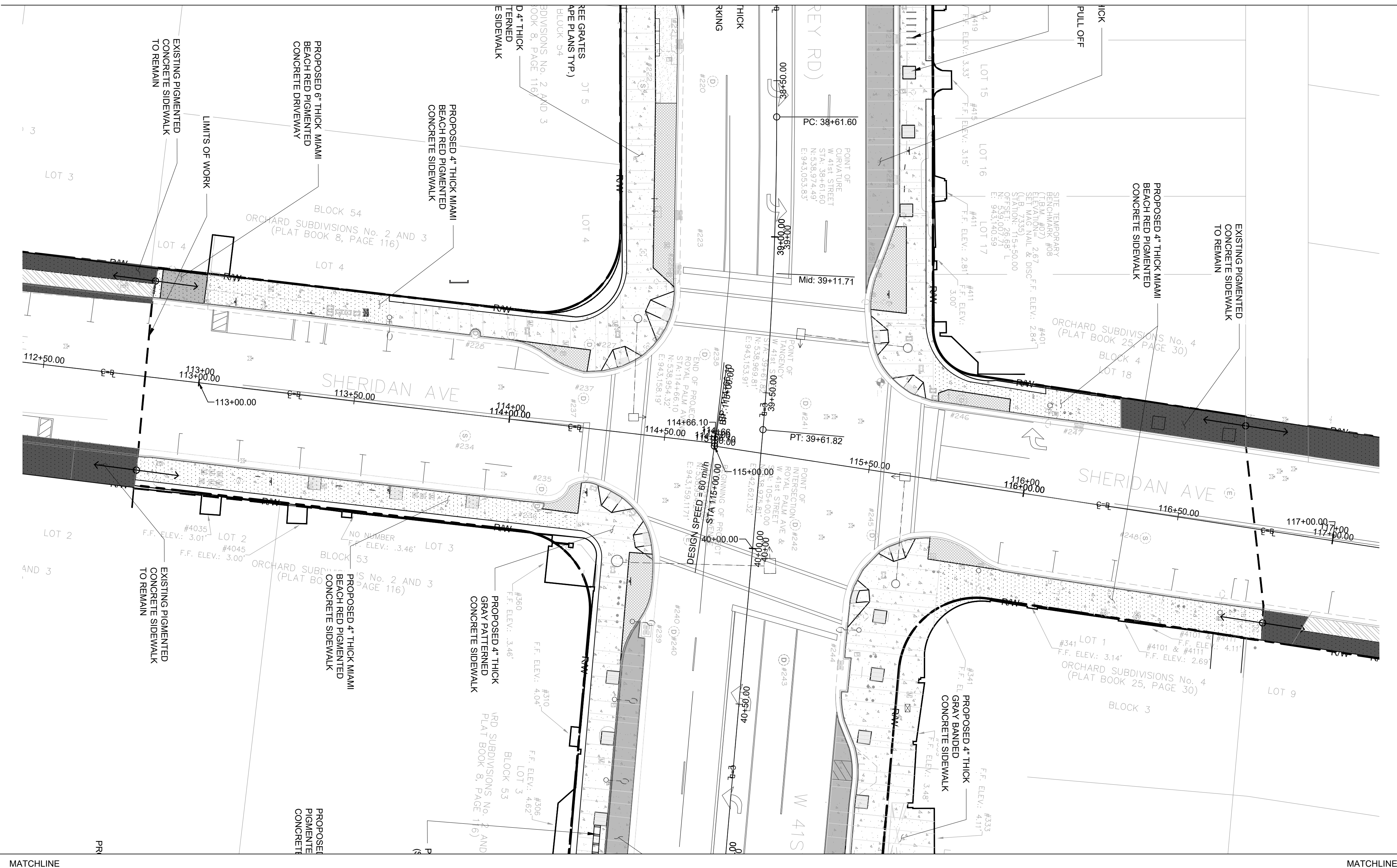
ENGINEER OF RECORD: _____
 DESIGN ENGINEER: JSC
 DRAWN BY: SMG
 CHECKER: SMB
 SCALE: 1:20

NEIGHBORHOOD: 41ST ST CORRIDOR REVITALIZATION PROJECT
 TITLE: **SITE PLAN**

File Name: 2023-C1-031.dwg
 Survey Reference:
 Field Book: N/A Page: N/A Work Order: N/A
 Date: 4/17/2023 Sheet: 50 of 124 Drawing: C1-044

MATCHLINE

MATCHLINE



MATCHLINE

MATCHLINE

NOTES:

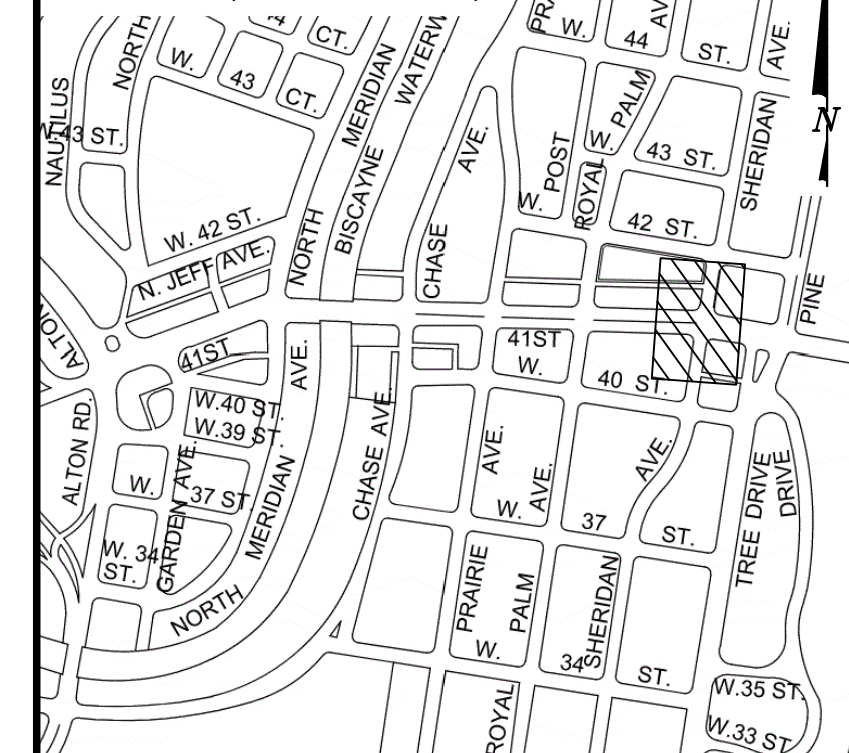
LEGEND

- = PROPOSED GRAY BANDED CONCRETE
- = PROPOSED MIAMI BEACH RED PIGMENTED/PATTERNED CONCRETE
- = PROPOSED MIAMI BEACH RED PIGMENTED/PATTERNED CONCRETE
- = PROPOSED MILLED AND RESURFACED PAVEMENT
- = PATTERNED DRIVEABLE CONCRETE/ CONCRETE DRIVEWAYS
- = LIMITS OF WORK
- = RIGHT OF WAY

NOTES: ALL ROADWAY MARKINGS/ STRIPING TO MATCH EXISTING U.O.N. SEE LANDSCAPE PLAN FOR ADDITIONAL PAVEMENT MARKINGS



KEY PLAN (NOT TO SCALE):



P.E. SEAL:

MIAMI BEACH

OFFICE OF CAPITAL IMPROVEMENT PROJECTS
1701 MERIDIAN AVENUE, MIAMI BEACH, FL 33139

CITY MANAGER: ALINA T. HUDAK
 DIRECTOR: DAVID MARTINEZ, P.E.
 CITY ENGINEER: CRISTINA ORTEGA CASTINEIRAS, P.E.

NO.	DATE	REVISION	APPD. BY
5			
4			
3			
2			
1			



ENGINEER OF RECORD:

ENGINEER OF RECORD: _____
 DESIGN ENGINEER: JSC
 DRAWN BY: SMG
 CHECKER: SMB
 SCALE: 1:20

NEIGHBORHOOD:

41ST ST CORRIDOR REVITALIZATION PROJECT

TITLE:

SITE PLAN

File Name: 2023-C1-031.dwg

Survey Reference:

Field Book: N/A Page: N/A Work Order: N/A

Date: 4/17/2023 Sheet: 51 of 124 Drawing: C1-045