

1100 5th Street

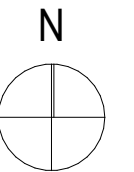
Miami Beach, FL 33139



PROJECT LOCATION :: NTS

SHEET INDEX DRB File Number DRB23-0982 April 7, 2024

ID	SHEET TITLE	DRB FIRST SUBMITTAL 02.18.24	FINAL SUBMITTAL 03.10.24	CONT'D FINAL SUBMITTAL 04.07.24
SK01	VERGE EXHIBIT			
L001	COVER SHEET	•	•	•
L002	TREE DISPOSITION PLAN	•	•	•
L003	TREE DISPOSITION SCHEDULE	•	•	•
L004	LANDSCAPE LEGEND	•	•	•
L101	GROUND FLOOR HARDSCAPE PLAN	•	•	•
L202	SECOND FLOOR HARDSCAPE PLAN		•	•
L103	THIRD FLOOR HARDSCAPE PLAN		•	•
L104	ROOF HARDSCAPE PLAN		•	•
L201	GROUND FLOOR PLANTING PLAN	•	•	•
L202	SECOND FLOOR LANDSCAPE PLAN	•	•	•
L203	THIRD FLOOR PLANTING PLAN	•	•	•
L204	ROOF PLANTING PLAN	•	•	•
L205	PLANTING NOTES AND DETAILS	•	•	•
L206	PLANTING PALETTE		•	•
L207	PLANTING PALETTE		•	•
L300	SIDEWALK SECTIONS		•	•
L301	SIDEWALK SECTIONS		•	•
L302	NORTH ELEVATION		•	•
L303	EAST ELEVATION		•	•
L304	SOUTH ELEVATION		•	•
L305	WEST ELEVATION		•	•
L401	SITE LIGHTING	•	•	•



COVER SHEET

Scale: 1" = 30'-0"

1100 5th Street

Miami Beach, Florida

Zoning Data

April 7, 2024

No copies, transmissions, reproductions, or electronic revisions of any portions of these drawings in whole or in part be made without the express written permission of Zyscovich, LLC. All designs indicated in these drawings are property of Zyscovich, LLC. All copyrights reserved © 2023.



URBAN ROBOT ASSOCIATES

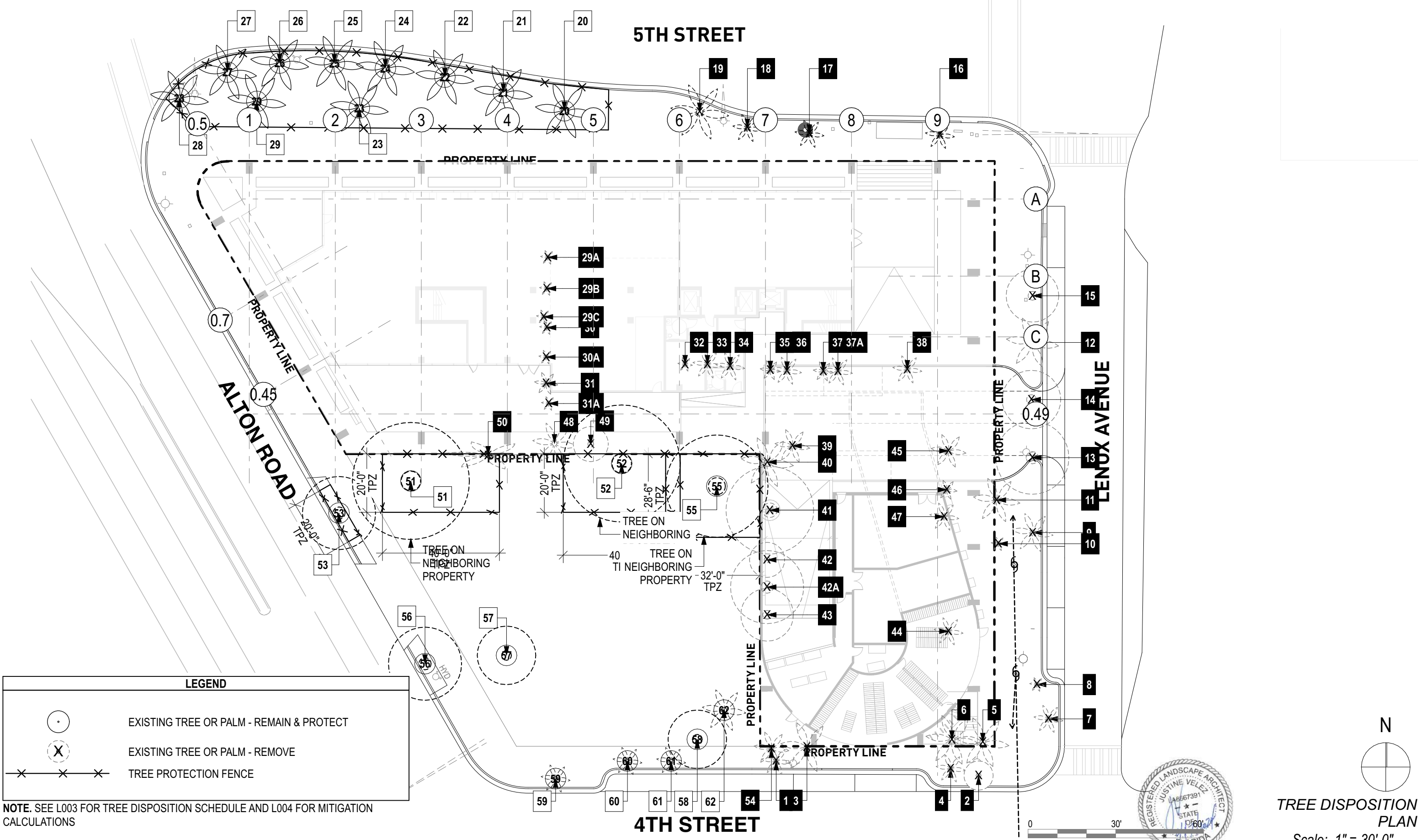
Souto Moura Arquitectos S.A.

ZYSCOVICH

100 N Biscayne Blvd. 27th Fl
Miami, FL 33132.2304
t 305.372.5222 f 305.577.4521

e info@zyscovich.com
w www.zyscovich.com

L001



NOTE. SEE L003 FOR TREE DISPOSITION SCHEDULE AND L004 FOR MITIGATION CALCULATIONS

1100 5th Street

Miami Beach, Florida

Zoning Data

April 7, 2024

No copies, transmissions, reproductions, or electronic revisions of any portions of these drawings in whole or in part be made without the express written permission of Zyscovich, LLC. All designs indicated in these drawings are property of Zyscovich, LLC. All copyrights reserved © 2023.



URBAN ROBOT ASSOCIATES

Souto Moura Arquitectos S.A.

ZYSCOVICH

100 N Biscayne Blvd. 27th Fl
Miami, FL 33132.2304
t 305.372.5222 f 305.577.4521

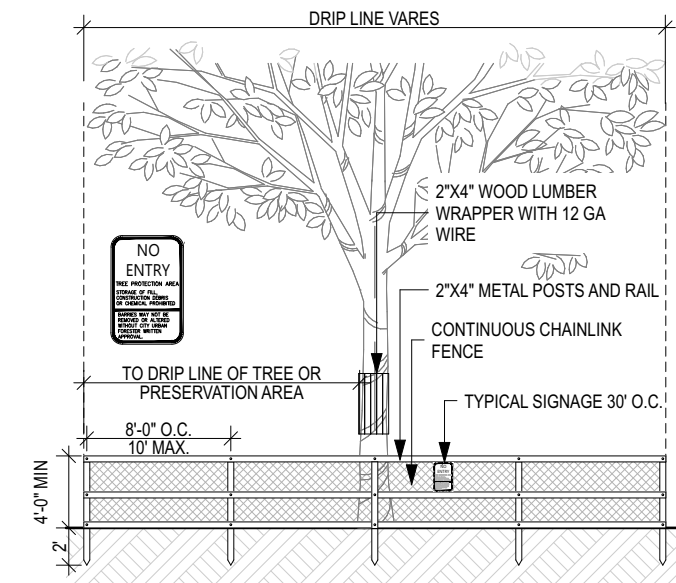
e info@zyscovich.com
w www.zyscovich.com

L002

Existing Tree Schedule											
Symbol	ID	Botanical Name	Common Name	DBH	Height	Spread	Condition	Native	TPZ Radius	Status	Notes
X	1	Veitchia arecina	Montgomery Palm	7"	25'	10'	Good	N	10'	REMOVE	Street Tree
X	2	Tabebuia bahamensis	Dwarf Trumpet Tree	4"	16'	10'	Fair	N	10'	REMOVE	Street Tree
X	3	Roystonea regia	Royal Palm	20"	60'	18'	Good	Y	10'	REMOVE	
X	4	Veitchia arecina	Montgomery Palm	7"	30'	10'	Good	N	10'	REMOVE	Street Tree
X	5	Roystonea regia	Royal Palm	17"	45'	18'	Good	Y	10'	REMOVE	
X	6	Roystonea Regia	Royal Palm	14"	55'	18'	Good	Y	10'	REMOVE	
X	7	Veitchia arecina	Montgomery Palm	8"	30'	10'	Fair	N	10'	REMOVE	Street Tree
X	8	Veitchia arecina	Montgomery Palm	7"	25'	5'	Poor	N	10'	REMOVE	Street Tree
X	9	Roystonea regia	Royal Palm	20"	50'	14'	Fair	Y	10'	REMOVE	Street Tree
X	10	Roystonea regia	Royal Palm	15"	40'	5'	Poor	Y	10'	REMOVE	Street Tree
X	11	Roystonea regia	Royal Palm	15	40'	16'	Good	Y	10'	REMOVE	Street Tree
X	12	Roystonea regia	Royal Palm	17"	40'	18'	Good	Y	10'	REMOVE	Street Tree
X	13	Quercus virginiana	Live oak	14"	25'	25'	Good	Y	12.5'	REMOVE	Street Tree
X	14	Quercus virginiana	Live oak	9"	25'	20'	Good	Y	10'	REMOVE	Street Tree
X	15	Quercus virginiana	Live oak	10"	25'	18'	Good	Y	10'	REMOVE	Street Tree
X	16	Roystonea regia	Royal Palm	18"	50'	12'	Fair	Y	10'	REMOVE	Street Tree
X	17	Roystonea regia	Royal Palm	14"	40'	20'	Good	Y	10'	REMOVE	Street Tree
X	18	Roystonea regia	Royal Palm	16"	45'	18'	Fair	Y	10'	REMOVE	Street Tree
X	19	Roystonea regia	Royal Palm	19"	60'	20'	Good	Y	10'	REMOVE	Street Tree
X	20	Phoenix dactylifera	Canary Date Palm	19"	40'	20'	Good	N	10'	PROTECT	Street Tree
X	21	Phoenix dactylifera	Canary Date Palm	19"	40'	20'	Good	N	10'	PROTECT	Street Tree
X	22	Phoenix dactylifera	Canary Date Palm	19"	40'	20'	Good	N	10'	PROTECT	Street Tree
X	23	Phoenix dactylifera	Canary Date Palm	19"	40'	20'	Good	N	10'	PROTECT	Street Tree
X	24	Phoenix dactylifera	Canary Date Palm	19"	40'	20'	Good	N	10'	PROTECT	Street Tree
X	25	Phoenix dactylifera	Canary Date Palm	19"	40'	20'	Good	N	10'	PROTECT	Street Tree
X	26	Phoenix dactylifera	Canary Date Palm	20"	40'	20'	Good	N	10'	PROTECT	Street Tree
X	27	Phoenix dactylifera	Canary Date Palm	20"	40'	20'	Good	N	10'	PROTECT	Street Tree
X	28	Phoenix dactylifera	Canary Date Palm	18"	38'	20'	Good	N	10'	PROTECT	Street Tree
X	29	Phoenix dactylifera	Canary Date Palm	19"	40'	20'	Good	N	10'	PROTECT	Street Tree
X	29A	Ptychosperma elegans	Solitaire Palm	3"	20'	5'	Poor	N	10'	REMOVE	
X	29B	Ptychosperma elegans	Solitaire Palm	3"	20'	5'	Fair	N	10'	REMOVE	
X	29C	Ptychosperma elegans	Solitaire Palm	3"	20'	5'	Fair	N	10'	REMOVE	
X	30	Ptychosperma elegans	Solitaire Palm	3"	20'	5'	Fair	N	10'	REMOVE	
X	30A	Ptychosperma elegans	Solitaire Palm	3"	17'	5'	Fair	N	10'	REMOVE	
X	31	Ptychosperma elegans	Solitaire Palm	3"	20'	8'	Good	N	10'	REMOVE	

Existing Tree Schedule											
Symbol	ID	Botanical Name	Common Name	DBH	Height	Spread	Condition	Native	TPZ Radius	Status	Notes
X	31A	Ptychosperma elegans	Solitaire Palm	1"	14'	5'	Poor	N	10'	REMOVE	
X	32	Ptychosperma elegans	Solitaire Palm	3"	25'	5'	Fair	N	10'	REMOVE	
X	33	Ptychosperma elegans	Solitaire Palm	3", 3"	20'	10'	Fair	N	10'	REMOVE	Double
X	34	Ptychosperma elegans	Solitaire Palm	3", 3", 3"	20'	10'	Fair	N	10'	REMOVE	Triple
X	35	Ptychosperma elegans	Solitaire Palm	3"	25'	7'	Fair	N	10'	REMOVE	
X	36	Ptychosperma elegans	Solitaire Palm	3", 3"	25'	10'	Fair	N	10'	REMOVE	Double
X	37	Ptychosperma elegans	Solitaire Palm	3"	25'	7'	Fair	N	10'	REMOVE	
X	37A	Ptychosperma elegans	Solitaire Palm	3", 3"	25'	10'	Fair	N	10'	REMOVE	Double
X	38	Ptychosperma elegans	Solitaire Palm	3", 3"	22'	10'	Fair	N	10'	REMOVE	Double
X	39	Roystonea regia	Royal Palm	12"	30'	12'	Fair	Y	10'	REMOVE	
X	40	Roystonea regia	Royal Palm	15"	40'	18'	Good	Y	10'	REMOVE	
X	41	Quercus virginiana	Live oak	12"	30'	30'	Good	Y	15'	REMOVE	
X	42	Quercus virginiana	Live oak	8"	20'	12'	Poor	Y	10'	REMOVE	
X	42A	Quercus virginiana	Live oak	14"	20'	25'	Good	Y	12.5'	REMOVE	
X	43	Quercus virginiana	Live oak	15"	16'	0	Dead	Y	-	REMOVE	Dead Tree Remove
X	44	Ptychosperma elegans	Solitaire Palm	3", 3"	20'	10'	Fair	N	10'	REMOVE	Double
X	45	Ptychosperma elegans	Solitaire Palm	3", 3"	20'	12'	Fair	N	10'	REMOVE	Double
X	46	Ptychosperma elegans	Solitaire Palm	3"	20'	7'	Fair	N	10'	REMOVE	
X	47	Ptychosperma elegans	Solitaire Palm	3", 3"	20'	10'	Poor	N	10'	REMOVE	Double
X	48	Roystonea regia	Royal Palm	14"	40'	15'	Good	Y	10'	REMAIN	
X	49	Bulnesia arborea	Verawood	2"	12'	12'	Good	N	10'	REMOVE	
X	50	Ravensala madagascariensis	Travelers Palm	Cluster	35'	30'	Good	N	15'	REMOVE	OFF SITE
X	51	Quercus virginiana	Live oak	22"	35'	40'	Good	Y	20'	PROTECT	OFF SITE
X	52	Quercus virginiana	Live oak	23"	30'	40'	Good	Y	20'	PROTECT	OFF SITE
X	53	Quercus virginiana	Live oak	22"	20'	25'	Fair	Y	12.5'	PROTECT	OFF SITE
X	54	Roystonea regia	Royal Palm	16"	18'	-	Good	N	10'	REMOVE	Dead Tree Remove
X	55	Quercus virginiana	Live oak	20"	30'	35'	Good	Y	17.5'	PROTECT	OFF SITE
X	56	Quercus virginiana	Live oak	22"	20'	25'	Fair	Y	17.5'	PROTECT	OFF SITE
X	57	Bursera simaruba	Gumbo Limbo	22"	20'	25'	Fair	Y	12.5'	PROTECT	OFF SITE
X	58	Bursera simaruba	Gumbo Limbo	22"	20'	25'	Fair	Y	12.5'	PROTECT	OFF SITE
X	59	Veitchia arecina	Montgomery Palm	7"	25'	10'	Good	N	10'	REMOVE	OFF SITE
X	60	Veitchia arecina	Montgomery Palm	7"	25'	10'	Good	N	10'	REMOVE	OFF SITE
X	61	Veitchia arecina	Montgomery Palm	7"	25'	10'	Good	N	10'	REMOVE	OFF SITE
X	62	Lantania	Latan Palm	7"	25'	10'	Good	N	10'	REMOVE	OFF SITE

TREE/PALM PROTECTION FENCES SHALL BE CONSTRUCTED PRIOR TO ANY CONSTRUCTION ACTIVITY INCLUDING GRUBBING FOR ALL TREES/PALMS THAT ARE TO REMAIN, BE PROTECTED OR BE RELOCATED' NO ACTIVITY OR DISTURBANCE SHOULD OCCUR WITHIN THE FENCED AREAS, INCLUDING VEHICLE USE, STORAGE OF MATERIALS, DUMPING OF LIQUIDS OR MATERIALS, GRADE CHANGES, GRUBBING, AND MECHANICAL TRENCHING FOR IRRIGATION, ELECTRICAL, LIGHTING, ETC.

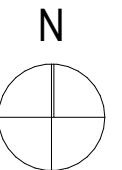


IN NO CASE SHALL THE FENCE BE INSTALLED LESS THAN TEN FEET FROM THE TRUNK

TREE+PALM PROTECTION BARRIERS TO EXTEND BEYOND THE 'DRIPLINE' OR THE 'CRITICAL ROOT ZONE AREA' OF ALL TREES/PALMS TO BE PROTECTED. EXTEND WHERE NECESSARY TO PROTECT TREE CANOPY ROOTS

BARRIERS SHALL BE A MINIMUM OF FOUR FEET HIGH, AND SHALL BE CONSTRUCTED OF CONTINUOUS CHAIN LINK FENCE WITH METAL POSTS AT EIGHT-FOOT SPACING OR 2\"X4\" POSTS WITH THREE EQUALLY SPACED 2\"X4\" RAILS. POSTS MAY BE SHIFTED TO AVOID ROOTS

PROTECTION DETAIL NOTE:
CONTRACTOR TO INSTALL 'TREE/PALM PROTECTION FENCE BARRIERS' AROUND ALL EXISTING TREES OR PALMS AT THE START OF THE PROJECT. BARRIERS TO REMAIN IN PLACE THROUGHOUT THE DURATION OF THE PROJECT AND SHOULD NOT BE REMOVED OR DROPPED FOR ANY REASON WITHOUT AUTHORIZATION FROM THE CITY OF MIAMI BEACH URBAN FORESTRY + PLANNING + ZONING DEPARTMENT
2. REFER TO ARBORIST REPORT (UPLOADED AS SEPARATE DOCUMENT)



TREE DISPOSITION SCHEDULE
Scale: 1" = 30'-0"

1100 5th Street

No copies, transmissions, reproductions, or electronic revisions of any portions of these drawings in whole or in part be made without the express written permission of Zyscovich, LLC. All designs indicated in these drawings are property of Zyscovich, LLC. All copyrights reserved © 2023.



URBAN ROBOT ASSOCIATES

Souto Moura Arquitectos S.A.

ZYSCOVICH

Miami Beach, Florida

Zoning Data

100 N Biscayne Blvd . 27th Fl
Miami . FL 33132.2304
t 305.372.5222 f 305.577.4521

April 7, 2024

e info@zyscovich.com
w www.zyscovich.com

L003

CITY OF MIAMI BEACH

LANDSCAPE LEGEND

INFORMATION REQUIRED TO BE PERMANENTLY AFFIXED TO PLANS

Zoning District CPS-2 Lot Area 32,650 Acres 0.75

OG = ON GROUND
OS = ON STRUCTURE

OPEN SPACE

- A. Square feet of required Open Space as indicated on site plan:
Lot Area = _____ s.f. x _____ % = _____ s.f.
- B. Square feet of parking lot open space required as indicated on site plan:
Number of parking spaces _____ x 10 s.f. parking space = _____
- C. Total square feet of landscaped open space required: A+B= _____

REQUIRED/ ALLOWED	PROVIDED
N/A	
N/A	
N/A	

LAWN AREA CALCULATION

- A. Square feet of landscaped open space required _____
- B. Maximum lawn area (sod) permitted= 20 % x 32,650 s.f. _____

N/A	
6,530	0

TREES

- A. Number of trees required per lot or net lot acre, less existing number of trees meeting minimum requirements=
22 trees x 0.75 net lot acres - number of existing trees= _____
- B. % Natives required: Number of trees provided x 30% = _____
- C. % Low maintenance / drought and salt tolerant required:
Number of trees provided x 50%= _____
- D. Street Trees (maximum average spacing of 20' o.c.)
640 linear feet along street divided by 20'= _____
- E. Street tree species allowed directly beneath power lines:
(maximum average spacing of 20' o.c.):
80 linear feet along street divided by 20'= _____

		OG	OS
	17	2	33
	6	32	30
	9	32	30
	30		-7
	4		+1
TOTAL 34	TOTAL 28		-6 SHORTFALL

SHRUBS

- A. Number of shrubs required: Sum of lot and street trees required x 12= _____
- B. % Native shrubs required: Number of shrubs provided x 50%= _____

		OG	OS
	588	141	479
	294	84	212

LARGE SHRUBS OR SMALL TREES

- A. Number of large shrubs or small trees required: Number of required shrubs x 10%= _____
- B. % Native large shrubs or small trees required: Number of large shrubs or small trees provided x 50%= _____

		OG	OS
	59	24	37
	30	24	37

NOTES:

1. STREET TREES WILL COMPLY WITH FLORIDA FANCY REQUIREMENTS. ALL OTHER PLANTING MATERIALS SHALL MEET OR EXCEED FLORIDA GRADE # 1 AS SPECIFIED IN GRADES AND STANDARDS FOR NURSERY PLANTS AND PART II, PALMS AND TREES, CURRENT EDITION.

TOTAL TREES AND PALMS TO BE REMOVED

TREES

7 Quercus virginiana
1 Tabebuia bahamensis
1 Bulnesia arborea
TOTAL 88" DBH

REQUIRED TREE MITIGATION

30 SMALL TREES (2" DBH x 6' SPREAD x 12' HEIGHT) OR,
15 LARGE TREES (4" DBH x 8' SPREAD x 16' HEIGHT) OR,
\$30,000 CONTRIBUTION TO TREE TRUST FUND

PALMS

4 Veitchia arecina
15 Roystonea regia (1 Dead)
19 Ptychosperma elegans
1 Ravenala madagascariensis (Cluster)

Sec. 46-61. (c) The removal of a palm shall be replaced with one canopy tree at 12 feet overall height with a two-inch DBH.

TOTAL 37 PALMS

REQUIRED PALM MITIGATION

37 SMALL TREES (2" DBH x 12' HEIGHT) OR,
19 LARGE TREES (4" DBH x 16' HEIGHT) OR,
\$37,000 CONTRIBUTION TO TREE TRUST FUND

PROPOSED TREES - SEE PLANTING PLANS

SMALL TREES: 38
26 Myrcianthes fragrans*
12 Conocarpus erectus 'sericeus'

LARGE TREES: 16
13 Calophyllum brasiliense
3 Bursera simaruba*

ON STRUCTURE: 34
30 Conocarpus erectus 'sericeus'*
4 Olea europaea

ON STRUCTURE: 4
3 Ligustrum japonicum
1 Olea Europaea

TOTAL SMALL TREES: 72
TOTAL LARGE TREES: 20

* Native trees

REQUIRED MITIGATION

67 SMALL TREES

TOTAL PROPOSED

72 SMALL TREES + 20 LARGE TREES
(112 SMALL TREES EQUIVALENT)

EXCEEDING BY 45 SMALL TREES OR 22 LARGE TREES EQUIVALENT



LANDSCAPE LEGEND

Scale: 1" = 30'-0"

1100 5th Street

Miami Beach, Florida

Zoning Data

April 7, 2024

No copies, transmissions, reproductions, or electronic revisions of any portions of these drawings in whole or in part be made without the express written permission of Zyscovich, LLC. All designs indicated in these drawings are property of Zyscovich, LLC. All copyrights reserved © 2023.



URBAN ROBOT ASSOCIATES

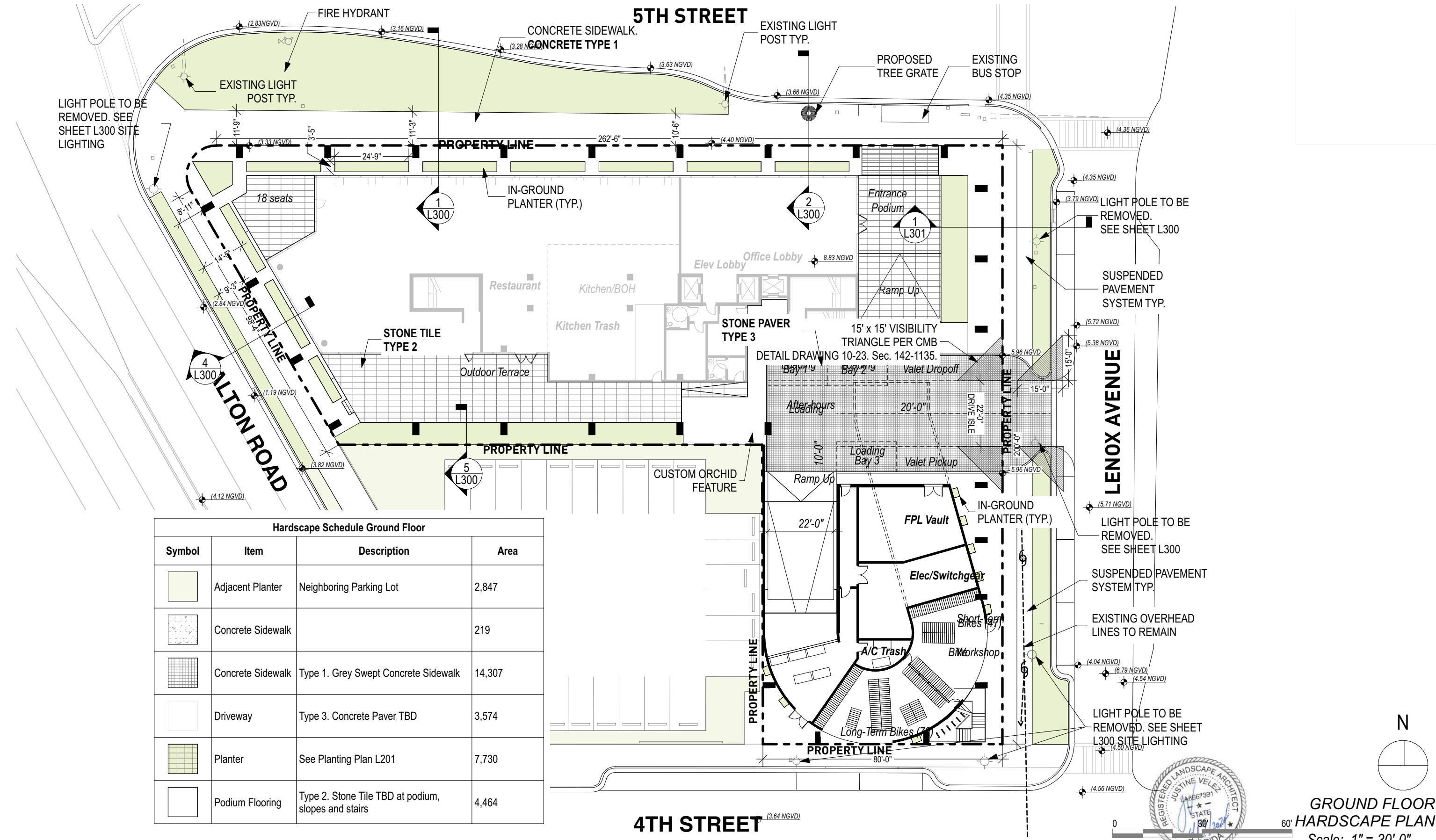
Souto Moura Arquitectos S.A.

ZYSCOVICH

100 N Biscayne Blvd. 27th Fl
Miami, FL 33132.2304
t 305.372.5222 f 305.577.4521

e info@zyscovich.com
w www.zyscovich.com

L004



Hardscape Schedule Ground Floor			
Symbol	Item	Description	Area
[Green Box]	Adjacent Planter	Neighboring Parking Lot	2,847
[Dotted Box]	Concrete Sidewalk		219
[Grid Box]	Concrete Sidewalk	Type 1. Grey Swept Concrete Sidewalk	14,307
[White Box]	Driveway	Type 3. Concrete Paver TBD	3,574
[Green Grid Box]	Planter	See Planting Plan L201	7,730
[White Box]	Podium Flooring	Type 2. Stone Tile TBD at podium, slopes and stairs	4,464



GROUND FLOOR
HARDSCAPE PLAN
Scale: 1" = 30'-0"

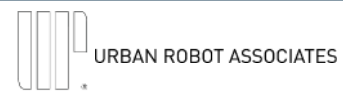
1100 5th Street

Miami Beach, Florida

Zoning Data

April 7, 2024

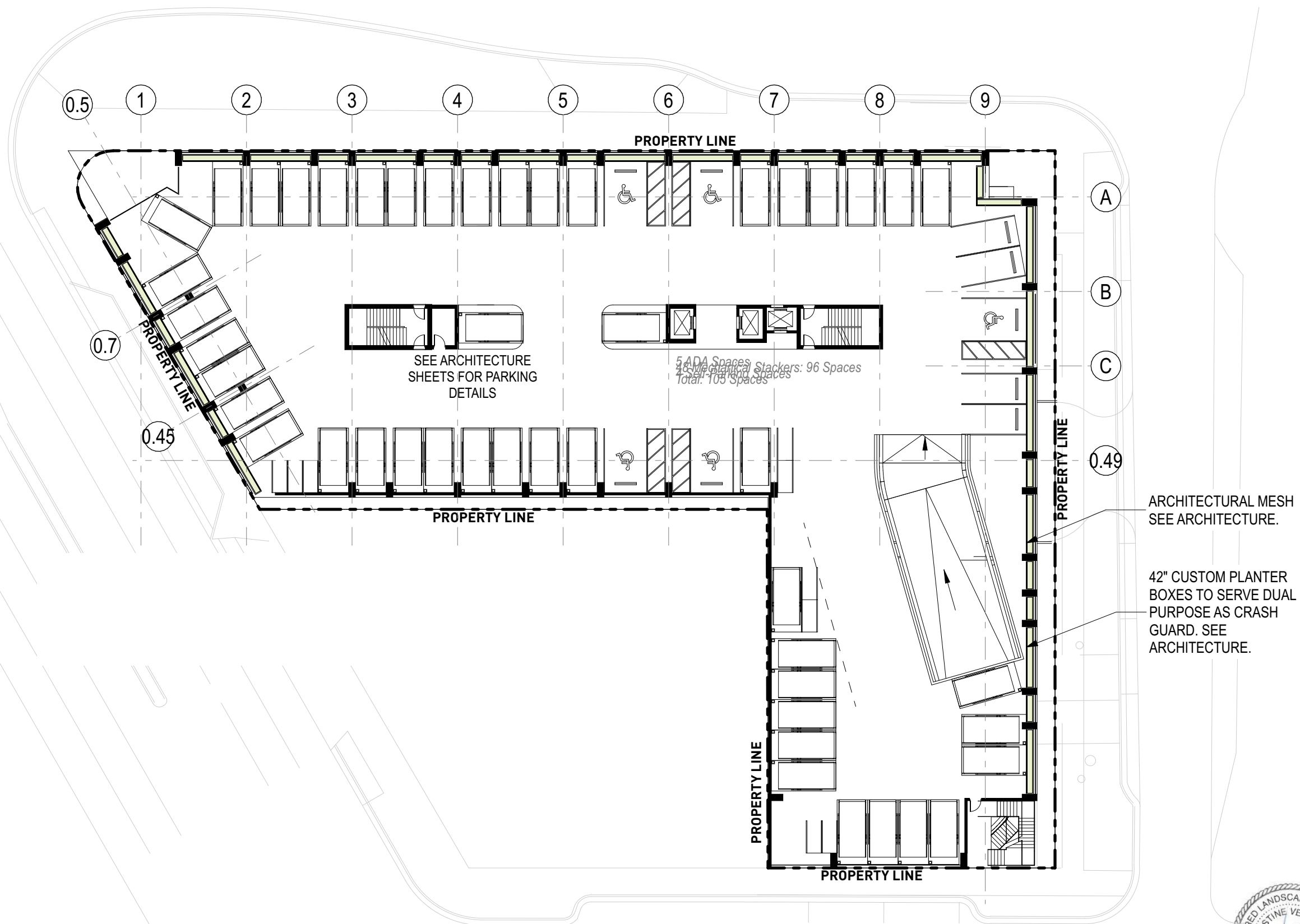
No copies, transmissions, reproductions, or electronic revisions of any portions of these drawings in whole or in part be made without the express written permission of Zyscovich, LLC. All designs indicated in these drawings are property of Zyscovich, LLC. All copyrights reserved © 2023.



Souto Moura Arquitectos S.A. ZYSCOVICH

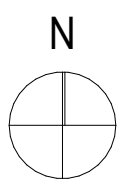
100 N Biscayne Blvd. 27th Fl
Miami, FL 33132.2304
t 305.372.5222 f 305.577.4521

e info@zyscovich.com L101
w www.zyscovich.com



ARCHITECTURAL MESH
SEE ARCHITECTURE.

42" CUSTOM PLANTER
BOXES TO SERVE DUAL
PURPOSE AS CRASH
GUARD. SEE
ARCHITECTURE.



**SECOND FLOOR
HARDSCAPE PLAN**
Scale: 1" = 30'-0"

1100 5th Street

Miami Beach, Florida

Zoning Data

April 7, 2024

No copies, transmissions, reproductions, or electronic revisions of any portions of these drawings in whole or in part be made without the express written permission of Zyscovich, LLC. All designs indicated in these drawings are property of Zyscovich, LLC. All copyrights reserved © 2023.



URBAN ROBOT ASSOCIATES

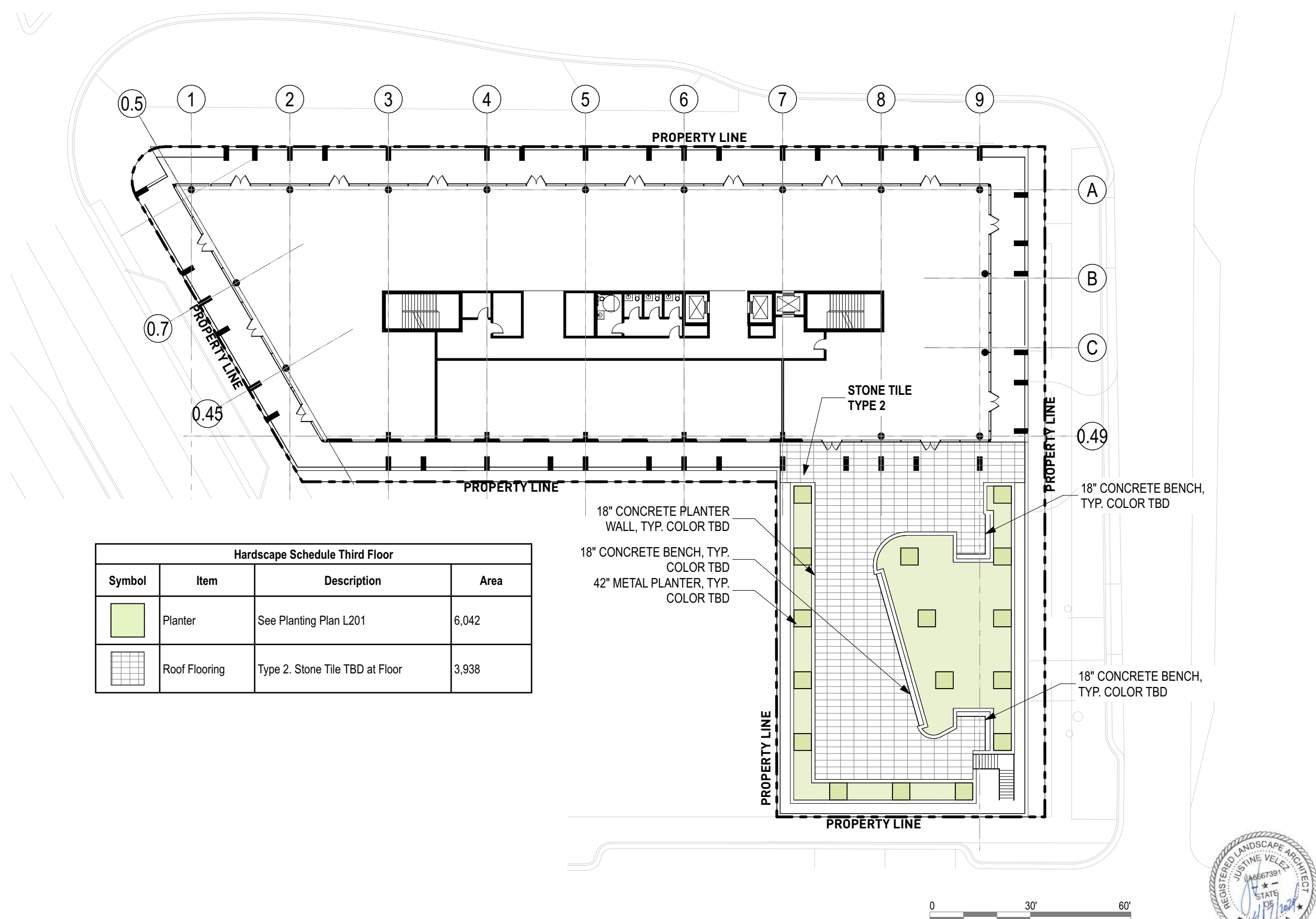
Souto Moura Arquitectos S.A.

ZYSCOVICH

100 N Biscayne Blvd. 27th Fl
Miami, FL 33132.2304
t 305.372.5222 f 305.577.4521

e info@zyscovich.com
w www.zyscovich.com

L202

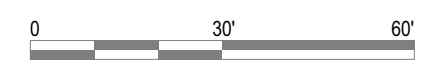


Hardscape Schedule Third Floor			
Symbol	Item	Description	Area
	Planter	See Planting Plan L201	6,042
	Roof Flooring	Type 2. Stone Tile TBD at Floor	3,938

18" CONCRETE PLANTER WALL, TYP. COLOR TBD
 18" CONCRETE BENCH, TYP. COLOR TBD
 42" METAL PLANTER, TYP. COLOR TBD

18" CONCRETE BENCH, TYP. COLOR TBD

18" CONCRETE BENCH, TYP. COLOR TBD



**THIRD FLOOR
 HARDSCAPE PLAN**
 Scale: 1" = 30'-0"

1100 5th Street

Miami Beach, Florida

Zoning Data

April 7, 2024

No copies, transmissions, reproductions, or electronic revisions of any portions of these drawings in whole or in part be made without the express written permission of Zyscovich, LLC. All designs indicated in these drawings are property of Zyscovich, LLC. All copyrights reserved © 2023.



URBAN ROBOT ASSOCIATES

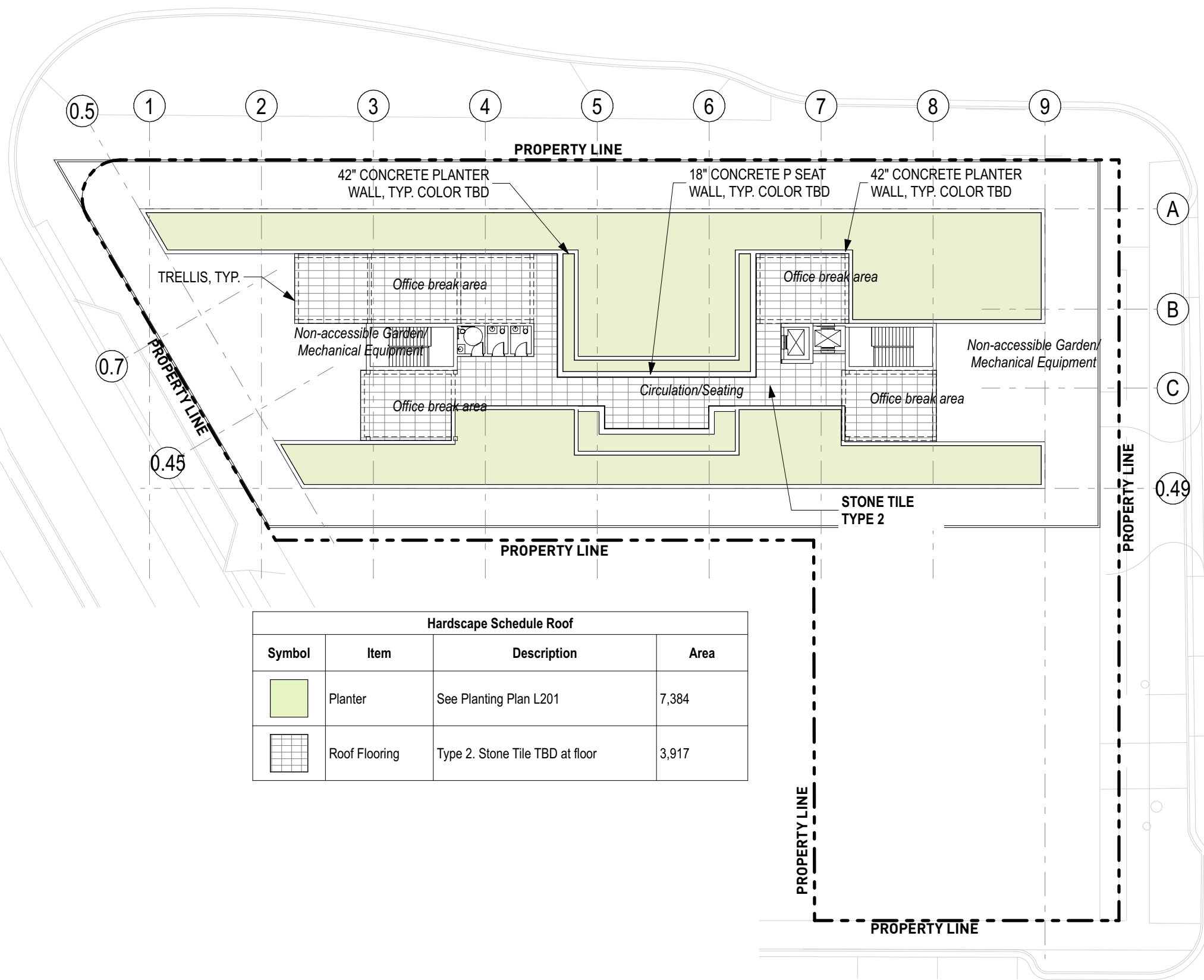
Souto Moura Arquitectos S.A.

ZYSCOVICH

100 N Biscayne Blvd. 27th Fl
 Miami, FL 33132.2304
 t 305.372.5222 f 305.577.4521

e info@zyscovich.com
 w www.zyscovich.com

L103



Hardscape Schedule Roof			
Symbol	Item	Description	Area
	Planter	See Planting Plan L201	7,384
	Roof Flooring	Type 2. Stone Tile TBD at floor	3,917



ROOF HARDSCAPE PLAN
 Scale: 1" = 30'-0"

1100 5th Street

Miami Beach, Florida

Zoning Data

April 7, 2024

No copies, transmissions, reproductions, or electronic revisions of any portions of these drawings in whole or in part be made without the express written permission of Zyscovich, LLC. All designs indicated in these drawings are property of Zyscovich, LLC. All copyrights reserved © 2023.



URBAN ROBOT ASSOCIATES

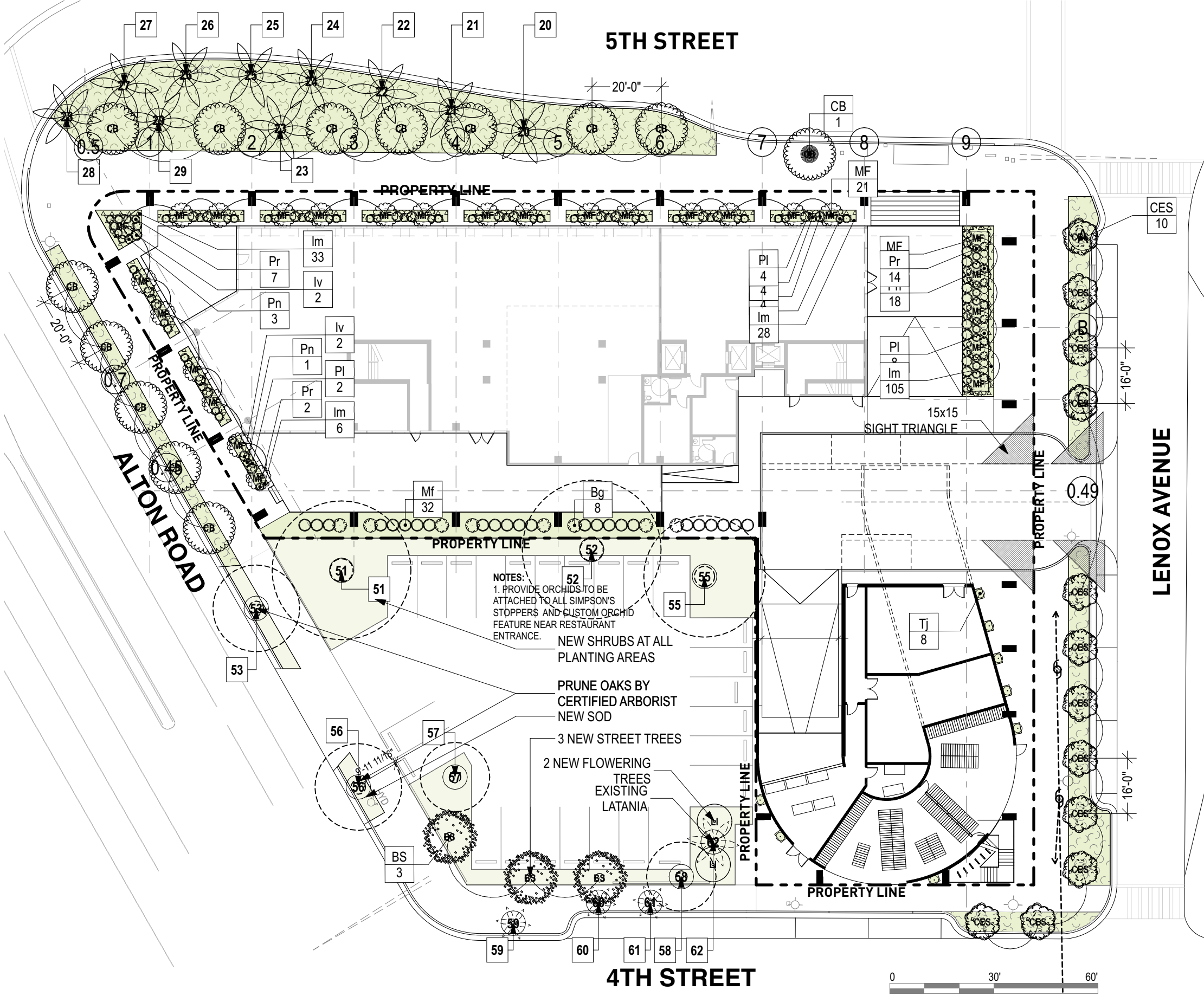
Souto Moura Arquitectos S.A.

ZYSCOVICH

100 N Biscayne Blvd. 27th Fl
 Miami, FL 33132.2304
 t 305.372.5222 f 305.577.4521

e info@zyscovich.com
 w www.zyscovich.com

L104



NOTES:
 1. PROVIDE ORCHIDS TO BE ATTACHED TO ALL SIMPSON'S STOPPERS AND CUSTOM ORCHID FEATURE NEAR RESTAURANT ENTRANCE.
 NEW SHRUBS AT ALL PLANTING AREAS
 PRUNE OAKS BY CERTIFIED ARBORIST
 NEW SOD
 3 NEW STREET TREES
 2 NEW FLOWERING TREES EXISTING LATANIA

Tree Schedule									
Symbol	ID	Qty	Botanical Name	Common Name	Cal	Height	Spread	Native	Remarks
	BS	3	Bursera simaruba	Gumbo Limbo	4"	16' min	15'	Y	Florida Fancy, Single Leader, 4.5' CT - Adjacent parking lot Street Trees
	CB	13	Calopyllum brasiliense	Brazilian Beautyleaf	4"	16' min	15'	Y	Florida Fancy, Single Leader, 4.5' CT - Street Trees
	CES	12	Conocarpus erectus 'serica'	Silver Buttonwood	4"	14' min	10'	Y	Florida Fancy, Single Leader, 4' CT - Street Trees
	LI	2	Lagerstroemia indica	Crape Myrtle	4"	14' min	10'	Y	Florida Fancy, Single Leader, 4' CT - Adjacent parking lot
	MF	26	Myrcianthes fragrans	Simpson's Stopper	Multi Trunk	14'	10'	Y	Florida Fancy, Multi Trunk, 5-7 trunks 1.5" each, 4.5' CT - Lot Trees

Shrub Schedule									
Symbol	ID	Qty	Botanical Name	Common Name	Size	Height	Spread	Native	Remarks
	Bg	8	Bougainvillea 'San Diego Red'	Red Bougainvillea	15g	48"	24"	N	Trellised, Florida Fancy, Shrub
	Iv	29	Ilex vomitoria 'Nana'	Holly	7g	18"	30"	Y	Florida Fancy, Full, Lush, Shrub
	Mf	24	Myrcianthes fragrans	Simpson Stopper	25 gal	7"	4"	Y	Florida Fancy, Bush, Full to Bottom, Large Shrub
	PI	28	Pentas lanceolata 'Ruby Red'	Egyptian Star Cluster	3 gal	18"	18"	N	Florida Fancy, Full, Lush, Shrub
	Pn	31	Psychotria nervosa 'little psycho'	Wild Coffee	3 gal	36"	24"	Y	Florida Fancy, Full, Lush, Shrub
	Pr	57	Stachytarpheta 'Red Compacta'	Porterweed 'red'	3 gal	36"	24"	N	Florida Fancy, Full, Lush, Shrub
	Tj	8	Trachelospermum jasminoides	Confederate Jasmine	25 gal	12"	30"	N	Florida Fancy, Trellis

Groundcover Schedule										
Symbol	QTY	ID	Botanical Name	Common Name	Size	Height	Spread	Spacing (Inches)	Native	Remarks
	418	Im	Liriope muscari	Liriope	1g	12"	12"	12	N	
	6,200	ag	Arachis glabrata	Perennial Peanut	1g	12"	12"	12	N	



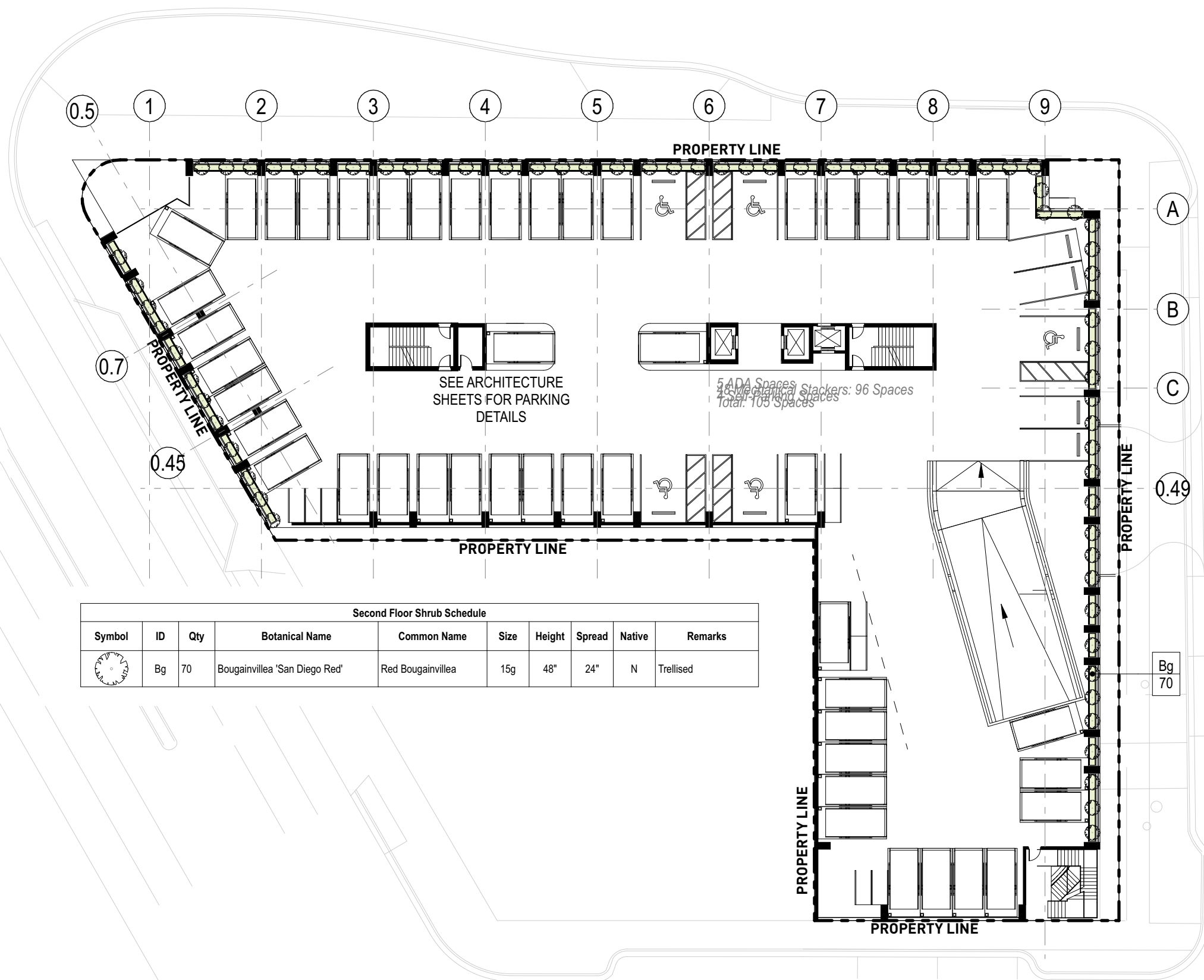
GROUND FLOOR PLANTING PLAN
 Scale: 1" = 30'-0"

No copies, transmissions, reproductions, or electronic revisions of any portions of these drawings in whole or in part be made without the express written permission of Zyscovich, LLC. All designs indicated in these drawings are property of Zyscovich, LLC. All copyrights reserved © 2023.



100 N Biscayne Blvd. 27th Fl
 Miami, FL 33132.2304
 t 305.372.5222 f 305.577.4521

e info@zyscovich.com L201
 w www.zyscovich.com



Second Floor Shrub Schedule

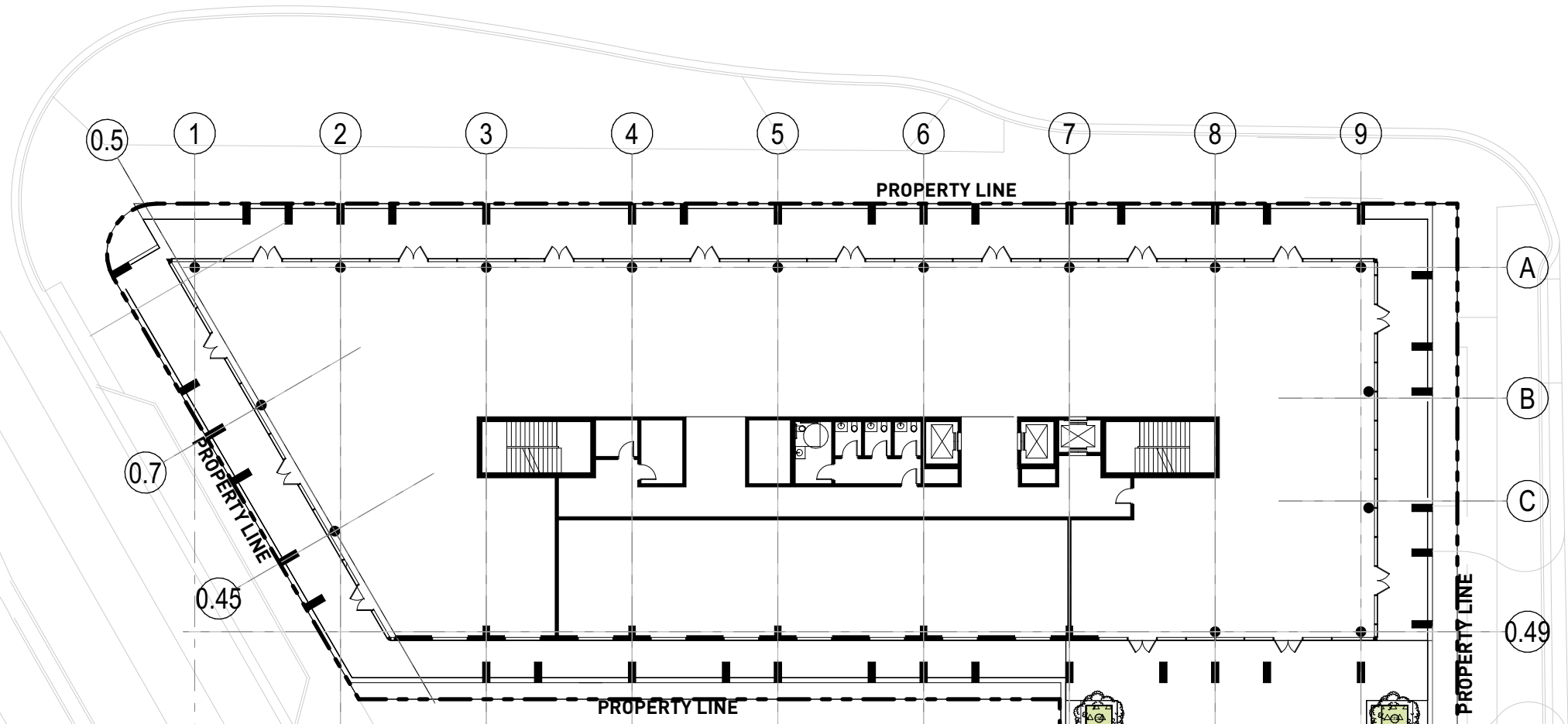
Symbol	ID	Qty	Botanical Name	Common Name	Size	Height	Spread	Native	Remarks
	Bg	70	Bougainvillea 'San Diego Red'	Red Bougainvillea	15g	48"	24"	N	Trellised



N

**SECOND FLOOR
 LANDSCAPE PLAN**
 Scale: 1" = 30'-0"

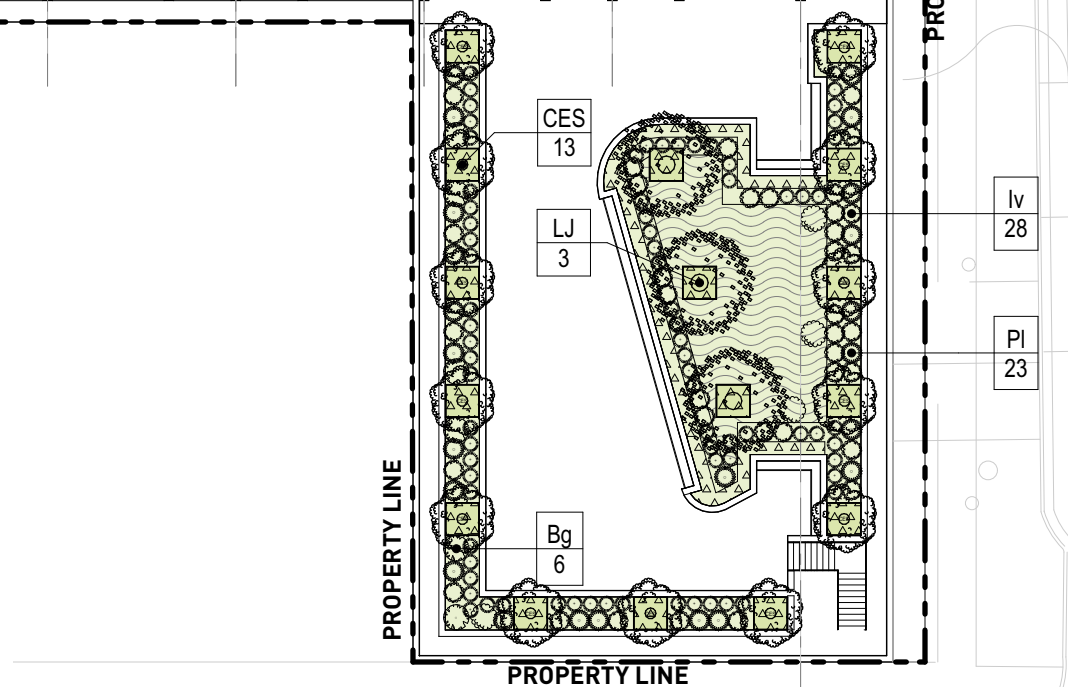
No copies, transmissions, reproductions, or electronic revisions of any portions of these drawings in whole or in part be made without the express written permission of Zyscovich, LLC. All designs indicated in these drawings are property of Zyscovich, LLC. All copyrights reserved © 2023.



Third Floor Tree Schedule									
Symbol	ID	Qty	Botanical Name	Common Name	Cal	Height	Spread	Native	Remarks
	CES	13	Conocarpus erectus 'serica'	Silver Buttonwood	6"	12'	10'	Y	Field-grown collected material
	LJ	3	Ligustrum japonicum	Wax Privet	6" min	16'	16'	N	Field-grown collected material

Third Floor Shrub Schedule									
Symbol	ID	Qty	Botanical Name	Common Name	Size	Height	Spread	Native	Remarks
	Bg	6	Bougainvillea 'San Diego Red'	Red Bougainvillea	15g	48"	24"	N	Florida Fancy. Trellised
	Iv	36	Ilex vomitoria 'Nana'	Holly	7g	18"	30"	Y	Florida Fancy. Full, Lush. Shrub
	PI	23	Psychotria ligustrifolia	Bahama Wild Coffee	3g	18"	18"	Y	Florida Fancy. Full, Lush. Shrub
	Pr	77	Stachytarpheta 'Red Compacta'	Porterweed 'red'	3 gal	36"	24"	N	Florida Fancy. Shrub
	Sb	4	Savia bahamensis	Maiden Bush	10g	6'	4'	Y	Florida Fancy. Full, Lush. Large Shrub

Third Floor Groundcover Schedule											
Symbol	ID	QTY	Botanical Name	Common Name	Size	Height	Spread	Spacing (Inches)	Native	Area (sf)	Remarks
	Im	161	Liriope muscari	Liriope	1g	12"	12"	12	N	667	
	zp	216	Zamia pumila	Coontie	7g	24"	24"	18	Y	814	



**THIRD FLOOR
PLANTING PLAN**
Scale: 1" = 30'-0"

1100 5th Street

Miami Beach, Florida

Zoning Data

April 7, 2024

No copies, transmissions, reproductions, or electronic revisions of any portions of these drawings in whole or in part be made without the express written permission of Zyscovich, LLC. All designs indicated in these drawings are property of Zyscovich, LLC. All copyrights reserved © 2023.



URBAN ROBOT ASSOCIATES

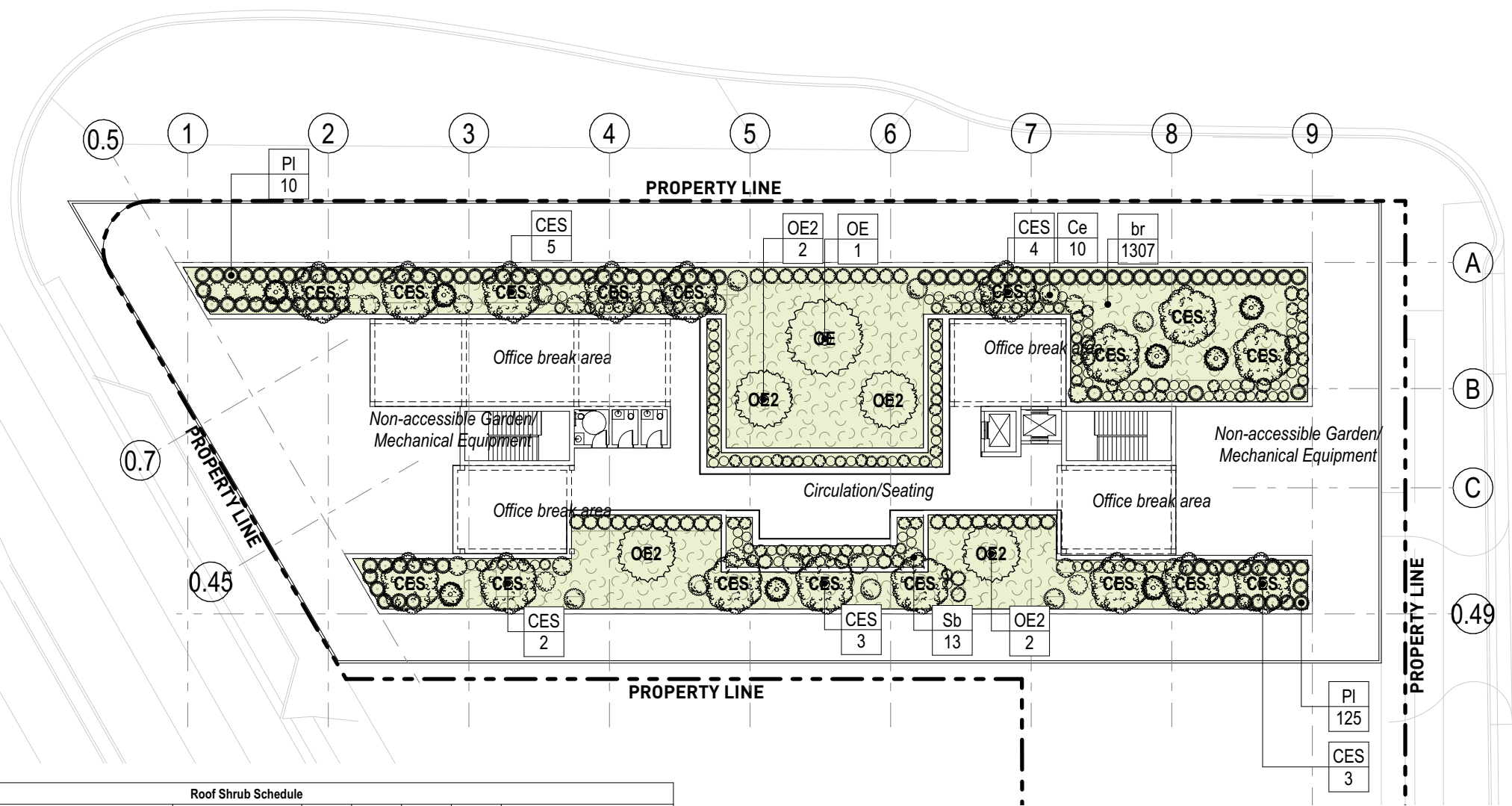
Souto Moura Arquitectos S.A.

ZYSCOVICH

100 N Biscayne Blvd. 27th Fl
Miami, FL 33132.2304
t 305.372.5222 f 305.577.4521

e info@zyscovich.com
w www.zyscovich.com

L203



Roof Shrub Schedule									
Symbol	ID	Qty	Botanical Name	Common Name	Size	Height	Spread	Native	Remarks
⊗	Bg	11	Bougainvillea 'San Diego Red'	Red Bougainvillea	15g	48"	24"	N	Trellised
⊗	Ce	16	Calliandra emarginata	Pink Dwarf Powderpuff	10g	4'	4'	Y	Full, Lush
⊙	Iv	47	Ilex vomitoria 'Nana'	Holly	7g	18"	30"	Y	Florida Fancy. Full, Lush
○	PI	100	Pentas lanceolata 'Ruby Red'	Egyptian Star Cluster	3g	18"	18"	N	Florida Fancy. Full, Lush
⊙	PI	106	Psychotria ligustrifolia	Bahama Wild Coffee	3g	18"	18"	Y	Full, Lush
⊗	Pn	47	Psychotria nervosa 'little psycho'	Wild Coffee	3g	36"	24"	Y	Florida Fancy. Full, Lush
○	Pr	41	Stachytarpheta 'Red Compacta'	Porterweed 'red'	3g	36"	24"	N	Florida Fancy. Full, Lush
⊙	Sb	9	Savia bahamensis	Maiden Bush	10g	4'	4'	Y	Full, Lush
⊗	Sm	8	Suriana maritima	Bay Cedar	25g	4'	5'	Y	Full, Lush

Roof Tree Schedule									
Symbol	ID	Qty	Botanical Name	Common Name	Cal	Height	Spread	Native	Remarks
⊗	CES	17	Conocarpus erectus 'serica'	Silver Buttonwood	16"	16' min	20'	Y	Field-grown collected material
○	OE	1	Olea europaea	Olive Tree	36" min	16' min	15'	N	Collected Specimen; Low Branching
⊗	OE2	4	Olea europaea	Olive Tree	4" min	12' min	12'	N	Low Branching

Roof Groundcover Schedule											
Symbol	ID	QTY	Botanical Name	Common Name	Size	Height	Spread	Spacing (Inches)	Native	Area (sf)	Remarks
⊗	br	1,307	Barleria repens	Coral Creeper	3g	24"	24"	12	N	4,626	



ROOF PLANTING PLAN
Scale: 1" = 30'-0"

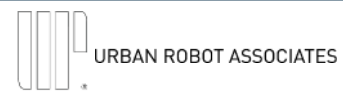
1100 5th Street

Miami Beach, Florida

Zoning Data

April 7, 2024

No copies, transmissions, reproductions, or electronic revisions of any portions of these drawings in whole or in part be made without the express written permission of Zyscovich, LLC. All designs indicated in these drawings are property of Zyscovich, LLC. All copyrights reserved © 2023.



Souto Moura Arquitectos S.A.

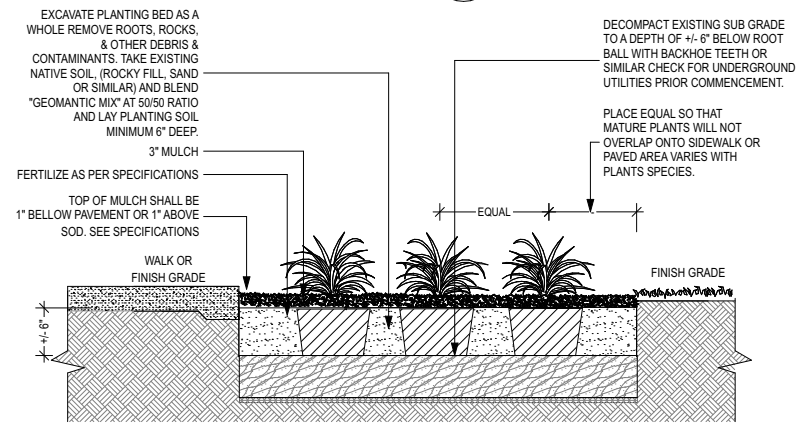
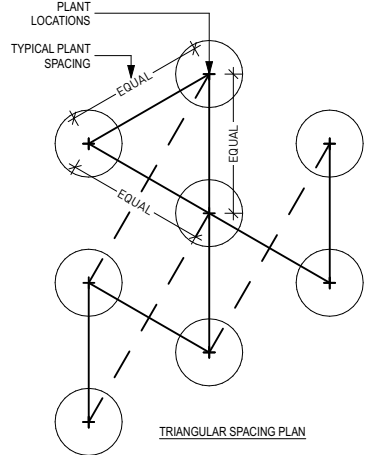
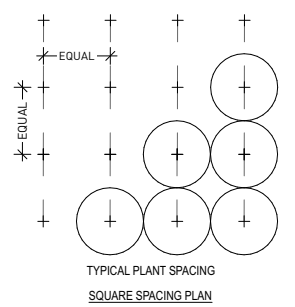
ZYSCOVICH

100 N Biscayne Blvd. 27th Fl
Miami, FL 33132.2304
t 305.372.5222 f 305.577.4521

e info@zyscovich.com
w www.zyscovich.com

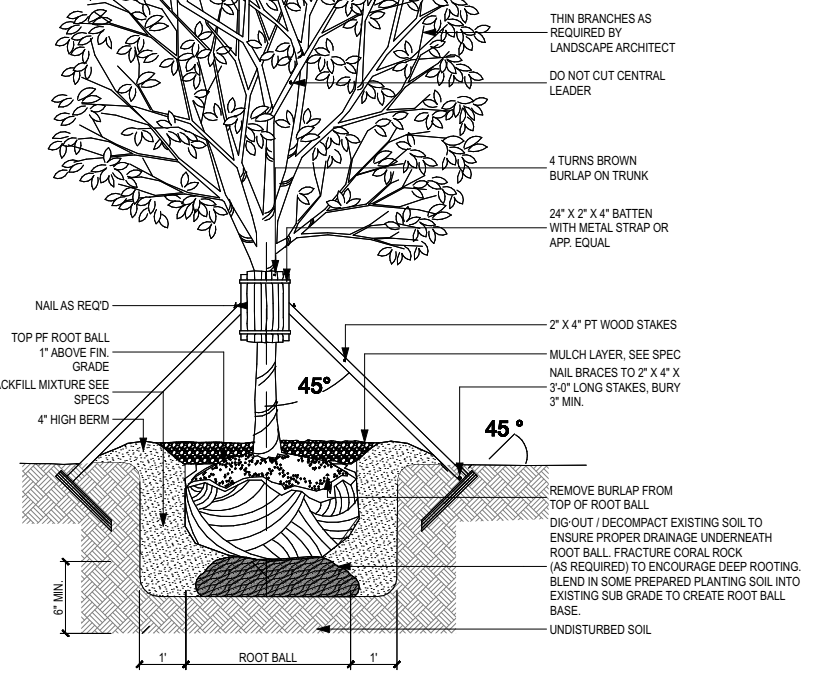
L204

NOTE:
IN MOST CASES TRIANGULAR SPACING IS PREFERRED.
USESQUARE SPACING ONLY IN SMALL AREAS.



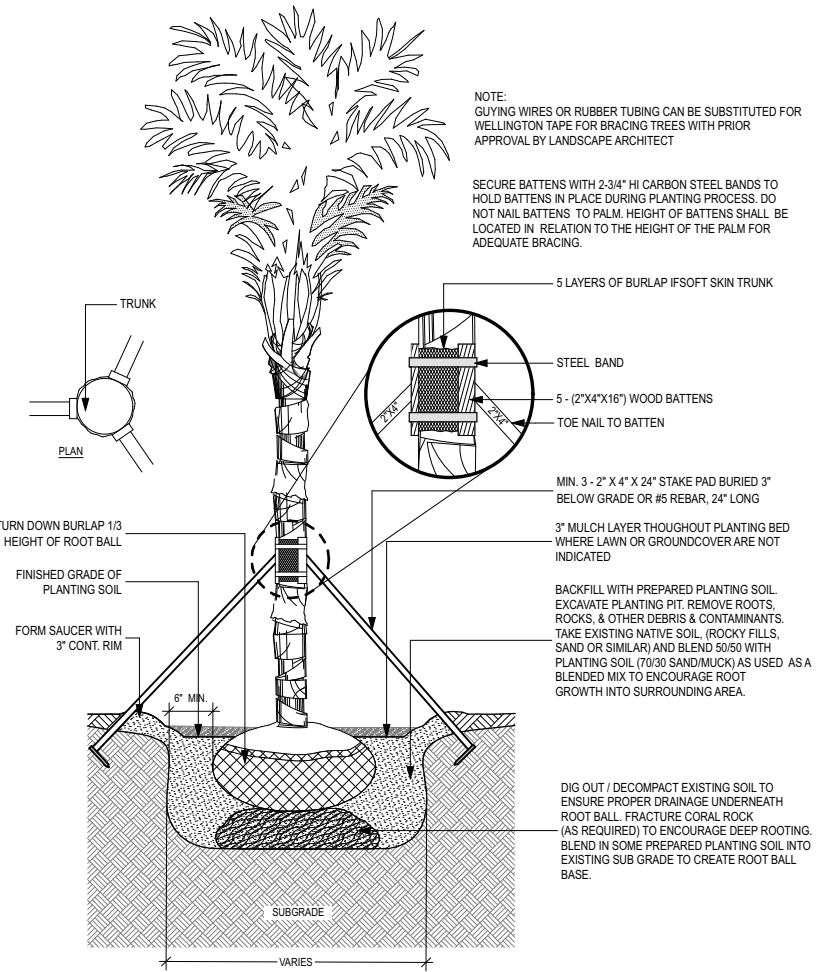
4
L205
GROUND COVER DETAIL
NOT TO SCALE

NOTES:
MIN. ROOT SPREAD TO BE IN ACCORDANCE WITH "AMERICAN STANDARDS FOR NURSERY STOCK". PRUNE ALL DAMAGED, DISEASED, OR WEAK LIMBS AND ROOTS. CLEANLY PRUNE ALL DAMAGED ROOT ENDS. DO NOT ALLOW ROOTS TO DRY OUT DURING INSTALLATION. SOAK ROOTS IN WATER OVERNIGHT BEFORE PLANTING.



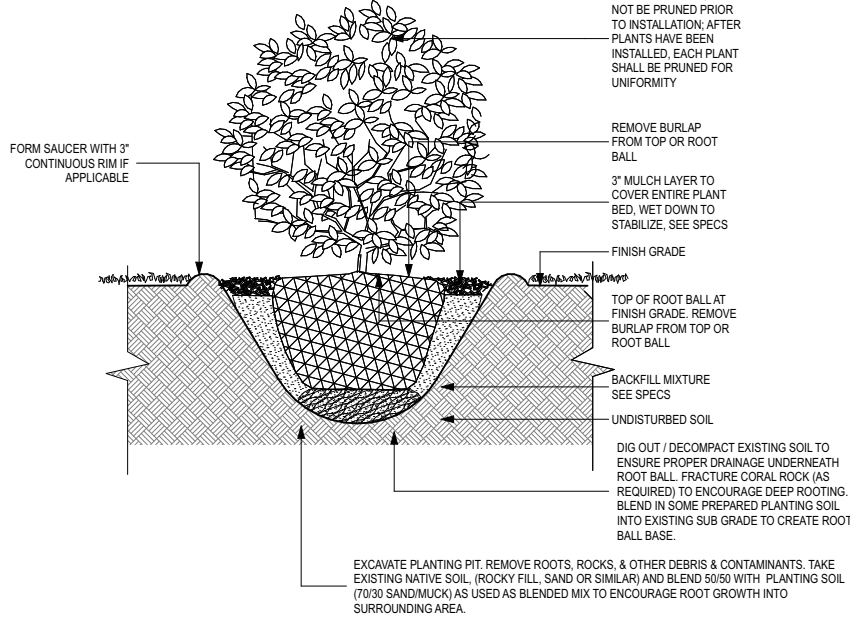
2
L205
TREE STAKING DETAIL
NOT TO SCALE

NOTE:
GUYING WIRES OR RUBBER TUBING CAN BE SUBSTITUTED FOR WELLINGTON TAPE FOR BRACING TREES WITH PRIOR APPROVAL BY LANDSCAPE ARCHITECT

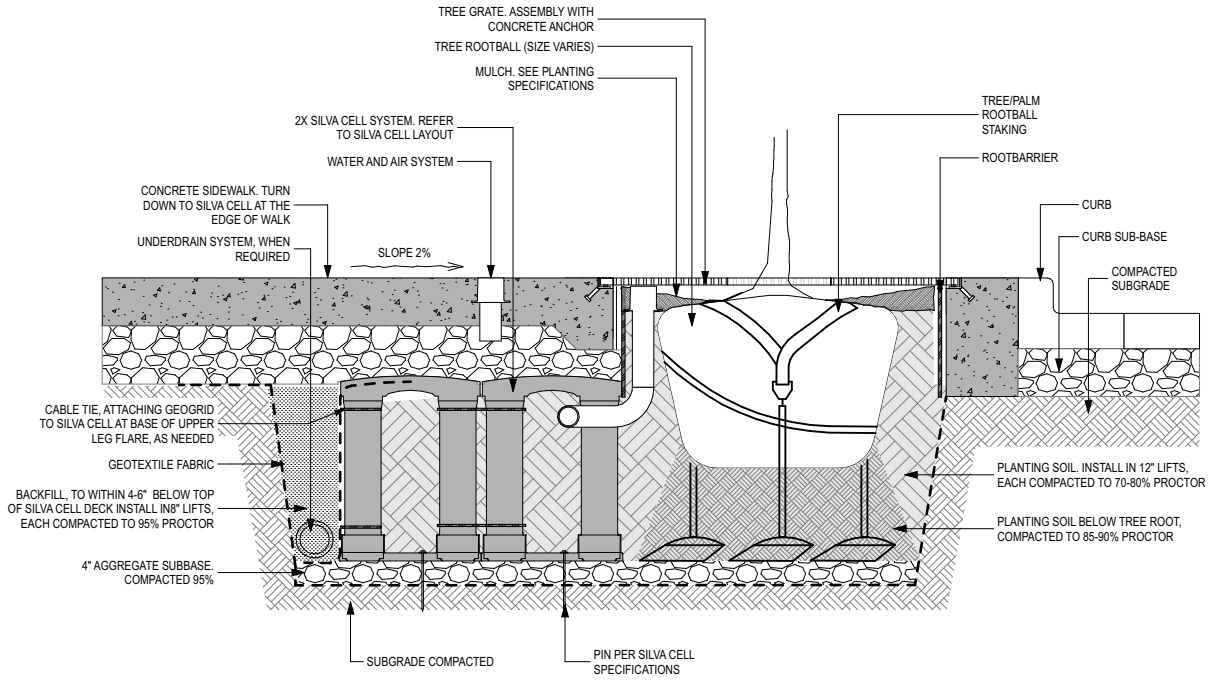


1
L205
PALM PLANTING DETAIL
NOT TO SCALE

NOTES:
MIN. ROOT SPREAD TO BE IN ACCORDANCE WITH "AMERICAN STANDARDS FOR NURSERY STOCK". PRUNE ALL DAMAGED, DISEASED, OR WEAK LIMBS AND ROOTS. CLEANLY PRUNE ALL DAMAGED ROOT ENDS. DO NOT ALLOW ROOTS TO DRY OUT DURING INSTALLATION. SOAK ROOTS IN WATER OVERNIGHT BEFORE PLANTING.



3
L205
SHRUB PLANTING DETAIL
NOT TO SCALE



5
L205
SUSPENDED PAVEMENT DETAIL
NOT TO SCALE



PLANTING NOTES AND DETAILS
Scale: 1" = 30'-0"

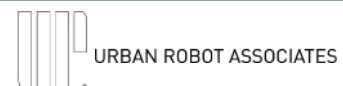
1100 5th Street

Miami Beach, Florida

Zoning Data

April 7, 2024

No copies, transmissions, reproductions, or electronic revisions of any portions of these drawings in whole or in part be made without the express written permission of Zyscovich, LLC. All designs indicated in these drawings are property of Zyscovich, LLC. All copyrights reserved © 2023.



Souto Moura Arquitectos S.A.



100 N Biscayne Blvd. 27th Fl
Miami, FL 33132.2304
t 305.372.5222 f 305.577.4521

e info@zyscovich.com
w www.zyscovich.com

L205



Brazilian Beautyleaf
Calophyllum brasiliense CB

Silver Buttonwood
Conocarpus erectus 'Sericeus' CES

Simpson's Stopper
Myrcianthes fragrans MF

Phoenix dactylifera
Date Palm PD

Gumbo limbo
Bursera simaruba BS

Crape myrtle
Lagerstroemia indica CG



Japanese Privet
Ligustrum japonicum LJ

European Olive
Olea europaea OE2

European Olive - Specimen
Olea europaea OE

Bougainvillea 'San Diego Red'
Bg

Dwarf Yaupon Holly
Ilex vomitoria 'Nana' Iv

Simpson's Stopper
Myrcianthes fragrans Mf



Egyptian Star Cluster
Pentas lanceolata 'Ruby Red' PI

Wild Coffee
Psychotria nervosa Pn

Confederate Jasmine
Trachelospermum jasminoides 'Star' Tj

Red Porterweed
Stachytarpheta 'Red Compacta' Pr

Bahama maidenbush
Savia bahamensis Sb

Coontie
Zamia pumila



PLANTING PALETTE

Scale: 1" = 30'-0"

April 7, 2024

1100 5th Street

Miami Beach, Florida

Zoning Data

No copies, transmissions, reproductions, or electronic revisions of any portions of these drawings in whole or in part be made without the express written permission of Zyscovich, LLC. All designs indicated in these drawings are property of Zyscovich, LLC. All copyrights reserved © 2023.



URBAN ROBOT ASSOCIATES

Souto Moura Arquitectos S.A.

ZYSCOVICH

100 N Biscayne Blvd. 27th Fl
Miami, FL 33132.2304
t 305.372.5222 f 305.577.4521

e info@zyscovich.com
w www.zyscovich.com

L206



Necklace pod
Sophora tomentosa St

Pink Dwarf Powderpuff
Calliandra emarginata br

Bay Cedar
Suriana maritima Sm

Lilyturf
Liriope muscari Im

Bahama Wild Coffee
Psychotria ligustrifolia Pl

Coral Creeper
Barleria repens br



Perennial Peanut
Arachis glabrata ag



PLANTING PALETTE

Scale: 1" = 30'-0"

1100 5th Street

Miami Beach, Florida

Zoning Data

April 7, 2024

No copies, transmissions, reproductions, or electronic revisions of any portions of these drawings in whole or in part be made without the express written permission of Zyscovich, LLC. All designs indicated in these drawings are property of Zyscovich, LLC. All copyrights reserved © 2023.



URBAN ROBOT ASSOCIATES

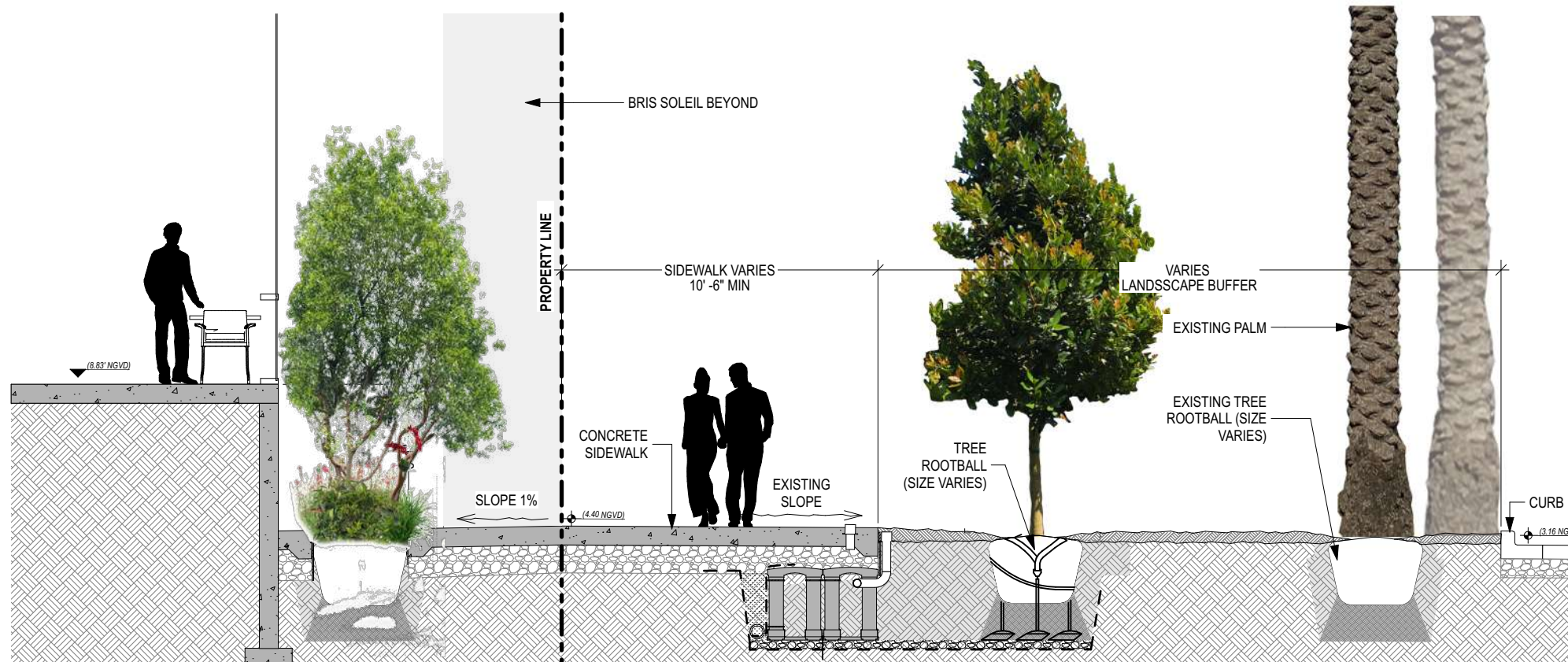
Souto Moura Arquitectos S.A.

ZYSCOVICH

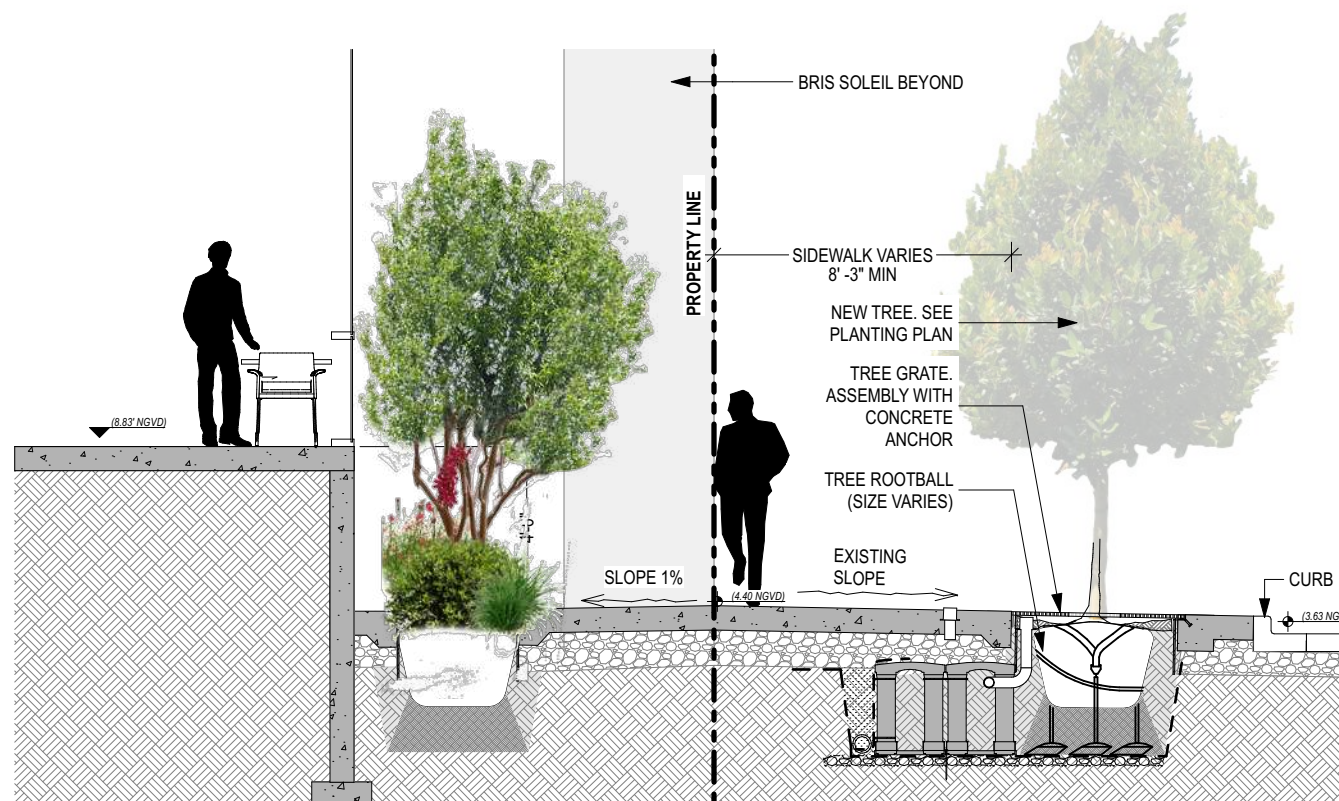
100 N Biscayne Blvd . 27th Fl
Miami . FL 33132.2304
t 305.372.5222 f 305.577.4521

e info@zyscovich.com
w www.zyscovich.com

L207



1 Section At Fifth



2 Section At Fifth



SIDEWALK SECTIONS

Scale: 3/16" = 1'

1100 5th Street

Miami Beach, Florida

Zoning Data

April 7, 2024

No copies, transmissions, reproductions, or electronic revisions of any portions of these drawings in whole or in part be made without the express written permission of Zyscovich, LLC. All designs indicated in these drawings are property of Zyscovich, LLC. All copyrights reserved © 2023.



URBAN ROBOT ASSOCIATES

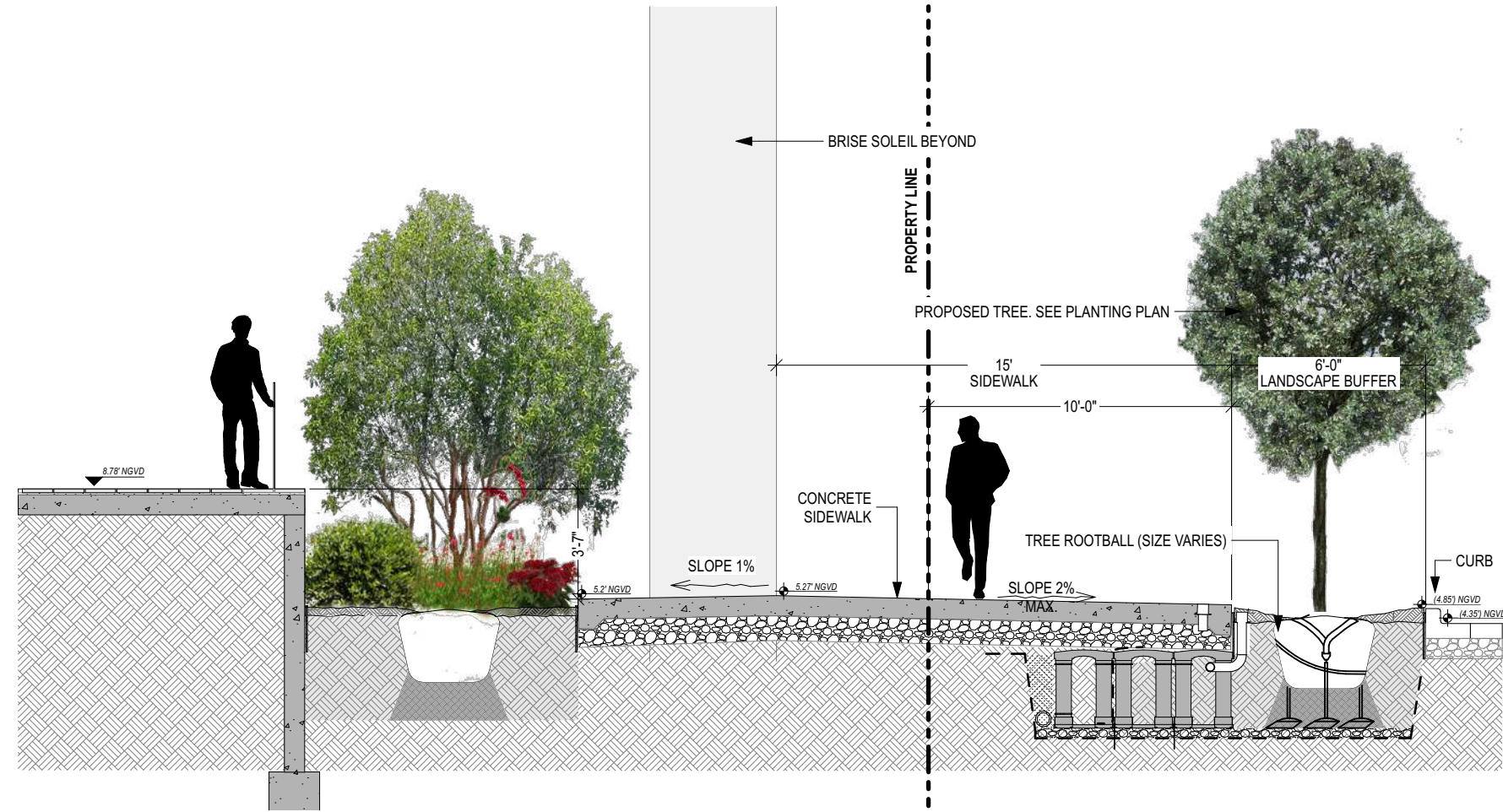
Souto Moura Arquitectos S.A.

ZYSCOVICH

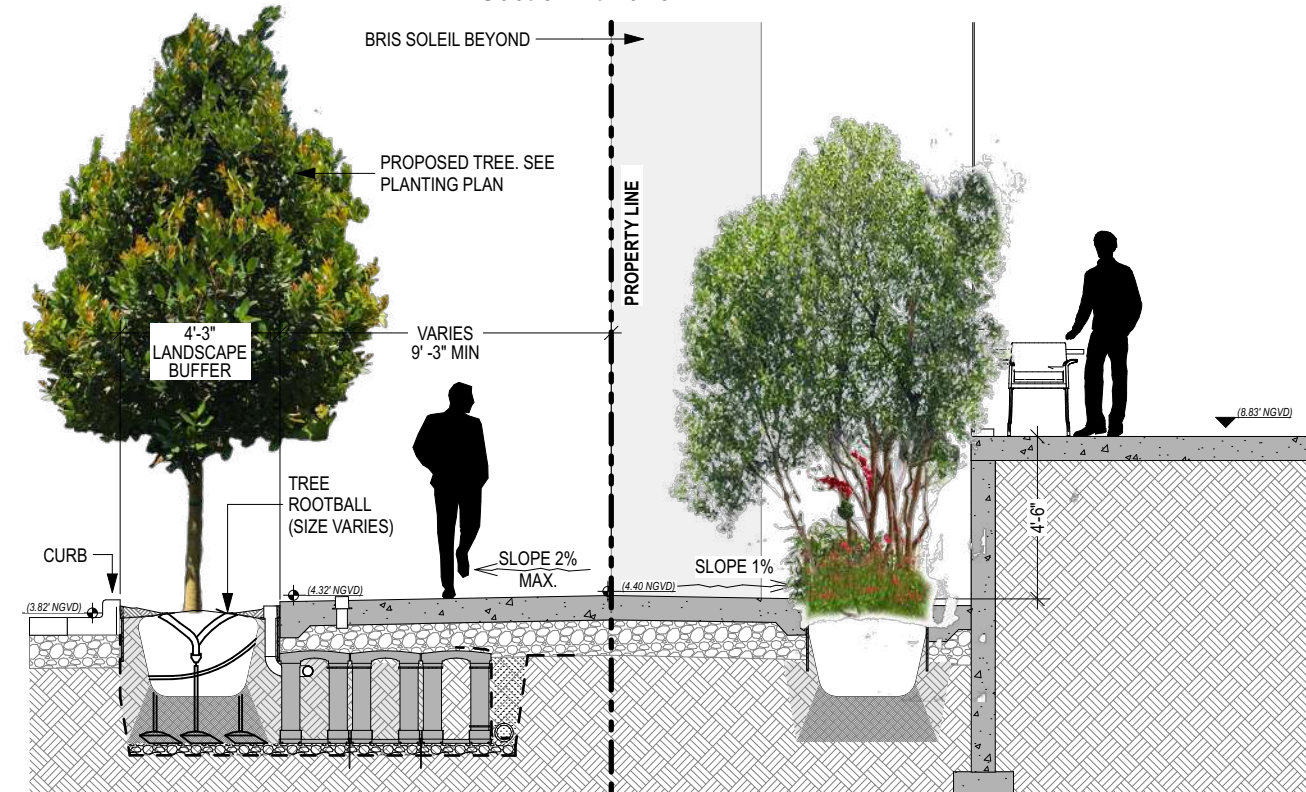
100 N Biscayne Blvd. 27th Fl
Miami, FL 33132.2304
t 305.372.5222 f 305.577.4521

e info@zyscovich.com
w www.zyscovich.com

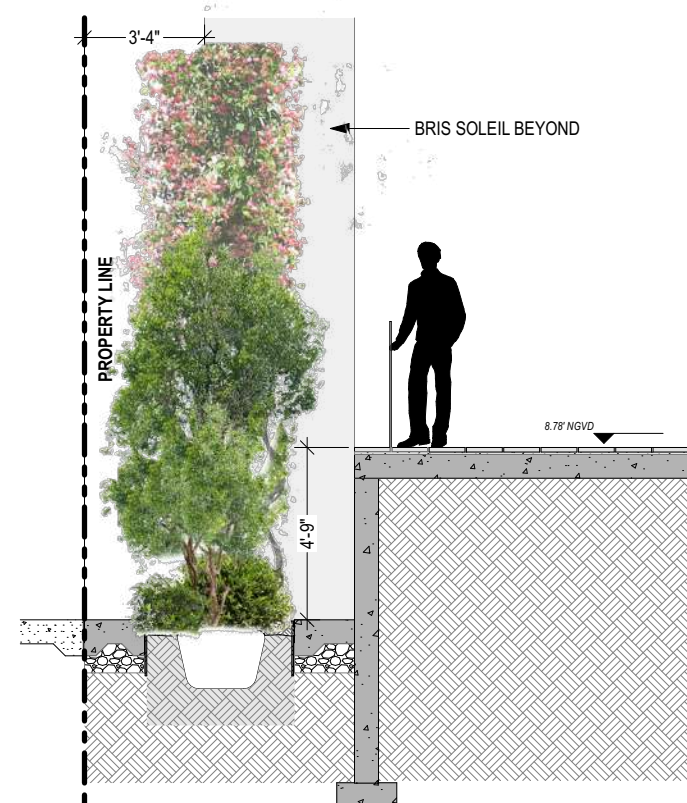
L300



1 Section At Lenox



2 Section At Alton



3 Section At South



SIDEWALK SECTIONS

Scale: 1" = 30'-0"

1100 5th Street

Miami Beach, Florida

Zoning Data

April 7, 2024

No copies, transmissions, reproductions, or electronic revisions of any portions of these drawings in whole or in part be made without the express written permission of Zyscovich, LLC. All designs indicated in these drawings are property of Zyscovich, LLC. All copyrights reserved © 2023.



URBAN ROBOT ASSOCIATES

Souto Moura Arquitectos S.A.

ZYSCOVICH

100 N Biscayne Blvd . 27th Fl
Miami . FL 33132.2304
t 305.372.5222 f 305.577.4521

e info@zyscovich.com
w www.zyscovich.com

L301



NORTH ELEVATION

Scale: 1" = 30'-0"

1100 5th Street

Miami Beach, Florida

Zoning Data

April 7, 2024

No copies, transmissions, reproductions, or electronic revisions of any portions of these drawings in whole or in part be made without the express written permission of Zyscovich, LLC. All designs indicated in these drawings are property of Zyscovich, LLC. All copyrights reserved © 2023.



URBAN ROBOT ASSOCIATES

Souto Moura Arquitectos S.A.

ZYSCOVICH

100 N Biscayne Blvd . 27th Fl
Miami . FL 33132.2304
t 305.372.5222 f 305.577.4521

e info@zyscovich.com
w www.zyscovich.com

L302



EAST ELEVATION

Scale: 1" = 30'-0"

1100 5th Street

Miami Beach, Florida

Zoning Data

April 7, 2024

No copies, transmissions, reproductions, or electronic revisions of any portions of these drawings in whole or in part be made without the express written permission of Zyscovich, LLC. All designs indicated in these drawings are property of Zyscovich, LLC. All copyrights reserved © 2023.



URBAN ROBOT ASSOCIATES

Souto Moura Arquitectos S.A.

ZYSCOVICH

100 N Biscayne Blvd. 27th Fl
Miami, FL 33132.2304
t 305.372.5222 f 305.577.4521

e info@zyscovich.com
w www.zyscovich.com

L303



CORE, STUCCO FINISH IN LIGHT COLOR
 CANOPY STEEL LIGHT STRUCTURE
 GLASS EXTRA CLEAR
 ALUMINUM OPENING FRAMES IN NATURAL COLOR
 "BRISE-SOLEIL"
 GLASS FIBRE REINFORCED CONCRETE (GRC)
 WARM WHITE
 ULTRA CLEAR GLASS RAILING
 CONCRETE SLABS WARM WHITE
 STAINLESS STEEL WIRE MESH TO HIDE CAR STACKERS
 RAMP CONCRETE

Roof +80'-6"
 14'-6"
 Level 5 +66'-0"
 14'-6"
 Level 4 +51'-6"
 14'-6"
 76'-4"
 Level 3 +37'-0"
 14'-0"
 Level 2 +23'-0"
 23'-0"
 Level 1M +11'-6"
 Mean Flood Elev. (NGVD 13.0) +4.17'
 Level 1 (NGVD 8.83') +0'-0"



SOUTH ELEVATION

Scale: 1" = 30'-0"

1100 5th Street

Miami Beach, Florida

Zoning Data

April 7, 2024

No copies, transmissions, reproductions, or electronic revisions of any portions of these drawings in whole or in part be made without the express written permission of Zyscovich, LLC. All designs indicated in these drawings are property of Zyscovich, LLC. All copyrights reserved © 2023.



URBAN ROBOT ASSOCIATES

Souto Moura Arquitectos S.A.

ZYSCOVICH

100 N Biscayne Blvd. 27th Fl
 Miami, FL 33132.2304
 t 305.372.5222 f 305.577.4521

e info@zyscovich.com
 w www.zyscovich.com

L304

5TH STREET

WALL WASHER LIGHT

0.5

1

2

3

4

5

6

7

8

9

PROPERTY LINE

PROPERTY LINE



ALTON ROAD

PROPERTY LINE

PROPERTY LINE

0.49

LENOX AVENUE

Lighting schedule		
2D Symbol	Quantity	Element ID
	26	Wall Washer
	71	Well Light - Street Tree

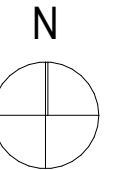
NEW WELL-LIGHTS AT TREE GRATES

REMOVE ALL EXISTING LIGHT POLES

PROPERTY LINE

PROPERTY LINE

4TH STREET



SITE LIGHTING



Scale: 1" = 30'-0"

1100 5th Street

Miami Beach, Florida

Zoning Data

April 7, 2024

No copies, transmissions, reproductions, or electronic revisions of any portions of these drawings in whole or in part be made without the express written permission of Zyscovich, LLC. All designs indicated in these drawings are property of Zyscovich, LLC. All copyrights reserved © 2023.



URBAN ROBOT ASSOCIATES

Souto Moura Arquitectos S.A.

ZYSCOVICH

100 N Biscayne Blvd . 27th Fl
Miami . FL 33132.2304
t 305.372.5222 f 305.577.4521

e info@zyscovich.com
w www.zyscovich.com

L401