

- NOTES**
- EXISTING 1-STORY BUILDINGS SHALL BE COMPLETELY DEMOLISHED.
 - EXISTING BUILDING AREAS:**
 3907 = 3,562 SF.
 3915 = 3,618 SF.
 976 = 9,875 SF.
TOTAL = 17,055 SF.
 - EXISTING F.A.R.**
 17,055 / 11,882 = 1.435
 - EXISTING PARKING: 12 SPACES.**

Giller & Giller, Inc.
 The Giller Building
 976 Arthur Godfrey Road
 Miami Beach, Florida 33140
 (305) 368-9921
 GG@G&G.COM
 ARCHITECTS INTERIOR DESIGNERS CONSTRUCTION MANAGERS

GILLER TOWER
 MIAMI BEACH, FL
 976 Arthur Godfrey Road

DRB - FINAL SUBMITTAL

| DATE | REVISION DESCRIPTION |
|------|----------------------|
| | |
| | |
| | |

DEMOLITION PLAN

SHEET # **A-1.1** OF **2**

DATE: 04/07/24

CHECKED BY: [Signature]

APPROVED BY: [Signature]

PROJECT # 20110

NOTE:
 NO EXISTING TREES ON SITE.

GRAPHIC SCALE



1 DEMOLITION PLAN
 SCALE: 1/8" = 1'-0"



Giller & Giller, Inc.
 The Giller Building
 976 Arthur Godfrey Road
 Miami Beach, Florida 33140
 (305) 368-9971
 G&G@G&G.COM
 ARCHITECTS INTERIOR DESIGNERS CONSTRUCTION MANAGERS

GILLER TOWER

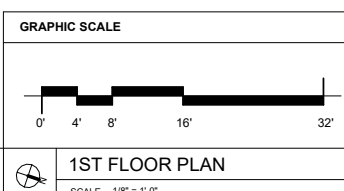
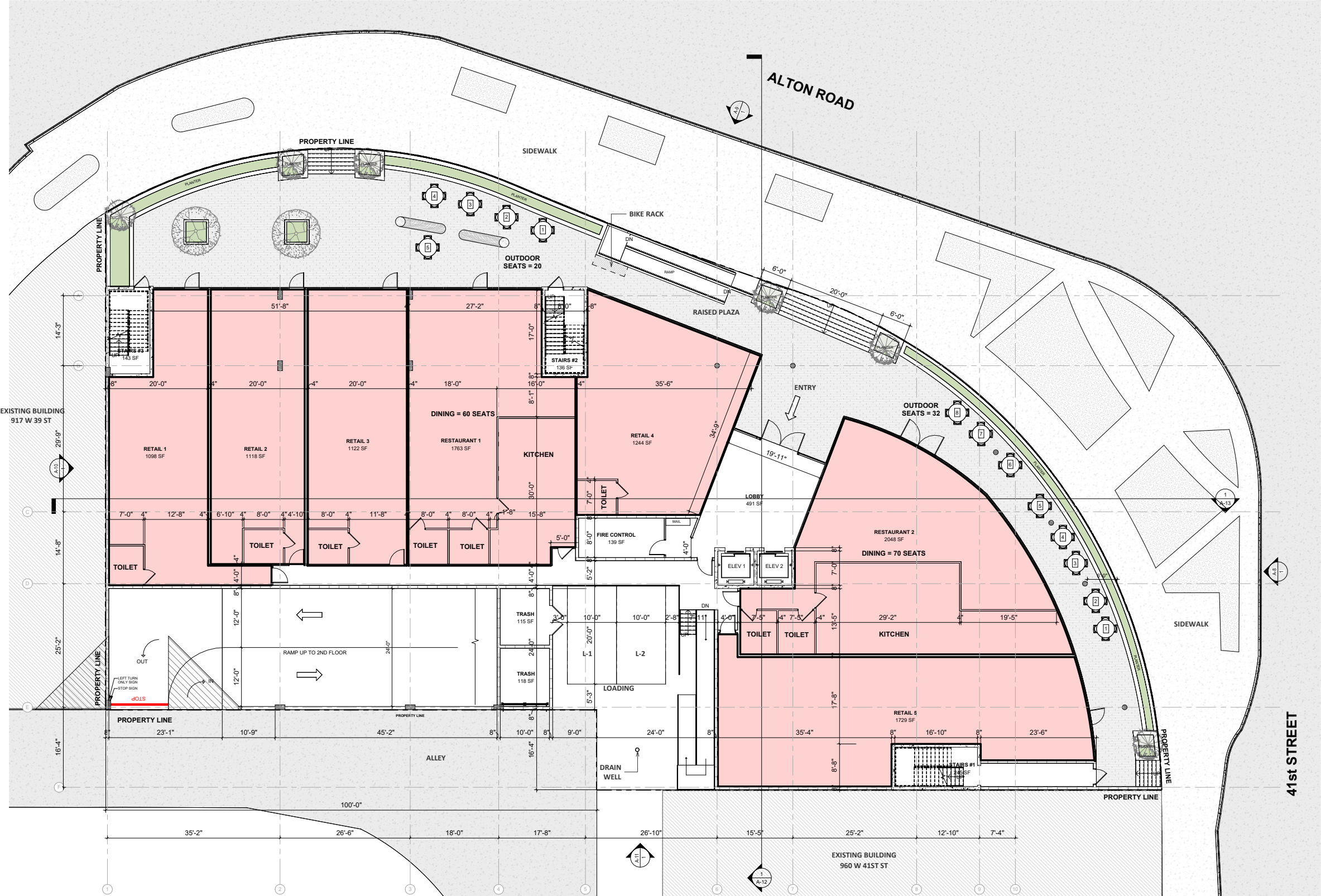
MIAMI BEACH, FL

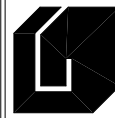
976 Arthur Godfrey Road

DRB - FINAL SUBMITTAL

| DATE | REVISION DESCRIPTION |
|------|----------------------|
| | |
| | |
| | |

| | | | |
|----------------|----------------|----------|-------------|
| SHEET # | SHEET TITLE | DATE | APPROVED BY |
| A-2 | 1ST FLOOR PLAN | 04/07/24 | |
| OF TOTAL | | | |
| PROJECT COMM # | | | |
| 23110 | | | |



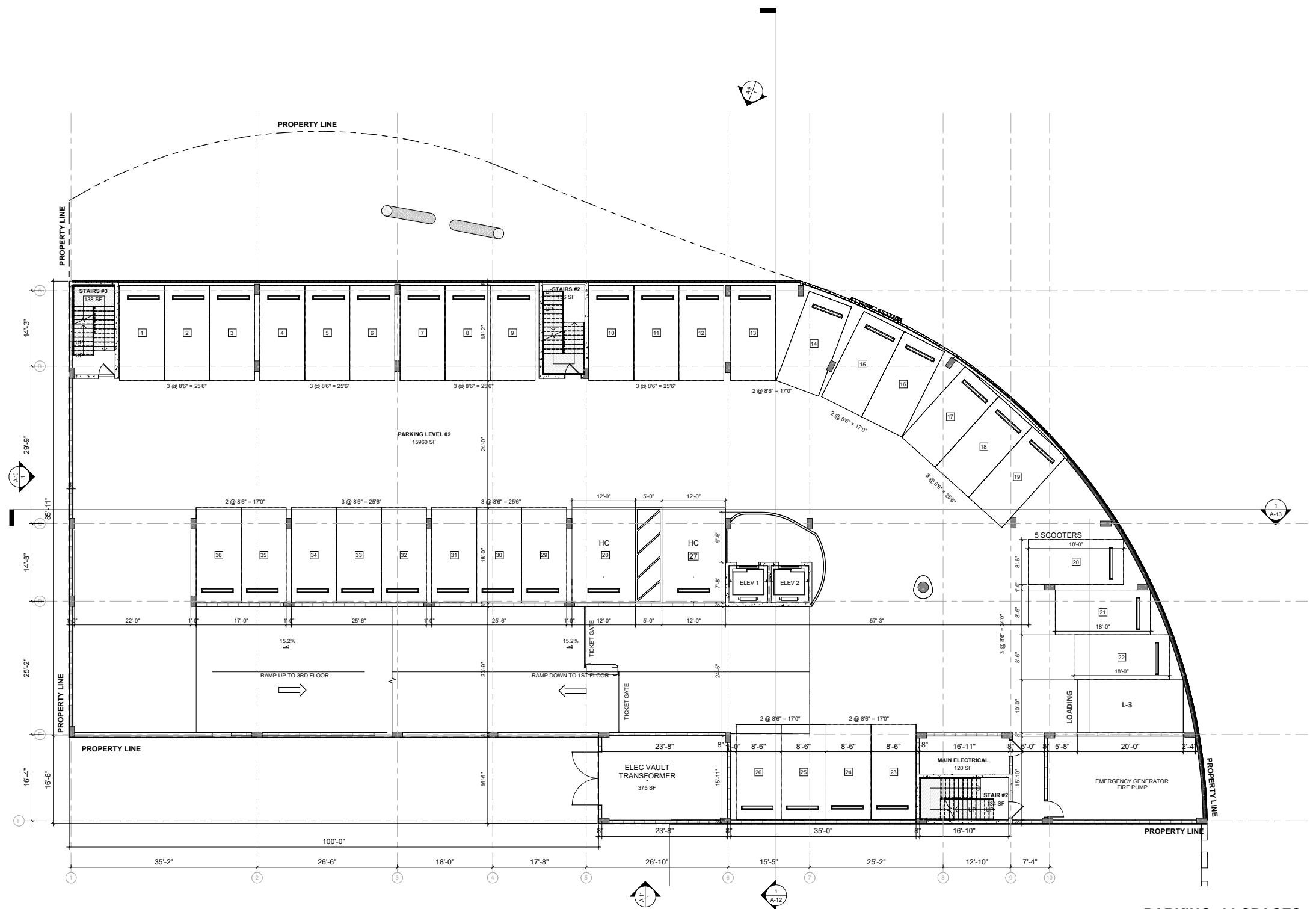


Giller & Giller, Inc.
 The Giller Building
 976 Arthur Godfrey Road
 Miami Beach, Florida 33140
 (305) 368-9971
 GILLER@GILLER.COM
 ARCHITECTS INTERIOR DESIGNERS CONSTRUCTION MANAGERS

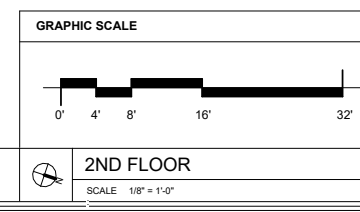
GILLER TOWER
 MIAMI BEACH, FL

976 Arthur Godfrey Road

DRB - FINAL SUBMITTAL



PARKING: 36 SPACES
1 LOADING SPACE
NOTE: TYP. PARKING SPACE = 8'-6" X 18'-0"



| DATE | REVISION DESCRIPTION |
|------|----------------------|
| | |
| | |
| | |

| | |
|---------------------|-----------------------|
| SHEET TITLE: | 2ND FLOOR PLAN |
| DATE: | 04/07/24 |
| PROJECT: | GILLER TOWER |
| APPROVED BY: | [Signature] |
| CHECKED BY: | [Signature] |
| CAD ID NAME: | [Name] |
| SCALE: | 1/8" = 1'-0" |



Giller & Giller, Inc.
 The Giller Building
 976 Arthur Godfrey Road
 Miami Beach, Florida 33140
 (305) 368-9971
 G&G@G&G.COM
 ARCHITECTS INTERIOR DESIGNERS CONSTRUCTION MANAGERS

GILLER TOWER

MIAMI BEACH, FL

976 Arthur Godfrey Road

DRB - FINAL SUBMITTAL

DATE REVISION DESCRIPTION

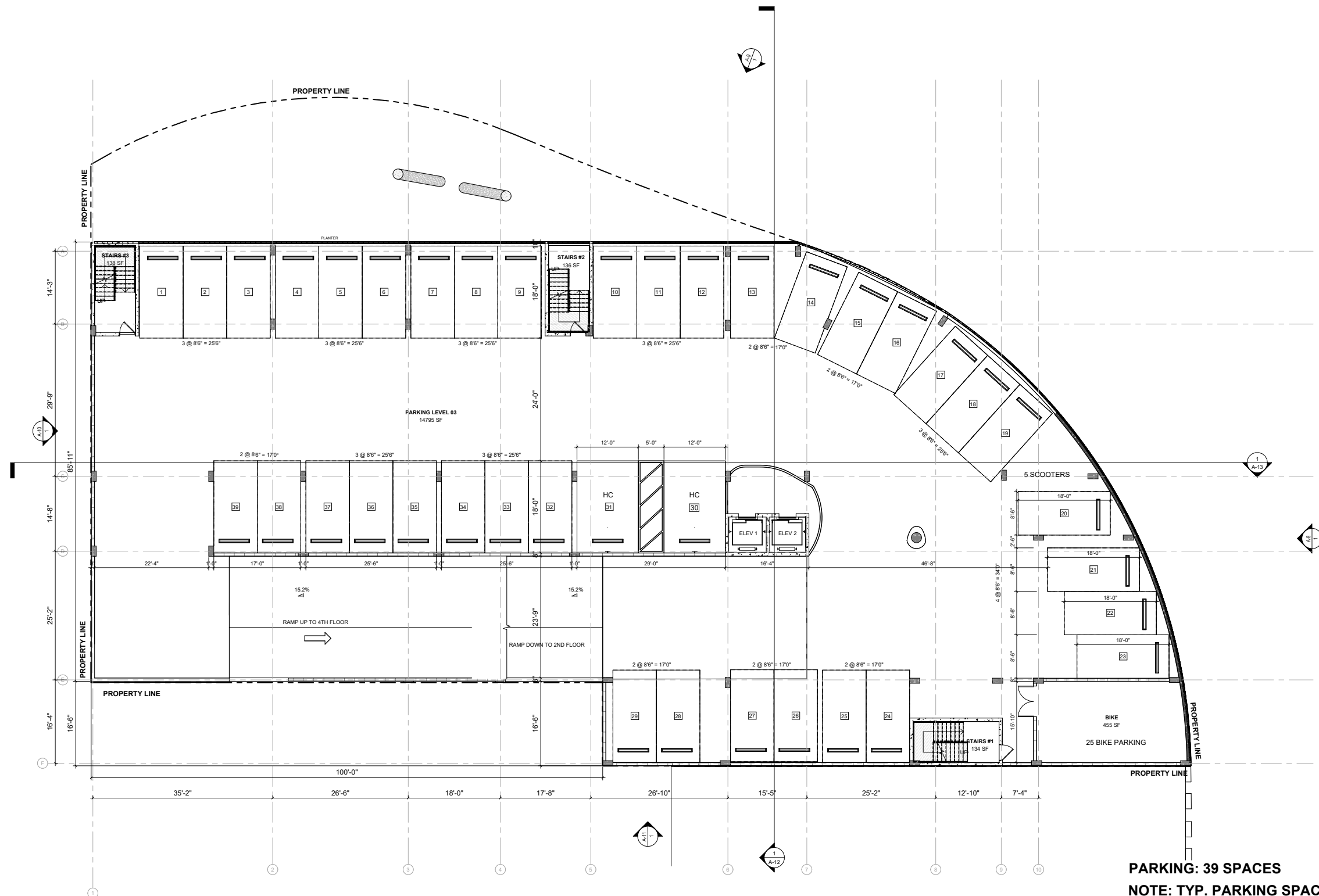
| DATE | REVISION | DESCRIPTION |
|------|----------|-------------|
| | | |
| | | |
| | | |

copyright © 2013 Giller & Giller, Inc. All rights reserved.

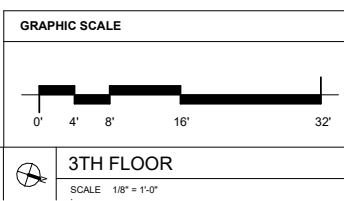
SHEET TITLE: 3RD FLOOR PLAN

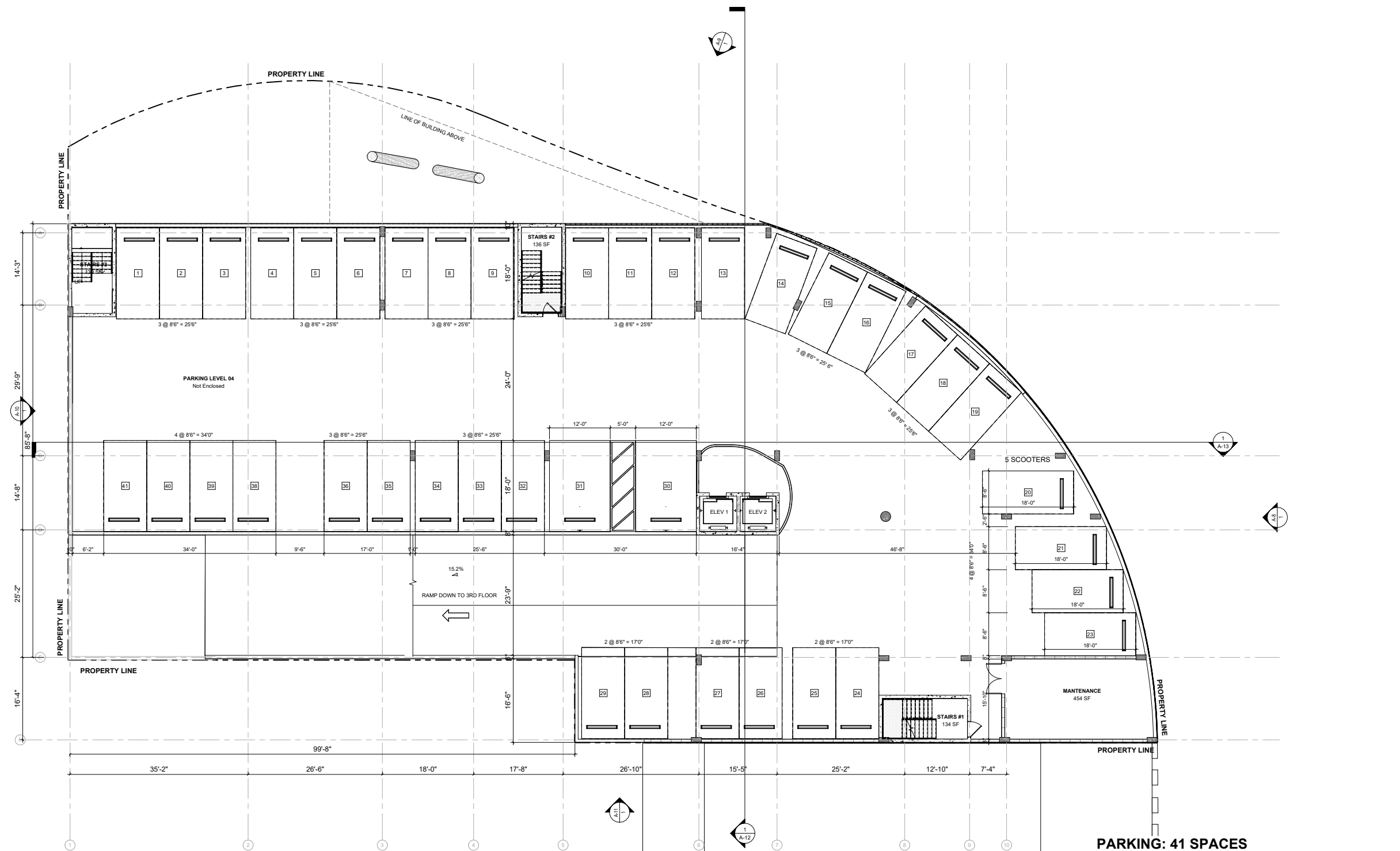
DATE: 04/07/24
 CHECKED BY: [Signature]
 APPROVED BY: [Signature]

SHEET # A-4 OF TOTAL 23/10

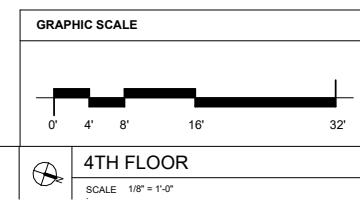


PARKING: 39 SPACES
NOTE: TYP. PARKING SPACE = 8'-6" X 18'-0"





PARKING: 41 SPACES
NOTE: TYP. PARKING SPACE = 8'-6" X 18'-0"



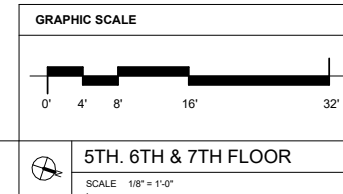
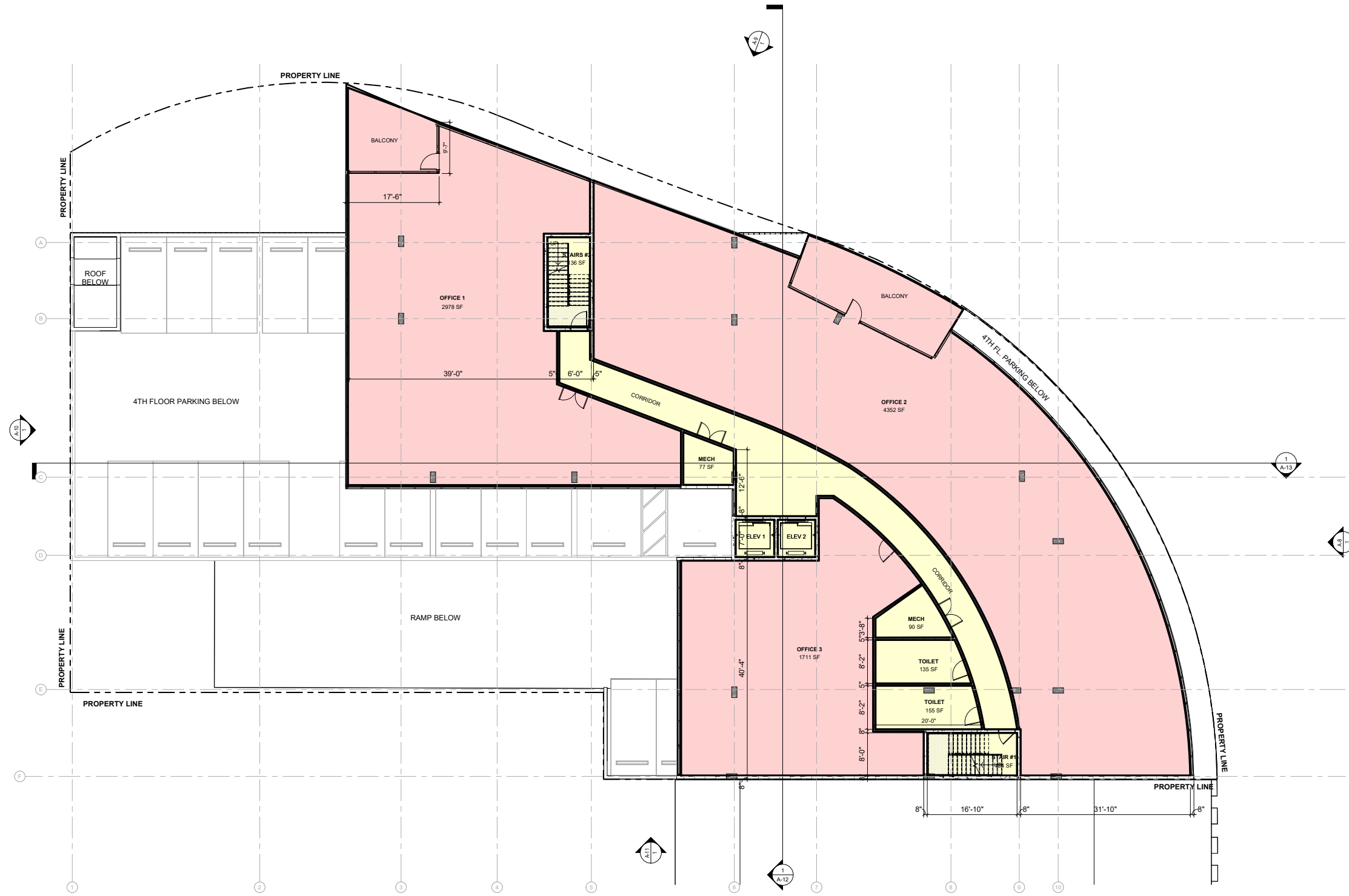
| | | | | | |
|--|---|---|---|---------------------------------|---------------------------------|
| SHEET # A-5 <small>OF TOTAL</small> | SHEET TITLE 4TH FLOOR PLAN | DATE 04/07/24 | REVISION DESCRIPTION | DATE 04/07/24 | REVISION DESCRIPTION |
| <small>APPROVED BY:</small> [Signature] | <small>APPROVED BY:</small> [Signature] | <small>CHECKED BY:</small> [Signature] | <small>CHECKED BY:</small> [Signature] | <small>DATE</small> 04/07/24 | <small>DATE</small> 04/07/24 |
| <small>Copyright © 2024 Giller & Giller, Inc. All rights reserved.</small> | | | | | |

GILLER & GILLER, Inc.
The Giller Building
 976 Arthur Godfrey Road
 Miami Beach, Florida 33140
 (305) 368-9921
 Giller97@GGL.COM
 ARCHITECTS INTERIOR DESIGNERS CONSTRUCTION MANAGERS

GILLER TOWER
 MIAMI BEACH, FL

DRB - FINAL SUBMITTAL

976 Arthur Godfrey Road



SHEET #
A-6
OF TOTAL
25/10

SHEET TITLE:
5TH, 6TH & 7TH FLOOR PLANS

DATE:
04/07/24

APPROVED BY:

CHECKED BY:

PROJECT:
GILLER TOWER

DATE:
04/07/24

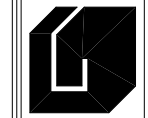
SCALE:
1/8" = 1'-0"

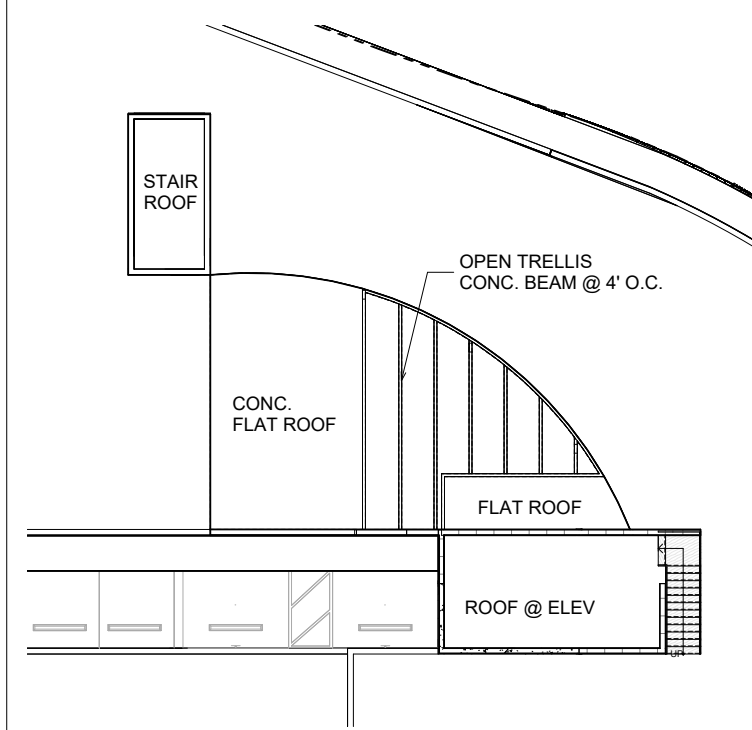
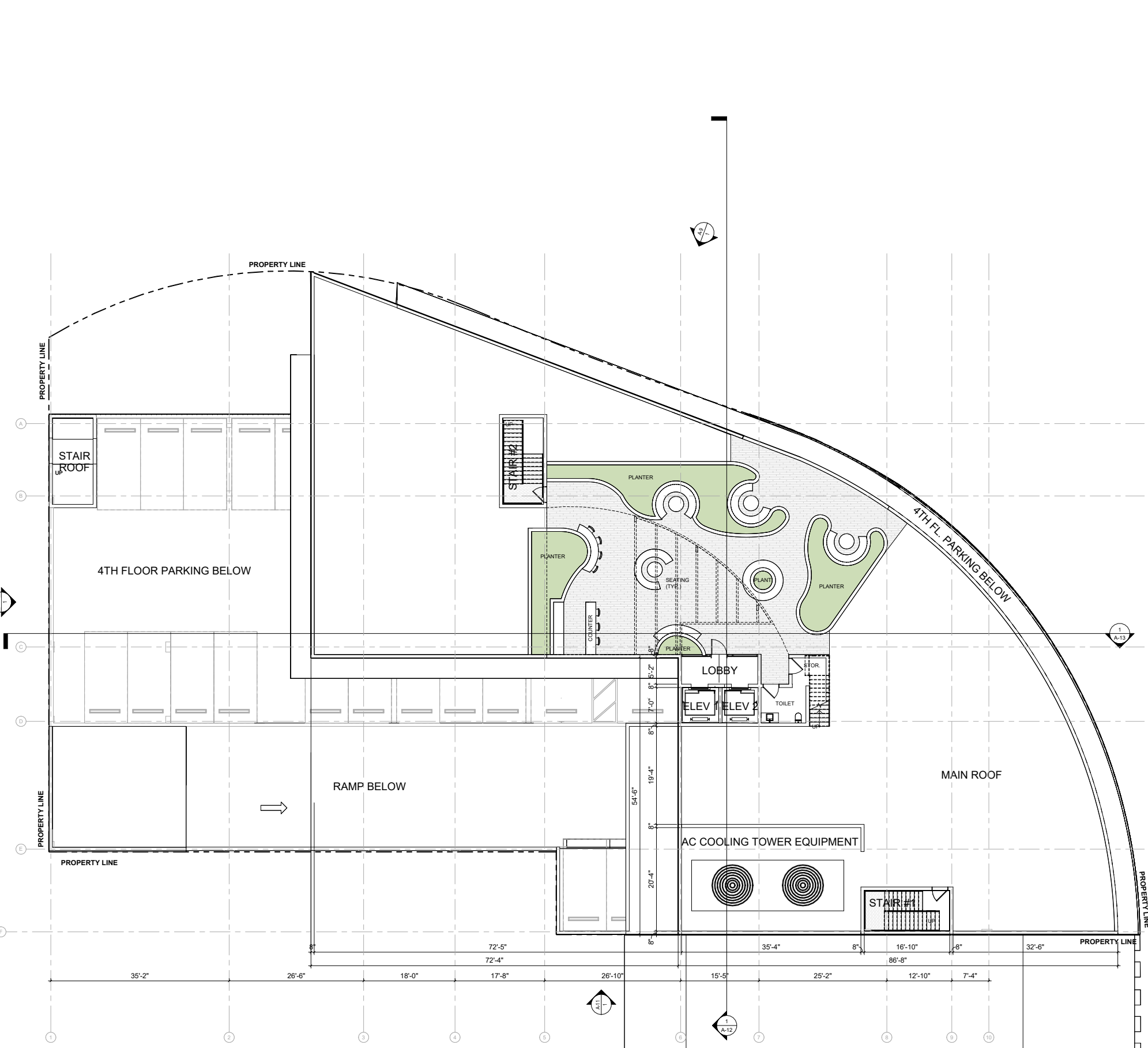
| DATE | REVISION DESCRIPTION |
|------|----------------------|
| | |
| | |
| | |
| | |

DRB - FINAL SUBMITTAL

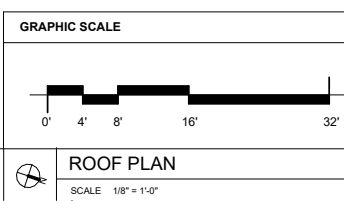
GILLER TOWER
MIAMI BEACH, FL

Giller & Giller, Inc.
The Giller Building
976 Arthur Godfrey Road
Miami Beach, Florida 33140
305.674.1100
GGI@GILLER.COM
ARCHITECTS INTERIOR DESIGNERS CONSTRUCTION MANAGERS





ROOF PLAN @ ROOF TERRACE
SCALE 1/8" = 1'-0"



Giller & Giller, Inc.
The Giller Building
976 Arthur Godfrey Road
Miami Beach, Florida 33140
305.673.1100
GGI@GGL.COM
ARCHITECTS INTERIOR DESIGNERS CONSTRUCTION MANAGERS

GILLER TOWER

MIAMI BEACH, FL

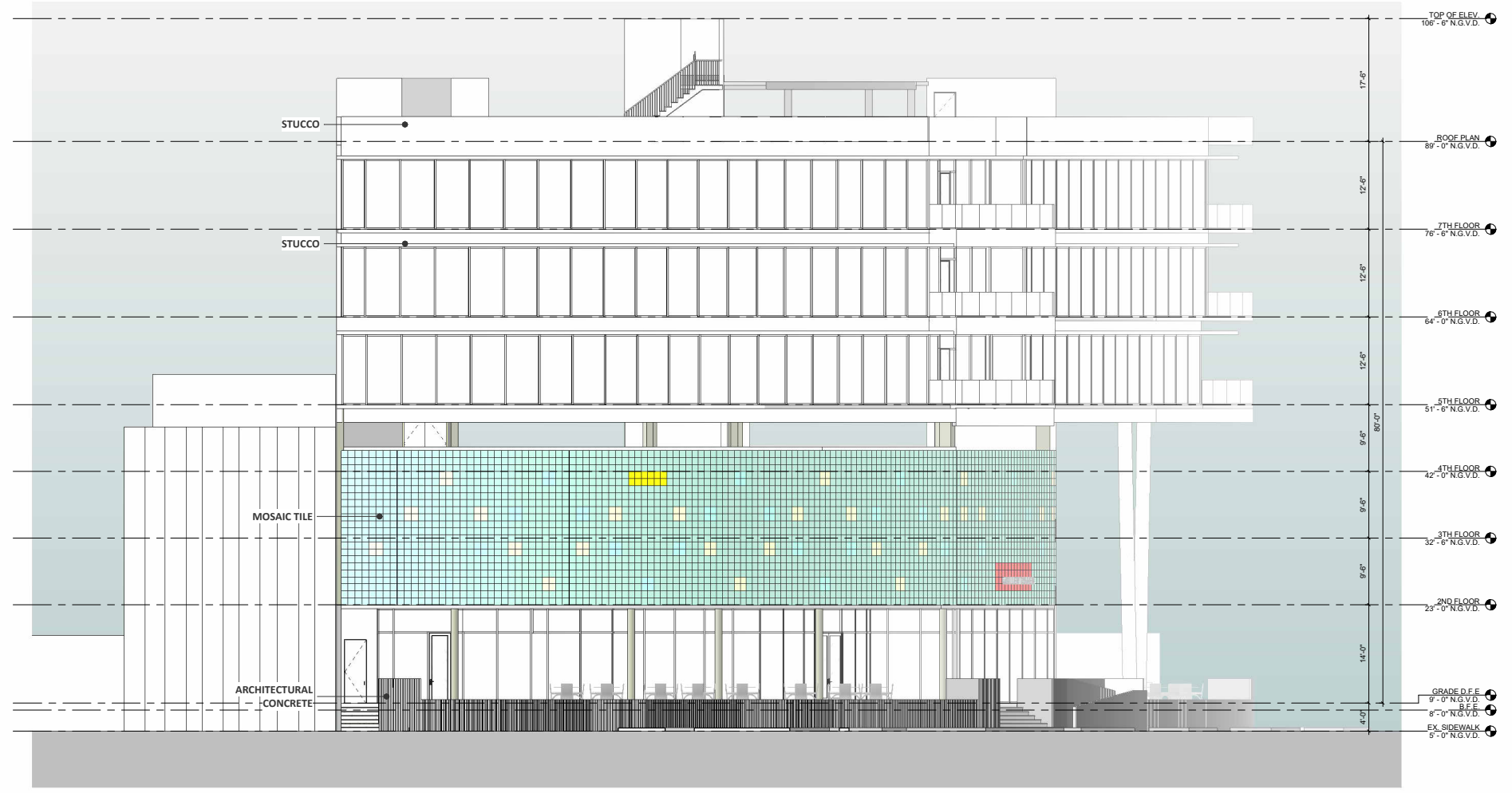
DRB - FINAL SUBMITTAL

| DATE | REVISION DESCRIPTION |
|------|----------------------|
| | |
| | |
| | |
| | |

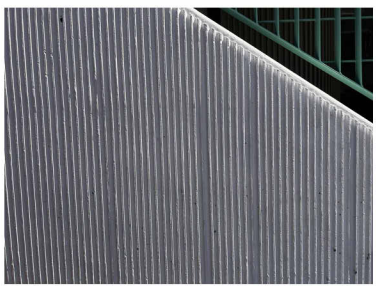
ROOF PLAN

| | |
|--------------|--------------|
| SHEET TITLE: | CAD ID NAME |
| CAD ID: | APPROVED BY: |
| DATE: | CHECKED BY: |
| 04/07/24 | |

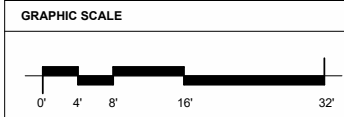
COPYRIGHT © 2024 Giller & Giller, Inc. ALL RIGHTS RESERVED.



GLASS MOSAIC TILE - 1' X 1'



ARCHITECTURAL CONCRETE



1 NORTH ELEVATION - 41ST ST.
SCALE 1/8" = 1'-0"

| DATE | REVISION DESCRIPTION |
|------|----------------------|
| | |
| | |
| | |

| | | | |
|--------------|---------------------------------|--------------|-------|
| SHEET # | A-8 | OF TOTAL | 20/10 |
| PROJECT NAME | NORTH ELEVATION 41ST ST. | | |
| DATE | 04/07/24 | CHECKED BY: | - - - |
| | | APPROVED BY: | - - - |
| | | | |

GILLER & GILLER, Inc.
 The Giller Building
 976 Arthur Godfrey Road
 Miami Beach, Florida 33140
 (305) 368-8921
 G&G@G&G.COM
 ARCHITECTS INTERIOR DESIGNERS CONSTRUCTION MANAGERS

GILLER TOWER
 MIAMI BEACH, FL
 976 Arthur Godfrey Road

DRB - FINAL SUBMITTAL



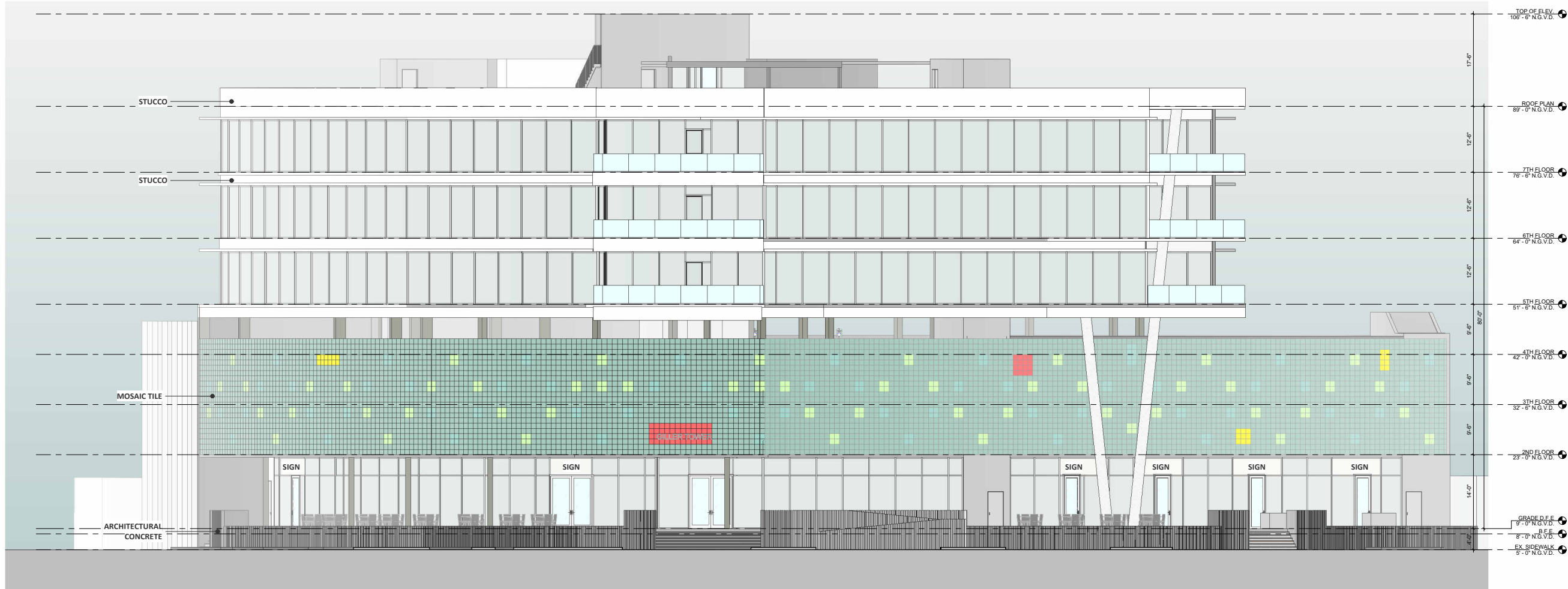
Giller & Giller, Inc.
 The Giller Building
 875 Arthur Godfrey Road
 Miami Beach, Florida 33140
 (305) 368-8921
 GILLER@GILL.COM
 ARCHITECTS INTERIOR DESIGNERS CONSTRUCTION MANAGERS

GILLER TOWER

MIAMI BEACH, FL

976 Arthur Godfrey Road

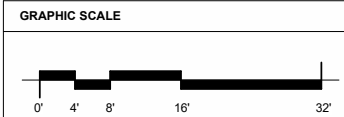
DRB - FINAL SUBMITTAL



GLASS MOSAIC TILE - 1' X 1'



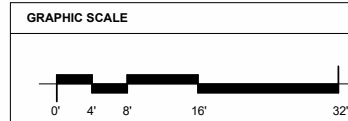
ARCHITECTURAL CONCRETE



1 WEST ELEVATION - ALTON RD.
 SCALE 1/8" = 1'-0"

| DATE | REVISION DESCRIPTION |
|------|----------------------|
| | |
| | |
| | |

| | | |
|-------------|-----------------------------|-------------|
| SHEET # | WEST ELEVATION ALTON RD. | CAD ID NAME |
| A-9 | | |
| OF TOTAL | | |
| 20/10 | | |
| CHECKED BY: | APPROVED BY: | |
| | | |



1 SOUTH ELEVATION
SCALE 1/8" = 1'-0"

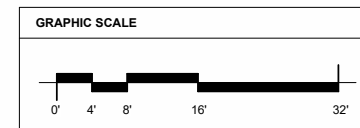
| DATE | REVISION DESCRIPTION |
|------|----------------------|
| | |
| | |
| | |

| | | | | |
|----------|-----------------|----------|-------------|-----------|
| SHEET # | SHEET TITLE | DATE | APPROVED BY | PROJECT # |
| A-10 | SOUTH ELEVATION | 04/07/24 | - - - | 20110 |
| OF TOTAL | | | | |
| 23 | | | | |

GILLER & GILLER, Inc.
The Giller Building
976 Arthur Godfrey Road
Miami Beach, Florida 33140
Tel: (305) 338-8921
Giller@G&G.COM
ARCHITECTS INTERIOR DESIGNERS CONSTRUCTION MANAGERS

GILLER TOWER
976 Arthur Godfrey Road
MIAMI BEACH, FL

DRB - FINAL SUBMITTAL



1 EAST ELEVATION - ALLEY
SCALE 1/8" = 1'-0"

| DATE | REVISION DESCRIPTION |
|------|----------------------|
| | |
| | |
| | |

SHEET TITLE: **EAST ELEVATION (ALLEY)**
 SHEET # **A-11** OF TOTAL 20/10
 DATE: 04/07/24
 CHECKED BY: [Signature]
 APPROVED BY: [Signature]
 GCI ID NAME: [Signature]

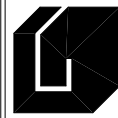
DRB - FINAL SUBMITTAL

GILLER TOWER
 MIAMI BEACH, FL
 976 Arthur Godfrey Road

Giller & Giller, Inc.
 The Giller Building
 976 Arthur Godfrey Road
 Miami Beach, Florida 33140
 Tel: (305) 368-9921
 GGI@GGL.COM
 ARCHITECTS INTERIOR DESIGNERS CONSTRUCTION MANAGERS

Architect:
 Giller & Giller, Inc.
 976 Arthur Godfrey Road
 Miami Beach, FL 33140
 Tel: (305) 368-9921
 GGI@GGL.COM

Architect:
 Giller & Giller, Inc.
 976 Arthur Godfrey Road
 Miami Beach, FL 33140
 Tel: (305) 368-9921
 GGI@GGL.COM



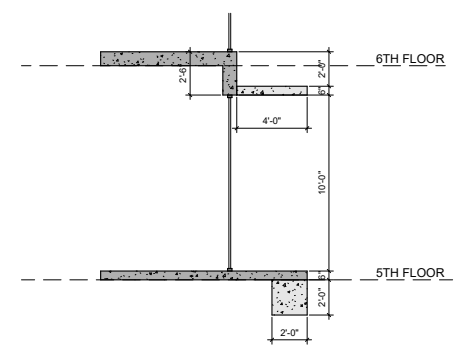
Giller & Giller, Inc.
 The Giller Building
 976 Arthur Godfrey Road
 Miami Beach, Florida 33140
 (305) 368-9971
 G&G@A&G.COM
 ARCHITECTS INTERIOR DESIGNERS CONSTRUCTION MANAGERS

GILLER TOWER
 MIAMI BEACH, FL
 976 Arthur Godfrey Road

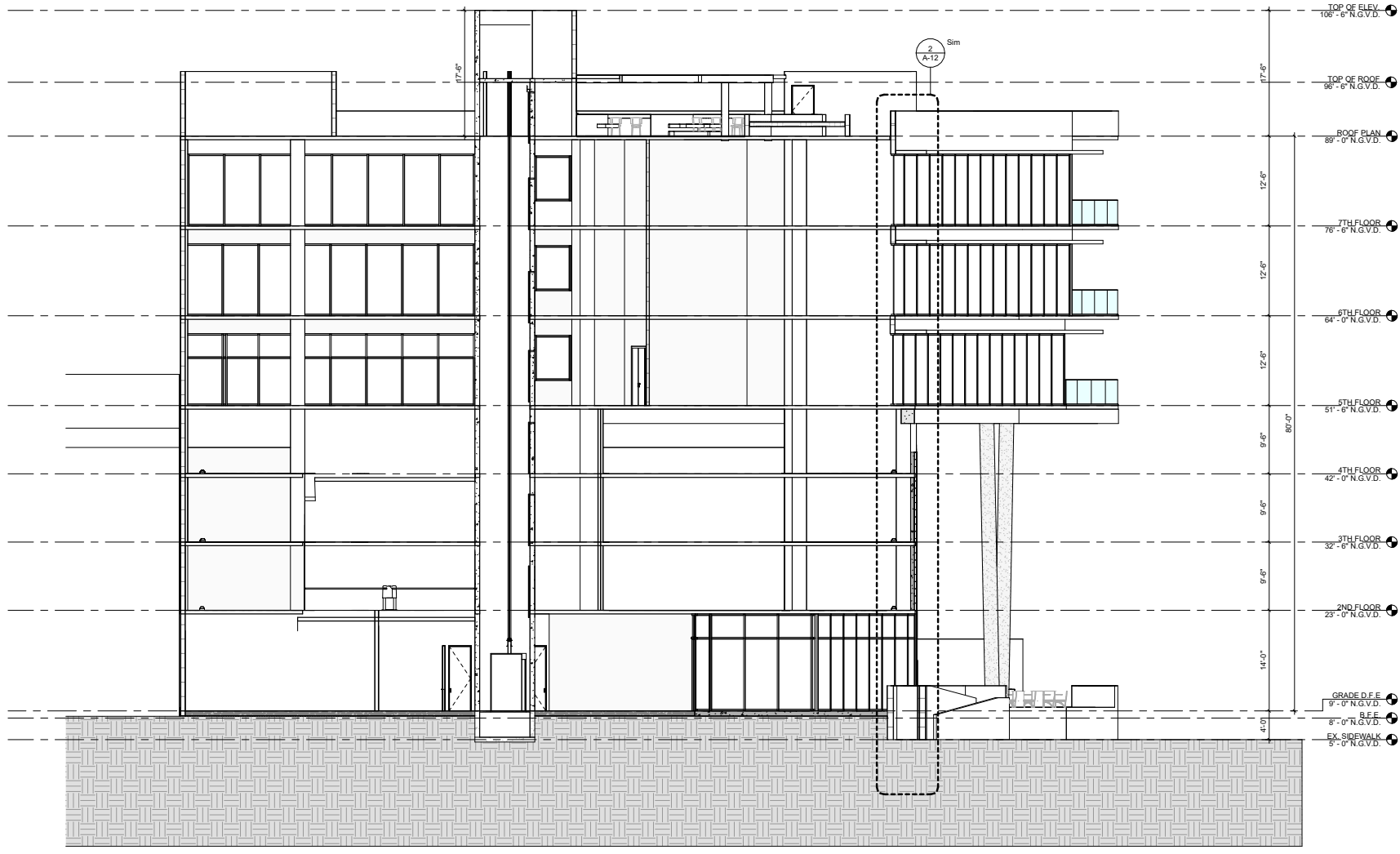
DRB - FINAL SUBMITTAL

| DATE | REVISION DESCRIPTION |
|------|----------------------|
| | |
| | |
| | |

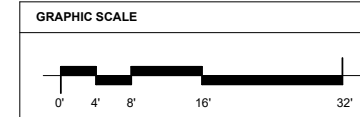
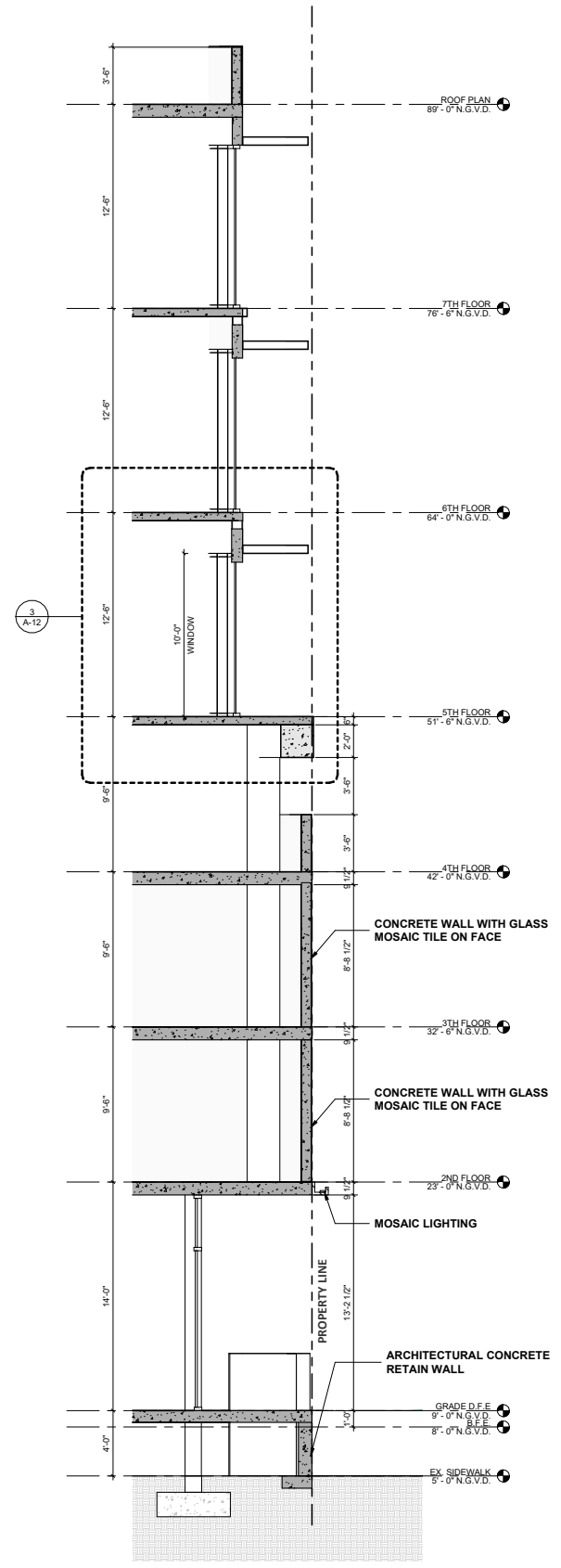
| | | | | |
|---------|-------------------|-------------|--------------|-------------|
| SHEET # | BUILDING SECTIONS | DATE | APPROVED BY: | CAD ID NAME |
| A-12 | EAST/WEST | 04/07/24 | --- | --- |
| OF | TOTAL | CHECKED BY: | --- | --- |
| 231/10 | 231/10 | --- | --- | --- |



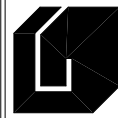
3 OFFICE SPANDREL
 SCALE 1/4" = 1'-0"



1 SECTION #1 - EAST/WEST
 SCALE 1/8" = 1'-0"



2 TYP. WALL SECTION
 SCALE 1/4" = 1'-0"



Giller & Giller, Inc.
 The Giller Building
 976 Arthur Godfrey Road
 Miami Beach, Florida 33140
 (305) 368-8921
 G&G@G&G.COM
 ARCHITECTS INTERIOR DESIGNERS CONSTRUCTION MANAGERS

GILLER TOWER

MIAMI BEACH, FL

976 Arthur Godfrey Road

DRB - FINAL SUBMITTAL

DATE REVISION DESCRIPTION

copyright © 2018 Giller & Giller, Inc. All rights reserved.

BUILDING SECTIONS NORTH/SOUTH

SHEET TITLE: BUILDING SECTIONS NORTH/SOUTH

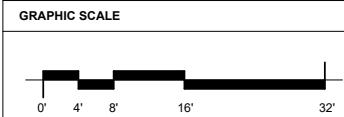
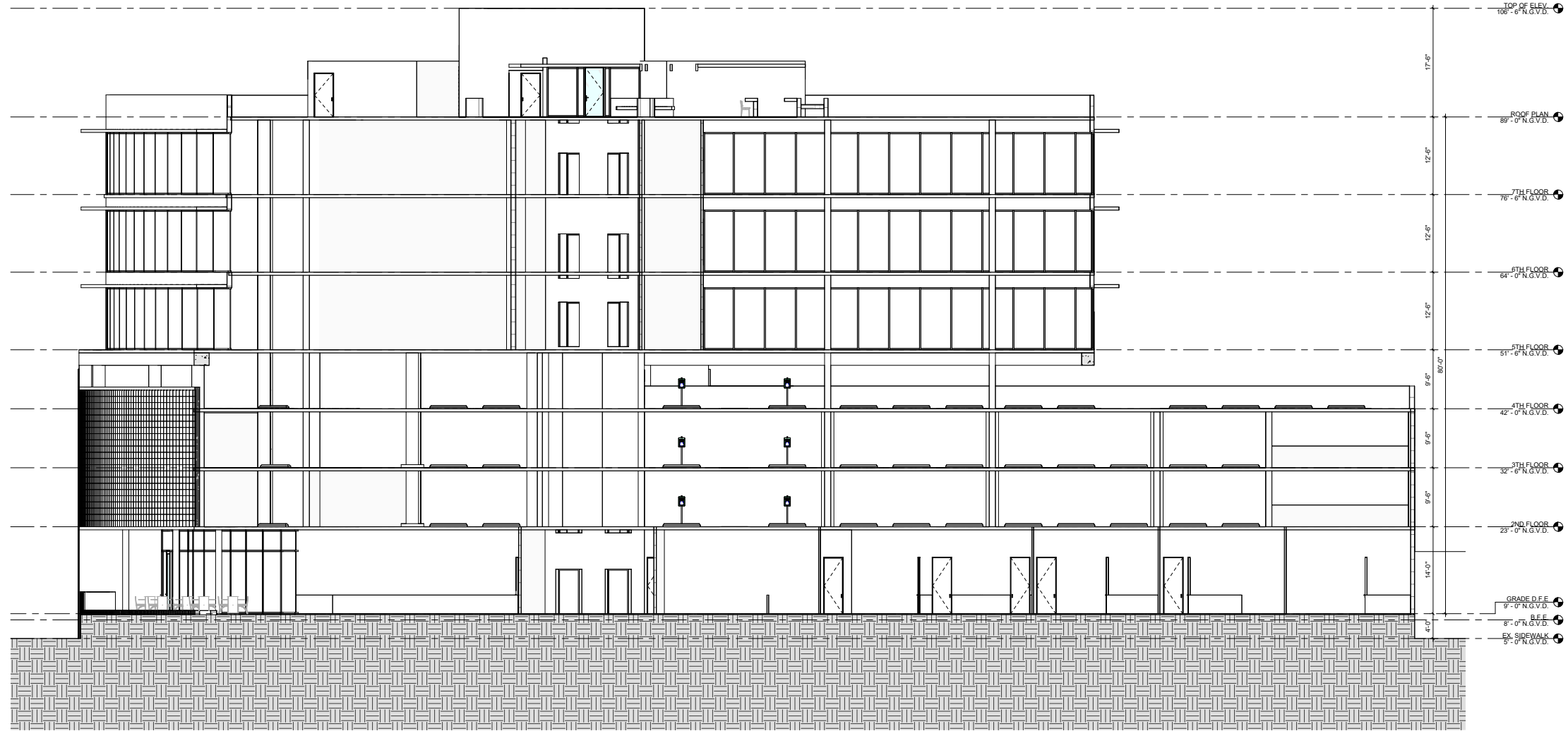
DATE: 04/07/24

CAD ID NAME: APPROVED BY: --

CHECKED BY: --

SHEET # **A-13**
OF TOTAL 20/10

SCALE: 1/8" = 1'-0"



1 SECTION #1 - NORTH/ SOUTH
 SCALE: 1/8" = 1'-0"



1 View 1
SCALE:



2 View 2
SCALE:



Giller & Giller, Inc.
The Giller Building
976 Arthur Godfrey Road
Miami Beach, Florida 33140
Tel: (305) 368-9921
G&G@G&G.COM
ARCHITECTS INTERIOR DESIGNERS CONSTRUCTION MANAGERS

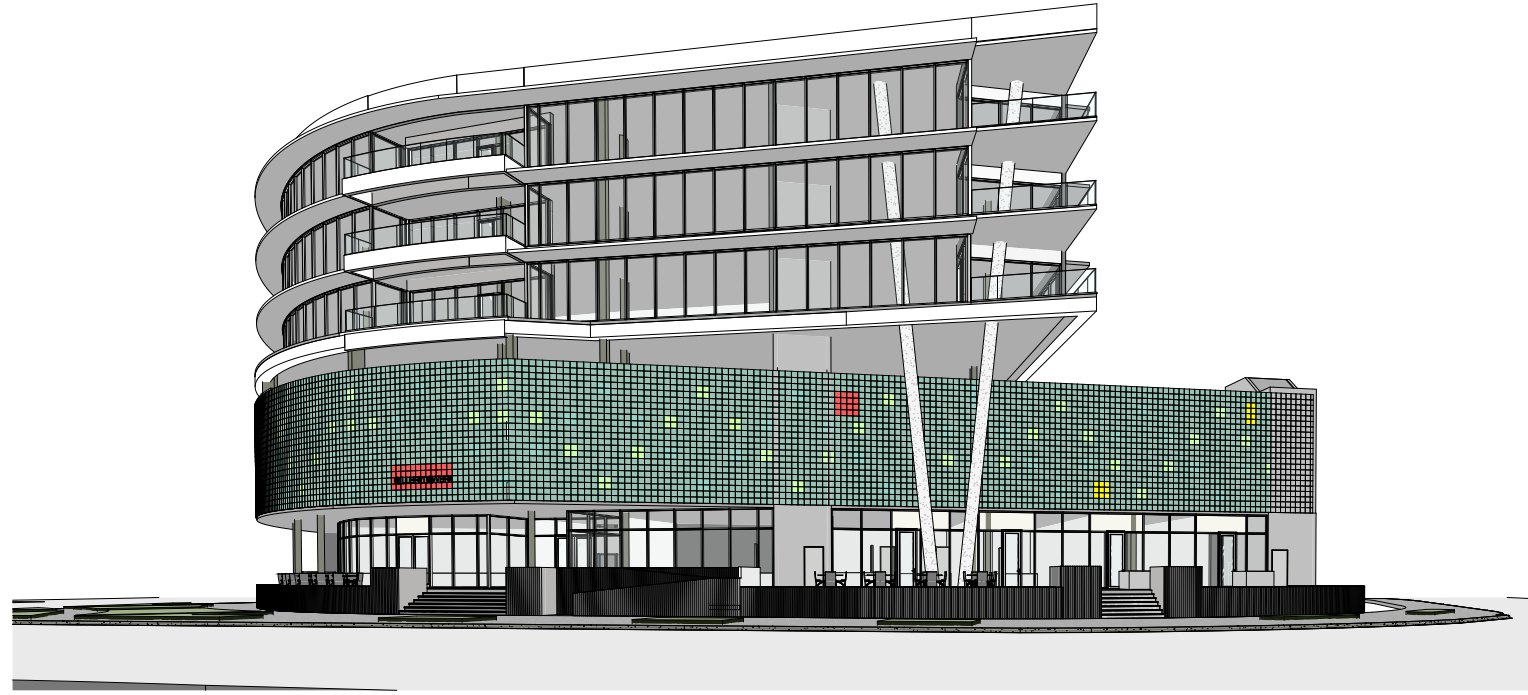
GILLER TOWER
MIAMI BEACH, FL
976 Arthur Godfrey Road

DRB - FINAL SUBMITTAL

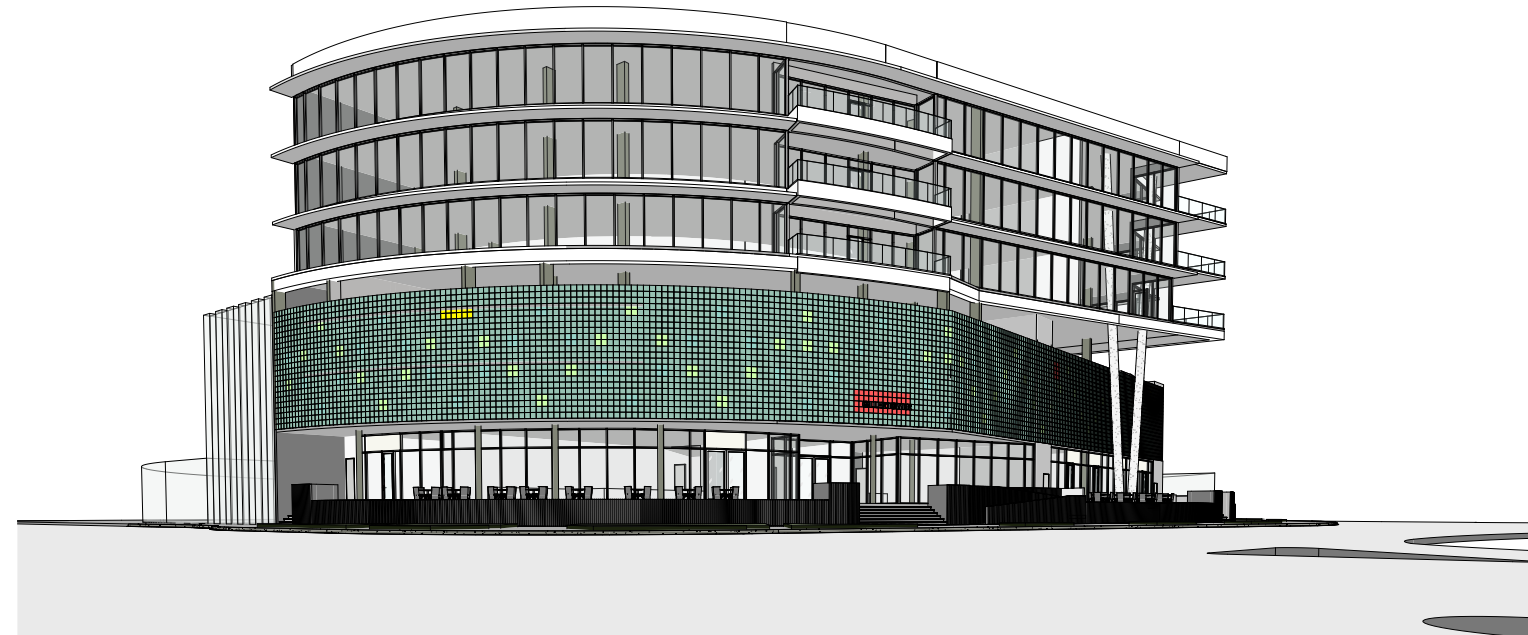
| DATE | REVISION DESCRIPTION |
|------|----------------------|
| | |
| | |
| | |

| | | | |
|------------------------|---|------------------|-----------------|
| SHEET # A-14 | SHEET TITLE EXTERIOR PERSPECTIVES | DATE 04/07/24 | CAD ID NAME |
| OF 23/10 | | CHECKED BY | APPROVED BY |

copyright © 2024 Giller & Giller, Inc. All rights reserved.



1 View 3
SCALE:



2 View 4
SCALE:



Giller & Giller, Inc.

The Giller Building
976 Arthur Godfrey Road
Miami Beach, Florida 33140
Tel: (305) 368-8921
Giller@G&G.COM
ARCHITECTS INTERIOR DESIGNERS CONSTRUCTION MANAGERS

GILLER TOWER

MIAMI BEACH, FL

976 Arthur Godfrey Road

DRB - FINAL SUBMITTAL

DATE REVISION DESCRIPTION

copyright © 2012 Giller & Giller, Inc. All rights reserved.

SHEET TITLE:
A-15 EXTERIOR PERSPECTIVES

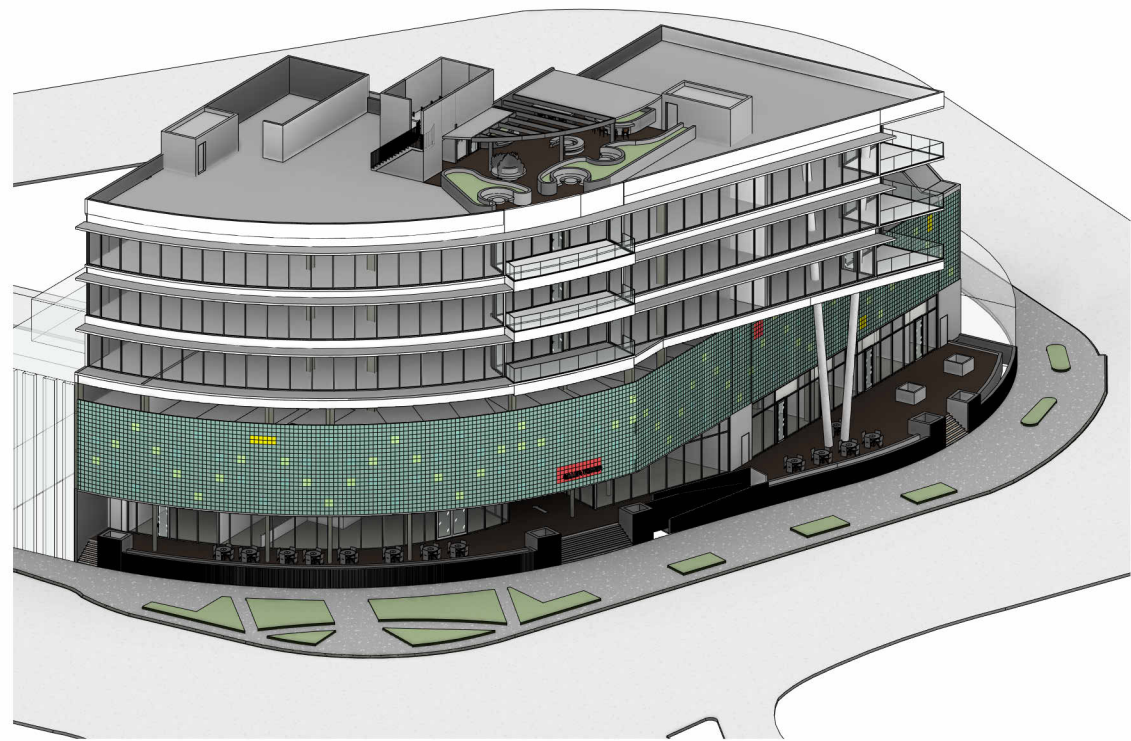
CAD ID NAME

APPROVED BY: --

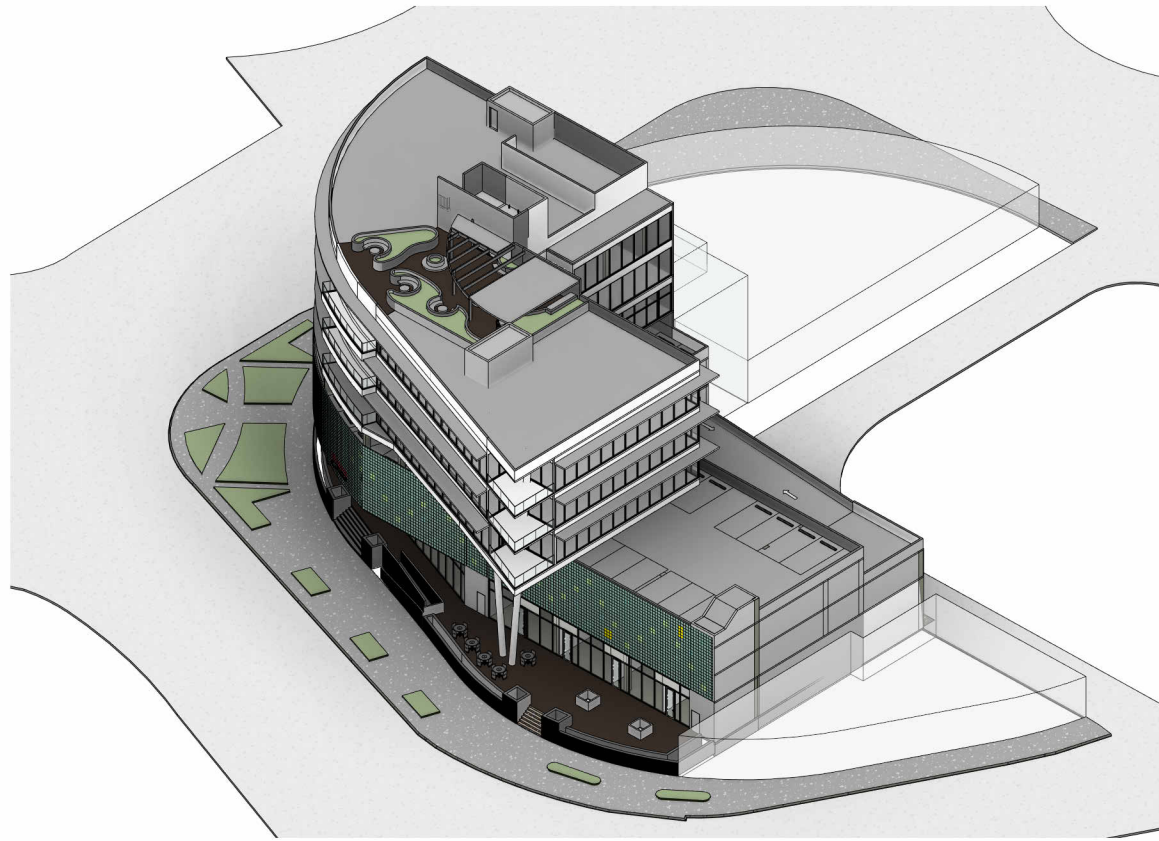
CHECKED BY: --

DATE: 04/07/24

SHEET #
A-15
OF TOTAL
23/10



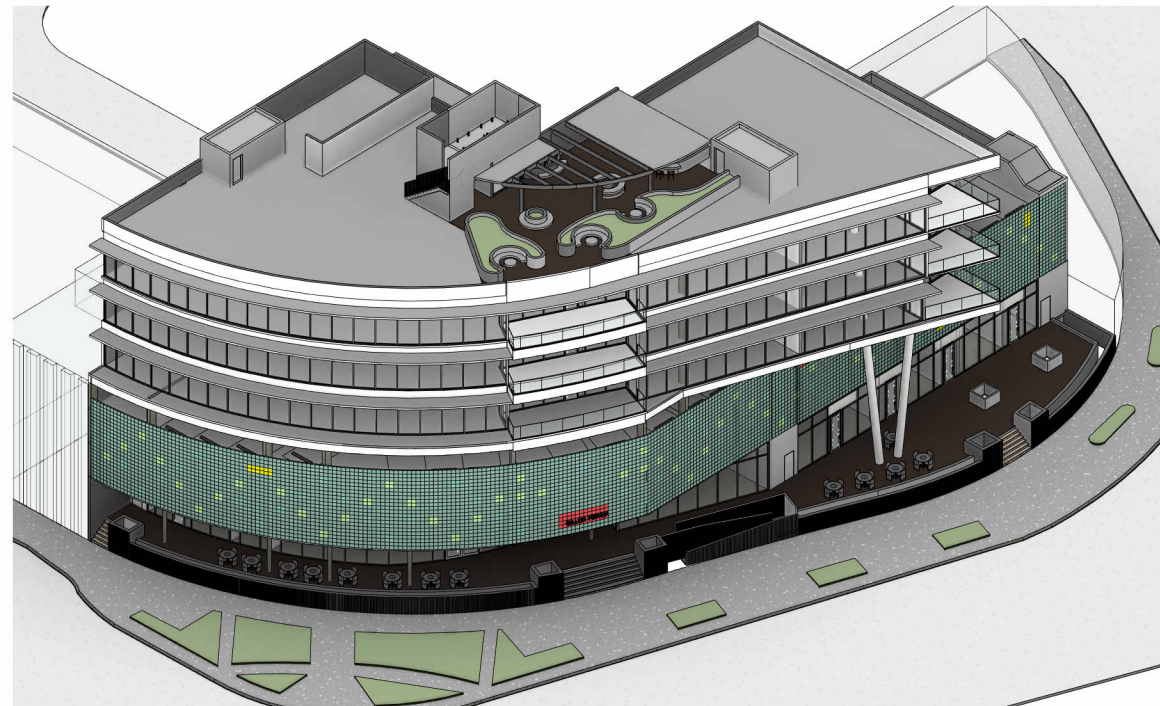
1 View 5
SCALE:



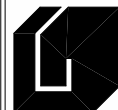
2 View 6
SCALE:



4 View 7
SCALE:



3 View 8
SCALE:



Giller & Giller, Inc.

The Giller Building
976 Arthur Godfrey Road
Miami Beach, Florida 33140
305.673.9271
G&G@G&G.COM
ARCHITECTS INTERIOR DESIGNERS CONSTRUCTION MANAGERS

GILLER TOWER

MIAMI BEACH, FL

976 Arthur Godfrey Road

DRB - FINAL SUBMITTAL

| DATE | REVISION DESCRIPTION |
|------|----------------------|
| | |
| | |
| | |

| | | | | |
|---|-------------------|---|--------------------|------------------|
| SHEET TITLE: A-16 EXTERIOR PERSPECTIVES | DATE: 04/07/24 | CHECKED BY: -- | APPROVED BY: -- | GRID NAME: -- |
| SHEET # A-16 | OF TOTAL 20/10 | COPYRIGHT © 2024 GILLER & GILLER, INC. ALL RIGHTS RESERVED. | | |