

DRB23-0941 - Supplemental Landscape Submittal - 02-12-2024



This document, together with the concepts and designs presented herein, as an instrument of service, is intended only for the specific purpose and client for which it was prepared. Reuse of and improper reliance on this document without written authorization and adaptation by Green Earth Landscape Architecture, shall be without liability to Green Earth Landscape Architecture, LLC.

BELOW IS AN AUTHORIZED DIGITAL SIGNATURE AND SEAL OF THE PROFESSIONAL LISTED, BY WAY OF THIS SIGNATURE I ATTEST THAT THE DOCUMENTS HEREIN, IF UNDER A VERIFIED ELECTRONIC SEAL, WERE PREPARED, SIGNED AND AUTHORIZED FOR SUBMITTAL, BY ME ON THE DATE OF SIGNING, WITH ALL AUTHORITY AND RIGHTS GRANTED TO ME BY THE STATE OF FLORIDA SS 481.303 PART II AND ASSOCIATED REFERENCES THEREIN.

PROJECT #	DATE	SCALE	AS NOTED	DESIGNED BY	WDB	DRAWN BY	WDB	CHECKED BY	WDB	No.	REVISIONS	DATE	BY
23-105	09-11-23												

PROJECT #
23-105
DATE
09-11-23
SCALE
AS NOTED
DESIGNED BY
WDB
DRAWN BY
WDB
CHECKED BY
WDB

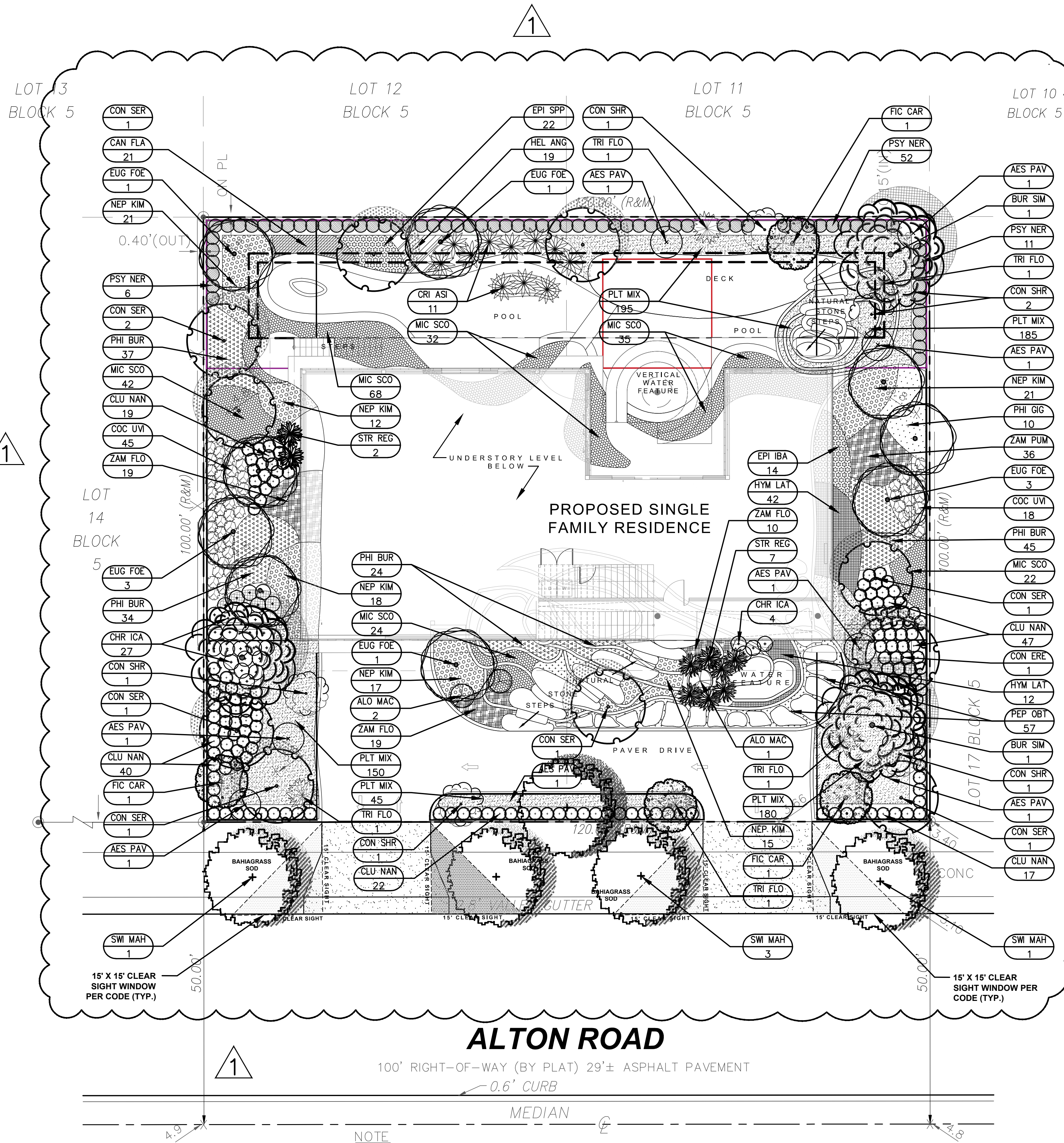
HOUSE OF KIRSCHNER
4410 Alton Road
Miami Beach, FL
MIAMI-DADE COUNTY
FLORIDA

GREEN EARTH
LANDSCAPE ARCHITECTURE, LLC
WILTON MANORS, FLORIDA
PHONE: 954-418-1825
EMAIL: info@greenearthllc.com

COVER SHEET

SHEET NUMBER
L-000

This document, together with the concepts and designs presented herein, is intended only for the specific purpose and client for which it was prepared. Abuse of and improper reliance on this document without written authorization and adaptation by Green Earth Landscape Architects shall be without liability to Green Earth Landscape Architects, LLC.



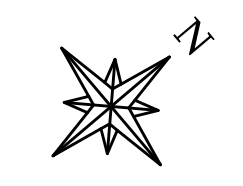
ALTON ROAD

100' RIGHT-OF-WAY (BY PLAT) 29± ASPHALT PAVEMENT
0.6' CURB
MEDIAN

NOTE
- B.M. USED: D-157-R
- ELEVATION: 4.93
(N.G.V.D. 1929)

GROUND LEVEL LANDSCAPE PLANTING PLAN

SCALE: 1" = 10'



GROUND LEVEL LANDSCAPE TABULAR DATA CODE CHART

REGULATING DOCUMENT: CITY OF MIAMI BEACH CHAPTER 126 - LANDSCAPE REQUIREMENTS		
SITE AREA: 12,000 SF (.28 ACRES)		
ZONING/LAND USE: RS-4	REQUIRED	PROVIDED
SEC. 126 (a)(1) - STREET TREE SIZE AND SPACING 1 TREE/20LF STREET FRONTAGE @ 84 LF	5 TREES	5 TREES
SEC. 126 (b)(4) - MAXIMUM LAWN GRASS/SOD AREAS 50% @ 12,000 SF	6,000 SF	4,235 SF
SEC. 126 (c) - MINIMUM NUMBER OF TREES FRONT YARD 2 (+ 6 FOR ADD'L LOT SF) = 8 TREES BACK YARD 3 (+ 6 FOR ADD'L LOT SF) = 9 TREES	8 TREES 9 TREES	10 TREES 11 TREES
SEC. 126 (d) - SHRUBS 12 SHRUBS PER TOTAL REQUIRED TREES	264 SHRUBS	314 SHRUBS
NATIVE/DROUGHT TOLERANT SPECIES REQUIREMENTS		
TREES	50%	100%
SHRUBS	60%	62% OF REQ'D SHRUBS

GROUND LEVEL PLANT LIST AND SPECIFICATIONS

TREES AND PALMS						
SYMBOL	QTY	LATIN NAME	COMMON NAME	SIZE	SPRD	DESCRIPTION
BUR SIM	3	Bursera simaruba	GUMBO LIMBO	3" DBH/ 12' HT.	6'	STRAIGHT SINGLE TRUNK, STANDARD, HEAVY EVEN BRANCHING, FIELD GROWN
CON SER	8	Conocarpus ere. 'Sericeus'	SILVER BUTTONWOOD	3" DBH/ 12' HT.	6'	STRAIGHT SINGLE TRUNK, STANDARD, HEAVY EVEN BRANCHING, FIELD GROWN
EUG FOE	10	Eugenia foetida	SPANISH STOPPER	2" DBH/ 10' HT.	5'	STRAIGHT SINGLE TRUNK, STANDARD, HEAVY EVEN BRANCHING, FIELD GROWN
SWI MAH	5	Swietenia mahagonii	MAHOGANY	5" DBH/ 18' HT.	8'	8.5' CT, STRAIGHT TRUNK, HEAVY EVEN BRANCHING, FIELD GROWN
SHRUBS AND SHRUB-LIKE						
SYMBOL	QTY	LATIN NAME	COMMON NAME	SIZE	SPRD	DESCRIPTION
AES PAV	6	Aesculus pavia	RED BUCKEYE	36"	36"	FULL, PLACE WHERE SHOWN ON SCALED PLAN
ALO MAC	3	Alocasia macrorrhiza 'Lutea'	LUTEA ALOCASIA	42"	42"	FULL, PLACE WHERE SHOWN ON SCALED PLAN
CAN FLA	21	Canna flaccida	YELLOW CANNA	18"	18"	FULL, SPACE 18" TO COMPLETELY FILL SPACES
CHR ICA	27	Chrysobalanus icaco	COCOPLUM	30"	24"	FULL, SPACE 24" ON CENTER TO FILL SPACE
CLU NAN	145	Clusia guttifera 'Nana'	DWARF LITTLELEAF CLUSIA	30"	24"	FULL, SPACE 24" ON CENTER TO FILL SPACE
COC UVI	63	Coccolobba uvifera	SEAGRAPE	30"	24"	FULL, SPACE 24" ON CENTER TO FILL SPACE
CON SHR	6	Conocarpus ere. 'Sericeus'	SILVER BUTTONWOOD SHRUB	6"	48"	FULL, PLACE WHERE SHOWN ON SCALED PLAN
CRI ASI	11	Crinum asiaticum	CRINUM LILY	6"	48"	FULL, PLACE WHERE SHOWN ON SCALED PLAN
EPI SPP	22	Epidendrum speciosa	REED STEM ORCHID	18"	18"	FULL, SPACE 18" TO COMPLETELY FILL SPACES
FIC CAR	4	Ficus carica	EDIBLE FIG TREE	6"	3'	SINGLE LEADER, THICK TRUNK, STAKED
HEL ANG	19	Helianthus angustifolia	SWAMP SUNFLOWER	18"	18"	FULL, SPACE 18" TO COMPLETELY FILL SPACES
HYM LAT	54	Hymenocallis latifolia	SPIDER LILY	18"	18"	FULL, SPACE 18" TO COMPLETELY FILL SPACES
MIC SCO	181	Microsorium scolopendria	WART FERN	18"	18"	FULL, SPACE 18" TO COMPLETELY FILL SPACES
NEP KIM	92	Philodendron 'Kimberly Queen'	KIMBERLY QUEEN FERN	24"	24"	FULL, SPACE 24" TO COMPLETELY FILL SPACES
PHI BUR	140	Philodendron 'Burle Marx'	BURLE MARX PHILODENDRON	18"	18"	FULL, SPACE 18" TO COMPLETELY FILL SPACES
PHI GIG	10	Philodendron giganteum	GIANT PHILODENDRON	30"	30"	FULL, SPACE 30" TO COMPLETELY FILL SPACES
PEP OBT	57	Peperomia obtusifolia	BABY RUBBER PLANT	6"	12"	FULL, SPACE 12" TO COMPLETELY FILL SPACES
PSY NER	69	Psychotria nervosa	WILD COFFEE	36"	30"	FULL, SPACE 24" TO CREATE DENSE CONT. HEDGE
STR REG	9	Strelitzia reginae	ORANGE BIRD OF PARADISE	42"	42"	FULL, 3 PPP, SPACE 36" ON CENTER TO FILL SPACES W/OVERLAP
TRI FLO	4	Tripsacum floridana	DWARF FAKAHATCHEE	42"	48"	FULL, PLACE WHERE SHOWN ON SCALED PLAN
ZAM PUM	84	Zamia pumila	COONTIE	18"	18"	FULL, SPACE 18" TO FILL SPACES
GROUND COVER PLANTING MIX						
SYMBOL	QTY	LATIN NAME	COMMON NAME	SIZE	SPRD	DESCRIPTION
PLT MIX	38	Aquilegia canadensis	WILD COLUMBINE	18"	18"	FULL, SPACE 18" ON CENTER TO RANDOMLY FILL BEDS
PLT MIX	38	Coreopsis floridana	FLORIDA TICKSEED	18"	18"	FULL, SPACE 18" ON CENTER TO RANDOMLY FILL BEDS
PLT MIX	38	Dianella revoluta	FLAX LILY	18"	18"	FULL, SPACE 18" ON CENTER TO RANDOMLY FILL BEDS
PLT MIX	38	Dianella revoluta 'Baby Bliss'	BABY BLISS FLAX LILY	18"	18"	FULL, SPACE 18" ON CENTER TO RANDOMLY FILL BEDS
PLT MIX	38	Dipladania madenia 'Pink'	MANDEVILLA	18"	18"	FULL, SPACE 18" ON CENTER TO RANDOMLY FILL BEDS
PLT MIX	38	Erythrina herbacea	CORAL BEAN	18"	18"	FULL, SPACE 18" ON CENTER TO RANDOMLY FILL BEDS
PLT MIX	38	Gelsemium sempervirens	CAROLINA CREEPER	18"	18"	FULL, SPACE 18" ON CENTER TO RANDOMLY FILL BEDS
PLT MIX	38	Orthosiphon aristatus	CAT'S WHISKERS	18"	18"	FULL, SPACE 18" ON CENTER TO RANDOMLY FILL BEDS
PLT MIX	38	Pouteria campechiana	CANISTEL	18"	18"	FULL, SPACE 18" ON CENTER TO RANDOMLY FILL BEDS
PLT MIX	38	Rudbeckia hirta	BLACK-EYED SUSAN	18"	18"	FULL, SPACE 18" ON CENTER TO RANDOMLY FILL BEDS
PLT MIX	38	Ruellia brittonia 'Purple Showers'	RUPELLIA BRITTONIA PURPLE SHOWERS	18"	18"	FULL, SPACE 18" ON CENTER TO RANDOMLY FILL BEDS
PLT MIX	38	Salvia coccinea	SCARLET SALVIA	18"	18"	FULL, SPACE 18" ON CENTER TO RANDOMLY FILL BEDS
PLT MIX	38	Salvia lyrata	PURPLE KNOCKOUT SAGE	18"	18"	FULL, SPACE 18" ON CENTER TO RANDOMLY FILL BEDS
PLT MIX	38	Stokesia laevis	STOKES ASTER	18"	18"	FULL, SPACE 18" ON CENTER TO RANDOMLY FILL BEDS
PLT MIX	38	Symphitrichum elliottii	ELLIOT'S ASTER	18"	18"	FULL, SPACE 18" ON CENTER TO RANDOMLY FILL BEDS

WHERE 'BAHIAGRASS SOD' IS INDICATED SPECIES SHALL BE BAHIAGRASS ARGENTINE (*Paspalum notatum 'Argentine'*) VARIETY SOD AND INSTALLED PER DETAIL ON LANDSCAPE DETAILS SHEET
*N - ABOVE DENOTES FLORIDA NATIVE SPECIES - SEE NATIVE PERCENTAGE CALCULATIONS IN TABULAR DATA CHART
NOTE: SEE PRECEDING SHEETS FOR PLANTING NOTES AND SPECIFICATIONS

PROJECT # 23-105
DATE 09-11-23
SCALE AS NOTED
DESIGNED BY WDB
DRAWN BY WDB
CHECKED BY WDB

NO.	REVISIONS	DATE	BY

HOUSE OF KIRSCHNER
4410 Alton Road
Miami Beach, FL
MIAMI-DADE COUNTY, FLORIDA

GREEN EARTH
LANDSCAPE ARCHITECTURE, LLC
WILTON MANORS, FLORIDA
PHONE: 954-418-1925
EMAIL: info@greenearthllc.com

LANDSCAPE PLANTING
PLAN GROUND LEVEL

SHEET NUMBER
L-200

LICENSED PROFESSIONAL
William Dale Bryant
FL LICENSE NUMBER
LA6666943

GROUND LEVEL LANDSCAPE TABULAR DATA CODE CHART

REGULATING DOCUMENT: CITY OF MIAMI BEACH CHAPTER 126 - LANDSCAPE REQUIREMENTS		
SITE AREA: 12,000 SF (.28 ACRES)		
ZONING/LAND USE: RS-4	REQUIRED	PROVIDED
SEC. 126 (a)(1) - STREET TREE SIZE AND SPACING 1 TREE/20LF STREET FRONTAGE @ 84 LF	5 TREES	5 TREES
SEC. 126 (b)(4) - MAXIMUM LAWN GRASS/SOD AREAS 50% @ 12,000 SF	6,000 SF	4,235 SF
SEC. 126 (c) - MINIMUM NUMBER OF TREES FRONT YARD 2 (+ 6 FOR ADD'L LOT SF) = 8 TREES BACK YARD 3 (+ 6 FOR ADD'L LOT SF) = 9 TREES	8 TREES 9 TREES	10 TREES 11 TREES
SEC. 126 (d) - SHRUBS 12 SHRUBS PER TOTAL REQUIRED TREES	264 SHRUBS	314 SHRUBS
NATIVE/DROUGHT TOLERANT SPECIES REQUIREMENTS		
TREES	50%	100%
SHRUBS	60%	62% OF REQ'D SHRUBS

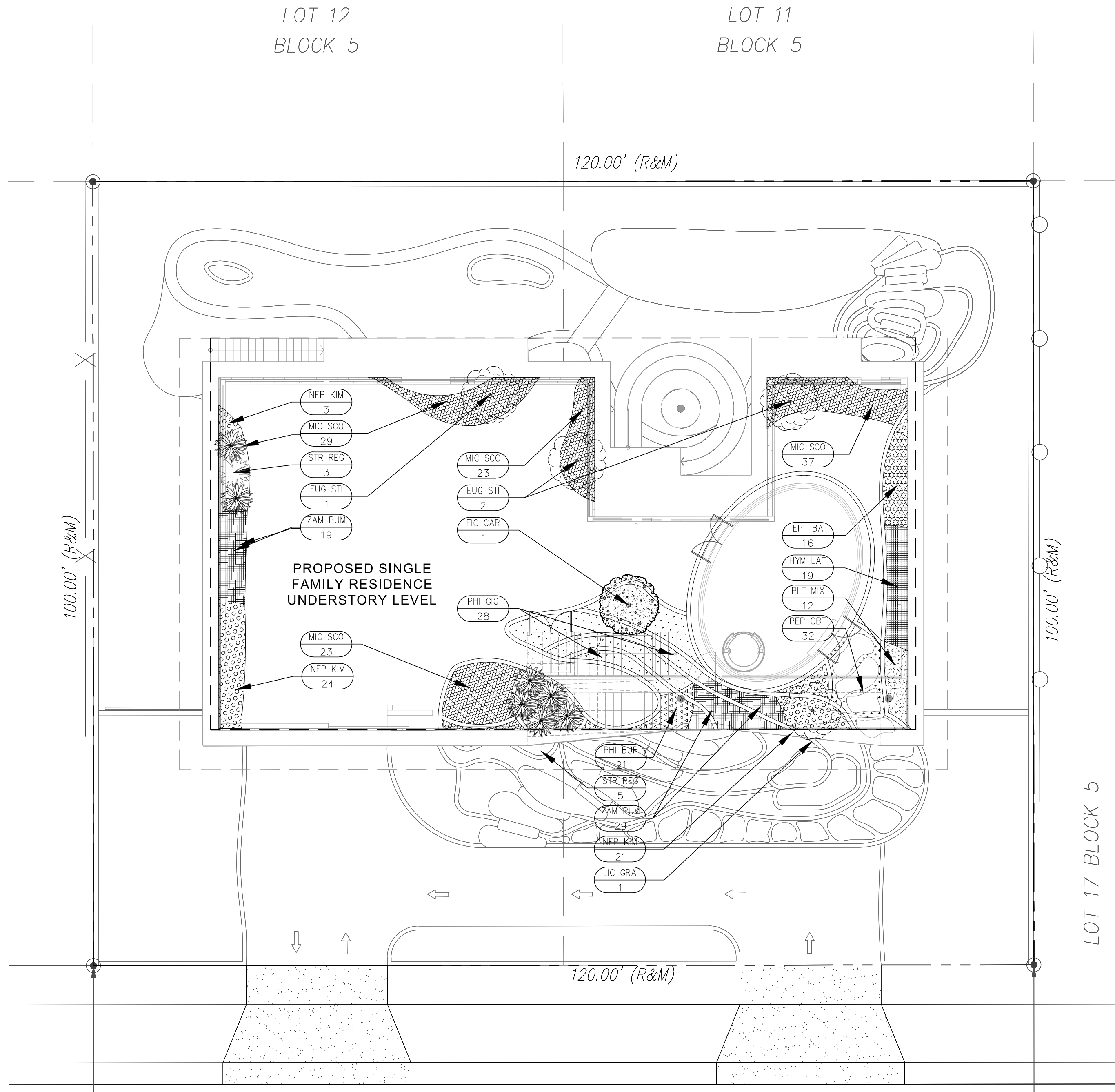
UNDERSTORY LEVEL PLANT LIST AND SPECIFICATIONS

SHRUBS AND SHRUB-LIKE						
SYM	QTY	LATIN NAME	COMMON NAME	SIZE	SPRD	DESCRIPTION
AES PAV	6	Aesculus pavia	RED BUCKEYE	36"	36"	FULL, PLACE WHERE SHOWN ON SCALED PLAN
CAN FLA	21	Canna flaccida	YELLOW CANNA	18"	18"	FULL, SPACE 18" TO COMPLETELY FILL SPACES
EPI SPP	22	Epidendrum speciosum	REED STEM ORCHID	18"	18"	FULL, SPACE 18" TO COMPLETELY FILL SPACES
*N EUG STI	4	Eugenia stipitata	ARAZA	6"	3"	SINGLE LEADER, THICK TRUNK, STAKED
*N FIC CAR	1	Ficus carica	EDIBLE FIG TREE	6"	3"	SINGLE LEADER, THICK TRUNK, STAKED
*N HYM LAT	19	Hymenocallis latifolia	SPIDER LILY	18"	18"	FULL, SPACE 18" TO COMPLETELY FILL SPACES
MIC SCO	112	Microsorium scolopendria	WART FERN	18"	18"	FULL, SPACE 18" TO COMPLETELY FILL SPACES
NEP KIM	48	Philodendron 'Kimberly Queen'	KIMBERLY QUEEN FERN	24"	24"	FULL, SPACE 24" TO COMPLETELY FILL SPACES
PHI BUR	21	Philodendron 'Burlie Marx'	BURLE MARX PHILODENDRON	18"	18"	FULL, SPACE 18" TO COMPLETELY FILL SPACES
PHI GIG	28	Philodendron giganteum	GIANT PHILODENDRON	30"	30"	FULL, SPACE 30" TO COMPLETELY FILL SPACES
PEP OBT	32	Peperomia obtusifolia	BABY RUBBER PLANT	6"	12"	FULL, SPACE 12" TO COMPLETELY FILL SPACES
STR REG	8	Strelitzia reginae	ORANGE BIRD OF PARADISE	42"	42"	FULL, 3 PPP, SPACE 36" ON CENTER TO FILL SPACES W/OVERLAP
*N ZAM PUM	29	Zamia pumila	COONTIE	18"	18"	FULL, SPACE 18" TO FILL SPACES

GROUND COVER PLANTING MIX						
SYM	QTY	LATIN NAME	COMMON NAME	SIZE	SPRD	DESCRIPTION
PLT MIX	38	Aquilegia canadensis	WILD COLUMBINE	18"	18"	FULL, SPACE 18" ON CENTER TO RANDOMLY FILL BEDS
PLT MIX	38	Coreopsis floridana	FLORIDA TICKSEED	18"	18"	FULL, SPACE 18" ON CENTER TO RANDOMLY FILL BEDS
PLT MIX	38	Dianella revoluta	FLAX LILY	18"	18"	FULL, SPACE 18" ON CENTER TO RANDOMLY FILL BEDS
PLT MIX	38	Dianella revoluta 'Baby Bliss'	BABY BLISS FLAX LILY	18"	18"	FULL, SPACE 18" ON CENTER TO RANDOMLY FILL BEDS
PLT MIX	38	Dipladania madenia 'Pink'	MANDEVILLA	18"	18"	FULL, SPACE 18" ON CENTER TO RANDOMLY FILL BEDS
PLT MIX	38	Erythrina herbacea	CORAL BEAN	18"	18"	FULL, SPACE 18" ON CENTER TO RANDOMLY FILL BEDS
PLT MIX	38	Gelsemium sempervirens	CAROLINA CREEPER	18"	18"	FULL, SPACE 18" ON CENTER TO RANDOMLY FILL BEDS
PLT MIX	38	Orthosiphon aristatus	CAT'S WHISKERS	18"	18"	FULL, SPACE 18" ON CENTER TO RANDOMLY FILL BEDS
PLT MIX	38	Pouteria campechiana	CANISTEL	18"	18"	FULL, SPACE 18" ON CENTER TO RANDOMLY FILL BEDS
PLT MIX	38	Rudbeckia hirta	BLACK-EYED SUSAN	18"	18"	FULL, SPACE 18" ON CENTER TO RANDOMLY FILL BEDS
PLT MIX	38	Ruellia brittonia 'Purple Showers'	RUPELLA BRITTONIA PURPLE SHOWERS	18"	18"	FULL, SPACE 18" ON CENTER TO RANDOMLY FILL BEDS
PLT MIX	38	Salvia coccinea	SCARLET SALVIA	18"	18"	FULL, SPACE 18" ON CENTER TO RANDOMLY FILL BEDS
PLT MIX	38	Salvia lyrata	PURPLE KNOCKOUT SAGE	18"	18"	FULL, SPACE 18" ON CENTER TO RANDOMLY FILL BEDS
PLT MIX	38	Stokesia laevis	STOKES ASTER	18"	18"	FULL, SPACE 18" ON CENTER TO RANDOMLY FILL BEDS
PLT MIX	38	Symphotrichum elliotii	ELLIOT'S ASTER	18"	18"	FULL, SPACE 18" ON CENTER TO RANDOMLY FILL BEDS

PLANTING NOTES & SPECIFICATIONS

- CONTRACTOR TO VISIT SITE AND REVIEW PLANS PRIOR TO SUBMITTING A PROPOSAL TO OWNER. CONTRACTOR SHALL VERIFY SITE AND TREE INFORMATION, AND BRING ANY AND ALL DISCREPANCIES, CONFLICTS, SHORTAGES, OR OTHER SCOPE/QUANTITY/TIME RELATED ISSUES, INCOMPLETENESS OR CONSISTENCY WITHIN THE PLANS TO THE ATTENTION OF THE LANDSCAPE ARCHITECT IMMEDIATELY FOR CLARIFICATION PRIOR TO SUBMITTING A PROPOSAL OR BASING A PROPOSAL ON THE SCOPE OF WORK.
- THESE PLANS WERE PREPARED BASED ON THE BEST INFORMATION AVAILABLE AT THE TIME OF DESIGN AND AS PROVIDED. ALL FINAL PLANS SHALL BE COORDINATED WITH FINAL APPROVED SITE PLAN.
- CONTRACTOR TO VERIFY ALL UNDERGROUND UTILITIES BEFORE WORK COMMENCES AND SHALL PROTECT ALL UNDERGROUND/ABOVE GROUND UTILITIES AND EXISTING CONDITIONS TO REMAIN DURING CONSTRUCTION.
- IF APPLICABLE, SEE TREE PROTECTION DETAIL ON LANDSCAPE DETAILS SHEET FOR TREE PROTECTION TO BE ERECTED BEFORE ANY CONSTRUCTION ACTIVITIES BEGIN FOR TREES AND PALMS TO REMAIN, AND TO REMAIN INTACT AS ERECTED UNTIL FINAL COMPLETION OF PROJECT.
- IN THE EVENT OF DISPUTE, THE LANDSCAPE ARCHITECT'S INTERPRETATION SHALL BE FINAL.
- ALL WORK TO BE IN ACCORDANCE WITH ALL APPLICABLE REGULATIONS AND ADJUST IF NECESSARY TO AVOID CONFLICTS OR SAFETY HAZARDS.
- ALL WORK TO BE PERFORMED IN A PROFESSIONAL, WORKMANLIKE MANNER AND ONLY DURING THOSE TIMES PERMITTED BY THE CITY OF HOLLYWOOD. PROTECT THE PUBLIC AND GENERAL PASSERSBY AT ALL TIMES AND PROTECT ALL TREES SPECIFIED TO REMAIN.
- ALL NEW PLANT MATERIAL SHALL BE FLORIDA NO. 1 OR BETTER ACCORDING TO 'GRADES AND STANDARDS FOR NURSERY PLANTS' PUBLICATION BY THE FLORIDA DEPT. OF AGRICULTURE AND CONSUMER SERVICES. ALL TREES OR PLANTS NOT MEETING THIS MINIMUM SPECIFICATION AS DEFINED IN THE PUBLICATION WILL BE REJECTED.
- ALL TREES AND PALMS MUST BE PLANTED SO THE TOP OF THE ROOT BALL, ROOT FLARE, AND FIRST ORDER ROOTS ARE SLIGHTLY ABOVE THE FINAL GRADE (ADVENTITIOUS ROOTS ARE NOT CONSIDERED FIRST ORDER ROOTS).
- ALL SYNTHETIC BURLAP, SYNTHETIC STRING, CORDS OR OTHER NONBIODEGRADABLE MATERIALS SHALL BE COMPLETELY REMOVED IN THEIR ENTIRETY FROM THE ROOTBALLS BEFORE ANY TREES ARE PLANTED.
- FOR BIODEGRADABLE BURLAP ROOTBALL CONTAINMENT THE TOP PORTION OF BURLAP MUST BE REMOVED FROM THE TOP OF THE ROOTBALLS. THE TOP 1/3RD OF WIRE BASKETS SHALL BE REMOVED. THE BOTTOM 2/3RDS SHALL BE CUT BEFORE THE TREES ARE INSTALLED.
- ALL SYNTHETIC TAPE (I.E. TAGGING TAPE, NURSERY TAPE) SHALL BE REMOVED FROM TRUNKS, BRANCHED, ETC. BEFORE INSPECTION REMOVE ALL BAMBOO AND METAL STAKES FROM THE TREES.
- TREES SHALL HAVE A MULCH RING WITH A MINIMUM DIAMETER OF 4'. MULCH WILL BE A GRADE B SHREDDED WOOD HARVESTED FROM EXISTING MELALEUCA OR EUCALYPTUS STANDS (STERILIZED TO DESTROY ANY SEEDS) OVER HEAVY WEED BARRIER FABRIC, SECURED IN PLACE USING METAL SOD STAPLES, AND APPROXIMATELY 3" DEPTH WHEN SETTLED. USE COMMERCIAL GRADE BLACK PLASTIC EDGING FOR SHAPE AND CONTAINMENT OF SHRUB & GROUND COVER LANDSCAPE PLANTING AREAS, STAKED IN PLACE.
- ALL TREES AND PALMS SHALL BE GUYED WITH PROPER HORTICULTURAL AND ARBORICULTURAL TECHNIQUES. DO NOT USE WIRE, BLACK STRAPPING, OR OTHER SYNTHETIC MATERIAL FOR THE DIRECT STAKING OF TREES. PLEASE USE BIODEGRADABLE MATERIAL FOR STAKING DIRECTLY AROUND TRUNKS SUCH AS SISAL TWINE. NAILING INTO TREES AND PALMS FOR ANY REASON IS PROHIBITED. ALL STAKING MATERIAL SHALL BE REMOVED ONCE TREES ARE ESTABLISHED.
- ALL PERVIOUS LANDSCAPED AREAS SHALL RECEIVE 100% IRRIGATION COVERAGE, AS DEFINED BY CITY OF HOLLYWOOD, SFWMD AND INDUSTRY STANDARDS (BEING HEAD-TO-HEAD ARC THROW WITH 50% OVERLAP), BY MEANS OF AN AUTOMATIC, FULLY PROGRAMMABLE UNDERGROUND IRRIGATION SYSTEM UTILIZING PVC PIPE, RAIRBIRD 1800 SERIES POP-UP SPRAY TYPE HEADS REMOTE ELECTRONIC ZONE VALVES, A PROGRAMMABLE AUTOMATIC CONTROLLER WITH INTEGRATED RAIN SENSOR, BACKFLOW PREVENTION DEVICE, SCHEDULE B PVC SLEEVES FOR PIPING BENEATH PAVEMENT, ETC.. ADDITIONALLY, ALL NEWLY PLANTED TREES AND PALMS WILL RECEIVE A MINIMUM OF ONE (1) BUBBLER NOZZLE TO WATER THE ROOT SYSTEMS FOR ESTABLISHMENT. ADJUST SET SCREW TO EMIT NO MORE THAN 25 GPM FLOW EACH. THIS PLAN IS NOT COMPLETE WITHOUT IRRIGATION PLAN AND IRRIGATION DETAILS SHEETS L-300 AND L-301. IRRIGATION CONTRACTOR TO INSURE THAT FINAL SYSTEM AND ANY REQUIRED ADJUSTMENTS PROVIDE 100% COVERAGE AND ADDITIONAL ZONES OR HEADS MAY NEED TO BE ADDED TO ACHIEVE THIS. ALL WORK SHALL COMPLY WITH MUNICIPAL AND COUNTY ORDINANCES, SFWMD REGULATIONS AND RESTRICTIONS AND THE STATE OF FLORIDA.
- FOLLOW APPROVED LANDSCAPE PLANS FOR SPECIES, SIZES, LOCATIONS, QUANTITIES, QUALITY, ETC. IF CONTRACTOR IS UNABLE TO LOCATE PLANT MATERIAL AT REQUIRED SPECIFICATIONS CONTACT THE LANDSCAPE ARCHITECT PRIOR TO ANY CHANGES OR SUBSTITUTIONS BEING ASSUMED, ORDERED, OR MADE.
- PLANT LIST IS PROVIDED FOR CONVENIENCE ONLY. IF DISCREPANCIES EXIST BETWEEN PLANT TABLE AND PLAN, PLAN DRAWINGS AND ON-CENTER SPACING SHALL TAKE PRECEDENCE.
- ALL MATERIALS AND WORKMANSHIP WILL BE GUARANTEED FOR A PERIOD OF ONE YEAR AFTER FINAL ACCEPTANCE FROM FAILURE, DEATH, TERMINAL DECLINE, ETC.. THE WARRANTY PERIOD MAY BE EXTENDED BEYOND THAT TIMEFRAME IF, AT THE END OF ONE YEAR, ANY PLANTS ARE NOT IN A THRIVING STATE, INDICATIVE OF HEALTHY PLANTS OF EACH SPECIES.
- BEGIN WATERING ALL PLANT MATERIALS IMMEDIATELY AFTER INSTALLATION OR RELOCATION. FOR RELOCATIONS SEE CARE AND WATERING SCHEDULE ABOVE. FOR ALL NEW PLANTS, WATER ACCORDING TO SFWMD, BROWARD COUNTY AND CITY OF HOLLYWOOD REGULATIONS FOR NEW LANDSCAPE INSTALLATIONS UP TO 90 DAYS AND BEGIN PHASE II WATER RESTRICTION SCHEDULE FOLLOWING THAT. A SUMMARY IS: LANDSCAPING FROM 9-30 DAYS AFTER INSTALLATION WATERING CAN OCCUR ON ALL DAYS EXCEPT ON FRIDAYS. FROM 30-90 DAYS, WATERING FOR NEW LANDSCAPING CAN OCCUR ON MONDAY, WEDNESDAY, THURSDAY, AND SATURDAY. FOR BOTH ESTABLISHMENT WATERING PERIODS AND FINAL ESTABLISHED PERIOD, NO WATERING SHALL OCCUR BETWEEN 10 A.M. IN THE MORNING AND 4 P.M. IN THE AFTERNOON.
- ALL WORK WITHIN THESE PLANS TO BE DONE IN A SOUND, WORKMANLIKE MANNER, INDICATIVE OF THE PROFESSIONAL STANDARDS REGULATING EACH DISCIPLINE AND THE PERTINENT DIVISION OF THE CONSTRUCTION SPECIFICATIONS INSTITUTE, THE CITY OF HOLLYWOOD, AND ANY OTHER REGULATING OR GOVERNING AUTHORITY. WORK WILL ONLY OCCUR WITHIN THE DAYS AND HOURS SPECIFIED WITHIN THE CODE OF ORDINANCES AND CONTRACTORS AND SUB-CONTRACTORS SHALL PERFORM WORK IN A SAFE, PROFESSIONAL MANNER WITHOUT UNNECESSARY DISTURBANCE TO THE SURROUNDING COMMUNITY, OTHER ON-SITE WORKERS OR PASSERSBY.
- ANY DAMAGE TO EXISTING CONDITIONS INCLUDING EXISTING LAWN AREA WILL BE RESTORED TO A CONDITION EQUAL TO OR EXCEEDING THE CONDITION AT TIME OF WORK COMMENCEMENT. EXISTING LAWN REPAIR WILL BE DONE COMPLETE FOR ANY AND ALL DAMAGED AREAS BY WORK. THIS INCLUDES MATCHING OF EXISTING GRASS SPECIES WITH WHOLE, CERTIFIED SOD LAID OVER 2" BLANKET OF HAND-RAKED, FINELY-GRADED TOPSOIL AFTER ANY NECESSARY EXCAVATION REQUIRED SO THAT NEW SOD MATCHES EXISTING OR PREVIOUS SOD IN APPEARANCE, ELEVATION, EXTENT, WITH CLEAN AND TIGHT JOINTS AND CUT IN PROPERLY SO THAT NEW AND EXISTING EDGES MEET SEAMLESSLY. STAGGER JOINTS OF ALL NEW SOD. SPECIES SHALL BE ST. AUGUSTINE FLORATAM VARIETY CERTIFIED TRUE TO NOMENCLATURE BY THE SUPPLIER ON RECEIPT. IF EXISTING PLANTING BEDS ARE DAMAGED, RESTORE TO SAME CONDITION WITH SAME MATERIALS.
- ANY REFERENCE, MENTION OR INFERENCE OF 'PLANTING SOIL', 'AMENDED SOIL', 'SOIL MIX' OR THE LIKE SHALL MEAN A SPECIFIC SOIL MIX AS FOLLOWS: 50-50 PERCENTAGE BY VOLUME RATIO, PRE-MIXED OFF SITE, AND COMPRISED OF 50% CLEAN, SCREENED SILICA SAND, AND 50% VERMID FLORIDA MUCK, ALSO REFERRED TO AS TOPSOIL, FREE FROM ANY WEEDS, NEMATODES, SEEDS, AGGREGATE (OTHER THAN SPECIFIED SAND) OR OTHER DETERIOROUS MATERIALS AND PREPARED SPECIFICALLY FOR USE AS A SOIL AMENDMENT IN LANDSCAPING APPLICATIONS. AN AMENDED ORGANIC OF COW MANURE OR ORGANIC PEAT IS ACCEPTABLE UP TO 10% OF THE TOTAL VOLUME OF THE MIX.
- CONTRACTOR SHALL SECURE ALL NECESSARY PERMITS PRIOR TO COMMENCING WORK BASED ON THESE PLANS.
- ALL BEDLINES FOR SHRUBS AND GROUND COVER TO HAVE FLOWING ARCS AS SHOWN CREATING AN ATTRACTIVE, ORGANIC AESTHETIC. MULCHED BEDLINE EDGES WITH FLAT OR 'DEAD' AREAS THAT BREAK FROM THE CURVILINEAR NATURE WILL BE REJECTED.
- UNLESS OTHERWISE NOTED, ALL PERVIOUS AREAS NOT COVERED WITH TREES, SHRUBS, OR GROUND COVER SHALL BE PLANTED WITH SOD GRASS. ALL SOD SHALL BE WHOLE SOD SQUARE PIECES, CERTIFIED TO SPECIES AND CULTIVAR, LAID OVER 2" BLANKET OF HAND-RAKED, FINELY-GRADED TOPSOIL AFTER ANY NECESSARY EXCAVATION REQUIRED SO THAT NEW SOD MATCHES EXISTING ELEVATIONS OF CURBS, WALKS AND OTHER SURROUNDING HARDSCAPE PAVEMENT. SOD SHALL BE LAID WITH TIGHT JOINTS, STAGGER JOINTS ONE WAY SO THAT EDGES MEET SEAMLESSLY WITH NO GAPS GREATER THAN 1/2" IN WIDTH. USE COARSE CONCRETE SAND TO FILL ANY JOINTS. WHERE SOD IS INDICATED SPECIES SHALL BE ST. AUGUSTINE FLORATAM VARIETY. BAHIA GRASS SOD SHALL BE ARGENT VARIETY BAHIA SOD.
- SPECIES SUBJECT TO AVAILABILITY AT TIME OF INSTALLATION IN THE REQUIRED.
- ANY ROOTS OVER 1-1/2" DIAMETER OF TREES AND PALMS TO REMAIN IN CONFLICT WITH BUILDING OR SLAB FOUNDATIONS TO BE EXCAVATED AND ROOT PRUNED WITH A CLEAN, SHARP ROOT PRUNING TOOL IN ACCORDANCE WITH ANSI A300 STANDARDS.
- CONTRACTOR TO OBTAIN ALL NECESSARY PERMITS PRIOR TO COMMENCEMENT OF WORK.



ALTON ROAD

UNDERSTORY LEVEL INTERIOR LANDSCAPE PLANTING PLAN

SCALE: 1" = 10'

This document, together with the concepts and designs presented herein, as an instrument of service, is intended only for the specific purpose and client for which it was prepared. Reuse of and improper reliance on this document without written authorization and adaptation by Green Earth Landscape Architects shall be without liability to Green Earth Landscape Architects, LLC.

LICENSED PROFESSIONAL
William Dale Bryant
 FLORIDA LICENSE NUMBER
LA6666943

PROJECT #
23-105
 DATE
09-11-23
 SCALE AS NOTED
 DESIGNED BY WDB
 DRAWN BY WDB
 CHECKED BY WDB

FLORIDA
HOUSE OF KIRSCHNER
4410 Alton Road
Miami Beach, FL

GREEN EARTH
 LANDSCAPE ARCHITECTURE, LLC
 WILTON MANORS, FLORIDA
 PHONE: 954-418-1925

LANDSCAPE PLANTING
PLAN INTERIOR
UNDERSTORY LEVEL

SHEET NUMBER
L-201

This document, together with the concepts and designs presented herein, is an instrument of service, and its preparation, use and improvement are intended only for the specific purpose and client for which it was prepared. Reuse of and improper reliance on this document without written authorization and adaptation by Green Earth Landscape Architecture, shall be without liability to Green Earth Landscape Architecture, LLC.

GROUND LEVEL LANDSCAPE TABULAR DATA CODE CHART

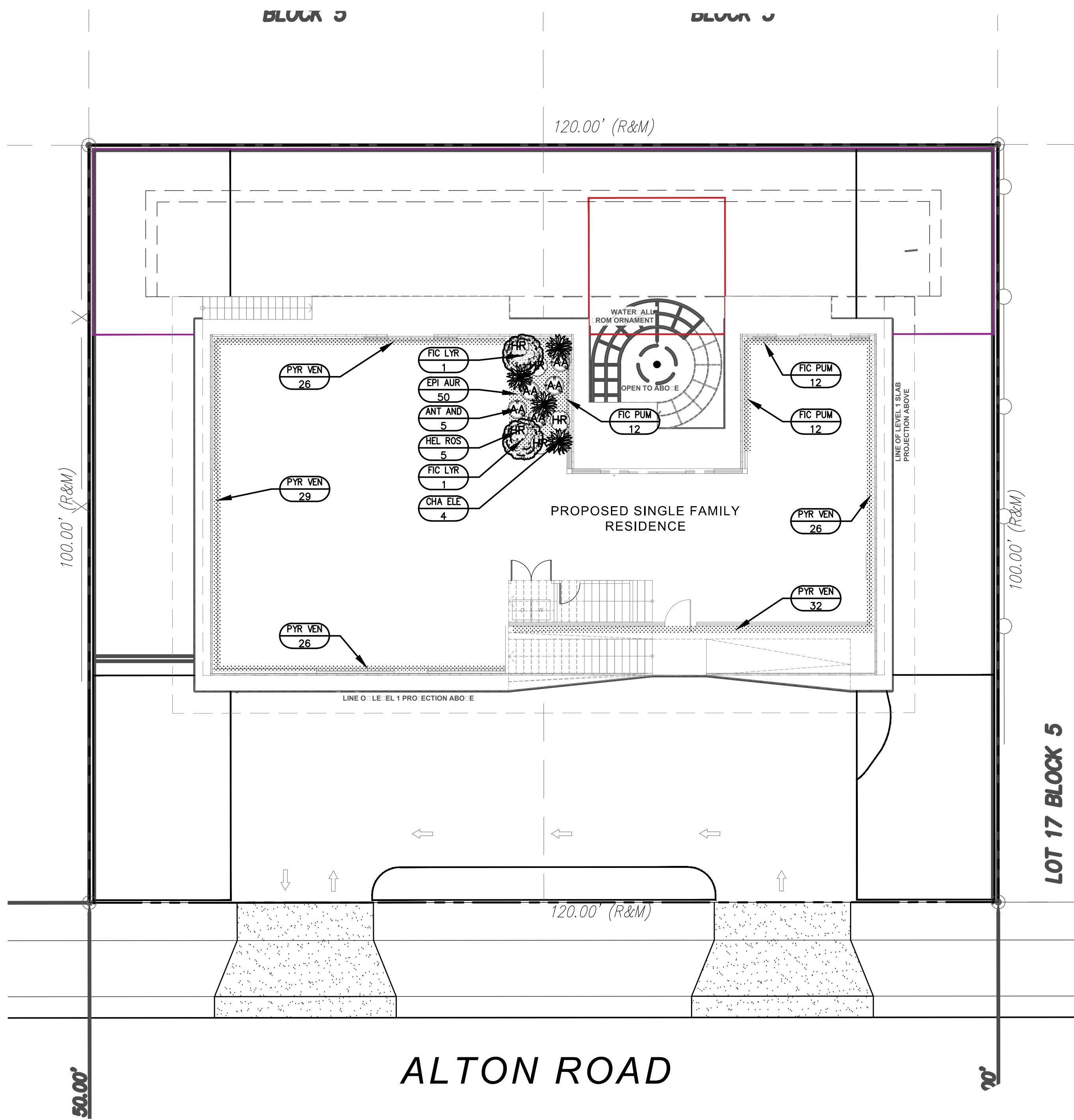
REGULATING DOCUMENT: CITY OF MIAMI BEACH CHAPTER 126 - LANDSCAPE REQUIREMENTS		
SITE AREA: 12,000 SF (.28 ACRES)		
ZONING/LAND USE: RS-4	REQUIRED	PROVIDED
SEC. 126 (a)(1) - STREET TREE SIZE AND SPACING 1 TREE/20LF STREET FRONTAGE @ 84 LF	5 TREES	5 TREES
SEC. 126 (b)(4) - MAXIMUM LAWN GRASS/SOD AREAS 50% @ 12,000 SF	6,000 SF	4,235 SF
SEC. 126 (c) - MINIMUM NUMBER OF TREES FRONT YARD 2 (+ 6 FOR ADD'L LOT SF) = 8 TREES BACK YARD 3 (+ 6 FOR ADD'L LOT SF) = 9 TREES	8 TREES 9 TREES	10 TREES 11 TREES
SEC. 126 (d) - SHRUBS 12 SHRUBS PER TOTAL REQUIRED TREES	264 SHRUBS	314 SHRUBS
NATIVE/DROUGHT TOLERANT SPECIES REQUIREMENTS		
TREES	50%	100%
SHRUBS	60%	62% OF REQ'D SHRUBS

LEVEL 2 PLANT LIST AND SPECIFICATIONS

UPRIGHT SPECIMEN AND PALMS					
SYMBOL	QTY	LATIN NAME	COMMON NAME	SIZE	DESCRIPTION
ANT AND	5	Anthurium andraeanum	RED FLOWERING ANTHURIUM	30" X 30"	FULL, SPECIMEN, SHADE GROWN, SPACE PER PLAN
CHA ELE	4	Chamaedorea elegans	PARLOR/NEANTHE BELLA PALM	5' OA. HT.	FULL, SPECIMEN, SHADE GROWN, SPACE PER PLAN
FIC LYR	2	Ficus lyrata	FIDDLELEAF FIG	6' OA. HT.	FULL, SPECIMEN, SHADE GROWN, SPACE PER PLAN
HEL ROS	5	Heliconia rostrata 'Lobster Claw'	LOBSTER CLAW HELICONIA	4' OA. HT.	FULL, SPECIMEN, SHADE GROWN, SPACE PER PLAN
LOW SPECIMEN AND SPREADING					
SYMBOL	QTY	LATIN NAME	COMMON NAME	SIZE	DESCRIPTION
EPI AUR	212	Epepernum aureum	GOLDEN POTHOS VINE	4" X 18"	FULL, SPACE 24" ON CENTER, SHADE GROWN
FIC PUM	212	Ficus pumila	CREEPER FIG	4" X 18"	FULL, SPACE 18" ON CENTER
PYR VEN	212	Pyrostegia venusta	FLAME VINE	4" X 18"	FULL, SPACE 24" ON CENTER, SHADE GROWN

PLANTING NOTES & SPECIFICATIONS

- CONTRACTOR TO VISIT SITE AND REVIEW PLANS PRIOR TO SUBMITTING A PROPOSAL TO OWNER. CONTRACTOR SHALL VERIFY SITE AND TREE INFORMATION, AND BRING ANY AND ALL DISCREPANCIES, CONFLICTS, SHORTAGES, OR OTHER SCOPE/QUANTITY/ TIME RELATED ISSUES, INCOMPLETENESS OR CONSISTENCY WITHIN THE PLANS TO THE ATTENTION OF THE LANDSCAPE ARCHITECT IMMEDIATELY FOR CLARIFICATION PRIOR TO SUBMITTING A PROPOSAL OR BASING A PROPOSAL ON THE SCOPE OF WORK.
- THESE PLANS WERE PREPARED BASED ON THE BEST INFORMATION AVAILABLE AT THE TIME OF DESIGN AND AS PROVIDED. ALL FINAL PLANS SHALL BE COORDINATED WITH FINAL APPROVED SITE PLAN.
- CONTRACTOR TO VERIFY ALL UNDERGROUND UTILITIES BEFORE WORK COMMENCES AND SHALL PROTECT ALL UNDERGROUND/ABOVE GROUND UTILITIES AND EXISTING CONDITIONS-TO-REMAIN DURING CONSTRUCTION.
- IF APPLICABLE, SEE TREE PROTECTION DETAIL ON LANDSCAPE DETAILS SHEET FOR TREE PROTECTION TO BE ERECTED BEFORE ANY CONSTRUCTION ACTIVITIES BEGIN FOR TREES AND PALMS TO REMAIN, AND TO REMAIN INTACT AS ERECTED UNTIL FINAL COMPLETION OF PROJECT.
- IN THE EVENT OF DISPUTE, THE LANDSCAPE ARCHITECT'S INTERPRETATION SHALL BE FINAL.
- ALL WORK TO BE IN ACCORDANCE WITH ALL APPLICABLE REGULATIONS AND ADJUST IF NECESSARY TO AVOID CONFLICTS OR SAFETY HAZARDS.
- ALL WORK TO BE PERFORMED IN A PROFESSIONAL, WORKMANLIKE MANNER AND ONLY DURING THOSE TIMES PERMITTED BY THE CITY OF HOLLYWOOD. PROTECT THE PUBLIC AND GENERAL PASSERSBY AT ALL TIMES AND PROTECT ALL TREES SPECIFIED TO REMAIN.
- ALL NEW PLANT MATERIAL SHALL BE FLORIDA NO. 1 OR BETTER ACCORDING TO "GRADES AND STANDARDS FOR NURSERY PLANTS" PUBLICATION BY THE FLORIDA DEPT. OF AGRICULTURE AND CONSUMER SERVICES. ALL TREES OR PLANTS NOT MEETING THIS MINIMUM SPECIFICATION AS DEFINED IN THE PUBLICATION WILL BE REJECTED.
- ALL TREES AND PALMS MUST BE PLANTED SO THE TOP OF THE ROOT BALL, ROOT FLARE, AND FIRST ORDER ROOTS ARE SLIGHTLY ABOVE THE FINAL GRADE (ADVENTITIOUS ROOTS ARE NOT CONSIDERED FIRST ORDER ROOTS).
- ALL SYNTHETIC BURLAP, SYNTHETIC STRING, CORDS OR OTHER NON-BIODEGRADABLE MATERIALS SHALL BE **COMPLETELY REMOVED IN THEIR ENTIRETY** FROM THE ROOTBALLS BEFORE ANY TREES ARE PLANTED.
- FOR BIODEGRADABLE BURLAP ROOTBALL CONTAINMENT THE TOP PORTION OF BURLAP MUST BE REMOVED FROM THE TOP OF THE ROOTBALLS. THE TOP 1/3RD OF WIRE BASKETS SHALL BE REMOVED, THE BOTTOM 2/3RDS SHALL BE CUT BEFORE THE TREES ARE INSTALLED.
- ALL SYNTHETIC TAPE (I.E., TAGGING TAPE, NURSERY TAPE) SHALL BE REMOVED FROM TRUNKS, BRANCHED, ETC. BEFORE INSPECTION. REMOVE ALL BAMBOO AND METAL STAKES FROM THE TREES.
- TREES SHALL HAVE A MULCH RING WITH A MINIMUM DIAMETER OF 4'. MULCH WILL BE A GRADE B SHREDDED WOOD HARVESTED FROM EXISTING MELALEUCA OR EUCALYPTUS STANDS (STERILIZED TO DESTROY ANY SEEDS) OVER HEAVY WEED BARRIER FABRIC, SECURED IN PLACE USING METAL SOD STAPLES, AND APPROXIMATELY 3" DEPTH WHEN SETTLED. USE COMMERCIAL GRADE BLACK PLASTIC EDGING FOR SHAPE AND CONTAINMENT OF SHRUB & GROUND COVER LANDSCAPE PLANTING AREAS, STAKED IN PLACE.
- ALL TREES AND PALMS SHALL BE GUYED WITH PROPER HORTICULTURAL AND ARBORICULTURAL TECHNIQUES. DO NOT USE WIRE, BLACK STRAPPING, OR OTHER SYNTHETIC MATERIAL FOR THE DIRECT STAKING OF TREES. PLEASE USE BIODEGRADABLE MATERIAL FOR STAKING DIRECTLY AROUND TRUNKS SUCH AS SISAL TWINE. NAILING INTO TREES AND PALMS FOR ANY REASON IS PROHIBITED. ALL STAKING MATERIAL SHALL BE REMOVED ONCE TREES ARE ESTABLISHED.
- ALL PERVIOUS LAWN AREAS SHALL RECEIVE 100% IRRIGATION COVERAGE, AS DEFINED BY CITY OF HOLLYWOOD, SFWMD AND INDUSTRY STANDARDS (BEING HEAD-TO-HEAD ARC THROW WITH 50% OVERLAP), BY MEANS OF AN AUTOMATIC, FULLY PROGRAMMABLE UNDERGROUND IRRIGATION SYSTEM UTILIZING PVC PIPE, RAINBIRD 1800 SERIES POP-UP SPRAY TYPE HEADS, REMOTE ELECTRONIC ZONE VALVES, A PROGRAMMABLE AUTOMATIC CONTROLLER WITH INTEGRATED RAIN SENSOR, BACKFLOW PREVENTION DEVICE, SCHEDULE 80 PVC SLEEVES FOR PIPING BENEATH PAVEMENT, ETC.. ADDITIONALLY, ALL NEWLY PLANTED TREES AND PALMS WILL RECEIVE A MINIMUM OF ONE (1) SUBIRRIGATOR NOZZLE TO WATER THE ROOT SYSTEMS FOR ESTABLISHMENT. ADJUST SET SCREW TO EMIT NO MORE THAN 25 GPM FLOW EACH. THIS PLAN IS NOT COMPLETE WITHOUT IRRIGATION PLAN AND IRRIGATION DETAILS SHEETS L-300 AND L-301. IRRIGATION CONTRACTOR TO INSURE THAT FINAL SYSTEM AND ANY REQUIRED ADJUSTMENTS PROVIDE 100% COVERAGE AND ADDITIONAL ZONES OR HEADS MAY NEED TO BE ADDED TO ACHIEVE THIS. ALL WORK SHALL COMPLY WITH MUNICIPAL AND COUNTY ORDINANCES, SFWMD REGULATIONS AND RESTRICTIONS AND THE STATE OF FLORIDA.
- FOLLOW APPROVED LANDSCAPE PLANS FOR SPECIES, SIZES, LOCATIONS, QUANTITIES, QUALITY, ETC. IF CONTRACTOR IS UNABLE TO LOCATE PLANT MATERIAL AT REQUIRED SPECIFICATIONS CONTACT THE LANDSCAPE ARCHITECT PRIOR TO ANY CHANGES OR SUBSTITUTIONS BEING ASSUMED, ORDERED, OR MADE.
- PLANT LIST IS PROVIDED FOR CONVENIENCE ONLY. IF DISCREPANCIES EXIST BETWEEN PLANT TABLE AND PLAN, PLAN DRAWING AND ON-CENTER SPACING SHALL TAKE PRECEDENCE.
- ALL TREES ARE TO HAVE PROTECTIVE LAYER OF BURLAP OR SIMILAR HEAVY WOVEN PROTECTIVE FABRIC AROUND THE TRUNKS WHEN LOADING AND UNLOADING WITH MACHINE EQUIPMENT. NO SCARRING OF TRUNKS WILL BE ACCEPTED AND MATERIALS THAT ARE SCARRED WILL BE REJECTED.
- ALL MATERIALS AND WORKMANSHIP WILL BE GUARANTEED FOR A PERIOD OF ONE YEAR AFTER FINAL ACCEPTANCE FROM FAILURE, DEATH, TERMINAL DECLINE, ETC.. THE WARRANTY PERIOD MAY BE EXTENDED BEYOND THAT TIMEFRAME IF, AT THE END OF ONE YEAR, ANY PLANTS ARE NOT IN A THRIVING STATE, INDICATIVE OF HEALTHY PLANTS OF EACH SPECIES.
- BEGIN WATERING ALL PLANT MATERIALS IMMEDIATELY AFTER INSTALLATION OR RELOCATION. FOR RELOCATIONS SEE CARE AND WATERING SCHEDULE ABOVE. FOR ALL NEW PLANTS, WATER ACCORDING TO SFWMD, BROWARD COUNTY AND CITY OF HOLLYWOOD REGULATIONS FOR NEW LANDSCAPE INSTALLATIONS UP TO 90 DAYS AND BEGIN PHASE II WATER RESTRICTION SCHEDULE FOLLOWING THAT. A SUMMARY IS: LANDSCAPING FROM 0-30 DAYS AFTER INSTALLATION WATERING CAN OCCUR ON ALL DAYS EXCEPT ON FRIDAYS. FROM 30-90 DAYS, WATERING FOR NEW LANDSCAPING CAN OCCUR ON MONDAY, WEDNESDAY, THURSDAY, AND SATURDAY. FOR BOTH ESTABLISHMENT WATERING PERIODS AND FINAL ESTABLISHED PERIOD, NO WATERING SHALL OCCUR BETWEEN 10 A.M. IN THE MORNING AND 4 P.M. IN THE AFTERNOON.
- ALL WORK WITHIN THESE PLANS TO BE DONE IN A SOUND, WORKMANLIKE MANNER, INDICATIVE OF THE PROFESSIONAL STANDARDS REGULATING EACH DISCIPLINE AND THE PERTINENT DIVISION OF THE CONSTRUCTION SPECIFICATIONS INSTITUTE, THE CITY OF HOLLYWOOD, AND ANY OTHER REGULATING OR GOVERNING AUTHORITY. WORK WILL ONLY OCCUR WITHIN THE DAYS AND HOURS SPECIFIED WITHIN THE CODE OF ORDINANCES AND CONTRACTORS AND SUB-CONTRACTORS SHALL PERFORM WORK IN A SAFE, PROFESSIONAL MANNER WITHOUT UNNECESSARY DISTURBANCE TO THE SURROUNDING COMMUNITY, OTHER ON-SITE WORKERS OR PASSERSBY.
- ANY DAMAGE TO EXISTING CONDITIONS INCLUDING EXISTING LAWN AREA WILL BE RESTORED TO A CONDITION EQUAL TO OR EXCEEDING THE CONDITION AT TIME OF WORK COMMENCEMENT. EXISTING LAWN REPAIR WILL BE DONE COMPLETE FOR ANY AND ALL DAMAGED AREAS AFFECTED BY WORK. THIS INCLUDES MATCHING OF EXISTING GRASS SPECIES WITH WHOLE, CERTIFIED SOD LAID OVER 2" BLANKET OF HAND-RAKED, FINELY-GRADED TOPSOIL AFTER ANY NECESSARY EXCAVATION REQUIRED SO THAT NEW SOD MATCHES EXISTING OR PREVIOUS SOD IN APPEARANCE, ELEVATION, EXTENT, WITH CLEAN AND TIGHT JOINTS AND CUT IN PROPERLY SO THAT NEW AND EXISTING EDGES MEET SEAMLESSLY. STAGGER JOINTS OF ALL NEW SOD. SPECIES SHALL BE ST. AUGUSTINE 'FLORATAM' VARIETY CERTIFIED TRUE TO NOMENCLATURE BY THE SUPPLIER ON RECEIPT. IF EXISTING PLANTING BEDS ARE DAMAGED, RESTORE TO SAME CONDITION WITH SAME MATERIALS.
- ANY REFERENCE, MENTION OR INFERENCE OF 'PLANTING SOIL', 'AMENDED SOIL', 'SOIL MIX' OR THE LIKE SHALL MEAN A SPECIFIC SOIL MIX AS FOLLOWS: 50-50 PERCENTAGE-BY-VOLUME RATIO, PRE-MIXED OFF SITE, AND COMPRISED OF 50% CLEAN, SCREENED SILICA SAND, AND 50% PULVERIZED FLORIDA MUCK. ALSO REFERRED TO AS TOPSOIL, FREE FROM ANY WEEDS, NEMATODES, SEEDS, AGGREGATE (OTHER THAN SPECIFIED SAND) OR OTHER DELETERIOUS MATERIALS AND PREPARED SPECIFICALLY FOR USE AS A SOIL AMENDMENT IN LANDSCAPING APPLICATIONS. AN AMENDED ORGANIC OF COW MANURE OR ORGANIC PEAT IS ACCEPTABLE UP TO 10% OF THE TOTAL VOLUME OF THE MIX.
- CONTRACTOR SHALL SECURE ALL NECESSARY PERMITS PRIOR TO COMMENCING WORK BASED ON THESE PLANS.
- ALL BEDLINES FOR SHRUBS AND GROUND COVER TO HAVE FLOWING ARCS AS SHOWN CREATING AN ATTRACTIVE, ORGANIC AESTHETIC. MULCHED BEDLINE EDGES WITH FLAT OR 'DEAD' AREAS THAT BREAK FROM THE CURVILINEAR NATURE WILL BE REJECTED.
- UNLESS OTHERWISE NOTED, ALL PERVIOUS AREAS NOT COVERED WITH TREES, SHRUBS, OR GROUND COVER SHALL BE PLANTED WITH SOD GRASS. ALL SOD SHALL BE WHOLE SOLID SQUARE PIECES, CERTIFIED TO SPECIES AND CULTIVAR, LAID OVER 2" BLANKET OF HAND-RAKED, FINELY-GRADED TOPSOIL AFTER ANY NECESSARY EXCAVATION REQUIRED SO THAT NEW SOD MATCHES EXISTING ELEVATIONS OF CURBS, WALKS AND OTHER SURROUNDING HARDSCAPE PAVEMENT. SOD SHALL BE LAID WITH TIGHT JOINTS. STAGGER JOINTS ONE WAY SO THAT EDGES MEET SEAMLESSLY WITH NO GAPS GREATER THAN 1/4" IN WIDTH. USE COARSE CONCRETE SAND TO FILL ANY JOINTS. WHERE 'SOD' IS INDICATED SPECIES SHALL BE ST. AUGUSTINE 'FLORATAM' VARIETY AND BAHIA GRASS SOD SHALL BE ARGENTINE VARIETY BAHIA SOD.
- ALL AREAS BENEATH BUILDING STRUCTURE AND BEHIND WALLS TO HAVE ORNAMENTAL WHITE MARBLE CHIP AGGREGATE MULCH OVER 6 MIL BLACK PLASTIC STAPLED IN PLACE.
- SPECIES SUBJECT TO AVAILABILITY AT TIME OF INSTALLATION IN THE REQUIRED.
- ANY ROOTS OVER 1-1/2" DIAMETER OF TREES AND PALMS TO REMAIN IN CONFLICT WITH BUILDING OR SLAB FOUNDATIONS TO BE EXCAVATED AND ROOT PRUNED WITH A CLEAN, SHARP ROOT PRUNING TOOL IN ACCORDANCE WITH ANSI A300 STANDARDS.
- CONTRACTOR TO OBTAIN ALL NECESSARY PERMITS PRIOR TO COMMENCEMENT OF WORK.



LEVEL 2 INTERIOR LANDSCAPE PLANTING PLAN

SCALE: 1" = 10'

LICENSED PROFESSIONAL
William Dale Bryant
FL LICENSE NUMBER
LA666943

No.	REVISIONS	DATE

PROJECT # 23-105	DATE 09-11-23
SCALE AS NOTED	DESIGNED BY WDB
DRAWN BY WDB	CHECKED BY WDB

HOUSE OF KIRSCHNER
4410 Alton Road
Miami Beach, FL
MIAMI-DADE COUNTY, FLORIDA

GREEN EARTH
LANDSCAPE ARCHITECTURE, LLC
WILTON MANORS, FLORIDA
EMAIL: dale.bryant@greenearth.com PHONE: 954-438-1925

LANDSCAPE PLANTING
PLAN INTERIOR LEVEL 2

SHEET NUMBER
L-202

GROUND LEVEL LANDSCAPE TABULAR DATA CODE CHART

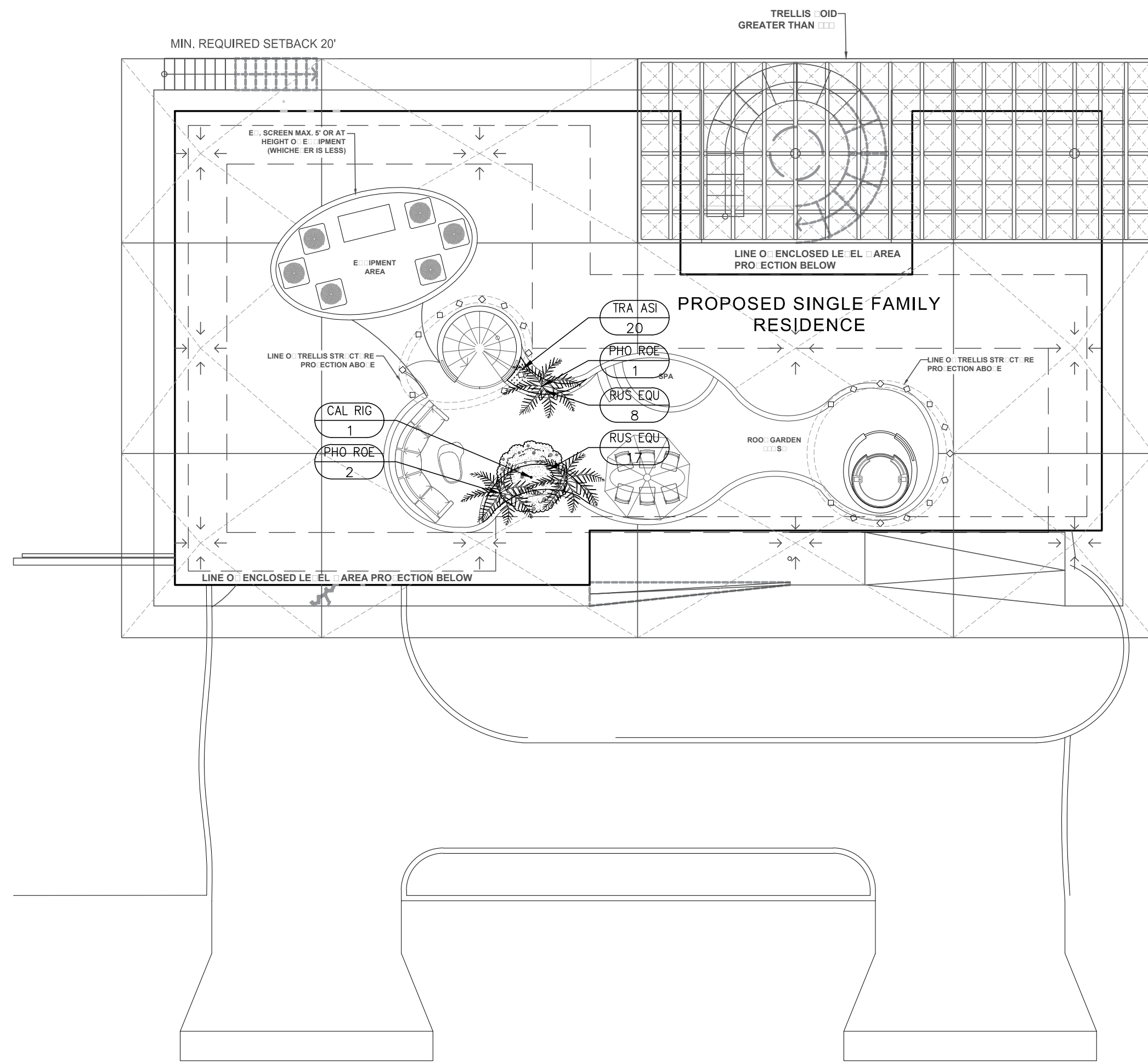
REGULATING DOCUMENT: CITY OF MIAMI BEACH CHAPTER 126 - LANDSCAPE REQUIREMENTS		
SITE AREA: 12,000 SF (.28 ACRES)		
ZONING/LAND USE: RS-4	REQUIRED	PROVIDED
SEC. 126 (a)(1) - STREET TREE SIZE AND SPACING 1 TREE/20LF STREET FRONTAGE @ 84 LF	5 TREES	5 TREES
SEC. 126 (b)(4) - MAXIMUM LAWN GRASS/SOD AREAS 50% @ 12,000 SF	6,000 SF	4,235 SF
SEC. 126 (c) - MINIMUM NUMBER OF TREES FRONT YARD 2 (+ 6 FOR ADD'L LOT SF) = 8 TREES BACK YARD 3 (+ 6 FOR ADD'L LOT SF) = 9 TREES	8 TREES 9 TREES	10 TREES 11 TREES
SEC. 126 (d) - SHRUBS 12 SHRUBS PER TOTAL REQUIRED TREES	264 SHRUBS	314 SHRUBS
NATIVE/DROUGHT TOLERANT SPECIES REQUIREMENTS	50% 60%	100% 62% OF REQ'D SHRUBS

ROOF LEVEL PLANT LIST AND SPECIFICATIONS

TREES AND PALMS					
SYMBOL	QTY	LATIN NAME	COMMON NAME	SIZE	DESCRIPTION
CAL RIG	1	Callistemon rigidus	STIFF BOTTLEBRUSH TREE	8' HT./5' SPRD	FG. SINGLE TRUNK TREE, SELF-SUPPORTING STRUCTURE, HEAVY BRANCHING
PHO ROE	3	Phoenix roebellinii	DOUBLE PYGMY DATE PALM	8' OA. HT.	FG. FLORIDA FANCY, DOUBLE EVEN TRUNKS, FULL CROWNS
SHRUBS AND GROUND COVER					
SYMBOL	QTY	LATIN NAME	COMMON NAME	SIZE	DESCRIPTION
RUS EQU	22	Russelia equisetiformis	FIRECRACKER PLANT	36" X 36"	FULL, SPACE 42" ON CENTER
TRA ASI	20	Trachelospermum asiaticum	ASIATIC JASMINE	6" X 18" SPRD	FULL RUNNERS, SPACE 18" ON CENTER

PLANTING NOTES & SPECIFICATIONS

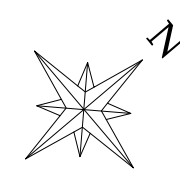
- CONTRACTOR TO VISIT SITE AND REVIEW PLANS PRIOR TO SUBMITTING A PROPOSAL TO OWNER. CONTRACTOR SHALL VERIFY SITE AND TREE INFORMATION, AND BRING ANY AND ALL DISCREPANCIES, CONFLICTS, SHORTAGES, OR OTHER SCOPE/QUANTITY TIME RELATED ISSUES, INCOMPLETENESS OR CONSISTENCY WITHIN THE PLANS TO THE ATTENTION OF THE LANDSCAPE ARCHITECT IMMEDIATELY FOR CLARIFICATION PRIOR TO SUBMITTING A PROPOSAL OR BASING A PROPOSAL ON THE SCOPE OF WORK.
- THESE PLANS WERE PREPARED BASED ON THE BEST INFORMATION AVAILABLE AT THE TIME OF DESIGN AND AS PROVIDED. ALL FINAL PLANS SHALL BE COORDINATED WITH FINAL APPROVED SITE PLAN.
- CONTRACTOR TO VERIFY ALL UNDERGROUND UTILITIES BEFORE WORK COMMENCES AND SHALL PROTECT ALL UNDERGROUND/ABOVE GROUND UTILITIES AND EXISTING CONDITIONS TO REMAIN DURING CONSTRUCTION.
- IF APPLICABLE, SEE TREE PROTECTION DETAIL ON LANDSCAPE DETAILS SHEET FOR TREE PROTECTION TO BE ERECTED BEFORE ANY CONSTRUCTION ACTIVITIES BEGIN FOR TREES AND PALMS TO REMAIN, AND TO REMAIN INTACT AS ERECTED UNTIL FINAL COMPLETION OF PROJECT.
- IN THE EVENT OF DISPUTE, THE LANDSCAPE ARCHITECT'S INTERPRETATION SHALL BE FINAL.
- ALL WORK TO BE IN ACCORDANCE WITH ALL APPLICABLE REGULATIONS AND ADJUST IF NECESSARY TO AVOID CONFLICTS OR SAFETY HAZARDS.
- ALL WORK TO BE PERFORMED IN A PROFESSIONAL, WORKMANLIKE MANNER AND ONLY DURING THOSE TIMES PERMITTED BY THE CITY OF HOLLYWOOD. PROTECT THE PUBLIC AND GENERAL PASSERSBY AT ALL TIMES AND PROTECT ALL TREES SPECIFIED TO REMAIN.
- ALL NEW PLANT MATERIAL SHALL BE FLORIDA NO. 1 OR BETTER ACCORDING TO "GRADES AND STANDARDS FOR NURSERY PLANTS" PUBLICATION BY THE FLORIDA DEPT. OF AGRICULTURE AND CONSUMER SERVICES. ALL TREES OR PLANTS NOT MEETING THIS MINIMUM SPECIFICATION AS DEFINED IN THE PUBLICATION WILL BE REJECTED.
- ALL TREES AND PALMS MUST BE PLANTED SO THE TOP OF THE ROOT BALL, ROOT FLARE, AND FIRST ORDER ROOTS ARE SLIGHTLY ABOVE THE FINAL GRADE (ADVENTITIOUS ROOTS ARE NOT CONSIDERED FIRST ORDER ROOTS).
- ALL SYNTHETIC BURLAP, SYNTHETIC STRING, CORDS OR OTHER NON-BIODEGRADABLE MATERIALS SHALL BE **COMPLETELY REMOVED IN THEIR ENTIRETY** FROM THE ROOTBALLS BEFORE ANY TREES ARE PLANTED.
- FOR BIODEGRADABLE BURLAP ROOTBALL CONTAINMENT THE TOP PORTION OF BURLAP MUST BE REMOVED FROM THE TOP OF THE ROOTBALLS. THE TOP 1/3RD OF WIRE BASKETS SHALL BE REMOVED, THE BOTTOM 2/3RDS SHALL BE CUT BEFORE THE TREES ARE INSTALLED.
- ALL SYNTHETIC TAPE (I.E., TAGGING TAPE, NURSERY TAPE) SHALL BE REMOVED FROM TRUNKS, BRANCHED, ETC. BEFORE INSPECTION. REMOVE ALL BAMBOO AND METAL STAKES FROM THE TREES.
- TREES SHALL HAVE A MULCH RING WITH A MINIMUM DIAMETER OF 4'. MULCH WILL BE A GRADE B SHREDDED WOOD HARVESTED FROM EXISTING MELALEUCA OR EUCALYPTUS STANDS (STERILIZED TO DESTROY ANY SEEDS) OVER HEAVY WEED BARRIER FABRIC, SECURED IN PLACE USING METAL SOD STAPLES, AND APPROXIMATELY 3" DEPTH WHEN SETTLED. USE COMMERCIAL GRADE BLACK PLASTIC EDGING FOR SHAPE AND CONTAINMENT OF SHRUB & GROUND COVER LANDSCAPE PLANTING AREAS, STAKED IN PLACE.
- ALL TREES AND PALMS SHALL BE GUYED WITH PROPER HORTICULTURAL AND ARBORICULTURAL TECHNIQUES. DO NOT USE WIRE, BLACK STRAPPING, OR OTHER SYNTHETIC MATERIAL FOR THE DIRECT STAKING OF TREES. PLEASE USE BIODEGRADABLE MATERIAL FOR STAKING DIRECTLY AROUND TRUNKS SUCH AS SISAL TWINE. NAILING INTO TREES AND PALMS FOR ANY REASON IS PROHIBITED. ALL STAKING MATERIAL SHALL BE REMOVED ONCE TREES ARE ESTABLISHED.
- ALL PREVIOUS LANDSCAPED AREAS SHALL RECEIVE 100% IRRIGATION COVERAGE, AS DEFINED BY CITY OF HOLLYWOOD, SFWMD AND INDUSTRY STANDARDS (BEING HEAD-TO-HEAD ARC THROW WITH 50% OVERLAP), BY MEANS OF AN AUTOMATIC, FULLY PROGRAMMABLE UNDERGROUND IRRIGATION SYSTEM UTILIZING PVC PIPE, RAINBIRD 1800 SERIES POP-UP SPRAY TYPE HEADS, REMOTE ELECTRONIC ZONE VALVES, A PROGRAMMABLE AUTOMATIC CONTROLLER WITH INTEGRATED RAIN SENSING, BACKFLOW PREVENTION DEVICE, SCHEDULE 90 PVC SLEEVES FOR PIPING BENEATH PAVEMENT, ETC. ADDITIONALLY, ALL NEWLY PLANTED TREES AND PALMS WILL RECEIVE A MINIMUM OF ONE (1) BUBBLER NOZZLE TO WATER THE ROOT SYSTEMS FOR ESTABLISHMENT. ADJUST SET SCREW TO EMIT NO MORE THAN .25 GPM FLOW EACH. THIS PLAN IS NOT COMPLETE WITHOUT IRRIGATION PLAN AND IRRIGATION DETAILS SHEETS L-300 AND L-301. IRRIGATION CONTRACTOR TO INSURE THAT FINAL SYSTEM AND ANY REQUIRED ADJUSTMENTS PROVIDE 100% COVERAGE AND ADDITIONAL ZONES MAY NEED TO BE ADDED TO ACHIEVE THIS. ALL WORK SHALL COMPLY WITH MUNICIPAL AND COUNTY ORDINANCES, SFWMD REGULATIONS AND RESTRICTIONS AND THE STATE OF FLORIDA.
- FOLLOW APPROVED LANDSCAPE PLANS FOR SPECIES, SIZES, LOCATIONS, QUANTITIES, QUALITY, ETC. IF CONTRACTOR IS UNABLE TO LOCATE PLANT MATERIAL AT REQUIRED SPECIFICATIONS CONTACT THE LANDSCAPE ARCHITECT PRIOR TO ANY CHANGES OR SUBSTITUTIONS BEING ASSUMED, ORDERED, OR MADE.
- PLANT LIST IS PROVIDED FOR CONVENIENCE ONLY. IF DISCREPANCIES EXIST BETWEEN PLANT TABLE AND PLAN, PLAN DRAWING AND ON-CENTER SPACING SHALL TAKE PRECEDENCE.
- ALL TREES ARE TO HAVE PROTECTIVE LAYER OF BURLAP OR SIMILAR HEAVY WOVEN PROTECTIVE FABRIC AROUND THE TRUNKS WHEN LOADING AND UNLOADING WITH MACHINE EQUIPMENT. NO SCARING OF TRUNKS WILL BE ACCEPTED AND MATERIALS THAT ARE SCARRED WILL BE REJECTED.
- ALL MATERIALS AND WORKMANSHIP WILL BE GUARANTEED FOR A PERIOD OF ONE YEAR AFTER FINAL ACCEPTANCE FOR FAILURE, DEATH, TERMINAL DECLINE, ETC.. THE WARRANTY PERIOD MAY BE EXTENDED BEYOND THAT TIMEFRAME IF, AT THE END OF ONE YEAR, ANY PLANTS ARE NOT IN A THRIVING STATE, INDICATIVE OF HEALTHY PLANTS OF EACH SPECIES.
- BEGIN WATERING ALL PLANT MATERIALS IMMEDIATELY AFTER INSTALLATION OR RELOCATION. FOR RELOCATIONS SEE CARE AND WATERING SCHEDULE ABOVE. FOR ALL NEW PLANTS, WATER ACCORDING TO SFWMD, BROWARD COUNTY AND CITY OF HOLLYWOOD REGULATIONS FOR NEW LANDSCAPE INSTALLATIONS UP TO 90 DAYS AND BEGIN PHASE II WATER RESTRICTION SCHEDULE FOLLOWING THAT. A SUMMARY IS: LANDSCAPING FROM 0-30 DAYS AFTER INSTALLATION WATERING CAN OCCUR ON ALL DAYS EXCEPT ON FRIDAYS. FROM 30-90 DAYS, WATERING FOR NEW LANDSCAPING CAN OCCUR ON MONDAY, WEDNESDAY, THURSDAY, AND SATURDAY. FOR BOTH ESTABLISHMENT WATERING PERIODS AND FINAL ESTABLISHED PERIOD, NO WATERING SHALL OCCUR BETWEEN 10 A.M. IN THE MORNING AND 4 P.M. IN THE AFTERNOON.
- ALL WORK WITHIN THESE PLANS TO BE DONE IN A SOUND, WORKMANLIKE MANNER, INDICATIVE OF THE PROFESSIONAL STANDARDS REGULATING EACH DISCIPLINE AND THE PERTINENT DIVISION OF THE CONSTRUCTION SPECIFICATIONS INSTITUTE, THE CITY OF HOLLYWOOD, AND ANY OTHER REGULATING OR GOVERNING AUTHORITY. WORK WILL ONLY OCCUR WITHIN THE DAYS AND HOURS SPECIFIED WITHIN THE CODE OF ORDINANCES AND CONTRACTORS AND SUB-CONTRACTORS SHALL PERFORM WORK IN A SAFE, PROFESSIONAL MANNER WITHOUT UNNECESSARY DISTURBANCE TO THE SURROUNDING COMMUNITY, OTHER ON-SITE WORKERS OR PASSERSBY.
- ANY DAMAGE TO EXISTING CONDITIONS INCLUDING EXISTING LAWN AREA WILL BE RESTORED TO A CONDITION EQUAL TO OR EXCEEDING THE CONDITION AT TIME OF WORK COMMENCEMENT. EXISTING LAWN REPAIR WILL BE DONE COMPLETE FOR ANY AND ALL DAMAGED AREAS AFFECTED BY WORK. THIS INCLUDES MATCHING OF EXISTING GRASS SPECIES WITH WHOLE, CERTIFIED SOD LAID OVER 2" BLANKET OF HAND-RAKED, FINELY-GRADED TOPSOIL AFTER ANY NECESSARY EXCAVATION REQUIRED SO THAT NEW SOD MATCHES EXISTING OR PREVIOUS SOD IN APPEARANCE, ELEVATION, EXTENT, WITH CLEAN AND TIGHT JOINTS AND CUT IN PROPERLY SO THAT NEW AND EXISTING EDGES MEET SEAMLESSLY. STAGGER JOINTS OF ALL NEW SOD. SPECIES SHALL BE ST. AUGUSTINE 'FLORATAM' VARIETY CERTIFIED TRUE TO NOMENCLATURE BY THE SUPPLIER ON RECEIPT. IF EXISTING PLANTING BEDS ARE DAMAGED, RESTORE TO SAME CONDITION WITH SAME MATERIALS.
- ANY REFERENCE, MENTION OR INFERENCE OF 'PLANTING SOIL', 'AMENDED SOIL', 'SOIL MIX' OR THE LIKE SHALL MEAN A SPECIFIC SOIL MIX AS FOLLOWS: 50-50 PERCENTAGE-BY-VOLUME RATIO, PRE-MIXED OFF SITE, AND COMPRISED OF 50% CLEAN, SCREENED SILICA SAND, AND 50% PULVERIZED FLORIDA MUCK, ALSO REFERRED TO AS TOPSOIL, FREE FROM ANY WEEDS, NEMATODES, SEEDS, AGGREGATE (OTHER THAN SPECIFIED SAND) OR OTHER DELETERIOUS MATERIALS AND PREPARED SPECIFICALLY FOR USE AS A SOIL AMENDMENT IN LANDSCAPING APPLICATIONS. AN AMENDED ORGANIC OF COW MANURE OR ORGANIC PEAT IS ACCEPTABLE UP TO 10% OF THE TOTAL VOLUME OF THE MIX.
- CONTRACTOR SHALL SECURE ALL NECESSARY PERMITS PRIOR TO COMMENCING WORK BASED ON THESE PLANS.
- ALL BEDLINES FOR SHRUBS AND GROUND COVER TO HAVE FLOWING ARCS AS SHOWN CREATING AN ATTRACTIVE, ORGANIC AESTHETIC. MULCHED BEDLINE EDGES WITH FLAT OR 'DEAD' AREAS THAT BREAK FROM THE CURVILINEAR NATURE WILL BE REJECTED.
- UNLESS OTHERWISE NOTED, ALL PERVIOUS AREAS NOT COVERED WITH TREES, SHRUBS, OR GROUND COVER SHALL BE PLANTED WITH SOD GRASS. ALL SOD SHALL BE WHOLE SOLID SQUARE PIECES, CERTIFIED TO SPECIES AND CULTIVAR, LAID OVER 2" BLANKET OF HAND-RAKED, FINELY-GRADED TOPSOIL AFTER ANY NECESSARY EXCAVATION REQUIRED SO THAT NEW SOD MATCHES EXISTING ELEVATIONS OF CURBS, WALKS AND OTHER SURROUNDING HARDSCAPE PAVEMENT. SOD SHALL BE LAID WITH TIGHT JOINTS, STAGGER JOINTS ONE WAY SO THAT EDGES MEET SEAMLESSLY WITH NO GAPS GREATER THAN 1/2" IN WIDTH. USE COARSE CONCRETE SAND TO FILL ANY JOINTS. WHERE 'SOD' IS INDICATED SPECIES SHALL BE ST. AUGUSTINE 'FLORATAM' VARIETY AND BAHIA GRASS SOD SHALL BE ARGENTINE VARIETY BAHIA SOD.
- ALL AREAS BENEATH BUILDING STRUCTURE AND BEHIND WALLS TO HAVE ORNAMENTAL WHITE MARBLE CHIP AGGREGATE MULCH OVER 6 MIL BLACK PLASTIC STAPLED IN PLACE.
- SPECIES SUBJECT TO AVAILABILITY AT TIME OF INSTALLATION IN THE REQUIRED.
- ANY ROOTS OVER 1-1/2" DIAMETER OF TREES AND PALMS TO REMAIN IN CONFLICT WITH BUILDING OR SLAB FOUNDATIONS TO BE EXCAVATED AND ROOT PRUNED WITH A CLEAN, SHARP ROOT PRUNING TOOL IN ACCORDANCE WITH ANSI A300 STANDARDS.
- CONTRACTOR TO OBTAIN ALL NECESSARY PERMITS PRIOR TO COMMENCEMENT OF WORK.



ALTON ROAD

ROOF LEVEL LANDSCAPE PLANTING PLAN

SCALE: 1" = 10'



This document, together with the concepts and designs presented herein, as an instrument of service, is intended only for the specific purpose and client for which it was prepared. Abuse of and improper reliance on this document without written authorization and adaptation by Green Earth Landscape Architecture, LLC shall be without liability to Green Earth Landscape Architecture, LLC.

LICENSED PROFESSIONAL
William Dale Bryant
 FLORIDA LICENSE NUMBER
LA666943

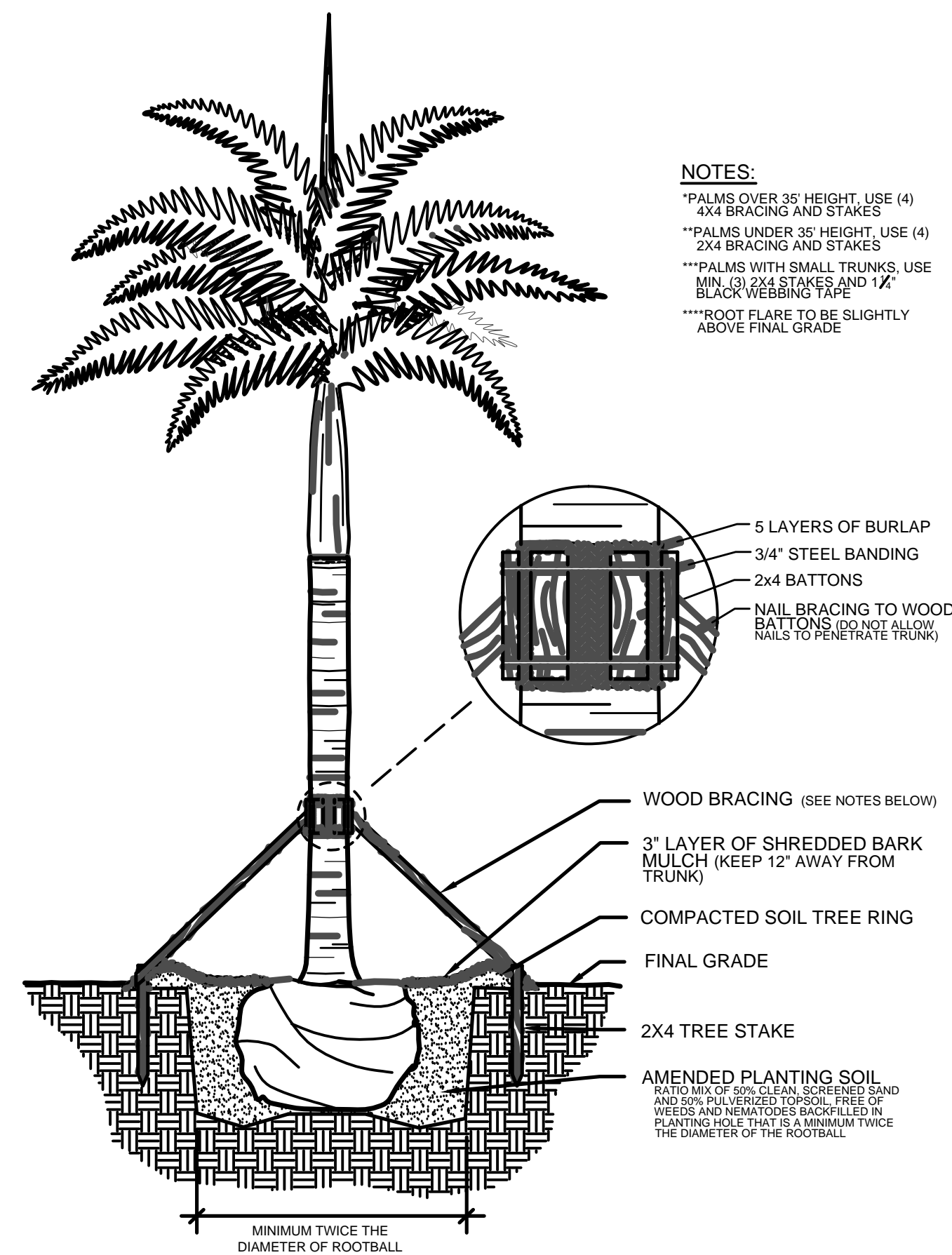
PROJECT #	DATE	SCALE	AS NOTED	DESIGNED BY	WDB	DRAWN BY	WDB	CHECKED BY	WDB	REVISIONS	DATE	BY
23-105	09-11-23											

HOUSE OF KIRSCHNER
 4410 Alton Road
 Miami Beach, FL

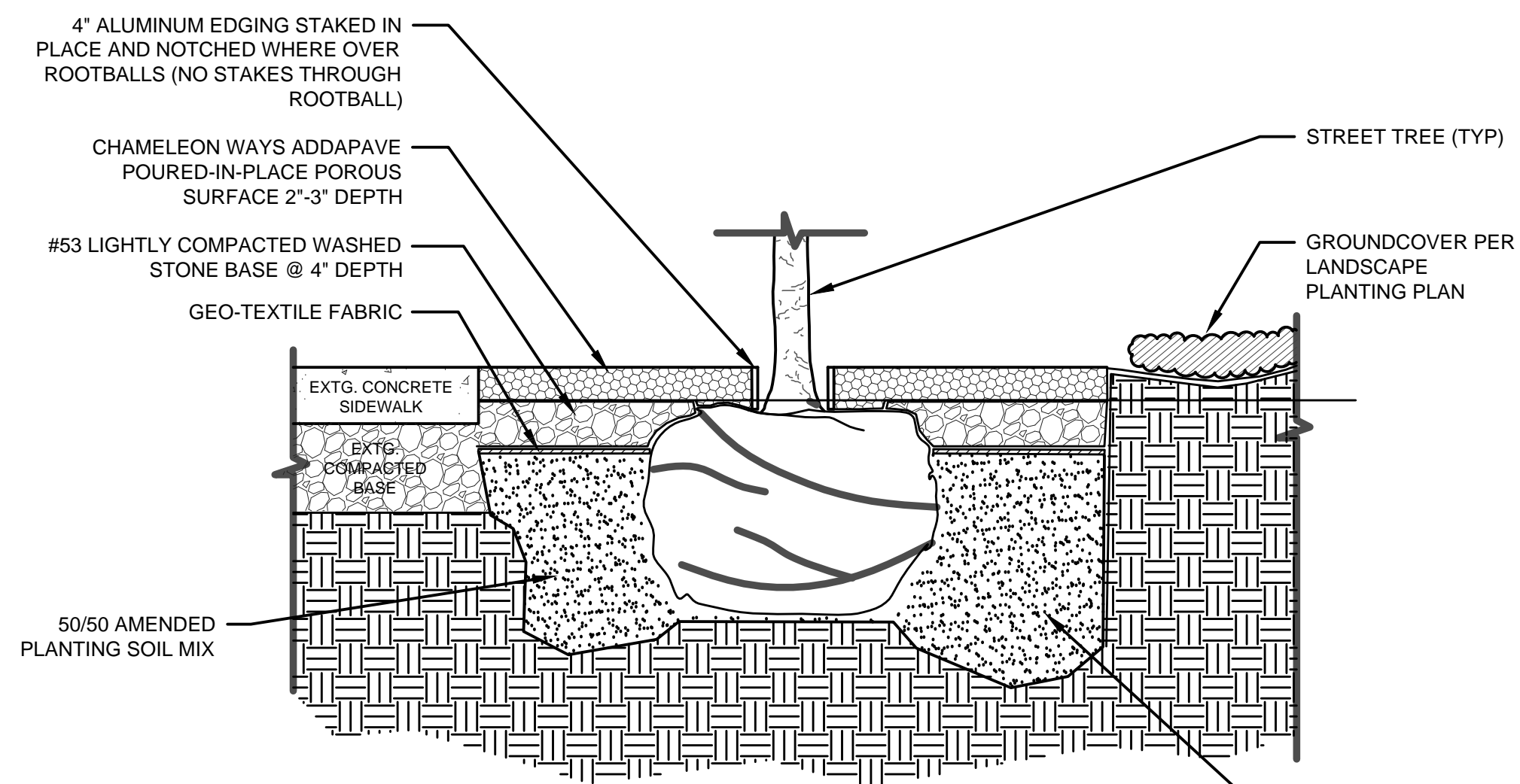
GREEN EARTH
 LANDSCAPE ARCHITECTURE, LLC
 WILTON MANORS, FLORIDA
 E-MAIL: info@greenearthllc.com PHONE: 314-418-1825

LANDSCAPE PLANTING
PLAN ROOF LEVEL

SHEET NUMBER
L-203

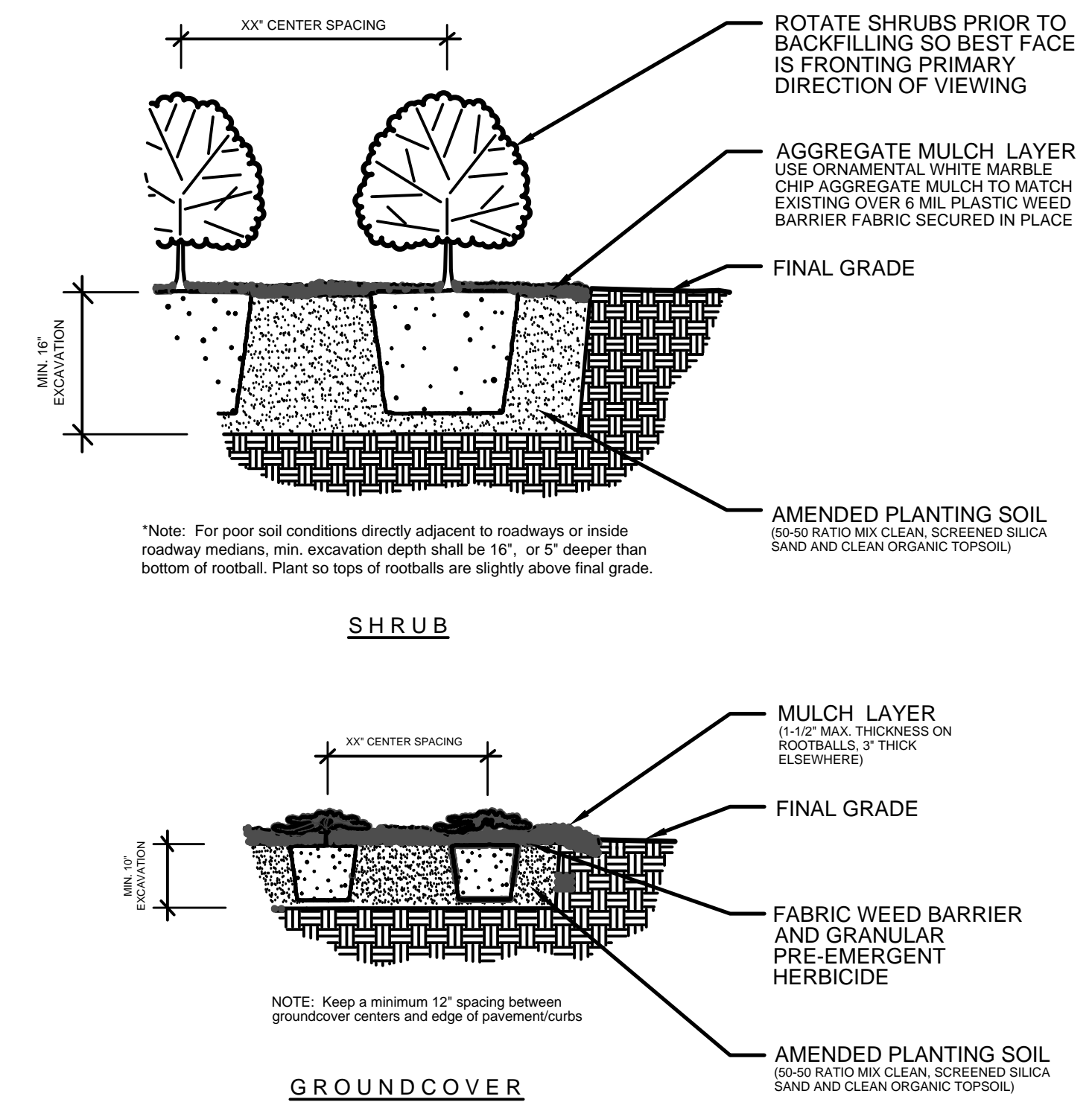


1 PALM PLANTING DETAIL
 SECTION N.T.S.

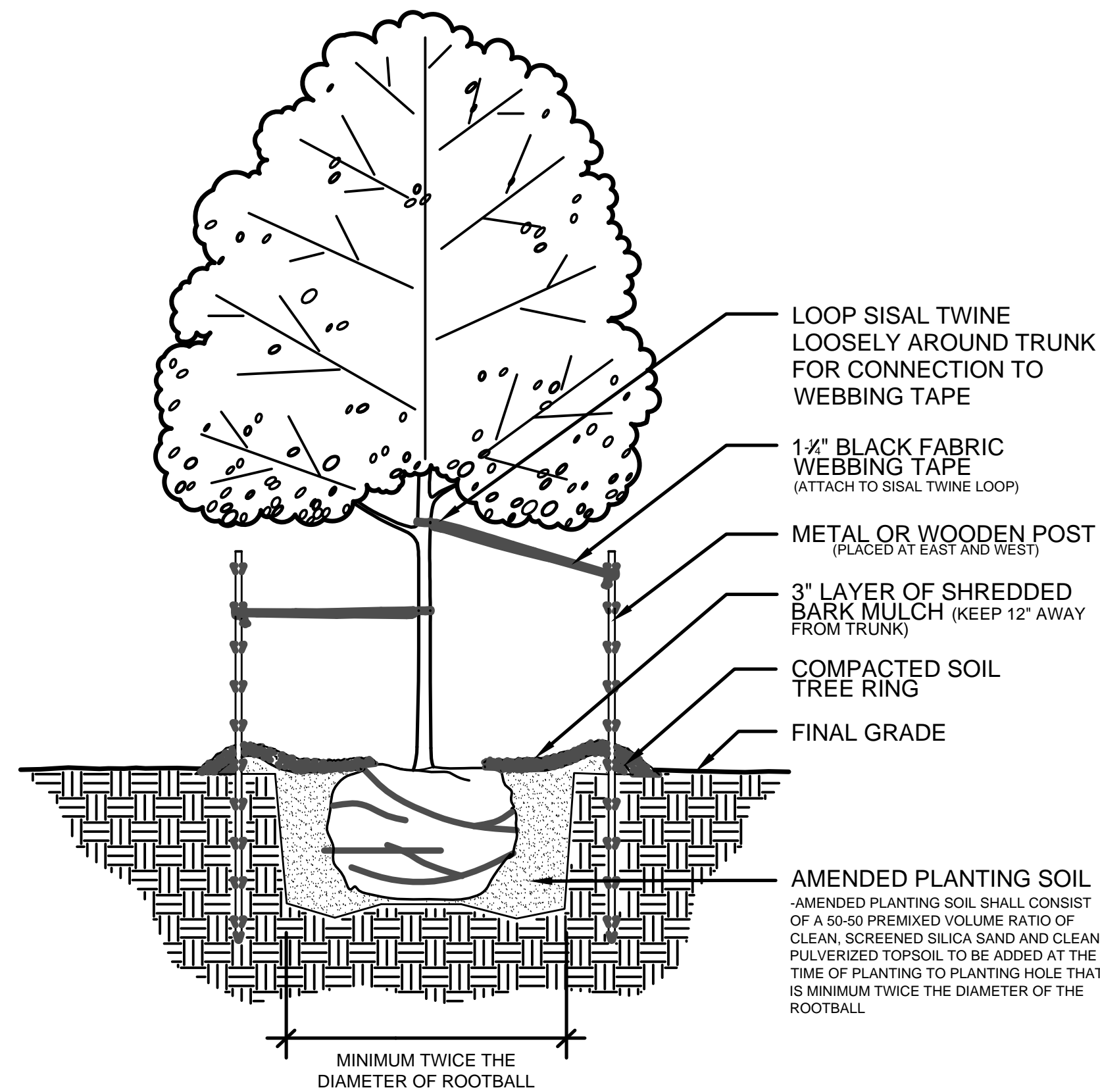


NOTES:
 1. VERIFY 4' X 4' AT-GRADE PERVIOUS PLANTERS ARE CLEAR OF HARDSCAPE AS SCALED ON LANDSCAPE PLANTING PLAN AND SITE PLAN TO PREPARE FOR ADDAPAVE POROUS GRATE INSTALLATION; PLANTER DIMENSIONS WILL BEGIN AT EDGE OF EXISTING WALK FOR EACH STREET TREE; CENTER AS SHOWN ON PLANS
 2. 3/4" X 4" BLACK POWDER COATED STEEL EDGING TO BE PROVIDED AT ALL ADDAPAVE EDGE CONDITIONS STAKED IN PLACE; WHERE EDGING TRAVERSES OVER TREE ROOTBALLS PLACE A BIO-DEGRADABLE SPACER BETWEEN EDGE OF TRUNKS AND STEEL EDGING TO PREVENT BOWING AND CONTINUE STAKES BEYOND ROOTBALL EDGES
 3. GRAPHIC DETAIL IS FOR ILLUSTRATION PURPOSES ONLY; DO NOT SCALE THIS GRAPHIC FOR CONSTRUCTION
 4. POROUS AGGREGATE SURFACING TO BE ADDAPAVE TP RESIN BOUND POROUS SURFACING CONSISTING OF AGGREGATE, FULLY COATED WITH TWO-PART CHEMICALLY CURING, UV STABLE, FLEXIBLE, CRYSTAL CLEAR RESIN, HAND FINISHED BY TROWEL AS SUPPLIED BY:
 CHAMELEON WAYS, INC., PO BOX 387, CENTER VALLEY, PA 18034
 TEL 877-426-5687 FAX 610-797-4654
 email: info@chameleonways.com
 INSTALLATION TO BE COMPLETED BY AN AUTHORIZED CHAMELEON WAYS, INC APPLICATOR

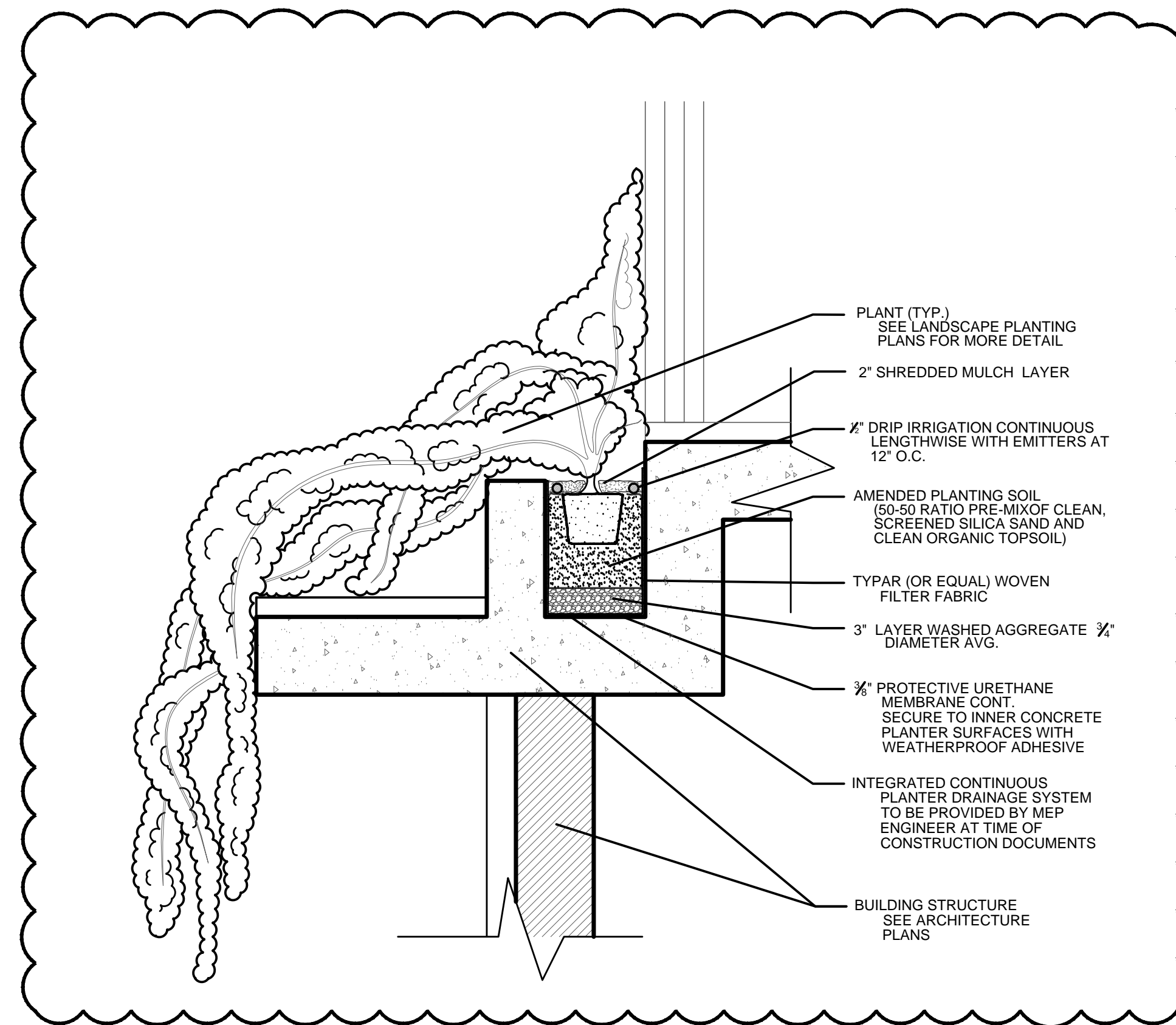
ADDAPAVE POROUS PAVEMENT DETAIL
 SECTION N.T.S.



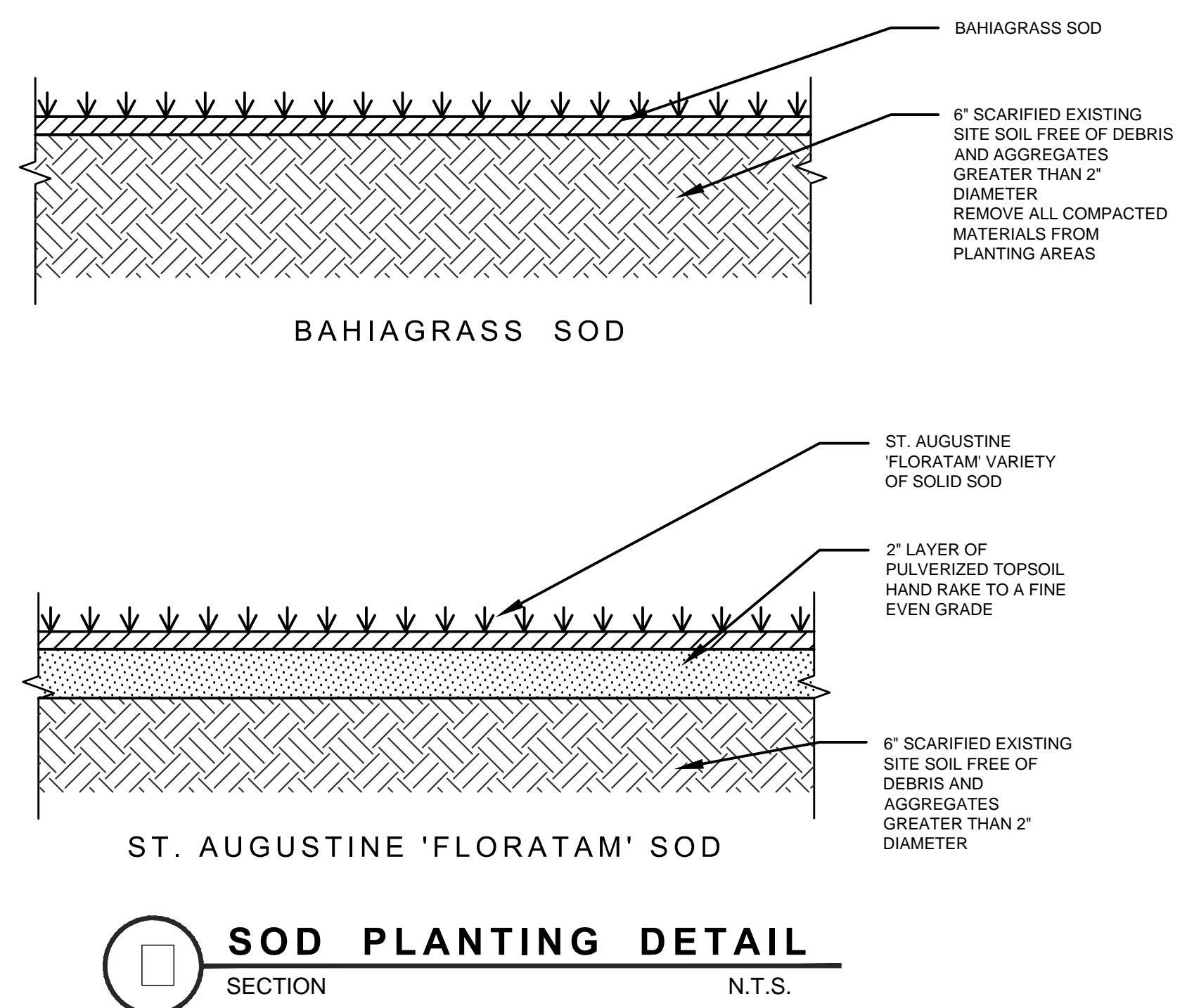
SHRUB/GROUND COVER PLANTING DETAIL
 SECTION N.T.S.



TREE PLANTING DETAIL
 SECTION N.T.S.



5 ELEVATED PLANTER DETAIL
 SECTION SCALE: 1" = 1'-0"



SOD PLANTING DETAIL
 SECTION N.T.S.

This document, together with the concepts and design presented herein, is an instrument of service, it is intended only for the specific purpose and client for which it was prepared. Reuse of said instrument without written authorization and adaptation by Green Earth Landscape Architecture, shall be without liability to Green Earth Landscape Architecture, LLC.

NO.	DATE	BY	REVISIONS

PROJECT # 23-105
 DATE 09-11-23
 SCALE AS NOTED
 DESIGNED BY WDB
 DRAWN BY WDB
 CHECKED BY WDB
 PROJECT # 23-105
 DATE 09-11-23
 SCALE AS NOTED
 DESIGNED BY WDB
 DRAWN BY WDB
 CHECKED BY WDB

HOUSE OF KIRSCHNER
 4410 Alton Road
 Miami Beach, FL
 MIAMI-DADE COUNTY

GREEN EARTH
 LANDSCAPE ARCHITECTURE, LLC
 WILTON MANORS, FLORIDA
 P.O. BOX 131313
 MIAMI, FLORIDA 33131
 PHONE 305-533-3955

**LANDSCAPE
 DETAILS**