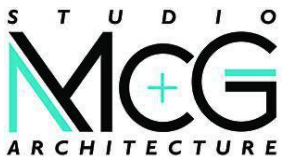


# FINAL DESIGN REVIEW BOARD

- L001 COVER SHEET
- L002 TREE DISPOSITION PLAN
- L003 EXISTING TREE SCHEDULE
- L004 LANDSCAPE LEGEND AND MITIGATION
- L100 SITE HARDSCAPE PLAN
- L200 SITE PLANTING PLAN
- L201 2ND LEVEL PLANTING PLAN
- L202 PLANTING DETAILS
- L300 SITE LIGHTING PLAN

NOTE: ARBORIST REPORT SUBMITTED AS A SEPARATE FILE



7500 NE 4th Court  
Suite 102  
Miami, FL 33138  
T: (305) 573-2728

PROJECT NUMBER

2314

PROJECT NAME

WHOLE FOODS  
AND  
WELLS FARGO  
1901 ALTON ROAD  
MIAMI BEACH, FL 33141

OWNER

CRESCENT HEIGHTS

FACADE ARCHITECT

OPPENHEIM ARCHITECTURE  
AND DESIGN

DRAWING

COVER  
SHEET

JUSTINE VELEZ FLORIDA LIC# LA666791

ALL DRAWINGS AND WRITTEN MATERIAL APPEARING  
HEREIN CONSTITUTE THE ORIGINAL AND UNPUBLISHED  
WORK OF STUDIO MCG+ ARCHITECTURE AND  
MAY NOT BE DUPLICATED, USED OR DISCLOSED  
WITHOUT THE EXPRESS WRITTEN CONSENT OF  
STUDIO MCG+ ARCHITECTURE & PLANNING, INC. © 2020

SCALE: 1/32" = 1'-0"

DRAWN: AJ

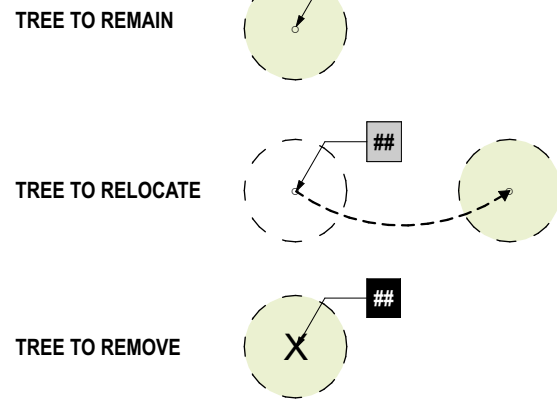
CHECK: JW/DS

DATE: 12/03/23

SHEET NUMBER

L001

**KEY**



TREES #5, 7, & 10 TO BE PRUNED TO REMOVE DEADWOOD AS SOON AS POSSIBLE SINCE IT IS OVER A PARKING LOT.

7500 NE 4th Court  
Suite 102  
Miami, FL 33138  
T: (305) 573-2728

PROJECT NUMBER  
2314

PROJECT NAME  
**WHOLE FOODS AND WELLS FARGO**  
1901 ALTON ROAD  
MIAMI BEACH, FL 33141

OWNER  
CRESCENT HEIGHTS

FACADE ARCHITECT  
OPPENHEIM ARCHITECTURE AND DESIGN

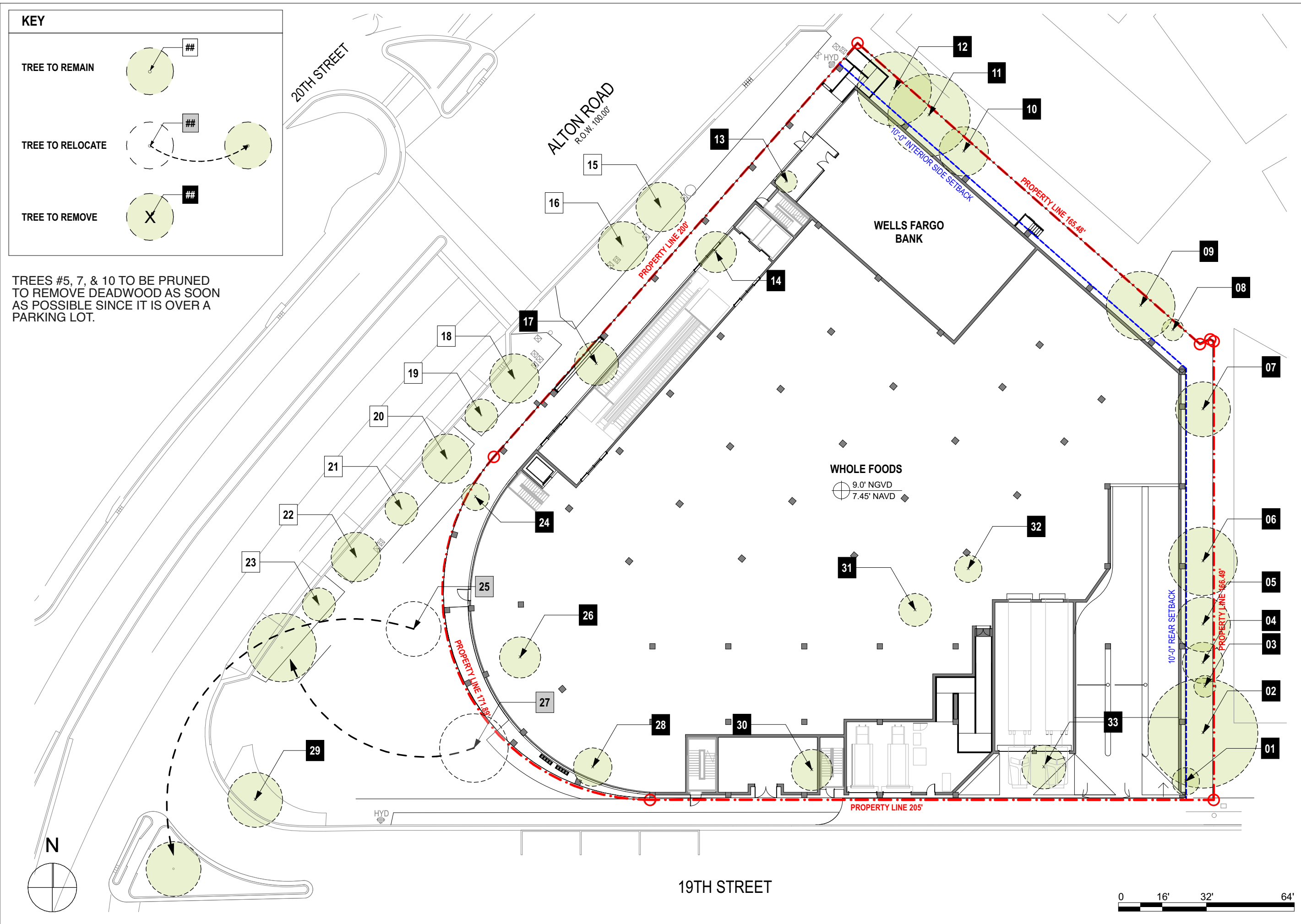
DRAWING

**TREE DISPOSITION PLAN**

JUSTINE VELEZ, FLORIDA LIC# LA6667391  
ALL DRAWINGS AND WRITTEN MATERIAL APPEARING HEREIN CONSTITUTE THE ORIGINAL AND UNPUBLISHED WORK OF STUDIO MCG ARCHITECTURE AND MAY NOT BE DUPLICATED, USED OR DISCLOSED WITHOUT THE EXPRESS WRITTEN CONSENT OF STUDIO MCG ARCHITECTURE & PLANNING, INC. © 2020

SCALE: 1/32" = 1'-0"  
DRAWN: AJ  
CHECK: JV/DS  
DATE: 1/20/23

SHEET NUMBER  
L002



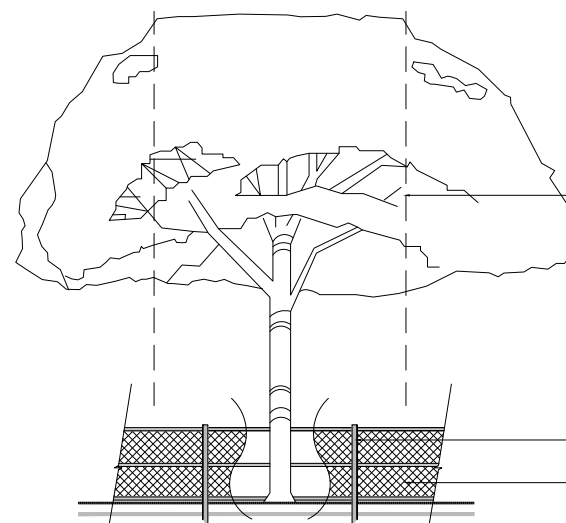
EXISTING  
TREE  
SCHEDULE

Existing Tree Schedule									
Symbol	ID	Botanical Name	Common Name	DBH	Height	Spread	Native	Status	Remarks
(X)	01	Washingtonia robusta	Mexican Fan Palm	14"	50'	10'	N	REMOVE	
(X)	02	Acacia auriculiformis	Earleaf acacia	30"	45'	40'	N	REMOVE	Prohibited Tree*
(X)	03	Washingtonia robusta	Mexican Fan Palm	8"	8'	8'	N	REMOVE	
(X)	04	Acacia auriculiformis	Earleaf acacia	10.5"	30'	15'	N	REMOVE	Prohibited Tree*
(X)	05	Acacia auriculiformis	Earleaf acacia	17"	33'	20'	N	REMOVE	LARGE DEADWOOD; PRUNE TO REMOVE DEADWOOD ASAP Prohibited Tree*
(X)	06	Acacia auriculiformis	Earleaf acacia	12"	30'	25'	N	REMOVE	Prohibited Tree*
(X)	07	Acacia auriculiformis	Earleaf acacia	18.5"	40'	20'	N	REMOVE	LARGE DEADWOOD; PRUNE TO REMOVE DEADWOOD ASAP Prohibited Tree*
(X)	08	Tabebuia heterophylla	Pink Trumpet Tree	6"	20'	8'	N	REMOVE	
(X)	09	Acacia auriculiformis	Earleaf acacia	19.5"	40'	25'	N	REMOVE	Prohibited Tree*
(X)	10	Acacia auriculiformis	Earleaf acacia	24"	40'	18'	N	REMOVE	LARGE DEADWOOD; PRUNE TO REMOVE DEADWOOD ASAP Prohibited Tree*
(X)	11	Acacia auriculiformis	Earleaf acacia	24"	40'	30'	N	REMOVE	Prohibited Tree*
(X)	12	Acacia auriculiformis	Earleaf acacia	12"	40'	27'	N	REMOVE	Prohibited Tree*
(X)	13	Washingtonia robusta	Mexican Fan Palm	16"	40'	8'	N	REMOVE	
(X)	14	Roystonea regia	Royal Palm	14"	50'	15'	Y	REMOVE	
(X)	15	Conocarpus erectus 'sericeus'	Silver Buttonwood	8"	15'	18'	Y	REMAIN	
(X)	16	Conocarpus erectus 'sericeus'	Silver Buttonwood	8"	15'	18'	Y	REMAIN	
(X)	17	Roystonea regia	Royal Palm	16"	45'	16'	Y	REMOVE	
(X)	18	Quercus virginiana	Live Oak	6"	20'	18'	Y	REMAIN	
(X)	19	Phoenix sylvestris	Silvester Date Palm	12"	25'	12'	N	REMAIN	
(X)	20	Quercus virginiana	Live Oak	9"	20'	18'	Y	REMAIN	
(X)	21	Phoenix sylvestris	Silvester Date Palm	12"	25'	12'	N	REMAIN	

Existing Tree Schedule									
Symbol	ID	Botanical Name	Common Name	DBH	Height	Spread	Native	Status	Remarks
(X)	22	Quercus virginiana	Live Oak	6"	18'	18'	Y	REMAIN	
(X)	23	Phoenix sylvestris	Silvester Date Palm	14"	25'	12'	N	REMAIN	
(X)	24	Roystonea regia	Royal Palm	14"				REMOVE	
(X)	25	Phoenix dactylifera	Date Palm	18"	28'	20'	N	RELOCATE	
(X)	26	Sabal palmetto	Sabal Palm	13"	25'	15'	Y	REMOVE	
(X)	27	Quercus virginiana	Live Oak	12"	30'	25'	Y	RELOCATE	
(X)	28	Roystonea regia	Royal Palm	12.5"	40'	14'	Y	REMOVE	
(X)	29	Veitchia arecina	Montgomery Palm 'double'	7"	25'	20'		REMOVE	
(X)	30	Roystonea regia	Royal Palm	14"	50'	15'	Y	REMOVE	
(X)	31	Washingtonia robusta	Mexican Fan Palm	14"	40'	12'	N	REMOVE	
(X)	32	Syagrus romanzoffiana	Queen Palm	8"	25'	10'	N	REMOVE	
(X)	33	Roystonea regia	Royal Palm	17"	50'	16'	Y	REMOVE	

TREE/PALM PROTECTION FENCES SHALL BE CONSTRUCTED PRIOR TO ANY CONSTRUCTION ACTIVITY INCLUDING GRUBBING FOR ALL TREES/PALMS THAT ARE TO REMAIN, BE PROTECTED OR BE RELOCATED

NO ACTIVITY OR DISTURBANCE SHOULD OCCUR WITHIN THE FENCED AREAS, INCLUDING VEHICLE USE, STORAGE OF MATERIALS, DUMPING OF LIQUIDS OR MATERIALS, GRADE CHANGES, GRUBBING, AND MECHANICAL TRENCHING FOR IRRIGATION, ELECTRICAL, LIGHTING, ETC.



IN NO CASE SHALL THE FENCE BE INSTALLED LESS THAN TEN FEET FROM THE TRUNK

TREE + PALM PROTECTION BARRIERS TO EXTEND BEYOND THE 'DRIPLINE' OR TO THE 'CRITICAL ROOT ZONE AREA' OF ALL TREES/PALMS TO BE PROTECTED. EXTEND WHERE NECESSARY TO PROTECT TREE CANOPY ROOTS

BARRIERS SHALL BE A MINIMUM OF FOUR FEET HIGH, AND SHALL BE CONSTRUCTED OF CONTINUOUS CHAIN LINK FENCE WITH METAL POSTS AT EIGHT-FOOT SPACING OR 2"x4" POSTS WITH THREE EQUALLY SPACED 2"x4" RAILS. POSTS MAY BE SHIFTED TO AVOID ROOTS.

PROTECTION DETAIL NOTE:  
CONTRACTOR TO INSTALL 'TREE/PALM PROTECTION FENCE BARRIERS' AROUND ALL EXISTING TREES OR PALMS AT THE START OF THE PROJECT. BARRIERS TO REMAIN IN PLACE THROUGHOUT THE DURATION OF THE PROJECT AND SHOULD NOT BE REMOVED OR DROPPED FOR ANY REASON WITHOUT AUTHORIZATION FROM THE CITY OF MIAMI BEACH URBAN FORESTER + PLANNING + ZONING DEPARTMENT

C.M.B. TREE / PALM PROTEC. DETAIL

NOTE:

TREES #5, 7, & 10 TO BE PRUNED TO REMOVE DEADWOOD AS SOON AS POSSIBLE SINCE THEY ARE OVER A PARKING LOT.

# CITY OF MIAMI BEACH LANDSCAPE LEGEND

INFORMATION REQUIRED TO BE PERMANENTLY AFFIXED TO PLANS

Zoning District CD-1 Lot Area 55,377 Acres 1.27

## OPEN SPACE

- A. Square feet of required Open Space as indicated on site plan:  
Lot Area = 55,377 s.f. x 5.98 % = 3,312 s.f.
- B. Square feet of parking lot open space required as indicated on site plan:  
Number of parking spaces \_\_\_\_\_ x 10 s.f. parking space =
- C. Total square feet of landscaped open space required: A+B=

REQUIRED/ ALLOWED	PROVIDED
3,312	3,312
N/A	N/A
3,312	2,913

## LAWN AREA CALCULATION

- A. Square feet of landscaped open space required
- B. Maximum lawn area (sod) permitted= 3,312 % x 20% s.f.

662	0
-----	---

## TREES

- A. Number of trees required per lot or net lot acre, less existing number of trees meeting minimum requirements=  
22 trees x 1.27 net lot acres - number of existing trees=
- B. % Natives required: Number of trees provided x 30% =
- C. % Low maintenance / drought and salt tolerant required:  
Number of trees provided x 50%=
- D. Street Trees (maximum average spacing of 20' o.c.)  
576.96 linear feet along street divided by 20'=
- E. Street tree species allowed directly beneath power lines:  
(maximum average spacing of 20' o.c.):  
\_\_\_\_\_ linear feet along street divided by 20'=

28	25 Ground 3 On structure
8	28
14	28
29	6 Existing = 31 25 Proposed

## SHRUBS

- A. Number of shrubs required: Sum of lot and street trees required x 12=
- B. % Native shrubs required: Number of shrubs provided x 50%=

684	864
432	340

## LARGE SHRUBS OR SMALL TREES

- A. Number of large shrubs or small trees required: Number of required shrubs x 10%=
- B. % Native large shrubs or small trees required: Number of large shrubs or small trees provided x 50%=

68	78
39	78

### NOTE:

Street Trees will comply with Florida Fancy requirements. All other planting materials shall meet or exceed Florida Grade # 1 as specified in Grades and Standards for Nursery Plants and Part II, Palms and Trees, current edition

## TOTAL TREES AND PALMS TO BE REMOVED

### TREES

- 183" DBH  
1 Tabebuia heterophylla  
9 Acacia auriculiformis (prohibited tree)

### REQUIRED MITIGATION

- 60 SMALL TREES (2" DBH x 6' SPREAD x 12' HEIGHT) OR,  
30 LARGE TREES (4" DBH x 8' SPREAD x 16' HEIGHT) OR,  
\$150,000 CONTRIBUTION TO TREE TRUST FUND

### PALMS

- 4 Washingtonia robusta  
6 Roystonea regia  
1 Veitchia arecina  
1 Syagrus romanzoffiana  
1 Sabal Palm

*Sec. 46-61. (c) The removal of a palm shall be replaced with one canopy tree at 12 feet overall height with a two-inch DBH.*

### REQUIRED MITIGATION

- 13 SMALL TREES (2" DBH x 12' HEIGHT) OR,  
6.5 LARGE TREES (4" DBH x 16' HEIGHT) OR,  
\$32,500 CONTRIBUTION TO TREE TRUST FUND

## PROPOSED TREES. SEE PLANTING PLANS

- SMALL TREES: 28  
6 Eugenia foetida \*  
5 Gymnanthes lucida \*  
3 Ilex vomitoria \*  
5 Myrcianthes fragrans \*  
6 Pimenta racemosa \*  
3 Annona glabra \*

- LARGE TREES: 25  
8 Conocarpus erectus \*  
5 Conocarpus erectus sericeus \*  
12 Taxodium distichum \*

\* = Native trees

### REQUIRED MITIGATION

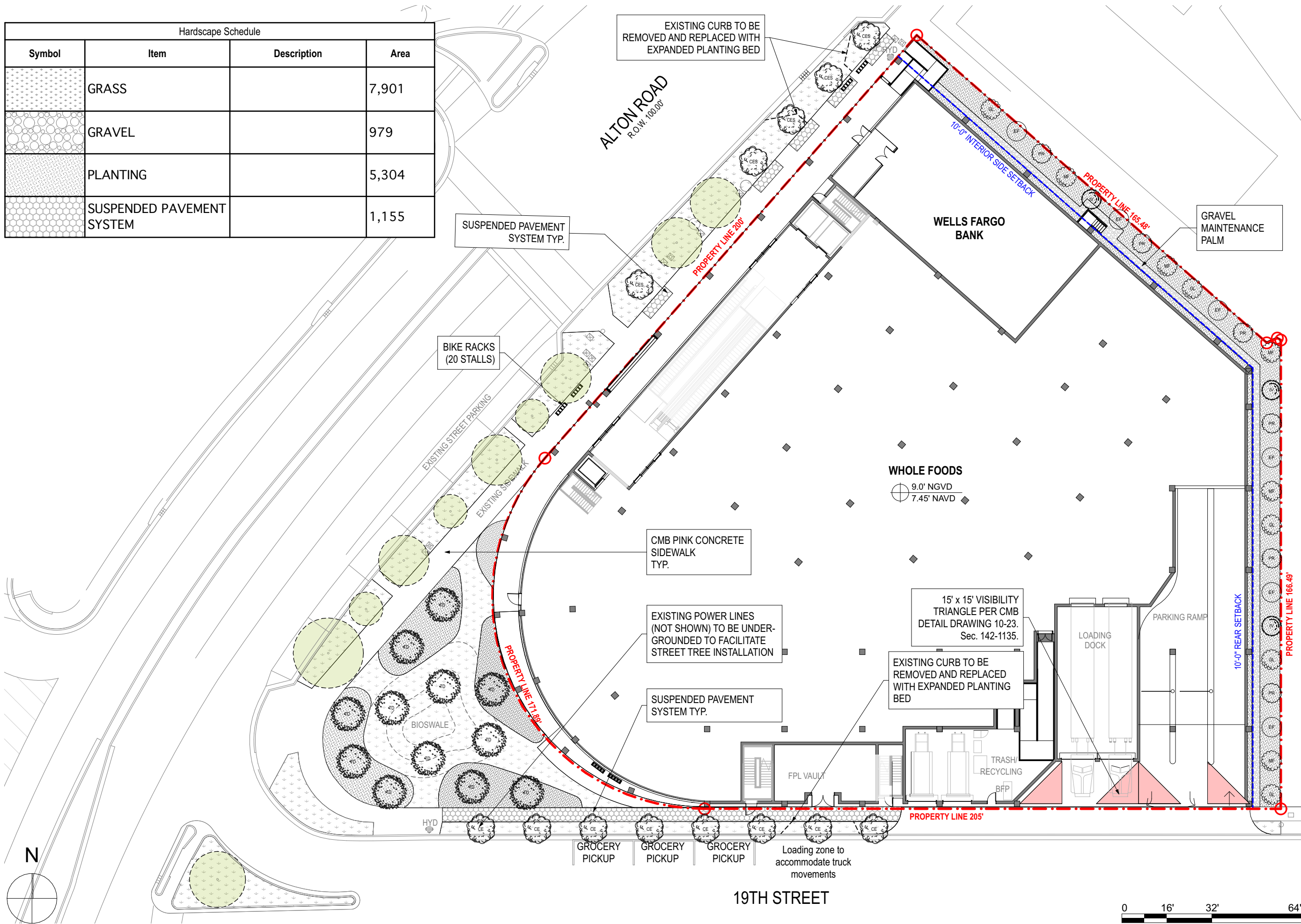
- 73 SMALL TREES

### TOTAL PROPOSED

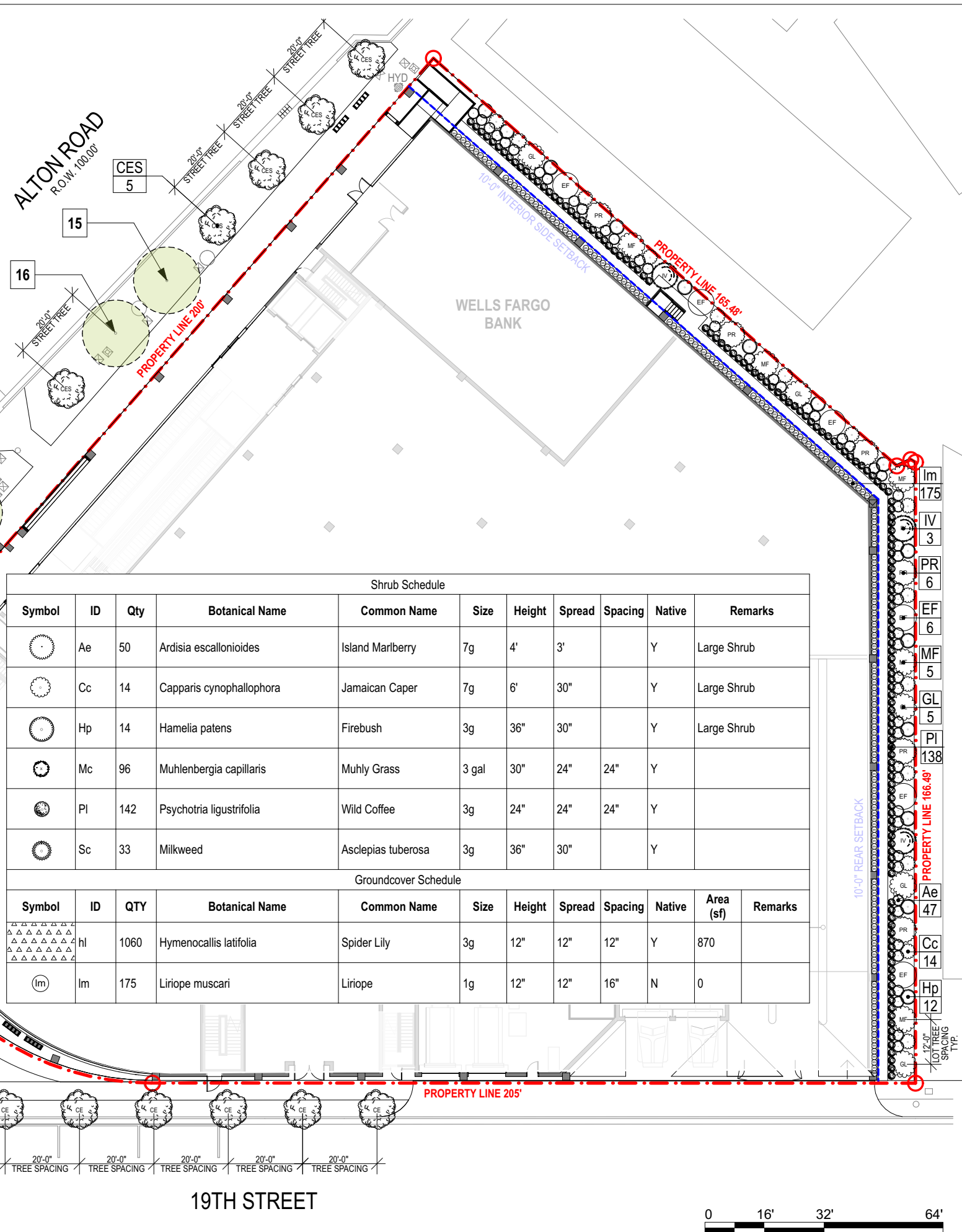
- 28 SMALL TREES + 25 LARGE TREES  
(78 SMALL TREES EQUIVALENT)

EXCEEDING BY 5 SMALL TREES OR 2.5 LARGE TREES EQUIVALENT

Hardscape Schedule			
Symbol	Item	Description	Area
	GRASS		7,901
	GRAVEL		979
	PLANTING		5,304
	SUSPENDED PAVEMENT SYSTEM		1,155



Tree Schedule									
Symbol	ID	Qty	Botanical Name	Common Name	DBH	Height	Spread	Native	Remarks
	CE	8	Conocarpus erectus	Green Buttonwood	4"	16' min	10'	Y	Florida Fancy - Street Tree - Standard Trunk
	CES	5	Conocarpus erectus 'serica'	Silver Buttonwood	4"	16' min	10'	Y	Florida Fancy - Street Tree - Standard Trunk
	EF	6	Eugenia foetida	Spanish Stopper	2"	12' min	7'	Y	Lot Tree
	GL	5	Gymnanthes lucida	Crabwood	2"	12' min	7'	Y	Lot Tree
	IV	3	Ilex vomitoria	Yaupon Holly	2"	12' min	7'	Y	Lot Tree
	MF	5	Myrcianthes fragrans	Simpson's Stopper	2"	12' min	7'	Y	Lot Tree
	PR	6	Pimenta racemosa	Bay Rum	2"	12' min	7'	Y	Lot Tree
	TD	12	Taxodium distichum	Bald Cypress	4"	16' min	10'	Y	Florida Fancy - Street Tree - Standard Trunk



Shrub Schedule										
Symbol	ID	Qty	Botanical Name	Common Name	Size	Height	Spread	Spacing	Native	Remarks
	Ae	50	Ardisia escallonioides	Island Marberry	7g	4'	3'		Y	Large Shrub
	Cc	14	Capparis cynophallophora	Jamaican Caper	7g	6'	30"		Y	Large Shrub
	Hp	14	Hamelia patens	Firebush	3g	36"	30"		Y	Large Shrub
	Mc	96	Muhlenbergia capillaris	Muhly Grass	3 gal	30"	24"	24"	Y	
	PI	142	Psychotria ligustrifolia	Wild Coffee	3g	24"	24"	24"	Y	
	Sc	33	Milkweed	Asclepias tuberosa	3g	36"	30"		Y	

Groundcover Schedule											
Symbol	ID	QTY	Botanical Name	Common Name	Size	Height	Spread	Spacing	Native	Area (sf)	Remarks
	hl	1060	Hymenocallis latifolia	Spider Lily	3g	12"	12"	12"	Y	870	
	Im	175	Liriope muscari	Liriope	1g	12"	12"	16"	N	0	



7500 NE 4th Court  
Suite 102  
Miami, FL 33138  
T: (305) 573-2728

PROJECT NUMBER  
2314

PROJECT NAME  
WHOLE FOODS  
AND  
WELLS FARGO  
1901 ALTON ROAD  
MIAMI BEACH, FL 33141

OWNER  
CRESCENT HEIGHTS

FACADE ARCHITECT  
OPPEHEIM ARCHITECTURE  
AND DESIGN

DRAWING

SITE  
PLANTING  
PLAN

JUSTINE VELEZ, FLORIDA LIC# LA6667391  
ALL DRAWINGS AND WRITTEN MATERIAL APPEARING  
HEREIN CONSTITUTE THE ORIGINAL AND UNPUBLISHED  
WORK OF STUDIO MCG ARCHITECTURE AND  
MAY NOT BE DUPLICATED, USED OR DISCLOSED  
WITHOUT THE EXPRESS WRITTEN CONSENT OF  
STUDIO MCG ARCHITECTURE & PLANNING, INC. (c) 2020

SCALE: 1/32" = 1' - 0"  
DRAWN: AJ  
CHECK: JV/DS  
DATE: 1/2/03/23

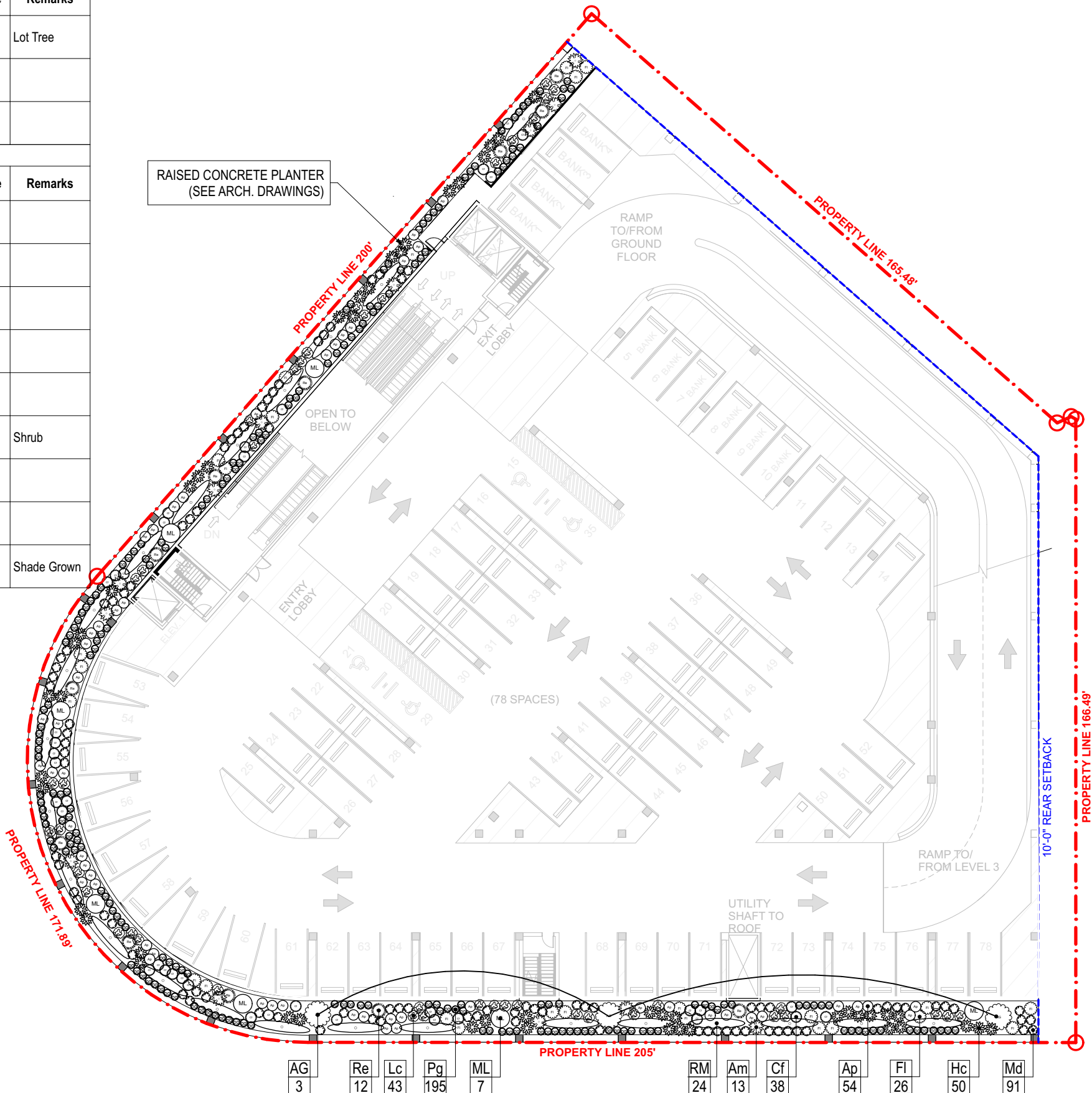
SHEET NUMBER  
L200

2nd Level Tree Schedule

Symbol	ID	Qty	Botanical Name	Common Name	DBH	Height	Spread	Native	Remarks
	AG	3	Annona glabra	Pond Apple Tree	2.5"	12'	6'	Y	Lot Tree
	ML	7	Polyalthia longifolia 'Upright'	Mast Tree		10'	4'	N	
	RM	24	Ravenala madagascariensis	Traveller Tree		15'	12'	N	

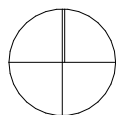
2nd Level Shrub Schedule

Symbol	ID	Qty	Botanical Name	Common Name	Size	Height	Spread	Native	Remarks
	Am	13	Alocasia macrorrhiza	Black Stem Elephant Ear	7g			N	
	Ap	54	Alpinia purpurata 'Pink'	Pink Ginger	15g	5'		N	
	Cf	38	Cordyline fruticosa 'Pink Diamond'	Pink Diamond Cordyline	7 gal	30"	30"	N	
	Fl	26	Ficus lyrata	Fiddle Leaf Fig	7g			N	
	Hc	50	Heliconia caribaea x bihai 'Jacquini'	Heliconia caribaea x bihai 'Jacquini'	8'			N	
	Lc	43	Leea coccinea 'Rubra'	West Indian Holly	7g	36"	30"	N	Shrub
	Md	91	Monstera deliciosa	Swiss Cheese Vine	7g	4'	3'	N	
	Pg	195	Philodendron gloriosum	Philodendron gloriosum	3g	2'	2'	N	
	Re	12	Rhapis excelsa	Lady Palm		6'		N	Shade Grown

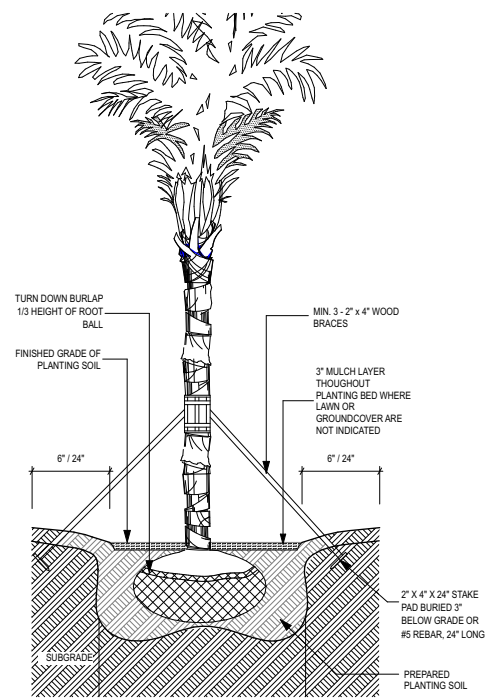


AG 3    Re 12    Lc 43    Pg 195    ML 7    RM 24    Am 13    Cf 38    Ap 54    Fl 26    Hc 50    Md 91

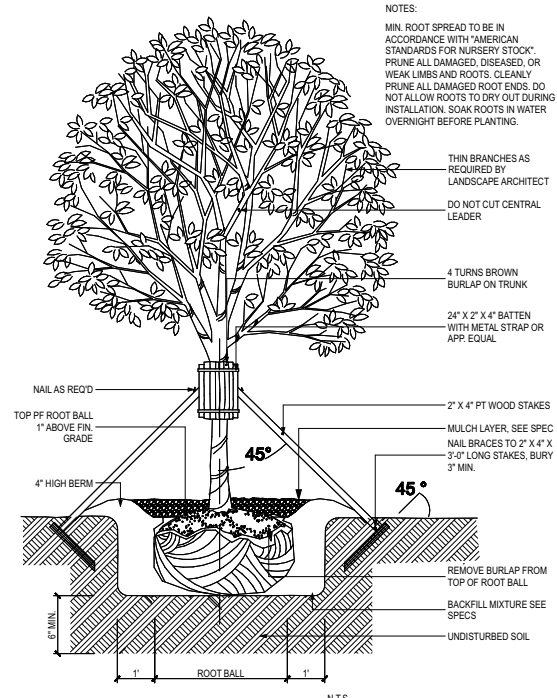
N



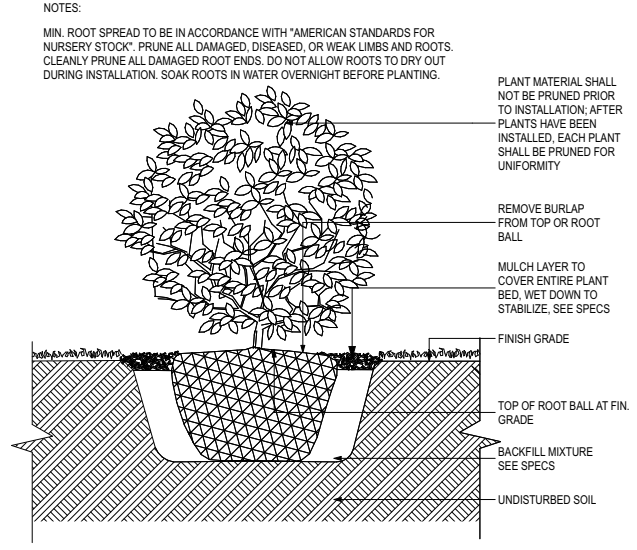
**2ND LEVEL  
PLANTING  
PLAN**



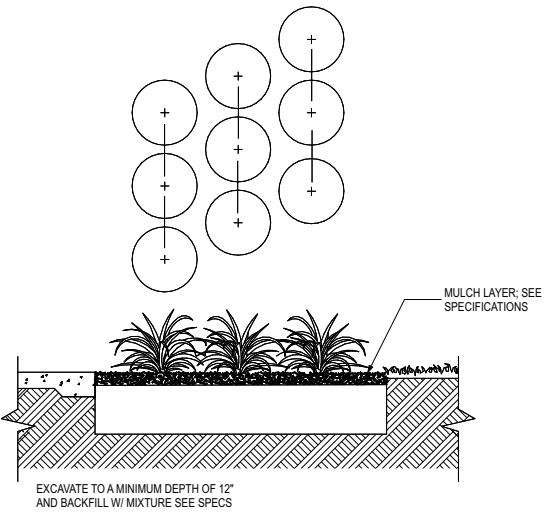
**3 PALM PLANTING DETAIL**  
L202 NOT TO SCALE



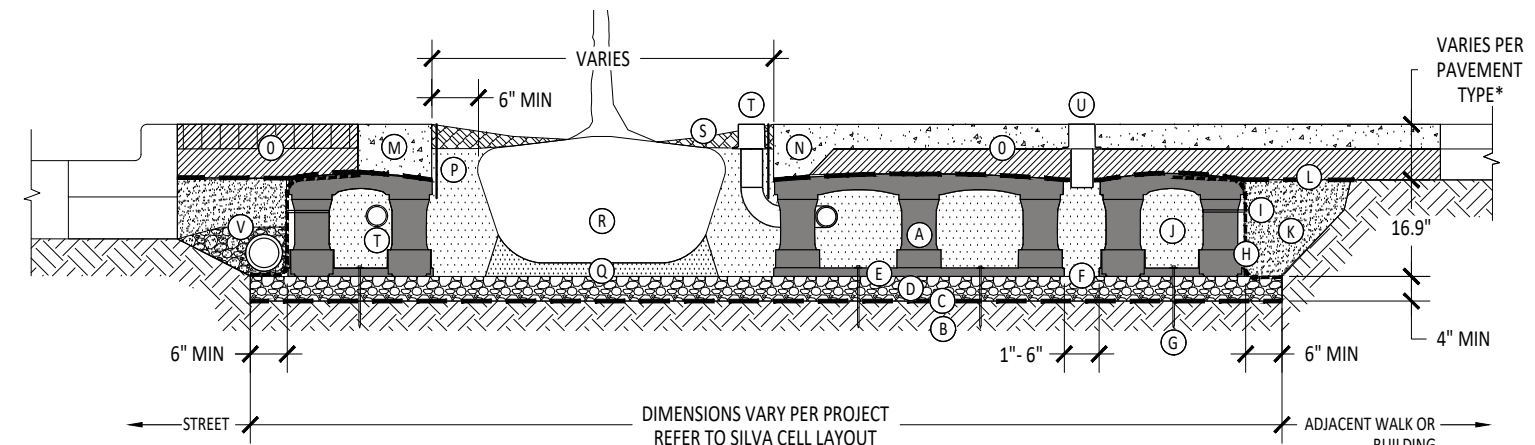
**2 LARGE TREE STAKE DETAIL**  
L202 NOT TO SCALE



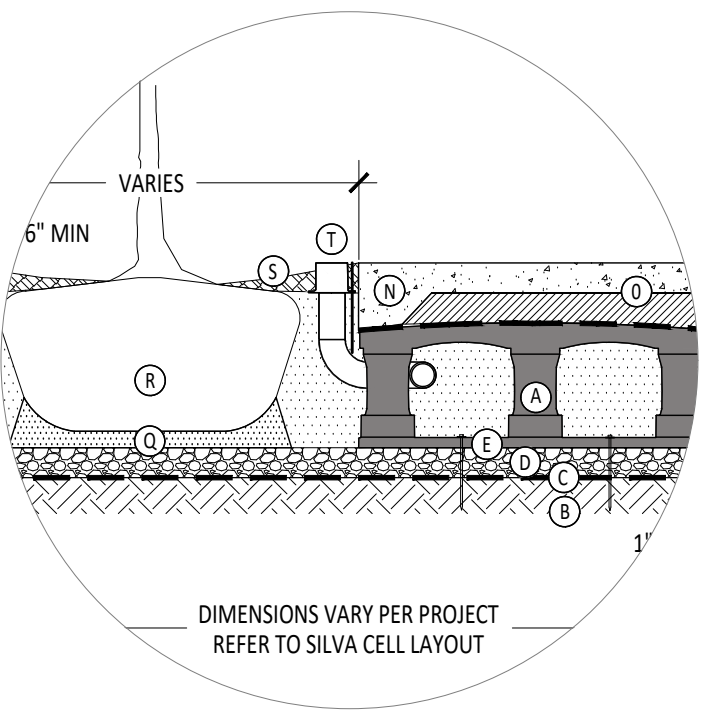
**4 SHRUB DETAIL**  
L202 NOT TO SCALE



**5 GROUNDCOVER SPACING DETAIL**  
L202 NOT TO SCALE



**1 TYPICAL SILVA CELL DETAIL**  
L202 NOT TO SCALE



**1A TYPICAL SILVA CELL DETAIL**  
L202 NOT TO SCALE

NOTES:  
MIN. ROOT SPREAD TO BE IN ACCORDANCE WITH "AMERICAN STANDARDS FOR NURSERY STOCK". PRUNE ALL DAMAGED, DISEASED, OR WEAK LIMBS AND ROOTS. CLEANLY PRUNE ALL DAMAGED ROOT ENDS. DO NOT ALLOW ROOTS TO DRY OUT DURING INSTALLATION. SOAK ROOTS IN WATER OVERNIGHT BEFORE PLANTING.

PLANT MATERIAL SHALL NOT BE PRUNED PRIOR TO INSTALLATION. AFTER PLANTS HAVE BEEN INSTALLED, EACH PLANT SHALL BE PRUNED FOR UNIFORMITY

REMOVE BURLAP FROM TOP OR ROOT BALL

MULCH LAYER TO COVER ENTIRE PLANT BED. WET DOWN TO STABILIZE. SEE SPECS

FINISH GRADE  
TOP OF ROOT BALL AT FIN. GRADE  
BACKFILL MIXTURE SEE SPECS  
UNDISTURBED SOIL

TURN DOWN BURLAP 1/3 HEIGHT OF ROOT BALL

FINISHED GRADE OF PLANTING SOIL

MIN. 3" - 2" x 4" WOOD BRACES  
3" MULCH LAYER THROUGHOUT PLANTING BED WHERE LAWN OR GROUND COVER ARE NOT INDICATED

6" / 24"  
6" / 24"

2" x 4" x 24" STAKE PAD BURED 7" BELOW GRADE OR #5 REBAR, 24" LONG

SUBGRADE  
PREPARED PLANTING SOIL

NOTES:  
MIN. ROOT SPREAD TO BE IN ACCORDANCE WITH "AMERICAN STANDARDS FOR NURSERY STOCK". PRUNE ALL DAMAGED, DISEASED, OR WEAK LIMBS AND ROOTS. CLEANLY PRUNE ALL DAMAGED ROOT ENDS. DO NOT ALLOW ROOTS TO DRY OUT DURING INSTALLATION. SOAK ROOTS IN WATER OVERNIGHT BEFORE PLANTING.

THIN BRANCHES AS REQUIRED BY LANDSCAPE ARCHITECT  
DO NOT CUT CENTRAL LEADER

4 TURNS BROWN BURLAP ON TRUNK

24" x 2" x 4" BATTEN WITH METAL STRAP OR APP. EQUAL

2" x 4" PT WOOD STAKES  
MULCH LAYER. SEE SPEC NAIL BRACES TO 2" x 4" x 24" LONG STAKES. BURY 3" MIN.

45°  
45°

REMOVE BURLAP FROM TOP OF ROOT BALL  
BACKFILL MIXTURE SEE SPECS  
UNDISTURBED SOIL

6" MIN.  
6" MIN.

1"  
ROOT BALL  
1"

NAILS REQ'D  
TOP OF ROOT BALL 1" ABOVE FIN. GRADE  
4" HIGH BERM

45°  
45°

N.T.S.

- KEY PLAN
- (A) SILVA CELL SYSTEM (DECK, BASE, AND POSTS)
  - (B) SUBGRADE, COMPACTED
  - (C) GEOTEXTILE FABRIC, PLACED ABOVE SUBGRADE
  - (D) 4" MIN AGGREGATE SUB BASE, COMPACTED TO 95% PROCTOR
  - (E) SILVA CELL BASE SLOPE, 10% MAX
  - (F) 1" TO 6" SPACING BETWEEN SILVA CELLS AT BASE
  - (G) ANCHORING SPIKES, CONTACT DEEPROOF FOR ALTERNATIVE
  - (H) GEOGRID, WRAPPED AROUND PERIMETER OF SYSTEM, WITH 6" TOE (OUTWARD FROM BASE) AND 12" EXCESS (OVER TOP OF DECK)
  - (I) CABLE TIE, ATTACHING GEOGRID TO SILVA CELL AT BASE OF UPPER LEG FLARE, AS NEEDED



- (J) PLANTING SOIL, PER PROJECT SPECIFICATIONS, PLACED IN LIFTS AND WALK-IN COMPACTED TO 75-85% PROCTOR
- (K) COMPACTED BACKFILL, PER PROJECT SPECIFICATIONS
- (L) GEOTEXTILE FABRIC TO EDGE OF EXCAVATION
- (M) RIBBON CURB AT TREE OPENING (TO BE USED WITH PAVERS OR ASPHALT)
- (N) THICKENED EDGE AT TREE OPENING (TO BE USED WITH CONCRETE)
- (O) PAVEMENT AND AGGREGATE BASE PER PROJECT \*

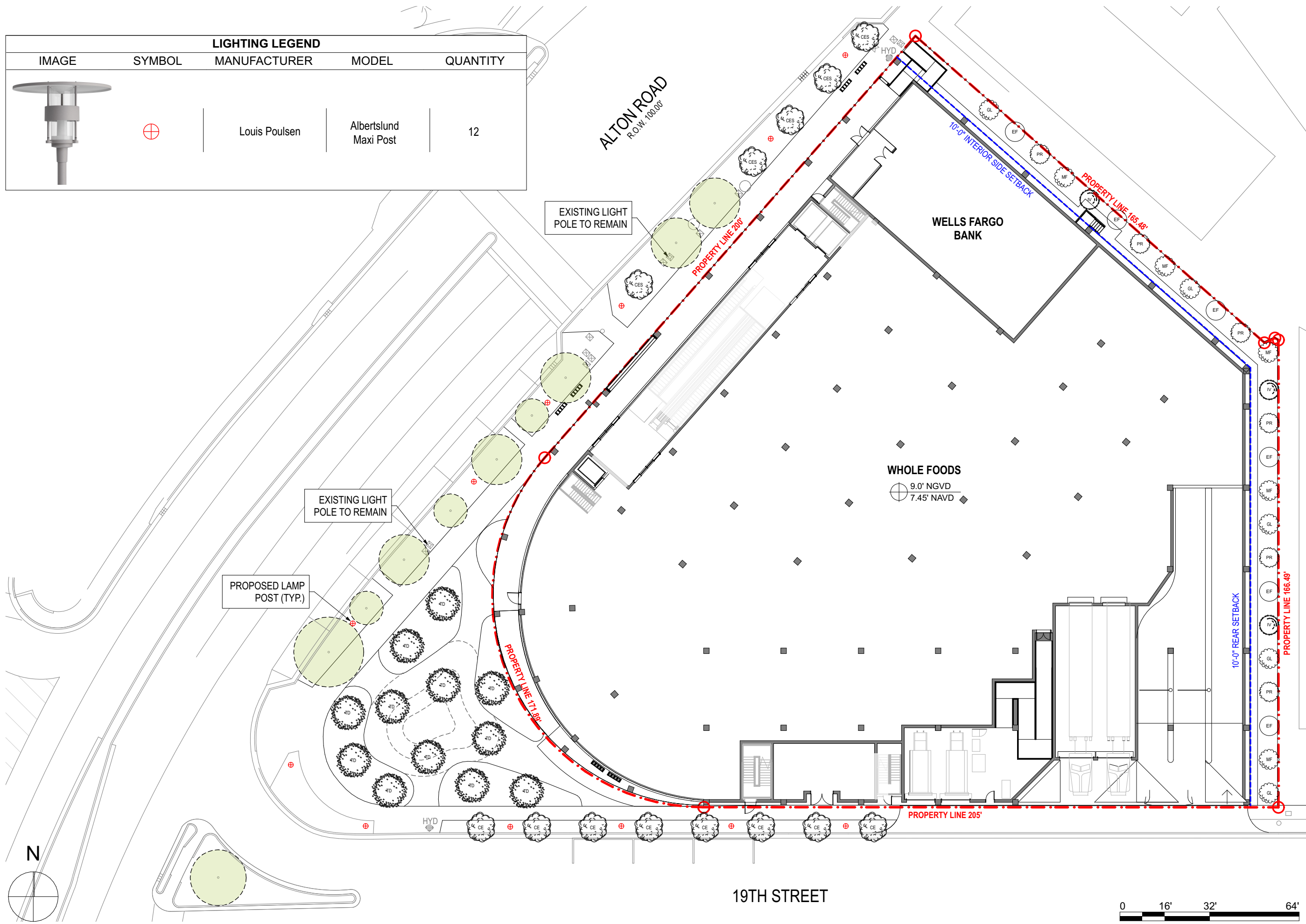
\*MINIMUM PAVEMENT PROFILE OPTIONS TO MEET H-20 LOADING

PAVEMENT	+ AGGREGATE BASE COURSE
4" CONCRETE	+ 4" AGGREGATE
3" PAVER	+ 12" AGGREGATE
4" ASPHALT	+ 12" AGGREGATE
2.6" PAVER	+ 5" CONCRETE

- (P) DEEPROOF ROOT BARRIER, 12" OR 18", DEPTH DETERMINED BY THICKNESS OF PAVEMENT SECTION, INSTALL DIRECTLY ADJACENT TO CONCRETE EDGE RESTRAINT
- (Q) PLANTING SOIL BELOW ROOT BALL, COMPACTED WELL TO PREVENT SETTLING
- (R) ROOT BALL
- (S) TREE OPENING TREATMENT, PER PROJECT SPECIFICATIONS
- (T) DEEPROOF WATER AND AIR VENT, ROOTBALL, WHEN REQUIRED
- (U) DEEPROOF WATER AND AIR VENT, WHEN REQUIRED
- (V) UNDERDRAIN SYSTEM, WHEN REQUIRED (LOCATION AND DETAILS BY OTHERS)

- NOTES
1. EXCAVATION SHALL BE DONE IN ACCORDANCE WITH ALL APPLICABLE HEALTH AND SAFETY REGULATIONS
  2. INSTALLATION TO BE COMPLETED IN ACCORDANCE WITH MANUFACTURER'S SPECIFICATIONS
  3. PROVIDE SUPPLEMENTAL IRRIGATION
  4. DO NOT SCALE DRAWINGS

LIGHTING LEGEND				
IMAGE	SYMBOL	MANUFACTURER	MODEL	QUANTITY
		Louis Poulsen	Albertslund Maxi Post	12



**WHOLE FOODS**  
9.0' NGVD  
7.45' NAVD