

PROPOSED PLANT LIST					
SYM	BOTANICAL NAME	COMMON NAME	SPEC	NATIVE / DROUGHT	QTY
PROPERTY TREES + PALMS					
	<i>Bursera simaruba</i>	Gumbo Limbo Tree	24'-26" H 18" W 12-16" DBH	* *	1
	<i>Phoenix canariensis x sylvestris</i>	Sylvester Date Palm	20' WD HT.	*	7
	<i>Phoenix canariensis</i>	Canary Date Palm	18-20' Wood CT 28" CAL	*	1
	<i>Eucalyptus deglupta</i>	Rainbow Eucalyptus Tree	Specimen 28' H 16-18" W 16-18" DBH	*	1
	<i>Calophyllum brasiliensis</i>	Brazilian Beauty leaf Tree	14-16' OA	*	2
	<i>Phycosperma carvifolides</i>	Fishtail Palm	22-24' OA	*	5
	<i>Coccothrinax</i>	Coconut Palm	20-24' CTFG	*	7
	<i>Dypsis cabadae</i>	Cabada Palm	16-18' CT DBL	*	3
	<i>Pandanus</i>	Screwpine Tree	14-16' OA	*	1
	<i>Thrinax</i>	Thatch Palm	16-18' CT	*	1
	<i>Curcuma roscoeana</i>	Orange Geiger (Street Tree)	10-12' HT 2"-3" DBH	*	4
	<i>Roystonia regia</i>	Royal Palm	18' GW 33-35' OA	*	6
	<i>Ravenala madagascariensis</i>	Travelers Palm type 1	16-18' OA	*	3
	<i>Ravenala madagascariensis</i>	Travelers Palm type 2	12-14' OA	*	1
	<i>Clusia rosea</i>	Autograph tree	14-16' 4"-6" DBH	*	7
SHRUBS + AGENTS					
HE	<i>Heliconia rostrata</i>	Red Lobster Claw	25G	*	7
SR	<i>Serenoa repens</i>	Silver Saw Palmetto	45G	*	2
ZF	<i>Zamia furfuracea</i>	Cardboard	25G	*	3
AO	<i>Alcantarea odorata</i>	Silver Odorata Bromeliad	25G	*	3
C	<i>Clusia guttifer</i>	Clusia	45G	*	19
LG	<i>Licuala grandis</i>	Licuala	45G	*	3
DS	<i>Dioon edule</i>	Giant Dinosaur	45G	*	3
MF	<i>Myrcianthes fragrans</i>	Simpson's Stopper	25 G 6'-7' HT	*	10
PL	<i>Psychotria ligustrifolia</i>	Bahama Coffee	15G	*	44
AI	<i>Alcantarea imperialis</i>	Imperial Bromeliad	20" x 20"	*	3
CG	<i>Gymnanthes lucida</i>	Crabwood	25 G 6'-7' HT	*	74
RE	<i>Rhapis excelsa</i>	Lady Palm	25G - 6' HT	*	14
GROUNDCOVERS					
NS	<i>Neomarica spp</i>	Apostle Iris	1 GAL @ 18" OC	*	1073
WF	<i>Microsorium scolopendria</i>	Wart Fern	1 GAL @ 18" OC	*	1073
PG	<i>Phloxendylon octagonum</i>	Phloxendylon	3 GAL @ 18" OC	*	112
RF	<i>Sulphurea fulvescens</i>	Orange Sulphure	1 GAL @ 12" OC	*	144
BX	<i>Phloxendylon Surinense</i>	Burns Man	3 GAL @ 18" OC	*	54
RS	<i>Hibiscus acetosella</i>	Regal Shield	1 GAL @ 18" OC	*	73
LI	<i>Liriope muscari</i>	Lil turf	1 GAL @ 18" OC	*	154
MD	<i>Monstera deliciosa</i>	Swiss Cheese Plant	3 GAL @ 36" OC	*	39
MG	<i>Ophiopogon japonicus</i>	Mondo Grass	3 GAL @ 18" OC	*	74
FK	<i>Pennisetum fakahalchee</i>	Fakahalchee	3 GAL @ 36" OC	*	41
Top Soil					3112 SQ FT
SOD Empire Zoysia					576 CBY

CITY OF MIAMI BEACH LANDSCAPE LEGEND
 Zoning District: RS-2 Lot Area: 10,000 Sqft Acres: 0.221

TREES

A. Number of trees required per lot or net lot acre, less existing number of trees meeting minimum requirements=
 9 trees x 0.221 net lot acres - number of existing trees (0) = 9*0.221

B. % Natives required: Number of trees provided x 30% = 11*.3

C. % Low maintenance / drought and salt tolerant required:
 Number of trees provided x 50% = 11*.5

D. Street Trees (maximum average spacing of 20' o.c.)
 68 linear feet along street divided by 20' = 68/20

E. Street tree species allowed directly beneath power lines:
 (maximum average spacing of 20' o.c.): 68 linear feet along street divided by 20' = 68/20

SHRUBS

A. Number of shrubs required: Sum of lot and street trees required x 12 = 15*12

B. % Native shrubs required: Number of shrubs provided x 50% = 185*.5

LARGE SHRUBS OR SMALL TREES

A. Number of large shrubs or small trees required:
 Number of required shrubs x 10% = 180*.1

B. % Native large shrubs or small trees required:
 Number of large shrubs or small trees provided x 50% = 84*.5

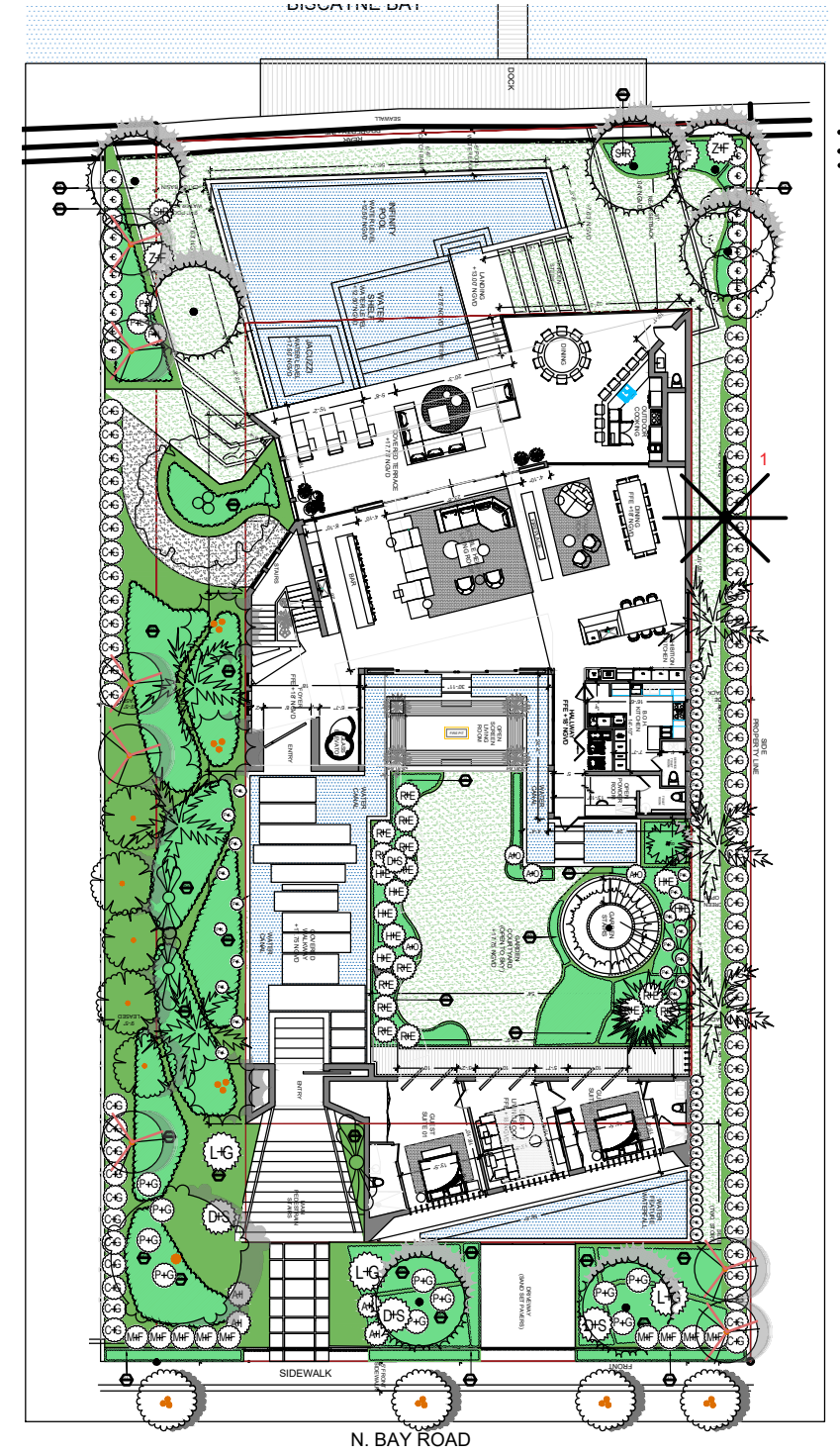
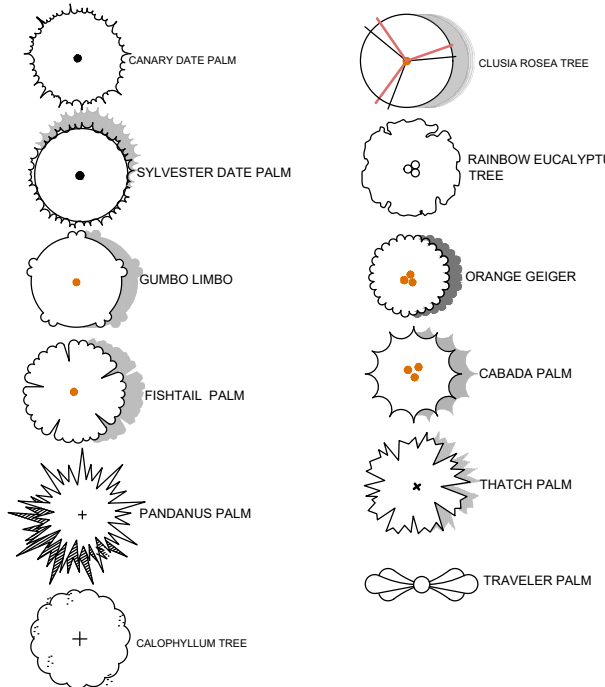
Required/ Provided Allowed

9	11
3	7
6	11
4	4
4	4
180	185
93	130
18	84
42	84

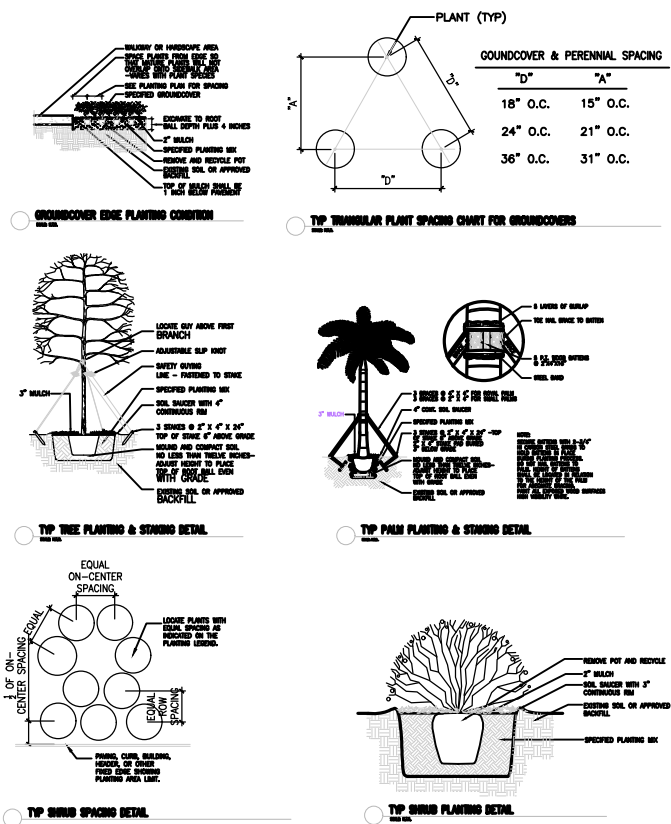
GENERAL PLANTING NOTES:

- EXISTING TREES DESIGNATED TO REMAIN SHALL BE PROTECTED DURING ALL CONSTRUCTION PHASES. ANY TREES OR SHRUBS SCARPED OR DESTROYED DESIGNATED TO REMAIN WILL BE REPLACED AT THE CONTRACTOR'S EXPENSE, WITH SIMILAR SPECIES, SIZE AND QUALITY.
- LANDSCAPE CONTRACTOR SHALL CONTACT THE CITY AND/OR UTILITY COMPANIES TO LOCATE ALL UNDERGROUND UTILITIES OR STRUCTURES PRIOR TO DIGGING. LANDSCAPE CONTRACTOR SHALL REPAIR ALL DAMAGE TO UNDERGROUND UTILITIES, AND/OR CONSTRUCTION CAUSED BY UTILITY DAMAGE, AT NO COST TO THE OWNER.
- ALL PLANT MATERIALS SHALL BE GUARANTEED FOR A PERIOD OF 12 MONTHS AFTER DATE OF SUBSTANTIAL COMPLETION.
- LANDSCAPE CONTRACTOR SHALL VERIFY ALL ESTIMATED QUANTITIES OF MATERIAL SHOWN ON THE DRAWINGS PRIOR TO SUBMITTING HIS BID. PLANTING PLAN TO TAKE PRECEDENCE OVER PLANT LIST.
- ALL AREAS DISTURBED DURING CONSTRUCTION SHALL BE SOD UNLESS OTHERWISE NOTED.
- EXISTING PLANT MATERIAL NOT SHOWN ON THE PLAN AND IN CONFLICT WITH NEW PLANTING SHALL BE EVALUATED AT THE TIME OF NEW PLANTING INSTALLATION BY THE LANDSCAPE ARCHITECT.
- ALL BUILDING CONSTRUCTION MATERIAL AND FOREIGN MATERIAL SHALL BE REMOVED FROM PLANTING AREAS AND REPLACED WITH 80/20 MIX FILL SOIL, OR AS PER SPECIFICATIONS.
- ALL PLANT MATERIAL SYMBOLS SHOWN ON LANDSCAPE PLAN SHALL BE CONSIDERED DIAGRAMMATIC AND SHOULD BE ADJUSTED IN THE FIELD BY CONTRACTOR TO AVOID ALL UTILITIES, AND ALL OTHER OBSTRUCTIONS.
- ALL SIZES SHOWN FOR PLANT MATERIAL ON THE PLAN ARE TO BE CONSIDERED MINIMUM. ALL PLANT MATERIAL MUST MEET OR EXCEED THESE MINIMUM REQUIREMENTS FOR BOTH HEIGHT AND SPREAD. ANY OTHER REQUIREMENTS FOR SPECIFIC SHAPE OR EFFECT AS NOTED ON THE PLAN SHALL ALSO BE REQUIRED FOR ACCEPTANCE. ALL TREES TO BE SINGLE TRUNKED, UNLESS OTHERWISE NOTED ON THE PLANS.
- ALL TREES TO BE RELOCATED SHALL BE ROOT PRUNED 60 DAYS PRIOR TO THEIR RELOCATION
- TREES TO BE TRANSPLANTED ARE TO BE FLOODED FOR FIVE DAYS PRIOR TO RELOCATION
- SITE PREPARATION SHALL INCLUDE THE ERADICATION AND REMOVAL OF ANY WEEDS, GRASS, CLEAN-UP OF ANY DEAD MATERIAL AND FINISH GRADING AS PER THE SPECS.
- THE LANDSCAPE CONTRACTOR SHALL AT ALL TIMES KEEP THE JOB SITE CLEAN AND FREE FROM ACCUMULATION OF WASTE MATERIAL, DEBRIS, AND RUBBISH.
- THE LANDSCAPE CONTRACTOR SHALL EXERCISE CAUTION TO PROTECT ALL EXISTING SOD AND IRRIGATION. ANY DAMAGE TO THE SOD OR IRRIGATION SHALL BE REPLACED OR REPAIRED TO THE ORIGINAL STATE BY THE LANDSCAPE CONTRACTOR AT NO ADDITIONAL COST TO THE OWNER.
- ALL PITS TO BE FILLED THE SAME DAY OF REMOVAL OF TREES. RESTORE SURFACE WITH SOD OR MULCH TO MATCH EXISTING CONDITIONS
- ALL PLANT MATERIAL TO BE FLORIDA #1 OR BETTER, AS DEFINED BY THE FLORIDA DEPARTMENT OF AGRICULTURE'S CODES AND STANDARDS FOR NURSERY PLANTS PART I AND II.
- MULCH ALL PLANTING AREAS WITH SHREDDED ORGANIC MULCH TO A MINIMUM DEPTH OF 3".
- ALL PLANTING AREAS WITHIN LIMIT OF WORK SHALL RECEIVE 100% IRRIGATION COVERAGE.
- TREES WILL BE PLANTED IN A MANNER COMPLIANT WITH ENERGY CONSERVATION ZONE REQUIREMENTS.
- MINIMUM GRADE AND STANDARDS. PLANTS INSTALLED PURSUANT TO THIS CODE SHALL CONFORM TO, OR EXCEED, THE MINIMUM STANDARDS FOR FLORIDA NUMBER ONE AS PROVIDED IN THE MOST CURRENT EDITION OF "GRADES AND STANDARDS FOR NURSERY PLANTS, PART I AND II," PREPARED BY THE STATE DEPARTMENT OF AGRICULTURE AND CONSUMER SERVICES. PROHIBITED OR CONTROLLED TREES SHALL NOT BE COUNTED TOWARD FULFILLING THE MINIMUM TREE REQUIREMENTS
- MULCH ALL BEDS UNLESS OTHERWISE NOTED ON PLAN
- LANDSCAPE ARCHITECT TO APPROVE LAYOUT OF ALL MATERIALS.
- PHOTOS OF MATERIALS TO BE PROVIDED FOR APPROVAL.

PROPOSED PLANTING SYMBOLS



GROUND LEVEL LANDSCAPE PLAN
 Scale: 1/32"=1'-0"



3100 NORTH BAY ROAD, MIAMI BACH, FLORIDA
DECEMBER 10, 2023



L-200